



June 27, 2025

District Supervisor
Oil Conservation Division, District 1
1625 North French Drive
Hobbs, New Mexico 88240

**Re: Remediation Report and Closure Request
Maverick Permian LLC
MCA Unit #138
Unit Letter G, Section 29, Township 17 South, Range 32 East
Lea County, New Mexico
NMOCD Incident ID# nAPP2427157652**

Dear Sir or Madam,

Tetra Tech, Inc. (Tetra Tech) was contracted by Maverick Permian LLC (Maverick) to assist with the management of a historic release of oil associated with the MCA Unit #138 flowline release, Unit Letter G, Section 29, Township 17 South, Range 32 East, in Lea County, New Mexico, at coordinates 32.807131°, -103.719408°. The location is shown in **Figure 1**.

BACKGROUND

On September 26, 2024, Maverick operations identified a release of approximately 3 bbls of oil and 15 bbls of produced water onto pastureland due to flowline corrosion. Tetra Tech reported the release on behalf of Maverick to the New Mexico Oil Conservation Division (NMOCD) on September 27, 2024, and the NMOCD assigned Incident Number nAPP2427157652.

SITE CHARACTERIZATION

Receptors

Tetra Tech performed a site characterization for the release location. It did not identify any watercourses, sinkholes, playas, residences, schools, hospitals, institutions, churches, springs, private domestic water wells, wetlands, incorporated municipal boundaries, subsurface mines, or floodplains within the distances specified in 19.15.29.11 New Mexico Administrative Code (NMAC). Based on a review of the NMOCD Mapper, the site is in an area of low karst potential. The site characterization data is included in **Attachment 1**.

Depth to Groundwater

A search of the New Mexico Office of the State Engineer (NMOSE) and United States Geologic Survey (USGS) groundwater databases was completed to determine the proximity of known water sources within a half-mile radius of the Site. The nearest water well is USGS well 324829103420201, located approximately 0.90 miles east-northeast of the Site with a listed depth to water of 69.49 feet below ground surface, dated February 14, 1966.

Wetlands

Readily available data were reviewed to determine the status of the Site regarding wetland designation or the potential wetlands existence. The U.S. Fish and Wildlife Service (USFWS) National Wetlands Inventory (NWI) Wetlands Interactive Mapper. Based on the NWI, the Site is not identified as having a mapped wetland within 300 feet of the Site.

Tetra Tech, Inc.

1500 CityWest Boulevard, Suite 1000, Houston, Texas 77042

Tel +1.832.251.5160 | tetrattech.com/oga | tetrattech.com

Remediation Report and Closure Request
MCA Unit #138
Incident ID# nAPP2427157652

Maverick Permian LLC
June 27 2025

Soils

According to the United States Department of Agriculture (USDA) Natural Resources Conservation Service (NRCS), the Site is mapped as having Pyote soils and Dune land, 0 to 3 percent slopes, which is classified as a sand soil type.

REGULATORY FRAMEWORK

Based upon the release footprint location and in accordance with Subsection E of 19.15.29.12 NMAC, per 19.15.29.11 NMAC, the site characterization data was used to determine recommended remedial action levels for Benzene, Toluene, Ethylbenzene, and Xylene (BTEX), Total Petroleum Hydrocarbons (TPH) in soil.

In accordance with the NMOCD guidance *Procedures for Implementation of the Spill Rule* (19.15.29 NMAC), the following Reclamation Requirements for surface soils (0-4 feet bgs) outside of active oil and gas operations are the applicable remediation and reclamation standards:

Reclamation Requirements

| Constituent | Remediation RRAL |
|-------------------|------------------|
| Chloride | 600 mg/kg |
| TPH (GRO+DRO+ORO) | 100 mg/kg |
| BTEX | 50 mg/kg |
| Benzene | 10 mg/kg |

REMEDICATION AND CONFIRMATION SAMPLING

Excavation activities commenced on April 16, 2025, and concluded on April 21, 2025. Maverick's subcontractor, McNabb Partners (McNabb), used heavy equipment to excavate impacted soil from the remediation area to a maximum depth of four (4) feet bgs as shown in **Figure 3**. Within the remediation area, to avoid potential contact by heavy equipment with pressurized lines, heavy equipment was maintained at least 2 feet away from pressurized lines where hydro-excavation and hand-digging were employed.

McNabb excavated 346 cubic yards of contaminated soil from a 1,975-square-foot area and transported it to R360 Halfway Disposal and Landfill for off-site disposal. Photographs of the final excavation are provided in **Attachment 2**.

Confirmation Sampling Notification

On April 16, 2025, Tetra Tech notified the NMOCD of confirmation sampling through the submission of a C-141N Sampling Notification in the NMOCD Permitting portal for confirmation sampling performed on April 21, 2025. Sampling notification was conducted in accordance with 19.15.29.12(D)(1)(a) NMAC and the Energy, Minerals and Natural Resources Department (EMNRD) *Notice Process Updates re: Submissions of Form C-141 Release Notification and Corrective Actions* dated December 1, 2023.

Remediation Report and Closure Request
MCA Unit #138
Incident ID# nAPP2427157652

Maverick Permian LLC
June 27 2025

Confirmation Sampling

Upon reaching the excavation's final lateral and vertical excavation extents, Tetra Tech collected 17 final confirmation samples, including ten (10) five-point composite floor samples and seven (7) five-point composite side wall samples from the excavated areas. The remediation excavation concluded as shown in **Figure 3** with a total area of 1,975 square feet and a sampling density of approximately one confirmation sample per 198 square feet.

Samples were submitted to Cardinal Laboratory in Hobbs, New Mexico, to analyze BTEX by Method 8021B, TPH by Method 8015M, and chloride by Method SM4500Cl-B. Laboratory analytical results for final confirmation samples reported concentrations of BTEX, TPH, and chloride as less than the respective Reclamation Requirements, demonstrating clean margins. Confirmation sample laboratory analytical results screened against Reclamation Requirements are summarized in **Table 3**, and laboratory analytical data packages, including chain of custody documentation, remediation confirmation sampling, are included in **Attachment 3**. Confirmation sampling locations and excavation extents are shown in **Figure 3**.

Excavation Backfill

On May 1, 2025, subsequent to the receipt of confirmation sample results, McNabb completed the backfilling of the excavated areas with 350 cubic yards of clean topsoil sourced from the nearby Seth Boyde Pit. On June 20, 2025, Tetra Tech returned to the Site and collected a composite sample of backfill material from the backfilled excavation. **Table 2** presents backfill validation sample data screened against Reclamation Requirements, and **Attachment 2** provides photographic documentation showing the excavated areas and final grading after backfilling.

Reclamation and Revegetation

To restore the impacted surface areas to the condition that existed prior to the release, the excavated areas have been backfilled with clean topsoil, and disturbed areas of impacted pastureland have been graded back to match the surrounding topography and the pre-existing condition to provide erosion control, long-term stability, prevent ponding of water, and preserve surface water flow patterns.

Subsequent to restoring topography and contouring, the disturbed areas of the Site shown in **Figure 3** were seeded with New Mexico State Land Office (NMSLO) Sandy (S) Sites Seed Mixture in accordance with the Site soil profile detailed above in the Site Characterization Section, to aid in vegetation growth to complete reclamation. Seeding was conducted via broadcast at the application rates specified for broadcast application in pounds pure live seed per acre according to the NMSLO Seed Mix Sandy (S) data sheet provided in **Attachment 4**. Seed was harrowed into the prepared soil bed with a rake attached to a backhoe.

Remediation Report and Closure Request
MCA Unit #138
Incident ID# nAPP2427157652

Maverick Permian LLC
June 27 2025

CONCLUSION

Based on the confirmation sampling results, the impacted soil within the release footprint with concentrations greater than Reclamation Requirements has been removed and properly disposed of offsite, the excavated area has been backfilled with clean topsoil, and the pasture has been reclaimed; therefore, Site remediation and reclamation is complete. Revegetation will be monitored, and a Revegetation Report will be prepared and submitted to the NMOCD once revegetation requirements have been achieved at the Site. If you have any questions concerning the remediation activities for the Site, please contact Chuck Terhune by phone at (281) 252-2093 or by email at chuck.terhune@tetrattech.com.

Sincerely,



Sam Raiford
Geologist
Tetra Tech, Inc.



Charles Terhune IV, P.G.
Program Manager
Tetra Tech, Inc.

cc: Mr. Bryce Wagoner, Maverick Permian LLC
Bureau of Land Management

Remediation Report and Closure Request
MCA Unit #138
Incident ID# nAPP2427157652

Maverick Permian LLC
June 27 2025

LIST OF ATTACHMENTS

Figures

- Figure 1 – Site Location and Topographic Map
- Figure 2 – Approximate Release Extent and Site Assessment Map
- Figure 3 – Remediation Extents and Confirmation Sampling Map

Tables

- Table 1 – Summary of Analytical Results – Remediation Confirmation Sampling
- Table 2 – Summary of Analytical Results – Backfill Validation Sampling

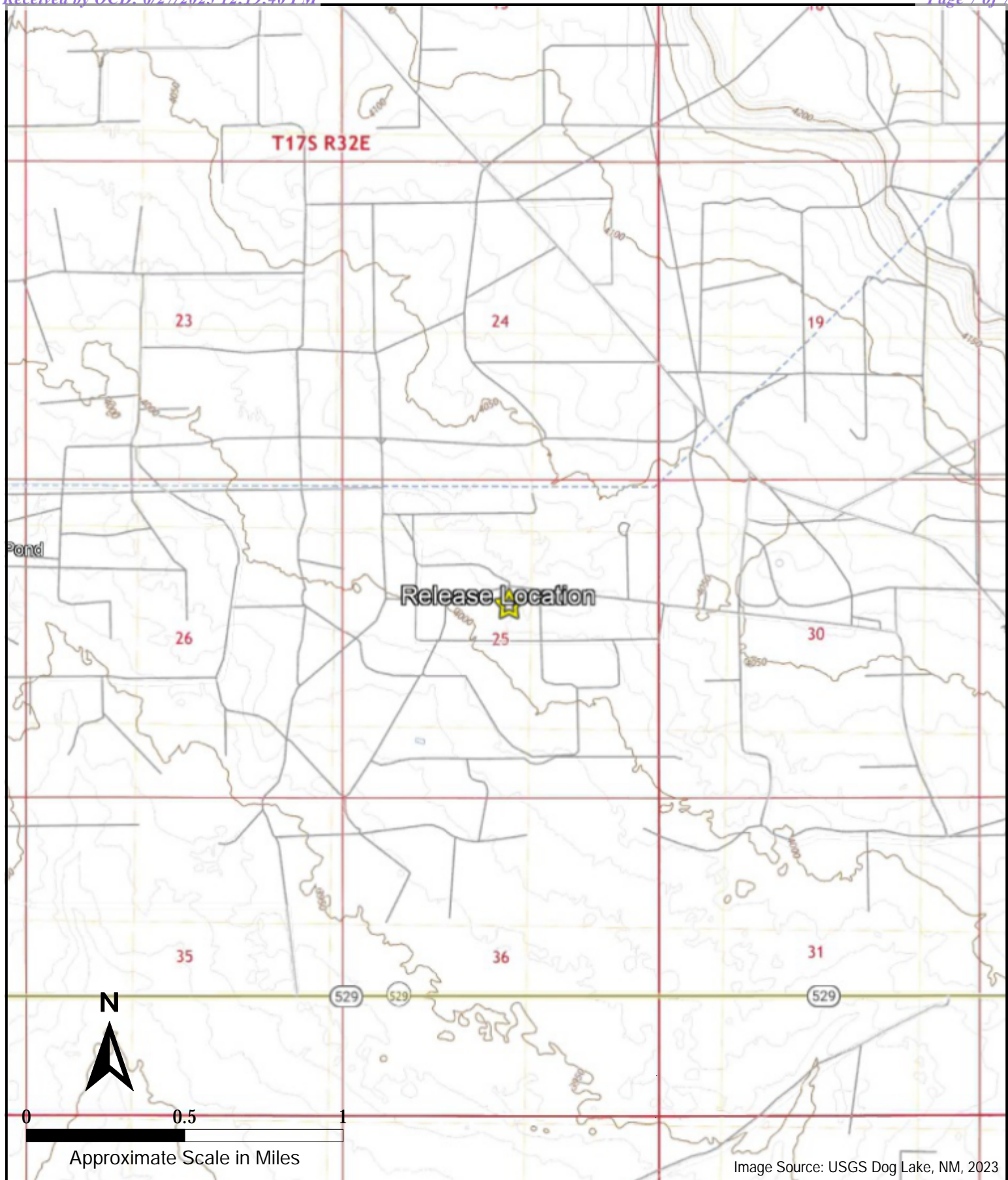
Attachments

- Attachment 1 – Site Characterization Data
- Attachment 2 – Photographic Log
- Attachment 3 – Laboratory Data
- Attachment 4 – Seed Mixture

Remediation Report and Closure Request
MCA Unit #138
Incident ID# nAPP2427157652

Maverick Permian LLC
June 27 2025

FIGURES

**TETRA TECH**

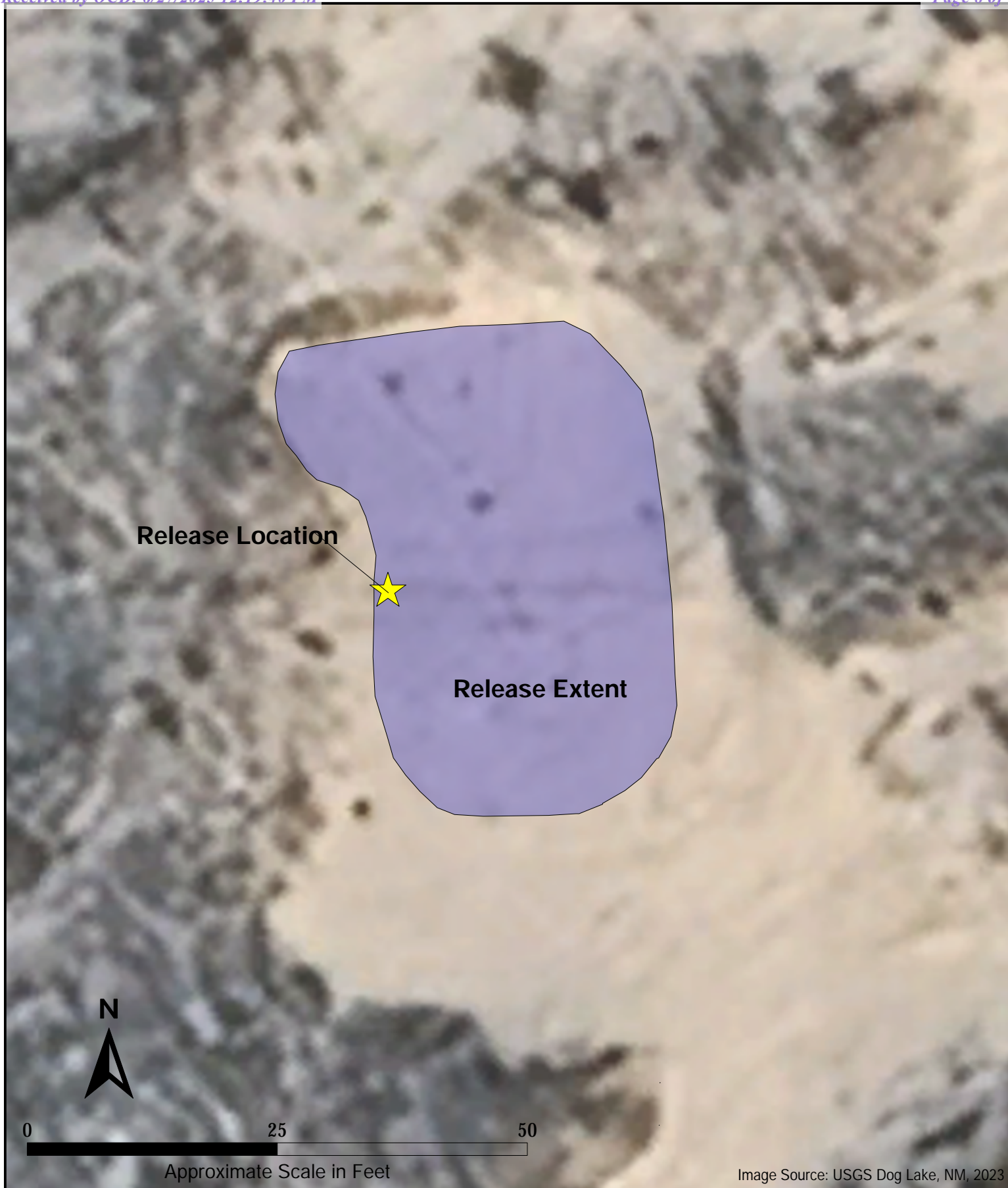
1500 CityWest Boulevard
Suite 1000
Houston, Texas 77042

MAVERICK PERMIAN, LLC
INCIDENT ID: NAPP2427157652
(32.807131°, -103.719408°)
Lea County, New Mexico

MCA UNIT #138 RELEASE
SITE LOCATION AND TOPOGRAPHIC MAP

PROJECT NO: 212C-MD-03836
DATE: June 11, 2025
DESIGNED BY: CHT

Figure
1

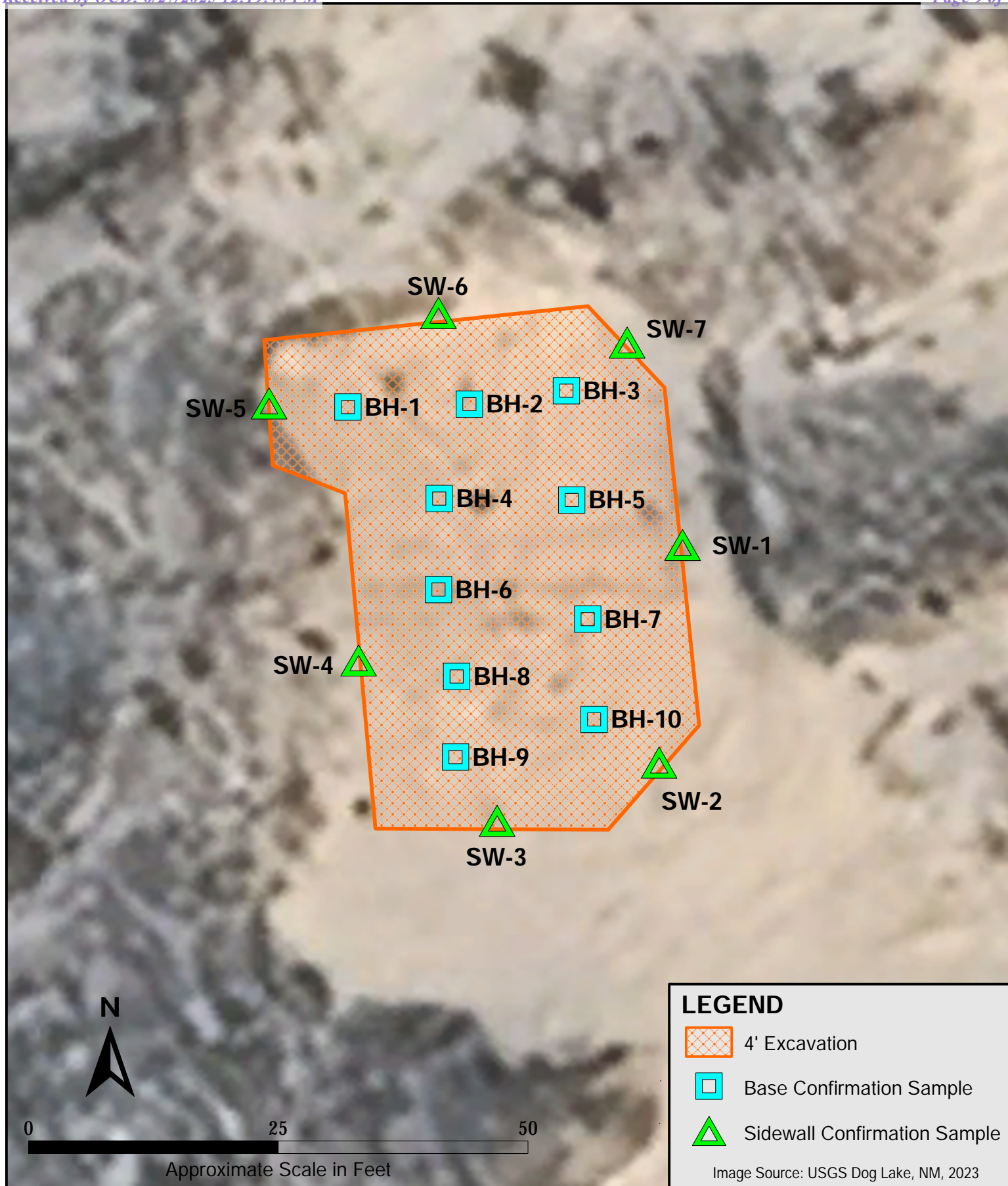
**TETRA TECH**

1500 CityWest Boulevard
Suite 1000
Houston, Texas 77042

MAVERICK PERMIAN, LLC
INCIDENT ID: NAPP2427157652
(32.807131°, -103.719408°)
Lea County, New Mexico
MCA UNIT #138 RELEASE
RELEASE EXTENT MAP

PROJECT NO: 212C-MD-03836
DATE: JUNE 11, 2025
DESIGNED BY: CHT

Figure
2

**TETRA TECH**

1500 CityWest Boulevard
Suite 1000
Houston, Texas 77042

MAVERICK PERMIAN, LLC
INCIDENT ID: NAPP2427157652
(32.807131°, -103.719408°)
Lea County, New Mexico
MCA UNIT #138 RELEASE
RECLAMATION EXTENTS MAP

PROJECT NO: 212C-MD-03836
DATE: JUNE 11, 2025
DESIGNED BY: CHT

Figure
3

Remediation Report and Closure Request
MCA Unit #138
Incident ID# nAPP2427157652

Maverick Permian LLC
June 27 2025

TABLES



TABLE 1
SUMMARY OF ANALYTICAL RESULTS
CONFIRMATION SAMPLING - INCIDENT nAPP2427157652
MAVERICK PERMIAN, LLC
MCA UNIT #138 RELEASE
LEA COUNTY, NEW MEXICO

| Sample ID | Sample Date | Sample Depth | Chloride ¹ | | BTX ² | | | | | | | | | | TPH ³ | | | | |
|---|-------------|--------------|-----------------------|---|------------------|---|---------|---|--------------|---|---------------|---|-----------|---|----------------------------------|-------------------------------------|-------------------------------------|---------|-------------------|
| | | | | | Benzene | | Toluene | | Ethylbenzene | | Total Xylenes | | Total BTX | | GRO | DRO | EXT DRO | TPH | Total TPH |
| | | | | | mg/kg | Q | mg/kg | Q | mg/kg | Q | mg/kg | Q | mg/kg | Q | C ₆ - C ₁₀ | > C ₁₀ - C ₂₈ | > C ₂₈ - C ₃₆ | GRO+DRO | (GRO+DRO+EXT DRO) |
| | | feet bgs | mg/kg | Q | mg/kg | Q | mg/kg | Q | mg/kg | Q | mg/kg | Q | mg/kg | Q | mg/kg | Q | mg/kg | Q | mg/kg |
| RRALs (Table I 19.15.29.12 NMAC) | | | 600 | | 10 | | | | | | | | 50 | | | | | | 100 |
| BH -1 (4.0') | 4/21/2025 | 4.0 - 4.5 | <16.0 | | <0.050 | | <0.050 | | <0.050 | | <0.150 | | <0.300 | | <10.0 | | <10.0 | | <10.0 |
| BH -2 (4.0') | 4/21/2025 | 4.0 - 4.5 | 16 | | <0.050 | | <0.050 | | <0.050 | | <0.150 | | <0.300 | | <10.0 | | <10.0 | | <10.0 |
| BH -3 (4.0') | 4/21/2025 | 4.0 - 4.5 | 32 | | <0.050 | | <0.050 | | <0.050 | | <0.150 | | <0.300 | | <10.0 | | <10.0 | | <10.0 |
| BH -4 (4.0') | 4/21/2025 | 4.0 - 4.5 | 16 | | <0.050 | | <0.050 | | <0.050 | | <0.150 | | <0.300 | | <10.0 | | <10.0 | | <10.0 |
| BH -5 (4.0') | 4/21/2025 | 4.0 - 4.5 | 32 | | <0.050 | | <0.050 | | <0.050 | | <0.150 | | <0.300 | | <10.0 | | <10.0 | | <10.0 |
| BH -6 (4.0') | 4/21/2025 | 4.0 - 4.5 | 32 | | <0.050 | | <0.050 | | <0.050 | | <0.150 | | <0.300 | | <10.0 | | <10.0 | | <10.0 |
| BH -7 (4.0') | 4/21/2025 | 4.0 - 4.5 | 16 | | <0.050 | | <0.050 | | <0.050 | | <0.150 | | <0.300 | | <10.0 | | <10.0 | | <10.0 |
| BH -8 (4.0') | 4/21/2025 | 4.0 - 4.5 | <16.0 | | <0.050 | | <0.050 | | <0.050 | | <0.150 | | <0.300 | | <10.0 | | <10.0 | | <10.0 |
| BH -9 (4.0') | 4/21/2025 | 4.0 - 4.5 | <16.0 | | <0.050 | | <0.050 | | <0.050 | | <0.150 | | <0.300 | | <10.0 | | <10.0 | | <10.0 |
| BH -10 (4.0') | 4/21/2025 | 4.0 - 4.5 | <16.0 | | <0.050 | | <0.050 | | <0.050 | | <0.150 | | <0.300 | | <10.0 | | <10.0 | | <10.0 |
| SW -1 | 4/21/2025 | 0.0 - 4.0 | <16.0 | | <0.050 | | <0.050 | | <0.050 | | <0.150 | | <0.300 | | <10.0 | | <10.0 | | <10.0 |
| SW -2 | 4/21/2025 | 0.0 - 4.0 | 32 | | <0.050 | | <0.050 | | <0.050 | | <0.150 | | <0.300 | | <10.0 | | <10.0 | | <10.0 |
| SW -3 | 4/21/2025 | 0.0 - 4.0 | <16.0 | | <0.050 | | <0.050 | | <0.050 | | <0.150 | | <0.300 | | <10.0 | | <10.0 | | <10.0 |
| SW -4 | 4/21/2025 | 0.0 - 4.0 | 16 | | <0.050 | | <0.050 | | <0.050 | | <0.150 | | <0.300 | | <10.0 | | <10.0 | | <10.0 |
| SW -5 | 4/21/2025 | 0.0 - 4.0 | <16.0 | | <0.050 | | <0.050 | | <0.050 | | <0.150 | | <0.300 | | <10.0 | | <10.0 | | <10.0 |
| SW -6 | 4/21/2025 | 0.0 - 4.0 | <16.0 | | <0.050 | | <0.050 | | <0.050 | | <0.150 | | <0.300 | | <10.0 | | <10.0 | | <10.0 |
| SW -7 | 4/21/2025 | 0.0 - 4.0 | 32 | | <0.050 | | <0.050 | | <0.050 | | <0.150 | | <0.300 | | <10.0 | | <10.0 | | <10.0 |

NOTES:

bgs: Below ground surface
mg/kg: Milligrams per kilogram
TPH: Total Petroleum Hydrocarbons

GRO: Gasoline Range Organics
DRO: Diesel Range Organics
ORO: Oil Range Organics

1: Method SM4500Cl-B
2: Method 8021B
3: Method 8015M

Bold and highlighted values indicate exceedance of Table I 19.15.29.12 NMAC.



TETRA TECH

TABLE 2
SUMMARY OF ANALYTICAL RESULTS
BACKFILL VALIDATION SAMPLING - INCIDENT nAPP2427157652
MAVERICK PERMIAN, LLC
MCA UNIT #138 RELEASE
LEA COUNTY, NEW MEXICO

| Sample ID | Sample Date | Chloride ¹ | | BTEX ² | | | | | | | | | | TPH ³ | | | | | | | |
|----------------------------------|-------------|----------------------------------|---|-------------------|---|---------|---|--------------|---|---------------|---|------------|---|-------------------------------------|---|-------------------------------------|---|---------|-----|--------------------------------|--|
| | | | | Benzene | | Toluene | | Ethylbenzene | | Total Xylenes | | Total BTEX | | GRO | | DRO | | EXT DRO | | Total TPH (GRO+DRO+EXT DRO) | |
| | | C ₆ - C ₁₀ | | | | | | | | | | | | > C ₁₀ - C ₂₈ | | > C ₂₈ - C ₃₆ | | | | | |
| | | mg/kg | Q | mg/kg | Q | mg/kg | Q | mg/kg | Q | mg/kg | Q | mg/kg | Q | mg/kg | Q | mg/kg | Q | mg/kg | Q | mg/kg | |
| RRALs (Table I 19.15.29.12 NMAC) | | 600 | | 10 | | | | | | | | 50 | | | | | | | 100 | | |
| CS 01 (0-1) | 6/20/2025 | 16 | | <0.050 | | <0.050 | | <0.050 | | <0.150 | | <0.300 | | <10.0 | | 10.4 | | <10.0 | | 10.4 | |

NOTES:

bgs: Below ground surface

mg/kg: Milligrams per kilogram

TPH: Total Petroleum Hydrocarbons

GRO: Gasoline Range Organi 1: Method SM4500CI-B

DRO: Diesel Range Organics 2: Method 8021B

ORO: Oil Range Organics 3: Method 8015M

Bold and highlighted values indicate exceedance of Table I 19.15.29.12 NMAC.

Remediation Report and Closure Request
MCA Unit #138
Incident ID# nAPP2427157652

Maverick Permian LLC
June 27 2025

ATTACHMENT 1 – SITE CHARACTERIZATION DATA

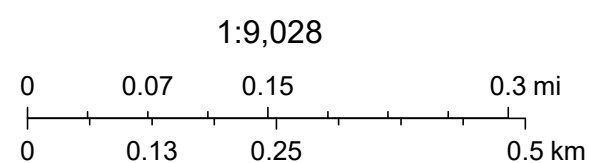
MCA Unit #138 OCD Locations



6/5/2025, 9:57:43 AM

- Legend:

 - Override 1
 - Wells - Large Scale
 - Injection, Active
 - Injection, Cancelled
 - Injection, Plugged
 - Oil, Active
 - Oil, Cancelled
 - Oil, Plugged
 - PLSS Second Division
 - PLSS First Division



Esri, NASA, NGA, USGS, FEMA, Sources: Esri, TomTom, Garmin, FAO, NOAA, USGS, © OpenStreetMap contributors, and the GIS User Community. OCD, BLM

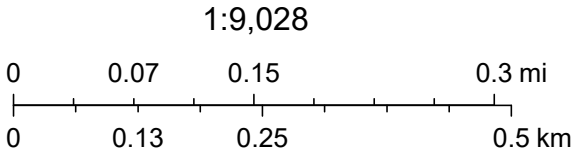
OSE POD Location Map



5/6/2025, 7:44:24 PM

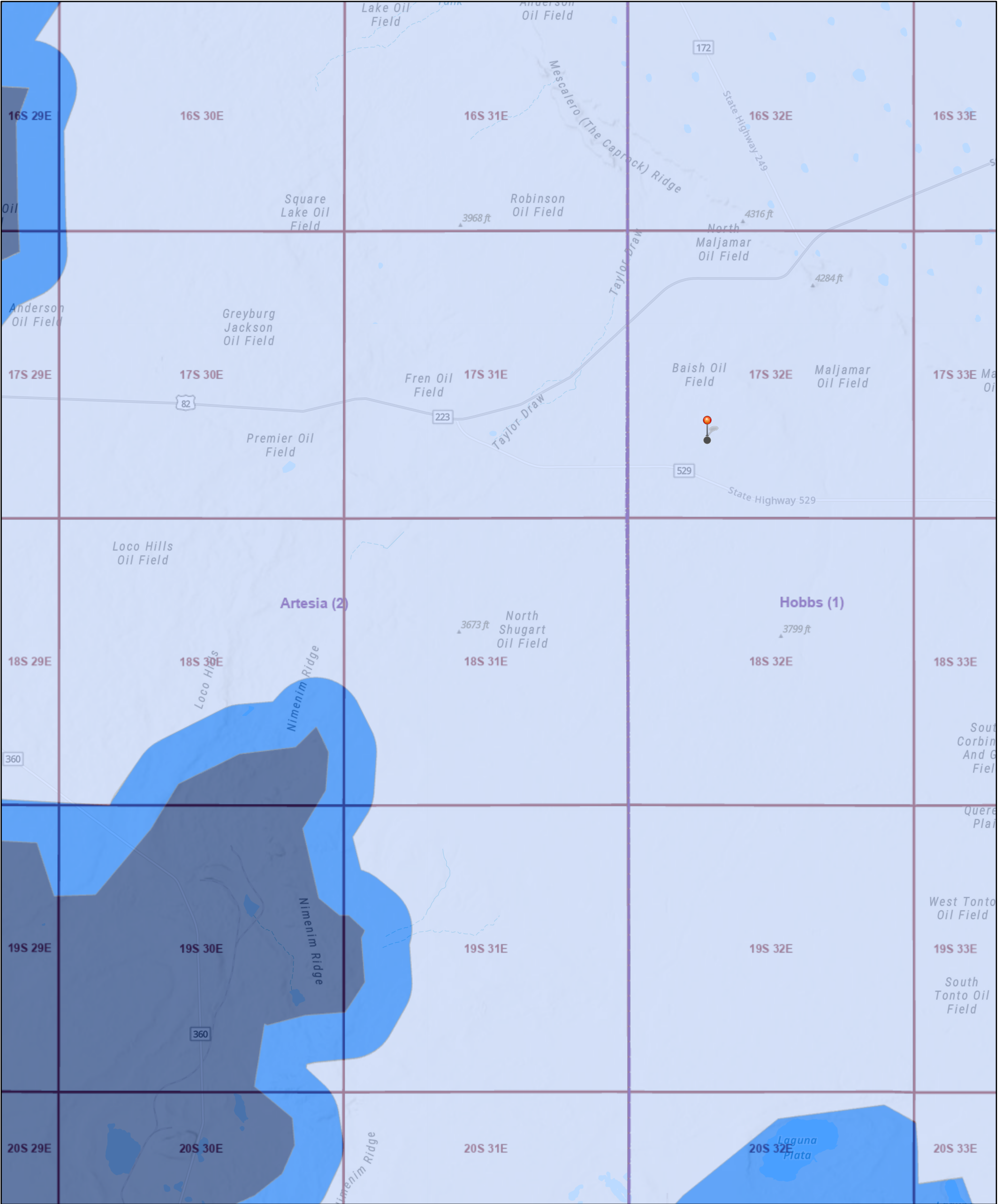
GIS WATERS PODs

- Active
- Plugged
- OSE District Boundary
- New Mexico State Trust Lands
- Both Estates



Sources: Esri, TomTom, Garmin, FAO, NOAA, USGS, (c) OpenStreetMap contributors, and the GIS User Community, Maxar

MCA UNIT #138 Karst Map



5/6/2025, 7:35:26 PM

Override 1

Low

High

Medium

OCD Districts

PLSS Townships

1:144,448

01.252.55 mi

02.254.59 km

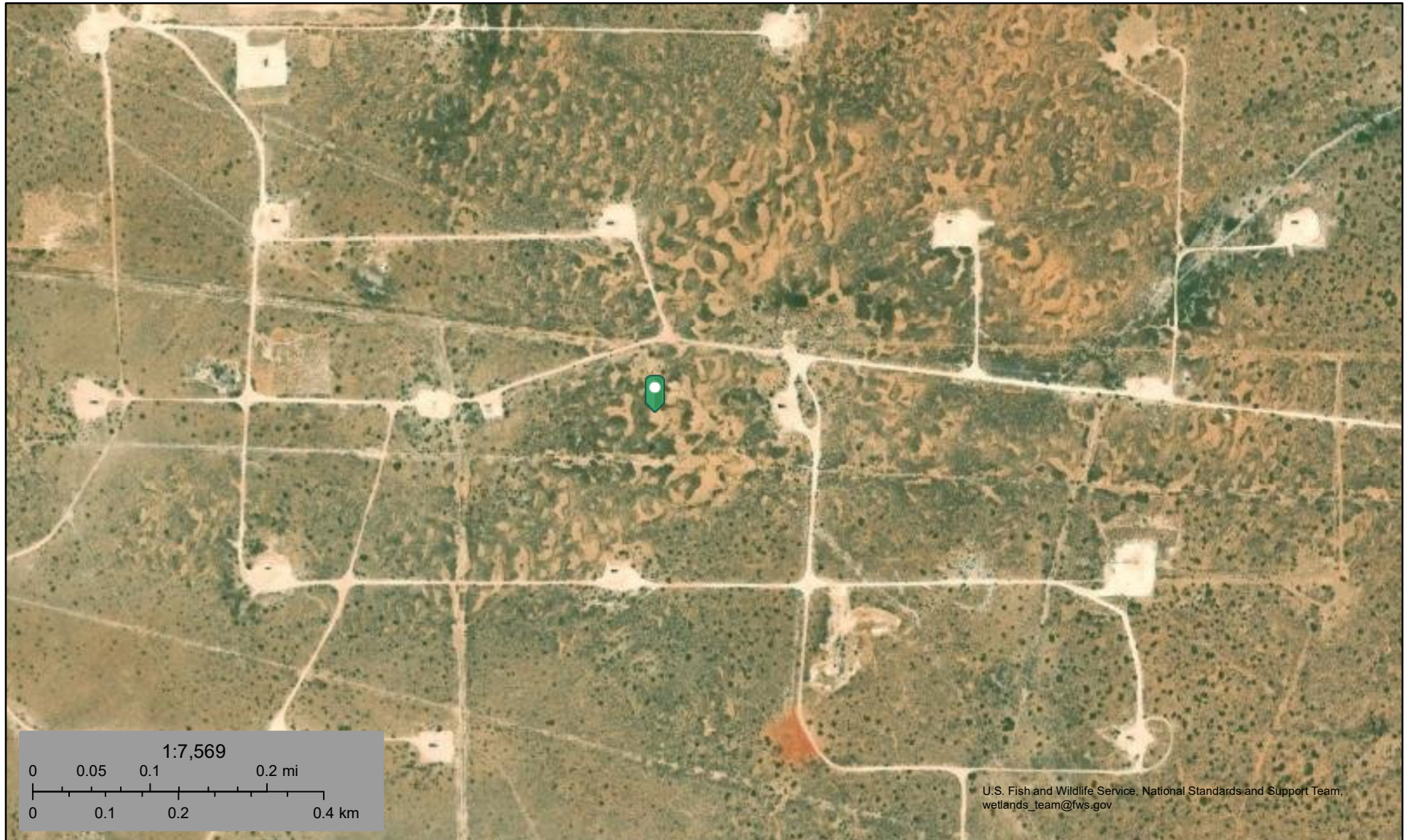
BLM, OCD, New Mexico Tech, Esri, NASA, NGA, USGS, Sources: Esri, TomTom, Garmin, FAO, NOAA, USGS, © OpenStreetMap contributors, and the GIS User Community, OCD, BLM



U.S. Fish and Wildlife Service

National Wetlands Inventory

MCA #138 Release



June 27, 2025

Wetlands



Estuarine and Marine Deepwater



Estuarine and Marine Wetland



Freshwater Emergent Wetland



Freshwater Forested/Shrub Wetland



Freshwater Pond



Lake



Other



Riverine

This map is for general reference only. The US Fish and Wildlife Service is not responsible for the accuracy or currentness of the base data shown on this map. All wetlands related data should be used in accordance with the layer metadata found on the Wetlands Mapper web site.

National Flood Hazard Layer FIRMette



103°47'28"W 32°48'42"N



Released to Imaging: 8/5/2025 1:34:12 PM

1:6,000

103°46'50"W 32°48'12"N

Basemap Imagery Source: USGS National Map 2023

Legend

SEE FIS REPORT FOR DETAILED LEGEND AND INDEX MAP FOR FIRM PANEL LAYOUT

| | | |
|-----------------------------|--|---|
| SPECIAL FLOOD HAZARD AREAS | | Without Base Flood Elevation (BFE) Zone A, V, A99 |
| | | With BFE or Depth Zone AE, AO, AH, VE, AR |
| | | Regulatory Floodway |
| OTHER AREAS OF FLOOD HAZARD | | 0.2% Annual Chance Flood Hazard, Areas of 1% annual chance flood with average depth less than one foot or with drainage areas of less than one square mile Zone X |
| | | Future Conditions 1% Annual Chance Flood Hazard Zone X |
| | | Area with Reduced Flood Risk due to Levee. See Notes. Zone X |
| | | Area with Flood Risk due to Levee Zone D |
| OTHER AREAS | | NO SCREEN Area of Minimal Flood Hazard Zone X |
| | | Effective LOMRs |
| | | Area of Undetermined Flood Hazard Zone D |
| GENERAL STRUCTURES | | Channel, Culvert, or Storm Sewer |
| | | Levee, Dike, or Floodwall |
| OTHER FEATURES | | Cross Sections with 1% Annual Chance Water Surface Elevation |
| | | Cross Sections with 1% Annual Chance Water Surface Elevation |
| | | Coastal Transect |
| | | Base Flood Elevation Line (BFE) |
| | | Limit of Study |
| | | Jurisdiction Boundary |
| | | Coastal Transect Baseline |
| | | Profile Baseline |
| MAP PANELS | | Digital Data Available |
| | | No Digital Data Available |
| | | Unmapped |



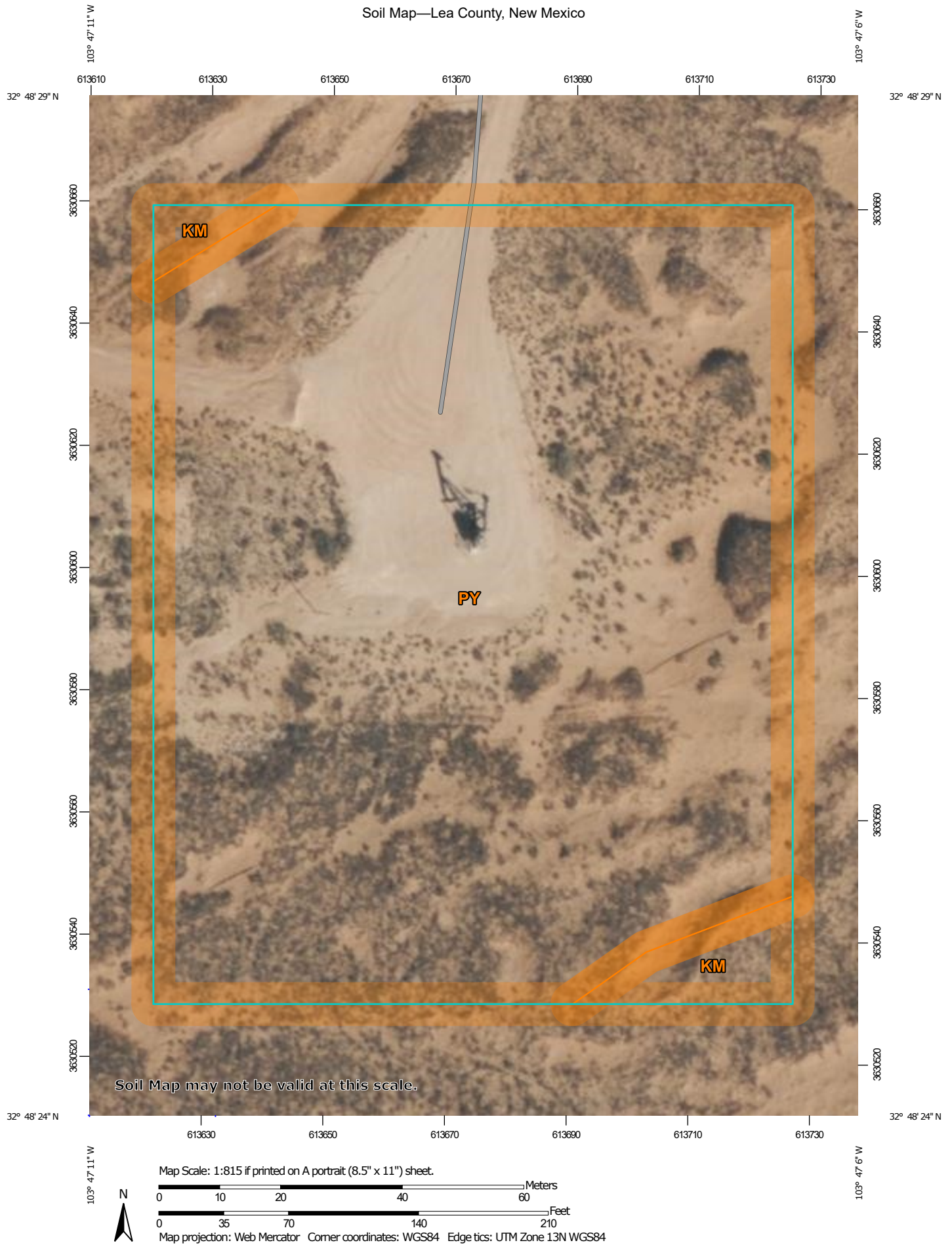
The pin displayed on the map is an approximate point selected by the user and does not represent an authoritative property location.

This map complies with FEMA's standards for the use of digital flood maps if it is not void as described below. The basemap shown complies with FEMA's basemap accuracy standards

The flood hazard information is derived directly from the authoritative NFHL web services provided by FEMA. This map was exported on 5/7/2025 at 12:38 AM and does not reflect changes or amendments subsequent to this date and time. The NFHL and effective information may change or become superseded by new data over time.

This map image is void if the one or more of the following map elements do not appear: basemap imagery, flood zone labels, legend, scale bar, map creation date, community identifiers, FIRM panel number, and FIRM effective date. Map images for unmapped and unmodernized areas cannot be used for regulatory purposes.

Soil Map—Lea County, New Mexico



Natural Resources
Conservation Service


Web Soil Survey
National Cooperative Soil Survey

5/6/2025
Page 1 of 3

Soil Map—Lea County, New Mexico

MAP LEGEND

Area of Interest (AOI)

 Area of Interest (AOI)

Soils

 Soil Map Unit Polygons

 Soil Map Unit Lines

 Soil Map Unit Points

Special Point Features



Blowout



Borrow Pit



Clay Spot



Closed Depression



Gravel Pit



Gravelly Spot



Landfill



Lava Flow



Marsh or swamp



Mine or Quarry



Miscellaneous Water



Perennial Water



Rock Outcrop



Saline Spot



Sandy Spot



Severely Eroded Spot



Sinkhole



Slide or Slip



Sodic Spot



Spoil Area



Stony Spot



Very Stony Spot



Wet Spot



Other



Special Line Features

Water Features



Streams and Canals

Transportation



Rails



Interstate Highways



US Routes



Major Roads



Local Roads

Background



Aerial Photography

MAP INFORMATION

The soil surveys that comprise your AOI were mapped at 1:20,000.

Warning: Soil Map may not be valid at this scale.

Enlargement of maps beyond the scale of mapping can cause misunderstanding of the detail of mapping and accuracy of soil line placement. The maps do not show the small areas of contrasting soils that could have been shown at a more detailed scale.

Please rely on the bar scale on each map sheet for map measurements.

Source of Map: Natural Resources Conservation Service

Web Soil Survey URL:

Coordinate System: Web Mercator (EPSG:3857)

Maps from the Web Soil Survey are based on the Web Mercator projection, which preserves direction and shape but distorts distance and area. A projection that preserves area, such as the Albers equal-area conic projection, should be used if more accurate calculations of distance or area are required.

This product is generated from the USDA-NRCS certified data as of the version date(s) listed below.

Soil Survey Area: Lea County, New Mexico

Survey Area Data: Version 21, Sep 3, 2024

Soil map units are labeled (as space allows) for map scales 1:50,000 or larger.

Date(s) aerial images were photographed: Feb 7, 2020—May 12, 2020

The orthophoto or other base map on which the soil lines were compiled and digitized probably differs from the background imagery displayed on these maps. As a result, some minor shifting of map unit boundaries may be evident.

Map Unit Legend

| Map Unit Symbol | Map Unit Name | Acres in AOI | Percent of AOI |
|-----------------------------|--|--------------|----------------|
| KM | Kermit soils and Dune land, 0 to 12 percent slopes | 0.1 | 3.6% |
| PY | Pyote soils and Dune land | 3.3 | 96.4% |
| Totals for Area of Interest | | 3.4 | 100.0% |

Remediation Report and Closure Request
MCA Unit #138
Incident ID# nAPP2427157652

Maverick Permian LLC
June 27 2025

ATTACHMENT 2 – PHOTOGRAPHIC LOG



● 32.807057°, -103.718414° ±9ft ▲ 4028ft

Jalmat 216
Maverick

Maverick
01 Apr 2025, 1:01:45 PM



☉ 32.807126°, -103.718405° ±13ft ▲ 4028ft

Jalmat 216
Maverick

Maverick
01 Apr 2025, 1:02:11 PM

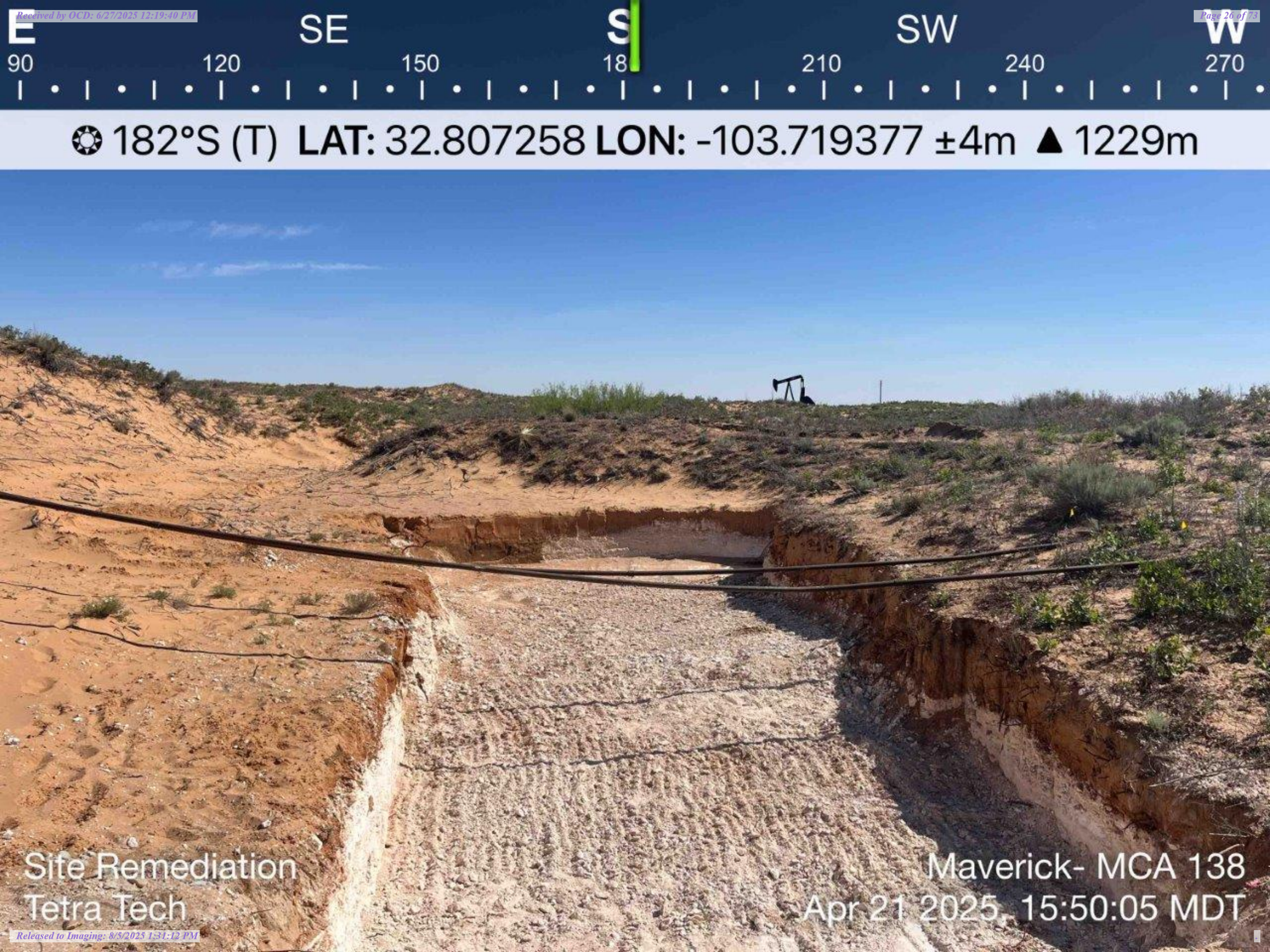


● 32.807289°, -103.718443° ±9ft ▲ 4028ft



MCA 138 Flowline release
Maverick

Maverick
01 Apr 2025, 1:02:30 PM



☉ 182°S (T) LAT: 32.807258 LON: -103.719377 ±4m ▲ 1229m

Site Remediation
Tetra Tech

Maverick- MCA 138
Apr 21 2025, 15:50:05 MDT

S

SW

W

NW

180

210

240

270

300

330

☉ 251°W (T) LAT: 32.807203 LON: -103.719346 ±8m ▲ 1225m



Site Remediation
Tetra Tech

Maverick- MCA 138
Apr 21 2025, 15:50:17 MDT

SE

S

SW

W

120

150

180

210

240

270

300

☀ 210°SW (T) LAT: 32.807207 LON: -103.719368 ±8m ▲ 1224m



Site Remediation
Tetra Tech

Maverick - MCA 138
Apr 21 2025, 15:50:27 MDT



☀ 212°SW (T) LAT: 32.807168 LON: -103.719354 ±9m ▲ 1224m

Site Remediation
Tetra Tech

Maverick - MCA 138
Apr 21 2025, 15:50:46 MDT



☉ 185°S (T) LAT: 32.807205 LON: -103.719409 ±12m ▲ 1224m



Site Remediation
Tetra Tech

Maverick- MCA 138
Apr 21 2025, 15:53:09 MDT



Received by OCD: 6/27/2025 12:19:40 PM Page 31 of 73

BRG: 333°NW (T) LAT: 32.807121 LON: -103.719441 ±3m ALT: 1223m

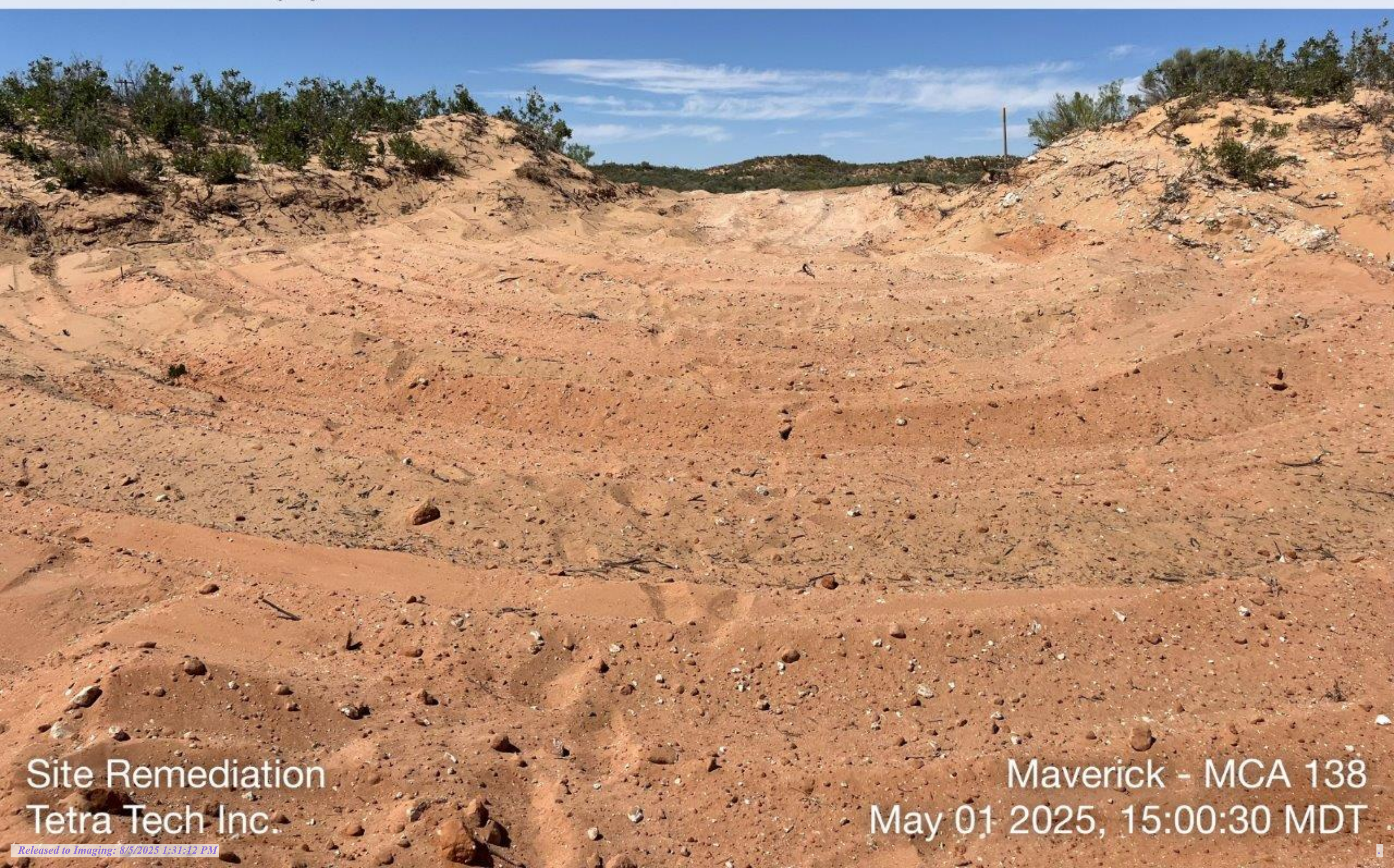
Site Remediation
Tetra Tech Inc.

Maverick - MCA 138
May 01 2025, 15:00:25 MDT

Released to Imaging: 8/5/2025 1:31:12 PM



BRG: 358°N (T) LAT: 32.807119 LON: -103.719443 ±3m ALT: 1223m



Site Remediation
Tetra Tech Inc.

Maverick - MCA 138
May 01 2025, 15:00:30 MDT

SE

S

SW

W

120

150

180

210

240

270

300

BRG: 211°SW (T) LAT: 32.807220 LON: -103.719356 ±4m ALT: 1225m



Site Remediation
Tetra Tech Inc.

Maverick - MCA 138
May 01 2025, 15:00:44 MDT

BRG: 185°S (T) LAT: 32.807299 LON: -103.719429 ±4m ALT: 1225m



Site Remediation
Tetra Tech Inc.

Maverick - MCA 138
May 01 2025, 15:00:59 MDT



BRG: 175°S (T) LAT: 32.807739 LON: -103.719624 ±3m ALT: 1223m



Site Remediation
Tetra Tech Inc.

Maverick - MCA 138
May 01 2025, 15:02:00 MDT

SE

S

SW

W

120

150

180

210

240

270

BRG: 201°S (T) LAT: 32.807775 LON: -103.719606 ±3m ALT: 1223m



Site Remediation
Tetra Tech Inc.

Maverick - MCA 138
May 01 2025, 15:02:06 MDT

Remediation Report and Closure Request
MCA Unit #138
Incident ID# nAPP2427157652

Maverick Permian LLC
June 27 2025

ATTACHMENT 3 – LABORATORY DATA



PHONE (575) 393-2326 ° 101 E. MARLAND ° HOBBS, NM 88240

April 24, 2025

CHUCK TERHUNE

TETRA TECH

901 WEST WALL STREET , STE 100

MIDLAND, TX 79701

RE: MCA - 138

Enclosed are the results of analyses for samples received by the laboratory on 04/22/25 13:53.

Cardinal Laboratories is accredited through Texas NELAP under certificate number TX-C24-00112. Accreditation applies to drinking water, non-potable water and solid and chemical materials. All accredited analytes are denoted by an asterisk (*). For a complete list of accredited analytes and matrices visit the TCEQ website at www.tceq.texas.gov/field/qa/lab_accred_certif.html.

Cardinal Laboratories is accredited through the State of Colorado Department of Public Health and Environment for:

| | |
|------------------|------------------------------|
| Method EPA 552.2 | Haloacetic Acids (HAA-5) |
| Method EPA 524.2 | Total Trihalomethanes (TTHM) |
| Method EPA 524.4 | Regulated VOCs (V1, V2, V3) |

Accreditation applies to public drinking water matrices.

This report meets NELAP requirements and is made up of a cover page, analytical results, and a copy of the original chain-of-custody. If you have any questions concerning this report, please feel free to contact me.

Sincerely,

A handwritten signature in black ink that reads "Celey D. Keene". The signature is written in a cursive, flowing style.

Celey D. Keene

Lab Director/Quality Manager



PHONE (575) 393-2326 ° 101 E. MARLAND ° HOBBS, NM 88240

Analytical Results For:

TETRA TECH
 CHUCK TERHUNE
 901 WEST WALL STREET , STE 100
 MIDLAND TX, 79701
 Fax To: (432) 682-3946

| | | | |
|-------------------|----------------------|---------------------|----------------|
| Received: | 04/22/2025 | Sampling Date: | 04/21/2025 |
| Reported: | 04/24/2025 | Sampling Type: | Soil |
| Project Name: | MCA - 138 | Sampling Condition: | Cool & Intact |
| Project Number: | 212C - MD - 03836 | Sample Received By: | Tamara Oldaker |
| Project Location: | MAVERICK - LEA CO NM | | |

Sample ID: SW -1 (H252402-01)

| BTX 8021B | | mg/kg | | Analyzed By: JH | | | | | |
|----------------|--------|-----------------|------------|-----------------|------|------------|---------------|------|-----------|
| Analyte | Result | Reporting Limit | Analyzed | Method Blank | BS | % Recovery | True Value QC | RPD | Qualifier |
| Benzene* | <0.050 | 0.050 | 04/23/2025 | ND | 2.27 | 113 | 2.00 | 6.75 | |
| Toluene* | <0.050 | 0.050 | 04/23/2025 | ND | 2.15 | 108 | 2.00 | 6.36 | |
| Ethylbenzene* | <0.050 | 0.050 | 04/23/2025 | ND | 2.17 | 108 | 2.00 | 7.43 | |
| Total Xylenes* | <0.150 | 0.150 | 04/23/2025 | ND | 6.74 | 112 | 6.00 | 8.29 | |
| Total BTX | <0.300 | 0.300 | 04/23/2025 | ND | | | | | |

Surrogate: 4-Bromofluorobenzene (PID) 109 % 71.5-134

| Chloride, SM4500Cl-B | | mg/kg | | Analyzed By: AC | | | | | | |
|----------------------|--------|-----------------|------------|-----------------|-----|------------|---------------|------|-----------|--|
| Analyte | Result | Reporting Limit | Analyzed | Method Blank | BS | % Recovery | True Value QC | RPD | Qualifier | |
| Chloride | <16.0 | 16.0 | 04/23/2025 | ND | 416 | 104 | 400 | 0.00 | | |

| TPH 8015M | | mg/kg | | Analyzed By: MS | | | | | |
|------------------|--------|-----------------|------------|-----------------|-----|------------|---------------|------|-----------|
| Analyte | Result | Reporting Limit | Analyzed | Method Blank | BS | % Recovery | True Value QC | RPD | Qualifier |
| GRO C6-C10* | <10.0 | 10.0 | 04/23/2025 | ND | 195 | 97.7 | 200 | 1.88 | |
| DRO >C10-C28* | <10.0 | 10.0 | 04/23/2025 | ND | 200 | 100 | 200 | 1.80 | |
| EXT DRO >C28-C36 | <10.0 | 10.0 | 04/23/2025 | ND | | | | | |

Surrogate: 1-Chlorooctane 76.1 % 44.4-145

Surrogate: 1-Chlorooctadecane 70.0 % 40.6-153

Cardinal Laboratories

*=Accredited Analyte

PLEASE NOTE: Liability and Damages. Cardinal's liability and client's exclusive remedy for any claim arising, whether based in contract or tort, shall be limited to the amount paid by client for analyses. All claims, including those for negligence and any other cause whatsoever shall be deemed waived unless made in writing and received by Cardinal within thirty (30) days after completion of the applicable service. In no event shall Cardinal be liable for incidental or consequential damages, including, without limitation, business interruptions, loss of use, or loss of profits incurred by client, its subsidiaries, affiliates or successors arising out of or related to the performance of the services hereunder by Cardinal, regardless of whether such claim is based upon any of the above stated reasons or otherwise. Results relate only to the samples identified above. This report shall not be reproduced except in full with written approval of Cardinal Laboratories.

Celey D. Keene, Lab Director/Quality Manager



PHONE (575) 393-2326 ° 101 E. MARLAND ° HOBBS, NM 88240

Analytical Results For:

TETRA TECH
 CHUCK TERHUNE
 901 WEST WALL STREET , STE 100
 MIDLAND TX, 79701
 Fax To: (432) 682-3946

Received: 04/22/2025
 Reported: 04/24/2025
 Project Name: MCA - 138
 Project Number: 212C - MD - 03836
 Project Location: MAVERICK - LEA CO NM

Sampling Date: 04/21/2025
 Sampling Type: Soil
 Sampling Condition: Cool & Intact
 Sample Received By: Tamara Oldaker

Sample ID: SW -2 (H252402-02)

| BTEx 8021B | | mg/kg | | Analyzed By: JH | | | | | |
|----------------|--------|-----------------|------------|-----------------|------|------------|---------------|------|-----------|
| Analyte | Result | Reporting Limit | Analyzed | Method Blank | BS | % Recovery | True Value QC | RPD | Qualifier |
| Benzene* | <0.050 | 0.050 | 04/23/2025 | ND | 2.27 | 113 | 2.00 | 6.75 | |
| Toluene* | <0.050 | 0.050 | 04/23/2025 | ND | 2.15 | 108 | 2.00 | 6.36 | |
| Ethylbenzene* | <0.050 | 0.050 | 04/23/2025 | ND | 2.17 | 108 | 2.00 | 7.43 | |
| Total Xylenes* | <0.150 | 0.150 | 04/23/2025 | ND | 6.74 | 112 | 6.00 | 8.29 | |
| Total BTEX | <0.300 | 0.300 | 04/23/2025 | ND | | | | | |

Surrogate: 4-Bromofluorobenzene (PID) 107 % 71.5-134

| Chloride, SM4500Cl-B | | mg/kg | | Analyzed By: AC | | | | | |
|----------------------|--------|-----------------|------------|-----------------|-----|------------|---------------|------|-----------|
| Analyte | Result | Reporting Limit | Analyzed | Method Blank | BS | % Recovery | True Value QC | RPD | Qualifier |
| Chloride | 32.0 | 16.0 | 04/23/2025 | ND | 416 | 104 | 400 | 0.00 | |

| TPH 8015M | | mg/kg | | Analyzed By: MS | | | | | |
|------------------|--------|-----------------|------------|-----------------|-----|------------|---------------|------|-----------|
| Analyte | Result | Reporting Limit | Analyzed | Method Blank | BS | % Recovery | True Value QC | RPD | Qualifier |
| GRO C6-C10* | <10.0 | 10.0 | 04/23/2025 | ND | 195 | 97.7 | 200 | 1.88 | |
| DRO >C10-C28* | <10.0 | 10.0 | 04/23/2025 | ND | 200 | 100 | 200 | 1.80 | |
| EXT DRO >C28-C36 | <10.0 | 10.0 | 04/23/2025 | ND | | | | | |

Surrogate: 1-Chlorooctane 75.4 % 44.4-145

Surrogate: 1-Chlorooctadecane 69.6 % 40.6-153

Cardinal Laboratories

*=Accredited Analyte

PLEASE NOTE: Liability and Damages. Cardinal's liability and client's exclusive remedy for any claim arising, whether based in contract or tort, shall be limited to the amount paid by client for analyses. All claims, including those for negligence and any other cause whatsoever shall be deemed waived unless made in writing and received by Cardinal within thirty (30) days after completion of the applicable service. In no event shall Cardinal be liable for incidental or consequential damages, including, without limitation, business interruptions, loss of use, or loss of profits incurred by client, its subsidiaries, affiliates or successors arising out of or related to the performance of the services hereunder by Cardinal, regardless of whether such claim is based upon any of the above stated reasons or otherwise. Results relate only to the samples identified above. This report shall not be reproduced except in full with written approval of Cardinal Laboratories.

Celey D. Keene, Lab Director/Quality Manager



PHONE (575) 393-2326 ° 101 E. MARLAND ° HOBBS, NM 88240

Analytical Results For:

TETRA TECH
 CHUCK TERHUNE
 901 WEST WALL STREET , STE 100
 MIDLAND TX, 79701
 Fax To: (432) 682-3946

Received: 04/22/2025
 Reported: 04/24/2025
 Project Name: MCA - 138
 Project Number: 212C - MD - 03836
 Project Location: MAVERICK - LEA CO NM

Sampling Date: 04/21/2025
 Sampling Type: Soil
 Sampling Condition: Cool & Intact
 Sample Received By: Tamara Oldaker

Sample ID: SW -3 (H252402-03)

| BTEx 8021B | | mg/kg | | Analyzed By: JH | | | | | |
|----------------|--------|-----------------|------------|-----------------|------|------------|---------------|------|-----------|
| Analyte | Result | Reporting Limit | Analyzed | Method Blank | BS | % Recovery | True Value QC | RPD | Qualifier |
| Benzene* | <0.050 | 0.050 | 04/23/2025 | ND | 2.27 | 113 | 2.00 | 6.75 | |
| Toluene* | <0.050 | 0.050 | 04/23/2025 | ND | 2.15 | 108 | 2.00 | 6.36 | |
| Ethylbenzene* | <0.050 | 0.050 | 04/23/2025 | ND | 2.17 | 108 | 2.00 | 7.43 | |
| Total Xylenes* | <0.150 | 0.150 | 04/23/2025 | ND | 6.74 | 112 | 6.00 | 8.29 | |
| Total BTEX | <0.300 | 0.300 | 04/23/2025 | ND | | | | | |

Surrogate: 4-Bromofluorobenzene (PID) 106 % 71.5-134

| Chloride, SM4500Cl-B | | mg/kg | | Analyzed By: AC | | | | | | |
|----------------------|--------|-----------------|------------|-----------------|-----|------------|---------------|------|-----------|--|
| Analyte | Result | Reporting Limit | Analyzed | Method Blank | BS | % Recovery | True Value QC | RPD | Qualifier | |
| Chloride | <16.0 | 16.0 | 04/23/2025 | ND | 416 | 104 | 400 | 0.00 | | |

| TPH 8015M | | mg/kg | | Analyzed By: MS | | | | | |
|------------------|--------|-----------------|------------|-----------------|-----|------------|---------------|------|-----------|
| Analyte | Result | Reporting Limit | Analyzed | Method Blank | BS | % Recovery | True Value QC | RPD | Qualifier |
| GRO C6-C10* | <10.0 | 10.0 | 04/23/2025 | ND | 195 | 97.7 | 200 | 1.88 | |
| DRO >C10-C28* | <10.0 | 10.0 | 04/23/2025 | ND | 200 | 100 | 200 | 1.80 | |
| EXT DRO >C28-C36 | <10.0 | 10.0 | 04/23/2025 | ND | | | | | |

Surrogate: 1-Chlorooctane 87.1 % 44.4-145

Surrogate: 1-Chlorooctadecane 80.9 % 40.6-153

Cardinal Laboratories

*=Accredited Analyte

PLEASE NOTE: Liability and Damages. Cardinal's liability and client's exclusive remedy for any claim arising, whether based in contract or tort, shall be limited to the amount paid by client for analyses. All claims, including those for negligence and any other cause whatsoever shall be deemed waived unless made in writing and received by Cardinal within thirty (30) days after completion of the applicable service. In no event shall Cardinal be liable for incidental or consequential damages, including, without limitation, business interruptions, loss of use, or loss of profits incurred by client, its subsidiaries, affiliates or successors arising out of or related to the performance of the services hereunder by Cardinal, regardless of whether such claim is based upon any of the above stated reasons or otherwise. Results relate only to the samples identified above. This report shall not be reproduced except in full with written approval of Cardinal Laboratories.

Celey D. Keene, Lab Director/Quality Manager



PHONE (575) 393-2326 ° 101 E. MARLAND ° HOBBS, NM 88240

Analytical Results For:

TETRA TECH
 CHUCK TERHUNE
 901 WEST WALL STREET , STE 100
 MIDLAND TX, 79701
 Fax To: (432) 682-3946

| | | | |
|-------------------|----------------------|---------------------|----------------|
| Received: | 04/22/2025 | Sampling Date: | 04/21/2025 |
| Reported: | 04/24/2025 | Sampling Type: | Soil |
| Project Name: | MCA - 138 | Sampling Condition: | Cool & Intact |
| Project Number: | 212C - MD - 03836 | Sample Received By: | Tamara Oldaker |
| Project Location: | MAVERICK - LEA CO NM | | |

Sample ID: SW -4 (H252402-04)

| BTX 8021B | | mg/kg | | Analyzed By: JH | | | | | |
|----------------|--------|-----------------|------------|-----------------|------|------------|---------------|------|-----------|
| Analyte | Result | Reporting Limit | Analyzed | Method Blank | BS | % Recovery | True Value QC | RPD | Qualifier |
| Benzene* | <0.050 | 0.050 | 04/23/2025 | ND | 2.27 | 113 | 2.00 | 6.75 | |
| Toluene* | <0.050 | 0.050 | 04/23/2025 | ND | 2.15 | 108 | 2.00 | 6.36 | |
| Ethylbenzene* | <0.050 | 0.050 | 04/23/2025 | ND | 2.17 | 108 | 2.00 | 7.43 | |
| Total Xylenes* | <0.150 | 0.150 | 04/23/2025 | ND | 6.74 | 112 | 6.00 | 8.29 | |
| Total BTX | <0.300 | 0.300 | 04/23/2025 | ND | | | | | |

Surrogate: 4-Bromofluorobenzene (PID) 104 % 71.5-134

| Chloride, SM4500CI-B | | mg/kg | | Analyzed By: AC | | | | | | |
|----------------------|--------|-----------------|------------|-----------------|-----|------------|---------------|------|-----------|--|
| Analyte | Result | Reporting Limit | Analyzed | Method Blank | BS | % Recovery | True Value QC | RPD | Qualifier | |
| Chloride | 16.0 | 16.0 | 04/23/2025 | ND | 416 | 104 | 400 | 0.00 | | |

| TPH 8015M | | mg/kg | | Analyzed By: MS | | | | | |
|------------------|--------|-----------------|------------|-----------------|-----|------------|---------------|------|-----------|
| Analyte | Result | Reporting Limit | Analyzed | Method Blank | BS | % Recovery | True Value QC | RPD | Qualifier |
| GRO C6-C10* | <10.0 | 10.0 | 04/23/2025 | ND | 195 | 97.7 | 200 | 1.88 | |
| DRO >C10-C28* | <10.0 | 10.0 | 04/23/2025 | ND | 200 | 100 | 200 | 1.80 | |
| EXT DRO >C28-C36 | <10.0 | 10.0 | 04/23/2025 | ND | | | | | |

Surrogate: 1-Chlorooctane 94.4 % 44.4-145

Surrogate: 1-Chlorooctadecane 91.0 % 40.6-153

Cardinal Laboratories

*=Accredited Analyte

PLEASE NOTE: Liability and Damages. Cardinal's liability and client's exclusive remedy for any claim arising, whether based in contract or tort, shall be limited to the amount paid by client for analyses. All claims, including those for negligence and any other cause whatsoever shall be deemed waived unless made in writing and received by Cardinal within thirty (30) days after completion of the applicable service. In no event shall Cardinal be liable for incidental or consequential damages, including, without limitation, business interruptions, loss of use, or loss of profits incurred by client, its subsidiaries, affiliates or successors arising out of or related to the performance of the services hereunder by Cardinal, regardless of whether such claim is based upon any of the above stated reasons or otherwise. Results relate only to the samples identified above. This report shall not be reproduced except in full with written approval of Cardinal Laboratories.

Celey D. Keene, Lab Director/Quality Manager



PHONE (575) 393-2326 ° 101 E. MARLAND ° HOBBS, NM 88240

Analytical Results For:

TETRA TECH
 CHUCK TERHUNE
 901 WEST WALL STREET , STE 100
 MIDLAND TX, 79701
 Fax To: (432) 682-3946

| | | | |
|-------------------|----------------------|---------------------|----------------|
| Received: | 04/22/2025 | Sampling Date: | 04/21/2025 |
| Reported: | 04/24/2025 | Sampling Type: | Soil |
| Project Name: | MCA - 138 | Sampling Condition: | Cool & Intact |
| Project Number: | 212C - MD - 03836 | Sample Received By: | Tamara Oldaker |
| Project Location: | MAVERICK - LEA CO NM | | |

Sample ID: SW -5 (H252402-05)

| BTEx 8021B | | mg/kg | | Analyzed By: JH | | | | | | |
|----------------|--------|-----------------|------------|-----------------|------|------------|---------------|------|-----------|--|
| Analyte | Result | Reporting Limit | Analyzed | Method Blank | BS | % Recovery | True Value QC | RPD | Qualifier | |
| Benzene* | <0.050 | 0.050 | 04/23/2025 | ND | 2.27 | 113 | 2.00 | 6.75 | | |
| Toluene* | <0.050 | 0.050 | 04/23/2025 | ND | 2.15 | 108 | 2.00 | 6.36 | | |
| Ethylbenzene* | <0.050 | 0.050 | 04/23/2025 | ND | 2.17 | 108 | 2.00 | 7.43 | | |
| Total Xylenes* | <0.150 | 0.150 | 04/23/2025 | ND | 6.74 | 112 | 6.00 | 8.29 | | |
| Total BTEX | <0.300 | 0.300 | 04/23/2025 | ND | | | | | | |

Surrogate: 4-Bromofluorobenzene (PID) 108 % 71.5-134

| Chloride, SM4500Cl-B | | mg/kg | | Analyzed By: AC | | | | | | |
|----------------------|--------|-----------------|------------|-----------------|-----|------------|---------------|------|-----------|--|
| Analyte | Result | Reporting Limit | Analyzed | Method Blank | BS | % Recovery | True Value QC | RPD | Qualifier | |
| Chloride | <16.0 | 16.0 | 04/23/2025 | ND | 416 | 104 | 400 | 0.00 | | |

| TPH 8015M | | mg/kg | | Analyzed By: MS | | | | | |
|------------------|--------|-----------------|------------|-----------------|-----|------------|---------------|------|-----------|
| Analyte | Result | Reporting Limit | Analyzed | Method Blank | BS | % Recovery | True Value QC | RPD | Qualifier |
| GRO C6-C10* | <10.0 | 10.0 | 04/23/2025 | ND | 195 | 97.7 | 200 | 1.88 | |
| DRO >C10-C28* | <10.0 | 10.0 | 04/23/2025 | ND | 200 | 100 | 200 | 1.80 | |
| EXT DRO >C28-C36 | <10.0 | 10.0 | 04/23/2025 | ND | | | | | |

Surrogate: 1-Chlorooctane 93.6 % 44.4-145

Surrogate: 1-Chlorooctadecane 88.6 % 40.6-153

Cardinal Laboratories

*=Accredited Analyte

PLEASE NOTE: Liability and Damages. Cardinal's liability and client's exclusive remedy for any claim arising, whether based in contract or tort, shall be limited to the amount paid by client for analyses. All claims, including those for negligence and any other cause whatsoever shall be deemed waived unless made in writing and received by Cardinal within thirty (30) days after completion of the applicable service. In no event shall Cardinal be liable for incidental or consequential damages, including, without limitation, business interruptions, loss of use, or loss of profits incurred by client, its subsidiaries, affiliates or successors arising out of or related to the performance of the services hereunder by Cardinal, regardless of whether such claim is based upon any of the above stated reasons or otherwise. Results relate only to the samples identified above. This report shall not be reproduced except in full with written approval of Cardinal Laboratories.

Celey D. Keene, Lab Director/Quality Manager



PHONE (575) 393-2326 ° 101 E. MARLAND ° HOBBS, NM 88240

Analytical Results For:

TETRA TECH
 CHUCK TERHUNE
 901 WEST WALL STREET , STE 100
 MIDLAND TX, 79701
 Fax To: (432) 682-3946

| | | | |
|-------------------|----------------------|---------------------|----------------|
| Received: | 04/22/2025 | Sampling Date: | 04/21/2025 |
| Reported: | 04/24/2025 | Sampling Type: | Soil |
| Project Name: | MCA - 138 | Sampling Condition: | Cool & Intact |
| Project Number: | 212C - MD - 03836 | Sample Received By: | Tamara Oldaker |
| Project Location: | MAVERICK - LEA CO NM | | |

Sample ID: SW -6 (H252402-06)

| BTX 8021B | | mg/kg | | Analyzed By: JH | | | | | | |
|----------------|--------|-----------------|------------|-----------------|------|------------|---------------|------|-----------|--|
| Analyte | Result | Reporting Limit | Analyzed | Method Blank | BS | % Recovery | True Value QC | RPD | Qualifier | |
| Benzene* | <0.050 | 0.050 | 04/23/2025 | ND | 2.18 | 109 | 2.00 | 2.50 | | |
| Toluene* | <0.050 | 0.050 | 04/23/2025 | ND | 2.21 | 110 | 2.00 | 2.73 | | |
| Ethylbenzene* | <0.050 | 0.050 | 04/23/2025 | ND | 2.17 | 108 | 2.00 | 3.33 | | |
| Total Xylenes* | <0.150 | 0.150 | 04/23/2025 | ND | 6.38 | 106 | 6.00 | 3.42 | | |
| Total BTX | <0.300 | 0.300 | 04/23/2025 | ND | | | | | | |

Surrogate: 4-Bromofluorobenzene (PID) 99.9 % 71.5-134

| Chloride, SM4500CI-B | | mg/kg | | Analyzed By: AC | | | | | | |
|----------------------|--------|-----------------|------------|-----------------|-----|------------|---------------|------|-----------|--|
| Analyte | Result | Reporting Limit | Analyzed | Method Blank | BS | % Recovery | True Value QC | RPD | Qualifier | |
| Chloride | <16.0 | 16.0 | 04/23/2025 | ND | 416 | 104 | 400 | 0.00 | | |

| TPH 8015M | | mg/kg | | Analyzed By: MS | | | | | |
|------------------|--------|-----------------|------------|-----------------|-----|------------|---------------|------|-----------|
| Analyte | Result | Reporting Limit | Analyzed | Method Blank | BS | % Recovery | True Value QC | RPD | Qualifier |
| GRO C6-C10* | <10.0 | 10.0 | 04/23/2025 | ND | 195 | 97.7 | 200 | 1.88 | |
| DRO >C10-C28* | <10.0 | 10.0 | 04/23/2025 | ND | 200 | 100 | 200 | 1.80 | |
| EXT DRO >C28-C36 | <10.0 | 10.0 | 04/23/2025 | ND | | | | | |

Surrogate: 1-Chlorooctane 93.2 % 44.4-145

Surrogate: 1-Chlorooctadecane 88.5 % 40.6-153

Cardinal Laboratories

*=Accredited Analyte

PLEASE NOTE: Liability and Damages. Cardinal's liability and client's exclusive remedy for any claim arising, whether based in contract or tort, shall be limited to the amount paid by client for analyses. All claims, including those for negligence and any other cause whatsoever shall be deemed waived unless made in writing and received by Cardinal within thirty (30) days after completion of the applicable service. In no event shall Cardinal be liable for incidental or consequential damages, including, without limitation, business interruptions, loss of use, or loss of profits incurred by client, its subsidiaries, affiliates or successors arising out of or related to the performance of the services hereunder by Cardinal, regardless of whether such claim is based upon any of the above stated reasons or otherwise. Results relate only to the samples identified above. This report shall not be reproduced except in full with written approval of Cardinal Laboratories.

Celey D. Keene, Lab Director/Quality Manager



PHONE (575) 393-2326 ° 101 E. MARLAND ° HOBBS, NM 88240

Analytical Results For:

TETRA TECH
 CHUCK TERHUNE
 901 WEST WALL STREET , STE 100
 MIDLAND TX, 79701
 Fax To: (432) 682-3946

Received: 04/22/2025
 Reported: 04/24/2025
 Project Name: MCA - 138
 Project Number: 212C - MD - 03836
 Project Location: MAVERICK - LEA CO NM

Sampling Date: 04/21/2025
 Sampling Type: Soil
 Sampling Condition: Cool & Intact
 Sample Received By: Tamara Oldaker

Sample ID: SW -7 (H252402-07)

| BTEx 8021B | | mg/kg | | Analyzed By: JH | | | | | |
|----------------|--------|-----------------|------------|-----------------|------|------------|---------------|------|-----------|
| Analyte | Result | Reporting Limit | Analyzed | Method Blank | BS | % Recovery | True Value QC | RPD | Qualifier |
| Benzene* | <0.050 | 0.050 | 04/23/2025 | ND | 2.18 | 109 | 2.00 | 2.50 | |
| Toluene* | <0.050 | 0.050 | 04/23/2025 | ND | 2.21 | 110 | 2.00 | 2.73 | |
| Ethylbenzene* | <0.050 | 0.050 | 04/23/2025 | ND | 2.17 | 108 | 2.00 | 3.33 | |
| Total Xylenes* | <0.150 | 0.150 | 04/23/2025 | ND | 6.38 | 106 | 6.00 | 3.42 | |
| Total BTEX | <0.300 | 0.300 | 04/23/2025 | ND | | | | | |

Surrogate: 4-Bromofluorobenzene (PID) 101 % 71.5-134

| Chloride, SM4500Cl-B | | mg/kg | | Analyzed By: AC | | | | | |
|----------------------|--------|-----------------|------------|-----------------|-----|------------|---------------|------|-----------|
| Analyte | Result | Reporting Limit | Analyzed | Method Blank | BS | % Recovery | True Value QC | RPD | Qualifier |
| Chloride | 32.0 | 16.0 | 04/23/2025 | ND | 416 | 104 | 400 | 0.00 | |

| TPH 8015M | | mg/kg | | Analyzed By: MS | | | | | |
|------------------|--------|-----------------|------------|-----------------|-----|------------|---------------|------|-----------|
| Analyte | Result | Reporting Limit | Analyzed | Method Blank | BS | % Recovery | True Value QC | RPD | Qualifier |
| GRO C6-C10* | <10.0 | 10.0 | 04/23/2025 | ND | 195 | 97.7 | 200 | 1.88 | |
| DRO >C10-C28* | <10.0 | 10.0 | 04/23/2025 | ND | 200 | 100 | 200 | 1.80 | |
| EXT DRO >C28-C36 | <10.0 | 10.0 | 04/23/2025 | ND | | | | | |

Surrogate: 1-Chlorooctane 87.8 % 44.4-145

Surrogate: 1-Chlorooctadecane 84.9 % 40.6-153

Cardinal Laboratories

*=Accredited Analyte

PLEASE NOTE: Liability and Damages. Cardinal's liability and client's exclusive remedy for any claim arising, whether based in contract or tort, shall be limited to the amount paid by client for analyses. All claims, including those for negligence and any other cause whatsoever shall be deemed waived unless made in writing and received by Cardinal within thirty (30) days after completion of the applicable service. In no event shall Cardinal be liable for incidental or consequential damages, including, without limitation, business interruptions, loss of use, or loss of profits incurred by client, its subsidiaries, affiliates or successors arising out of or related to the performance of the services hereunder by Cardinal, regardless of whether such claim is based upon any of the above stated reasons or otherwise. Results relate only to the samples identified above. This report shall not be reproduced except in full with written approval of Cardinal Laboratories.

Celey D. Keene, Lab Director/Quality Manager



PHONE (575) 393-2326 ° 101 E. MARLAND ° HOBBS, NM 88240

Analytical Results For:

TETRA TECH
 CHUCK TERHUNE
 901 WEST WALL STREET , STE 100
 MIDLAND TX, 79701
 Fax To: (432) 682-3946

| | | | |
|-------------------|----------------------|---------------------|----------------|
| Received: | 04/22/2025 | Sampling Date: | 04/21/2025 |
| Reported: | 04/24/2025 | Sampling Type: | Soil |
| Project Name: | MCA - 138 | Sampling Condition: | Cool & Intact |
| Project Number: | 212C - MD - 03836 | Sample Received By: | Tamara Oldaker |
| Project Location: | MAVERICK - LEA CO NM | | |

Sample ID: BH -1 (4.0') (H252402-08)

| BTEx 8021B | | mg/kg | | Analyzed By: JH | | | | | | |
|----------------|--------|-----------------|------------|-----------------|------|------------|---------------|------|-----------|--|
| Analyte | Result | Reporting Limit | Analyzed | Method Blank | BS | % Recovery | True Value QC | RPD | Qualifier | |
| Benzene* | <0.050 | 0.050 | 04/23/2025 | ND | 2.13 | 107 | 2.00 | 1.91 | | |
| Toluene* | <0.050 | 0.050 | 04/23/2025 | ND | 2.14 | 107 | 2.00 | 3.79 | | |
| Ethylbenzene* | <0.050 | 0.050 | 04/23/2025 | ND | 2.30 | 115 | 2.00 | 4.65 | | |
| Total Xylenes* | <0.150 | 0.150 | 04/23/2025 | ND | 7.04 | 117 | 6.00 | 4.57 | | |
| Total BTEX | <0.300 | 0.300 | 04/23/2025 | ND | | | | | | |

Surrogate: 4-Bromofluorobenzene (PID) 110 % 71.5-134

| Chloride, SM4500Cl-B | | mg/kg | | Analyzed By: AC | | | | | | |
|----------------------|--------|-----------------|------------|-----------------|-----|------------|---------------|------|-----------|--|
| Analyte | Result | Reporting Limit | Analyzed | Method Blank | BS | % Recovery | True Value QC | RPD | Qualifier | |
| Chloride | <16.0 | 16.0 | 04/23/2025 | ND | 416 | 104 | 400 | 0.00 | | |

| TPH 8015M | | mg/kg | | Analyzed By: MS | | | | | |
|------------------|--------|-----------------|------------|-----------------|-----|------------|---------------|------|-----------|
| Analyte | Result | Reporting Limit | Analyzed | Method Blank | BS | % Recovery | True Value QC | RPD | Qualifier |
| GRO C6-C10* | <10.0 | 10.0 | 04/23/2025 | ND | 195 | 97.7 | 200 | 1.88 | |
| DRO >C10-C28* | <10.0 | 10.0 | 04/23/2025 | ND | 200 | 100 | 200 | 1.80 | |
| EXT DRO >C28-C36 | <10.0 | 10.0 | 04/23/2025 | ND | | | | | |

Surrogate: 1-Chlorooctane 91.0 % 44.4-145

Surrogate: 1-Chlorooctadecane 87.5 % 40.6-153

Cardinal Laboratories

*=Accredited Analyte

PLEASE NOTE: Liability and Damages. Cardinal's liability and client's exclusive remedy for any claim arising, whether based in contract or tort, shall be limited to the amount paid by client for analyses. All claims, including those for negligence and any other cause whatsoever shall be deemed waived unless made in writing and received by Cardinal within thirty (30) days after completion of the applicable service. In no event shall Cardinal be liable for incidental or consequential damages, including, without limitation, business interruptions, loss of use, or loss of profits incurred by client, its subsidiaries, affiliates or successors arising out of or related to the performance of the services hereunder by Cardinal, regardless of whether such claim is based upon any of the above stated reasons or otherwise. Results relate only to the samples identified above. This report shall not be reproduced except in full with written approval of Cardinal Laboratories.

Celey D. Keene, Lab Director/Quality Manager



PHONE (575) 393-2326 ° 101 E. MARLAND ° HOBBS, NM 88240

Analytical Results For:

TETRA TECH
 CHUCK TERHUNE
 901 WEST WALL STREET , STE 100
 MIDLAND TX, 79701
 Fax To: (432) 682-3946

| | | | |
|-------------------|----------------------|---------------------|----------------|
| Received: | 04/22/2025 | Sampling Date: | 04/21/2025 |
| Reported: | 04/24/2025 | Sampling Type: | Soil |
| Project Name: | MCA - 138 | Sampling Condition: | Cool & Intact |
| Project Number: | 212C - MD - 03836 | Sample Received By: | Tamara Oldaker |
| Project Location: | MAVERICK - LEA CO NM | | |

Sample ID: BH -2 (4.0') (H252402-09)

| BTEx 8021B | | mg/kg | | Analyzed By: JH | | | | | | |
|----------------|--------|-----------------|------------|-----------------|------|------------|---------------|------|-----------|--|
| Analyte | Result | Reporting Limit | Analyzed | Method Blank | BS | % Recovery | True Value QC | RPD | Qualifier | |
| Benzene* | <0.050 | 0.050 | 04/24/2025 | ND | 1.77 | 88.3 | 2.00 | 11.1 | | |
| Toluene* | <0.050 | 0.050 | 04/24/2025 | ND | 1.76 | 87.9 | 2.00 | 11.3 | | |
| Ethylbenzene* | <0.050 | 0.050 | 04/24/2025 | ND | 1.86 | 92.8 | 2.00 | 9.81 | | |
| Total Xylenes* | <0.150 | 0.150 | 04/24/2025 | ND | 5.85 | 97.5 | 6.00 | 10.0 | | |
| Total BTEX | <0.300 | 0.300 | 04/24/2025 | ND | | | | | | |

Surrogate: 4-Bromofluorobenzene (PID) 117 % 71.5-134

| Chloride, SM4500Cl-B | | mg/kg | | Analyzed By: AC | | | | | |
|----------------------|--------|-----------------|------------|-----------------|-----|------------|---------------|------|-----------|
| Analyte | Result | Reporting Limit | Analyzed | Method Blank | BS | % Recovery | True Value QC | RPD | Qualifier |
| Chloride | 16.0 | 16.0 | 04/23/2025 | ND | 416 | 104 | 400 | 0.00 | |

| TPH 8015M | | mg/kg | | Analyzed By: MS | | | | | |
|------------------|--------|-----------------|------------|-----------------|-----|------------|---------------|------|-----------|
| Analyte | Result | Reporting Limit | Analyzed | Method Blank | BS | % Recovery | True Value QC | RPD | Qualifier |
| GRO C6-C10* | <10.0 | 10.0 | 04/23/2025 | ND | 195 | 97.7 | 200 | 1.88 | |
| DRO >C10-C28* | <10.0 | 10.0 | 04/23/2025 | ND | 200 | 100 | 200 | 1.80 | |
| EXT DRO >C28-C36 | <10.0 | 10.0 | 04/23/2025 | ND | | | | | |

Surrogate: 1-Chlorooctane 98.0 % 44.4-145

Surrogate: 1-Chlorooctadecane 93.9 % 40.6-153

Cardinal Laboratories

*=Accredited Analyte

PLEASE NOTE: Liability and Damages. Cardinal's liability and client's exclusive remedy for any claim arising, whether based in contract or tort, shall be limited to the amount paid by client for analyses. All claims, including those for negligence and any other cause whatsoever shall be deemed waived unless made in writing and received by Cardinal within thirty (30) days after completion of the applicable service. In no event shall Cardinal be liable for incidental or consequential damages, including, without limitation, business interruptions, loss of use, or loss of profits incurred by client, its subsidiaries, affiliates or successors arising out of or related to the performance of the services hereunder by Cardinal, regardless of whether such claim is based upon any of the above stated reasons or otherwise. Results relate only to the samples identified above. This report shall not be reproduced except in full with written approval of Cardinal Laboratories.

Celey D. Keene, Lab Director/Quality Manager



PHONE (575) 393-2326 ° 101 E. MARLAND ° HOBBS, NM 88240

Analytical Results For:

TETRA TECH
 CHUCK TERHUNE
 901 WEST WALL STREET , STE 100
 MIDLAND TX, 79701
 Fax To: (432) 682-3946

| | | | |
|-------------------|----------------------|---------------------|----------------|
| Received: | 04/22/2025 | Sampling Date: | 04/21/2025 |
| Reported: | 04/24/2025 | Sampling Type: | Soil |
| Project Name: | MCA - 138 | Sampling Condition: | Cool & Intact |
| Project Number: | 212C - MD - 03836 | Sample Received By: | Tamara Oldaker |
| Project Location: | MAVERICK - LEA CO NM | | |

Sample ID: BH -3 (4.0') (H252402-10)

| BTEx 8021B | | mg/kg | | Analyzed By: JH | | | | | | |
|----------------|--------|-----------------|------------|-----------------|------|------------|---------------|------|-----------|--|
| Analyte | Result | Reporting Limit | Analyzed | Method Blank | BS | % Recovery | True Value QC | RPD | Qualifier | |
| Benzene* | <0.050 | 0.050 | 04/24/2025 | ND | 1.77 | 88.3 | 2.00 | 11.1 | | |
| Toluene* | <0.050 | 0.050 | 04/24/2025 | ND | 1.76 | 87.9 | 2.00 | 11.3 | | |
| Ethylbenzene* | <0.050 | 0.050 | 04/24/2025 | ND | 1.86 | 92.8 | 2.00 | 9.81 | | |
| Total Xylenes* | <0.150 | 0.150 | 04/24/2025 | ND | 5.85 | 97.5 | 6.00 | 10.0 | | |
| Total BTEX | <0.300 | 0.300 | 04/24/2025 | ND | | | | | | |

Surrogate: 4-Bromofluorobenzene (PID) 114 % 71.5-134

| Chloride, SM4500Cl-B | | mg/kg | | Analyzed By: AC | | | | | | |
|----------------------|--------|-----------------|------------|-----------------|-----|------------|---------------|------|-----------|--|
| Analyte | Result | Reporting Limit | Analyzed | Method Blank | BS | % Recovery | True Value QC | RPD | Qualifier | |
| Chloride | 32.0 | 16.0 | 04/23/2025 | ND | 416 | 104 | 400 | 0.00 | | |

| TPH 8015M | | mg/kg | | Analyzed By: MS | | | | | |
|------------------|--------|-----------------|------------|-----------------|-----|------------|---------------|------|-----------|
| Analyte | Result | Reporting Limit | Analyzed | Method Blank | BS | % Recovery | True Value QC | RPD | Qualifier |
| GRO C6-C10* | <10.0 | 10.0 | 04/23/2025 | ND | 195 | 97.7 | 200 | 1.88 | |
| DRO >C10-C28* | <10.0 | 10.0 | 04/23/2025 | ND | 200 | 100 | 200 | 1.80 | |
| EXT DRO >C28-C36 | <10.0 | 10.0 | 04/23/2025 | ND | | | | | |

Surrogate: 1-Chlorooctane 92.1 % 44.4-145

Surrogate: 1-Chlorooctadecane 92.3 % 40.6-153

Cardinal Laboratories

*=Accredited Analyte

PLEASE NOTE: Liability and Damages. Cardinal's liability and client's exclusive remedy for any claim arising, whether based in contract or tort, shall be limited to the amount paid by client for analyses. All claims, including those for negligence and any other cause whatsoever shall be deemed waived unless made in writing and received by Cardinal within thirty (30) days after completion of the applicable service. In no event shall Cardinal be liable for incidental or consequential damages, including, without limitation, business interruptions, loss of use, or loss of profits incurred by client, its subsidiaries, affiliates or successors arising out of or related to the performance of the services hereunder by Cardinal, regardless of whether such claim is based upon any of the above stated reasons or otherwise. Results relate only to the samples identified above. This report shall not be reproduced except in full with written approval of Cardinal Laboratories.

Celey D. Keene, Lab Director/Quality Manager



PHONE (575) 393-2326 ° 101 E. MARLAND ° HOBBS, NM 88240

Analytical Results For:

TETRA TECH
 CHUCK TERHUNE
 901 WEST WALL STREET , STE 100
 MIDLAND TX, 79701
 Fax To: (432) 682-3946

| | | | |
|-------------------|----------------------|---------------------|----------------|
| Received: | 04/22/2025 | Sampling Date: | 04/21/2025 |
| Reported: | 04/24/2025 | Sampling Type: | Soil |
| Project Name: | MCA - 138 | Sampling Condition: | Cool & Intact |
| Project Number: | 212C - MD - 03836 | Sample Received By: | Tamara Oldaker |
| Project Location: | MAVERICK - LEA CO NM | | |

Sample ID: BH -4 (4.0') (H252402-11)

| BTEx 8021B | | mg/kg | | Analyzed By: JH | | | | | |
|----------------|--------|-----------------|------------|-----------------|------|------------|---------------|------|-----------|
| Analyte | Result | Reporting Limit | Analyzed | Method Blank | BS | % Recovery | True Value QC | RPD | Qualifier |
| Benzene* | <0.050 | 0.050 | 04/24/2025 | ND | 1.77 | 88.3 | 2.00 | 11.1 | |
| Toluene* | <0.050 | 0.050 | 04/24/2025 | ND | 1.76 | 87.9 | 2.00 | 11.3 | |
| Ethylbenzene* | <0.050 | 0.050 | 04/24/2025 | ND | 1.86 | 92.8 | 2.00 | 9.81 | |
| Total Xylenes* | <0.150 | 0.150 | 04/24/2025 | ND | 5.85 | 97.5 | 6.00 | 10.0 | |
| Total BTEX | <0.300 | 0.300 | 04/24/2025 | ND | | | | | |

Surrogate: 4-Bromofluorobenzene (PID) 109 % 71.5-134

| Chloride, SM4500Cl-B | | mg/kg | | Analyzed By: AC | | | | | |
|----------------------|--------|-----------------|------------|-----------------|-----|------------|---------------|------|-----------|
| Analyte | Result | Reporting Limit | Analyzed | Method Blank | BS | % Recovery | True Value QC | RPD | Qualifier |
| Chloride | 16.0 | 16.0 | 04/23/2025 | ND | 416 | 104 | 400 | 0.00 | |

| TPH 8015M | | mg/kg | | Analyzed By: MS | | | | | |
|------------------|--------|-----------------|------------|-----------------|-----|------------|---------------|------|-----------|
| Analyte | Result | Reporting Limit | Analyzed | Method Blank | BS | % Recovery | True Value QC | RPD | Qualifier |
| GRO C6-C10* | <10.0 | 10.0 | 04/23/2025 | ND | 195 | 97.7 | 200 | 1.88 | |
| DRO >C10-C28* | <10.0 | 10.0 | 04/23/2025 | ND | 200 | 100 | 200 | 1.80 | |
| EXT DRO >C28-C36 | <10.0 | 10.0 | 04/23/2025 | ND | | | | | |

Surrogate: 1-Chlorooctane 99.5 % 44.4-145

Surrogate: 1-Chlorooctadecane 94.3 % 40.6-153

Cardinal Laboratories

*=Accredited Analyte

PLEASE NOTE: Liability and Damages. Cardinal's liability and client's exclusive remedy for any claim arising, whether based in contract or tort, shall be limited to the amount paid by client for analyses. All claims, including those for negligence and any other cause whatsoever shall be deemed waived unless made in writing and received by Cardinal within thirty (30) days after completion of the applicable service. In no event shall Cardinal be liable for incidental or consequential damages, including, without limitation, business interruptions, loss of use, or loss of profits incurred by client, its subsidiaries, affiliates or successors arising out of or related to the performance of the services hereunder by Cardinal, regardless of whether such claim is based upon any of the above stated reasons or otherwise. Results relate only to the samples identified above. This report shall not be reproduced except in full with written approval of Cardinal Laboratories.

Celey D. Keene, Lab Director/Quality Manager



PHONE (575) 393-2326 ° 101 E. MARLAND ° HOBBS, NM 88240

Analytical Results For:

TETRA TECH
 CHUCK TERHUNE
 901 WEST WALL STREET , STE 100
 MIDLAND TX, 79701
 Fax To: (432) 682-3946

| | | | |
|-------------------|----------------------|---------------------|----------------|
| Received: | 04/22/2025 | Sampling Date: | 04/21/2025 |
| Reported: | 04/24/2025 | Sampling Type: | Soil |
| Project Name: | MCA - 138 | Sampling Condition: | Cool & Intact |
| Project Number: | 212C - MD - 03836 | Sample Received By: | Tamara Oldaker |
| Project Location: | MAVERICK - LEA CO NM | | |

Sample ID: BH -5 (4.0') (H252402-12)

| BTEx 8021B | | mg/kg | | Analyzed By: JH | | | | | | |
|----------------|--------|-----------------|------------|-----------------|------|------------|---------------|------|-----------|--|
| Analyte | Result | Reporting Limit | Analyzed | Method Blank | BS | % Recovery | True Value QC | RPD | Qualifier | |
| Benzene* | <0.050 | 0.050 | 04/24/2025 | ND | 1.77 | 88.3 | 2.00 | 11.1 | | |
| Toluene* | <0.050 | 0.050 | 04/24/2025 | ND | 1.76 | 87.9 | 2.00 | 11.3 | | |
| Ethylbenzene* | <0.050 | 0.050 | 04/24/2025 | ND | 1.86 | 92.8 | 2.00 | 9.81 | | |
| Total Xylenes* | <0.150 | 0.150 | 04/24/2025 | ND | 5.85 | 97.5 | 6.00 | 10.0 | | |
| Total BTEX | <0.300 | 0.300 | 04/24/2025 | ND | | | | | | |

Surrogate: 4-Bromofluorobenzene (PID) 111 % 71.5-134

| Chloride, SM4500Cl-B | | mg/kg | | Analyzed By: AC | | | | | | |
|----------------------|--------|-----------------|------------|-----------------|-----|------------|---------------|------|-----------|--|
| Analyte | Result | Reporting Limit | Analyzed | Method Blank | BS | % Recovery | True Value QC | RPD | Qualifier | |
| Chloride | 32.0 | 16.0 | 04/23/2025 | ND | 416 | 104 | 400 | 0.00 | | |

| TPH 8015M | | mg/kg | | Analyzed By: MS | | | | | |
|------------------|--------|-----------------|------------|-----------------|-----|------------|---------------|------|-----------|
| Analyte | Result | Reporting Limit | Analyzed | Method Blank | BS | % Recovery | True Value QC | RPD | Qualifier |
| GRO C6-C10* | <10.0 | 10.0 | 04/23/2025 | ND | 195 | 97.7 | 200 | 1.88 | |
| DRO >C10-C28* | <10.0 | 10.0 | 04/23/2025 | ND | 200 | 100 | 200 | 1.80 | |
| EXT DRO >C28-C36 | <10.0 | 10.0 | 04/23/2025 | ND | | | | | |

Surrogate: 1-Chlorooctane 99.7 % 44.4-145

Surrogate: 1-Chlorooctadecane 96.1 % 40.6-153

Cardinal Laboratories

*=Accredited Analyte

PLEASE NOTE: Liability and Damages. Cardinal's liability and client's exclusive remedy for any claim arising, whether based in contract or tort, shall be limited to the amount paid by client for analyses. All claims, including those for negligence and any other cause whatsoever shall be deemed waived unless made in writing and received by Cardinal within thirty (30) days after completion of the applicable service. In no event shall Cardinal be liable for incidental or consequential damages, including, without limitation, business interruptions, loss of use, or loss of profits incurred by client, its subsidiaries, affiliates or successors arising out of or related to the performance of the services hereunder by Cardinal, regardless of whether such claim is based upon any of the above stated reasons or otherwise. Results relate only to the samples identified above. This report shall not be reproduced except in full with written approval of Cardinal Laboratories.

Celey D. Keene, Lab Director/Quality Manager



PHONE (575) 393-2326 ° 101 E. MARLAND ° HOBBS, NM 88240

Analytical Results For:

TETRA TECH
 CHUCK TERHUNE
 901 WEST WALL STREET , STE 100
 MIDLAND TX, 79701
 Fax To: (432) 682-3946

| | | | |
|-------------------|----------------------|---------------------|----------------|
| Received: | 04/22/2025 | Sampling Date: | 04/21/2025 |
| Reported: | 04/24/2025 | Sampling Type: | Soil |
| Project Name: | MCA - 138 | Sampling Condition: | Cool & Intact |
| Project Number: | 212C - MD - 03836 | Sample Received By: | Tamara Oldaker |
| Project Location: | MAVERICK - LEA CO NM | | |

Sample ID: BH -6 (4.0') (H252402-13)

| BTEx 8021B | | mg/kg | | Analyzed By: JH | | | | | | |
|----------------|--------|-----------------|------------|-----------------|------|------------|---------------|------|-----------|--|
| Analyte | Result | Reporting Limit | Analyzed | Method Blank | BS | % Recovery | True Value QC | RPD | Qualifier | |
| Benzene* | <0.050 | 0.050 | 04/24/2025 | ND | 1.77 | 88.3 | 2.00 | 11.1 | | |
| Toluene* | <0.050 | 0.050 | 04/24/2025 | ND | 1.76 | 87.9 | 2.00 | 11.3 | | |
| Ethylbenzene* | <0.050 | 0.050 | 04/24/2025 | ND | 1.86 | 92.8 | 2.00 | 9.81 | | |
| Total Xylenes* | <0.150 | 0.150 | 04/24/2025 | ND | 5.85 | 97.5 | 6.00 | 10.0 | | |
| Total BTEX | <0.300 | 0.300 | 04/24/2025 | ND | | | | | | |

Surrogate: 4-Bromofluorobenzene (PID) 104 % 71.5-134

| Chloride, SM4500Cl-B | | mg/kg | | Analyzed By: AC | | | | | |
|----------------------|--------|-----------------|------------|-----------------|-----|------------|---------------|------|-----------|
| Analyte | Result | Reporting Limit | Analyzed | Method Blank | BS | % Recovery | True Value QC | RPD | Qualifier |
| Chloride | 32.0 | 16.0 | 04/23/2025 | ND | 416 | 104 | 400 | 0.00 | |

| TPH 8015M | | mg/kg | | Analyzed By: MS | | | | | |
|------------------|--------|-----------------|------------|-----------------|-----|------------|---------------|------|-----------|
| Analyte | Result | Reporting Limit | Analyzed | Method Blank | BS | % Recovery | True Value QC | RPD | Qualifier |
| GRO C6-C10* | <10.0 | 10.0 | 04/23/2025 | ND | 195 | 97.7 | 200 | 1.88 | |
| DRO >C10-C28* | <10.0 | 10.0 | 04/23/2025 | ND | 200 | 100 | 200 | 1.80 | |
| EXT DRO >C28-C36 | <10.0 | 10.0 | 04/23/2025 | ND | | | | | |

Surrogate: 1-Chlorooctane 98.5 % 44.4-145

Surrogate: 1-Chlorooctadecane 95.5 % 40.6-153

Cardinal Laboratories

*=Accredited Analyte

PLEASE NOTE: Liability and Damages. Cardinal's liability and client's exclusive remedy for any claim arising, whether based in contract or tort, shall be limited to the amount paid by client for analyses. All claims, including those for negligence and any other cause whatsoever shall be deemed waived unless made in writing and received by Cardinal within thirty (30) days after completion of the applicable service. In no event shall Cardinal be liable for incidental or consequential damages, including, without limitation, business interruptions, loss of use, or loss of profits incurred by client, its subsidiaries, affiliates or successors arising out of or related to the performance of the services hereunder by Cardinal, regardless of whether such claim is based upon any of the above stated reasons or otherwise. Results relate only to the samples identified above. This report shall not be reproduced except in full with written approval of Cardinal Laboratories.

Celey D. Keene, Lab Director/Quality Manager



PHONE (575) 393-2326 ° 101 E. MARLAND ° HOBBS, NM 88240

Analytical Results For:

TETRA TECH
 CHUCK TERHUNE
 901 WEST WALL STREET , STE 100
 MIDLAND TX, 79701
 Fax To: (432) 682-3946

| | | | |
|-------------------|----------------------|---------------------|----------------|
| Received: | 04/22/2025 | Sampling Date: | 04/21/2025 |
| Reported: | 04/24/2025 | Sampling Type: | Soil |
| Project Name: | MCA - 138 | Sampling Condition: | Cool & Intact |
| Project Number: | 212C - MD - 03836 | Sample Received By: | Tamara Oldaker |
| Project Location: | MAVERICK - LEA CO NM | | |

Sample ID: BH -7 (4.0') (H252402-14)

| BTEx 8021B | | mg/kg | | Analyzed By: JH | | | | | | |
|----------------|--------|-----------------|------------|-----------------|------|------------|---------------|------|-----------|--|
| Analyte | Result | Reporting Limit | Analyzed | Method Blank | BS | % Recovery | True Value QC | RPD | Qualifier | |
| Benzene* | <0.050 | 0.050 | 04/24/2025 | ND | 1.77 | 88.3 | 2.00 | 11.1 | | |
| Toluene* | <0.050 | 0.050 | 04/24/2025 | ND | 1.76 | 87.9 | 2.00 | 11.3 | | |
| Ethylbenzene* | <0.050 | 0.050 | 04/24/2025 | ND | 1.86 | 92.8 | 2.00 | 9.81 | | |
| Total Xylenes* | <0.150 | 0.150 | 04/24/2025 | ND | 5.85 | 97.5 | 6.00 | 10.0 | | |
| Total BTEX | <0.300 | 0.300 | 04/24/2025 | ND | | | | | | |

Surrogate: 4-Bromofluorobenzene (PID) 115 % 71.5-134

| Chloride, SM4500Cl-B | | mg/kg | | Analyzed By: AC | | | | | |
|----------------------|--------|-----------------|------------|-----------------|-----|------------|---------------|------|-----------|
| Analyte | Result | Reporting Limit | Analyzed | Method Blank | BS | % Recovery | True Value QC | RPD | Qualifier |
| Chloride | 16.0 | 16.0 | 04/23/2025 | ND | 416 | 104 | 400 | 0.00 | |

| TPH 8015M | | mg/kg | | Analyzed By: MS | | | | | |
|------------------|--------|-----------------|------------|-----------------|-----|------------|---------------|------|-----------|
| Analyte | Result | Reporting Limit | Analyzed | Method Blank | BS | % Recovery | True Value QC | RPD | Qualifier |
| GRO C6-C10* | <10.0 | 10.0 | 04/23/2025 | ND | 195 | 97.7 | 200 | 1.88 | |
| DRO >C10-C28* | <10.0 | 10.0 | 04/23/2025 | ND | 200 | 100 | 200 | 1.80 | |
| EXT DRO >C28-C36 | <10.0 | 10.0 | 04/23/2025 | ND | | | | | |

Surrogate: 1-Chlorooctane 94.3 % 44.4-145

Surrogate: 1-Chlorooctadecane 93.9 % 40.6-153

Cardinal Laboratories

*=Accredited Analyte

PLEASE NOTE: Liability and Damages. Cardinal's liability and client's exclusive remedy for any claim arising, whether based in contract or tort, shall be limited to the amount paid by client for analyses. All claims, including those for negligence and any other cause whatsoever shall be deemed waived unless made in writing and received by Cardinal within thirty (30) days after completion of the applicable service. In no event shall Cardinal be liable for incidental or consequential damages, including, without limitation, business interruptions, loss of use, or loss of profits incurred by client, its subsidiaries, affiliates or successors arising out of or related to the performance of the services hereunder by Cardinal, regardless of whether such claim is based upon any of the above stated reasons or otherwise. Results relate only to the samples identified above. This report shall not be reproduced except in full with written approval of Cardinal Laboratories.

Celey D. Keene, Lab Director/Quality Manager



PHONE (575) 393-2326 ° 101 E. MARLAND ° HOBBS, NM 88240

Analytical Results For:

TETRA TECH
 CHUCK TERHUNE
 901 WEST WALL STREET , STE 100
 MIDLAND TX, 79701
 Fax To: (432) 682-3946

| | | | |
|-------------------|----------------------|---------------------|----------------|
| Received: | 04/22/2025 | Sampling Date: | 04/21/2025 |
| Reported: | 04/24/2025 | Sampling Type: | Soil |
| Project Name: | MCA - 138 | Sampling Condition: | Cool & Intact |
| Project Number: | 212C - MD - 03836 | Sample Received By: | Tamara Oldaker |
| Project Location: | MAVERICK - LEA CO NM | | |

Sample ID: BH -8 (4.0') (H252402-15)

| BTEx 8021B | | mg/kg | | Analyzed By: JH | | | | | | |
|----------------|--------|-----------------|------------|-----------------|------|------------|---------------|------|-----------|--|
| Analyte | Result | Reporting Limit | Analyzed | Method Blank | BS | % Recovery | True Value QC | RPD | Qualifier | |
| Benzene* | <0.050 | 0.050 | 04/24/2025 | ND | 1.77 | 88.3 | 2.00 | 11.1 | | |
| Toluene* | <0.050 | 0.050 | 04/24/2025 | ND | 1.76 | 87.9 | 2.00 | 11.3 | | |
| Ethylbenzene* | <0.050 | 0.050 | 04/24/2025 | ND | 1.86 | 92.8 | 2.00 | 9.81 | | |
| Total Xylenes* | <0.150 | 0.150 | 04/24/2025 | ND | 5.85 | 97.5 | 6.00 | 10.0 | | |
| Total BTEX | <0.300 | 0.300 | 04/24/2025 | ND | | | | | | |

Surrogate: 4-Bromofluorobenzene (PID) 112 % 71.5-134

| Chloride, SM4500Cl-B | | mg/kg | | Analyzed By: AC | | | | | | |
|----------------------|--------|-----------------|------------|-----------------|-----|------------|---------------|------|-----------|--|
| Analyte | Result | Reporting Limit | Analyzed | Method Blank | BS | % Recovery | True Value QC | RPD | Qualifier | |
| Chloride | <16.0 | 16.0 | 04/23/2025 | ND | 416 | 104 | 400 | 0.00 | | |

| TPH 8015M | | mg/kg | | Analyzed By: MS | | | | | |
|------------------|--------|-----------------|------------|-----------------|-----|------------|---------------|------|-----------|
| Analyte | Result | Reporting Limit | Analyzed | Method Blank | BS | % Recovery | True Value QC | RPD | Qualifier |
| GRO C6-C10* | <10.0 | 10.0 | 04/23/2025 | ND | 195 | 97.7 | 200 | 1.88 | |
| DRO >C10-C28* | <10.0 | 10.0 | 04/23/2025 | ND | 200 | 100 | 200 | 1.80 | |
| EXT DRO >C28-C36 | <10.0 | 10.0 | 04/23/2025 | ND | | | | | |

Surrogate: 1-Chlorooctane 94.9 % 44.4-145

Surrogate: 1-Chlorooctadecane 90.9 % 40.6-153

Cardinal Laboratories

*=Accredited Analyte

PLEASE NOTE: Liability and Damages. Cardinal's liability and client's exclusive remedy for any claim arising, whether based in contract or tort, shall be limited to the amount paid by client for analyses. All claims, including those for negligence and any other cause whatsoever shall be deemed waived unless made in writing and received by Cardinal within thirty (30) days after completion of the applicable service. In no event shall Cardinal be liable for incidental or consequential damages, including, without limitation, business interruptions, loss of use, or loss of profits incurred by client, its subsidiaries, affiliates or successors arising out of or related to the performance of the services hereunder by Cardinal, regardless of whether such claim is based upon any of the above stated reasons or otherwise. Results relate only to the samples identified above. This report shall not be reproduced except in full with written approval of Cardinal Laboratories.

Celey D. Keene, Lab Director/Quality Manager



PHONE (575) 393-2326 ° 101 E. MARLAND ° HOBBS, NM 88240

Analytical Results For:

TETRA TECH
 CHUCK TERHUNE
 901 WEST WALL STREET , STE 100
 MIDLAND TX, 79701
 Fax To: (432) 682-3946

Received: 04/22/2025
 Reported: 04/24/2025
 Project Name: MCA - 138
 Project Number: 212C - MD - 03836
 Project Location: MAVERICK - LEA CO NM

Sampling Date: 04/21/2025
 Sampling Type: Soil
 Sampling Condition: Cool & Intact
 Sample Received By: Tamara Oldaker

Sample ID: BH -9 (4.0') (H252402-16)

| BTEx 8021B | | mg/kg | | Analyzed By: JH | | | | | | |
|----------------|--------|-----------------|------------|-----------------|------|------------|---------------|------|-----------|--|
| Analyte | Result | Reporting Limit | Analyzed | Method Blank | BS | % Recovery | True Value QC | RPD | Qualifier | |
| Benzene* | <0.050 | 0.050 | 04/24/2025 | ND | 1.77 | 88.3 | 2.00 | 11.1 | | |
| Toluene* | <0.050 | 0.050 | 04/24/2025 | ND | 1.76 | 87.9 | 2.00 | 11.3 | | |
| Ethylbenzene* | <0.050 | 0.050 | 04/24/2025 | ND | 1.86 | 92.8 | 2.00 | 9.81 | | |
| Total Xylenes* | <0.150 | 0.150 | 04/24/2025 | ND | 5.85 | 97.5 | 6.00 | 10.0 | | |
| Total BTEX | <0.300 | 0.300 | 04/24/2025 | ND | | | | | | |

Surrogate: 4-Bromofluorobenzene (PID) 110 % 71.5-134

| Chloride, SM4500Cl-B | | mg/kg | | Analyzed By: AC | | | | | | |
|----------------------|--------|-----------------|------------|-----------------|-----|------------|---------------|------|-----------|--|
| Analyte | Result | Reporting Limit | Analyzed | Method Blank | BS | % Recovery | True Value QC | RPD | Qualifier | |
| Chloride | <16.0 | 16.0 | 04/23/2025 | ND | 416 | 104 | 400 | 0.00 | | |

| TPH 8015M | | mg/kg | | Analyzed By: MS | | | | | |
|------------------|--------|-----------------|------------|-----------------|-----|------------|---------------|-------|-----------|
| Analyte | Result | Reporting Limit | Analyzed | Method Blank | BS | % Recovery | True Value QC | RPD | Qualifier |
| GRO C6-C10* | <10.0 | 10.0 | 04/23/2025 | ND | 208 | 104 | 200 | 0.539 | |
| DRO >C10-C28* | <10.0 | 10.0 | 04/23/2025 | ND | 205 | 102 | 200 | 0.671 | |
| EXT DRO >C28-C36 | <10.0 | 10.0 | 04/23/2025 | ND | | | | | |

Surrogate: 1-Chlorooctane 104 % 44.4-145

Surrogate: 1-Chlorooctadecane 103 % 40.6-153

Cardinal Laboratories

*=Accredited Analyte

PLEASE NOTE: Liability and Damages. Cardinal's liability and client's exclusive remedy for any claim arising, whether based in contract or tort, shall be limited to the amount paid by client for analyses. All claims, including those for negligence and any other cause whatsoever shall be deemed waived unless made in writing and received by Cardinal within thirty (30) days after completion of the applicable service. In no event shall Cardinal be liable for incidental or consequential damages, including, without limitation, business interruptions, loss of use, or loss of profits incurred by client, its subsidiaries, affiliates or successors arising out of or related to the performance of the services hereunder by Cardinal, regardless of whether such claim is based upon any of the above stated reasons or otherwise. Results relate only to the samples identified above. This report shall not be reproduced except in full with written approval of Cardinal Laboratories.

Celey D. Keene, Lab Director/Quality Manager



PHONE (575) 393-2326 ° 101 E. MARLAND ° HOBBS, NM 88240

Analytical Results For:

TETRA TECH
 CHUCK TERHUNE
 901 WEST WALL STREET , STE 100
 MIDLAND TX, 79701
 Fax To: (432) 682-3946

| | | | |
|-------------------|----------------------|---------------------|----------------|
| Received: | 04/22/2025 | Sampling Date: | 04/21/2025 |
| Reported: | 04/24/2025 | Sampling Type: | Soil |
| Project Name: | MCA - 138 | Sampling Condition: | Cool & Intact |
| Project Number: | 212C - MD - 03836 | Sample Received By: | Tamara Oldaker |
| Project Location: | MAVERICK - LEA CO NM | | |

Sample ID: BH -10 (4.0') (H252402-17)

| BTEx 8021B | | mg/kg | | Analyzed By: JH | | | | | | |
|----------------|--------|-----------------|------------|-----------------|------|------------|---------------|------|-----------|--|
| Analyte | Result | Reporting Limit | Analyzed | Method Blank | BS | % Recovery | True Value QC | RPD | Qualifier | |
| Benzene* | <0.050 | 0.050 | 04/24/2025 | ND | 1.77 | 88.3 | 2.00 | 11.1 | | |
| Toluene* | <0.050 | 0.050 | 04/24/2025 | ND | 1.76 | 87.9 | 2.00 | 11.3 | | |
| Ethylbenzene* | <0.050 | 0.050 | 04/24/2025 | ND | 1.86 | 92.8 | 2.00 | 9.81 | | |
| Total Xylenes* | <0.150 | 0.150 | 04/24/2025 | ND | 5.85 | 97.5 | 6.00 | 10.0 | | |
| Total BTEX | <0.300 | 0.300 | 04/24/2025 | ND | | | | | | |

Surrogate: 4-Bromofluorobenzene (PID) 109 % 71.5-134

| Chloride, SM4500Cl-B | | mg/kg | | Analyzed By: AC | | | | | | |
|----------------------|--------|-----------------|------------|-----------------|-----|------------|---------------|------|-----------|--|
| Analyte | Result | Reporting Limit | Analyzed | Method Blank | BS | % Recovery | True Value QC | RPD | Qualifier | |
| Chloride | <16.0 | 16.0 | 04/23/2025 | ND | 416 | 104 | 400 | 0.00 | | |

| TPH 8015M | | mg/kg | | Analyzed By: MS | | | | | |
|------------------|--------|-----------------|------------|-----------------|-----|------------|---------------|-------|-----------|
| Analyte | Result | Reporting Limit | Analyzed | Method Blank | BS | % Recovery | True Value QC | RPD | Qualifier |
| GRO C6-C10* | <10.0 | 10.0 | 04/23/2025 | ND | 208 | 104 | 200 | 0.539 | |
| DRO >C10-C28* | <10.0 | 10.0 | 04/23/2025 | ND | 205 | 102 | 200 | 0.671 | |
| EXT DRO >C28-C36 | <10.0 | 10.0 | 04/23/2025 | ND | | | | | |

Surrogate: 1-Chlorooctane 88.2 % 44.4-145

Surrogate: 1-Chlorooctadecane 85.8 % 40.6-153

Cardinal Laboratories

*=Accredited Analyte

PLEASE NOTE: Liability and Damages. Cardinal's liability and client's exclusive remedy for any claim arising, whether based in contract or tort, shall be limited to the amount paid by client for analyses. All claims, including those for negligence and any other cause whatsoever shall be deemed waived unless made in writing and received by Cardinal within thirty (30) days after completion of the applicable service. In no event shall Cardinal be liable for incidental or consequential damages, including, without limitation, business interruptions, loss of use, or loss of profits incurred by client, its subsidiaries, affiliates or successors arising out of or related to the performance of the services hereunder by Cardinal, regardless of whether such claim is based upon any of the above stated reasons or otherwise. Results relate only to the samples identified above. This report shall not be reproduced except in full with written approval of Cardinal Laboratories.

Celey D. Keene, Lab Director/Quality Manager

PHONE (575) 393-2326 • 101 E. MARLAND • HOBBS, NM 88240

Notes and Definitions

| | |
|-------|---|
| QR-03 | The RPD value for the sample duplicate or MS/MSD was outside of QC acceptance limits due to matrix interference. QC batch accepted based on LCS and/or LCSD recovery and/or RPD values. |
| QM-07 | The spike recovery was outside acceptance limits for the MS and/or MSD. The batch was accepted based on acceptable LCS recovery. |
| ND | Analyte NOT DETECTED at or above the reporting limit |
| RPD | Relative Percent Difference |
| ** | Samples not received at proper temperature of 6°C or below. |
| *** | Insufficient time to reach temperature. |
| - | Chloride by SM4500Cl-B does not require samples be received at or below 6°C Samples reported on an as received basis (wet) unless otherwise noted on report |

Cardinal Laboratories

*=Accredited Analyte

PLEASE NOTE: Liability and Damages. Cardinal's liability and client's exclusive remedy for any claim arising, whether based in contract or tort, shall be limited to the amount paid by client for analyses. All claims, including those for negligence and any other cause whatsoever shall be deemed waived unless made in writing and received by Cardinal within thirty (30) days after completion of the applicable service. In no event shall Cardinal be liable for incidental or consequential damages, including, without limitation, business interruptions, loss of use, or loss of profits incurred by client, its subsidiaries, affiliates or successors arising out of or related to the performance of the services hereunder by Cardinal, regardless of whether such claim is based upon any of the above stated reasons or otherwise. Results relate only to the samples identified above. This report shall not be reproduced except in full with written approval of Cardinal Laboratories.

A handwritten signature in black ink, appearing to read "Celey D. Keene".

Celey D. Keene, Lab Director/Quality Manager

Tetra Tech, Inc.

901 W Wall Street, Ste 100
Midland, Texas 79701
Tel (432) 682-4559
Fax (432) 682-3946



Client Name:

Maverick Natural Resources

Site Manager:

Chuck Terhune

Project Name:

MCA 138

281-755-8965

Project Location:

Lea County, NM

Project #:

chuck.terhune@tetratech.com

Invoice to:

Attn: Chuck Terhune

Receiving Laboratory:

Cardinal Labs

Sampler Signature:

Jorge Fernandez

Comments:

Include : Chris Straub Chris.Straub@tetratech.com Jorge.Fernandez@tetratech.com

SAMPLE IDENTIFICATION

LAB #
LAB USE ONLY

| YEAR 2024 | DATE | TIME | SAMPLING | | | MATRIX | | | PRESERVATIVE METHOD | # CONTAINERS | FILTERED (Y/N) |
|-----------|------|------|----------|------|-----|------------------|-----|--|---------------------|--------------|----------------|
| | | | WATER | SOIL | HCL | HNO ₃ | ICE | | | | |

| | | | | | | | | | | | |
|----|-------------|-----------|------|---|--|--|--|---|--|--|--|
| 1 | SW-1 | 4/21/2025 | 1500 | X | | | | X | | | |
| 2 | SW-2 | 4/21/2025 | 1505 | X | | | | X | | | |
| 3 | SW-3 | 4/21/2025 | 1510 | X | | | | X | | | |
| 4 | SW-4 | 4/21/2025 | 1515 | X | | | | X | | | |
| 5 | SW-5 | 4/21/2025 | 1520 | X | | | | X | | | |
| 6 | SW-6 | 4/21/2025 | 1525 | X | | | | X | | | |
| 7 | SW-7 | 4/21/2025 | 1530 | X | | | | X | | | |
| 8 | BH-1 (4.0') | 4/21/2025 | 1535 | X | | | | X | | | |
| 9 | BH-2 (4.0') | 4/21/2025 | 1540 | X | | | | X | | | |
| 10 | BH-3 (4.0') | 4/21/2025 | 1545 | X | | | | X | | | |

Inquired by: Jorge Estrada Date: 4-21-25 Time: 1800
Received by: Jorge Estrada Date: 4-22-25 Time: 1353

Date: Time:

Received by:

Date: Time:

Received by:

Date: Time:

ANALYSIS REQUEST

(Circle or Specify Method No.)

| | |
|---|------------|
| BTEX 8021B | BTEX 8260B |
| TPH TX1005 (Ext to C35) | |
| TPH 8015M (GRO - DRO - ORO - MRO) | |
| PAH 8270C | |
| Total Metals Ag As Ba Cd Cr Pb Se Hg | |
| TCLP Metals Ag As Ba Cd Cr Pb Se Hg | |
| TCLP Volatiles | |
| TCLP Semi Volatiles | |
| RCI | |
| GC/MS Vol. 8260B / 624 | |
| GC/MS Semi. Vol. 8270C/625 | |
| PCB's 8082 / 608 | |
| NORM | |
| PLM (Asbestos) | |
| Chloride | |
| Chloride Sulfate TDS | |
| General Water Chemistry (see attached list) | |
| Anion/Cation Balance | |

Hold

LAB USE ONLY

REMARKS: Standard TAT

Sample Temperature

1.8°C / 2.1°C

CF+0.3°C

- ☒ RUSH: Same Day 24 hr 48 hr 72 hr
☐ Rush Charges Authorized
☐ Special Report Limits or TRRP Report

(Circle) HAND DELIVERED FEDEX UPS Tracking #:

ORIGINAL COPY

Analysis Request of Chain of Custody Record



Tetra Tech, Inc.

901 W Wall Street, Ste 100
Midland, Texas 79701
Tel (432) 682-4559
Fax (432) 682-3946

Client Name:

Maverick Natural Resources

Site Manager:

Chuck Terhune

Project Name:

MCA 138

281-755-8965

Project Location:

Lea County, NM

Project #:

212C-MD-03836

Invoice to:

Attn: Chuck Terhune

Receiving Laboratory:

Cardinal Labs

Sampler Signature:

Jorge Fernandez

Comments:

Include : Chris Straub Chris.Straub@tetratech.com Jorge.Fernandez@tetratech.com

LAB #
LAB USE ONLY

SAMPLE IDENTIFICATION

| YEAR: 2024 | SAMPLING | | MATRIX | | PRESERVATIVE METHOD | | | | # CONTAINERS | FILTERED (Y/N) |
|------------|----------|------|--------|------|---------------------|------------------|-----|--|--------------|----------------|
| | DATE | TIME | WATER | SOIL | HCL | HNO ₃ | ICE | | | |

| | | | | | | | | | | |
|----|--------------|-----------|-------|---|--|--|---|--|--|--|
| 11 | BH-4 (4.0') | 4/21/2025 | 15 50 | X | | | X | | | |
| 12 | BH-5 (4.0') | 4/21/2025 | 15 55 | X | | | X | | | |
| 13 | BH-6 (4.0') | 4/21/2025 | 16 00 | X | | | X | | | |
| 14 | BH-7 (4.0') | 4/21/2025 | 16 05 | X | | | X | | | |
| 15 | BH-8 (4.0') | 4/21/2025 | 16 10 | X | | | X | | | |
| 16 | BH-9 (4.0') | 4/21/2025 | 16 15 | X | | | X | | | |
| 17 | BH-10 (4.0') | 4/21/2025 | 16 20 | X | | | X | | | |

ANALYSIS REQUEST
(Circle or Specify Method No.)

| | |
|---|------------|
| BTEX 8021B | BTEX 8260B |
| TPH TX1005 (Ext to C35) | |
| TPH 8015M (GRO - DRO - ORO - MRO) | |
| PAH 8270C | |
| Total Metals Ag As Ba Cd Cr Pb Se Hg | |
| TCLP Metals Ag As Ba Cd Cr Pb Se Hg | |
| TCLP Volatiles | |
| TCLP Semi Volatiles | |
| RCI | |
| GC/MS Vol. 8260B / 624 | |
| GC/MS Semi. Vol. 8270C/625 | |
| PCB's 8082 / 608 | |
| NORM | |
| PLM (Asbestos) | |
| Chloride | |
| Chloride Sulfate TDS | |
| General Water Chemistry (see attached list) | |
| Anion/Cation Balance | |

Hold

Inquired by:

Date: Time:

1800

Inquired by:

Date: Time:

1353

Inquired by:

Date: Time:

Received by:

Date: Time:

LAB USE ONLY

REMARKS:

Standard TAT

☒ RUSH: Same Day 24 hr 48 hr 72 hr

☐ Rush Charges Authorized

☐ Special Report Limits or TRRP Report

ORIGINAL COPY

(Circle) HAND DELIVERED FEDEX UPS Tracking #:



PHONE (575) 393-2326 ° 101 E. MARLAND ° HOBBS, NM 88240

June 26, 2025

CHRIS STRAUB

TETRA TECH

901 WEST WALL STREET , STE 100

MIDLAND, TX 79701

RE: MCA - 138

Enclosed are the results of analyses for samples received by the laboratory on 06/20/25 13:26.

Cardinal Laboratories is accredited through Texas NELAP under certificate number TX-C25-00101. Accreditation applies to drinking water, non-potable water and solid and chemical materials. All accredited analytes are denoted by an asterisk (*). For a complete list of accredited analytes and matrices visit the TCEQ website at www.tceq.texas.gov/field/qa/lab_accred_certif.html.

Cardinal Laboratories is accredited through the State of Colorado Department of Public Health and Environment for:

| | |
|------------------|------------------------------|
| Method EPA 552.2 | Haloacetic Acids (HAA-5) |
| Method EPA 524.2 | Total Trihalomethanes (TTHM) |
| Method EPA 524.4 | Regulated VOCs (V1, V2, V3) |

Accreditation applies to public drinking water matrices.

This report meets NELAP requirements and is made up of a cover page, analytical results, and a copy of the original chain-of-custody. If you have any questions concerning this report, please feel free to contact me.

Sincerely,

A handwritten signature in black ink that reads "Coley D. Keene". The signature is written in a cursive, flowing style.

Celey D. Keene

Lab Director/Quality Manager



PHONE (575) 393-2326 ° 101 E. MARLAND ° HOBBS, NM 88240

Analytical Results For:

TETRA TECH
CHRIS STRAUB
901 WEST WALL STREET , STE 100
MIDLAND TX, 79701
Fax To: (432) 682-3946

| | | | |
|-------------------|----------------------|---------------------|----------------|
| Received: | 06/20/2025 | Sampling Date: | 06/20/2025 |
| Reported: | 06/26/2025 | Sampling Type: | Soil |
| Project Name: | MCA - 138 | Sampling Condition: | Cool & Intact |
| Project Number: | NONE GIVEN | Sample Received By: | Tamara Oldaker |
| Project Location: | MAVERICK - LEA CO NM | | |

Sample ID: CS 01 (0-1) (H253707-01)

| BTX 8021B | | mg/kg | | Analyzed By: JH | | | | | |
|----------------|--------|-----------------|------------|-----------------|------|------------|---------------|-------|-----------|
| Analyte | Result | Reporting Limit | Analyzed | Method Blank | BS | % Recovery | True Value QC | RPD | Qualifier |
| Benzene* | <0.050 | 0.050 | 06/24/2025 | ND | 2.05 | 102 | 2.00 | 0.516 | |
| Toluene* | <0.050 | 0.050 | 06/24/2025 | ND | 2.18 | 109 | 2.00 | 0.655 | |
| Ethylbenzene* | <0.050 | 0.050 | 06/24/2025 | ND | 2.25 | 112 | 2.00 | 1.00 | |
| Total Xylenes* | <0.150 | 0.150 | 06/24/2025 | ND | 6.98 | 116 | 6.00 | 1.40 | |
| Total BTX | <0.300 | 0.300 | 06/24/2025 | ND | | | | | |

Surrogate: 4-Bromofluorobenzene (PID) 111 % 71.5-134

| Chloride, SM4500Cl-B | | mg/kg | | Analyzed By: HM | | | | | |
|----------------------|--------|-----------------|------------|-----------------|-----|------------|---------------|------|-----------|
| Analyte | Result | Reporting Limit | Analyzed | Method Blank | BS | % Recovery | True Value QC | RPD | Qualifier |
| Chloride | 16.0 | 16.0 | 06/24/2025 | ND | 432 | 108 | 400 | 0.00 | |

| TPH 8015M | | mg/kg | | Analyzed By: MS | | | | | |
|------------------|--------|-----------------|------------|-----------------|-----|------------|---------------|------|-----------|
| Analyte | Result | Reporting Limit | Analyzed | Method Blank | BS | % Recovery | True Value QC | RPD | Qualifier |
| GRO C6-C10* | <10.0 | 10.0 | 06/23/2025 | ND | 182 | 90.8 | 200 | 14.1 | |
| DRO >C10-C28* | 10.4 | 10.0 | 06/23/2025 | ND | 194 | 96.9 | 200 | 17.4 | |
| EXT DRO >C28-C36 | <10.0 | 10.0 | 06/23/2025 | ND | | | | | |

Surrogate: 1-Chlorooctane 98.5 % 44.4-145

Surrogate: 1-Chlorooctadecane 103 % 40.6-153

Cardinal Laboratories

*=Accredited Analyte

PLEASE NOTE: Liability and Damages. Cardinal's liability and client's exclusive remedy for any claim arising, whether based in contract or tort, shall be limited to the amount paid by client for analyses. All claims, including those for negligence and any other cause whatsoever shall be deemed waived unless made in writing and received by Cardinal within thirty (30) days after completion of the applicable service. In no event shall Cardinal be liable for incidental or consequential damages, including, without limitation, business interruptions, loss of use, or loss of profits incurred by client, its subsidiaries, affiliates or successors arising out of or related to the performance of the services hereunder by Cardinal, regardless of whether such claim is based upon any of the above stated reasons or otherwise. Results relate only to the samples identified above. This report shall not be reproduced except in full with written approval of Cardinal Laboratories.

Celey D. Keene, Lab Director/Quality Manager



PHONE (575) 393-2326 • 101 E. MARLAND • HOBBS, NM 88240

Notes and Definitions

| | |
|-------|--|
| QR-04 | The RPD for the BS/BSD was outside of historical limits. |
| QM-07 | The spike recovery was outside acceptance limits for the MS and/or MSD. The batch was accepted based on acceptable LCS recovery. |
| ND | Analyte NOT DETECTED at or above the reporting limit |
| RPD | Relative Percent Difference |
| ** | Samples not received at proper temperature of 6°C or below. |
| *** | Insufficient time to reach temperature. |
| - | Chloride by SM4500Cl-B does not require samples be received at or below 6°C Samples reported on an as received basis (wet) unless otherwise noted on report |

Cardinal Laboratories

*=Accredited Analyte

PLEASE NOTE: Liability and Damages. Cardinal's liability and client's exclusive remedy for any claim arising, whether based in contract or tort, shall be limited to the amount paid by client for analyses. All claims, including those for negligence and any other cause whatsoever shall be deemed waived unless made in writing and received by Cardinal within thirty (30) days after completion of the applicable service. In no event shall Cardinal be liable for incidental or consequential damages, including, without limitation, business interruptions, loss of use, or loss of profits incurred by client, its subsidiaries, affiliates or successors arising out of or related to the performance of the services hereunder by Cardinal, regardless of whether such claim is based upon any of the above stated reasons or otherwise. Results relate only to the samples identified above. This report shall not be reproduced except in full with written approval of Cardinal Laboratories.

A handwritten signature in black ink, appearing to read "C. D. Keene", written over a horizontal line.

Celey D. Keene, Lab Director/Quality Manager



101 East Marland, Hobbs, NM 88240
(575) 393-2326 FAX (575) 393-2476

CHAIN-OF-CUSTODY AND ANALYSIS REQUEST

BILL TO

ANALYSIS REQUEST

Company Name:

Cardinal

Project Manager:

Chris Straub

Address:

City:

State:

Zip:

Attn:

Company: TT

Phone #:

Fax #:

Project #:

Project Owner:

Project Name:

MCA 138 release

City:

Project Location:

Lea Co. NM

State:

Zip:

Sample Name:

AG

Fax #:

FOR LAB USE ONLY

Lab I.D.

Sample I.D.

H253707

CS 1 (0-1)

(G)RAB OR (C)OMP.

CONTAINERS

GROUNDWATER

WASTEWATER

SOIL

OIL

SLUDGE

OTHER :

ACID/BASE:

ICE / COOL

OTHER :

DATE

TIME

TPH

BTEX

Chloride

PLEASE NOTE: Liability and Damages: Cardinal's liability and client's exclusive remedy for any claim arising whether based in contract or tort, shall be limited to the amount paid by the client for the analyses. All claims including those for negligence and any other cause whatsoever shall be deemed waived unless made in writing and received by Cardinal within 30 days after completion of the applicable service. In no event shall Cardinal be liable for incidental or consequential damages, including without limitation, business interruptions, loss of use, or loss of profits incurred by client, its subsidiaries, affiliates or successors arising out of or related to the performance of services hereunder by Cardinal, regardless of whether such claim is based upon any of the above stated reasons or otherwise.

Relinquished By:

Date:

6/20

Received By:

Relinquished By:

Date:

6/20

Received By:

REMARKS:

Chris Straub at etx

Delivered By: (Circle One)

Observed Temp. °C

28

Corrected Temp. °C

31

Sample Condition

Cool

Intact

Yes

Yes

No

No

Checked By:

(Initials)

Turnaround Time:

Standard

Rush

Bacteria (only)

Cool

Intact

Yes

Yes

No

No

Sample Condition

Observed Temp. °C

Corrected Temp. °C

FORM-000-R-09-02-17-220

† Cardinal cannot accept verbal changes. Please email changes to celey.keene@cardinallabsnm.com

Remediation Report and Closure Request
MCA Unit #138
Incident ID# nAPP2427157652

Maverick Permian LLC
June 27 2025

ATTACHMENT 4 – SEED MIX

NMSLO Seed Mix**Sandy (S)****SANDY (S) SITES SEED MIXTURE:**

| COMMON NAME | VARIETY | APPLICATION RATE (PLS/Acre) | DRILL BOX |
|------------------------|-------------------|--------------------------------|--------------|
| Grasses: | | | |
| Sand bluestem | Elida, VNS, So. | 2.0 | F |
| Little bluestem | Cimarron, Pastura | 3.0 | F |
| Black grama | VNS, Southern | 1.0 | D |
| Sand dropseed | VNS, Southern | 4.0 | S |
| Plains bristlegrass | VNS, Southern | 2.0 | D |
| Forbs: | | | |
| Firewheel (Gaillardia) | VNS, Southern | 1.0 | D |
| Annual Sunflower | VNS, Southern | 1.0 | D |
| Shrubs: | | | |
| Fourwing Saltbush | VNS, Southern | 1.0 | F |
| Total PLS/acre | | 16.0 | |

S = Small seed drill box, D = Standard seed drill box, F = Fluffy seed drill box
VNS = Variety Not Stated, PLS = Pure Live Seed

- Seed mixes should be provided in bags separating seed types into the three categories: small (S), standard (D) and fluffy (F).
- VNS, Southern – Seed should be from a southern latitude collection of this species.
- Double seed application rate for broadcast or hydroseeding.
- If one species is not available, contact the SLO for an approved substitute; alternatively the SLO may require other species proportionately increased.
- Additional information on these seed species can be found on the USDA Plants Database website at <http://plants.usda.gov>.



Sante Fe Main Office
Phone: (505) 476-3441

General Information
Phone: (505) 629-6116

Online Phone Directory
<https://www.emnrd.nm.gov/ocd/contact-us>

State of New Mexico
Energy, Minerals and Natural Resources
Oil Conservation Division
1220 S. St Francis Dr.
Santa Fe, NM 87505

QUESTIONS

Action 479702

QUESTIONS

| | |
|--|--|
| Operator: Maverick Permian LLC 1000 Main Street, Suite 2900 Houston, TX 77002 | OGRID: 331199 |
| | Action Number: 479702 |
| | Action Type: [C-141] Reclamation Report C-141 (C-141-v-Reclamation) |

QUESTIONS

| | |
|------------------|--|
| Prerequisites | |
| Incident ID (n#) | nAPP2427157652 |
| Incident Name | NAPP2427157652 MCA UNIT #138 FLOWLINE RELEASE @ 30-025-24067 |
| Incident Type | Produced Water Release |
| Incident Status | Reclamation Report Received |
| Incident Well | [30-025-24067] W A RAMSAY NCT B #006 |

| | |
|--|--------------------------------|
| Location of Release Source | |
| Please answer all the questions in this group. | |
| Site Name | MCA UNIT #138 FLOWLINE RELEASE |
| Date Release Discovered | 09/26/2024 |
| Surface Owner | Federal |

| | |
|--|------------------------|
| Incident Details | |
| Please answer all the questions in this group. | |
| Incident Type | Produced Water Release |
| Did this release result in a fire or is the result of a fire | No |
| Did this release result in any injuries | No |
| Has this release reached or does it have a reasonable probability of reaching a watercourse | No |
| Has this release endangered or does it have a reasonable probability of endangering public health | No |
| Has this release substantially damaged or will it substantially damage property or the environment | No |
| Is this release of a volume that is or may with reasonable probability be detrimental to fresh water | No |

| | |
|--|--|
| Nature and Volume of Release | |
| Material(s) released, please answer all that apply below. Any calculations or specific justifications for the volumes provided should be attached to the follow-up C-141 submission. | |
| Crude Oil Released (bbls) Details | Cause: Corrosion Flow Line - Production Crude Oil Released: 3 BBL Recovered: 0 BBL Lost: 3 BBL. |
| Produced Water Released (bbls) Details | Cause: Corrosion Flow Line - Production Produced Water Released: 15 BBL Recovered: 0 BBL Lost: 15 BBL. |
| Is the concentration of chloride in the produced water >10,000 mg/l | Yes |
| Condensate Released (bbls) Details | Not answered. |
| Natural Gas Vented (Mcf) Details | Not answered. |
| Natural Gas Flared (Mcf) Details | Not answered. |
| Other Released Details | Not answered. |
| Are there additional details for the questions above (i.e. any answer containing Other, Specify, Unknown, and/or Fire, or any negative lost amounts) | on September 26, 2024, Maverick operations identified a release of approximately 3 bbls of oil and 15 bbls of produced water into the pasture resulting from flowline corrosion. |

Sante Fe Main Office
Phone: (505) 476-3441

General Information
Phone: (505) 629-6116

Online Phone Directory
<https://www.emnrd.nm.gov/ocd/contact-us>

State of New Mexico
Energy, Minerals and Natural Resources
Oil Conservation Division
1220 S. St Francis Dr.
Santa Fe, NM 87505

QUESTIONS, Page 2

Action 479702

QUESTIONS (continued)

| | |
|--|--|
| Operator: Maverick Permian LLC 1000 Main Street, Suite 2900 Houston, TX 77002 | OGRID: 331199 |
| | Action Number: 479702 |
| | Action Type: [C-141] Reclamation Report C-141 (C-141-v-Reclamation) |

QUESTIONS

| Nature and Volume of Release (continued) | |
|--|--|
| Is this a gas only submission (i.e. only significant Mcf values reported) | No, according to supplied volumes this does not appear to be a "gas only" report. |
| Was this a major release as defined by Subsection A of 19.15.29.7 NMAC | No |
| Reasons why this would be considered a submission for a notification of a major release | <i>Unavailable.</i> |
| <i>With the implementation of the 19.15.27 NMAC (05/25/2021), venting and/or flaring of natural gas (i.e. gas only) are to be submitted on the C-129 form.</i> | |

Initial Response

The responsible party must undertake the following actions immediately unless they could create a safety hazard that would result in injury.

| | |
|--|----------------------|
| The source of the release has been stopped | True |
| The impacted area has been secured to protect human health and the environment | True |
| Released materials have been contained via the use of berms or dikes, absorbent pads, or other containment devices | True |
| All free liquids and recoverable materials have been removed and managed appropriately | True |
| If all the actions described above have not been undertaken, explain why | <i>Not answered.</i> |

Per Paragraph (4) of Subsection B of 19.15.29.8 NMAC the responsible party may commence remediation immediately after discovery of a release. If remediation has begun, please prepare and attach a narrative of actions to date in the follow-up C-141 submission. If remedial efforts have been successfully completed or if the release occurred within a lined containment area (see Subparagraph (a) of Paragraph (5) of Subsection A of 19.15.29.11 NMAC), please prepare and attach all information needed for closure evaluation in the follow-up C-141 submission.

I hereby certify that the information given above is true and complete to the best of my knowledge and understand that pursuant to OCD rules and regulations all operators are required to report and/or file certain release notifications and perform corrective actions for releases which may endanger public health or the environment. The acceptance of a C-141 report by the OCD does not relieve the operator of liability should their operations have failed to adequately investigate and remediate contamination that pose a threat to groundwater, surface water, human health or the environment. In addition, OCD acceptance of a C-141 report does not relieve the operator of responsibility for compliance with any other federal, state, or local laws and/or regulations.

| | |
|--|--|
| I hereby agree and sign off to the above statement | Name: Chuck Terhune Title: Program Manager Email: chuck.terhune@tetrattech.com Date: 10/23/2024 |
|--|--|

Sante Fe Main Office
Phone: (505) 476-3441

General Information
Phone: (505) 629-6116

Online Phone Directory
<https://www.emnrd.nm.gov/ocd/contact-us>

State of New Mexico
Energy, Minerals and Natural Resources
Oil Conservation Division
1220 S. St Francis Dr.
Santa Fe, NM 87505

QUESTIONS, Page 3

Action 479702

QUESTIONS (continued)

| | |
|--|--|
| Operator: Maverick Permian LLC 1000 Main Street, Suite 2900 Houston, TX 77002 | OGRID: 331199 |
| | Action Number: 479702 |
| | Action Type: [C-141] Reclamation Report C-141 (C-141-v-Reclamation) |

QUESTIONS

| | |
|--|--------------------------------|
| Site Characterization | |
| <i>Please answer all the questions in this group (only required when seeking remediation plan approval and beyond). This information must be provided to the appropriate district office no later than 90 days after the release discovery date.</i> | |
| What is the shallowest depth to groundwater beneath the area affected by the release in feet below ground surface (ft bgs) | Between 51 and 75 (ft.) |
| What method was used to determine the depth to ground water | NM OSE iWaters Database Search |
| Did this release impact groundwater or surface water | No |
| What is the minimum distance, between the closest lateral extents of the release and the following surface areas: | |
| A continuously flowing watercourse or any other significant watercourse | Between 1 and 5 (mi.) |
| Any lakebed, sinkhole, or playa lake (measured from the ordinary high-water mark) | Between ½ and 1 (mi.) |
| An occupied permanent residence, school, hospital, institution, or church | Between 1 and 5 (mi.) |
| A spring or a private domestic fresh water well used by less than five households for domestic or stock watering purposes | Between 1 and 5 (mi.) |
| Any other fresh water well or spring | Between ½ and 1 (mi.) |
| Incorporated municipal boundaries or a defined municipal fresh water well field | Between 1 and 5 (mi.) |
| A wetland | Between ½ and 1 (mi.) |
| A subsurface mine | Greater than 5 (mi.) |
| An (non-karst) unstable area | Greater than 5 (mi.) |
| Categorize the risk of this well / site being in a karst geology | Low |
| A 100-year floodplain | Greater than 5 (mi.) |
| Did the release impact areas not on an exploration, development, production, or storage site | Yes |

| | |
|---|------------|
| Remediation Plan | |
| <i>Please answer all the questions that apply or are indicated. This information must be provided to the appropriate district office no later than 90 days after the release discovery date.</i> | |
| Requesting a remediation plan approval with this submission | Yes |
| <i>Attach a comprehensive report demonstrating the lateral and vertical extents of soil contamination associated with the release have been determined, pursuant to 19.15.29.11 NMAC and 19.15.29.13 NMAC.</i> | |
| Have the lateral and vertical extents of contamination been fully delineated | Yes |
| Was this release entirely contained within a lined containment area | No |
| Soil Contamination Sampling: (Provide the highest observable value for each, in milligrams per kilograms.) | |
| Chloride (EPA 300.0 or SM4500 Cl B) | 32 |
| TPH (GRO+DRO+MRO) (EPA SW-846 Method 8015M) | 10.4 |
| GRO+DRO (EPA SW-846 Method 8015M) | 10.4 |
| BTEX (EPA SW-846 Method 8021B or 8260B) | 0 |
| Benzene (EPA SW-846 Method 8021B or 8260B) | 0 |
| <i>Per Subsection B of 19.15.29.11 NMAC unless the site characterization report includes completed efforts at remediation, the report must include a proposed remediation plan in accordance with 19.15.29.12 NMAC, which includes the anticipated timelines for beginning and completing the remediation.</i> | |
| On what estimated date will the remediation commence | 04/16/2025 |
| On what date will (or did) the final sampling or liner inspection occur | 04/21/2025 |
| On what date will (or was) the remediation complete(d) | 05/01/2025 |
| What is the estimated surface area (in square feet) that will be reclaimed | 1975 |
| What is the estimated volume (in cubic yards) that will be reclaimed | 293 |
| What is the estimated surface area (in square feet) that will be remediated | 0 |
| What is the estimated volume (in cubic yards) that will be remediated | 0 |
| <i>These estimated dates and measurements are recognized to be the best guess or calculation at the time of submission and may (be) change(d) over time as more remediation efforts are completed.</i> | |
| <i>The OCD recognizes that proposed remediation measures may have to be minimally adjusted in accordance with the physical realities encountered during remediation. If the responsible party has any need to significantly deviate from the remediation plan proposed, then it should consult with the division to determine if another remediation plan submission is required.</i> | |

Sante Fe Main Office
Phone: (505) 476-3441

General Information
Phone: (505) 629-6116

Online Phone Directory
<https://www.emnrd.nm.gov/ocd/contact-us>

State of New Mexico
Energy, Minerals and Natural Resources
Oil Conservation Division
1220 S. St Francis Dr.
Santa Fe, NM 87505

QUESTIONS, Page 4

Action 479702

QUESTIONS (continued)

| | |
|--|--|
| Operator: Maverick Permian LLC 1000 Main Street, Suite 2900 Houston, TX 77002 | OGRID: 331199 |
| | Action Number: 479702 |
| | Action Type: [C-141] Reclamation Report C-141 (C-141-v-Reclamation) |

QUESTIONS

| | |
|--|--|
| Remediation Plan (continued) | |
| <i>Please answer all the questions that apply or are indicated. This information must be provided to the appropriate district office no later than 90 days after the release discovery date.</i> | |
| This remediation will (or is expected to) utilize the following processes to remediate / reduce contaminants: | |
| <i>(Select all answers below that apply.)</i> | |
| (Ex Situ) Excavation and off-site disposal (i.e. dig and haul, hydrovac, etc.) | Yes |
| Which OCD approved facility will be used for off-site disposal | HALFWAY DISPOSAL AND LANDFILL [FEEM0112334510] |
| OR which OCD approved well (API) will be used for off-site disposal | Not answered. |
| OR is the off-site disposal site, to be used, out-of-state | Not answered. |
| OR is the off-site disposal site, to be used, an NMED facility | Not answered. |
| (Ex Situ) Excavation and on-site remediation (i.e. On-Site Land Farms) | Not answered. |
| (In Situ) Soil Vapor Extraction | Not answered. |
| (In Situ) Chemical processing (i.e. Soil Shredding, Potassium Permanganate, etc.) | Not answered. |
| (In Situ) Biological processing (i.e. Microbes / Fertilizer, etc.) | Not answered. |
| (In Situ) Physical processing (i.e. Soil Washing, Gypsum, Disking, etc.) | Not answered. |
| Ground Water Abatement pursuant to 19.15.30 NMAC | Not answered. |
| OTHER (Non-listed remedial process) | Not answered. |
| <i>Per Subsection B of 19.15.29.11 NMAC unless the site characterization report includes completed efforts at remediation, the report must include a proposed remediation plan in accordance with 19.15.29.12 NMAC, which includes the anticipated timelines for beginning and completing the remediation.</i> | |
| I hereby certify that the information given above is true and complete to the best of my knowledge and understand that pursuant to OCD rules and regulations all operators are required to report and/or file certain release notifications and perform corrective actions for releases which may endanger public health or the environment. The acceptance of a C-141 report by the OCD does not relieve the operator of liability should their operations have failed to adequately investigate and remediate contamination that pose a threat to groundwater, surface water, human health or the environment. In addition, OCD acceptance of a C-141 report does not relieve the operator of responsibility for compliance with any other federal, state, or local laws and/or regulations. | |
| I hereby agree and sign off to the above statement | Name: Chuck Terhune Title: Program Manager Email: chuck.terhune@tetrattech.com Date: 06/27/2025 |
| <i>The OCD recognizes that proposed remediation measures may have to be minimally adjusted in accordance with the physical realities encountered during remediation. If the responsible party has any need to significantly deviate from the remediation plan proposed, then it should consult with the division to determine if another remediation plan submission is required.</i> | |

Sante Fe Main Office
Phone: (505) 476-3441

General Information
Phone: (505) 629-6116

Online Phone Directory
<https://www.emnrd.nm.gov/ocd/contact-us>

State of New Mexico
Energy, Minerals and Natural Resources
Oil Conservation Division
1220 S. St Francis Dr.
Santa Fe, NM 87505

QUESTIONS, Page 5

Action 479702

QUESTIONS (continued)

| | |
|--|--|
| Operator: Maverick Permian LLC 1000 Main Street, Suite 2900 Houston, TX 77002 | OGRID: 331199 |
| | Action Number: 479702 |
| | Action Type: [C-141] Reclamation Report C-141 (C-141-v-Reclamation) |

QUESTIONS

| | |
|--|----|
| Deferral Requests Only | |
| Only answer the questions in this group if seeking a deferral upon approval this submission. Each of the following items must be confirmed as part of any request for deferral of remediation. | |
| Requesting a deferral of the remediation closure due date with the approval of this submission | No |

Sante Fe Main Office
Phone: (505) 476-3441

General Information
Phone: (505) 629-6116

Online Phone Directory
<https://www.emnrd.nm.gov/ocd/contact-us>

State of New Mexico
Energy, Minerals and Natural Resources
Oil Conservation Division
1220 S. St Francis Dr.
Santa Fe, NM 87505

QUESTIONS, Page 6

Action 479702

QUESTIONS (continued)

| | |
|--|--|
| Operator: Maverick Permian LLC 1000 Main Street, Suite 2900 Houston, TX 77002 | OGRID: 331199 |
| | Action Number: 479702 |
| | Action Type: [C-141] Reclamation Report C-141 (C-141-v-Reclamation) |

QUESTIONS

| Sampling Event Information | |
|---|------------|
| Last sampling notification (C-141N) recorded | 476662 |
| Sampling date pursuant to Subparagraph (a) of Paragraph (1) of Subsection D of 19.15.29.12 NMAC | 06/20/2025 |
| What was the (estimated) number of samples that were to be gathered | 1 |
| What was the sampling surface area in square feet | 1970 |

| Remediation Closure Request | |
|--|--|
| <i>Only answer the questions in this group if seeking remediation closure for this release because all remediation steps have been completed.</i> | |
| Requesting a remediation closure approval with this submission | Yes |
| Have the lateral and vertical extents of contamination been fully delineated | Yes |
| Was this release entirely contained within a lined containment area | No |
| All areas reasonably needed for production or subsequent drilling operations have been stabilized, returned to the sites existing grade, and have a soil cover that prevents ponding of water, minimizing dust and erosion | Yes |
| What was the total surface area (in square feet) remediated | 0 |
| What was the total volume (cubic yards) remediated | 0 |
| All areas not reasonably needed for production or subsequent drilling operations have been reclaimed to contain a minimum of four feet of non-waste contain earthen material with concentrations less than 600 mg/kg chlorides, 100 mg/kg TPH, 50 mg/kg BTEX, and 10 mg/kg Benzene | Yes |
| What was the total surface area (in square feet) reclaimed | 1975 |
| What was the total volume (in cubic yards) reclaimed | 293 |
| Summarize any additional remediation activities not included by answers (above) | Impacted material excavated and disposed off site, backfilled with clean material, and reseeded. |
| <i>The responsible party must attach information demonstrating they have complied with all applicable closure requirements and any conditions or directives of the OCD. This demonstration should be in the form of a comprehensive report (in .pdf format) including a scaled site map, sampling diagrams, relevant field notes, photographs of any excavation prior to backfilling, laboratory data including chain of custody documents of final sampling, and a narrative of the remedial activities. Refer to 19.15.29.12 NMAC.</i> | |
| I hereby certify that the information given above is true and complete to the best of my knowledge and understand that pursuant to OCD rules and regulations all operators are required to report and/or file certain release notifications and perform corrective actions for releases which may endanger public health or the environment. The acceptance of a C-141 report by the OCD does not relieve the operator of liability should their operations have failed to adequately investigate and remediate contamination that pose a threat to groundwater, surface water, human health or the environment. In addition, OCD acceptance of a C-141 report does not relieve the operator of responsibility for compliance with any other federal, state, or local laws and/or regulations. The responsible party acknowledges they must substantially restore, reclaim, and re-vegetate the impacted surface area to the conditions that existed prior to the release or their final land use in accordance with 19.15.29.13 NMAC including notification to the OCD when reclamation and re-vegetation are complete. | |
| I hereby agree and sign off to the above statement | Name: Chuck Terhune Title: Program Manager Email: chuck.terhune@tetrattech.com Date: 06/27/2025 |

Sante Fe Main Office
Phone: (505) 476-3441

General Information
Phone: (505) 629-6116

Online Phone Directory
<https://www.emnrd.nm.gov/ocd/contact-us>

State of New Mexico
Energy, Minerals and Natural Resources
Oil Conservation Division
1220 S. St Francis Dr.
Santa Fe, NM 87505

QUESTIONS, Page 7

Action 479702

QUESTIONS (continued)

| | |
|--|--|
| Operator: Maverick Permian LLC 1000 Main Street, Suite 2900 Houston, TX 77002 | OGRID: 331199 |
| | Action Number: 479702 |
| | Action Type: [C-141] Reclamation Report C-141 (C-141-v-Reclamation) |

QUESTIONS

| | |
|--|--|
| Reclamation Report | |
| <i>Only answer the questions in this group if all reclamation steps have been completed.</i> | |
| Requesting a reclamation approval with this submission | Yes |
| What was the total reclamation surface area (in square feet) for this site | 1975 |
| What was the total volume of replacement material (in cubic yards) for this site | 293 |
| <i>Per Paragraph (1) of Subsection D of 19.15.29.13 NMAC the reclamation must contain a minimum of four feet of non-waste containing, uncontaminated, earthen material with chloride concentrations less than 600 mg/kg as analyzed by EPA Method 300.0, or other test methods approved by the division. The soil cover must include a top layer, which is either the background thickness of topsoil or one foot of suitable material to establish vegetation at the site, whichever is greater.</i> | |
| Is the soil top layer complete and is it suitable material to establish vegetation | Yes |
| On what (estimated) date will (or was) the reseeded commence(d) | 05/01/2025 |
| Summarize any additional reclamation activities not included by answers (above) | none |
| <i>The responsible party must attach information demonstrating they have complied with all applicable reclamation requirements and any conditions or directives of the OCD. This demonstration should be in the form of attachments (in .pdf format) including a scaled site map, any proposed reseeded plans or relevant field notes, photographs of reclaimed area, and a narrative of the reclamation activities. Refer to 19.15.29.13 NMAC.</i> | |
| I hereby certify that the information given above is true and complete to the best of my knowledge and understand that pursuant to OCD rules and regulations all operators are required to report and/or file certain release notifications and perform corrective actions for releases which may endanger public health or the environment. The acceptance of a C-141 report by the OCD does not relieve the operator of liability should their operations have failed to adequately investigate and remediate contamination that pose a threat to groundwater, surface water, human health or the environment. In addition, OCD acceptance of a C-141 report does not relieve the operator of responsibility for compliance with any other federal, state, or local laws and/or regulations. The responsible party acknowledges they must substantially restore, reclaim, and re-vegetate the impacted surface area to the conditions that existed prior to the release or their final land use in accordance with 19.15.29.13 NMAC including notification to the OCD when reclamation and re-vegetation are complete. | |
| I hereby agree and sign off to the above statement | Name: Chuck Terhune Title: Program Manager Email: chuck.terhune@tetrattech.com Date: 06/27/2025 |

Sante Fe Main Office
Phone: (505) 476-3441

General Information
Phone: (505) 629-6116

Online Phone Directory
<https://www.emnrd.nm.gov/ocd/contact-us>

State of New Mexico
Energy, Minerals and Natural Resources
Oil Conservation Division
1220 S. St Francis Dr.
Santa Fe, NM 87505

QUESTIONS, Page 8

Action 479702

QUESTIONS (continued)

| | |
|--|--|
| Operator: Maverick Permian LLC 1000 Main Street, Suite 2900 Houston, TX 77002 | OGRID: 331199 |
| | Action Number: 479702 |
| | Action Type: [C-141] Reclamation Report C-141 (C-141-v-Reclamation) |

QUESTIONS

| | |
|---|----|
| Revegetation Report | |
| <i>Only answer the questions in this group if all surface restoration, reclamation and re-vegetation obligations have been satisfied.</i> | |
| Requesting a restoration complete approval with this submission | No |
| <i>Per Paragraph (4) of Subsection (D) of 19.15.29.13 NMAC for any major or minor release containing liquids, the responsible party must notify the division when reclamation and re-vegetation are complete.</i> | |

Sante Fe Main Office
Phone: (505) 476-3441

General Information
Phone: (505) 629-6116

Online Phone Directory
<https://www.emnrd.nm.gov/ocd/contact-us>

State of New Mexico
Energy, Minerals and Natural Resources
Oil Conservation Division
1220 S. St Francis Dr.
Santa Fe, NM 87505

CONDITIONS

Action 479702

CONDITIONS

| | |
|--|--|
| Operator: Maverick Permian LLC 1000 Main Street, Suite 2900 Houston, TX 77002 | OGRID: 331199 |
| | Action Number: 479702 |
| | Action Type: [C-141] Reclamation Report C-141 (C-141-v-Reclamation) |

CONDITIONS

| | | |
|------------|-----------|----------------|
| Created By | Condition | Condition Date |
| nvez | None | 8/5/2025 |