



July 23, 2025

District Supervisor
Oil Conservation Division, District 1
1625 North French Drive
Hobbs, New Mexico 88240

**Re: Release Characterization and Remediation Work Plan
Mesa 11 CTB
BTA Oil Producers, LLC
Lea County, New Mexico
NMOCD Incident ID: nAPP2508742989
Project Location: 32.065820°, -103.628840°
Facility ID: fAPP2129922652**

Sir or Madam:

Tetra Tech, Inc. (Tetra Tech) was contacted by BTA Oil Producers, LLC (BTA) to assess a release that occurred at the Mesa 11 Central Tank Battery (CTB) [fAPP2129922652]. The approximate release site coordinates are 32.065820°, -103.628840°, located in the Public Land Survey System (PLSS) Unit Letter N, Section 01, Township 26 South, Range 32 East, Lea County, New Mexico (Site). The Site location is shown on Figures 1 and 2.

BACKGROUND

According to the State of New Mexico Initial C-141 Form, the release was discovered at the Mesa 11 Central Tank Battery on March 26, 2025. The cause of the release was due to a small water line failure. Approximately 10 bbls of produced water were released, of which 9 bbls were recovered during the initial response. According to photographic documentation, the release was on pad and does not appear to have affected the pasture. The release footprint is approximately 33' x 43' in area and occurred in a congested area. A Notification of Release (NOR) was submitted to the New Mexico Oil Conservation Division (NMOCD) online portal system. Following the NOR submittal the release was assigned the Incident ID nAPP2508742989. The NMOCD initial C-141 Initial Report was duly submitted via the NMOCD online portal system within the required timeframe. A copy of the NMOCD initial C-141 and NOR are included in Appendix A.

LAND OWNERSHIP

According to the NMOCD Oil and Gas Map, the Site is located on Federal Lands managed by the Bureau of Land Management (BLM). The BLM will be notified prior to any remedial activities commencing for this incident.

SITE CHARACTERIZATION

A site characterization was performed and no sinkholes, residences, schools, hospitals, institutions, churches, springs, private domestic water wells, playa lakes, stream bodies, wetlands, incorporated municipal boundaries, subsurface mines, or floodplains are located within the distances specified in 19.15.29 NMAC. The Site is in an area of medium karst potential.

Tetra Tech

901 West Wall St., Suite 100, Midland, TX 79701

Tel 432.682.4559 Fax 432.682.3946 www.tetrattech.com

According to the NMOSE reporting system, there is one water well within ½ mile (800 meters) of the Site. Depth to groundwater at the Site is estimated to be greater than 55 feet below ground surface (bgs) based on well data. The closest groundwater well with depth to groundwater data is New Mexico Office of the State Engineer (NMOSE) well number C-04485, located approximately 0.32 miles (577 meters) southwest of the Site. The well, C-04485, was drilled in October 2020 to a depth of 55 ft bgs and was recorded as dry. The site characterization data are presented in Appendix B.

REGULATORY FRAMEWORK

Based upon the release footprint and in accordance with Subsection E of 19.15.29.12 NMAC, per 19.15.29.11 NMAC, the site characterization data was used to determine recommended remedial action levels (RRALs) for benzene, toluene, ethylbenzene, and xylene (collectively referred to as BTEX), total petroleum hydrocarbons (TPH), and chlorides in soil.

Based on the medium karst geology of the Site, the strictest Table I closure criteria will be applied to this release incident. Thus, based on the site characterization, and in accordance with Table I of 19.15.29.12 NMAC, the RRALs for the Site are as follows:

Constituent	Site RRAL
Chloride	600 mg/kg
TPH (GRO+DRO+ORO)	100 mg/kg
BTEX	50 mg/kg
Benzene	10 mg/kg

SITE ASSESSMENT

On April 3, 2025, BTA personnel were onsite to conduct assessment activities. BTA personnel installed four (4) hand auger borings (H1 through H4) along the perimeter of the release footprint to horizontally delineate the release extent. Four (4) hand auger borings (AH1 through AH4) were also installed to 3 ft bgs within the release footprint to vertically delineate the release extent. In the area of AH4, auger refusal was encountered at a depth of 1-foot bgs.

A total of fourteen (14) soil samples were submitted to Cardinal Laboratories in Hobbs, New Mexico (Cardinal) to be analyzed for chloride via Standard Method 4500Cl-B, TPH via EPA Method 8015M, and BTEX via EPA Method 8021B. A copy of the laboratory analytical reports and chain-of-custody documentation are included in Appendix C. The sampling locations are presented in Figure 3.

Analytical results associated with boring locations AH1, AH3, and AH4 exceeded chloride and/or TPH RRALs. Horizontal delineation was achieved during this mobilization. Vertical delineation was not achieved. All other analytical results were below the Site RRALs for all constituents. As the release extent is located within a congested area of an active facility, extreme caution was used due to the close proximity of the production equipment. Analytical results are presented in Table 1. Photographic documentation of the battery area is presented in Appendix D.

ADDITIONAL ASSESSMENT

Based on the results of the initial assessment, BTA personnel remobilized to the Site on May 7, 2025, for additional assessment. BTA personnel installed one (1) borehole (BH1) within the release extent to complete vertical delineation.

A total of one (1) soil sample was submitted to Cardinal to be analyzed for chloride via Standard Method 4500Cl-B, TPH via EPA Method 8015M, and BTEX via EPA Method 8021B. A copy of the laboratory analytical reports and chain-of-custody documentation are included in Appendix C. Analytical results from the May 2025 assessment activities are summarized in Table 1. Both vertical and horizontal delineation was completed as a result of the additional assessment sampling events. The sampling locations are presented in Figure 3.

REMEDIATION WORK PLAN

Based on the collected analytical results, and review of current Site conditions, BTA proposes to remove the impacted material as indicated on Figure 4. The release footprint in the areas of AH1 and AH3 with soil concentrations above the site RRALS for chloride and/or TPH will be excavated to a maximum depth of 4 feet bgs or until a representative sample from the walls and bottom of the excavation is below the RRALS. Heavy equipment (backhoe and mini-excavator) will be utilized to excavate areas outside the immediate vicinity of pressurized lines or tanks and will come no more than 2 feet from any pressurized lines or active vessels. Areas containing pressurized lines will be addressed with non-mechanical methods (hydro-excavation or hand dig) to a maximum depth of 2 feet bgs or the maximum extent practicable (MEP) and heavy equipment will come no more than 4 ft from any pressurized lines.

If deeper excavation cannot be performed due to infrastructure or safety concerns, any remaining deeper impact will be deferred until facility abandonment. Any excavation or remediation of deep impacted areas located inside the facility would cause a major facility deconstruction, in addition to creating safety risks associated with excavating near production equipment via aggressive excavation methods (i.e., backhoe/track hoe, excavators, hydraulic hammer, etc.). Impacted soils around production equipment, vessels, structures, or lines may not be fully removed during remediation activities due to concerns for onsite personnel and/or the possibility of an additional unwanted release to the environment.

Excavated soils will be transported off-site and disposed of at an NMOCD-approved or permitted facility. Confirmation floor and sidewall samples will be collected every 200 square feet for verification of remedial activities. The proposed excavation encompasses a surface area of approximately 1,170 square feet. The responsible party will notify the NMOCD two (2) business days prior to conducting final confirmation sampling pursuant to 19.15.29.12.D(1)(a) NMAC, using a Notification of Sampling (C-141N) application.

The estimated volume of material to be remediated is approximately 116 cubic yards. Once results are received, the excavation will then be backfilled with clean material to surface grade. One (1) representative 5-point composite sample will be collected from the backfill material to verify that it is comprised of non-waste containing, uncontaminated, earthen material in accordance with 19.15.29.13 NMAC.

RECLAMATION ACTIVITIES

This release is within a facility fully contained on an active pad; therefore, reclamation (reseeding) activities are not applicable for this release. However, any additional remedial and reclamation activities will occur at the time of the facility abandonment or a major facility deconstruction, whichever comes first.

At that time, a complete and accurate reclamation report will be submitted. The reclamation report will address all the requirements of 19.15.29.13 NMAC including: an executive summary of the reclamation activities (and any remaining remediation, as warranted); scaled site map including sampling locations; analytical results including, but not limited to, results showing that any remaining impacts meet the reclamation standards and results to prove the backfill is non-waste containing if the backfill is coming from a rancher's pit or other local source and/or proof from the landfill/landfarm that their backfill is non-waste containing; pictures of the backfilled areas showing that the area is back, as nearly as practical, to the original condition or the final land use and maintain those areas to control dust and minimize erosion to the extent practical; pictures of the top layer, which is either the background thickness of topsoil or one foot of suitable material to establish vegetation at the site, whichever is greater; and a revegetation plan.

Subsequent to the approval of a reclamation plan, a revegetation report will be submitted, including pictures of the revegetated areas, once the site meets the requirements for vegetation cover found in 19.15.29.13(D)(3) NMAC. Per 19.15.29.13(E) NMAC.

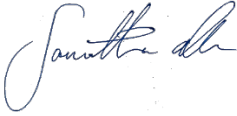
CONCLUSION

BTA proposes to begin remediation activities at the Site within 90 days of plan approval by NMOCD. Upon completion of the proposed work, a final report detailing the remediation activities and the results of the confirmation sampling will be submitted to NMOCD.

In the event the proposed remediation does not remove the entirety of the observed impacts at the Site, a deferral request will be submitted to the NMOCD. If the confirmation sampling results indicate that the impacts have been removed to meet the standards of Table I of 19.15.29.12 NMAC, a closure report will be drafted and submitted to the NMOCD. If you have any questions concerning the assessment activities conducted at the Site or the proposed remedy, please call me at (512) 788-2948.

Sincerely,

Tetra Tech, Inc.



Samantha Allen
Project Manager



Christian Llull, P.G.
Senior Project Manager

cc: Noah Tinker, BTA Oil Producers, LLC

LIST OF ATTACHMENTS

Figures:

- Figure 1 – Overview Map
- Figure 2 – Site Location/Topographic Map
- Figure 3 – Approximate Release Extent and Site Assessment (BTA)
- Figure 4 – Proposed Remediation Extent and Confirmation Sampling Plan

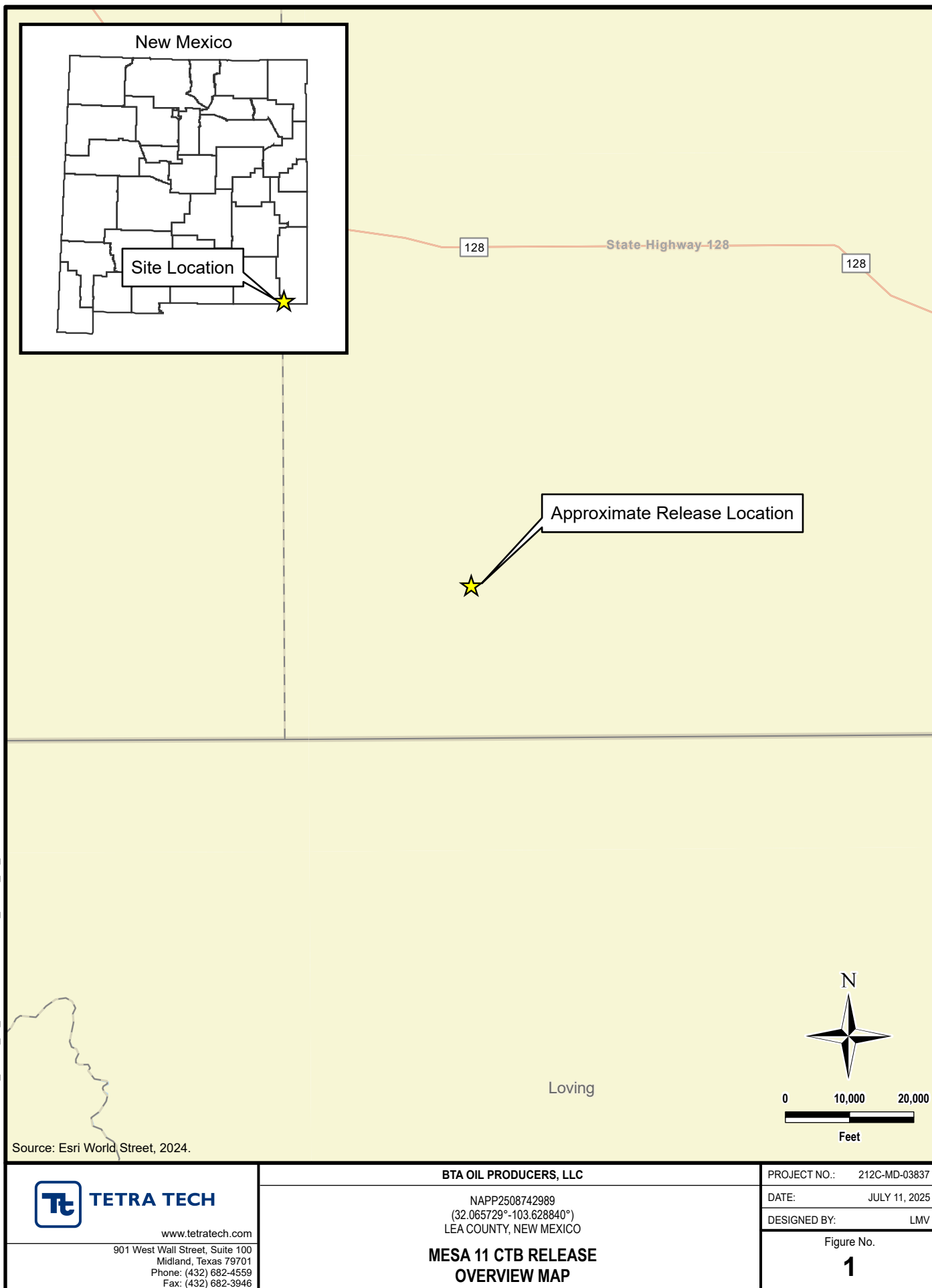
Tables:

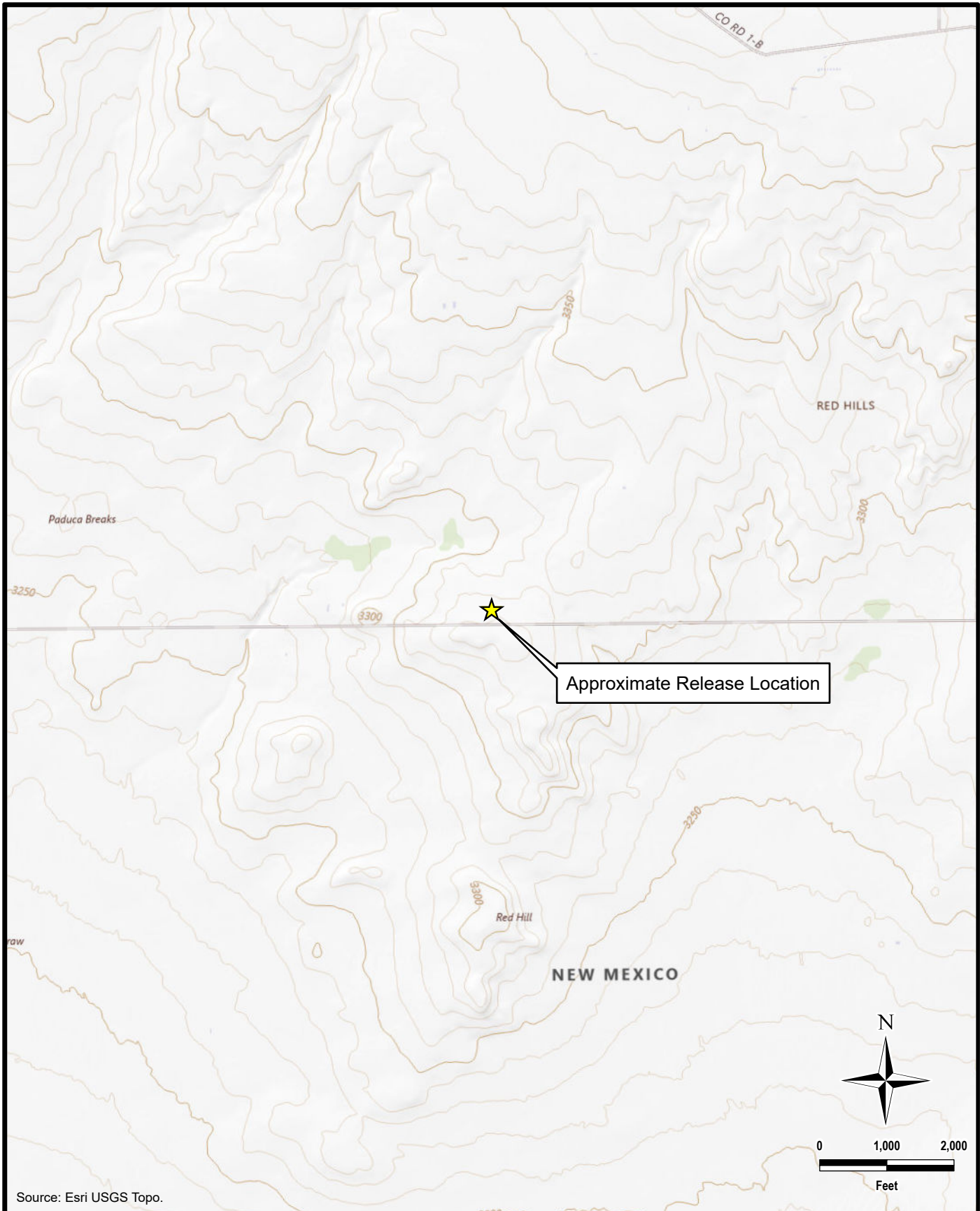
- Table 1 – Summary of Analytical Results – 2025 Soil Assessment

Appendices:


- Appendix A – C-141 Forms
- Appendix B – Site Characterization
- Appendix C – Laboratory Analytical Data
- Appendix D – Photographic Documentation

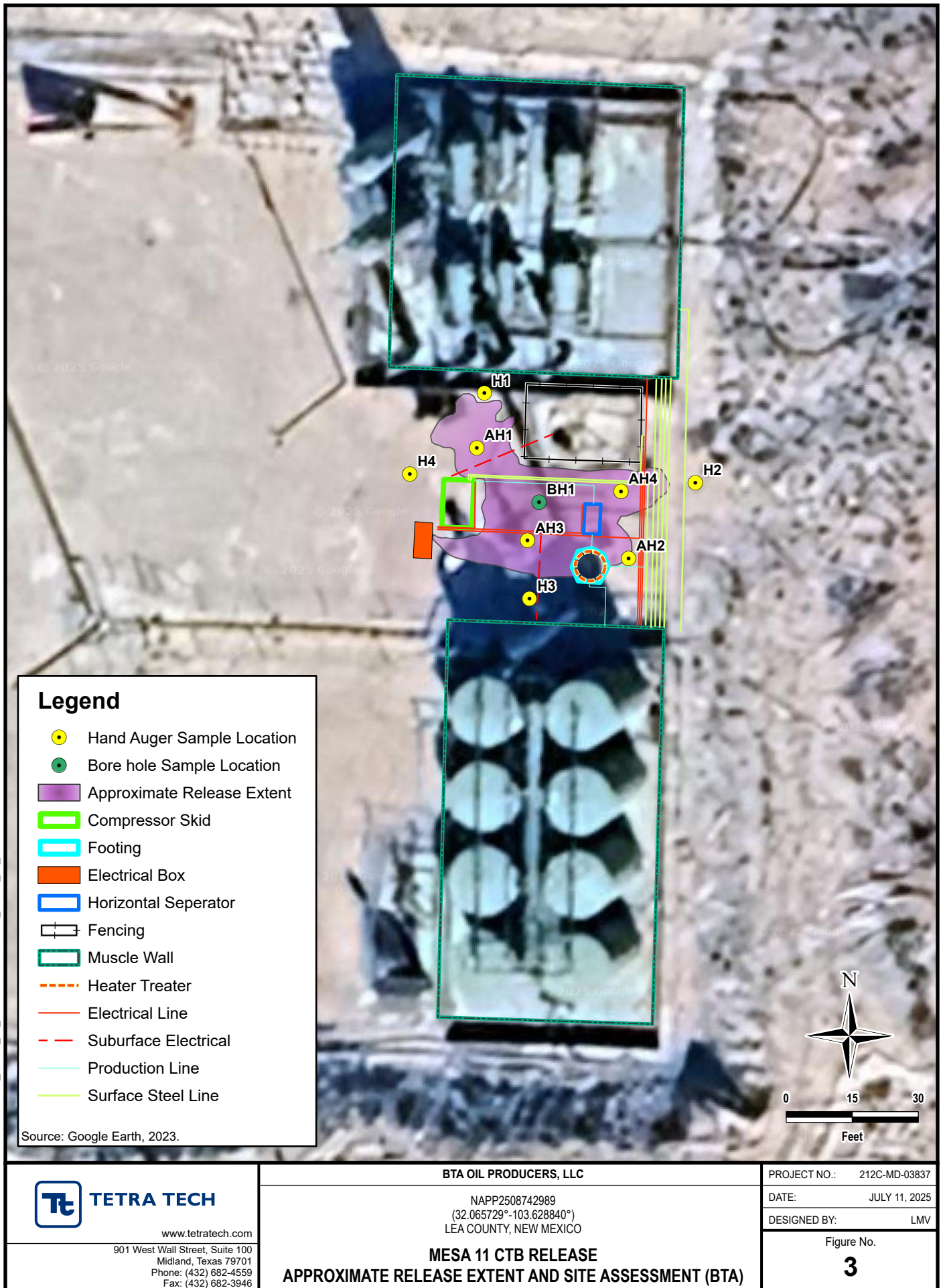
FIGURES

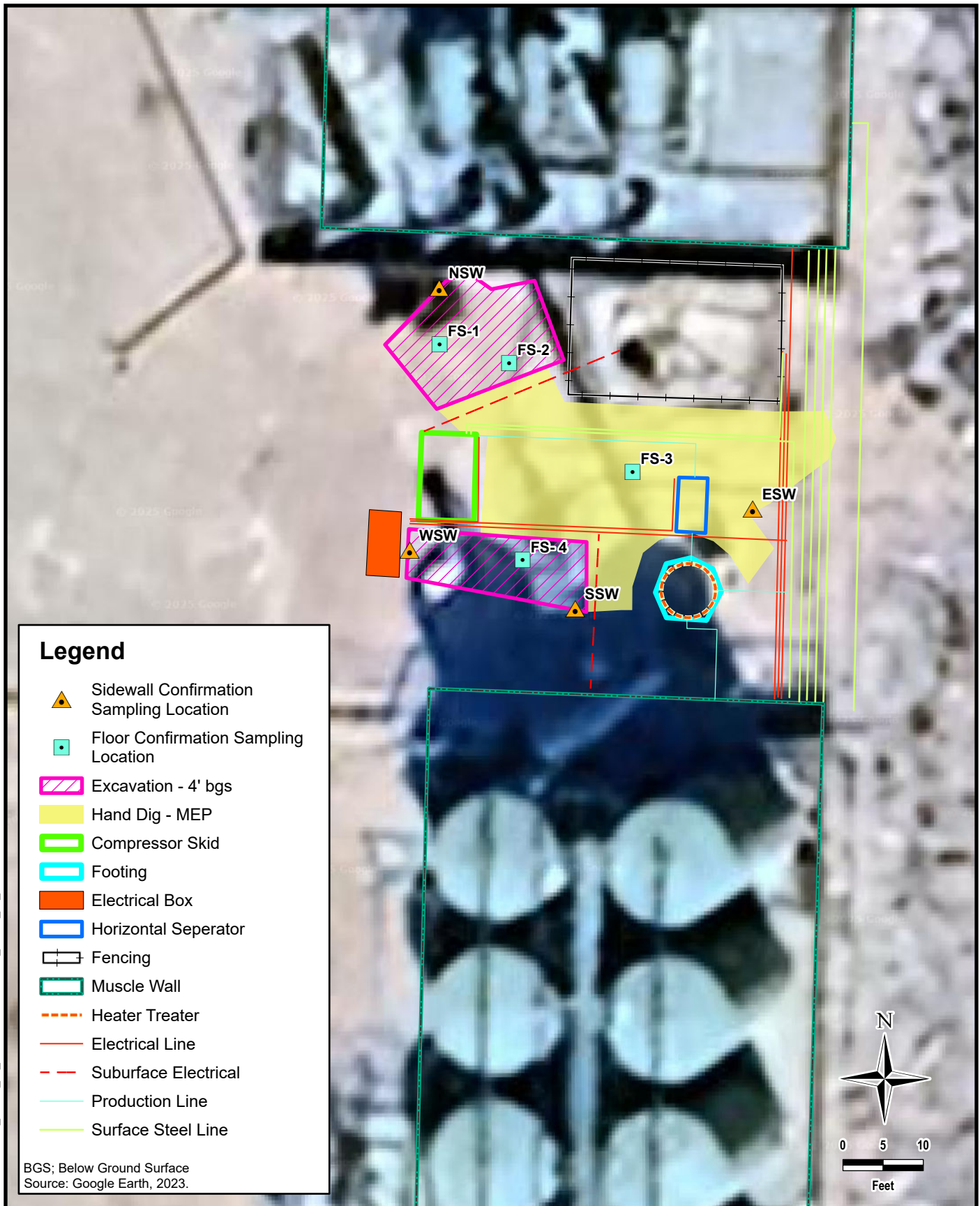




DOCUMENT PATH: Y:\BTA\212C-MD-03837_MESA_11_CTB\APRX

<div>TETRA TECH www.tetrattech.com 901 West Wall Street, Suite 100 Midland, Texas 79701 Phone: (432) 682-4559 Fax: (432) 682-3946</div>	BTA OIL PRODUCERS, LLC NAPP2508742989 (32.065729°-103.628840°) LEA COUNTY, NEW MEXICO	PROJECT NO.: 212C-MD-03837
	MESA 11 CTB RELEASE TOPOGRAPHIC MAP	DATE: JULY 11, 2025
		DESIGNED BY: LMV
		Figure No. 2





DOCUMENT PATH: Y:\BTA\212C-MD-03837_MESA_11_CTB\APRX

**TETRA TECH**

www.tetrattech.com

901 West Wall Street, Suite 100
Midland, Texas 79701
Phone: (432) 682-4559
Fax: (432) 682-3946

BTA OIL PRODUCERS, LLC

NAPP2508742989
(32.065729°-103.628840°)
LEA COUNTY, NEW MEXICO

MESA 11 CTB RELEASE**PROPOSED REMEDIATION EXTENT AND CONFIRMATION SAMPLING PLAN**

PROJECT NO.: 212C-MD-03837

DATE: JULY 16, 2025

DESIGNED BY: LMV

Figure No.

4

APPENDIX A C-141 Forms

TABLE 1
SUMMARY OF ANALYTICAL RESULTS
SOIL ASSESSMENT- nAPP2508742989
BTA OIL PRODUCERS
MESA 11 CTB
LEA COUNTY, NEW MEXICO

Sample ID	Sample Date	Sample Depth	Chloride		BTEX ²										TPH ³							
					Benzene		Toluene		Ethylbenzene		Total Xylenes		Total BTEX		GRO		DRO		EXT DRO		Total TPH (GRO+DRO+EXT DRO)	
															C ₆ - C ₁₂		> C ₁₂ - C ₂₈		> C ₂₈ - C ₃₅			
		ft. bgs	mg/kg	Q	mg/kg	Q	mg/kg	Q	mg/kg	Q	mg/kg	Q	mg/kg	Q	mg/kg	Q	mg/kg	Q	mg/kg	Q	mg/kg	
AH1	4/3/2025	1	4,880		<0.025		0.080		0.081		1.12		1.28		781		7490		1560		9,830	
		2	1,470		<0.025		<0.050		<0.050		<0.150		<0.275		<25.0		<25.0		<25.0		-	
		3	992		<0.025		<0.050		<0.050		<0.150		<0.275		<25.0		<25.0		<25.0		-	
AH2	4/3/2025	1	288		<0.025		<0.050		<0.050		<0.150		<0.275		<25.0		29.6		<25.0		29.6	
		2	192		<0.025		<0.050		<0.050		<0.150		<0.275		<25.0		<25.0		<25.0		-	
		3	192		<0.025		<0.050		<0.050		<0.150		<0.275		<25.0		<25.0		134		134	
AH3	4/3/2025	1	8,400		<0.025		<0.050		<0.050		<0.150		<0.275		<25.0		55.1		49.2		104	
		2	768		<0.025		<0.050		<0.050		<0.150		<0.275		<25.0		<25.0		<25.0		-	
		3	640		<0.025		<0.050		<0.050		<0.150		<0.275		<25.0		<25.0		<25.0		-	
AH4	4/3/2025	1	304		<0.025		<0.050		<0.050		<0.150		<0.275		<25.0		39.2		420		459	
H1	4/3/2025	1	192		<0.025		<0.050		<0.050		<0.150		<0.275		<25.0		<25.0		41.4		41.4	
H2	4/3/2025	1	304		<0.025		<0.050		<0.050		<0.150		<0.275		<25.0		<25.0		<25.0		-	
H3	4/3/2025	1	208		<0.025		<0.050		<0.050		<0.150		<0.275		<25.0		<25.0		<25.0		-	
H4	4/3/2025	1	176		<0.025		<0.050		<0.050		<0.150		<0.275		<25.0		<25.0		<25.0		-	
BH1	5/7/2025	4	176		<0.025		<0.050		<0.050		<0.150		<0.275		<25.0		<25.0		<25.0		-	

NOTES:

ft. Feet

bgs Below ground surface

mg/kg Milligrams per kilogram

TPH Total Petroleum Hydrocarbons

GRO Gasoline range organics

DRO Diesel range organics

1 Method SM4500CI-B

2 Method 8021B

3 Method 8015M

Bold and italicized values indicate exceedance of proposed RRALs and Reclamation Requirements.

Shaded rows indicate intervals proposed for excavation.

TABLES

Sante Fe Main Office
Phone: (505) 476-3441

General Information
Phone: (505) 629-6116

Online Phone Directory
<https://www.emnrd.nm.gov/ocd/contact-us>

State of New Mexico
Energy, Minerals and Natural Resources
Oil Conservation Division
1220 S. St Francis Dr.
Santa Fe, NM 87505

QUESTIONS

Action 446633

QUESTIONS

Operator: BTA OIL PRODUCERS, LLC 104 S Pecos Midland, TX 79701	OGRID: 260297
	Action Number: 446633
	Action Type: [NOTIFY] Notification Of Release (NOR)

QUESTIONS

Location of Release Source	
<i>Please answer all the questions in this group.</i>	
Site Name	Mesa 11 CTB
Date Release Discovered	03/26/2025
Surface Owner	Federal

Incident Details	
<i>Please answer all the questions in this group.</i>	
Incident Type	Blow Out
Did this release result in a fire or is the result of a fire	No
Did this release result in any injuries	No
Has this release reached or does it have a reasonable probability of reaching a watercourse	No
Has this release endangered or does it have a reasonable probability of endangering public health	No
Has this release substantially damaged or will it substantially damage property or the environment	No
Is this release of a volume that is or may with reasonable probability be detrimental to fresh water	No

Nature and Volume of Release	
<i>Material(s) released, please answer all that apply below. Any calculations or specific justifications for the volumes provided should be attached to the follow-up C-141 submission.</i>	
Crude Oil Released (bbls) Details	Not answered.
Produced Water Released (bbls) Details	Cause: Corrosion Other (Specify) Produced Water Released: 10 BBL Recovered: 9 BBL Lost: 1 BBL.
Is the concentration of chloride in the produced water >10,000 mg/l	Yes
Condensate Released (bbls) Details	Not answered.
Natural Gas Vented (Mcf) Details	Not answered.
Natural Gas Flared (Mcf) Details	Not answered.
Other Released Details	Not answered.
Are there additional details for the questions above (i.e. any answer containing Other, Specify, Unknown, and/or Fire, or any negative lost amounts)	Not answered.

Sante Fe Main Office
Phone: (505) 476-3441

General Information
Phone: (505) 629-6116

Online Phone Directory
<https://www.emnrd.nm.gov/ocd/contact-us>

State of New Mexico
Energy, Minerals and Natural Resources
Oil Conservation Division
1220 S. St Francis Dr.
Santa Fe, NM 87505

QUESTIONS, Page 2

Action 446633

QUESTIONS (continued)

Operator: BTA OIL PRODUCERS, LLC 104 S Pecos Midland, TX 79701	OGRID: 260297
	Action Number: 446633
	Action Type: [NOTIFY] Notification Of Release (NOR)

QUESTIONS

Nature and Volume of Release (continued)	
Is this a gas only submission (i.e. only significant Mcf values reported)	No, according to supplied volumes this does not appear to be a "gas only" report.
Was this a major release as defined by Subsection A of 19.15.29.7 NMAC	No
Reasons why this would be considered a submission for a notification of a major release	Unavailable.
With the implementation of the 19.15.27 NMAC (05/25/2021), venting and/or flaring of natural gas (i.e. gas only) are to be submitted on the C-129 form.	

Initial Response

The responsible party must undertake the following actions immediately unless they could create a safety hazard that would result in injury.

The source of the release has been stopped	True
The impacted area has been secured to protect human health and the environment	True
Released materials have been contained via the use of berms or dikes, absorbent pads, or other containment devices	True
All free liquids and recoverable materials have been removed and managed appropriately	True
If all the actions described above have not been undertaken, explain why	Not answered.

Per Paragraph 4 of Subsection B of 19.15.29.8 NMAC the responsible party may commence remediation immediately after discovery of a release. If remediation has begun, please prepare and attach a narrative of actions to date in the follow-up C-141 submission. If remedial efforts have been successfully completed or if the release occurred within a lined containment area (see 19.15.29.11(A)(5)(a) NMAC), please prepare and attach all information needed for closure evaluation in the follow-up C-141 submission.

Sante Fe Main Office
Phone: (505) 476-3441

General Information
Phone: (505) 629-6116

Online Phone Directory
<https://www.emnrd.nm.gov/ocd/contact-us>

State of New Mexico
Energy, Minerals and Natural Resources
Oil Conservation Division
1220 S. St Francis Dr.
Santa Fe, NM 87505

ACKNOWLEDGMENTS

Action 446633

ACKNOWLEDGMENTS

Operator: BTA OIL PRODUCERS, LLC 104 S Pecos Midland, TX 79701	OGRID: 260297
	Action Number: 446633
	Action Type: [NOTIFY] Notification Of Release (NOR)

ACKNOWLEDGMENTS

<input checked="" type="checkbox"/>	I acknowledge that I am authorized to submit notification of a release on behalf of my operator.
<input checked="" type="checkbox"/>	I acknowledge that upon submitting this application, I will be creating a new incident file (assigned to my operator) to track the notification(s) and corrective action(s) for a release, pursuant to NMAC 19.15.29.
<input checked="" type="checkbox"/>	I acknowledge that creating a new incident file will require my operator to file subsequent submission(s) of form "C-141, Application for administrative approval of a release notification and corrective action", pursuant to NMAC 19.15.29.
<input checked="" type="checkbox"/>	I hereby certify that the information given above is true and complete to the best of my knowledge and understand that pursuant to OCD rules and regulations all operators are required to report and/or file certain release notifications and perform corrective actions for releases which may endanger public health or the environment.
<input checked="" type="checkbox"/>	I acknowledge the fact that the acceptance of a C-141 report by the OCD does not relieve the operator of liability should their operations have failed to adequately investigate and remediate contamination that pose a threat to groundwater, surface water, human health or the environment.
<input checked="" type="checkbox"/>	I acknowledge the fact that, in addition, OCD acceptance of a C-141 report does not relieve the operator of responsibility for compliance with any other federal, state, or local laws and/or regulations.

Sante Fe Main Office
Phone: (505) 476-3441

General Information
Phone: (505) 629-6116

Online Phone Directory
<https://www.emnrd.nm.gov/ocd/contact-us>

State of New Mexico
Energy, Minerals and Natural Resources
Oil Conservation Division
1220 S. St Francis Dr.
Santa Fe, NM 87505

CONDITIONS

Action 446633

CONDITIONS

Operator: BTA OIL PRODUCERS, LLC 104 S Pecos Midland, TX 79701	OGRID: 260297
	Action Number: 446633
	Action Type: [NOTIFY] Notification Of Release (NOR)

CONDITIONS

Created By	Condition	Condition Date
sallen	When submitting future reports regarding this release, please submit the calculations used or specific justification for the volumes reported on the initial C-141.	3/28/2025

***** LIQUID SPILLS - VOLUME CALCULATIONS *****

Release Location Name: Mesa 9/11 CTB

Date of Release: 3/26/2025

If the leak/spill is associated with production equipment, i.e. - wellhead, stuffing box,

flowline, tank battery, production vessel, transfer pump, or storage tank place an "X" here: ☒

Input Data:

If spill volumes from measurement, i.e. metering, tank volumes, etc. are known enter the volumes here: OIL: 0.0000 BBL WATER: 9.8000 BBL

If "known" spill volumes are given, input data for the following "Area Calculations" is optional. The above will override the calculated volumes.

Total Area Calculations						Standing Liquid Calculations							
Total Surface Area		width	length	wet soil		Standing Liquid Area		width	length	liquid depth		oil (%)	
				depth	oil (%)								
Rectangle Area #1	32.00 ft	X	43.00 ft	X	2.00 in	0.00%	Rectangle Area #1	32.00 ft	X	43.00 ft	X	0.33 in	0.00%
Rectangle Area #2	0.00 ft	X	0.00 ft	X	0.00 in	0.00%	Rectangle Area #2	0.00 ft	X	0.00 ft	X	0.00 in	0.00%
Rectangle Area #3	0.00 ft	X	0.00 ft	X	0.00 in	0.00%	Rectangle Area #3	0.00 ft	X	0.00 ft	X	0.00 in	0.00%
Rectangle Area #4	0.00 ft	X	0.00 ft	X	0.00 in	0.00%	Rectangle Area #4	0.00 ft	X	0.00 ft	X	0.00 in	0.00%
Rectangle Area #5	0.00 ft	X	0.00 ft	X	0.00 in	0.00%	Rectangle Area #5	0.00 ft	X	0.00 ft	X	0.00 in	0.00%
Rectangle Area #6	0.00 ft	X	0.00 ft	X	0.00 in	0.00%	Rectangle Area #6	0.00 ft	X	0.00 ft	X	0.00 in	0.00%
Rectangle Area #7	0.00 ft	X	0.00 ft	X	0.00 in	0.00%	Rectangle Area #7	0.00 ft	X	0.00 ft	X	0.00 in	0.00%
Rectangle Area #8	0.00 ft	X	0.00 ft	X	0.00 in	0.00%	Rectangle Area #8	0.00 ft	X	0.00 ft	X	0.00 in	0.00%

production system leak - DAILY PRODUCTION DATA REQUIRED

Average Daily Production: Oil _____ BBL Water _____ BBL

Did leak occur before the separator?: ☐ YES ☒ N/A (place an "X")

Amount of Free Liquid Recovered: 9 BBL okay

Percentage of Oil in Free Liquid Recovered: 0.00% (percentage)

Liquid holding factor *: 0.08 gal per gal

Use the following when the spill wets the grains of the soil.

* sand = .08 gallon liquid per gallon volume of soil.

* gravelly (caliche) loam = .14 gallon liquid per gallon volume of soil.

* sandy clay loam soil = .14 gallon liquid per gallon volume of soil.

* clay loam = .16 gallon liquid per gallon volume of soil.

Use the following when the liquid completely fills the pore space of the soil:

Occurs when the spill soaked soil is contained by barriers, natural (or not).

* gravelly (caliche) loam = .25 gallon liquid per gallon volume of soil.

* sandy loam = .5 gallon liquid per gallon volume of soil.

Saturated Soil Volume Calculations:

Total Solid/Liquid Volume: 1,376 sq. ft. H2O 229 cu. ft. OIL cu. ft.

Estimated Volumes Spilled

Liquid in Soil:	3.3 BBL	0.0 BBL
Free Liquid:	6.7 BBL	0.0 BBL
Totals:	10.0 BBL	0.0 BBL

Total Spill Liquid: 9.8 BBL 0.0 BBL

Recovered Volumes

Estimated oil recovered:	0.0 BBL	check - okay
Estimated water recovered:	9.2 BBL	check - okay

Free Liquid Volume Calculations:

Total Free Liquid Volume: 1,376 sq. ft. H2O 38 cu. ft. OIL cu. ft.

Estimated Production Volumes Lost

Estimated Production Spilled:	9.8 BBL	0.0 BBL
-------------------------------	---------	---------

Estimated Surface Damage

Surface Area:	1,376 sq. ft.
Surface Area:	.0316 acre

Estimated Weights, and Volumes

Saturated Soil =	25,685 lbs	229 cu. ft.	8 cu. yds.
Total Liquid =	10 BBL	412 gallon	3,425 lbs

Sante Fe Main Office
Phone: (505) 476-3441

General Information
Phone: (505) 629-6116

Online Phone Directory
<https://www.emnrd.nm.gov/ocd/contact-us>

State of New Mexico
Energy, Minerals and Natural Resources
Oil Conservation Division
1220 S. St Francis Dr.
Santa Fe, NM 87505

QUESTIONS

Action 465551

QUESTIONS

Operator: BTA OIL PRODUCERS, LLC 104 S Pecos Midland, TX 79701	OGRID: 260297
	Action Number: 465551
	Action Type: [C-141] Initial C-141 (C-141-v-Initial)

QUESTIONS

Prerequisites	
Incident ID (n#)	nAPP2508742989
Incident Name	NAPP2508742989 MESA 11 CTB @ 0
Incident Type	Blow Out
Incident Status	Initial C-141 Received
Incident Facility	[fAPP2129922652] Mesa 9H 11H

Location of Release Source	
Please answer all the questions in this group.	
Site Name	Mesa 11 CTB
Date Release Discovered	03/26/2025
Surface Owner	Federal

Incident Details	
Please answer all the questions in this group.	
Incident Type	Produced Water Release
Did this release result in a fire or is the result of a fire	No
Did this release result in any injuries	No
Has this release reached or does it have a reasonable probability of reaching a watercourse	No
Has this release endangered or does it have a reasonable probability of endangering public health	No
Has this release substantially damaged or will it substantially damage property or the environment	No
Is this release of a volume that is or may with reasonable probability be detrimental to fresh water	No

Nature and Volume of Release	
Material(s) released, please answer all that apply below. Any calculations or specific justifications for the volumes provided should be attached to the follow-up C-141 submission.	
Crude Oil Released (bbls) Details	Not answered.
Produced Water Released (bbls) Details	Cause: Corrosion Other (Specify) Produced Water Released: 10 BBL Recovered: 9 BBL Lost: 1 BBL.
Is the concentration of chloride in the produced water >10,000 mg/l	Yes
Condensate Released (bbls) Details	Not answered.
Natural Gas Vented (Mcf) Details	Not answered.
Natural Gas Flared (Mcf) Details	Not answered.
Other Released Details	Not answered.
Are there additional details for the questions above (i.e. any answer containing Other, Specify, Unknown, and/or Fire, or any negative lost amounts)	Small water line failure causing release of aprox 10 bbls of PW, aprox 9 bbl recovered

Sante Fe Main Office
Phone: (505) 476-3441

General Information
Phone: (505) 629-6116

Online Phone Directory
<https://www.emnrd.nm.gov/ocd/contact-us>

State of New Mexico
Energy, Minerals and Natural Resources
Oil Conservation Division
1220 S. St Francis Dr.
Santa Fe, NM 87505

QUESTIONS, Page 2

Action 465551

QUESTIONS (continued)

Operator: BTA OIL PRODUCERS, LLC 104 S Pecos Midland, TX 79701	OGRID: 260297
	Action Number: 465551
	Action Type: [C-141] Initial C-141 (C-141-v-Initial)

QUESTIONS

Nature and Volume of Release (continued)	
Is this a gas only submission (i.e. only significant Mcf values reported)	No, according to supplied volumes this does not appear to be a "gas only" report.
Was this a major release as defined by Subsection A of 19.15.29.7 NMAC	No
Reasons why this would be considered a submission for a notification of a major release	<i>Unavailable.</i>
<i>With the implementation of the 19.15.27 NMAC (05/25/2021), venting and/or flaring of natural gas (i.e. gas only) are to be submitted on the C-129 form.</i>	

Initial Response

The responsible party must undertake the following actions immediately unless they could create a safety hazard that would result in injury.

The source of the release has been stopped	True
The impacted area has been secured to protect human health and the environment	True
Released materials have been contained via the use of berms or dikes, absorbent pads, or other containment devices	True
All free liquids and recoverable materials have been removed and managed appropriately	True
If all the actions described above have not been undertaken, explain why	<i>Not answered.</i>

Per Paragraph (4) of Subsection B of 19.15.29.8 NMAC the responsible party may commence remediation immediately after discovery of a release. If remediation has begun, please prepare and attach a narrative of actions to date in the follow-up C-141 submission. If remedial efforts have been successfully completed or if the release occurred within a lined containment area (see Subparagraph (a) of Paragraph (5) of Subsection A of 19.15.29.11 NMAC), please prepare and attach all information needed for closure evaluation in the follow-up C-141 submission.

I hereby certify that the information given above is true and complete to the best of my knowledge and understand that pursuant to OCD rules and regulations all operators are required to report and/or file certain release notifications and perform corrective actions for releases which may endanger public health or the environment. The acceptance of a C-141 report by the OCD does not relieve the operator of liability should their operations have failed to adequately investigate and remediate contamination that pose a threat to groundwater, surface water, human health or the environment. In addition, OCD acceptance of a C-141 report does not relieve the operator of responsibility for compliance with any other federal, state, or local laws and/or regulations.

I hereby agree and sign off to the above statement	Name: Noah Tinker Title: Engineer Email: ntinker@btaoil.com Date: 05/21/2025
--	---

Sante Fe Main Office
Phone: (505) 476-3441

General Information
Phone: (505) 629-6116

Online Phone Directory
<https://www.emnrd.nm.gov/ocd/contact-us>

State of New Mexico
Energy, Minerals and Natural Resources
Oil Conservation Division
1220 S. St Francis Dr.
Santa Fe, NM 87505

QUESTIONS, Page 3

Action 465551

QUESTIONS (continued)

Operator: BTA OIL PRODUCERS, LLC 104 S Pecos Midland, TX 79701	OGRID: 260297
	Action Number: 465551
	Action Type: [C-141] Initial C-141 (C-141-v-Initial)

QUESTIONS

Site Characterization	
<i>Please answer all the questions in this group (only required when seeking remediation plan approval and beyond). This information must be provided to the appropriate district office no later than 90 days after the release discovery date.</i>	
What is the shallowest depth to groundwater beneath the area affected by the release in feet below ground surface (ft bgs)	Not answered.
What method was used to determine the depth to ground water	Not answered.
Did this release impact groundwater or surface water	Not answered.
What is the minimum distance, between the closest lateral extents of the release and the following surface areas:	
A continuously flowing watercourse or any other significant watercourse	Not answered.
Any lakebed, sinkhole, or playa lake (measured from the ordinary high-water mark)	Not answered.
An occupied permanent residence, school, hospital, institution, or church	Not answered.
A spring or a private domestic fresh water well used by less than five households for domestic or stock watering purposes	Not answered.
Any other fresh water well or spring	Not answered.
Incorporated municipal boundaries or a defined municipal fresh water well field	Not answered.
A wetland	Not answered.
A subsurface mine	Not answered.
An (non-karst) unstable area	Not answered.
Categorize the risk of this well / site being in a karst geology	Not answered.
A 100-year floodplain	Not answered.
Did the release impact areas not on an exploration, development, production, or storage site	Not answered.

Remediation Plan	
<i>Please answer all the questions that apply or are indicated. This information must be provided to the appropriate district office no later than 90 days after the release discovery date.</i>	
Requesting a remediation plan approval with this submission	No
<i>The OCD recognizes that proposed remediation measures may have to be minimally adjusted in accordance with the physical realities encountered during remediation. If the responsible party has any need to significantly deviate from the remediation plan proposed, then it should consult with the division to determine if another remediation plan submission is required.</i>	

Sante Fe Main Office
Phone: (505) 476-3441

General Information
Phone: (505) 629-6116

Online Phone Directory
<https://www.emnrd.nm.gov/ocd/contact-us>

State of New Mexico
Energy, Minerals and Natural Resources
Oil Conservation Division
1220 S. St Francis Dr.
Santa Fe, NM 87505

CONDITIONS

Action 465551

CONDITIONS

Operator: BTA OIL PRODUCERS, LLC 104 S Pecos Midland, TX 79701	OGRID: 260297
	Action Number: 465551
	Action Type: [C-141] Initial C-141 (C-141-v-Initial)

CONDITIONS

Created By	Condition	Condition Date
rhamlet	None	5/21/2025

APPENDIX B

Site Characterization Data

OCD Land Ownership



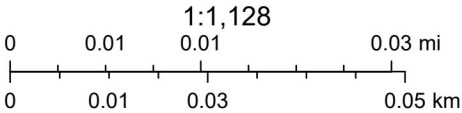
4/10/2025, 1:33:15 PM

Mineral Ownership

A-All minerals are owned by U.S.

Land Ownership

BLM



U.S. BLM, Maxar, Microsoft, Esri, HERE, Garmin, iPC



New Mexico Office of the State Engineer

Water Column/Average Depth to Water

(A CLW##### in the POD suffix indicates the POD has been replaced & no longer serves a water right file.)

(R=POD has been replaced, O=orphaned, C=the file is closed)

(quarters are smallest to largest)

POD Number	Code	Sub basin	County	Q64	Q16	Q4	Sec	Tws	Range	X	Y	Map	(meters)	(In feet)		
													Distance	Well Depth	Depth Water	Water Column
C 04485 POD1		CUB	LE	SE	NW	NW	12	26S	32E	629038.9	3548125.2		579	55		
C 04549 POD1		CUB	LE	NW	NW	NW	11	26S	32E	627111.4	3548316.9		2327	0	0	0
C 04547 POD1		CUB	LE	NE	SE	SE	07	26S	33E	631685.9	3547262.2		2602	112		
C 04537 POD1		C	LE	SE	SE	SE	31	25S	33E	631846.7	3550243.2		2950	500	280	220

Average Depth to Water: **140 feet**

Minimum Depth: **0 feet**

Maximum Depth: **280 feet**

Record Count: 4

Basin/County Search:
County: LE

UTM Filters (in meters):
Easting: 629427.00
Northing: 3548555.00
Radius: 003000

* UTM location was derived from PLSS - see Help

The data is furnished by the NMOSE/ISC and is accepted by the recipient with the expressed understanding that the OSE/ISC make no warranties, expressed or implied, concerning the accuracy, completeness, reliability, usability, or suitability for any particular purpose of the data.



WELL RECORD & LOG

OFFICE OF THE STATE ENGINEER

www.ose.state.nm.us

1. GENERAL AND WELL LOCATION	OSE POD NO. (WELL NO.) C-04485		OWL 362		WELL TAG ID NO. NA		OSE FILE NO(S). C-04485				
	WELL OWNER NAME(S) KJ ENVIRONMENTAL						PHONE (OPTIONAL) 214-287-5875				
	WELL OWNER MAILING ADDRESS 500 MOSSELEY ROAD						CITY CROSS ROADS		STATE TX	ZIP 76227	
	WELL LOCATION (FROM GPS)	DEGREES 3548560		MINUTES 00		SECONDS 00		* ACCURACY REQUIRED: ONE TENTH OF A SECOND * DATUM REQUIRED: WGS 84			
		LATITUDE N		LONGITUDE W							
DESCRIPTION RELATING WELL LOCATION TO STREET ADDRESS AND COMMON LANDMARKS - PLSS (SECTION, TOWNSHIP, RANGE) WHERE AVAILABLE											

2. DRILLING & CASING INFORMATION	LICENSE NO. WD 1186		NAME OF LICENSED DRILLER RODNEY HAMMER				NAME OF WELL DRILLING COMPANY ENVIRO-DRILL, INC.			
	DRILLING STARTED 10/05/2020		DRILLING ENDED 10/06/2020		DEPTH OF COMPLETED WELL (FT) 55'		BORE HOLE DEPTH (FT) 55'		DEPTH WATER FIRST ENCOUNTERED (FT) None (Dry)	
	COMPLETED WELL IS: <input type="checkbox"/> ARTESIAN <input checked="" type="checkbox"/> DRY HOLE <input type="checkbox"/> SHALLOW (UNCONFINED)								STATIC WATER LEVEL IN COMPLETED WELL (FT)	
	DRILLING FLUID: <input type="checkbox"/> AIR <input type="checkbox"/> MUD <input type="checkbox"/> ADDITIVES - SPECIFY:									
	DRILLING METHOD: <input checked="" type="checkbox"/> ROTARY <input type="checkbox"/> HAMMER <input type="checkbox"/> CABLE TOOL <input checked="" type="checkbox"/> OTHER - SPECIFY: HSA									
	DEPTH (feet bgl)		BORE HOLE DIAM (inches)	CASING MATERIAL AND/OR GRADE (include each casing string, and note sections of screen)	CASING CONNECTION TYPE (add coupling diameter)	CASING INSIDE DIAM. (inches)	CASING WALL THICKNESS (inches)	SLOT SIZE (inches)		
	FROM	TO								
55	45	8"	Screen	FJT	2"	2"	.010			
45	0	8"	Blank	11	11	11				

3. ANNULAR MATERIAL	DEPTH (feet bgl)		BORE HOLE DIAM. (inches)	LIST ANNULAR SEAL MATERIAL AND GRAVEL PACK SIZE-RANGE BY INTERVAL	AMOUNT (cubic feet)	METHOD OF PLACEMENT
	FROM	TO				
	55	43	8"	Sand 10/20	10	tremie
	43	41	8"	Hole Plug	1	↓
	41	0	8"	Grout	100 gal.	↓

FOR OSE INTERNAL USE

FILE NO.	CC-2599	POD NO.	TRN NO.	WR-20 WELL RECORD & LOG (Version 06/30/17)
LOCATION	2-2-4	2N-33E-10	WELL TAG ID NO.	693367
				PAGE 1 OF 2

WR-20 WELL RECORD & LOG (Version 06/30/17)

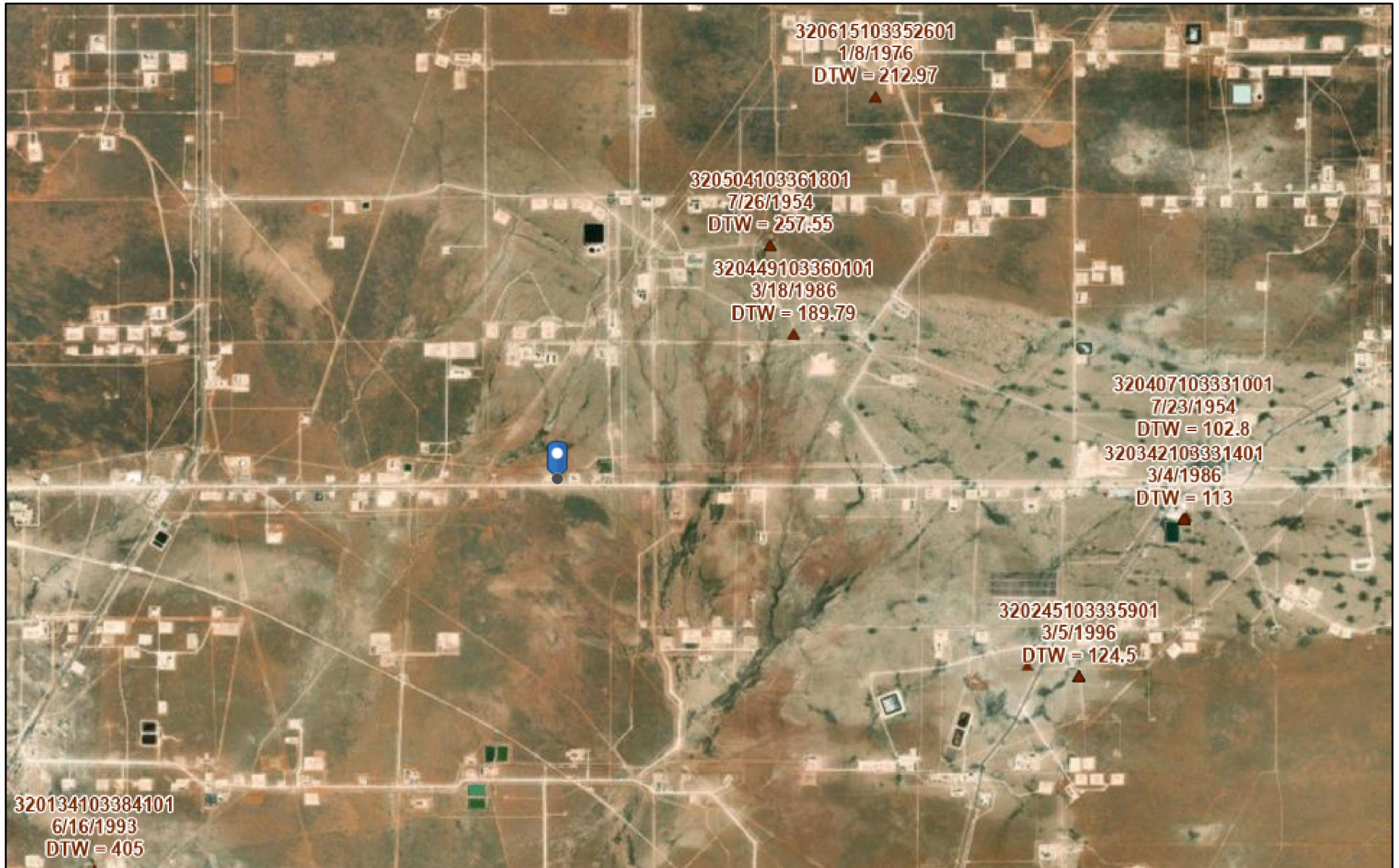
TRN NO. 693361

WELL TAG ID NO.

PAGE 1 OF 2

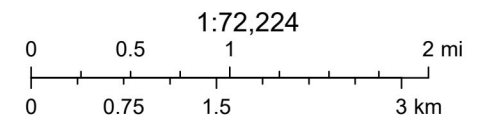
Released to Imaging: 8/6/2025 10:11:59 AM

USGS Groundwater Wells



4/10/2025, 1:47:59 PM

▲ USGS Historical GW Wells



Esri, HERE, Garmin, Earthstar Geographics, USGS

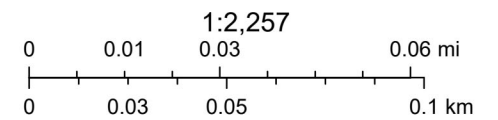
OCD Karst Potential



4/10/2025, 1:41:46 PM

Karst Occurrence Potential

Medium



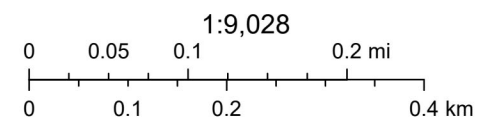
BLM, OCD, New Mexico Tech, Maxar, Microsoft, Esri, HERE, Garmin, IPC

OCD Water Bodys



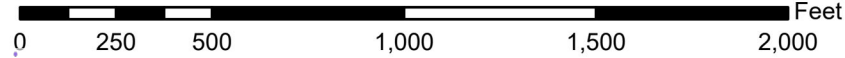
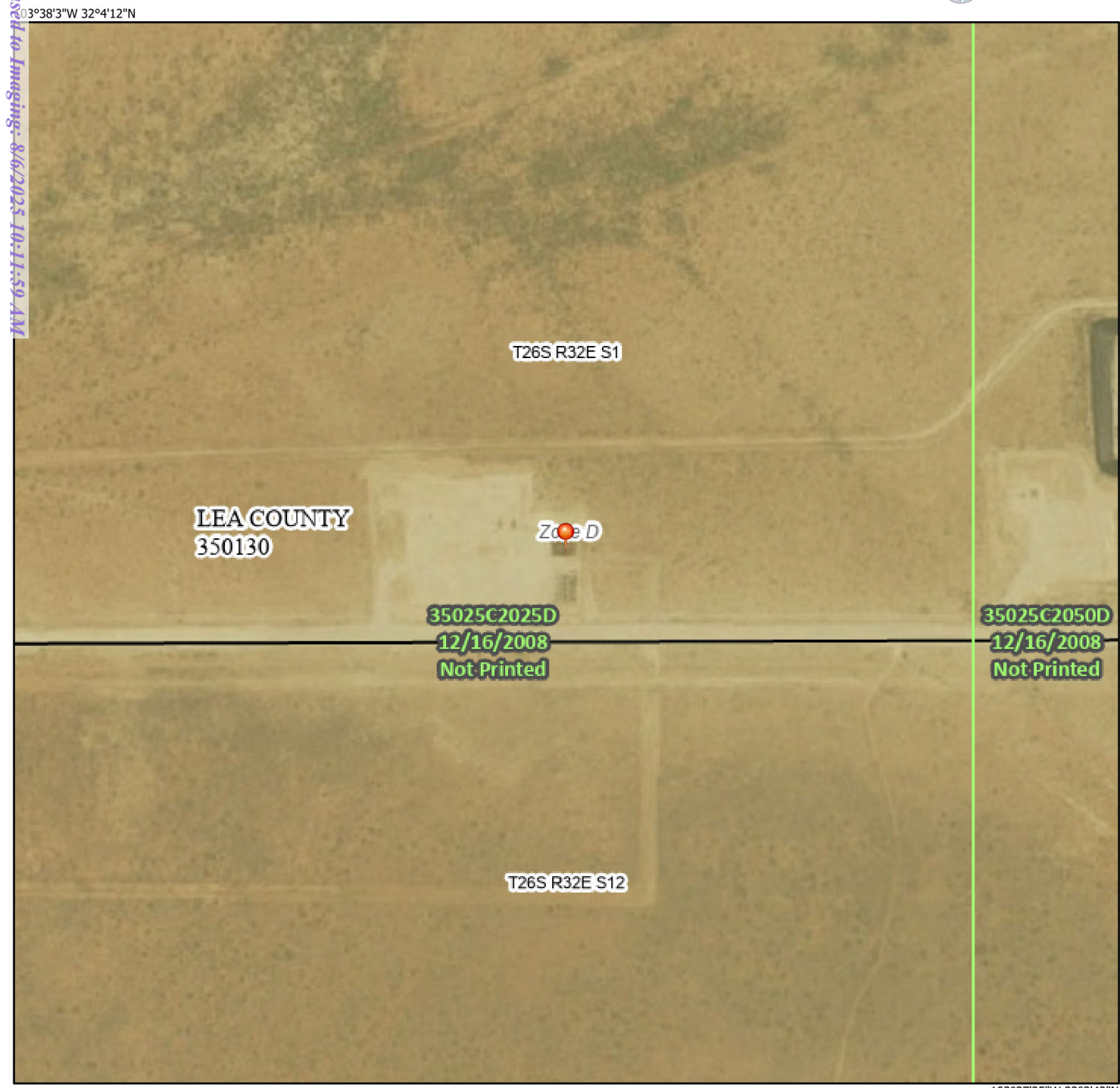
4/10/2025, 1:39:53 PM

— OSE Streams



Source: Esri, Maxar, Earthstar Geographics, and the GIS User Community, Esri, HERE, Garmin, IPC, NM OSE

National Flood Hazard Layer FIRMMette



1:6,000

103°37'25"W 32°3'42"N

Basemap Imagery Source: USGS National Map 2023

Legend

SEE FIS REPORT FOR DETAILED LEGEND AND INDEX MAP FOR FIRM PANEL LAYOUT

SPECIAL FLOOD HAZARD AREAS		Without Base Flood Elevation (BFE) Zone A, V, A99	
		With BFE or Depth Zone AE, AO, AH, VE, AR	
		Regulatory Floodway	
OTHER AREAS OF FLOOD HAZARD		0.2% Annual Chance Flood Hazard, Areas of 1% annual chance flood with average depth less than one foot or with drainage areas of less than one square mile Zone Z	
		Future Conditions 1% Annual Chance Flood Hazard Zone X	
		Area with Reduced Flood Risk due to Levee. See Notes. Zone X	
		Area with Flood Risk due to Levee Zone X	
OTHER AREAS		NO SCREEN Area of Minimal Flood Hazard Zone X	
		Effective LOMRs	
GENERAL STRUCTURES		Area of Undetermined Flood Hazard Zone D	
		Channel, Culvert, or Storm Sewer	
		Levee, Dike, or Floodwall	
		20.2 Cross Sections with 1% Annual Chance Water Surface Elevation	
OTHER FEATURES		17.5 Coastal Transect	
		Base Flood Elevation Line (BFE)	
		Limit of Study	
		Jurisdiction Boundary	
		Coastal Transect Baseline	
		Profile Baseline	
		Hydrographic Feature	
	MAP PANELS		Digital Data Available
			No Digital Data Available
			Unmapped

The pin displayed on the map is an approximate point selected by the user and does not represent an authoritative property location.

This map complies with FEMA's standards for the use of digital flood maps if it is not void as described below. The basemap shown complies with FEMA's basemap accuracy standards

The flood hazard information is derived directly from the authoritative NFHL web services provided by FEMA. This map was exported on 4/10/2025 at 7:02 PM and does not reflect changes or amendments subsequent to this date and time. The NFHL and effective information may change or become superseded by new data over time.

This map image is void if the one or more of the following map elements do not appear: basemap imagery, flood zone labels, legend, scale bar, map creation date, community identifiers, FIRM panel number, and FIRM effective date. Map images for unmapped and unmodernized areas cannot be used for regulatory purposes.

Released to Imaging: 8/6/2025 10:11:59 AM

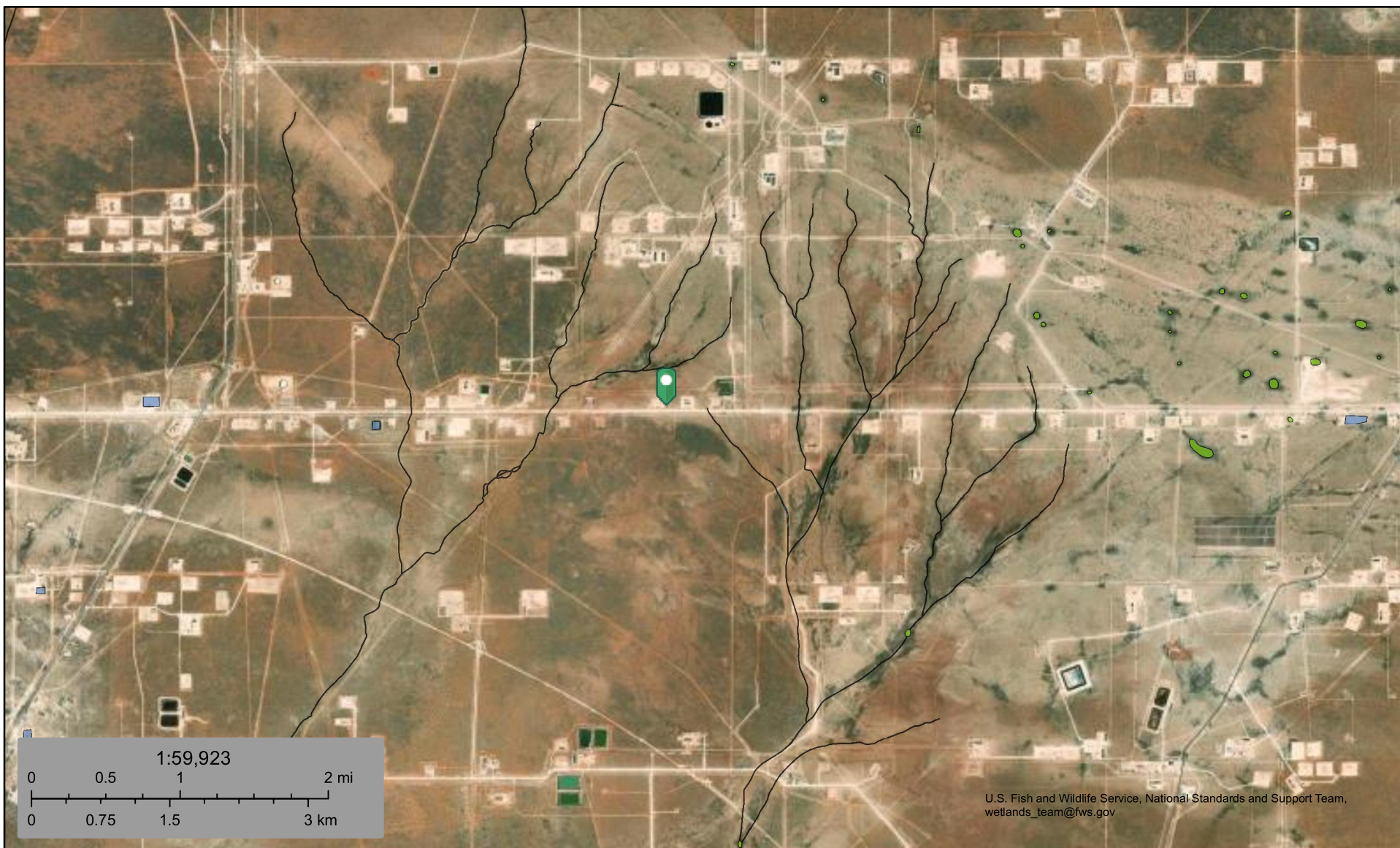
Received by OCD: 7/23/2025 1:44:38 PM



U.S. Fish and Wildlife Service

National Wetlands Inventory

National Wetlands Inventory



U.S. Fish and Wildlife Service, National Standards and Support Team,
wetlands_team@fws.gov

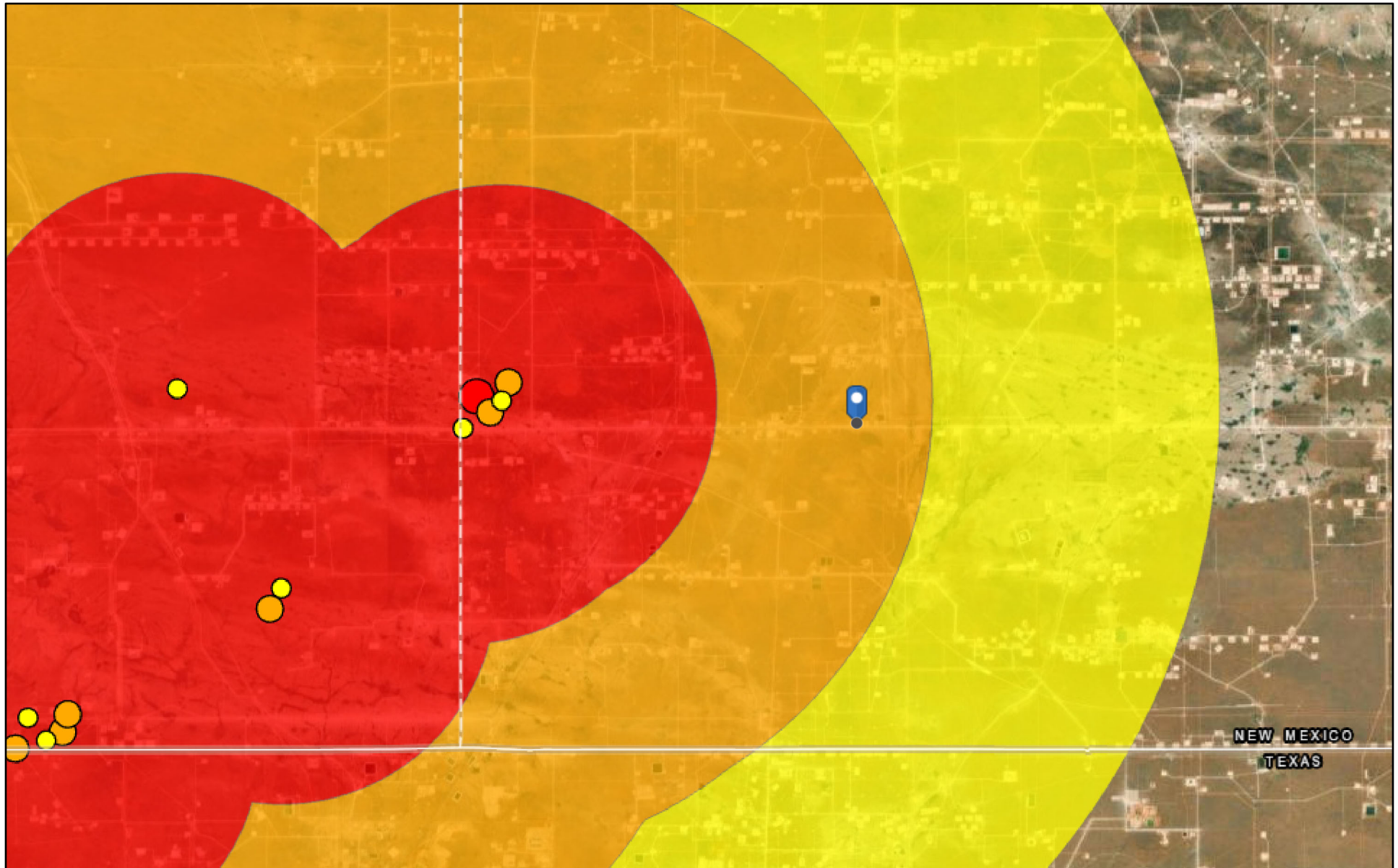
April 10, 2025

Wetlands

- | | | |
|--------------------------------|-----------------------------------|-------|
| Estuarine and Marine Deepwater | Freshwater Emergent Wetland | Lake |
| Estuarine and Marine Wetland | Freshwater Forested/Shrub Wetland | Other |
| Freshwater Pond | Riverine | |

This map is for general reference only. The US Fish and Wildlife Service is not responsible for the accuracy or currentness of the base data shown on this map. All wetlands related data should be used in accordance with the layer metadata found on the Wetlands Mapper web site.

OCD Seismicity Area



4/10/2025, 1:45:34 PM

M2.5+ Earthquakes (2021+)

2.5 - 2.9

3.0 - 3.4

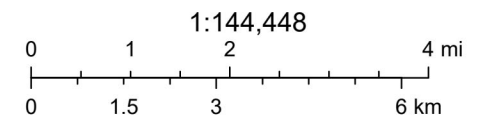
3.5 and above

Seismic Response 2.5 to 2.9

3 mi.

6 mi.

10 mi.

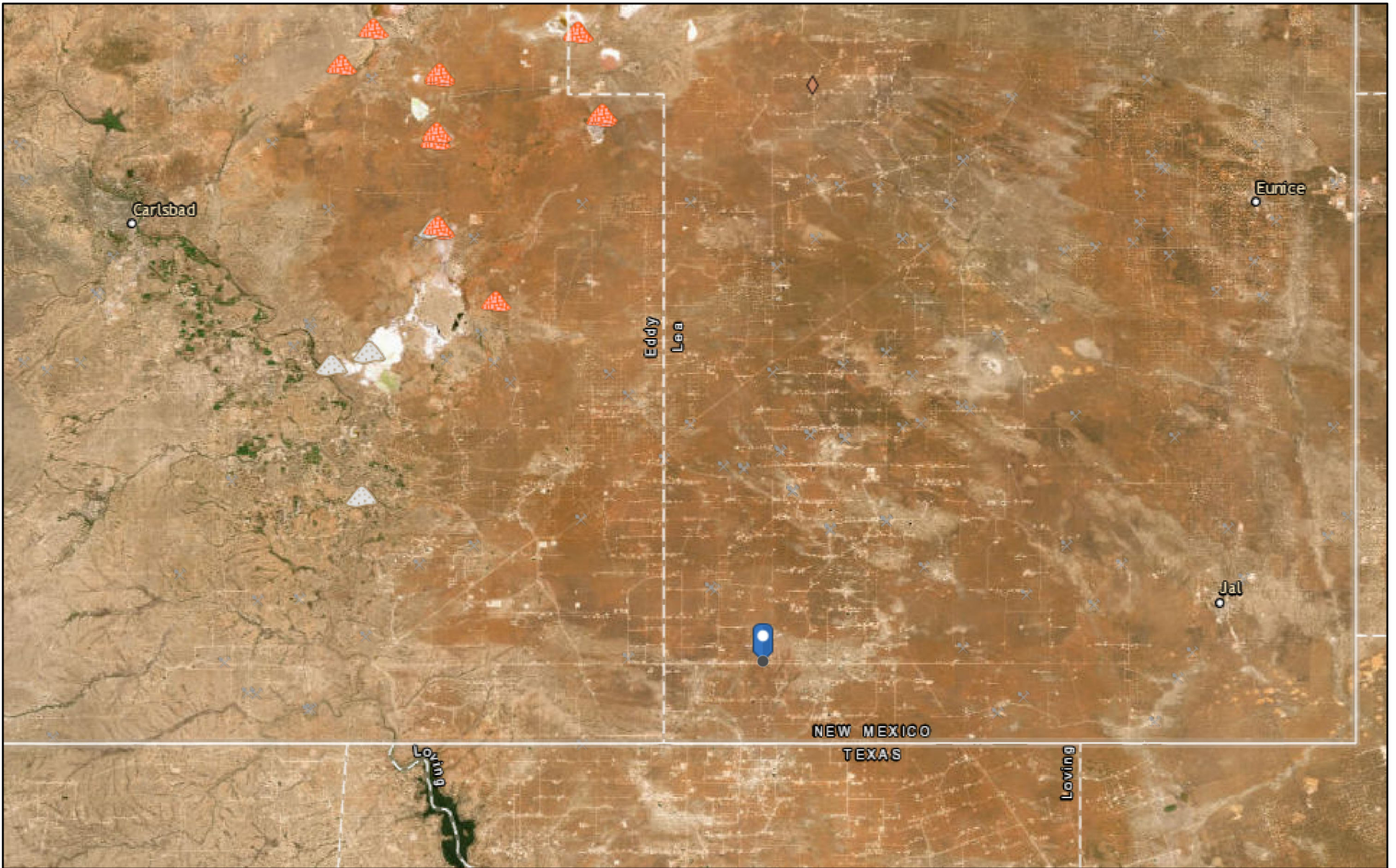


Oil Conservation Division (OCD), Energy, Minerals and Natural Resources Department (EMNRD), Esri, HERE, Garmin, Earthstar Geographics

New Mexico Oil Conservation Division

NM OCD Oil and Gas Map. <http://nm-emnrd.maps.arcgis.com/apps/webappviewer/index.html?id=4d017f2306164de29fd2fb9f8f35ca75>: New Mexico Oil Conservation Division

Active Mines in New Mexico



4/10/2025, 2:15:37 PM

Registered Mines

✕ Aggregate, Stone etc.

✕ Aggregate, Stone etc.

✕

Aggregate, Stone etc.

Aggregate, Stone etc.

Industrial Minerals (Other)

Potash

Salt

NEW MEXICO
TEXAS

1:577,791

0	4.25	8.5	17 mi
---	------	-----	-------

Esri, HERE, Garmin, Earthstar Geographics

EMNRD MMD GIS Coordinator

NM Energy, Minerals and Natural Resources Department (<http://nm-emnrd.maps.arcgis.com/apps/webappviewer/index.html?id=1b5e577974664d689b47790897ca2795>)

APPENDIX C

Laboratory Analytical Data



PHONE (575) 393-2326 ° 101 E. MARLAND ° HOBBS, NM 88240

April 08, 2025

RAY RAMOS

BTA Oil Producers

104 South Pecos

Midland, TX 79701

RE: MESA 9-11 CTB

Enclosed are the results of analyses for samples received by the laboratory on 04/04/25 13:31.

Cardinal Laboratories is accredited through Texas NELAP under certificate number TX-C24-00112. Accreditation applies to drinking water, non-potable water and solid and chemical materials. All accredited analytes are denoted by an asterisk (*). For a complete list of accredited analytes and matrices visit the TCEQ website at www.tceq.texas.gov/field/qa/lab_accred_certif.html.

Cardinal Laboratories is accredited through the State of Colorado Department of Public Health and Environment for:

Method EPA 552.2	Haloacetic Acids (HAA-5)
Method EPA 524.2	Total Trihalomethanes (TTHM)
Method EPA 524.4	Regulated VOCs (V1, V2, V3)

Accreditation applies to public drinking water matrices.

This report meets NELAP requirements and is made up of a cover page, analytical results, and a copy of the original chain-of-custody. If you have any questions concerning this report, please feel free to contact me.

Sincerely,

A handwritten signature in black ink that reads "Celey D. Keene". The signature is written in a cursive, flowing style.

Celey D. Keene

Lab Director/Quality Manager



PHONE (575) 393-2326 ° 101 E. MARLAND ° HOBBS, NM 88240

Analytical Results For:

BTA Oil Producers
 RAY RAMOS
 104 South Pecos
 Midland TX, 79701
 Fax To: (432) 683-0312

Received: 04/04/2025
 Reported: 04/08/2025
 Project Name: MESA 9-11 CTB
 Project Number: 27378
 Project Location: NM

Sampling Date: 04/03/2025
 Sampling Type: Soil
 Sampling Condition: Cool & Intact
 Sample Received By: Tamara Oldaker

Sample ID: AH 1 @ 1' (H252018-01)

BTX 8021B		mg/kg	Analyzed By: JH					S-04	
Analyte	Result	Reporting Limit	Analyzed	Method Blank	BS	% Recovery	True Value QC	RPD	Qualifier
Benzene*	<0.025	0.025	04/07/2025	ND	1.89	94.4	2.00	0.959	
Toluene*	0.080	0.050	04/07/2025	ND	2.01	100	2.00	0.147	
Ethylbenzene*	0.081	0.050	04/07/2025	ND	2.02	101	2.00	0.552	
Total Xylenes*	1.12	0.150	04/07/2025	ND	6.42	107	6.00	0.853	
Total BTX	1.28	0.275	04/07/2025	ND					

Surrogate: 4-Bromofluorobenzene (PID) 156 % 71.5-134

Chloride, SM4500Cl-B		mg/kg	Analyzed By: KV						
Analyte	Result	Reporting Limit	Analyzed	Method Blank	BS	% Recovery	True Value QC	RPD	Qualifier
Chloride	4880	16.0	04/08/2025	ND	416	104	400	3.77	

TPH TX1005		mg/kg	Analyzed By: MS						
Analyte	Result	Reporting Limit	Analyzed	Method Blank	BS	% Recovery	True Value QC	RPD	Qualifier
GRO C6-C12	781	25.0	04/07/2025	ND	210	105	200	0.935	
DRO >C12-C28	7490	25.0	04/07/2025	ND	177	88.7	200	0.496	
DRO >C28-C35	1560	25.0	04/07/2025	ND					
Total TPH C6-C35*	9830	25.0	04/07/2025	ND	388	96.9	400	0.734	

Surrogate: 1-Chlorooctane 102 % 48.6-153

Surrogate: 1-Chlorooctadecane 148 % 41.9-170

Cardinal Laboratories

*=Accredited Analyte

PLEASE NOTE: Liability and Damages. Cardinal's liability and client's exclusive remedy for any claim arising, whether based in contract or tort, shall be limited to the amount paid by client for analyses. All claims, including those for negligence and any other cause whatsoever shall be deemed waived unless made in writing and received by Cardinal within thirty (30) days after completion of the applicable service. In no event shall Cardinal be liable for incidental or consequential damages, including, without limitation, business interruptions, loss of use, or loss of profits incurred by client, its subsidiaries, affiliates or successors arising out of or related to the performance of the services hereunder by Cardinal, regardless of whether such claim is based upon any of the above stated reasons or otherwise. Results relate only to the samples identified above. This report shall not be reproduced except in full with written approval of Cardinal Laboratories.

Celey D. Keene, Lab Director/Quality Manager



PHONE (575) 393-2326 ° 101 E. MARLAND ° HOBBS, NM 88240

Analytical Results For:

BTA Oil Producers
 RAY RAMOS
 104 South Pecos
 Midland TX, 79701
 Fax To: (432) 683-0312

Received: 04/04/2025
 Reported: 04/08/2025
 Project Name: MESA 9-11 CTB
 Project Number: 27378
 Project Location: NM

Sampling Date: 04/03/2025
 Sampling Type: Soil
 Sampling Condition: Cool & Intact
 Sample Received By: Tamara Oldaker

Sample ID: AH 1 @ 2' (H252018-02)

BTEX 8021B		mg/kg		Analyzed By: JH						
Analyte	Result	Reporting Limit	Analyzed	Method Blank	BS	% Recovery	True Value QC	RPD	Qualifier	
Benzene*	<0.025	0.025	04/07/2025	ND	1.89	94.4	2.00	0.959		
Toluene*	<0.050	0.050	04/07/2025	ND	2.01	100	2.00	0.147		
Ethylbenzene*	<0.050	0.050	04/07/2025	ND	2.02	101	2.00	0.552		
Total Xylenes*	<0.150	0.150	04/07/2025	ND	6.42	107	6.00	0.853		
Total BTEX	<0.275	0.275	04/07/2025	ND						

Surrogate: 4-Bromofluorobenzene (PID) 122 % 71.5-134

Chloride, SM4500Cl-B		mg/kg		Analyzed By: KV						
Analyte	Result	Reporting Limit	Analyzed	Method Blank	BS	% Recovery	True Value QC	RPD	Qualifier	
Chloride	1470	16.0	04/08/2025	ND	416	104	400	3.77		

TPH TX1005		mg/kg		Analyzed By: MS					
Analyte	Result	Reporting Limit	Analyzed	Method Blank	BS	% Recovery	True Value QC	RPD	Qualifier
GRO C6-C12	<25.0	25.0	04/07/2025	ND	210	105	200	0.935	
DRO >C12-C28	<25.0	25.0	04/07/2025	ND	177	88.7	200	0.496	
DRO >C28-C35	<25.0	25.0	04/07/2025	ND					
Total TPH C6-C35*	<25.0	25.0	04/07/2025	ND	388	96.9	400	0.734	

Surrogate: 1-Chlorooctane 74.5 % 48.6-153

Surrogate: 1-Chlorooctadecane 76.2 % 41.9-170

Cardinal Laboratories

*=Accredited Analyte

PLEASE NOTE: Liability and Damages. Cardinal's liability and client's exclusive remedy for any claim arising, whether based in contract or tort, shall be limited to the amount paid by client for analyses. All claims, including those for negligence and any other cause whatsoever shall be deemed waived unless made in writing and received by Cardinal within thirty (30) days after completion of the applicable service. In no event shall Cardinal be liable for incidental or consequential damages, including, without limitation, business interruptions, loss of use, or loss of profits incurred by client, its subsidiaries, affiliates or successors arising out of or related to the performance of the services hereunder by Cardinal, regardless of whether such claim is based upon any of the above stated reasons or otherwise. Results relate only to the samples identified above. This report shall not be reproduced except in full with written approval of Cardinal Laboratories.

Celey D. Keene, Lab Director/Quality Manager



PHONE (575) 393-2326 ° 101 E. MARLAND ° HOBBS, NM 88240

Analytical Results For:

BTA Oil Producers
 RAY RAMOS
 104 South Pecos
 Midland TX, 79701
 Fax To: (432) 683-0312

Received: 04/04/2025
 Reported: 04/08/2025
 Project Name: MESA 9-11 CTB
 Project Number: 27378
 Project Location: NM

Sampling Date: 04/03/2025
 Sampling Type: Soil
 Sampling Condition: Cool & Intact
 Sample Received By: Tamara Oldaker

Sample ID: AH 1 @ 3' (H252018-03)

BTEx 8021B		mg/kg		Analyzed By: JH						
Analyte	Result	Reporting Limit	Analyzed	Method Blank	BS	% Recovery	True Value QC	RPD	Qualifier	
Benzene*	<0.025	0.025	04/07/2025	ND	1.89	94.4	2.00	0.959		
Toluene*	<0.050	0.050	04/07/2025	ND	2.01	100	2.00	0.147		
Ethylbenzene*	<0.050	0.050	04/07/2025	ND	2.02	101	2.00	0.552		
Total Xylenes*	<0.150	0.150	04/07/2025	ND	6.42	107	6.00	0.853		
Total BTEX	<0.275	0.275	04/07/2025	ND						

Surrogate: 4-Bromofluorobenzene (PID) 125 % 71.5-134

Chloride, SM4500Cl-B		mg/kg		Analyzed By: KV					
Analyte	Result	Reporting Limit	Analyzed	Method Blank	BS	% Recovery	True Value QC	RPD	Qualifier
Chloride	992	16.0	04/08/2025	ND	416	104	400	3.77	

TPH TX1005		mg/kg		Analyzed By: MS					
Analyte	Result	Reporting Limit	Analyzed	Method Blank	BS	% Recovery	True Value QC	RPD	Qualifier
GRO C6-C12	<25.0	25.0	04/07/2025	ND	210	105	200	0.665	
DRO >C12-C28	<25.0	25.0	04/07/2025	ND	212	106	200	2.48	
DRO >C28-C35	<25.0	25.0	04/07/2025	ND					
Total TPH C6-C35*	<25.0	25.0	04/07/2025	ND	422	105	400	1.57	

Surrogate: 1-Chlorooctane 80.0 % 48.6-153

Surrogate: 1-Chlorooctadecane 73.0 % 41.9-170

Cardinal Laboratories

*=Accredited Analyte

PLEASE NOTE: Liability and Damages. Cardinal's liability and client's exclusive remedy for any claim arising, whether based in contract or tort, shall be limited to the amount paid by client for analyses. All claims, including those for negligence and any other cause whatsoever shall be deemed waived unless made in writing and received by Cardinal within thirty (30) days after completion of the applicable service. In no event shall Cardinal be liable for incidental or consequential damages, including, without limitation, business interruptions, loss of use, or loss of profits incurred by client, its subsidiaries, affiliates or successors arising out of or related to the performance of the services hereunder by Cardinal, regardless of whether such claim is based upon any of the above stated reasons or otherwise. Results relate only to the samples identified above. This report shall not be reproduced except in full with written approval of Cardinal Laboratories.

Celey D. Keene, Lab Director/Quality Manager



PHONE (575) 393-2326 ° 101 E. MARLAND ° HOBBS, NM 88240

Analytical Results For:

BTA Oil Producers
 RAY RAMOS
 104 South Pecos
 Midland TX, 79701
 Fax To: (432) 683-0312

Received: 04/04/2025
 Reported: 04/08/2025
 Project Name: MESA 9-11 CTB
 Project Number: 27378
 Project Location: NM

Sampling Date: 04/03/2025
 Sampling Type: Soil
 Sampling Condition: Cool & Intact
 Sample Received By: Tamara Oldaker

Sample ID: AH - 2 @ 1' (H252018-04)

BTEx 8021B		mg/kg		Analyzed By: JH					
Analyte	Result	Reporting Limit	Analyzed	Method Blank	BS	% Recovery	True Value QC	RPD	Qualifier
Benzene*	<0.025	0.025	04/07/2025	ND	1.89	94.4	2.00	0.959	
Toluene*	<0.050	0.050	04/07/2025	ND	2.01	100	2.00	0.147	
Ethylbenzene*	<0.050	0.050	04/07/2025	ND	2.02	101	2.00	0.552	
Total Xylenes*	<0.150	0.150	04/07/2025	ND	6.42	107	6.00	0.853	
Total BTEX	<0.275	0.275	04/07/2025	ND					

Surrogate: 4-Bromofluorobenzene (PID) 123 % 71.5-134

Chloride, SM4500Cl-B		mg/kg		Analyzed By: KV					
Analyte	Result	Reporting Limit	Analyzed	Method Blank	BS	% Recovery	True Value QC	RPD	Qualifier
Chloride	288	16.0	04/08/2025	ND	416	104	400	3.77	

TPH TX1005		mg/kg		Analyzed By: MS					
Analyte	Result	Reporting Limit	Analyzed	Method Blank	BS	% Recovery	True Value QC	RPD	Qualifier
GRO C6-C12	<25.0	25.0	04/07/2025	ND	210	105	200	0.665	
DRO >C12-C28	29.6	25.0	04/07/2025	ND	212	106	200	2.48	
DRO >C28-C35	<25.0	25.0	04/07/2025	ND					
Total TPH C6-C35*	29.6	25.0	04/07/2025	ND	422	105	400	1.57	

Surrogate: 1-Chlorooctane 75.2 % 48.6-153

Surrogate: 1-Chlorooctadecane 67.9 % 41.9-170

Cardinal Laboratories

*=Accredited Analyte

PLEASE NOTE: Liability and Damages. Cardinal's liability and client's exclusive remedy for any claim arising, whether based in contract or tort, shall be limited to the amount paid by client for analyses. All claims, including those for negligence and any other cause whatsoever shall be deemed waived unless made in writing and received by Cardinal within thirty (30) days after completion of the applicable service. In no event shall Cardinal be liable for incidental or consequential damages, including, without limitation, business interruptions, loss of use, or loss of profits incurred by client, its subsidiaries, affiliates or successors arising out of or related to the performance of the services hereunder by Cardinal, regardless of whether such claim is based upon any of the above stated reasons or otherwise. Results relate only to the samples identified above. This report shall not be reproduced except in full with written approval of Cardinal Laboratories.

Celey D. Keene, Lab Director/Quality Manager



PHONE (575) 393-2326 ° 101 E. MARLAND ° HOBBS, NM 88240

Analytical Results For:

BTA Oil Producers
 RAY RAMOS
 104 South Pecos
 Midland TX, 79701
 Fax To: (432) 683-0312

Received: 04/04/2025
 Reported: 04/08/2025
 Project Name: MESA 9-11 CTB
 Project Number: 27378
 Project Location: NM

Sampling Date: 04/03/2025
 Sampling Type: Soil
 Sampling Condition: Cool & Intact
 Sample Received By: Tamara Oldaker

Sample ID: AH - 2 @ 2' (H252018-05)

BTEx 8021B		mg/kg		Analyzed By: JH						
Analyte	Result	Reporting Limit	Analyzed	Method Blank	BS	% Recovery	True Value QC	RPD	Qualifier	
Benzene*	<0.025	0.025	04/07/2025	ND	1.89	94.4	2.00	0.959		
Toluene*	<0.050	0.050	04/07/2025	ND	2.01	100	2.00	0.147		
Ethylbenzene*	<0.050	0.050	04/07/2025	ND	2.02	101	2.00	0.552		
Total Xylenes*	<0.150	0.150	04/07/2025	ND	6.42	107	6.00	0.853		
Total BTEX	<0.275	0.275	04/07/2025	ND						

Surrogate: 4-Bromofluorobenzene (PID) 125 % 71.5-134

Chloride, SM4500Cl-B		mg/kg		Analyzed By: KV					
Analyte	Result	Reporting Limit	Analyzed	Method Blank	BS	% Recovery	True Value QC	RPD	Qualifier
Chloride	192	16.0	04/08/2025	ND	416	104	400	3.77	

TPH TX1005		mg/kg		Analyzed By: MS					
Analyte	Result	Reporting Limit	Analyzed	Method Blank	BS	% Recovery	True Value QC	RPD	Qualifier
GRO C6-C12	<25.0	25.0	04/07/2025	ND	210	105	200	0.665	
DRO >C12-C28	<25.0	25.0	04/07/2025	ND	212	106	200	2.48	
DRO >C28-C35	<25.0	25.0	04/07/2025	ND					
Total TPH C6-C35*	<25.0	25.0	04/07/2025	ND	422	105	400	1.57	

Surrogate: 1-Chlorooctane 81.8 % 48.6-153

Surrogate: 1-Chlorooctadecane 75.4 % 41.9-170

Cardinal Laboratories

*=Accredited Analyte

PLEASE NOTE: Liability and Damages. Cardinal's liability and client's exclusive remedy for any claim arising, whether based in contract or tort, shall be limited to the amount paid by client for analyses. All claims, including those for negligence and any other cause whatsoever shall be deemed waived unless made in writing and received by Cardinal within thirty (30) days after completion of the applicable service. In no event shall Cardinal be liable for incidental or consequential damages, including, without limitation, business interruptions, loss of use, or loss of profits incurred by client, its subsidiaries, affiliates or successors arising out of or related to the performance of the services hereunder by Cardinal, regardless of whether such claim is based upon any of the above stated reasons or otherwise. Results relate only to the samples identified above. This report shall not be reproduced except in full with written approval of Cardinal Laboratories.

Celey D. Keene, Lab Director/Quality Manager



PHONE (575) 393-2326 ° 101 E. MARLAND ° HOBBS, NM 88240

Analytical Results For:

BTA Oil Producers
 RAY RAMOS
 104 South Pecos
 Midland TX, 79701
 Fax To: (432) 683-0312

Received: 04/04/2025
 Reported: 04/08/2025
 Project Name: MESA 9-11 CTB
 Project Number: 27378
 Project Location: NM

Sampling Date: 04/03/2025
 Sampling Type: Soil
 Sampling Condition: Cool & Intact
 Sample Received By: Tamara Oldaker

Sample ID: AH - 2 @ 3' (H252018-06)

BTEx 8021B		mg/kg		Analyzed By: JH					
Analyte	Result	Reporting Limit	Analyzed	Method Blank	BS	% Recovery	True Value QC	RPD	Qualifier
Benzene*	<0.025	0.025	04/07/2025	ND	1.89	94.4	2.00	0.959	
Toluene*	<0.050	0.050	04/07/2025	ND	2.01	100	2.00	0.147	
Ethylbenzene*	<0.050	0.050	04/07/2025	ND	2.02	101	2.00	0.552	
Total Xylenes*	<0.150	0.150	04/07/2025	ND	6.42	107	6.00	0.853	
Total BTEX	<0.275	0.275	04/07/2025	ND					

Surrogate: 4-Bromofluorobenzene (PID) 124 % 71.5-134

Chloride, SM4500Cl-B		mg/kg		Analyzed By: KV					
Analyte	Result	Reporting Limit	Analyzed	Method Blank	BS	% Recovery	True Value QC	RPD	Qualifier
Chloride	192	16.0	04/08/2025	ND	416	104	400	3.77	

TPH TX1005		mg/kg		Analyzed By: MS					
Analyte	Result	Reporting Limit	Analyzed	Method Blank	BS	% Recovery	True Value QC	RPD	Qualifier
GRO C6-C12	<25.0	25.0	04/07/2025	ND	210	105	200	0.665	
DRO >C12-C28	<25.0	25.0	04/07/2025	ND	212	106	200	2.48	
DRO >C28-C35	134	25.0	04/07/2025	ND					
Total TPH C6-C35*	134	25.0	04/07/2025	ND	422	105	400	1.57	

Surrogate: 1-Chlorooctane 71.1 % 48.6-153

Surrogate: 1-Chlorooctadecane 60.8 % 41.9-170

Cardinal Laboratories

*=Accredited Analyte

PLEASE NOTE: Liability and Damages. Cardinal's liability and client's exclusive remedy for any claim arising, whether based in contract or tort, shall be limited to the amount paid by client for analyses. All claims, including those for negligence and any other cause whatsoever shall be deemed waived unless made in writing and received by Cardinal within thirty (30) days after completion of the applicable service. In no event shall Cardinal be liable for incidental or consequential damages, including, without limitation, business interruptions, loss of use, or loss of profits incurred by client, its subsidiaries, affiliates or successors arising out of or related to the performance of the services hereunder by Cardinal, regardless of whether such claim is based upon any of the above stated reasons or otherwise. Results relate only to the samples identified above. This report shall not be reproduced except in full with written approval of Cardinal Laboratories.

Celey D. Keene, Lab Director/Quality Manager



PHONE (575) 393-2326 ° 101 E. MARLAND ° HOBBS, NM 88240

Analytical Results For:

BTA Oil Producers
 RAY RAMOS
 104 South Pecos
 Midland TX, 79701
 Fax To: (432) 683-0312

Received: 04/04/2025
 Reported: 04/08/2025
 Project Name: MESA 9-11 CTB
 Project Number: 27378
 Project Location: NM

Sampling Date: 04/03/2025
 Sampling Type: Soil
 Sampling Condition: Cool & Intact
 Sample Received By: Tamara Oldaker

Sample ID: AH - 3 @ 1' (H252018-07)

BTEx 8021B		mg/kg		Analyzed By: JH					
Analyte	Result	Reporting Limit	Analyzed	Method Blank	BS	% Recovery	True Value QC	RPD	Qualifier
Benzene*	<0.025	0.025	04/07/2025	ND	1.89	94.4	2.00	0.959	
Toluene*	<0.050	0.050	04/07/2025	ND	2.01	100	2.00	0.147	
Ethylbenzene*	<0.050	0.050	04/07/2025	ND	2.02	101	2.00	0.552	
Total Xylenes*	<0.150	0.150	04/07/2025	ND	6.42	107	6.00	0.853	
Total BTEX	<0.275	0.275	04/07/2025	ND					

Surrogate: 4-Bromofluorobenzene (PID) 125 % 71.5-134

Chloride, SM4500Cl-B		mg/kg		Analyzed By: KV						
Analyte	Result	Reporting Limit	Analyzed	Method Blank	BS	% Recovery	True Value QC	RPD	Qualifier	
Chloride	8400	16.0	04/08/2025	ND	416	104	400	3.77		

TPH TX1005		mg/kg		Analyzed By: MS					
Analyte	Result	Reporting Limit	Analyzed	Method Blank	BS	% Recovery	True Value QC	RPD	Qualifier
GRO C6-C12	<25.0	25.0	04/07/2025	ND	210	105	200	0.665	
DRO >C12-C28	55.1	25.0	04/07/2025	ND	212	106	200	2.48	
DRO >C28-C35	49.2	25.0	04/07/2025	ND					
Total TPH C6-C35*	104	25.0	04/07/2025	ND	422	105	400	1.57	

Surrogate: 1-Chlorooctane 84.2 % 48.6-153

Surrogate: 1-Chlorooctadecane 78.9 % 41.9-170

Cardinal Laboratories

*=Accredited Analyte

PLEASE NOTE: Liability and Damages. Cardinal's liability and client's exclusive remedy for any claim arising, whether based in contract or tort, shall be limited to the amount paid by client for analyses. All claims, including those for negligence and any other cause whatsoever shall be deemed waived unless made in writing and received by Cardinal within thirty (30) days after completion of the applicable service. In no event shall Cardinal be liable for incidental or consequential damages, including, without limitation, business interruptions, loss of use, or loss of profits incurred by client, its subsidiaries, affiliates or successors arising out of or related to the performance of the services hereunder by Cardinal, regardless of whether such claim is based upon any of the above stated reasons or otherwise. Results relate only to the samples identified above. This report shall not be reproduced except in full with written approval of Cardinal Laboratories.

Celey D. Keene, Lab Director/Quality Manager



PHONE (575) 393-2326 ° 101 E. MARLAND ° HOBBS, NM 88240

Analytical Results For:

BTA Oil Producers
 RAY RAMOS
 104 South Pecos
 Midland TX, 79701
 Fax To: (432) 683-0312

Received: 04/04/2025
 Reported: 04/08/2025
 Project Name: MESA 9-11 CTB
 Project Number: 27378
 Project Location: NM

Sampling Date: 04/03/2025
 Sampling Type: Soil
 Sampling Condition: Cool & Intact
 Sample Received By: Tamara Oldaker

Sample ID: AH - 3 @ 2' (H252018-08)

BTEx 8021B		mg/kg		Analyzed By: JH					
Analyte	Result	Reporting Limit	Analyzed	Method Blank	BS	% Recovery	True Value QC	RPD	Qualifier
Benzene*	<0.025	0.025	04/07/2025	ND	1.89	94.4	2.00	0.959	
Toluene*	<0.050	0.050	04/07/2025	ND	2.01	100	2.00	0.147	
Ethylbenzene*	<0.050	0.050	04/07/2025	ND	2.02	101	2.00	0.552	
Total Xylenes*	<0.150	0.150	04/07/2025	ND	6.42	107	6.00	0.853	
Total BTEX	<0.275	0.275	04/07/2025	ND					

Surrogate: 4-Bromofluorobenzene (PID) 124 % 71.5-134

Chloride, SM4500Cl-B		mg/kg		Analyzed By: KV					
Analyte	Result	Reporting Limit	Analyzed	Method Blank	BS	% Recovery	True Value QC	RPD	Qualifier
Chloride	768	16.0	04/08/2025	ND	416	104	400	3.77	

TPH TX1005		mg/kg		Analyzed By: MS					
Analyte	Result	Reporting Limit	Analyzed	Method Blank	BS	% Recovery	True Value QC	RPD	Qualifier
GRO C6-C12	<25.0	25.0	04/07/2025	ND	210	105	200	0.665	
DRO >C12-C28	<25.0	25.0	04/07/2025	ND	212	106	200	2.48	
DRO >C28-C35	<25.0	25.0	04/07/2025	ND					
Total TPH C6-C35*	<25.0	25.0	04/07/2025	ND	422	105	400	1.57	

Surrogate: 1-Chlorooctane 83.2 % 48.6-153

Surrogate: 1-Chlorooctadecane 75.7 % 41.9-170

Cardinal Laboratories

*=Accredited Analyte

PLEASE NOTE: Liability and Damages. Cardinal's liability and client's exclusive remedy for any claim arising, whether based in contract or tort, shall be limited to the amount paid by client for analyses. All claims, including those for negligence and any other cause whatsoever shall be deemed waived unless made in writing and received by Cardinal within thirty (30) days after completion of the applicable service. In no event shall Cardinal be liable for incidental or consequential damages, including, without limitation, business interruptions, loss of use, or loss of profits incurred by client, its subsidiaries, affiliates or successors arising out of or related to the performance of the services hereunder by Cardinal, regardless of whether such claim is based upon any of the above stated reasons or otherwise. Results relate only to the samples identified above. This report shall not be reproduced except in full with written approval of Cardinal Laboratories.

Celey D. Keene, Lab Director/Quality Manager



PHONE (575) 393-2326 ° 101 E. MARLAND ° HOBBS, NM 88240

Analytical Results For:

BTA Oil Producers
 RAY RAMOS
 104 South Pecos
 Midland TX, 79701
 Fax To: (432) 683-0312

Received: 04/04/2025
 Reported: 04/08/2025
 Project Name: MESA 9-11 CTB
 Project Number: 27378
 Project Location: NM

Sampling Date: 04/03/2025
 Sampling Type: Soil
 Sampling Condition: Cool & Intact
 Sample Received By: Tamara Oldaker

Sample ID: AH - 3 @ 3' (H252018-09)

BTEx 8021B		mg/kg		Analyzed By: JH						
Analyte	Result	Reporting Limit	Analyzed	Method Blank	BS	% Recovery	True Value QC	RPD	Qualifier	
Benzene*	<0.025	0.025	04/07/2025	ND	1.89	94.4	2.00	0.959		
Toluene*	<0.050	0.050	04/07/2025	ND	2.01	100	2.00	0.147		
Ethylbenzene*	<0.050	0.050	04/07/2025	ND	2.02	101	2.00	0.552		
Total Xylenes*	<0.150	0.150	04/07/2025	ND	6.42	107	6.00	0.853		
Total BTEX	<0.275	0.275	04/07/2025	ND						

Surrogate: 4-Bromofluorobenzene (PID) 125 % 71.5-134

Chloride, SM4500Cl-B		mg/kg		Analyzed By: KV					
Analyte	Result	Reporting Limit	Analyzed	Method Blank	BS	% Recovery	True Value QC	RPD	Qualifier
Chloride	640	16.0	04/08/2025	ND	416	104	400	3.77	

TPH TX1005		mg/kg		Analyzed By: MS					
Analyte	Result	Reporting Limit	Analyzed	Method Blank	BS	% Recovery	True Value QC	RPD	Qualifier
GRO C6-C12	<25.0	25.0	04/07/2025	ND	210	105	200	0.665	
DRO >C12-C28	<25.0	25.0	04/07/2025	ND	212	106	200	2.48	
DRO >C28-C35	<25.0	25.0	04/07/2025	ND					
Total TPH C6-C35*	<25.0	25.0	04/07/2025	ND	422	105	400	1.57	

Surrogate: 1-Chlorooctane 85.0 % 48.6-153

Surrogate: 1-Chlorooctadecane 76.4 % 41.9-170

Cardinal Laboratories

*=Accredited Analyte

PLEASE NOTE: Liability and Damages. Cardinal's liability and client's exclusive remedy for any claim arising, whether based in contract or tort, shall be limited to the amount paid by client for analyses. All claims, including those for negligence and any other cause whatsoever shall be deemed waived unless made in writing and received by Cardinal within thirty (30) days after completion of the applicable service. In no event shall Cardinal be liable for incidental or consequential damages, including, without limitation, business interruptions, loss of use, or loss of profits incurred by client, its subsidiaries, affiliates or successors arising out of or related to the performance of the services hereunder by Cardinal, regardless of whether such claim is based upon any of the above stated reasons or otherwise. Results relate only to the samples identified above. This report shall not be reproduced except in full with written approval of Cardinal Laboratories.

Celey D. Keene, Lab Director/Quality Manager



PHONE (575) 393-2326 ° 101 E. MARLAND ° HOBBS, NM 88240

Analytical Results For:

BTA Oil Producers
 RAY RAMOS
 104 South Pecos
 Midland TX, 79701
 Fax To: (432) 683-0312

Received: 04/04/2025
 Reported: 04/08/2025
 Project Name: MESA 9-11 CTB
 Project Number: 27378
 Project Location: NM

Sampling Date: 04/03/2025
 Sampling Type: Soil
 Sampling Condition: Cool & Intact
 Sample Received By: Tamara Oldaker

Sample ID: AH - 4 @ 1' (H252018-10)

BTEx 8021B		mg/kg		Analyzed By: JH						
Analyte	Result	Reporting Limit	Analyzed	Method Blank	BS	% Recovery	True Value QC	RPD	Qualifier	
Benzene*	<0.025	0.025	04/07/2025	ND	1.89	94.4	2.00	0.959		
Toluene*	<0.050	0.050	04/07/2025	ND	2.01	100	2.00	0.147		
Ethylbenzene*	<0.050	0.050	04/07/2025	ND	2.02	101	2.00	0.552		
Total Xylenes*	<0.150	0.150	04/07/2025	ND	6.42	107	6.00	0.853		
Total BTEX	<0.275	0.275	04/07/2025	ND						

Surrogate: 4-Bromofluorobenzene (PID) 122 % 71.5-134

Chloride, SM4500Cl-B		mg/kg		Analyzed By: KV					
Analyte	Result	Reporting Limit	Analyzed	Method Blank	BS	% Recovery	True Value QC	RPD	Qualifier
Chloride	304	16.0	04/08/2025	ND	416	104	400	3.77	

TPH TX1005		mg/kg		Analyzed By: MS					
Analyte	Result	Reporting Limit	Analyzed	Method Blank	BS	% Recovery	True Value QC	RPD	Qualifier
GRO C6-C12	<25.0	25.0	04/07/2025	ND	210	105	200	0.665	
DRO >C12-C28	39.2	25.0	04/07/2025	ND	212	106	200	2.48	
DRO >C28-C35	420	25.0	04/07/2025	ND					
Total TPH C6-C35*	459	25.0	04/07/2025	ND	422	105	400	1.57	

Surrogate: 1-Chlorooctane 80.2 % 48.6-153

Surrogate: 1-Chlorooctadecane 67.2 % 41.9-170

Cardinal Laboratories

*=Accredited Analyte

PLEASE NOTE: Liability and Damages. Cardinal's liability and client's exclusive remedy for any claim arising, whether based in contract or tort, shall be limited to the amount paid by client for analyses. All claims, including those for negligence and any other cause whatsoever shall be deemed waived unless made in writing and received by Cardinal within thirty (30) days after completion of the applicable service. In no event shall Cardinal be liable for incidental or consequential damages, including, without limitation, business interruptions, loss of use, or loss of profits incurred by client, its subsidiaries, affiliates or successors arising out of or related to the performance of the services hereunder by Cardinal, regardless of whether such claim is based upon any of the above stated reasons or otherwise. Results relate only to the samples identified above. This report shall not be reproduced except in full with written approval of Cardinal Laboratories.

Celey D. Keene, Lab Director/Quality Manager



PHONE (575) 393-2326 ° 101 E. MARLAND ° HOBBS, NM 88240

Analytical Results For:

BTA Oil Producers
 RAY RAMOS
 104 South Pecos
 Midland TX, 79701
 Fax To: (432) 683-0312

Received: 04/04/2025
 Reported: 04/08/2025
 Project Name: MESA 9-11 CTB
 Project Number: 27378
 Project Location: NM

Sampling Date: 04/03/2025
 Sampling Type: Soil
 Sampling Condition: Cool & Intact
 Sample Received By: Tamara Oldaker

Sample ID: H - 1 @ 1' (H252018-12)

BTEx 8021B		mg/kg		Analyzed By: JH					
Analyte	Result	Reporting Limit	Analyzed	Method Blank	BS	% Recovery	True Value QC	RPD	Qualifier
Benzene*	<0.025	0.025	04/07/2025	ND	1.89	94.4	2.00	0.959	
Toluene*	<0.050	0.050	04/07/2025	ND	2.01	100	2.00	0.147	
Ethylbenzene*	<0.050	0.050	04/07/2025	ND	2.02	101	2.00	0.552	
Total Xylenes*	<0.150	0.150	04/07/2025	ND	6.42	107	6.00	0.853	
Total BTEX	<0.275	0.275	04/07/2025	ND					

Surrogate: 4-Bromofluorobenzene (PID) 124 % 71.5-134

Chloride, SM4500Cl-B		mg/kg		Analyzed By: KV					
Analyte	Result	Reporting Limit	Analyzed	Method Blank	BS	% Recovery	True Value QC	RPD	Qualifier
Chloride	192	16.0	04/08/2025	ND	416	104	400	3.77	

TPH TX1005		mg/kg		Analyzed By: MS					
Analyte	Result	Reporting Limit	Analyzed	Method Blank	BS	% Recovery	True Value QC	RPD	Qualifier
GRO C6-C12	<25.0	25.0	04/07/2025	ND	210	105	200	0.665	
DRO >C12-C28	<25.0	25.0	04/07/2025	ND	212	106	200	2.48	
DRO >C28-C35	41.4	25.0	04/07/2025	ND					
Total TPH C6-C35*	41.4	25.0	04/07/2025	ND	422	105	400	1.57	

Surrogate: 1-Chlorooctane 79.8 % 48.6-153

Surrogate: 1-Chlorooctadecane 73.4 % 41.9-170

Cardinal Laboratories

*=Accredited Analyte

PLEASE NOTE: Liability and Damages. Cardinal's liability and client's exclusive remedy for any claim arising, whether based in contract or tort, shall be limited to the amount paid by client for analyses. All claims, including those for negligence and any other cause whatsoever shall be deemed waived unless made in writing and received by Cardinal within thirty (30) days after completion of the applicable service. In no event shall Cardinal be liable for incidental or consequential damages, including, without limitation, business interruptions, loss of use, or loss of profits incurred by client, its subsidiaries, affiliates or successors arising out of or related to the performance of the services hereunder by Cardinal, regardless of whether such claim is based upon any of the above stated reasons or otherwise. Results relate only to the samples identified above. This report shall not be reproduced except in full with written approval of Cardinal Laboratories.

Celey D. Keene, Lab Director/Quality Manager



PHONE (575) 393-2326 ° 101 E. MARLAND ° HOBBS, NM 88240

Analytical Results For:

BTA Oil Producers
 RAY RAMOS
 104 South Pecos
 Midland TX, 79701
 Fax To: (432) 683-0312

Received: 04/04/2025
 Reported: 04/08/2025
 Project Name: MESA 9-11 CTB
 Project Number: 27378
 Project Location: NM

Sampling Date: 04/03/2025
 Sampling Type: Soil
 Sampling Condition: Cool & Intact
 Sample Received By: Tamara Oldaker

Sample ID: H - 2 @ 1' (H252018-13)

BTEx 8021B		mg/kg		Analyzed By: JH					
Analyte	Result	Reporting Limit	Analyzed	Method Blank	BS	% Recovery	True Value QC	RPD	Qualifier
Benzene*	<0.025	0.025	04/07/2025	ND	2.02	101	2.00	18.1	
Toluene*	<0.050	0.050	04/07/2025	ND	1.96	97.9	2.00	19.2	
Ethylbenzene*	<0.050	0.050	04/07/2025	ND	2.03	101	2.00	19.1	
Total Xylenes*	<0.150	0.150	04/07/2025	ND	6.34	106	6.00	19.2	
Total BTEX	<0.275	0.275	04/07/2025	ND					

Surrogate: 4-Bromofluorobenzene (PID) 102 % 71.5-134

Chloride, SM4500Cl-B		mg/kg		Analyzed By: KV					
Analyte	Result	Reporting Limit	Analyzed	Method Blank	BS	% Recovery	True Value QC	RPD	Qualifier
Chloride	304	16.0	04/08/2025	ND	416	104	400	3.77	

TPH TX1005		mg/kg		Analyzed By: MS					
Analyte	Result	Reporting Limit	Analyzed	Method Blank	BS	% Recovery	True Value QC	RPD	Qualifier
GRO C6-C12	<25.0	25.0	04/07/2025	ND	210	105	200	0.665	
DRO >C12-C28	<25.0	25.0	04/07/2025	ND	212	106	200	2.48	
DRO >C28-C35	<25.0	25.0	04/07/2025	ND					
Total TPH C6-C35*	<25.0	25.0	04/07/2025	ND	422	105	400	1.57	

Surrogate: 1-Chlorooctane 83.7 % 48.6-153

Surrogate: 1-Chlorooctadecane 76.3 % 41.9-170

Cardinal Laboratories

*=Accredited Analyte

PLEASE NOTE: Liability and Damages. Cardinal's liability and client's exclusive remedy for any claim arising, whether based in contract or tort, shall be limited to the amount paid by client for analyses. All claims, including those for negligence and any other cause whatsoever shall be deemed waived unless made in writing and received by Cardinal within thirty (30) days after completion of the applicable service. In no event shall Cardinal be liable for incidental or consequential damages, including, without limitation, business interruptions, loss of use, or loss of profits incurred by client, its subsidiaries, affiliates or successors arising out of or related to the performance of the services hereunder by Cardinal, regardless of whether such claim is based upon any of the above stated reasons or otherwise. Results relate only to the samples identified above. This report shall not be reproduced except in full with written approval of Cardinal Laboratories.

Celey D. Keene, Lab Director/Quality Manager



PHONE (575) 393-2326 ° 101 E. MARLAND ° HOBBS, NM 88240

Analytical Results For:

BTA Oil Producers
 RAY RAMOS
 104 South Pecos
 Midland TX, 79701
 Fax To: (432) 683-0312

Received: 04/04/2025
 Reported: 04/08/2025
 Project Name: MESA 9-11 CTB
 Project Number: 27378
 Project Location: NM

Sampling Date: 04/03/2025
 Sampling Type: Soil
 Sampling Condition: Cool & Intact
 Sample Received By: Tamara Oldaker

Sample ID: H - 3 @ 1' (H252018-14)

BTEx 8021B		mg/kg		Analyzed By: JH					
Analyte	Result	Reporting Limit	Analyzed	Method Blank	BS	% Recovery	True Value QC	RPD	Qualifier
Benzene*	<0.025	0.025	04/07/2025	ND	2.02	101	2.00	18.1	
Toluene*	<0.050	0.050	04/07/2025	ND	1.96	97.9	2.00	19.2	
Ethylbenzene*	<0.050	0.050	04/07/2025	ND	2.03	101	2.00	19.1	
Total Xylenes*	<0.150	0.150	04/07/2025	ND	6.34	106	6.00	19.2	
Total BTEX	<0.275	0.275	04/07/2025	ND					

Surrogate: 4-Bromofluorobenzene (PID) 107 % 71.5-134

Chloride, SM4500Cl-B		mg/kg		Analyzed By: KV						
Analyte	Result	Reporting Limit	Analyzed	Method Blank	BS	% Recovery	True Value QC	RPD	Qualifier	
Chloride	208	16.0	04/08/2025	ND	416	104	400	3.77		

TPH TX1005		mg/kg		Analyzed By: MS					
Analyte	Result	Reporting Limit	Analyzed	Method Blank	BS	% Recovery	True Value QC	RPD	Qualifier
GRO C6-C12	<25.0	25.0	04/08/2025	ND	210	105	200	0.665	
DRO >C12-C28	<25.0	25.0	04/08/2025	ND	212	106	200	2.48	
DRO >C28-C35	<25.0	25.0	04/08/2025	ND					
Total TPH C6-C35*	<25.0	25.0	04/08/2025	ND	422	105	400	1.57	

Surrogate: 1-Chlorooctane 80.7 % 48.6-153

Surrogate: 1-Chlorooctadecane 72.8 % 41.9-170

Cardinal Laboratories

*=Accredited Analyte

PLEASE NOTE: Liability and Damages. Cardinal's liability and client's exclusive remedy for any claim arising, whether based in contract or tort, shall be limited to the amount paid by client for analyses. All claims, including those for negligence and any other cause whatsoever shall be deemed waived unless made in writing and received by Cardinal within thirty (30) days after completion of the applicable service. In no event shall Cardinal be liable for incidental or consequential damages, including, without limitation, business interruptions, loss of use, or loss of profits incurred by client, its subsidiaries, affiliates or successors arising out of or related to the performance of the services hereunder by Cardinal, regardless of whether such claim is based upon any of the above stated reasons or otherwise. Results relate only to the samples identified above. This report shall not be reproduced except in full with written approval of Cardinal Laboratories.

Celey D. Keene, Lab Director/Quality Manager



PHONE (575) 393-2326 ° 101 E. MARLAND ° HOBBS, NM 88240

Analytical Results For:

BTA Oil Producers
 RAY RAMOS
 104 South Pecos
 Midland TX, 79701
 Fax To: (432) 683-0312

Received: 04/04/2025
 Reported: 04/08/2025
 Project Name: MESA 9-11 CTB
 Project Number: 27378
 Project Location: NM

Sampling Date: 04/03/2025
 Sampling Type: Soil
 Sampling Condition: Cool & Intact
 Sample Received By: Tamara Oldaker

Sample ID: H - 4 @ 1' (H252018-15)

BTEx 8021B		mg/kg		Analyzed By: JH					
Analyte	Result	Reporting Limit	Analyzed	Method Blank	BS	% Recovery	True Value QC	RPD	Qualifier
Benzene*	<0.025	0.025	04/07/2025	ND	2.02	101	2.00	18.1	
Toluene*	<0.050	0.050	04/07/2025	ND	1.96	97.9	2.00	19.2	
Ethylbenzene*	<0.050	0.050	04/07/2025	ND	2.03	101	2.00	19.1	
Total Xylenes*	<0.150	0.150	04/07/2025	ND	6.34	106	6.00	19.2	
Total BTEX	<0.275	0.275	04/07/2025	ND					

Surrogate: 4-Bromofluorobenzene (PID) 105 % 71.5-134

Chloride, SM4500Cl-B		mg/kg		Analyzed By: KV					
Analyte	Result	Reporting Limit	Analyzed	Method Blank	BS	% Recovery	True Value QC	RPD	Qualifier
Chloride	176	16.0	04/08/2025	ND	416	104	400	3.77	

TPH TX1005		mg/kg		Analyzed By: MS					
Analyte	Result	Reporting Limit	Analyzed	Method Blank	BS	% Recovery	True Value QC	RPD	Qualifier
GRO C6-C12	<25.0	25.0	04/08/2025	ND	210	105	200	0.665	
DRO >C12-C28	<25.0	25.0	04/08/2025	ND	212	106	200	2.48	
DRO >C28-C35	<25.0	25.0	04/08/2025	ND					
Total TPH C6-C35*	<25.0	25.0	04/08/2025	ND	422	105	400	1.57	

Surrogate: 1-Chlorooctane 79.5 % 48.6-153

Surrogate: 1-Chlorooctadecane 71.7 % 41.9-170

Cardinal Laboratories

*=Accredited Analyte

PLEASE NOTE: Liability and Damages. Cardinal's liability and client's exclusive remedy for any claim arising, whether based in contract or tort, shall be limited to the amount paid by client for analyses. All claims, including those for negligence and any other cause whatsoever shall be deemed waived unless made in writing and received by Cardinal within thirty (30) days after completion of the applicable service. In no event shall Cardinal be liable for incidental or consequential damages, including, without limitation, business interruptions, loss of use, or loss of profits incurred by client, its subsidiaries, affiliates or successors arising out of or related to the performance of the services hereunder by Cardinal, regardless of whether such claim is based upon any of the above stated reasons or otherwise. Results relate only to the samples identified above. This report shall not be reproduced except in full with written approval of Cardinal Laboratories.

Celey D. Keene, Lab Director/Quality Manager

PHONE (575) 393-2326 • 101 E. MARLAND • HOBBS, NM 88240

Notes and Definitions

S-04	The surrogate recovery for this sample is outside of established control limits due to a sample matrix effect.
QR-04	The RPD for the BS/BSD was outside of historical limits.
BS-3	Blank spike recovery outside of lab established statistical limits, but still within method limits. Data is not adversely affected.
ND	Analyte NOT DETECTED at or above the reporting limit
RPD	Relative Percent Difference
**	Samples not received at proper temperature of 6°C or below.
***	Insufficient time to reach temperature.
-	Chloride by SM4500Cl-B does not require samples be received at or below 6°C Samples reported on an as received basis (wet) unless otherwise noted on report

Cardinal Laboratories

*=Accredited Analyte

PLEASE NOTE: Liability and Damages. Cardinal's liability and client's exclusive remedy for any claim arising, whether based in contract or tort, shall be limited to the amount paid by client for analyses. All claims, including those for negligence and any other cause whatsoever shall be deemed waived unless made in writing and received by Cardinal within thirty (30) days after completion of the applicable service. In no event shall Cardinal be liable for incidental or consequential damages, including, without limitation, business interruptions, loss of use, or loss of profits incurred by client, its subsidiaries, affiliates or successors arising out of or related to the performance of the services hereunder by Cardinal, regardless of whether such claim is based upon any of the above stated reasons or otherwise. Results relate only to the samples identified above. This report shall not be reproduced except in full with written approval of Cardinal Laboratories.

A handwritten signature in black ink, appearing to read "C. D. Keene".

Celey D. Keene, Lab Director/Quality Manager



101 East Marland, Hobbs, NM 88240
(575) 393-2326 FAX (575) 393-2476

CHAIN-OF-CUSTODY AND ANALYSIS REQUEST

Company Name: BTA Oil Products		P.O. #:		BILL TO		ANALYSIS REQUEST																													
Project Manager: Roy Ramsey		Company: BTA																																	
Address: 104 S. PECOS		Attn:																																	
City: Midland		Address:																																	
Phone #:		Fax #:																																	
Project #: 27378		Project Owner:																																	
Project Name: Mesa 9-11 GTW		City:																																	
Project Location:		State:																																	
Sample Name: Bobby England		Phone #:																																	
FOR LAB USE ONLY		Fax #:																																	
Lab I.D.		Sample I.D.		(G)RAB OR (C)OMP.		# CONTAINERS		GROUNDWATER		WASTEWATER		SOIL		OIL		SLUDGE		OTHER:		ACID/BASE:		ICE / COOL		OTHER:		DATE		TIME		TPH		BTex		Chlorides	
1 AH-2e 1'		1 AH-2e 1'		G		K		K		X		X		X		X		X		X		X		X		X		X		X		X			
2 AH-2e 2'		2 AH-2e 2'																																	
3 AH-2e 3'		3 AH-2e 3'																																	
4 AH-2e 1'		4 AH-2e 1'																																	
5 AH-2e 1'		5 AH-2e 1'																																	
6 AH-2e 3'		6 AH-2e 3'																																	
7 AH-3e 1'		7 AH-3e 1'																																	
8 AH-3e 2'		8 AH-3e 2'																																	
9 AH-3e 3'		9 AH-3e 3'																																	

PLEASE NOTE: Liability and Damages. Cardinal's liability and client's exclusive remedy for any claim arising whether based in contract or tort, shall be limited to the amount paid by the client for the analyses. All claims, including those for negligence and any other cause whatsoever shall be deemed waived unless made in writing and received by Cardinal within 30 days after completion of the applicable service. In no event shall Cardinal be liable for incidental or consequential damages, including without limitation, business interruption, loss of use, or loss of profits incurred by client, its subsidiaries, affiliates or successors arising out of or related to the performance of services hereunder by Cardinal, regardless of whether such claim is based upon any of the above stated reasons or otherwise.

Relinquished By: **[Signature]** Date: **9-4-25** Received By: **[Signature]** Date: **9-4-25**

Relinquished By: **[Signature]** Date: **9-4-25** Received By: **[Signature]** Date: **9-4-25**

Delivered By: (Circle One) Observed Temp. °C: **4.5** Sample Condition: **Intact** CHECKED BY: **[Signature]** (Initials)

Sampler - UPS - Bus - Other: Corrected Temp. °C: **4.8** Cool ☒ Yes ☐ No Intact ☒ Yes ☐ No

Turnaround Time: **Standard** ☐ **Rush** ☒ Bacteria (only) Sample Condition: ☒ Cool ☐ Intact ☐ Observed Temp. °C: **4.8** Corrected Temp. °C: **4.8**

Thermometer ID #140 Correction Factor: **+0.3°C** **ADG** **4/8/25**

Remarks: **Email Reports to BTA**

Verbal Result: ☐ Yes ☐ No Add'l Phone #: **884-0567401.com**

All Results are emailed. Please provide Email address:



101 East Marland, Hobbs, NM 88240
(575) 393-2326 FAX (575) 393-2476

CHAIN-OF-CUSTODY AND ANALYSIS REQUEST

Company Name: BTA oil products Project Manager: Amy Barnes Address: 104 S. PECOS City: Midland State: TX Zip: 79701 Phone #: 27378 Fax #: Project #: 27378 Project Owner: Project Name: MESA 9-11 CTB Project Location: Lea County Sampler Name: Robby England FOR LAB USE ONLY		BILL TO P.O. #: Company: BTA Attn: Address: City: State: Zip: Phone #: Fax #:		ANALYSIS REQUEST			
Lab I.D. Sample I.D. 110 AH-4 e, 1' 111 AH-4 e, 1' 112 AH-4 e, 1' 113 AH-4 e, 1' 114 AH-4 e, 1' 115 AH-4 e, 1'		(G)RAB OR (C)OMP. # CONTAINERS GROUNDWATER WASTEWATER SOIL OIL SLUDGE OTHER : ACID/BASE: ICE / COOL OTHER :		MATRIX PRESERV. SAMPLING		DATE TIME TPH 1005 BTEX 8021B chlorides 4500 NO sample 4/17/25 BA	
Relinquished By: [Signature] Relinquished Date: 4/4/25 Time: 13:31 Date: Time:		Received By: [Signature] Date: Time:		Verbal Result: <input type="checkbox"/> Yes <input type="checkbox"/> No Add'l Phone #: Remarks: All Results are emailed. Please provide Email address: Email Report to B.11 Rush Standard <input checked="" type="checkbox"/> Bacteria (only) Sample Condition Thermometer ID #140 <input checked="" type="checkbox"/> Cool Intact Observed Temp. °C Correction Factor 10.3°C <input checked="" type="checkbox"/> No <input type="checkbox"/> Yes Corrected Temp. °C		Delivered By: (Circle One) Sampler - UPS - Bus - Other: Observed Temp. °C 41.5 Corrected Temp. °C 41.8 Sample Condition Cool Intact <input type="checkbox"/> Yes <input type="checkbox"/> No Checked BY: (Initials) [Signature]	



PHONE (575) 393-2326 ° 101 E. MARLAND ° HOBBS, NM 88240

May 14, 2025

RAY RAMOS

BTA Oil Producers

104 South Pecos

Midland, TX 79701

RE: MESA 9,11,13,18 CTB RELEASE

Enclosed are the results of analyses for samples received by the laboratory on 05/08/25 12:38.

Cardinal Laboratories is accredited through Texas NELAP under certificate number TX-C24-00112. Accreditation applies to drinking water, non-potable water and solid and chemical materials. All accredited analytes are denoted by an asterisk (*). For a complete list of accredited analytes and matrices visit the TCEQ website at www.tceq.texas.gov/field/qa/lab_accred_certif.html.

Cardinal Laboratories is accredited through the State of Colorado Department of Public Health and Environment for:

Method EPA 552.2	Haloacetic Acids (HAA-5)
Method EPA 524.2	Total Trihalomethanes (TTHM)
Method EPA 524.4	Regulated VOCs (V1, V2, V3)

Accreditation applies to public drinking water matrices.

This report meets NELAP requirements and is made up of a cover page, analytical results, and a copy of the original chain-of-custody. If you have any questions concerning this report, please feel free to contact me.

Sincerely,

A handwritten signature in black ink that reads "Celey D. Keene". The signature is written in a cursive style with a large, stylized 'C' and 'K'.

Celey D. Keene

Lab Director/Quality Manager



PHONE (575) 393-2326 ° 101 E. MARLAND ° HOBBS, NM 88240

Analytical Results For:

BTA Oil Producers
 RAY RAMOS
 104 South Pecos
 Midland TX, 79701
 Fax To: (432) 683-0312

Received:	05/08/2025	Sampling Date:	05/07/2025
Reported:	05/14/2025	Sampling Type:	Soil
Project Name:	MESA 9,11,13,18 CTB RELEASE	Sampling Condition:	Cool & Intact
Project Number:	NONE GIVEN	Sample Received By:	Tamara Oldaker
Project Location:	RED HILLS		

Sample ID: BH #1 @ 4' (H252753-01)

BTEX 8021B		mg/kg		Analyzed By: JH						
Analyte	Result	Reporting Limit	Analyzed	Method Blank	BS	% Recovery	True Value QC	RPD	Qualifier	
Benzene*	<0.025	0.025	05/08/2025	ND	2.08	104	2.00	2.71		
Toluene*	<0.050	0.050	05/08/2025	ND	2.19	109	2.00	2.39		
Ethylbenzene*	<0.050	0.050	05/08/2025	ND	2.18	109	2.00	2.25		
Total Xylenes*	<0.150	0.150	05/08/2025	ND	6.44	107	6.00	2.54		
Total BTEX	<0.275	0.275	05/08/2025	ND						

Surrogate: 4-Bromofluorobenzene (PID) 101 % 71.5-134

Chloride, SM4500Cl-B		mg/kg		Analyzed By: KV						
Analyte	Result	Reporting Limit	Analyzed	Method Blank	BS	% Recovery	True Value QC	RPD	Qualifier	
Chloride	176	16.0	05/08/2025	ND	416	104	400	8.00		

TPH TX1005		mg/kg		Analyzed By: MS					
Analyte	Result	Reporting Limit	Analyzed	Method Blank	BS	% Recovery	True Value QC	RPD	Qualifier
GRO C6-C12	<25.0	25.0	05/08/2025	ND	187	93.5	200	0.808	
DRO >C12-C28	<25.0	25.0	05/08/2025	ND	177	88.5	200	2.13	
DRO >C28-C35	<25.0	25.0	05/08/2025	ND					
Total TPH C6-C35*	<25.0	25.0	05/08/2025	ND	365	91.3	400	1.58	

Surrogate: 1-Chlorooctane 114 % 48.6-153

Surrogate: 1-Chlorooctadecane 125 % 41.9-170

Cardinal Laboratories

*=Accredited Analyte

PLEASE NOTE: Liability and Damages. Cardinal's liability and client's exclusive remedy for any claim arising, whether based in contract or tort, shall be limited to the amount paid by client for analyses. All claims, including those for negligence and any other cause whatsoever shall be deemed waived unless made in writing and received by Cardinal within thirty (30) days after completion of the applicable service. In no event shall Cardinal be liable for incidental or consequential damages, including, without limitation, business interruptions, loss of use, or loss of profits incurred by client, its subsidiaries, affiliates or successors arising out of or related to the performance of the services hereunder by Cardinal, regardless of whether such claim is based upon any of the above stated reasons or otherwise. Results relate only to the samples identified above. This report shall not be reproduced except in full with written approval of Cardinal Laboratories.

Celey D. Keene, Lab Director/Quality Manager



PHONE (575) 393-2326 ° 101 E. MARLAND ° HOBBS, NM 88240

Notes and Definitions

- QR-03 The RPD value for the sample duplicate or MS/MSD was outside of QC acceptance limits due to matrix interference. QC batch accepted based on LCS and/or LCSD recovery and/or RPD values.
- ND Analyte NOT DETECTED at or above the reporting limit
- RPD Relative Percent Difference
- ** Samples not received at proper temperature of 6°C or below.
- *** Insufficient time to reach temperature.
- Chloride by SM4500Cl-B does not require samples be received at or below 6°C
Samples reported on an as received basis (wet) unless otherwise noted on report

Cardinal Laboratories

*=Accredited Analyte

PLEASE NOTE: Liability and Damages. Cardinal's liability and client's exclusive remedy for any claim arising, whether based in contract or tort, shall be limited to the amount paid by client for analyses. All claims, including those for negligence and any other cause whatsoever shall be deemed waived unless made in writing and received by Cardinal within thirty (30) days after completion of the applicable service. In no event shall Cardinal be liable for incidental or consequential damages, including, without limitation, business interruptions, loss of use, or loss of profits incurred by client, its subsidiaries, affiliates or successors arising out of or related to the performance of the services hereunder by Cardinal, regardless of whether such claim is based upon any of the above stated reasons or otherwise. Results relate only to the samples identified above. This report shall not be reproduced except in full with written approval of Cardinal Laboratories.

A handwritten signature in black ink, appearing to read "Celey D. Keene".

Celey D. Keene, Lab Director/Quality Manager



BILL TO

ANALYSIS REQUEST

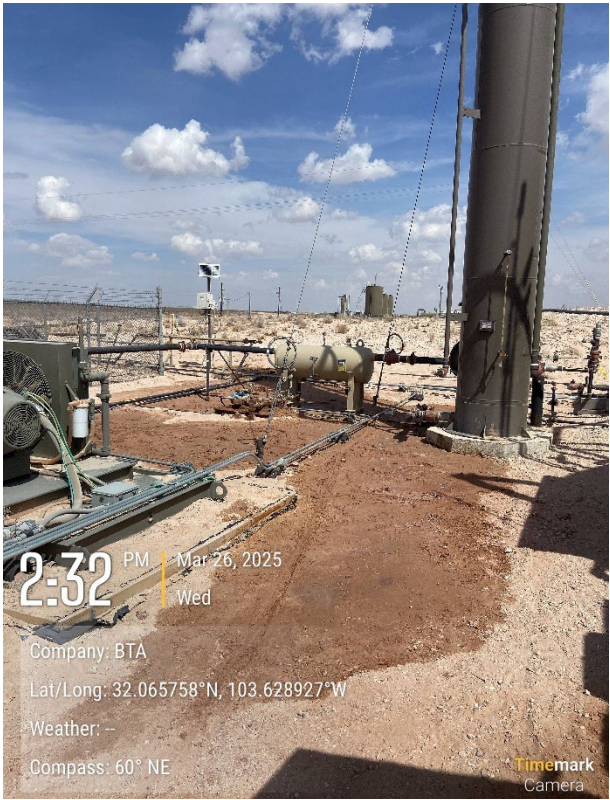
† Cardinal cannot accept verbal changes. Please email changes to celey.keene@cardinallabsnm.com

APPENDIX D

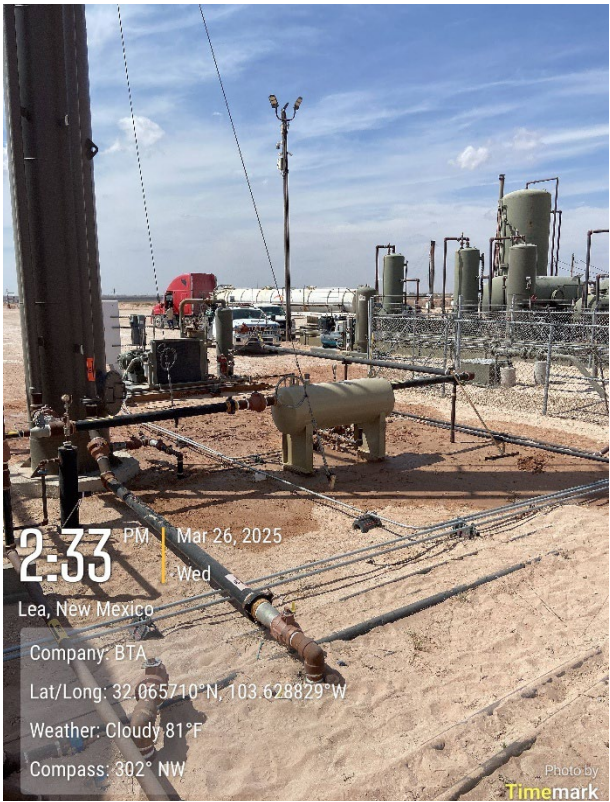
Photographic Documentation



TETRA TECH, INC. PROJECT NO. 212C-MD-03837	DESCRIPTION	View southeast of approximate release extent and production equipment.	1
	SITE NAME	Mesa 11 CTB Release	3/26/2025



TETRA TECH, INC. PROJECT NO. 212C-MD-03837	DESCRIPTION	View northeast of approximate release extent and production equipment.	2
	SITE NAME	Mesa 11 CTB Release	3/26/2025




TETRA TECH, INC. PROJECT NO. 212C-MD-03837	DESCRIPTION	View of northwest of approximate release extent and production equipment.	3
	SITE NAME	Mesa 11 CTB Release	3/26/2025



TETRA TECH, INC. PROJECT NO. 212C-MD-03837	DESCRIPTION	View north of approximate release extent and production equipment. Surface/Subsurface electrical lines.	4
	SITE NAME	Mesa 11 CTB Release	4/3/2025

North West Elevation

☉ 146°SE (T) LAT: 32.065707 LON: -103.628757 ±9ft




Mesa 9-11
03 Apr 2025, 11:17:28 AM MDT

BTA Oil Producers

TETRA TECH, INC. PROJECT NO. 212C-MD-03837	DESCRIPTION	View northwest of surface production lines near approximate release area.	5
	SITE NAME	Mesa 11 CTB Release	4/3/2025

South East Elevation

☉ 299°NW (T) LAT: 32.065646 LON: -103.628762 ±16ft



Mesa 9,11,13,18 - Release
.07 May 2025, 8:36:56 AM MDT

BTA Oil Producers

TETRA TECH, INC. PROJECT NO. 212C-MD-03837	DESCRIPTION	View southeast of marked release extent and subsurface utilities.	6
	SITE NAME	Mesa 11 CTB Release	5/7/2025

Released to Imaging: 8/6/2025 10:11:59 AM



TETRA TECH, INC. PROJECT NO. 212C-MD-03837	DESCRIPTION	View southeast of marked release extent and subsurface utilities. Surface steel and electrical lines.	7
	SITE NAME	Mesa 11 CTB Release	5/7/2025



TETRA TECH, INC. PROJECT NO. 212C-MD-03837	DESCRIPTION	View south of marked release extent and subsurface utilities. Surface steel and electrical lines.	8
	SITE NAME	Mesa 11 CTB Release	5/7/2025

Sante Fe Main Office
Phone: (505) 476-3441

General Information
Phone: (505) 629-6116

Online Phone Directory
<https://www.emnrd.nm.gov/ocd/contact-us>

State of New Mexico
Energy, Minerals and Natural Resources
Oil Conservation Division
1220 S. St Francis Dr.
Santa Fe, NM 87505

QUESTIONS

Action 488129

QUESTIONS

Operator: BTA OIL PRODUCERS, LLC 104 S Pecos Midland, TX 79701	OGRID: 260297
	Action Number: 488129
	Action Type: [C-141] Site Char./Remediation Plan C-141 (C-141-v-Plan)

QUESTIONS

Prerequisites	
Incident ID (n#)	nAPP2508742989
Incident Name	NAPP2508742989 MESA 11 CTB @ 0
Incident Type	Produced Water Release
Incident Status	Remediation Plan Received
Incident Facility	[fAPP2129922652] Mesa 9H 11H

Location of Release Source

Please answer all the questions in this group.

Site Name	Mesa 11 CTB
Date Release Discovered	03/26/2025
Surface Owner	Federal

Incident Details

Please answer all the questions in this group.

Incident Type	Produced Water Release
Did this release result in a fire or is the result of a fire	No
Did this release result in any injuries	No
Has this release reached or does it have a reasonable probability of reaching a watercourse	No
Has this release endangered or does it have a reasonable probability of endangering public health	No
Has this release substantially damaged or will it substantially damage property or the environment	No
Is this release of a volume that is or may with reasonable probability be detrimental to fresh water	No

Nature and Volume of Release

Material(s) released, please answer all that apply below. Any calculations or specific justifications for the volumes provided should be attached to the follow-up C-141 submission.

Crude Oil Released (bbls) Details	Not answered.
Produced Water Released (bbls) Details	Cause: Corrosion Other (Specify) Produced Water Released: 10 BBL Recovered: 9 BBL Lost: 1 BBL.
Is the concentration of chloride in the produced water >10,000 mg/l	Yes
Condensate Released (bbls) Details	Not answered.
Natural Gas Vented (Mcf) Details	Not answered.
Natural Gas Flared (Mcf) Details	Not answered.
Other Released Details	Not answered.
Are there additional details for the questions above (i.e. any answer containing Other, Specify, Unknown, and/or Fire, or any negative lost amounts)	Small water line failure causing release of aprox 10 bbls of PW, aprox 9 bbl recovered

Sante Fe Main Office
Phone: (505) 476-3441

General Information
Phone: (505) 629-6116

Online Phone Directory
<https://www.emnrd.nm.gov/ocd/contact-us>

State of New Mexico
Energy, Minerals and Natural Resources
Oil Conservation Division
1220 S. St Francis Dr.
Santa Fe, NM 87505

QUESTIONS, Page 2

Action 488129

QUESTIONS (continued)

Operator: BTA OIL PRODUCERS, LLC 104 S Pecos Midland, TX 79701	OGRID: 260297
	Action Number: 488129
	Action Type: [C-141] Site Char./Remediation Plan C-141 (C-141-v-Plan)

QUESTIONS

Nature and Volume of Release (continued)	
Is this a gas only submission (i.e. only significant Mcf values reported)	No, according to supplied volumes this does not appear to be a "gas only" report.
Was this a major release as defined by Subsection A of 19.15.29.7 NMAC	No
Reasons why this would be considered a submission for a notification of a major release	<i>Unavailable.</i>
<i>With the implementation of the 19.15.27 NMAC (05/25/2021), venting and/or flaring of natural gas (i.e. gas only) are to be submitted on the C-129 form.</i>	

Initial Response

The responsible party must undertake the following actions immediately unless they could create a safety hazard that would result in injury.

The source of the release has been stopped	True
The impacted area has been secured to protect human health and the environment	True
Released materials have been contained via the use of berms or dikes, absorbent pads, or other containment devices	True
All free liquids and recoverable materials have been removed and managed appropriately	True
If all the actions described above have not been undertaken, explain why	<i>Not answered.</i>

Per Paragraph (4) of Subsection B of 19.15.29.8 NMAC the responsible party may commence remediation immediately after discovery of a release. If remediation has begun, please prepare and attach a narrative of actions to date in the follow-up C-141 submission. If remedial efforts have been successfully completed or if the release occurred within a lined containment area (see Subparagraph (a) of Paragraph (5) of Subsection A of 19.15.29.11 NMAC), please prepare and attach all information needed for closure evaluation in the follow-up C-141 submission.

I hereby certify that the information given above is true and complete to the best of my knowledge and understand that pursuant to OCD rules and regulations all operators are required to report and/or file certain release notifications and perform corrective actions for releases which may endanger public health or the environment. The acceptance of a C-141 report by the OCD does not relieve the operator of liability should their operations have failed to adequately investigate and remediate contamination that pose a threat to groundwater, surface water, human health or the environment. In addition, OCD acceptance of a C-141 report does not relieve the operator of responsibility for compliance with any other federal, state, or local laws and/or regulations.

I hereby agree and sign off to the above statement	Name: Samantha Allen Title: Tetrattech Email: Samantha.allen@tetrattech.com Date: 07/23/2025
--	---

Sante Fe Main Office
Phone: (505) 476-3441

General Information
Phone: (505) 629-6116

Online Phone Directory
<https://www.emnrd.nm.gov/ocd/contact-us>

State of New Mexico
Energy, Minerals and Natural Resources
Oil Conservation Division
1220 S. St Francis Dr.
Santa Fe, NM 87505

QUESTIONS, Page 3

Action 488129

QUESTIONS (continued)

Operator: BTA OIL PRODUCERS, LLC 104 S Pecos Midland, TX 79701	OGRID: 260297
	Action Number: 488129
	Action Type: [C-141] Site Char./Remediation Plan C-141 (C-141-v-Plan)

QUESTIONS

Site Characterization	
<i>Please answer all the questions in this group (only required when seeking remediation plan approval and beyond). This information must be provided to the appropriate district office no later than 90 days after the release discovery date.</i>	
What is the shallowest depth to groundwater beneath the area affected by the release in feet below ground surface (ft bgs)	Between 51 and 75 (ft.)
What method was used to determine the depth to ground water	NM OSE iWaters Database Search
Did this release impact groundwater or surface water	No
What is the minimum distance, between the closest lateral extents of the release and the following surface areas:	
A continuously flowing watercourse or any other significant watercourse	Between 1000 (ft.) and ½ (mi.)
Any lakebed, sinkhole, or playa lake (measured from the ordinary high-water mark)	Greater than 5 (mi.)
An occupied permanent residence, school, hospital, institution, or church	Greater than 5 (mi.)
A spring or a private domestic fresh water well used by less than five households for domestic or stock watering purposes	Greater than 5 (mi.)
Any other fresh water well or spring	Greater than 5 (mi.)
Incorporated municipal boundaries or a defined municipal fresh water well field	Greater than 5 (mi.)
A wetland	Between 1 and 5 (mi.)
A subsurface mine	Greater than 5 (mi.)
An (non-karst) unstable area	Zero feet, overlying, or within area
Categorize the risk of this well / site being in a karst geology	Medium
A 100-year floodplain	Greater than 5 (mi.)
Did the release impact areas not on an exploration, development, production, or storage site	No

Remediation Plan	
<i>Please answer all the questions that apply or are indicated. This information must be provided to the appropriate district office no later than 90 days after the release discovery date.</i>	
Requesting a remediation plan approval with this submission	Yes
<i>Attach a comprehensive report demonstrating the lateral and vertical extents of soil contamination associated with the release have been determined, pursuant to 19.15.29.11 NMAC and 19.15.29.13 NMAC.</i>	
Have the lateral and vertical extents of contamination been fully delineated	Yes
Was this release entirely contained within a lined containment area	No
Soil Contamination Sampling: (Provide the highest observable value for each, in milligrams per kilograms.)	
Chloride (EPA 300.0 or SM4500 Cl B)	8400
TPH (GRO+DRO+MRO) (EPA SW-846 Method 8015M)	9830
GRO+DRO (EPA SW-846 Method 8015M)	8271
BTEX (EPA SW-846 Method 8021B or 8260B)	1.3
Benzene (EPA SW-846 Method 8021B or 8260B)	0
<i>Per Subsection B of 19.15.29.11 NMAC unless the site characterization report includes completed efforts at remediation, the report must include a proposed remediation plan in accordance with 19.15.29.12 NMAC, which includes the anticipated timelines for beginning and completing the remediation.</i>	
On what estimated date will the remediation commence	09/18/2025
On what date will (or did) the final sampling or liner inspection occur	09/21/2025
On what date will (or was) the remediation complete(d)	09/22/2025
What is the estimated surface area (in square feet) that will be reclaimed	0
What is the estimated volume (in cubic yards) that will be reclaimed	0
What is the estimated surface area (in square feet) that will be remediated	1170
What is the estimated volume (in cubic yards) that will be remediated	116
<i>These estimated dates and measurements are recognized to be the best guess or calculation at the time of submission and may (be) change(d) over time as more remediation efforts are completed.</i>	
<i>The OCD recognizes that proposed remediation measures may have to be minimally adjusted in accordance with the physical realities encountered during remediation. If the responsible party has any need to significantly deviate from the remediation plan proposed, then it should consult with the division to determine if another remediation plan submission is required.</i>	

Sante Fe Main Office
Phone: (505) 476-3441

General Information
Phone: (505) 629-6116

Online Phone Directory
<https://www.emnrd.nm.gov/ocd/contact-us>

State of New Mexico
Energy, Minerals and Natural Resources
Oil Conservation Division
1220 S. St Francis Dr.
Santa Fe, NM 87505

QUESTIONS, Page 4

Action 488129

QUESTIONS (continued)

Operator: BTA OIL PRODUCERS, LLC 104 S Pecos Midland, TX 79701	OGRID: 260297
	Action Number: 488129
	Action Type: [C-141] Site Char./Remediation Plan C-141 (C-141-v-Plan)

QUESTIONS

Remediation Plan (continued)	
<i>Please answer all the questions that apply or are indicated. This information must be provided to the appropriate district office no later than 90 days after the release discovery date.</i>	
This remediation will (or is expected to) utilize the following processes to remediate / reduce contaminants:	
<i>(Select all answers below that apply.)</i>	
(Ex Situ) Excavation and off-site disposal (i.e. dig and haul, hydrovac, etc.)	Yes
Which OCD approved facility will be used for off-site disposal	OWL LANDFILL JAL [JEG1635837366]
OR which OCD approved well (API) will be used for off-site disposal	Not answered.
OR is the off-site disposal site, to be used, out-of-state	Not answered.
OR is the off-site disposal site, to be used, an NMED facility	Not answered.
(Ex Situ) Excavation and on-site remediation (i.e. On-Site Land Farms)	Not answered.
(In Situ) Soil Vapor Extraction	Not answered.
(In Situ) Chemical processing (i.e. Soil Shredding, Potassium Permanganate, etc.)	Not answered.
(In Situ) Biological processing (i.e. Microbes / Fertilizer, etc.)	Not answered.
(In Situ) Physical processing (i.e. Soil Washing, Gypsum, Disking, etc.)	Not answered.
Ground Water Abatement pursuant to 19.15.30 NMAC	Not answered.
OTHER (Non-listed remedial process)	Not answered.
<i>Per Subsection B of 19.15.29.11 NMAC unless the site characterization report includes completed efforts at remediation, the report must include a proposed remediation plan in accordance with 19.15.29.12 NMAC, which includes the anticipated timelines for beginning and completing the remediation.</i>	
I hereby certify that the information given above is true and complete to the best of my knowledge and understand that pursuant to OCD rules and regulations all operators are required to report and/or file certain release notifications and perform corrective actions for releases which may endanger public health or the environment. The acceptance of a C-141 report by the OCD does not relieve the operator of liability should their operations have failed to adequately investigate and remediate contamination that pose a threat to groundwater, surface water, human health or the environment. In addition, OCD acceptance of a C-141 report does not relieve the operator of responsibility for compliance with any other federal, state, or local laws and/or regulations.	
I hereby agree and sign off to the above statement	Name: Samantha Allen Title: Tetrattech Email: Samantha.allen@tetrattech.com Date: 07/23/2025
<i>The OCD recognizes that proposed remediation measures may have to be minimally adjusted in accordance with the physical realities encountered during remediation. If the responsible party has any need to significantly deviate from the remediation plan proposed, then it should consult with the division to determine if another remediation plan submission is required.</i>	

Sante Fe Main Office
Phone: (505) 476-3441

General Information
Phone: (505) 629-6116

Online Phone Directory
<https://www.emnrd.nm.gov/ocd/contact-us>

State of New Mexico
Energy, Minerals and Natural Resources
Oil Conservation Division
1220 S. St Francis Dr.
Santa Fe, NM 87505

QUESTIONS, Page 5

Action 488129

QUESTIONS (continued)

Operator: BTA OIL PRODUCERS, LLC 104 S Pecos Midland, TX 79701	OGRID: 260297
	Action Number: 488129
	Action Type: [C-141] Site Char./Remediation Plan C-141 (C-141-v-Plan)

QUESTIONS

Deferral Requests Only	
Only answer the questions in this group if seeking a deferral upon approval this submission. Each of the following items must be confirmed as part of any request for deferral of remediation.	
Requesting a deferral of the remediation closure due date with the approval of this submission	No

Sante Fe Main Office
Phone: (505) 476-3441

General Information
Phone: (505) 629-6116

Online Phone Directory
<https://www.emnrd.nm.gov/ocd/contact-us>

State of New Mexico
Energy, Minerals and Natural Resources
Oil Conservation Division
1220 S. St Francis Dr.
Santa Fe, NM 87505

QUESTIONS, Page 6

Action 488129

QUESTIONS (continued)

Operator: BTA OIL PRODUCERS, LLC 104 S Pecos Midland, TX 79701	OGRID: 260297
	Action Number: 488129
	Action Type: [C-141] Site Char./Remediation Plan C-141 (C-141-v-Plan)

QUESTIONS

Sampling Event Information	
Last sampling notification (C-141N) recorded	{Unavailable.}

Remediation Closure Request	
Only answer the questions in this group if seeking remediation closure for this release because all remediation steps have been completed.	
Requesting a remediation closure approval with this submission	No

Sante Fe Main Office
Phone: (505) 476-3441

General Information
Phone: (505) 629-6116

Online Phone Directory
<https://www.emnrd.nm.gov/ocd/contact-us>

State of New Mexico
Energy, Minerals and Natural Resources
Oil Conservation Division
1220 S. St Francis Dr.
Santa Fe, NM 87505

CONDITIONS

Action 488129

CONDITIONS

Operator: BTA OIL PRODUCERS, LLC 104 S Pecos Midland, TX 79701	OGRID: 260297
	Action Number: 488129
	Action Type: [C-141] Site Char./Remediation Plan C-141 (C-141-v-Plan)

CONDITIONS

Created By	Condition	Condition Date
rhamlet	The remediation plan is conditionally approved. The release area will need confirmation floor/sidewall samples representing no more than 200 ft2. All samples must be analyzed for all constituents listed in Table I of 19.15.29.12 NMAC. Due to "medium karst," the site will need to be remediated to the strictest closure criteria from Table 1 of 19.15.29 NMAC. All sidewall samples should be taken from the sidewall of the excavation. Please make sure that the edge of the release extent is accurately defined. Sidewall/edge samples should be delineated/excavated to 600 mg/kg for chlorides and 100 mg/kg for TPH to define the edge of the release. If fluids reached tanks/equipment, sample up against tanks/equipment to ensure contaminants didn't go underneath. If the removal of contaminants under tanks/equipment could cause a major facility deconstruction, a formal deferral request will need to be submitted to the OCD Permitting Portal.	8/6/2025
rhamlet	The work will need to be completed in 90 days after the report has been reviewed.	8/6/2025