



June 25, 2025

New Mexico Oil Conservation Division
1220 South St. Francis Drive
Santa Fe, New Mexico 87505

**Re: Closure Request
Burton Flat Deep Unit 35 Facility 1
Incident Number nAPP2512565999
Eddy County, New Mexico**

To Whom It May Concern:

Ensolum, LLC (Ensolum), on behalf of Devon Energy Production Company, LP (Devon), has prepared this *Closure Request* to document assessment and soil sampling activities performed at the Burton Flat Deep Unit 35 Facility 1 (Site) in Unit C, Section 35, Township 20 South, Range 28 East, in Eddy County, New Mexico (Figure 1). The purpose of the Site assessment and soil sampling activities was to assess for the presence or absence of impacts to soil resulting from a release of produced water within lined containment at the Site. Based on field observations, field screening activities, and laboratory analytical results, Devon is submitting this *Closure Request* and requesting closure for Incident Number nAPP2512565999.

SITE DESCRIPTION AND RELEASE SUMMARY

The Site is located in Eddy County, New Mexico (32.5335812°, -104.1502386°) and is associated with oil and gas exploration and production operations on Federal Land managed by the Bureau of Land Management (BLM).

On May 4, 2025, Devon personnel discovered fluids inside containment, and it was determined a pinhole leak developed on a water leg of a separator and had released 9 barrels (bbls) of produced water inside the lined secondary containment. A vacuum truck was immediately dispatched to the Site to recover free-standing fluids; 9 bbls of produced water were recovered from within the lined containment. Devon reported the release to the New Mexico Oil Conservation Division (NMOCD) on a Release Notification Form C-141 (Form C-141) on May 8, 2025. The release was assigned Incident Number nAPP2512565999. A 48-hour advance notice of a liner inspection was provided via web portal to the NMOCD office on June 19, 2025. A liner integrity inspection was conducted by Ensolum personnel on June 23, 2025, and the liner was determined to be intact and had the ability to contain the release in question. The Form C-141 can be referenced within the NMOCD Incident Portal.

SITE CHARACTERIZATION AND CLOSURE CRITERIA

The Site was characterized to assess applicability of Table I, Closure Criteria for Soils Impacted by a Release, of Title 19, Chapter 15, Part 29 (19.15.29) of the New Mexico Administrative Code (NMAC). Results from the characterization desktop review are presented on page 3 of the Form C-141, Site Assessment/Characterization. Potential Site receptors are identified on Figure 1.

According to the New Mexico Office of the State Engineer (NMOSE), the closest permitted groundwater well with depth to groundwater data is CP 01589 POD1, located approximately 849 feet northwest of the Site. The well had a reported depth to groundwater of 70 feet below ground surface (bgs) and a total depth of 109 feet bgs. There are no regional or Site-specific hydrogeological conditions, such as shallow surface water, known surficial karst features, wetlands, or vegetation to suggest the Site is conducive to shallow groundwater. All wells used for depth to groundwater determination are presented on Figure 1. The referenced well record is included in Appendix A.

The closest continuously flowing or significant watercourse to the Site is an intermittent dry wash, located approximately 2,470 feet northwest of the Site. The Site is greater than 200 feet from a lakebed, sinkhole, or playa lake and greater than 300 feet from an occupied residence, school, hospital, institution, church, or wetland. The Site is greater than 1,000 feet to a freshwater well or spring and is not within a 100-year floodplain or overlying a subsurface mine. The Site is underlain by unstable geology (high potential karst designation area). Site receptors are identified on Figure 1.

Based on the results of the Site Characterization, the following NMOCD Table I Closure Criteria (Closure Criteria) apply:

- Benzene: 10 milligrams per kilogram (mg/kg)
- Benzene, toluene, ethylbenzene, and total xylenes (BTEX): 50 mg/kg
- Total petroleum hydrocarbons (TPH): 100 mg/kg
- Chloride: 600 mg/kg

SITE ASSESSMENT ACTIVITIES

On May 5, 2025, Site assessment activities were conducted to evaluate the release extent based on information provided on the Form C-141 and visual observations. On June 23, 2025, Ensolum personnel completed a liner integrity inspection, and it was determined the liner remained intact. The Site Diagram is depicted on Figure 2. Photographs were taken during the liner integrity inspection activities, and a photographic log is included in Appendix B

CLOSURE REQUEST

Following the liner integrity inspection and delineation sampling at the Site, it was determined the release was contained laterally and vertically by the lined secondary containment and 9 bbls of produced water were recovered during initial response activities. Based on initial response efforts and a lack of visual evidence indicating the release breached the containment liner, it has been determined soil impacts are not present at the Site as associated with this release. In addition, waste-containing soil was not documented and as such, reclamation is not required for this release. Actions completed to-date have been protective of human health, the environment, and groundwater. Devon respectfully requests closure for Incident Number nAPP2512565999.

Burton Flat Deep Unit 35 Facility 1

If you have any questions or comments, please contact Ms. Ashley Giovengo at (575) 988-0055 or agiovengo@ensolum.com.

Sincerely,
Ensolum, LLC



Ashley Giovengo
Associate Principal



Daniel R. Moir, PG
Senior Managing Geologist

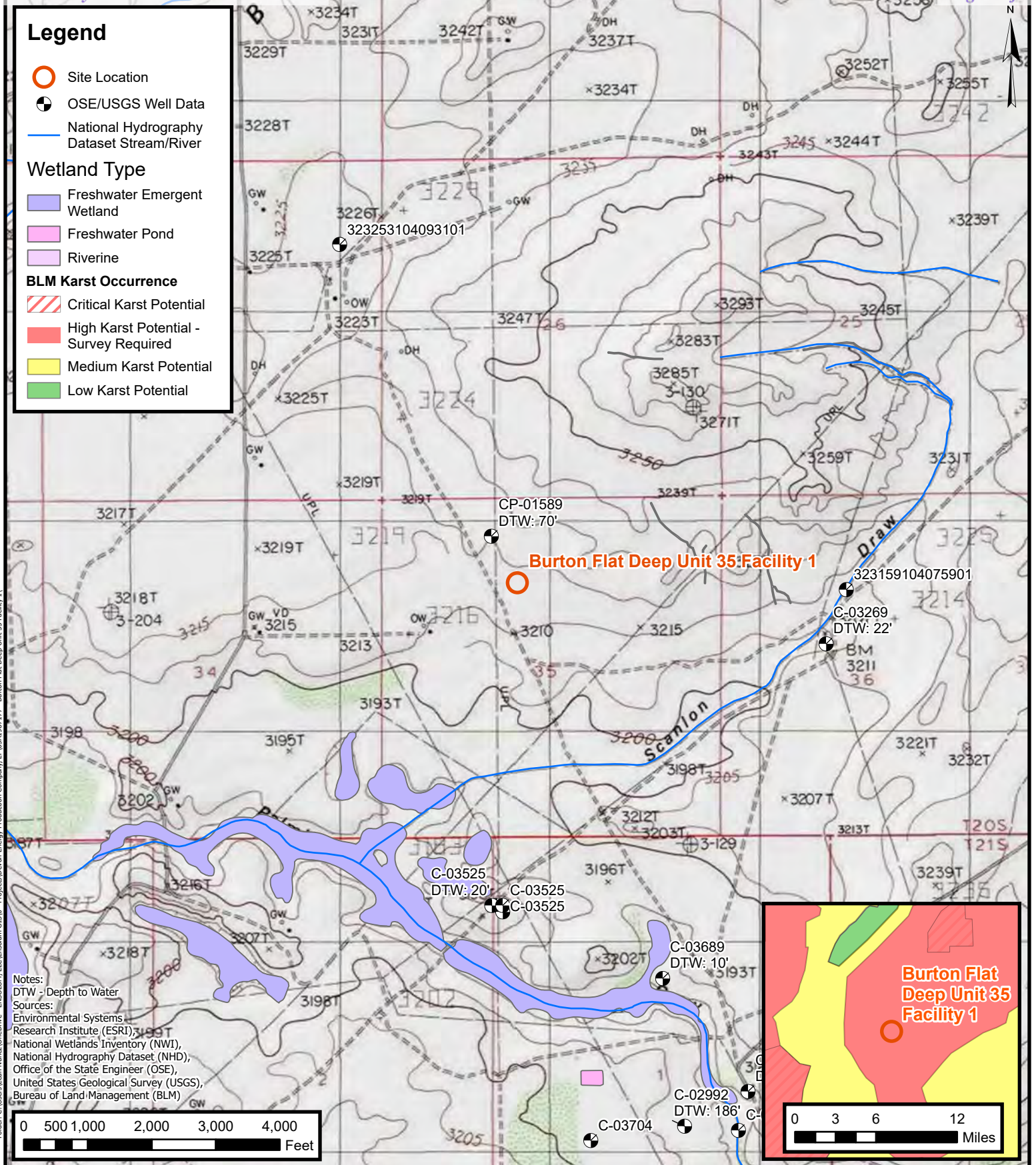
cc: Jim Raley, Devon
BLM

Appendices:



Figure 1	Site Receptor Map
Figure 2	Site Diagram
Appendix A	Well log and Record
Appendix B	Photographic Log
Appendix C	NMOCD Correspondence

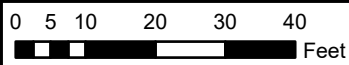
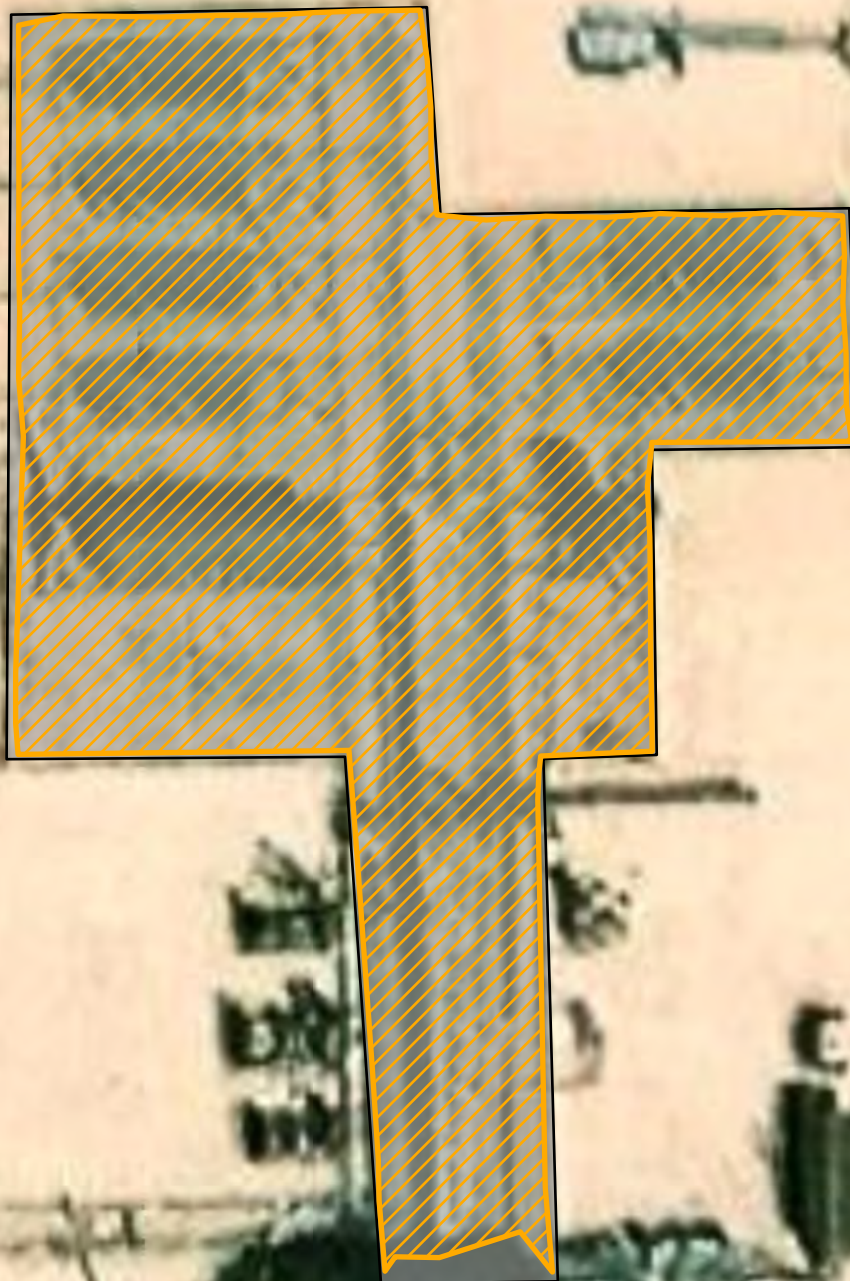


FIGURES



Legend

-  Liner
-  Release Extent



Sources: Environmental Systems Research Institute (ESRI)



Site Diagram

Devon Energy Production Company, LP
Burton Flat Deep Unit 35 Facility 1
Incident Number: nAPP2512565999
Unit C, Section 35, T 20S, R 28E
Eddy County, New Mexico

FIGURE
2



APPENDIX A

Well Log and Record



WELL RECORD & LOG

OFFICE OF THE STATE ENGINEER

www.ose.state.nm.us

1. GENERAL AND WELL LOCATION	OSE POD NUMBER (WELL NUMBER) CP-1589				OSE FILE NUMBER(S)			
	WELL OWNER NAME(S) Winston Ballard				PHONE (OPTIONAL)			
	WELL OWNER MAILING ADDRESS 1819-2 N Canal				CITY Carlsbad		STATE NM	
					ZIP 88220			
	WELL LOCATION (FROM GPS)	DEGREES LATITUDE	MINUTES 32	SECONDS 32	N	* ACCURACY REQUIRED: ONE TENTH OF A SECOND		
		LONGITUDE	104	9	5.54	W	* DATUM REQUIRED: WGS 84	
DESCRIPTION RELATING WELL LOCATION TO STREET ADDRESS AND COMMON LANDMARKS - PLSS (SECTION, TOWNSHIP, RANGE) WHERE AVAILABLE About two miles south of Burton Flat Rd.								
2. DRILLING & CASING INFORMATION	LICENSE NUMBER WD-1348		NAME OF LICENSED DRILLER Clinton E Taylor			NAME OF WELL DRILLING COMPANY Taylor Water Well Service		
	DRILLING STARTED 3/15/2016	DRILLING ENDED 3/16/2016	DEPTH OF COMPLETED WELL (FT) 109	BORE HOLE DEPTH (FT) 112	DEPTH WATER FIRST ENCOUNTERED (FT) 70			
	COMPLETED WELL IS: <input type="checkbox"/> ARTESIAN <input type="checkbox"/> DRY HOLE <input checked="" type="checkbox"/> SHALLOW (UNCONFINED)				STATIC WATER LEVEL IN COMPLETED WELL (FT) 37			
	DRILLING FLUID: <input checked="" type="checkbox"/> AIR <input type="checkbox"/> MUD				ADDITIVES - SPECIFY:			
	DRILLING METHOD: <input checked="" type="checkbox"/> ROTARY <input type="checkbox"/> HAMMER <input type="checkbox"/> CABLE TOOL <input type="checkbox"/> OTHER - SPECIFY:							
	DEPTH (feet bgl)		BORE HOLE DIAM (inches)	CASING MATERIAL AND/OR GRADE (include each casing string, and note sections of screen)	CASING CONNECTION TYPE	CASING INSIDE DIAM. (inches)	CASING WALL THICKNESS (inches)	SLOT SIZE (inches)
	FROM	TO						
	+2	89	9 7/8	SCH 40 PVC	Glue	6	SCH 40	
	89	109	9 7/8	SCH 40 PVC	Glue	6	SCH 40	.050
3. ANNULAR MATERIAL	DEPTH (feet bgl)		BORE HOLE DIAM. (inches)	LIST ANNULAR SEAL MATERIAL AND GRAVEL PACK SIZE-RANGE BY INTERVAL	AMOUNT (cubic feet)	METHOD OF PLACEMENT		
	FROM	TO						
	0	20	9 7/8	20% Bentonite Grout	2 Sacks	Tremie		
	20	109	9 7/8	3/8" Pea Gravel	2 Yards	Dump		

FOR OSE INTERNAL USE

WR-20 WELL RECORD & LOG (Version 10/29/15)

FILE NUMBER	CP-1589	POD NUMBER	1	TRN NUMBER	584032
LOCATION	T20S R28E Sec 35 121				PAGE 1 OF 2

1. HYDROGEOLOGIC LOG OF WELL

5. TEST: RIG SUPERVISION

6. SIGNATURE

WR-20 WELL RECORD & LOG (Version 06/08/2012)



APPENDIX C

Photographic Log



Photographic Log

Devon Energy Production Company, LP
Burton Flat Deep Unit 35 Facility 1
nAPP2512565999



Photograph 1
Description: Site sign
View: NA
Date: 5/4/2025



Photograph 2
Description: Spill area
View: South
Date: 5/7/2025



Photograph 3
Description: Spill area
View: East
Date: 5/7/2025

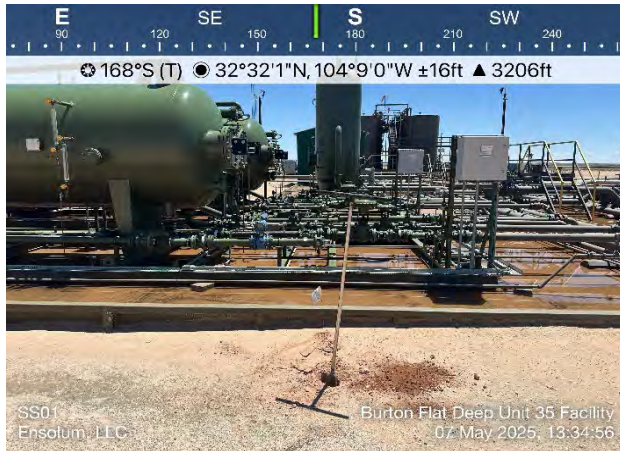


Photograph 4
Description: Spill area
View: South
Date: 5/7/2025



Photographic Log

Devon Energy Production Company, LP
Burton Flat Deep Unit 35 Facility 1
nAPP2512565999



Photograph 5
Description: Spill area
View: South

Date: 5/7/2025



Photograph 6
Description: Spill area
View: West

Date: 5/7/2025



Photograph 7
Description: Liner Inspection
View: East

Date: 6/23/2025



Photograph 8
Description: Liner Inspection
View: North

Date: 6/23/2025



Photographic Log

Devon Energy Production Company, LP
Burton Flat Deep Unit 35 Facility 1
nAPP2512565999



Photograph 9
Description: Liner Inspection
View: North

Date: 6/23/2025



Photograph 10
Description: Liner Inspection
View: East

Date: 6/23/2025



Photograph 11
Description: Liner Inspection
View: Southeast

Date: 6/23/2025



Photograph 12
Description: Liner Inspection
View: Northwest

Date: 6/23/2025



Photographic Log

Devon Energy Production Company, LP
Burton Flat Deep Unit 35 Facility 1
nAPP2512565999



Photograph 13
Description: Liner Inspection
View: Northeast



Photograph 14
Description: Liner Inspection
View: North



Photograph 15
Description: Liner Inspection
View: North



Photograph 16
Description: Liner Inspection
View: North



APPENDIX C

NMOCD Correspondence

Sante Fe Main Office
Phone: (505) 476-3441

General Information
Phone: (505) 629-6116

Online Phone Directory
<https://www.emnrd.nm.gov/ocd/contact-us>

State of New Mexico
Energy, Minerals and Natural Resources
Oil Conservation Division
1220 S. St Francis Dr.
Santa Fe, NM 87505

QUESTIONS

Action 476877

QUESTIONS

Operator: DEVON ENERGY PRODUCTION COMPANY, LP 333 West Sheridan Ave. Oklahoma City, OK 73102	OGRID: 6137
	Action Number: 476877
	Action Type: [NOTIFY] Notification Of Liner Inspection (C-141L)

QUESTIONS

Prerequisites	
Incident ID (n#)	nAPP2512565999
Incident Name	NAPP2512565999 BURTON FLAT DEEP UNIT 35 FACILITY 1 @ 0
Incident Type	Produced Water Release
Incident Status	Initial C-141 Approved
Incident Facility	[fAPP2301240772] BURTON FLAT DEEP UNIT 35 FACILITY 1

Location of Release Source	
Site Name	BURTON FLAT DEEP UNIT 35 FACILITY 1
Date Release Discovered	05/04/2025
Surface Owner	Federal

Liner Inspection Event Information	
<i>Please answer all the questions in this group.</i>	
What is the liner inspection surface area in square feet	11,341
Have all the impacted materials been removed from the liner	Yes
Liner inspection date pursuant to Subparagraph (a) of Paragraph (5) of Subsection A of 19.15.29.11 NMAC	06/23/2025
Time liner inspection will commence	09:00 AM
Please provide any information necessary for observers to liner inspection	Please contact Jenna Hinkle @ 202-569-0491
Please provide any information necessary for navigation to liner inspection site	32.5335812, -104.1502386

Sante Fe Main Office
Phone: (505) 476-3441

General Information
Phone: (505) 629-6116

Online Phone Directory
<https://www.emnrd.nm.gov/ocd/contact-us>

State of New Mexico
Energy, Minerals and Natural Resources
Oil Conservation Division
1220 S. St Francis Dr.
Santa Fe, NM 87505

CONDITIONS

Action 476877

CONDITIONS

Operator: DEVON ENERGY PRODUCTION COMPANY, LP 333 West Sheridan Ave. Oklahoma City, OK 73102	OGRID: 6137
	Action Number: 476877
	Action Type: [NOTIFY] Notification Of Liner Inspection (C-141L)

CONDITIONS

Created By	Condition	Condition Date
jralej	Failure to notify the OCD of liner inspections including any changes in date/time per the requirements of 19.15.29.11.A(5)(a)(ii) NMAC, may result in the inspection not being accepted.	6/19/2025

Sante Fe Main Office
Phone: (505) 476-3441

General Information
Phone: (505) 629-6116

Online Phone Directory
<https://www.emnrd.nm.gov/ocd/contact-us>

State of New Mexico
Energy, Minerals and Natural Resources
Oil Conservation Division
1220 S. St Francis Dr.
Santa Fe, NM 87505

QUESTIONS

Action 478751

QUESTIONS

Operator: DEVON ENERGY PRODUCTION COMPANY, LP 333 West Sheridan Ave. Oklahoma City, OK 73102	OGRID: 6137
	Action Number: 478751
	Action Type: [C-141] Remediation Closure Request C-141 (C-141-v-Closure)

QUESTIONS

Prerequisites	
Incident ID (n#)	nAPP2512565999
Incident Name	NAPP2512565999 BURTON FLAT DEEP UNIT 35 FACILITY 1 @ 0
Incident Type	Produced Water Release
Incident Status	Remediation Closure Report Received
Incident Facility	[fAPP2301240772] BURTON FLAT DEEP UNIT 35 FACILITY 1

Location of Release Source*Please answer all the questions in this group.*

Site Name	BURTON FLAT DEEP UNIT 35 FACILITY 1
Date Release Discovered	05/04/2025
Surface Owner	Federal

Incident Details*Please answer all the questions in this group.*

Incident Type	Produced Water Release
Did this release result in a fire or is the result of a fire	No
Did this release result in any injuries	No
Has this release reached or does it have a reasonable probability of reaching a watercourse	No
Has this release endangered or does it have a reasonable probability of endangering public health	No
Has this release substantially damaged or will it substantially damage property or the environment	No
Is this release of a volume that is or may with reasonable probability be detrimental to fresh water	No

Nature and Volume of Release*Material(s) released, please answer all that apply below. Any calculations or specific justifications for the volumes provided should be attached to the follow-up C-141 submission.*

Crude Oil Released (bbls) Details	Not answered.
Produced Water Released (bbls) Details	Cause: Corrosion Flow Line - Production Produced Water Released: 9 BBL Recovered: 9 BBL Lost: 0 BBL.
Is the concentration of chloride in the produced water >10,000 mg/l	Yes
Condensate Released (bbls) Details	Not answered.
Natural Gas Vented (Mcf) Details	Not answered.
Natural Gas Flared (Mcf) Details	Not answered.
Other Released Details	Not answered.
Are there additional details for the questions above (i.e. any answer containing Other, Specify, Unknown, and/or Fire, or any negative lost amounts)	Water leg of separator developed a pinhole leak. Fluids were initially thought to have been released to pad surface, but upon subsequent inspection, fluids were found to have been fully contained in secondary containment.

Sante Fe Main Office
Phone: (505) 476-3441

General Information
Phone: (505) 629-6116

Online Phone Directory
<https://www.emnrd.nm.gov/ocd/contact-us>

State of New Mexico
Energy, Minerals and Natural Resources
Oil Conservation Division
1220 S. St Francis Dr.
Santa Fe, NM 87505

QUESTIONS, Page 2

Action 478751

QUESTIONS (continued)

Operator: DEVON ENERGY PRODUCTION COMPANY, LP 333 West Sheridan Ave. Oklahoma City, OK 73102	OGRID: 6137
	Action Number: 478751
	Action Type: [C-141] Remediation Closure Request C-141 (C-141-v-Closure)

QUESTIONS

Nature and Volume of Release (continued)	
Is this a gas only submission (i.e. only significant Mcf values reported)	No, according to supplied volumes this does not appear to be a "gas only" report.
Was this a major release as defined by Subsection A of 19.15.29.7 NMAC	No
Reasons why this would be considered a submission for a notification of a major release	<i>Unavailable.</i>
<i>With the implementation of the 19.15.27 NMAC (05/25/2021), venting and/or flaring of natural gas (i.e. gas only) are to be submitted on the C-129 form.</i>	

Initial Response

The responsible party must undertake the following actions immediately unless they could create a safety hazard that would result in injury.

The source of the release has been stopped	True
The impacted area has been secured to protect human health and the environment	True
Released materials have been contained via the use of berms or dikes, absorbent pads, or other containment devices	True
All free liquids and recoverable materials have been removed and managed appropriately	True
If all the actions described above have not been undertaken, explain why	<i>Not answered.</i>

Per Paragraph (4) of Subsection B of 19.15.29.8 NMAC the responsible party may commence remediation immediately after discovery of a release. If remediation has begun, please prepare and attach a narrative of actions to date in the follow-up C-141 submission. If remedial efforts have been successfully completed or if the release occurred within a lined containment area (see Subparagraph (a) of Paragraph (5) of Subsection A of 19.15.29.11 NMAC), please prepare and attach all information needed for closure evaluation in the follow-up C-141 submission.

I hereby certify that the information given above is true and complete to the best of my knowledge and understand that pursuant to OCD rules and regulations all operators are required to report and/or file certain release notifications and perform corrective actions for releases which may endanger public health or the environment. The acceptance of a C-141 report by the OCD does not relieve the operator of liability should their operations have failed to adequately investigate and remediate contamination that pose a threat to groundwater, surface water, human health or the environment. In addition, OCD acceptance of a C-141 report does not relieve the operator of responsibility for compliance with any other federal, state, or local laws and/or regulations.

I hereby agree and sign off to the above statement	Name: James Raley Title: EHS Professional Email: jim.raley@dvni.com Date: 06/25/2025
--	---

Sante Fe Main Office
Phone: (505) 476-3441

General Information
Phone: (505) 629-6116

Online Phone Directory
<https://www.emnrd.nm.gov/ocd/contact-us>

State of New Mexico
Energy, Minerals and Natural Resources
Oil Conservation Division
1220 S. St Francis Dr.
Santa Fe, NM 87505

QUESTIONS, Page 3

Action 478751

QUESTIONS (continued)

Operator: DEVON ENERGY PRODUCTION COMPANY, LP 333 West Sheridan Ave. Oklahoma City, OK 73102	OGRID: 6137
	Action Number: 478751
	Action Type: [C-141] Remediation Closure Request C-141 (C-141-v-Closure)

QUESTIONS

Site Characterization	
<i>Please answer all the questions in this group (only required when seeking remediation plan approval and beyond). This information must be provided to the appropriate district office no later than 90 days after the release discovery date.</i>	
What is the shallowest depth to groundwater beneath the area affected by the release in feet below ground surface (ft bgs)	Between 51 and 75 (ft.)
What method was used to determine the depth to ground water	NM OSE iWaters Database Search
Did this release impact groundwater or surface water	No
What is the minimum distance, between the closest lateral extents of the release and the following surface areas:	
A continuously flowing watercourse or any other significant watercourse	Between 1000 (ft.) and ½ (mi.)
Any lakebed, sinkhole, or playa lake (measured from the ordinary high-water mark)	Between ½ and 1 (mi.)
An occupied permanent residence, school, hospital, institution, or church	Between 1 and 5 (mi.)
A spring or a private domestic fresh water well used by less than five households for domestic or stock watering purposes	Between 500 and 1000 (ft.)
Any other fresh water well or spring	Between 500 and 1000 (ft.)
Incorporated municipal boundaries or a defined municipal fresh water well field	Greater than 5 (mi.)
A wetland	Between ½ and 1 (mi.)
A subsurface mine	Greater than 5 (mi.)
An (non-karst) unstable area	Between 1 and 5 (mi.)
Categorize the risk of this well / site being in a karst geology	High
A 100-year floodplain	Between 1 and 5 (mi.)
Did the release impact areas not on an exploration, development, production, or storage site	No

Remediation Plan	
<i>Please answer all the questions that apply or are indicated. This information must be provided to the appropriate district office no later than 90 days after the release discovery date.</i>	
Requesting a remediation plan approval with this submission	Yes
<i>Attach a comprehensive report demonstrating the lateral and vertical extents of soil contamination associated with the release have been determined, pursuant to 19.15.29.11 NMAC and 19.15.29.13 NMAC.</i>	
Have the lateral and vertical extents of contamination been fully delineated	Yes
Was this release entirely contained within a lined containment area	Yes
<i>Per Subsection B of 19.15.29.11 NMAC unless the site characterization report includes completed efforts at remediation, the report must include a proposed remediation plan in accordance with 19.15.29.12 NMAC, which includes the anticipated timelines for beginning and completing the remediation.</i>	
On what estimated date will the remediation commence	06/23/2025
On what date will (or did) the final sampling or liner inspection occur	06/23/2025
On what date will (or was) the remediation complete(d)	06/23/2025
What is the estimated surface area (in square feet) that will be remediated	0
What is the estimated volume (in cubic yards) that will be remediated	0
<i>These estimated dates and measurements are recognized to be the best guess or calculation at the time of submission and may (be) change(d) over time as more remediation efforts are completed.</i>	
<i>The OCD recognizes that proposed remediation measures may have to be minimally adjusted in accordance with the physical realities encountered during remediation. If the responsible party has any need to significantly deviate from the remediation plan proposed, then it should consult with the division to determine if another remediation plan submission is required.</i>	

Sante Fe Main Office
Phone: (505) 476-3441

General Information
Phone: (505) 629-6116

Online Phone Directory
<https://www.emnrd.nm.gov/ocd/contact-us>

State of New Mexico
Energy, Minerals and Natural Resources
Oil Conservation Division
1220 S. St Francis Dr.
Santa Fe, NM 87505

QUESTIONS, Page 4

Action 478751

QUESTIONS (continued)

Operator: DEVON ENERGY PRODUCTION COMPANY, LP 333 West Sheridan Ave. Oklahoma City, OK 73102	OGRID: 6137
	Action Number: 478751
	Action Type: [C-141] Remediation Closure Request C-141 (C-141-v-Closure)

QUESTIONS

Remediation Plan (continued)	
<i>Please answer all the questions that apply or are indicated. This information must be provided to the appropriate district office no later than 90 days after the release discovery date.</i>	
This remediation will (or is expected to) utilize the following processes to remediate / reduce contaminants:	
<i>(Select all answers below that apply.)</i>	
Is (or was) there affected material present needing to be removed	No
Is (or was) there a power wash of the lined containment area (to be) performed	Yes
OTHER (Non-listed remedial process)	Not answered.
<i>Per Subsection B of 19.15.29.11 NMAC unless the site characterization report includes completed efforts at remediation, the report must include a proposed remediation plan in accordance with 19.15.29.12 NMAC, which includes the anticipated timelines for beginning and completing the remediation.</i>	
I hereby certify that the information given above is true and complete to the best of my knowledge and understand that pursuant to OCD rules and regulations all operators are required to report and/or file certain release notifications and perform corrective actions for releases which may endanger public health or the environment. The acceptance of a C-141 report by the OCD does not relieve the operator of liability should their operations have failed to adequately investigate and remediate contamination that pose a threat to groundwater, surface water, human health or the environment. In addition, OCD acceptance of a C-141 report does not relieve the operator of responsibility for compliance with any other federal, state, or local laws and/or regulations.	
I hereby agree and sign off to the above statement	Name: James Raley Title: EHS Professional Email: jim.raley@dv.com Date: 06/25/2025
<i>The OCD recognizes that proposed remediation measures may have to be minimally adjusted in accordance with the physical realities encountered during remediation. If the responsible party has any need to significantly deviate from the remediation plan proposed, then it should consult with the division to determine if another remediation plan submission is required.</i>	

Sante Fe Main Office
Phone: (505) 476-3441

General Information
Phone: (505) 629-6116

Online Phone Directory
<https://www.emnrd.nm.gov/ocd/contact-us>

State of New Mexico
Energy, Minerals and Natural Resources
Oil Conservation Division
1220 S. St Francis Dr.
Santa Fe, NM 87505

QUESTIONS, Page 6

Action 478751

QUESTIONS (continued)

Operator: DEVON ENERGY PRODUCTION COMPANY, LP 333 West Sheridan Ave. Oklahoma City, OK 73102	OGRID: 6137
	Action Number: 478751
	Action Type: [C-141] Remediation Closure Request C-141 (C-141-v-Closure)

QUESTIONS

Liner Inspection Information	
Last liner inspection notification (C-141L) recorded	476877
Liner inspection date pursuant to Subparagraph (a) of Paragraph (5) of Subsection A of 19.15.29.11 NMAC	06/23/2025
Was all the impacted materials removed from the liner	Yes
What was the liner inspection surface area in square feet	11341

Remediation Closure Request	
<i>Only answer the questions in this group if seeking remediation closure for this release because all remediation steps have been completed.</i>	
Requesting a remediation closure approval with this submission	Yes
Have the lateral and vertical extents of contamination been fully delineated	Yes
Was this release entirely contained within a lined containment area	Yes
What was the total surface area (in square feet) remediated	0
What was the total volume (cubic yards) remediated	0
Summarize any additional remediation activities not included by answers (above)	Liner inspected
<i>The responsible party must attach information demonstrating they have complied with all applicable closure requirements and any conditions or directives of the OCD. This demonstration should be in the form of a comprehensive report (in .pdf format) including a scaled site map, sampling diagrams, relevant field notes, photographs of any excavation prior to backfilling, laboratory data including chain of custody documents of final sampling, and a narrative of the remedial activities. Refer to 19.15.29.12 NMAC.</i>	
I hereby certify that the information given above is true and complete to the best of my knowledge and understand that pursuant to OCD rules and regulations all operators are required to report and/or file certain release notifications and perform corrective actions for releases which may endanger public health or the environment. The acceptance of a C-141 report by the OCD does not relieve the operator of liability should their operations have failed to adequately investigate and remediate contamination that pose a threat to groundwater, surface water, human health or the environment. In addition, OCD acceptance of a C-141 report does not relieve the operator of responsibility for compliance with any other federal, state, or local laws and/or regulations. The responsible party acknowledges they must substantially restore, reclaim, and re-vegetate the impacted surface area to the conditions that existed prior to the release or their final land use in accordance with 19.15.29.13 NMAC including notification to the OCD when reclamation and re-vegetation are complete.	
I hereby agree and sign off to the above statement	Name: James Raley Title: EHS Professional Email: jim.raley@dv.com Date: 06/25/2025

Sante Fe Main Office
Phone: (505) 476-3441

General Information
Phone: (505) 629-6116

Online Phone Directory
<https://www.emnrd.nm.gov/ocd/contact-us>

State of New Mexico
Energy, Minerals and Natural Resources
Oil Conservation Division
1220 S. St Francis Dr.
Santa Fe, NM 87505

CONDITIONS

Action 478751

CONDITIONS

Operator: DEVON ENERGY PRODUCTION COMPANY, LP 333 West Sheridan Ave. Oklahoma City, OK 73102	OGRID: 6137
	Action Number: 478751
	Action Type: [C-141] Remediation Closure Request C-141 (C-141-v-Closure)

CONDITIONS

Created By	Condition	Condition Date
rhamlet	We have received your Remediation Closure Report for Incident #NAPP2512565999 BURTON FLAT DEEP UNIT 35 FACILITY 1, thank you. This Remediation Closure Report is approved.	8/6/2025