



November 13, 2025

New Mexico Oil Conservation Division

New Mexico Energy, Minerals, and Natural Resources Department
1220 South St. Francis Drive
Santa Fe, New Mexico 87505

Re: Remediation Report and Closure Request

San Juan 28-4 Unit 26A
Rio Arriba County, New Mexico
Hilcorp Energy Company
NMOCD Incident Number: nAPP2502156424

To Whom it May Concern:

Ensolum, LLC (Ensolum), on behalf of Hilcorp Energy Company (Hilcorp), presents this *Remediation Report and Closure Request* associated with a release at the San Juan 28-4 Unit 26A natural gas production well (Site). The Site is located on federal land managed by the United States Forest Service (USFS) in Unit I, Section 18, Township 28 North, Range 4 West in Rio Arriba County, New Mexico (Figure 1).

SITE BACKGROUND

On January 21, 2025, Hilcorp personnel discovered a release of 24 barrels (bbls) of condensate and 18 bbls of produced water at the Site. During a routine Audio, Visual, and Olfactory (AVO) inspection, a Hilcorp operator observed stained soil surrounding the condensate above-ground storage tank (AST). Upon further inspection a corrosion hole at the bottom of the AST was discovered to be the source of the release. The operator then shut off the oil dump line and gauged the tank, which was found to be empty. Fluids did not migrate horizontally outside of the secondary containment; however, no fluids were recovered.

Hilcorp submitted the *Notification of Release* to the New Mexico Oil Conservation Division (NMOCD) on January 21, 2025, and the Site was assigned NMOCD Incident number nAPP2502156424. Hilcorp also notified the USFS and the Bureau of Land Management (BLM) on January 21, 2025. Details regarding all previous sampling/delineation efforts and presentation of the Site characterization information, including a sensitive receptor and geology/hydrogeology review, are summarized in the July 2025 *Revised Remediation Work Plan*.

SITE CHARACTERIZATION AND CLOSURE CRITERIA

As presented in the July 1, 2025 *Revised Remediation Work Plan*, the following Closure Criteria for constituents of concern (COCs) have been applied to the Site:

- Benzene: 10 milligrams per kilogram (mg/kg)
- Benzene, toluene, ethylbenzene, and xylenes (BTEX): 50 mg/kg
- Total petroleum hydrocarbons (TPH) as a combination of gasoline range organics (GRO), diesel range organics (DRO), and motor oil range organics (MRO): 2,500 mg/kg

- GRO+DRO: 1,000 mg/kg
- Chloride: 10,000 mg/kg

EXCAVATION AND CONFIRMATION SOIL SAMPLING ACTIVITIES

Because of the areal extent of impacts, volume of impacted soil, and remote location of the Site, soil shredding was chosen as the remediation technique to address impacted soil at the Site. Soil shredding is an ex-situ and on-Site treatment of impacted soil through which impacted material is chemically treated using a chemical oxidant (generally hydrogen peroxide) applied to the soil. Impacted material is excavated from the ground using standard construction techniques and placed onto a soil screening unit using a special shredding bucket. The impacted soil is conveyed by the screening unit and chemical treatment is applied simultaneously. The treated soil is then placed into discrete 50 cubic yard stockpiles and allowed to process for 24 to 48 hours in order for the oxidant to degrade the petroleum hydrocarbon contaminants in the soil.

Based on delineation activities previously performed at the Site, impacted soil was excavated and treated as stated above and was stockpiled in the areas on the well pad. As soil was removed, the excavation sidewalls and floors were field screened using a photoionization detector (PID). Once field screening indicated impacted soil had been removed, 5-point composite samples were collected from the sidewalls and floor of the excavation at a frequency of one sample per 200 square feet. The 5-point composite samples were collected by placing five equivalent aliquots of soil into a resealable plastic bag and homogenizing the samples by thoroughly mixing. The 5-point composite samples were collected into laboratory-provided jars and immediately placed on ice. Additionally, four discrete surface soil samples SS01 through SS04, were collected from outside of the excavation extent to confirm the lateral delineation of potential impacts at the Site. Notifications were provided to the NMOCD prior to sampling activities and are attached as Appendix A.

Samples were submitted to Envirotech Laboratory for analysis of BTEX following United States Environmental Protection Agency (EPA) Method 8021 and TPH following EPA Method 8015. Analytical results from the excavation indicated concentrations of TPH and BTEX were compliant with NMOCD Table I Closure Criteria in all confirmation and lateral delineation soil samples. Analytical results from the September 2025 sampling events indicated impacted soil was successfully removed, and all floor and sidewalls were in compliance with the applicable Closure Criteria. Delineation sample results are summarized in Table 1, with sample locations presented on Figure 2. Excavation sample results are summarized in Table 2, with sample locations presented on Figure 2.

In total, approximately 600 cubic yards of impacted soil was removed from the excavation and treated through soil shredding processes as described below. Complete laboratory analytical reports are attached as Appendix B. Photographs taken by Ensolum during the excavation work are included in Appendix C.

SOIL SHREDDING STOCKPILE AND VADOSE ZONE SOIL SAMPLING ACTIVITIES

Once treated (as described above), 5-point composite samples were collected for analysis from each 50 cubic yard stockpile (SP01 through SP12). Individual aliquots for the 5-point composite samples were collected using an excavator. The excavator dug at least 2 feet into the stockpile on four sides to collect four aliquots and into the top of the stockpile at least 2 feet to collect the fifth aliquot for the composite sample. The aliquots were placed into a resealable plastic bag and homogenized by thoroughly mixing. Samples were submitted to Envirotech for TPH and BTEX analysis. Based on analytical results, all treated stockpile samples were in compliance with the applicable NMOCD Table I Closure Criteria. Soil sample results are summarized in Table 2, with complete laboratory analytical reports also included in Appendix B.

Once the treated stockpile soil was removed from the ground surface and placed back into the excavation as backfill, vadose zone soil from below the treatment areas were sampled to assess if petroleum hydrocarbon constituents had leached into the subsurface during the treatment process. A 5-point composite soil sample was collected from beneath the treatment stockpile areas at an approved frequency of one sample per 1,500 square feet, as specified by the NMOCD. Each composite sample was collected from the ground surface to a maximum depth of 1-foot below ground surface (bgs), with locations shown on Figure 3. Samples VZ01 through VZ08 were collected using the manner described above and also submitted for TPH and BTEX analysis. Analytical results from all vadose zone samples indicated concentrations of TPH and BTEX were compliant with the NMOCD reclamation requirement (100 mg/kg of TPH). Soil sample results are summarized in Table 3, with complete laboratory analytical reports attached in Appendix B.

CONCLUSIONS AND CLOSURE REQUEST

Corrective actions and soil sampling activities were conducted at the Site to address the release discovered on January 21, 2025. Laboratory analytical results from confirmation soil samples, collected from the final extents of the excavation, indicated all COC concentrations were compliant with the Site Closure Criteria, and no further remediation is required. Additionally, all soil samples collected from the treated stockpiles and the vadose zone below the treatment stockpiles were also compliant with the applicable Site Closure Criteria and/or reclamation requirement. The corrective action initiated by Hilcorp has mitigated impacts at this Site and these remedial actions have been protective of human health, the environment, and groundwater. As such, Hilcorp respectfully request closure for Incident Number nAPP2502156424.

We appreciate the opportunity to provide this document to the NMOCD. If you should have any questions or comments regarding this document, please contact the undersigned.

Sincerely,
Ensolum, LLC



Eric Carroll
Project Geologist
(303) 842-9578
ecarroll@ensolum.com



Stuart Hyde
Senior Managing Geologist
(970) 903-1607
shyde@ensolum.com

Attachments:

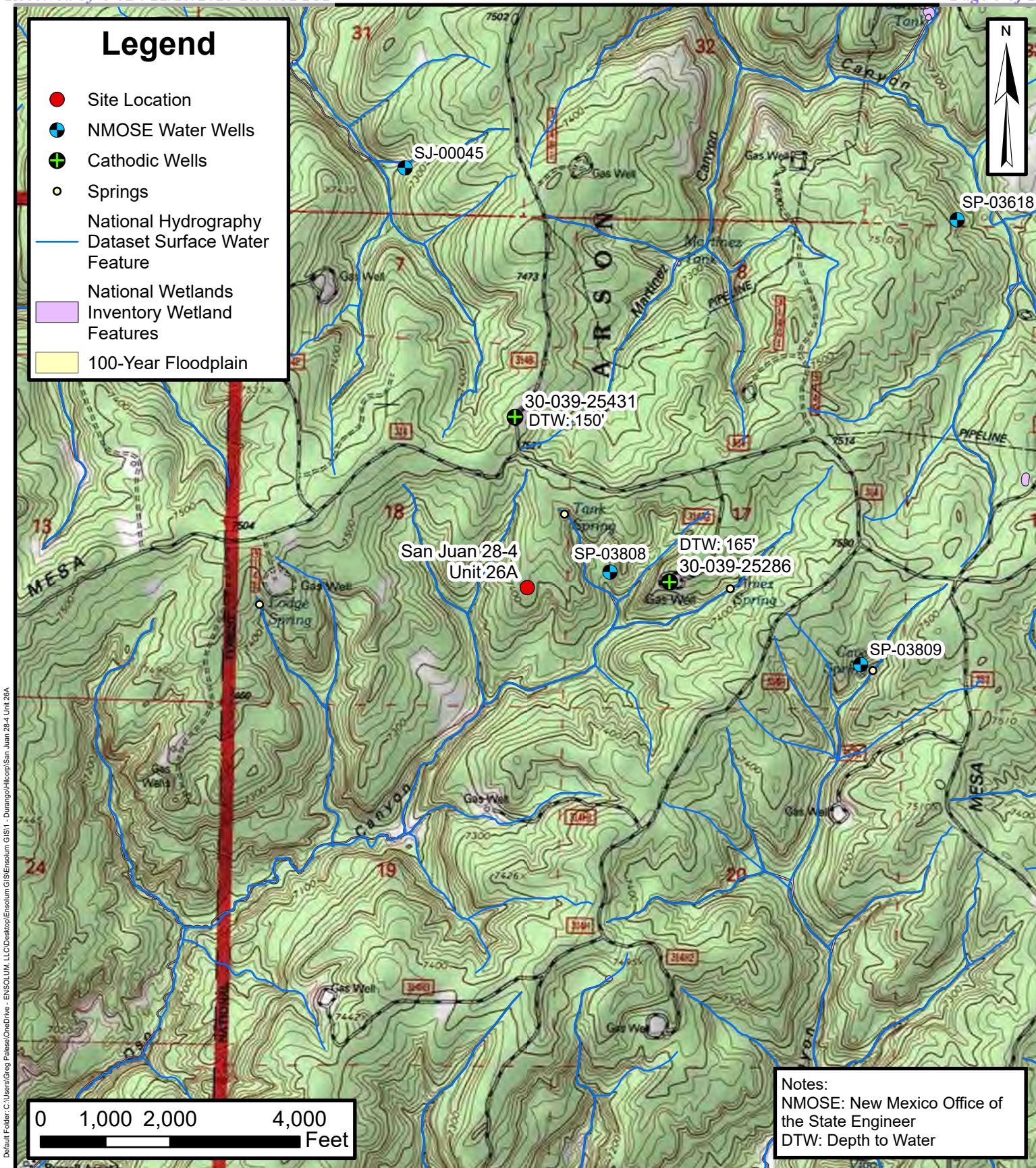
Figure 1: Site Receptor Map
Figure 2: Delineation Soil Samples Map
Figure 3: Confirmation Soil Samples Map

Table 1: Delineation Soil Sample Analytical Results
Table 2: Confirmation Soil Sample Analytical Results
Table 3: Treatment Area Vadose Zone Soil Sample Analytical Results

Appendix A: Agency Correspondence
Appendix B: Laboratory Analytical Reports
Appendix C: Photographic Log



FIGURES



Site Receptor Map

San Juan 28-4 Unit 26A
 Hilcorp Energy Company

36.65901,-107.28456
 Rio Arriba County, New Mexico

FIGURE
1

Legend

- Delineation Soil Sample in Compliance with NMOCD Closure Criteria
- Delineation Soil Sample Exceeding NMOCD Closure Criteria



HA01@0-1'
BTEX:217
GRO+DRO:4,830
TPH:4,830

HA01@6'
BTEX:747
GRO+DRO:10,450
TPH:10,450

PH01@7.5'
BTEX:849
GRO+DRO:6,104
TPH:6,104

Notes:

BTEX: Total Benzene, Toluene, Ethylbenzene, and Xylenes in Milligrams per Kilogram(mg/Kg)
GRO+DRO: Diesel Range and Gasoline Range Organics (mg/Kg)
TPH: Total Petroleum Hydrocarbons (mg/Kg)
Reporting Limit
Bold: Indicates Results Exceed NMOCD Closure Criteria
NMOCD: New Mexico Oil Conservation Division

0 10 20 40
Feet




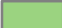

Delineation Soil Samples Map

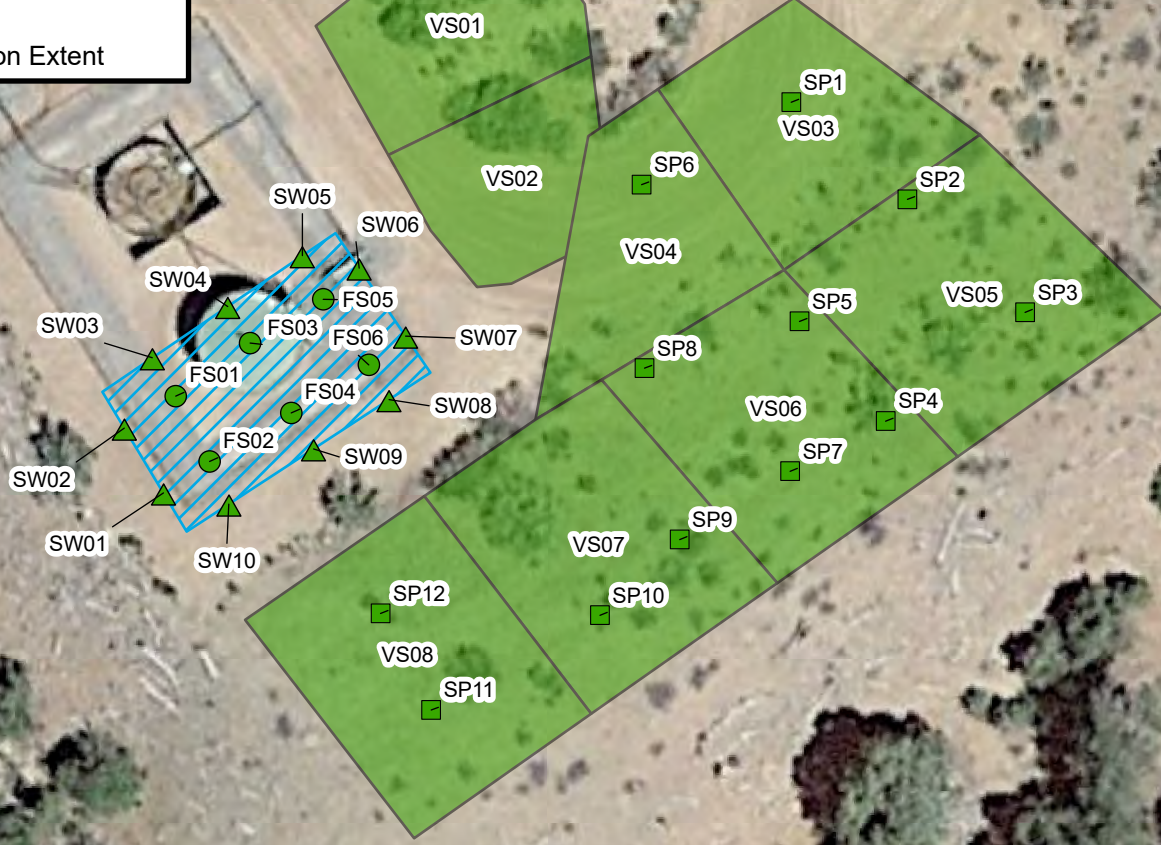
San Juan 28-4 Unit 26A
Hilcorp Energy Company
36.65901,-107.28456
Rio Arriba County, New Mexico

FIGURE
2



Legend

-  Stockpile Confirmation Sample in Compliance with NMOCD Closure Criteria
-  Excavation Floor Sample in Compliance with NMOCD Closure Criteria
-  Excavation Sidewall Sample in Compliance with NMOCD Closure Criteria
-  Treatment Area - Vadose Zone Soil Sample in Compliance with NMOCD Closure Criteria
-  Excavation Extent



0 15 30 60
Feet

Notes:
NMOCD: New Mexico Oil Conservation Division



Confirmation Soil Samples Map

San Juan 28-4 Unit 26A
Hilcorp Energy Company
36.65901, -107.28456
Rio Arriba County, New Mexico

FIGURE
3



TABLES

TABLE 1
DELINEATION SOIL SAMPLE ANALYTICAL RESULTS
 San Juan 28-4 Unit 26A
 Hilcorp Energy Company
 Rio Arriba County, New Mexico

Sample Identification	Date	Depth (feet bgs)	PID (ppm)	Benzene (mg/kg)	Toluene (mg/kg)	Ethylbenzene (mg/kg)	Xylenes (mg/kg)	Total BTEX (mg/kg)	TPH GRO (mg/kg)	TPH DRO (mg/kg)	TPH MRO (mg/kg)	GRO+DRO (mg/kg)	Total TPH (mg/kg)	Chloride (mg/kg)
NMOCOD Closure Criteria for Soils Impacted by a Release			NE	10	NE	NE	NE	50	NE	NE	NE	1,000	2,500	10,000
Delineation Soil Samples														
HA01@0-1'	1/31/2025	0 - 1	1,996	1.7	130	19	66	217	4,500	330	<46.0	4,830	4,830	<60.0
HA01@6'	1/31/2025	6.0	1,904	17	560	40.0	130	747	10,000	450	<46.0	10,450	10,450	<60.0
PH01@7.5'	2/27/2025	7.5	1,579	29	649	38.9	132	849	5,470	634	<50.0	6,104	6,104	<20.0
PH02@2'	2/27/2025	2.0	23.1	<0.0250	0.0271	<0.0250	<0.0250	0.0271	<20.0	<25.0	<50.0	<50.0	<50.0	<20.0
PH02@6.5'	2/27/2025	6.5	7.6	<0.0250	<0.0250	<0.0250	<0.0250	<0.0250	<20.0	<25.0	<50.0	<50.0	<20.0	<20.0
PH03@6'	2/27/2025	6.0	3.4	<0.0250	<0.0250	<0.0250	<0.0250	<0.0250	<20.0	<25.0	<50.0	<50.0	<50.0	<20.0
PH03@8'	2/27/2025	8.0	1.6	<0.0250	<0.0250	<0.0250	<0.0250	<0.0250	<20.0	<25.0	<50.0	<50.0	<50.0	<20.0
PH04@4'	2/27/2025	4.0	38.6	<0.0250	<0.0250	<0.0250	<0.0250	<0.0250	<20.0	<25.0	<50.0	<50.0	<50.0	<20.0
PH04@7'	2/27/2025	7.0	50.1	<0.0250	<0.0250	<0.0250	<0.0250	<0.0250	<20.0	<25.0	<50.0	<50.0	<50.0	<20.0
PH05@2'	2/27/2025	2.0	7.3	<0.0250	<0.0250	<0.0250	<0.0250	<0.0250	<20.0	<25.0	<50.0	<50.0	<50.0	<20.0
PH05@6'	2/27/2025	6.0	34.9	<0.0250	<0.0250	<0.0250	<0.0250	<0.0250	<20.0	<25.0	<50.0	<50.0	<50.0	<20.0
BH01@15'	3/25/2025	15.0	1,919	<0.025	0.063	<0.050	0.29	0.353	72	15	<50	87	87	<60
BH01@20'	3/25/2025	20.0	2,358	<0.024	<0.047	<0.047	<0.095	<0.095	<4.7	<9.7	<48	<48	<48	<60
BH01@25'	3/25/2025	25.0	677.2	<0.024	<0.048	<0.048	<0.096	<0.096	<4.8	10	<47	10	10	<60
BH02@20'	3/25/2025	20.0	13.5	<0.025	<0.049	<0.049	<0.098	<0.098	<4.9	<9.3	<47	<47	<47	<60
BH02@30'	3/25/2025	30.0	7.8	<0.024	<0.048	<0.048	<0.095	<0.095	<4.8	27	<47	27	27	<60
BH03@10'	3/25/2025	10.0	23.6	<0.025	<0.049	<0.049	<0.099	<0.099	<4.9	23	<48	23	23	<60
BH03@35'	3/25/2025	35.0	2.0	<0.025	<0.049	<0.049	<0.098	<0.098	<4.9	<9.5	<48	<48	<48	<60
BH04@15'	3/25/2025	15.0	48.5	<0.024	<0.048	<0.048	<0.096	<0.096	<4.8	<9.7	<48	<48	<48	<60
BH04@35'	3/26/2025	35.0	5.8	<0.024	<0.049	<0.049	<0.097	<0.097	<4.9	<9.7	<49	<49	<49	<60
BH05@30'	3/26/2025	30.0	12.3	<0.023	<0.047	<0.047	<0.093	<0.093	<4.7	20	<48	20	20	<60
BH05@35'	3/26/2025	35.0	15.1	<0.024	<0.049	<0.049	<0.098	<0.098	<4.9	13	<45	13	13	<60
BH06@5'	3/26/2025	5.0	38.2	<0.024	<0.048	<0.048	<0.096	<0.096	<4.8	26	<47	26	26	<60
BH06@25'	3/26/2025	25.0	6.9	<0.024	<0.048	<0.048	<0.097	<0.097	<4.8	<9.4	<47	<47	<47	<60
Discrete Lateral Delineation Surface Soil Samples														
SS01	9/23/2025	0-0.5'	0.5	<0.0250	<0.0250	<0.0250	<0.0250	<0.0250	<20.0	<25.0	<50.0	<25.0	<50.0	NA
SS02	9/23/2025	0-0.5'	0.2	<0.0250	<0.0250	<0.0250	<0.0250	<0.0250	<20.0	<25.0	<50.0	<25.0	<50.0	NA
SS03	9/23/2025	0-0.5'	0.8	<0.0250	<0.0250	<0.0250	<0.0250	<0.0250	<20.0	37.2	<50.0	<25.0	37.2	NA
SS04	9/23/2025	0-0.5'	0.6	<0.0250	<0.0250	<0.0250	<0.0250	<0.0250	<20.0	<25.0	<50.0	<25.0	<50.0	NA

Notes:

bgs: Below ground surface

BTEX: Benzene, Toluene, Ethylbenzene, and Xylenes

mg/kg: Milligrams per kilogram

NA: Not Analyzed

NE: Not Established

NMOCOD: New Mexico Oil Conservation Division

PID: Photoionization detector

ppm: Parts per million

GRO: Gasoline Range Organics

DRO: Diesel Range Organics

MRO: Motor Oil/Lube Oil Range Organics

TPH: Total Petroleum Hydrocarbon

': Feet

<: Indicates result less than the stated laboratory reporting limit (RL)

Concentrations in **bold** and shaded exceed the New Mexico Oil Conservation Division Table I Closure Criteria for Soils Impacted by a Release



TABLE 2
CONFIRMATION SOIL SAMPLE ANALYTICAL RESULTS
 San Juan 28-4 Unit 26A
 Hilcorp Energy Company
 Rio Arriba County, New Mexico

Sample Identification	Date	Depth (feet bgs)	PID (ppm)	Benzene (mg/kg)	Toluene (mg/kg)	Ethylbenzene (mg/kg)	Xylenes (mg/kg)	Total BTEX (mg/kg)	TPH GRO (mg/kg)	TPH DRO (mg/kg)	TPH MRO (mg/kg)	GRO+DRO (mg/kg)	Total TPH (mg/kg)
NMOCD Closure Criteria for Soils Impacted by a Release			NE	10	NE	NE	NE	50	NE	NE	NE	1,000	2,500
Excavation Floor Confirmation Samples													
FS01	9/22/2025	8'	39.6	<0.0250	0.0660	<0.0250	<0.0250	0.0660	<20.0	<25.0	<50.0	<25.0	<50.0
FS02	9/22/2025	8'	17.8	<0.0250	<0.0250	<0.0250	<0.0250	<0.0250	<20.0	<25.0	<50.0	<25.0	<50.0
FS03	9/22/2025	12'	3,325	<0.0250	1.60	0.326	1.48	3.41	80.5	28.7	<50.0	109	109
FS04	9/22/2025	12'	2,962	0.0553	4.71	0.907	3.74	9.41	202	46.6	<50.0	249	249
FS05	9/22/2025	12'	2,050	0.303	2.24	0.415	1.81	4.77	90.9	<25.0	<50.0	90.9	90.9
FS06	9/22/2025	12'	3,161	<0.0250	1.01	0.351	1.56	2.92	89.1	26.6	<50.0	116	116
Excavation Sidewall Confirmation Samples													
SW01	9/22/2025	0-8'	8.7	<0.0250	<0.0250	<0.0250	<0.0250	<0.0250	<20.0	<25.0	<50.0	<25.0	<50.0
SW02	9/22/2025	0-8'	29.5	<0.0250	<0.0250	<0.0250	<0.0250	<0.0250	<20.0	<25.0	<50.0	<25.0	<50.0
SW03	9/22/2025	0-8'	27.0	<0.0250	<0.0250	<0.0250	<0.0250	<0.0250	<20.0	<25.0	<50.0	<25.0	<50.0
SW04	9/22/2025	0-12'	103.1	<0.0250	<0.0250	<0.0250	<0.0250	<0.0250	<20.0	<25.0	<50.0	<25.0	<50.0
SW05	9/22/2025	0-12'	263.5	<0.0250	0.298	0.0390	0.200	0.537	<20.0	<25.0	<50.0	<25.0	<50.0
SW06	9/22/2025	0-12'	32.4	<0.0250	<0.0250	<0.0250	<0.0250	<0.0250	<20.0	<25.0	<50.0	<25.0	<50.0
SW07	9/22/2025	0-12'	73.3	<0.0250	0.0296	<0.0250	<0.0250	0.0296	<20.0	<25.0	<50.0	<25.0	<50.0
SW08	9/22/2025	0-12'	181.3	<0.0250	<0.0250	<0.0250	<0.0250	<0.0250	<20.0	<25.0	<50.0	<25.0	<50.0
SW09	9/22/2025	0-12'	29.6	<0.0250	<0.0250	<0.0250	<0.0250	<0.0250	<20.0	<25.0	<50.0	<25.0	<50.0
SW10	9/22/2025	0-8'	8.2	<0.0250	<0.0250	<0.0250	<0.0250	<0.0250	<20.0	<25.0	<50.0	<25.0	<50.0
Stockpile Confirmation Samples													
SP01	9/25/2025	NA	58.1	<0.0250	0.0793	<0.0250	0.137	0.216	<20.0	<25.0	<50.0	<25.0	<50.0
SP02	9/25/2025	NA	65.4	<0.0250	0.0880	<0.0250	0.177	0.265	27.7	<25.0	<50.0	27.7	27.7
SP03	9/25/2025	NA	113.7	<0.0250	<0.0250	<0.0250	<0.0250	<0.0250	<20.0	<25.0	<50.0	<25.0	<50.0
SP04	9/25/2025	NA	109.7	<0.0250	0.139	0.0275	0.246	0.413	22.6	<25.0	<50.0	22.6	22.6
SP05	9/25/2025	NA	150.9	<0.0250	0.0300	<0.0250	<0.0250	0.0300	<20.0	<25.0	<50.0	<25.0	<50.0
SP06	9/25/2025	NA	134.8	<0.0250	0.0601	<0.0250	0.115	0.175	<20.0	<25.0	<50.0	<25.0	<50.0
SP07	9/25/2025	NA	122.1	<0.0250	0.0490	<0.0250	0.221	0.270	20.7	<25.0	<50.0	20.7	20.7
SP08	9/25/2025	NA	168.7	<0.0250	0.0294	<0.0250	0.131	0.160	<20.0	<25.0	<50.0	<25.0	<50.0
SP09	9/25/2025	NA	161.4	<0.0250	0.102	0.0266	0.383	0.512	38.9	<25.0	<50.0	38.9	38.9
SP10	9/25/2025	NA	133.6	<0.0250	0.0478	<0.0250	0.167	0.215	22.3	<25.0	<50.0	22.3	22.3
SP11	9/25/2025	NA	90.6	<0.0250	<0.0250	<0.0250	0.132	0.132	<20.0	<25.0	<50.0	<25.0	<50.0
SP12	9/25/2025	NA	301.7	<0.0250	<0.0250	<0.0250	0.104	0.104	<20.0	<25.0	<50.0	<25.0	<50.0

Notes:

bgs: Below ground surface

BTEX: Benzene, Toluene, Ethylbenzene, and Xylenes

mg/kg: Milligrams per kilogram

NE: Not Established

NMOCD: New Mexico Oil Conservation Division

PID: Photoionization detector

ppm: Parts per million

NA: Not applicable

GRO: Gasoline Range Organics

DRO: Diesel Range Organics

MRO: Motor Oil/Lube Oil Range Organics

TPH: Total Petroleum Hydrocarbon

": Feet

<: Indicates result less than the stated laboratory reporting limit (RL)

Concentrations in **bold** and shaded exceed the New Mexico Oil Conservation Division Table I Closure Criteria for Soils Impacted by a Release



TABLE 3
TREATMENT AREA VADOSE ZONE SOIL SAMPLE ANALYTICAL RESULTS

San Juan 28-4 Unit 26A
Hilcorp Energy Company
Rio Arriba County, New Mexico

Sample Identification	Date	Depth (feet bgs)	PID (ppm)	Benzene (mg/kg)	Toluene (mg/kg)	Ethylbenzene (mg/kg)	Xylenes (mg/kg)	Total BTEX (mg/kg)	TPH GRO (mg/kg)	TPH DRO (mg/kg)	TPH MRO (mg/kg)	Total TPH (mg/kg)
NMOCD Reclamation Requirement			NE	10	NE	NE	NE	50	NE	NE	NE	100
VZ01	10/9/2025	0 - 1	0.1	<0.0250	<0.0250	<0.0250	<0.0250	<0.0250	<20.0	<25.0	<50.0	<50.0
VZ02	10/9/2025	0 - 1	0.0	<0.0250	<0.0250	<0.0250	<0.0250	<0.0250	<20.0	<25.0	<50.0	<50.0
VZ03	10/9/2025	0 - 1	0.0	<0.0250	<0.0250	<0.0250	<0.0250	<0.0250	<20.0	<25.0	<50.0	<50.0
VZ04	10/9/2025	0 - 1	0.0	<0.0250	<0.0250	<0.0250	<0.0250	<0.0250	<20.0	<25.0	<50.0	<50.0
VZ05	10/9/2025	0 - 1	0.4	<0.0250	<0.0250	<0.0250	<0.0250	<0.0250	<20.0	<25.0	<50.0	<50.0
VZ06	10/9/2025	0 - 1	0.2	<0.0250	<0.0250	<0.0250	<0.0250	<0.0250	<20.0	<25.0	<50.0	<50.0
VZ07	10/9/2025	0 - 1	0.0	<0.0250	<0.0250	<0.0250	<0.0250	<0.0250	<20.0	<25.0	<50.0	<50.0
VZ08	10/9/2025	0 - 1	0.0	<0.0250	<0.0250	<0.0250	<0.0250	<0.0250	<20.0	<25.0	98.4	98.4

Notes:

bgs: Below ground surface

BTEX: Benzene, Toluene, Ethylbenzene, and Xylenes

mg/kg: Milligrams per kilogram

NE: Not Established

NMOCD: New Mexico Oil Conservation Division

PID: Photoionization detector

ppm: Parts per million

GRO: Gasoline Range Organics

DRO: Diesel Range Organics

MRO: Motor Oil/Lube Oil Range Organics

TPH: Total Petroleum Hydrocarbon

': Feet

<: Indicates result less than the stated laboratory reporting limit (RL)



APPENDIX A

Agency Correspondence

From: OCDOnline@state.nm.us
To: [Stuart Hyde](#)
Subject: The Oil Conservation Division (OCD) has accepted the application, Application ID: 512207
Date: Friday, October 3, 2025 4:16:00 PM

[**EXTERNAL EMAIL**]

To whom it may concern (c/o Stuart Hyde for HILCORP ENERGY COMPANY),

The OCD has received the submitted *Notification for (Final) Sampling of a Release* (C-141N), for incident ID (n#) nAPP2502156424.

The sampling event is expected to take place:

When: 10/09/2025 @ 09:30

Where: I-18-28N-04W 1750 FSL 530 FEL (36.65901,-107.28456)

Additional Information: Contact PM Stuart Hyde 970-903-1607 or Wes Weichert 816-266-8732

Additional Instructions: San Juan 28-4 Unit 26A (30-039-27636) 36.65901,-107.28456

An OCD representative may be available onsite at the date and time reported. In the absence or presence of an OCD representative, sampling pursuant to 19.15.29.12.D NMAC is required. Sampling must be performed following an approved sampling plan or pursuant to 19.15.29.12.D.(1).(c) NMAC. Should there be a change in the scheduled date and time of the sampling event, then another notification should be resubmitted through OCD permitting as soon as possible.

- **Failure to notify the OCD of sampling events including any changes in date/time per the requirements of 19.15.29.12.D.(1).(a) NMAC, may result in the remediation closure samples not being accepted.**
- **If confirmation sampling is going to take place over multiple days, individual C-141N applications must be submitted for each sampling date. Date ranges are not currently accepted on the C-141N application.**

If you have any questions regarding this application, or don't know why you have received this email, please contact us.

New Mexico Energy, Minerals and Natural Resources Department
1220 South St. Francis Drive
Santa Fe, NM 87505

From: OCDOnline@state.nm.us
To: [Stuart Hyde](#)
Subject: The Oil Conservation Division (OCD) has accepted the application, Application ID: 506413
Date: Tuesday, September 16, 2025 1:54:52 PM

[**EXTERNAL EMAIL**]

To whom it may concern (c/o Stuart Hyde for HILCORP ENERGY COMPANY),

The OCD has received the submitted *Notification for (Final) Sampling of a Release* (C-141N), for incident ID (n#) nAPP2502156424.

The sampling event is expected to take place:

When: 09/25/2025 @ 10:00

Where: I-18-28N-04W 1750 FSL 530 FEL (36.65901,-107.28456)

Additional Information: PM Wes Weichert, 816-266-8732

Additional Instructions: San Juan 28-4 #26A well pad, 36.65901, -107.28456

An OCD representative may be available onsite at the date and time reported. In the absence or presence of an OCD representative, sampling pursuant to 19.15.29.12.D NMAC is required. Sampling must be performed following an approved sampling plan or pursuant to 19.15.29.12.D.(1).(c) NMAC. Should there be a change in the scheduled date and time of the sampling event, then another notification should be resubmitted through OCD permitting as soon as possible.

- **Failure to notify the OCD of sampling events including any changes in date/time per the requirements of 19.15.29.12.D.(1).(a) NMAC, may result in the remediation closure samples not being accepted.**
- **If confirmation sampling is going to take place over multiple days, individual C-141N applications must be submitted for each sampling date. Date ranges are not currently accepted on the C-141N application.**

If you have any questions regarding this application, or don't know why you have received this email, please contact us.

New Mexico Energy, Minerals and Natural Resources Department
1220 South St. Francis Drive
Santa Fe, NM 87505

From: OCDOnline@state.nm.us
To: [Stuart Hyde](#)
Subject: The Oil Conservation Division (OCD) has accepted the application, Application ID: 506411
Date: Tuesday, September 16, 2025 1:52:12 PM

[**EXTERNAL EMAIL**]

To whom it may concern (c/o Stuart Hyde for HILCORP ENERGY COMPANY),

The OCD has received the submitted *Notification for (Final) Sampling of a Release* (C-141N), for incident ID (n#) nAPP2502156424.

The sampling event is expected to take place:

When: 09/23/2025 @ 10:00

Where: I-18-28N-04W 1750 FSL 530 FEL (36.65901,-107.28456)

Additional Information: PM Wes Weichert, 816-266-8732

Additional Instructions: San Juan 28-4 #26A well pad, 36.65901, -107.28456

An OCD representative may be available onsite at the date and time reported. In the absence or presence of an OCD representative, sampling pursuant to 19.15.29.12.D NMAC is required. Sampling must be performed following an approved sampling plan or pursuant to 19.15.29.12.D.(1).(c) NMAC. Should there be a change in the scheduled date and time of the sampling event, then another notification should be resubmitted through OCD permitting as soon as possible.

- **Failure to notify the OCD of sampling events including any changes in date/time per the requirements of 19.15.29.12.D.(1).(a) NMAC, may result in the remediation closure samples not being accepted.**
- **If confirmation sampling is going to take place over multiple days, individual C-141N applications must be submitted for each sampling date. Date ranges are not currently accepted on the C-141N application.**

If you have any questions regarding this application, or don't know why you have received this email, please contact us.

New Mexico Energy, Minerals and Natural Resources Department
1220 South St. Francis Drive
Santa Fe, NM 87505

From: OCDOnline@state.nm.us
To: [Stuart Hyde](#)
Subject: The Oil Conservation Division (OCD) has accepted the application, Application ID: 506380
Date: Tuesday, September 16, 2025 1:30:57 PM

[**EXTERNAL EMAIL**]

To whom it may concern (c/o Stuart Hyde for HILCORP ENERGY COMPANY),

The OCD has received the submitted *Notification for (Final) Sampling of a Release* (C-141N), for incident ID (n#) nAPP2502156424.

The sampling event is expected to take place:

When: 09/22/2025 @ 11:00

Where: I-18-28N-04W 1750 FSL 530 FEL (36.65901,-107.28456)

Additional Information: PM Wes Weichert, 816-266-8732

Additional Instructions: 36.65901, -107.28456

An OCD representative may be available onsite at the date and time reported. In the absence or presence of an OCD representative, sampling pursuant to 19.15.29.12.D NMAC is required. Sampling must be performed following an approved sampling plan or pursuant to 19.15.29.12.D.(1).(c) NMAC. Should there be a change in the scheduled date and time of the sampling event, then another notification should be resubmitted through OCD permitting as soon as possible.

- **Failure to notify the OCD of sampling events including any changes in date/time per the requirements of 19.15.29.12.D.(1).(a) NMAC, may result in the remediation closure samples not being accepted.**
- **If confirmation sampling is going to take place over multiple days, individual C-141N applications must be submitted for each sampling date. Date ranges are not currently accepted on the C-141N application.**

If you have any questions regarding this application, or don't know why you have received this email, please contact us.

New Mexico Energy, Minerals and Natural Resources Department
1220 South St. Francis Drive
Santa Fe, NM 87505

From: [Wells, Shelly, EMNRD](#)
To: [Wes Weichert](#); [Wells, Shelly, EMNRD](#)
Cc: [Kate Kaufman](#); [Stuart Hyde](#)
Subject: RE: [EXTERNAL] nAPP2502156424 - San Juan 28-4 Unit 26A Extension Request
Date: Wednesday, September 24, 2025 11:41:27 AM
Attachments: [image001.png](#)
[image002.png](#)
[image003.png](#)
[image004.png](#)

[**EXTERNAL EMAIL**]

Good morning Wes,

A 90-day extension is approved for nAPP2502156424 SAN JUAN 28-4 UNIT 26A. The new due date to submit your closure report to the OCD is December 29, 2025. Please include a copy of this and all notifications in the closure report to ensure the notifications are documented in the project file.

Kind regards,

Shelly

Shelly Wells * Environmental Specialist-Advanced
Environmental Bureau
EMNRD-Oil Conservation Division
1220 S. St. Francis Drive|Santa Fe, NM 87505
(505)469-7520 Shelly.Wells@emnrd.nm.gov
<http://www.emnrd.state.nm.us/OCD/>

From: Wes Weichert <wweichert@ensolum.com>
Sent: Wednesday, September 24, 2025 11:14 AM
To: Wells, Shelly, EMNRD <Shelly.Wells@emnrd.nm.gov>; Enviro, OCD, EMNRD <OCD.Enviro@emnrd.nm.gov>
Cc: Kate Kaufman <kkaufman@hilcorp.com>; Stuart Hyde <shyde@ensolum.com>
Subject: [EXTERNAL] nAPP2502156424 - San Juan 28-4 Unit 26A Extension Request

CAUTION: This email originated outside of our organization. Exercise caution prior to clicking on links or opening attachments.

Shelly,

On behalf of Hilcorp Energy Company, Ensolum respectfully requests a 90-day extension of the reporting deadline for the San Juan 28-4 Unit 26A (API 30-039-27636) site in San Juan County, New Mexico.

To date, approximately 700 cubic yards of impacted soil have been excavated, confirmation samples are compliant with Closure Criteria, and soil shredding is underway with favorable interim results. Additional time is needed to complete shredding, evaluate stockpile soils, and finalize the Closure Request report.

Accordingly, we request a 90-day extension to the reporting deadline of September 30, 2025, with a new reporting deadline of Monday December 29, 2025. We will submit earlier if results are available sooner.

Please let me know if you need any additional information or would like to discuss.

Best regards,



Wes Weichert, PG*

**Licensed in WY & TX*

Senior Geologist

816-266-8732

Ensolum, LLC





APPENDIX B

Laboratory Analytical Reports

Report to:
Kate Kaufman



5796 U.S. Hwy 64
Farmington, NM 87401

Phone: (505) 632-1881
Envirotech-inc.com



envirotech

Practical Solutions for a Better Tomorrow

Analytical Report

Hilcorp Energy Co

Project Name: San Juan 28-4 #26A

Work Order: E509236

Job Number: 17051-0002

Received: 9/22/2025

Revision: 1

Report Reviewed By:

Walter Hinchman
Laboratory Director
9/24/25

Envirotech Inc. certifies the test results meet all requirements of TNI unless noted otherwise.
Statement of Data Authenticity: Envirotech Inc, attests the data reported has not been altered in any way.
Partial or incomplete reproduction of this report is prohibited, unless approved by Envirotech Inc.
Envirotech Inc, holds the Utah TNI certification NM00979 for data reported.
Envirotech Inc, holds the Texas TNI certification T104704557 for data reported.

Date Reported: 9/24/25

Kate Kaufman
PO Box 61529
Houston, TX 77208



Project Name: San Juan 28-4 #26A
Workorder: E509236
Date Received: 9/22/2025 4:30:00PM

Kate Kaufman,

Thank you for choosing Envirotech, Inc. as your analytical testing laboratory for the sample(s) received on, 9/22/2025 4:30:00PM, under the Project Name: San Juan 28-4 #26A.

The analytical test results summarized in this report with the Project Name: San Juan 28-4 #26A apply to the individual samples collected, identified and submitted bearing the project name on the enclosed chain-of-custody. Subcontracted sample analyses not conducted by Envirotech, Inc., are attached in full as issued by the subcontract laboratory.

Please review the Chain-of-Custody (COC) and Sample Receipt Checklist (SRC) for any issues regarding sample receipt temperature, containers, preservation etc. To best understand your test results, review the entire report summarizing your sample data and the associated quality control batch data.

All reported data in this analytical report were analyzed according to the referenced method(s) and are in compliance with the latest NELAC/TNI standards, unless otherwise noted. Samples or analytical quality control parameters not meeting specific QC criteria are qualified with a data flag. Data flag definitions are located in the Notes and Definitions section of this analytical report.

If you have any questions concerning this report, please feel free to contact Envirotech, Inc.

Respectfully,

Walter Hinchman
Laboratory Director
Office: 505-632-1881
Cell: 775-287-1762
whinchman@envirotech-inc.com

Raina Schwanz
Laboratory Administrator
Office: 505-632-1881
rainaschwanz@envirotech-inc.com

Field Offices:

Southern New Mexico Area

Lynn Jarboe
Laboratory Technical Representative
Office: 505-421-LABS(5227)
Cell: 505-320-4759
ljjarboe@envirotech-inc.com

Michelle Gonzales
Client Representative
Office: 505-421-LABS(5227)
Cell: 505-947-8222
mgonzaless@envirotech-inc.com

Envirotech Web Address: www.envirotech-inc.com

Table of Contents

Title Page	1
Cover Page	2
Table of Contents	3
Sample Summary	5
Sample Data	6
FS01	6
FS02	7
FS03	8
FS04	9
FS05	10
FS06	11
SW01	12
SW02	13
SW03	14
SW04	15
SW05	16
SW06	17
SW07	18
SW08	19
SW09	20
SW10	21
QC Summary Data	22
QC - Volatile Organics by EPA 8021B	22
QC - Nonhalogenated Organics by EPA 8015D - GRO	23
QC - Nonhalogenated Organics by EPA 8015D - DRO/ORO	24

Table of Contents (continued)

Definitions and Notes	25
Chain of Custody etc.	26

Sample Summary

Hilcorp Energy Co	Project Name:	San Juan 28-4 #26A	Reported: 09/24/25 15:01
PO Box 61529	Project Number:	17051-0002	
Houston TX, 77208	Project Manager:	Kate Kaufman	

Client Sample ID	Lab Sample ID	Matrix	Sampled	Received	Container
FS01	E509236-01A	Soil	09/22/25	09/22/25	Glass Jar, 4 oz.
FS02	E509236-02A	Soil	09/22/25	09/22/25	Glass Jar, 4 oz.
FS03	E509236-03A	Soil	09/22/25	09/22/25	Glass Jar, 4 oz.
FS04	E509236-04A	Soil	09/22/25	09/22/25	Glass Jar, 4 oz.
FS05	E509236-05A	Soil	09/22/25	09/22/25	Glass Jar, 4 oz.
FS06	E509236-06A	Soil	09/22/25	09/22/25	Glass Jar, 4 oz.
SW01	E509236-07A	Soil	09/22/25	09/22/25	Glass Jar, 4 oz.
SW02	E509236-08A	Soil	09/22/25	09/22/25	Glass Jar, 4 oz.
SW03	E509236-09A	Soil	09/22/25	09/22/25	Glass Jar, 4 oz.
SW04	E509236-10A	Soil	09/22/25	09/22/25	Glass Jar, 4 oz.
SW05	E509236-11A	Soil	09/22/25	09/22/25	Glass Jar, 4 oz.
SW06	E509236-12A	Soil	09/22/25	09/22/25	Glass Jar, 4 oz.
SW07	E509236-13A	Soil	09/22/25	09/22/25	Glass Jar, 4 oz.
SW08	E509236-14A	Soil	09/22/25	09/22/25	Glass Jar, 4 oz.
SW09	E509236-15A	Soil	09/22/25	09/22/25	Glass Jar, 4 oz.
SW10	E509236-16A	Soil	09/22/25	09/22/25	Glass Jar, 4 oz.



Sample Data

Hilcorp Energy Co
PO Box 61529
Houston TX, 77208

Project Name: San Juan 28-4 #26A
Project Number: 17051-0002
Project Manager: Kate Kaufman

Reported:
9/24/2025 3:01:16PM

FS01

E509236-01

Analyte	Result	Reporting Limit	Dilution	Prepared	Analyzed	Notes
Volatile Organics by EPA 8021B	mg/kg	mg/kg	Analyst: SL		Batch: 2539044	
Benzene	ND	0.0250	1	09/22/25	09/23/25	
Ethylbenzene	ND	0.0250	1	09/22/25	09/23/25	
Toluene	0.0660	0.0250	1	09/22/25	09/23/25	
o-Xylene	ND	0.0250	1	09/22/25	09/23/25	
p,m-Xylene	ND	0.0500	1	09/22/25	09/23/25	
Total Xylenes	ND	0.0250	1	09/22/25	09/23/25	
<i>Surrogate: 4-Bromochlorobenzene-PID</i>	98.2 %	70-130		09/22/25	09/23/25	
Nonhalogenated Organics by EPA 8015D - GRO	mg/kg	mg/kg	Analyst: SL		Batch: 2539044	
Gasoline Range Organics (C6-C10)	ND	20.0	1	09/22/25	09/23/25	
<i>Surrogate: 1-Chloro-4-fluorobenzene-FID</i>	93.0 %	70-130		09/22/25	09/23/25	
Nonhalogenated Organics by EPA 8015D - DRO/ORO	mg/kg	mg/kg	Analyst: KH		Batch: 2539045	
Diesel Range Organics (C10-C28)	ND	25.0	1	09/23/25	09/23/25	
Oil Range Organics (C28-C36)	ND	50.0	1	09/23/25	09/23/25	
<i>Surrogate: n-Nonane</i>	91.9 %	61-141		09/23/25	09/23/25	



Sample Data

Hilcorp Energy Co
PO Box 61529
Houston TX, 77208

Project Name: San Juan 28-4 #26A
Project Number: 17051-0002
Project Manager: Kate Kaufman

Reported:
9/24/2025 3:01:16PM

FS02

E509236-02

Analyte	Result	Reporting Limit	Dilution	Prepared	Analyzed	Notes
Volatile Organics by EPA 8021B						
	mg/kg	mg/kg	Analyst: SL		Batch: 2539044	
Benzene	ND	0.0250	1	09/22/25	09/23/25	
Ethylbenzene	ND	0.0250	1	09/22/25	09/23/25	
Toluene	ND	0.0250	1	09/22/25	09/23/25	
o-Xylene	ND	0.0250	1	09/22/25	09/23/25	
p,m-Xylene	ND	0.0500	1	09/22/25	09/23/25	
Total Xylenes	ND	0.0250	1	09/22/25	09/23/25	
<i>Surrogate: 4-Bromochlorobenzene-PID</i>						
	99.6 %	70-130		09/22/25	09/23/25	
Nonhalogenated Organics by EPA 8015D - GRO						
	mg/kg	mg/kg	Analyst: SL		Batch: 2539044	
Gasoline Range Organics (C6-C10)	ND	20.0	1	09/22/25	09/23/25	
<i>Surrogate: 1-Chloro-4-fluorobenzene-FID</i>						
	92.3 %	70-130		09/22/25	09/23/25	
Nonhalogenated Organics by EPA 8015D - DRO/ORO						
	mg/kg	mg/kg	Analyst: KH		Batch: 2539045	
Diesel Range Organics (C10-C28)	ND	25.0	1	09/23/25	09/23/25	
Oil Range Organics (C28-C36)	ND	50.0	1	09/23/25	09/23/25	
<i>Surrogate: n-Nonane</i>						
	90.4 %	61-141		09/23/25	09/23/25	



Sample Data

Hilcorp Energy Co
PO Box 61529
Houston TX, 77208

Project Name: San Juan 28-4 #26A
Project Number: 17051-0002
Project Manager: Kate Kaufman

Reported:
9/24/2025 3:01:16PM

FS03

E509236-03

Analyte	Result	Reporting Limit	Dilution	Prepared	Analyzed	Notes
Volatile Organics by EPA 8021B		mg/kg	mg/kg	Analyst: SL		Batch: 2539044
Benzene	ND	0.0250	1	09/22/25	09/23/25	
Ethylbenzene	0.326	0.0250	1	09/22/25	09/23/25	
Toluene	1.60	0.0250	1	09/22/25	09/23/25	
o-Xylene	0.236	0.0250	1	09/22/25	09/23/25	
p,m-Xylene	1.25	0.0500	1	09/22/25	09/23/25	
Total Xylenes	1.48	0.0250	1	09/22/25	09/23/25	
<i>Surrogate: 4-Bromochlorobenzene-PID</i>		98.5 %	70-130	09/22/25	09/23/25	
Nonhalogenated Organics by EPA 8015D - GRO		mg/kg	mg/kg	Analyst: SL		Batch: 2539044
Gasoline Range Organics (C6-C10)	80.5	20.0	1	09/22/25	09/23/25	
<i>Surrogate: 1-Chloro-4-fluorobenzene-FID</i>		95.5 %	70-130	09/22/25	09/23/25	
Nonhalogenated Organics by EPA 8015D - DRO/ORO		mg/kg	mg/kg	Analyst: KH		Batch: 2539045
Diesel Range Organics (C10-C28)	28.7	25.0	1	09/23/25	09/23/25	
Oil Range Organics (C28-C36)	ND	50.0	1	09/23/25	09/23/25	
<i>Surrogate: n-Nonane</i>		100 %	61-141	09/23/25	09/23/25	



Sample Data

Hilcorp Energy Co
PO Box 61529
Houston TX, 77208

Project Name: San Juan 28-4 #26A
Project Number: 17051-0002
Project Manager: Kate Kaufman

Reported:
9/24/2025 3:01:16PM

FS04

E509236-04

Analyte	Result	Reporting Limit	Dilution	Prepared	Analyzed	Notes
Volatile Organics by EPA 8021B						
	mg/kg	mg/kg	Analyst: SL		Batch: 2539044	
Benzene	0.0553	0.0250	1	09/22/25	09/23/25	
Ethylbenzene	0.907	0.0250	1	09/22/25	09/23/25	
Toluene	4.71	0.0250	1	09/22/25	09/23/25	
o-Xylene	0.618	0.0250	1	09/22/25	09/23/25	
p,m-Xylene	3.12	0.0500	1	09/22/25	09/23/25	
Total Xylenes	3.74	0.0250	1	09/22/25	09/23/25	
<i>Surrogate: 4-Bromochlorobenzene-PID</i>						
	99.8 %	70-130		09/22/25	09/23/25	
Nonhalogenated Organics by EPA 8015D - GRO						
	mg/kg	mg/kg	Analyst: SL		Batch: 2539044	
Gasoline Range Organics (C6-C10)	202	20.0	1	09/22/25	09/23/25	
<i>Surrogate: 1-Chloro-4-fluorobenzene-FID</i>						
	103 %	70-130		09/22/25	09/23/25	
Nonhalogenated Organics by EPA 8015D - DRO/ORO						
	mg/kg	mg/kg	Analyst: KH		Batch: 2539045	
Diesel Range Organics (C10-C28)	46.6	25.0	1	09/23/25	09/23/25	
Oil Range Organics (C28-C36)	ND	50.0	1	09/23/25	09/23/25	
<i>Surrogate: n-Nonane</i>						
	101 %	61-141		09/23/25	09/23/25	



Sample Data

Hilcorp Energy Co
PO Box 61529
Houston TX, 77208

Project Name: San Juan 28-4 #26A
Project Number: 17051-0002
Project Manager: Kate Kaufman

Reported:
9/24/2025 3:01:16PM

FS05

E509236-05

Analyte	Result	Reporting Limit	Dilution	Prepared	Analyzed	Notes
Volatile Organics by EPA 8021B		mg/kg	mg/kg	Analyst: SL		Batch: 2539044
Benzene	0.0303	0.0250	1	09/22/25	09/23/25	
Ethylbenzene	0.415	0.0250	1	09/22/25	09/23/25	
Toluene	2.24	0.0250	1	09/22/25	09/23/25	
o-Xylene	0.281	0.0250	1	09/22/25	09/23/25	
p,m-Xylene	1.53	0.0500	1	09/22/25	09/23/25	
Total Xylenes	1.81	0.0250	1	09/22/25	09/23/25	
<i>Surrogate: 4-Bromochlorobenzene-PID</i>		97.9 %	70-130	09/22/25	09/23/25	
Nonhalogenated Organics by EPA 8015D - GRO		mg/kg	mg/kg	Analyst: SL		Batch: 2539044
Gasoline Range Organics (C6-C10)	90.9	20.0	1	09/22/25	09/23/25	
<i>Surrogate: 1-Chloro-4-fluorobenzene-FID</i>		95.6 %	70-130	09/22/25	09/23/25	
Nonhalogenated Organics by EPA 8015D - DRO/ORO		mg/kg	mg/kg	Analyst: KH		Batch: 2539045
Diesel Range Organics (C10-C28)	ND	25.0	1	09/23/25	09/23/25	
Oil Range Organics (C28-C36)	ND	50.0	1	09/23/25	09/23/25	
<i>Surrogate: n-Nonane</i>		94.5 %	61-141	09/23/25	09/23/25	



Sample Data

Hilcorp Energy Co
PO Box 61529
Houston TX, 77208

Project Name: San Juan 28-4 #26A
Project Number: 17051-0002
Project Manager: Kate Kaufman

Reported:
9/24/2025 3:01:16PM

FS06

E509236-06

Analyte	Result	Reporting Limit	Dilution	Prepared	Analyzed	Notes
Volatile Organics by EPA 8021B		mg/kg	mg/kg	Analyst: SL		Batch: 2539044
Benzene	ND	0.0250	1	09/22/25	09/23/25	
Ethylbenzene	0.351	0.0250	1	09/22/25	09/23/25	
Toluene	1.01	0.0250	1	09/22/25	09/23/25	
o-Xylene	0.281	0.0250	1	09/22/25	09/23/25	
p,m-Xylene	1.28	0.0500	1	09/22/25	09/23/25	
Total Xylenes	1.56	0.0250	1	09/22/25	09/23/25	
<i>Surrogate: 4-Bromochlorobenzene-PID</i>		101 %	70-130	09/22/25	09/23/25	
Nonhalogenated Organics by EPA 8015D - GRO		mg/kg	mg/kg	Analyst: SL		Batch: 2539044
Gasoline Range Organics (C6-C10)	89.1	20.0	1	09/22/25	09/23/25	
<i>Surrogate: 1-Chloro-4-fluorobenzene-FID</i>		96.2 %	70-130	09/22/25	09/23/25	
Nonhalogenated Organics by EPA 8015D - DRO/ORO		mg/kg	mg/kg	Analyst: KH		Batch: 2539045
Diesel Range Organics (C10-C28)	26.6	25.0	1	09/23/25	09/23/25	
Oil Range Organics (C28-C36)	ND	50.0	1	09/23/25	09/23/25	
<i>Surrogate: n-Nonane</i>		92.6 %	61-141	09/23/25	09/23/25	



Sample Data

Hilcorp Energy Co
PO Box 61529
Houston TX, 77208

Project Name: San Juan 28-4 #26A
Project Number: 17051-0002
Project Manager: Kate Kaufman

Reported:
9/24/2025 3:01:16PM

SW01

E509236-07

Analyte	Result	Reporting Limit	Dilution	Prepared	Analyzed	Notes
Volatile Organics by EPA 8021B						
	mg/kg	mg/kg	Analyst: SL		Batch: 2539044	
Benzene	ND	0.0250	1	09/22/25	09/23/25	
Ethylbenzene	ND	0.0250	1	09/22/25	09/23/25	
Toluene	ND	0.0250	1	09/22/25	09/23/25	
o-Xylene	ND	0.0250	1	09/22/25	09/23/25	
p,m-Xylene	ND	0.0500	1	09/22/25	09/23/25	
Total Xylenes	ND	0.0250	1	09/22/25	09/23/25	
<i>Surrogate: 4-Bromochlorobenzene-PID</i>						
	96.4 %	70-130		09/22/25	09/23/25	
Nonhalogenated Organics by EPA 8015D - GRO						
	mg/kg	mg/kg	Analyst: SL		Batch: 2539044	
Gasoline Range Organics (C6-C10)	ND	20.0	1	09/22/25	09/23/25	
<i>Surrogate: 1-Chloro-4-fluorobenzene-FID</i>						
	90.8 %	70-130		09/22/25	09/23/25	
Nonhalogenated Organics by EPA 8015D - DRO/ORO						
	mg/kg	mg/kg	Analyst: KH		Batch: 2539045	
Diesel Range Organics (C10-C28)	ND	25.0	1	09/23/25	09/23/25	
Oil Range Organics (C28-C36)	ND	50.0	1	09/23/25	09/23/25	
<i>Surrogate: n-Nonane</i>						
	91.3 %	61-141		09/23/25	09/23/25	



Sample Data

Hilcorp Energy Co
PO Box 61529
Houston TX, 77208

Project Name: San Juan 28-4 #26A
Project Number: 17051-0002
Project Manager: Kate Kaufman

Reported:
9/24/2025 3:01:16PM

SW02

E509236-08

Analyte	Result	Reporting Limit	Dilution	Prepared	Analyzed	Notes
Volatile Organics by EPA 8021B		mg/kg	mg/kg	Analyst: SL		Batch: 2539044
Benzene	ND	0.0250	1	09/22/25	09/23/25	
Ethylbenzene	ND	0.0250	1	09/22/25	09/23/25	
Toluene	ND	0.0250	1	09/22/25	09/23/25	
o-Xylene	ND	0.0250	1	09/22/25	09/23/25	
p,m-Xylene	ND	0.0500	1	09/22/25	09/23/25	
Total Xylenes	ND	0.0250	1	09/22/25	09/23/25	
<i>Surrogate: 4-Bromochlorobenzene-PID</i>		96.5 %	70-130	09/22/25	09/23/25	
Nonhalogenated Organics by EPA 8015D - GRO		mg/kg	mg/kg	Analyst: SL		Batch: 2539044
Gasoline Range Organics (C6-C10)	ND	20.0	1	09/22/25	09/23/25	
<i>Surrogate: 1-Chloro-4-fluorobenzene-FID</i>		91.0 %	70-130	09/22/25	09/23/25	
Nonhalogenated Organics by EPA 8015D - DRO/ORO		mg/kg	mg/kg	Analyst: KH		Batch: 2539045
Diesel Range Organics (C10-C28)	ND	25.0	1	09/23/25	09/23/25	
Oil Range Organics (C28-C36)	ND	50.0	1	09/23/25	09/23/25	
<i>Surrogate: n-Nonane</i>		93.8 %	61-141	09/23/25	09/23/25	



Sample Data

Hilcorp Energy Co
PO Box 61529
Houston TX, 77208

Project Name: San Juan 28-4 #26A
Project Number: 17051-0002
Project Manager: Kate Kaufman

Reported:
9/24/2025 3:01:16PM

SW03

E509236-09

Analyte	Result	Reporting Limit	Dilution	Prepared	Analyzed	Notes
Volatile Organics by EPA 8021B						
	mg/kg	mg/kg	Analyst: SL		Batch: 2539044	
Benzene	ND	0.0250	1	09/22/25	09/23/25	
Ethylbenzene	ND	0.0250	1	09/22/25	09/23/25	
Toluene	ND	0.0250	1	09/22/25	09/23/25	
o-Xylene	ND	0.0250	1	09/22/25	09/23/25	
p,m-Xylene	ND	0.0500	1	09/22/25	09/23/25	
Total Xylenes	ND	0.0250	1	09/22/25	09/23/25	
<i>Surrogate: 4-Bromochlorobenzene-PID</i>						
	99.9 %	70-130		09/22/25	09/23/25	
Nonhalogenated Organics by EPA 8015D - GRO						
	mg/kg	mg/kg	Analyst: SL		Batch: 2539044	
Gasoline Range Organics (C6-C10)	ND	20.0	1	09/22/25	09/23/25	
<i>Surrogate: 1-Chloro-4-fluorobenzene-FID</i>						
	91.8 %	70-130		09/22/25	09/23/25	
Nonhalogenated Organics by EPA 8015D - DRO/ORO						
	mg/kg	mg/kg	Analyst: KH		Batch: 2539045	
Diesel Range Organics (C10-C28)	ND	25.0	1	09/23/25	09/23/25	
Oil Range Organics (C28-C36)	ND	50.0	1	09/23/25	09/23/25	
<i>Surrogate: n-Nonane</i>						
	101 %	61-141		09/23/25	09/23/25	



Sample Data

Hilcorp Energy Co
PO Box 61529
Houston TX, 77208

Project Name: San Juan 28-4 #26A
Project Number: 17051-0002
Project Manager: Kate Kaufman

Reported:
9/24/2025 3:01:16PM

SW04

E509236-10

Analyte	Result	Reporting Limit	Dilution	Prepared	Analyzed	Notes
Volatile Organics by EPA 8021B		mg/kg	mg/kg	Analyst: SL		Batch: 2539044
Benzene	ND	0.0250	1	09/22/25	09/23/25	
Ethylbenzene	ND	0.0250	1	09/22/25	09/23/25	
Toluene	ND	0.0250	1	09/22/25	09/23/25	
o-Xylene	ND	0.0250	1	09/22/25	09/23/25	
p,m-Xylene	ND	0.0500	1	09/22/25	09/23/25	
Total Xylenes	ND	0.0250	1	09/22/25	09/23/25	
<i>Surrogate: 4-Bromochlorobenzene-PID</i>		100 %	70-130	09/22/25	09/23/25	
Nonhalogenated Organics by EPA 8015D - GRO		mg/kg	mg/kg	Analyst: SL		Batch: 2539044
Gasoline Range Organics (C6-C10)	ND	20.0	1	09/22/25	09/23/25	
<i>Surrogate: 1-Chloro-4-fluorobenzene-FID</i>		91.6 %	70-130	09/22/25	09/23/25	
Nonhalogenated Organics by EPA 8015D - DRO/ORO		mg/kg	mg/kg	Analyst: KH		Batch: 2539045
Diesel Range Organics (C10-C28)	ND	25.0	1	09/23/25	09/23/25	
Oil Range Organics (C28-C36)	ND	50.0	1	09/23/25	09/23/25	
<i>Surrogate: n-Nonane</i>		99.9 %	61-141	09/23/25	09/23/25	



Sample Data

Hilcorp Energy Co
PO Box 61529
Houston TX, 77208

Project Name: San Juan 28-4 #26A
Project Number: 17051-0002
Project Manager: Kate Kaufman

Reported:
9/24/2025 3:01:16PM

SW05

E509236-11

Analyte	Result	Reporting Limit	Dilution	Prepared	Analyzed	Notes
Volatile Organics by EPA 8021B		mg/kg	mg/kg	Analyst: SL		Batch: 2539044
Benzene	ND	0.0250	1	09/22/25	09/23/25	
Ethylbenzene	0.0390	0.0250	1	09/22/25	09/23/25	
Toluene	0.298	0.0250	1	09/22/25	09/23/25	
o-Xylene	0.0405	0.0250	1	09/22/25	09/23/25	
p,m-Xylene	0.159	0.0500	1	09/22/25	09/23/25	
Total Xylenes	0.200	0.0250	1	09/22/25	09/23/25	
<i>Surrogate: 4-Bromochlorobenzene-PID</i>		102 %	70-130	09/22/25	09/23/25	
Nonhalogenated Organics by EPA 8015D - GRO		mg/kg	mg/kg	Analyst: SL		Batch: 2539044
Gasoline Range Organics (C6-C10)	ND	20.0	1	09/22/25	09/23/25	
<i>Surrogate: 1-Chloro-4-fluorobenzene-FID</i>		92.3 %	70-130	09/22/25	09/23/25	
Nonhalogenated Organics by EPA 8015D - DRO/ORO		mg/kg	mg/kg	Analyst: KH		Batch: 2539045
Diesel Range Organics (C10-C28)	ND	25.0	1	09/23/25	09/23/25	
Oil Range Organics (C28-C36)	ND	50.0	1	09/23/25	09/23/25	
<i>Surrogate: n-Nonane</i>		102 %	61-141	09/23/25	09/23/25	



Sample Data

Hilcorp Energy Co
PO Box 61529
Houston TX, 77208

Project Name: San Juan 28-4 #26A
Project Number: 17051-0002
Project Manager: Kate Kaufman

Reported:
9/24/2025 3:01:16PM

SW06

E509236-12

Analyte	Result	Reporting Limit	Dilution	Prepared	Analyzed	Notes
Volatile Organics by EPA 8021B		mg/kg	mg/kg	Analyst: SL		Batch: 2539044
Benzene	ND	0.0250	1	09/22/25	09/23/25	
Ethylbenzene	ND	0.0250	1	09/22/25	09/23/25	
Toluene	ND	0.0250	1	09/22/25	09/23/25	
o-Xylene	ND	0.0250	1	09/22/25	09/23/25	
p,m-Xylene	ND	0.0500	1	09/22/25	09/23/25	
Total Xylenes	ND	0.0250	1	09/22/25	09/23/25	
<i>Surrogate: 4-Bromochlorobenzene-PID</i>		102 %	70-130	09/22/25	09/23/25	
Nonhalogenated Organics by EPA 8015D - GRO		mg/kg	mg/kg	Analyst: SL		Batch: 2539044
Gasoline Range Organics (C6-C10)	ND	20.0	1	09/22/25	09/23/25	
<i>Surrogate: 1-Chloro-4-fluorobenzene-FID</i>		92.4 %	70-130	09/22/25	09/23/25	
Nonhalogenated Organics by EPA 8015D - DRO/ORO		mg/kg	mg/kg	Analyst: KH		Batch: 2539045
Diesel Range Organics (C10-C28)	ND	25.0	1	09/23/25	09/23/25	
Oil Range Organics (C28-C36)	ND	50.0	1	09/23/25	09/23/25	
<i>Surrogate: n-Nonane</i>		97.8 %	61-141	09/23/25	09/23/25	



Sample Data

Hilcorp Energy Co
PO Box 61529
Houston TX, 77208

Project Name: San Juan 28-4 #26A
Project Number: 17051-0002
Project Manager: Kate Kaufman

Reported:
9/24/2025 3:01:16PM

SW07

E509236-13

Analyte	Result	Reporting Limit	Dilution	Prepared	Analyzed	Notes
Volatile Organics by EPA 8021B		mg/kg	mg/kg	Analyst: SL		Batch: 2539044
Benzene	ND	0.0250	1	09/22/25	09/23/25	
Ethylbenzene	ND	0.0250	1	09/22/25	09/23/25	
Toluene	0.0296	0.0250	1	09/22/25	09/23/25	
o-Xylene	ND	0.0250	1	09/22/25	09/23/25	
p,m-Xylene	ND	0.0500	1	09/22/25	09/23/25	
Total Xylenes	ND	0.0250	1	09/22/25	09/23/25	
<i>Surrogate: 4-Bromochlorobenzene-PID</i>		104 %	70-130	09/22/25	09/23/25	
Nonhalogenated Organics by EPA 8015D - GRO		mg/kg	mg/kg	Analyst: SL		Batch: 2539044
Gasoline Range Organics (C6-C10)	ND	20.0	1	09/22/25	09/23/25	
<i>Surrogate: 1-Chloro-4-fluorobenzene-FID</i>		91.8 %	70-130	09/22/25	09/23/25	
Nonhalogenated Organics by EPA 8015D - DRO/ORO		mg/kg	mg/kg	Analyst: KH		Batch: 2539045
Diesel Range Organics (C10-C28)	ND	25.0	1	09/23/25	09/23/25	
Oil Range Organics (C28-C36)	ND	50.0	1	09/23/25	09/23/25	
<i>Surrogate: n-Nonane</i>		99.5 %	61-141	09/23/25	09/23/25	



Sample Data

Hilcorp Energy Co
PO Box 61529
Houston TX, 77208

Project Name: San Juan 28-4 #26A
Project Number: 17051-0002
Project Manager: Kate Kaufman

Reported:
9/24/2025 3:01:16PM

SW08

E509236-14

Analyte	Result	Reporting Limit	Dilution	Prepared	Analyzed	Notes
Volatile Organics by EPA 8021B						
	mg/kg	mg/kg	Analyst: SL		Batch: 2539044	
Benzene	ND	0.0250	1	09/22/25	09/23/25	
Ethylbenzene	ND	0.0250	1	09/22/25	09/23/25	
Toluene	ND	0.0250	1	09/22/25	09/23/25	
o-Xylene	ND	0.0250	1	09/22/25	09/23/25	
p,m-Xylene	ND	0.0500	1	09/22/25	09/23/25	
Total Xylenes	ND	0.0250	1	09/22/25	09/23/25	
<i>Surrogate: 4-Bromochlorobenzene-PID</i>						
	99.2 %	70-130		09/22/25	09/23/25	
Nonhalogenated Organics by EPA 8015D - GRO						
	mg/kg	mg/kg	Analyst: SL		Batch: 2539044	
Gasoline Range Organics (C6-C10)	ND	20.0	1	09/22/25	09/23/25	
<i>Surrogate: 1-Chloro-4-fluorobenzene-FID</i>						
	91.3 %	70-130		09/22/25	09/23/25	
Nonhalogenated Organics by EPA 8015D - DRO/ORO						
	mg/kg	mg/kg	Analyst: KH		Batch: 2539045	
Diesel Range Organics (C10-C28)	ND	25.0	1	09/23/25	09/23/25	
Oil Range Organics (C28-C36)	ND	50.0	1	09/23/25	09/23/25	
<i>Surrogate: n-Nonane</i>						
	97.3 %	61-141		09/23/25	09/23/25	



Sample Data

Hilcorp Energy Co
PO Box 61529
Houston TX, 77208

Project Name: San Juan 28-4 #26A
Project Number: 17051-0002
Project Manager: Kate Kaufman

Reported:
9/24/2025 3:01:16PM

SW09

E509236-15

Analyte	Result	Reporting Limit	Dilution	Prepared	Analyzed	Notes
Volatile Organics by EPA 8021B		mg/kg	mg/kg	Analyst: SL		Batch: 2539044
Benzene	ND	0.0250	1	09/22/25	09/23/25	
Ethylbenzene	ND	0.0250	1	09/22/25	09/23/25	
Toluene	ND	0.0250	1	09/22/25	09/23/25	
o-Xylene	ND	0.0250	1	09/22/25	09/23/25	
p,m-Xylene	ND	0.0500	1	09/22/25	09/23/25	
Total Xylenes	ND	0.0250	1	09/22/25	09/23/25	
<i>Surrogate: 4-Bromochlorobenzene-PID</i>		96.1 %	70-130	09/22/25	09/23/25	
Nonhalogenated Organics by EPA 8015D - GRO		mg/kg	mg/kg	Analyst: SL		Batch: 2539044
Gasoline Range Organics (C6-C10)	ND	20.0	1	09/22/25	09/23/25	
<i>Surrogate: 1-Chloro-4-fluorobenzene-FID</i>		90.2 %	70-130	09/22/25	09/23/25	
Nonhalogenated Organics by EPA 8015D - DRO/ORO		mg/kg	mg/kg	Analyst: KH		Batch: 2539045
Diesel Range Organics (C10-C28)	ND	25.0	1	09/23/25	09/23/25	
Oil Range Organics (C28-C36)	ND	50.0	1	09/23/25	09/23/25	
<i>Surrogate: n-Nonane</i>		98.9 %	61-141	09/23/25	09/23/25	



Sample Data

Hilcorp Energy Co
PO Box 61529
Houston TX, 77208

Project Name: San Juan 28-4 #26A
Project Number: 17051-0002
Project Manager: Kate Kaufman

Reported:
9/24/2025 3:01:16PM

SW10

E509236-16

Analyte	Result	Reporting Limit	Dilution	Prepared	Analyzed	Notes
Volatile Organics by EPA 8021B		mg/kg	mg/kg	Analyst: SL		Batch: 2539044
Benzene	ND	0.0250	1	09/22/25	09/23/25	
Ethylbenzene	ND	0.0250	1	09/22/25	09/23/25	
Toluene	ND	0.0250	1	09/22/25	09/23/25	
o-Xylene	ND	0.0250	1	09/22/25	09/23/25	
p,m-Xylene	ND	0.0500	1	09/22/25	09/23/25	
Total Xylenes	ND	0.0250	1	09/22/25	09/23/25	
<i>Surrogate: 4-Bromochlorobenzene-PID</i>		98.1 %	70-130	09/22/25	09/23/25	
Nonhalogenated Organics by EPA 8015D - GRO		mg/kg	mg/kg	Analyst: SL		Batch: 2539044
Gasoline Range Organics (C6-C10)	ND	20.0	1	09/22/25	09/23/25	
<i>Surrogate: 1-Chloro-4-fluorobenzene-FID</i>		90.5 %	70-130	09/22/25	09/23/25	
Nonhalogenated Organics by EPA 8015D - DRO/ORO		mg/kg	mg/kg	Analyst: KH		Batch: 2539045
Diesel Range Organics (C10-C28)	ND	25.0	1	09/23/25	09/23/25	
Oil Range Organics (C28-C36)	ND	50.0	1	09/23/25	09/23/25	
<i>Surrogate: n-Nonane</i>		99.6 %	61-141	09/23/25	09/23/25	



QC Summary Data

Hilcorp Energy Co	Project Name:	San Juan 28-4 #26A	Reported:
PO Box 61529	Project Number:	17051-0002	
Houston TX, 77208	Project Manager:	Kate Kaufman	9/24/2025 3:01:16PM

Volatile Organics by EPA 8021B

Analyst: SL

Analyte	Result mg/kg	Reporting Limit mg/kg	Spike Level mg/kg	Source Result mg/kg	Rec %	Rec Limits %	RPD %	RPD Limit %	Notes
---------	-----------------	-----------------------------	-------------------------	---------------------------	----------	--------------------	----------	-------------------	-------

Blank (2539044-BLK1)

Prepared: 09/22/25 Analyzed: 09/22/25

Benzene	ND	0.0250							
Ethylbenzene	ND	0.0250							
Toluene	ND	0.0250							
o-Xylene	ND	0.0250							
p,m-Xylene	ND	0.0500							
Total Xylenes	ND	0.0250							
Surrogate: 4-Bromochlorobenzene-PID	7.87		8.00		98.4	70-130			

LCS (2539044-BS1)

Prepared: 09/22/25 Analyzed: 09/22/25

Benzene	5.55	0.0250	5.00		111	70-130			
Ethylbenzene	5.50	0.0250	5.00		110	70-130			
Toluene	5.51	0.0250	5.00		110	70-130			
o-Xylene	5.43	0.0250	5.00		109	70-130			
p,m-Xylene	11.1	0.0500	10.0		111	70-130			
Total Xylenes	16.5	0.0250	15.0		110	70-130			
Surrogate: 4-Bromochlorobenzene-PID	7.66		8.00		95.7	70-130			

Matrix Spike (2539044-MS1)

Source: E509236-05

Prepared: 09/22/25 Analyzed: 09/23/25

Benzene	5.59	0.0250	5.00	0.0303	111	70-130			
Ethylbenzene	5.88	0.0250	5.00	0.415	109	70-130			
Toluene	7.69	0.0250	5.00	2.24	109	70-130			
o-Xylene	5.74	0.0250	5.00	0.281	109	70-130			
p,m-Xylene	12.4	0.0500	10.0	1.53	109	70-130			
Total Xylenes	18.2	0.0250	15.0	1.81	109	70-130			
Surrogate: 4-Bromochlorobenzene-PID	8.04		8.00		101	70-130			

Matrix Spike Dup (2539044-MSD1)

Source: E509236-05

Prepared: 09/22/25 Analyzed: 09/23/25

Benzene	5.46	0.0250	5.00	0.0303	109	70-130	2.28	27	
Ethylbenzene	5.73	0.0250	5.00	0.415	106	70-130	2.61	26	
Toluene	7.22	0.0250	5.00	2.24	99.8	70-130	6.20	20	
o-Xylene	5.60	0.0250	5.00	0.281	106	70-130	2.39	25	
p,m-Xylene	12.1	0.0500	10.0	1.53	106	70-130	2.68	23	
Total Xylenes	17.7	0.0250	15.0	1.81	106	70-130	2.59	26	
Surrogate: 4-Bromochlorobenzene-PID	7.87		8.00		98.3	70-130			



QC Summary Data

Hilcorp Energy Co	Project Name:	San Juan 28-4 #26A	Reported:
PO Box 61529	Project Number:	17051-0002	
Houston TX, 77208	Project Manager:	Kate Kaufman	9/24/2025 3:01:16PM

Nonhalogenated Organics by EPA 8015D - GRO

Analyst: SL

Analyte	Result mg/kg	Reporting Limit mg/kg	Spike Level mg/kg	Source Result mg/kg	Rec %	Rec Limits %	RPD %	RPD Limit %	Notes
---------	-----------------	-----------------------------	-------------------------	---------------------------	----------	--------------------	----------	-------------------	-------

Blank (2539044-BLK1)

Prepared: 09/22/25 Analyzed: 09/22/25

Gasoline Range Organics (C6-C10)	ND	20.0							
Surrogate: 1-Chloro-4-fluorobenzene-FID	7.49		8.00		93.6	70-130			

LCS (2539044-BS2)

Prepared: 09/22/25 Analyzed: 09/22/25

Gasoline Range Organics (C6-C10)	52.0	20.0	50.0		104	70-130			
Surrogate: 1-Chloro-4-fluorobenzene-FID	7.62		8.00		95.2	70-130			

Matrix Spike (2539044-MS2)

Source: E509236-05

Prepared: 09/22/25 Analyzed: 09/23/25

Gasoline Range Organics (C6-C10)	147	20.0	50.0	90.9	113	70-130			
Surrogate: 1-Chloro-4-fluorobenzene-FID	7.94		8.00		99.2	70-130			

Matrix Spike Dup (2539044-MSD2)

Source: E509236-05

Prepared: 09/22/25 Analyzed: 09/23/25

Gasoline Range Organics (C6-C10)	132	20.0	50.0	90.9	82.4	70-130	11.0	20	
Surrogate: 1-Chloro-4-fluorobenzene-FID	7.75		8.00		96.9	70-130			



QC Summary Data

Hilcorp Energy Co	Project Name:	San Juan 28-4 #26A	Reported:
PO Box 61529	Project Number:	17051-0002	
Houston TX, 77208	Project Manager:	Kate Kaufman	9/24/2025 3:01:16PM

Nonhalogenated Organics by EPA 8015D - DRO/ORO

Analyst: KH

Analyte	Result mg/kg	Reporting Limit mg/kg	Spike Level mg/kg	Source Result mg/kg	Rec %	Rec Limits %	RPD %	RPD Limit %	Notes
---------	-----------------	-----------------------------	-------------------------	---------------------------	----------	--------------------	----------	-------------------	-------

Blank (2539045-BLK1)					Prepared: 09/23/25 Analyzed: 09/23/25				
Diesel Range Organics (C10-C28)	ND	25.0							
Oil Range Organics (C28-C36)	ND	50.0							
Surrogate: n-Nonane	44.3		50.0		88.5	61-141			

LCS (2539045-BS1)					Prepared: 09/23/25 Analyzed: 09/23/25				
Diesel Range Organics (C10-C28)	233	25.0	250		93.4	66-144			
Surrogate: n-Nonane	45.3		50.0		90.7	61-141			

Matrix Spike (2539045-MS1)					Source: E509236-01		Prepared: 09/23/25 Analyzed: 09/23/25		
Diesel Range Organics (C10-C28)	238	25.0	250	ND	95.0	56-156			
Surrogate: n-Nonane	46.2		50.0		92.4	61-141			

Matrix Spike Dup (2539045-MSD1)					Source: E509236-01		Prepared: 09/23/25 Analyzed: 09/23/25		
Diesel Range Organics (C10-C28)	239	25.0	250	ND	95.7	56-156	0.724	20	
Surrogate: n-Nonane	46.6		50.0		93.1	61-141			

QC Summary Report Comment:
Calculations are based off of the raw (non-rounded) data. However, for reporting purposes all QC data is rounded to three significant figures.
Therefore, hand calculated values may differ slightly.



Definitions and Notes

Hilcorp Energy Co	Project Name:	San Juan 28-4 #26A	
PO Box 61529	Project Number:	17051-0002	Reported:
Houston TX, 77208	Project Manager:	Kate Kaufman	09/24/25 15:01

- ND Analyte NOT DETECTED at or above the reporting limit
- NR Not Reported
- RPD Relative Percent Difference
- DNI Did Not Ignite
- DNR Did not react with the addition of acid or base.

Note (1): Methods marked with ** are non-accredited methods.

Note (2): Soil data is reported on an "as received" weight basis, unless reported otherwise.



Chain of Custody

Page 1 of 2

Client Information					Invoice Information			Lab Use Only		TAT		State											
Client: <u>Hilcorp</u>					Company: _____			Lab WO# <u>E509236</u>		Job Number <u>17051-0002</u>		1D <input checked="" type="checkbox"/> 2D <input type="checkbox"/> 3D <input type="checkbox"/> Std <input type="checkbox"/>		NM <input checked="" type="checkbox"/> CO <input type="checkbox"/> UT <input type="checkbox"/> TX <input type="checkbox"/> Compliance <input type="checkbox"/> Y <input type="checkbox"/> or <input type="checkbox"/> N <input type="checkbox"/> PWSID # _____									
Project Name: <u>San Juan 28-4 #26A</u>					Address: _____			EPA Program															
Project Manager: <u>Kate Kaufman</u>					City, State, Zip: _____			Analysis and Method															
Address: _____					Phone: _____			DRO/ORO by 8015		GRO/DRO by 8015		BTEX by 8021		VOC by 8260		Chloride 300.0		BGDOC - NM		TCEQ 1005 - TX		RCRA 8 Metals	
City, State, Zip: _____					Email: _____																		
Phone: _____					Miscellaneous: _____																		
Email: <u>kkaufman@hilcorp.com</u>																							
Sample Information										Temp		Remarks											
Time Sampled	Date Sampled	Matrix	No. of Containers	Sample ID	Field Filter	Lab Number																	
1412	4-22	soil	1x	F501		1	XX	X					14.7										
1414				F502		2							14.4										
1415				F503		3							14.4										
1416				F504		4							14.0										
1417				F505		5							14.0										
1418				F506		6							13.8										
1419				SW01		7							14.0										
1420				SW02		8							13.5										
1421				SW03		9							14.0										
1422				SW04		10							14.0										
Additional Instructions: <u>cc:mpollock@ensolum.com, Zmyerse@ensolum.com, wweichert@ensolum.com</u>																							
I, (field sampler), attest to the validity and authenticity of this sample. I am aware that tampering with or intentionally mislabeling the sample location, date or time of collection is considered fraud and may be grounds for legal action.																							
Sampled by: <u>Zach Myers</u>																							
Relinquished by: (Signature)		Date		Time		Received by: (Signature)		Date		Time		Samples requiring thermal preservation must be received on ice the day they are sampled or received packed in ice at an avg temp above 0 but less than 6 °C on subsequent days.											
<u>Zach Myers</u>		4-22-25		16:30		<u>Patricia King</u>		4/22/25		16:30		Lab Use Only											
Relinquished by: (Signature)		Date		Time		Received by: (Signature)		Date		Time		Received on ice: <input checked="" type="checkbox"/> Y <input type="checkbox"/> N											
Relinquished by: (Signature)		Date		Time		Received by: (Signature)		Date		Time		T1 _____ T2 _____ T3 _____											
Relinquished by: (Signature)		Date		Time		Received by: (Signature)		Date		Time		AVG Temp °C _____											
Sample Matrix: S - Soil, Sd - Solid, Sg - Sludge, A - Aqueous, O - Other _____ Container Type: g - glass, p - poly/plastic, ag - amber glass, v - VOA _____																							
Note: Samples are discarded 14 days after results are reported unless other arrangements are made. Hazardous samples will be returned to client or disposed of at the client expense. The report for the analysis of the above samples is applicable only to those samples received by the laboratory with this COC. The liability of the laboratory is limited to the amount paid for on the report.																							



Chain of Custody

Page 2 of 2

Client Information				Invoice Information		Lab Use Only		TAT		State							
Client: <u>Hilcorp</u>				Company: <u>Hilcorp</u>		Lab WO# <u>E509236</u>		Job Number <u>17051-0002</u>		1D	2D	3D	Std	NM	CO	UT	TX
Project Name: <u>Sandwich 28-4 #264</u>				Address:													
Project Manager:				City, State, Zip:													
Address:				Phone:													
City, State, Zip:				Email:													
Phone:				Miscellaneous:													
Email: <u>kkaufman@hilcorp.com</u>																	

Sample Information						Analysis and Method										EPA Program			Remarks
Time Sampled	Date Sampled	Matrix	No. of Containers	Sample ID	Field Filter	Lab Number	DRO/ORO by 8015	GRO/DRO by 8015	BTEX by 8021	VOC by 8260	Chloride 300.0	BGDOC - NM	TCEQ 1005 - TX	RCRA 8 Metals	SDWA	CWA	RCRA		
						Compliance	Y	or	N										
						PWSID #													
1423	9-22	soil	1x	SW05		11	X	X	X									13.5	
1424				SW06		12												13.6	
1426				SW07		13												13.6	
1427				SW08		14												14.1	
1430				SW09		15												13.8	
1432				SW10		16												14.2	

Additional Instructions:

I, (field sampler), attest to the validity and authenticity of this sample. I am aware that tampering with or intentionally mislabeling the sample location, date or time of collection is considered fraud and may be grounds for legal action.

Sampled by: Zach Myers

Relinquished by: (Signature)	Date	Time	Received by: (Signature)	Date	Time	Samples requiring thermal preservation must be received on ice the day they are sampled or received packed in ice at an avg temp above 0 but less than 6 °C on subsequent day. Lab Use Only Received on ice: <u>Y</u> / N T1 _____ T2 _____ T3 _____ AVG Temp °C _____
Relinquished by: (Signature)	Date	Time	Received by: (Signature)	Date	Time	
Relinquished by: (Signature)	Date	Time	Received by: (Signature)	Date	Time	
Relinquished by: (Signature)	Date	Time	Received by: (Signature)	Date	Time	

Sample Matrix: S - Soil, Sd - Solid, Sg - Sludge, A - Aqueous, O - Other _____ Container Type: g - glass, p - poly/plastic, ag - amber glass, v - VOA _____

Note: Samples are discarded 14 days after results are reported unless other arrangements are made. Hazardous samples will be returned to client or disposed of at the client expense. The report for the analysis of the above samples is applicable only to those samples received by the laboratory with this COC. The liability of the laboratory is limited to the amount paid for on the report.



Envirotech Analytical Laboratory

Printed: 9/24/2025 2:59:47PM

Sample Receipt Checklist (SRC)

Instructions: Please take note of any NO checkmarks.

If we receive no response concerning these items within 24 hours of the date of this notice, all the samples will be analyzed as requested.

Client:	Hilcorp Energy Co	Date Received:	09/22/25 16:30	Work Order ID:	E509236
Phone:	-	Date Logged In:	09/22/25 16:32	Logged In By:	Noe Soto
Email:		Due Date:	09/24/25 17:00 (2 day TAT)		

Chain of Custody (COC)

1. Does the sample ID match the COC? Yes
2. Does the number of samples per sampling site location match the COC? Yes
3. Were samples dropped off by client or carrier? Yes
4. Was the COC complete, i.e., signatures, dates/times, requested analyses? Yes
5. Were all samples received within holding time? Yes

Note: Analysis, such as pH which should be conducted in the field, i.e., 15 minute hold time, are not included in this discussion.

Carrier: Zach MyersComments/Resolution

Samples received on ice. Sample temperatures were above 6 degrees celsius.

Sample Turn Around Time (TAT)

6. Did the COC indicate standard TAT, or Expedited TAT? Yes

Sample Cooler

7. Was a sample cooler received? Yes
8. If yes, was cooler received in good condition? Yes
9. Was the sample(s) received intact, i.e., not broken? Yes
10. Were custody/security seals present? No
11. If yes, were custody/security seals intact? NA
12. Was the sample received on ice? Yes

Note: Thermal preservation is not required, if samples are received within 15 minutes of sampling

13. See COC for individual sample temps. Samples outside of 0°C-6°C will be recorded in comments.

Sample Container

14. Are aqueous VOC samples present? No
15. Are VOC samples collected in VOA Vials? NA
16. Is the head space less than 6-8 mm (pea sized or less)? NA
17. Was a trip blank (TB) included for VOC analyses? NA
18. Are non-VOC samples collected in the correct containers? Yes
19. Is the appropriate volume/weight or number of sample containers collected? Yes

Field Label

20. Were field sample labels filled out with the minimum information:
 - Sample ID? Yes
 - Date/Time Collected? Yes
 - Collectors name? Yes

Sample Preservation

21. Does the COC or field labels indicate the samples were preserved? No
22. Are sample(s) correctly preserved? NA
24. Is lab filtration required and/or requested for dissolved metals? No

Multiphase Sample Matrix

26. Does the sample have more than one phase, i.e., multiphase? No
27. If yes, does the COC specify which phase(s) is to be analyzed? NA

Subcontract Laboratory

28. Are samples required to get sent to a subcontract laboratory? No
29. Was a subcontract laboratory specified by the client and if so who? NA Subcontract Lab: NA

Client Instruction

Signature of client authorizing changes to the COC or sample disposition.

Date



envirotech Inc.

Report to:
Kate Kaufman



5796 U.S. Hwy 64
Farmington, NM 87401

Phone: (505) 632-1881
Envirotech-inc.com



envirotech

Practical Solutions for a Better Tomorrow

Analytical Report

Hilcorp Energy Co

Project Name: San Juan 28-4 #26A

Work Order: E509260

Job Number: 17051-0002

Received: 9/23/2025

Revision: 1

Report Reviewed By:

Walter Hinchman
Laboratory Director
9/25/25

Envirotech Inc. certifies the test results meet all requirements of TNI unless noted otherwise.
Statement of Data Authenticity: Envirotech Inc. attests the data reported has not been altered in any way.
Partial or incomplete reproduction of this report is prohibited, unless approved by Envirotech Inc.
Envirotech Inc. holds the Utah TNI certification NM00979 for data reported.
Envirotech Inc. holds the Texas TNI certification T104704557 for data reported.

Date Reported: 9/25/25

Kate Kaufman
PO Box 61529
Houston, TX 77208



Project Name: San Juan 28-4 #26A
Workorder: E509260
Date Received: 9/23/2025 3:12:00PM

Kate Kaufman,

Thank you for choosing Envirotech, Inc. as your analytical testing laboratory for the sample(s) received on, 9/23/2025 3:12:00PM, under the Project Name: San Juan 28-4 #26A.

The analytical test results summarized in this report with the Project Name: San Juan 28-4 #26A apply to the individual samples collected, identified and submitted bearing the project name on the enclosed chain-of-custody. Subcontracted sample analyses not conducted by Envirotech, Inc., are attached in full as issued by the subcontract laboratory.

Please review the Chain-of-Custody (COC) and Sample Receipt Checklist (SRC) for any issues regarding sample receipt temperature, containers, preservation etc. To best understand your test results, review the entire report summarizing your sample data and the associated quality control batch data.

All reported data in this analytical report were analyzed according to the referenced method(s) and are in compliance with the latest NELAC/TNI standards, unless otherwise noted. Samples or analytical quality control parameters not meeting specific QC criteria are qualified with a data flag. Data flag definitions are located in the Notes and Definitions section of this analytical report.

If you have any questions concerning this report, please feel free to contact Envirotech, Inc.

Respectfully,

Walter Hinchman
Laboratory Director
Office: 505-632-1881
Cell: 775-287-1762
whinchman@envirotech-inc.com

Raina Schwanz
Laboratory Administrator
Office: 505-632-1881
rainaschwanz@envirotech-inc.com

Field Offices:

Southern New Mexico Area

Lynn Jarboe
Laboratory Technical Representative
Office: 505-421-LABS(5227)
Cell: 505-320-4759
ljjarboe@envirotech-inc.com

Michelle Gonzales
Client Representative
Office: 505-421-LABS(5227)
Cell: 505-947-8222
mgonzaless@envirotech-inc.com

Envirotech Web Address: www.envirotech-inc.com

Table of Contents

Title Page	1
Cover Page	2
Table of Contents	3
Sample Summary	4
Sample Data	5
SS01	5
SS02	6
SS03	7
SS04	8
QC Summary Data	9
QC - Volatile Organics by EPA 8021B	9
QC - Nonhalogenated Organics by EPA 8015D - GRO	10
QC - Nonhalogenated Organics by EPA 8015D - DRO/ORO	11
Definitions and Notes	12
Chain of Custody etc.	13

Sample Summary

Hilcorp Energy Co	Project Name:	San Juan 28-4 #26A	Reported:
PO Box 61529	Project Number:	17051-0002	
Houston TX, 77208	Project Manager:	Kate Kaufman	09/25/25 15:12

Client Sample ID	Lab Sample ID	Matrix	Sampled	Received	Container
SS01	E509260-01A	Soil	09/23/25	09/23/25	Glass Jar, 4 oz.
SS02	E509260-02A	Soil	09/23/25	09/23/25	Glass Jar, 4 oz.
SS03	E509260-03A	Soil	09/23/25	09/23/25	Glass Jar, 4 oz.
SS04	E509260-04A	Soil	09/23/25	09/23/25	Glass Jar, 4 oz.



Sample Data

Hilcorp Energy Co
PO Box 61529
Houston TX, 77208

Project Name: San Juan 28-4 #26A
Project Number: 17051-0002
Project Manager: Kate Kaufman

Reported:
9/25/2025 3:12:07PM

SS01

E509260-01

Analyte	Result	Reporting Limit	Dilution	Prepared	Analyzed	Notes
Volatile Organics by EPA 8021B	mg/kg	mg/kg	Analyst: SL		Batch: 2539047	
Benzene	ND	0.0250	1	09/23/25	09/24/25	
Ethylbenzene	ND	0.0250	1	09/23/25	09/24/25	
Toluene	ND	0.0250	1	09/23/25	09/24/25	
o-Xylene	ND	0.0250	1	09/23/25	09/24/25	
p,m-Xylene	ND	0.0500	1	09/23/25	09/24/25	
Total Xylenes	ND	0.0250	1	09/23/25	09/24/25	
<i>Surrogate: 4-Bromochlorobenzene-PID</i>		101 %	70-130	09/23/25	09/24/25	
Nonhalogenated Organics by EPA 8015D - GRO	mg/kg	mg/kg	Analyst: SL		Batch: 2539047	
Gasoline Range Organics (C6-C10)	ND	20.0	1	09/23/25	09/24/25	
<i>Surrogate: 1-Chloro-4-fluorobenzene-FID</i>		87.3 %	70-130	09/23/25	09/24/25	
Nonhalogenated Organics by EPA 8015D - DRO/ORO	mg/kg	mg/kg	Analyst: HM		Batch: 2539081	
Diesel Range Organics (C10-C28)	ND	25.0	1	09/24/25	09/24/25	
Oil Range Organics (C28-C36)	ND	50.0	1	09/24/25	09/24/25	
<i>Surrogate: n-Nonane</i>		91.2 %	61-141	09/24/25	09/24/25	



Sample Data

Hilcorp Energy Co
PO Box 61529
Houston TX, 77208

Project Name: San Juan 28-4 #26A
Project Number: 17051-0002
Project Manager: Kate Kaufman

Reported:
9/25/2025 3:12:07PM

SS02

E509260-02

Analyte	Result	Reporting Limit	Dilution	Prepared	Analyzed	Notes
Volatile Organics by EPA 8021B		mg/kg	mg/kg	Analyst: SL		Batch: 2539047
Benzene	ND	0.0250	1	09/23/25	09/24/25	
Ethylbenzene	ND	0.0250	1	09/23/25	09/24/25	
Toluene	ND	0.0250	1	09/23/25	09/24/25	
o-Xylene	ND	0.0250	1	09/23/25	09/24/25	
p,m-Xylene	ND	0.0500	1	09/23/25	09/24/25	
Total Xylenes	ND	0.0250	1	09/23/25	09/24/25	
<i>Surrogate: 4-Bromochlorobenzene-PID</i>		101 %	70-130	09/23/25	09/24/25	
Nonhalogenated Organics by EPA 8015D - GRO		mg/kg	mg/kg	Analyst: SL		Batch: 2539047
Gasoline Range Organics (C6-C10)	ND	20.0	1	09/23/25	09/24/25	
<i>Surrogate: 1-Chloro-4-fluorobenzene-FID</i>		86.8 %	70-130	09/23/25	09/24/25	
Nonhalogenated Organics by EPA 8015D - DRO/ORO		mg/kg	mg/kg	Analyst: HM		Batch: 2539081
Diesel Range Organics (C10-C28)	ND	25.0	1	09/24/25	09/24/25	
Oil Range Organics (C28-C36)	ND	50.0	1	09/24/25	09/24/25	
<i>Surrogate: n-Nonane</i>		91.6 %	61-141	09/24/25	09/24/25	



Sample Data

Hilcorp Energy Co
PO Box 61529
Houston TX, 77208

Project Name: San Juan 28-4 #26A
Project Number: 17051-0002
Project Manager: Kate Kaufman

Reported:
9/25/2025 3:12:07PM

SS03

E509260-03

Analyte	Result	Reporting Limit	Dilution	Prepared	Analyzed	Notes
Volatile Organics by EPA 8021B		mg/kg	mg/kg	Analyst: SL		Batch: 2539047
Benzene	ND	0.0250	1	09/23/25	09/24/25	
Ethylbenzene	ND	0.0250	1	09/23/25	09/24/25	
Toluene	ND	0.0250	1	09/23/25	09/24/25	
o-Xylene	ND	0.0250	1	09/23/25	09/24/25	
p,m-Xylene	ND	0.0500	1	09/23/25	09/24/25	
Total Xylenes	ND	0.0250	1	09/23/25	09/24/25	
<i>Surrogate: 4-Bromochlorobenzene-PID</i>		102 %	70-130	09/23/25	09/24/25	
Nonhalogenated Organics by EPA 8015D - GRO		mg/kg	mg/kg	Analyst: SL		Batch: 2539047
Gasoline Range Organics (C6-C10)	ND	20.0	1	09/23/25	09/24/25	
<i>Surrogate: 1-Chloro-4-fluorobenzene-FID</i>		87.2 %	70-130	09/23/25	09/24/25	
Nonhalogenated Organics by EPA 8015D - DRO/ORO		mg/kg	mg/kg	Analyst: HM		Batch: 2539081
Diesel Range Organics (C10-C28)	37.2	25.0	1	09/24/25	09/24/25	T17
Oil Range Organics (C28-C36)	ND	50.0	1	09/24/25	09/24/25	
<i>Surrogate: n-Nonane</i>		95.9 %	61-141	09/24/25	09/24/25	



Sample Data

Hilcorp Energy Co
PO Box 61529
Houston TX, 77208

Project Name: San Juan 28-4 #26A
Project Number: 17051-0002
Project Manager: Kate Kaufman

Reported:
9/25/2025 3:12:07PM

SS04

E509260-04

Analyte	Result	Reporting Limit	Dilution	Prepared	Analyzed	Notes
Volatile Organics by EPA 8021B		mg/kg	mg/kg	Analyst: SL		Batch: 2539047
Benzene	ND	0.0250	1	09/23/25	09/24/25	
Ethylbenzene	ND	0.0250	1	09/23/25	09/24/25	
Toluene	ND	0.0250	1	09/23/25	09/24/25	
o-Xylene	ND	0.0250	1	09/23/25	09/24/25	
p,m-Xylene	ND	0.0500	1	09/23/25	09/24/25	
Total Xylenes	ND	0.0250	1	09/23/25	09/24/25	
<i>Surrogate: 4-Bromochlorobenzene-PID</i>		102 %	70-130	09/23/25	09/24/25	
Nonhalogenated Organics by EPA 8015D - GRO		mg/kg	mg/kg	Analyst: SL		Batch: 2539047
Gasoline Range Organics (C6-C10)	ND	20.0	1	09/23/25	09/24/25	
<i>Surrogate: 1-Chloro-4-fluorobenzene-FID</i>		86.3 %	70-130	09/23/25	09/24/25	
Nonhalogenated Organics by EPA 8015D - DRO/ORO		mg/kg	mg/kg	Analyst: HM		Batch: 2539081
Diesel Range Organics (C10-C28)	ND	25.0	1	09/24/25	09/24/25	
Oil Range Organics (C28-C36)	ND	50.0	1	09/24/25	09/24/25	
<i>Surrogate: n-Nonane</i>		93.6 %	61-141	09/24/25	09/24/25	



QC Summary Data

Hilcorp Energy Co	Project Name:	San Juan 28-4 #26A	Reported:
PO Box 61529	Project Number:	17051-0002	
Houston TX, 77208	Project Manager:	Kate Kaufman	9/25/2025 3:12:07PM

Volatile Organics by EPA 8021B

Analyst: SL

Analyte	Result mg/kg	Reporting Limit mg/kg	Spike Level mg/kg	Source Result mg/kg	Rec %	Rec Limits %	RPD %	RPD Limit %	Notes
---------	-----------------	-----------------------------	-------------------------	---------------------------	----------	--------------------	----------	-------------------	-------

Blank (2539047-BLK1)

Prepared: 09/23/25 Analyzed: 09/24/25

Benzene	ND	0.0250							
Ethylbenzene	ND	0.0250							
Toluene	ND	0.0250							
o-Xylene	ND	0.0250							
p,m-Xylene	ND	0.0500							
Total Xylenes	ND	0.0250							
Surrogate: 4-Bromochlorobenzene-PID	7.85		8.00		98.1	70-130			

LCS (2539047-BS1)

Prepared: 09/23/25 Analyzed: 09/24/25

Benzene	4.92	0.0250	5.00		98.4	70-130			
Ethylbenzene	4.88	0.0250	5.00		97.7	70-130			
Toluene	4.91	0.0250	5.00		98.3	70-130			
o-Xylene	4.94	0.0250	5.00		98.8	70-130			
p,m-Xylene	9.89	0.0500	10.0		98.9	70-130			
Total Xylenes	14.8	0.0250	15.0		98.9	70-130			
Surrogate: 4-Bromochlorobenzene-PID	7.92		8.00		98.9	70-130			

Matrix Spike (2539047-MS1)

Source: E509235-02

Prepared: 09/23/25 Analyzed: 09/24/25

Benzene	4.37	0.0250	5.00	ND	87.3	70-130			
Ethylbenzene	4.31	0.0250	5.00	ND	86.1	70-130			
Toluene	4.34	0.0250	5.00	ND	86.8	70-130			
o-Xylene	4.43	0.0250	5.00	ND	88.6	70-130			
p,m-Xylene	8.75	0.0500	10.0	ND	87.5	70-130			
Total Xylenes	13.2	0.0250	15.0	ND	87.9	70-130			
Surrogate: 4-Bromochlorobenzene-PID	8.31		8.00		104	70-130			

Matrix Spike Dup (2539047-MSD1)

Source: E509235-02

Prepared: 09/23/25 Analyzed: 09/24/25

Benzene	4.96	0.0250	5.00	ND	99.1	70-130	12.6	27	
Ethylbenzene	4.93	0.0250	5.00	ND	98.6	70-130	13.5	26	
Toluene	4.96	0.0250	5.00	ND	99.1	70-130	13.2	20	
o-Xylene	5.02	0.0250	5.00	ND	100	70-130	12.4	25	
p,m-Xylene	9.97	0.0500	10.0	ND	99.7	70-130	13.1	23	
Total Xylenes	15.0	0.0250	15.0	ND	99.9	70-130	12.8	26	
Surrogate: 4-Bromochlorobenzene-PID	8.27		8.00		103	70-130			



QC Summary Data

Hilcorp Energy Co	Project Name:	San Juan 28-4 #26A	Reported:
PO Box 61529	Project Number:	17051-0002	
Houston TX, 77208	Project Manager:	Kate Kaufman	9/25/2025 3:12:07PM

Nonhalogenated Organics by EPA 8015D - GRO

Analyst: SL

Analyte	Result mg/kg	Reporting Limit mg/kg	Spike Level mg/kg	Source Result mg/kg	Rec %	Rec Limits %	RPD %	RPD Limit %	Notes
---------	-----------------	-----------------------------	-------------------------	---------------------------	----------	--------------------	----------	-------------------	-------

Blank (2539047-BLK1)

Prepared: 09/23/25 Analyzed: 09/24/25

Gasoline Range Organics (C6-C10)	ND	20.0							
Surrogate: 1-Chloro-4-fluorobenzene-FID	6.98		8.00		87.3	70-130			

LCS (2539047-BS2)

Prepared: 09/23/25 Analyzed: 09/24/25

Gasoline Range Organics (C6-C10)	44.7	20.0	50.0		89.4	70-130			
Surrogate: 1-Chloro-4-fluorobenzene-FID	7.16		8.00		89.4	70-130			

Matrix Spike (2539047-MS2)

Source: E509235-02

Prepared: 09/23/25 Analyzed: 09/24/25

Gasoline Range Organics (C6-C10)	46.3	20.0	50.0	ND	92.5	70-130			
Surrogate: 1-Chloro-4-fluorobenzene-FID	7.21		8.00		90.1	70-130			

Matrix Spike Dup (2539047-MSD2)

Source: E509235-02

Prepared: 09/23/25 Analyzed: 09/24/25

Gasoline Range Organics (C6-C10)	47.5	20.0	50.0	ND	95.1	70-130	2.71	20	
Surrogate: 1-Chloro-4-fluorobenzene-FID	7.03		8.00		87.9	70-130			



QC Summary Data

Hilcorp Energy Co	Project Name:	San Juan 28-4 #26A	Reported:
PO Box 61529	Project Number:	17051-0002	
Houston TX, 77208	Project Manager:	Kate Kaufman	9/25/2025 3:12:07PM

Nonhalogenated Organics by EPA 8015D - DRO/ORO

Analyst: HM

Analyte	Result mg/kg	Reporting Limit mg/kg	Spike Level mg/kg	Source Result mg/kg	Rec %	Rec Limits %	RPD %	RPD Limit %	Notes
---------	-----------------	-----------------------------	-------------------------	---------------------------	----------	--------------------	----------	-------------------	-------

Blank (2539081-BLK1)					Prepared: 09/24/25 Analyzed: 09/24/25				
Diesel Range Organics (C10-C28)	ND	25.0							
Oil Range Organics (C28-C36)	ND	50.0							
Surrogate: n-Nonane	46.3		50.0		92.7	61-141			

LCS (2539081-BS1)					Prepared: 09/24/25 Analyzed: 09/24/25				
Diesel Range Organics (C10-C28)	262	25.0	250		105	66-144			
Surrogate: n-Nonane	42.5		50.0		84.9	61-141			

Matrix Spike (2539081-MS1)					Source: E509260-01		Prepared: 09/24/25 Analyzed: 09/24/25		
Diesel Range Organics (C10-C28)	274	25.0	250	ND	110	56-156			
Surrogate: n-Nonane	46.2		50.0		92.4	61-141			

Matrix Spike Dup (2539081-MSD1)					Source: E509260-01		Prepared: 09/24/25 Analyzed: 09/24/25		
Diesel Range Organics (C10-C28)	275	25.0	250	ND	110	56-156	0.278	20	
Surrogate: n-Nonane	46.0		50.0		92.0	61-141			

QC Summary Report Comment:
Calculations are based off of the raw (non-rounded) data. However, for reporting purposes all QC data is rounded to three significant figures.
Therefore, hand calculated values may differ slightly.



Definitions and Notes

Hilcorp Energy Co	Project Name:	San Juan 28-4 #26A	
PO Box 61529	Project Number:	17051-0002	Reported:
Houston TX, 77208	Project Manager:	Kate Kaufman	09/25/25 15:12

- T17 The sample chromatographic pattern does not resemble the typical fuel standard used for quantitation.
- ND Analyte NOT DETECTED at or above the reporting limit
- NR Not Reported
- RPD Relative Percent Difference
- DNI Did Not Ignite
- DNR Did not react with the addition of acid or base.

Note (1): Methods marked with ** are non-accredited methods.

Note (2): Soil data is reported on an "as received" weight basis, unless reported otherwise.



Chain of Custody

Page 1 of 1[illegible]

Envirotech Analytical Laboratory

Printed: 9/23/2025 3:39:02PM

Sample Receipt Checklist (SRC)

Instructions: Please take note of any NO checkmarks.

If we receive no response concerning these items within 24 hours of the date of this notice, all the samples will be analyzed as requested.

Client:	Hilcorp Energy Co	Date Received:	09/23/25 15:12	Work Order ID:	E509260
Phone:	-	Date Logged In:	09/23/25 15:14	Logged In By:	Caitlin Mars
Email:		Due Date:	09/24/25 17:00 (1 day TAT)		

Chain of Custody (COC)

1. Does the sample ID match the COC? Yes
2. Does the number of samples per sampling site location match the COC? Yes
3. Were samples dropped off by client or carrier? Yes
4. Was the COC complete, i.e., signatures, dates/times, requested analyses? Yes
5. Were all samples received within holding time? Yes

Note: Analysis, such as pH which should be conducted in the field, i.e., 15 minute hold time, are not included in this discussion.

Carrier: M PollockComments/ResolutionSample Turn Around Time (TAT)

6. Did the COC indicate standard TAT, or Expedited TAT? Yes

Sample Cooler

7. Was a sample cooler received? Yes
8. If yes, was cooler received in good condition? Yes
9. Was the sample(s) received intact, i.e., not broken? Yes
10. Were custody/security seals present? No
11. If yes, were custody/security seals intact? NA
12. Was the sample received on ice? Yes

Note: Thermal preservation is not required, if samples are received within 15 minutes of sampling

13. See COC for individual sample temps. Samples outside of 0°C-6°C will be recorded in comments.

Sample Container

14. Are aqueous VOC samples present? No
15. Are VOC samples collected in VOA Vials? NA
16. Is the head space less than 6-8 mm (pea sized or less)? NA
17. Was a trip blank (TB) included for VOC analyses? NA
18. Are non-VOC samples collected in the correct containers? Yes
19. Is the appropriate volume/weight or number of sample containers collected? Yes

Field Label

20. Were field sample labels filled out with the minimum information:
 - Sample ID? Yes
 - Date/Time Collected? Yes
 - Collectors name? Yes

Sample Preservation

21. Does the COC or field labels indicate the samples were preserved? No
22. Are sample(s) correctly preserved? NA
24. Is lab filtration required and/or requested for dissolved metals? No

Multiphase Sample Matrix

26. Does the sample have more than one phase, i.e., multiphase? No
27. If yes, does the COC specify which phase(s) is to be analyzed? NA

Subcontract Laboratory

28. Are samples required to get sent to a subcontract laboratory? No
29. Was a subcontract laboratory specified by the client and if so who? NA Subcontract Lab: NA

Client Instruction

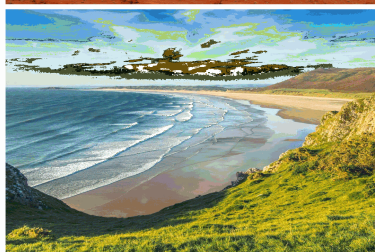
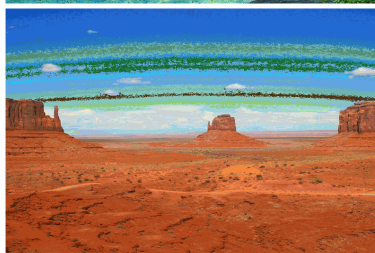
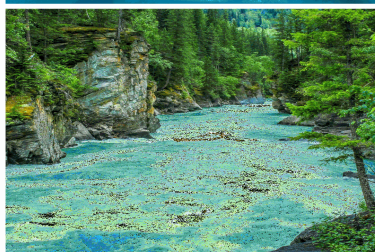
Signature of client authorizing changes to the COC or sample disposition.

Date



envirotech Inc.

Report to:
Kate Kaufman



envirotech

Practical Solutions for a Better Tomorrow

Analytical Report

Hilcorp Energy Co

Project Name: San Juan 28-4 #26A

Work Order: E509286

Job Number: 17051-0002

Received: 9/25/2025

Revision: 2

Report Reviewed By:

Walter Hinchman
Laboratory Director
9/29/25

5796 U.S. Hwy 64
Farmington, NM 87401

Phone: (505) 632-1881
Envirotech-inc.com



Envirotech Inc. certifies the test results meet all requirements of TNI unless noted otherwise.
Statement of Data Authenticity: Envirotech Inc. attests the data reported has not been altered in any way.
Partial or incomplete reproduction of this report is prohibited, unless approved by Envirotech Inc.
Envirotech Inc. holds the Utah TNI certification NM00979 for data reported.
Envirotech Inc. holds the Texas TNI certification T104704557 for data reported.

Date Reported: 9/29/25

Kate Kaufman
PO Box 61529
Houston, TX 77208



Project Name: San Juan 28-4 #26A
Workorder: E509286
Date Received: 9/25/2025 12:33:00PM

Kate Kaufman,

Thank you for choosing Envirotech, Inc. as your analytical testing laboratory for the sample(s) received on, 9/25/2025 12:33:00PM, under the Project Name: San Juan 28-4 #26A.

The analytical test results summarized in this report with the Project Name: San Juan 28-4 #26A apply to the individual samples collected, identified and submitted bearing the project name on the enclosed chain-of-custody. Subcontracted sample analyses not conducted by Envirotech, Inc., are attached in full as issued by the subcontract laboratory.

Please review the Chain-of-Custody (COC) and Sample Receipt Checklist (SRC) for any issues regarding sample receipt temperature, containers, preservation etc. To best understand your test results, review the entire report summarizing your sample data and the associated quality control batch data.

All reported data in this analytical report were analyzed according to the referenced method(s) and are in compliance with the latest NELAC/TNI standards, unless otherwise noted. Samples or analytical quality control parameters not meeting specific QC criteria are qualified with a data flag. Data flag definitions are located in the Notes and Definitions section of this analytical report.

If you have any questions concerning this report, please feel free to contact Envirotech, Inc.

Respectfully,

Walter Hinchman
Laboratory Director
Office: 505-632-1881
Cell: 775-287-1762
whinchman@envirotech-inc.com

Raina Schwanz
Laboratory Administrator
Office: 505-632-1881
rainaschwanz@envirotech-inc.com

Field Offices:

Southern New Mexico Area

Lynn Jarboe
Laboratory Technical Representative
Office: 505-421-LABS(5227)
Cell: 505-320-4759
ljjarboe@envirotech-inc.com

Michelle Gonzales
Client Representative
Office: 505-421-LABS(5227)
Cell: 505-947-8222
mgonzaless@envirotech-inc.com

Envirotech Web Address: www.envirotech-inc.com

Table of Contents

Title Page	1
Cover Page	2
Table of Contents	3
Sample Summary	4
Sample Data	5
SP01	5
SP02	6
SP03	7
SP04	8
SP05	9
SP06	10
SP07	11
SP08	12
SP09	13
SP10	14
SP11	15
SP12	16
QC Summary Data	17
QC - Volatile Organics by EPA 8021B	17
QC - Nonhalogenated Organics by EPA 8015D - GRO	18
QC - Nonhalogenated Organics by EPA 8015D - DRO/ORO	19
Definitions and Notes	20
Chain of Custody etc.	21

Sample Summary

Hilcorp Energy Co	Project Name:	San Juan 28-4 #26A	Reported: 09/29/25 16:46
PO Box 61529	Project Number:	17051-0002	
Houston TX, 77208	Project Manager:	Kate Kaufman	

Client Sample ID	Lab Sample ID	Matrix	Sampled	Received	Container
SP01	E509286-01A	Soil	09/25/25	09/25/25	Glass Jar, 4 oz.
SP02	E509286-02A	Soil	09/25/25	09/25/25	Glass Jar, 4 oz.
SP03	E509286-03A	Soil	09/25/25	09/25/25	Glass Jar, 4 oz.
SP04	E509286-04A	Soil	09/25/25	09/25/25	Glass Jar, 4 oz.
SP05	E509286-05A	Soil	09/25/25	09/25/25	Glass Jar, 4 oz.
SP06	E509286-06A	Soil	09/25/25	09/25/25	Glass Jar, 4 oz.
SP07	E509286-07A	Soil	09/25/25	09/25/25	Glass Jar, 4 oz.
SP08	E509286-08A	Soil	09/25/25	09/25/25	Glass Jar, 4 oz.
SP09	E509286-09A	Soil	09/25/25	09/25/25	Glass Jar, 4 oz.
SP10	E509286-10A	Soil	09/25/25	09/25/25	Glass Jar, 4 oz.
SP11	E509286-11A	Soil	09/25/25	09/25/25	Glass Jar, 4 oz.
SP12	E509286-12A	Soil	09/25/25	09/25/25	Glass Jar, 4 oz.



Sample Data

Hilcorp Energy Co
PO Box 61529
Houston TX, 77208

Project Name: San Juan 28-4 #26A
Project Number: 17051-0002
Project Manager: Kate Kaufman

Reported:
9/29/2025 4:46:54PM

SP01

E509286-01

Analyte	Result	Reporting Limit	Dilution	Prepared	Analyzed	Notes
Volatile Organics by EPA 8021B	mg/kg	mg/kg	Analyst: BA		Batch: 2539136	
Benzene	ND	0.0250	1	09/25/25	09/26/25	
Ethylbenzene	ND	0.0250	1	09/25/25	09/26/25	
Toluene	0.0793	0.0250	1	09/25/25	09/26/25	
o-Xylene	0.0387	0.0250	1	09/25/25	09/26/25	
p,m-Xylene	0.0979	0.0500	1	09/25/25	09/26/25	
Total Xylenes	0.137	0.0250	1	09/25/25	09/26/25	
<i>Surrogate: 4-Bromochlorobenzene-PID</i>						
	97.1 %	70-130		09/25/25	09/26/25	
Nonhalogenated Organics by EPA 8015D - GRO	mg/kg	mg/kg	Analyst: BA		Batch: 2539136	
Gasoline Range Organics (C6-C10)	ND	20.0	1	09/25/25	09/26/25	
<i>Surrogate: 1-Chloro-4-fluorobenzene-FID</i>						
	88.4 %	70-130		09/25/25	09/26/25	
Nonhalogenated Organics by EPA 8015D - DRO/ORO	mg/kg	mg/kg	Analyst: NV		Batch: 2539141	
Diesel Range Organics (C10-C28)	ND	25.0	1	09/25/25	09/25/25	
Oil Range Organics (C28-C36)	ND	50.0	1	09/25/25	09/25/25	
<i>Surrogate: n-Nonane</i>						
	76.2 %	61-141		09/25/25	09/25/25	



Sample Data

Hilcorp Energy Co
PO Box 61529
Houston TX, 77208

Project Name: San Juan 28-4 #26A
Project Number: 17051-0002
Project Manager: Kate Kaufman

Reported:
9/29/2025 4:46:54PM

SP02

E509286-02

Analyte	Result	Reporting Limit	Dilution	Prepared	Analyzed	Notes
Volatile Organics by EPA 8021B		mg/kg	mg/kg	Analyst: BA		Batch: 2539136
Benzene	ND	0.0250	1	09/25/25	09/26/25	
Ethylbenzene	ND	0.0250	1	09/25/25	09/26/25	
Toluene	0.0880	0.0250	1	09/25/25	09/26/25	
o-Xylene	0.0522	0.0250	1	09/25/25	09/26/25	
p,m-Xylene	0.125	0.0500	1	09/25/25	09/26/25	
Total Xylenes	0.177	0.0250	1	09/25/25	09/26/25	
<i>Surrogate: 4-Bromochlorobenzene-PID</i>		96.2 %	70-130	09/25/25	09/26/25	
Nonhalogenated Organics by EPA 8015D - GRO		mg/kg	mg/kg	Analyst: BA		Batch: 2539136
Gasoline Range Organics (C6-C10)	33.0	20.0	1	09/25/25	09/26/25	
<i>Surrogate: 1-Chloro-4-fluorobenzene-FID</i>		89.4 %	70-130	09/25/25	09/26/25	
Nonhalogenated Organics by EPA 8015D - DRO/ORO		mg/kg	mg/kg	Analyst: NV		Batch: 2539141
Diesel Range Organics (C10-C28)	ND	25.0	1	09/25/25	09/25/25	
Oil Range Organics (C28-C36)	ND	50.0	1	09/25/25	09/25/25	
<i>Surrogate: n-Nonane</i>		89.5 %	61-141	09/25/25	09/25/25	



Sample Data

Hilcorp Energy Co
PO Box 61529
Houston TX, 77208

Project Name: San Juan 28-4 #26A
Project Number: 17051-0002
Project Manager: Kate Kaufman

Reported:
9/29/2025 4:46:54PM

SP03

E509286-03

Analyte	Result	Reporting Limit	Dilution	Prepared	Analyzed	Notes
Volatile Organics by EPA 8021B		mg/kg	mg/kg	Analyst: BA		Batch: 2539136
Benzene	ND	0.0250	1	09/25/25	09/26/25	
Ethylbenzene	ND	0.0250	1	09/25/25	09/26/25	
Toluene	ND	0.0250	1	09/25/25	09/26/25	
o-Xylene	ND	0.0250	1	09/25/25	09/26/25	
p,m-Xylene	ND	0.0500	1	09/25/25	09/26/25	
Total Xylenes	ND	0.0250	1	09/25/25	09/26/25	
<i>Surrogate: 4-Bromochlorobenzene-PID</i>		95.4 %	70-130	09/25/25	09/26/25	
Nonhalogenated Organics by EPA 8015D - GRO		mg/kg	mg/kg	Analyst: BA		Batch: 2539136
Gasoline Range Organics (C6-C10)	ND	20.0	1	09/25/25	09/26/25	
<i>Surrogate: 1-Chloro-4-fluorobenzene-FID</i>		85.8 %	70-130	09/25/25	09/26/25	
Nonhalogenated Organics by EPA 8015D - DRO/ORO		mg/kg	mg/kg	Analyst: NV		Batch: 2539141
Diesel Range Organics (C10-C28)	ND	25.0	1	09/25/25	09/26/25	
Oil Range Organics (C28-C36)	ND	50.0	1	09/25/25	09/26/25	
<i>Surrogate: n-Nonane</i>		86.0 %	61-141	09/25/25	09/26/25	



Sample Data

Hilcorp Energy Co
PO Box 61529
Houston TX, 77208

Project Name: San Juan 28-4 #26A
Project Number: 17051-0002
Project Manager: Kate Kaufman

Reported:
9/29/2025 4:46:54PM

SP04

E509286-04

Analyte	Result	Reporting Limit	Dilution	Prepared	Analyzed	Notes
Volatile Organics by EPA 8021B						
	mg/kg	mg/kg	Analyst: BA		Batch: 2539136	
Benzene	ND	0.0250	1	09/25/25	09/26/25	
Ethylbenzene	0.0275	0.0250	1	09/25/25	09/26/25	
Toluene	0.139	0.0250	1	09/25/25	09/26/25	
o-Xylene	0.0554	0.0250	1	09/25/25	09/26/25	
p,m-Xylene	0.191	0.0500	1	09/25/25	09/26/25	
Total Xylenes	0.246	0.0250	1	09/25/25	09/26/25	
<i>Surrogate: 4-Bromochlorobenzene-PID</i>						
	95.9 %	70-130		09/25/25	09/26/25	
Nonhalogenated Organics by EPA 8015D - GRO						
	mg/kg	mg/kg	Analyst: BA		Batch: 2539136	
Gasoline Range Organics (C6-C10)	26.2	20.0	1	09/25/25	09/26/25	
<i>Surrogate: 1-Chloro-4-fluorobenzene-FID</i>						
	87.8 %	70-130		09/25/25	09/26/25	
Nonhalogenated Organics by EPA 8015D - DRO/ORO						
	mg/kg	mg/kg	Analyst: NV		Batch: 2539141	
Diesel Range Organics (C10-C28)	ND	25.0	1	09/25/25	09/26/25	
Oil Range Organics (C28-C36)	ND	50.0	1	09/25/25	09/26/25	
<i>Surrogate: n-Nonane</i>						
	78.9 %	61-141		09/25/25	09/26/25	



Sample Data

Hilcorp Energy Co
PO Box 61529
Houston TX, 77208

Project Name: San Juan 28-4 #26A
Project Number: 17051-0002
Project Manager: Kate Kaufman

Reported:
9/29/2025 4:46:54PM

SP05

E509286-05

Analyte	Result	Reporting Limit	Dilution	Prepared	Analyzed	Notes
Volatile Organics by EPA 8021B		mg/kg	mg/kg	Analyst: BA		Batch: 2539136
Benzene	ND	0.0250	1	09/25/25	09/26/25	
Ethylbenzene	ND	0.0250	1	09/25/25	09/26/25	
Toluene	0.0300	0.0250	1	09/25/25	09/26/25	
o-Xylene	ND	0.0250	1	09/25/25	09/26/25	
p,m-Xylene	ND	0.0500	1	09/25/25	09/26/25	
Total Xylenes	ND	0.0250	1	09/25/25	09/26/25	
<i>Surrogate: 4-Bromochlorobenzene-PID</i>		95.9 %	70-130	09/25/25	09/26/25	
Nonhalogenated Organics by EPA 8015D - GRO		mg/kg	mg/kg	Analyst: BA		Batch: 2539136
Gasoline Range Organics (C6-C10)	ND	20.0	1	09/25/25	09/26/25	
<i>Surrogate: 1-Chloro-4-fluorobenzene-FID</i>		85.5 %	70-130	09/25/25	09/26/25	
Nonhalogenated Organics by EPA 8015D - DRO/ORO		mg/kg	mg/kg	Analyst: HM		Batch: 2539141
Diesel Range Organics (C10-C28)	ND	25.0	1	09/25/25	09/26/25	
Oil Range Organics (C28-C36)	ND	50.0	1	09/25/25	09/26/25	
<i>Surrogate: n-Nonane</i>		76.6 %	61-141	09/25/25	09/26/25	



Sample Data

Hilcorp Energy Co
PO Box 61529
Houston TX, 77208

Project Name: San Juan 28-4 #26A
Project Number: 17051-0002
Project Manager: Kate Kaufman

Reported:
9/29/2025 4:46:54PM

SP06

E509286-06

Analyte	Result	Reporting Limit	Dilution	Prepared	Analyzed	Notes
Volatile Organics by EPA 8021B		mg/kg	mg/kg	Analyst: BA		Batch: 2539136
Benzene	ND	0.0250	1	09/25/25	09/26/25	
Ethylbenzene	ND	0.0250	1	09/25/25	09/26/25	
Toluene	0.0601	0.0250	1	09/25/25	09/26/25	
o-Xylene	0.0368	0.0250	1	09/25/25	09/26/25	
p,m-Xylene	0.0780	0.0500	1	09/25/25	09/26/25	
Total Xylenes	0.115	0.0250	1	09/25/25	09/26/25	
<i>Surrogate: 4-Bromochlorobenzene-PID</i>		100 %	70-130	09/25/25	09/26/25	
Nonhalogenated Organics by EPA 8015D - GRO		mg/kg	mg/kg	Analyst: BA		Batch: 2539136
Gasoline Range Organics (C6-C10)	ND	20.0	1	09/25/25	09/26/25	
<i>Surrogate: 1-Chloro-4-fluorobenzene-FID</i>		85.6 %	70-130	09/25/25	09/26/25	
Nonhalogenated Organics by EPA 8015D - DRO/ORO		mg/kg	mg/kg	Analyst: NV		Batch: 2539141
Diesel Range Organics (C10-C28)	ND	25.0	1	09/25/25	09/26/25	
Oil Range Organics (C28-C36)	ND	50.0	1	09/25/25	09/26/25	
<i>Surrogate: n-Nonane</i>		78.1 %	61-141	09/25/25	09/26/25	



Sample Data

Hilcorp Energy Co
PO Box 61529
Houston TX, 77208

Project Name: San Juan 28-4 #26A
Project Number: 17051-0002
Project Manager: Kate Kaufman

Reported:
9/29/2025 4:46:54PM

SP07

E509286-07

Analyte	Result	Reporting Limit	Dilution	Prepared	Analyzed	Notes
Volatile Organics by EPA 8021B		mg/kg	mg/kg	Analyst: BA		Batch: 2539136
Benzene	ND	0.0250	1	09/25/25	09/26/25	
Ethylbenzene	ND	0.0250	1	09/25/25	09/26/25	
Toluene	0.0490	0.0250	1	09/25/25	09/26/25	
o-Xylene	0.0574	0.0250	1	09/25/25	09/26/25	
p,m-Xylene	0.163	0.0500	1	09/25/25	09/26/25	
Total Xylenes	0.221	0.0250	1	09/25/25	09/26/25	
<i>Surrogate: 4-Bromochlorobenzene-PID</i>		111 %	70-130	09/25/25	09/26/25	
Nonhalogenated Organics by EPA 8015D - GRO		mg/kg	mg/kg	Analyst: BA		Batch: 2539136
Gasoline Range Organics (C6-C10)	22.7	20.0	1	09/25/25	09/26/25	
<i>Surrogate: 1-Chloro-4-fluorobenzene-FID</i>		90.2 %	70-130	09/25/25	09/26/25	
Nonhalogenated Organics by EPA 8015D - DRO/ORO		mg/kg	mg/kg	Analyst: NV		Batch: 2539141
Diesel Range Organics (C10-C28)	ND	25.0	1	09/25/25	09/26/25	
Oil Range Organics (C28-C36)	ND	50.0	1	09/25/25	09/26/25	
<i>Surrogate: n-Nonane</i>		83.8 %	61-141	09/25/25	09/26/25	



Sample Data

Hilcorp Energy Co
PO Box 61529
Houston TX, 77208

Project Name: San Juan 28-4 #26A
Project Number: 17051-0002
Project Manager: Kate Kaufman

Reported:
9/29/2025 4:46:54PM

SP08

E509286-08

Analyte	Result	Reporting Limit	Dilution	Prepared	Analyzed	Notes
Volatile Organics by EPA 8021B		mg/kg	mg/kg	Analyst: BA		Batch: 2539136
Benzene	ND	0.0250	1	09/25/25	09/26/25	
Ethylbenzene	ND	0.0250	1	09/25/25	09/26/25	
Toluene	0.0294	0.0250	1	09/25/25	09/26/25	
o-Xylene	0.0359	0.0250	1	09/25/25	09/26/25	
p,m-Xylene	0.0952	0.0500	1	09/25/25	09/26/25	
Total Xylenes	0.131	0.0250	1	09/25/25	09/26/25	
<i>Surrogate: 4-Bromochlorobenzene-PID</i>		112 %	70-130	09/25/25	09/26/25	
Nonhalogenated Organics by EPA 8015D - GRO		mg/kg	mg/kg	Analyst: BA		Batch: 2539136
Gasoline Range Organics (C6-C10)	ND	20.0	1	09/25/25	09/26/25	
<i>Surrogate: 1-Chloro-4-fluorobenzene-FID</i>		88.8 %	70-130	09/25/25	09/26/25	
Nonhalogenated Organics by EPA 8015D - DRO/ORO		mg/kg	mg/kg	Analyst: NV		Batch: 2539141
Diesel Range Organics (C10-C28)	ND	25.0	1	09/25/25	09/26/25	
Oil Range Organics (C28-C36)	ND	50.0	1	09/25/25	09/26/25	
<i>Surrogate: n-Nonane</i>		82.9 %	61-141	09/25/25	09/26/25	



Sample Data

Hilcorp Energy Co
PO Box 61529
Houston TX, 77208

Project Name: San Juan 28-4 #26A
Project Number: 17051-0002
Project Manager: Kate Kaufman

Reported:
9/29/2025 4:46:54PM

SP09

E509286-09

Analyte	Result	Reporting Limit	Dilution	Prepared	Analyzed	Notes
Volatile Organics by EPA 8021B		mg/kg	mg/kg	Analyst: BA		Batch: 2539136
Benzene	ND	0.0250	1	09/25/25	09/26/25	
Ethylbenzene	0.0266	0.0250	1	09/25/25	09/26/25	
Toluene	0.102	0.0250	1	09/25/25	09/26/25	
o-Xylene	0.0827	0.0250	1	09/25/25	09/26/25	
p,m-Xylene	0.300	0.0500	1	09/25/25	09/26/25	
Total Xylenes	0.383	0.0250	1	09/25/25	09/26/25	
<i>Surrogate: 4-Bromochlorobenzene-PID</i>		112 %	70-130	09/25/25	09/26/25	
Nonhalogenated Organics by EPA 8015D - GRO		mg/kg	mg/kg	Analyst: BA		Batch: 2539136
Gasoline Range Organics (C6-C10)	42.1	20.0	1	09/25/25	09/26/25	
<i>Surrogate: 1-Chloro-4-fluorobenzene-FID</i>		89.2 %	70-130	09/25/25	09/26/25	
Nonhalogenated Organics by EPA 8015D - DRO/ORO		mg/kg	mg/kg	Analyst: NV		Batch: 2539141
Diesel Range Organics (C10-C28)	ND	25.0	1	09/25/25	09/26/25	
Oil Range Organics (C28-C36)	ND	50.0	1	09/25/25	09/26/25	
<i>Surrogate: n-Nonane</i>		80.6 %	61-141	09/25/25	09/26/25	



Sample Data

Hilcorp Energy Co
PO Box 61529
Houston TX, 77208

Project Name: San Juan 28-4 #26A
Project Number: 17051-0002
Project Manager: Kate Kaufman

Reported:
9/29/2025 4:46:54PM

SP10

E509286-10

Analyte	Result	Reporting Limit	Dilution	Prepared	Analyzed	Notes
Volatile Organics by EPA 8021B		mg/kg	mg/kg	Analyst: BA		Batch: 2539136
Benzene	ND	0.0250	1	09/25/25	09/26/25	
Ethylbenzene	ND	0.0250	1	09/25/25	09/26/25	
Toluene	0.0478	0.0250	1	09/25/25	09/26/25	
o-Xylene	0.0431	0.0250	1	09/25/25	09/26/25	
p,m-Xylene	0.124	0.0500	1	09/25/25	09/26/25	
Total Xylenes	0.167	0.0250	1	09/25/25	09/26/25	
<i>Surrogate: 4-Bromochlorobenzene-PID</i>		113 %	70-130	09/25/25	09/26/25	
Nonhalogenated Organics by EPA 8015D - GRO		mg/kg	mg/kg	Analyst: BA		Batch: 2539136
Gasoline Range Organics (C6-C10)	24.6	20.0	1	09/25/25	09/26/25	
<i>Surrogate: 1-Chloro-4-fluorobenzene-FID</i>		89.4 %	70-130	09/25/25	09/26/25	
Nonhalogenated Organics by EPA 8015D - DRO/ORO		mg/kg	mg/kg	Analyst: NV		Batch: 2539141
Diesel Range Organics (C10-C28)	ND	25.0	1	09/25/25	09/26/25	
Oil Range Organics (C28-C36)	ND	50.0	1	09/25/25	09/26/25	
<i>Surrogate: n-Nonane</i>		80.7 %	61-141	09/25/25	09/26/25	



Sample Data

Hilcorp Energy Co
PO Box 61529
Houston TX, 77208

Project Name: San Juan 28-4 #26A
Project Number: 17051-0002
Project Manager: Kate Kaufman

Reported:
9/29/2025 4:46:54PM

SP11

E509286-11

Analyte	Result	Reporting Limit	Dilution	Prepared	Analyzed	Notes
Volatile Organics by EPA 8021B						
	mg/kg	mg/kg	Analyst: BA		Batch: 2539136	
Benzene	ND	0.0250	1	09/25/25	09/26/25	
Ethylbenzene	ND	0.0250	1	09/25/25	09/26/25	
Toluene	ND	0.0250	1	09/25/25	09/26/25	
o-Xylene	0.0335	0.0250	1	09/25/25	09/26/25	
p,m-Xylene	0.0986	0.0500	1	09/25/25	09/26/25	
Total Xylenes	0.132	0.0250	1	09/25/25	09/26/25	
<i>Surrogate: 4-Bromochlorobenzene-PID</i>						
		115 %	70-130	09/25/25	09/26/25	
Nonhalogenated Organics by EPA 8015D - GRO						
	mg/kg	mg/kg	Analyst: BA		Batch: 2539136	
Gasoline Range Organics (C6-C10)	ND	20.0	1	09/25/25	09/26/25	
<i>Surrogate: 1-Chloro-4-fluorobenzene-FID</i>						
		88.7 %	70-130	09/25/25	09/26/25	
Nonhalogenated Organics by EPA 8015D - DRO/ORO						
	mg/kg	mg/kg	Analyst: NV		Batch: 2539141	
Diesel Range Organics (C10-C28)	ND	25.0	1	09/25/25	09/26/25	
Oil Range Organics (C28-C36)	ND	50.0	1	09/25/25	09/26/25	
<i>Surrogate: n-Nonane</i>						
		83.4 %	61-141	09/25/25	09/26/25	



Sample Data

Hilcorp Energy Co
PO Box 61529
Houston TX, 77208

Project Name: San Juan 28-4 #26A
Project Number: 17051-0002
Project Manager: Kate Kaufman

Reported:
9/29/2025 4:46:54PM

SP12

E509286-12

Analyte	Result	Reporting Limit	Dilution	Prepared	Analyzed	Notes
Volatile Organics by EPA 8021B		mg/kg	mg/kg	Analyst: BA		Batch: 2539136
Benzene	ND	0.0250	1	09/25/25	09/26/25	
Ethylbenzene	ND	0.0250	1	09/25/25	09/26/25	
Toluene	ND	0.0250	1	09/25/25	09/26/25	
o-Xylene	0.0310	0.0250	1	09/25/25	09/26/25	
p,m-Xylene	0.0730	0.0500	1	09/25/25	09/26/25	
Total Xylenes	0.104	0.0250	1	09/25/25	09/26/25	
<i>Surrogate: 4-Bromochlorobenzene-PID</i>		114 %	70-130	09/25/25	09/26/25	
Nonhalogenated Organics by EPA 8015D - GRO		mg/kg	mg/kg	Analyst: BA		Batch: 2539136
Gasoline Range Organics (C6-C10)	ND	20.0	1	09/25/25	09/26/25	
<i>Surrogate: 1-Chloro-4-fluorobenzene-FID</i>		88.5 %	70-130	09/25/25	09/26/25	
Nonhalogenated Organics by EPA 8015D - DRO/ORO		mg/kg	mg/kg	Analyst: NV		Batch: 2539141
Diesel Range Organics (C10-C28)	ND	25.0	1	09/25/25	09/26/25	
Oil Range Organics (C28-C36)	ND	50.0	1	09/25/25	09/26/25	
<i>Surrogate: n-Nonane</i>		86.9 %	61-141	09/25/25	09/26/25	



QC Summary Data

Hilcorp Energy Co	Project Name:	San Juan 28-4 #26A	Reported:
PO Box 61529	Project Number:	17051-0002	
Houston TX, 77208	Project Manager:	Kate Kaufman	9/29/2025 4:46:54PM

Volatile Organics by EPA 8021B

Analyst: BA

Analyte	Result mg/kg	Reporting Limit mg/kg	Spike Level mg/kg	Source Result mg/kg	Rec %	Rec Limits %	RPD %	RPD Limit %	Notes
---------	-----------------	-----------------------------	-------------------------	---------------------------	----------	--------------------	----------	-------------------	-------

Blank (2539136-BLK1)

Prepared: 09/25/25 Analyzed: 09/25/25

Benzene	ND	0.0250							
Ethylbenzene	ND	0.0250							
Toluene	ND	0.0250							
o-Xylene	ND	0.0250							
p,m-Xylene	ND	0.0500							
Total Xylenes	ND	0.0250							
Surrogate: 4-Bromochlorobenzene-PID	7.40		8.00		92.4	70-130			

LCS (2539136-BS1)

Prepared: 09/25/25 Analyzed: 09/26/25

Benzene	4.25	0.0250	5.00		85.1	70-130			
Ethylbenzene	4.12	0.0250	5.00		82.4	70-130			
Toluene	4.20	0.0250	5.00		84.0	70-130			
o-Xylene	4.20	0.0250	5.00		84.0	70-130			
p,m-Xylene	8.34	0.0500	10.0		83.4	70-130			
Total Xylenes	12.5	0.0250	15.0		83.6	70-130			
Surrogate: 4-Bromochlorobenzene-PID	7.74		8.00		96.7	70-130			

Matrix Spike (2539136-MS1)

Source: E509283-05

Prepared: 09/25/25 Analyzed: 09/26/25

Benzene	4.45	0.0250	5.00	ND	89.1	70-130			
Ethylbenzene	4.31	0.0250	5.00	ND	86.1	70-130			
Toluene	4.39	0.0250	5.00	ND	87.8	70-130			
o-Xylene	4.38	0.0250	5.00	ND	87.7	70-130			
p,m-Xylene	8.71	0.0500	10.0	ND	87.1	70-130			
Total Xylenes	13.1	0.0250	15.0	ND	87.3	70-130			
Surrogate: 4-Bromochlorobenzene-PID	7.87		8.00		98.4	70-130			

Matrix Spike Dup (2539136-MSD1)

Source: E509283-05

Prepared: 09/25/25 Analyzed: 09/26/25

Benzene	4.05	0.0250	5.00	ND	81.0	70-130	9.43	27	
Ethylbenzene	3.91	0.0250	5.00	ND	78.2	70-130	9.64	26	
Toluene	3.99	0.0250	5.00	ND	79.7	70-130	9.61	20	
o-Xylene	4.00	0.0250	5.00	ND	79.9	70-130	9.23	25	
p,m-Xylene	7.92	0.0500	10.0	ND	79.2	70-130	9.56	23	
Total Xylenes	11.9	0.0250	15.0	ND	79.4	70-130	9.45	26	
Surrogate: 4-Bromochlorobenzene-PID	7.54		8.00		94.2	70-130			



QC Summary Data

Hilcorp Energy Co	Project Name:	San Juan 28-4 #26A	Reported:
PO Box 61529	Project Number:	17051-0002	
Houston TX, 77208	Project Manager:	Kate Kaufman	9/29/2025 4:46:54PM

Nonhalogenated Organics by EPA 8015D - GRO

Analyst: BA

Analyte	Result mg/kg	Reporting Limit mg/kg	Spike Level mg/kg	Source Result mg/kg	Rec %	Rec Limits %	RPD %	RPD Limit %	Notes
---------	-----------------	-----------------------------	-------------------------	---------------------------	----------	--------------------	----------	-------------------	-------

Blank (2539136-BLK1) Prepared: 09/25/25 Analyzed: 09/25/25

Gasoline Range Organics (C6-C10)	ND	20.0							
Surrogate: 1-Chloro-4-fluorobenzene-FID	6.94		8.00		86.7	70-130			

LCS (2539136-BS2) Prepared: 09/25/25 Analyzed: 09/29/25

Gasoline Range Organics (C6-C10)	49.5	20.0	50.0		99.0	70-130			
Surrogate: 1-Chloro-4-fluorobenzene-FID	7.31		8.00		91.3	70-130			

Matrix Spike (2539136-MS2) Source: E509283-05 Prepared: 09/25/25 Analyzed: 09/26/25

Gasoline Range Organics (C6-C10)	40.6	20.0	50.0	ND	81.1	70-130			
Surrogate: 1-Chloro-4-fluorobenzene-FID	6.93		8.00		86.6	70-130			

Matrix Spike Dup (2539136-MSD2) Source: E509283-05 Prepared: 09/25/25 Analyzed: 09/26/25

Gasoline Range Organics (C6-C10)	42.8	20.0	50.0	ND	85.7	70-130	5.43	20	
Surrogate: 1-Chloro-4-fluorobenzene-FID	6.90		8.00		86.2	70-130			



QC Summary Data

Hilcorp Energy Co	Project Name:	San Juan 28-4 #26A	Reported:
PO Box 61529	Project Number:	17051-0002	
Houston TX, 77208	Project Manager:	Kate Kaufman	9/29/2025 4:46:54PM

Nonhalogenated Organics by EPA 8015D - DRO/ORO

Analyst: HM

Analyte	Result mg/kg	Reporting Limit mg/kg	Spike Level mg/kg	Source Result mg/kg	Rec %	Rec Limits %	RPD %	RPD Limit %	Notes
---------	-----------------	-----------------------------	-------------------------	---------------------------	----------	--------------------	----------	-------------------	-------

Blank (2539141-BLK1)					Prepared: 09/25/25 Analyzed: 09/25/25				
Diesel Range Organics (C10-C28)	ND	25.0							
Oil Range Organics (C28-C36)	ND	50.0							
Surrogate: n-Nonane	44.4		50.0		88.8	61-141			

LCS (2539141-BS1)					Prepared: 09/25/25 Analyzed: 09/25/25				
Diesel Range Organics (C10-C28)	256	25.0	250		103	66-144			
Surrogate: n-Nonane	44.4		50.0		88.7	61-141			

Matrix Spike (2539141-MS1)					Source: E509286-05		Prepared: 09/25/25 Analyzed: 09/25/25		
Diesel Range Organics (C10-C28)	257	25.0	250	ND	103	56-156			
Surrogate: n-Nonane	34.3		50.0		68.6	61-141			

Matrix Spike Dup (2539141-MSD1)					Source: E509286-05		Prepared: 09/25/25 Analyzed: 09/25/25		
Diesel Range Organics (C10-C28)	250	25.0	250	ND	100	56-156	2.67	20	
Surrogate: n-Nonane	32.8		50.0		65.6	61-141			

QC Summary Report Comment:
Calculations are based off of the raw (non-rounded) data. However, for reporting purposes all QC data is rounded to three significant figures.
Therefore, hand calculated values may differ slightly.



Definitions and Notes

Hilcorp Energy Co	Project Name:	San Juan 28-4 #26A	
PO Box 61529	Project Number:	17051-0002	Reported:
Houston TX, 77208	Project Manager:	Kate Kaufman	09/29/25 16:46

- ND Analyte NOT DETECTED at or above the reporting limit
- NR Not Reported
- RPD Relative Percent Difference
- DNI Did Not Ignite
- DNR Did not react with the addition of acid or base.

Note (1): Methods marked with ** are non-accredited methods.

Note (2): Soil data is reported on an "as received" weight basis, unless reported otherwise.



Chain of Custody

Page 1 of 2

Same Day

Client Information				Invoice Information				Lab Use Only				TAT				State				
Client: <u>Hilcorp</u>				Company: _____				Lab WO# <u>E509286</u>				Job Number <u>13051-0002</u>				<input checked="" type="checkbox"/> 1D <input type="checkbox"/> 2D <input type="checkbox"/> 3D <input type="checkbox"/> Std				
Project Name: <u>Sandow 284 #26A</u>				Address: _____												<input checked="" type="checkbox"/> NM <input type="checkbox"/> CO <input type="checkbox"/> UT <input type="checkbox"/> TX				
Project Manager: <u>Kate Kaufman</u>				City, State, Zip: _____																
Address: _____				Phone: _____																
City, State, Zip: _____				Email: <u>kkaufman@hilcorp.com</u>																
Phone: _____				Miscellaneous: _____																
Email: _____																				
Sample Information												Analysis and Method				EPA Program				
Time Sampled	Date Sampled	Matrix	No. of Containers	Sample ID	Field	Filter	Lab Number	DRO/DRO by 8015	GRO/DRO by 8015	BTEX by 8021	VOC by 8260	Chloride 300.0	TCEQ 1005 - TX	RCRA 8 Metals	B6DOC - NM	B6DOC - TX	SDWA	CWA	RCRA	
955	4-25	Soil	1x4oz	SP01			1	XXX									22.4			
959				SP02			2										23.3			
1001				SP03			3										21.0			
1003				SP04			4										18.9			
1005				SP05			5										21.7			
1007				SP06			6										24.0			
1009				SP07			7										20.9			
1011				SP08			8										23.4			
1015				SP09			9										18.8			
1017				SP10			10										18.9			
Additional Instructions: <u>cc:Zmyers@ensolum.com, wweichert@ensolum.com</u>																				
I, (field sampler), attest to the validity and authenticity of this sample. I am aware that tampering with or intentionally mislabeling the sample location, date or time of collection is considered fraud and may be grounds for legal action.																				
Sampled by: <u>Zach Myers</u>																				
Relinquished by: (Signature) _____				Date <u>4-25-25</u>		Time <u>1230</u>		Received by: (Signature) <u>Keith Man</u>				Date <u>4-25-25</u>		Time <u>1233</u>		Samples requiring thermal preservation must be received on ice the day they are sampled or received packed on ice at a temp above 0 but less than 6°C on subsequent days. Lab Use Only Received on ice: <u>Y</u> <input checked="" type="checkbox"/> N				
Relinquished by: (Signature) _____				Date _____		Time _____		Received by: (Signature) _____				Date _____		Time _____						
Relinquished by: (Signature) _____				Date _____		Time _____		Received by: (Signature) _____				Date _____		Time _____						
Relinquished by: (Signature) _____				Date _____		Time _____		Received by: (Signature) _____				Date _____		Time _____						
Relinquished by: (Signature) _____				Date _____		Time _____		Received by: (Signature) _____				Date _____		Time _____						
Sample Matrix: S - Soil, Sd - Solid, Sg - Sludge, A - Aqueous, O - Other _____																				
Container Type: g - glass, p - poly/plastic, ag - amber glass, v - VOA _____																				
Note: Samples are discarded 14 days after results are reported unless other arrangements are made. Hazardous samples will be returned to client or disposed of at the client expense. The report for the analysis of the above samples is applicable only to those samples received by the laboratory with this COC. The liability of the laboratory is limited to the amount paid for on the report.																				



Chain of Custody

[illegible]

Envirotech Analytical Laboratory

Printed: 9/25/2025 12:47:45PM

Sample Receipt Checklist (SRC)

Instructions: Please take note of any NO checkmarks.

If we receive no response concerning these items within 24 hours of the date of this notice, all the samples will be analyzed as requested.

Client:	Hilcorp Energy Co	Date Received:	09/25/25 12:33	Work Order ID:	E509286
Phone:	-	Date Logged In:	09/25/25 12:36	Logged In By:	Caitlin Mars
Email:		Due Date:	09/25/25 17:00 (0 day TAT)		

Chain of Custody (COC)

1. Does the sample ID match the COC? Yes
2. Does the number of samples per sampling site location match the COC? Yes
3. Were samples dropped off by client or carrier? Yes
4. Was the COC complete, i.e., signatures, dates/times, requested analyses? Yes
5. Were all samples received within holding time? Yes

Note: Analysis, such as pH which should be conducted in the field, i.e., 15 minute hold time, are not included in this discussion.

Carrier: Zach MyasComments/Resolution

Samples not received on ice. Sample temperatures all above 6 degrees celsius.

Sample Turn Around Time (TAT)

6. Did the COC indicate standard TAT, or Expedited TAT? Yes

Sample Cooler

7. Was a sample cooler received? No
8. If yes, was cooler received in good condition? NA
9. Was the sample(s) received intact, i.e., not broken? Yes
10. Were custody/security seals present? No
11. If yes, were custody/security seals intact? NA
12. Was the sample received on ice? No

Note: Thermal preservation is not required, if samples are received within 15 minutes of sampling

13. See COC for individual sample temps. Samples outside of 0°C-6°C will be recorded in comments.

Sample Container

14. Are aqueous VOC samples present? No
15. Are VOC samples collected in VOA Vials? NA
16. Is the head space less than 6-8 mm (pea sized or less)? NA
17. Was a trip blank (TB) included for VOC analyses? NA
18. Are non-VOC samples collected in the correct containers? Yes
19. Is the appropriate volume/weight or number of sample containers collected? Yes

Field Label

20. Were field sample labels filled out with the minimum information:
 - Sample ID? Yes
 - Date/Time Collected? Yes
 - Collectors name? Yes

Sample Preservation

21. Does the COC or field labels indicate the samples were preserved? No
22. Are sample(s) correctly preserved? NA
24. Is lab filtration required and/or requested for dissolved metals? No

Multiphase Sample Matrix

26. Does the sample have more than one phase, i.e., multiphase? No
27. If yes, does the COC specify which phase(s) is to be analyzed? NA

Subcontract Laboratory

28. Are samples required to get sent to a subcontract laboratory? No
29. Was a subcontract laboratory specified by the client and if so who? NA Subcontract Lab: NA

Client Instruction

Signature of client authorizing changes to the COC or sample disposition.

Date



envirotech Inc.

Report to:
Kate Kaufman



envirotech

Practical Solutions for a Better Tomorrow

Analytical Report

Hilcorp Energy Co

Project Name: San Juan 28-4 #26A

Work Order: E510109

Job Number: 17051-0002

Received: 10/9/2025

Revision: 1

Report Reviewed By:

Walter Hinchman
Laboratory Director
10/16/25

5796 U.S. Hwy 64
Farmington, NM 87401

Phone: (505) 632-1881
Envirotech-inc.com



Envirotech Inc. certifies the test results meet all requirements of TNI unless noted otherwise.
Statement of Data Authenticity: Envirotech Inc. attests the data reported has not been altered in any way.
Partial or incomplete reproduction of this report is prohibited, unless approved by Envirotech Inc.
Envirotech Inc. holds the Utah TNI certification NM00979 for data reported.
Envirotech Inc. holds the Texas TNI certification T104704557 for data reported.

Date Reported: 10/16/25

Kate Kaufman
PO Box 61529
Houston, TX 77208



Project Name: San Juan 28-4 #26A
Workorder: E510109
Date Received: 10/9/2025 3:41:00PM

Kate Kaufman,

Thank you for choosing Envirotech, Inc. as your analytical testing laboratory for the sample(s) received on, 10/9/2025 3:41:00PM, under the Project Name: San Juan 28-4 #26A.

The analytical test results summarized in this report with the Project Name: San Juan 28-4 #26A apply to the individual samples collected, identified and submitted bearing the project name on the enclosed chain-of-custody. Subcontracted sample analyses not conducted by Envirotech, Inc., are attached in full as issued by the subcontract laboratory.

Please review the Chain-of-Custody (COC) and Sample Receipt Checklist (SRC) for any issues regarding sample receipt temperature, containers, preservation etc. To best understand your test results, review the entire report summarizing your sample data and the associated quality control batch data.

All reported data in this analytical report were analyzed according to the referenced method(s) and are in compliance with the latest NELAC/TNI standards, unless otherwise noted. Samples or analytical quality control parameters not meeting specific QC criteria are qualified with a data flag. Data flag definitions are located in the Notes and Definitions section of this analytical report.

If you have any questions concerning this report, please feel free to contact Envirotech, Inc.

Respectfully,

Walter Hinchman
Laboratory Director
Office: 505-632-1881
Cell: 775-287-1762
whinchman@envirotech-inc.com

Raina Schwanz
Laboratory Administrator
Office: 505-632-1881
rainaschwanz@envirotech-inc.com

Field Offices:

Southern New Mexico Area

Lynn Jarboe
Laboratory Technical Representative
Office: 505-421-LABS(5227)
Cell: 505-320-4759
ljjarboe@envirotech-inc.com

Michelle Gonzales
Client Representative
Office: 505-421-LABS(5227)
Cell: 505-947-8222
mgonzales@envirotech-inc.com

Envirotech Web Address: www.envirotech-inc.com

Table of Contents

Title Page	1
Cover Page	2
Table of Contents	3
Sample Summary	4
Sample Data	5
VZ01	5
VZ02	6
VZ03	7
VZ04	8
VZ05	9
VZ06	10
VZ07	11
VZ08	12
QC Summary Data	13
QC - Volatile Organics by EPA 8021B	13
QC - Nonhalogenated Organics by EPA 8015D - GRO	14
QC - Nonhalogenated Organics by EPA 8015D - DRO/ORO	15
Definitions and Notes	16
Chain of Custody etc.	17

Sample Summary

Hilcorp Energy Co	Project Name:	San Juan 28-4 #26A	Reported:
PO Box 61529	Project Number:	17051-0002	
Houston TX, 77208	Project Manager:	Kate Kaufman	10/16/25 09:20

Client Sample ID	Lab Sample ID	Matrix	Sampled	Received	Container
VZ01	E510109-01A	Soil	10/09/25	10/09/25	Glass Jar, 4 oz.
VZ02	E510109-02A	Soil	10/09/25	10/09/25	Glass Jar, 4 oz.
VZ03	E510109-03A	Soil	10/09/25	10/09/25	Glass Jar, 4 oz.
VZ04	E510109-04A	Soil	10/09/25	10/09/25	Glass Jar, 4 oz.
VZ05	E510109-05A	Soil	10/09/25	10/09/25	Glass Jar, 4 oz.
VZ06	E510109-06A	Soil	10/09/25	10/09/25	Glass Jar, 4 oz.
VZ07	E510109-07A	Soil	10/09/25	10/09/25	Glass Jar, 4 oz.
VZ08	E510109-08A	Soil	10/09/25	10/09/25	Glass Jar, 4 oz.



Sample Data

Hilcorp Energy Co
PO Box 61529
Houston TX, 77208

Project Name: San Juan 28-4 #26A
Project Number: 17051-0002
Project Manager: Kate Kaufman

Reported:
10/16/2025 9:20:15AM

VZ01

E510109-01

Analyte	Result	Reporting Limit	Dilution	Prepared	Analyzed	Notes
Volatile Organics by EPA 8021B	mg/kg	mg/kg	Analyst: SL		Batch: 2542012	
Benzene	ND	0.0250	1	10/13/25	10/13/25	
Ethylbenzene	ND	0.0250	1	10/13/25	10/13/25	
Toluene	ND	0.0250	1	10/13/25	10/13/25	
o-Xylene	ND	0.0250	1	10/13/25	10/13/25	
p,m-Xylene	ND	0.0500	1	10/13/25	10/13/25	
Total Xylenes	ND	0.0250	1	10/13/25	10/13/25	
<i>Surrogate: 4-Bromochlorobenzene-PID</i>		113 %	70-130	10/13/25	10/13/25	
Nonhalogenated Organics by EPA 8015D - GRO	mg/kg	mg/kg	Analyst: SL		Batch: 2542012	
Gasoline Range Organics (C6-C10)	ND	20.0	1	10/13/25	10/13/25	
<i>Surrogate: 1-Chloro-4-fluorobenzene-FID</i>		98.4 %	70-130	10/13/25	10/13/25	
Nonhalogenated Organics by EPA 8015D - DRO/ORO	mg/kg	mg/kg	Analyst: HM		Batch: 2542001	
Diesel Range Organics (C10-C28)	ND	25.0	1	10/13/25	10/13/25	
Oil Range Organics (C28-C36)	ND	50.0	1	10/13/25	10/13/25	
<i>Surrogate: n-Nonane</i>		104 %	61-141	10/13/25	10/13/25	



Sample Data

Hilcorp Energy Co
PO Box 61529
Houston TX, 77208

Project Name: San Juan 28-4 #26A
Project Number: 17051-0002
Project Manager: Kate Kaufman

Reported:
10/16/2025 9:20:15AM

VZ02

E510109-02

Analyte	Result	Reporting Limit	Dilution	Prepared	Analyzed	Notes
Volatile Organics by EPA 8021B		mg/kg	mg/kg	Analyst: SL		Batch: 2542012
Benzene	ND	0.0250	1	10/13/25	10/13/25	
Ethylbenzene	ND	0.0250	1	10/13/25	10/13/25	
Toluene	ND	0.0250	1	10/13/25	10/13/25	
o-Xylene	ND	0.0250	1	10/13/25	10/13/25	
p,m-Xylene	ND	0.0500	1	10/13/25	10/13/25	
Total Xylenes	ND	0.0250	1	10/13/25	10/13/25	
<i>Surrogate: 4-Bromochlorobenzene-PID</i>		113 %	70-130	10/13/25	10/13/25	
Nonhalogenated Organics by EPA 8015D - GRO		mg/kg	mg/kg	Analyst: SL		Batch: 2542012
Gasoline Range Organics (C6-C10)	ND	20.0	1	10/13/25	10/13/25	
<i>Surrogate: 1-Chloro-4-fluorobenzene-FID</i>		96.9 %	70-130	10/13/25	10/13/25	
Nonhalogenated Organics by EPA 8015D - DRO/ORO		mg/kg	mg/kg	Analyst: HM		Batch: 2542001
Diesel Range Organics (C10-C28)	ND	25.0	1	10/13/25	10/13/25	
Oil Range Organics (C28-C36)	ND	50.0	1	10/13/25	10/13/25	
<i>Surrogate: n-Nonane</i>		104 %	61-141	10/13/25	10/13/25	



Sample Data

Hilcorp Energy Co
PO Box 61529
Houston TX, 77208

Project Name: San Juan 28-4 #26A
Project Number: 17051-0002
Project Manager: Kate Kaufman

Reported:
10/16/2025 9:20:15AM

VZ03

E510109-03

Analyte	Result	Reporting Limit	Dilution	Prepared	Analyzed	Notes
Volatile Organics by EPA 8021B		mg/kg	mg/kg	Analyst: SL		Batch: 2542012
Benzene	ND	0.0250	1	10/13/25	10/13/25	
Ethylbenzene	ND	0.0250	1	10/13/25	10/13/25	
Toluene	ND	0.0250	1	10/13/25	10/13/25	
o-Xylene	ND	0.0250	1	10/13/25	10/13/25	
p,m-Xylene	ND	0.0500	1	10/13/25	10/13/25	
Total Xylenes	ND	0.0250	1	10/13/25	10/13/25	
<i>Surrogate: 4-Bromochlorobenzene-PID</i>		102 %	70-130	10/13/25	10/13/25	
Nonhalogenated Organics by EPA 8015D - GRO		mg/kg	mg/kg	Analyst: SL		Batch: 2542012
Gasoline Range Organics (C6-C10)	ND	20.0	1	10/13/25	10/13/25	
<i>Surrogate: 1-Chloro-4-fluorobenzene-FID</i>		90.2 %	70-130	10/13/25	10/13/25	
Nonhalogenated Organics by EPA 8015D - DRO/ORO		mg/kg	mg/kg	Analyst: HM		Batch: 2542001
Diesel Range Organics (C10-C28)	ND	25.0	1	10/13/25	10/13/25	
Oil Range Organics (C28-C36)	ND	50.0	1	10/13/25	10/13/25	
<i>Surrogate: n-Nonane</i>		97.6 %	61-141	10/13/25	10/13/25	



Sample Data

Hilcorp Energy Co
PO Box 61529
Houston TX, 77208

Project Name: San Juan 28-4 #26A
Project Number: 17051-0002
Project Manager: Kate Kaufman

Reported:
10/16/2025 9:20:15AM

VZ04

E510109-04

Analyte	Result	Reporting Limit	Dilution	Prepared	Analyzed	Notes
Volatile Organics by EPA 8021B						
	mg/kg	mg/kg	Analyst: SL		Batch: 2542012	
Benzene	ND	0.0250	1	10/13/25	10/13/25	
Ethylbenzene	ND	0.0250	1	10/13/25	10/13/25	
Toluene	ND	0.0250	1	10/13/25	10/13/25	
o-Xylene	ND	0.0250	1	10/13/25	10/13/25	
p,m-Xylene	ND	0.0500	1	10/13/25	10/13/25	
Total Xylenes	ND	0.0250	1	10/13/25	10/13/25	
<i>Surrogate: 4-Bromochlorobenzene-PID</i>						
		111 %	70-130	10/13/25	10/13/25	
Nonhalogenated Organics by EPA 8015D - GRO						
	mg/kg	mg/kg	Analyst: SL		Batch: 2542012	
Gasoline Range Organics (C6-C10)	ND	20.0	1	10/13/25	10/13/25	
<i>Surrogate: 1-Chloro-4-fluorobenzene-FID</i>						
		96.0 %	70-130	10/13/25	10/13/25	
Nonhalogenated Organics by EPA 8015D - DRO/ORO						
	mg/kg	mg/kg	Analyst: HM		Batch: 2542001	
Diesel Range Organics (C10-C28)	ND	25.0	1	10/13/25	10/13/25	
Oil Range Organics (C28-C36)	ND	50.0	1	10/13/25	10/13/25	
<i>Surrogate: n-Nonane</i>						
		93.9 %	61-141	10/13/25	10/13/25	



Sample Data

Hilcorp Energy Co
PO Box 61529
Houston TX, 77208

Project Name: San Juan 28-4 #26A
Project Number: 17051-0002
Project Manager: Kate Kaufman

Reported:
10/16/2025 9:20:15AM

VZ05

E510109-05

Analyte	Result	Reporting Limit	Dilution	Prepared	Analyzed	Notes
Volatile Organics by EPA 8021B		mg/kg	mg/kg	Analyst: SL		Batch: 2542012
Benzene	ND	0.0250	1	10/13/25	10/14/25	
Ethylbenzene	ND	0.0250	1	10/13/25	10/14/25	
Toluene	ND	0.0250	1	10/13/25	10/14/25	
o-Xylene	ND	0.0250	1	10/13/25	10/14/25	
p,m-Xylene	ND	0.0500	1	10/13/25	10/14/25	
Total Xylenes	ND	0.0250	1	10/13/25	10/14/25	
<i>Surrogate: 4-Bromochlorobenzene-PID</i>		110 %	70-130	10/13/25	10/14/25	
Nonhalogenated Organics by EPA 8015D - GRO		mg/kg	mg/kg	Analyst: SL		Batch: 2542012
Gasoline Range Organics (C6-C10)	ND	20.0	1	10/13/25	10/14/25	
<i>Surrogate: 1-Chloro-4-fluorobenzene-FID</i>		97.4 %	70-130	10/13/25	10/14/25	
Nonhalogenated Organics by EPA 8015D - DRO/ORO		mg/kg	mg/kg	Analyst: HM		Batch: 2542001
Diesel Range Organics (C10-C28)	ND	25.0	1	10/13/25	10/13/25	
Oil Range Organics (C28-C36)	ND	50.0	1	10/13/25	10/13/25	
<i>Surrogate: n-Nonane</i>		95.5 %	61-141	10/13/25	10/13/25	



Sample Data

Hilcorp Energy Co
PO Box 61529
Houston TX, 77208

Project Name: San Juan 28-4 #26A
Project Number: 17051-0002
Project Manager: Kate Kaufman

Reported:
10/16/2025 9:20:15AM

VZ06

E510109-06

Analyte	Result	Reporting Limit	Dilution	Prepared	Analyzed	Notes
Volatile Organics by EPA 8021B		mg/kg	mg/kg	Analyst: SL		Batch: 2542012
Benzene	ND	0.0250	1	10/13/25	10/14/25	
Ethylbenzene	ND	0.0250	1	10/13/25	10/14/25	
Toluene	ND	0.0250	1	10/13/25	10/14/25	
o-Xylene	ND	0.0250	1	10/13/25	10/14/25	
p,m-Xylene	ND	0.0500	1	10/13/25	10/14/25	
Total Xylenes	ND	0.0250	1	10/13/25	10/14/25	
<i>Surrogate: 4-Bromochlorobenzene-PID</i>		112 %	70-130	10/13/25	10/14/25	
Nonhalogenated Organics by EPA 8015D - GRO		mg/kg	mg/kg	Analyst: SL		Batch: 2542012
Gasoline Range Organics (C6-C10)	ND	20.0	1	10/13/25	10/14/25	
<i>Surrogate: 1-Chloro-4-fluorobenzene-FID</i>		97.6 %	70-130	10/13/25	10/14/25	
Nonhalogenated Organics by EPA 8015D - DRO/ORO		mg/kg	mg/kg	Analyst: HM		Batch: 2542001
Diesel Range Organics (C10-C28)	ND	25.0	1	10/13/25	10/13/25	
Oil Range Organics (C28-C36)	ND	50.0	1	10/13/25	10/13/25	
<i>Surrogate: n-Nonane</i>		96.8 %	61-141	10/13/25	10/13/25	



Sample Data

Hilcorp Energy Co
PO Box 61529
Houston TX, 77208

Project Name: San Juan 28-4 #26A
Project Number: 17051-0002
Project Manager: Kate Kaufman

Reported:
10/16/2025 9:20:15AM

VZ07

E510109-07

Analyte	Result	Reporting Limit	Dilution	Prepared	Analyzed	Notes
Volatile Organics by EPA 8021B		mg/kg	mg/kg	Analyst: SL	Batch: 2542012	
Benzene	ND	0.0250	1	10/13/25	10/14/25	
Ethylbenzene	ND	0.0250	1	10/13/25	10/14/25	
Toluene	ND	0.0250	1	10/13/25	10/14/25	
o-Xylene	ND	0.0250	1	10/13/25	10/14/25	
p,m-Xylene	ND	0.0500	1	10/13/25	10/14/25	
Total Xylenes	ND	0.0250	1	10/13/25	10/14/25	
<i>Surrogate: 4-Bromochlorobenzene-PID</i>		111 %	70-130	10/13/25	10/14/25	
Nonhalogenated Organics by EPA 8015D - GRO		mg/kg	mg/kg	Analyst: SL	Batch: 2542012	
Gasoline Range Organics (C6-C10)	ND	20.0	1	10/13/25	10/14/25	
<i>Surrogate: 1-Chloro-4-fluorobenzene-FID</i>		97.5 %	70-130	10/13/25	10/14/25	
Nonhalogenated Organics by EPA 8015D - DRO/ORO		mg/kg	mg/kg	Analyst: HM	Batch: 2542001	
Diesel Range Organics (C10-C28)	ND	25.0	1	10/13/25	10/13/25	
Oil Range Organics (C28-C36)	ND	50.0	1	10/13/25	10/13/25	
<i>Surrogate: n-Nonane</i>		97.6 %	61-141	10/13/25	10/13/25	



Sample Data

Hilcorp Energy Co
PO Box 61529
Houston TX, 77208

Project Name: San Juan 28-4 #26A
Project Number: 17051-0002
Project Manager: Kate Kaufman

Reported:
10/16/2025 9:20:15AM

VZ08

E510109-08

Analyte	Result	Reporting Limit	Dilution	Prepared	Analyzed	Notes
Volatile Organics by EPA 8021B		mg/kg	mg/kg	Analyst: SL		Batch: 2542012
Benzene	ND	0.0250	1	10/13/25	10/14/25	
Ethylbenzene	ND	0.0250	1	10/13/25	10/14/25	
Toluene	ND	0.0250	1	10/13/25	10/14/25	
o-Xylene	ND	0.0250	1	10/13/25	10/14/25	
p,m-Xylene	ND	0.0500	1	10/13/25	10/14/25	
Total Xylenes	ND	0.0250	1	10/13/25	10/14/25	
<i>Surrogate: 4-Bromochlorobenzene-PID</i>		113 %	70-130	10/13/25	10/14/25	
Nonhalogenated Organics by EPA 8015D - GRO		mg/kg	mg/kg	Analyst: SL		Batch: 2542012
Gasoline Range Organics (C6-C10)	ND	20.0	1	10/13/25	10/14/25	
<i>Surrogate: 1-Chloro-4-fluorobenzene-FID</i>		97.2 %	70-130	10/13/25	10/14/25	
Nonhalogenated Organics by EPA 8015D - DRO/ORO		mg/kg	mg/kg	Analyst: HM		Batch: 2542001
Diesel Range Organics (C10-C28)	ND	25.0	1	10/13/25	10/13/25	
Oil Range Organics (C28-C36)	98.4	50.0	1	10/13/25	10/13/25	
<i>Surrogate: n-Nonane</i>		96.5 %	61-141	10/13/25	10/13/25	



QC Summary Data

Hilcorp Energy Co	Project Name:	San Juan 28-4 #26A	Reported:
PO Box 61529	Project Number:	17051-0002	
Houston TX, 77208	Project Manager:	Kate Kaufman	10/16/2025 9:20:15AM

Volatile Organics by EPA 8021B

Analyst: SL

Analyte	Result mg/kg	Reporting Limit mg/kg	Spike Level mg/kg	Source Result mg/kg	Rec %	Rec Limits %	RPD %	RPD Limit %	Notes
---------	-----------------	-----------------------------	-------------------------	---------------------------	----------	--------------------	----------	-------------------	-------

Blank (2542012-BLK1)

Prepared: 10/13/25 Analyzed: 10/13/25

Benzene	ND	0.0250							
Ethylbenzene	ND	0.0250							
Toluene	ND	0.0250							
o-Xylene	ND	0.0250							
p,m-Xylene	ND	0.0500							
Total Xylenes	ND	0.0250							
Surrogate: 4-Bromochlorobenzene-PID	8.26		8.00		103	70-130			

LCS (2542012-BS1)

Prepared: 10/13/25 Analyzed: 10/13/25

Benzene	5.11	0.0250	5.00		102	70-130			
Ethylbenzene	5.08	0.0250	5.00		102	70-130			
Toluene	5.09	0.0250	5.00		102	70-130			
o-Xylene	5.06	0.0250	5.00		101	70-130			
p,m-Xylene	10.3	0.0500	10.0		103	70-130			
Total Xylenes	15.3	0.0250	15.0		102	70-130			
Surrogate: 4-Bromochlorobenzene-PID	8.19		8.00		102	70-130			

Matrix Spike (2542012-MS1)

Source: E510109-03

Prepared: 10/13/25 Analyzed: 10/13/25

Benzene	5.05	0.0250	5.00	ND	101	70-130			
Ethylbenzene	5.01	0.0250	5.00	ND	100	70-130			
Toluene	5.02	0.0250	5.00	ND	100	70-130			
o-Xylene	5.00	0.0250	5.00	ND	99.9	70-130			
p,m-Xylene	10.1	0.0500	10.0	ND	101	70-130			
Total Xylenes	15.1	0.0250	15.0	ND	101	70-130			
Surrogate: 4-Bromochlorobenzene-PID	8.23		8.00		103	70-130			

Matrix Spike Dup (2542012-MSD1)

Source: E510109-03

Prepared: 10/13/25 Analyzed: 10/13/25

Benzene	5.05	0.0250	5.00	ND	101	70-130	0.0634	27	
Ethylbenzene	5.02	0.0250	5.00	ND	100	70-130	0.0818	26	
Toluene	5.03	0.0250	5.00	ND	101	70-130	0.145	20	
o-Xylene	5.00	0.0250	5.00	ND	100	70-130	0.120	25	
p,m-Xylene	10.1	0.0500	10.0	ND	101	70-130	0.0838	23	
Total Xylenes	15.2	0.0250	15.0	ND	101	70-130	0.0958	26	
Surrogate: 4-Bromochlorobenzene-PID	8.11		8.00		101	70-130			



QC Summary Data

Hilcorp Energy Co	Project Name:	San Juan 28-4 #26A	Reported:
PO Box 61529	Project Number:	17051-0002	
Houston TX, 77208	Project Manager:	Kate Kaufman	10/16/2025 9:20:15AM

Nonhalogenated Organics by EPA 8015D - GRO

Analyst: SL

Analyte	Result mg/kg	Reporting Limit mg/kg	Spike Level mg/kg	Source Result mg/kg	Rec %	Rec Limits %	RPD %	RPD Limit %	Notes
---------	-----------------	-----------------------------	-------------------------	---------------------------	----------	--------------------	----------	-------------------	-------

Blank (2542012-BLK1)					Prepared: 10/13/25 Analyzed: 10/13/25				
Gasoline Range Organics (C6-C10)	ND	20.0							
Surrogate: 1-Chloro-4-fluorobenzene-FID	7.26		8.00		90.8	70-130			

LCS (2542012-BS2)					Prepared: 10/13/25 Analyzed: 10/13/25				
Gasoline Range Organics (C6-C10)	52.0	20.0	50.0		104	70-130			
Surrogate: 1-Chloro-4-fluorobenzene-FID	7.34		8.00		91.7	70-130			

Matrix Spike (2542012-MS2)					Source: E510109-03		Prepared: 10/13/25 Analyzed: 10/13/25		
Gasoline Range Organics (C6-C10)	54.4	20.0	50.0	ND	109	70-130			
Surrogate: 1-Chloro-4-fluorobenzene-FID	7.41		8.00		92.7	70-130			

Matrix Spike Dup (2542012-MSD2)					Source: E510109-03		Prepared: 10/13/25 Analyzed: 10/13/25		
Gasoline Range Organics (C6-C10)	59.9	20.0	50.0	ND	120	70-130	9.69	20	
Surrogate: 1-Chloro-4-fluorobenzene-FID	7.46		8.00		93.2	70-130			



QC Summary Data

Hilcorp Energy Co	Project Name:	San Juan 28-4 #26A	Reported:
PO Box 61529	Project Number:	17051-0002	
Houston TX, 77208	Project Manager:	Kate Kaufman	10/16/2025 9:20:15AM

Nonhalogenated Organics by EPA 8015D - DRO/ORO

Analyst: HM

Analyte	Result mg/kg	Reporting Limit mg/kg	Spike Level mg/kg	Source Result mg/kg	Rec %	Rec Limits %	RPD %	RPD Limit %	Notes
---------	-----------------	-----------------------------	-------------------------	---------------------------	----------	--------------------	----------	-------------------	-------

Blank (2542001-BLK1)

Prepared: 10/13/25 Analyzed: 10/13/25

Diesel Range Organics (C10-C28)	ND	25.0							
Oil Range Organics (C28-C36)	ND	50.0							
Surrogate: <i>n</i> -Nonane	46.2		50.0		92.3	61-141			

LCS (2542001-BS1)

Prepared: 10/13/25 Analyzed: 10/13/25

Diesel Range Organics (C10-C28)	242	25.0	250		96.7	66-144			
Surrogate: <i>n</i> -Nonane	47.0		50.0		94.0	61-141			

Matrix Spike (2542001-MS1)

Source: E510109-01

Prepared: 10/13/25 Analyzed: 10/13/25

Diesel Range Organics (C10-C28)	252	25.0	250	ND	101	56-156			
Surrogate: <i>n</i> -Nonane	47.2		50.0		94.4	61-141			

Matrix Spike Dup (2542001-MSD1)

Source: E510109-01

Prepared: 10/13/25 Analyzed: 10/13/25

Diesel Range Organics (C10-C28)	255	25.0	250	ND	102	56-156	1.29	20	
Surrogate: <i>n</i> -Nonane	48.3		50.0		96.5	61-141			

QC Summary Report Comment:

Calculations are based off of the raw (non-rounded) data. However, for reporting purposes all QC data is rounded to three significant figures. Therefore, hand calculated values may differ slightly.



Definitions and Notes

Hilcorp Energy Co	Project Name:	San Juan 28-4 #26A	
PO Box 61529	Project Number:	17051-0002	Reported:
Houston TX, 77208	Project Manager:	Kate Kaufman	10/16/25 09:20

- ND Analyte NOT DETECTED at or above the reporting limit
- NR Not Reported
- RPD Relative Percent Difference
- DNI Did Not Ignite
- DNR Did not react with the addition of acid or base.

Note (1): Methods marked with ** are non-accredited methods.

Note (2): Soil data is reported on an "as received" weight basis, unless reported otherwise.

Chain of Custody

Page 1 of 1

Client Information				Invoice Information				Lab Use Only				TAT				State							
Client: <u>Hilcorp</u>				Company: _____				Lab WO# <u>E510109</u>				Job Number <u>17051-0002</u>				1D 2D 3D Std							
Project Name: <u>San Juan 28-4 #26A</u>				Address: _____												NM CO UT TX							
Project Manager: <u>Kate Kaufman</u>				City, State, Zip: _____																			
Address: _____				Phone: _____																			
City, State, Zip: _____				Email: _____																			
Phone: _____				Miscellaneous: _____																			
Email: <u>KKaufman@hilcorp.com</u>																							
Sample Information										Analysis and Method										EPA Program			
Time Sampled	Date Sampled	Matrix	No. of Containers	Sample ID	Field	Filter	Lab Number	DRO/ORO by 8015	GRO/DRO by 8015	BTEX by 8021	VOC by 8260	Chloride 300.0	BGDOC - NM	TCEQ 1005 - TX	RCRA 8 Metals	SDWA	CWA	RCRA					
1323	10/9/25	Soil	1	VZ01			1	X	X	X													
1328				VZ02			2																
1334				VZ03			3																
1338				VZ04			4																
1343				VZ05			5																
1349				VZ06			6																
1353				VZ07			7																
1355				VZ08			8																
Additional Instructions: <u>CC: mpollock@ensdum.com, Shyde@ensolum.com</u>																							
I, (field sampler), attest to the validity and authenticity of this sample. I am aware that tampering with or intentionally mislabeling the sample location, date or time of collection is considered fraud and may be grounds for legal action.																							
Sampled by: <u>[Signature]</u>																							
Relinquished by: (Signature) <u>[Signature]</u>				Date <u>10/9</u>		Time <u>1541</u>		Received by: (Signature) <u>[Signature]</u>				Date <u>10/9/25</u>		Time <u>1541</u>		Samples requiring thermal preservation must be received on ice the day they are sampled or received packed in ice at an avg temp above 0 but less than 5 °C on subsequent days. Lab Use Only Received on Ice: <u>(Y) N</u> T1 _____ T2 _____ T3 _____ AVG Temp °C _____							
Relinquished by: (Signature)				Date		Time		Received by: (Signature)				Date		Time									
Relinquished by: (Signature)				Date		Time		Received by: (Signature)				Date		Time									
Relinquished by: (Signature)				Date		Time		Received by: (Signature)				Date		Time									
Sample Matrix: S - Soil, Sd - Solid, Sg - Sludge, A - Aqueous, O - Other _____																							
Container Type: g - glass, p - poly/plastic, ag - amber glass, v - VOA _____																							
Note: Samples are discarded 14 days after results are reported unless other arrangements are made. Hazardous samples will be returned to client or disposed of at the client expense. The report for the analysis of the above samples is applicable only to those samples received by the laboratory with this COC. The liability of the laboratory is limited to the amount paid for on the report.																							



Envirotech Analytical Laboratory

Printed: 10/10/2025 3:29:56PM

Sample Receipt Checklist (SRC)

Instructions: Please take note of any NO checkmarks.

If we receive no response concerning these items within 24 hours of the date of this notice, all the samples will be analyzed as requested.

Client:	Hilcorp Energy Co	Date Received:	10/09/25 15:41	Work Order ID:	E510109
Phone:	-	Date Logged In:	10/10/25 14:44	Logged In By:	Noe Soto
Email:		Due Date:	10/16/25 17:00 (5 day TAT)		

Chain of Custody (COC)

1. Does the sample ID match the COC? Yes
2. Does the number of samples per sampling site location match the COC? Yes
3. Were samples dropped off by client or carrier? Yes
4. Was the COC complete, i.e., signatures, dates/times, requested analyses? Yes
5. Were all samples received within holding time? Yes

Note: Analysis, such as pH which should be conducted in the field, i.e., 15 minute hold time, are not included in this discussion.

Carrier: M PollockComments/ResolutionSample Turn Around Time (TAT)

6. Did the COC indicate standard TAT, or Expedited TAT? Yes

Sample Cooler

7. Was a sample cooler received? Yes
8. If yes, was cooler received in good condition? Yes
9. Was the sample(s) received intact, i.e., not broken? Yes
10. Were custody/security seals present? No
11. If yes, were custody/security seals intact? NA
12. Was the sample received on ice? Yes

Note: Thermal preservation is not required, if samples are received within 15 minutes of sampling

13. See COC for individual sample temps. Samples outside of 0°C-6°C will be recorded in comments.

Sample Container

14. Are aqueous VOC samples present? No
15. Are VOC samples collected in VOA Vials? NA
16. Is the head space less than 6-8 mm (pea sized or less)? NA
17. Was a trip blank (TB) included for VOC analyses? NA
18. Are non-VOC samples collected in the correct containers? Yes
19. Is the appropriate volume/weight or number of sample containers collected? Yes

Field Label

20. Were field sample labels filled out with the minimum information:
 - Sample ID? Yes
 - Date/Time Collected? Yes
 - Collectors name? Yes

Sample Preservation

21. Does the COC or field labels indicate the samples were preserved? No
22. Are sample(s) correctly preserved? NA
24. Is lab filtration required and/or requested for dissolved metals? No

Multiphase Sample Matrix

26. Does the sample have more than one phase, i.e., multiphase? No
27. If yes, does the COC specify which phase(s) is to be analyzed? NA

Subcontract Laboratory

28. Are samples required to get sent to a subcontract laboratory? No
29. Was a subcontract laboratory specified by the client and if so who? NA Subcontract Lab: NA

Client Instruction

Signature of client authorizing changes to the COC or sample disposition.

Date



envirotech Inc.



APPENDIX C

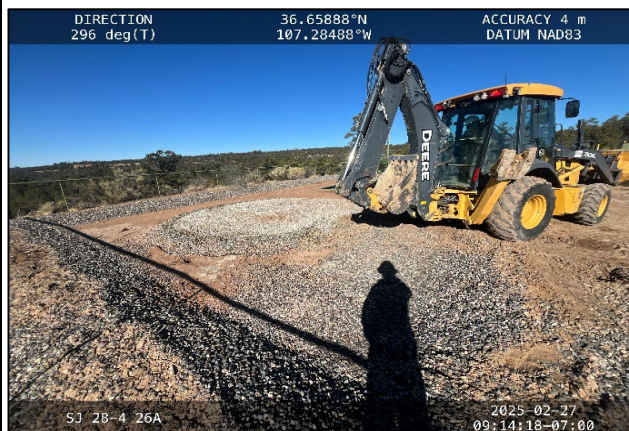
Photographic Log

**Photographic Log**

Hilcorp Energy Company
San Juan 28-4 Unit 26A
Rio Arriba County, New Mexico



Photograph: 1 Date: 1/31/2025
Description: Initial release point and soil staining
View: West



Photograph: 2 Date: 2/27/2025
Description: AST removed prior to potholing
View: Northwest



Photograph: 3 Date: 3/26/2025
Description: Boring BH05@5' split spoon interval
View: North



Photograph: 4 Date: 3/28/2025
Description: BH01 DTW ~54.75' BGS
View: N/A



Photographic Log

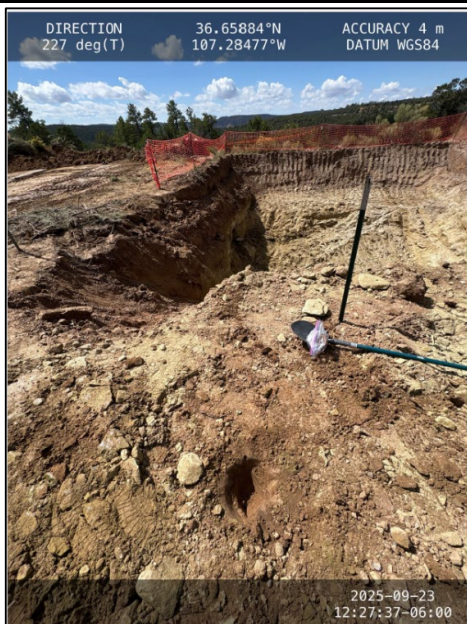
Hilcorp Energy Company
San Juan 28-4 Unit 26A
Rio Arriba County, New Mexico



Photograph: 5 Date: 9/23/2025
Description: Final excavation extent
View: Northwest



Photograph: 6 Date: 2/27/2025
Description: Final excavation extent
View: Northeast



Photograph: 7 Date: 9/23/2025
Description: Collecting surface soil samples
View: Southwest

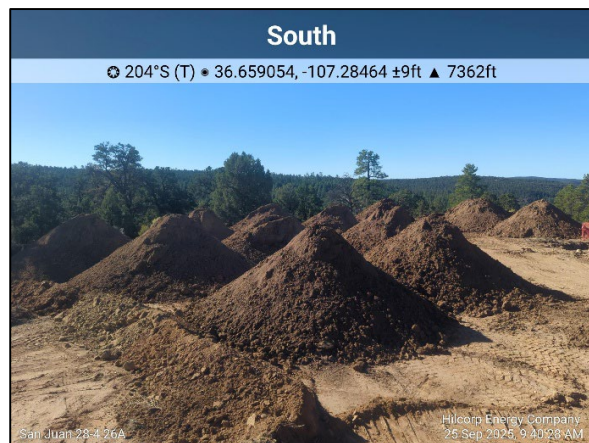


Photograph: 8 Date: 9/24/2025
Description: Soil shredding process
View: Southwest



Photographic Log

Hilcorp Energy Company
San Juan 28-4 Unit 26A
Rio Arriba County, New Mexico



Photograph: 9 Date: 9/25/2025
Description: Treated stockpiles within bermed area
View: South



Photograph: 10 Date: 9/25/2025
Description: Collecting stockpile samples
View: East



Photograph: 11 Date: 10/9/2025
Description: View of stockpile treatment area
View: Northeast



Photograph: 12 Date: 10/9/2025
Description: View of stockpile treatment area
View: West

Sante Fe Main Office
Phone: (505) 476-3441

General Information
Phone: (505) 629-6116

Online Phone Directory
<https://www.emnrd.nm.gov/ocd/contact-us>

State of New Mexico
Energy, Minerals and Natural Resources
Oil Conservation Division
1220 S. St Francis Dr.
Santa Fe, NM 87505

QUESTIONS

Action 526384

QUESTIONS

Operator: HILCORP ENERGY COMPANY 1111 Travis Street Houston, TX 77002	OGRID: 372171
	Action Number: 526384
	Action Type: [C-141] Remediation Closure Request C-141 (C-141-v-Closure)

QUESTIONS

Prerequisites	
Incident ID (n#)	nAPP2502156424
Incident Name	NAPP2502156424 SAN JUAN 28-4 UNIT 26A @ 30-039-27636
Incident Type	Oil Release
Incident Status	Remediation Closure Report Received
Incident Well	[30-039-27636] SAN JUAN 28 4 UNIT #026A

Location of Release Source

Please answer all the questions in this group.

Site Name	SAN JUAN 28-4 UNIT 26A
Date Release Discovered	01/21/2025
Surface Owner	Federal

Incident Details

Please answer all the questions in this group.

Incident Type	Oil Release
Did this release result in a fire or is the result of a fire	No
Did this release result in any injuries	No
Has this release reached or does it have a reasonable probability of reaching a watercourse	No
Has this release endangered or does it have a reasonable probability of endangering public health	No
Has this release substantially damaged or will it substantially damage property or the environment	No
Is this release of a volume that is or may with reasonable probability be detrimental to fresh water	No

Nature and Volume of Release

Material(s) released, please answer all that apply below. Any calculations or specific justifications for the volumes provided should be attached to the follow-up C-141 submission.

Crude Oil Released (bbls) Details	Not answered.
Produced Water Released (bbls) Details	Cause: Corrosion Production Tank Produced Water Released: 18 BBL Recovered: 0 BBL Lost: 18 BBL.
Is the concentration of chloride in the produced water >10,000 mg/l	No
Condensate Released (bbls) Details	Cause: Corrosion Production Tank Condensate Released: 24 BBL Recovered: 0 BBL Lost: 24 BBL.
Natural Gas Vented (Mcf) Details	Not answered.
Natural Gas Flared (Mcf) Details	Not answered.
Other Released Details	Not answered.
Are there additional details for the questions above (i.e. any answer containing Other, Specify, Unknown, and/or Fire, or any negative lost amounts)	41.72-bbl release (23.84-bbl condensate & 17.88-bbl produced water) due to corrosion.

Sante Fe Main Office
Phone: (505) 476-3441

General Information
Phone: (505) 629-6116

Online Phone Directory
<https://www.emnrd.nm.gov/ocd/contact-us>

State of New Mexico
Energy, Minerals and Natural Resources
Oil Conservation Division
1220 S. St Francis Dr.
Santa Fe, NM 87505

QUESTIONS, Page 2

Action 526384

QUESTIONS (continued)

Operator: HILCORP ENERGY COMPANY 1111 Travis Street Houston, TX 77002	OGRID: 372171
	Action Number: 526384
	Action Type: [C-141] Remediation Closure Request C-141 (C-141-v-Closure)

QUESTIONS

Nature and Volume of Release (continued)	
Is this a gas only submission (i.e. only significant Mcf values reported)	No, according to supplied volumes this does not appear to be a "gas only" report.
Was this a major release as defined by Subsection A of 19.15.29.7 NMAC	Yes
Reasons why this would be considered a submission for a notification of a major release	From paragraph A. "Major release" determine using: (1) an unauthorized release of a volume, excluding gases, of 25 barrels or more.
With the implementation of the 19.15.27 NMAC (05/25/2021), venting and/or flaring of natural gas (i.e. gas only) are to be submitted on the C-129 form.	

Initial Response

The responsible party must undertake the following actions immediately unless they could create a safety hazard that would result in injury.

The source of the release has been stopped	True
The impacted area has been secured to protect human health and the environment	True
Released materials have been contained via the use of berms or dikes, absorbent pads, or other containment devices	True
All free liquids and recoverable materials have been removed and managed appropriately	True
If all the actions described above have not been undertaken, explain why	N/A

Per Paragraph (4) of Subsection B of 19.15.29.8 NMAC the responsible party may commence remediation immediately after discovery of a release. If remediation has begun, please prepare and attach a narrative of actions to date in the follow-up C-141 submission. If remedial efforts have been successfully completed or if the release occurred within a lined containment area (see Subparagraph (a) of Paragraph (5) of Subsection A of 19.15.29.11 NMAC), please prepare and attach all information needed for closure evaluation in the follow-up C-141 submission.

I hereby certify that the information given above is true and complete to the best of my knowledge and understand that pursuant to OCD rules and regulations all operators are required to report and/or file certain release notifications and perform corrective actions for releases which may endanger public health or the environment. The acceptance of a C-141 report by the OCD does not relieve the operator of liability should their operations have failed to adequately investigate and remediate contamination that pose a threat to groundwater, surface water, human health or the environment. In addition, OCD acceptance of a C-141 report does not relieve the operator of responsibility for compliance with any other federal, state, or local laws and/or regulations.

I hereby agree and sign off to the above statement	Name: Stuart Hyde Title: Senior Geologist Email: shyde@ensolum.com Date: 11/13/2025
--	--

Sante Fe Main Office
Phone: (505) 476-3441

General Information
Phone: (505) 629-6116

Online Phone Directory
<https://www.emnrd.nm.gov/ocd/contact-us>

State of New Mexico
Energy, Minerals and Natural Resources
Oil Conservation Division
1220 S. St Francis Dr.
Santa Fe, NM 87505

QUESTIONS, Page 3

Action 526384

QUESTIONS (continued)

Operator: HILCORP ENERGY COMPANY 1111 Travis Street Houston, TX 77002	OGRID: 372171
	Action Number: 526384
	Action Type: [C-141] Remediation Closure Request C-141 (C-141-v-Closure)

QUESTIONS

Site Characterization	
<i>Please answer all the questions in this group (only required when seeking remediation plan approval and beyond). This information must be provided to the appropriate district office no later than 90 days after the release discovery date.</i>	
What is the shallowest depth to groundwater beneath the area affected by the release in feet below ground surface (ft bgs)	Between 51 and 75 (ft.)
What method was used to determine the depth to ground water	Direct Measurement
Did this release impact groundwater or surface water	No
What is the minimum distance, between the closest lateral extents of the release and the following surface areas:	
A continuously flowing watercourse or any other significant watercourse	Between 500 and 1000 (ft.)
Any lakebed, sinkhole, or playa lake (measured from the ordinary high-water mark)	Between 1 and 5 (mi.)
An occupied permanent residence, school, hospital, institution, or church	Greater than 5 (mi.)
A spring or a private domestic fresh water well used by less than five households for domestic or stock watering purposes	Between 1 and 5 (mi.)
Any other fresh water well or spring	Between ½ and 1 (mi.)
Incorporated municipal boundaries or a defined municipal fresh water well field	Greater than 5 (mi.)
A wetland	Between 500 and 1000 (ft.)
A subsurface mine	Greater than 5 (mi.)
An (non-karst) unstable area	Greater than 5 (mi.)
Categorize the risk of this well / site being in a karst geology	None
A 100-year floodplain	Between 1 and 5 (mi.)
Did the release impact areas not on an exploration, development, production, or storage site	No

Remediation Plan	
<i>Please answer all the questions that apply or are indicated. This information must be provided to the appropriate district office no later than 90 days after the release discovery date.</i>	
Requesting a remediation plan approval with this submission	Yes
<i>Attach a comprehensive report demonstrating the lateral and vertical extents of soil contamination associated with the release have been determined, pursuant to 19.15.29.11 NMAC and 19.15.29.13 NMAC.</i>	
Have the lateral and vertical extents of contamination been fully delineated	Yes
Was this release entirely contained within a lined containment area	No
Soil Contamination Sampling: (Provide the highest observable value for each, in milligrams per kilograms.)	
Chloride (EPA 300.0 or SM4500 Cl B)	0
TPH (GRO+DRO+MRO) (EPA SW-846 Method 8015M)	10450
GRO+DRO (EPA SW-846 Method 8015M)	10450
BTEX (EPA SW-846 Method 8021B or 8260B)	849
Benzene (EPA SW-846 Method 8021B or 8260B)	29
<i>Per Subsection B of 19.15.29.11 NMAC unless the site characterization report includes completed efforts at remediation, the report must include a proposed remediation plan in accordance with 19.15.29.12 NMAC, which includes the anticipated timelines for beginning and completing the remediation.</i>	
On what estimated date will the remediation commence	09/01/2025
On what date will (or did) the final sampling or liner inspection occur	09/15/2025
On what date will (or was) the remediation complete(d)	09/15/2025
What is the estimated surface area (in square feet) that will be reclaimed	0
What is the estimated volume (in cubic yards) that will be reclaimed	0
What is the estimated surface area (in square feet) that will be remediated	1430
What is the estimated volume (in cubic yards) that will be remediated	635
<i>These estimated dates and measurements are recognized to be the best guess or calculation at the time of submission and may (be) change(d) over time as more remediation efforts are completed.</i>	
<i>The OCD recognizes that proposed remediation measures may have to be minimally adjusted in accordance with the physical realities encountered during remediation. If the responsible party has any need to significantly deviate from the remediation plan proposed, then it should consult with the division to determine if another remediation plan submission is required.</i>	

Sante Fe Main Office
Phone: (505) 476-3441

General Information
Phone: (505) 629-6116

Online Phone Directory
<https://www.emnrd.nm.gov/ocd/contact-us>

State of New Mexico
Energy, Minerals and Natural Resources
Oil Conservation Division
1220 S. St Francis Dr.
Santa Fe, NM 87505

QUESTIONS, Page 4

Action 526384

QUESTIONS (continued)

Operator: HILCORP ENERGY COMPANY 1111 Travis Street Houston, TX 77002	OGRID: 372171
	Action Number: 526384
	Action Type: [C-141] Remediation Closure Request C-141 (C-141-v-Closure)

QUESTIONS

Remediation Plan (continued)	
<i>Please answer all the questions that apply or are indicated. This information must be provided to the appropriate district office no later than 90 days after the release discovery date.</i>	
This remediation will (or is expected to) utilize the following processes to remediate / reduce contaminants:	
<i>(Select all answers below that apply.)</i>	
(Ex Situ) Excavation and off-site disposal (i.e. dig and haul, hydrovac, etc.)	No
(Ex Situ) Excavation and on-site remediation (i.e. On-Site Land Farms)	No
(In Situ) Soil Vapor Extraction	No
(In Situ) Chemical processing (i.e. Soil Shredding, Potassium Permanganate, etc.)	Yes
(In Situ) Biological processing (i.e. Microbes / Fertilizer, etc.)	No
(In Situ) Physical processing (i.e. Soil Washing, Gypsum, Disking, etc.)	No
Ground Water Abatement pursuant to 19.15.30 NMAC	No
OTHER (Non-listed remedial process)	No
<i>Per Subsection B of 19.15.29.11 NMAC unless the site characterization report includes completed efforts at remediation, the report must include a proposed remediation plan in accordance with 19.15.29.12 NMAC, which includes the anticipated timelines for beginning and completing the remediation.</i>	
I hereby certify that the information given above is true and complete to the best of my knowledge and understand that pursuant to OCD rules and regulations all operators are required to report and/or file certain release notifications and perform corrective actions for releases which may endanger public health or the environment. The acceptance of a C-141 report by the OCD does not relieve the operator of liability should their operations have failed to adequately investigate and remediate contamination that pose a threat to groundwater, surface water, human health or the environment. In addition, OCD acceptance of a C-141 report does not relieve the operator of responsibility for compliance with any other federal, state, or local laws and/or regulations.	
I hereby agree and sign off to the above statement	Name: Stuart Hyde Title: Senior Geologist Email: shyde@ensolum.com Date: 11/13/2025
<i>The OCD recognizes that proposed remediation measures may have to be minimally adjusted in accordance with the physical realities encountered during remediation. If the responsible party has any need to significantly deviate from the remediation plan proposed, then it should consult with the division to determine if another remediation plan submission is required.</i>	

Sante Fe Main Office
Phone: (505) 476-3441

General Information
Phone: (505) 629-6116

Online Phone Directory
<https://www.emnrd.nm.gov/ocd/contact-us>

State of New Mexico
Energy, Minerals and Natural Resources
Oil Conservation Division
1220 S. St Francis Dr.
Santa Fe, NM 87505

QUESTIONS, Page 5

Action 526384

QUESTIONS (continued)

Operator: HILCORP ENERGY COMPANY 1111 Travis Street Houston, TX 77002	OGRID: 372171
	Action Number: 526384
	Action Type: [C-141] Remediation Closure Request C-141 (C-141-v-Closure)

QUESTIONS

Deferral Requests Only	
Only answer the questions in this group if seeking a deferral upon approval this submission. Each of the following items must be confirmed as part of any request for deferral of remediation.	
Requesting a deferral of the remediation closure due date with the approval of this submission	No

Sante Fe Main Office
Phone: (505) 476-3441

General Information
Phone: (505) 629-6116

Online Phone Directory
<https://www.emnrd.nm.gov/ocd/contact-us>

State of New Mexico
Energy, Minerals and Natural Resources
Oil Conservation Division
1220 S. St Francis Dr.
Santa Fe, NM 87505

QUESTIONS, Page 6

Action 526384

QUESTIONS (continued)

Operator: HILCORP ENERGY COMPANY 1111 Travis Street Houston, TX 77002	OGRID: 372171
	Action Number: 526384
	Action Type: [C-141] Remediation Closure Request C-141 (C-141-v-Closure)

QUESTIONS

Sampling Event Information	
Last sampling notification (C-141N) recorded	512207
Sampling date pursuant to Subparagraph (a) of Paragraph (1) of Subsection D of 19.15.29.12 NMAC	10/09/2025
What was the (estimated) number of samples that were to be gathered	7
What was the sampling surface area in square feet	10000

Remediation Closure Request

Only answer the questions in this group if seeking remediation closure for this release because all remediation steps have been completed.

Requesting a remediation closure approval with this submission	Yes
Have the lateral and vertical extents of contamination been fully delineated	Yes
Was this release entirely contained within a lined containment area	No
All areas reasonably needed for production or subsequent drilling operations have been stabilized, returned to the sites existing grade, and have a soil cover that prevents ponding of water, minimizing dust and erosion	Yes
What was the total surface area (in square feet) remediated	1200
What was the total volume (cubic yards) remediated	600
All areas not reasonably needed for production or subsequent drilling operations have been reclaimed to contain a minimum of four feet of non-waste contain earthen material with concentrations less than 600 mg/kg chlorides, 100 mg/kg TPH, 50 mg/kg BTEX, and 10 mg/kg Benzene	Yes
What was the total surface area (in square feet) reclaimed	0
What was the total volume (in cubic yards) reclaimed	0
Summarize any additional remediation activities not included by answers (above)	N/A

The responsible party must attach information demonstrating they have complied with all applicable closure requirements and any conditions or directives of the OCD. This demonstration should be in the form of a comprehensive report (in .pdf format) including a scaled site map, sampling diagrams, relevant field notes, photographs of any excavation prior to backfilling, laboratory data including chain of custody documents of final sampling, and a narrative of the remedial activities. Refer to 19.15.29.12 NMAC.

I hereby certify that the information given above is true and complete to the best of my knowledge and understand that pursuant to OCD rules and regulations all operators are required to report and/or file certain release notifications and perform corrective actions for releases which may endanger public health or the environment. The acceptance of a C-141 report by the OCD does not relieve the operator of liability should their operations have failed to adequately investigate and remediate contamination that pose a threat to groundwater, surface water, human health or the environment. In addition, OCD acceptance of a C-141 report does not relieve the operator of responsibility for compliance with any other federal, state, or local laws and/or regulations. The responsible party acknowledges they must substantially restore, reclaim, and re-vegetate the impacted surface area to the conditions that existed prior to the release or their final land use in accordance with 19.15.29.13 NMAC including notification to the OCD when reclamation and re-vegetation are complete.

I hereby agree and sign off to the above statement	Name: Stuart Hyde Title: Senior Geologist Email: shyde@ensolum.com Date: 11/13/2025
--	--

Sante Fe Main Office
Phone: (505) 476-3441

General Information
Phone: (505) 629-6116

Online Phone Directory
<https://www.emnrd.nm.gov/ocd/contact-us>

State of New Mexico
Energy, Minerals and Natural Resources
Oil Conservation Division
1220 S. St Francis Dr.
Santa Fe, NM 87505

QUESTIONS, Page 7

Action 526384

QUESTIONS (continued)

Operator: HILCORP ENERGY COMPANY 1111 Travis Street Houston, TX 77002	OGRID: 372171
	Action Number: 526384
	Action Type: [C-141] Remediation Closure Request C-141 (C-141-v-Closure)

QUESTIONS

Reclamation Report	
Only answer the questions in this group if all reclamation steps have been completed.	
Requesting a reclamation approval with this submission	No

Sante Fe Main Office
Phone: (505) 476-3441

General Information
Phone: (505) 629-6116

Online Phone Directory
<https://www.emnrd.nm.gov/oed/contact-us>

State of New Mexico
Energy, Minerals and Natural Resources
Oil Conservation Division
1220 S. St Francis Dr.
Santa Fe, NM 87505

CONDITIONS

Action 526384

CONDITIONS

Operator: HILCORP ENERGY COMPANY 1111 Travis Street Houston, TX 77002	OGRID: 372171
	Action Number: 526384
	Action Type: [C-141] Remediation Closure Request C-141 (C-141-v-Closure)

CONDITIONS

Created By	Condition	Condition Date
scwells	None	12/3/2025