



SITE INFORMATION

Closure Report
Riverwalk Federal 29C CTB
Incident ID: nAPP2532355881
Eddy County, New Mexico
Unit C Sec 29 T26S R29E
32.019557, -104.008166

Produced Water Release
Point of Release: Corrosion
Release Date: 11/09/2025
Volume Released: 10 Barrels of Produced Water
Volume Recovered: 8 Barrels of Produced Water

CARMONA RESOURCES



Prepared for:
Concho Operating, LLC
600 W Illinois Ave
Midland, Texas 79701

Prepared by:
Carmona Resources, LLC
310 West Wall Street
Suite 500
Midland, Texas 79701

310 West Wall Street, Suite 500
Midland TX, 79701
432.813.1992



TABLE OF CONTENTS

1.0 SITE INFORMATION AND BACKGROUND

2.0 SITE CHARACTERIZATION AND GROUNDWATER

3.0 NMAC REGULATORY CRITERIA

4.0 LINER INSPECTION ACTIVITIES

5.0 CONCLUSIONS

FIGURES

FIGURE 1 OVERVIEW FIGURE 2 TOPOGRAPHIC

FIGURE 3 SECONDARY CONTAINMENT MAP

APPENDICES

APPENDIX A PHOTOS

APPENDIX B SITE CHARACTERIZATION AND GROUNDWATER

December 30, 2025

Mike Bratcher
District Supervisor
Oil Conservation Division, District 2
811 S. First Street
Artesia, New Mexico 88210

**Re: Closure Report
Riverwalk Federal 29C CTB
Concho Operating, LLC
Incident Number: nAPP2532355881
Site Location: Unit C, S29, T26S, R29E
(Lat 32.019557°, Long -104.008166°)
Eddy County, New Mexico**

Mr. Bratcher:

On behalf of Concho Operating LLC (COG), Carmona Resources, LLC has prepared this letter to document site activities for Riverwalk Federal 29C CTB. The site is located at 32.019557°, -104.008166° within Unit C, S29, T26S, R29E, in Eddy County, New Mexico (Figures 1 and 2).

1.0 Site Information and Background

Based on the information obtained from the NMOCD, the release was discovered on November 9, 2025, due to corrosion. It resulted in approximately ten (10) barrels of produced water being released, and eight (8) barrels of produced water being recovered. See Figure 3.

2.0 Site Characterization and Groundwater

The site is located within a medium karst area. Based on a review of the New Mexico Office of State Engineers and USGS databases, no known water source within a 0.50-mile radius of the location. The closest well is located approximately 0.87 miles West of the site at 32.016146, -104.021411 and was drilled in 2022. The well has a reported groundwater depth of greater than 55 feet below ground surface (ft bgs). A copy of the associated point of diversion is attached in Appendix B.

3.0 Site Characterization and Groundwater

Per the NMOCD regulatory criteria established in 19.15.29.12 NMAC, the following criteria were utilized in assessing the site.

- Benzene: 10 milligrams per kilogram (mg/kg).
- Benzene, toluene, ethylbenzene, and total xylenes (BTEX): 50 mg/kg.
- TPH: 100 mg/kg (GRO + DRO + MRO).
- Chloride: 600 mg/kg.



4.0 Liner Inspection Activities

Before conducting the liner inspection, a crew arrived on site to remove all freestanding fluids. After the plastic liner was thoroughly cleaned, Carmona Resources personnel inspected it to assess its structural integrity. On December 17, 2025, Carmona Resources, LLC conducted the liner inspection activities and confirmed that the liner was intact with no integrity issues. Refer to the Photolog for details.

5.0 Conclusions

Based on the liner inspection throughout the facility, no further actions are required at the site. If you have any questions regarding this report or need additional information, don't hesitate to contact us at 432-813-1992.

Sincerely,

Carmona Resources, LLC

Conner Moehring
Environmental Manager

FIGURES

CARMONA RESOURCES

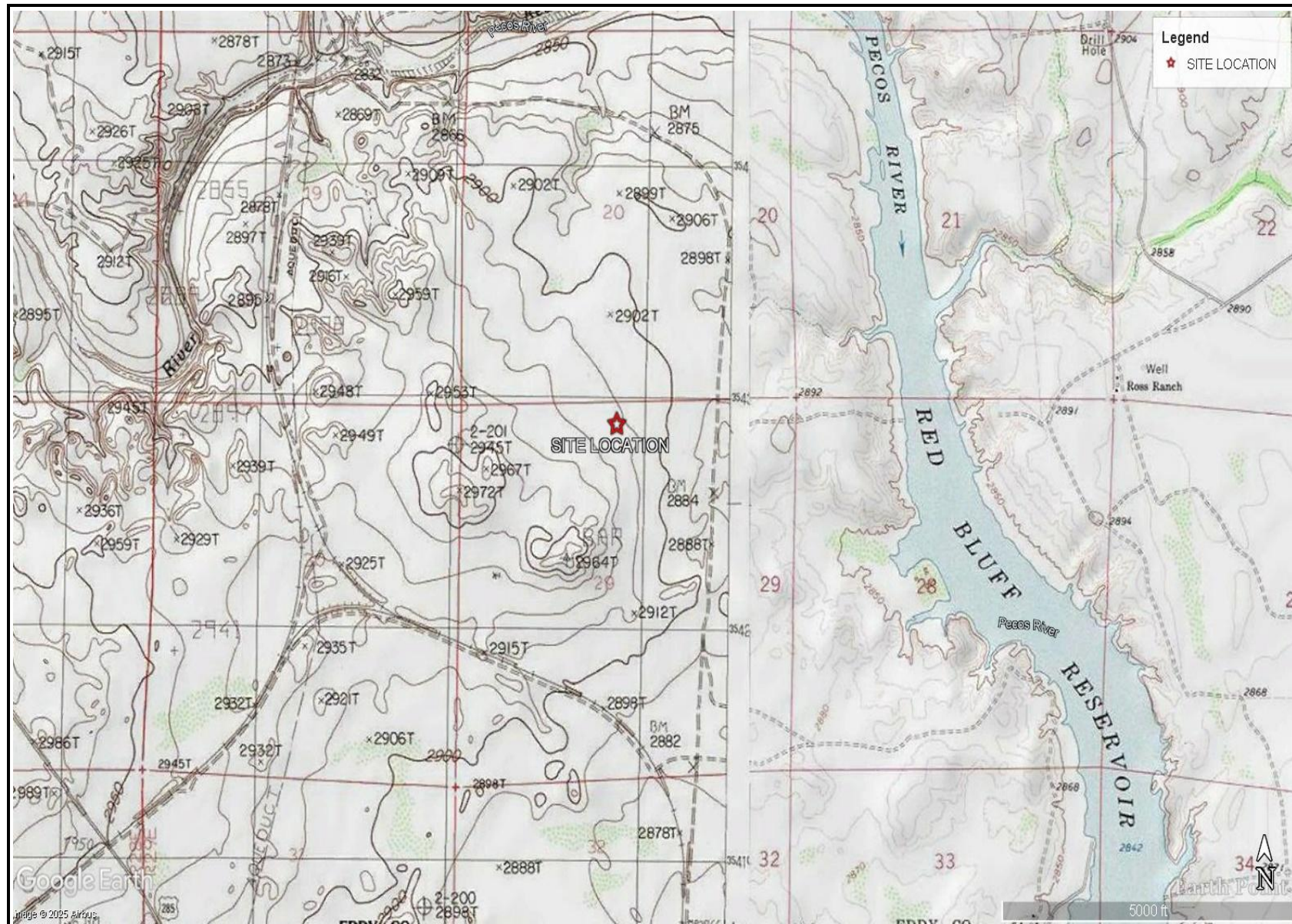




OVERVIEW MAP
 COG OPERATING, LLC
 RIVERWALK FED 29C CTB
 EDDY COUNTY, NEW MEXICO
 32.019557, -104.008166



FIGURE 1

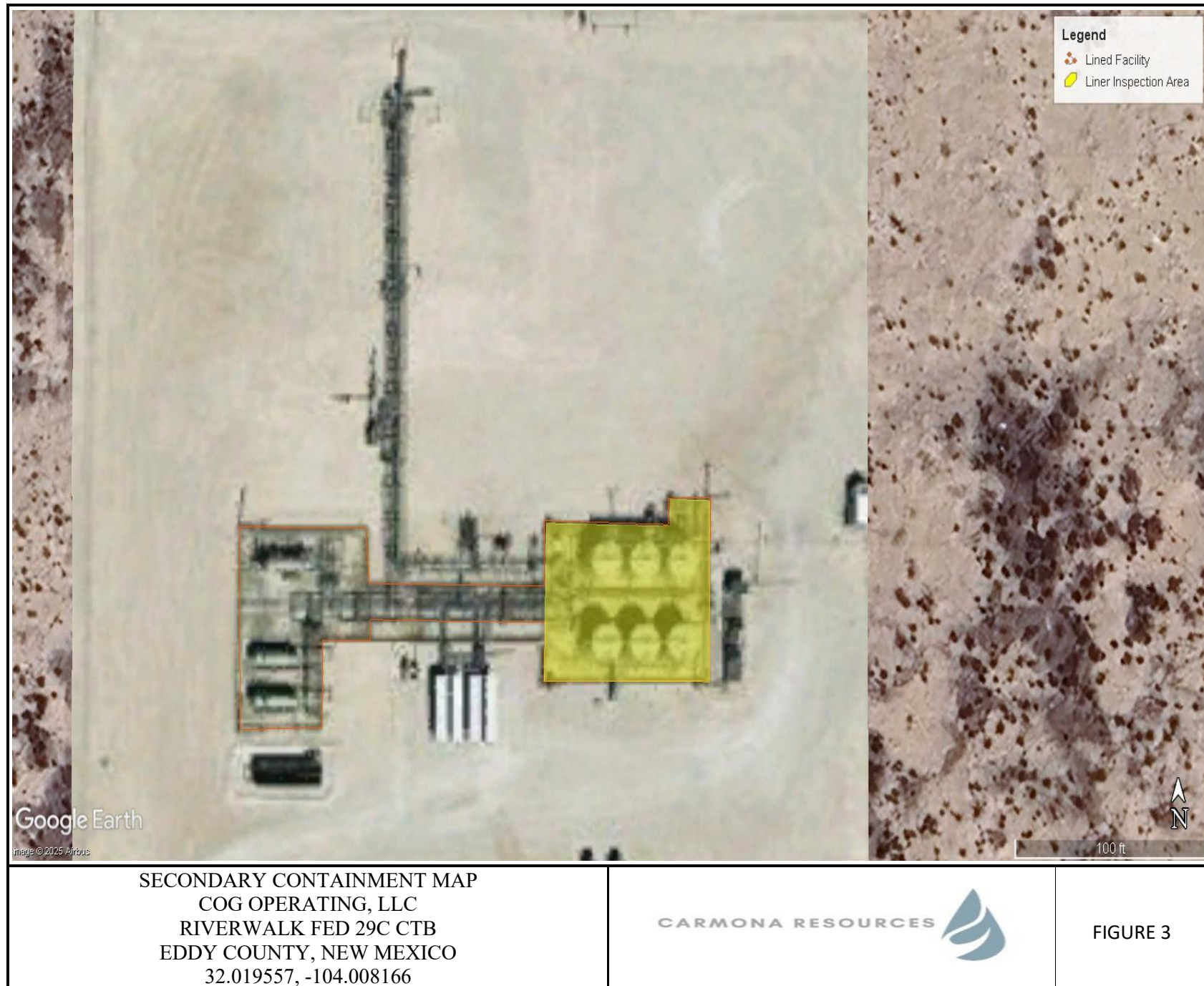


OVERVIEW MAP
 COG OPERATING, LLC
 RIVERWALK FED 29C CTB
 EDDY COUNTY, NEW MEXICO
 32.019557, -104.008166

CARMONA RESOURCES



FIGURE 2



APPENDIX A

CARMONA RESOURCES



PHOTOGRAPHIC LOG

COG Operating, LLC

Photograph No. 1

Facility: Riverwalk FED 29C CTB

County: Eddy County, New Mexico

Description:
Facility Sign

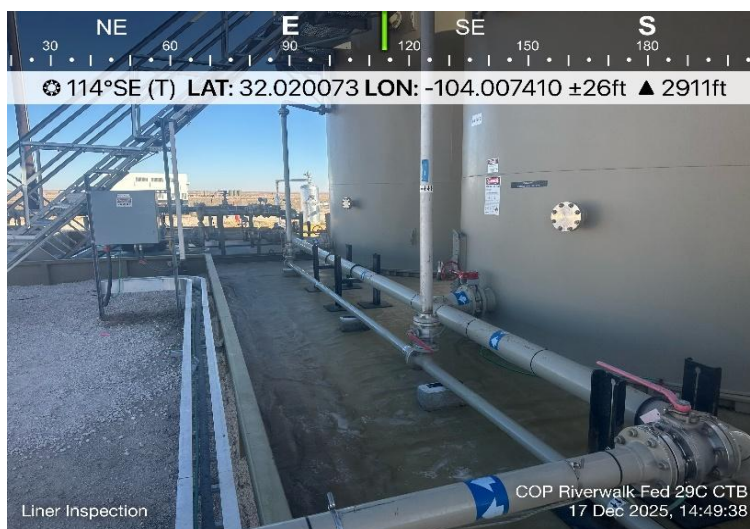


Photograph No. 2

Facility: Riverwalk FED 29C CTB

County: Eddy County, New Mexico

Description:
View East of cleaned Liner.

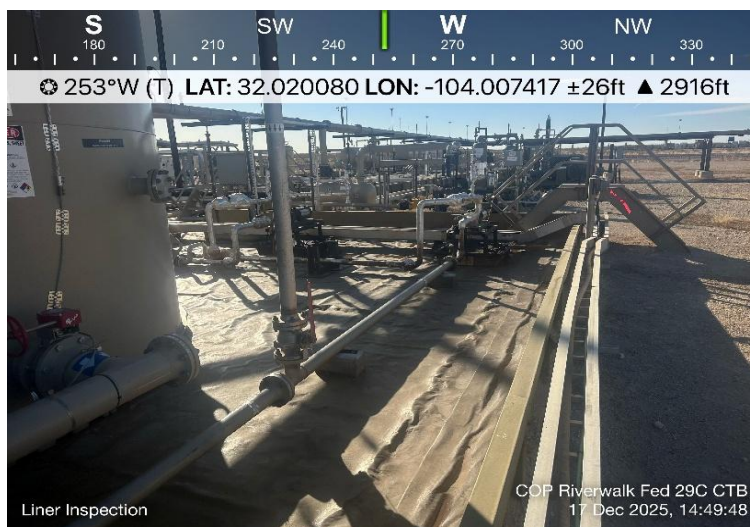


Photograph No. 3

Facility: Riverwalk FED 29C CTB

County: Eddy County, New Mexico

Description:
View West of cleaned Liner.



PHOTOGRAPHIC LOG

COG Operating, LLC

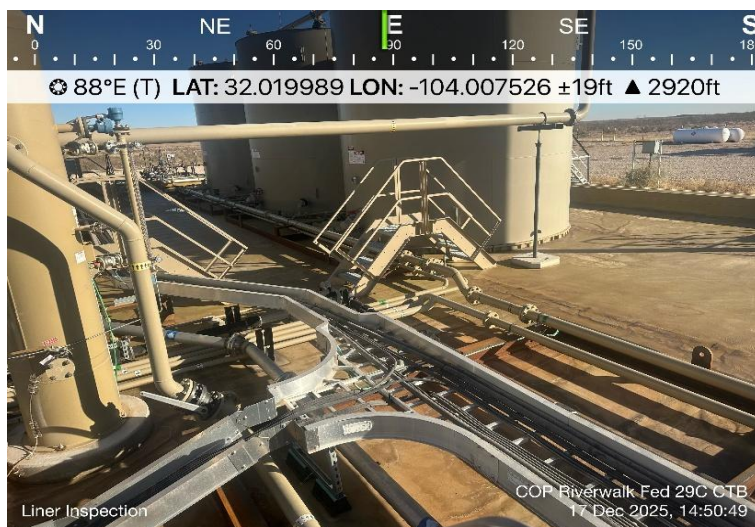
Photograph No. 4

Facility: Riverwalk FED 29C CTB

County: Eddy County, New Mexico

Description:

View East of cleaned Liner.



Photograph No. 5

Facility: Riverwalk FED 29C CTB

County: Eddy County, New Mexico

Description:

View East of cleaned Liner.



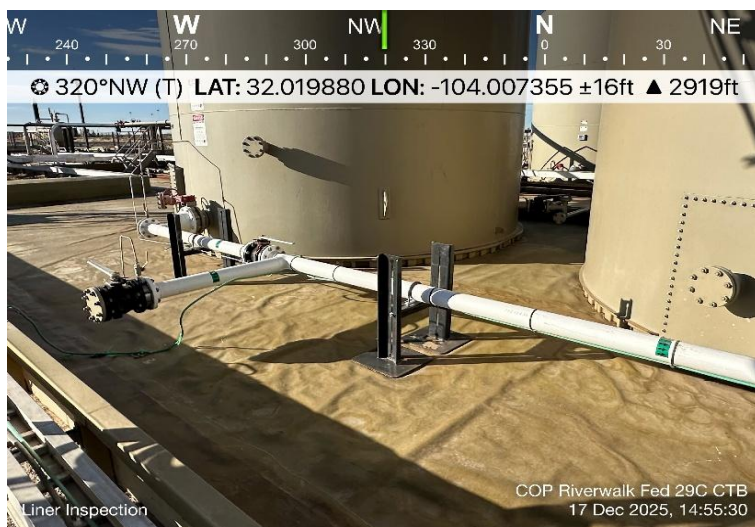
Photograph No. 6

Facility: Riverwalk FED 29C CTB

County: Eddy County, New Mexico

Description:

View Northwest of cleaned Liner.



PHOTOGRAPHIC LOG

COG Operating, LLC

Photograph No. 7

Facility: Riverwalk FED 29C CTB

County: Eddy County, New Mexico

Description:

View Northwest of cleaned Liner.



Photograph No. 8

Facility: Riverwalk FED 29C CTB

County: Eddy County, New Mexico

Description:

View Northeast of cleaned Liner.



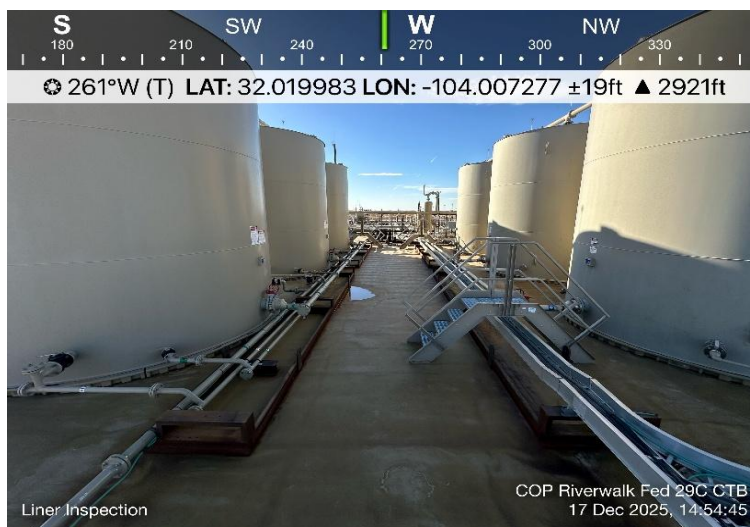
Photograph No. 9

Facility: Riverwalk FED 29C CTB

County: Eddy County, New Mexico

Description:

View West of cleaned Liner.



APPENDIX B

CARMONA RESOURCES



Nearest water well

COG OPERATING LLC

Legend

- 0.50 Mile Radius
- 0.87 Miles
- 1.88 Miles
- Groundwater Determination Bore
- RIVERWALK FED 29C CTB (11.09.2025)



55' GWDB - Drilled 04.25.2022

55' GWDB - Drilled 04.25.2022

RIVERWALK FED 29C CTB (11.09.2025)

Medium Karst

COG OPERATING LLC

Legend

-  High
-  Medium
-  RIVERWALK FED 29C CTB (11.09.2025)

RIVERWALK FED 29C CTB (11.09.2025)





New Mexico Office of the State Engineer

Water Column/Average Depth to Water

(A CLW#### in the POD suffix indicates the POD has been replaced & no longer serves a water right file.) (R=POD has been replaced, O=orphaned, C=the file is closed) (quarters are smallest to largest)

POD Number	Code	Sub basin	County	Q64	Q16	Q4	Sec	Tws	Range	X	Y	Map	Distance (meters)	Well Depth (In feet)	Depth Water (In feet)	Water Column
C 04630 POD1		CUB	ED	SW	SE	SW	22	26S	29E	596792.0	3543275.4		3049			
C 03605 POD1		CUB	ED	SE	NE	SW	27	26S	29E	596989.7	3541983.3		3419	45	0	45
C 04850 POD1		CUB	ED	SE	SW	NE	27	26S	29E	597437.2	3542880.3		3692	76	65	11
C 04850 POD3		CUB	ED	SW	NE	NE	27	26S	29E	597509.4	3542795.1		3770	98		
C 04850 POD5		CUB	ED	SW	SE	NE	27	26S	29E	597548.8	3542708.6		3817	64	57	7
C 04850 POD2		CUB	ED	SW	NE	NE	27	26S	29E	597623.2	3542827.0		3881	70	64	6
C 04850 POD6		CUB	ED	SW	SE	NE	27	26S	29E	597629.1	3542646.9		3903	76	64	12
C 04850 POD7		CUB	ED	SW	SE	NE	27	26S	29E	597621.8	3542536.6		3909	64	57	7
C 04850 POD4		CUB	ED	NE	SW	NE	27	26S	29E	597706.6	3542727.1		3972	64	55	9

Average Depth to Water: 51 feet

Minimum Depth: 0 feet

Maximum Depth: 65 feet

Record Count: 9

UTM Filters (in meters):

Easting: 593749.48
Northing: 3543076.54
Radius: 4000

* UTM location was derived from PLSS - see Help

The data is furnished by the NMOSE/ISC and is accepted by the recipient with the expressed understanding that the OSE/ISC make no warranties, expressed or implied, concerning the accuracy, completeness, reliability, usability, or suitability for any particular purpose of the data.



Project Name :	COG - Copperhead Fee A 3H (02.08.22)	Date :	Monday, April 25, 2022
Project No. :	1023	Sampler :	Lane Scarborough
Location :	Eddy County, New Mexico	Driller :	Scarborough Drilling
Coordinates :	32.016146, -104.021411	Method :	Air Rotary
Elevation :	2,935'		

Depth (ft.)	WL	Soil Description	Lithology	Depth (ft.)	WL	Soil Description	Lithology
0		(0') - Light Brown soft clayey sand, with 20% medium loose sub angular sand, dry, some organics (SC)		50		(50') - light-dark brown stiff soft clayey sand with 3% fine loose soft, sub angular sand, dry, no organics (ML)	
5		(5') - Light Brown soft clayey sand, with 20% medium loose sub angular sand, dry, some organics (SC)		55		(55') - light-dark brown stiff soft clayey sand with 3% fine loose soft, sub angular sand, dry, no organics (ML)	
10		(10') - Light brown, stiff soft clayey sand, with 3% fine loose sub angular sand, dry, no organics (SC)		60			
15		(15') - Light brown, stiff soft clayey sand, with 3% fine loose sub angular sand, dry, no organics (SC)		65			
20		(20') - Light brown, stiff soft clayey sand, with 3% fine loose sub angular sand, dry, no organics (SC)		70			
25		(25') - Light brown, stiff soft clayey sand, with 3% fine loose sub angular sand, dry, no organics (SC)		75			
30		(30') - light-dark brown stiff soft clayey sand with 3% fine loose soft, sub angular sand, dry, no organics (ML)		80			
35		(35') - light-dark brown stiff soft clayey sand with 3% fine loose soft, sub angular sand, dry, no organics (ML)		85			
40		(40') - light-dark brown stiff soft clayey sand with 3% fine loose soft, sub angular sand, dry, no organics (ML)		90			
45		(45') - light-dark brown stiff soft clayey sand with 3% fine loose soft, sub angular sand, dry, no organics (ML)		95			
50				105			

Comments : Boring terminated at 55' at 10:00 AM Central Time with no presence of groundwater or moisture.

Well gauged on 4/29/22 at 11:00 AM Central Time with no detection of groundwater or moisture

CARMONA RESOURCES



Project Name : **COG - Copperhead Fee 31E CTB (01.14.22)**
 Project No. : **1002**
 Location : **Eddy County, New Mexico**
 Coordinates : **32.002359, -104.031693**
 Elevation : **2,930'**

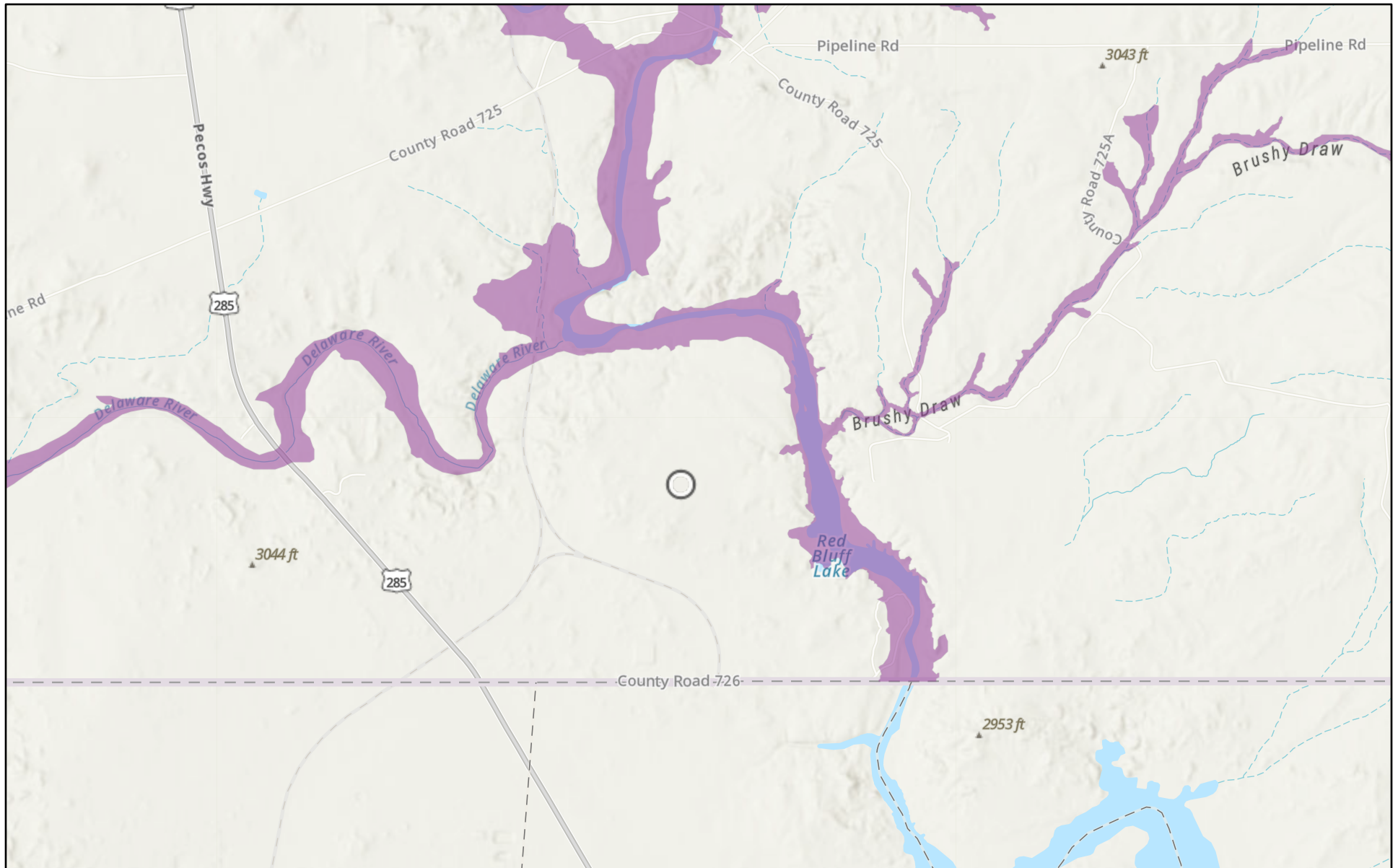
Date : **Monday, May 9, 2022**
 Sampler : **Lane Scarborough**
 Driller : **Scarborough Drilling**
 Method : **Air Rotary**

Depth (ft.)	WL	Soil Description	Lithology	Depth (ft.)	WL	Soil Description	Lithology
0		(0') - Red to Brown sandy clay, with 50% medium well-cemented angular gravel, dry, no organics, no odor (GC)		50		(50') - light-dark brown stiff soft clayey sand with 3% fine loose soft, sub-angular sand, dry, no organics (ML)	
5		(5') - Red to Brown sandy clay, with 50% medium well-cemented angular gravel, dry, no organics, no odor (GC)		55		(55') - light-dark brown stiff soft clayey sand with 3% fine loose soft, sub-angular sand, dry, no organics (ML)	
10		(10') - Red to Brown sandy clay, with 50% medium well-cemented angular gravel, dry, no organics, no odor (GC)		60			
12		(12') - Red to Brown sandy clay, with 50% well-cemented gypsum fragments, dry, no organics, no odor (SC)		65			
15		(15') - Red to Brown sandy clay, with 50% well-cemented gypsum fragments, dry, no organics, no odor (SC)		70			
20		(20') - Red to Brown sandy clay, with 50% well-cemented gypsum fragments, dry, no organics, no odor (SC)		75			
25		(25') - Red to Brown sandy clay, with 50% well-cemented gypsum fragments, dry, no organics, no odor (SC)		80			
30		(30') - light-dark brown stiff soft clayey sand with 3% fine loose soft, sub-angular sand, dry, no organics (ML)		85			
35		(35') - light-dark brown stiff soft clayey sand with 3% fine loose soft, sub-angular sand, dry, no organics (ML)		90			
40		(40') - light-dark brown stiff soft clayey sand with 3% fine loose soft, sub-angular sand, dry, no organics (ML)		95			
45		(45') - light-dark brown stiff soft clayey sand with 3% fine loose soft, sub-angular sand, dry, no organics (ML)		105			
50							

Comments : Boring terminated at 55' at 10:00 AM Central Time with no presence of groundwater or moisture.

Well gauged on 5/13/22 at 11:00 AM Central Time with no detection of groundwater or moisture

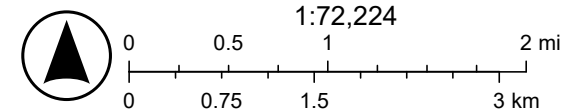
RIVERWALK FED 29C CTB (11.09.2025)



12/15/2025

USA Flood Hazard Areas

World_Hillshade

 1% Annual Chance Flood Hazard

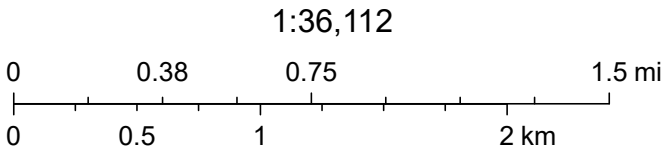
Esri, NASA, NGA, USGS, FEMA, Sources: Esri, TomTom, Garmin, FAO, NOAA, USGS, (c) OpenStreetMap contributors, and the GIS User

RIVERWALK FED 29C CTB (11.09.2025)



12/15/2025, 12:59:44 PM

- OSW Water Bodies
- OSE Streams



Esri, NASA, NGA, USGS, FEMA, Sources: Esri, TomTom, Garmin, FAO, NOAA, USGS, © OpenStreetMap contributors, and the GIS User Community, NM OSE

Sante Fe Main Office
Phone: (505) 476-3441

General Information
Phone: (505) 629-6116

Online Phone Directory
<https://www.emnrd.nm.gov/ocd/contact-us>

State of New Mexico
Energy, Minerals and Natural Resources
Oil Conservation Division
1220 S. St Francis Dr.
Santa Fe, NM 87505

QUESTIONS

Action 538779

QUESTIONS

Operator: COG OPERATING LLC 600 W Illinois Ave Midland, TX 79701	OGRID: 229137
	Action Number: 538779
	Action Type: [C-141] Remediation Closure Request C-141 (C-141-v-Closure)

QUESTIONS

Prerequisites	
Incident ID (n#)	nAPP2532355881
Incident Name	NAPP2532355881 RIVERWALK FEDERAL 29C CTB @ FAPP2419937171
Incident Type	Produced Water Release
Incident Status	Remediation Closure Report Received
Incident Facility	[fAPP2419937171] RIVERWALK FED 29C CTB

Location of Release Source

Please answer all the questions in this group.

Site Name	Riverwalk Federal 29C CTB
Date Release Discovered	11/09/2025
Surface Owner	Federal

Incident Details

Please answer all the questions in this group.

Incident Type	Produced Water Release
Did this release result in a fire or is the result of a fire	No
Did this release result in any injuries	No
Has this release reached or does it have a reasonable probability of reaching a watercourse	No
Has this release endangered or does it have a reasonable probability of endangering public health	No
Has this release substantially damaged or will it substantially damage property or the environment	No
Is this release of a volume that is or may with reasonable probability be detrimental to fresh water	No

Nature and Volume of Release

Material(s) released, please answer all that apply below. Any calculations or specific justifications for the volumes provided should be attached to the follow-up C-141 submission.

Crude Oil Released (bbls) Details	Not answered.
Produced Water Released (bbls) Details	Cause: Corrosion Fitting Produced Water Released: 10 BBL Recovered: 8 BBL Lost: 2 BBL.
Is the concentration of chloride in the produced water >10,000 mg/l	Yes
Condensate Released (bbls) Details	Not answered.
Natural Gas Vented (Mcf) Details	Not answered.
Natural Gas Flared (Mcf) Details	Not answered.
Other Released Details	Not answered.
Are there additional details for the questions above (i.e. any answer containing Other, Specify, Unknown, and/or Fire, or any negative lost amounts)	Not answered.

Sante Fe Main Office
Phone: (505) 476-3441

General Information
Phone: (505) 629-6116

Online Phone Directory
<https://www.emnrd.nm.gov/ocd/contact-us>

State of New Mexico
Energy, Minerals and Natural Resources
Oil Conservation Division
1220 S. St Francis Dr.
Santa Fe, NM 87505

QUESTIONS, Page 2

Action 538779

QUESTIONS (continued)

Operator: COG OPERATING LLC 600 W Illinois Ave Midland, TX 79701	OGRID: 229137
	Action Number: 538779
	Action Type: [C-141] Remediation Closure Request C-141 (C-141-v-Closure)

QUESTIONS

Nature and Volume of Release (continued)	
Is this a gas only submission (i.e. only significant Mcf values reported)	No, according to supplied volumes this does not appear to be a "gas only" report.
Was this a major release as defined by Subsection A of 19.15.29.7 NMAC	No
Reasons why this would be considered a submission for a notification of a major release	Unavailable.
With the implementation of the 19.15.27 NMAC (05/25/2021), venting and/or flaring of natural gas (i.e. gas only) are to be submitted on the C-129 form.	

Initial Response

The responsible party must undertake the following actions immediately unless they could create a safety hazard that would result in injury.

The source of the release has been stopped	True
The impacted area has been secured to protect human health and the environment	True
Released materials have been contained via the use of berms or dikes, absorbent pads, or other containment devices	True
All free liquids and recoverable materials have been removed and managed appropriately	True
If all the actions described above have not been undertaken, explain why	Not answered.

Per Paragraph (4) of Subsection B of 19.15.29.8 NMAC the responsible party may commence remediation immediately after discovery of a release. If remediation has begun, please prepare and attach a narrative of actions to date in the follow-up C-141 submission. If remedial efforts have been successfully completed or if the release occurred within a lined containment area (see Subparagraph (a) of Paragraph (5) of Subsection A of 19.15.29.11 NMAC), please prepare and attach all information needed for closure evaluation in the follow-up C-141 submission.

I hereby certify that the information given above is true and complete to the best of my knowledge and understand that pursuant to OCD rules and regulations all operators are required to report and/or file certain release notifications and perform corrective actions for releases which may endanger public health or the environment. The acceptance of a C-141 report by the OCD does not relieve the operator of liability should their operations have failed to adequately investigate and remediate contamination that pose a threat to groundwater, surface water, human health or the environment. In addition, OCD acceptance of a C-141 report does not relieve the operator of responsibility for compliance with any other federal, state, or local laws and/or regulations.

I hereby agree and sign off to the above statement	Name: Jacqui Harris Title: Sr Environment Engineer Email: jacqui.harris@conocophillips.com Date: 12/30/2025
--	--

Sante Fe Main Office
Phone: (505) 476-3441

General Information
Phone: (505) 629-6116

Online Phone Directory
<https://www.emnrd.nm.gov/ocd/contact-us>

State of New Mexico
Energy, Minerals and Natural Resources
Oil Conservation Division
1220 S. St Francis Dr.
Santa Fe, NM 87505

QUESTIONS, Page 3

Action 538779

QUESTIONS (continued)

Operator: COG OPERATING LLC 600 W Illinois Ave Midland, TX 79701	OGRID:
	229137
	Action Number:
	538779
Action Type:	
[C-141] Remediation Closure Request C-141 (C-141-v-Closure)	

QUESTIONS

Site Characterization	
<i>Please answer all the questions in this group (only required when seeking remediation plan approval and beyond). This information must be provided to the appropriate district office no later than 90 days after the release discovery date.</i>	
What is the shallowest depth to groundwater beneath the area affected by the release in feet below ground surface (ft bgs)	Between 51 and 75 (ft.)
What method was used to determine the depth to ground water	NM OSE iWaters Database Search
Did this release impact groundwater or surface water	No
What is the minimum distance, between the closest lateral extents of the release and the following surface areas:	
A continuously flowing watercourse or any other significant watercourse	Between ½ and 1 (mi.)
Any lakebed, sinkhole, or playa lake (measured from the ordinary high-water mark)	Between ½ and 1 (mi.)
An occupied permanent residence, school, hospital, institution, or church	Greater than 5 (mi.)
A spring or a private domestic fresh water well used by less than five households for domestic or stock watering purposes	Greater than 5 (mi.)
Any other fresh water well or spring	Between 1 and 5 (mi.)
Incorporated municipal boundaries or a defined municipal fresh water well field	Greater than 5 (mi.)
A wetland	Between ½ and 1 (mi.)
A subsurface mine	Greater than 5 (mi.)
An (non-karst) unstable area	Between 1 and 5 (mi.)
Categorize the risk of this well / site being in a karst geology	Medium
A 100-year floodplain	Between ½ and 1 (mi.)
Did the release impact areas not on an exploration, development, production, or storage site	No

Remediation Plan	
<i>Please answer all the questions that apply or are indicated. This information must be provided to the appropriate district office no later than 90 days after the release discovery date.</i>	
Requesting a remediation plan approval with this submission	Yes
<i>Attach a comprehensive report demonstrating the lateral and vertical extents of soil contamination associated with the release have been determined, pursuant to 19.15.29.11 NMAC and 19.15.29.13 NMAC.</i>	
Have the lateral and vertical extents of contamination been fully delineated	Yes
Was this release entirely contained within a lined containment area	Yes
<i>Per Subsection B of 19.15.29.11 NMAC unless the site characterization report includes completed efforts at remediation, the report must include a proposed remediation plan in accordance with 19.15.29.12 NMAC, which includes the anticipated timelines for beginning and completing the remediation.</i>	
On what estimated date will the remediation commence	11/09/2025
On what date will (or did) the final sampling or liner inspection occur	12/17/2025
On what date will (or was) the remediation complete(d)	12/17/2025
What is the estimated surface area (in square feet) that will be remediated	5720
What is the estimated volume (in cubic yards) that will be remediated	0
<i>These estimated dates and measurements are recognized to be the best guess or calculation at the time of submission and may (be) change(d) over time as more remediation efforts are completed.</i>	
<i>The OCD recognizes that proposed remediation measures may have to be minimally adjusted in accordance with the physical realities encountered during remediation. If the responsible party has any need to significantly deviate from the remediation plan proposed, then it should consult with the division to determine if another remediation plan submission is required.</i>	

Sante Fe Main Office
Phone: (505) 476-3441

General Information
Phone: (505) 629-6116

Online Phone Directory
<https://www.emnrd.nm.gov/ocd/contact-us>

State of New Mexico
Energy, Minerals and Natural Resources
Oil Conservation Division
1220 S. St Francis Dr.
Santa Fe, NM 87505

QUESTIONS, Page 4

Action 538779

QUESTIONS (continued)

Operator: COG OPERATING LLC 600 W Illinois Ave Midland, TX 79701	OGRID: 229137
	Action Number: 538779
	Action Type: [C-141] Remediation Closure Request C-141 (C-141-v-Closure)

QUESTIONS

Remediation Plan (continued)	
<i>Please answer all the questions that apply or are indicated. This information must be provided to the appropriate district office no later than 90 days after the release discovery date.</i>	
This remediation will (or is expected to) utilize the following processes to remediate / reduce contaminants:	
<i>(Select all answers below that apply.)</i>	
Is (or was) there affected material present needing to be removed	No
Is (or was) there a power wash of the lined containment area (to be) performed	Yes
OTHER (Non-listed remedial process)	Not answered.
<i>Per Subsection B of 19.15.29.11 NMAC unless the site characterization report includes completed efforts at remediation, the report must include a proposed remediation plan in accordance with 19.15.29.12 NMAC, which includes the anticipated timelines for beginning and completing the remediation.</i>	
I hereby certify that the information given above is true and complete to the best of my knowledge and understand that pursuant to OCD rules and regulations all operators are required to report and/or file certain release notifications and perform corrective actions for releases which may endanger public health or the environment. The acceptance of a C-141 report by the OCD does not relieve the operator of liability should their operations have failed to adequately investigate and remediate contamination that pose a threat to groundwater, surface water, human health or the environment. In addition, OCD acceptance of a C-141 report does not relieve the operator of responsibility for compliance with any other federal, state, or local laws and/or regulations.	
I hereby agree and sign off to the above statement	Name: Jacqui Harris Title: Sr Environment Engineer Email: jacqui.harris@conocophillips.com Date: 12/30/2025
<i>The OCD recognizes that proposed remediation measures may have to be minimally adjusted in accordance with the physical realities encountered during remediation. If the responsible party has any need to significantly deviate from the remediation plan proposed, then it should consult with the division to determine if another remediation plan submission is required.</i>	

Sante Fe Main Office
Phone: (505) 476-3441

General Information
Phone: (505) 629-6116

Online Phone Directory
<https://www.emnrd.nm.gov/ocd/contact-us>

State of New Mexico
Energy, Minerals and Natural Resources
Oil Conservation Division
1220 S. St Francis Dr.
Santa Fe, NM 87505

QUESTIONS, Page 6

Action 538779

QUESTIONS (continued)

Operator: COG OPERATING LLC 600 W Illinois Ave Midland, TX 79701	OGRID: 229137
	Action Number: 538779
	Action Type: [C-141] Remediation Closure Request C-141 (C-141-v-Closure)

QUESTIONS

Liner Inspection Information	
Last liner inspection notification (C-141L) recorded	534539
Liner inspection date pursuant to Subparagraph (a) of Paragraph (5) of Subsection A of 19.15.29.11 NMAC	12/17/2025
Was all the impacted materials removed from the liner	Yes
What was the liner inspection surface area in square feet	20000

Remediation Closure Request	
<i>Only answer the questions in this group if seeking remediation closure for this release because all remediation steps have been completed.</i>	
Requesting a remediation closure approval with this submission	Yes
Have the lateral and vertical extents of contamination been fully delineated	Yes
Was this release entirely contained within a lined containment area	Yes
What was the total surface area (in square feet) remediated	5720
What was the total volume (cubic yards) remediated	0
Summarize any additional remediation activities not included by answers (above)	liner was pressure washed and then the liner inspection occurred
<i>The responsible party must attach information demonstrating they have complied with all applicable closure requirements and any conditions or directives of the OCD. This demonstration should be in the form of a comprehensive report (in .pdf format) including a scaled site map, sampling diagrams, relevant field notes, photographs of any excavation prior to backfilling, laboratory data including chain of custody documents of final sampling, and a narrative of the remedial activities. Refer to 19.15.29.12 NMAC.</i>	
I hereby certify that the information given above is true and complete to the best of my knowledge and understand that pursuant to OCD rules and regulations all operators are required to report and/or file certain release notifications and perform corrective actions for releases which may endanger public health or the environment. The acceptance of a C-141 report by the OCD does not relieve the operator of liability should their operations have failed to adequately investigate and remediate contamination that pose a threat to groundwater, surface water, human health or the environment. In addition, OCD acceptance of a C-141 report does not relieve the operator of responsibility for compliance with any other federal, state, or local laws and/or regulations. The responsible party acknowledges they must substantially restore, reclaim, and re-vegetate the impacted surface area to the conditions that existed prior to the release or their final land use in accordance with 19.15.29.13 NMAC including notification to the OCD when reclamation and re-vegetation are complete.	
I hereby agree and sign off to the above statement	Name: Jacqui Harris Title: Sr Environment Engineer Email: jacqui.harris@conocophillips.com Date: 12/30/2025

Sante Fe Main Office
Phone: (505) 476-3441

General Information
Phone: (505) 629-6116

Online Phone Directory
<https://www.emnrd.nm.gov/ocd/contact-us>

State of New Mexico
Energy, Minerals and Natural Resources
Oil Conservation Division
1220 S. St Francis Dr.
Santa Fe, NM 87505

CONDITIONS

Action 538779

CONDITIONS

Operator: COG OPERATING LLC 600 W Illinois Ave Midland, TX 79701	OGRID: 229137
	Action Number: 538779
	Action Type: [C-141] Remediation Closure Request C-141 (C-141-v-Closure)

CONDITIONS

Created By	Condition	Condition Date
rhamlet	We have received your Remediation Closure Report for Incident #nAPP2532355881 Riverwalk Federal 29C CTB, thank you. This Remediation Closure Report is approved.	1/13/2026