



January 15, 2026

**New Mexico Oil Conservation Division**

New Mexico Energy, Minerals, and Natural Resources Department  
1220 South St. Francis Drive  
Santa Fe, New Mexico 87505

**Re: Remediation Report and Closure Request**

Davis Gas Com F 1R  
San Juan County, New Mexico  
Hilcorp Energy Company  
NMOCD Incident Number: nAPP2514234133

To Whom it May Concern:

Ensolum, LLC (Ensolum), on behalf of Hilcorp Energy Company (Hilcorp), presents this *Remediation Report and Closure Request* for a release at the Davis Gas Com F 1R natural gas production well (Site). The Site is located on private land in Unit I, Section 27, Township 29 North, Range 11 West, San Juan County, New Mexico (Figure 1). This report describes the excavation and confirmation soil sampling activities performed at the Site to remediate impacted soil originating from the release.

## SITE BACKGROUND

On May 21, 2025, Hilcorp personnel discovered a release of 38 barrels (bbls) of condensate and 38 bbls of produced water at the Site. Specifically, while conducting a routine Site inspection, a Hilcorp operator observed a leak on drain valve swedge threads. The operator opened the drain valve to the pit to remove the remaining fluids from the tank. The spilled fluids did not migrate horizontally outside of secondary containment; however, the fluids migrated vertically through the secondary containment liner and were not recovered. Hilcorp submitted the *Notification of Release* to the New Mexico Oil Conservation Division (NMOCD) on May 21, 2025. The NMOCD has assigned the Site Incident Number nAPP2514234133.

## SITE CLOSURE CRITERIA

As part of the initial Site investigation described in the *Remediation Work Plan* dated August 18, 2025, local geology/hydrogeology and nearby sensitive receptors were assessed in accordance with Title 19, Chapter 15, Part 29, Sections 11 and 12 (19.15.29.11 and 12) of the New Mexico Administrative Code (NMAC). In accordance with the *Table I, Closure Criteria for Soils Impacted by a Release* (19.15.29.12 NMAC), the following Closure Criteria for constituents of concern (COCs) should be applied to the Site:

- Benzene: 10 milligrams per kilogram (mg/kg)
- Benzene, toluene, ethylbenzene, and xylenes (BTEX): 50 mg/kg

- Total petroleum hydrocarbons (TPH) as a combination of gasoline range organics (GRO), diesel range organics (DRO), and motor oil range organics (MRO): 100 mg/kg
- Chloride: 600 mg/kg

## SITE INVESTIGATION ACTIVITIES

Upon discovery of the release, Hilcorp retained Ensolum to conduct hand auger delineation activities on May 29, 2025. The secondary containment liner was compromised and allowed fluids to migrate vertically below the liner; however, the liner was removed prior to Ensolum being on-Site and was not thoroughly inspected for holes or tears prior to being removed. In total, six hand auger boreholes (HA01 through HA06) were advanced at the Site to depths up to 5 feet below ground surface (bgs), as shown on Figure 2. Samples were submitted to Eurofins Environment Testing for analysis of BTEX following United States Environmental Protection Agency (EPA) Method 8021B, TPH following Method 8015M/D, and chloride following EPA Method 300.0.

Based on the laboratory analytical results, BTEX and TPH concentrations exceeding the NMOCD Closure Criteria were encountered in one soil sample collected at a depth of 1-foot bgs from hand auger borehole HA01. TPH concentrations exceeding the NMOCD Closure Criteria were encountered in one additional soil sample collected at a depth of 1-foot bgs from hand auger borehole HA02. BTEX, TPH, and/or chloride were either not detected above laboratory reporting limits or were not detected above the applicable Closure Criteria in any other analyzed samples. A summary of analytical results is summarized in Table 1 and Figure 2. Additional details regarding the initial Site investigation and delineation activities are provided in the *Remediation Work Plan* dated August 18, 2025.

## EXCAVATION SOIL SAMPLING ACTIVITIES

Based on the initial delineation sampling described above, Hilcorp conducted excavation activities between November 14, 2025, and December 5, 2025. Notification to the NMOCD was provided at least two business days prior to collecting confirmation soil samples, with correspondence attached as Appendix A. As stated above, the secondary containment liner was completely removed prior to beginning excavation activities in order to access and remove impacted soil at the Site.

To direct excavation activities, Ensolum personnel field screened soil for volatile organic compounds (VOCs) using a calibrated photoionization detector (PID). The excavation was advanced to depths of 1-foot to 3 feet bgs. Once field screening indicated impacted soil had been removed, 5-point composite soil samples were collected on November 14, 2025 from the floor (FS01 through FS07) and sidewalls (SW01 through SW05) of the excavation at a frequency not exceeding one sample per 200 square feet. The 5-point composite samples were collected by placing five equivalent aliquots of soil into a resealable plastic bag and homogenizing the samples by thoroughly mixing. The soil samples were placed into laboratory provided containers and transported under proper chain of custody procedures to Envirotech Analytical Laboratory (Envirotech) for analysis of TPH, BTEX, and chloride using the methods described above.

Analytical results from the November 14, 2025 excavation sampling event indicated concentrations of TPH, BTEX, and chloride were compliant with the Table I Closure Criteria in all samples with the exception of sidewall sample SW01@0-1'. On December 5, 2025, the excavation was extended to the southeast to remove impacted soil from sidewall area SW01. The floor of the excavation in this area was advanced to a depth of approximately 1-foot bgs and that elevation was maintained as the excavation was extended southeast. Once field screening indicated impacted soil had been removed, a new sidewall sample, SW06@0-2' was collected. At this location, the depth of the excavation had been maintained at the original grade of 1-foot bgs; however, the excavation was advanced laterally into the secondary containment berm and

sidewall area SW06 included berm material that was 1 foot above the original ground surface, making the sidewall approximately 2 feet in depth in this limited area. Because of the limited area requiring soil removal (about 50 square feet), an additional floor samples was not required at that time.

Sample SW06@0-2' indicated concentrations of TPH, BTEX, and chloride were compliant with NMOCD Table I Closure Criteria. Soil sample results are summarized in Table 2 and on Figure 3, with complete laboratory analytical reports attached as Appendix B. Photographs taken by Ensolum during the excavation work are presented in Appendix C. In total, approximately 142 cubic yards of impacted soil was removed from an area of approximately 1,320 square feet and transported to the Envirotech Landfarm located in San Juan County, New Mexico.

## CLOSURE REQUEST

Site excavation and sampling activities were conducted to address the release discovered on May 21, 2025. Laboratory analytical results for the excavation confirmation soil samples, collected from the final excavation extent, indicated all COC concentrations were compliant with the Site Closure Criteria and the reclamation requirement, and no further remediation is required. Hilcorp will not be resetting the tank in place, therefore no tank liner will be required. As such, the excavation will be backfilled to match surrounding grade and incorporated into the existing well pad and drive area. Excavation of impacted soil has mitigated impacts at this Site, and these remedial actions have been protective of human health, the environment, and groundwater. As such, Hilcorp respectfully requests closure for Incident Number nAPP2514234133.

We appreciate the opportunity to provide this report to the NMOCD. If you should have any questions or comments regarding this document, please contact the undersigned.

Sincerely,  
**Ensolum, LLC**



Tracy Dembrowski  
Project Geologist  
(720) 989-6175  
tdembrowski@ensolum.com



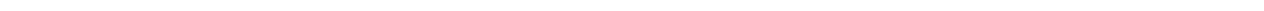
Stuart Hyde  
Senior Managing Geologist  
(970) 903-1607  
shyde@ensolum.com

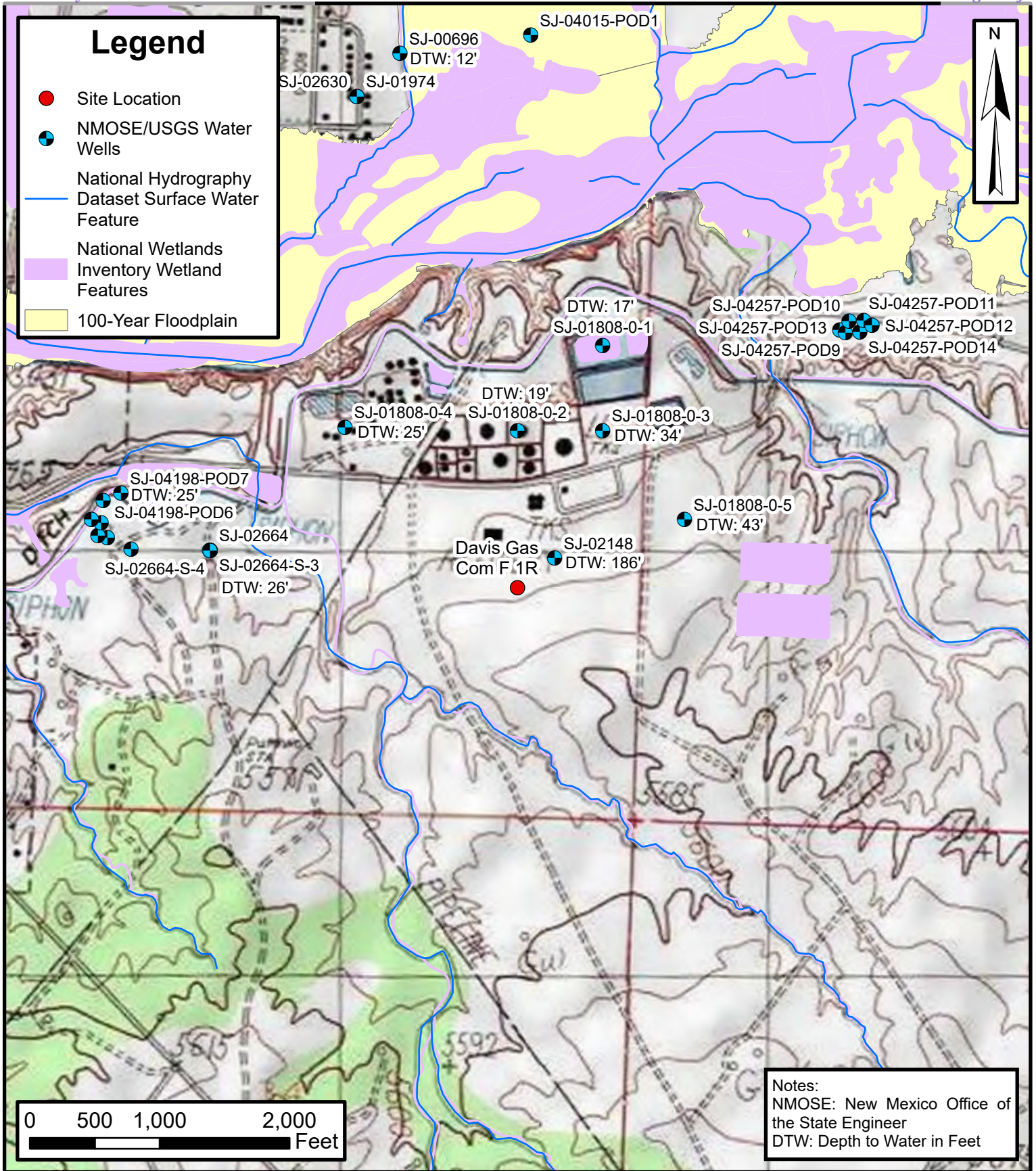
### Attachments:

- |             |  |
|-------------|--|
| Figure 1:   | Site Receptor Map                            |
| Figure 2:   | Soil Sample Location Map                     |
| Figure 3:   | Excavation Sample Location Map               |
| Table 1:    | Delineation Soil Sampling Analytical Results |
| Table 2:    | Excavation Soil Sample Analytical Results    |
| Appendix A: | Agency Correspondence                        |
| Appendix B: | Laboratory Analytical Reports                |
| Appendix C: | Photographic Log                             |



FIGURES





**Site Location Map**  
 Davis Gas Com F 1R  
 Hilcorp Energy Company  
 36.694682, -107.972068  
 San Juan County, New Mexico

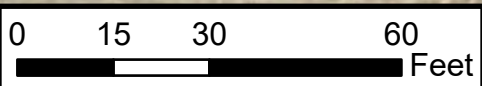
**FIGURE**  
**1**

# Legend

- Soil Sample Location in Compliance with NMOCD Closure Criteria
- Soil Sample Location with Terminus in Compliance with NMOCD Closure Criteria



Notes:  
 B: Benzene in Milligrams per Kilogram (mg/Kg)  
 BTEX: Total Benzene, Toluene, Ethylbenzene, and Xylenes (mg/Kg)  
 TPH: Total Petroleum Hydrocarbons (mg/Kg)  
 < : Indicates Result is below Laboratory Reporting Limit  
**Bold**: Indicates Results Exceed NMOCD Closure Criteria  
 NMOCD: New Mexico Oil Conservation Division



Default Folder: C:\Users\Greg Palese\OneDrive - ENSOLUM, LLC\Desktop\Ensolum GIS\1 - Durango\Hilcorp\Davis Gas Com F 1R



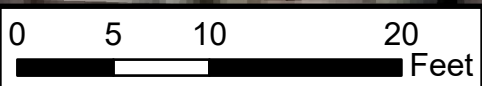
## Soil Sample Location Map

Davis Gas Com F 1R  
 Hilcorp Energy Company  
 36.694682, -107.972068  
 San Juan County, New Mexico

FIGURE  
**2**

# Legend

- Excavation Floor Sample in Compliance with NMOCD Closure Criteria
- ▲ Excavation Sidewall Sample in Compliance with NMOCD Closure Criteria
- ▲ Subsequently Excluded Sidewall Sample
- Excavation Extent



Notes:  
NMOCD: New Mexico Oil Conservation Division

Default Folder: C:\Users\Greg Palese\OneDrive - ENSOLUM, LLC\Desktop\Ensolum GIS\Ensolum GIS - Durango\Hilcorp\Davis Gas Com F 1R



## Excavation Sample Location Map

Davis Gas Com F 1R  
Hilcorp Energy Company  
36.694682, -107.972068  
San Juan County, New Mexico

FIGURE  
**3**



TABLES

<b>TABLE 1</b> <b>DELINEATION SOIL SAMPLE ANALYTICAL RESULTS</b> Davis Gas Com F 1R Hilcorp Energy Company San Juan County, New Mexico													
Sample Identification	Date	Depth (feet bgs)	PID (ppm)	Benzene (mg/kg)	Toluene (mg/kg)	Ethylbenzene (mg/kg)	Xylenes (mg/kg)	Total BTEX (mg/kg)	TPH GRO (mg/kg)	TPH DRO (mg/kg)	TPH MRO (mg/kg)	Total TPH (mg/kg)	Chloride (mg/kg)
<b>NMOCD Closure Criteria for Soils Impacted by a Release</b>			NE	<b>10</b>	NE	NE	NE	<b>50</b>	NE	NE	NE	<b>100</b>	<b>600</b>
HA01@1'	5/29/2025	1	>5,000	<0.125	4.94	4.01	79.4	<b>88.4</b>	626	2,500	214	<b>3,340</b>	146
HA01@5'	5/29/2025	5	55.1	<0.0250	<0.0250	<0.0250	<0.0250	<0.0250	<20.0	<25.0	<50.0	<50.0	<b>82.6</b>
HA02@1'	5/29/2025	1	>5,000	<0.0250	1.09	1.87	41.3	44.3	263	1,850	83.6	<b>2,197</b>	352
HA02@5'	5/29/2025	5	51.5	<0.0250	<0.0250	<0.0250	<0.0250	<0.0250	<20.0	<25.0	<50.0	<50.0	<20.0
HA03@2'	5/29/2025	2	4.6	<0.0250	<0.0250	<0.0250	<0.0250	<0.0250	<20.0	<25.0	<50.0	<50.0	<20.0
HA03@5'	5/29/2025	5	1.6	<0.0250	<0.0250	<0.0250	<0.0250	<0.0250	<20.0	<25.0	<50.0	<50.0	<40.0
HA04@4'	5/29/2025	4	5.5	<0.0250	<0.0250	<0.0250	<0.0250	<0.0250	<20.0	<25.0	<50.0	<50.0	<100
HA04@5'	5/29/2025	5	3.1	<0.0250	<0.0250	<0.0250	<0.0250	<0.0250	<20.0	<25.0	<50.0	<50.0	<40.0
HA05@1'	5/29/2025	1	3.3	<0.0250	<0.0250	<0.0250	<0.0250	<0.0250	<20.0	<25.0	<50.0	<50.0	<20.0
HA05@4'	5/29/2025	4	0.4	<0.0250	<0.0250	<0.0250	<0.0250	<0.0250	<20.0	<25.0	<50.0	<50.0	<b>29.5</b>
HA06@1'	5/29/2025	1	2.3	<0.0250	<0.0250	<0.0250	<0.0250	<0.0250	<20.0	<25.0	<50.0	<50.0	<20.0
HA06@5'	5/29/2025	5	0.0	<0.0250	<0.0250	<0.0250	<0.0250	<0.0250	<20.0	<25.0	<50.0	<50.0	<20.0

**Notes:**

bgs: Below ground surface  
 BTEX: Benzene, Toluene, Ethylbenzene, and Xylenes  
 mg/kg: Milligrams per kilogram  
 NE: Not Established  
 NMOCD: New Mexico Oil Conservation Division  
 PID: Photoionization detector  
 ppm: Parts per million

GRO: Gasoline Range Organics  
 DRO: Diesel Range Organics  
 MRO: Motor Oil/Lube Oil Range Organics  
 TPH: Total Petroleum Hydrocarbon

': Feet  
 <: Indicates result less than the stated laboratory reporting limit (RL)

Concentrations in **bold** and shaded exceed the New Mexico Oil Conservation Division Table 1 Closure Criteria for Soils Impacted by a Release



<b>TABLE 2</b> <b>EXCAVATION SOIL SAMPLE ANALYTICAL RESULTS</b> Davis Gas Com F 1R Hilcorp Energy Company San Juan County, New Mexico													
Sample Identification	Date	Depth (feet bgs)	PID (ppm)	Benzene (mg/kg)	Toluene (mg/kg)	Ethylbenzene (mg/kg)	Xylenes (mg/kg)	Total BTEX (mg/kg)	TPH GRO (mg/kg)	TPH DRO (mg/kg)	TPH MRO (mg/kg)	Total TPH (mg/kg)	Chloride (mg/kg)
<b>NMOCD Closure Criteria for Soils Impacted by a Release</b>			NE	10	NE	NE	NE	50	NE	NE	NE	100	600
<b>Excavation Floor Samples</b>													
FS01@1'	11/14/2025	1'	2.7	<0.0250	<0.0250	<0.0250	<0.0250	<0.0250	<20.0	<25.0	<50.0	<50.0	29.9
FS02@3'	11/14/2025	3	8.3	<0.0250	<0.0250	<0.0250	<0.0250	<0.0250	<20.0	<25.0	<50.0	<50.0	37.0
FS03@3'	11/14/2025	3	20.1	<0.0250	<0.0250	<0.0250	<0.0250	<0.0250	<20.0	<25.0	<50.0	<50.0	37.0
FS04@3'	11/14/2025	3	7.6	<0.0250	<0.0250	<0.0250	<0.0250	<0.0250	<20.0	<25.0	<50.0	<50.0	<20.0
FS05@3'	11/14/2025	3	17.9	<0.0250	<0.0250	<0.0250	<0.0250	<0.0250	<20.0	<25.0	<50.0	<50.0	54.6
FS06@3'	11/14/2025	3	21.2	<0.0250	<0.0250	<0.0250	<0.0250	<0.0250	<20.0	<25.0	<50.0	<50.0	23.2
FS07@3'	11/14/2025	3	11.6	<0.0250	<0.0250	<0.0250	<0.0250	<0.0250	<20.0	<25.0	<50.0	<50.0	<20.0
<b>Excavation Sidewall Samples</b>													
SW01@0-1'	11/14/2025	0 - 1	4.5	<0.0250	<0.0250	<0.0250	<0.0250	<0.0250	<20.0	48.6	89.9	<del>138.5</del>	31.8
SW02@0-3'	11/14/2025	0 - 3	3.5	<0.0250	<0.0250	<0.0250	<0.0250	<0.0250	<20.0	<25.0	<50.0	<50.0	34.6
SW03@0-3'	11/14/2025	0 - 3	1.2	<0.0250	<0.0250	<0.0250	<0.0250	<0.0250	<20.0	<25.0	<50.0	<50.0	49.0
SW04@0-3'	11/14/2025	0 - 3	10.7	<0.0250	<0.0250	<0.0250	<0.0250	<0.0250	<20.0	<25.0	<50.0	<50.0	<20.0
SW05@0-3'	11/14/2025	0 - 3	5.0	<0.0250	<0.0250	<0.0250	<0.0250	<0.0250	<20.0	<25.0	<50.0	<50.0	<20.0
SW06@0-2'	12/5/2025	0 - 2	0.0	<0.0250	<0.0250	<0.0250	<0.0250	<0.0250	<20.0	<25.0	<50.0	<50.0	68.2

**Notes:**

bgs: Below ground surface  
 BTEX: Benzene, Toluene, Ethylbenzene, and Xylenes  
 mg/kg: Milligrams per kilogram  
 NE: Not Established  
 NMOCD: New Mexico Oil Conservation Division  
 PID: Photoionization detector  
 ppm: Parts per million

GRO: Gasoline Range Organics  
 DRO: Diesel Range Organics  
 MRO: Motor Oil/Lube Oil Range Organics  
 TPH: Total Petroleum Hydrocarbon  
 <: Indicates result less than the stated laboratory reporting limit (RL)  
 Grey and strikethrough text represents soil sample areas that have been excavated  
 ': Feet



## APPENDIX A

### Agency Correspondence

---

**From:** [OCDOnline@state.nm.us](mailto:OCDOnline@state.nm.us)  
**To:** [Stuart Hyde](#)  
**Subject:** The Oil Conservation Division (OCD) has accepted the application, Application ID: 525288  
**Date:** Tuesday, November 11, 2025 9:26:20 AM

---

[\*\*EXTERNAL EMAIL\*\*]

To whom it may concern (c/o Stuart Hyde for HILCORP ENERGY COMPANY),

The OCD has received the submitted *Notification for (Final) Sampling of a Release (C-141N)*, for incident ID (n#) nAPP2514234133.

The sampling event is expected to take place:

**When:** 11/14/2025 @ 14:30

**Where:** I-27-29N-11W 1785 FSL 795 FEL (36.694682,-107.972068)

**Additional Information:** Stuart Hyde, 970-903-1607

**Additional Instructions:** Davis Gas Com F 1R, site coordinates 36.69462, -107.97268

An OCD representative may be available onsite at the date and time reported. In the absence or presence of an OCD representative, sampling pursuant to 19.15.29.12.D NMAC is required. Sampling must be performed following an approved sampling plan or pursuant to 19.15.29.12.D.(1).(c) NMAC. Should there be a change in the scheduled date and time of the sampling event, then another notification should be resubmitted through OCD permitting as soon as possible.

- **Failure to notify the OCD of sampling events including any changes in date/time per the requirements of 19.15.29.12.D.(1).(a) NMAC, may result in the remediation closure samples not being accepted.**
- **If confirmation sampling is going to take place over multiple days, individual C-141N applications must be submitted for each sampling date. Date ranges are not currently accepted on the C-141N application.**

If you have any questions regarding this application, or don't know why you have received this email, please contact us.

**New Mexico Energy, Minerals and Natural Resources Department**  
1220 South St. Francis Drive  
Santa Fe, NM 87505

**From:** [OCDOnline@state.nm.us](mailto:OCDOnline@state.nm.us)  
**To:** [Stuart Hyde](#)  
**Subject:** The Oil Conservation Division (OCD) has accepted the application, Application ID: 531344  
**Date:** Wednesday, December 3, 2025 6:53:38 AM

---

[\*\*EXTERNAL EMAIL\*\*]

To whom it may concern (c/o Stuart Hyde for HILCORP ENERGY COMPANY),

The OCD has received the submitted *Notification for (Final) Sampling of a Release* (C-141N), for incident ID (n#) nAPP2514234133.

The sampling event is expected to take place:

**When:** 12/05/2025 @ 10:15

**Where:** I-27-29N-11W 1785 FSL 795 FEL (36.694682,-107.972068)

**Additional Information:** Stuart Hyde, 970-903-1607

**Additional Instructions:** Davis Gas Com F 1R, site coordinates 36.69462, -107.97268

An OCD representative may be available onsite at the date and time reported. In the absence or presence of an OCD representative, sampling pursuant to 19.15.29.12.D NMAC is required. Sampling must be performed following an approved sampling plan or pursuant to 19.15.29.12.D.(1).(c) NMAC. Should there be a change in the scheduled date and time of the sampling event, then another notification should be resubmitted through OCD permitting as soon as possible.

- **Failure to notify the OCD of sampling events including any changes in date/time per the requirements of 19.15.29.12.D.(1).(a) NMAC, may result in the remediation closure samples not being accepted.**
- **If confirmation sampling is going to take place over multiple days, individual C-141N applications must be submitted for each sampling date. Date ranges are not currently accepted on the C-141N application.**

If you have any questions regarding this application, or don't know why you have received this email, please contact us.

**New Mexico Energy, Minerals and Natural Resources Department**  
1220 South St. Francis Drive  
Santa Fe, NM 87505

**From:** [OCDOnline@state.nm.us](mailto:OCDOnline@state.nm.us)  
**To:** [Stuart Hyde](#)  
**Subject:** The Oil Conservation Division (OCD) has approved the application, Application ID: 496643  
**Date:** Wednesday, August 20, 2025 1:58:08 PM

---

[\*\*EXTERNAL EMAIL\*\*]

To whom it may concern (c/o Stuart Hyde for HILCORP ENERGY COMPANY),

The OCD has approved the submitted *Application for administrative approval of a release notification and corrective action* (C-141), for incident ID (n#) nAPP2514234133, with the following conditions:

- **The Site Characterization and Remediation Work Plan is approved. Please include liner details in the next report submission. For example, where was the liner compromised and place the location on the approximate location on the site map. Please include details for restoring the liner or include details if the liner will be completely replaced. An email asking other details on this was sent to Stuart Hyde on 08/20/2025, to be included in the next report submission.**

The signed C-141 can be found in the OCD Online: Imaging under the incident ID (n#).

If you have any questions regarding this application, please contact me.

Thank you,  
Michael Buchanan  
Environmental Specialist  
505-490-0798  
[Michael.Buchanan@emnrd.nm.gov](mailto:Michael.Buchanan@emnrd.nm.gov)

**New Mexico Energy, Minerals and Natural Resources Department**  
1220 South St. Francis Drive  
Santa Fe, NM 87505

**From:** [Buchanan, Michael, EMNRD](#)  
**To:** [Stuart Hyde](#)  
**Subject:** Remediation Work Plan Davis Gas Com F 1R, Incident ID: nAPP2514234133  
**Date:** Wednesday, August 20, 2025 1:35:57 PM

---

[ \*\*EXTERNAL EMAIL\*\* ]

Good afternoon, Mr. Hyde

In review of the Remediation Work Plan for Davis Gas Com F 1R (App ID: **496643**) , there are a few questions related to the compromised liner.

1. How is the excavation going to take place underneath the liner? Will the liner be completely removed or just a portion of it with a patch to restore its integrity after remediation?
2. Will the liner be completely removed and replaced?
3. If the liner is planned to be completely replaced, what type of liner and what thickness will the replacement be?

Thank you,

**Mike Buchanan** • Environmental Specialist  
Environmental Bureau  
EMNRD - Oil Conservation Division  
5200 Oakland Ave NE, Suite B | Albuquerque, NM 87113  
505.490.0798 | [michael.buchanan@emnrd.nm.gov](mailto:michael.buchanan@emnrd.nm.gov)  
<http://www.emnrd.nm.gov/oed>



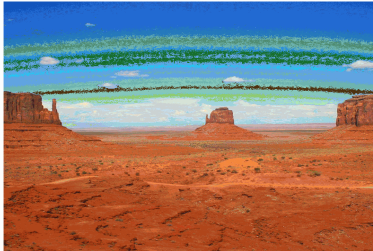


## APPENDIX B

# Laboratory Analytical Reports

---

Report to:  
Kate Kaufman



# envirotech

*Practical Solutions for a Better Tomorrow*

## Analytical Report

Hilcorp Energy Co

Project Name: Davis Gas Com F 1R

Work Order: E511221

Job Number: 17051-0002

Received: 11/14/2025

Revision: 1

Report Reviewed By:

Walter Hinchman  
Laboratory Director  
11/20/25

5796 U.S. Hwy 64  
Farmington, NM 87401

Phone: (505) 632-1881  
Envirotech-inc.com



Envirotech Inc. certifies the test results meet all requirements of TNI unless noted otherwise.  
Statement of Data Authenticity: Envirotech Inc, attests the data reported has not been altered in any way.  
Partial or incomplete reproduction of this report is prohibited, unless approved by Envirotech Inc.  
Envirotech Inc, holds the Utah TNI certification NM00979 for data reported.  
Envirotech Inc, holds the Texas TNI certification T104704557 for data reported.



Date Reported: 11/20/25

Kate Kaufman  
PO Box 61529  
Houston, TX 77208

Project Name: Davis Gas Com F 1R  
Workorder: E511221  
Date Received: 11/14/2025 4:20:00PM

Kate Kaufman,

Thank you for choosing Envirotech, Inc. as your analytical testing laboratory for the sample(s) received on, 11/14/2025 4:20:00PM, under the Project Name: Davis Gas Com F 1R.

The analytical test results summarized in this report with the Project Name: Davis Gas Com F 1R apply to the individual samples collected, identified and submitted bearing the project name on the enclosed chain-of-custody. Subcontracted sample analyses not conducted by Envirotech, Inc., are attached in full as issued by the subcontract laboratory.

Please review the Chain-of-Custody (COC) and Sample Receipt Checklist (SRC) for any issues regarding sample receipt temperature, containers, preservation etc. To best understand your test results, review the entire report summarizing your sample data and the associated quality control batch data.

All reported data in this analytical report were analyzed according to the referenced method(s) and are in compliance with the latest NELAC/TNI standards, unless otherwise noted. Samples or analytical quality control parameters not meeting specific QC criteria are qualified with a data flag. Data flag definitions are located in the Notes and Definitions section of this analytical report.

If you have any questions concerning this report, please feel free to contact Envirotech, Inc.

Respectfully,

**Walter Hinchman**  
Laboratory Director  
Office: 505-632-1881  
Cell: 775-287-1762  
[whinchman@envirotech-inc.com](mailto:whinchman@envirotech-inc.com)

**Raina Schwanz**  
Laboratory Administrator  
Office: 505-632-1881  
[rainaschwanz@envirotech-inc.com](mailto:rainaschwanz@envirotech-inc.com)

Field Offices:

**Southern New Mexico Area**

**Lynn Jarboe**  
Laboratory Technical Representative  
Office: 505-421-LABS(5227)  
Cell: 505-320-4759  
[ljjarboe@envirotech-inc.com](mailto:ljjarboe@envirotech-inc.com)

**Michelle Gonzales**  
Client Representative  
Office: 505-421-LABS(5227)  
Cell: 505-947-8222  
[mgonzales@envirotech-inc.com](mailto:mgonzales@envirotech-inc.com)

Envirotech Web Address: [www.envirotech-inc.com](http://www.envirotech-inc.com)

## Table of Contents

Title Page	1
Cover Page	2
Table of Contents	3
Sample Summary	4
Sample Data	5
FS01 @ 1'	5
FS02 @ 3'	6
FS03 @ 3'	7
FS04 @ 3'	8
FS05 @ 3'	9
FS06 @ 3'	10
FS07 @ 3'	11
SW01 @ 0-1'	12
SW02 @ 0-3'	13
SW03 @ 0-3'	14
SW04 @ 0-3'	15
SW05 @ 0-3'	16
QC Summary Data	17
QC - Volatile Organics by EPA 8021B	17
QC - Nonhalogenated Organics by EPA 8015D - GRO	18
QC - Nonhalogenated Organics by EPA 8015D - DRO/ORO	19
QC - Anions by EPA 300.0/9056A	20
Definitions and Notes	21
Chain of Custody etc.	22

**Sample Summary**

Hilcorp Energy Co PO Box 61529 Houston TX, 77208	Project Name: Davis Gas Com F 1R Project Number: 17051-0002 Project Manager: Kate Kaufman	<b>Reported:</b> 11/20/25 16:59
--	---	------------------------------------

Client Sample ID	Lab Sample ID	Matrix	Sampled	Received	Container
FS01 @ 1'	E511221-01A	Soil	11/14/25	11/14/25	Glass Jar, 4 oz.
FS02 @ 3'	E511221-02A	Soil	11/14/25	11/14/25	Glass Jar, 4 oz.
FS03 @ 3'	E511221-03A	Soil	11/14/25	11/14/25	Glass Jar, 4 oz.
FS04 @ 3'	E511221-04A	Soil	11/14/25	11/14/25	Glass Jar, 4 oz.
FS05 @ 3'	E511221-05A	Soil	11/14/25	11/14/25	Glass Jar, 4 oz.
FS06 @ 3'	E511221-06A	Soil	11/14/25	11/14/25	Glass Jar, 4 oz.
FS07 @ 3'	E511221-07A	Soil	11/14/25	11/14/25	Glass Jar, 4 oz.
SW01 @ 0-1'	E511221-08A	Soil	11/14/25	11/14/25	Glass Jar, 4 oz.
SW02 @ 0-3'	E511221-09A	Soil	11/14/25	11/14/25	Glass Jar, 4 oz.
SW03 @ 0-3'	E511221-10A	Soil	11/14/25	11/14/25	Glass Jar, 4 oz.
SW04 @ 0-3'	E511221-11A	Soil	11/14/25	11/14/25	Glass Jar, 4 oz.
SW05 @ 0-3'	E511221-12A	Soil	11/14/25	11/14/25	Glass Jar, 4 oz.



### Sample Data

Hilcorp Energy Co PO Box 61529 Houston TX, 77208	Project Name: Davis Gas Com F 1R Project Number: 17051-0002 Project Manager: Kate Kaufman	<b>Reported:</b> 11/20/2025 4:59:35PM
--	---	--

**FS01 @ 1'**  
**E511221-01**

Analyte	Result	Reporting Limit	Dilution	Prepared	Analyzed	Notes
<b>Volatile Organics by EPA 8021B</b>						
	mg/kg	mg/kg		Analyst: MB		Batch: 2547020
Benzene	ND	0.0250	1	11/17/25	11/17/25	
Ethylbenzene	ND	0.0250	1	11/17/25	11/17/25	
Toluene	ND	0.0250	1	11/17/25	11/17/25	
o-Xylene	ND	0.0250	1	11/17/25	11/17/25	
p,m-Xylene	ND	0.0500	1	11/17/25	11/17/25	
Total Xylenes	ND	0.0250	1	11/17/25	11/17/25	
<i>Surrogate: 4-Bromochlorobenzene-PID</i>						
		101 %	70-130	11/17/25	11/17/25	
<b>Nonhalogenated Organics by EPA 8015D - GRO</b>						
	mg/kg	mg/kg		Analyst: MB		Batch: 2547020
Gasoline Range Organics (C6-C10)	ND	20.0	1	11/17/25	11/17/25	
<i>Surrogate: 1-Chloro-4-fluorobenzene-FID</i>						
		87.8 %	70-130	11/17/25	11/17/25	
<b>Nonhalogenated Organics by EPA 8015D - DRO/ORO</b>						
	mg/kg	mg/kg		Analyst: HM		Batch: 2547024
Diesel Range Organics (C10-C28)	ND	25.0	1	11/17/25	11/18/25	
Oil Range Organics (C28-C36)	ND	50.0	1	11/17/25	11/18/25	
<i>Surrogate: n-Nonane</i>						
		94.1 %	61-141	11/17/25	11/18/25	
<b>Anions by EPA 300.0/9056A</b>						
	mg/kg	mg/kg		Analyst: TP		Batch: 2547025
Chloride	29.9	20.0	1	11/17/25	11/17/25	



## Sample Data

Hilcorp Energy Co PO Box 61529 Houston TX, 77208	Project Name: Davis Gas Com F 1R Project Number: 17051-0002 Project Manager: Kate Kaufman	<b>Reported:</b> 11/20/2025 4:59:35PM
--	---	--

FS02 @ 3'

E511221-02

Analyte	Result	Reporting Limit	Dilution	Prepared	Analyzed	Notes
<b>Volatile Organics by EPA 8021B</b>	mg/kg	mg/kg		Analyst: MB		Batch: 2547020
Benzene	ND	0.0250	1	11/17/25	11/17/25	
Ethylbenzene	ND	0.0250	1	11/17/25	11/17/25	
Toluene	ND	0.0250	1	11/17/25	11/17/25	
o-Xylene	ND	0.0250	1	11/17/25	11/17/25	
p,m-Xylene	ND	0.0500	1	11/17/25	11/17/25	
Total Xylenes	ND	0.0250	1	11/17/25	11/17/25	
<i>Surrogate: 4-Bromochlorobenzene-PID</i>		103 %	70-130	11/17/25	11/17/25	
<b>Nonhalogenated Organics by EPA 8015D - GRO</b>	mg/kg	mg/kg		Analyst: MB		Batch: 2547020
Gasoline Range Organics (C6-C10)	ND	20.0	1	11/17/25	11/17/25	
<i>Surrogate: 1-Chloro-4-fluorobenzene-FID</i>		87.8 %	70-130	11/17/25	11/17/25	
<b>Nonhalogenated Organics by EPA 8015D - DRO/ORO</b>	mg/kg	mg/kg		Analyst: HM		Batch: 2547024
Diesel Range Organics (C10-C28)	ND	25.0	1	11/17/25	11/18/25	
Oil Range Organics (C28-C36)	ND	50.0	1	11/17/25	11/18/25	
<i>Surrogate: n-Nonane</i>		91.4 %	61-141	11/17/25	11/18/25	
<b>Anions by EPA 300.0/9056A</b>	mg/kg	mg/kg		Analyst: TP		Batch: 2547025
Chloride	37.0	20.0	1	11/17/25	11/17/25	



## Sample Data

Hilcorp Energy Co PO Box 61529 Houston TX, 77208	Project Name: Davis Gas Com F 1R Project Number: 17051-0002 Project Manager: Kate Kaufman	<b>Reported:</b> 11/20/2025 4:59:35PM
--	---	--

FS03 @ 3'

E511221-03

Analyte	Result	Reporting Limit	Dilution	Prepared	Analyzed	Notes
<b>Volatile Organics by EPA 8021B</b>	mg/kg	mg/kg		Analyst: MB		Batch: 2547020
Benzene	ND	0.0250	1	11/17/25	11/17/25	
Ethylbenzene	ND	0.0250	1	11/17/25	11/17/25	
Toluene	ND	0.0250	1	11/17/25	11/17/25	
o-Xylene	ND	0.0250	1	11/17/25	11/17/25	
p,m-Xylene	ND	0.0500	1	11/17/25	11/17/25	
Total Xylenes	ND	0.0250	1	11/17/25	11/17/25	
<i>Surrogate: 4-Bromochlorobenzene-PID</i>		103 %	70-130	11/17/25	11/17/25	
<b>Nonhalogenated Organics by EPA 8015D - GRO</b>	mg/kg	mg/kg		Analyst: MB		Batch: 2547020
Gasoline Range Organics (C6-C10)	ND	20.0	1	11/17/25	11/17/25	
<i>Surrogate: 1-Chloro-4-fluorobenzene-FID</i>		87.3 %	70-130	11/17/25	11/17/25	
<b>Nonhalogenated Organics by EPA 8015D - DRO/ORO</b>	mg/kg	mg/kg		Analyst: HM		Batch: 2547024
Diesel Range Organics (C10-C28)	ND	25.0	1	11/17/25	11/18/25	
Oil Range Organics (C28-C36)	ND	50.0	1	11/17/25	11/18/25	
<i>Surrogate: n-Nonane</i>		93.0 %	61-141	11/17/25	11/18/25	
<b>Anions by EPA 300.0/9056A</b>	mg/kg	mg/kg		Analyst: TP		Batch: 2547025
Chloride	33.2	20.0	1	11/17/25	11/17/25	



## Sample Data

Hilcorp Energy Co PO Box 61529 Houston TX, 77208	Project Name: Davis Gas Com F 1R Project Number: 17051-0002 Project Manager: Kate Kaufman	<b>Reported:</b> 11/20/2025 4:59:35PM
--	---	--

FS04 @ 3'

E511221-04

Analyte	Result	Reporting Limit	Dilution	Prepared	Analyzed	Notes
<b>Volatile Organics by EPA 8021B</b>	mg/kg	mg/kg		Analyst: MB		Batch: 2547020
Benzene	ND	0.0250	1	11/17/25	11/17/25	
Ethylbenzene	ND	0.0250	1	11/17/25	11/17/25	
Toluene	ND	0.0250	1	11/17/25	11/17/25	
o-Xylene	ND	0.0250	1	11/17/25	11/17/25	
p,m-Xylene	ND	0.0500	1	11/17/25	11/17/25	
Total Xylenes	ND	0.0250	1	11/17/25	11/17/25	
<i>Surrogate: 4-Bromochlorobenzene-PID</i>		103 %	70-130	11/17/25	11/17/25	
<b>Nonhalogenated Organics by EPA 8015D - GRO</b>	mg/kg	mg/kg		Analyst: MB		Batch: 2547020
Gasoline Range Organics (C6-C10)	ND	20.0	1	11/17/25	11/17/25	
<i>Surrogate: 1-Chloro-4-fluorobenzene-FID</i>		87.5 %	70-130	11/17/25	11/17/25	
<b>Nonhalogenated Organics by EPA 8015D - DRO/ORO</b>	mg/kg	mg/kg		Analyst: HM		Batch: 2547024
Diesel Range Organics (C10-C28)	ND	25.0	1	11/17/25	11/18/25	
Oil Range Organics (C28-C36)	ND	50.0	1	11/17/25	11/18/25	
<i>Surrogate: n-Nonane</i>		93.3 %	61-141	11/17/25	11/18/25	
<b>Anions by EPA 300.0/9056A</b>	mg/kg	mg/kg		Analyst: TP		Batch: 2547025
Chloride	ND	20.0	1	11/17/25	11/17/25	



### Sample Data

Hilcorp Energy Co PO Box 61529 Houston TX, 77208	Project Name: Davis Gas Com F 1R Project Number: 17051-0002 Project Manager: Kate Kaufman	<b>Reported:</b> 11/20/2025 4:59:35PM
--	---	--

**FS05 @ 3'**

**E511221-05**

Analyte	Result	Reporting Limit	Dilution	Prepared	Analyzed	Notes
<b>Volatile Organics by EPA 8021B</b>	mg/kg	mg/kg		Analyst: MB		Batch: 2547020
Benzene	ND	0.0250	1	11/17/25	11/17/25	
Ethylbenzene	ND	0.0250	1	11/17/25	11/17/25	
Toluene	ND	0.0250	1	11/17/25	11/17/25	
o-Xylene	ND	0.0250	1	11/17/25	11/17/25	
p,m-Xylene	ND	0.0500	1	11/17/25	11/17/25	
Total Xylenes	ND	0.0250	1	11/17/25	11/17/25	
<i>Surrogate: 4-Bromochlorobenzene-PID</i>		102 %	70-130	11/17/25	11/17/25	
<b>Nonhalogenated Organics by EPA 8015D - GRO</b>	mg/kg	mg/kg		Analyst: MB		Batch: 2547020
Gasoline Range Organics (C6-C10)	ND	20.0	1	11/17/25	11/17/25	
<i>Surrogate: 1-Chloro-4-fluorobenzene-FID</i>		89.1 %	70-130	11/17/25	11/17/25	
<b>Nonhalogenated Organics by EPA 8015D - DRO/ORO</b>	mg/kg	mg/kg		Analyst: HM		Batch: 2547024
Diesel Range Organics (C10-C28)	ND	25.0	1	11/17/25	11/19/25	
Oil Range Organics (C28-C36)	ND	50.0	1	11/17/25	11/19/25	
<i>Surrogate: n-Nonane</i>		95.7 %	61-141	11/17/25	11/19/25	
<b>Anions by EPA 300.0/9056A</b>	mg/kg	mg/kg		Analyst: TP		Batch: 2547025
Chloride	54.6	20.0	1	11/17/25	11/17/25	



### Sample Data

Hilcorp Energy Co PO Box 61529 Houston TX, 77208	Project Name: Davis Gas Com F 1R Project Number: 17051-0002 Project Manager: Kate Kaufman	<b>Reported:</b> 11/20/2025 4:59:35PM
--	---	--

**FS06 @ 3'**

**E511221-06**

Analyte	Result	Reporting Limit	Dilution	Prepared	Analyzed	Notes
<b>Volatile Organics by EPA 8021B</b>	mg/kg	mg/kg		Analyst: MB		Batch: 2547020
Benzene	ND	0.0250	1	11/17/25	11/17/25	
Ethylbenzene	ND	0.0250	1	11/17/25	11/17/25	
Toluene	ND	0.0250	1	11/17/25	11/17/25	
o-Xylene	ND	0.0250	1	11/17/25	11/17/25	
p,m-Xylene	ND	0.0500	1	11/17/25	11/17/25	
Total Xylenes	ND	0.0250	1	11/17/25	11/17/25	
<i>Surrogate: 4-Bromochlorobenzene-PID</i>		103 %	70-130	11/17/25	11/17/25	
<b>Nonhalogenated Organics by EPA 8015D - GRO</b>	mg/kg	mg/kg		Analyst: MB		Batch: 2547020
Gasoline Range Organics (C6-C10)	ND	20.0	1	11/17/25	11/17/25	
<i>Surrogate: 1-Chloro-4-fluorobenzene-FID</i>		86.7 %	70-130	11/17/25	11/17/25	
<b>Nonhalogenated Organics by EPA 8015D - DRO/ORO</b>	mg/kg	mg/kg		Analyst: HM		Batch: 2547024
Diesel Range Organics (C10-C28)	ND	25.0	1	11/17/25	11/19/25	
Oil Range Organics (C28-C36)	ND	50.0	1	11/17/25	11/19/25	
<i>Surrogate: n-Nonane</i>		94.3 %	61-141	11/17/25	11/19/25	
<b>Anions by EPA 300.0/9056A</b>	mg/kg	mg/kg		Analyst: TP		Batch: 2547025
Chloride	23.2	20.0	1	11/17/25	11/17/25	



### Sample Data

Hilcorp Energy Co PO Box 61529 Houston TX, 77208	Project Name: Davis Gas Com F 1R Project Number: 17051-0002 Project Manager: Kate Kaufman	<b>Reported:</b> 11/20/2025 4:59:35PM
--	---	--

**FS07 @ 3'**

**E511221-07**

Analyte	Result	Reporting Limit	Dilution	Prepared	Analyzed	Notes
<b>Volatile Organics by EPA 8021B</b>	mg/kg	mg/kg		Analyst: MB		Batch: 2547020
Benzene	ND	0.0250	1	11/17/25	11/17/25	
Ethylbenzene	ND	0.0250	1	11/17/25	11/17/25	
Toluene	ND	0.0250	1	11/17/25	11/17/25	
o-Xylene	ND	0.0250	1	11/17/25	11/17/25	
p,m-Xylene	ND	0.0500	1	11/17/25	11/17/25	
Total Xylenes	ND	0.0250	1	11/17/25	11/17/25	
<i>Surrogate: 4-Bromochlorobenzene-PID</i>		103 %	70-130	11/17/25	11/17/25	
<b>Nonhalogenated Organics by EPA 8015D - GRO</b>	mg/kg	mg/kg		Analyst: MB		Batch: 2547020
Gasoline Range Organics (C6-C10)	ND	20.0	1	11/17/25	11/17/25	
<i>Surrogate: 1-Chloro-4-fluorobenzene-FID</i>		87.2 %	70-130	11/17/25	11/17/25	
<b>Nonhalogenated Organics by EPA 8015D - DRO/ORO</b>	mg/kg	mg/kg		Analyst: HM		Batch: 2547024
Diesel Range Organics (C10-C28)	ND	25.0	1	11/17/25	11/19/25	
Oil Range Organics (C28-C36)	ND	50.0	1	11/17/25	11/19/25	
<i>Surrogate: n-Nonane</i>		95.1 %	61-141	11/17/25	11/19/25	
<b>Anions by EPA 300.0/9056A</b>	mg/kg	mg/kg		Analyst: TP		Batch: 2547025
Chloride	ND	20.0	1	11/17/25	11/17/25	



### Sample Data

Hilcorp Energy Co PO Box 61529 Houston TX, 77208	Project Name: Davis Gas Com F 1R Project Number: 17051-0002 Project Manager: Kate Kaufman	<b>Reported:</b> 11/20/2025 4:59:35PM
--	---	--

**SW01 @ 0-1'**

**E511221-08**

Analyte	Result	Reporting Limit	Dilution	Prepared	Analyzed	Notes
<b>Volatile Organics by EPA 8021B</b>						
	mg/kg	mg/kg		Analyst: MB		Batch: 2547020
Benzene	ND	0.0250	1	11/17/25	11/17/25	
Ethylbenzene	ND	0.0250	1	11/17/25	11/17/25	
Toluene	ND	0.0250	1	11/17/25	11/17/25	
o-Xylene	ND	0.0250	1	11/17/25	11/17/25	
p,m-Xylene	ND	0.0500	1	11/17/25	11/17/25	
Total Xylenes	ND	0.0250	1	11/17/25	11/17/25	
<i>Surrogate: 4-Bromochlorobenzene-PID</i>						
		102 %	70-130	11/17/25	11/17/25	
<b>Nonhalogenated Organics by EPA 8015D - GRO</b>						
	mg/kg	mg/kg		Analyst: MB		Batch: 2547020
Gasoline Range Organics (C6-C10)	ND	20.0	1	11/17/25	11/17/25	
<i>Surrogate: 1-Chloro-4-fluorobenzene-FID</i>						
		86.5 %	70-130	11/17/25	11/17/25	
<b>Nonhalogenated Organics by EPA 8015D - DRO/ORO</b>						
	mg/kg	mg/kg		Analyst: HM		Batch: 2547024
Diesel Range Organics (C10-C28)	48.6	25.0	1	11/17/25	11/19/25	
Oil Range Organics (C28-C36)	89.9	50.0	1	11/17/25	11/19/25	
<i>Surrogate: n-Nonane</i>						
		97.0 %	61-141	11/17/25	11/19/25	
<b>Anions by EPA 300.0/9056A</b>						
	mg/kg	mg/kg		Analyst: TP		Batch: 2547025
Chloride	31.8	20.0	1	11/17/25	11/18/25	



### Sample Data

Hilcorp Energy Co PO Box 61529 Houston TX, 77208	Project Name: Davis Gas Com F 1R Project Number: 17051-0002 Project Manager: Kate Kaufman	<b>Reported:</b> 11/20/2025 4:59:35PM
--	---	--

**SW02 @ 0-3'**

**E511221-09**

Analyte	Result	Reporting Limit	Dilution	Prepared	Analyzed	Notes
<b>Volatile Organics by EPA 8021B</b>	mg/kg	mg/kg		Analyst: MB		Batch: 2547020
Benzene	ND	0.0250	1	11/17/25	11/17/25	
Ethylbenzene	ND	0.0250	1	11/17/25	11/17/25	
Toluene	ND	0.0250	1	11/17/25	11/17/25	
o-Xylene	ND	0.0250	1	11/17/25	11/17/25	
p,m-Xylene	ND	0.0500	1	11/17/25	11/17/25	
Total Xylenes	ND	0.0250	1	11/17/25	11/17/25	
<i>Surrogate: 4-Bromochlorobenzene-PID</i>		104 %	70-130	11/17/25	11/17/25	
<b>Nonhalogenated Organics by EPA 8015D - GRO</b>	mg/kg	mg/kg		Analyst: MB		Batch: 2547020
Gasoline Range Organics (C6-C10)	ND	20.0	1	11/17/25	11/17/25	
<i>Surrogate: 1-Chloro-4-fluorobenzene-FID</i>		87.8 %	70-130	11/17/25	11/17/25	
<b>Nonhalogenated Organics by EPA 8015D - DRO/ORO</b>	mg/kg	mg/kg		Analyst: HM		Batch: 2547024
Diesel Range Organics (C10-C28)	ND	25.0	1	11/17/25	11/19/25	
Oil Range Organics (C28-C36)	ND	50.0	1	11/17/25	11/19/25	
<i>Surrogate: n-Nonane</i>		93.4 %	61-141	11/17/25	11/19/25	
<b>Anions by EPA 300.0/9056A</b>	mg/kg	mg/kg		Analyst: TP		Batch: 2547025
Chloride	34.6	20.0	1	11/17/25	11/18/25	



### Sample Data

Hilcorp Energy Co PO Box 61529 Houston TX, 77208	Project Name: Davis Gas Com F 1R Project Number: 17051-0002 Project Manager: Kate Kaufman	<b>Reported:</b> 11/20/2025 4:59:35PM
--	---	--

**SW03 @ 0-3'**

**E511221-10**

Analyte	Result	Reporting Limit	Dilution	Prepared	Analyzed	Notes
<b>Volatile Organics by EPA 8021B</b>						
	mg/kg	mg/kg		Analyst: MB		Batch: 2547020
Benzene	ND	0.0250	1	11/17/25	11/17/25	
Ethylbenzene	ND	0.0250	1	11/17/25	11/17/25	
Toluene	ND	0.0250	1	11/17/25	11/17/25	
o-Xylene	ND	0.0250	1	11/17/25	11/17/25	
p,m-Xylene	ND	0.0500	1	11/17/25	11/17/25	
Total Xylenes	ND	0.0250	1	11/17/25	11/17/25	
<i>Surrogate: 4-Bromochlorobenzene-PID</i>						
		103 %	70-130	11/17/25	11/17/25	
<b>Nonhalogenated Organics by EPA 8015D - GRO</b>						
	mg/kg	mg/kg		Analyst: MB		Batch: 2547020
Gasoline Range Organics (C6-C10)	ND	20.0	1	11/17/25	11/17/25	
<i>Surrogate: 1-Chloro-4-fluorobenzene-FID</i>						
		87.2 %	70-130	11/17/25	11/17/25	
<b>Nonhalogenated Organics by EPA 8015D - DRO/ORO</b>						
	mg/kg	mg/kg		Analyst: HM		Batch: 2547024
Diesel Range Organics (C10-C28)	ND	25.0	1	11/17/25	11/19/25	
Oil Range Organics (C28-C36)	ND	50.0	1	11/17/25	11/19/25	
<i>Surrogate: n-Nonane</i>						
		96.6 %	61-141	11/17/25	11/19/25	
<b>Anions by EPA 300.0/9056A</b>						
	mg/kg	mg/kg		Analyst: TP		Batch: 2547025
Chloride	49.0	20.0	1	11/17/25	11/18/25	



### Sample Data

Hilcorp Energy Co PO Box 61529 Houston TX, 77208	Project Name: Davis Gas Com F 1R Project Number: 17051-0002 Project Manager: Kate Kaufman	<b>Reported:</b> 11/20/2025 4:59:35PM
--	---	--

**SW04 @ 0-3'**

**E511221-11**

Analyte	Result	Reporting Limit	Dilution	Prepared	Analyzed	Notes
<b>Volatile Organics by EPA 8021B</b>						
	mg/kg	mg/kg		Analyst: MB		Batch: 2547020
Benzene	ND	0.0250	1	11/17/25	11/17/25	
Ethylbenzene	ND	0.0250	1	11/17/25	11/17/25	
Toluene	ND	0.0250	1	11/17/25	11/17/25	
o-Xylene	ND	0.0250	1	11/17/25	11/17/25	
p,m-Xylene	ND	0.0500	1	11/17/25	11/17/25	
Total Xylenes	ND	0.0250	1	11/17/25	11/17/25	
<i>Surrogate: 4-Bromochlorobenzene-PID</i>						
		102 %	70-130	11/17/25	11/17/25	
<b>Nonhalogenated Organics by EPA 8015D - GRO</b>						
	mg/kg	mg/kg		Analyst: MB		Batch: 2547020
Gasoline Range Organics (C6-C10)	ND	20.0	1	11/17/25	11/17/25	
<i>Surrogate: 1-Chloro-4-fluorobenzene-FID</i>						
		86.6 %	70-130	11/17/25	11/17/25	
<b>Nonhalogenated Organics by EPA 8015D - DRO/ORO</b>						
	mg/kg	mg/kg		Analyst: HM		Batch: 2547024
Diesel Range Organics (C10-C28)	ND	25.0	1	11/17/25	11/19/25	
Oil Range Organics (C28-C36)	ND	50.0	1	11/17/25	11/19/25	
<i>Surrogate: n-Nonane</i>						
		93.1 %	61-141	11/17/25	11/19/25	
<b>Anions by EPA 300.0/9056A</b>						
	mg/kg	mg/kg		Analyst: TP		Batch: 2547025
Chloride	ND	20.0	1	11/17/25	11/18/25	



### Sample Data

Hilcorp Energy Co PO Box 61529 Houston TX, 77208	Project Name: Davis Gas Com F 1R Project Number: 17051-0002 Project Manager: Kate Kaufman	<b>Reported:</b> 11/20/2025 4:59:35PM
--	---	--

**SW05 @ 0-3'**

**E511221-12**

Analyte	Result	Reporting Limit	Dilution	Prepared	Analyzed	Notes
<b>Volatile Organics by EPA 8021B</b>						
	mg/kg	mg/kg		Analyst: MB		Batch: 2547020
Benzene	ND	0.0250	1	11/17/25	11/17/25	
Ethylbenzene	ND	0.0250	1	11/17/25	11/17/25	
Toluene	ND	0.0250	1	11/17/25	11/17/25	
o-Xylene	ND	0.0250	1	11/17/25	11/17/25	
p,m-Xylene	ND	0.0500	1	11/17/25	11/17/25	
Total Xylenes	ND	0.0250	1	11/17/25	11/17/25	
<i>Surrogate: 4-Bromochlorobenzene-PID</i>						
		102 %	70-130	11/17/25	11/17/25	
<b>Nonhalogenated Organics by EPA 8015D - GRO</b>						
	mg/kg	mg/kg		Analyst: MB		Batch: 2547020
Gasoline Range Organics (C6-C10)	ND	20.0	1	11/17/25	11/17/25	
<i>Surrogate: 1-Chloro-4-fluorobenzene-FID</i>						
		87.1 %	70-130	11/17/25	11/17/25	
<b>Nonhalogenated Organics by EPA 8015D - DRO/ORO</b>						
	mg/kg	mg/kg		Analyst: HM		Batch: 2547024
Diesel Range Organics (C10-C28)	ND	25.0	1	11/17/25	11/19/25	
Oil Range Organics (C28-C36)	ND	50.0	1	11/17/25	11/19/25	
<i>Surrogate: n-Nonane</i>						
		95.7 %	61-141	11/17/25	11/19/25	
<b>Anions by EPA 300.0/9056A</b>						
	mg/kg	mg/kg		Analyst: TP		Batch: 2547025
Chloride	ND	20.0	1	11/17/25	11/18/25	



### QC Summary Data

Hilcorp Energy Co PO Box 61529 Houston TX, 77208	Project Name: Davis Gas Com F 1R Project Number: 17051-0002 Project Manager: Kate Kaufman	Reported: 11/20/2025 4:59:35PM
--	---	-----------------------------------

#### Volatile Organics by EPA 8021B

Analyst: MB

Analyte	Result	Reporting Limit	Spike Level	Source Result	Rec %	Rec Limits	RPD %	RPD Limit	Notes
	mg/kg	mg/kg	mg/kg	mg/kg	%	%	%	%	

**Blank (2547020-BLK1)**

Prepared: 11/17/25 Analyzed: 11/19/25

Benzene	ND	0.0250							
Ethylbenzene	ND	0.0250							
Toluene	ND	0.0250							
o-Xylene	ND	0.0250							
p,m-Xylene	ND	0.0500							
Total Xylenes	ND	0.0250							
Surrogate: 4-Bromochlorobenzene-PID	7.85		8.00		98.2	70-130			

**LCS (2547020-BS1)**

Prepared: 11/17/25 Analyzed: 11/17/25

Benzene	4.61	0.0250	5.00		92.1	70-130			
Ethylbenzene	4.45	0.0250	5.00		89.0	70-130			
Toluene	4.54	0.0250	5.00		90.9	70-130			
o-Xylene	4.48	0.0250	5.00		89.6	70-130			
p,m-Xylene	9.10	0.0500	10.0		91.0	70-130			
Total Xylenes	13.6	0.0250	15.0		90.5	70-130			
Surrogate: 4-Bromochlorobenzene-PID	7.80		8.00		97.5	70-130			

**Matrix Spike (2547020-MS1)**

Source: E511221-05

Prepared: 11/17/25 Analyzed: 11/17/25

Benzene	4.76	0.0250	5.00	ND	95.2	70-130			
Ethylbenzene	4.57	0.0250	5.00	ND	91.5	70-130			
Toluene	4.69	0.0250	5.00	ND	93.7	70-130			
o-Xylene	4.64	0.0250	5.00	ND	92.8	70-130			
p,m-Xylene	9.37	0.0500	10.0	ND	93.7	70-130			
Total Xylenes	14.0	0.0250	15.0	ND	93.4	70-130			
Surrogate: 4-Bromochlorobenzene-PID	8.16		8.00		102	70-130			

**Matrix Spike Dup (2547020-MSD1)**

Source: E511221-05

Prepared: 11/17/25 Analyzed: 11/17/25

Benzene	4.62	0.0250	5.00	ND	92.4	70-130	2.91	27	
Ethylbenzene	4.44	0.0250	5.00	ND	88.8	70-130	2.95	26	
Toluene	4.55	0.0250	5.00	ND	91.1	70-130	2.85	20	
o-Xylene	4.54	0.0250	5.00	ND	90.7	70-130	2.28	25	
p,m-Xylene	9.11	0.0500	10.0	ND	91.1	70-130	2.79	23	
Total Xylenes	13.7	0.0250	15.0	ND	91.0	70-130	2.62	26	
Surrogate: 4-Bromochlorobenzene-PID	8.04		8.00		101	70-130			



### QC Summary Data

Hilcorp Energy Co PO Box 61529 Houston TX, 77208	Project Name: Davis Gas Com F 1R Project Number: 17051-0002 Project Manager: Kate Kaufman	<b>Reported:</b> 11/20/2025 4:59:35PM
--	---	--

#### Nonhalogenated Organics by EPA 8015D - GRO

Analyst: MB

Analyte	Result mg/kg	Reporting Limit mg/kg	Spike Level mg/kg	Source Result mg/kg	Rec % %	Rec Limits %	RPD %	RPD Limit %	Notes
---------	-----------------	-----------------------------	-------------------------	---------------------------	---------------	--------------------	----------	-------------------	-------

**Blank (2547020-BLK1)**

Prepared: 11/17/25 Analyzed: 11/19/25

Gasoline Range Organics (C6-C10)	ND	20.0							
Surrogate: 1-Chloro-4-fluorobenzene-FID	7.03		8.00		87.9	70-130			

**LCS (2547020-BS2)**

Prepared: 11/17/25 Analyzed: 11/17/25

Gasoline Range Organics (C6-C10)	43.9	20.0	50.0		87.8	70-130			
Surrogate: 1-Chloro-4-fluorobenzene-FID	7.26		8.00		90.7	70-130			

**Matrix Spike (2547020-MS2)**

Source: E511221-05

Prepared: 11/17/25 Analyzed: 11/17/25

Gasoline Range Organics (C6-C10)	50.5	20.0	50.0	ND	101	70-130			
Surrogate: 1-Chloro-4-fluorobenzene-FID	7.08		8.00		88.6	70-130			

**Matrix Spike Dup (2547020-MSD2)**

Source: E511221-05

Prepared: 11/17/25 Analyzed: 11/17/25

Gasoline Range Organics (C6-C10)	52.0	20.0	50.0	ND	104	70-130	2.98	20	
Surrogate: 1-Chloro-4-fluorobenzene-FID	7.18		8.00		89.8	70-130			



### QC Summary Data

Hilcorp Energy Co PO Box 61529 Houston TX, 77208	Project Name: Davis Gas Com F 1R Project Number: 17051-0002 Project Manager: Kate Kaufman	<b>Reported:</b> 11/20/2025 4:59:35PM
--	---	--

#### Nonhalogenated Organics by EPA 8015D - DRO/ORO

Analyst: HM

Analyte	Result mg/kg	Reporting Limit mg/kg	Spike Level mg/kg	Source Result mg/kg	Rec %	Rec Limits %	RPD %	RPD Limit %	Notes
---------	-----------------	-----------------------------	-------------------------	---------------------------	----------	--------------------	----------	-------------------	-------

**Blank (2547024-BLK1)**

Prepared: 11/17/25 Analyzed: 11/18/25

Diesel Range Organics (C10-C28)	ND	25.0							
Oil Range Organics (C28-C36)	ND	50.0							
Surrogate: <i>n</i> -Nonane	46.2		50.0		92.5	61-141			

**LCS (2547024-BS1)**

Prepared: 11/17/25 Analyzed: 11/18/25

Diesel Range Organics (C10-C28)	222	25.0	250		88.8	66-144			
Surrogate: <i>n</i> -Nonane	46.4		50.0		92.8	61-141			

**Matrix Spike (2547024-MS1)**

Source: E511221-03

Prepared: 11/17/25 Analyzed: 11/18/25

Diesel Range Organics (C10-C28)	239	25.0	250	ND	95.6	56-156			
Surrogate: <i>n</i> -Nonane	46.4		50.0		92.8	61-141			

**Matrix Spike Dup (2547024-MSD1)**

Source: E511221-03

Prepared: 11/17/25 Analyzed: 11/18/25

Diesel Range Organics (C10-C28)	237	25.0	250	ND	94.8	56-156	0.824	20	
Surrogate: <i>n</i> -Nonane	47.9		50.0		95.8	61-141			



### QC Summary Data

Hilcorp Energy Co PO Box 61529 Houston TX, 77208	Project Name: Davis Gas Com F 1R Project Number: 17051-0002 Project Manager: Kate Kaufman	<b>Reported:</b> 11/20/2025 4:59:35PM
--	---	--

#### Anions by EPA 300.0/9056A

Analyst: TP

Analyte	Result mg/kg	Reporting Limit mg/kg	Spike Level mg/kg	Source Result mg/kg	Rec %	Rec Limits %	RPD %	RPD Limit %	Notes
---------	-----------------	-----------------------------	-------------------------	---------------------------	----------	--------------------	----------	-------------------	-------

**Blank (2547025-BLK1)**

Prepared: 11/17/25 Analyzed: 11/17/25

Chloride ND 20.0

**LCS (2547025-BS1)**

Prepared: 11/17/25 Analyzed: 11/17/25

Chloride 258 20.0 250 103 90-110

**Matrix Spike (2547025-MS1)**

Source: E511221-03

Prepared: 11/17/25 Analyzed: 11/17/25

Chloride 294 20.0 250 33.2 104 80-120

**Matrix Spike Dup (2547025-MSD1)**

Source: E511221-03

Prepared: 11/17/25 Analyzed: 11/17/25

Chloride 295 20.0 250 33.2 105 80-120 0.235 20

QC Summary Report Comment:

Calculations are based off of the raw (non-rounded) data. However, for reporting purposes all QC data is rounded to three significant figures. Therefore, hand calculated values may differ slightly.



### Definitions and Notes

Hilcorp Energy Co	Project Name:	Davis Gas Com F 1R	
PO Box 61529	Project Number:	17051-0002	<b>Reported:</b>
Houston TX, 77208	Project Manager:	Kate Kaufman	11/20/25 16:59

ND Analyte NOT DETECTED at or above the reporting limit

NR Not Reported

RPD Relative Percent Difference

DNI Did Not Ignite

DNR Did not react with the addition of acid or base.

Note (1): Methods marked with \*\* are non-accredited methods.

Note (2): Soil data is reported on an "as received" weight basis, unless reported otherwise.



Chain of Custody

Corrected project name per Client. 11/17/25 CM

Client Information				Invoice Information				Lab Use Only				TAT				State																							
Client: <u>Hilcorp</u>				Company:				Lab WO# <u>F511221</u>				Job Number <u>17051-000Z</u>				<table border="1"> <tr> <td>1D</td><td>2D</td><td>3D</td><td>Std</td> </tr> <tr> <td></td><td></td><td></td><td>X</td> </tr> </table>				1D	2D	3D	Std				X	<table border="1"> <tr> <td>NM</td><td>CO</td><td>UT</td><td>TX</td> </tr> <tr> <td>X</td><td></td><td></td><td></td> </tr> </table>				NM	CO	UT	TX	X			
1D	2D	3D	Std																																				
			X																																				
NM	CO	UT	TX																																				
X																																							
Project Name: <u>Davis Gas com + FIR</u>				Address:																																			
Project Manager: <u>Kate Kaufman</u>				City, State, Zip:																																			
Address:				Phone:																																			
City, State, Zip:				Email:																																			
Phone:				Miscellaneous:																																			
Email: <u>kkaufman@hilcorp.com</u>																																							
Sample Information										Analysis and Method						EPA Program																							
Time Sampled	Date Sampled	Matrix	No. of Containers	Sample ID	Field Filter	Lab Number	DRO/DRO by 8015	GRO/DRO by 8015	BTEX by 8021	VOC by 8260	Chloride 300.0	BGDOC - NM	TEQ 1005 - TX	RCRA 8 Metals	SDWA	CWA	RCRA																						
															Compliance	Y or N																							
															PWSID #																								
																	Remarks																						
1435	11/14/25	SOIL	1-4oz	F501@1'		1	X	X	X	X								3.6																					
1500				F502@3'		2	X	X	X	X								3.4																					
1503				F503@3'		3	X	X	X	X								4.2																					
1505				F504@3'		4	X	X	X	X								4.5																					
1507				F505@3'		5	X	X	X	X								4.0																					
1509				F506@3'		6	X	X	X	X								3.6																					
1511				F507@3'		7	X	X	X	X								3.8																					
1437				SW01@0-1'		8	X	X	X	X								4.7																					
1513				SW02@0-3'		9	X	X	X	X								4.0																					
1515				SW03@0-3'		10	X	X	X	X								4.0																					
Additional Instructions: <u>please cc shydee.ensolum.com, tdembrowski@ensolum.com</u>																																							
I, (field sampler), attest to the validity and authenticity of this sample. I am aware that tampering with or intentionally mislabeling the sample location, date or time of collection is considered fraud and may be grounds for legal action.																																							
Sampled by: <u>Tracy Dembrowski</u>																																							
Relinquished by: (Signature) <u>[Signature]</u>				Date <u>11/14/25</u>		Time <u>1620</u>		Received by: (Signature) <u>[Signature]</u>				Date <u>11-14-25</u>		Time <u>1600</u>		Samples requiring thermal preservation must be received on ice the day they are sampled or received packed in ice at an avg temp above 0 but less than 6 °C on subsequent days. Lab Use Only Received on Ice: <input checked="" type="radio"/> Y <input type="radio"/> N T1 _____ T2 _____ T3 _____ AVG Temp °C _____																							
Relinquished by: (Signature)				Date		Time		Received by: (Signature)				Date		Time																									
Relinquished by: (Signature)				Date		Time		Received by: (Signature)				Date		Time																									
Relinquished by: (Signature)				Date		Time		Received by: (Signature)				Date		Time																									
Sample Matrix: <u>S - Soil, Sd - Solid, Sg - Sludge, A - Aqueous, O - Other</u>										Container Type: <u>g - glass, p - poly/plastic, ag - amber glass, v - VOA</u>																													
Note: Samples are discarded 14 days after results are reported unless other arrangements are made. Hazardous samples will be returned to client or disposed of at the client expense. The report for the analysis of the above samples is applicable only to those samples received by the laboratory with this COC. The liability of the laboratory is limited to the amount paid for on the report.																																							



Chain of Custody

Corrected project name per client 11/17/25 CM

Client Information				Invoice Information				Lab Use Only				TAT				State			
Client: Hilcorp				Company:				Lab WO#		Job Number		1D	2D	3D	Std	NM	CO	UT	TX
Project Name: Davis Gas com + FIR				Address:				E511221		17051-0002					X	X			
Project Manager: Kate Kaufman				City, State, Zip:															
Address:				Phone:															
City, State, Zip:				Email:															
Phone:				Miscellaneous:															
Email: kkaufman@hilcorp.com																			
Sample Information										Analysis and Method						EPA Program			
Time Sampled	Date Sampled	Matrix	No. of Containers	Sample ID	Field Filter	Lab Number	DRO/DRO by 8015	GRO/DRO by 8015	BTEX by 8021	VOC by 8260	Chloride 300.0	BEDOC - NM	TEQ.1005 - TX	RCRA 8 Metals	SDWA	CWA	RCRA	Compliance	PWSID #
															Y	or	N		
1517	11/14/25	SOIL	1-4oz	SW04@ 0-3'		11	X	X	X	X									
1519	↓	↓	↓	SW05@ 0-3'		12	X	X	X	X									
Additional Instructions: Please see page 1																			
I, (field sampler), attest to the validity and authenticity of this sample. I am aware that tampering with or intentionally mislabeling the sample location, date or time of collection is considered fraud and may be grounds for legal action.																			
Sampled by: Tracy Dembrowski																			
Relinquished by: (Signature)				Date		Time		Received by: (Signature)				Date		Time		Samples requiring thermal preservation must be received on ice the day they are sampled or received packed in ice at an avg temp above 0 but less than 6 °C on subsequent days. Lab Use Only Received on ice: <input checked="" type="radio"/> Y / <input type="radio"/> N T1 _____ T2 _____ T3 _____ AVG Temp °C _____			
Relinquished by: (Signature)				Date		Time		Received by: (Signature)				Date		Time					
Relinquished by: (Signature)				Date		Time		Received by: (Signature)				Date		Time					
Relinquished by: (Signature)				Date		Time		Received by: (Signature)				Date		Time					
Sample Matrix: S - Soil, Sd - Solid, Sg - Sludge, A - Aqueous, O - Other										Container Type: g - glass, p - poly/plastic, ag - amber glass, v - VOA									
Note: Samples are discarded 14 days after results are reported unless other arrangements are made. Hazardous samples will be returned to client or disposed of at the client expense. The report for the analysis of the above samples is applicable only to those samples received by the laboratory with this COC. The liability of the laboratory is limited to the amount paid for on the report.																			



Client Information					Invoice Information			Lab Use Only				TAT				State											
Client: <u>Hilcorp</u>					Company: _____			Lab WO# <u>FS11221</u>		Job Number <u>17051-0007</u>		1D		2D		3D		Std		NM		CO		UT		TX	
Project Name: <u>Davis Gas (om) A</u>					Address: _____			<input checked="" type="checkbox"/>		<input type="checkbox"/>		<input type="checkbox"/>		<input type="checkbox"/>		<input checked="" type="checkbox"/>		<input type="checkbox"/>		<input type="checkbox"/>		<input type="checkbox"/>		<input type="checkbox"/>			
Project Manager: <u>Kate Kaufman</u>					City, State, Zip: _____			<input type="checkbox"/>		<input type="checkbox"/>		<input type="checkbox"/>		<input type="checkbox"/>		<input type="checkbox"/>		<input type="checkbox"/>		<input type="checkbox"/>		<input type="checkbox"/>		<input type="checkbox"/>			
Address: _____					Phone: _____			<input type="checkbox"/>		<input type="checkbox"/>		<input type="checkbox"/>		<input type="checkbox"/>		<input type="checkbox"/>		<input type="checkbox"/>		<input type="checkbox"/>		<input type="checkbox"/>		<input type="checkbox"/>			
City, State, Zip: _____					Email: _____			<input type="checkbox"/>		<input type="checkbox"/>		<input type="checkbox"/>		<input type="checkbox"/>		<input type="checkbox"/>		<input type="checkbox"/>		<input type="checkbox"/>		<input type="checkbox"/>		<input type="checkbox"/>			
Phone: _____					Miscellaneous: _____			<input type="checkbox"/>		<input type="checkbox"/>		<input type="checkbox"/>		<input type="checkbox"/>		<input type="checkbox"/>		<input type="checkbox"/>		<input type="checkbox"/>		<input type="checkbox"/>		<input type="checkbox"/>			
Email: <u>kkaufman@hilcorp.com</u>								<input type="checkbox"/>		<input type="checkbox"/>		<input type="checkbox"/>		<input type="checkbox"/>		<input type="checkbox"/>		<input type="checkbox"/>		<input type="checkbox"/>		<input type="checkbox"/>		<input type="checkbox"/>			
Sample Information										Analysis and Method										EPA Program							
Time Sampled	Date Sampled	Matrix	No. of Containers	Sample ID	Field Filter	Lab Number	DRO/DRO by 8015	GRO/DRO by 8015	BTEX by 8021	VOC by 8260	Chloride 300.0	BGDOC - NM	TCEQ 1005 - TX	RCRA 8 Metals	SDWA	CWA	RCRA	Compliance	Y	or	N	PWSID #	Remarks				
1435	11/14/25	SOIL	1-4oz	FS01@1'		1	X	X	X	X													3.6				
1500				FS02@3'		2	X	X	X	X													3.4				
1503				FS03@3'		3	X	X	X	X													4.2				
1505				FS04@3'		4	X	X	X	X													4.5				
1507				FS05@3'		5	X	X	X	X													4.0				
1509				FS06@3'		6	X	X	X	X													3.6				
1511				FS07@3'		7	X	X	X	X													3.8				
1437				SW01@0-1'		8	X	X	X	X													4.2				
1513				SW02@0-3'		9	X	X	X	X													4.0				
1515				SW03@0-3'		10	X	X	X	X													4.0				
Additional Instructions: <u>Please cc shydee@solum.com, tdembrowski@solum.com</u>																											
I, (field sampler), attest to the validity and authenticity of this sample. I am aware that tampering with or intentionally mislabeling the sample location, date or time of collection is considered fraud and may be grounds for legal action.																											
Sampled by: <u>Tracy Dembrowski</u>																											
Relinquished by: (Signature) <u>[Signature]</u>					Date <u>11/14/25</u>		Time <u>1620</u>		Received by: (Signature) <u>Cathy Mann</u>					Date <u>11-14-25</u>		Time <u>1620</u>		Samples requiring thermal preservation must be received on ice the day they are sampled or received packed in ice at an avg temp above 0 but less than 6 °C on subsequent days.									
Relinquished by: (Signature)					Date		Time		Received by: (Signature)					Date		Time		Lab Use Only Received on ice: <input checked="" type="radio"/> Y <input type="radio"/> N									
Relinquished by: (Signature)					Date		Time		Received by: (Signature)					Date		Time		T1 _____ T2 _____ T3 _____									
Relinquished by: (Signature)					Date		Time		Received by: (Signature)					Date		Time		AVG Temp °C _____									
Sample Matrix: S - Soil, Sd - Solid, Sg - Sludge, A - Aqueous, O - Other _____										Container Type: g - glass, p - poly/plastic, ag - amber glass, v - VOA _____																	
Note: Samples are discarded 14 days after results are reported unless other arrangements are made. Hazardous samples will be returned to client or disposed of at the client expense. The report for the analysis of the above samples is applicable only to those samples received by the laboratory with this COC. The liability of the laboratory is limited to the amount paid for on the report.																											





### Envirotech Analytical Laboratory

Printed: 11/17/2025 9:04:24AM

#### Sample Receipt Checklist (SRC)

Instructions: Please take note of any NO checkmarks.

If we receive no response concerning these items within 24 hours of the date of this notice, all the samples will be analyzed as requested.

Client: Hilcorp Energy Co	Date Received: 11/14/25 16:20	Work Order ID: E511221
Phone: 505-599-3400	Date Logged In: 11/17/25 09:02	Logged In By: Caitlin Mars
Email: kkaufman@hilcorp.com	Due Date: 11/21/25 17:00 (5 day TAT)	

#### Chain of Custody (COC)

- 1. Does the sample ID match the COC? Yes
- 2. Does the number of samples per sampling site location match the COC? Yes
- 3. Were samples dropped off by client or carrier? Yes
- 4. Was the COC complete, i.e., signatures, dates/times, requested analyses? Yes
- 5. Were all samples received within holding time? Yes

Carrier: Tracey D.

Note: Analysis, such as pH which should be conducted in the field, i.e, 15 minute hold time, are not included in this discussion.

#### Sample Turn Around Time (TAT)

- 6. Did the COC indicate standard TAT, or Expedited TAT? Yes

#### Sample Cooler

- 7. Was a sample cooler received? Yes
- 8. If yes, was cooler received in good condition? Yes
- 9. Was the sample(s) received intact, i.e., not broken? Yes
- 10. Were custody/security seals present? No
- 11. If yes, were custody/security seals intact? NA
- 12. Was the sample received on ice? Yes

Note: Thermal preservation is not required, if samples are received within 15 minutes of sampling

- 13. See COC for individual sample temps. Samples outside of 0°C-6°C will be recorded in comments.

#### Sample Container

- 14. Are aqueous VOC samples present? No
- 15. Are VOC samples collected in VOA Vials? NA
- 16. Is the head space less than 6-8 mm (pea sized or less)? NA
- 17. Was a trip blank (TB) included for VOC analyses? NA
- 18. Are non-VOC samples collected in the correct containers? Yes
- 19. Is the appropriate volume/weight or number of sample containers collected? Yes

#### Field Label

- 20. Were field sample labels filled out with the minimum information:
  - Sample ID? Yes
  - Date/Time Collected? Yes
  - Collectors name? Yes

#### Sample Preservation

- 21. Does the COC or field labels indicate the samples were preserved? No
- 22. Are sample(s) correctly preserved? NA
- 24. Is lab filtration required and/or requested for dissolved metals? No

#### Multiphase Sample Matrix

- 26. Does the sample have more than one phase, i.e., multiphase? No
- 27. If yes, does the COC specify which phase(s) is to be analyzed? NA

#### Subcontract Laboratory

- 28. Are samples required to get sent to a subcontract laboratory? No
- 29. Was a subcontract laboratory specified by the client and if so who? NA Subcontract Lab: NA

#### Client Instruction

#### Comments/Resolution

Signature of client authorizing changes to the COC or sample disposition.

Date



envirotech Inc.

Report to:  
Kate Kaufman



# envirotech

*Practical Solutions for a Better Tomorrow*

## Analytical Report

Hilcorp Energy Co

Project Name: Davis Gas Com F 1R

Work Order: E512054

Job Number: 17051-0002

Received: 12/5/2025

Revision: 1

Report Reviewed By:

Walter Hinchman  
Laboratory Director  
12/9/25

5796 U.S. Hwy 64  
Farmington, NM 87401

Phone: (505) 632-1881  
Envirotech-inc.com



Envirotech Inc. certifies the test results meet all requirements of TNI unless noted otherwise.  
Statement of Data Authenticity: Envirotech Inc, attests the data reported has not been altered in any way.  
Partial or incomplete reproduction of this report is prohibited, unless approved by Envirotech Inc.  
Envirotech Inc, holds the Utah TNI certification NM00979 for data reported.  
Envirotech Inc, holds the Texas TNI certification T104704557 for data reported.



Date Reported: 12/9/25

Kate Kaufman  
PO Box 61529  
Houston, TX 77208

Project Name: Davis Gas Com F 1R  
Workorder: E512054  
Date Received: 12/5/2025 12:43:00PM

Kate Kaufman,

Thank you for choosing Envirotech, Inc. as your analytical testing laboratory for the sample(s) received on, 12/5/2025 12:43:00PM, under the Project Name: Davis Gas Com F 1R.

The analytical test results summarized in this report with the Project Name: Davis Gas Com F 1R apply to the individual samples collected, identified and submitted bearing the project name on the enclosed chain-of-custody. Subcontracted sample analyses not conducted by Envirotech, Inc., are attached in full as issued by the subcontract laboratory.

Please review the Chain-of-Custody (COC) and Sample Receipt Checklist (SRC) for any issues regarding sample receipt temperature, containers, preservation etc. To best understand your test results, review the entire report summarizing your sample data and the associated quality control batch data.

All reported data in this analytical report were analyzed according to the referenced method(s) and are in compliance with the latest NELAC/TNI standards, unless otherwise noted. Samples or analytical quality control parameters not meeting specific QC criteria are qualified with a data flag. Data flag definitions are located in the Notes and Definitions section of this analytical report.

If you have any questions concerning this report, please feel free to contact Envirotech, Inc.

Respectfully,

**Walter Hinchman**  
Laboratory Director  
Office: 505-632-1881  
Cell: 775-287-1762  
[whinchman@envirotech-inc.com](mailto:whinchman@envirotech-inc.com)

**Raina Schwanz**  
Laboratory Administrator  
Office: 505-632-1881  
[rainaschwanz@envirotech-inc.com](mailto:rainaschwanz@envirotech-inc.com)

Field Offices:

**Southern New Mexico Area**

**Lynn Jarboe**  
Laboratory Technical Representative  
Office: 505-421-LABS(5227)  
Cell: 505-320-4759  
[ljjarboe@envirotech-inc.com](mailto:ljjarboe@envirotech-inc.com)

**Michelle Gonzales**  
Client Representative  
Office: 505-421-LABS(5227)  
Cell: 505-947-8222  
[mgonzales@envirotech-inc.com](mailto:mgonzales@envirotech-inc.com)

Envirotech Web Address: [www.envirotech-inc.com](http://www.envirotech-inc.com)

## Table of Contents

Title Page	1
Cover Page	2
Table of Contents	3
Sample Summary	4
Sample Data	5
SW06 @ 0-2'	5
QC Summary Data	6
QC - Volatile Organics by EPA 8021B	6
QC - Nonhalogenated Organics by EPA 8015D - GRO	7
QC - Nonhalogenated Organics by EPA 8015D - DRO/ORO	8
QC - Anions by EPA 300.0/9056A	9
Definitions and Notes	10
Chain of Custody etc.	11

### Sample Summary

Hilcorp Energy Co PO Box 61529 Houston TX, 77208	Project Name: Davis Gas Com F 1R Project Number: 17051-0002 Project Manager: Kate Kaufman	<b>Reported:</b> 12/09/25 12:15
--	---	------------------------------------

Client Sample ID	Lab Sample ID	Matrix	Sampled	Received	Container
SW06 @ 0-2'	E512054-01A	Soil	12/05/25	12/05/25	Glass Jar, 2 oz.



### Sample Data

Hilcorp Energy Co PO Box 61529 Houston TX, 77208	Project Name: Davis Gas Com F 1R Project Number: 17051-0002 Project Manager: Kate Kaufman	<b>Reported:</b> 12/9/2025 12:15:03PM
--	---	--

**SW06 @ 0-2'**

**E512054-01**

Analyte	Result	Reporting Limit	Dilution	Prepared	Analyzed	Notes
<b>Volatile Organics by EPA 8021B</b>	mg/kg	mg/kg		Analyst: SL		Batch: 2549104
Benzene	ND	0.0250	1	12/05/25	12/08/25	
Ethylbenzene	ND	0.0250	1	12/05/25	12/08/25	
Toluene	ND	0.0250	1	12/05/25	12/08/25	
o-Xylene	ND	0.0250	1	12/05/25	12/08/25	
p,m-Xylene	ND	0.0500	1	12/05/25	12/08/25	
Total Xylenes	ND	0.0250	1	12/05/25	12/08/25	
<i>Surrogate: 4-Bromochlorobenzene-PID</i>		93.6 %	70-130	12/05/25	12/08/25	
<b>Nonhalogenated Organics by EPA 8015D - GRO</b>	mg/kg	mg/kg		Analyst: SL		Batch: 2549104
Gasoline Range Organics (C6-C10)	ND	20.0	1	12/05/25	12/08/25	
<i>Surrogate: 1-Chloro-4-fluorobenzene-FID</i>		114 %	70-130	12/05/25	12/08/25	
<b>Nonhalogenated Organics by EPA 8015D - DRO/ORO</b>	mg/kg	mg/kg		Analyst: HM		Batch: 2550006
Diesel Range Organics (C10-C28)	ND	25.0	1	12/08/25	12/08/25	
Oil Range Organics (C28-C36)	ND	50.0	1	12/08/25	12/08/25	
<i>Surrogate: n-Nonane</i>		99.1 %	61-141	12/08/25	12/08/25	
<b>Anions by EPA 300.0/9056A</b>	mg/kg	mg/kg		Analyst: TP		Batch: 2549114
Chloride	68.2	20.0	1	12/05/25	12/06/25	



### QC Summary Data

Hilcorp Energy Co PO Box 61529 Houston TX, 77208	Project Name: Davis Gas Com F 1R Project Number: 17051-0002 Project Manager: Kate Kaufman	<b>Reported:</b> 12/9/2025 12:15:03PM
--	---	--

#### Volatile Organics by EPA 8021B

Analyst: SL

Analyte	Result mg/kg	Reporting Limit mg/kg	Spike Level mg/kg	Source Result mg/kg	Rec % %	Rec Limits %	RPD %	RPD Limit %	Notes
---------	-----------------	-----------------------------	-------------------------	---------------------------	---------------	--------------------	----------	-------------------	-------

**Blank (2549104-BLK1)**

Prepared: 12/05/25 Analyzed: 12/08/25

Benzene	ND	0.0250							
Ethylbenzene	ND	0.0250							
Toluene	ND	0.0250							
o-Xylene	ND	0.0250							
p,m-Xylene	ND	0.0500							
Total Xylenes	ND	0.0250							
Surrogate: 4-Bromochlorobenzene-PID	7.19		8.00		89.8	70-130			

**LCS (2549104-BS1)**

Prepared: 12/05/25 Analyzed: 12/08/25

Benzene	4.68	0.0250	5.00		93.6	70-130			
Ethylbenzene	4.46	0.0250	5.00		89.2	70-130			
Toluene	4.62	0.0250	5.00		92.4	70-130			
o-Xylene	4.49	0.0250	5.00		89.8	70-130			
p,m-Xylene	9.12	0.0500	10.0		91.2	70-130			
Total Xylenes	13.6	0.0250	15.0		90.7	70-130			
Surrogate: 4-Bromochlorobenzene-PID	7.84		8.00		98.0	70-130			

**Matrix Spike (2549104-MS1)**

Source: E512045-04

Prepared: 12/05/25 Analyzed: 12/08/25

Benzene	5.00	0.0250	5.00	ND	100	70-130			
Ethylbenzene	4.74	0.0250	5.00	ND	94.7	70-130			
Toluene	4.92	0.0250	5.00	ND	98.4	70-130			
o-Xylene	4.78	0.0250	5.00	ND	95.7	70-130			
p,m-Xylene	9.68	0.0500	10.0	ND	96.8	70-130			
Total Xylenes	14.5	0.0250	15.0	ND	96.4	70-130			
Surrogate: 4-Bromochlorobenzene-PID	7.92		8.00		99.0	70-130			

**Matrix Spike Dup (2549104-MSD1)**

Source: E512045-04

Prepared: 12/05/25 Analyzed: 12/08/25

Benzene	4.80	0.0250	5.00	ND	95.9	70-130	4.22	27	
Ethylbenzene	4.57	0.0250	5.00	ND	91.3	70-130	3.66	26	
Toluene	4.73	0.0250	5.00	ND	94.7	70-130	3.89	20	
o-Xylene	4.61	0.0250	5.00	ND	92.1	70-130	3.79	25	
p,m-Xylene	9.34	0.0500	10.0	ND	93.4	70-130	3.63	23	
Total Xylenes	13.9	0.0250	15.0	ND	93.0	70-130	3.68	26	
Surrogate: 4-Bromochlorobenzene-PID	7.89		8.00		98.6	70-130			



### QC Summary Data

Hilcorp Energy Co PO Box 61529 Houston TX, 77208	Project Name: Davis Gas Com F 1R Project Number: 17051-0002 Project Manager: Kate Kaufman	<b>Reported:</b> 12/9/2025 12:15:03PM
--	---	--

#### Nonhalogenated Organics by EPA 8015D - GRO

Analyst: SL

Analyte	Result mg/kg	Reporting Limit mg/kg	Spike Level mg/kg	Source Result mg/kg	Rec %	Rec Limits %	RPD %	RPD Limit %	Notes
---------	-----------------	-----------------------------	-------------------------	---------------------------	----------	--------------------	----------	-------------------	-------

**Blank (2549104-BLK1)**

Prepared: 12/05/25 Analyzed: 12/08/25

Gasoline Range Organics (C6-C10)	ND	20.0							
Surrogate: 1-Chloro-4-fluorobenzene-FID	9.19		8.00		115	70-130			

**LCS (2549104-BS2)**

Prepared: 12/05/25 Analyzed: 12/08/25

Gasoline Range Organics (C6-C10)	49.3	20.0	50.0		98.7	70-130			
Surrogate: 1-Chloro-4-fluorobenzene-FID	9.09		8.00		114	70-130			

**Matrix Spike (2549104-MS2)**

Source: E512045-04

Prepared: 12/05/25 Analyzed: 12/08/25

Gasoline Range Organics (C6-C10)	50.0	20.0	50.0	ND	100	70-130			
Surrogate: 1-Chloro-4-fluorobenzene-FID	9.09		8.00		114	70-130			

**Matrix Spike Dup (2549104-MSD2)**

Source: E512045-04

Prepared: 12/05/25 Analyzed: 12/08/25

Gasoline Range Organics (C6-C10)	51.8	20.0	50.0	ND	104	70-130	3.46	20	
Surrogate: 1-Chloro-4-fluorobenzene-FID	8.93		8.00		112	70-130			



### QC Summary Data

Hilcorp Energy Co PO Box 61529 Houston TX, 77208	Project Name: Davis Gas Com F 1R Project Number: 17051-0002 Project Manager: Kate Kaufman	<b>Reported:</b> 12/9/2025 12:15:03PM
--	---	--

#### Nonhalogenated Organics by EPA 8015D - DRO/ORO

Analyst: HM

Analyte	Result mg/kg	Reporting Limit mg/kg	Spike Level mg/kg	Source Result mg/kg	Rec %	Rec Limits %	RPD %	RPD Limit %	Notes
---------	-----------------	-----------------------------	-------------------------	---------------------------	----------	--------------------	----------	-------------------	-------

**Blank (2550006-BLK1)**

Prepared: 12/08/25 Analyzed: 12/08/25

Diesel Range Organics (C10-C28)	ND	25.0							
Oil Range Organics (C28-C36)	ND	50.0							
Surrogate: <i>n</i> -Nonane	58.6		50.0		117	61-141			

**LCS (2550006-BS1)**

Prepared: 12/08/25 Analyzed: 12/08/25

Diesel Range Organics (C10-C28)	250	25.0	250		99.8	66-144			
Surrogate: <i>n</i> -Nonane	46.8		50.0		93.6	61-141			

**Matrix Spike (2550006-MS1)**

Source: E512051-50

Prepared: 12/08/25 Analyzed: 12/08/25

Diesel Range Organics (C10-C28)	274	25.0	250	ND	110	56-156			
Surrogate: <i>n</i> -Nonane	47.9		50.0		95.8	61-141			

**Matrix Spike Dup (2550006-MSD1)**

Source: E512051-50

Prepared: 12/08/25 Analyzed: 12/08/25

Diesel Range Organics (C10-C28)	279	25.0	250	ND	111	56-156	1.51	20	
Surrogate: <i>n</i> -Nonane	48.6		50.0		97.2	61-141			



### QC Summary Data

Hilcorp Energy Co PO Box 61529 Houston TX, 77208	Project Name: Davis Gas Com F 1R Project Number: 17051-0002 Project Manager: Kate Kaufman	<b>Reported:</b> 12/9/2025 12:15:03PM
--	---	--

#### Anions by EPA 300.0/9056A

Analyst: TP

Analyte	Result mg/kg	Reporting Limit mg/kg	Spike Level mg/kg	Source Result mg/kg	Rec %	Rec Limits %	RPD %	RPD Limit %	Notes
---------	-----------------	-----------------------------	-------------------------	---------------------------	----------	--------------------	----------	-------------------	-------

**Blank (2549114-BLK1)**

Prepared: 12/05/25 Analyzed: 12/05/25

Chloride ND 20.0

**LCS (2549114-BS1)**

Prepared: 12/05/25 Analyzed: 12/05/25

Chloride 252 20.0 250 101 90-110

**Matrix Spike (2549114-MS1)**

Source: E512053-02

Prepared: 12/05/25 Analyzed: 12/05/25

Chloride 251 20.0 250 ND 100 80-120

**Matrix Spike Dup (2549114-MSD1)**

Source: E512053-02

Prepared: 12/05/25 Analyzed: 12/05/25

Chloride 250 20.0 250 ND 99.9 80-120 0.368 20

QC Summary Report Comment:

Calculations are based off of the raw (non-rounded) data. However, for reporting purposes all QC data is rounded to three significant figures. Therefore, hand calculated values may differ slightly.



### Definitions and Notes

Hilcorp Energy Co	Project Name:	Davis Gas Com F 1R	
PO Box 61529	Project Number:	17051-0002	<b>Reported:</b>
Houston TX, 77208	Project Manager:	Kate Kaufman	12/09/25 12:15

ND Analyte NOT DETECTED at or above the reporting limit

NR Not Reported

RPD Relative Percent Difference

DNI Did Not Ignite

DNR Did not react with the addition of acid or base.

Note (1): Methods marked with \*\* are non-accredited methods.

Note (2): Soil data is reported on an "as received" weight basis, unless reported otherwise.





Envirotech Analytical Laboratory

Printed: 12/5/2025 12:48:17PM

Sample Receipt Checklist (SRC)

Instructions: Please take note of any NO checkmarks.

If we receive no response concerning these items within 24 hours of the date of this notice, all the samples will be analyzed as requested.

Client: Hilcorp Energy Co Date Received: 12/05/25 12:43 Work Order ID: E512054
Phone: 505-599-3400 Date Logged In: 12/05/25 12:45 Logged In By: Caitlin Mars
Email: kkaufman@hilcorp.com Due Date: 12/08/25 17:00 (1 day TAT)

Chain of Custody (COC)

- 1. Does the sample ID match the COC? Yes
2. Does the number of samples per sampling site location match the COC? Yes
3. Were samples dropped off by client or carrier? Yes
4. Was the COC complete, i.e., signatures, dates/times, requested analyses? Yes
5. Were all samples received within holding time? Yes

Carrier: Osgood Froelich

Note: Analysis, such as pH which should be conducted in the field, i.e, 15 minute hold time, are not included in this discussion.

Sample Turn Around Time (TAT)

- 6. Did the COC indicate standard TAT, or Expedited TAT? Yes

Sample Cooler

- 7. Was a sample cooler received? Yes
8. If yes, was cooler received in good condition? Yes
9. Was the sample(s) received intact, i.e., not broken? Yes
10. Were custody/security seals present? No
11. If yes, were custody/security seals intact? NA
12. Was the sample received on ice? Yes

Note: Thermal preservation is not required, if samples are received within 15 minutes of sampling

- 13. See COC for individual sample temps. Samples outside of 0°C-6°C will be recorded in comments.

Sample Container

- 14. Are aqueous VOC samples present? No
15. Are VOC samples collected in VOA Vials? NA
16. Is the head space less than 6-8 mm (pea sized or less)? NA
17. Was a trip blank (TB) included for VOC analyses? NA
18. Are non-VOC samples collected in the correct containers? Yes
19. Is the appropriate volume/weight or number of sample containers collected? Yes

Field Label

- 20. Were field sample labels filled out with the minimum information:
Sample ID? Yes
Date/Time Collected? Yes
Collectors name? Yes

Sample Preservation

- 21. Does the COC or field labels indicate the samples were preserved? No
22. Are sample(s) correctly preserved? NA
24. Is lab filtration required and/or requested for dissolved metals? No

Multiphase Sample Matrix

- 26. Does the sample have more than one phase, i.e., multiphase? No
27. If yes, does the COC specify which phase(s) is to be analyzed? NA

Subcontract Laboratory

- 28. Are samples required to get sent to a subcontract laboratory? No
29. Was a subcontract laboratory specified by the client and if so who? NA Subcontract Lab: NA

Client Instruction

Empty box for client instruction.

Comments/Resolution

Large empty box for comments/resolution.

Signature of client authorizing changes to the COC or sample disposition.

Date



envirotech Inc.



## APPENDIX C

### Photographic Log

---



**Photographic Log**  
Hilcorp Energy Co.  
Davis Gas Com F 1R  
San Juan County, NM



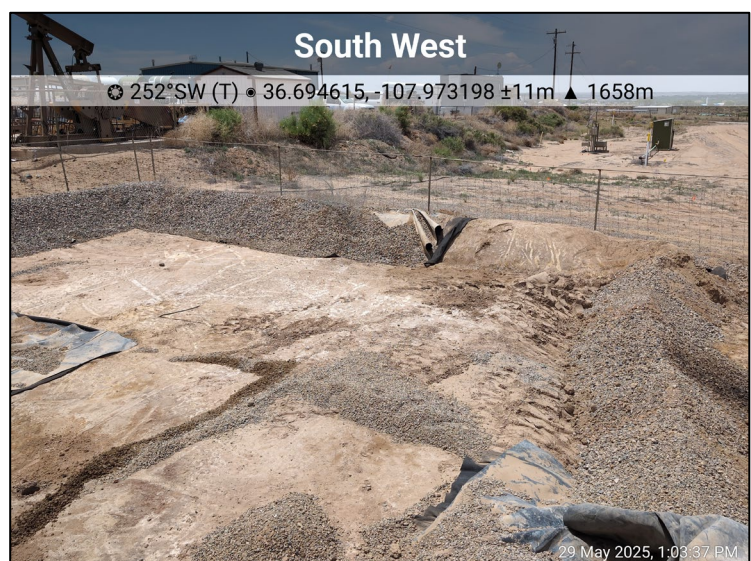
Photograph: 1 Date: 05/29/2025  
Description: Soil staining in release footprint  
View: Northwest



Photograph: 2 Date: 05/29/2025  
Description: Release point and soil staining  
View: East



Photograph: 3 Date: 05/29/2025  
Description: Soil staining at release point  
View: South



Photograph: 4 Date: 5/29/2025  
Description: Release extent  
View: Southwest



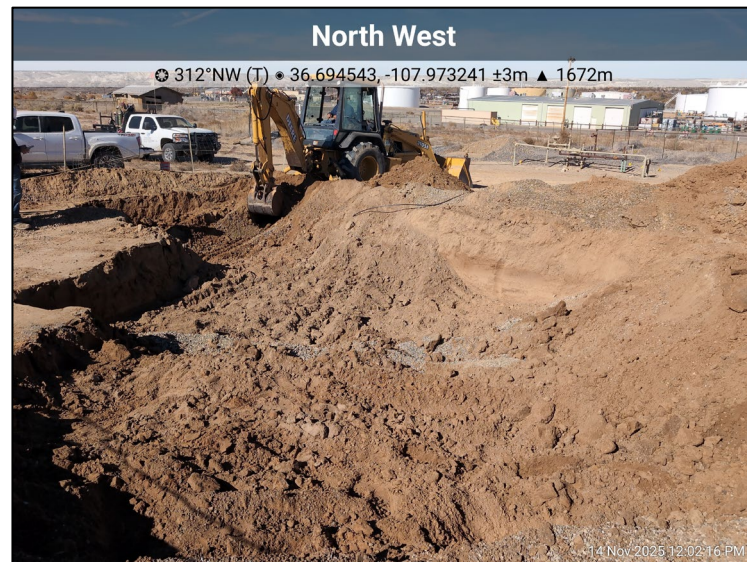
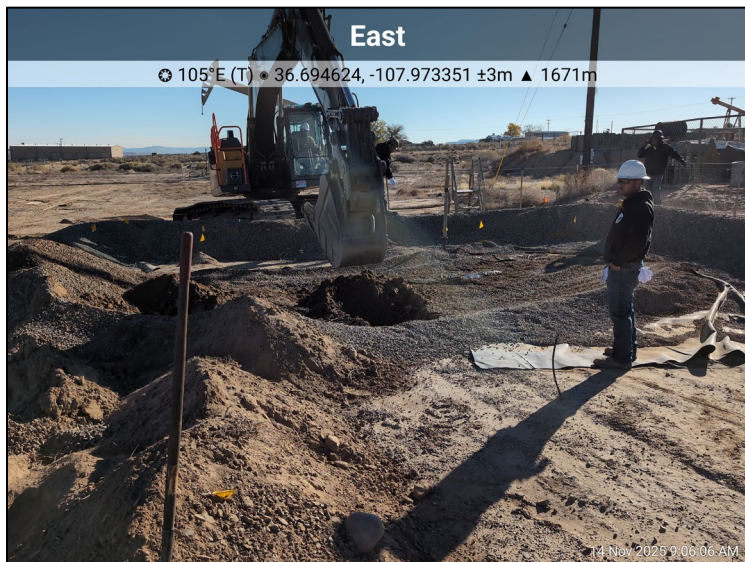


**Photographic Log**  
Hilcorp Energy Co.  
Davis Gas Com F 1R  
San Juan County, NM



Photograph: 9 Date: 11/14/2025  
Description: Release footprint under AST prior to excavation  
View: South

Photograph: 10 Date: 11/14/2025  
Description: Release footprint prior to excavation  
View: West

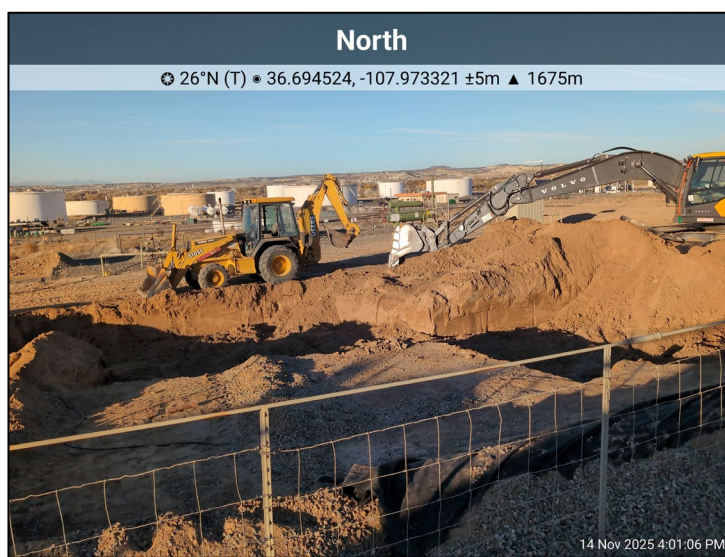
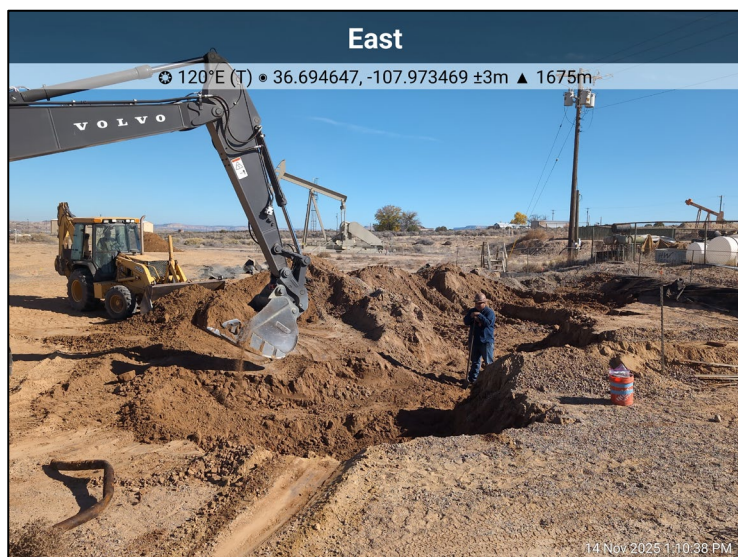


Photograph: 11 Date: 11/14/2025  
Description: Beginning of excavation  
View: East

Photograph: 12 Date: 11/14/2025  
Description: Excavation  
View: Northwest



**Photographic Log**  
Hilcorp Energy Co.  
Davis Gas Com F 1R  
San Juan County, NM



Photograph: 13  
Description: Excavation

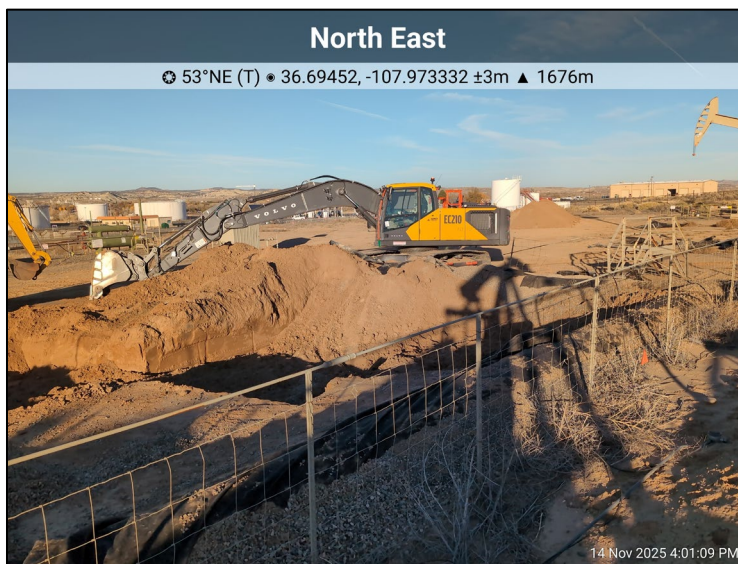
Date: 11/14/2025

View: East

Photograph: 14  
Description: Excavation extent

Date: 11/14/2025

View: North



Photograph: 15  
Description: Excavation extent

Date: 11/14/2025

View: Northeast

Photograph: 16  
Description: Excavation extent

Date: 11/14/2025

View: West



**Photographic Log**  
Hilcorp Energy Co.  
Davis Gas Com F 1R  
San Juan County, NM



Photograph: 17  
Description: Final excavation  
View: Southwest

Date: 12/05/2025



Photograph: 18  
Description: Final excavation extent  
View: Northwest

Date: 12/05/2025



Photograph: 19  
Description: Final excavation extent  
View: West

Date: 12/05/2025



Photograph: 20  
Description: Final excavation extent  
View: Southeast

Date: 12/05/2025

Sante Fe Main Office  
Phone: (505) 476-3441

General Information  
Phone: (505) 629-6116

Online Phone Directory  
<https://www.emnrd.nm.gov/ocd/contact-us>

**State of New Mexico**  
**Energy, Minerals and Natural Resources**  
**Oil Conservation Division**  
**1220 S. St Francis Dr.**  
**Santa Fe, NM 87505**

QUESTIONS

Action 543597

**QUESTIONS**

Operator: HILCORP ENERGY COMPANY 1111 Travis Street Houston, TX 77002	OGRID: 372171
	Action Number: 543597
	Action Type: [C-141] Remediation Closure Request C-141 (C-141-v-Closure)

**QUESTIONS**

<b>Prerequisites</b>	
Incident ID (n#)	nAPP2514234133
Incident Name	NAPP2514234133 DAVIS GAS COM F #1R @ 30-045-30833
Incident Type	Release Other
Incident Status	Remediation Closure Report Received
Incident Well	[30-045-30833] DAVIS GAS COM F #001R

<b>Location of Release Source</b>	
<i>Please answer all the questions in this group.</i>	
Site Name	DAVIS GAS COM F #1R
Date Release Discovered	05/21/2025
Surface Owner	Private

<b>Incident Details</b>	
<i>Please answer all the questions in this group.</i>	
Incident Type	Release Other
Did this release result in a fire or is the result of a fire	No
Did this release result in any injuries	No
Has this release reached or does it have a reasonable probability of reaching a watercourse	No
Has this release endangered or does it have a reasonable probability of endangering public health	No
Has this release substantially damaged or will it substantially damage property or the environment	No
Is this release of a volume that is or may with reasonable probability be detrimental to fresh water	No

<b>Nature and Volume of Release</b>	
<i>Material(s) released, please answer all that apply below. Any calculations or specific justifications for the volumes provided should be attached to the follow-up C-141 submission.</i>	
Crude Oil Released (bbls) Details	Not answered.
Produced Water Released (bbls) Details	Cause: Corrosion   Valve   Produced Water   Released: 38 BBL   Recovered: 0 BBL   Lost: 38 BBL.
Is the concentration of chloride in the produced water >10,000 mg/l	No
Condensate Released (bbls) Details	Cause: Corrosion   Valve   Condensate   Released: 38 BBL   Recovered: 0 BBL   Lost: 38 BBL.
Natural Gas Vented (Mcf) Details	Not answered.
Natural Gas Flared (Mcf) Details	Not answered.
Other Released Details	Not answered.
Are there additional details for the questions above (i.e. any answer containing Other, Specify, Unknown, and/or Fire, or any negative lost amounts)	Not answered.

Sante Fe Main Office  
Phone: (505) 476-3441

General Information  
Phone: (505) 629-6116

Online Phone Directory  
<https://www.emnrd.nm.gov/ocd/contact-us>

**State of New Mexico**  
**Energy, Minerals and Natural Resources**  
**Oil Conservation Division**  
**1220 S. St Francis Dr.**  
**Santa Fe, NM 87505**

QUESTIONS, Page 2

Action 543597

**QUESTIONS (continued)**

Operator: HILCORP ENERGY COMPANY 1111 Travis Street Houston, TX 77002	OGRID: 372171
	Action Number: 543597
	Action Type: [C-141] Remediation Closure Request C-141 (C-141-v-Closure)

**QUESTIONS**

<b>Nature and Volume of Release (continued)</b>	
Is this a gas only submission (i.e. only significant Mcf values reported)	<b>No, according to supplied volumes this does not appear to be a "gas only" report.</b>
Was this a major release as defined by Subsection A of 19.15.29.7 NMAC	<b>Yes</b>
Reasons why this would be considered a submission for a notification of a major release	<b>From paragraph A. "Major release" determine using: (1) an unauthorized release of a volume, excluding gases, of 25 barrels or more.</b>
<i>With the implementation of the 19.15.27 NMAC (05/25/2021), venting and/or flaring of natural gas (i.e. gas only) are to be submitted on the C-129 form.</i>	

**Initial Response**

*The responsible party must undertake the following actions immediately unless they could create a safety hazard that would result in injury.*

The source of the release has been stopped	True
The impacted area has been secured to protect human health and the environment	True
Released materials have been contained via the use of berms or dikes, absorbent pads, or other containment devices	True
All free liquids and recoverable materials have been removed and managed appropriately	True
If all the actions described above have not been undertaken, explain why	Not answered.

*Per Paragraph (4) of Subsection B of 19.15.29.8 NMAC the responsible party may commence remediation immediately after discovery of a release. If remediation has begun, please prepare and attach a narrative of actions to date in the follow-up C-141 submission. If remedial efforts have been successfully completed or if the release occurred within a lined containment area (see Subparagraph (a) of Paragraph (5) of Subsection A of 19.15.29.11 NMAC), please prepare and attach all information needed for closure evaluation in the follow-up C-141 submission.*

I hereby certify that the information given above is true and complete to the best of my knowledge and understand that pursuant to OCD rules and regulations all operators are required to report and/or file certain release notifications and perform corrective actions for releases which may endanger public health or the environment. The acceptance of a C-141 report by the OCD does not relieve the operator of liability should their operations have failed to adequately investigate and remediate contamination that pose a threat to groundwater, surface water, human health or the environment. In addition, OCD acceptance of a C-141 report does not relieve the operator of responsibility for compliance with any other federal, state, or local laws and/or regulations.

I hereby agree and sign off to the above statement	Name: Stuart Hyde Title: Senior Geologist Email: shyde@ensolum.com Date: 01/15/2026
--	--

Sante Fe Main Office  
Phone: (505) 476-3441

General Information  
Phone: (505) 629-6116

Online Phone Directory  
<https://www.emnrd.nm.gov/ocd/contact-us>

**State of New Mexico**  
**Energy, Minerals and Natural Resources**  
**Oil Conservation Division**  
**1220 S. St Francis Dr.**  
**Santa Fe, NM 87505**

QUESTIONS, Page 3

Action 543597

**QUESTIONS (continued)**

Operator: HILCORP ENERGY COMPANY 1111 Travis Street Houston, TX 77002	OGRID: 372171
	Action Number: 543597
	Action Type: [C-141] Remediation Closure Request C-141 (C-141-v-Closure)

**QUESTIONS**

**Site Characterization**  
*Please answer all the questions in this group (only required when seeking remediation plan approval and beyond). This information must be provided to the appropriate district office no later than 90 days after the release discovery date.*

What is the shallowest depth to groundwater beneath the area affected by the release in feet below ground surface (ft bgs)	Between 26 and 50 (ft.)
What method was used to determine the depth to ground water	NM OSE iWaters Database Search
Did this release impact groundwater or surface water	No
<b>What is the minimum distance, between the closest lateral extents of the release and the following surface areas:</b>	
A continuously flowing watercourse or any other significant watercourse	Between 500 and 1000 (ft.)
Any lakebed, sinkhole, or playa lake (measured from the ordinary high-water mark)	Between 1000 (ft.) and ½ (mi.)
An occupied permanent residence, school, hospital, institution, or church	Between 300 and 500 (ft.)
A spring or a private domestic fresh water well used by less than five households for domestic or stock watering purposes	Between 300 and 500 (ft.)
Any other fresh water well or spring	Between 300 and 500 (ft.)
Incorporated municipal boundaries or a defined municipal fresh water well field	Between 1000 (ft.) and ½ (mi.)
A wetland	Between 500 and 1000 (ft.)
A subsurface mine	Greater than 5 (mi.)
An (non-karst) unstable area	Greater than 5 (mi.)
Categorize the risk of this well / site being in a karst geology	None
A 100-year floodplain	Between 1000 (ft.) and ½ (mi.)
Did the release impact areas not on an exploration, development, production, or storage site	No

**Remediation Plan**

*Please answer all the questions that apply or are indicated. This information must be provided to the appropriate district office no later than 90 days after the release discovery date.*

Requesting a remediation plan approval with this submission	Yes
<i>Attach a comprehensive report demonstrating the lateral and vertical extents of soil contamination associated with the release have been determined, pursuant to 19.15.29.11 NMAC and 19.15.29.13 NMAC.</i>	
Have the lateral and vertical extents of contamination been fully delineated	Yes
Was this release entirely contained within a lined containment area	No

**Soil Contamination Sampling:** (Provide the highest observable value for each, in milligrams per kilograms.)

Chloride (EPA 300.0 or SM4500 Cl B)	352
TPH (GRO+DRO+MRO) (EPA SW-846 Method 8015M)	3340
GRO+DRO (EPA SW-846 Method 8015M)	3126
BTEX (EPA SW-846 Method 8021B or 8260B)	88.4
Benzene (EPA SW-846 Method 8021B or 8260B)	0

*Per Subsection B of 19.15.29.11 NMAC unless the site characterization report includes completed efforts at remediation, the report must include a proposed remediation plan in accordance with 19.15.29.12 NMAC, which includes the anticipated timelines for beginning and completing the remediation.*

On what estimated date will the remediation commence	10/01/2025
On what date will (or did) the final sampling or liner inspection occur	10/01/2025
On what date will (or was) the remediation complete(d)	10/01/2025
What is the estimated surface area (in square feet) that will be reclaimed	0
What is the estimated volume (in cubic yards) that will be reclaimed	0
What is the estimated surface area (in square feet) that will be remediated	1350
What is the estimated volume (in cubic yards) that will be remediated	150

*These estimated dates and measurements are recognized to be the best guess or calculation at the time of submission and may (be) change(d) over time as more remediation efforts are completed.*

*The OCD recognizes that proposed remediation measures may have to be minimally adjusted in accordance with the physical realities encountered during remediation. If the responsible party has any need to significantly deviate from the remediation plan proposed, then it should consult with the division to determine if another remediation plan submission is required.*

Sante Fe Main Office  
Phone: (505) 476-3441

General Information  
Phone: (505) 629-6116

Online Phone Directory  
<https://www.emnrd.nm.gov/ocd/contact-us>

**State of New Mexico**  
**Energy, Minerals and Natural Resources**  
**Oil Conservation Division**  
**1220 S. St Francis Dr.**  
**Santa Fe, NM 87505**

QUESTIONS, Page 4

Action 543597

**QUESTIONS (continued)**

Operator: HILCORP ENERGY COMPANY 1111 Travis Street Houston, TX 77002	OGRID: 372171
	Action Number: 543597
	Action Type: [C-141] Remediation Closure Request C-141 (C-141-v-Closure)

**QUESTIONS**

**Remediation Plan (continued)**

Please answer all the questions that apply or are indicated. This information must be provided to the appropriate district office no later than 90 days after the release discovery date.

**This remediation will (or is expected to) utilize the following processes to remediate / reduce contaminants:**

(Select all answers below that apply.)

(Ex Situ) Excavation and <b>off-site</b> disposal (i.e. dig and haul, hydrovac, etc.)	Yes
Which OCD approved facility will be used for <b>off-site</b> disposal	fEEM0112336756 ENVIROTECH LANDFARM #2
<b>OR</b> which OCD approved well (API) will be used for <b>off-site</b> disposal	Not answered.
<b>OR</b> is the <b>off-site</b> disposal site, to be used, out-of-state	No
<b>OR</b> is the <b>off-site</b> disposal site, to be used, an NMED facility	No
(Ex Situ) Excavation and <b>on-site</b> remediation (i.e. On-Site Land Farms)	No
(In Situ) Soil Vapor Extraction	No
(In Situ) Chemical processing (i.e. Soil Shredding, Potassium Permanganate, etc.)	No
(In Situ) Biological processing (i.e. Microbes / Fertilizer, etc.)	No
(In Situ) Physical processing (i.e. Soil Washing, Gypsum, Disking, etc.)	No
Ground Water Abatement pursuant to 19.15.30 NMAC	No
OTHER (Non-listed remedial process)	No

Per Subsection B of 19.15.29.11 NMAC unless the site characterization report includes completed efforts at remediation, the report must include a proposed remediation plan in accordance with 19.15.29.12 NMAC, which includes the anticipated timelines for beginning and completing the remediation.

I hereby certify that the information given above is true and complete to the best of my knowledge and understand that pursuant to OCD rules and regulations all operators are required to report and/or file certain release notifications and perform corrective actions for releases which may endanger public health or the environment. The acceptance of a C-141 report by the OCD does not relieve the operator of liability should their operations have failed to adequately investigate and remediate contamination that pose a threat to groundwater, surface water, human health or the environment. In addition, OCD acceptance of a C-141 report does not relieve the operator of responsibility for compliance with any other federal, state, or local laws and/or regulations.

I hereby agree and sign off to the above statement	Name: Stuart Hyde Title: Senior Geologist Email: shyde@ensolum.com Date: 01/15/2026
--	--

The OCD recognizes that proposed remediation measures may have to be minimally adjusted in accordance with the physical realities encountered during remediation. If the responsible party has any need to significantly deviate from the remediation plan proposed, then it should consult with the division to determine if another remediation plan submission is required.

Sante Fe Main Office  
Phone: (505) 476-3441

General Information  
Phone: (505) 629-6116

Online Phone Directory  
<https://www.emnrd.nm.gov/ocd/contact-us>

**State of New Mexico**  
**Energy, Minerals and Natural Resources**  
**Oil Conservation Division**  
**1220 S. St Francis Dr.**  
**Santa Fe, NM 87505**

QUESTIONS, Page 5

Action 543597

**QUESTIONS (continued)**

Operator: HILCORP ENERGY COMPANY 1111 Travis Street Houston, TX 77002	OGRID: 372171
	Action Number: 543597
	Action Type: [C-141] Remediation Closure Request C-141 (C-141-v-Closure)

**QUESTIONS**

<b>Deferral Requests Only</b>	
<i>Only answer the questions in this group if seeking a deferral upon approval this submission. Each of the following items must be confirmed as part of any request for deferral of remediation.</i>	
Requesting a deferral of the remediation closure due date with the approval of this submission	No

Sante Fe Main Office  
Phone: (505) 476-3441

General Information  
Phone: (505) 629-6116

Online Phone Directory  
<https://www.emnrd.nm.gov/ocd/contact-us>

**State of New Mexico**  
**Energy, Minerals and Natural Resources**  
**Oil Conservation Division**  
**1220 S. St Francis Dr.**  
**Santa Fe, NM 87505**

QUESTIONS, Page 6

Action 543597

**QUESTIONS (continued)**

Operator: HILCORP ENERGY COMPANY 1111 Travis Street Houston, TX 77002	OGRID: 372171
	Action Number: 543597
	Action Type: [C-141] Remediation Closure Request C-141 (C-141-v-Closure)

**QUESTIONS**

<b>Sampling Event Information</b>	
Last sampling notification (C-141N) recorded	<b>531344</b>
Sampling date pursuant to Subparagraph (a) of Paragraph (1) of Subsection D of 19.15.29.12 NMAC	<b>12/05/2025</b>
What was the (estimated) number of samples that were to be gathered	<b>1</b>
What was the sampling surface area in square feet	<b>200</b>

<b>Remediation Closure Request</b>	
<i>Only answer the questions in this group if seeking remediation closure for this release because all remediation steps have been completed.</i>	
Requesting a remediation closure approval with this submission	Yes
Have the lateral and vertical extents of contamination been fully delineated	Yes
Was this release entirely contained within a lined containment area	No
All areas reasonably needed for production or subsequent drilling operations have been stabilized, returned to the sites existing grade, and have a soil cover that prevents ponding of water, minimizing dust and erosion	Yes
What was the total surface area (in square feet) remediated	1330
What was the total volume (cubic yards) remediated	131
All areas not reasonably needed for production or subsequent drilling operations have been reclaimed to contain a minimum of four feet of non-waste contain earthen material with concentrations less than 600 mg/kg chlorides, 100 mg/kg TPH, 50 mg/kg BTEX, and 10 mg/kg Benzene	Yes
What was the total surface area (in square feet) reclaimed	0
What was the total volume (in cubic yards) reclaimed	0
Summarize any additional remediation activities not included by answers (above)	N/A

*The responsible party must attach information demonstrating they have complied with all applicable closure requirements and any conditions or directives of the OCD. This demonstration should be in the form of a comprehensive report (in .pdf format) including a scaled site map, sampling diagrams, relevant field notes, photographs of any excavation prior to backfilling, laboratory data including chain of custody documents of final sampling, and a narrative of the remedial activities. Refer to 19.15.29.12 NMAC.*

I hereby certify that the information given above is true and complete to the best of my knowledge and understand that pursuant to OCD rules and regulations all operators are required to report and/or file certain release notifications and perform corrective actions for releases which may endanger public health or the environment. The acceptance of a C-141 report by the OCD does not relieve the operator of liability should their operations have failed to adequately investigate and remediate contamination that pose a threat to groundwater, surface water, human health or the environment. In addition, OCD acceptance of a C-141 report does not relieve the operator of responsibility for compliance with any other federal, state, or local laws and/or regulations. The responsible party acknowledges they must substantially restore, reclaim, and re-vegetate the impacted surface area to the conditions that existed prior to the release or their final land use in accordance with 19.15.29.13 NMAC including notification to the OCD when reclamation and re-vegetation are complete.

I hereby agree and sign off to the above statement	Name: Stuart Hyde Title: Senior Geologist Email: shyde@ensolum.com Date: 01/15/2026
--	--

Sante Fe Main Office  
Phone: (505) 476-3441

General Information  
Phone: (505) 629-6116

Online Phone Directory  
<https://www.emnrd.nm.gov/ocd/contact-us>

**State of New Mexico**  
**Energy, Minerals and Natural Resources**  
**Oil Conservation Division**  
**1220 S. St Francis Dr.**  
**Santa Fe, NM 87505**

QUESTIONS, Page 7

Action 543597

**QUESTIONS (continued)**

Operator: HILCORP ENERGY COMPANY 1111 Travis Street Houston, TX 77002	OGRID: 372171
	Action Number: 543597
	Action Type: [C-141] Remediation Closure Request C-141 (C-141-v-Closure)

**QUESTIONS**

<b>Reclamation Report</b>	
<i>Only answer the questions in this group if all reclamation steps have been completed.</i>	
Requesting a reclamation approval with this submission	No

Sante Fe Main Office  
Phone: (505) 476-3441

General Information  
Phone: (505) 629-6116

Online Phone Directory  
<https://www.emnrd.nm.gov/ocd/contact-us>

**State of New Mexico**  
**Energy, Minerals and Natural Resources**  
**Oil Conservation Division**  
**1220 S. St Francis Dr.**  
**Santa Fe, NM 87505**

CONDITIONS

Action 543597

**CONDITIONS**

Operator: HILCORP ENERGY COMPANY 1111 Travis Street Houston, TX 77002	OGRID: 372171
	Action Number: 543597
	Action Type: [C-141] Remediation Closure Request C-141 (C-141-v-Closure)

**CONDITIONS**

Created By	Condition	Condition Date
michael.buchanan	Remediation closure is approved.	1/26/2026
michael.buchanan	The reclamation report will need to include: Executive Summary of the reclamation activities; Scaled Site Map including sampling locations; Analytical results including, but not limited to, results showing that any remaining impacts meet the reclamation standards and results to prove the backfill is non-waste containing; At least one (1) representative 5-point composite sample will need to be collected from the backfill material that will be used for the reclamation of the top four feet of the excavation. The OCD reserves the right to request additional sampling if needed; pictures of the backfilled areas showing that the area is back, as nearly as practical, to the original condition or the final land use and maintain those areas to control dust and minimize erosion to the extent practical; pictures of the top layer, which is either the background thickness of topsoil or one foot of suitable material to establish vegetation at the site, whichever is greater; and a revegetation plan.	1/26/2026
michael.buchanan	A reclamation report will not be accepted until reclamation of the release area, including areas reasonably needed for production or drilling activities, is complete and meet the requirements of 19.15.29.13 NMAC. Areas not reasonably needed for production or drilling activities will still need to be reclaimed and revegetated as early as practicable.	1/26/2026
michael.buchanan	All revegetation activities will need to be documented and included in the revegetation report. The revegetation report will need to include: An executive summary of the revegetation activities including: Seed mix, Method of seeding, dates of when the release area was reseeded, information pertinent to inspections, information about any amendments added to the soil, information on how the vegetative cover established meets the life-form ratio of plus or minus fifty percent of pre-disturbance levels and a total percent plant cover of at least seventy percent of pre-disturbance levels, excluding noxious weeds per 19.15.29.13 D.(3) NMAC, and any additional information; a scaled Site Map including area that was revegetated in square feet; and pictures of the revegetated areas during reseeding activities, inspections, and final pictures when revegetation is achieved.	1/26/2026
michael.buchanan	A revegetation report will not be accepted until revegetation of the release area, including areas reasonably needed for production or drilling activities, is complete and meet the requirements of 19.15.29.13 NMAC. Areas not reasonably needed for production or drilling activities will still need to be reclaimed and revegetated as early as practicable.	1/26/2026
michael.buchanan	Per 19.15.29.13 E. NMAC, if a reclamation and revegetation report has been submitted to the surface owner, it may be used if the requirements of the surface owner provide equal or better protection of freshwater, human health, and the environment. A copy of the approval of the reclamation and revegetation report from the surface owner and a copy of the approved reclamation and revegetation report will need to be submitted to the OCD via the Permitting website.	1/26/2026