



SQ Environmental, LLC  
P.O. Box 1991  
Austin, TX 78767  
www.SQEnv.com  
(512) 900-7731

12 November 2025

Tami Knight  
New Mexico State Land Office  
Environmental Compliance Office  
310 Old Santa Fe Trail  
Santa Fe, NM 87501

Via E-Mail: [eco@nmslo.gov](mailto:eco@nmslo.gov)

**RE: Site Assessment and Remediation Plan  
Salt Water Disposal Permit No. SW-251  
State NO #1 SWD Facility, API No. 30-025-28468  
Lat/Long: 32.676861°, -103.399994°  
2.50 Acres at Pt. Lot 2 of Section 07, Township 19 South, Range 36 East  
Lea County, New Mexico  
SQE PN: 1180.038.001**

To Whom It May Concern:

This Site Assessment and Remediation Plan for the State NO #1 Salt Water Disposal (SWD) facility (State NO #1 SWD facility) described above is provided by SQ Environmental, LLC (SQE) on behalf of Select Water Solutions, LLC (Select Water).

This plan provides provisions for assessing the State NO #1 SWD facility for potential impacts from former oil and gas (O&G) activities, then subsequently performing remediation activities based on the results of site assessment activities.

#### Site Information

- Land Owner: New Mexico (NM) State Land Office (SLO)
- Land: 2.50 acres located within Pt. Lot 2 (Quarter-Quarter SWNW), Section 07, Township 19 South, Range 36 East, Lea County, New Mexico
- Lat/Long: 32.676861°, -103.399994°
- State NO #1 SWD Well (American Petroleum Institute [API] Number [No.] 30-025-28468)
  - Status: Plugged, Not Released
- Right of Entry (ROE) Permit for Remediation, Reclamation and Revegetation Contract (Permit) No. #SW-251-01-R (the executed ROE Contract provided by New Mexico SLO is provided in **Attachment A**)
  - Permittee: Select Water
  - Execution Date: 11 September 2025
  - Commencing Date: 15 April 2022
  - Expiration Date: 14 April 2026
- New Mexico Oil Conservation Division (OCD) Incident No. nGRL1318237822: Based on a search of OCD records, one incident was identified for the facility, and this incident (#nGRL1318237822) is unresolved as of the date of this report. This is discussed further below.



## Introduction

Select Water is in the process of returning the land identified above to the SLO. To support this effort, closure of the facility will be conducted in accordance with the requirements of New Mexico Administrative Code (NMAC) §19.15.29. The following bullets outline the primary components of the closure process to be implemented pursuant to NMAC §19.15.29:

- Site Assessment / Characterization (NMAC §19.15.29.11),
- Remediation and Closure (NMAC §19.15.29.12), and
- Restoration, Reclamation, and Re-Vegetation (NMAC §19.15.29.13).

This Site Assessment and Remediation Plan is being submitted to the SLO (and OCD) for review before initiating the site assessment / characterization component of the closure process. This plan is also intended to fulfil the requirements of the remediation and closure component of the closure process, which will be performed based on the results of site assessment activities.

A Site Assessment and Remediation Closure Report and Reclamation Plan will be submitted once the results of initial site assessment activities have been performed, and subsequent remediation activities (if necessary) have been completed.

The State NO #1 SWD facility is located approximately 15 miles west of downtown Hobbs, New Mexico. To access the facility, travel west from downtown Hobbs on United States (US) Highway (Hwy) 62 West (also referred to as US Hwy 180 West or Hobbs Hwy) for approximately 16 miles. Next, turn left (south) onto an unnamed well lease road at the intersection located at an approximate latitude/longitude of 32.686599°, -103.402212°, and continue south for approximately 0.75 miles until the facility is reached. The 'facility' discussed in this report refers to the approximately 2.5-acres tract of land used as the former the well pad. A Facility Location Map is included as **Figure 1** and a Facility Layout Map is included as **Figure 2**.

## Site Conditions and History

- The current Right of Entry Permit #SW-251-1-R was executed on 11 September 2025. The permit was retroactively commenced beginning on 15 April 2022 and will expire on 14 April 2026.
- Based on a review of OCD records, drilling records date back to 1983. This was corroborated by historical aerial imagery obtained from Google Earth, in which the facility location is shown as a well pad on an aerial photograph collected on 30 December 1985 (this is the earliest aerial image available for review on Google Earth). However, a water well was reportedly drilled at the pad location in 1953 to support oil well drilling operations. This indicates the well pad may have existed well before the 1980s.
- The saltwater disposal well on this facility (State NO #001 Well; API No. 30-025-28468) was plugged on 5 February 2018. According to information obtained from a NMOCD well query, the well status for this well is "plugged, not released."
- Most improvements associated with former saltwater disposal operations at the facility have been removed. As of September 2025, items remaining at the facility were generally limited to a concrete pad, minor amounts of general trash and debris, and unused poly and steel pipes. The current



road conditions to and from the facility appear to be suitable for access. The facility appears to be generally free of weeds and erosional features.

- The facility is located in a soil type known as “Kimbrough gravelly loam, dry, 0 to 3 percent slopes” according to the USDA Web Soil Survey. Typical profile for this soil type includes 0 to 3 inches of gravelly loam, 3 to 10 inches of loam, and 10 to 80 inches cemented material. According to the USDA website “Kimbrough Series” profile, these soils are used nearly exclusively for rangeland. Climax vegetation in the southern part of the distribution of this series reportedly includes sideoats grama, little bluestem, buffalograss, hairy grama, slim tridens, purple and wright threeawns, bushsunflower, gray goldaster, daleas, gayfeather, plains blackfoot, sundrops, catclaw, ephedra, hackberry, and javelinabrush. Climax vegetation in the northern part of the distribution of this series reportedly includes blue grama, lack grama, sideoats grama, little bluestem, sand dropped, New Mexico feathergrass, galleta, catclaw, feather dahlia, dotted gayfeather, plains blackfoot, slim tridens, hairy grama, rock daisy, catclaw, and broom snakeweed.

Based on observations from site reconnaissance performed by SQE in 2023, the natural ground surface surrounding the well pad is generally rocky (gravelly), and vegetation is sparse. Due to these naturally-occurring conditions, a variance from NMAC §19.15.29 is being proposed. More information regarding the requested variance is provided in the section below.

- Based on a search of the online OCD Incident Tracker using the well name, one incident was identified in connection to the well (i.e., OCD Incident #nGRL1318237822). Documentation regarding the incident is provided as **Attachment B** of this report. On 28 June 2013, a Form C-141 (Release Notification and Corrective Action) was submitted to the OCD. Based on the Form C-141, approximately 219.91 barrels (bbls) of produced water with iron sulfate was released after a pipe connection failure occurred above the master valve. The apparent release location for this spill event is shown on **Figure 3**. As part of emergency response actions, vacuum trucks were mobilized to the facility and they recovered 210 bbls of produced water. Based on these data provided in the C-141, the net volume released was approximately 9.91 bbls. The impacted area spanned approximately 140-ft by 210-ft (or 0.67 acres). According to the Form C-141, the impacted material was to be removed and hauled to the R360 Disposal Facility for disposal, and the area was to be backfilled. The final response actions (removal of impacted soil followed by backfilling) were to be completed by 2 September 2013. Based on information available on the OCD Permitting database using the “New Incident Search” feature, a request for a “Remediation Closure Report Extension” was received by the NMOCD on 15 August 2018, and subsequently approved by the NMOCD on the same day. Due to the extension, the Remediation Closure Report was due on 13 November 2018. However, there is no documentation available to confirm final response actions were completed, and NMOCD records indicate this incident has an “Active” status. The records available on the OCD Permitting database using the “New Incident Search” feature are provided in **Attachment B**.
- Based on a review of historical aerial imagery obtained from Google Earth, the tank battery was historically located on the eastern-central portion of the well pad (between at least 2009 and 2019) and does not appear to have been relocated during the operational history of the facility. An additional AST was observed on the western portion of the property in a 2019 aerial image; however, there is no indication that this additional AST was ever operational. Available historical aerial images are provided in **Attachment C**.
- Using nearby groundwater data gathered from the New Mexico Office of the State Engineer (OSE) Points of Diversion (POD) well database, the depth to groundwater in the immediate vicinity of the facility was determined to be between 50 and 100 ft below ground surface (bgs). This is supported



by the New Mexico POD identified as “L-02329,” which was reportedly drilled directly at the facility. Based on the well log, the shallow groundwater bearing zone for this well was encountered at 76 to 110 ft bgs. Because this well was drilled directly on the land the facility occupies, the depth to water data reported for this well is the best source of information for groundwater beneath the facility, and the depth to groundwater was confirmed to not be within 50 ft of the surface for this well (L-02329). Information regarding the depth to water data for POD L-02329 is provided as **Attachment D** to this report.

- Based on a review using the OCD Oil and Gas Map, the State NO #1 SWD facility is located on land that is classified as a “low” karst potential zone. A printout from the OCD Oil and Gas Map showing the facility in the low karst potential zone is provided as **Attachment E**.
- NMAC §19.15.29.12.C.(4) provides scenarios that would require the responsible party to treat the release as if it occurred less than 50 ft to ground water. Based on the evaluation of distances between the various features cited in NMAC §19.15.29.12.C(4) and the facility, the responsible party is not required to treat the release as if it occurred less than 50 ft to ground water. A detailed discussion of this evaluation and results, along with supporting documentation, is provided in **Attachment F** of this report.

#### Proposed Site Assessment and Remediation Activities

Site assessment and remediation activities will not disturb, dislodge, damage, destroy, or remove any cultural properties on state trust lands. The work will be done in compliance with the Cultural Properties Protection (CPP) Rule, wildlife, and other biological rules, as applicable. Details regarding the proposed site assessment and remediation activities are provided below:

- **Facility Access.** Access to the facility for performing surface equipment removal, site assessment, and remediation activities will be completed under ROE Permit #SW-251-1-R. The ROE Permit authorizes the permittee (and the permittee’s contractor [SQE] and subcontractors) to close the SWD operation, complete site cleanup and remediation, and reclaim and revegetate the facility in accordance with the contract and all applicable rules through 14 April 2026.
- **Surface Equipment & Refuse Removal.** All surface equipment, miscellaneous oilfield refuse, and debris (including all trash on and around the well site) will be removed from the facility. Site reconnaissance was performed in October 2025, and no tanks, large equipment, or machinery were present. The following is a general inventory of the items observed at the facility:
  - earthen berms,
  - approximately 350 ft of 4 inch poly-pipe
  - two 4 inch steel H-braces
  - approximately 30 ft of 14 inch poly-pipe
  - approximately 40 ft of 10 inch poly-pipe
  - approximately 17 ft of 12 inch steel pipe
  - a concrete pad measuring 15 ft wide by 20 ft long x 8 inches thick. This pad is constructed with a 6-inch concrete berm along its perimeter.

The items presented above appeared to be new and no discoloration or staining was identified on these materials. Prior to removing these items from the facility, an inspection will be conducted in accordance with the Migratory Bird Treaty Act (MBTA) to confirm there are no birds or bird nests present for any species protected by the MBTA. Equipment that is deemed as salvageable will be



hauled to separate facilities for future use, and remaining materials will be hauled offsite for disposal at a state-approved disposal facility.

- Site Assessment. Soil samples will be collected at six locations to assess potential impacts from the June 2013 incident discussed above (Incident #nGRL1318237822), as well as other areas that may have been impacted by historical operations. The proposed sample locations are presented on **Figure 3**. Proposed sample locations include:
  - Location B-1 – central portion of the pad near the former SWD well head. This is the apparent release location, and is the area most likely to have been impacted by the historical spill event. Additionally, site reconnaissance performed in October 2025 identified a small area (20-ft by 20-ft) of discolored soil at the surface at this location.
  - Locations B-2 and B-3 – two locations downgradient of the former well head (i.e., southwestern corner of the bermed area and southern portion of the bermed area). These two downgradient locations were bound by earthen berms (at the time of the spill event, and the earthen berm currently remains). Because these earthen berms were present at the time of the release event, the released fluids would have had the tendency to flow towards and accumulate at these two locations.
  - Locations B-4 and B-5 – two locations within the former tank battery. Although the tank battery was constructed with a poly liner, these two locations are proposed to confirm any residual releases that may have occurred at the tank battery were properly contained by the poly liner.
  - Location B-6 – site reconnaissance performed in October 2025 identified a small area (10-ft by 40-ft) of discolored soil at the surface at this location.

Soil samples at each location will be collected in 1-ft depth intervals to a minimum depth of 5 ft bgs (i.e., samples collected from 0 to 1 ft bgs, 1 to 2 ft bgs, 2 to 3 ft bgs, 3 to 4 ft bgs, and 4 to 5 ft bgs). Additional soil samples may be collected at greater depths for purposes of vertical delineation.

Field screening methods for hydrocarbon and chloride impacts will be utilized to identify impacted soils for each sample collected. Field screening will include the use of a photoionization detector (PID) to screen soils for volatile organic compounds (hydrocarbon impacts) and a salinity meter to screen soil for chloride. The hydrocarbon content for a soil sample will be evaluated based directly on the PID readings, which are typically provided in units of parts per million (ppm).

Soil samples will be screened for chloride, and the field screening form to be used for documenting chloride field screening measurements is provided in **Attachment G**. The following presents the field procedures to be used for screening soil samples for chloride:

- Power on digital scale and confirm the scale is set to measure mass in units of grams (g).
- Place dedicated, disposable cup on top of scale.
- Once the scale reading has stabilized, tare the scale (“zero out” the scale).
- Thoroughly homogenize the soil sample, then add soil into cup. Record final soil mass, as shown on the digital scale, on **Column B** of the field screening form.
- Add distilled water into graduated cylinder. Record final water volume on **Column A** of the field screening form with the highest degree of accuracy offered by the graduated cylinder.
- Transfer all distilled water from the graduated cylinder into the cup containing the known mass of soil.



State NO #1 SWD – Site Assessment & Remediation Plan

12 November 2025

Page 6

- o Thoroughly stir the soil and water mixture until the soil is mostly broken down.
- o Power on chloride / salinity meter. Make sure meter is set to measure the concentration of salt.
- o Place meter probe into the solution of the soil & water mixture and wait for the readings to stabilize. Once the reading has stabilized, record the final salinity measurement in **Column D** of the field screening form.
- o Calculate the Dilution Factor by taking the total water volume used for preparing your soil and water mixture (i.e., **Column A**) by the soil mass in the mixture (i.e., **Column B**). Document the calculated Dilution Factor on **Column C** of the field screening form.
- o Calculate the chloride concentration of your soil sample by multiplying the Dilution Factor (i.e., **Column C**) by the Meter Salt Reading (i.e., **Column D**) and the “0.607” conversion factor (**Column E**). Document the calculated chloride concentration on the appropriate cell on the field screening form.
- o Discard cup along with the soil and water mixture, and decontaminate probe in preparation for performing screening of the next sample.

Based on the results of field screening activities, one sample from each location will be selected for laboratory analysis. The selected sample will be based on the sample screened with the highest PID or chloride readings. Laboratory analysis will include chloride by EPA Method 300.0, total petroleum hydrocarbons (TPH) by SW-846 Method 8015M, and benzene, toluene, ethylbenzene, and xylenes (BTEX) by SW-846 Method 8021B or 8260B. TPH results reported by this method will include gasoline range organics (GRO), diesel range organics (DRO), motor oil range organics (MRO), and total TPH. Because the spill event involved the release of produced water, it is believed that soil impacted with chloride will be the driver for remediation and / or reclamation (and not BTEX or TPH), if impacted soils are identified.

Each of the soil samples will be placed into new, laboratory-supplied sample containers, and then placed on ice in laboratory-supplied coolers. The soil samples will be labeled according to the convention B-*nn* (*uu-ll*), where “*nn*” indicates the sequential soil sample location number, and “*uu*” and “*ll*” indicates the upper and lower depth interval for which the sample was collected, in units of ft bgs. All of the samples will be submitted to a National Environmental Laboratory Accreditation Program (NELAP)-certified laboratory, although not all samples will necessarily be requested for analysis.

The results for the soil samples will be compared against Remediation and Closure Limits, as presented in Table I of NMAC §19.15.29.12 for sites with a minimum depth to groundwater (DTGW) that is between 50 and 100 ft bgs.

If a given sample is collected within the upper 4 ft, the results will also be compared against reclamation limits in accordance with NMAC §19.15.29.13. The remediation and closure limits, as well as the reclamation limits are summarized in the table below.

CONSTITUENT	REMEDICATION & CLOSURE LIMITS (DTGW 51-100 ft)	RECLAMATION LIMITS*
Chloride	10,000 mg/kg	600 mg/kg
GRO+DRO+MRO	2,500 mg/kg	100 mg/kg
GRO+DRO	1,000 mg/kg	None
Total BTEX	50 mg/kg	50 mg/kg
Benzene	10 mg/kg	10 mg/kg



\* The reclamation limits are based on NMAC §19.15.29.13 and only apply to the upper 4.0 ft of soil with respect to the original / natural ground surface.

As described above, only the sample with the highest field-screened chloride reading from each boring will initially be submitted for laboratory analysis. If the field-screened chloride concentration is within fifteen percent (15%) of the laboratory-reported value, the remaining field-screened measurements for samples collected from that boring will be considered accurate and suitable for comparison against the applicable Remediation & Closure Limit and/or Reclamation Limit.

If the field-screened result differs by more than fifteen percent (15%) from the laboratory-reported value, the sample with the next highest field-screened chloride measurement will be submitted for laboratory analysis, provided the initial sample result exceeded a Remediation and Closure Limit, or Reclamation Limit. These contingency samples will only be analyzed for the parameter(s) that exceeded a regulatory limit in the initial sample.

This process will continue—analyzing subsequent samples with the next highest field-screened chloride concentrations—until either all samples from the boring have been analyzed or a field-screened measurement is confirmed to be within fifteen percent (15%) of the corresponding laboratory result, and vertical delineation is confirmed. For any sample with both field-screened and laboratory results for a given parameter, the laboratory-reported result will take precedence.

In the event a given sample exceeds a regulatory level for TPH or BTEX, then the sample with the next highest field-screened chloride result will be analyzed by a laboratory for the parameter(s) that exceed a Remediation & Closure Limit or Reclamation Limit. This process flow is based on the premise that increased chloride concentrations in soil correlate with higher concentrations of TPH and BTEX.

This process of analyzing additional samples for the appropriate parameters will continue until vertical delineation has been achieved for each proposed boring location. The analytical results for these samples will be presented in a subsequent report.

- Cultural Properties Protection. If necessary, an archeological survey will be completed. The need for an archeological survey will be triggered in the event soils identified with one or more parameters that exceed the criteria outlined above are not delineated within the permitted area, and thus, remediation would extend beyond the facility boundary. In this case, remediation and/or reclamation activities would be needed in area(s) with undisturbed soils. As such, the archeological survey would be performed prior to these activities in accordance with CPP rules. The results of the archeological survey would be provided in a subsequent report.
- Background Soil Sampling. Soil sampling at “background” locations (not impacted by oilfield activities) may be collected as part of Site Assessment activities and analyzed for chloride by field screening and/or laboratory methods. If background samples are collected, they will be at locations that do not have the potential for historical impacts and are approximately 100-ft upgradient of former SWD process areas. In the event background samples are collected, they will be collected in 1-ft depth intervals to a depth of 5 ft bgs (i.e., samples collected from 0 to 1 ft bgs, 1 to 2 ft bgs, 2 to 3 ft bgs, 3 to 4 ft bgs, and 4 to 5 ft bgs). If field screening indicates that background concentrations may have chloride concentrations above 600 mg/kg, samples will be submitted for laboratory analysis. If a background chloride concentration is established that exceeds 600 mg/kg chloride, the background value may be used to replace the 600 mg/kg reclamation limit.
- Proposed Remediation Activities. Based on the results of site assessment activities described above, remediation activities will be performed, if necessary. Remediation activities will include the



excavation and removal of impacted soil for offsite disposal at a state-approved disposal facility (i.e., dig and haul). Remediation will be initiated at location(s) identified with soil impacts above regulatory levels, and will extend outwards (laterally) in each cardinal direction (north, south, east, and west). As remediation (excavation) is being performed in the outwards (lateral) direction, field-screening of the soil remaining in the excavation will be continuously performed with the collection of grab samples. If field-screening results for these samples indicate the presence of impacted soil above regulatory levels, further excavation will be performed in the respective direction until field-screening results confirm impacted soil above regulatory levels has been removed. The results of these grab samples will be used to establish lateral delineation pursuant to NMAC §19.15.29.11.A.(5)(b), which requires horizontal and vertical delineation using Table I of 19.15.29.12 NMAC constituents.

Subsequently, 5-point composite samples will be collected and field-screened for chloride to confirm the area represented by the composite sample is not measured with chloride above the Remediation and Closure Limit (and Reclamation Limit if soil is in upper 4-ft). The 5-point composite samples will be collected from the entire excavation floor and all sidewalls, and each sample will represent no greater than 200 square feet (sq ft). Once field-screening indicates the remaining soil in the excavation and sidewalls does not exceed the Remediation and Closure Limit (and Reclamation Limit if soil is in upper 4-ft), remediation for that particular location will be deemed complete.

Final sampling notification will be provided to the State Land Office (SLO) and the Oil Conservation Division (OCD) at least two business days prior to sampling activities. Excavation and floor (composite) samples will be analyzed only for those parameter(s) that exceeded the applicable Remediation and Closure Limit (or Reclamation Limit) at each location, as determined during site assessment activities.

If chloride is the only parameter exceeding a regulatory limit at a given location, the field-screening procedures described above will be used to confirm that remaining soil concentrations are below the applicable regulatory levels. Impacted soil generated during excavation activities will be transported to a state-approved disposal facility and appropriate manifesting procedures will be used. All waste disposal manifests will be included in the subsequent Site Assessment and Remediation Closure Report.

Restoration and reclamation of the well pad and any remediated areas will not occur until both the SLO and OCD approve a Site Assessment and Remediation Closure Report. This report will provide a detailed description of the site assessment and remediation activities performed, the results of assessment and post-remediation (5-point composite) samples, laboratory reports, and other documents needed to support the statements in the report. The Site Assessment and Remediation Closure Report will also propose a Reclamation Plan for the facility. The restoration and reclamation activities to be proposed will be in accordance with NMAC §19.15.29.12.

- Variance Requests.

As described in NMAC §19.15.29.14, “*the responsible party may file a written request for a variance from any requirement of 19.15.29 NMAC with the appropriate division district office.*” Pursuant to this rule, a request is being made to authorize Select Water to exclude the road from restoration and reclamation activities. This road provides essential access to oil and gas (O&G) and ranching facilities located south of the site and should therefore remain in place. This road crosses the State



## State NO #1 SWD – Site Assessment &amp; Remediation Plan

12 November 2025

Page 9

NO #1 facility in a diagonal fashion from the northeast portion of the facility to the southwest portion. The approximate location of this road is shown on **Figure 3**. If this variance is approved, remediation activities for the soil that comprises the road, if needed, would only be performed in the event the soil exceeds the Remediation and Closure Limits, and Reclamation Limits for the upper 4-ft of soil for the road would not be considered as the road is intended to be left in place (and not removed as part of site reclamation). In the event the soil that comprises the road is identified with parameters that exceed Remediation and Closure Limits, the portions of the road identified with the exceedances will be excavated, then immediately backfilled with suitable soil in order to restore the road.

Additionally, a variance is requested regarding the requirements for lateral delineation and potential reclamation activities that would otherwise be required under the current rule. As described above, SQE proposes to delineate both vertically and horizontally any areas where soil parameters exceed the applicable regulatory limits. However, certain areas adjacent to the permitted boundary—particularly those southwest of the well pad—appear to have undergone surface earthwork during initial pad construction. The soil in these areas now supports more vegetative growth than the surrounding native terrain. Field observations indicate the vegetation density in these areas is greater than in adjacent undisturbed native areas, suggesting that the soils are not adversely impacted by chloride or oil and gas constituents at levels that would inhibit ecological productivity. Accordingly, SQE requests a variance to exclude these areas (depicted with orange highlighting on **Figure 3**) from reclamation activities. Conducting reclamation in these well-vegetated areas would be counterproductive, as it would require the removal of healthy vegetation and importing soil and seed to reestablish vegetation that is already performing better than native conditions. It is unlikely that reclamation activities would achieve equal or improved vegetative success compared to the vegetative conditions that are already established at these locations. Based on these findings, SQE respectfully requests that the Commissioner approve this variance, such that reclamation of these vegetated areas will not be required, even if impacts above the Reclamation Limits are identified in the upper four feet (4 ft) of soil adjacent to them. This variance applies solely to the reclamation requirements associated with the upper 4-ft soil interval for the specified areas (shown with orange highlighting on **Figure 3**). Should any of these areas be identified with exceedances of Remediation and Closure Limits, the impacted soil would be excavated and properly disposed of offsite to protect public health, freshwater resources, and the environment.

The proposed variances will not adversely affect human health or the natural environment, nor will they compromise the reclamation objectives established under NMAC §19.15.29.13. Additionally, the proposed variances provide equal or better protection of fresh water, public health, and the environment.

- Facility Inspection. Another visual inspection of the facility will be performed. Any area identified with visual impacts that has not already been accounted for in this proposed plan will be documented, and additional soil samples will be collected at those area(s) for evaluation of potential impacts above Remediation & Closure Limits (and Reclamation Limits). In the event the visually-impacted areas are remediated, the remaining soil will be sampled in accordance with NMAC §19.15.29.12.D (i.e., 5-point composite samples that represent no more than 200 square feet) and the analytical results will be compared against the Remediation & Closure Limits, as well as the Reclamation Limits if the remaining soil is within the upper 4 ft with respect to the natural ground surface.



State NO #1 SWD – Site Assessment & Remediation Plan

12 November 2025

Page 10

In accordance with the ROE Permit SW-251-1-R and NMAC regulations, a Site Assessment and Remediation Closure Report and Reclamation Plan will be submitted to the SLO and OCD as a separate report for review and approval once the approved site assessment and remediation plan has been approved by both parties.

#### Schedule of Implementation

- 12 November 2025 – This report (Site Assessment and Remediation Plan) is submitted to the SLO and OCD for review and approval.
- 12 November 2025 to 12 January 2026 (60-day period) – Review Period. The SLO and OCD have 60 days to review the submitted plan and issue a ruling regarding the proposed plan and requested variances.
- 90-day period after approval of a Site Assessment and Remediation Plan by both the SLO and OCD (Execution Phase) – Surface Equipment and Refuse Removal, Site Assessment Activities, and Remediation Activities will be performed. An overhead powerline survey will also be performed during this period, and any electrical appurtenances that require removal will be scheduled for removal within 180 days.
- Site Assessment and Remediation Closure Report and Reclamation Plan – To be submitted to SLO and OCD for review within 60 days after completion of the execution phase.

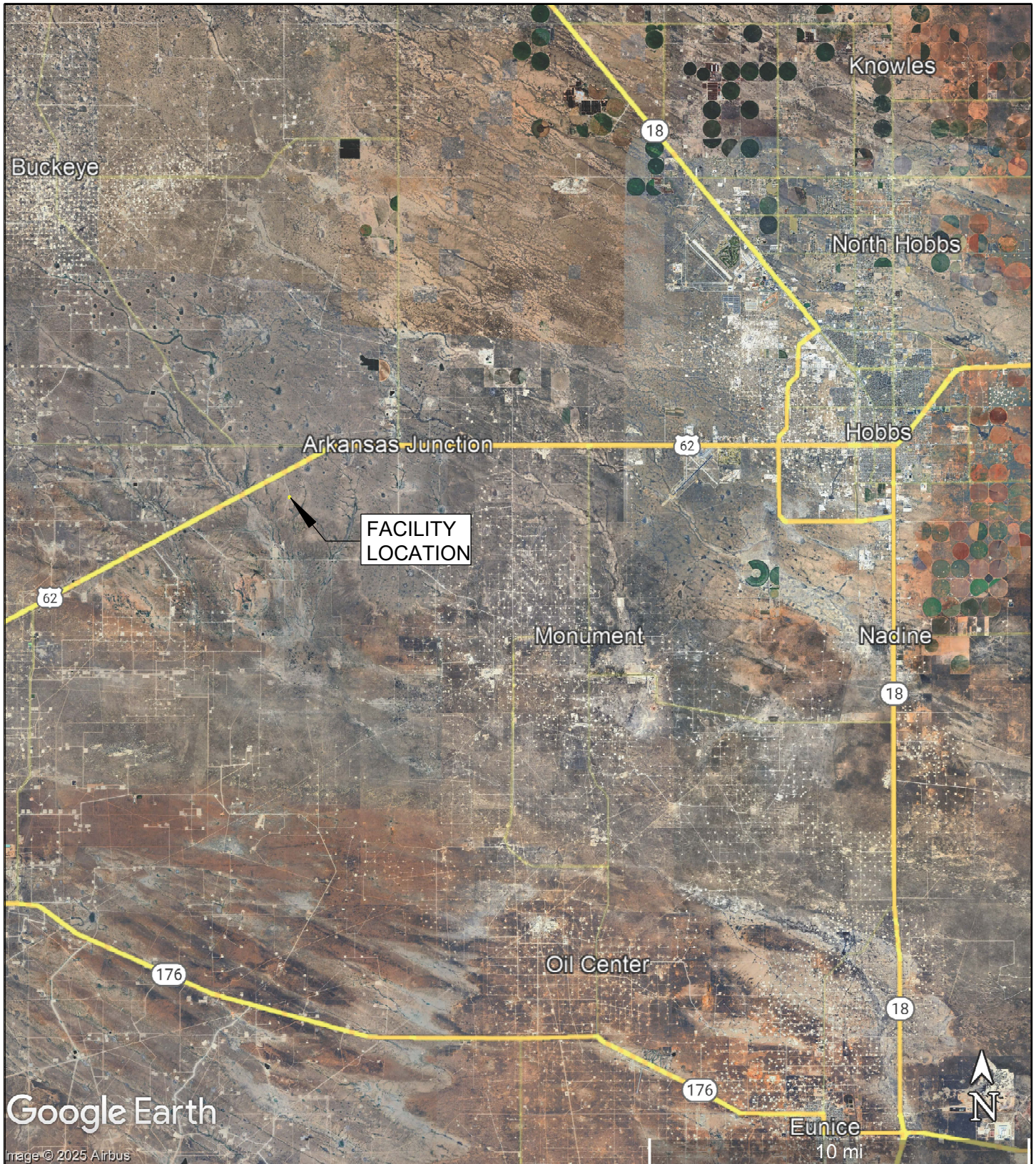
#### Closing

Please let us know if you have any questions or comments regarding this information. Eric may be reached by e-mail at [E.Friedman@SQEnv.com](mailto:E.Friedman@SQEnv.com) or by phone at 561-906-8028, and Randy may be reached by e-mail at [R.Gonzalez@SQEnv.com](mailto:R.Gonzalez@SQEnv.com) or by phone at 512-541-6028.

Sincerely,  
**SQ Environmental, LLC**

Eric Friedman, P.G.  
Project Manager

Randy Gonzalez  
Senior Project Manager



Google Earth

Image © 2025 Airbus

Google Earth Imagery Date: December 2024



SQ Environmental, LLC

### FIGURE 1

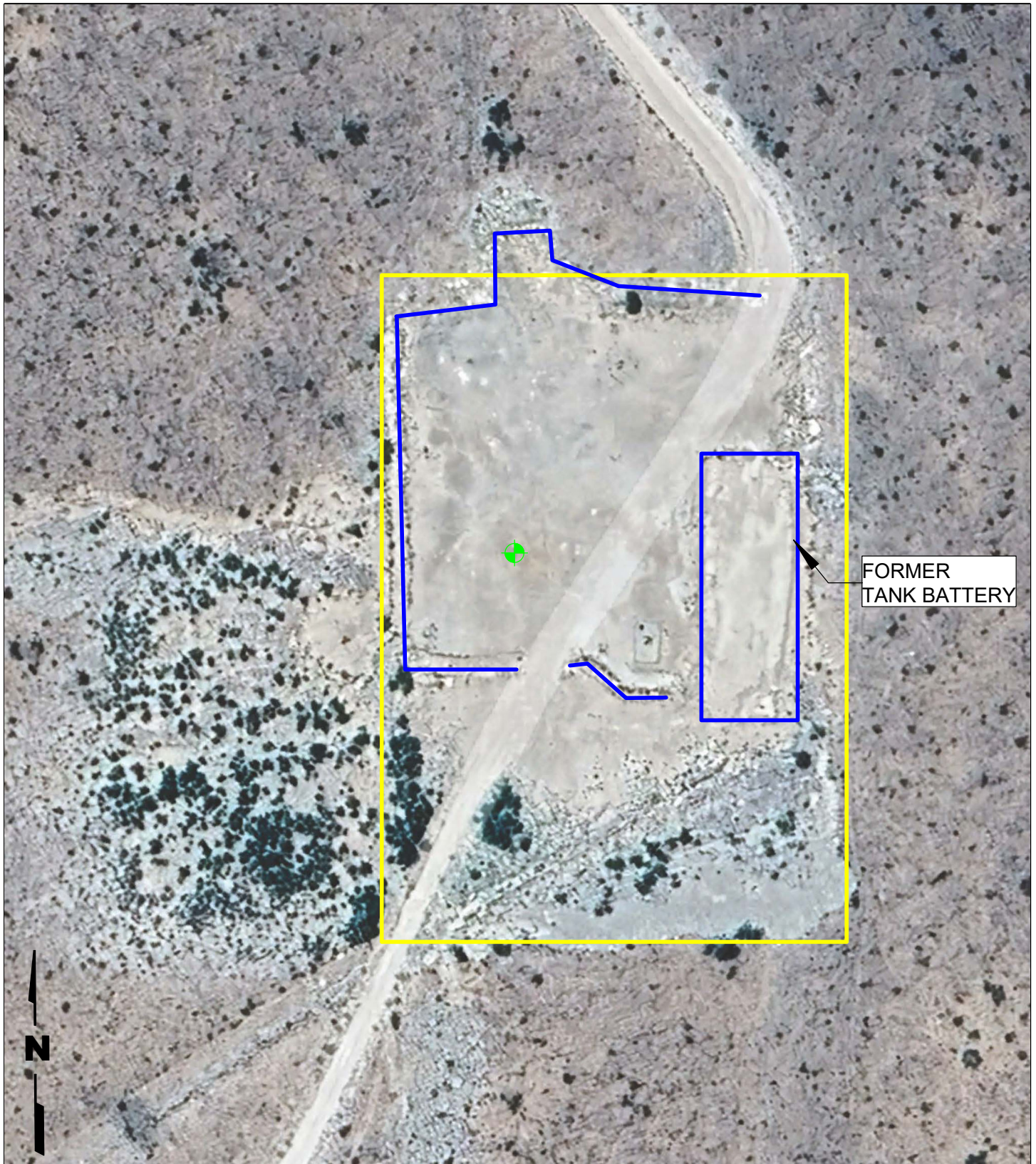
### FACILITY LOCATION MAP

State NO #1 SWD Facility (API No. 30-025-28468)  
 32.676861°, -103.399994°  
 Lea County, New Mexico

SCALE: AS SHOWN




DATE: NOV 2025

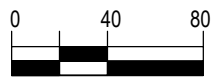
PN: 1180.038.001



**LEGEND**

Google Earth Imagery Date: June 2024

-  Facility Boundary (2.5-Acre Permitted Area)
-  Residual Berm
-  Former SWD Well



ALL LOCATIONS ARE APPROXIMATE



**SQ Environmental, LLC**

**FIGURE 2**

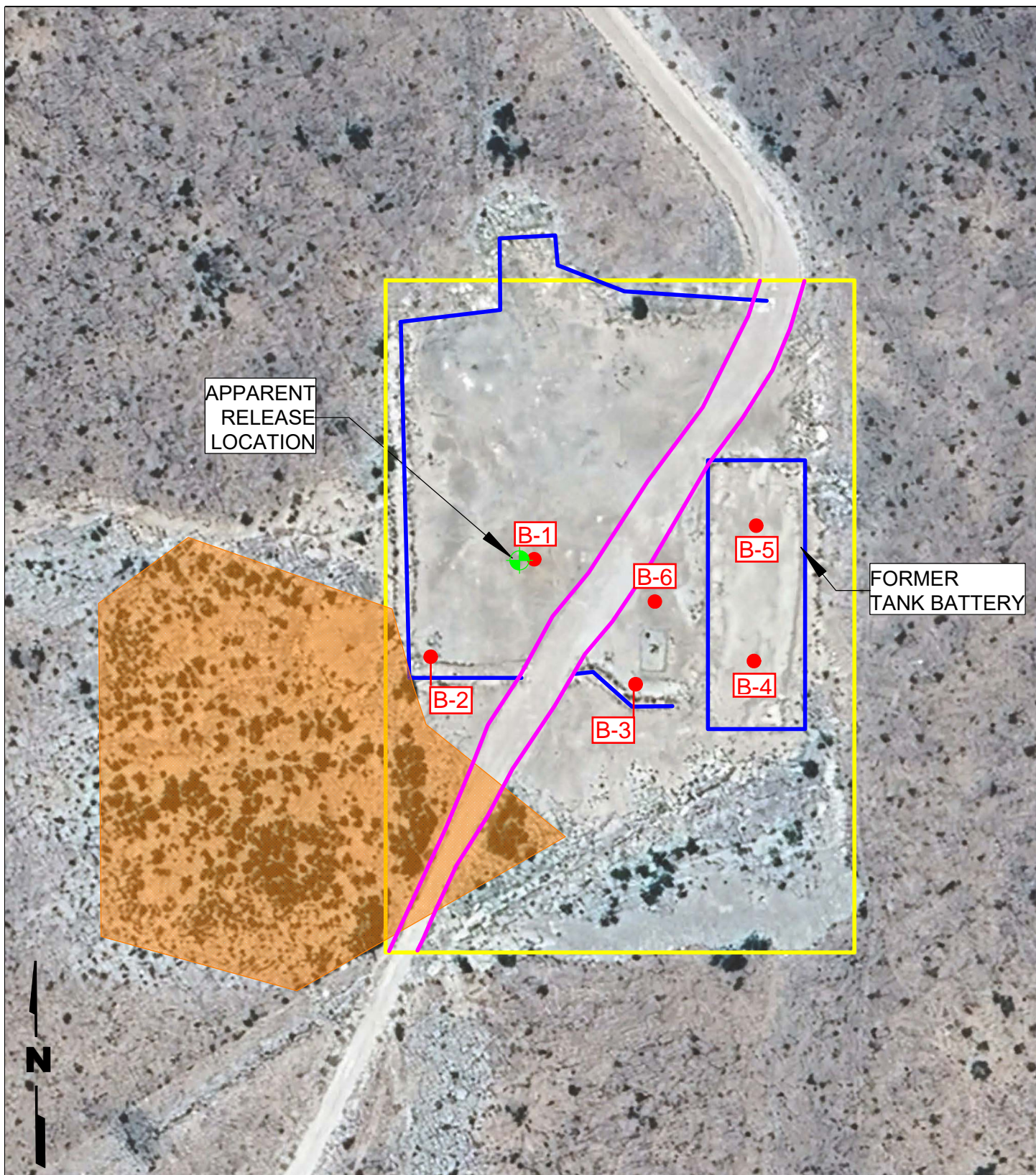
**FACILITY LAYOUT MAP**

State NO #1 SWD Facility (API No. 30-025-28468)  
 32.676861°, -103.399994°  
 Lea County, New Mexico







SCALE: AS SHOWN

DATE: NOV 2025

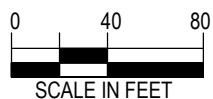
PN: 1180.038.001



**LEGEND**

-  Facility Boundary (2.5-Acre Permitted Area)
-  Proposed Boring Location
-  Former SWD Well
-  Residual Berm
-  Area of Established Vegetation
-  Road through Easement that will Remain

Google Earth Imagery Date: June 2024  
 ALL LOCATIONS ARE APPROXIMATE



**SQ Environmental, LLC**

**FIGURE 3**

**REMEDATION PLAN MAP**

State NO #1 SWD Facility (API No. 30-025-28468)  
 32.676861°, -103.399994°  
 Lea County, New Mexico

SCALE: AS SHOWN

DATE: NOV 2025

PN: 1180.038.001

---

---

ATTACHMENT A

---

---



Stephanie Garcia  
Richard  
COMMISSIONER

*State of New Mexico*  
*Commissioner of Public Lands*

310 OLD SANTA FE TRAIL  
P.O. BOX 1148  
SANTA FE, NEW MEXICO 87504-1148

COMMISSIONER'S  
OFFICE  
Phone (505) 827-5760  
Fax (505) 827-5766  
www.nmstatelands.org

September 11, 2025

Kim Henderson  
Select Water Solutions LLC  
12515 Carriage Way  
Oklahoma City, OK 73142

**RE: Issue of NM State Salt Water Disposal ROE Permit No. SW-251-01-R  
(State NO #1, API 30-025-28468, Lea County)**

Dear Ms. Henderson,

Enclosed for your records is a fully executed original of the above referenced salt water disposal right of entry permit. The Land Office is in receipt of your \$1,000.00 payment which is recognized as the rent for the period August 1, 2025 through July 31, 2026.

The well on this easement has been plugged with a Plugged not released status. Please continue every effort to remediate all open spills by working with our Environmental Compliance Office 'ECO'. You are required to submit a workplan to ECO prior to conducting the site assessment.

Thank you for doing business with the State Land Office. If we can be of further assistance regarding this easement, please call me at (505) 827-5849, [fcrosby@nmslo.gov](mailto:fcrosby@nmslo.gov).

Respectfully,

A handwritten signature in cursive script that reads "Faith Crosby".

Faith Crosby  
OGMD/Water Bureau

Enclosures

NEW MEXICO STATE LAND OFFICE  
Commissioner of Public Lands  
New Mexico State Land Office Building  
P.O. Box 1148, Santa Fe, NM 87504-1148

RIGHT OF ENTRY PERMIT FOR REMEDIATION,  
RECLAMATION AND REVEGETATION  
CONTRACT NO. SW- 251-1-R

**1. RIGHT OF ENTRY PERMIT**

This permit is issued under the authority of NMSA 1978, Section 19-1-2. Therefore, and in consideration of and subject to the terms, covenants, conditions, agreements, obligations and reservations contained in the permit and all other existing rights, the Commissioner of Public Lands, New Mexico State Land Office, State Of New Mexico, hereinafter called "COMMISSIONER," grants to Select Water Solutions, LLC, whose address is 12515 Carriage Way, Oklahoma City, OK 73142, hereinafter called "PERMITTEE," authorized use of a specific tract(s) of State Trust Land only for the term, and only for the permitted use, described in this permit.

**2. TERM AND LAND DESCRIPTION**

For good and valuable consideration a right of entry is granted for a term of **4** years, commencing 04/15/2022 and ending 04/14/2026 to the following State Trust Lands in Lea County:  
LE

<i>Quarter-Quarter</i>	<i>Section</i>	<i>Township</i>	<i>Range</i>	<i>Acreage</i>	<i>OCD Well-site name</i>	<i>API Number</i>
Pt. Lot 2	07	19S	36E	2.50	State NO #1	30-025-28468

**3. ANNUAL RENT and PROCESSING FEE**

ANNUAL RENT \$ 1,500.00 (one thousand five hundred dollars)

Due at time of signing - \$6,000.00

ONE-TIME PROCESSING FEE \$250.00 (two hundred fifty dollars)

**4. PERMITTED USE, PERSONNEL, EQUIPMENT AND MATERIALS**

Permitted use is for the purpose of: closing the salt water disposal operation conducted under Salt Water Disposal Easement No. SW-251, including taking all the necessary steps to get the Subject Well changed to **Plugged, Site Released** by the OCD. Next, the Permittee shall commence complete site cleanup including remediation, addressing OCD

SWD-251-1-R

Page 1 of 5

OGMD/WB-SW-ROE Rev. 2019-05-01

\$250.00

00170 Fees

\*\*

\$6,000.00

00169 LandSusp

\*\*

2025 SEP -9 AM 10:13

incident #nGRL1318237822, reclamation and revegetation in accordance with the SW Easement and the reclamation standards and procedures set forth in NMAC § 19.2.100.67 and incorporated by reference into the SWD Easement. The Permittee shall not commence any remediation, reclamation or revegetation until a remediation, reclamation and revegetation plan has been approved by the New Mexico State Land Environmental Compliance Office 'ECO'. Subject to approval of the Commissioner, this Permit shall be renewed until remediation, reclamation and revegetation is completed.

Personnel expected to be present on State Trust Land to accomplish the work under this permit: Select Water Solutionsm LLC personnel, SQ Environmental, LLC (SQE) personnel, and subcontractors

Equipment & Materials expected to be present on State Trust Land to accomplish the work under this permit: Hydraulic-operated equipment (e.g., backhoes, trackhoes, front-end loaders, skylifts), environmental drilling rigs, trucks, trailers, and roll-off boxes

***The granting of this permit does not allow access across private lands.***

## 5. IMPROVEMENTS

No improvements shall be placed on the premises without the prior written consent of the Commissioner.

## 6. RESERVATIONS

Commissioner reserves the right to execute leases, rights of way, easements, permits, exchange agreements, sale agreements, permits and other lawful rights on or across the land covered by this permit, including but not limited to any such rights for mining purposes and for the extraction of oil, gas, salt, geothermal resources, and other mineral deposits there from and the right to go upon, explore for, mine, remove and sell same.

## 7. COMPLIANCE WITH LAWS

Permittee shall at its own expense comply fully with and be subject to all applicable regulations, rules, ordinances, and requirements of law or of the Commissioner, including but not limited to the regulations of the State Land Office; Chapter 19 NMSA governing State Trust Lands; federal and state environmental laws and regulations; and the New Mexico Cultural Properties Act, NMSA 1978 Sections 18-6-1 through 18-6-23. It is illegal for any person or his agent to appropriate, excavate, injure, or destroy any historic, or prehistoric ruin or monument, or any object of historical, archaeological, architectural, or scientific value situated on lands owned or controlled by the State Land Office without a valid permit issued by the Cultural Properties Review Committee and approved by the Commissioner of Public Lands.

## 8. HOLD HARMLESS AND IMDEMNIFICATION

The Permittee shall save, hold harmless, indemnify, and defend the Commissioner and the State of New Mexico, and any of their employees, agents, contractors, and surface lessees, in both their official and individual capacities, from any and all liability, claims, losses, damages, or expenses arising from (i) the occupancy or use of the premises by the Permittee

2025 SEP -9 AM 10:15

or the Permittee's employees, agents, contractors or invitees; (ii) the operations or presence on the premises, or on adjacent or proximate state trust lands, for the purposes of this Permit, of the Permittee or Permittee's employees, agents, contractors or invitees; or (iii) the presence of Hazardous Waste in, under, upon or otherwise affecting the premises or adjacent or proximate property as a result of the Permittee's operations under this Permit. This Hold Harmless and Indemnification clause covers any claim, including any brought in any court or before any administrative agency, of any loss or alleged loss, and any damages or alleged damages asserted with respect to any violation or alleged violation of any state, federal or local law or regulation, including but not limited to any environmental law or regulation, any cultural properties law (including the New Mexico Cultural Properties Act, cited above) or regulation, and any alleged damage to the property, rights or interests of any State Land Office lessee, right-of-way holder, or other permittee.

**9. AMENDMENT**

This permit shall not be altered, changed, or amended except by an instrument in writing executed by Commissioner and Permittee.

**10. WITHDRAWAL**

Commissioner reserves the right to withdraw any or all of the land authorized for use under this permit. If applicable, Permittee shall vacate the acreage specified within 30 days after receipt of written notification of withdrawal from the Commissioner.

**11. CANCELLATION**

The violation by Permittee of any of the terms, conditions, or covenants of this permit or the nonpayment by Permittee of the fees due under this permit shall at the option of the Commissioner be considered a default and shall cause the cancellation of this permit 30 days after Permittee has been sent written notice of such. Notwithstanding any such cancellation, all accrued obligations of the Permittee to remove improvements and equipment, to perform surface reclamation and revegetation and to indemnify the Commissioner shall remain until fully performed, and the Commissioner may, at the Commissioner's sole discretion, forfeit any bond securing Permittee's performance or obtain performance of Permittee's obligations at Permittee's expense.

**12. PRESERVE AND PROTECT**

The Permittee agrees to preserve and protect the natural environmental conditions of the land encompassed in this permit, and to take those reclamation or corrective actions that are accepted soil and water conservation practices and that are deemed necessary by the Commissioner to protect the land from pollution, erosion, or other environmental degradation. The Permittee further agrees not to injure the property of, or interfere with the operations or rights of, any State Land Office lessee, right-of-way holder, easement holder or other permittee who has rights to use the State Trust Land subject to this permit.

**13. REMOVAL OF EQUIPMENT, MATERIALS, AND WASTE**

The Permittee agrees to remove from the State Trust Lands, no later than the end of the term of this permit, all equipment, and materials it has placed or brought upon the land and

2025 SEP -9 AM 10:51

to clean up and remove from the land any trash, waste, effluent, or other products used or brought upon the land in connection with this permit.

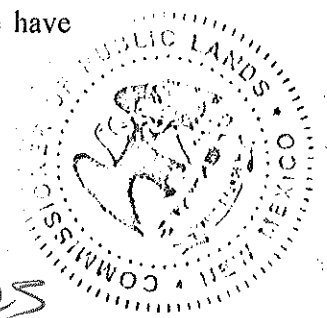
#### 14. SPECIAL INSTRUCTIONS AND/OR RESTRICTIONS

1. No off road traffic allowed.
2. No wood collection or tree cutting allowed.
3. Disturbing, dislodging, damaging, defacing, destroying or removing historical archaeological, paleontological or cultural sites or artifacts is prohibited.
4. Disturbing, dislodging, damaging, defacing, destroying any improvement, fixture, item, object or thing placed or located in, under or upon the land is prohibited.
5. This permit does not grant a right to enter State Trust Lands to which there is no public access.
6. Any uses or activities not within the scope of this permit are not allowed unless prior written approval from the Commissioner of Public Lands is granted.
7. OTHER: Within 45 days a reclamation plan with a specific seeding proposal must be submitted to, and approved by, the NMSLO Environmental Compliance Office at;

Subject line: SWD Closures  
eco@nmslo.gov

2025 SEP -9 AM 10:13

IN WITNESS WHEREOF, the Commissioner of Public Lands and the Permittee have signed this Permit to be effective the day and year above written.



**GRANTOR:**  
NEW MEXICO COMMISSIONER OF PUBLIC LANDS

By: S. Garcia / GB  
Stephanie Garcia Richard / Commissioner of Public Lands

Date: 9/11/25

**GRANTEE:**  
SELECT WATER SOLUTIONS, LLC

By: [Signature]  
Name: Kim Henderson  
Title: Sr Director

Date: 8/15/25

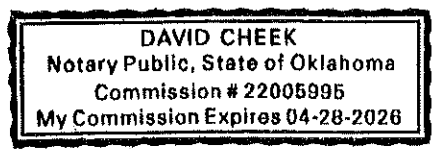
**ACKNOWLEDGMENT IN A REPRESENTATIVE CAPACITY**

State of Oklahoma  
County of Canadian

This instrument was acknowledged before me on 8/15/2025 (date) by  
Kim Henderson (name) as  
Sr Director (title) (Attach Power of Attorney)  
of Select Water Solutions, LLC  
(name of party on behalf of whom instrument is executed).

[Signature]  
(Signature of notarial officer)

(seal)  
My commission expires: 4-28-2026



2025 SEP -9 AM 10:13

SWD-251-1-R

---

---

## ATTACHMENT B

---

---

District I  
1625 N. French Dr., Hobbs, NM 88240  
District II  
811 S. First St., Artesia, NM 88210  
District III  
1000 Rio Brazos Road, Aztec, NM 87410  
District IV  
1220 S. St. Francis Dr., Santa Fe, NM 87505

HOBBS OCD  
State of New Mexico  
Energy Minerals and Natural Resources  
Oil Conservation Division  
1220 South St. Francis Dr.  
Santa Fe, NM 87505

HOBBS OCD

Form C-141  
Revised August 8, 2011

JUN 28 2013

JUN 28 2013  
Submit to appropriate District Office in accordance with 19.15.29 NMAC.

RECEIVED

RECEIVED

### Release Notification and Corrective Action

#### OPERATOR

Initial Report  Final Report

Name of Company Basic Energy Services L.P.	Contact David H. Alvarado
Address P.O. Box 20 Midland TX 79702	Telephone No. 575.513.1238
Facility Name State No # 1	Facility Type SWD

Surface Owner NMSLO	Mineral Owner State NM	API No. 30-025-28468
---------------------	------------------------	----------------------

#### LOCATION OF RELEASE

Unit Letter E	Section 7	Township 19S	Range 36E	Feet from the 1980	North/South Line NORTH	Feet from the 660	East/West Line WEST	County LEA
------------------	--------------	-----------------	--------------	-----------------------	---------------------------	----------------------	------------------------	---------------

Latitude 32° 40' 36.688" N Longitude 103° 24' 0.029" W

#### NATURE OF RELEASE

Type of Release PW WITH SULFATED WATER	Volume of Release 219.91 bbls	Volume Recovered 210 bbls
Source of Release	Date and Hour of Occurrence	Date and Hour of Discovery <i>SEE BELOW</i>
Was Immediate Notice Given? <input type="checkbox"/> Yes <input type="checkbox"/> No <input type="checkbox"/> Not Required	If YES, To Whom? NM BES Safety Coordinator, VP, BES Environmental, NMOCD	<i>JARL 7/1/13</i>
By Whom? David Alvarado	Date and Hour 6/28/13 12:30 AM	OCD 8:00AM
Was a Watercourse Reached? <input type="checkbox"/> Yes <input checked="" type="checkbox"/> No	If YES, Volume Impacting the Watercourse. No all fluids remained on berm location.	

If a Watercourse was Impacted, Describe Fully.\*

No Impact Occurred

*DTW = 30'*

Describe Cause of Problem and Remedial Action Taken.\*

Failure of connection above Master Valve took place. Low PSI automation shut system down and notified. Dispatched man arrived in 20 min to shut Master valve in. Called in for 2 Vac. Trucks completed task at 6:30 am reported 210 bbls recovered.

Describe Area Affected and Cleanup Action Taken.\*

140' x 210' Called in for 2 Vac. Trucks completed task at 6:30 am reported 210 bbls recovered. Blade headed to location to roll impacted area then gather to remove to proper facility. Bring in powder material to spread over impacted area.

I hereby certify that the information given above is true and complete to the best of my knowledge and understand that pursuant to NMOCD rules and regulations all operators are required to report and/or file certain release notifications and perform corrective actions for releases which may endanger public health or the environment. The acceptance of a C-141 report by the NMOCD marked as "Final Report" does not relieve the operator of liability should their operations have failed to adequately investigate and remediate contamination that pose a threat to ground water, surface water, human health or the environment. In addition, NMOCD acceptance of a C-141 report does not relieve the operator of responsibility for compliance with any other federal, state, or local laws and/or regulations.

Signature: *David H Alvarado*  
Printed Name: David H Alvarado

#### OIL CONSERVATION DIVISION

Approved by Environmental Specialist: *Jeffrey Seking*  
Environmental Specialist

Title: SENM F/S Mgr.

Approval Date: *7/1/13*

Expiration Date: *9/2/13*

E-mail Address: david.alvarado@basicenergyservices.com

Conditions of Approval: *DELINATE AND REMEDIATE PER OCD GUIDE-*

Attached

Date: 6/28/13 Phone: 575.513.1238

*IRP-7-13-2931*

\* Attach Additional Sheets If Necessary

*LINES, SUBMIT FINAL C-141 BY 9/2/13*

HOBBS OCD

JUN 28 2013

**Basic Energy Services**  
*Spill/Environmental Damage Report*

RECEIVED

<b>Date:</b>	28-Jun-13	<b>Area/Location:</b>	1306 / 206 / Artesia NM
<b>Type of Fluid Spilled:</b>	PW w/ Iron Sulfate	<b>Estimated Amount of Fluid Spilled:</b>	219 bbls
<b>Customer:</b>	Basic Energy Services L.P.	<b>Lease and Well #:</b>	State NO # 1
<b>Brief description of what happened:</b>			
Connection failure above Master valve occurred at around 12:05AM MST			
Automation shut system down & notified us. We had a man on location in 20 min. to shut master valve in.			
<b>What remedial action was taken to clean up spill and estimated cost to remediate:</b>			
Two vac trk. Were dispatched to location all authority's were notified .			
Recovered 210 bbls of estimated 219 bbls that was released.			
Blade headed to location to roll location material will be gathered and hauled off to proper facility.			
Cost for 2 vac trks 6 hours of trucking, Blade 3 hours, R 360, Material for powder covering			
<b>What agencies were involved in the spill (EPA, TNRCC, RRC, OCD):</b>			
NMOCD			
<b>What preventative action has been taken to prevent reoccurrence:</b>			
System worked accordingly as designed. Will change out all connections every six months above Master valve.			
Inspection of connections every Quarter and replace any connection needed if visual sign dictates.			
<b>Supervisor in charge of clean up:</b>	Dick Pena		
<b>Area Manager over location:</b>	David H. Alvarado		
<b>Safety Coordinator for area:</b>	Wesley Sullivan		

Revised 03-18-2010



# OCD Permitting

Home > Searches > Incidents > Incident Details

## NGRL1318237822 2013 MAJOR A SWS @ 30-025-28468

### General Incident Information

Well: [30-025-28468] STATE NO #001  
 Facility:  
 Operator: [246368] BASIC ENERGY SERVICES, LP  
 Status: Active  
 Stage: Initial C-141 Approved, Pending submission of Site Characterization / Remediation Plan OR Remediation Closure Report from the operator  
 Type: Produced Water Release **Severity:**  
 Incident Location: E-07-19S-36E Lot: 2 1980 FNL 660 FWL  
 Lat/Long: 32.6768608,-103.3999939 NAD83  
 District: Hobbs **County:** Lea (25)  
 Surface Owner: State

- Quic
- [Gene](#)
- [Mater](#)
- [Event](#)
- [Order](#)
- [Action](#)
- Assoc**
- [Facilit](#)
- [Incide](#)
- [Well f](#)
- New**
- [New J](#)
- [New J](#)
- [New J](#)
- [New J](#)
- [New J](#)

### Severity Indicators

Resulted In Fire:  **Resulted In Injury:**   
 Endangered Public Health:  **Will or Has Reached Watercourse:**   
 Fresh Water Contamination:  **Property Or Environmental Damage:**

### Notes

Source of Referral: Industry Rep **Action / Escalation:**

### Contact Details

Contact Name: **Contact Title:**

### Event Dates

Date of Discovery: 06/28/2013 **Initial C-141 Report Due:** 7/15/2013  
**Remediation Closure Report Due:** 11/13/2018

### Incident Dates

#### 19.15.29 NMAC - RELEASES

Type	Action	Received	Denied	Approved
Remediation Closure Report Extension		08/15/2018		08/15/2018
Initial C-141 Report		06/28/2013		06/28/2013
Notification		06/28/2013		06/28/2013

#### 19.15.30 NMAC - REMEDIATION

Type	Action	Received	Denied	Approved
------	--------	----------	--------	----------



### Analysis of Vented and/or Flared Natural Gas

SIGN-IN HELP

Incidents Found

Searches Operator Data Hearing Fee Application

#### Incident Materials

Cause	Source	Material	Volume			Units
			Unk.	Released	Recovered	
Corrosion	Valve	Produced Water	<input type="checkbox"/>	219	210	9 BBL
The concentration of dissolved chloride in the produced water >10,000 mg/l: <input type="checkbox"/> Yes <input checked="" type="checkbox"/> No						

#### Incident Events

Date	Detail
07/01/2013	Initial C-141 - 1RP-7-13-2931 - Failure of connection above Master Valve took place. Low PSI automation shut system down and notified. ? Dispatched man arrived in 20 mins to shut Master Valve in . Called in for 2 Vac. Trucks completed task at 6:30 am reported 210 bbls recovered. 140' x 210'. Blade headed to location to roll impacted area then gather to remove to proper facility. Bring in powder material to spread over impacted area. Instructed to delin and remediate per OCD guidelines.

#### Incident Severity

Major release as defined by 19.15.29.7(A) NMAC?  Yes  No

From paragraph A. "Major release" determine using:  
(1) an unauthorized release of a volume, excluding gases, of 25 barrels or more.

#### Incident Corrective Actions

- No initial response data was found for this incident.
- No site characterization data was found for this incident.
- No remediation plan data was found for this incident.
- No active remediation deferral request was found for this incident.
- No remediation closure report data was found for this incident.
- No reclamation report data was found for this incident.
- No re-vegetation report data was found for this incident.

#### Orders

**1RP-2931-0**

Applicant: [\[246368\]](#) BASIC ENERGY SERVICES, LP

Contact: David H. Alvarado

Reviewer: Geoffrey Leking

Approved By: SLO

Issuing Office: Hobbs

#### Processing Dates

Received: 06/28/2013

Approved: 06/28/2013

Expiration: 09/02/2013

Ordered: 06/28/2013

Denied:

Cancelled:



SIGN-IN HELP

Searches

Operator Data

Hearing Fee Application

New Mexico Energy, Minerals and Natural Resources Department | Copyright 2012  
1220 South St. Francis Drive | Santa Fe, NM 87505 | P: (505) 476-3200 | F: (505) 476-3220



[EMNRD Home](#) [OCD Main Page](#) [OCD Rules](#) [Help](#)

---


---

ATTACHMENT C


---

---

Date: 10/31/1997


State NO #1 SWD 

Date: 8/22/2006

State NO #1 SWD 



Date: 5/8/2009

State NO #1 SWD 



Date: 6/16/2010

State NO #1 SWD



Date: 11/2/2017

State NO #1 SWD



Date: 12/1/2019



Date: 12/10/2023



Google Earth

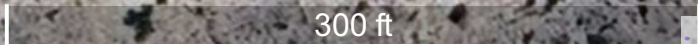


300 ft

Date: 6/11/2024

Google Earth

Imagery: 2/10/2026 3:30:04 PM



---

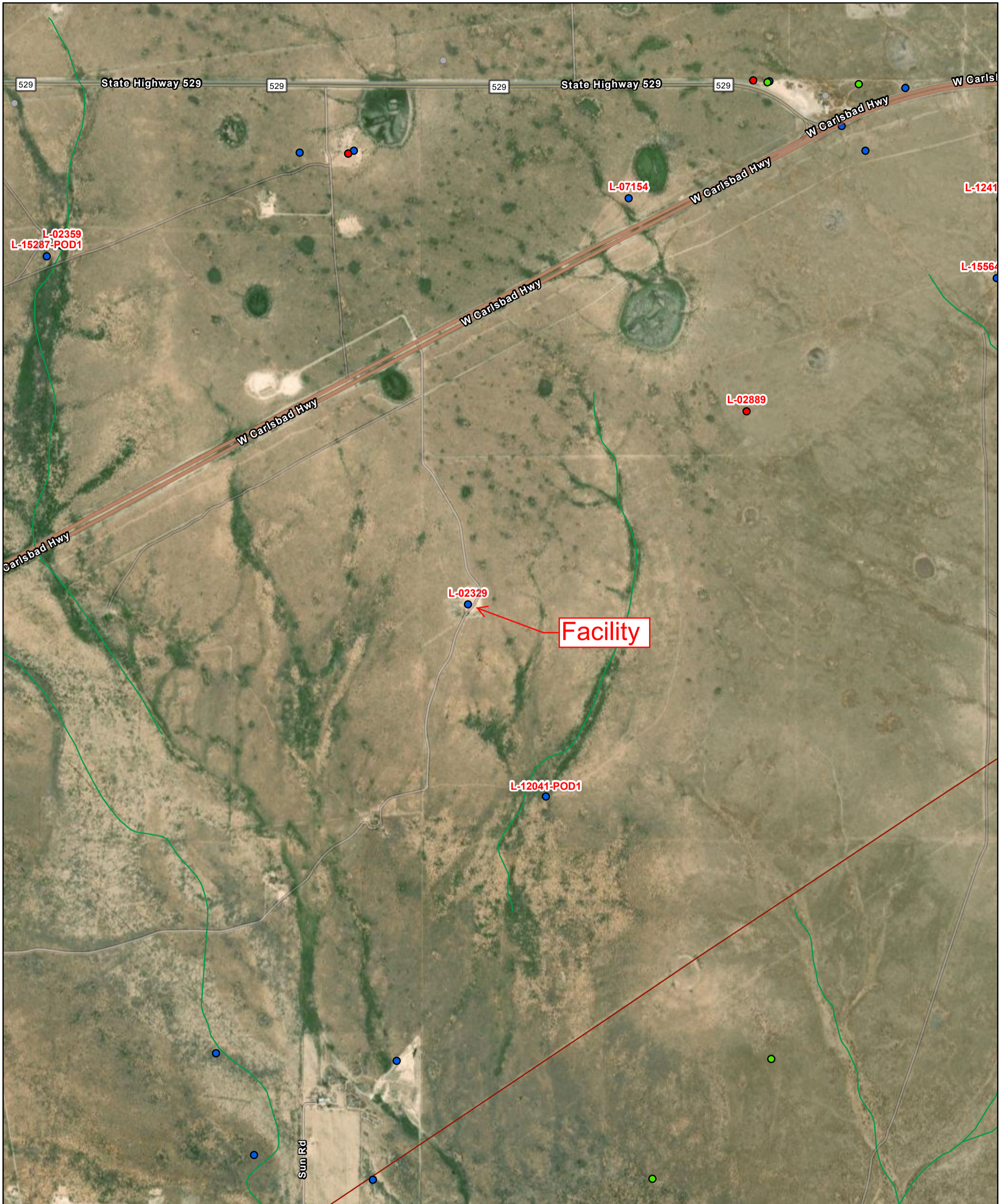
---

ATTACHMENT D

---

---

# OSE POD Location Map



7/3/2025, 11:01:58 AM

GIS WATERS PODs

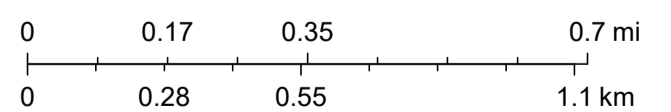
- Active
- Pending

● Plugged

NHD Flowlines

- Pipeline
- Stream River

1:18,056



Sources: Esri, TomTom, Garmin, FAO, NOAA, USGS, (c) OpenStreetMap contributors, and the GIS User Community, Maxar



### APPROVAL OF THE STATE ENGINEER

Number of this permit L-2329 Date received corrected \_\_\_\_\_  
 Recorded in Book LC-9 Publication of notice ordered \_\_\_\_\_  
 Page 2328 Name of paper \_\_\_\_\_  
 Application received September 3, 1953. Affidavit of publication filed \_\_\_\_\_  
 Date returned for correction \_\_\_\_\_ Date of approval October 23, 1953.

This application is approved for 3 acre feet of water  
 subject to all prior valid and existing rights to the use of the waters of said underground source and provided that

the applicant complies with all rules and regulations of the State Engineer pertaining to the drilling of wells.  
Well to be drilled by drilling contractor licensed in the State of New Mexico.  
Diameter of well not to exceed 7 inches. Appropriation of water to be limited  
at all times to 3 acre feet per annum for domestic and oil well drilling purposes.  
Well to be plugged upon completion of oil well drilling operations or before  
September 11, 1954.

Works shall be completed and proofs filed on or before March 11, 1954.

Water shall be applied to beneficial use and proofs filed on or before \_\_\_\_\_

This is to certify that I have examined the above application for permit to appropriate the underground waters  
 of the State of New Mexico and hereby approve the same subject to the foregoing provisions and conditions.

Witness my hand and seal this 23rd day of October, A. D., 19 53.

[Signature]  
 Assistant State Engineer

**LOCATE WELL AND ACREAGE TO BE IRRIGATED AS ACCURATELY AS POSSIBLE ON FOLLOWING PLAT:**

Section (s) 7 Township 19 S Range 36 E N.M.P.M.


**INSTRUCTIONS**

This form shall be executed, preferably typewritten, in triplicate and shall be accompanied by a filing fee of \$5.00. Each of triplicate copies must be properly signed and attested.

A separate application for permit must be filed for each well used.

Secs. 1-4—Fill out all blanks fully and accurately.

Sec. 5—Irrigation use shall be stated in feet depth or acre feet of water per acre to be applied on the land. If for domestic, municipal, or other purposes, state total quantity in acre feet to be used annually. Domestic use may include the irrigation of not more than one acre of lawn and garden for noncommercial use.

Sec. 6—Describe only the lands to be irrigated. If on unsurveyed lands describe by legal subdivision "as projected" from the nearest government survey corners, or describe by metes and bounds and tie survey to some permanent, easily located natural object.

Sec. 7—Estimate time reasonably required to commence and to complete project.

Sec. 8—If lands are irrigated from any other source, explain in this section. Give any other data necessary to fully describe water right sought.

If additional space is necessary, use a separate sheet or sheets and attach securely hereto.

202637

WR-21

Important—Read Instructions On Back Before Filling Out This Application

1958 JUN 11 AM 9:32 STATE ENGINEER OFFICE SANTA FE, N.M.

APPLICATION FOR EXTENSION OF TIME

In Which to Complete an Appropriation of Underground Water

Book No. LC-9 Permit No. L-2329

Before the State Engineer Santa Fe, New Mexico. Received June 3, 1958

The undersigned, Gackle Drilling Company, Inc. of Hobbs, County of Lea

State, of New Mexico, hereby applies for an extension of time in which to complete the works under (complete the works, apply water to beneficial use)

Permit No. L-2329 Approved October 23, 1953

The prevailing dates which have been set by the State Engineer are as follows: Well shall be plugged and plugging record filed on or before September 11, 1958. Apply Water to Beneficial Use on or before 19...

The period of time fixed by the above limiting dates has proved to be insufficient and additional time is requested for the following reasons (state reasons in detail and if desirable or necessary, submit affidavits, photographs, etc., as evidence in support of statement): To cover delinquency in filing plugging record.

The State Engineer is hereby requested to extend the time previously granted by extending the above limiting dates to read as follows: Well shall be plugged and plugging record filed on or before September 11, 1959. Apply Water to Beneficial Use on or before 19...

I, Gackle Drilling Company, Inc., being first duly sworn, upon my oath, depose and say that I am the sole owner and holder (sole, partial, agent for, etc.)

of said Permit No. L-2329, that I have read the foregoing statements and that the same are true to the best of my knowledge and belief.

Gackle Drilling Company, Inc. Permittee by [Signature]

Subscribed and sworn to before me this 31 day of May, A. D., 1958 [Signature] Notary Public.

My commission COMMISSION EXPIRES APRIL 2, 1961

FILED JUN 3 - 1958 OFFICE GROUND WATER SUPERVISOR



202637

1958 JUN 12 AM 9:32  
STATE ENGINEER OFFICE  
SANTA FE, N.M.

WR-21

Important—Read Instructions On Back Before Filling Out This Application

### APPLICATION FOR EXTENSION OF TIME

In Which to Complete an Appropriation of Underground Water

Book No. LC-9 Permit No. L-2329  
Before the State Engineer Received June 3, 1958  
Santa Fe, New Mexico.

The undersigned, Gackle Drilling Company, Inc.  
of Hobbs, County of Lea  
State of New Mexico, hereby applies for an extension of time in  
which to complete the works under  
(complete the works, apply water to beneficial use)

Permit No. L-2329 Approved October 23, 1953

The prevailing dates which have been set by the State Engineer are as follows:  
Well shall be plugged and plugging record filed on or before September 11, 1957  
~~Complete the works on or before~~  
Apply Water to Beneficial Use on or before 19.....

The period of time fixed by the above limiting dates has proved to be insufficient and additional time is requested for the following reasons (state reasons in detail and if desirable or necessary, submit affidavits, photographs, etc., as evidence in support of statement):  
To cover delinquency in filing plugging record.

The State Engineer is hereby requested to extend the time previously granted by extending the above limiting dates to read as follows:  
Well shall be plugged and plugging record filed on or before September 11, 1958  
~~Complete the works on or before~~  
Apply Water to Beneficial Use on or before 19.....

I, Gackle Drilling Company, Inc., being first duly sworn, upon my oath, depose and say that I am the sole owner and holder of said Permit No. L-2329, that I have read the foregoing statements and that the same are true to the best of my knowledge and belief.

Gackle Drilling Company, Inc. Permittee  
by *[Signature]*

Subscribed and sworn to before me this 31 day of May, A. D., 1958

MY COMMISSION EXPIRES APRIL 2, 1961  
*[Signature]*  
Notary Public.

My commission expires  
**FILED**  
JUN 3 - 1958  
OFFICE  
GROUND WATER SUPERVISOR

**EXTENSION OF TIME**  
**Approval of the State Engineer**

File No. of Application L-2329 Recorded in Book LC-9

Date of Receipt June 3, 1958 Extension of Time Granted June 10, 1958

This is to certify that I have examined the above application for additional time in which to complete an appropriation of water and, after considering the merits thereof, do hereby grant to the permittee,

Gackle Drilling Company, Inc.

an extension of time to the following dates:

Well shall be plugged and plugging record filed on or before September 11, 1958

Apply Water to Beneficial Use on or before \_\_\_\_\_, 19\_\_\_\_

Witness my hand and official seal this 10th day of June A. D., 19 58

S. E. Reynolds

State Engineer

By: Fred H. Henninghausen

Fred H. Henninghausen  
District Supervisor

**INSTRUCTIONS**

**File application in triplicate accompanied by a fee of \$5.00**

Due diligence shall be exercised by the applicant at all times in order to complete his appropriation, change, amendment, etc., within the time limits set in the permit. Should conditions unavoidably delay the work, however, the State Engineer may, upon request of the applicant grant reasonable extensions of time as provided by statute, which extensions, in general, are granted for more than one year for any single extension.

In addition to the statements appearing in this form, applicant may submit affidavits or any other pertinent evidence in support of his application. No extension of time shall be granted unless sufficient proof is shown to justify such extension.

NOTE: If additional space is required, use a separate sheet of paper and attach securely hereto:

20 20 37

WR-21

Important—Read Instructions On Back Before Filling Out This Application

1958 JUN 23 AM 9:32  
STATE ENGINEER OFFICE  
SANTA FE, N. M.

### APPLICATION FOR EXTENSION OF TIME

#### In Which to Complete an Appropriation of Underground Water

Book No. LC-9 Permit No. L-2329

Before the State Engineer Santa Fe, New Mexico. Received June 3, 1958

The undersigned, Gackle Drilling Company, Inc. of Hobbs, County of Lea

State of New Mexico, hereby applies for an extension of time in

which to complete the works under (complete the works, apply water to beneficial use)

Permit No. L-2329 Approved October 23, 1953

The prevailing dates which have been set by the State Engineer are as follows:

Well shall be plugged and plugging record filed on or before September 11, 1956

Apply Water to Beneficial Use on or before 1956

The period of time fixed by the above limiting dates has proved to be insufficient and additional time is requested for the following reasons (state reasons in detail and if desirable or necessary, submit affidavits, photographs, etc., as evidence in support of statement):

To cover delinquency in filing plugging record

The State Engineer is hereby requested to extend the time previously granted by extending the above limiting dates to read as follows:

Well shall be plugged and plugging record filed on or before September 11, 1957

Apply Water to Beneficial Use on or before 1957

I, Gackle Drilling Company, Inc., being first duly sworn, upon my oath, depose and say that I am the sole owner and holder (sole, partial, agent for, etc.)

of said Permit No. L-2329, that I have read the foregoing statements and that the same are true to the best of my knowledge and belief.

Gackle Drilling Company, Inc. Permittee

by *Thomas Linn*

Subscribed and sworn to before me this 31 day of May, A. D., 1958

*E. F. Doaker*

MY COMMISSION EXPIRES APRIL 2, 1961

Notary Public.

My commission expires  
**FILED**  
JUN 3- 1958  
OFFICE  
GROUND WATER SUPERVISOR

**EXTENSION OF TIME**  
**Approval of the State Engineer**

File No. of Application ..... L-2329 ..... Recorded in Book ..... LC-9 .....

Date of Receipt ..... June 3, 1958 ..... Extension of Time Granted ..... June 10, 1958 .....

This is to certify that I have examined the above application for additional time in which to complete an appropriation of water and, after considering the merits thereof, do hereby grant to the permittee,

Gackle Drilling Company, Inc.

an extension of time to the following dates:

Well shall be plugged and plugging record filed on or before September 11, 1957

Apply Water to Beneficial Use on or before ..... 19 .....

Witness my hand and official seal this 10th day of June A. D., 1958.

S. E. Reynolds

State Engineer

By:

Fred H. Henninghausen  
Fred H. Henninghausen  
District Supervisor

**INSTRUCTIONS**

**File application in triplicate accompanied by a fee of \$5.00**

Due diligence shall be exercised by the applicant at all times in order to complete his appropriation, change, amendment, etc., within the time limits set in the permit. Should conditions unavoidably delay the work, however, the State Engineer may, upon request of the applicant grant reasonable extensions of time as provided by statute, which extensions, in general, are granted for more than one year for any single extension.

In addition to the statements appearing in this form, applicant may submit affidavits or any other pertinent evidence in support of his application. No extension of time shall be granted unless sufficient proof is shown to justify such extension.

NOTE: If additional space is required, use a separate sheet of paper and attach securely hereto.

WR-21

Important—Read Instructions On Back Before Filling Out This Application

APPLICATION FOR EXTENSION OF TIME

In Which to Complete an Appropriation of Underground Water

1958 JUN 13 AM 9:32 STATE ENGINEER OFFICE SANTA FE N.M.

Book No. LC-9 Permit No. L-2329

Before the State Engineer Santa Fe, New Mexico. Received June 3, 1958

The undersigned, Gackle Drilling Company, Inc. of Hobbs, County of Lea

State of New Mexico, hereby applies for an extension of time in

which to complete the works under (complete the works, apply water to beneficial use)

Permit No. L-2329 Approved October 23, 1953

The prevailing dates which have been set by the State Engineer are as follows:

Well shall be plugged and plugging record filed on or before September 11, 1955

Apply Water to Beneficial Use on or before 1955

The period of time fixed by the above limiting dates has proved to be insufficient and additional time is requested for the following reasons (state reasons in detail and if desirable or necessary, submit affidavits, photographs, etc., as evidence in support of statement):

To cover delinquency in filing plugging record.

[Redacted signature area]

The State Engineer is hereby requested to extend the time previously granted by extending the above limiting dates to read as follows:

Well shall be plugged and plugging record filed on or before September 11, 1956

Apply Water to Beneficial Use on or before 1956

I, Gackle Drilling Company, Inc., being first duly sworn, upon my oath, depose and say that I am the sole owner and holder (sole, partial, agent for, etc.)

of said Permit No. L-2329, that I have read the foregoing statements and that the same are true to the best of my knowledge and belief.

Gackle Drilling Company, Inc. Permittee by [Signature]

Subscribed and sworn to before me this 31 day of May, A. D., 1958

[Signature] Notary Public.

MY COMMISSION EXPIRES APRIL 2, 1961

My commission expires

FILED

JUN 3 - 1958

OFFICE

**EXTENSION OF TIME**  
**Approval of the State Engineer**

File No. of Application L-2329 Recorded in Book LC-9

Date of Receipt June 3, 1958 Extension of Time Granted June 10, 1958

This is to certify that I have examined the above application for additional time in which to complete an appropriation of water and, after considering the merits thereof, do hereby grant to the permittee,

Gackle Drilling Company, Inc.

an extension of time to the following dates:

Well shall be plugged and plugging record filed on or before September 11, 1956

Apply Water to Beneficial Use on or before 19

Witness my hand and official seal this 10th day of June A. D., 19 58

S. E. Reynolds

State Engineer

*[Handwritten Signature]*  
Fred H. Henninghausen  
District Supervisor

**INSTRUCTIONS**

**File application in triplicate accompanied by a fee of \$5.00**

Due diligence shall be exercised by the applicant at all times in order to complete his appropriation, change, amendment, etc., within the time limits set in the permit. Should conditions unavoidably delay the work, however, the State Engineer may, upon request of the applicant grant reasonable extensions of time as provided by statute, which extensions, in general, are granted for more than one year for any single extension.

In addition to the statements appearing in this form, applicant may submit affidavits or any other pertinent evidence in support of his application. No extension of time shall be granted unless sufficient proof is shown to justify such extension.

NOTE: If additional space is required, use a separate sheet of paper and attach securely hereto.

202637

WR-21

Important—Read Instructions On Back Before Filling Out This Application

APPLICATION FOR EXTENSION OF TIME

In Which to Complete an Appropriation of Underground Water

1958 JUN 15 AM 9:32 STATE ENGINEER OFFICE SANTA FE, N.M.

Book No. LC-9 Permit No. L-2329

Before the State Engineer Santa Fe, New Mexico. Received May 16, 1958

The undersigned, Gackle Drilling Company, Inc. of Hobbs, New Mexico, County of Lea State of New Mexico hereby applies for an extension of time in which to plug well (complete the works, apply water to beneficial use) under Permit No. L-2329 Approved 19...

The prevailing dates which have been set by the State Engineer are as follows: Complete the Works on or before September 2, 1953 Apply Water to Beneficial Use on or before March 11, 1954

The period of time fixed by the above limiting dates has proved to be insufficient and additional time is requested for the following reasons (state reasons in detail and if desirable or necessary, submit affidavits, photographs, etc., as evidence in support of statement):

To cover delinquency in filing plugging record: Table with 2 columns: Period (March 11, 1954 - March 11, 1955) and Amount (1.00). Total 5.00.

The State Engineer is hereby requested to extend the time previously granted by extending the above limiting dates to read as follows:

Well shall be plugged and plugging record filed on or before September 11, 1955 Apply Water to Beneficial Use on or before 19...

I, Gackle Drilling Company, Inc., being first duly sworn, upon my oath, depose and say that I am the Sole owner and holder (sole, partial, agent for, etc.)

of said Permit No. L-2329, that I have read the foregoing statements and that the same are true to the best of my knowledge and belief.

Gackle Drilling Co, Inc Permittee by [Signature]

Subscribed and sworn to before me this 14 day of May, A. D., 1958

[Signature] Notary Public. MY COMMISSION EXPIRES APRIL 3, 1961

My commission expires

FILED 13268 MAY 16 1958 OFFICE GROUND WATER SUPERVISOR ROSWELL, NEW MEXICO

**EXTENSION OF TIME**  
**Approval of the State Engineer**

File No. of Application ..... L-2329 ..... Recorded in Book ..... LC-9 .....

Date of Receipt ..... May 16, 1958 ..... Extension of Time Granted June 10, 1958 .....

This is to certify that I have examined the above application for additional time in which to complete an appropriation of water and, after considering the merits thereof, do hereby grant to the permittee,

..... Gackle Drilling Company, Inc. ....

an extension of time to the following dates:

Well shall be plugged and plugging record filed on or before September 11, 1955  
~~Complete the Work on or before~~ ....., 19 .....

Apply Water to Beneficial Use on or before ....., 19 .....

Witness my hand and official seal this ..... 10th ..... day of ..... June ..... A. D., 19 58 .....

S. E. Reynolds

State Engineer

By:

*Fred H. Henninghausen*  
Fred H. Henninghausen  
District Supervisor

**INSTRUCTIONS**


**File application in triplicate accompanied by a fee of \$5.00**

Due diligence shall be exercised by the applicant at all times in order to complete his appropriation, change, amendment, etc., within the time limits set in the permit. Should conditions unavoidably delay the work, however, the State Engineer may, upon request of the applicant grant reasonable extensions of time as provided by statute, which extensions, in general, are granted for more than one year for any single extension.

In addition to the statements appearing in this form, applicant may submit affidavits or any other pertinent evidence in support of his application. No extension of time shall be granted unless sufficient proof is shown to justify such extension.

NOTE: If additional space is required, use a separate sheet of paper and attach securely hereto.


# Water Right Summary

  
[get image list](#)

<b>WR File Number:</b>	L 02329	<b>Subbasin:</b>	L	<b>Cross Reference:</b>	
<b>Primary Purpose:</b>	PRO 72-12-1 PROSPECTING OR DEVELOPMENT OF NATURAL RESOURCE				
<b>Primary Status:</b>	PMT Permit				
<b>Total Acres:</b>		<b>Subfile:</b>		<b>Header:</b>	
<b>Total Diversion:</b>	0.000	<b>Cause/Case:</b>			
<b>Owner:</b>	GACKLE DRILLING COMPANY	<b>Owner Class:</b>	O w n e r		

## Documents on File

(acre-feet per

Transaction Images	Trn #	Doc	File/Act	Status 1	Status 2	Transaction Desc.	From/To	Acres	Diversion	Co
 <a href="#">_get images</a>	<a href="#">487844</a>	72121	1953-10-23	PMT	LOG	L 02329	T		3.000	

## Current Points of Diversion

POD Number	Well Tag	Source	Q64	Q16	Q4	Sec	Tws	Rng	X	Y	Map	Other Location Desc
<a href="#">L 02329</a>		Shallow		SW	NW	07	19S	36E	650017.0	3616588.0 *		

\* UTM location was derived from PLSS - see Help

The data is furnished by the NMOSE/ISC and is accepted by the recipient with the expressed understanding that the OSE/ISC make no warranties, expressed or implied, concerning the accuracy, completeness, reliability, usability, or suitability for any particular purpose of the data.

7/3/25 9:42 AM MST


Water Rights Summary

©2024 New Mexico Office of the State Engineer, All Rights Reserved. | [Disclaimer](#) | [Contact Us](#) | [Help](#) | [Home](#) |

# Point of Diversion Summary

quarters are 1=NW 2=NE 3=SW 4=SE  
quarters are smallest to largest

NAD83 UTM in meters

Well Tag	POD Nbr	Q64	Q16	Q4	Sec	Tws	Rng	X	Y	Map
	L 02329		SW	NW	07	19S	36E	650017.0	3616588.0 *	

\* UTM location was derived from PLSS - see Help

**Driller License:** 111      **Driller Company:** BURKE, EDWARD B.

**Driller Name:**

**Drill Start Date:** 1953-08-27      **Drill Finish Date:** 1953-08-28      **Plug Date:**

**Log File Date:** 1953-09-03      **PCW Rcv Date:**      **Source:** Shallow

**Pump Type:**      **Pipe Discharge Size:**      **Estimated Yield:** 7

**Casing Size:**      **Depth Well:** 112      **Depth Water:** 50

## Water Bearing Stratifications:

Top	Bottom	Description
76	110	Sandstone/Gravel/Conglomerate

## Casing Perforations:

Top	Bottom
60	105

The data is furnished by the NMOSE/ISC and is accepted by the recipient with the expressed understanding that the OSE/ISC make no warranties, expressed or implied, concerning the accuracy, completeness, reliability, usability, or suitability for any particular purpose of the data.

7/3/25 10:04 AM MST

Point of Diversion Summary

©2024 New Mexico Office of the State Engineer, All Rights Reserved. | [Disclaimer](#) | [Contact Us](#) | [Help](#) | [Home](#) |

202637

487844

SANTA FE

(This form is to be executed in triplicate)

# WELL RECORD

Date of Receipt .....

Permit No. L-2329

Name of permittee, Gackle Drilling Co.

Street or P. O. .... City and State Hobbs, New Mexico

1. Well location and description: The Shallow well is located in SW  $\frac{1}{4}$ , NW  $\frac{1}{4}$  of Section 7, Township 19 S, Range 36 E; Elevation of top of casing above sea level, ..... feet; diameter of hole, 8 inches; total depth, 112 feet; depth to water upon completion, 50 feet; drilling was commenced August 27, 1953, and completed August 28 1953; name of drilling contractor Ed. B. Burke

Box 306; Address, Hobbs, New Mexico; Driller's License No. WD-111

2. Principal Water-bearing Strata:

	Depth in Feet		Thickness	Description of Water-bearing Formation
	From	To		
No. 1	<u>76</u>	<u>110</u>	<u>34</u>	<u>Water Sand</u>
No. 2				
No. 3				
No. 4				
No. 5				

1962 MAY 25 AM 8:16  
 STATE ENGINEER OFFICE  
 SANTA FE, N.M.

3. Casing Record:

Diameter in inches	Pounds per ft.	Threads per inch	Depth of Casing or Liner		Feet of Casing	Type of Shoe	Perforation	
			Top	Bottom			From	To
<u>6 5/8"</u>	<u>18</u>	<u>8</u>	<u>0</u>	<u>105</u>	<u>105</u>	<u>no</u>	<u>63</u>	<u>105</u>

4. If above construction replaces old well to be abandoned, give location:  $\frac{1}{4}$ ,  $\frac{1}{4}$ ,  $\frac{1}{4}$  of Section ....., Township ....., Range ....., name and address of plugging contractor, .....

date of plugging ....., 19.....; describe how well was plugged: .....

**FILED**  
 SEP 3 1953  
 ARTESIAN WELL SUPERVISOR  
 HOBBS, NEW MEXICO

L-2329

19.36.7.130

OWD



---

---

ATTACHMENT E

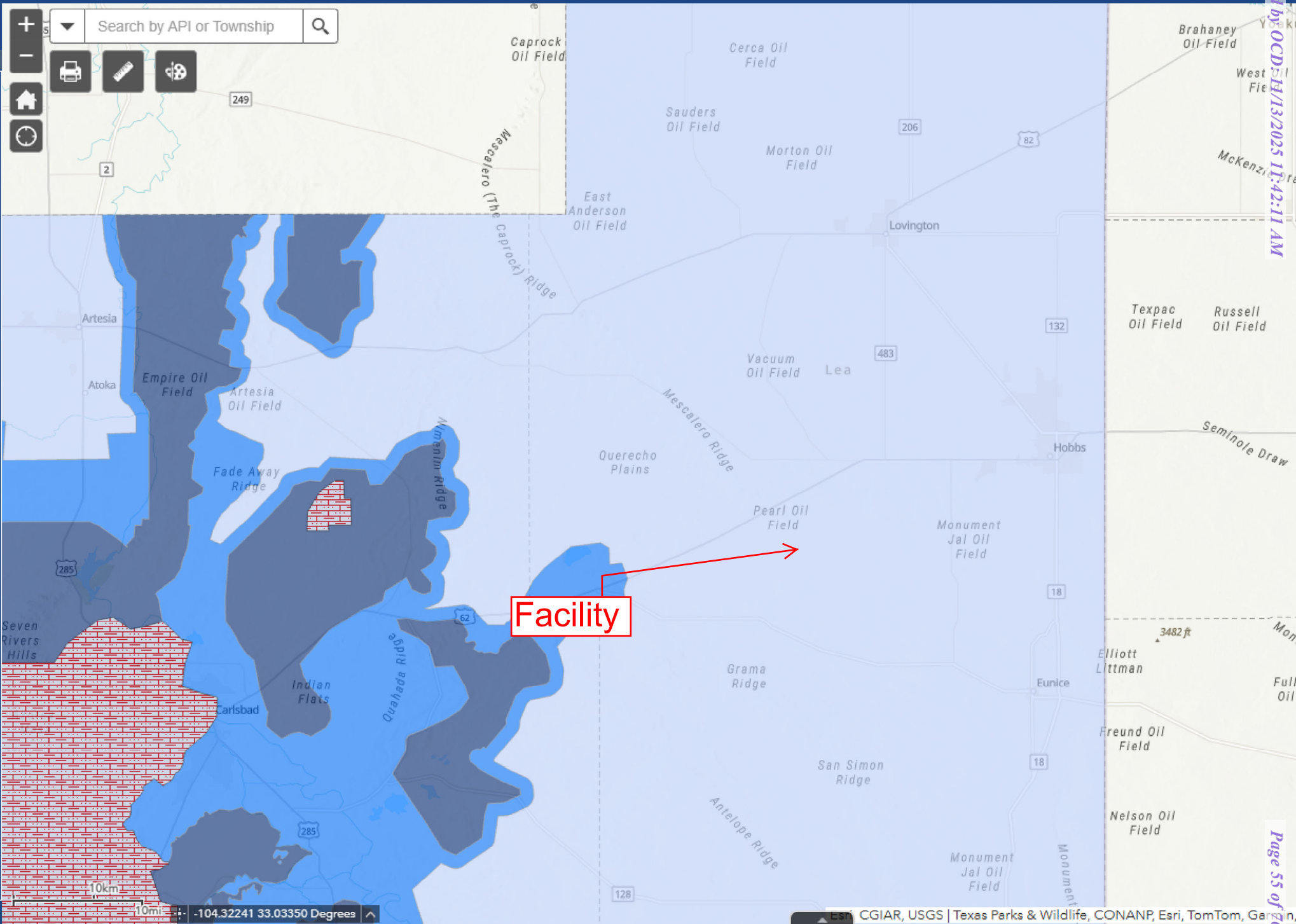
---

---

+ - Search by API or Township

🖨️ 📏 🌐

🏠 🕒



---

---

ATTACHMENT F

---

---

---

---

## ATTACHMENT F

---

---

NMAC §19.15.29.12.C.(4) provides specifications that would require the responsible party to treat the release as if it occurred less than 50 ft to ground water. Pursuant to this rule, the following distances between the facility and respective features were determined and are present below.

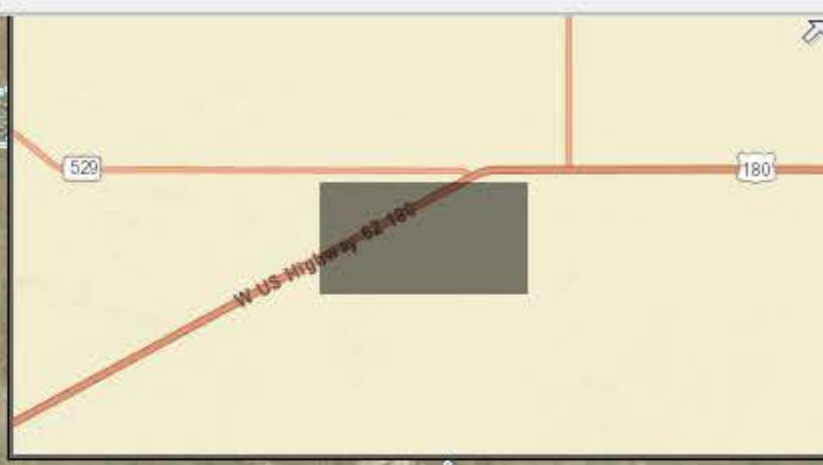
- A continuously flowing watercourse or any other significant watercourse - between 0.5 and 1 mile. According to NMAC §19.15.17.7, "Significant watercourse" is defined as *a watercourse with a defined bed and bank either named or identified by a dashed blue line on a USGS 7.5 minute quadrangle map or the next lower order tributary with a defined bed and bank of such watercourse*. There is a "riverine" habitat identified ~0.4 miles to the east based on the National Wetlands Inventory (NWI) database (ID#: R4SB3J). This feature was identified as "ephemeral" on the New Mexico OpenEnviroMap. This feature does not meet the continuously flowing metric, is not named, and is not considered "significant" as it is not identified on the USGS 7.5-minute topo map. According to NMAC §19.15.29.11.A.(4), *"The responsible party must determine the horizontal distance to the nearest significant watercourse as defined in Subsection P of 19.15.17.7 NMAC within a half mile of any horizontal boundary of the release."* The nearest named watercourse that might qualify as "significant" is Iron House Draw located between 0.5 and 1 miles southwest of the facility. As described, there does not appear to be a significant watercourse within a half mile of the release. NMAC §19.15.29.12.B.(4)(a)(i) specifies a responsible party would have to treat the release as if it occurred less than 50 ft to ground water if the release occurred within *"300 feet of any continuously flowing watercourse or any other significant watercourse."* As described, this is not the case.
- Any lakebed, sinkhole, or playa lake (measured from the ordinary high-water mark) - between 0.5 and 1 mile. Several "intermittent" lake/ponds were identified on the NWI mapper and New Mexico OpenEnviroMap between 0.5 and 1 miles north and east of the facility. NMAC §19.15.29.12.B.(4)(a)(ii) specifies a responsible party would have to treat the release as if it occurred less than 50 ft to ground water if the release occurred within *"200 feet of any lakebed, sinkhole or playa lake (measured from the ordinary high-water mark)."* As described, this is not the case.
- An occupied permanent residence, school, hospital, institution, or church - between 1 and 5 miles. Based on google earth, there is a residence ~4 miles to the northeast at 76 Squires Road. NMAC §19.15.29.12.B.(4)(b) specifies a responsible party would have to treat the release as if it occurred less than 50 ft to ground water if the release occurred within *"300 feet from an occupied permanent residence, school, hospital, institution or church."* As described, this is not the case.
- A spring or a private domestic fresh water well used by less than five households for domestic or stock watering purposes - between 0.5 and 1 mile. The closest POD labelled domestic/stock was ~0.6 miles south. This was identified as L-12041-POD1. It should be noted that an additional POD (L-02329) was identified at the State NO #1 SWD facility; however, this well was drilled in the 1950s and is no longer active. According to NMAC §19.15.29.11.A.(3), *"The responsible party must determine the horizontal distance from all known water sources within a half mile of the release including private and domestic water sources."* As described, there does not appear to be any known water sources within a half mile of the release. NMAC §19.15.29.12.B.(4)(c)(i) specifies a responsible party would have to treat the release as if it occurred less than 50 ft to ground water if the release occurred within *"500 feet of a spring or a private, domestic fresh water well used by less than five households for domestic or stock watering purposes."* As described, this is not the case.

- Any other fresh water well or spring - between 0.5 and 1 mile. As discussed above, the closest apparently active POD was identified ~0.6 miles to the south. NMAC §19.15.29.12.B.(4)(c)(ii) specifies a responsible party would have to treat the release as if it occurred less than 50 ft to ground water if the release occurred within “1000 feet of any fresh water well or spring.” As described, this is not the case.
- Incorporated municipal boundaries or a defined municipal fresh water well field – greater than 5 miles. According to the OpenEnviroMap, the nearest incorporated municipal boundary is Hobbs and the nearest census designated place is Monument. According to the OpenEnviroMap, the nearest active groundwater system well is over 5 miles to the east. NMAC §19.15.29.12.B.(4)(d) specifies a responsible party would have to treat the release as if it occurred less than 50 ft to ground water if the release occurred within “*incorporated municipal boundaries or within a defined municipal fresh water well field covered under a municipal ordinance adopted pursuant to Section 3-27-3 NMSA 1978 as amended, unless the municipality specifically approves.*” As described, this is not the case.
- A wetland - between 0.5 and 1 mile. The “intermittent” lake/ponds discussed above were identified on the NWI mapper, with the closest being a “Freshwater Emergent Wetland.” NMAC §19.15.29.12.B.(4)(e) specifies a responsible party would have to treat the release as if it occurred less than 50 ft to ground water if the release occurred within “300 feet of a wetland.” As described, this is not the case.
- A subsurface mine - greater than 5 miles. Based on the New Mexico Registered Mines GIS page, the closest mine facilities are ~25 miles southwest of the facility near Carlsbad. NMAC §19.15.29.12.B.(4)(f) specifies a responsible party would have to treat the release as if it occurred less than 50 ft to ground water if the release occurred within “*the area overlying a subsurface mine.*” As described, this is not the case.
- An (non-karst) unstable area – greater than 5 miles. Based on the OCD Oil and Gas Map, the closest recorded seismic activity was over 20 miles to the southwest. NMAC §19.15.29.12.B.(4)(g) specifies a responsible party would have to treat the release as if it occurred less than 50 ft to ground water if the release occurred within “*an unstable area.*” As described, this is not the case.
- Categorize the risk of this well / site being in a karst geology – low risk based on the OCD Oil and Gas Map. NMAC §19.15.29.12.B.(4)(g) specifies a responsible party would have to treat the release as if it occurred less than 50 ft to ground water if the release occurred within “*an unstable area.*” As described, this is not the case.
- A 100-year floodplain – greater than 5 miles. Based on the FEMA Flood Layer Viewer, the area within 5 miles in all directions is in “Zone D” (area of undermined flood hazard). NMAC §19.15.29.12.B.(4)(h) specifies a responsible party would have to treat the release as if it occurred less than 50 ft to ground water if the release occurred within “*a 100-year floodplain.*” As described, this is not the case.

Based on the evaluation of distances between the various features cited in NMAC §19.15.29.12.C.(4) and the facility, the responsible party is not required to treat the release as if it occurred less than 50 ft to ground water.

Legend Basemap Query 1:18,056

- ▶ Water Quality Stations
- ▶ Nonpoint Source Program
- ▶ Restoration Projects
- ▶ Impaired Waters 2024 IR FINAL
- ▶ Assessed Waters 2024 IR FINAL
- ▼ National Hydrography Dataset
- National Hydrography Dataset
- Points
  - Gaging Station
  - || Rapids
  - Spring/Seep
  - | Waterfall
  - Well
- Lines
  - Perennial Stream
  - Intermittent Stream
  - Ephemeral Stream
  - Canal/Ditch
  - Pipeline
  - Artificial Path
  - Connector
  - Underground Conduit
- Waterbodies
  - Perennial Lake
  - Intermittent Lake
  - Reservoir
  - Playa
  - Wetland
- Areas
  - Perennial Stream
  - Intermittent Stream
  - Ephemeral Stream
  - Wash
  - Canal/Ditch
  - Inundation Area
  - Dam



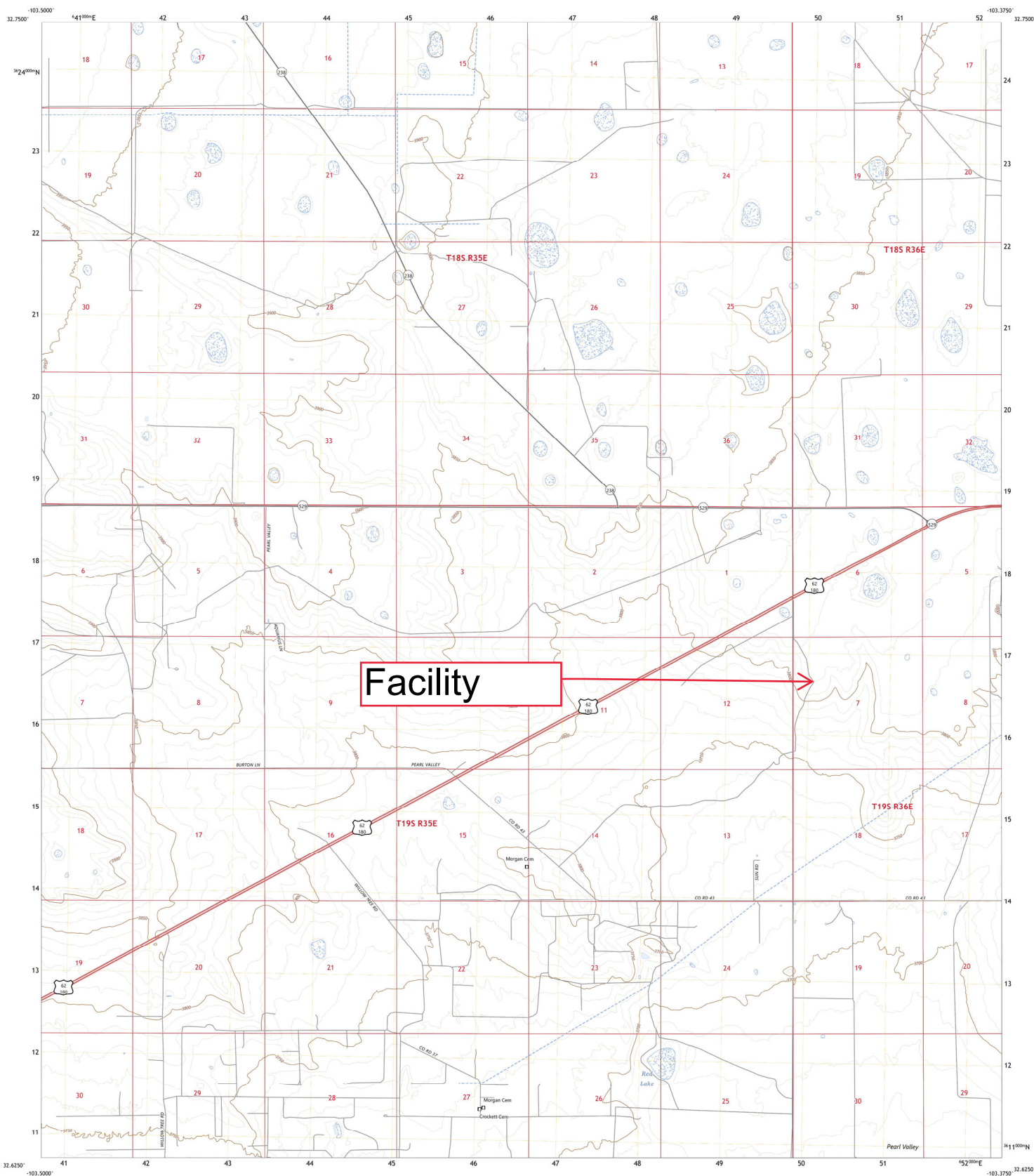
COVID Wastewater COVID-19 OSHA Data



U.S. DEPARTMENT OF THE INTERIOR  
U.S. GEOLOGICAL SURVEY



IRONHOUSE DRAW QUADRANGLE  
NEW MEXICO - LEA COUNTY  
7.5-MINUTE SERIES



Produced by the United States Geological Survey  
North American Datum of 1983 (NAD83)  
World Geodetic System of 1984 (WGS84) Projection and  
1000-meter grid/Universal Transverse Mercator, Zone 13S  
This map is not a legal document. Boundaries may be  
generalized for this map scale. Private lands within government  
reservations may not be shown. Obtain permission before  
entering private lands.



SCALE 1:24 000  
KILOMETERS  
METERS  
FEET  
MILES  
CONTOUR INTERVAL: 10 FEET  
NORTH AMERICAN DATUM OF 1983  
This map was produced to conform with the  
National Geospatial Program US Topo Product Standard.



ADJOINING QUADRANGLES

1	2	3
4	5	6
7	8	9

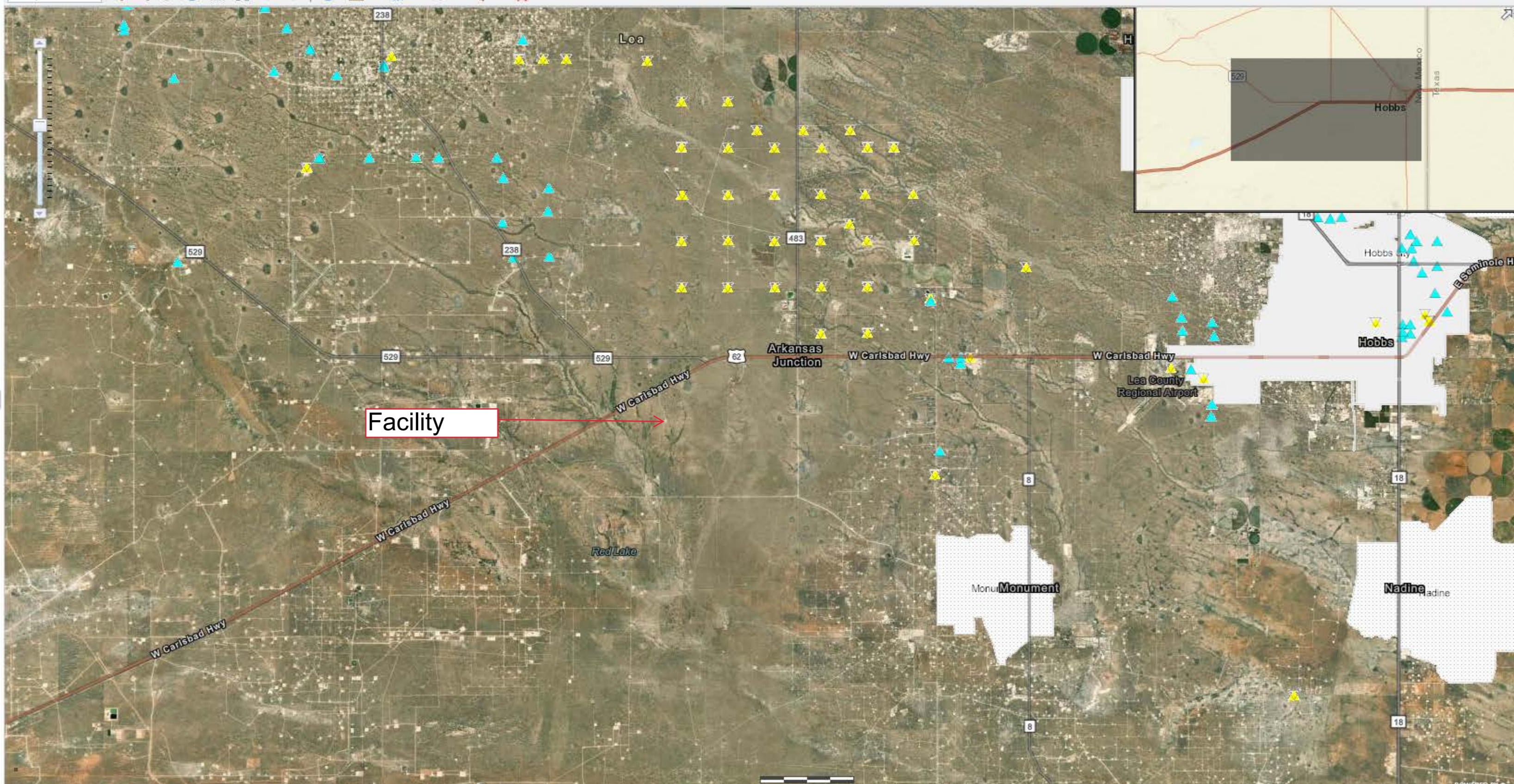
ROAD CLASSIFICATION  
Expressway  
Secondary Hwy  
Ramp  
Interstate Route  
US Route  
Local Connector  
Local Road  
dwd  
State Route

IRONHOUSE DRAW, NM  
2023

Legend Basemap Query

1:144,448

- Voluntary Remediation Program
- Superfund Sites
- Drinking Water Sources
  - Active Surface Water Systems
  - Active Ground Water Systems
  - Inactive Drinking Water Sources
- Hazardous Waste Facilities
- Solid Waste Facilities
- Solid Waste Bureau Enforcement Areas
- Petroleum Storage Tanks
- Leaking Tank Sites
- NPDES Permits
- Water Quality Stations
- Nonpoint Source Program
- Restoration Projects
- Impaired Waters 2024 IR FINAL
- Assessed Waters 2024 IR FINAL
- National Hydrography Dataset
- COVID Wastewater
- COVID-19 OSHA Data
- Watershed Boundary Dataset
- Aquifer Sensitivity
- National Land Cover Database
- USGS Stream Gages
- Legislative Boundaries
- Places
  - Incorporated Place
  - Census Designated Place
- Colonias







# State NO #1 SWD



U.S. Fish and Wildlife Service, National Standards and Support Team, wetlands\_team@fws.gov

July 3, 2025

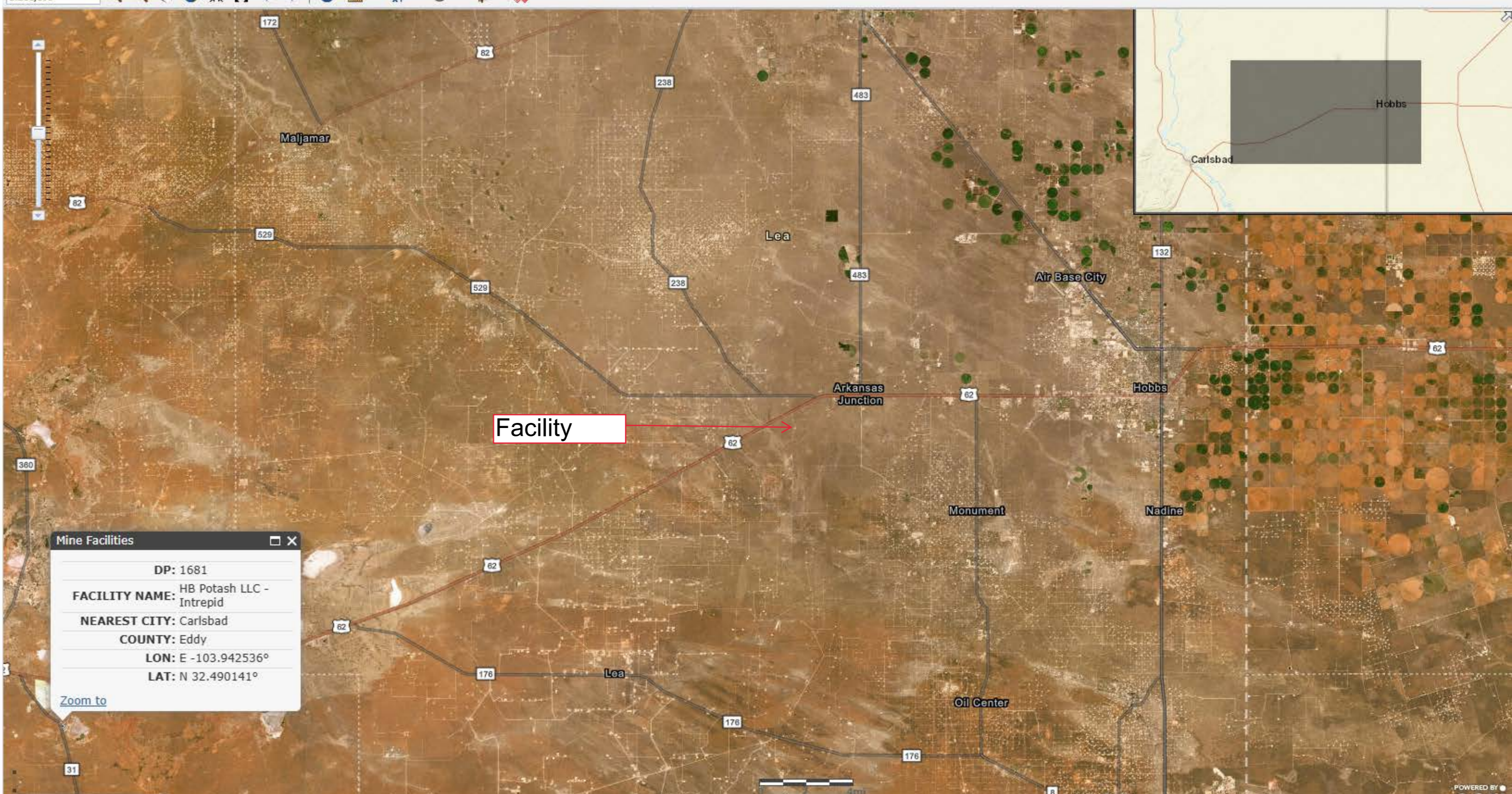
### Wetlands

-  Estuarine and Marine Deepwater
-  Freshwater Emergent Wetland
-  Lake
-  Estuarine and Marine Wetland
-  Freshwater Forested/Shrub Wetland
-  Other
-  Freshwater Pond
-  Riverine

This map is for general reference only. The US Fish and Wildlife Service is not responsible for the accuracy or currentness of the base data shown on this map. All wetlands related data should be used in accordance with the layer metadata found on the Wetlands Mapper web site.

Legend Basemap Query 1:288,895

- Counties
- Air Emissions
- Air Facilities
- Nonattainment Areas
- APS Food Facilities
- Onsite Wastewater Systems
- Dairies
- Brownfields
- Ground Water Discharge Permits
- Mine Facilities**
  - Mine Facilities
    - Mine Facilities
    - X
- State Cleanup Program
- Voluntary Remediation Program
- Superfund Sites
- Drinking Water Sources
- Hazardous Waste Facilities
- Solid Waste Facilities
- Solid Waste Bureau Enforcement Areas
- Petroleum Storage Tanks
- Leaking Tank Sites
- NPDES Permits
- Water Quality Stations
- Nonpoint Source Program
- Restoration Projects
- Impaired Waters 2024 IR FINAL
- Assessed Waters 2024 IR FINAL
- National Hydrography Dataset
- COVID Wastewater
- COVID-19 OSHA Data
- Watershed Boundary Dataset
- Aquifer Sensitivity
- National Land Cover Database
- USGS Stream Gauges
- Legislative Boundaries



**Mine Facilities**

DP: 1681

**FACILITY NAME:** HB Potash LLC - Intrepid

**NEAREST CITY:** Carlsbad

**COUNTY:** Eddy

**LON:** E -103.942536°

**LAT:** N 32.490141°

[Zoom to](#)

Lon: -103.65408°, Lat: 32.79559°

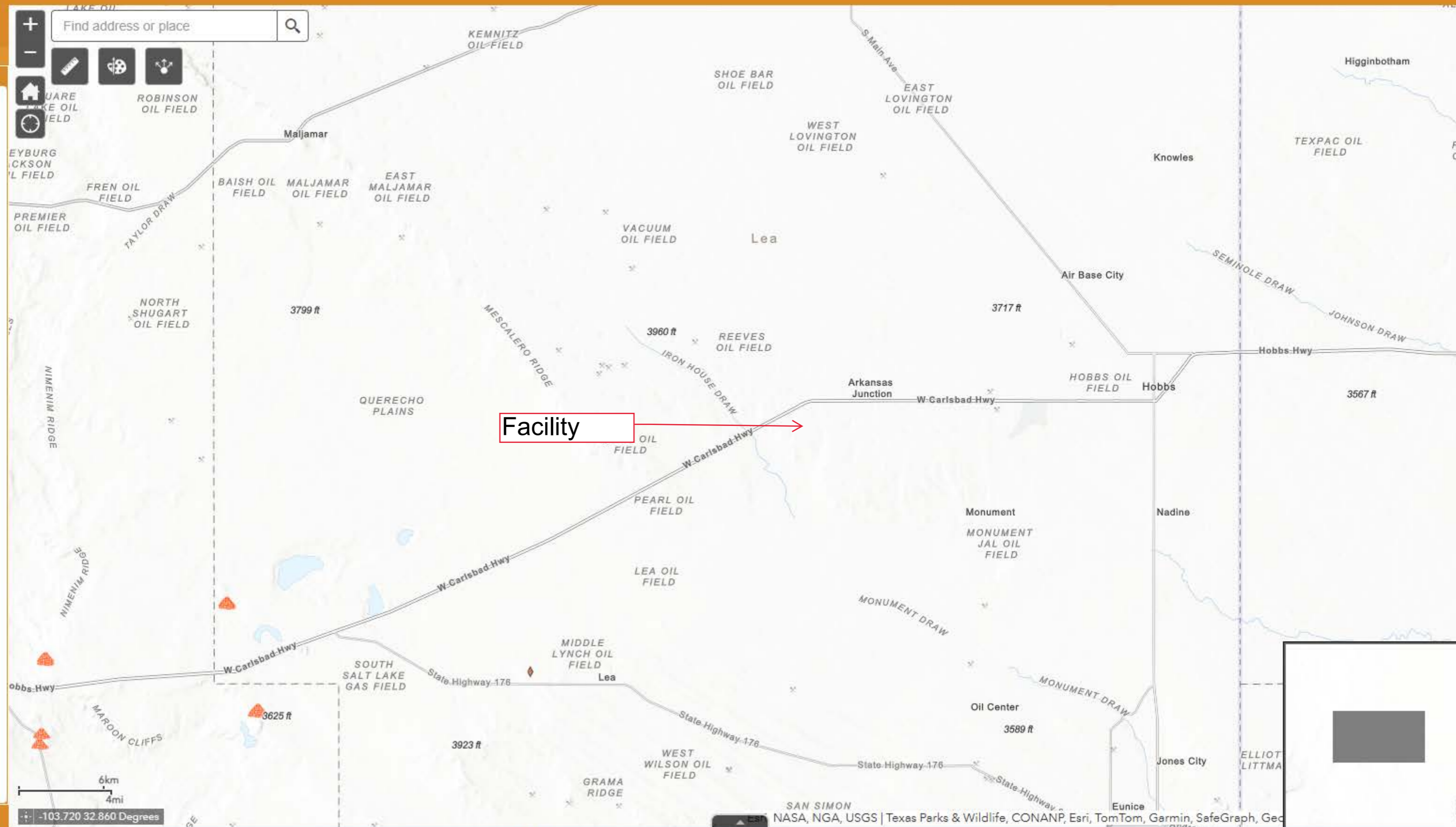
# Registered Mines in New Mexico

NM Mining and Minerals Division

EMNRD Home Help



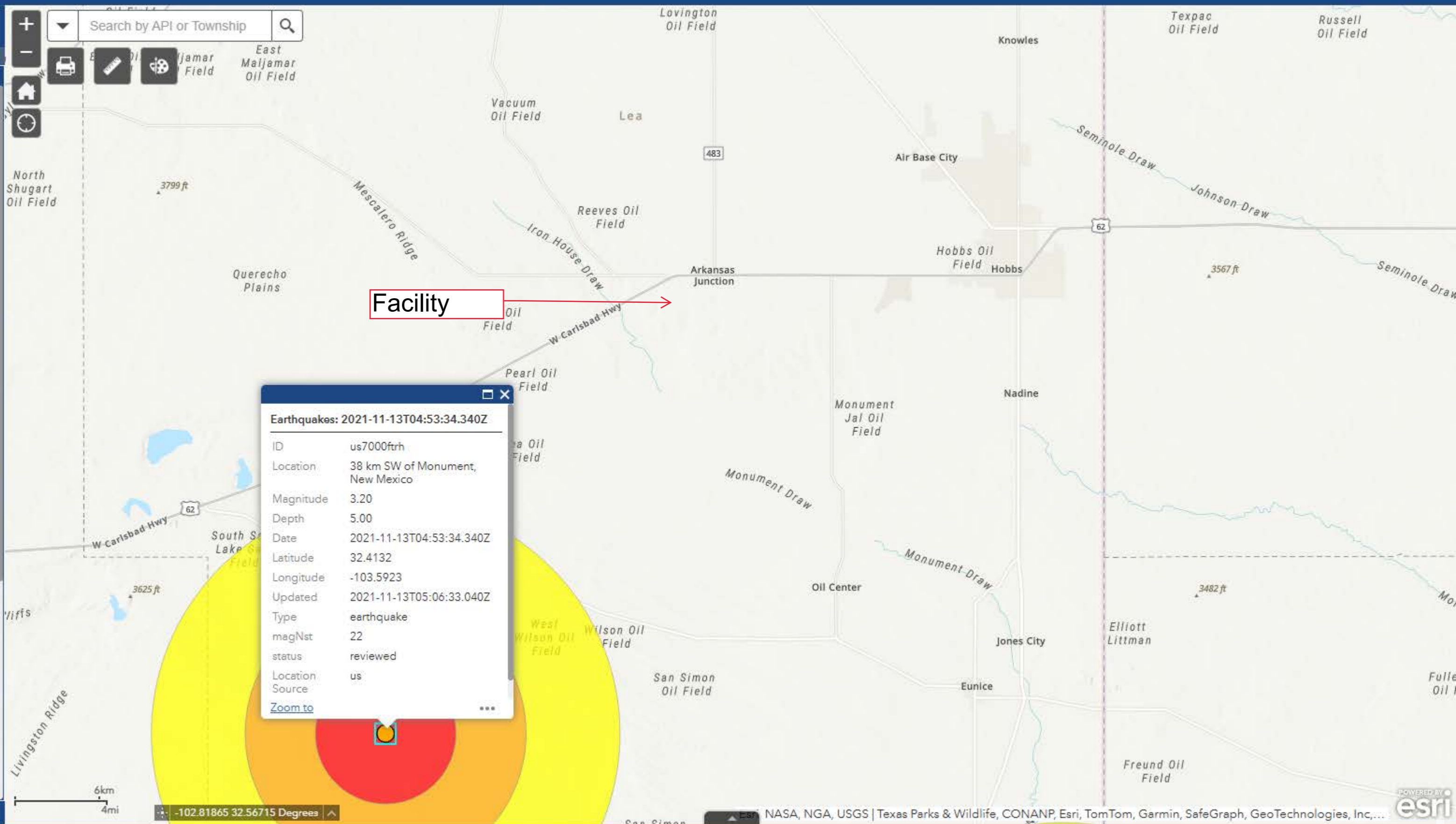
- Layer List
- Layers
- Registered Mines
  - Mineral\_and\_Surface\_Ownership
  - Public Land Survey System (PLSS)





Layer List

- Layers**
- OSE Water PODs
  - M2.5+ Earthquakes (USGS 30-day)
  - NM Oil and Gas Wells
  - Incidents (C-141)
  - Facilities
  - USGS Groundwater wells
  - Induced Seismicity Area
    - M2.5+ Earthquakes (2021+)
    - Seismic Response 2.5 to 2.9
    - Seismic Response 3.0 to 3.4
    - Seismicity Area 3.5 and above
  - Permian Basin Karst Areas
  - BLM Oil Gas Leases Case Disp
  - BLM Oil Gas Leases Production Status
  - BLM Fluid Minerals Case
  - BLM FM Agreements Case Disp
  - BLM FM Agreements Production Status
  - BLM FM Participating Areas Case Disp

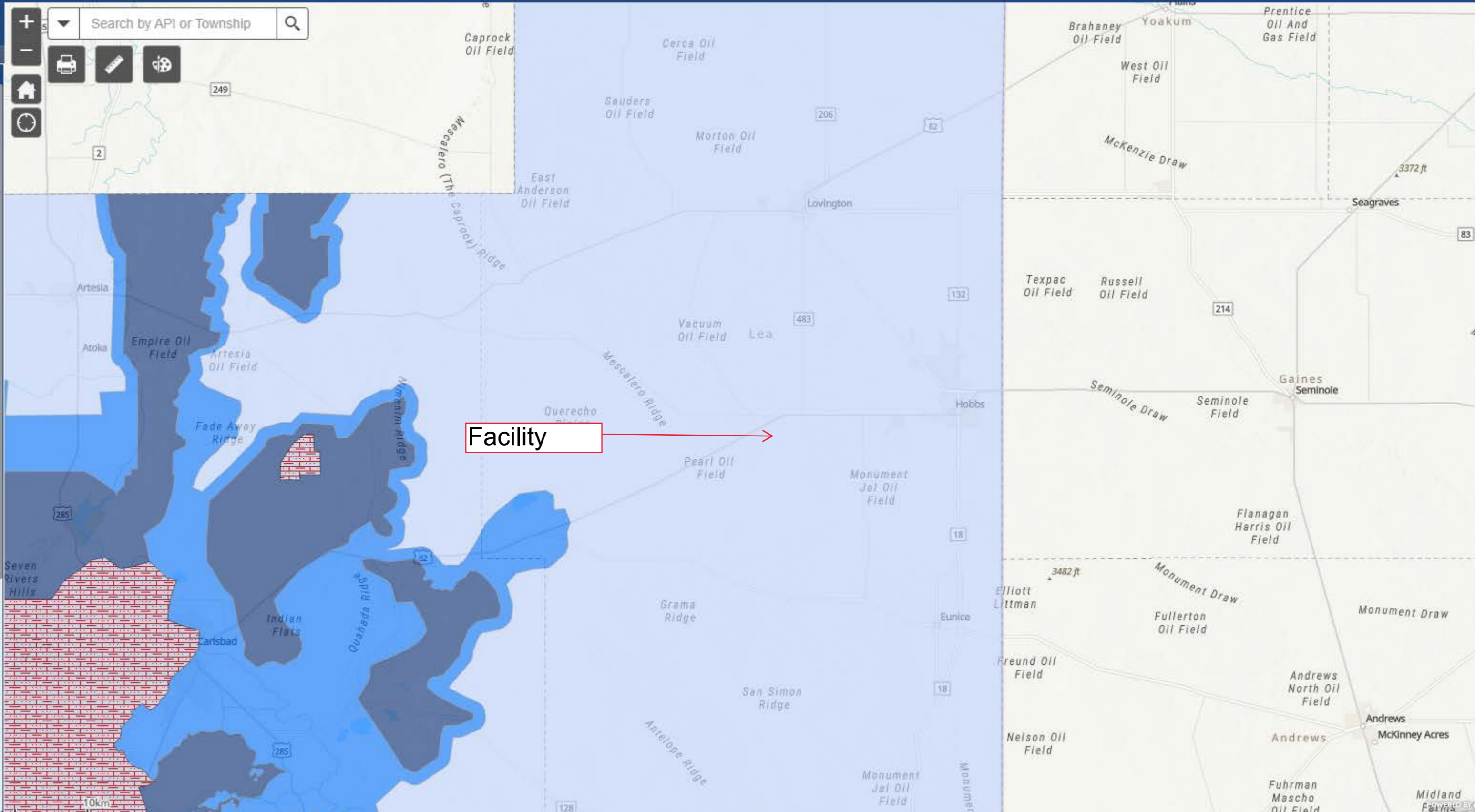




Layer List

Layers

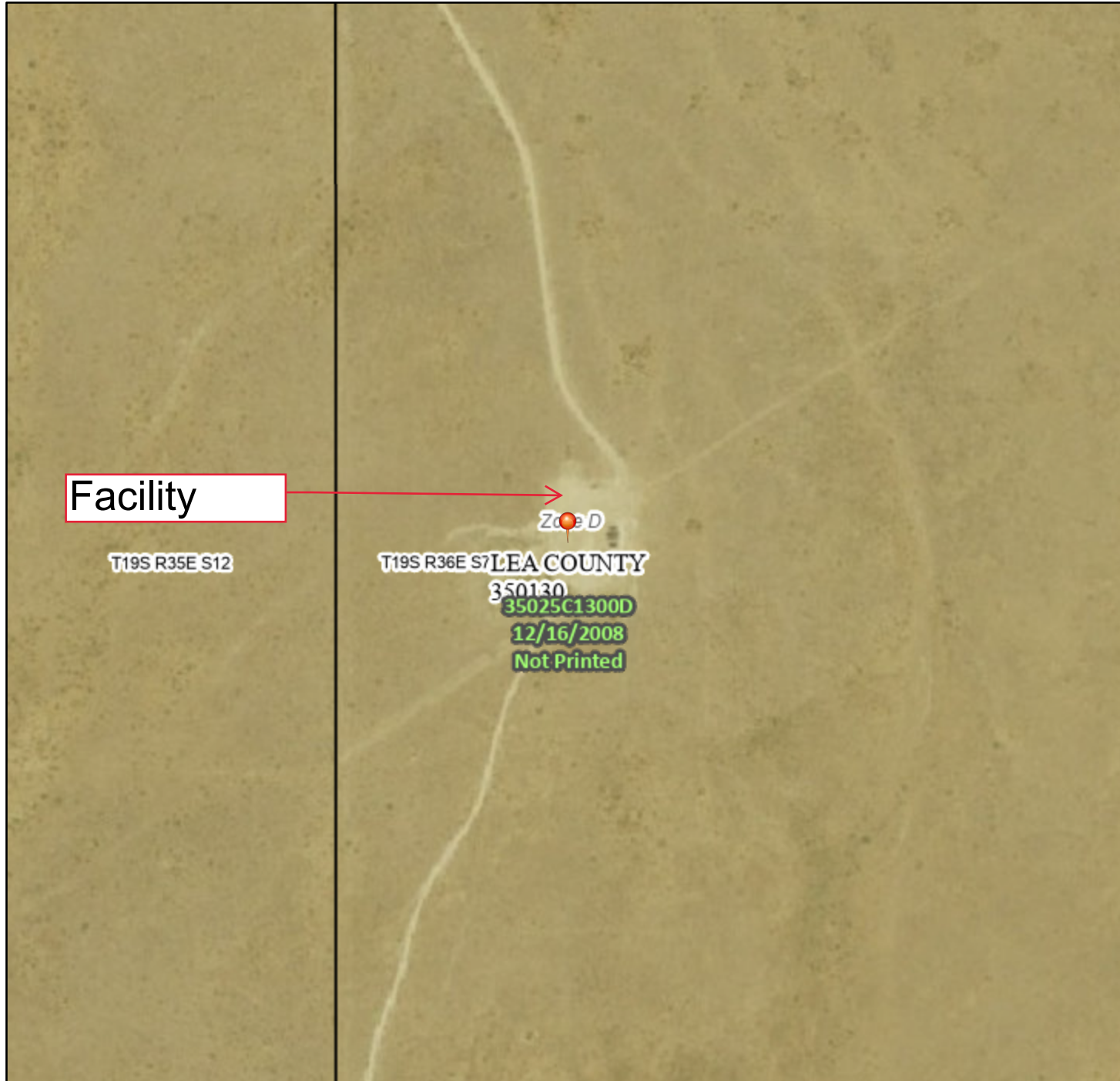
- OSE Water PODs
- M2.5+ Earthquakes (USGS 30-day)
- NM Oil and Gas Wells
- Incidents (C-141)
- Facilities
- USGS Groundwater wells
- Induced Seismicity Area
- Permian Basin Karst Areas
  - Critical Karst Resource Area
  - Karst Occurrence Potential
    - High
    - Medium
    - Low
- BLM Oil Gas Leases Case Disp
- BLM Oil Gas Leases Production Status
- BLM Fluid Minerals Case
- BLM FM Agreements Case Disp
- BLM FM Agreements Production Status



# National Flood Hazard Layer FIRMette



103°24'19"W 32°40'52"N



## Legend

SEE FIS REPORT FOR DETAILED LEGEND AND INDEX MAP FOR FIRM PANEL LAYOUT

SPECIAL FLOOD HAZARD AREAS		Without Base Flood Elevation (BFE) <i>Zone A, V, A99</i>
		With BFE or Depth <i>Zone AE, AO, AH, VE, AR</i>
		Regulatory Floodway

OTHER AREAS OF FLOOD HAZARD		0.2% Annual Chance Flood Hazard, Areas of 1% annual chance flood with average depth less than one foot or with drainage areas of less than one square mile <i>Zone X</i>
		Future Conditions 1% Annual Chance Flood Hazard <i>Zone X</i>
		Area with Reduced Flood Risk due to Levee. See Notes. <i>Zone X</i>
		Area with Flood Risk due to Levee <i>Zone D</i>

OTHER AREAS		NO SCREEN Area of Minimal Flood Hazard <i>Zone X</i>
		Effective LOMRs
		Area of Undetermined Flood Hazard <i>Zone D</i>

GENERAL STRUCTURES		Channel, Culvert, or Storm Sewer
		Levee, Dike, or Floodwall

OTHER FEATURES		20.2 Cross Sections with 1% Annual Chance Water Surface Elevation
		17.5 Coastal Transect
		Base Flood Elevation Line (BFE)
		Limit of Study
		Jurisdiction Boundary
		Coastal Transect Baseline
		Profile Baseline
		Hydrographic Feature

MAP PANELS		Digital Data Available
		No Digital Data Available
		Unmapped



The pin displayed on the map is an approximate point selected by the user and does not represent an authoritative property location.

This map complies with FEMA's standards for the use of digital flood maps if it is not void as described below. The basemap shown complies with FEMA's basemap accuracy standards

The flood hazard information is derived directly from the authoritative NFHL web services provided by FEMA. This map was exported on 7/3/2025 at 5:12 PM and does not reflect changes or amendments subsequent to this date and time. The NFHL and effective information may change or become superseded by new data over time.

This map image is void if the one or more of the following map elements do not appear: basemap imagery, flood zone labels, legend, scale bar, map creation date, community identifiers, FIRM panel number, and FIRM effective date. Map images for unmapped and unmodernized areas cannot be used for regulatory purposes.

Released to Imaging: 2/10/2026 3:30:04 PM

1:6,000

Basemap Imagery Source: USGS National Map 2023

---

---

ATTACHMENT G

---

---



Sante Fe Main Office  
Phone: (505) 476-3441

General Information  
Phone: (505) 629-6116

Online Phone Directory  
<https://www.emnrd.nm.gov/ocd/contact-us>

**State of New Mexico**  
**Energy, Minerals and Natural Resources**  
**Oil Conservation Division**  
**1220 S. St Francis Dr.**  
**Santa Fe, NM 87505**

QUESTIONS

Action 526258

**QUESTIONS**

Operator: SELECT AGUA LIBRE MIDSTREAM, LLC 12515 Carriage Way Oklahoma City, OK 73142	OGRID: 331031
	Action Number: 526258
	Action Type: [C-141] Site Char./Remediation Plan C-141 (C-141-v-Plan)

**QUESTIONS**

<b>Prerequisites</b>	
Incident ID (n#)	nGRL1318237822
Incident Name	NGRL1318237822 STATE NO #1 SWD FACILITY @ 30-025-28468
Incident Type	Produced Water Release
Incident Status	Remediation Plan Received
Incident Well	[30-025-28468] STATE NO #001

<b>Location of Release Source</b>	
<i>Please answer all the questions in this group.</i>	
Site Name	State NO #1 SWD facility
Date Release Discovered	06/28/2013
Surface Owner	State

<b>Incident Details</b>	
<i>Please answer all the questions in this group.</i>	
Incident Type	Produced Water Release
Did this release result in a fire or is the result of a fire	No
Did this release result in any injuries	No
Has this release reached or does it have a reasonable probability of reaching a watercourse	No
Has this release endangered or does it have a reasonable probability of endangering public health	No
Has this release substantially damaged or will it substantially damage property or the environment	No
Is this release of a volume that is or may with reasonable probability be detrimental to fresh water	No

<b>Nature and Volume of Release</b>	
<i>Material(s) released, please answer all that apply below. Any calculations or specific justifications for the volumes provided should be attached to the follow-up C-141 submission.</i>	
Crude Oil Released (bbls) Details	Not answered.
Produced Water Released (bbls) Details	Cause: Corrosion   Valve   Produced Water   Released: 219 BBL   Recovered: 210 BBL   Lost: 9 BBL.
Is the concentration of chloride in the produced water >10,000 mg/l	Yes
Condensate Released (bbls) Details	Not answered.
Natural Gas Vented (Mcf) Details	Not answered.
Natural Gas Flared (Mcf) Details	Not answered.
Other Released Details	Not answered.
Are there additional details for the questions above (i.e. any answer containing Other, Specify, Unknown, and/or Fire, or any negative lost amounts)	Not answered.

Sante Fe Main Office  
Phone: (505) 476-3441

General Information  
Phone: (505) 629-6116

Online Phone Directory  
<https://www.emnrd.nm.gov/ocd/contact-us>

**State of New Mexico**  
**Energy, Minerals and Natural Resources**  
**Oil Conservation Division**  
**1220 S. St Francis Dr.**  
**Santa Fe, NM 87505**

QUESTIONS, Page 2

Action 526258

**QUESTIONS (continued)**

Operator: SELECT AGUA LIBRE MIDSTREAM, LLC 12515 Carriage Way Oklahoma City, OK 73142	OGRID: 331031
	Action Number: 526258
	Action Type: [C-141] Site Char./Remediation Plan C-141 (C-141-v-Plan)

**QUESTIONS**

<b>Nature and Volume of Release (continued)</b>	
Is this a gas only submission (i.e. only significant Mcf values reported)	<b>No, according to supplied volumes this does not appear to be a "gas only" report.</b>
Was this a major release as defined by Subsection A of 19.15.29.7 NMAC	<b>Yes</b>
Reasons why this would be considered a submission for a notification of a major release	<b>From paragraph A. "Major release" determine using: (1) an unauthorized release of a volume, excluding gases, of 25 barrels or more.</b>

*With the implementation of the 19.15.27 NMAC (05/25/2021), venting and/or flaring of natural gas (i.e. gas only) are to be submitted on the C-129 form.*

**Initial Response**

*The responsible party must undertake the following actions immediately unless they could create a safety hazard that would result in injury.*

The source of the release has been stopped	<b>True</b>
The impacted area has been secured to protect human health and the environment	<b>True</b>
Released materials have been contained via the use of berms or dikes, absorbent pads, or other containment devices	<b>True</b>
All free liquids and recoverable materials have been removed and managed appropriately	<b>True</b>
If all the actions described above have not been undertaken, explain why	<i>Not answered.</i>

*Per Paragraph (4) of Subsection B of 19.15.29.8 NMAC the responsible party may commence remediation immediately after discovery of a release. If remediation has begun, please prepare and attach a narrative of actions to date in the follow-up C-141 submission. If remedial efforts have been successfully completed or if the release occurred within a lined containment area (see Subparagraph (a) of Paragraph (5) of Subsection A of 19.15.29.11 NMAC), please prepare and attach all information needed for closure evaluation in the follow-up C-141 submission.*

I hereby certify that the information given above is true and complete to the best of my knowledge and understand that pursuant to OCD rules and regulations all operators are required to report and/or file certain release notifications and perform corrective actions for releases which may endanger public health or the environment. The acceptance of a C-141 report by the OCD does not relieve the operator of liability should their operations have failed to adequately investigate and remediate contamination that pose a threat to groundwater, surface water, human health or the environment. In addition, OCD acceptance of a C-141 report does not relieve the operator of responsibility for compliance with any other federal, state, or local laws and/or regulations.

I hereby agree and sign off to the above statement	Name: Randy Gonzalez Title: Consultant Email: r.gonzalez@sqenv.com Date: 11/13/2025
--	--

Sante Fe Main Office  
Phone: (505) 476-3441

General Information  
Phone: (505) 629-6116

Online Phone Directory  
<https://www.emnrd.nm.gov/ocd/contact-us>

**State of New Mexico**  
**Energy, Minerals and Natural Resources**  
**Oil Conservation Division**  
**1220 S. St Francis Dr.**  
**Santa Fe, NM 87505**

QUESTIONS, Page 3

Action 526258

**QUESTIONS (continued)**

Operator: SELECT AGUA LIBRE MIDSTREAM, LLC 12515 Carriage Way Oklahoma City, OK 73142	OGRID: 331031
	Action Number: 526258
	Action Type: [C-141] Site Char./Remediation Plan C-141 (C-141-v-Plan)

**QUESTIONS**

**Site Characterization**

Please answer all the questions in this group (only required when seeking remediation plan approval and beyond). This information must be provided to the appropriate district office no later than 90 days after the release discovery date.

What is the shallowest depth to groundwater beneath the area affected by the release in feet below ground surface (ft bgs)	Between 75 and 100 (ft.)
What method was used to determine the depth to ground water	NM OSE iWaters Database Search
Did this release impact groundwater or surface water	No
<b>What is the minimum distance, between the closest lateral extents of the release and the following surface areas:</b>	
A continuously flowing watercourse or any other significant watercourse	Between ½ and 1 (mi.)
Any lakebed, sinkhole, or playa lake (measured from the ordinary high-water mark)	Between ½ and 1 (mi.)
An occupied permanent residence, school, hospital, institution, or church	Between 1 and 5 (mi.)
A spring or a private domestic fresh water well used by less than five households for domestic or stock watering purposes	Between ½ and 1 (mi.)
Any other fresh water well or spring	Between ½ and 1 (mi.)
Incorporated municipal boundaries or a defined municipal fresh water well field	Greater than 5 (mi.)
A wetland	Between ½ and 1 (mi.)
A subsurface mine	Greater than 5 (mi.)
An (non-karst) unstable area	Greater than 5 (mi.)
Categorize the risk of this well / site being in a karst geology	Low
A 100-year floodplain	Greater than 5 (mi.)
Did the release impact areas not on an exploration, development, production, or storage site	No

**Remediation Plan**

Please answer all the questions that apply or are indicated. This information must be provided to the appropriate district office no later than 90 days after the release discovery date.

Requesting a remediation plan approval with this submission	Yes
<i>Attach a comprehensive report demonstrating the lateral and vertical extents of soil contamination associated with the release have been determined, pursuant to 19.15.29.11 NMAC and 19.15.29.13 NMAC.</i>	
Have the lateral and vertical extents of contamination been fully delineated	Yes
Was this release entirely contained within a lined containment area	No

**Soil Contamination Sampling:** (Provide the highest observable value for each, in milligrams per kilograms.)

Chloride (EPA 300.0 or SM4500 Cl B)	4933
TPH (GRO+DRO+MRO) (EPA SW-846 Method 8015M)	0
GRO+DRO (EPA SW-846 Method 8015M)	0
BTEX (EPA SW-846 Method 8021B or 8260B)	0
Benzene (EPA SW-846 Method 8021B or 8260B)	0

Per Subsection B of 19.15.29.11 NMAC unless the site characterization report includes completed efforts at remediation, the report must include a proposed remediation plan in accordance with 19.15.29.12 NMAC, which includes the anticipated timelines for beginning and completing the remediation.

On what estimated date will the remediation commence	01/05/2026
On what date will (or did) the final sampling or liner inspection occur	01/19/2026
On what date will (or was) the remediation complete(d)	01/26/2026
What is the estimated surface area (in square feet) that will be reclaimed	1200
What is the estimated volume (in cubic yards) that will be reclaimed	400
What is the estimated surface area (in square feet) that will be remediated	1600
What is the estimated volume (in cubic yards) that will be remediated	400

*These estimated dates and measurements are recognized to be the best guess or calculation at the time of submission and may (be) change(d) over time as more remediation efforts are completed.*

*The OCD recognizes that proposed remediation measures may have to be minimally adjusted in accordance with the physical realities encountered during remediation. If the responsible party has any need to significantly deviate from the remediation plan proposed, then it should consult with the division to determine if another remediation plan submission is required.*

Sante Fe Main Office  
Phone: (505) 476-3441

General Information  
Phone: (505) 629-6116

Online Phone Directory  
<https://www.emnrd.nm.gov/ocd/contact-us>

**State of New Mexico**  
**Energy, Minerals and Natural Resources**  
**Oil Conservation Division**  
**1220 S. St Francis Dr.**  
**Santa Fe, NM 87505**

QUESTIONS, Page 4

Action 526258

**QUESTIONS (continued)**

Operator: SELECT AGUA LIBRE MIDSTREAM, LLC 12515 Carriage Way Oklahoma City, OK 73142	OGRID: 331031
	Action Number: 526258
	Action Type: [C-141] Site Char./Remediation Plan C-141 (C-141-v-Plan)

**QUESTIONS**

**Remediation Plan (continued)**

Please answer all the questions that apply or are indicated. This information must be provided to the appropriate district office no later than 90 days after the release discovery date.

**This remediation will (or is expected to) utilize the following processes to remediate / reduce contaminants:**

(Select all answers below that apply.)

(Ex Situ) Excavation and <b>off-site</b> disposal (i.e. dig and haul, hydrovac, etc.)	Yes
Which OCD approved facility will be used for <b>off-site</b> disposal	FEEM0112342028 LEA LAND LANDFILL
<b>OR</b> which OCD approved well (API) will be used for <b>off-site</b> disposal	Not answered.
<b>OR</b> is the <b>off-site</b> disposal site, to be used, out-of-state	No
<b>OR</b> is the <b>off-site</b> disposal site, to be used, an NMED facility	No
(Ex Situ) Excavation and <b>on-site</b> remediation (i.e. On-Site Land Farms)	No
(In Situ) Soil Vapor Extraction	No
(In Situ) Chemical processing (i.e. Soil Shredding, Potassium Permanganate, etc.)	No
(In Situ) Biological processing (i.e. Microbes / Fertilizer, etc.)	No
(In Situ) Physical processing (i.e. Soil Washing, Gypsum, Disking, etc.)	No
Ground Water Abatement pursuant to 19.15.30 NMAC	No
OTHER (Non-listed remedial process)	No

Per Subsection B of 19.15.29.11 NMAC unless the site characterization report includes completed efforts at remediation, the report must include a proposed remediation plan in accordance with 19.15.29.12 NMAC, which includes the anticipated timelines for beginning and completing the remediation.

I hereby certify that the information given above is true and complete to the best of my knowledge and understand that pursuant to OCD rules and regulations all operators are required to report and/or file certain release notifications and perform corrective actions for releases which may endanger public health or the environment. The acceptance of a C-141 report by the OCD does not relieve the operator of liability should their operations have failed to adequately investigate and remediate contamination that pose a threat to groundwater, surface water, human health or the environment. In addition, OCD acceptance of a C-141 report does not relieve the operator of responsibility for compliance with any other federal, state, or local laws and/or regulations.

I hereby agree and sign off to the above statement	Name: Randy Gonzalez Title: Consultant Email: r.gonzalez@sqenv.com Date: 11/13/2025
--	--

The OCD recognizes that proposed remediation measures may have to be minimally adjusted in accordance with the physical realities encountered during remediation. If the responsible party has any need to significantly deviate from the remediation plan proposed, then it should consult with the division to determine if another remediation plan submission is required.

Sante Fe Main Office  
Phone: (505) 476-3441

General Information  
Phone: (505) 629-6116

Online Phone Directory  
<https://www.emnrd.nm.gov/ocd/contact-us>

**State of New Mexico**  
**Energy, Minerals and Natural Resources**  
**Oil Conservation Division**  
**1220 S. St Francis Dr.**  
**Santa Fe, NM 87505**

QUESTIONS, Page 5

Action 526258

**QUESTIONS (continued)**

Operator: SELECT AGUA LIBRE MIDSTREAM, LLC 12515 Carriage Way Oklahoma City, OK 73142	OGRID: 331031
	Action Number: 526258
	Action Type: [C-141] Site Char./Remediation Plan C-141 (C-141-v-Plan)

**QUESTIONS**

<b>Deferral Requests Only</b>	
<i>Only answer the questions in this group if seeking a deferral upon approval this submission. Each of the following items must be confirmed as part of any request for deferral of remediation.</i>	
Requesting a deferral of the remediation closure due date with the approval of this submission	No

Sante Fe Main Office  
Phone: (505) 476-3441

General Information  
Phone: (505) 629-6116

Online Phone Directory  
<https://www.emnrd.nm.gov/ocd/contact-us>

**State of New Mexico**  
**Energy, Minerals and Natural Resources**  
**Oil Conservation Division**  
**1220 S. St Francis Dr.**  
**Santa Fe, NM 87505**

QUESTIONS, Page 6

Action 526258

**QUESTIONS (continued)**

Operator: SELECT AGUA LIBRE MIDSTREAM, LLC 12515 Carriage Way Oklahoma City, OK 73142	OGRID: 331031
	Action Number: 526258
	Action Type: [C-141] Site Char./Remediation Plan C-141 (C-141-v-Plan)

**QUESTIONS**

<b>Sampling Event Information</b>	
Last sampling notification (C-141N) recorded	{Unavailable.}

<b>Remediation Closure Request</b>	
<i>Only answer the questions in this group if seeking remediation closure for this release because all remediation steps have been completed.</i>	
Requesting a remediation closure approval with this submission	No

Sante Fe Main Office  
Phone: (505) 476-3441

General Information  
Phone: (505) 629-6116

Online Phone Directory  
<https://www.emnrd.nm.gov/ocd/contact-us>

**State of New Mexico**  
**Energy, Minerals and Natural Resources**  
**Oil Conservation Division**  
**1220 S. St Francis Dr.**  
**Santa Fe, NM 87505**

CONDITIONS

Action 526258

**CONDITIONS**

Operator: SELECT AGUA LIBRE MIDSTREAM, LLC 12515 Carriage Way Oklahoma City, OK 73142	OGRID: 331031
	Action Number: 526258
	Action Type: [C-141] Site Char./Remediation Plan C-141 (C-141-v-Plan)

**CONDITIONS**

Created By	Condition	Condition Date
scott.rodgers	The remediation plan is conditionally approved. 1). The depth to groundwater has not been adequately determined. If nearby wells are used to determine depth to groundwater, the wells should be no further than ½ mile away from the site, data must be no more than 25 years old, and well construction information must be provided. If evidence of depth to ground water within a ½ mile radius of the site cannot be provided, impacted soils will need to meet Table 1 Closure Criteria for ground water at a depth of 50 feet or less. If there are no wells within ½ mile of the site and/or the data from that well is more than 25 years old, a borehole can be drilled to 51' or 101'. If water is not detected in the open borehole after a 72-hour period, the OCD will accept this as a viable determination of depth to ground water. A copy of the driller's log is required.	2/10/2026
scott.rodgers	2). The variance request is to authorize Select Water to exclude the road from restoration and reclamation activities is denied. The lease road going through the location has ingress and egress from hwy. 62 as well as from county road 43. This would provide access to the locations south of the State NO #1 SWD Facility if remediation on the lease road is required. 3). The variance request to exclude the areas depicted with orange highlighting on Figure 3 from reclamation activities is denied. If contamination above the reclamation standards are found, they must be remediated, reclaimed and revegetated. 4). All samples must be analyzed for all constituents listed in Table I of 19.15.29.12 NMAC. Floor confirmation samples should be delineated/excavated to meet closure criteria standards for site assessment/characterization/proven depth to water determination. Sidewall samples should be delineated/excavated to 600 mg/kg for chlorides and 100 mg/kg for TPH to define the edge of the release	2/10/2026
scott.rodgers	Confirmation samples should be collected every 200 ft. 5). The work will need to occur in 90 days after the work plan has been reviewed.	2/10/2026