



Remediation Report and Closure Request
El Cedro Tank Overflow
Section: 31 Township: 29N Range: 5W
Lat: 36.688047 Long: -107.402200
Rio Arriba County, New Mexico

10/15/25

Harvest Personnel discovered a release at El Cedro CDP. The release was due to an excessive amount of rain collecting in the concrete containment and into the wastewater tank from the skid drains throughout the facility. This caused the wastewater tank to overflow into the concrete containment. Release volume was calculated to be 9.9 bbls. A truck was called to remove the fluids, for the next day.

10/16/25

All free-standing liquids were sucked up.

10/20/25

A Notification of Release was submitted to the NMOCD and assigned incident number – nAPP2529349366

10/30/25

Initial C-141 submitted to the NMOCD.

12/8/25

Inside of the containment was cleaned using oil soaker pads.

12/10/25

Notification of liner inspection was submitted to the NMOCD. Liner inspection was scheduled for 12/12/25 at 1:00 pm.

12/12/25

Harvest personnel were on location to perform liner inspection. No liner integrity issues were found. Containment is made of concrete.

12/31/25

C-141(Release Corrective action) Rejected due to dirty containment and NOR not matching C-141 recovered volume.

1/14/26

Containment was de-greased, scrubbed and pressure washed.



1/19/26

Notification of liner inspection was submitted to the NMOCD. Liner inspection was scheduled for 1/22/26 at 11:00 am

1/22/26

Harvest personnel were on location to perform liner inspection. No liner integrity issues were found. No further action required.

Photo Page

After Release

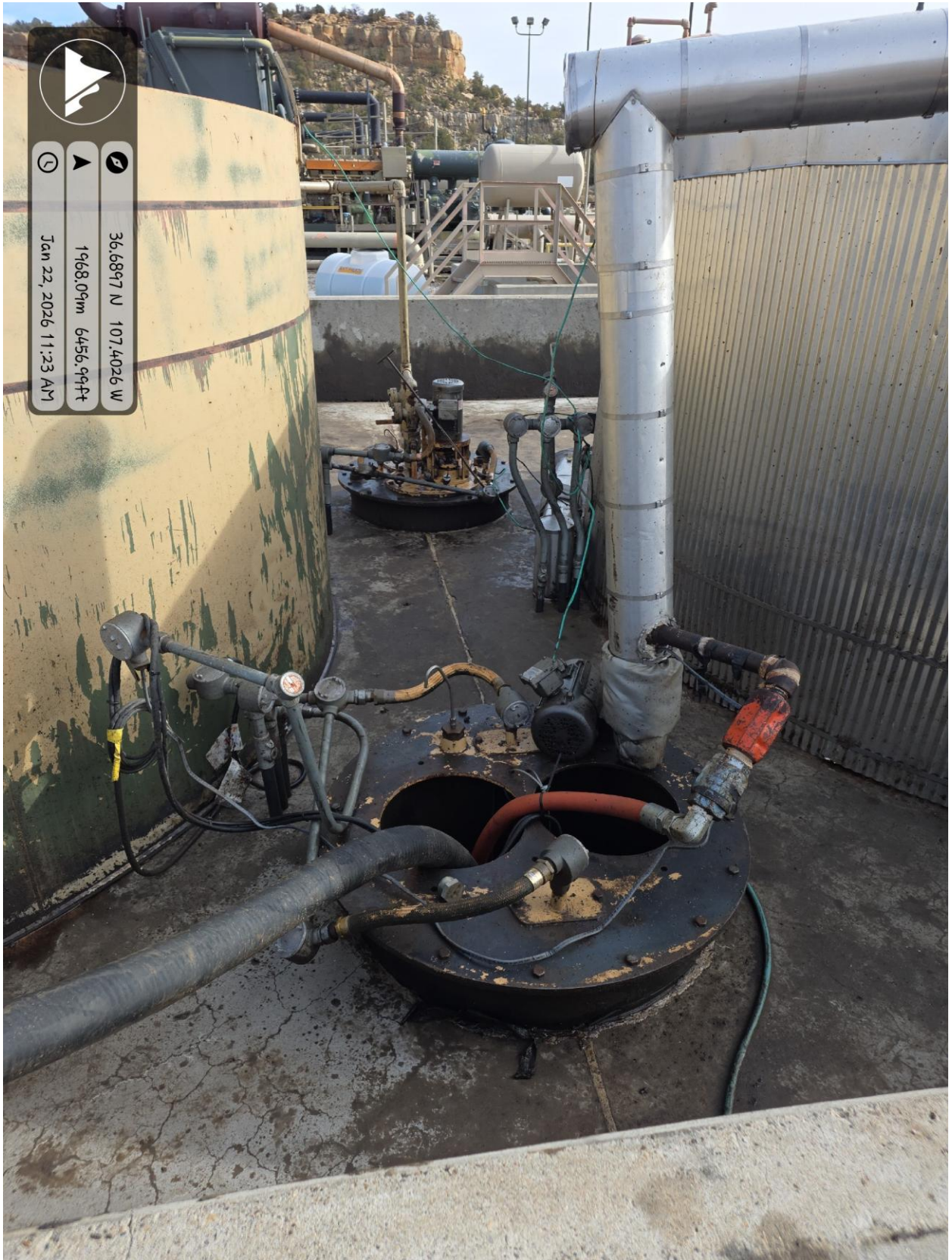


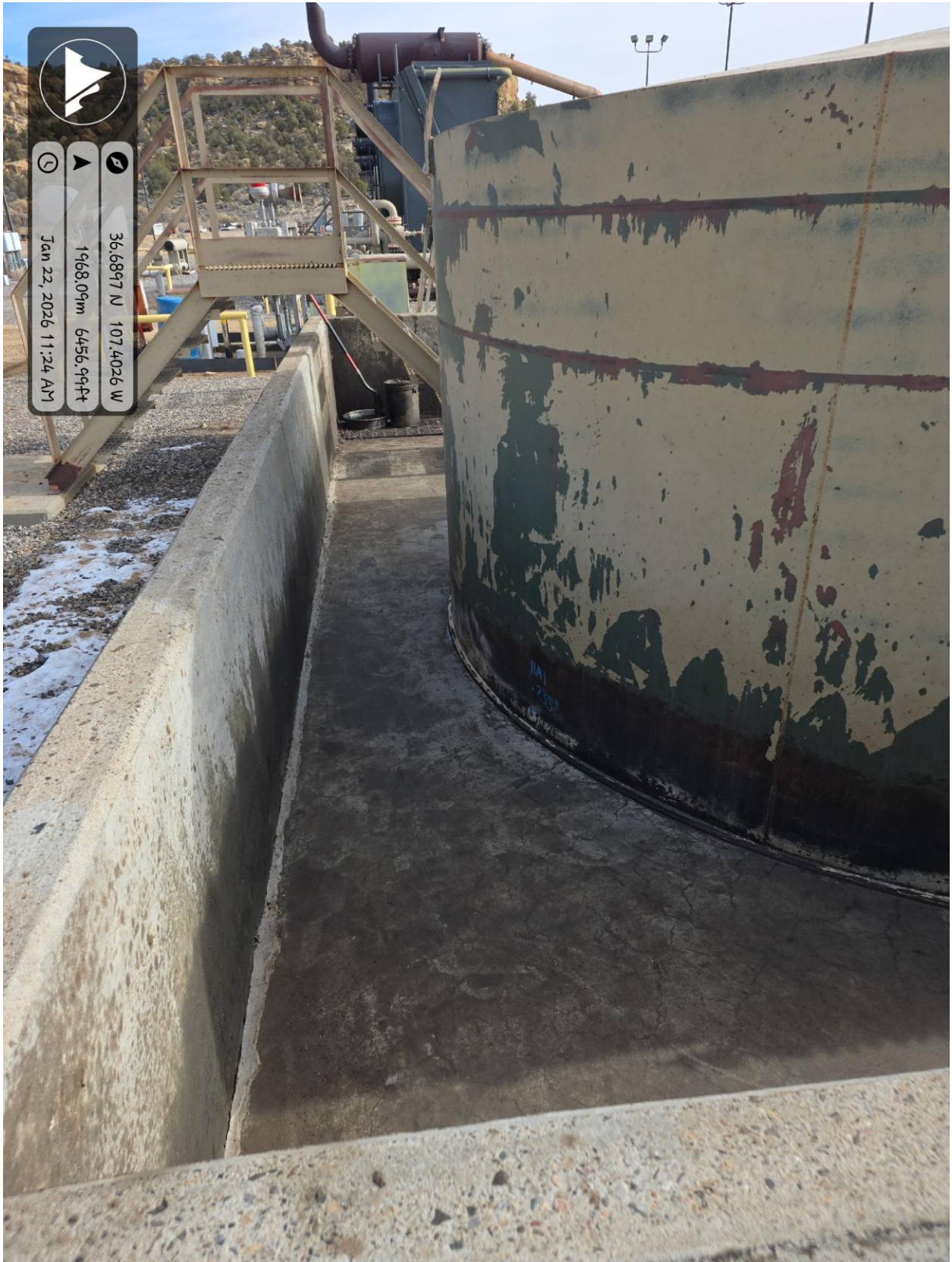
After Cleaning





36.6897 N 107.4026 W
1968.09m 6456.99ft
Jan 22, 2026 11:23 AM



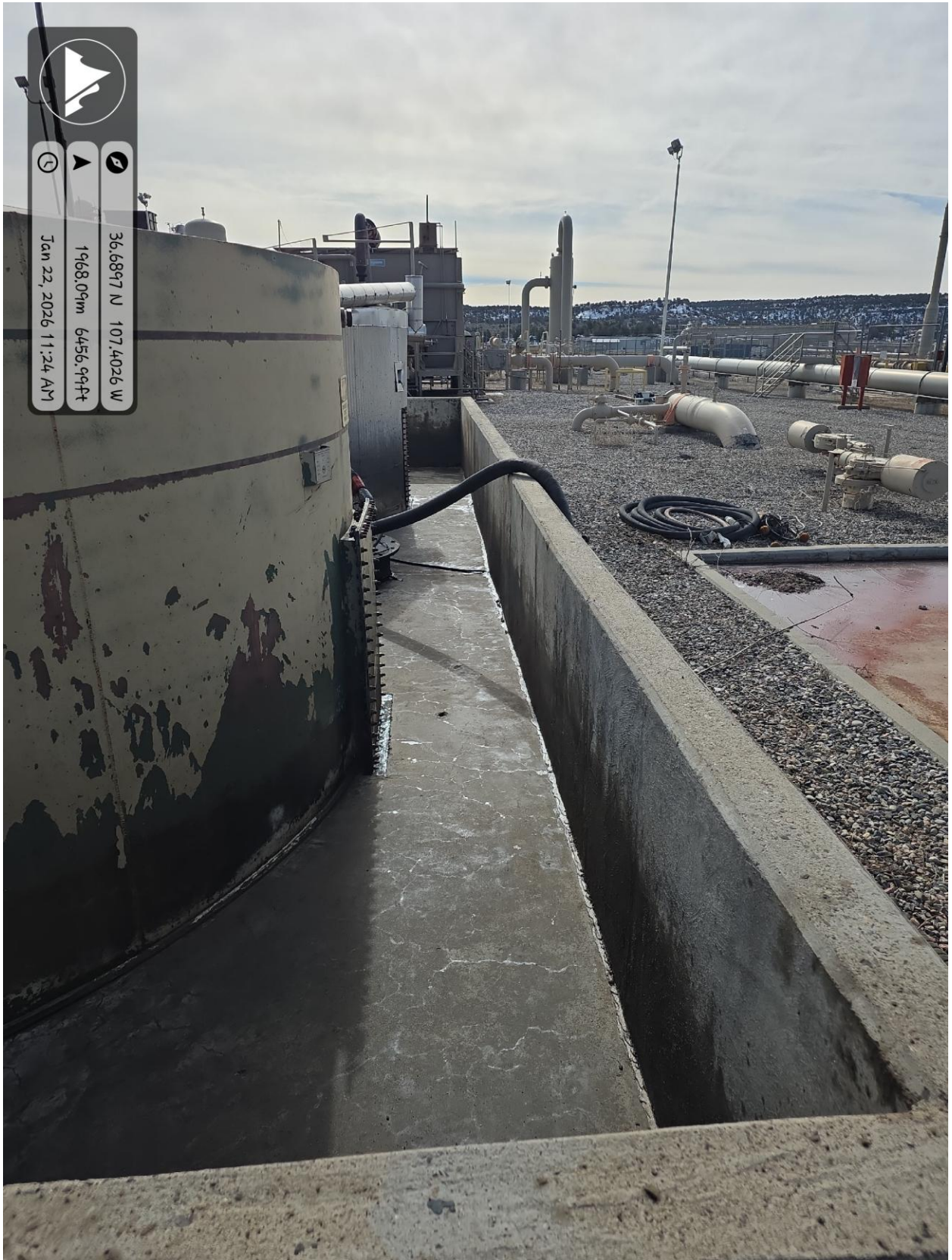








36.6897 N 107.4026 W
1968.09m 6456.99ft
Jan 22, 2026 11:24 AM















Release Area
Tank that over flowed

Add placemark ✕

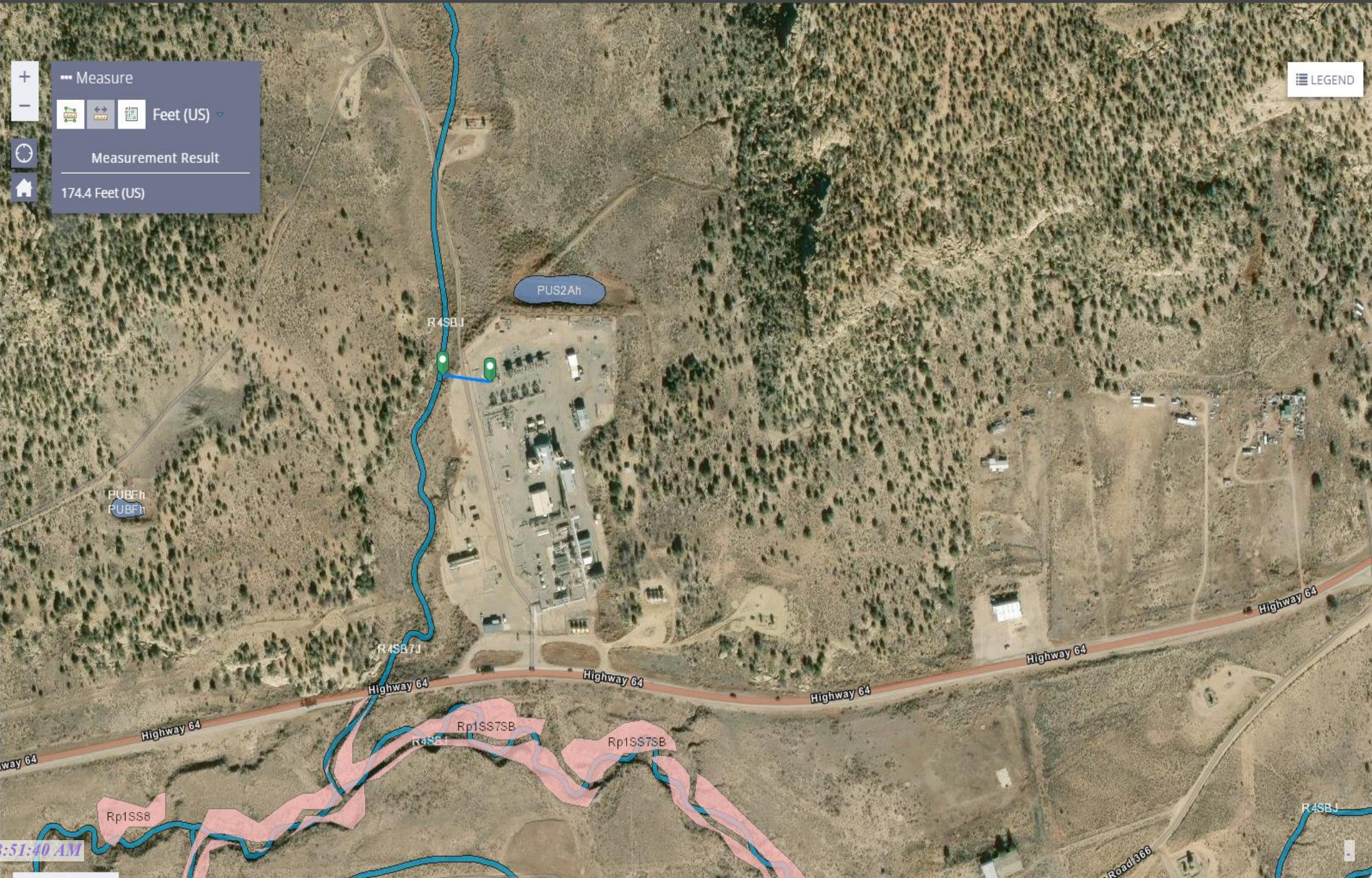
Click on the map to drop the placemark

Location
36°41'23"N 107°24'12"W

Advanced measurements ⓘ ^

Ground elevation
1,967.45 m ▾

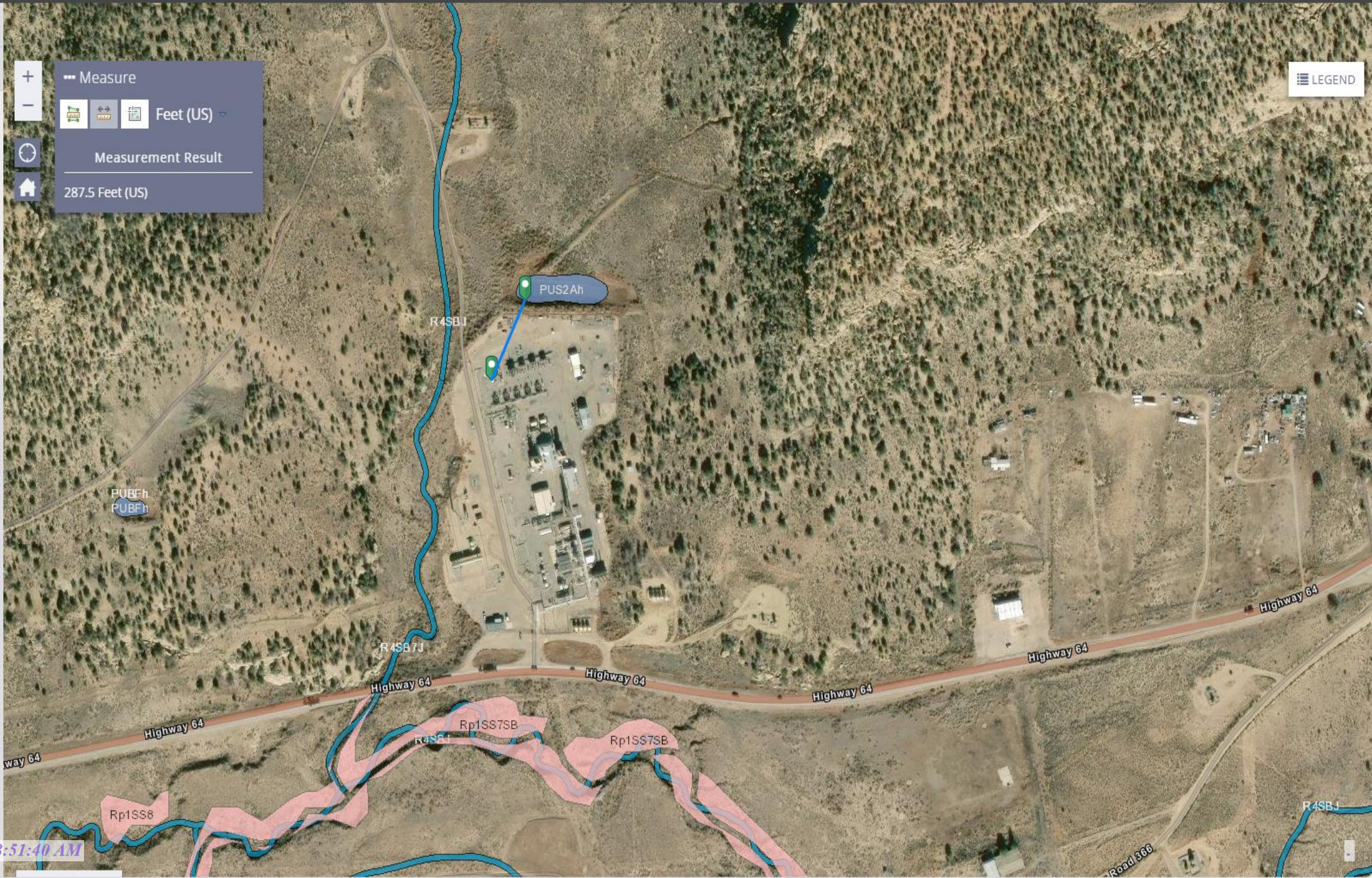
- BASEMAPS >
- MAP LAYERS >
- Wetlands
- Riparian
- Riparian Mapping Areas
- Data Source
 - Source Type
 - Image Scale
 - Image Year
- Areas of Interest
- FWS Managed Lands



+ Measure
- Feet (US)
Measurement Result
174.4 Feet (US)

LEGEND

- BASEMAPS >
- MAP LAYERS >
- Wetlands 1 0
 - Riparian 1 0
 - Riparian Mapping Areas 1 0
 - Data Source 1 0
 - Source Type
 - Image Scale
 - Image Year
 - Areas of Interest 0
 - FWS Managed Lands 1 0



+ Measure

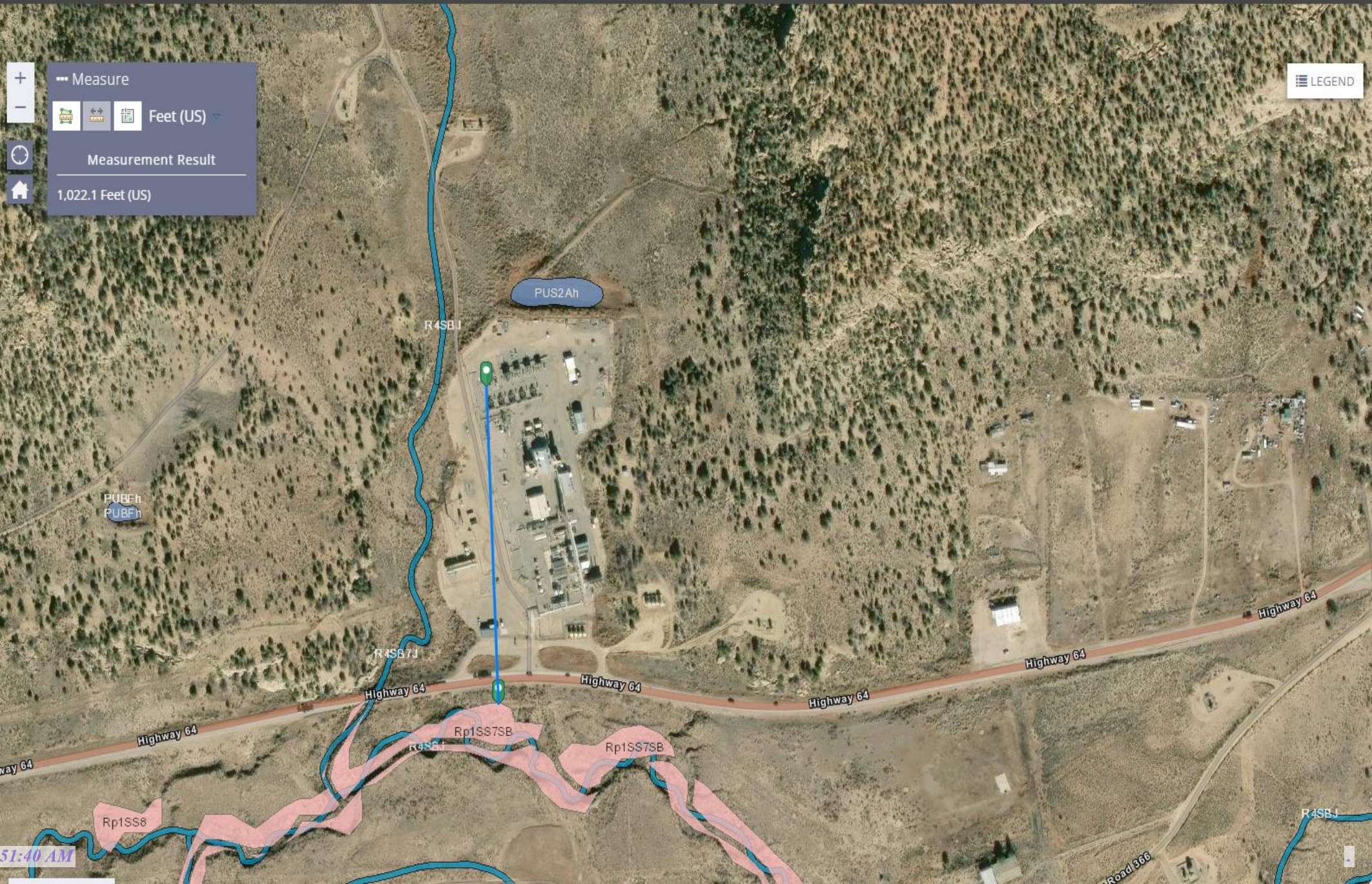
- Feet (US)

Measurement Result

287.5 Feet (US)

LEGEND

- BASEMAPS >
- MAP LAYERS >
- Wetlands
- Riparian
- Riparian Mapping Areas
- Data Source
 - Source Type
 - Image Scale
 - Image Year
- Areas of Interest
- FWS Managed Lands



+ Measure
- Feet (US)
Measurement Result
1,022.1 Feet (US)

LEGEND



- Layer List
- Layers
- M2.5+ Earthquakes (USGS 30-day) ...
 - OSE Points of Diversion ...
 - NM Oil and Gas Wells ...
 - Incidents (C-141) ...
 - Facilities ...
 - USGS Groundwater wells ...
 - Induced Seismicity Area ...
 - Permian Basin Karst Areas ...
 - BLM Oil Gas Leases Case Disp ...
 - BLM Oil Gas Leases Production Status ...
 - BLM Fluid Minerals Case ...
 - BLM FM Agreements Case Disp ...
 - BLM FM Agreements Production Status ...
 - BLM FM Participating Areas Case Disp ...
 - NM SLO Oil and Gas Leases ...
 - NM SLO Participating Area and Unit Agreement Boundaries ...
 - Political Boundaries and Transportation ...
 - Mineral and Surface Ownership ...

36.688047, -107.402200

Show search results for 36.688...

Measurement

Miles

Measurement Result

0.41 Miles

Clear

Press CTRL to enable snapping

El Cedro Distance to Water = 53ft
Elevation - 6447ft

Search result

36°41'16.969"N 107°24'07.920"W

Zoom to


Water Well SJ 00056
Distance to Water = 50ft
Elevation - 6444ft

100m
300ft

-107.39780 36.68491 Degrees

quarters are 1=NW 2=NE 3=SW 4=SE
quarters are smallest to largest

NAD83 UTM in meters

Well Tag	POD Nbr	Q64	Q16	Q4	Sec	Tws	Rng	X	Y	Map
SJ 00056	NW	SW	NE	31	29N	05W	285759.0	4062596.0 *		

* UTM location was derived from PLSS - see Help

Driller License:	Driller Company:		
Driller Name:	CONLEY COX		
Drill Start Date:	1954-09-17	Drill Finish Date:	1954-09-24
Log File Date:	1955-04-12	PCW Rcv Date:	Source: Shallow
Pump Type:	SUBMER	Pipe Discharge Size:	Estimated Yield: 9
Casing Size:	8.63	Depth Well:	142
		Depth Water:	50

Water Bearing Stratifications:

Top	Bottom	Description
60	65	Other/Unknown

Casing Perforations:

Top	Bottom
50	65



36.688047, -107.402200

Show search results for 36.688047, -1...

Legend

NM_Coal_Mine_Resources

Coal Mines



Coal Permit Boundaries (2015)

- Active Mining
- Reclamation Only
- Bond Released

NM Coal Districts



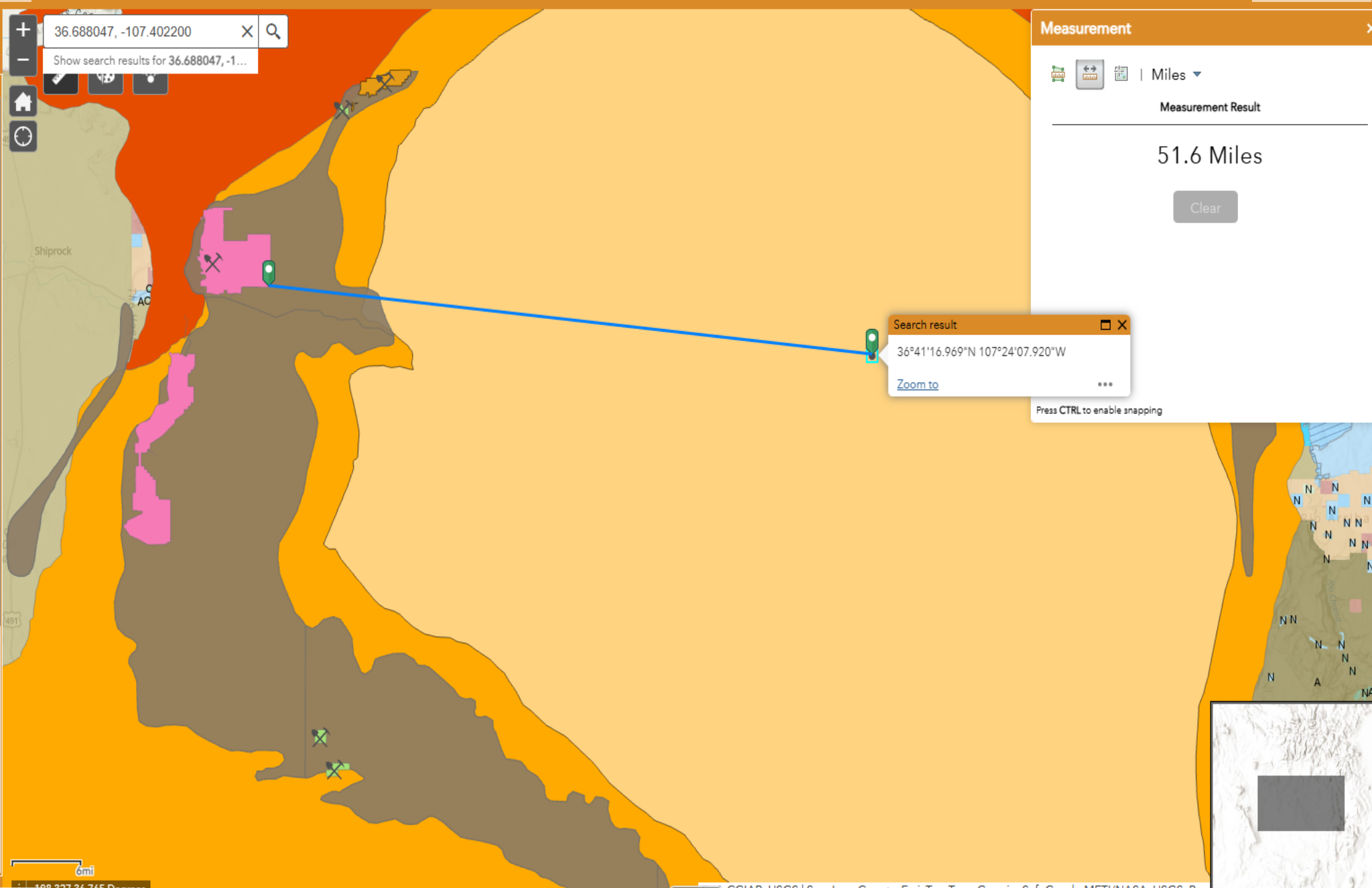
US Coal Fields

- Anthracite / potentially minable
- Medium and High Volatile Bituminous / potentially minable
- Medium and High Volatile Bituminous / other uses
- Subbituminous / potentially minable
- Subbituminous / other uses

Mineral_and_Surface_Ownership

Land Ownership

- BLM
- BOR
- DOD
- DOE
- FS
- FWS
- I
- NPS
- P
- S
- CCF



Search result

36°41'16.969"N 107°24'07.920"W

[Zoom to](#)

Press CTRL to enable snapping

Measurement

Miles

Measurement Result

51.6 Miles

Clear

6mi 108.327 36.765 Degrees

National Flood Hazard Layer FIRMette



107°24'27"W 36°41'31"N



Legend

SEE FIS REPORT FOR DETAILED LEGEND AND INDEX MAP FOR FIRM PANEL LAYOUT

- | | | |
|------------------------------------|--|--|
| SPECIAL FLOOD HAZARD AREAS | | Without Base Flood Elevation (BFE)
<i>Zone A, V, A99</i> |
| | | With BFE or Depth <i>Zone AE, AO, AH, VE, AR</i> |
| | | Regulatory Floodway |
| OTHER AREAS OF FLOOD HAZARD | | 0.2% Annual Chance Flood Hazard, Areas of 1% annual chance flood with average depth less than one foot or with drainage areas of less than one square mile <i>Zone X</i> |
| | | Future Conditions 1% Annual Chance Flood Hazard <i>Zone X</i> |
| | | Area with Reduced Flood Risk due to Levee. See Notes. <i>Zone X</i> |
| | | Area with Flood Risk due to Levee <i>Zone D</i> |
| OTHER AREAS | | NO SCREEN Area of Minimal Flood Hazard <i>Zone X</i> |
| | | Effective LOMRs |
| GENERAL STRUCTURES | | Area of Undetermined Flood Hazard <i>Zone D</i> |
| | | Channel, Culvert, or Storm Sewer |
| | | Levee, Dike, or Floodwall |
| OTHER FEATURES | | 20.2 Cross Sections with 1% Annual Chance
17.5 Water Surface Elevation |
| | | Coastal Transect |
| | | Base Flood Elevation Line (BFE) |
| | | Limit of Study |
| | | Jurisdiction Boundary |
| MAP PANELS | | Digital Data Available |
| | | No Digital Data Available |
| | | Unmapped |
| | | The pin displayed on the map is an approximate point selected by the user and does not represent an authoritative property location. |



This map complies with FEMA's standards for the use of digital flood maps if it is not void as described below. The basemap shown complies with FEMA's basemap accuracy standards

The flood hazard information is derived directly from the authoritative NFHL web services provided by FEMA. This map was exported on **12/15/2025 at 2:38 PM** and does not reflect changes or amendments subsequent to this date and time. The NFHL and effective information may change or become superseded by new data over time.

This map image is void if the one or more of the following map elements do not appear: basemap imagery, flood zone labels, legend, scale bar, map creation date, community identifiers, FIRM panel number, and FIRM effective date. Map images for unmapped and unmodernized areas cannot be used for regulatory purposes.

Sante Fe Main Office
Phone: (505) 476-3441

General Information
Phone: (505) 629-6116

Online Phone Directory
<https://www.emnrd.nm.gov/ocd/contact-us>

State of New Mexico
Energy, Minerals and Natural Resources
Oil Conservation Division
1220 S. St Francis Dr.
Santa Fe, NM 87505

QUESTIONS

Action 546723

QUESTIONS

Operator: Harvest Four Corners, LLC 1755 Arroyo Dr Bloomfield, NM 87413	OGRID: 373888
	Action Number: 546723
	Action Type: [C-141] Remediation Closure Request C-141 (C-141-v-Closure)

QUESTIONS

Prerequisites	
Incident ID (n#)	nAPP2529349366
Incident Name	NAPP2529349366 EL CEDRO @ FCS00000000082
Incident Type	Produced Water Release
Incident Status	Remediation Closure Report Received
Incident Facility	[fCS00000000082] EL CEDRO CS

Location of Release Source	
<i>Please answer all the questions in this group.</i>	
Site Name	EL CEDRO
Date Release Discovered	10/15/2025
Surface Owner	Private

Incident Details	
<i>Please answer all the questions in this group.</i>	
Incident Type	Produced Water Release
Did this release result in a fire or is the result of a fire	No
Did this release result in any injuries	No
Has this release reached or does it have a reasonable probability of reaching a watercourse	No
Has this release endangered or does it have a reasonable probability of endangering public health	No
Has this release substantially damaged or will it substantially damage property or the environment	No
Is this release of a volume that is or may with reasonable probability be detrimental to fresh water	No

Nature and Volume of Release	
<i>Material(s) released, please answer all that apply below. Any calculations or specific justifications for the volumes provided should be attached to the follow-up C-141 submission.</i>	
Crude Oil Released (bbls) Details	Not answered.
Produced Water Released (bbls) Details	Cause: Overflow - Tank, Pit, Etc. Tank (Any) Produced Water Released: 10 BBL Recovered: 10 BBL Lost: 0 BBL.
Is the concentration of chloride in the produced water >10,000 mg/l	No
Condensate Released (bbls) Details	Not answered.
Natural Gas Vented (Mcf) Details	Not answered.
Natural Gas Flared (Mcf) Details	Not answered.
Other Released Details	Not answered.
Are there additional details for the questions above (i.e. any answer containing Other, Specify, Unknown, and/or Fire, or any negative lost amounts)	Wastewater tank overflowed due to excessive amount of rain received. Compressor skid drains drain into the tank causing the tank to overflow. The tank was emptied on 10/13/2025 to prepare for incoming weather. All liquids were contained inside concrete berm.

Sante Fe Main Office
Phone: (505) 476-3441

General Information
Phone: (505) 629-6116

Online Phone Directory
<https://www.emnrd.nm.gov/ocd/contact-us>

State of New Mexico
Energy, Minerals and Natural Resources
Oil Conservation Division
1220 S. St Francis Dr.
Santa Fe, NM 87505

QUESTIONS, Page 2

Action 546723

QUESTIONS (continued)

Operator: Harvest Four Corners, LLC 1755 Arroyo Dr Bloomfield, NM 87413	OGRID: 373888
	Action Number: 546723
	Action Type: [C-141] Remediation Closure Request C-141 (C-141-v-Closure)

QUESTIONS

Nature and Volume of Release (continued)	
Is this a gas only submission (i.e. only significant Mcf values reported)	No, according to supplied volumes this does not appear to be a "gas only" report.
Was this a major release as defined by Subsection A of 19.15.29.7 NMAC	No
Reasons why this would be considered a submission for a notification of a major release	<i>Unavailable.</i>
<i>With the implementation of the 19.15.27 NMAC (05/25/2021), venting and/or flaring of natural gas (i.e. gas only) are to be submitted on the C-129 form.</i>	

Initial Response

The responsible party must undertake the following actions immediately unless they could create a safety hazard that would result in injury.

The source of the release has been stopped	True
The impacted area has been secured to protect human health and the environment	True
Released materials have been contained via the use of berms or dikes, absorbent pads, or other containment devices	True
All free liquids and recoverable materials have been removed and managed appropriately	True
If all the actions described above have not been undertaken, explain why	<i>Not answered.</i>

Per Paragraph (4) of Subsection B of 19.15.29.8 NMAC the responsible party may commence remediation immediately after discovery of a release. If remediation has begun, please prepare and attach a narrative of actions to date in the follow-up C-141 submission. If remedial efforts have been successfully completed or if the release occurred within a lined containment area (see Subparagraph (a) of Paragraph (5) of Subsection A of 19.15.29.11 NMAC), please prepare and attach all information needed for closure evaluation in the follow-up C-141 submission.

I hereby certify that the information given above is true and complete to the best of my knowledge and understand that pursuant to OCD rules and regulations all operators are required to report and/or file certain release notifications and perform corrective actions for releases which may endanger public health or the environment. The acceptance of a C-141 report by the OCD does not relieve the operator of liability should their operations have failed to adequately investigate and remediate contamination that pose a threat to groundwater, surface water, human health or the environment. In addition, OCD acceptance of a C-141 report does not relieve the operator of responsibility for compliance with any other federal, state, or local laws and/or regulations.

I hereby agree and sign off to the above statement	Name: Andrew Garbarini Title: Environmental Specialist Email: agarbarini@harvestmidstream.com Date: 01/27/2026
--	---

Sante Fe Main Office
Phone: (505) 476-3441

General Information
Phone: (505) 629-6116

Online Phone Directory
<https://www.emnrd.nm.gov/ocd/contact-us>

State of New Mexico
Energy, Minerals and Natural Resources
Oil Conservation Division
1220 S. St Francis Dr.
Santa Fe, NM 87505

QUESTIONS, Page 3

Action 546723

QUESTIONS (continued)

Operator: Harvest Four Corners, LLC 1755 Arroyo Dr Bloomfield, NM 87413	OGRID: 373888
	Action Number: 546723
	Action Type: [C-141] Remediation Closure Request C-141 (C-141-v-Closure)

QUESTIONS

Site Characterization

Please answer all the questions in this group (only required when seeking remediation plan approval and beyond). This information must be provided to the appropriate district office no later than 90 days after the release discovery date.

What is the shallowest depth to groundwater beneath the area affected by the release in feet below ground surface (ft bgs)	Between 51 and 75 (ft.)
What method was used to determine the depth to ground water	NM OSE iWaters Database Search
Did this release impact groundwater or surface water	No
What is the minimum distance, between the closest lateral extents of the release and the following surface areas:	
A continuously flowing watercourse or any other significant watercourse	Between 100 and 200 (ft.)
Any lakebed, sinkhole, or playa lake (measured from the ordinary high-water mark)	Between 200 and 300 (ft.)
An occupied permanent residence, school, hospital, institution, or church	Between 1000 (ft.) and ½ (mi.)
A spring or a private domestic fresh water well used by less than five households for domestic or stock watering purposes	Between 1000 (ft.) and ½ (mi.)
Any other fresh water well or spring	Greater than 5 (mi.)
Incorporated municipal boundaries or a defined municipal fresh water well field	Greater than 5 (mi.)
A wetland	Between 100 and 200 (ft.)
A subsurface mine	Greater than 5 (mi.)
An (non-karst) unstable area	Greater than 5 (mi.)
Categorize the risk of this well / site being in a karst geology	None
A 100-year floodplain	Between 100 and 200 (ft.)
Did the release impact areas not on an exploration, development, production, or storage site	No

Remediation Plan

Please answer all the questions that apply or are indicated. This information must be provided to the appropriate district office no later than 90 days after the release discovery date.

Requesting a remediation plan approval with this submission	Yes
<i>Attach a comprehensive report demonstrating the lateral and vertical extents of soil contamination associated with the release have been determined, pursuant to 19.15.29.11 NMAC and 19.15.29.13 NMAC.</i>	
Have the lateral and vertical extents of contamination been fully delineated	Yes
Was this release entirely contained within a lined containment area	Yes
<i>Per Subsection B of 19.15.29.11 NMAC unless the site characterization report includes completed efforts at remediation, the report must include a proposed remediation plan in accordance with 19.15.29.12 NMAC, which includes the anticipated timelines for beginning and completing the remediation.</i>	
On what estimated date will the remediation commence	12/08/2025
On what date will (or did) the final sampling or liner inspection occur	01/22/2026
On what date will (or was) the remediation complete(d)	01/22/2026
What is the estimated surface area (in square feet) that will be remediated	900
What is the estimated volume (in cubic yards) that will be remediated	0

These estimated dates and measurements are recognized to be the best guess or calculation at the time of submission and may (be) change(d) over time as more remediation efforts are completed.

The OCD recognizes that proposed remediation measures may have to be minimally adjusted in accordance with the physical realities encountered during remediation. If the responsible party has any need to significantly deviate from the remediation plan proposed, then it should consult with the division to determine if another remediation plan submission is required.

Sante Fe Main Office
Phone: (505) 476-3441

General Information
Phone: (505) 629-6116

Online Phone Directory
<https://www.emnrd.nm.gov/ocd/contact-us>

**State of New Mexico
Energy, Minerals and Natural Resources
Oil Conservation Division
1220 S. St Francis Dr.
Santa Fe, NM 87505**

QUESTIONS, Page 4

Action 546723

QUESTIONS (continued)

Operator: Harvest Four Corners, LLC 1755 Arroyo Dr Bloomfield, NM 87413	OGRID: 373888
	Action Number: 546723
	Action Type: [C-141] Remediation Closure Request C-141 (C-141-v-Closure)

QUESTIONS

Remediation Plan (continued)

Please answer all the questions that apply or are indicated. This information must be provided to the appropriate district office no later than 90 days after the release discovery date.

This remediation will (or is expected to) utilize the following processes to remediate / reduce contaminants:

(Select all answers below that apply.)

Is (or was) there affected material present needing to be removed	No
Is (or was) there a power wash of the lined containment area (to be) performed	Yes
OTHER (Non-listed remedial process)	Yes
Other Non-listed Remedial Process. Please specify	Concrete containment was scrubbed with degreaser.

Per Subsection B of 19.15.29.11 NMAC unless the site characterization report includes completed efforts at remediation, the report must include a proposed remediation plan in accordance with 19.15.29.12 NMAC, which includes the anticipated timelines for beginning and completing the remediation.

I hereby certify that the information given above is true and complete to the best of my knowledge and understand that pursuant to OCD rules and regulations all operators are required to report and/or file certain release notifications and perform corrective actions for releases which may endanger public health or the environment. The acceptance of a C-141 report by the OCD does not relieve the operator of liability should their operations have failed to adequately investigate and remediate contamination that pose a threat to groundwater, surface water, human health or the environment. In addition, OCD acceptance of a C-141 report does not relieve the operator of responsibility for compliance with any other federal, state, or local laws and/or regulations.

I hereby agree and sign off to the above statement	Name: Andrew Garbarini Title: Environmental Specialist Email: agarbarini@harvestmidstream.com Date: 01/27/2026
--	---

The OCD recognizes that proposed remediation measures may have to be minimally adjusted in accordance with the physical realities encountered during remediation. If the responsible party has any need to significantly deviate from the remediation plan proposed, then it should consult with the division to determine if another remediation plan submission is required.

Sante Fe Main Office
Phone: (505) 476-3441

General Information
Phone: (505) 629-6116

Online Phone Directory
<https://www.emnrd.nm.gov/ocd/contact-us>

State of New Mexico
Energy, Minerals and Natural Resources
Oil Conservation Division
1220 S. St Francis Dr.
Santa Fe, NM 87505

QUESTIONS, Page 6

Action 546723

QUESTIONS (continued)

Operator: Harvest Four Corners, LLC 1755 Arroyo Dr Bloomfield, NM 87413	OGRID: 373888
	Action Number: 546723
	Action Type: [C-141] Remediation Closure Request C-141 (C-141-v-Closure)

QUESTIONS

Liner Inspection Information	
Last liner inspection notification (C-141L) recorded	544264
Liner inspection date pursuant to Subparagraph (a) of Paragraph (5) of Subsection A of 19.15.29.11 NMAC	01/22/2026
Was all the impacted materials removed from the liner	Yes
What was the liner inspection surface area in square feet	900

Remediation Closure Request	
<i>Only answer the questions in this group if seeking remediation closure for this release because all remediation steps have been completed.</i>	
Requesting a remediation closure approval with this submission	Yes
Have the lateral and vertical extents of contamination been fully delineated	Yes
Was this release entirely contained within a lined containment area	Yes
What was the total surface area (in square feet) remediated	900
What was the total volume (cubic yards) remediated	0
Summarize any additional remediation activities not included by answers (above)	All liquids were contained inside a concrete containment. All liquids were sucked up; containment was scrubbed and power washed.

The responsible party must attach information demonstrating they have complied with all applicable closure requirements and any conditions or directives of the OCD. This demonstration should be in the form of a comprehensive report (in .pdf format) including a scaled site map, sampling diagrams, relevant field notes, photographs of any excavation prior to backfilling, laboratory data including chain of custody documents of final sampling, and a narrative of the remedial activities. Refer to 19.15.29.12 NMAC.

I hereby certify that the information given above is true and complete to the best of my knowledge and understand that pursuant to OCD rules and regulations all operators are required to report and/or file certain release notifications and perform corrective actions for releases which may endanger public health or the environment. The acceptance of a C-141 report by the OCD does not relieve the operator of liability should their operations have failed to adequately investigate and remediate contamination that pose a threat to groundwater, surface water, human health or the environment. In addition, OCD acceptance of a C-141 report does not relieve the operator of responsibility for compliance with any other federal, state, or local laws and/or regulations. The responsible party acknowledges they must substantially restore, reclaim, and re-vegetate the impacted surface area to the conditions that existed prior to the release or their final land use in accordance with 19.15.29.13 NMAC including notification to the OCD when reclamation and re-vegetation are complete.

I hereby agree and sign off to the above statement	Name: Andrew Garbarini Title: Environmental Specialist Email: agarbarini@harvestmidstream.com Date: 01/27/2026
--	--

Sante Fe Main Office
Phone: (505) 476-3441

General Information
Phone: (505) 629-6116

Online Phone Directory
<https://www.emnrd.nm.gov/ocd/contact-us>

State of New Mexico
Energy, Minerals and Natural Resources
Oil Conservation Division
1220 S. St Francis Dr.
Santa Fe, NM 87505

CONDITIONS

Action 546723

CONDITIONS

Operator: Harvest Four Corners, LLC 1755 Arroyo Dr Bloomfield, NM 87413	OGRID: 373888
	Action Number: 546723
	Action Type: [C-141] Remediation Closure Request C-141 (C-141-v-Closure)

CONDITIONS

Created By	Condition	Condition Date
scwells	None	2/23/2026