



Big N Tasty Tank Battery

Incident ID NAPP2502334914

PREPARED BY:
PIMA ENVIRONMENTAL SERVICES, LLC

PREPARED FOR:
Spur Energy

Liner Inspection and Closure Report

January 11, 2026



Pima Environmental Services
5614 N. Lovington Highway
Hobbs, NM 88240
575-964-7740

FACILITY NAME	Big N Tasty CTB
DATE OF RELEASE	1/19/2025
INCIDENT NO.	nAPP2502334914

Site Characterization	
DTGW What is the shallowest DTGW beneath the area affected by the release in ft below ground surface (ft bgs)	Between 100 and 500 ft.
GW Depth Determination What method was used to determine the DTGW?	NM OSE iWaters Database Search
Ground or Surface Water Impacted Did this release impact GW or Surface Water?	No
What is the min. distance between the closest lateral extents of the release and the following surace areas?	
Distance to Watercourse A continuously flowing watercourse or any other significant watercourse?	Between 500 ft and 1/2 mi.
Distance to Lake bedAny lakebed, sinkhole, or playa lake (measured from the ordinary high-water mark)?	Between 500 ft and 1/2 mi.
Distance to Public An occupied permanent residence, school, hospital, institution, or church?	> 5 mi.
Distance to Private A spring or a private domestic FW well used by less than five households for domestic or stock watering purposes?	> 5 mi.
Distance to Fresh Water Any other FW well spring?	> 5 mi.
Within Municipal Boundaries Incorporated municipal boundaries or a defined municipal FW well field?	> 5 mi.
Distance to Wetland A wetland?	Between 500 ft and 1/2 mi.
Overlying Subsurface Mine A subsurface mine?	> 5 mi.
Overlying (Non-Karst) Unstable Area An (non-karst) unstable area?	> 5 mi.
Risk of Karst Geology Catergorize the risk of this well/site being in a karst geology?	Low
Distance to or Within 100 yr Floodplain A 100-year floodplain?	> 5 mi.
Areas NOT Other Site Did the release impact areas not on exploration, development, production, or storage site?	No
Remediation Plan	
Have the lateral and vertical extents of contamination been fully delineated?	Yes
Lined Containment Area Only Was this release entirely contained within a lined containment area?	Yes
Soil Containment Sampling (EPA 300.00 or SM4500 Cl B?)	
Chloride Constituent Chloride (mg/kg)	0
(EPA SW-846 Method 8015M)?	
TPH (GRO+DRO+MRO) Constituent TPH (mg/kg)	0
(EPA SW-846 Method 8015M)?	
GRO + DRO Constituent GRO-DRO (mg/kg)	0
(EPA SW-846 Method 8021B or 8260B)?	
BTEX Constituent BTEX (mg/kg)	0
(EPA SW-846 Method 8021B or 8260B)?	
Benzene Constituent Benzene (mg/kg)	0
Per Subsection B of 19.15.29.11 NMAC unless the site characterization report includes competed efforts at remediation, the report must include a proposed remediation plan in accordance with 19.15.29 NMAC, which includes the anticipated timelines for beginning and completing the remediation.	
Start of Remediation On what estimated date will remediation commence?	1/28/2025
Start of Sampling or Liner Inspection On what date will (or did) the final sampling or liner inspection occur?	1/28/2025
Finish of Remediation On what date will (or was) the remediation complete(d)?	1/28/2025
Surface Area (sq ft) To Be Reclaimed What is the esitmated surface area (in sq ft) that will be reclaimed?	0
Surface Area (sq ft) To Be Remediated What is the estimated surface are (in sq ft) that will be remediated?	6,800
Volume (cu yd) To Be Remediated What is the estimated volume (in cubic yds) that will be remediated?	0
Remediation Plan (Cont.)Please answer all that apply	
Ex Situ Excavation Off-Site (Ex Situ) Excavation and off-site disposal (i.e. dig and haul, hydrovac, etc)?	No
Ex Situ Excavation On-Site (Ex Situ) Excavation and on-site remediation (i.e. On-Site Land Farms)?	No
In Situ Soil Vapor Extraction (SVE)?	No
In Situ Chemical Processing (In Situ) Chemical processing (i.e. Soil Shredding, Potassium Permanganate, etc.)?	No
In Situ Biological Processing (In Situ) Biological processing (i.e. Microbes/Fertilizer, etc.)?	No
In Situ Physical Processing (In Situ) Physical processing (i.e. Soil Washing, Gypsum, Disking, etc.)?	No
In Situ Ground Water Abatement GW Abatement pursuant to 19.15.30 NMAC?	No
Remediation Other Other (Non-listed remedial process)?	No
Deferral Request Only	
Requesting a deferral of the remediation closure due date with the approval of this submission	No

Remediation Closure Request (Only answer the questions in this group if seeking remediation closure for this release because all remediation steps have been completed)	
Requesting a remediation closure approval with this submission?	Yes
Have the lateral and vertical extents of contamination been fully delineated?	Yes
Was this release entirely contained within a lined containment area?	Yes
Restored Areas For Production Use All areas reasonably needed for production or subsequent drilling operations have been stabilized, returned to the sites existing grade, and have a soil cover that prevents ponding of water, minimizing dust and erosion?	Yes
Total Surface Area (sq ft) Remediated What was the total surface area (sq ft) remediated?	6,800
Total Volume (cu yd) Remediated What was the total volume (cubic yards) remediated?	0
Reclaimed to Condition Prior Release All areas not reasonably needed for production or subsequent drilling operations have been reclaimed to contain a minimum of four ft of non-waste contain earthen material with concentrations less than 600 mg/kg chlorides, 100 mg/kg TPH, 50 mg/kg BTEX and 10 mg/kg Benzene?	Yes
Total Surface Area (sq ft) Reclaimed What was the total surface area (in sq ft) reclaimed?	0
Remediation Summary Summarize any additional remediation activities not included by answers (above).	The liner was power washed to remove surface staining, ensuring a clean and clear inspection surface. A comprehensive liner inspection was then conducted to assess its integrity and confirm that it remained structurally sound and free of any defects or compromises.



Pima Environmental Services
5614 N. Lovington Highway
Hobbs, NM 88240
575-964-7740

January 11, 2026

NMOCD District 2
811 S. First St
Artesia, NM, 88210

Bureau of Land Management
620 East Green Street
Carlsbad, NM 88220

RE: Liner Inspection and Closure Report
Big N Tasty Tank Battery
API No. 30-015-4796
GPS: Latitude 32.860213 Longitude -103.848620
UL- L, Section 02, Township 17S, Range 31E
NMOCD Reference No. NAPP2502334914

Spur Energy Partners (Spur) has contracted Pima Environmental Services, LLC (Pima) to perform a liner inspection and prepare this closure report for the release of crude oil and produced water that happened on the Big N Tasty Tank Battery (BNT). An initial C-141 was submitted on January 23, 2025. This incident was assigned Incident ID NAPP2502334914, by the New Mexico Oil Conservation Division (NMOCD).

Response to Rejection

During the submission of the initial NOR and C-141, a discrepancy was identified in the reported GPS coordinates. The originally provided coordinates corresponded to the wellhead rather than the designated tank battery containment. The precise and accurate coordinates for the tank battery containment are 32.860213, -103.848620.

Furthermore, we affirm that the decontamination and high-pressure cleansing of the lined containment were executed in accordance with established protocols at the battery.

All minimum distance measurements outlined in the Site Characterization section of the C-141 application—including proximity to significant watercourses, lakebeds, sinkholes, playa lakes, and the 100-year floodplain—have been thoroughly reviewed and confirmed to be accurate. As a result, no recalculations or adjustments are necessary. The existing data remains valid and in compliance with regulatory requirements, ensuring the accuracy and integrity of the submitted application.

Site Information and Site Characterization

BNT is located approximately 5.01 miles northwest of Maljamar, NM. This spill site is in Unit L, Section 02, Township 17S, Range 31E, Latitude 32.860213 Longitude -103.848620, Eddy County, NM. A Location Map can be found in Figure 1.

Based on the well water data from the New Mexico Office of the State Engineer, the depth to the nearest groundwater in this vicinity measures 101 feet below grade surface (BGS), positioned roughly 0.29 miles away from the BNT, drilled on October 10, 2024. Conversely, as per the United States Geological Survey well water data, the nearest groundwater depth in this region is recorded at 122.14 feet BGS, situated approximately 4.27 miles away from the BNT, with the last gauge conducted on December 11, 2010. For detailed references to water surveys and the precise locations of water wells, please refer to Appendix A, inclusive of the relevant maps. Notably, BNT is situated within an area with a low potential for karst, as illustrated in Figure 3. Additionally, a comprehensive Topographic Map is available for reference in Figure 2.

Release Information

NAPP2502334914: On January 19, 2025, freezing temperatures caused a valve to break, resulting in the release of approximately 2 barrels of crude oil and 20 barrels of produced water into a 6,800-square-foot lined containment area. Immediate action was taken to halt the release, and a vacuum truck was promptly dispatched to the site. The truck successfully recovered all standing fluids, which remained fully contained within the lined area.

A Site Map can be found in Figure 4.

Site Assessment and Liner Inspection

On January 24, 2025, Spur personnel submitted a notification for a liner inspection, adhering to the necessary 48-hour notice period. The details of the 48-hour notification can be referenced in Appendix C.

On January 28, 2024, Pima Environmental conducted a thorough inspection of the lined containment area. The evaluation process included cleaning the liner with a power washer and using a vacuum truck to ensure the complete removal of any residual fluids. The inspection confirmed that the system remained intact and successfully retained all fluids. As a result, the liner was deemed functional, preventing any further environmental impact. A detailed report, including photographic evidence, is provided in Appendices C and D.

Closure Request

After careful review, Pima requests that this incident NAPP2502334914 be closed. Spur has complied with the applicable closure requirements.

For questions or additional information, please feel free to contact:
Spur Energy – Katherine Purvis at 575-441-8619 or katherine.purvis@spurenergy.com
Pima Environmental Services – Sebastian Orozco at 619-721-4813 or Sebastian@pimaoil.com.

Attachments

Figures:

- 1- Location Map
- 2- Topographic Map
- 3- Karst Map
- 4- Site Map

Appendices:

- Appendix A- Referenced Water Surveys
- Appendix B- Soil Survey, Geological Data, FEMA Flood Map, Wetland Map
- Appendix C-48 Hour Notification and Liner Inspection Form
- Appendix D- Photographic Documentation

Figures:

Figure 1- Location Map

Figure 2- Topographic Map



Figure 3- Karst Map

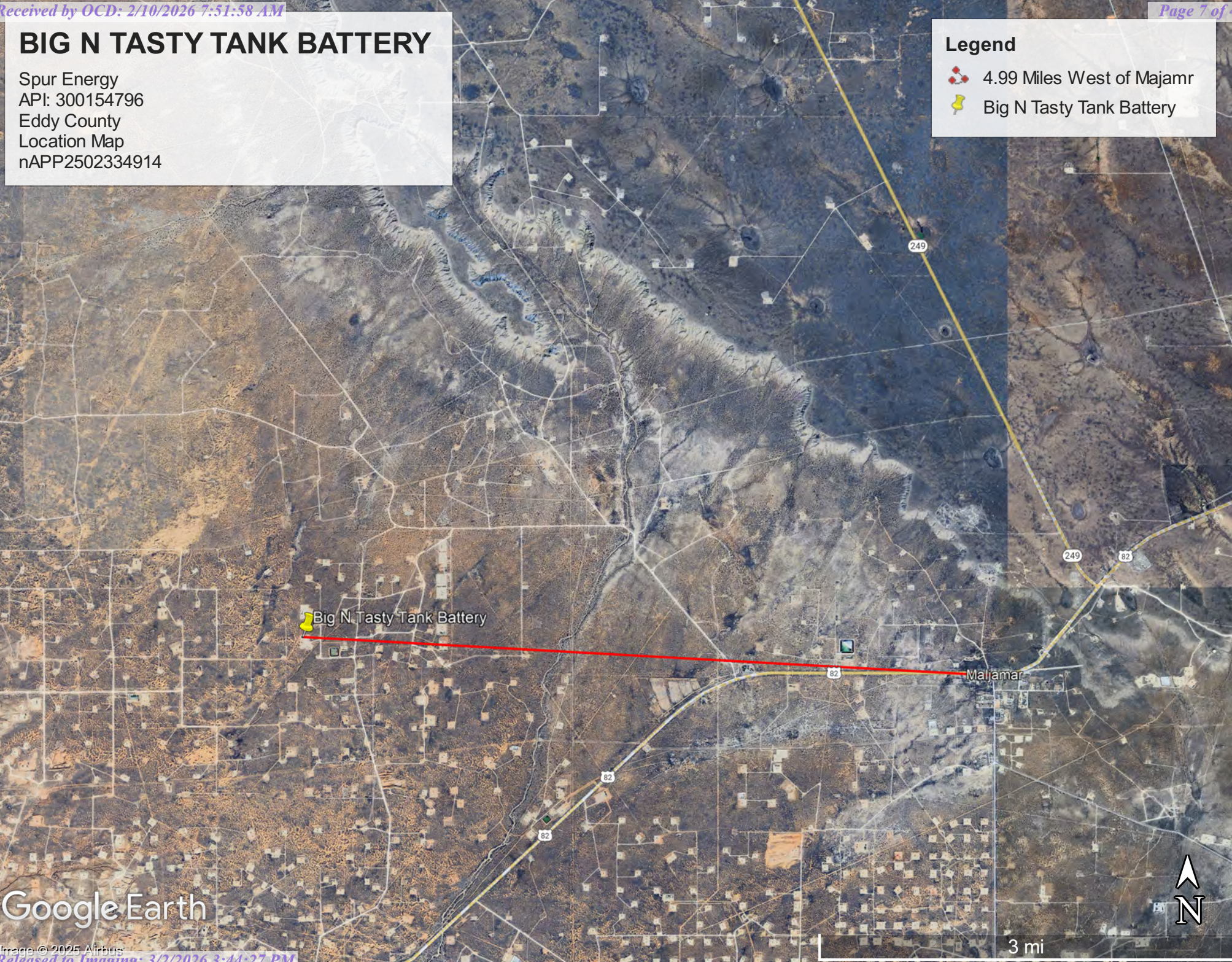
Figure 4- Site Map

BIG N TASTY TANK BATTERY

Spur Energy
API: 300154796
Eddy County
Location Map
nAPP2502334914

Legend

-  4.99 Miles West of Majamr
-  Big N Tasty Tank Battery




Google Earth

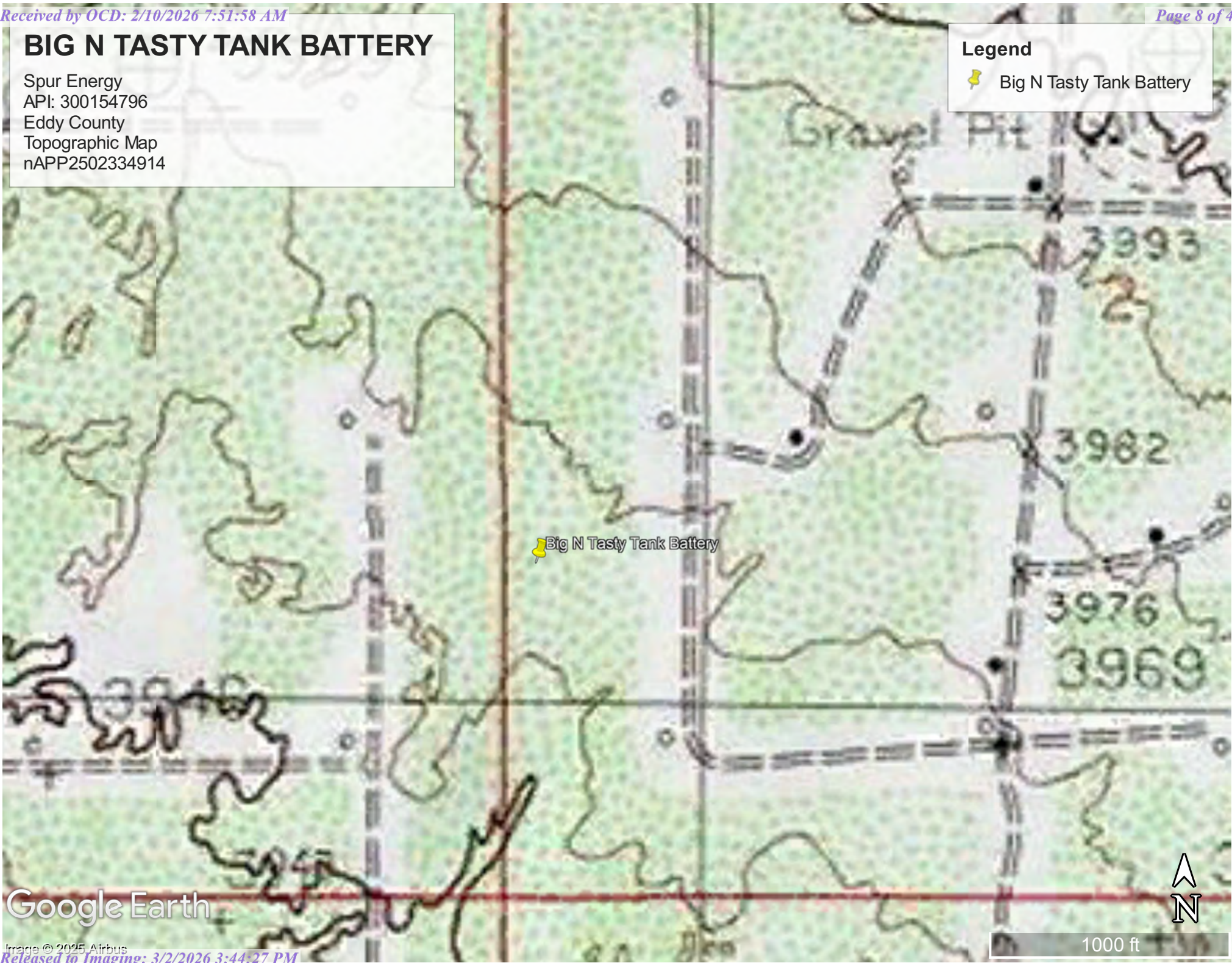
3 mi

BIG N TASTY TANK BATTERY

Spur Energy
API: 300154796
Eddy County
Topographic Map
nAPP2502334914

Legend

-  Big N Tasty Tank Battery







Google Earth

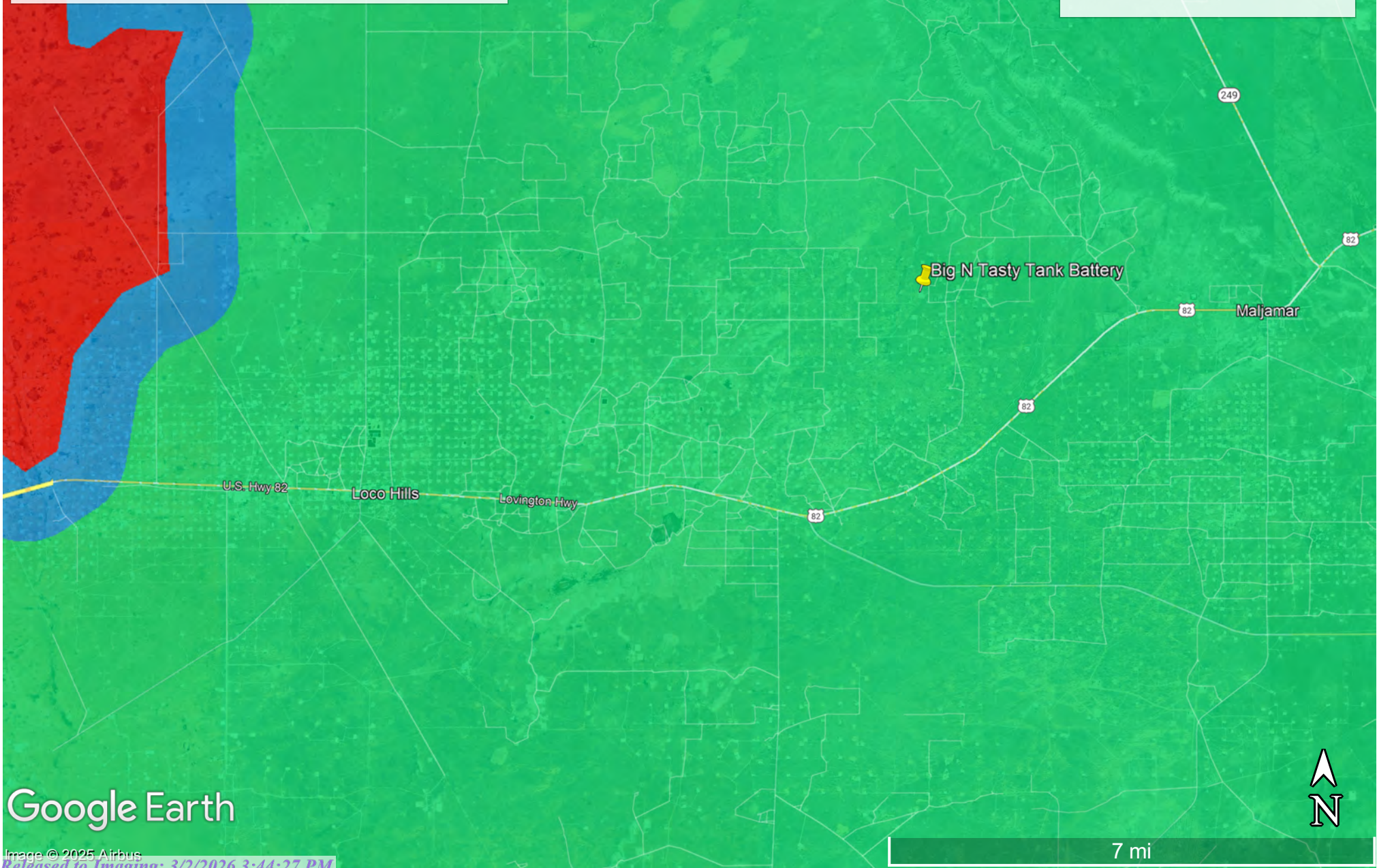
1000 ft

BIG N TASTY TANK BATTERY

Spur Energy
API: 300154796
Eddy County
Karst Map
nAPP2502334914

Legend


-  Big N Tasty Tank Battery
-  High Karst
-  Low Karst
-  Medium Karst

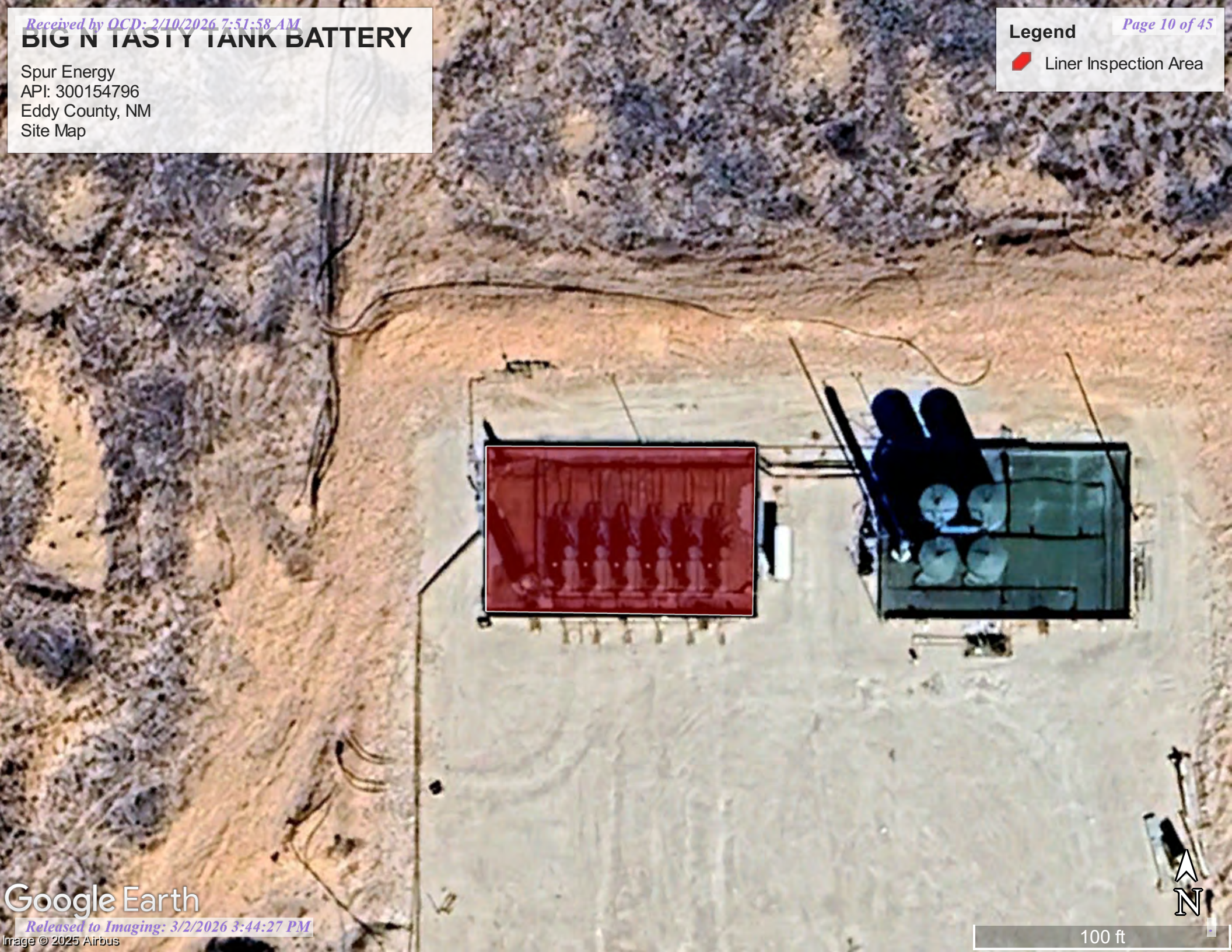


Google Earth

BIG N TASTY TANK BATTERY

Spur Energy
API: 300154796
Eddy County, NM
Site Map

 Liner Inspection Area



Appendix A


Water Surveys:

- OSE
- USGS
- Surface Water Map

Point of Diversion Summary

quarters are 1=NW 2=NE 3=SW 4=SE
quarters are smallest to largest

NAD83 UTM in meters

Well Tag	POD Nbr	Q64	Q16	Q4	Sec	Tws	Rng	X	Y	Map
NA	RA 13509 POD1	NW	SE	SW	02	17S	31E	608178.5	3636269.7	

* UTM location was derived from PLSS - see Help

Driller License:	1249	Driller Company:	ATKINS ENGINEERING ASSOC. INC.		
Driller Name:	JACKIE D ATKINS				
Drill Start Date:	2024-10-10	Drill Finish Date:	2024-10-14	Plug Date:	2024-11-06
Log File Date:	2024-11-19	PCW Rcv Date:		Source:	
Pump Type:		Pipe Discharge Size:		Estimated Yield:	
Casing Size:		Depth Well:	101	Depth Water:	

The data is furnished by the NMOSE/ISC and is accepted by the recipient with the expressed understanding that the OSE/ISC make no warranties, expressed or implied, concerning the accuracy, completeness, reliability, usability, or suitability for any particular purpose of the data.

1/27/25 9:28 AM MST




Point of Diversion Summary

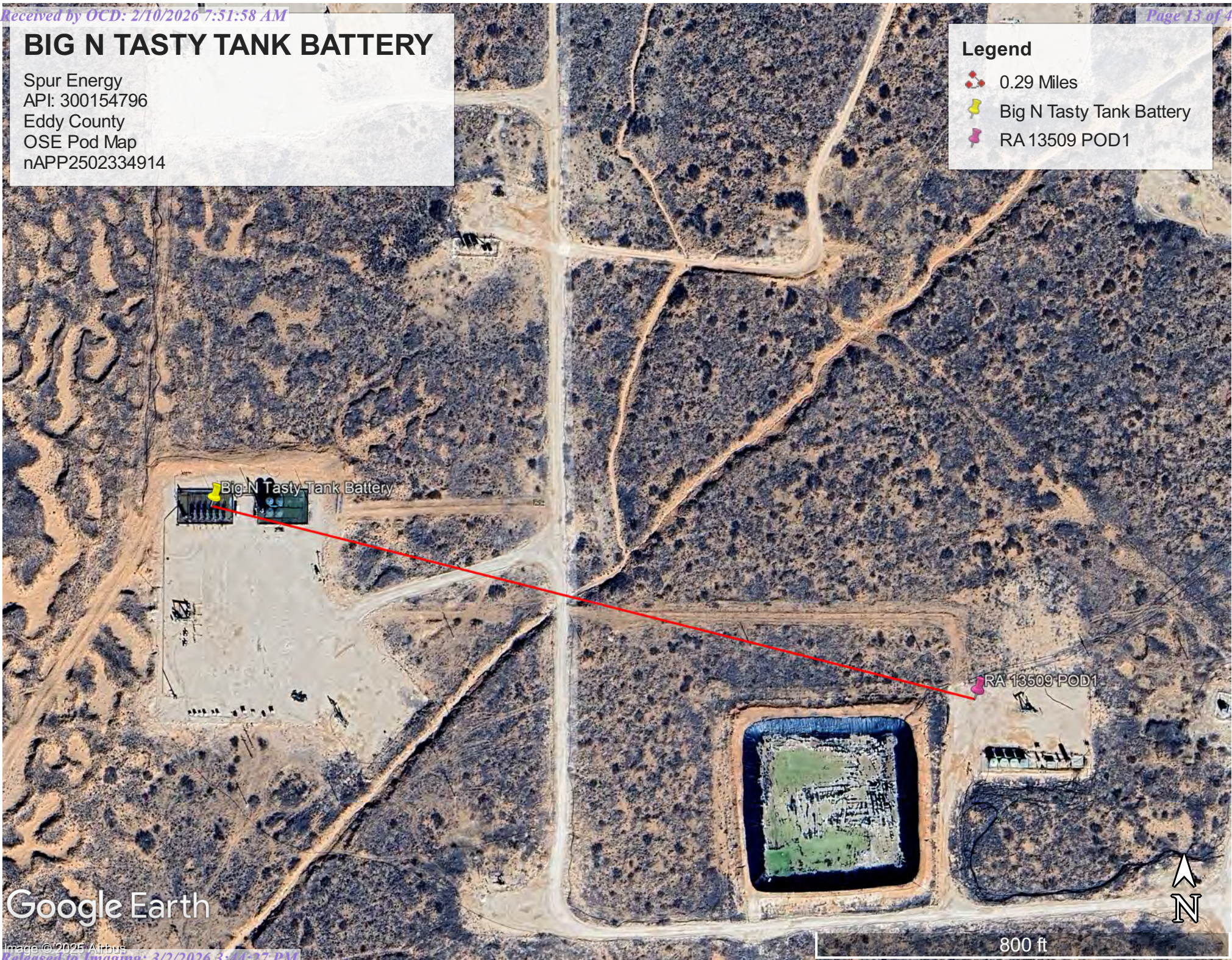
©2024 New Mexico Office of the State Engineer, All Rights Reserved. | [Disclaimer](#) | [Contact Us](#) | [Help](#) | [Home](#) |

BIG N TASTY TANK BATTERY

Spur Energy
API: 300154796
Eddy County
OSE Pod Map
nAPP2502334914

Legend

-  0.29 Miles
-  Big N Tasty Tank Battery
-  RA 13509 POD1



Google Earth



USGS Home
Contact USGS
Search USGS

National Water Information System: Web Interface

USGS Water Resources

Data Category: Geographic Area:

Click to hide News Bulletins

- Explore the *NEW* [USGS National Water Dashboard](#) interactive map to access real-time water data from over 13,500 stations nationwide.

Groundwater levels for the Nation

i Important: [Next Generation Monitoring Location Page](#)

Search Results -- 1 sites found

site_no list =
• 325223103462501

Minimum number of levels = 1

[Save file of selected sites](#) to local disk for future upload

USGS 325223103462501 16S.32E.33.33212

Available data for this site

Lea County, New Mexico

Hydrologic Unit Code 13060011

Latitude 32°52'26", Longitude 103°46'37" NAD27

Land-surface elevation 4,196.00 feet above NGVD29

This well is completed in the High Plains aquifer (N100HGHPN) national aquifer.

This well is completed in the Ogallala Formation (121OGLL) local aquifer.

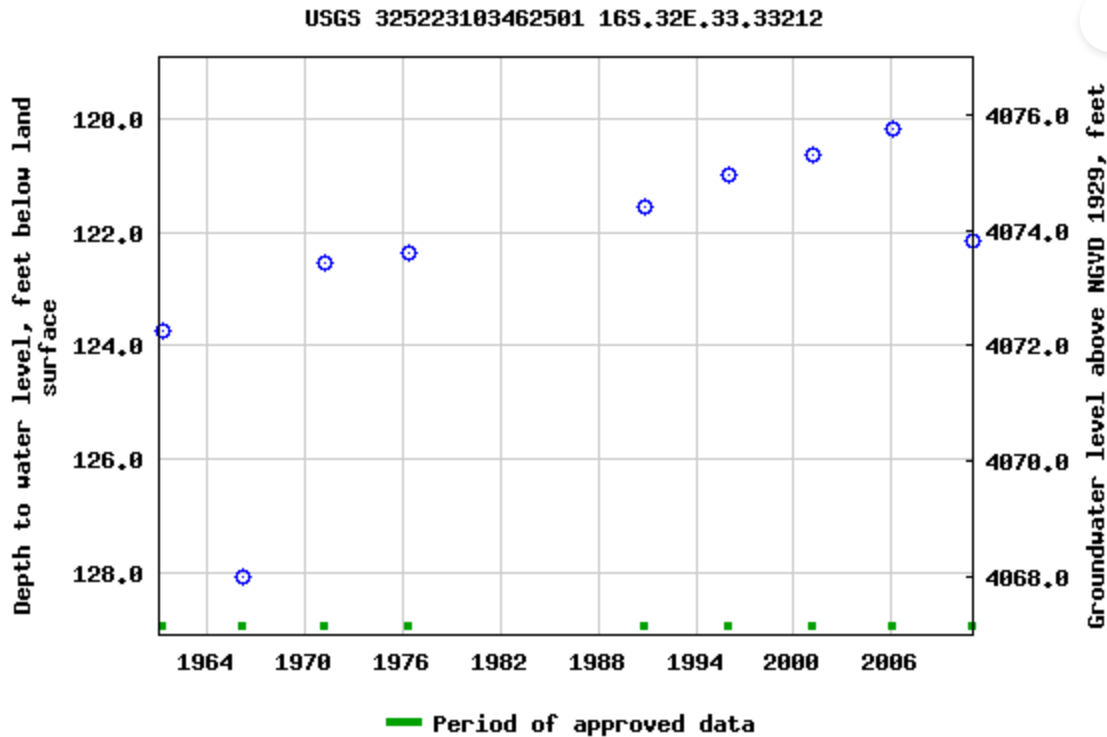
Output formats

[Table of data](#)

[Tab-separated data](#)

[Graph of data](#)

[Reselect period](#)



Breaks in the plot represent a gap of at least one year between field measurements.

[Download a presentation-quality graph](#)

[Questions or Comments](#)

[Help](#)

[Data Tips](#)

[Explanation of terms](#)

[Subscribe for system changes](#)

[Accessibility](#)

[FOIA](#)

[Privacy](#)

[Policies and Notices](#)

[U.S. Department of the Interior](#) | [U.S. Geological Survey](#)

Title: Groundwater for USA: Water Levels

URL: <https://nwis.waterdata.usgs.gov/nwis/gwlevels?>



Page Contact Information: [USGS Water Data Support Team](#)




Page Last Modified: 2025-01-27 11:21:28 EST

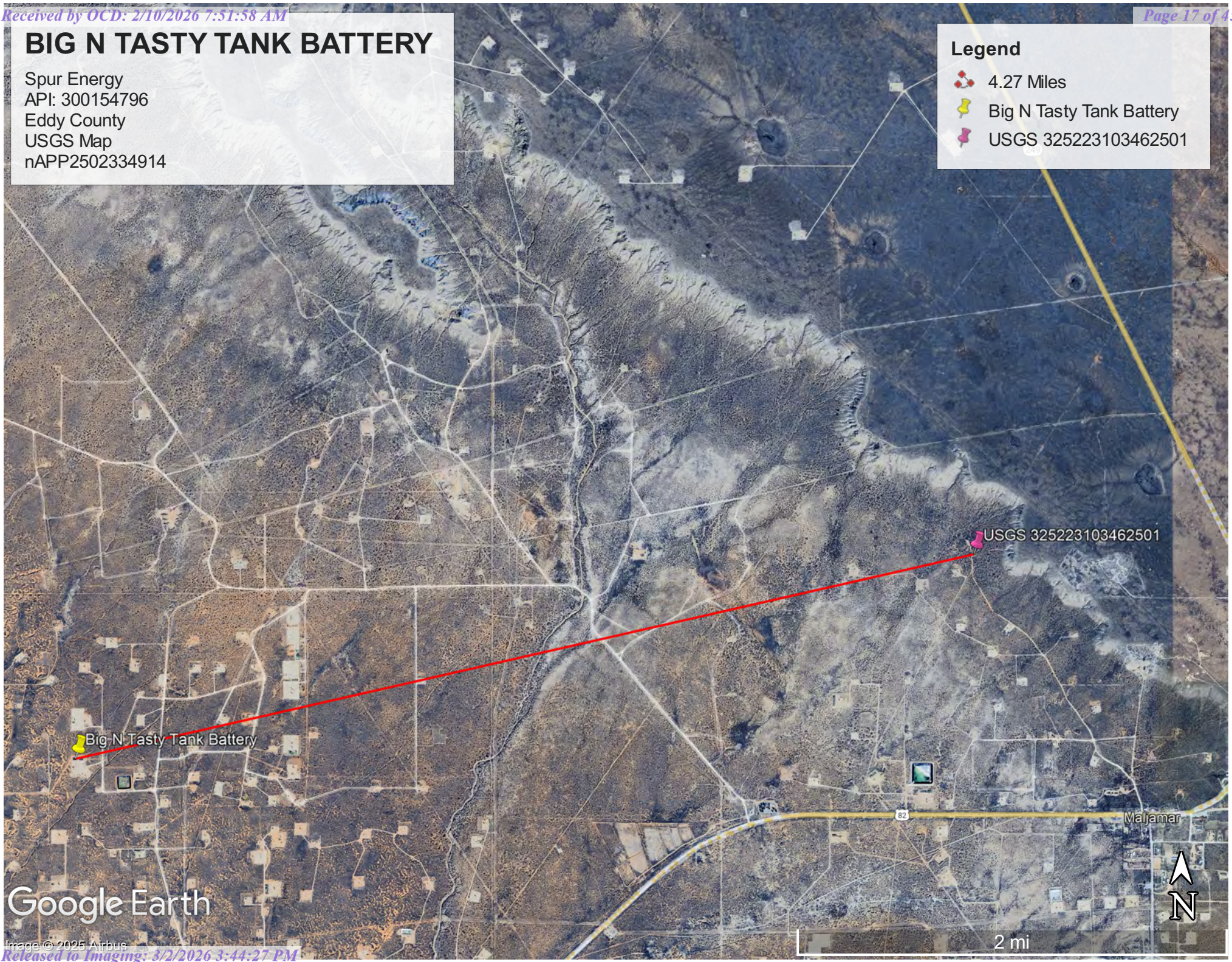
0.72 0.53 nadww02

BIG N TASTY TANK BATTERY

Spur Energy
API: 300154796
Eddy County
USGS Map
nAPP2502334914

Legend

-  4.27 Miles
-  Big N Tasty Tank Battery
-  USGS 325223103462501



Big N Tasty Tank Battery

USGS 325223103462501

Google Earth




2 mi

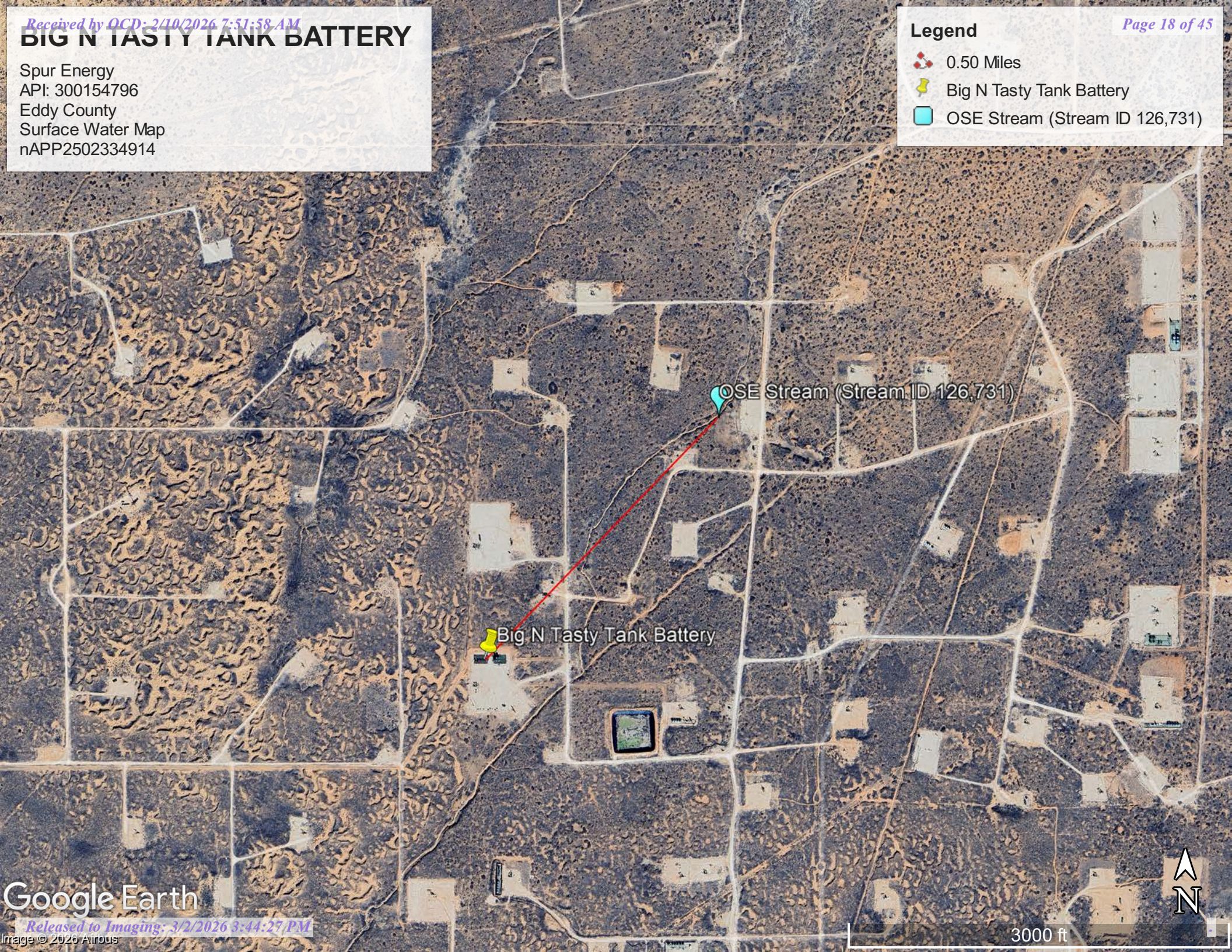


BIG N TASTY TANK BATTERY

Spur Energy
API: 300154796
Eddy County
Surface Water Map
nAPP2502334914

Legend

-  0.50 Miles
-  Big N Tasty Tank Battery
-  OSE Stream (Stream ID 126,731)



Appendix B

- Soil Survey & Soil Maps
- Geological Data
- FEMA Flood Map
- Wetlands Map

Map Unit Description: Kermit-Berino fine sands, 0 to 3 percent slopes---Eddy Area, New Mexico

Eddy Area, New Mexico

KM—Kermit-Berino fine sands, 0 to 3 percent slopes

Map Unit Setting

National map unit symbol: 1w4q
Elevation: 3,100 to 4,200 feet
Mean annual precipitation: 10 to 14 inches
Mean annual air temperature: 60 to 64 degrees F
Frost-free period: 190 to 230 days
Farmland classification: Not prime farmland

Map Unit Composition

Kermit and similar soils: 50 percent
Berino and similar soils: 35 percent
Minor components: 15 percent
Estimates are based on observations, descriptions, and transects of the mapunit.

Description of Kermit

Setting

Landform: Plains, alluvial fans
Landform position (three-dimensional): Talf, rise
Down-slope shape: Convex, linear
Across-slope shape: Linear
Parent material: Mixed alluvium and/or eolian sands

Typical profile

H1 - 0 to 7 inches: fine sand
H2 - 7 to 60 inches: fine sand

Properties and qualities

Slope: 0 to 3 percent
Depth to restrictive feature: More than 80 inches
Drainage class: Excessively drained
Runoff class: Negligible
Capacity of the most limiting layer to transmit water (Ksat): Very high (20.00 in/hr)
Depth to water table: More than 80 inches
Frequency of flooding: None
Frequency of ponding: None
Maximum salinity: Nonsaline (0.0 to 1.0 mmhos/cm)
Sodium adsorption ratio, maximum: 1.0
Available water supply, 0 to 60 inches: Low (about 3.1 inches)

Interpretive groups

Land capability classification (irrigated): None specified
Land capability classification (nonirrigated): 7e
Hydrologic Soil Group: A
Ecological site: R070BD005NM - Deep Sand
Hydric soil rating: No

Map Unit Description: Kermit-Berino fine sands, 0 to 3 percent slopes---Eddy Area, New Mexico

Description of Berino

Setting

Landform: Plains, fan piedmonts
Landform position (three-dimensional): Riser
Down-slope shape: Convex
Across-slope shape: Linear
Parent material: Mixed alluvium and/or eolian sands

Typical profile

H1 - 0 to 17 inches: fine sand
H2 - 17 to 50 inches: fine sandy loam
H3 - 50 to 58 inches: loamy sand

Properties and qualities

Slope: 0 to 3 percent
Depth to restrictive feature: More than 80 inches
Drainage class: Well drained
Runoff class: Low
Capacity of the most limiting layer to transmit water (Ksat): Moderately high to high (0.60 to 2.00 in/hr)
Depth to water table: More than 80 inches
Frequency of flooding: None
Frequency of ponding: None
Calcium carbonate, maximum content: 40 percent
Maximum salinity: Very slightly saline to slightly saline (2.0 to 4.0 mmhos/cm)
Sodium adsorption ratio, maximum: 1.0
Available water supply, 0 to 60 inches: Moderate (about 7.2 inches)

Interpretive groups

Land capability classification (irrigated): 4e
Land capability classification (nonirrigated): 7e
Hydrologic Soil Group: B
Ecological site: R070BD003NM - Loamy Sand
Hydric soil rating: No

Minor Components

Active dune land

Percent of map unit: 15 percent
Hydric soil rating: No

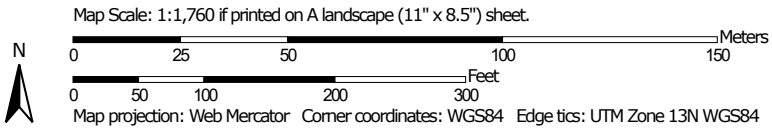
Data Source Information

Soil Survey Area: Eddy Area, New Mexico
Survey Area Data: Version 20, Sep 3, 2024

Soil Map—Eddy Area, New Mexico




Soil Map may not be valid at this scale.




Soil Map—Eddy Area, New Mexico


MAP LEGEND

Area of Interest (AOI)

 Area of Interest (AOI)




















Soils







 Soil Map Unit Polygons

 Soil Map Unit Lines


 Soil Map Unit Points

Special Point Features






-  Blowout
-  Borrow Pit
-  Clay Spot
-  Closed Depression
-  Gravel Pit
-  Gravelly Spot
-  Landfill
-  Lava Flow
-  Marsh or swamp
-  Mine or Quarry
-  Miscellaneous Water
-  Perennial Water
-  Rock Outcrop
-  Saline Spot
-  Sandy Spot
-  Severely Eroded Spot
-  Sinkhole
-  Slide or Slip
-  Sodic Spot

-  Spoil Area
-  Stony Spot
-  Very Stony Spot
-  Wet Spot
-  Other
-  Special Line Features


Water Features

 Streams and Canals

Transportation

-  Rails
-  Interstate Highways
-  US Routes
-  Major Roads
-  Local Roads

Background

 Aerial Photography

MAP INFORMATION

The soil surveys that comprise your AOI were mapped at 1:20,000.

Warning: Soil Map may not be valid at this scale.
Enlargement of maps beyond the scale of mapping can cause misunderstanding of the detail of mapping and accuracy of soil line placement. The maps do not show the small areas of contrasting soils that could have been shown at a more detailed scale.

Please rely on the bar scale on each map sheet for map measurements.

Source of Map: Natural Resources Conservation Service
Web Soil Survey URL:
Coordinate System: Web Mercator (EPSG:3857)

Maps from the Web Soil Survey are based on the Web Mercator projection, which preserves direction and shape but distorts distance and area. A projection that preserves area, such as the Albers equal-area conic projection, should be used if more accurate calculations of distance or area are required.

This product is generated from the USDA-NRCS certified data as of the version date(s) listed below.

Soil Survey Area: Eddy Area, New Mexico
Survey Area Data: Version 20, Sep 3, 2024

Soil map units are labeled (as space allows) for map scales 1:50,000 or larger.

Date(s) aerial images were photographed: Feb 7, 2020—May 12, 2020

The orthophoto or other base map on which the soil lines were compiled and digitized probably differs from the background imagery displayed on these maps. As a result, some minor shifting of map unit boundaries may be evident.

Soil Map—Eddy Area, New Mexico

Map Unit Legend

Map Unit Symbol	Map Unit Name	Acres in AOI	Percent of AOI
BB	Berino complex, 0 to 3 percent slopes, eroded	0.1	0.6%
KM	Kermit-Berino fine sands, 0 to 3 percent slopes	13.5	99.4%
Totals for Area of Interest		13.6	100.0%

(<https://www.usgs.gov/>)

Mineral Resources (<https://www.usgs.gov/energy-and-minerals/mineral-resources-program>)
 / Online Spatial Data (/) / Geology (/geology/) / by state (/geology/state/)
 / New Mexico (/geology/state/state.php?state=NM)

Eolian and piedmont deposits

XML (/geology/state/xml/NMQep;0)	JSON (/geology/state/json/NMQep;0)
Shapefile (/geology/state/unit-shape.php?unit=NMQep;0)	

Interlayered eolian sands and piedmont-slope deposits along the eastern flank of the Pecos River valley, primarily between Roswell and Carlsbad. Typically capped by thin eolian deposits.

State	New Mexico (/geology/state/state.php?state=NM)
Name	Eolian and piedmont deposits
Geologic age	Holocene to middle Pleistocene
Lithologic constituents	Major Unconsolidated (Eolian) <i>Interlayered eolian sands and piedmont-slope deposits</i>
References	New Mexico Bureau of Geology and Mineral Resources, 2003, Geologic Map of New Mexico, scale 1:500,000 (includes some new polygons, faults, and attributes not in NM001 - heads up digitizing by JHorton).
NGMDB product	NGMDB product page for 22974 (https://ngmdb.usgs.gov/Prodesc/proddesc_22974.htm)
Counties	Chaves (/geology/state/fips-unit.php?code=f35005) - DeBaca (/geology/state/fips-unit.php?code=f35011) - Eddy (/geology/state/fips-unit.php?code=f35015) - Lea (/geology/state/fips-unit.php?code=f35025) - Roosevelt (/geology/state/fips-unit.php?code=f35041)

DOI Privacy Policy (<https://www.doi.gov/privacy>) | Legal (https://www.usgs.gov/laws/policies_notices.html) |
 Accessibility (<https://www2.usgs.gov/laws/accessibility.html>) | Site Map (<https://www.usgs.gov/sitemap.html>) |
 Contact USGS (<https://answers.usgs.gov/>)

U.S. Department of the Interior (<https://www.doi.gov/>) | DOI Inspector General (<https://www.doiog.gov/>) |




White House (<https://www.whitehouse.gov/>) | E-gov (<https://www.whitehouse.gov/omb/management/egov/>) |

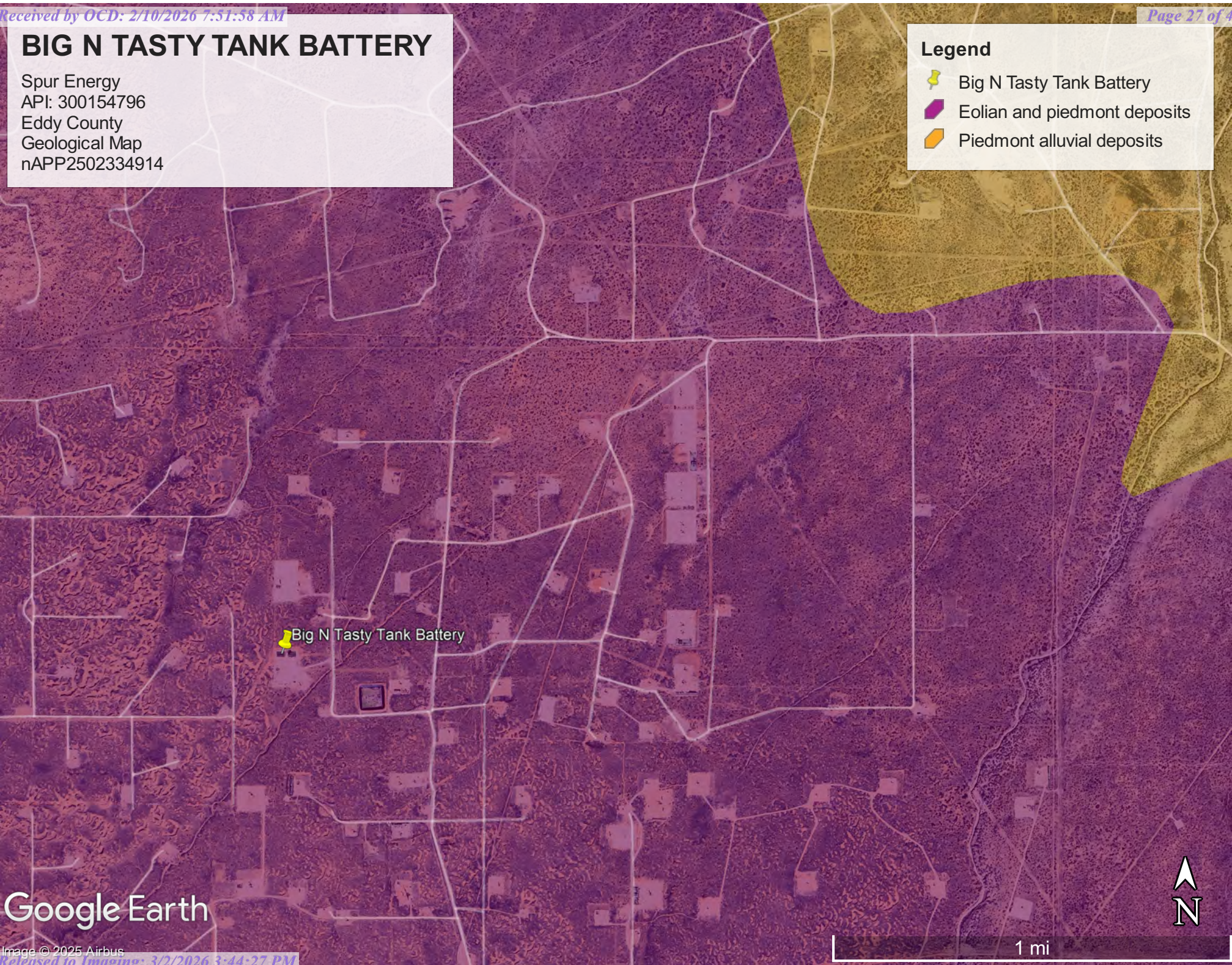
No Fear Act (<https://www.doi.gov/pmb/eeo/no-fear-act>) | FOIA (<https://www2.usgs.gov/foia>)

BIG N TASTY TANK BATTERY

Spur Energy
API: 300154796
Eddy County
Geological Map
nAPP2502334914

Legend

-  Big N Tasty Tank Battery
-  Eolian and piedmont deposits
-  Piedmont alluvial deposits



Google Earth

Image © 2025 Airbus



1 mi

National Flood Hazard Layer FIRMette



103°51'14"W 32°51'52"N



Legend

SEE FIS REPORT FOR DETAILED LEGEND AND INDEX MAP FOR FIRM PANEL LAYOUT

- SPECIAL FLOOD HAZARD AREAS**
 - Without Base Flood Elevation (BFE) Zone A, V, A99
 - With BFE or Depth Zone AE, AO, AH, VE, AR
 - Regulatory Floodway
- OTHER AREAS OF FLOOD HAZARD**
 - 0.2% Annual Chance Flood Hazard, Areas of 1% annual chance flood with average depth less than one foot or with drainage areas of less than one square mile Zone X
 - Future Conditions 1% Annual Chance Flood Hazard Zone X
 - Area with Reduced Flood Risk due to Levee. See Notes. Zone X
 - Area with Flood Risk due to Levee Zone D
- OTHER AREAS**
 - NO SCREEN Area of Minimal Flood Hazard Zone X
 - Effective LOMRs
 - Area of Undetermined Flood Hazard Zone D
- GENERAL STRUCTURES**
 - Channel, Culvert, or Storm Sewer
 - Levee, Dike, or Floodwall
- OTHER FEATURES**
 - Cross Sections with 1% Annual Chance Water Surface Elevation
 - Coastal Transect
 - Base Flood Elevation Line (BFE)
 - Limit of Study
 - Jurisdiction Boundary
 - Coastal Transect Baseline
 - Profile Baseline
 - Hydrographic Feature
- MAP PANELS**
 - Digital Data Available
 - No Digital Data Available
 - Unmapped



The pin displayed on the map is an approximate point selected by the user and does not represent an authoritative property location.

This map complies with FEMA's standards for the use of digital flood maps if it is not void as described below. The basemap shown complies with FEMA's basemap accuracy standards

The flood hazard information is derived directly from the authoritative NFHL web services provided by FEMA. This map was exported on 1/27/2025 at 4:39 PM and does not reflect changes or amendments subsequent to this date and time. The NFHL and effective information may change or become superseded by new data over time.

This map image is void if the one or more of the following map elements do not appear: basemap imagery, flood zone labels, legend, scale bar, map creation date, community identifiers, FIRM panel number, and FIRM effective date. Map images for unmapped and unmodernized areas cannot be used for regulatory purposes.



1:6,000

103°50'36"W 32°51'22"N











Wetlands Map



January 27, 2025

Wetlands

- | | | |
|--|---|--|
|  Estuarine and Marine Deepwater |  Freshwater Emergent Wetland |  Lake |
|  Estuarine and Marine Wetland |  Freshwater Forested/Shrub Wetland |  Other |
| |  Freshwater Pond |  Riverine |

This map is for general reference only. The US Fish and Wildlife Service is not responsible for the accuracy or currentness of the base data shown on this map. All wetlands related data should be used in accordance with the layer metadata found on the Wetlands Mapper web site.

Appendix C

- 48-Hour Notification

- Liner Inspection Form

Sebastian@pimaoil.com

From: OCDOnline@state.nm.us
Sent: Friday, January 24, 2025 9:48 AM
To: sebastian@pimaoil.com
Subject: The Oil Conservation Division (OCD) has accepted the application, Application ID: 424483

To whom it may concern (c/o Sebastian Orozco for Spur Energy Partners LLC),

The OCD has received the submitted *Notification for Liner Inspection for a Release* (C-141L), for incident ID (n#) nAPP2502334914.

The liner inspection is expected to take place:

When: 01/28/2025 @ 12:00

Where: L-02-17S-31E 0 FNL 0 FEL (32.86266,-103.84873)

Additional Information: Marisa Loya
575-416-0639

Additional Instructions: 32.860203, -103.848676

An OCD representative may be available onsite at the date and time reported. In the absence or presence of an OCD representative, liner inspection pursuant to 19.15.29.11.A(5)(a) NMAC is required. Should there be a change in the scheduled date and time of the sampling event, then another notification should be resubmitted through OCD permitting as soon as possible.

- **Failure to notify the OCD of liner inspections including any changes in date/time per the requirements of 19.15.29.11.A(5)(a)(ii) NMAC, may result in the inspection not being accepted.**

If you have any questions regarding this application, or don't know why you have received this email, please contact us.

New Mexico Energy, Minerals and Natural Resources Department
1220 South St. Francis Drive
Santa Fe, NM 87505



Pima Environmental Services, LLC

Liner Inspection Form

Company Name: Spur Energy

Site: BIG N TASTY TANK BATTERY

Lat/Long: 32.86266,-103.8487

NMOCD Incident ID & Incident Date: NAPP2502334914 01/23/2025

2-Day Notification Sent: via Email by Sebastian Orozco on OCD portal 01/24/2025

Inspection Date: 01/28/2025

Liner Type: Earthen w/liner Earthen no liner Polystar
 Steel w/poly liner Steel w/spray epoxy No Liner

Other: _____

Visualization	Yes	No	Comments
Is there a tear in the liner?		X	
Are there holes in the liner?		X	
Is the liner retaining any fluids?	X		Residual liquid is visible in the photo log from the power washing cleaning event.
Does the liner have integrity to contain a leak?	X		

Comments: _____

Inspector Name: Marisa Loya Inspector Signature: Marisa Loya

Appendix D

- Photographic Documentation



PHOTOGRAPHIC DOCUMENTATION

SITE NAME: Big N Tasty CTB

Initial Liner Inspection :



Photo of liner taken prior to power washing facing North.



Photo of liner taken prior to power washing facing West.



Photo of liner taken prior to power washing facing Northeast.



Photo of liner taken prior to power washing facing South.



Photo of liner taken prior to power washing facing South.



Photo of liner taken prior to power washing facing West.



PHOTOGRAPHIC DOCUMENTATION

SITE NAME: Big N Tasty CTB

Pre- Powerwash Photos :



Aerial photos prior to powerwash.



Aerial photos prior to powerwash.



Aerial photos prior to powerwash.



Aerial photos prior to powerwash.

PHOTOGRAPHIC DOCUMENTATION

SITE NAME: Big N Tasty CTB

Liner Inspection :



Photo taken pursuant to power washing facing North.



Photo taken pursuant to power washing facing North.



Photo taken pursuant to power washing facing South.



Photo taken pursuant to power washing facing East.



Photo taken pursuant to power washing facing East.



Photo taken pursuant to power washing facing South.

PHOTOGRAPHIC DOCUMENTATION

SITE NAME: Big N Tasty CTB

Post Powerwash Photos :



Aerial photo of location post power wash.



Aerial photo of location post power wash.



Aerial photo of location post power wash.



Aerial photo of location post power wash.

Sante Fe Main Office
Phone: (505) 476-3441

General Information
Phone: (505) 629-6116

Online Phone Directory
<https://www.emnrd.nm.gov/ocd/contact-us>

State of New Mexico
Energy, Minerals and Natural Resources
Oil Conservation Division
1220 S. St Francis Dr.
Santa Fe, NM 87505

QUESTIONS

Action 552170

QUESTIONS

Operator: Spur Energy Partners LLC 9655 Katy Freeway Houston, TX 77024	OGRID: 328947
	Action Number: 552170
	Action Type: [C-141] Remediation Closure Request C-141 (C-141-v-Closure)

QUESTIONS

Prerequisites	
Incident ID (n#)	nAPP2502334914
Incident Name	NAPP2502334914 BIG N TASTY TANK BATTERY @ FAPP2203357785
Incident Type	Release Other
Incident Status	Remediation Closure Report Received
Incident Facility	[fAPP2203357785] Big N Tasty State Com Tank Battery

Location of Release Source	
<i>Please answer all the questions in this group.</i>	
Site Name	BIG N TASTY TANK BATTERY
Date Release Discovered	01/19/2025
Surface Owner	State

Incident Details	
<i>Please answer all the questions in this group.</i>	
Incident Type	Release Other
Did this release result in a fire or is the result of a fire	No
Did this release result in any injuries	No
Has this release reached or does it have a reasonable probability of reaching a watercourse	No
Has this release endangered or does it have a reasonable probability of endangering public health	No
Has this release substantially damaged or will it substantially damage property or the environment	No
Is this release of a volume that is or may with reasonable probability be detrimental to fresh water	No

Nature and Volume of Release	
<i>Material(s) released, please answer all that apply below. Any calculations or specific justifications for the volumes provided should be attached to the follow-up C-141 submission.</i>	
Crude Oil Released (bbls) Details	Cause: Freeze Valve Crude Oil Released: 2 BBL Recovered: 2 BBL Lost: 0 BBL.
Produced Water Released (bbls) Details	Cause: Freeze Valve Produced Water Released: 20 BBL Recovered: 20 BBL Lost: 0 BBL.
Is the concentration of chloride in the produced water >10,000 mg/l	Yes
Condensate Released (bbls) Details	Not answered.
Natural Gas Vented (Mcf) Details	Not answered.
Natural Gas Flared (Mcf) Details	Not answered.
Other Released Details	Not answered.
Are there additional details for the questions above (i.e. any answer containing Other, Specify, Unknown, and/or Fire, or any negative lost amounts)	FREEZING TEMPERATURES CAUSED A VALVE TO BREAK AND RELEASE OIL AND PW INTO LINED CONTAINMENT

Sante Fe Main Office
Phone: (505) 476-3441

General Information
Phone: (505) 629-6116

Online Phone Directory
<https://www.emnrd.nm.gov/ocd/contact-us>

State of New Mexico
Energy, Minerals and Natural Resources
Oil Conservation Division
1220 S. St Francis Dr.
Santa Fe, NM 87505

QUESTIONS, Page 2

Action 552170

QUESTIONS (continued)

Operator: Spur Energy Partners LLC 9655 Katy Freeway Houston, TX 77024	OGRID: 328947
	Action Number: 552170
	Action Type: [C-141] Remediation Closure Request C-141 (C-141-v-Closure)

QUESTIONS

Nature and Volume of Release (continued)	
Is this a gas only submission (i.e. only significant Mcf values reported)	No, according to supplied volumes this does not appear to be a "gas only" report.
Was this a major release as defined by Subsection A of 19.15.29.7 NMAC	No
Reasons why this would be considered a submission for a notification of a major release	<i>Unavailable.</i>
<i>With the implementation of the 19.15.27 NMAC (05/25/2021), venting and/or flaring of natural gas (i.e. gas only) are to be submitted on the C-129 form.</i>	

Initial Response

The responsible party must undertake the following actions immediately unless they could create a safety hazard that would result in injury.

The source of the release has been stopped	True
The impacted area has been secured to protect human health and the environment	True
Released materials have been contained via the use of berms or dikes, absorbent pads, or other containment devices	True
All free liquids and recoverable materials have been removed and managed appropriately	True
If all the actions described above have not been undertaken, explain why	N/A

Per Paragraph (4) of Subsection B of 19.15.29.8 NMAC the responsible party may commence remediation immediately after discovery of a release. If remediation has begun, please prepare and attach a narrative of actions to date in the follow-up C-141 submission. If remedial efforts have been successfully completed or if the release occurred within a lined containment area (see Subparagraph (a) of Paragraph (5) of Subsection A of 19.15.29.11 NMAC), please prepare and attach all information needed for closure evaluation in the follow-up C-141 submission.

I hereby certify that the information given above is true and complete to the best of my knowledge and understand that pursuant to OCD rules and regulations all operators are required to report and/or file certain release notifications and perform corrective actions for releases which may endanger public health or the environment. The acceptance of a C-141 report by the OCD does not relieve the operator of liability should their operations have failed to adequately investigate and remediate contamination that pose a threat to groundwater, surface water, human health or the environment. In addition, OCD acceptance of a C-141 report does not relieve the operator of responsibility for compliance with any other federal, state, or local laws and/or regulations.

I hereby agree and sign off to the above statement	Name: Katherine Purvis Title: EHS Coordinator Email: katherine.purvis@spurenergy.com Date: 02/10/2026
--	---

Sante Fe Main Office
Phone: (505) 476-3441

General Information
Phone: (505) 629-6116

Online Phone Directory
<https://www.emnrd.nm.gov/ocd/contact-us>

State of New Mexico
Energy, Minerals and Natural Resources
Oil Conservation Division
1220 S. St Francis Dr.
Santa Fe, NM 87505

QUESTIONS, Page 3

Action 552170

QUESTIONS (continued)

Operator: Spur Energy Partners LLC 9655 Katy Freeway Houston, TX 77024	OGRID: 328947
	Action Number: 552170
	Action Type: [C-141] Remediation Closure Request C-141 (C-141-v-Closure)

QUESTIONS

Site Characterization
Please answer all the questions in this group (only required when seeking remediation plan approval and beyond). This information must be provided to the appropriate district office no later than 90 days after the release discovery date.

What is the shallowest depth to groundwater beneath the area affected by the release in feet below ground surface (ft bgs)	Between 100 and 500 (ft.)
What method was used to determine the depth to ground water	NM OSE iWaters Database Search
Did this release impact groundwater or surface water	No
What is the minimum distance, between the closest lateral extents of the release and the following surface areas:	
A continuously flowing watercourse or any other significant watercourse	Between 500 and 1000 (ft.)
Any lakebed, sinkhole, or playa lake (measured from the ordinary high-water mark)	Between 500 and 1000 (ft.)
An occupied permanent residence, school, hospital, institution, or church	Greater than 5 (mi.)
A spring or a private domestic fresh water well used by less than five households for domestic or stock watering purposes	Greater than 5 (mi.)
Any other fresh water well or spring	Greater than 5 (mi.)
Incorporated municipal boundaries or a defined municipal fresh water well field	Greater than 5 (mi.)
A wetland	Between 500 and 1000 (ft.)
A subsurface mine	Greater than 5 (mi.)
An (non-karst) unstable area	Greater than 5 (mi.)
Categorize the risk of this well / site being in a karst geology	Low
A 100-year floodplain	Greater than 5 (mi.)
Did the release impact areas not on an exploration, development, production, or storage site	No

Remediation Plan

Please answer all the questions that apply or are indicated. This information must be provided to the appropriate district office no later than 90 days after the release discovery date.

Requesting a remediation plan approval with this submission	Yes
<i>Attach a comprehensive report demonstrating the lateral and vertical extents of soil contamination associated with the release have been determined, pursuant to 19.15.29.11 NMAC and 19.15.29.13 NMAC.</i>	
Have the lateral and vertical extents of contamination been fully delineated	Yes
Was this release entirely contained within a lined containment area	Yes
<i>Per Subsection B of 19.15.29.11 NMAC unless the site characterization report includes completed efforts at remediation, the report must include a proposed remediation plan in accordance with 19.15.29.12 NMAC, which includes the anticipated timelines for beginning and completing the remediation.</i>	
On what estimated date will the remediation commence	01/28/2025
On what date will (or did) the final sampling or liner inspection occur	01/28/2025
On what date will (or was) the remediation complete(d)	01/28/2025
What is the estimated surface area (in square feet) that will be remediated	6800
What is the estimated volume (in cubic yards) that will be remediated	0

These estimated dates and measurements are recognized to be the best guess or calculation at the time of submission and may (be) change(d) over time as more remediation efforts are completed. The OCD recognizes that proposed remediation measures may have to be minimally adjusted in accordance with the physical realities encountered during remediation. If the responsible party has any need to significantly deviate from the remediation plan proposed, then it should consult with the division to determine if another remediation plan submission is required.

Sante Fe Main Office
Phone: (505) 476-3441

General Information
Phone: (505) 629-6116

Online Phone Directory
<https://www.emnrd.nm.gov/ocd/contact-us>

State of New Mexico
Energy, Minerals and Natural Resources
Oil Conservation Division
1220 S. St Francis Dr.
Santa Fe, NM 87505

QUESTIONS, Page 4

Action 552170

QUESTIONS (continued)

Operator: Spur Energy Partners LLC 9655 Katy Freeway Houston, TX 77024	OGRID: 328947
	Action Number: 552170
	Action Type: [C-141] Remediation Closure Request C-141 (C-141-v-Closure)

QUESTIONS

Remediation Plan (continued)	
<i>Please answer all the questions that apply or are indicated. This information must be provided to the appropriate district office no later than 90 days after the release discovery date.</i>	
This remediation will (or is expected to) utilize the following processes to remediate / reduce contaminants:	
<i>(Select all answers below that apply.)</i>	
Is (or was) there affected material present needing to be removed	No
Is (or was) there a power wash of the lined containment area (to be) performed	Yes
OTHER (Non-listed remedial process)	Not answered.
<i>Per Subsection B of 19.15.29.11 NMAC unless the site characterization report includes completed efforts at remediation, the report must include a proposed remediation plan in accordance with 19.15.29.12 NMAC, which includes the anticipated timelines for beginning and completing the remediation.</i>	
I hereby certify that the information given above is true and complete to the best of my knowledge and understand that pursuant to OCD rules and regulations all operators are required to report and/or file certain release notifications and perform corrective actions for releases which may endanger public health or the environment. The acceptance of a C-141 report by the OCD does not relieve the operator of liability should their operations have failed to adequately investigate and remediate contamination that pose a threat to groundwater, surface water, human health or the environment. In addition, OCD acceptance of a C-141 report does not relieve the operator of responsibility for compliance with any other federal, state, or local laws and/or regulations.	
I hereby agree and sign off to the above statement	Name: Katherine Purvis Title: EHS Coordinator Email: katherine.purvis@spurenergy.com Date: 02/10/2026
<i>The OCD recognizes that proposed remediation measures may have to be minimally adjusted in accordance with the physical realities encountered during remediation. If the responsible party has any need to significantly deviate from the remediation plan proposed, then it should consult with the division to determine if another remediation plan submission is required.</i>	

Sante Fe Main Office
Phone: (505) 476-3441

General Information
Phone: (505) 629-6116

Online Phone Directory
<https://www.emnrd.nm.gov/ocd/contact-us>

State of New Mexico
Energy, Minerals and Natural Resources
Oil Conservation Division
1220 S. St Francis Dr.
Santa Fe, NM 87505

QUESTIONS, Page 6

Action 552170

QUESTIONS (continued)

Operator: Spur Energy Partners LLC 9655 Katy Freeway Houston, TX 77024	OGRID: 328947
	Action Number: 552170
	Action Type: [C-141] Remediation Closure Request C-141 (C-141-v-Closure)

QUESTIONS

Liner Inspection Information	
Last liner inspection notification (C-141L) recorded	424483
Liner inspection date pursuant to Subparagraph (a) of Paragraph (5) of Subsection A of 19.15.29.11 NMAC	01/28/2025
Was all the impacted materials removed from the liner	Yes
What was the liner inspection surface area in square feet	6800

Remediation Closure Request	
<i>Only answer the questions in this group if seeking remediation closure for this release because all remediation steps have been completed.</i>	
Requesting a remediation closure approval with this submission	Yes
Have the lateral and vertical extents of contamination been fully delineated	Yes
Was this release entirely contained within a lined containment area	Yes
What was the total surface area (in square feet) remediated	6800
What was the total volume (cubic yards) remediated	0
Summarize any additional remediation activities not included by answers (above)	LINED CONTAINMENT WAS POWERWASHED AND INSPECTED AND FOUND TO HAVE THE ABILITY TO CONTAIN SPILLS

The responsible party must attach information demonstrating they have complied with all applicable closure requirements and any conditions or directives of the OCD. This demonstration should be in the form of a comprehensive report (in .pdf format) including a scaled site map, sampling diagrams, relevant field notes, photographs of any excavation prior to backfilling, laboratory data including chain of custody documents of final sampling, and a narrative of the remedial activities. Refer to 19.15.29.12 NMAC.

I hereby certify that the information given above is true and complete to the best of my knowledge and understand that pursuant to OCD rules and regulations all operators are required to report and/or file certain release notifications and perform corrective actions for releases which may endanger public health or the environment. The acceptance of a C-141 report by the OCD does not relieve the operator of liability should their operations have failed to adequately investigate and remediate contamination that pose a threat to groundwater, surface water, human health or the environment. In addition, OCD acceptance of a C-141 report does not relieve the operator of responsibility for compliance with any other federal, state, or local laws and/or regulations. The responsible party acknowledges they must substantially restore, reclaim, and re-vegetate the impacted surface area to the conditions that existed prior to the release or their final land use in accordance with 19.15.29.13 NMAC including notification to the OCD when reclamation and re-vegetation are complete.

I hereby agree and sign off to the above statement	Name: Katherine Purvis Title: EHS Coordinator Email: katherine.purvis@spurenergy.com Date: 02/10/2026
--	---

Sante Fe Main Office
Phone: (505) 476-3441

General Information
Phone: (505) 629-6116

Online Phone Directory
<https://www.emnrd.nm.gov/ocd/contact-us>

State of New Mexico
Energy, Minerals and Natural Resources
Oil Conservation Division
1220 S. St Francis Dr.
Santa Fe, NM 87505

CONDITIONS

Action 552170

CONDITIONS

Operator: Spur Energy Partners LLC 9655 Katy Freeway Houston, TX 77024	OGRID: 328947
	Action Number: 552170
	Action Type: [C-141] Remediation Closure Request C-141 (C-141-v-Closure)

CONDITIONS

Created By	Condition	Condition Date
scwells	Remediation closure approved with the following condition: For future releases at this site the distance to a 100-year floodplain should be updated to reflect its correct minimum distance which is between ~1.75 miles east of site.	3/2/2026