



PREPARED BY:
PIMA ENVIRONMENTAL SERVICES, LLC

PREPARED FOR:
Spur Energy

MAPLE STATE TB

Incident ID nAPP2526527439

Liner Inspection and Closure Report

February 2, 2026

FACILITY NAME	Maple State TB
DATE OF RELEASE	9/20/2025
INCIDENT NO.	NAPP2526527439



Pima Environmental Services
 5614 N. Lovington Highway
 Hobbs, NM 88240
 575-964-7740

Site Characterization	
DTGW What is the shallowest DTGW beneath the area affected by the release in ft below ground surface (ft bgs)	Between 75 and 100 ft.
GW Depth Determination What method was used to determine the DTGW?	NM OSE iWaters Database Search
Ground or Surface Water Impacted Did this release impact GW or Surface Water?	No
What is the min. distance between the closest lateral extents of the release and the following surace areas?	
Distance to Watercourse A continuously flowing watercourse or any other significant watercourse?	Between 500 ft and 1/2 mi.
Distance to Lakebed Any lakebed, sinkhole, or playa lake (measured from the ordinary high-water mark)?	Between 500 ft and 1/2 mi.
Distance to Public An occupied permanent residence, school, hospital, institution, or church?	Between 1 mi. and 5 mi.
Distance to Private A spring or a private domestic FW well used by less than five households for domestic or stock watering purposes?	Between 1/2 mi. and 1 mi.
Distance to Fresh Water Any other FW well spring?	Between 1 mi. and 5 mi.
Within Municipal Boundaries Incorporated municipal boundaries or a defined municipal FW well field?	Between 1 mi. and 5 mi.
Distance to Wetland A wetland?	Between 500 and 1000 ft.
Overlying Subsurface Mine A subsurface mine?	> 5 mi.
Overlying (Non-Karst) Unstable Area An (non-karst) unstable area?	> 5 mi.
Risk of Karst Geology Categorize the risk of this well/site being in a karst geology?	High
Distance to or Within 100 yr Floodplain A 100-year floodplain?	Between 500 ft and 1/2 mi.
Areas NOT Other Site Did the release impact areas not on exploration, development, production, or storage site?	No
Remediation Plan	
Have the lateral and vertical extents of contamination been fully delineated?	Yes
Lined Containment Area Only Was this release entirely contained within a lined containment area?	Yes
Soil Containment Sampling	
Chloride Constituent Chloride (mg/kg)	(EPA 300.00 or SM4500 Cl B?) 0
	(EPA SW-846 Method 8015M)?
TPH (GRO+DRO+MRO) Constituent TPH (mg/kg)	0
	(EPA SW-846 Method 8015M)?
GRO + DRO Constituent GRO-DRO (mg/kg)	0
	(EPA SW-846 Method 8021B or 8260B)?
BTEX Constituent BTEX (mg/kg)	0
	(EPA SW-846 Method 8021B or 8260B)?
Benzene Constituent Benzene (mg/kg)	0
Per Subsection B of 19.15.29.11 NMAC unless the site characterization report includes competed efforts at remediation, the report must include a proposed remediation plan in accordance with 19.15.29 NMAC, which includes the anticipated timelines for beginning and completing the remediation.	
Start of Remediation On what estimated date will remediation commence?	10/12/2025
Start of Sampling or Liner Inspection On what date will (or did) the final sampling or liner inspection occur?	10/16/2025
Finish of Remediation On what date will (or was) the remediation complete(d)?	10/16/2025
Surface Area (sq ft) To Be Reclaimed What is the estimated surface area (in sq ft) that will be reclaimed?	0
Surface Area (sq ft) To Be Remediated What is the estimated surface are (in sq ft) that will be remediated?	1,600
Volume (cu yd) To Be Remediated What is the estimated volume (in cubic yds) that will be remediated?	10
Remediation Plan (Cont.)	
Please answer all that apply	
Ex Situ Excavation Off-Site (Ex Situ) Excavation and off-site disposal (i.e. dig and haul, hydrovac, etc)?	No
Ex Situ Excavation On-Site (Ex Situ) Excavation and on-site remediation (i.e. On-Site Land Farms)?	No
In Situ Soil Vapor Extraction (SVE)?	No
In Situ Chemical Processing (In Situ) Chemical processing (i.e. Soil Shredding, Potassium Permanganate, etc)?	No
In Situ Biological Processing (In Situ) Biological processing (i.e. Microbes/Fertilizer, etc.)?	No
In Situ Physical Processing (In Situ) Physical processing (i.e. Soil Washing, Gypsum, Disking, etc.)?	No
In Situ Ground Water Abatement GW Abatement pursuant to 19.15.30 NMAC?	No
Remediation Other Other (Non-listed remedial process)?	No
Deferral Request Only	
Requesting a deferral of the remediation closure due date with the approval of this submission	No

FACILITY NAME	Maple State TB
DATE OF RELEASE	9/20/2025
INCIDENT NO.	NAPP2526527439



Pima Environmental Services
 5614 N. Lovington Highway
 Hobbs, NM 88240
 575-964-7740

Requesting a remediation closure approval with this submission?	Yes
Have the lateral and vertical extents of contamination been fully delineated?	Yes
Was this release entirely contained within a lined containment area?	Yes
Restired Areas For Production Use All areas reasonably needed for production or subsequent drilling operations have been stabilized, returned to the sites existing grade, and have a soil cover that prevents ponding of water, minimizing dust and erosion?	Yes
Total Surface Area (sq ft) Remediated What was the total surface area (sq ft) remediated?	1,600
Total Volume (cu yd) Remediated What was the total volume (cubic yards) remediated?	10
Reclaimed to Condition Prior Release All areas not reasonably needed for production or subsequent drilling operations have been reclaimed to contain a minimum of four ft of non-waste contain earthen material with concentrations less than 600 mg/kg chlorides, 100 mg/kg TPH, 50 mg/kg BTEX and 10 mg/kg Benzene?	Yes
Total Surface Area (sq ft) Reclaimed What was the total surface area (in sq ft) reclaimed?	0
Remediation Summary Summarize any additional remedialton activities not included by answers (above).	The impacted gravel was removed using a hand-shoveling crew, after which the lined containment was pressure washed and all standing fluids were recovered using a vacuum truck. Following completion of remediation activities, a liner inspection was conducted, confirming that the containment liner maintained its integrity.



Pima Environmental Services
5614 N. Lovington Highway
Hobbs, NM 88240
575-964-7740

February 2, 2026

NMOCD District 2
811 S. First St
Artesia, NM, 88210

RE: Liner Inspection and Closure Report
Maple State TB
API No. N/A
GPS: Latitude 32.8111 Longitude -104.2202
UL- D, Section 30, Township 17S, Range 28E
NMOCD Reference No. NAPP2526527439

Spur Energy Partners (Spur) has contracted Pima Environmental Services, LLC (Pima) to perform a liner inspection and prepare this closure report for the release of produced water that happened on the Maple State TB (Maple). An initial release was discovered on September 20, 2025. This incident was assigned Incident ID NAPP2526527439, by the New Mexico Oil Conservation Division (NMOCD).

Site Information and Site Characterization

The Maple is located approximately 3.84 miles southeast of Riverside, NM. This spill site is in Unit D, Section 30, Township 17S, Range 28E, Latitude 32.8111 Longitude -104.2202, Eddy County, NM. A Location Map can be found in Figure 1.

Based on the well water data from the New Mexico Office of the State Engineer, the depth to the nearest groundwater in this vicinity measures 92 feet below grade surface (BGS), positioned roughly 0.46 miles away from the Maple, drilled on September 07, 2016. Conversely, as per the United States Geological Survey well water data, the nearest groundwater depth in this region is recorded at 57.30 feet BGS, situated approximately 3.63 miles away from the Maple. For detailed references to water surveys and the precise locations of water wells, please refer to Appendix A, inclusive of the relevant maps. Notably, the Maple is situated within an area with a high potential for karst, as illustrated in Figure 3. Additionally, a comprehensive Topographic Map is available for reference in Figure 2.

Release Information

NAPP2526527439: On September 20, 2025, a failed switch caused a storage tank to overflow, releasing approximately 24 barrels of produced water into the lined containment. The release was immediately controlled, and a vacuum truck was dispatched to recover the fluids. All 24 barrels were successfully recovered, and no impact occurred outside of the lined containment.

A Site Map can be found in Figure 4.

Site Assessment and Liner Inspection

On October 12, 2025, Spur personnel submitted a notification for a liner inspection, adhering to the necessary 48-hour notice period. The details of the 48-hour notification can be referenced in Appendix C.

From October 12 through October 15, Pima Environmental personnel deployed a hand-shoveling crew at the Maple location and removed approximately 10 cubic yards of contaminated gravel from an impacted area measuring approximately 1,600 square feet. All impacted gravel was carefully transported and properly disposed of at Lea Land, LLC, an NMOCD-approved landfill.

On October 16, 2025, Pima Environmental conducted a thorough inspection of the lined containment area. The evaluation process included cleaning the liner with a power washer and using a vacuum truck to ensure the complete removal of any residual fluids. The inspection confirmed that the system remained intact and successfully retained all fluids. As a result, the liner was deemed functional, preventing any further environmental impact. A detailed report, including photographic evidence, is provided in Appendices C and D.

Closure Request

After careful review, Pima requests that this incident nAPP2526527439 be closed. Spur has complied with the applicable closure requirements.

For questions or additional information, please feel free to contact:
Spur Energy – Katherine Purvis at 575-441-8619 or katherine.purvis@spurenergy.com
Pima Environmental Services – Sebastian Orozco at 619-721-4813 or Sebastian@pimaoil.com.

Attachments

Figures:

- 1- Location Map
- 2- Topographic Map
- 3- Karst Map
- 4- Site Map

Appendices:

- Appendix A- Referenced Water Surveys
- Appendix B- Soil Survey, Geological Data, FEMA Flood Map, Wetland Map
- Appendix C-48 Hour Notification and Liner Inspection Form
- Appendix D- Photographic Documentation



Figures:

Figure 1- Location Map

Figure 2- Topographic Map



Figure 3- Karst Map

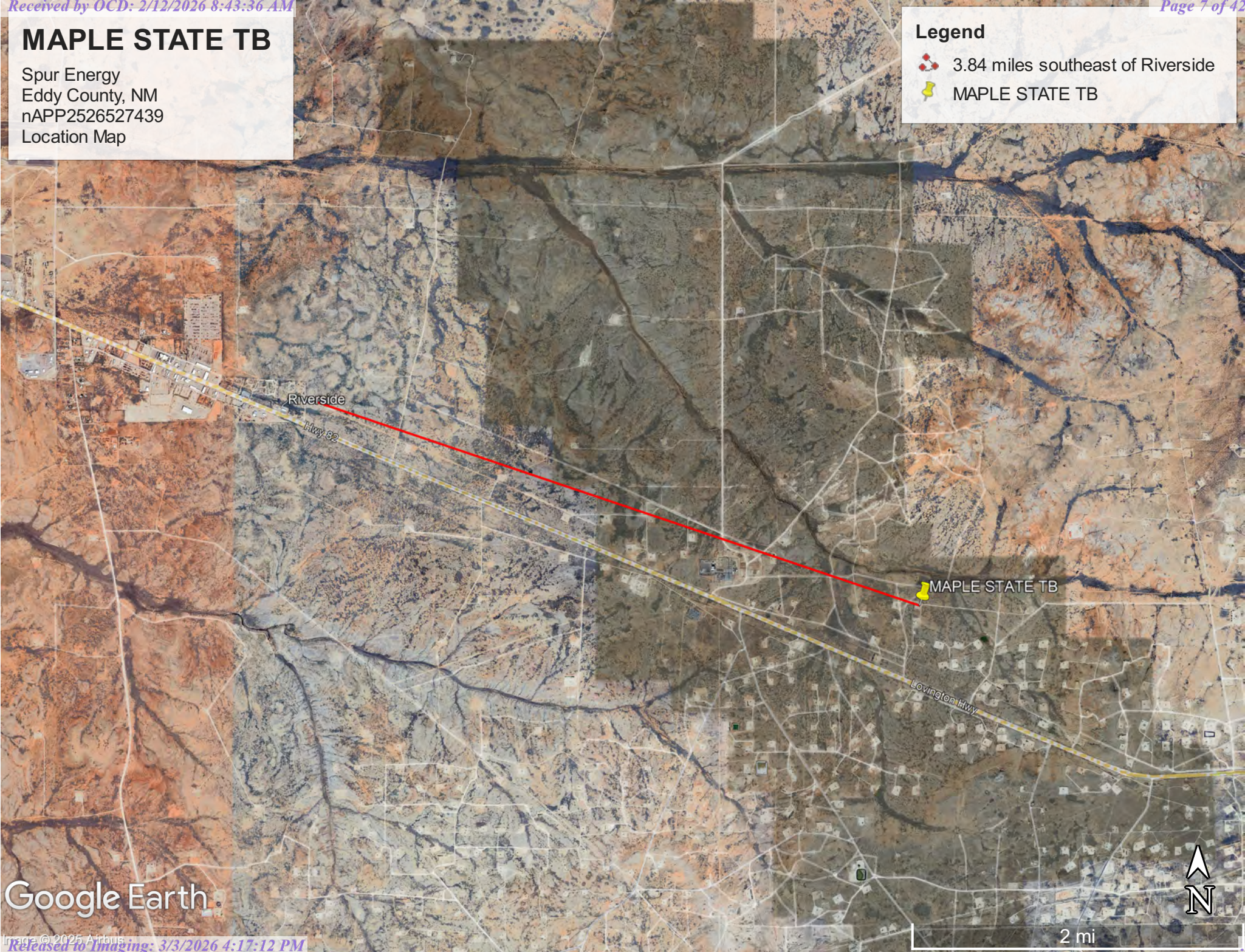
Figure 4- Site Map

MAPLE STATE TB

Spur Energy
Eddy County, NM
nAPP2526527439
Location Map

Legend

-  3.84 miles southeast of Riverside
-  MAPLE STATE TB




Google Earth

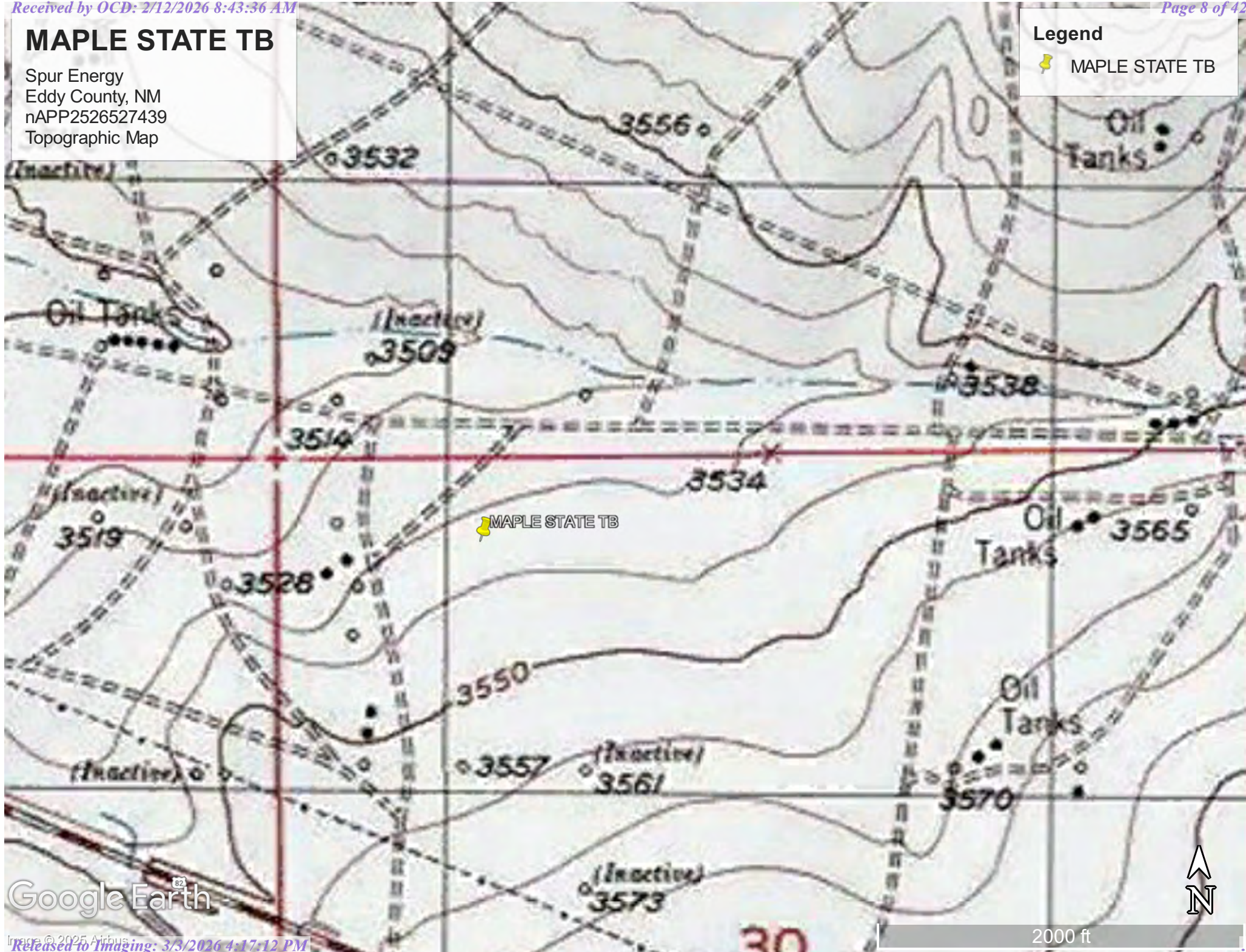
2 mi

MAPLE STATE TB

Spur Energy
Eddy County, NM
nAPP2526527439
Topographic Map

Legend

-  MAPLE STATE TB





Google Earth

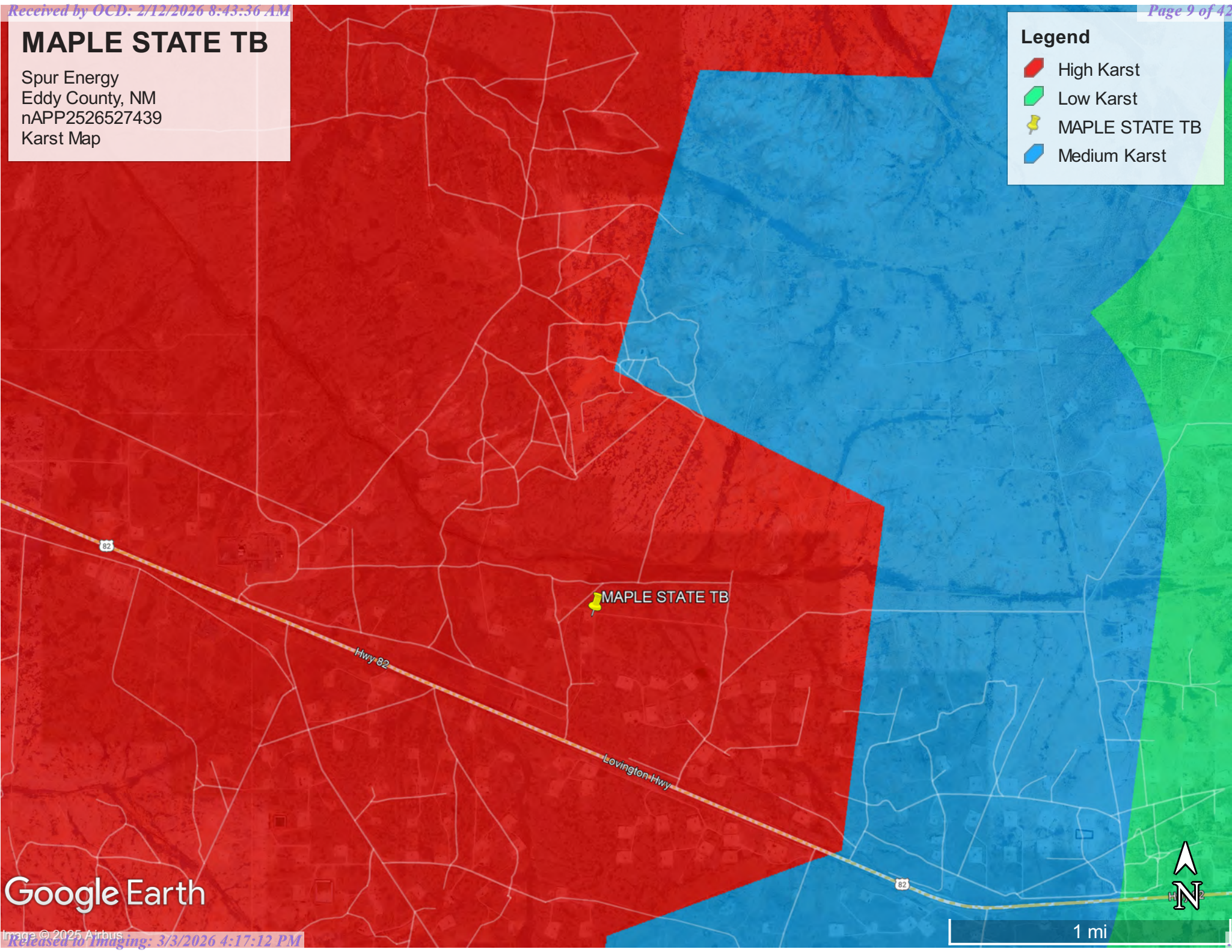
2000 ft

MAPLE STATE TB

Spur Energy
Eddy County, NM
nAPP2526527439
Karst Map

Legend

-  High Karst
-  Low Karst
-  MAPLE STATE TB
-  Medium Karst




Google Earth

MAPLE STATE TB

Spur Energy
Eddy County, NM
nAPP2526527439
Site Map

Legend

-  Excavation and Liner Inspection Area





Appendix A


Water Surveys:

- OSE
- USGS
- Surface Water Map

Point of Diversion Summary

quarters are 1=NW 2=NE 3=SW 4=SE
quarters are smallest to largest

NAD83 UTM in meters

Well Tag	POD Nbr	Q64	Q16	Q4	Sec	Tws	Rng	X	Y	Map
RA 12456	POD1	NW	SE	SE	24	17S	27E	572347.7	3630969.3	

* UTM location was derived from PLSS - see Help

Driller License:	1058	Driller Company:	KEY'S DRILLING & PUMP SERVICE			
Driller Name:	DON KUEHN III					
Drill Start Date:	2016-09-07	Drill Finish Date:	2016-09-09		Plug Date:	
Log File Date:	2016-09-15	PCW Rcv Date:		Source:	Shallow	
Pump Type:		Pipe Discharge Size:		Estimated Yield:	10	
Casing Size:	4.50	Depth Well:	220		Depth Water:	92

Water Bearing Stratifications:

Top	Bottom	Description
90	110	Sandstone/Gravel/Conglomerate
160	180	Shale/Mudstone/Siltstone
180	200	Sandstone/Gravel/Conglomerate
200	210	Sandstone/Gravel/Conglomerate
210	220	Sandstone/Gravel/Conglomerate

Casing Perforations:

Top	Bottom
200	220

The data is furnished by the NMOSE/ISC and is accepted by the recipient with the expressed understanding that the OSE/ISC make no warranties, expressed or implied, concerning the accuracy, completeness, reliability, usability, or suitability for any particular purpose of the data.

9/23/25 10:31 AM MST




Point of Diversion Summary

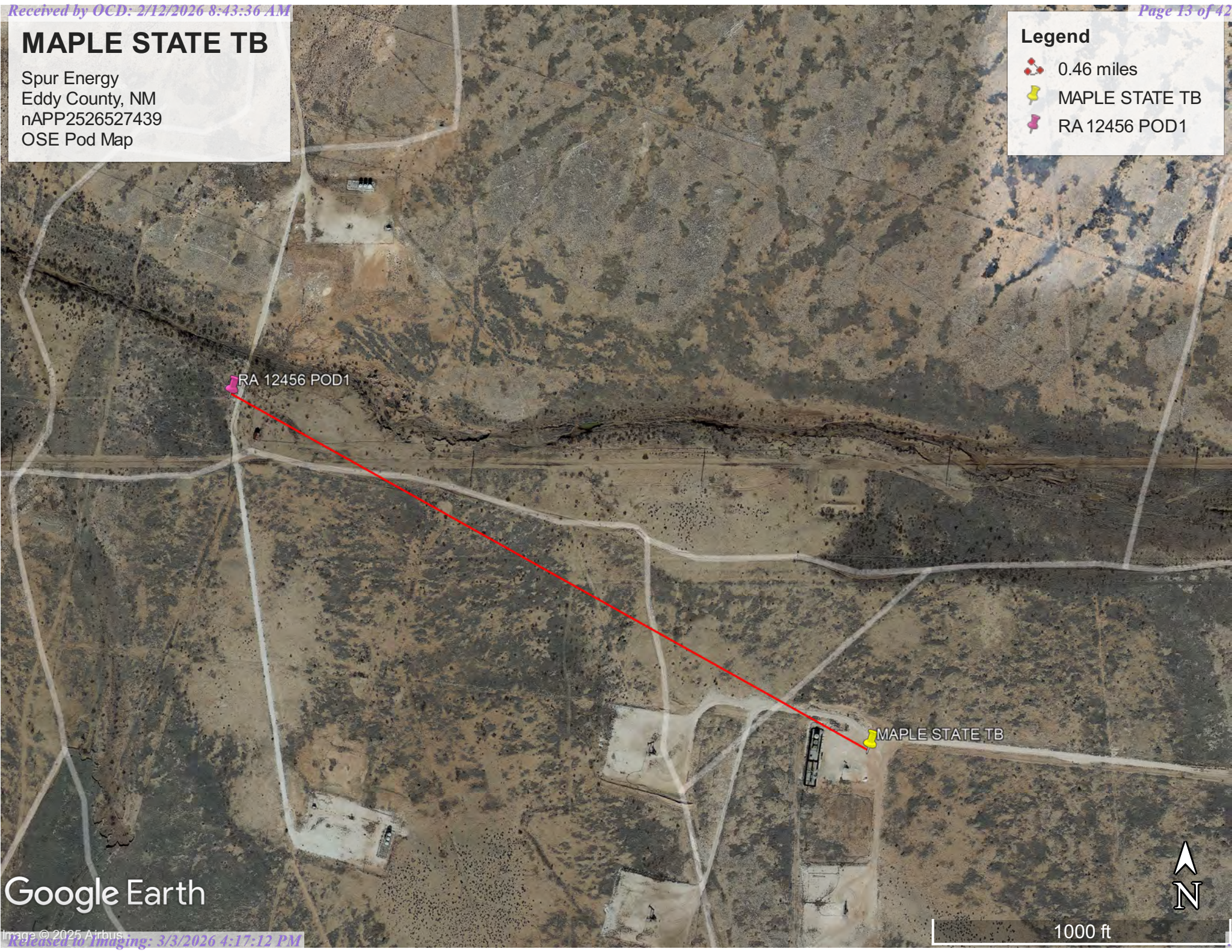
©2024 New Mexico Office of the State Engineer, All Rights Reserved. | [Disclaimer](#) | [Contact Us](#) | [Help](#) | [Home](#) |

MAPLE STATE TB

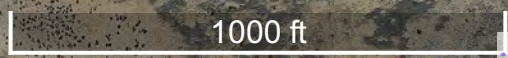
Spur Energy
Eddy County, NM
nAPP2526527439
OSE Pod Map

Legend

-  0.46 miles
-  MAPLE STATE TB
-  RA 12456 POD1



Google Earth





USGS Home
Contact USGS
Search USGS

National Water Information System: Web Interface

USGS Water Resources

Data Category:
 Geographic Area:

Click to hide News Bulletins

- Explore the *NEW* [USGS National Water Dashboard](#) interactive map to access real-time water data from over 13,500 stations nationwide.

Groundwater levels for the Nation

i Important: [Next Generation Monitoring Location Page](#)

Search Results -- 1 sites found

site_no list =

- 325122104151001

Minimum number of levels = 1

[Save file of selected sites](#) to local disk for future upload

USGS 325122104151001 17S.27E.11.12311

Available data for this site

Eddy County, New Mexico

Hydrologic Unit Code 13060011

Latitude 32°51'22", Longitude 104°15'10" NAD27

Land-surface elevation 3,390 feet above NGVD29

The depth of the well is 100.00 feet below land surface.

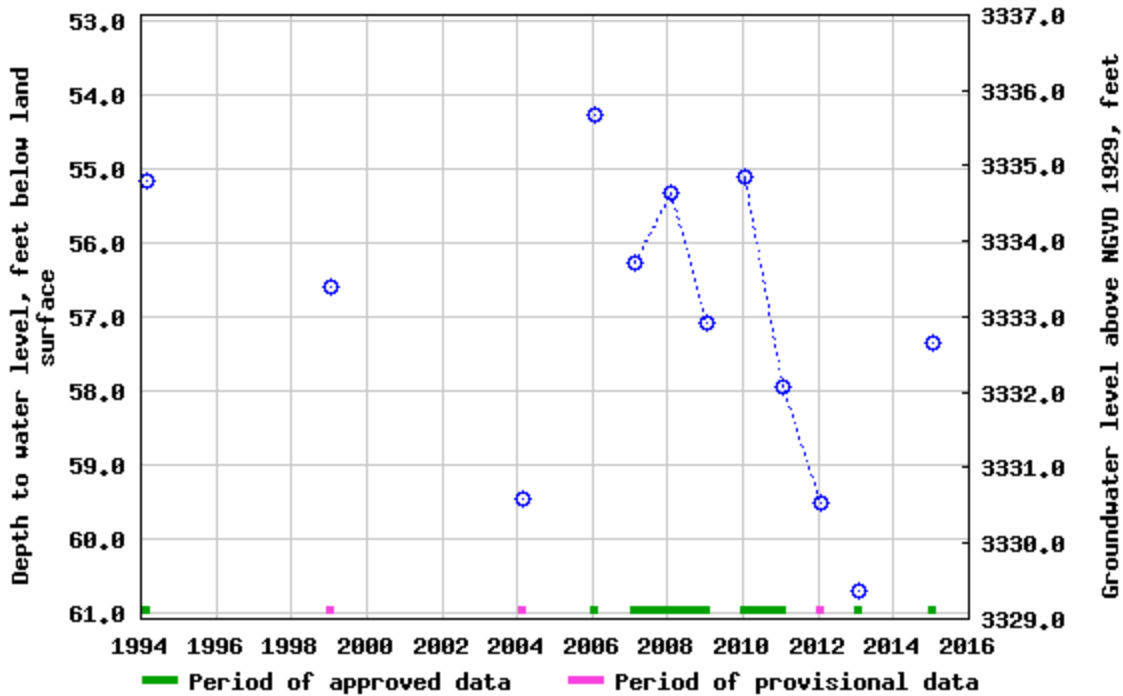
This well is completed in the Other aquifers (N9999OTHER) national aquifer.

This well is completed in the Artesia Group (313ARTS) local aquifer.

Output formats

Table of data
Tab-separated data
Graph of data
Reselect period

USGS 325122104151001 17S,27E,11,12311



Breaks in the plot represent a gap of at least one year between field measurements.

[Download a presentation-quality graph](#)

[Questions or Comments](#)

[Help](#)

[Data Tips](#)

[Explanation of terms](#)

[Subscribe for system changes](#)

[Accessibility](#) [FOIA](#) [Privacy](#) [Policies and Notices](#)

[U.S. Department of the Interior](#) | [U.S. Geological Survey](#)

Title: Groundwater for USA: Water Levels

URL: <https://nwis.waterdata.usgs.gov/nwis/gwlevels?>



Page Contact Information: [USGS Water Data Support Team](#)




Page Last Modified: 2025-09-23 12:33:47 EDT

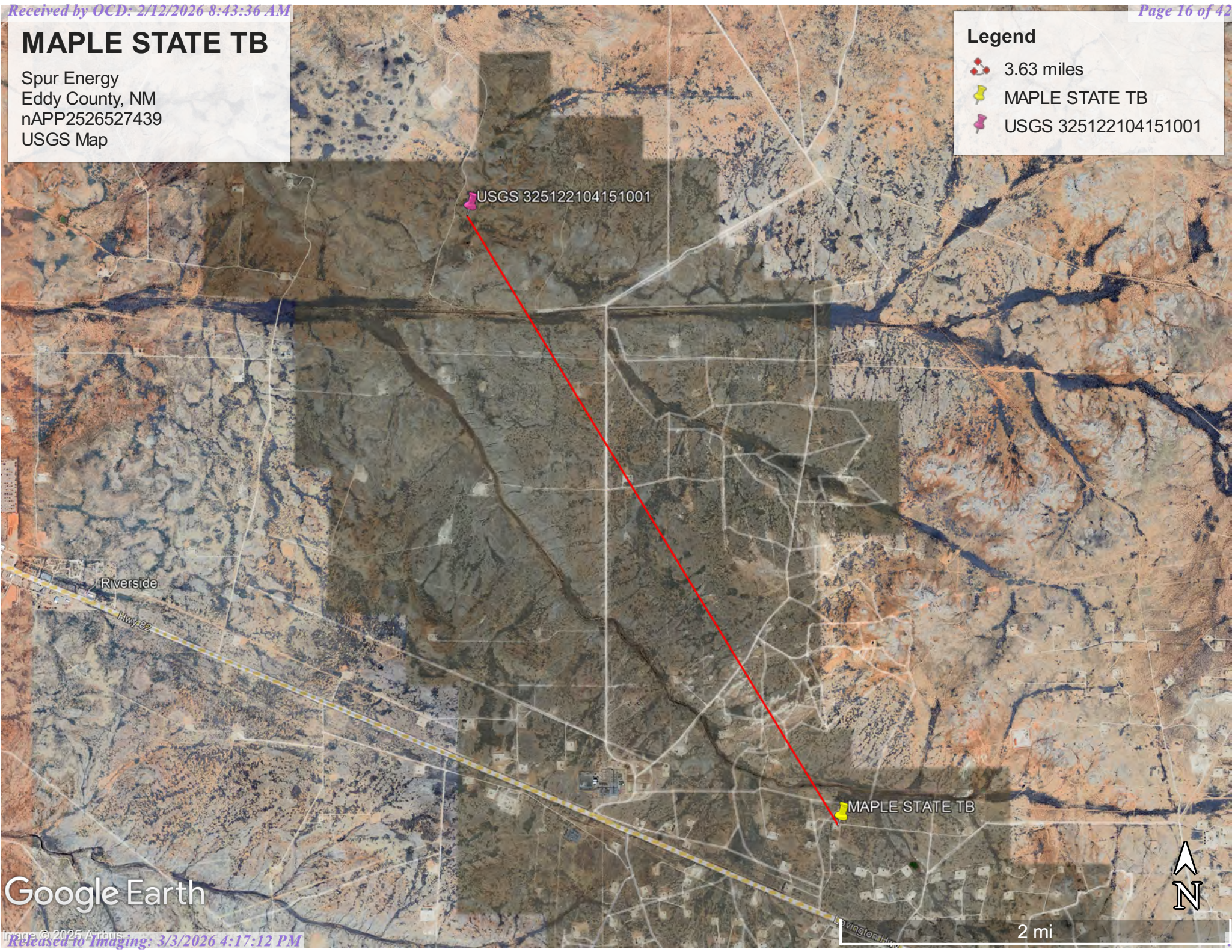
0.78 0.65 nadww02

MAPLE STATE TB

Spur Energy
Eddy County, NM
nAPP2526527439
USGS Map

Legend

-  3.63 miles
-  MAPLE STATE TB
-  USGS 325122104151001



USGS 325122104151001

Riverside

Hwy 62

MAPLE STATE TB

Levington Hwy

2 mi




Google Earth



MAPLE STATE TB

Spur Energy
Eddy County, NM
nAPP2526527439
Surface Water Map

Legend

-  0.20 Miles
-  Maple State TB
-  OSE Stream (38,004)



OSE Stream (38,004)

Maple State TB



1000 ft



Appendix B

- Soil Survey & Soil Maps
- Geological Data
- FEMA Flood Map
- Wetlands Map

Map Unit Description: Reeves-Gypsum land complex, 0 to 3 percent slopes---Eddy Area, New Mexico

Eddy Area, New Mexico

RG—Reeves-Gypsum land complex, 0 to 3 percent slopes

Map Unit Setting

National map unit symbol: 1w5f
Elevation: 1,250 to 5,000 feet
Mean annual precipitation: 10 to 25 inches
Mean annual air temperature: 57 to 70 degrees F
Frost-free period: 190 to 235 days
Farmland classification: Not prime farmland

Map Unit Composition

Reeves and similar soils: 55 percent
Gypsum land: 30 percent
Minor components: 15 percent
Estimates are based on observations, descriptions, and transects of the mapunit.

Description of Reeves

Setting

Landform: Ridges, plains, hills
Landform position (two-dimensional): Shoulder, backslope, footslope, toeslope
Landform position (three-dimensional): Side slope, head slope, nose slope, crest
Down-slope shape: Convex
Across-slope shape: Linear
Parent material: Residuum weathered from gypsum

Typical profile

H1 - 0 to 8 inches: loam
H2 - 8 to 32 inches: clay loam
H3 - 32 to 60 inches: gypsiferous material

Properties and qualities

Slope: 0 to 1 percent
Depth to restrictive feature: More than 80 inches
Drainage class: Well drained
Runoff class: High
Capacity of the most limiting layer to transmit water (Ksat): Very low to moderately low (0.00 to 0.06 in/hr)
Depth to water table: More than 80 inches
Frequency of flooding: None
Frequency of ponding: None
Calcium carbonate, maximum content: 25 percent
Gypsum, maximum content: 80 percent
Maximum salinity: Very slightly saline to moderately saline (2.0 to 8.0 mmhos/cm)
Sodium adsorption ratio, maximum: 4.0
Available water supply, 0 to 60 inches: Low (about 4.3 inches)

Map Unit Description: Reeves-Gypsum land complex, 0 to 3 percent slopes---Eddy Area, New Mexico

Interpretive groups

Land capability classification (irrigated): 3s
Land capability classification (nonirrigated): 7s
Hydrologic Soil Group: B
Ecological site: R070BC007NM - Loamy
Hydric soil rating: No

Description of Gypsum Land

Setting

Landform: Ridges, plains, hills
Landform position (two-dimensional): Shoulder, backslope, footslope, toeslope
Landform position (three-dimensional): Side slope, head slope, nose slope, crest
Down-slope shape: Convex
Across-slope shape: Linear
Parent material: Residuum weathered from gypsum

Interpretive groups

Land capability classification (irrigated): None specified
Land capability classification (nonirrigated): 8s
Hydric soil rating: No

Minor Components

Largo

Percent of map unit: 5 percent
Ecological site: R070BC007NM - Loamy
Hydric soil rating: No

Reagan

Percent of map unit: 5 percent
Ecological site: R070BC007NM - Loamy
Hydric soil rating: No

Cottonwood

Percent of map unit: 5 percent
Ecological site: R070BC033NM - Salty Bottomland
Hydric soil rating: No

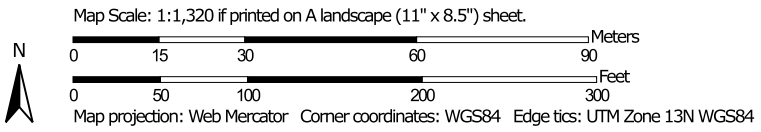
Data Source Information

Soil Survey Area: Eddy Area, New Mexico
Survey Area Data: Version 20, Sep 3, 2024

Soil Map—Eddy Area, New Mexico




Soil Map may not be valid at this scale.




MAP LEGEND

Area of Interest (AOI)

 Area of Interest (AOI)




















Soils







 Soil Map Unit Polygons

 Soil Map Unit Lines

 Soil Map Unit Points

Special Point Features

-  Blowout
-  Borrow Pit
-  Clay Spot
-  Closed Depression
-  Gravel Pit
-  Gravelly Spot
-  Landfill
-  Lava Flow
-  Marsh or swamp
-  Mine or Quarry
-  Miscellaneous Water
-  Perennial Water
-  Rock Outcrop
-  Saline Spot
-  Sandy Spot
-  Severely Eroded Spot
-  Sinkhole
-  Slide or Slip
-  Sodic Spot

-  Spoil Area
-  Stony Spot
-  Very Stony Spot
-  Wet Spot
-  Other
-  Special Line Features


Water Features

 Streams and Canals

Transportation

-  Rails
-  Interstate Highways
-  US Routes
-  Major Roads
-  Local Roads

Background

 Aerial Photography

MAP INFORMATION

The soil surveys that comprise your AOI were mapped at 1:20,000.

Warning: Soil Map may not be valid at this scale.
 Enlargement of maps beyond the scale of mapping can cause misunderstanding of the detail of mapping and accuracy of soil line placement. The maps do not show the small areas of contrasting soils that could have been shown at a more detailed scale.

Please rely on the bar scale on each map sheet for map measurements.

Source of Map: Natural Resources Conservation Service
 Web Soil Survey URL:
 Coordinate System: Web Mercator (EPSG:3857)

Maps from the Web Soil Survey are based on the Web Mercator projection, which preserves direction and shape but distorts distance and area. A projection that preserves area, such as the Albers equal-area conic projection, should be used if more accurate calculations of distance or area are required.

This product is generated from the USDA-NRCS certified data as of the version date(s) listed below.

Soil Survey Area: Eddy Area, New Mexico
 Survey Area Data: Version 20, Sep 3, 2024

Soil map units are labeled (as space allows) for map scales 1:50,000 or larger.

Date(s) aerial images were photographed: Nov 12, 2022—Dec 2, 2022

The orthophoto or other base map on which the soil lines were compiled and digitized probably differs from the background imagery displayed on these maps. As a result, some minor shifting of map unit boundaries may be evident.

Map Unit Legend

Map Unit Symbol	Map Unit Name	Acres in AOI	Percent of AOI
RG	Reeves-Gypsum land complex, 0 to 3 percent slopes	7.2	100.0%
Totals for Area of Interest		7.2	100.0%

(<https://www.usgs.gov/>)

Mineral Resources (<https://www.usgs.gov/energy-and-minerals/mineral-resources-program>)
 / Online Spatial Data (/) / Geology (/geology/) / by state (/geology/state/)
 / New Mexico (/geology/state/state.php?state=NM)

Salado Formation

XML (/geology/state/xml/NMPsl;0)	JSON (/geology/state/json/NMPsl;0)
Shapefile (/geology/state/unit-shape.php?unit=NMPsl;0)	

Evaporite sequence, dominantly halite.

State	New Mexico (/geology/state/state.php?state=NM)
Name	Salado Formation
Geologic age	Upper Permian
Lithologic constituents	<p>Major</p> <p>Sedimentary > Chemical > Evaporite > Salt (Bed) <i>dominantly halite</i></p> <p>Minor</p> <p>Sedimentary > Chemical > Evaporite > Anhydrite (Bed) <i>no lith description on map - description from GEOLEX</i></p> <p>Sedimentary > Clastic > Mixed-clastic (Bed) <i>no lith description on map - description from GEOLEX - redbeds, shaly sandstone</i></p>

References	<p>Green, G.N., Jones, G.E., and Anderson, O.J., 1997, The Digital Geologic Map of New Mexico in ARC/INFO Format: U.S. Geological Survey Open-File Report 97-0052, 9 p., scale 1:500,000.</p> <p>https://pubs.er.usgs.gov/publication/ofr9752 (https://pubs.er.usgs.gov/publication/ofr9752)</p> <p>USGS Geologic Names lexicon found at: http://ngmdb.usgs.gov/Geolex/ https://ngmdb.usgs.gov/Geolex/search (https://ngmdb.usgs.gov/Geolex/search)</p>
-------------------	---

NGMDB product	NGMDB product page for 22974 (https://ngmdb.usgs.gov/Prodesc/proddesc_22974.htm)
----------------------	---

Counties	Chaves (/geology/state/fips-unit.php?code=f35005) - Eddy (/geology/state/fips-unit.php?code=f35015)
-----------------	---




DOI Privacy Policy (<https://www.doi.gov/privacy>) | Legal (https://www.usgs.gov/laws/policies_notices.html) |
Accessibility (<https://www2.usgs.gov/laws/accessibility.html>) | Site Map (<https://www.usgs.gov/sitemap.html>) |
Contact USGS (<https://answers.usgs.gov/>)

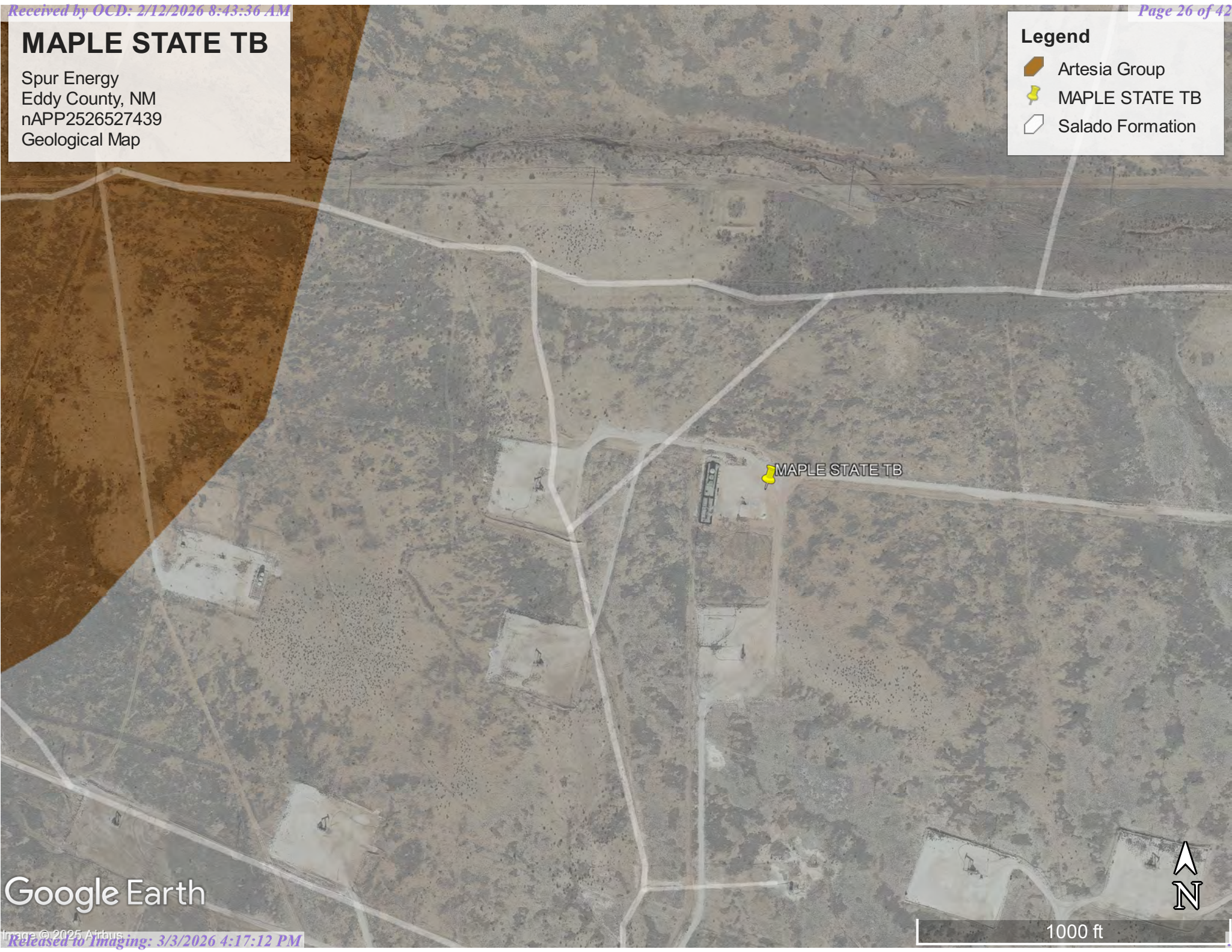
U.S. Department of the Interior (<https://www.doi.gov/>) | DOI Inspector General (<https://www.doiig.gov/>) |
White House (<https://www.whitehouse.gov/>) | E-gov (<https://www.whitehouse.gov/omb/management/egov/>) |
No Fear Act (<https://www.doi.gov/pmb/eo/no-fear-act>) | FOIA (<https://www2.usgs.gov/foia>)

MAPLE STATE TB

Spur Energy
Eddy County, NM
nAPP2526527439
Geological Map

Legend

-  Artesia Group
-  MAPLE STATE TB
-  Salado Formation



MAPLE STATE TB

Google Earth

1000 ft



National Flood Hazard Layer FIRMette



104°13'31"W 32°48'55"N



Legend

SEE FIS REPORT FOR DETAILED LEGEND AND INDEX MAP FOR FIRM PANEL LAYOUT

SPECIAL FLOOD HAZARD AREAS		Without Base Flood Elevation (BFE) <i>Zone A, V, A99</i>
		With BFE or Depth <i>Zone AE, AO, AH, VE, AR</i>
		Regulatory Floodway
OTHER AREAS OF FLOOD HAZARD		0.2% Annual Chance Flood Hazard, Areas of 1% annual chance flood with average depth less than one foot or with drainage areas of less than one square mile <i>Zone Z</i>
		Future Conditions 1% Annual Chance Flood Hazard <i>Zone X</i>
		Area with Reduced Flood Risk due to Levee. See Notes. <i>Zone X</i>
		Area with Flood Risk due to Levee <i>Zone D</i>
OTHER AREAS		NO SCREEN Area of Minimal Flood Hazard <i>Zone X</i>
		Effective LOMRs
GENERAL STRUCTURES		Area of Undetermined Flood Hazard <i>Zone D</i>
		Channel, Culvert, or Storm Sewer
OTHER FEATURES		Levee, Dike, or Floodwall
		Cross Sections with 1% Annual Chance Water Surface Elevation
MAP PANELS		Coastal Transect
		Base Flood Elevation Line (BFE)
		Limit of Study
		Jurisdiction Boundary
		Coastal Transect Baseline
		Profile Baseline
MAP PANELS		Digital Data Available
		No Digital Data Available
		Unmapped

The pin displayed on the map is an approximate point selected by the user and does not represent an authoritative property location.

This map complies with FEMA's standards for the use of digital flood maps if it is not void as described below. The basemap shown complies with FEMA's basemap accuracy standards

The flood hazard information is derived directly from the authoritative NFHL web services provided by FEMA. This map was exported on 9/23/2025 at 4:15 PM and does not reflect changes or amendments subsequent to this date and time. The NFHL and effective information may change or become superseded by new data over time.

This map image is void if the one or more of the following map elements do not appear: basemap imagery, flood zone labels, legend, scale bar, map creation date, community identifiers, FIRM panel number, and FIRM effective date. Map images for unmapped and unmodernized areas cannot be used for regulatory purposes.

Released to Imaging: 3/3/2026 4:17:12 PM

Received by OCD: 2/18/2026 8:43:36 AM









Page 27 of 42



U.S. Fish and Wildlife Service, National Standards and Support Team,
wetlands_team@fws.gov

September 23, 2025

Wetlands

- | | | | | | |
|---|--------------------------------|---|-----------------------------------|---|----------|
|  | Estuarine and Marine Deepwater |  | Freshwater Emergent Wetland |  | Lake |
|  | Estuarine and Marine Wetland |  | Freshwater Forested/Shrub Wetland |  | Other |
| | |  | Freshwater Pond |  | Riverine |

This map is for general reference only. The US Fish and Wildlife Service is not responsible for the accuracy or currentness of the base data shown on this map. All wetlands related data should be used in accordance with the layer metadata found on the Wetlands Mapper web site.



Appendix C

- 48-Hour Notification
- Liner Inspection Form



Pima Environmental Services, LLC

Liner Inspection Form

Company Name: Spur Energy

Site: Maple State TB

Lat/Long: 32.8111,-104.2202

NMOCD Incident ID & Incident Date: NAPP2526527439 09/20/2025

2-Day Notification Sent: via OCD portal 10/12/2025

Inspection Date: 10/16/2025

Liner Type: **Earthen w/liner** Earthen no liner Polystar
 Steel w/poly liner Steel w/spray epoxy No Liner

Other: _____

Visualization	Yes	No	Comments
Is there a tear in the liner?		X	
Are there holes in the liner?		X	
Is the liner retaining any fluids?	X		Standing fluid is visible inside the lined containment due to power washing efforts.
Does the liner have integrity to contain a leak?	X		

Comments: _____

Inspector Name: Andrew Franco Inspector Signature: Andrew Franco

Sebastian@pimaoil.com

From: OCDOnline@state.nm.us
Sent: Sunday, October 12, 2025 6:39 PM
To: sebastian@pimaoil.com
Subject: The Oil Conservation Division (OCD) has accepted the application, Application ID: 514337

To whom it may concern (c/o Sebastian Orozco for Spur Energy Partners LLC),

The OCD has received the submitted *Notification for Liner Inspection for a Release* (C-141L), for incident ID (n#) nAPP2526527439.

The liner inspection is expected to take place:

When: 10/16/2025 @ 08:00

Where: D-30-17S-28E 0 FNL 0 FEL (32.8111,-104.2202)

Additional Information: Pima Environmental Services
619-721-4813

Additional Instructions: 32.8111,-104.2202

An OCD representative may be available onsite at the date and time reported. In the absence or presence of an OCD representative, liner inspection pursuant to 19.15.29.11.A(5)(a) NMAC is required. Should there be a change in the scheduled date and time of the sampling event, then another notification should be resubmitted through OCD permitting as soon as possible.

- **Failure to notify the OCD of liner inspections including any changes in date/time per the requirements of 19.15.29.11.A(5)(a)(ii) NMAC, may result in the inspection not being accepted.**

If you have any questions regarding this application, or don't know why you have received this email, please contact us.

New Mexico Energy, Minerals and Natural Resources Department
1220 South St. Francis Drive
Santa Fe, NM 87505



Appendix D

- Photographic Documentation



PHOTOGRAPHIC DOCUMENTATION

SITE NAME: Maple State TB

Initial Liner Inspection :



Site Information Sign

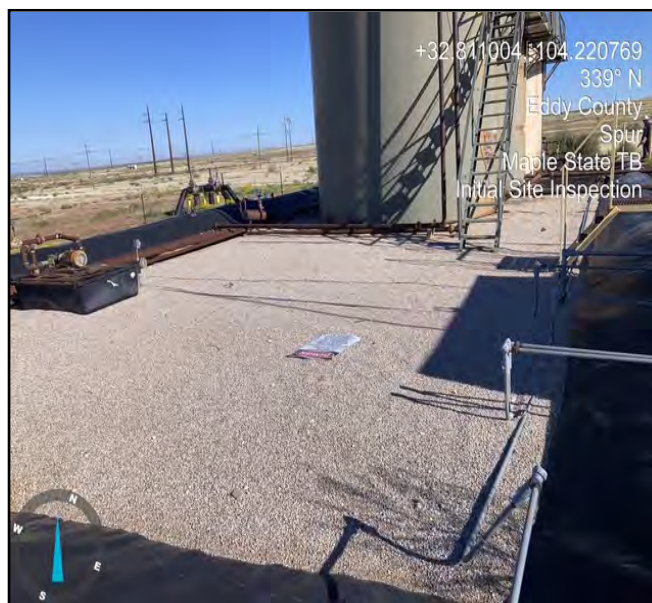


Photo of liner taken during initial liner inspection facing north.



Photo of liner taken during initial liner inspection facing east.



Photo of liner taken during initial liner inspection facing northeast.



Photo of liner taken during initial liner inspection facing southeast.



Photo of liner taken during initial liner inspection facing southwest.



Photo of liner taken during initial liner inspection facing northwest.



Photo of liner taken during initial liner inspection facing west.

PHOTOGRAPHIC DOCUMENTATION

SITE NAME: Maple State TB

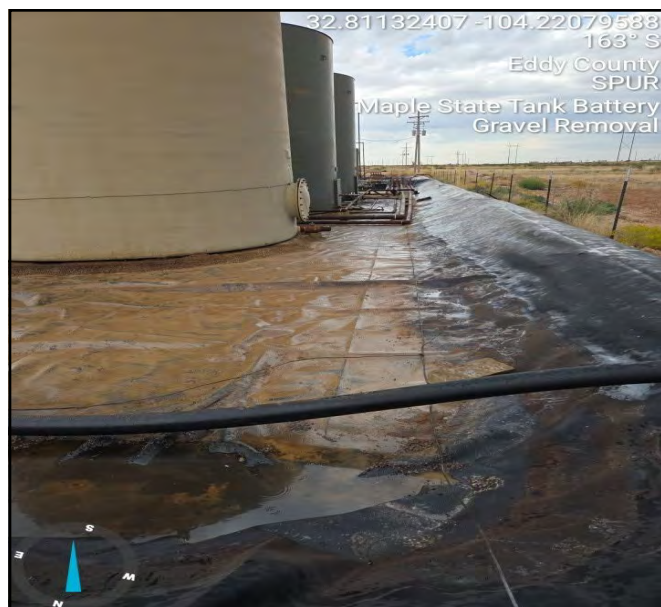
Gravel Removal :



Photograph taken prior to gravel removal, facing west.



Photograph taken prior to gravel removal, facing west.



Photograph taken prior to gravel removal, facing south.



Photograph taken prior to gravel removal, facing southwest.

PHOTOGRAPHIC DOCUMENTATION

SITE NAME: Maple State TB

Liner Inspection :



Photo taken pursuant to power washing. Facing east.

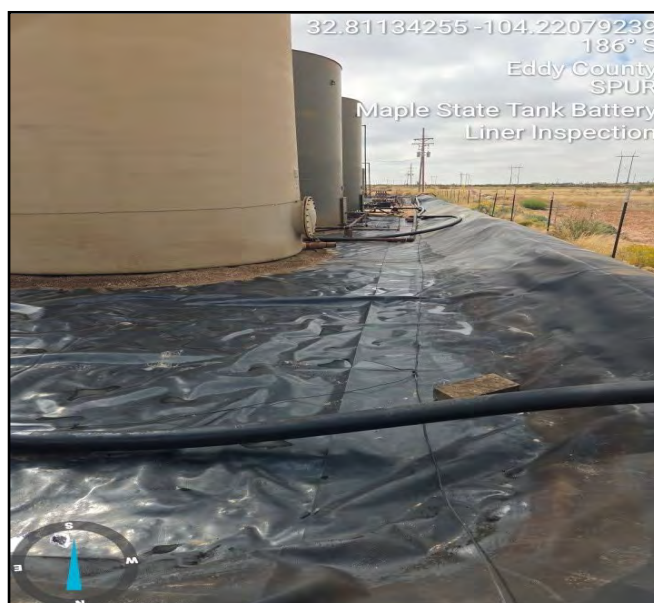


Photo taken pursuant to power washing. Facing south.



Photo taken pursuant to power washing. Facing southwest.



Photo taken pursuant to power washing. Facing north.

Sante Fe Main Office
Phone: (505) 476-3441

General Information
Phone: (505) 629-6116

Online Phone Directory
<https://www.emnrd.nm.gov/ocd/contact-us>

State of New Mexico
Energy, Minerals and Natural Resources
Oil Conservation Division
1220 S. St Francis Dr.
Santa Fe, NM 87505

QUESTIONS

Action 553264

QUESTIONS

Operator: Spur Energy Partners LLC 9655 Katy Freeway Houston, TX 77024	OGRID: 328947
	Action Number: 553264
	Action Type: [C-141] Remediation Closure Request C-141 (C-141-v-Closure)

QUESTIONS

Prerequisites	
Incident ID (n#)	nAPP2526527439
Incident Name	NAPP2526527439 MAPLE STATE TB @ FAPP2203356232
Incident Type	Produced Water Release
Incident Status	Remediation Closure Report Received
Incident Facility	[fAPP2203356232] Maple State Tank Battery

Location of Release Source	
<i>Please answer all the questions in this group.</i>	
Site Name	MAPLE STATE TB
Date Release Discovered	09/20/2025
Surface Owner	State

Incident Details	
<i>Please answer all the questions in this group.</i>	
Incident Type	Produced Water Release
Did this release result in a fire or is the result of a fire	No
Did this release result in any injuries	No
Has this release reached or does it have a reasonable probability of reaching a watercourse	No
Has this release endangered or does it have a reasonable probability of endangering public health	No
Has this release substantially damaged or will it substantially damage property or the environment	No
Is this release of a volume that is or may with reasonable probability be detrimental to fresh water	No

Nature and Volume of Release	
<i>Material(s) released, please answer all that apply below. Any calculations or specific justifications for the volumes provided should be attached to the follow-up C-141 submission.</i>	
Crude Oil Released (bbls) Details	Not answered.
Produced Water Released (bbls) Details	Cause: Equipment Failure Tank (Any) Produced Water Released: 24 BBL Recovered: 24 BBL Lost: 0 BBL.
Is the concentration of chloride in the produced water >10,000 mg/l	Yes
Condensate Released (bbls) Details	Not answered.
Natural Gas Vented (Mcf) Details	Not answered.
Natural Gas Flared (Mcf) Details	Not answered.
Other Released Details	Not answered.
Are there additional details for the questions above (i.e. any answer containing Other, Specify, Unknown, and/or Fire, or any negative lost amounts)	FAILED SWITCH CAUSED TANK TO RUN OVER INTO LINED CONTAINMENT

Sante Fe Main Office
Phone: (505) 476-3441

General Information
Phone: (505) 629-6116

Online Phone Directory
<https://www.emnrd.nm.gov/ocd/contact-us>

State of New Mexico
Energy, Minerals and Natural Resources
Oil Conservation Division
1220 S. St Francis Dr.
Santa Fe, NM 87505

QUESTIONS, Page 2

Action 553264

QUESTIONS (continued)

Operator: Spur Energy Partners LLC 9655 Katy Freeway Houston, TX 77024	OGRID: 328947
	Action Number: 553264
	Action Type: [C-141] Remediation Closure Request C-141 (C-141-v-Closure)

QUESTIONS

Nature and Volume of Release (continued)	
Is this a gas only submission (i.e. only significant Mcf values reported)	No, according to supplied volumes this does not appear to be a "gas only" report.
Was this a major release as defined by Subsection A of 19.15.29.7 NMAC	No
Reasons why this would be considered a submission for a notification of a major release	<i>Unavailable.</i>

With the implementation of the 19.15.27 NMAC (05/25/2021), venting and/or flaring of natural gas (i.e. gas only) are to be submitted on the C-129 form.

Initial Response

The responsible party must undertake the following actions immediately unless they could create a safety hazard that would result in injury.

The source of the release has been stopped	True
The impacted area has been secured to protect human health and the environment	True
Released materials have been contained via the use of berms or dikes, absorbent pads, or other containment devices	True
All free liquids and recoverable materials have been removed and managed appropriately	True
If all the actions described above have not been undertaken, explain why	N/A

Per Paragraph (4) of Subsection B of 19.15.29.8 NMAC the responsible party may commence remediation immediately after discovery of a release. If remediation has begun, please prepare and attach a narrative of actions to date in the follow-up C-141 submission. If remedial efforts have been successfully completed or if the release occurred within a lined containment area (see Subparagraph (a) of Paragraph (5) of Subsection A of 19.15.29.11 NMAC), please prepare and attach all information needed for closure evaluation in the follow-up C-141 submission.

I hereby certify that the information given above is true and complete to the best of my knowledge and understand that pursuant to OCD rules and regulations all operators are required to report and/or file certain release notifications and perform corrective actions for releases which may endanger public health or the environment. The acceptance of a C-141 report by the OCD does not relieve the operator of liability should their operations have failed to adequately investigate and remediate contamination that pose a threat to groundwater, surface water, human health or the environment. In addition, OCD acceptance of a C-141 report does not relieve the operator of responsibility for compliance with any other federal, state, or local laws and/or regulations.

I hereby agree and sign off to the above statement	Name: Katherine Purvis Title: EHS Coordinator Email: katherine.purvis@spurenergy.com Date: 02/12/2026
--	---

Sante Fe Main Office
Phone: (505) 476-3441

General Information
Phone: (505) 629-6116

Online Phone Directory
<https://www.emnrd.nm.gov/ocd/contact-us>

State of New Mexico
Energy, Minerals and Natural Resources
Oil Conservation Division
1220 S. St Francis Dr.
Santa Fe, NM 87505

QUESTIONS, Page 3

Action 553264

QUESTIONS (continued)

Operator: Spur Energy Partners LLC 9655 Katy Freeway Houston, TX 77024	OGRID: 328947
	Action Number: 553264
	Action Type: [C-141] Remediation Closure Request C-141 (C-141-v-Closure)

QUESTIONS

Site Characterization

Please answer all the questions in this group (only required when seeking remediation plan approval and beyond). This information must be provided to the appropriate district office no later than 90 days after the release discovery date.

What is the shallowest depth to groundwater beneath the area affected by the release in feet below ground surface (ft bgs)	Between 75 and 100 (ft.)
What method was used to determine the depth to ground water	NM OSE iWaters Database Search
Did this release impact groundwater or surface water	No
What is the minimum distance, between the closest lateral extents of the release and the following surface areas:	
A continuously flowing watercourse or any other significant watercourse	Between 500 and 1000 (ft.)
Any lakebed, sinkhole, or playa lake (measured from the ordinary high-water mark)	Between 500 and 1000 (ft.)
An occupied permanent residence, school, hospital, institution, or church	Between 1 and 5 (mi.)
A spring or a private domestic fresh water well used by less than five households for domestic or stock watering purposes	Between ½ and 1 (mi.)
Any other fresh water well or spring	Between 1 and 5 (mi.)
Incorporated municipal boundaries or a defined municipal fresh water well field	Between 1 and 5 (mi.)
A wetland	Between 500 and 1000 (ft.)
A subsurface mine	Greater than 5 (mi.)
An (non-karst) unstable area	Greater than 5 (mi.)
Categorize the risk of this well / site being in a karst geology	High
A 100-year floodplain	Between 500 and 1000 (ft.)
Did the release impact areas not on an exploration, development, production, or storage site	No

Remediation Plan

Please answer all the questions that apply or are indicated. This information must be provided to the appropriate district office no later than 90 days after the release discovery date.

Requesting a remediation plan approval with this submission	Yes
<i>Attach a comprehensive report demonstrating the lateral and vertical extents of soil contamination associated with the release have been determined, pursuant to 19.15.29.11 NMAC and 19.15.29.13 NMAC.</i>	
Have the lateral and vertical extents of contamination been fully delineated	Yes
Was this release entirely contained within a lined containment area	Yes
<i>Per Subsection B of 19.15.29.11 NMAC unless the site characterization report includes completed efforts at remediation, the report must include a proposed remediation plan in accordance with 19.15.29.12 NMAC, which includes the anticipated timelines for beginning and completing the remediation.</i>	
On what estimated date will the remediation commence	10/12/2025
On what date will (or did) the final sampling or liner inspection occur	10/16/2025
On what date will (or was) the remediation complete(d)	10/16/2025
What is the estimated surface area (in square feet) that will be remediated	1600
What is the estimated volume (in cubic yards) that will be remediated	10

These estimated dates and measurements are recognized to be the best guess or calculation at the time of submission and may (be) change(d) over time as more remediation efforts are completed.

The OCD recognizes that proposed remediation measures may have to be minimally adjusted in accordance with the physical realities encountered during remediation. If the responsible party has any need to significantly deviate from the remediation plan proposed, then it should consult with the division to determine if another remediation plan submission is required.

Sante Fe Main Office
Phone: (505) 476-3441

General Information
Phone: (505) 629-6116

Online Phone Directory
<https://www.emnrd.nm.gov/ocd/contact-us>

State of New Mexico
Energy, Minerals and Natural Resources
Oil Conservation Division
1220 S. St Francis Dr.
Santa Fe, NM 87505

QUESTIONS, Page 4

Action 553264

QUESTIONS (continued)

Operator: Spur Energy Partners LLC 9655 Katy Freeway Houston, TX 77024	OGRID: 328947
	Action Number: 553264
	Action Type: [C-141] Remediation Closure Request C-141 (C-141-v-Closure)

QUESTIONS

Remediation Plan (continued)	
<i>Please answer all the questions that apply or are indicated. This information must be provided to the appropriate district office no later than 90 days after the release discovery date.</i>	
This remediation will (or is expected to) utilize the following processes to remediate / reduce contaminants:	
<i>(Select all answers below that apply.)</i>	
Is (or was) there affected material present needing to be removed	Yes
Is (or was) there a power wash of the lined containment area (to be) performed	Yes
OTHER (Non-listed remedial process)	Not answered.
<i>Per Subsection B of 19.15.29.11 NMAC unless the site characterization report includes completed efforts at remediation, the report must include a proposed remediation plan in accordance with 19.15.29.12 NMAC, which includes the anticipated timelines for beginning and completing the remediation.</i>	
I hereby certify that the information given above is true and complete to the best of my knowledge and understand that pursuant to OCD rules and regulations all operators are required to report and/or file certain release notifications and perform corrective actions for releases which may endanger public health or the environment. The acceptance of a C-141 report by the OCD does not relieve the operator of liability should their operations have failed to adequately investigate and remediate contamination that pose a threat to groundwater, surface water, human health or the environment. In addition, OCD acceptance of a C-141 report does not relieve the operator of responsibility for compliance with any other federal, state, or local laws and/or regulations.	
I hereby agree and sign off to the above statement	Name: Katherine Purvis Title: EHS Coordinator Email: katherine.purvis@spurenergy.com Date: 02/12/2026
<i>The OCD recognizes that proposed remediation measures may have to be minimally adjusted in accordance with the physical realities encountered during remediation. If the responsible party has any need to significantly deviate from the remediation plan proposed, then it should consult with the division to determine if another remediation plan submission is required.</i>	

Sante Fe Main Office
Phone: (505) 476-3441

General Information
Phone: (505) 629-6116

Online Phone Directory
<https://www.emnrd.nm.gov/ocd/contact-us>

State of New Mexico
Energy, Minerals and Natural Resources
Oil Conservation Division
1220 S. St Francis Dr.
Santa Fe, NM 87505

QUESTIONS, Page 6

Action 553264

QUESTIONS (continued)

Operator: Spur Energy Partners LLC 9655 Katy Freeway Houston, TX 77024	OGRID: 328947
	Action Number: 553264
	Action Type: [C-141] Remediation Closure Request C-141 (C-141-v-Closure)

QUESTIONS

Liner Inspection Information	
Last liner inspection notification (C-141L) recorded	514337
Liner inspection date pursuant to Subparagraph (a) of Paragraph (5) of Subsection A of 19.15.29.11 NMAC	10/16/2025
Was all the impacted materials removed from the liner	Yes
What was the liner inspection surface area in square feet	1800

Remediation Closure Request	
<i>Only answer the questions in this group if seeking remediation closure for this release because all remediation steps have been completed.</i>	
Requesting a remediation closure approval with this submission	Yes
Have the lateral and vertical extents of contamination been fully delineated	Yes
Was this release entirely contained within a lined containment area	Yes
What was the total surface area (in square feet) remediated	1600
What was the total volume (cubic yards) remediated	10
Summarize any additional remediation activities not included by answers (above)	The impacted gravel was removed using a hand-shoveling crew, after which the lined containment was pressure washed and all standing fluids were recovered using a vacuum truck. Following completion of remediation activities, a liner inspection was conducted, confirming that the containment liner maintained its integrity.

The responsible party must attach information demonstrating they have complied with all applicable closure requirements and any conditions or directives of the OCD. This demonstration should be in the form of a comprehensive report (in .pdf format) including a scaled site map, sampling diagrams, relevant field notes, photographs of any excavation prior to backfilling, laboratory data including chain of custody documents of final sampling, and a narrative of the remedial activities. Refer to 19.15.29.12 NMAC.

I hereby certify that the information given above is true and complete to the best of my knowledge and understand that pursuant to OCD rules and regulations all operators are required to report and/or file certain release notifications and perform corrective actions for releases which may endanger public health or the environment. The acceptance of a C-141 report by the OCD does not relieve the operator of liability should their operations have failed to adequately investigate and remediate contamination that pose a threat to groundwater, surface water, human health or the environment. In addition, OCD acceptance of a C-141 report does not relieve the operator of responsibility for compliance with any other federal, state, or local laws and/or regulations. The responsible party acknowledges they must substantially restore, reclaim, and re-vegetate the impacted surface area to the conditions that existed prior to the release or their final land use in accordance with 19.15.29.13 NMAC including notification to the OCD when reclamation and re-vegetation are complete.

I hereby agree and sign off to the above statement	Name: Katherine Purvis Title: EHS Coordinator Email: katherine.purvis@spurenergy.com Date: 02/12/2026
--	---

Sante Fe Main Office
Phone: (505) 476-3441

General Information
Phone: (505) 629-6116

Online Phone Directory
<https://www.emnrd.nm.gov/ocd/contact-us>

State of New Mexico
Energy, Minerals and Natural Resources
Oil Conservation Division
1220 S. St Francis Dr.
Santa Fe, NM 87505

CONDITIONS

Action 553264

CONDITIONS

Operator: Spur Energy Partners LLC 9655 Katy Freeway Houston, TX 77024	OGRID: 328947
	Action Number: 553264
	Action Type: [C-141] Remediation Closure Request C-141 (C-141-v-Closure)

CONDITIONS

Created By	Condition	Condition Date
scwells	None	3/3/2026