

2135 S. Loop 250 W.  
Midland, Texas 79703  
United States  
ghd.com

Our ref.: 12685230-NMOCD-1

February 23, 2026

New Mexico Oil Conservation Division  
506 W. Texas Avenue  
Artesia, New Mexico 88210

Closure Report  
Marathon Oil Permian LLC  
El Presidente State 003H  
Unit Letter P, Section 02, T24S, R27E  
GPS: 32.24062, -104.15387  
Eddy County, New Mexico

## 1. Introduction

GHD Services Inc. (GHD), on behalf of Marathon Oil Permian LLC (MRO), has prepared this *Closure Report* to document Site assessment activities at El Presidente State 003H (Site). The purpose of the assessment was to determine the presence or absence of impacts to soil following a release of produced water within a lined containment at the Site. Based on field observations, MRO is submitting this *Closure Report*, describing Site assessment activities that have occurred and requesting closure for Incident Number nAPP2531043877.

## 2. Site Description and Release Summary

The Site is in Unit P, Section 02, Township 24 South, Range 27 East, in Eddy County, New Mexico (32.24062° N, -104.15387° W) and is associated with oil and gas exploration and production operations on state land. On October 31, 2025, approximately 6 barrels (bbls) of produced water were released into the lined secondary containment due to the corrosion of a dump line. A vacuum truck was dispatched to the Site to recover free-standing fluids; 6 bbls of released produced water were recovered from within the lined containment. The release was reported to the New Mexico Oil Conservation Division (NMOCD) on November 6, 2025, and was subsequently assigned Incident Number nAPP2531043877.

## 3. Site Characterization and Closure Criteria

The Site was characterized to assess applicability of Table I, Closure Criteria for Soils Impacted by a Release, of Title 19, Chapter 15, Part 29 (NMAC 19.15.29) of the New Mexico Administrative Code (NMAC). Results from the characterization desktop review are summarized below and a Site Map is presented on **Figure 1**.

According to the soil survey provided by the United States Department of Agriculture National Resources Conservation Services, the soils located within the Site consists of Reagan-Upton association and Upton gravelly loam. The Site is within a high potential karst area.

Depth to groundwater at the Site is less than 50 feet below ground surface (ft bgs) based on the nearest groundwater well data. Groundwater was determined utilizing the New Mexico Office of the State Engineers (NMOSE) database for registered water wells. The nearest permitted groundwater well with depth to groundwater data is NMOSE POD1 C-02976 located approximately 0.89 miles southeast of the Site. The well was completed to a depth of 57 ft bgs on September 27, 2003, and had a static water level of 27 ft bgs after completion. A copy of the referenced well record is included in **Attachment A**.

The Site is not within 300 feet of a significant watercourse, the nearest is a river that is 0.7 miles south. The Site is greater than 200 feet from a lakebed, sinkhole, or playa lake, with the nearest being 0.79 miles south. The Site is greater than 300 feet from an occupied residence, school, hospital, institution, or church; with the nearest being 2.05 miles west of the Site. The nearest fresh water well for livestock watering purposes is located approximately 0.9 miles southeast of the Site. The Site is 3.43 miles away from a defined municipal freshwater field. There are no wetlands within 300 feet of the Site, the nearest is 0.7 miles southwest. The Site is not within a 100-year floodplain or overlying a subsurface mine, the nearest floodplain is 0.6 miles south and the nearest subsurface mine is 7.94 miles northeast. The location of the Site is depicted on **Figure 1**. A detailed map of the Site is provided on **Figure 2**. The Site Characterization Documentation is included in **Attachment B**.

Based on the results of the Site Characterization desktop review and having the Site within a high karst area, the following NMOCD Table I Closure Criteria (Closure Criteria) apply.

Table 3.1 Closure Criteria for Soils Impacted by a Release (NMAC 19.15.29.12)

Regulatory Standard	Benzene (mg/kg)	BTEX (mg/kg)	TPH (GRO+DRO) (mg/kg)	TPH (GRO+DRO+MRO) (mg/kg)	Chloride (mg/kg)
19.15.29.12 NMAC Table I Closure Criteria for Soils Impacted by a Release.	10	50	---	100	600
Notes: --- = not defined. mg/kg = milligrams per kilogram. TPH = total petroleum hydrocarbons. GRO+DRO+MRO = Gasoline Range Organics + Diesel Range Organics + Motor Oil/Lube Range Organics. BTEX = benzene, toluene, ethylbenzene, and xylene.					

## 4. Site Assessment Activities

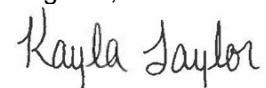
The liner inspection notice was provided on January 15, 2026. A liner integrity inspection was scheduled for January 19, 2026. The liner was visually inspected and no rips, tears, holes, or damage in the liner was observed. The liner was determined to be intact with no integrity issues. Photographic documentation of the liner inspection completed on January 19 is presented in Attachment C.

## 5. Closure Request

Based on the liner inspection and assessment activities at the Site, MRO respectfully requests that no further actions be required, and requests closure of Incident Number nAPP2531043877 be granted.

Should you have any questions or require further information regarding this report, please do not hesitate to contact the undersigned.

Regards,



**Kayla Taylor**  
Senior Project Manager

+1 432 210-5443  
kayla.taylor@ghd.com



**Scott Foord**  
Project Director

+1 281 725-7477  
scott.foord@ghd.com

JT/jlf/1/S4

Encl.:      Figure 1 - Site Location Map  
              Figure 2 - Site Details Map  
              Attachment A - Referenced Well Records  
              Attachment B - Site Characterization Documentation  
              Attachment C - Photographic Documentation


# Attachment A

## Referenced Well Records

# Point of Diversion Summary

quarters are 1=NW 2=NE 3=SW 4=SE  
quarters are smallest to largest

NAD83 UTM in meters

Well Tag	POD Nbr	Q64	Q16	Q4	Sec	Tws	Rng	X	Y	Map
	C 02976	SE	NE	SW	12	24S	27E	580519.0	3566195.0 *	

\* UTM location was derived from PLSS - see Help

<b>Driller License:</b>	1348	<b>Driller Company:</b>	TAYLOR WATER WELL SERVICE		
<b>Driller Name:</b>	EXISTING WELL				
<b>Drill Start Date:</b>	2003-09-26	<b>Drill Finish Date:</b>	2003-09-27	<b>Plug Date:</b>	
<b>Log File Date:</b>	2003-09-29	<b>PCW Rcv Date:</b>		<b>Source:</b>	Shallow
<b>Pump Type:</b>	SUBMER	<b>Pipe Discharge Size:</b>	1.25	<b>Estimated Yield:</b>	60
<b>Casing Size:</b>	6.65	<b>Depth Well:</b>	57	<b>Depth Water:</b>	27

## Water Bearing Stratifications:

Top	Bottom	Description
0	6	Other/Unknown
6	22	Other/Unknown
22	28	Other/Unknown
28	37	Other/Unknown
37	42	Sandstone/Gravel/Conglomerate
42	57	Other/Unknown

## Casing Perforations:

Top	Bottom
37	57

## Meter Information

<b>Meter Number:</b>	7472	<b>Meter Make:</b>	MASTE
<b>Meter Serial Number:</b>	2144882	<b>Meter Multiplier:</b>	100.0000
<b>Number of Dials:</b>	5	<b>Meter Type:</b>	Diversion

**Unit of Measure:** Gallons    **Reading Frequency:** Monthly (No Reading Expected)

**Meter Readings (in Acre-Feet)**

Read Date	Year	Mtr Reading	Flag	Rdr	Comment	Mtr Amount	Online
2003-12-04	2003	53319.000	A	RPT		0.000	
2004-01-20	2003	58180.000	A	RPT	JOB COMPLETE	1.492	

**YTD Meter Amounts:**

Year	Amount
2003	1.492

The data is furnished by the NMOSE/ISC and is accepted by the recipient with the expressed understanding that the OSE/ISC make no warranties, expressed or implied, concerning the accuracy, completeness, reliability, usability, or suitability for any particular purpose of the data.

2/6/26 10:16 AM MST

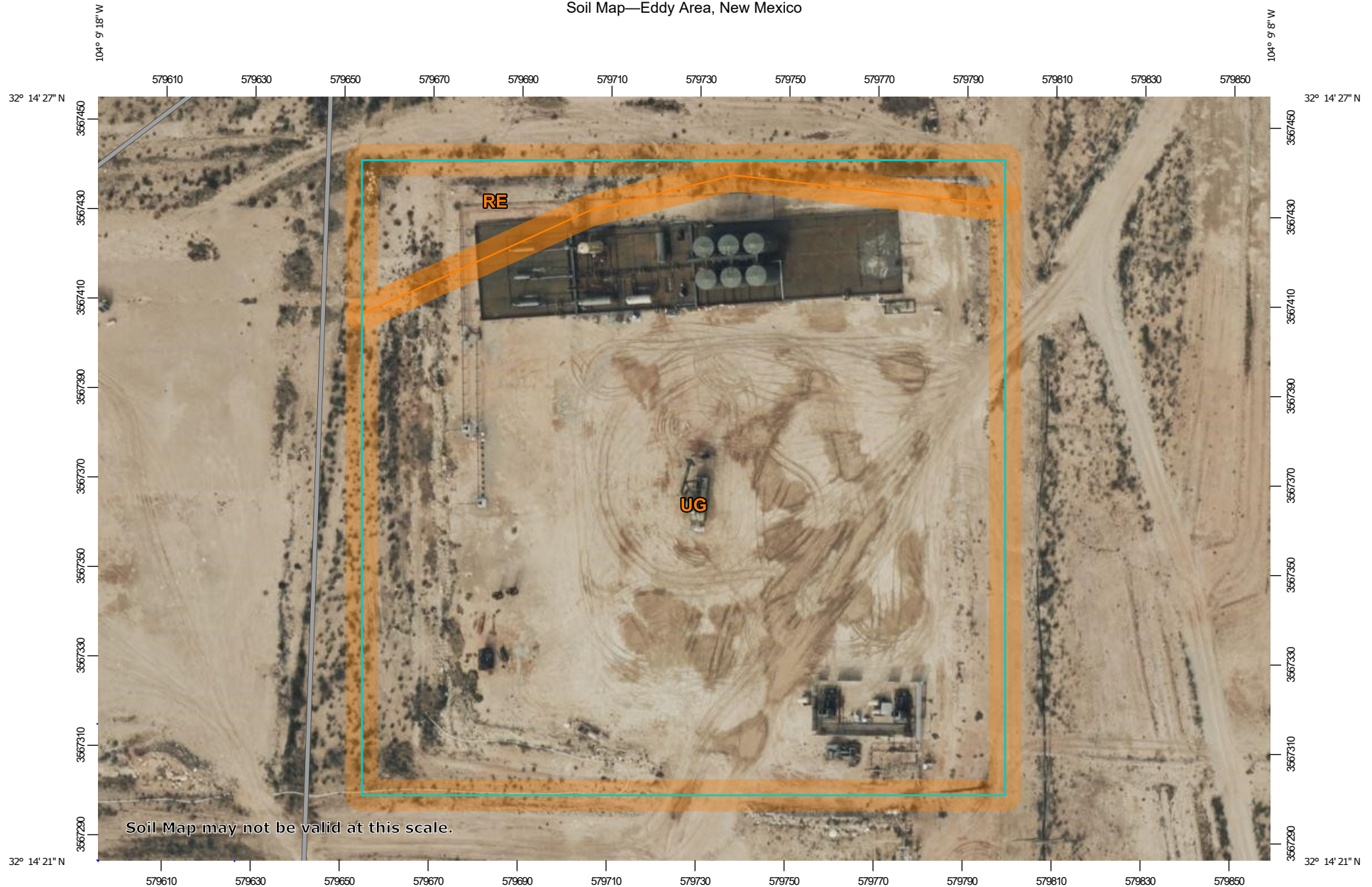
Point of Diversion Summary

©2024 New Mexico Office of the State Engineer, All Rights Reserved. | [Disclaimer](#) | [Contact Us](#) | [Help](#) | [Home](#) |

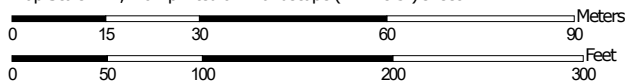
# Attachment B

## Site Characterization Documentation

Soil Map—Eddy Area, New Mexico



Map Scale: 1:1,210 if printed on A landscape (11" x 8.5") sheet.




Map projection: Web Mercator Corner coordinates: WGS84 Edge ticks: UTM Zone 13N WGS84



Soil Map—Eddy Area, New Mexico


**MAP LEGEND**

**Area of Interest (AOI)**

 Area of Interest (AOI)

**Soils**

 Soil Map Unit Polygons

 Soil Map Unit Lines

 Soil Map Unit Points

**Special Point Features**



Blowout



Borrow Pit



Clay Spot



Closed Depression



Gravel Pit



Gravelly Spot



Landfill



Lava Flow



Marsh or swamp



Mine or Quarry



Miscellaneous Water



Perennial Water



Rock Outcrop



Saline Spot



Sandy Spot



Severely Eroded Spot



Sinkhole



Slide or Slip



Sodic Spot



Spoil Area



Stony Spot



Very Stony Spot



Wet Spot



Other



Special Line Features

**Water Features**



Streams and Canals

**Transportation**



Rails



Interstate Highways



US Routes



Major Roads



Local Roads

**Background**



Aerial Photography

**MAP INFORMATION**

The soil surveys that comprise your AOI were mapped at 1:20,000.

**Warning:** Soil Map may not be valid at this scale.

Enlargement of maps beyond the scale of mapping can cause misunderstanding of the detail of mapping and accuracy of soil line placement. The maps do not show the small areas of contrasting soils that could have been shown at a more detailed scale.

Please rely on the bar scale on each map sheet for map measurements.

Source of Map: Natural Resources Conservation Service

Web Soil Survey URL:

Coordinate System: Web Mercator (EPSG:3857)

Maps from the Web Soil Survey are based on the Web Mercator projection, which preserves direction and shape but distorts distance and area. A projection that preserves area, such as the Albers equal-area conic projection, should be used if more accurate calculations of distance or area are required.

This product is generated from the USDA-NRCS certified data as of the version date(s) listed below.

Soil Survey Area: Eddy Area, New Mexico

Survey Area Data: Version 21, Sep 9, 2025

Soil map units are labeled (as space allows) for map scales 1:50,000 or larger.

Date(s) aerial images were photographed: Nov 12, 2022—Dec 2, 2022

The orthophoto or other base map on which the soil lines were compiled and digitized probably differs from the background imagery displayed on these maps. As a result, some minor shifting of map unit boundaries may be evident.

Soil Map—Eddy Area, New Mexico

---

## Map Unit Legend

Map Unit Symbol	Map Unit Name	Acres in AOI	Percent of AOI
RE	Reagan-Upton association, 0 to 9 percent slopes	0.5	8.8%
UG	Upton gravelly loam, 0 to 9 percent slopes	4.6	91.2%
<b>Totals for Area of Interest</b>		<b>5.1</b>	<b>100.0%</b>

Map Unit Description: Reagan-Upton association, 0 to 9 percent slopes---Eddy Area, New Mexico

## Eddy Area, New Mexico

### RE—Reagan-Upton association, 0 to 9 percent slopes

#### Map Unit Setting

*National map unit symbol:* 1w5d

*Landscape:* Uplands

*Elevation:* 1,100 to 5,400 feet

*Mean annual precipitation:* 6 to 14 inches

*Mean annual air temperature:* 60 to 64 degrees F

*Frost-free period:* 180 to 240 days

*Farmland classification:* Farmland of statewide importance

#### Map Unit Composition

*Reagan and similar soils:* 70 percent

*Upton and similar soils:* 25 percent

*Minor components:* 5 percent

*Estimates are based on observations, descriptions, and transects of the mapunit.*

#### Description of Reagan

##### Setting

*Landscape:* Uplands

*Landform:* Alluvial fans, Fan remnants

*Landform position (three-dimensional):* Rise

*Down-slope shape:* Linear, convex

*Across-slope shape:* Linear

*Parent material:* Alluvium and/or eolian deposits

##### Typical profile

*H1 - 0 to 8 inches:* loam

*H2 - 8 to 60 inches:* loam

##### Properties and qualities

*Slope:* 0 to 3 percent

*Depth to restrictive feature:* More than 80 inches

*Drainage class:* Well drained

*Runoff class:* Low

*Capacity of the most limiting layer to transmit water (Ksat):*

Moderately high to high (0.60 to 2.00 in/hr)

*Depth to water table:* More than 80 inches

*Frequency of flooding:* None

*Frequency of ponding:* None

*Calcium carbonate, maximum content:* 40 percent

*Maximum salinity:* Very slightly saline to moderately saline (2.0 to 8.0 mmhos/cm)

*Sodium adsorption ratio, maximum:* 1.0

*Available water supply, 0 to 60 inches:* Moderate (about 8.2 inches)

Map Unit Description: Reagan-Upton association, 0 to 9 percent slopes---Eddy Area, New Mexico

---

### Interpretive groups

*Land capability classification (irrigated):* 2e  
*Land capability classification (nonirrigated):* 6e  
*Hydrologic Soil Group:* B  
*Ecological site:* R042CY153NM - Loamy  
*Hydric soil rating:* No

### Description of Upton

#### Setting

*Landscape:* Uplands  
*Landform:* Fans, Ridges  
*Landform position (three-dimensional):* Side slope, rise  
*Down-slope shape:* Convex  
*Across-slope shape:* Convex  
*Parent material:* Residuum weathered from limestone

#### Typical profile

*H1 - 0 to 9 inches:* gravelly loam  
*H2 - 9 to 13 inches:* gravelly loam  
*H3 - 13 to 21 inches:* cemented  
*H4 - 21 to 60 inches:* very gravelly loam

#### Properties and qualities

*Slope:* 0 to 9 percent  
*Depth to restrictive feature:* 7 to 20 inches to petrocalcic  
*Drainage class:* Well drained  
*Runoff class:* High  
*Capacity of the most limiting layer to transmit water (Ksat):* Low to moderately high (0.01 to 0.60 in/hr)  
*Depth to water table:* More than 80 inches  
*Frequency of flooding:* None  
*Frequency of ponding:* None  
*Calcium carbonate, maximum content:* 75 percent  
*Maximum salinity:* Nonsaline to very slightly saline (0.0 to 2.0 mmhos/cm)  
*Sodium adsorption ratio, maximum:* 1.0  
*Available water supply, 0 to 60 inches:* Very low (about 1.4 inches)

### Interpretive groups

*Land capability classification (irrigated):* None specified  
*Land capability classification (nonirrigated):* 7s  
*Hydrologic Soil Group:* D  
*Ecological site:* R042CY159NM - Shallow Loamy  
*Hydric soil rating:* No

### Minor Components

#### Atoka

*Percent of map unit:* 3 percent  
*Ecological site:* R070BC007NM - Loamy  
*Hydric soil rating:* No

Map Unit Description: Reagan-Upton association, 0 to 9 percent slopes---Eddy Area, New Mexico

---

**Pima**

*Percent of map unit:* 2 percent

*Ecological site:* R070BC017NM - Bottomland

*Hydric soil rating:* No

**Data Source Information**

Soil Survey Area: Eddy Area, New Mexico

Survey Area Data: Version 21, Sep 9, 2025

Map Unit Description: Upton gravelly loam, 0 to 9 percent slopes---Eddy Area, New Mexico

---

## Eddy Area, New Mexico

### UG—Upton gravelly loam, 0 to 9 percent slopes

#### Map Unit Setting

*National map unit symbol:* 1w64

*Landscape:* Uplands

*Elevation:* 1,100 to 4,400 feet

*Mean annual precipitation:* 7 to 15 inches

*Mean annual air temperature:* 60 to 70 degrees F

*Frost-free period:* 200 to 240 days

*Farmland classification:* Not prime farmland

#### Map Unit Composition

*Upton and similar soils:* 96 percent

*Minor components:* 4 percent

*Estimates are based on observations, descriptions, and transects of the mapunit.*

#### Description of Upton

##### Setting

*Landscape:* Uplands

*Landform:* Fans, Ridges

*Landform position (three-dimensional):* Side slope, rise

*Down-slope shape:* Convex

*Across-slope shape:* Convex

*Parent material:* Residuum weathered from limestone

##### Typical profile

*H1 - 0 to 9 inches:* gravelly loam

*H2 - 9 to 13 inches:* gravelly loam

*H3 - 13 to 21 inches:* cemented

*H4 - 21 to 60 inches:* very gravelly loam

##### Properties and qualities

*Slope:* 0 to 9 percent

*Depth to restrictive feature:* 7 to 20 inches to petrocalcic

*Drainage class:* Well drained

*Runoff class:* High

*Capacity of the most limiting layer to transmit water (Ksat):* Low to moderately high (0.01 to 0.60 in/hr)

*Depth to water table:* More than 80 inches

*Frequency of flooding:* None

*Frequency of ponding:* None

*Calcium carbonate, maximum content:* 75 percent

*Maximum salinity:* Nonsaline to very slightly saline (0.0 to 2.0 mmhos/cm)

*Sodium adsorption ratio, maximum:* 1.0

*Available water supply, 0 to 60 inches:* Very low (about 1.4 inches)

Map Unit Description: Upton gravelly loam, 0 to 9 percent slopes---Eddy Area, New Mexico

---

### Interpretive groups

*Land capability classification (irrigated):* None specified

*Land capability classification (nonirrigated):* 7s

*Hydrologic Soil Group:* D

*Ecological site:* R070BC025NM - Shallow

*Hydric soil rating:* No

### Minor Components

#### Reagan

*Percent of map unit:* 1 percent

*Ecological site:* R070BC007NM - Loamy

*Hydric soil rating:* No

#### Atoka

*Percent of map unit:* 1 percent

*Ecological site:* R070BC007NM - Loamy

*Hydric soil rating:* No

#### Atoka

*Percent of map unit:* 1 percent

*Ecological site:* R070BC007NM - Loamy

*Hydric soil rating:* No

#### Upton

*Percent of map unit:* 1 percent

*Ecological site:* R070BC025NM - Shallow

*Hydric soil rating:* No

## Data Source Information

Soil Survey Area: Eddy Area, New Mexico

Survey Area Data: Version 21, Sep 9, 2025

# El Presidente State 003H

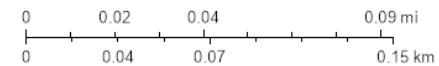


2/6/2026, 3:34:50 PM

Karst Occurrence Potential

High

1:2,257



BLM, OCD, New Mexico Tech, Microsoft, Vantor, Esri, HERE, Garmin, IPC

U.S. Fish and Wildlife Service  
**National Wetlands Inventory**

# El Presidente State 003H



U.S. Fish and Wildlife Service, National Standards and Support Team, wetlands\_team@fws.gov

February 23, 2026

**Wetlands**

- Estuarine and Marine Deepwater
- Estuarine and Marine Wetland

- Freshwater Emergent Wetland
- Freshwater Forested/Shrub Wetland
- Freshwater Pond

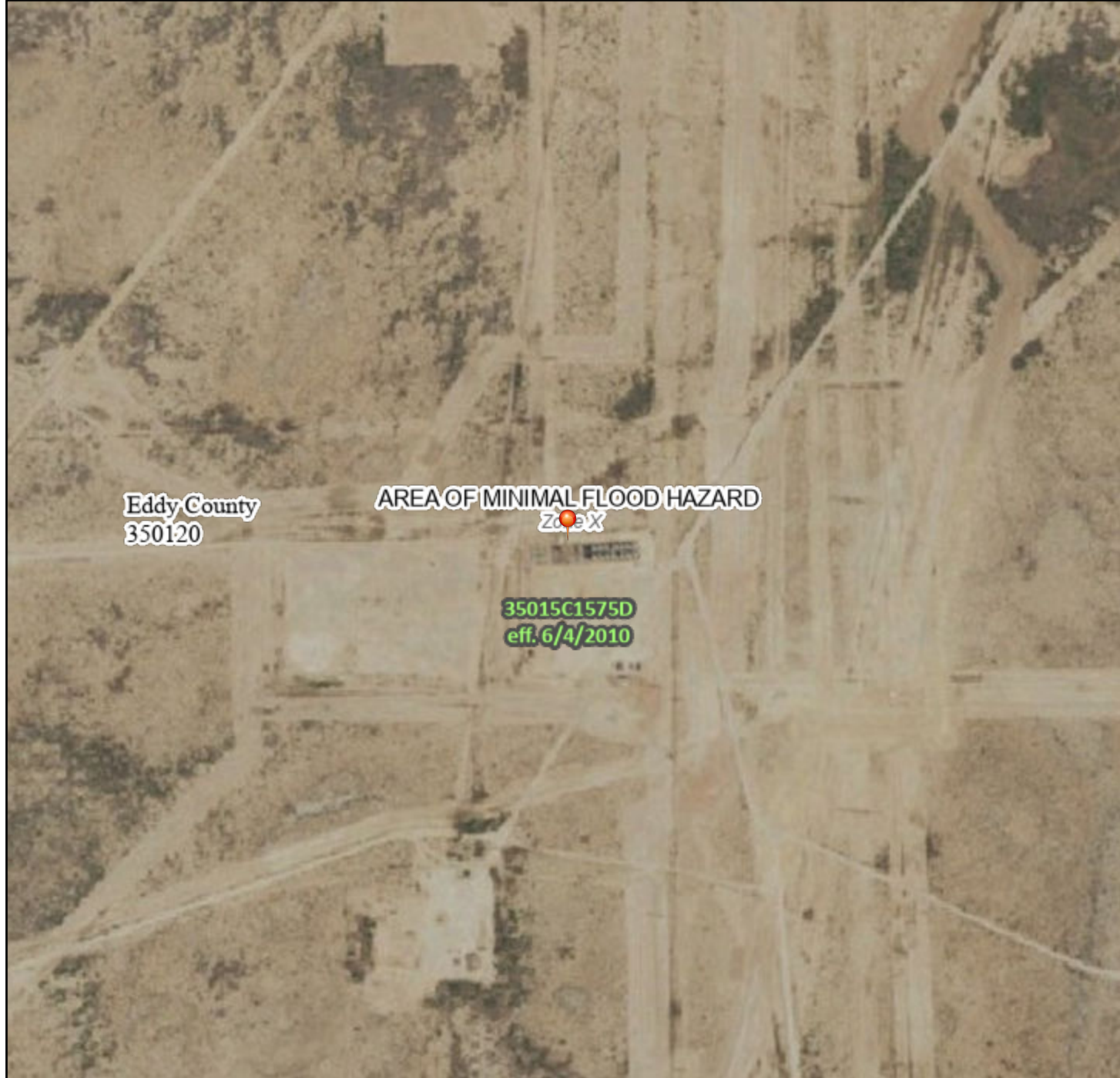
- Lake
- Other
- Riverine

This map is for general reference only. The US Fish and Wildlife Service is not responsible for the accuracy or currentness of the base data shown on this map. All wetlands related data should be used in accordance with the layer metadata found on the Wetlands Mapper web site.

# National Flood Hazard Layer FIRMette



104°9'33"W 32°14'42"N



## Legend

SEE FIS REPORT FOR DETAILED LEGEND AND INDEX MAP FOR FIRM PANEL LAYOUT

- |                                    |  |  |
|------------------------------------|--|--|
| <b>SPECIAL FLOOD HAZARD AREAS</b>  |  | Without Base Flood Elevation (BFE)<br><i>Zone A, V, A99</i>  |
|                                    |  | With BFE or Depth <i>Zone AE, AO, AH, VE, AR</i><br>Regulatory Floodway  |
| <b>OTHER AREAS OF FLOOD HAZARD</b> |  | 0.2% Annual Chance Flood Hazard, Areas of 1% annual chance flood with average depth less than one foot or with drainage areas of less than one square mile <i>Zone X</i> |
|                                    |  | Future Conditions 1% Annual Chance Flood Hazard <i>Zone X</i>  |
|                                    |  | Area with Reduced Flood Risk due to Levee. See Notes. <i>Zone X</i>  |
|                                    |  | Area with Flood Risk due to Levee <i>Zone D</i>  |
| <b>OTHER AREAS</b>                 |  | NO SCREEN Area of Minimal Flood Hazard <i>Zone X</i>   |
|                                    |  | Effective LOMRs  |
| <b>GENERAL STRUCTURES</b>          |  | Area of Undetermined Flood Hazard <i>Zone D</i>  |
|                                    |  | Channel, Culvert, or Storm Sewer   |
| <b>OTHER FEATURES</b>              |  | Levee, Dike, or Floodwall  |
|                                    |  | Cross Sections with 1% Annual Chance Water Surface Elevation   |
| <b>MAP PANELS</b>                  |  | Coastal Transect   |
|                                    |  | Base Flood Elevation Line (BFE)  |
|                                    |  | Limit of Study   |
|                                    |  | Jurisdiction Boundary  |
|                                    |  | Coastal Transect Baseline  |
|                                    |  | Profile Baseline   |
|                                    |  | Hydrographic Feature   |
| <b>MAP PANELS</b>                  |  | Digital Data Available   |
|                                    |  | No Digital Data Available  |
|                                    |  | Unmapped   |



The pin displayed on the map is an approximate point selected by the user and does not represent an authoritative property location.

This map complies with FEMA's standards for the use of digital flood maps if it is not void as described below. The basemap shown complies with FEMA's basemap accuracy standards

The flood hazard information is derived directly from the authoritative NFHL web services provided by FEMA. This map was exported on 2/6/2026 at 7:11 PM and does not reflect changes or amendments subsequent to this date and time. The NFHL and effective information may change or become superseded by new data over time.

This map image is void if the one or more of the following map elements do not appear: basemap imagery, flood zone labels, legend, scale bar, map creation date, community identifiers, FIRM panel number, and FIRM effective date. Map images for unmapped and unmodernized areas cannot be used for regulatory purposes.



1:6,000

104°8'55"W 32°14'11"N

# Attachment C

## Photographic Documentation

Marathon Oil Permian, LLC  
El Presidente State 003H  
Incident No. naPP2531043877  
Eddy County, New Mexico



Photo 1 View of containment towards northwest.



Photo 2 View of containment towards east.



Photo 3 View of containment towards south.



Photo 4 View of containment towards east.

Marathon Oil Permian, LLC  
El Presidente State 003H  
Incident No. naPP2531043877  
Eddy County, New Mexico



Photo 5 View of containment towards east.



Photo 6 View of southeast corner of containment.

Sante Fe Main Office  
Phone: (505) 476-3441

General Information  
Phone: (505) 629-6116

Online Phone Directory  
<https://www.emnrd.nm.gov/ocd/contact-us>

**State of New Mexico**  
**Energy, Minerals and Natural Resources**  
**Oil Conservation Division**  
**1220 S. St Francis Dr.**  
**Santa Fe, NM 87505**

QUESTIONS

Action 558172

**QUESTIONS**

Operator: MARATHON OIL PERMIAN LLC 600 W Illinois Ave Midland, TX 79701	OGRID: 372098
	Action Number: 558172
	Action Type: [C-141] Remediation Closure Request C-141 (C-141-v-Closure)

**QUESTIONS**

<b>Prerequisites</b>	
Incident ID (n#)	nAPP2531043877
Incident Name	NAPP2531043877 EL PRESIDENTE STATE 003H @ P-02-24S-27E
Incident Type	Produced Water Release
Incident Status	Remediation Closure Report Received

<b>Location of Release Source</b>	
<i>Please answer all the questions in this group.</i>	
Site Name	El Presidente State 003H
Date Release Discovered	10/31/2025
Surface Owner	State

<b>Incident Details</b>	
<i>Please answer all the questions in this group.</i>	
Incident Type	Produced Water Release
Did this release result in a fire or is the result of a fire	No
Did this release result in any injuries	No
Has this release reached or does it have a reasonable probability of reaching a watercourse	No
Has this release endangered or does it have a reasonable probability of endangering public health	No
Has this release substantially damaged or will it substantially damage property or the environment	No
Is this release of a volume that is or may with reasonable probability be detrimental to fresh water	No

<b>Nature and Volume of Release</b>	
<i>Material(s) released, please answer all that apply below. Any calculations or specific justifications for the volumes provided should be attached to the follow-up C-141 submission.</i>	
Crude Oil Released (bbls) Details	Not answered.
Produced Water Released (bbls) Details	Cause: Corrosion   Dump Line   Produced Water   Released: 6 BBL   Recovered: 6 BBL   Lost: 0 BBL.
Is the concentration of chloride in the produced water >10,000 mg/l	Yes
Condensate Released (bbls) Details	Not answered.
Natural Gas Vented (Mcf) Details	Not answered.
Natural Gas Flared (Mcf) Details	Not answered.
Other Released Details	Not answered.
Are there additional details for the questions above (i.e. any answer containing Other, Specify, Unknown, and/or Fire, or any negative lost amounts)	Not answered.

Sante Fe Main Office  
Phone: (505) 476-3441

General Information  
Phone: (505) 629-6116

Online Phone Directory  
<https://www.emnrd.nm.gov/ocd/contact-us>

**State of New Mexico**  
**Energy, Minerals and Natural Resources**  
**Oil Conservation Division**  
**1220 S. St Francis Dr.**  
**Santa Fe, NM 87505**

QUESTIONS, Page 2

Action 558172

**QUESTIONS (continued)**

Operator: MARATHON OIL PERMIAN LLC 600 W Illinois Ave Midland, TX 79701	OGRID: 372098
	Action Number: 558172
	Action Type: [C-141] Remediation Closure Request C-141 (C-141-v-Closure)

**QUESTIONS**

<b>Nature and Volume of Release (continued)</b>	
Is this a gas only submission (i.e. only significant Mcf values reported)	<b>No, according to supplied volumes this does not appear to be a "gas only" report.</b>
Was this a major release as defined by Subsection A of 19.15.29.7 NMAC	<b>No</b>
Reasons why this would be considered a submission for a notification of a major release	<i>Unavailable.</i>

*With the implementation of the 19.15.27 NMAC (05/25/2021), venting and/or flaring of natural gas (i.e. gas only) are to be submitted on the C-129 form.*

**Initial Response**

*The responsible party must undertake the following actions immediately unless they could create a safety hazard that would result in injury.*

The source of the release has been stopped	<b>True</b>
The impacted area has been secured to protect human health and the environment	<b>True</b>
Released materials have been contained via the use of berms or dikes, absorbent pads, or other containment devices	<b>True</b>
All free liquids and recoverable materials have been removed and managed appropriately	<b>True</b>
If all the actions described above have not been undertaken, explain why	<i>Not answered.</i>

*Per Paragraph (4) of Subsection B of 19.15.29.8 NMAC the responsible party may commence remediation immediately after discovery of a release. If remediation has begun, please prepare and attach a narrative of actions to date in the follow-up C-141 submission. If remedial efforts have been successfully completed or if the release occurred within a lined containment area (see Subparagraph (a) of Paragraph (5) of Subsection A of 19.15.29.11 NMAC), please prepare and attach all information needed for closure evaluation in the follow-up C-141 submission.*

I hereby certify that the information given above is true and complete to the best of my knowledge and understand that pursuant to OCD rules and regulations all operators are required to report and/or file certain release notifications and perform corrective actions for releases which may endanger public health or the environment. The acceptance of a C-141 report by the OCD does not relieve the operator of liability should their operations have failed to adequately investigate and remediate contamination that pose a threat to groundwater, surface water, human health or the environment. In addition, OCD acceptance of a C-141 report does not relieve the operator of responsibility for compliance with any other federal, state, or local laws and/or regulations.

I hereby agree and sign off to the above statement	Name: Jacqui Harris Title: Sr Environment Engineer Email: jacqui.harris@conocophillips.com Date: 02/26/2026
--	--

Sante Fe Main Office  
Phone: (505) 476-3441

General Information  
Phone: (505) 629-6116

Online Phone Directory  
<https://www.emnrd.nm.gov/ocd/contact-us>

**State of New Mexico**  
**Energy, Minerals and Natural Resources**  
**Oil Conservation Division**  
**1220 S. St Francis Dr.**  
**Santa Fe, NM 87505**

QUESTIONS, Page 3

Action 558172

**QUESTIONS (continued)**

Operator: MARATHON OIL PERMIAN LLC 600 W Illinois Ave Midland, TX 79701	OGRID: 372098
	Action Number: 558172
	Action Type: [C-141] Remediation Closure Request C-141 (C-141-v-Closure)

**QUESTIONS**

**Site Characterization**

Please answer all the questions in this group (only required when seeking remediation plan approval and beyond). This information must be provided to the appropriate district office no later than 90 days after the release discovery date.

What is the shallowest depth to groundwater beneath the area affected by the release in feet below ground surface (ft bgs)	Between 26 and 50 (ft.)
What method was used to determine the depth to ground water	NM OSE iWaters Database Search
Did this release impact groundwater or surface water	No
<b>What is the minimum distance, between the closest lateral extents of the release and the following surface areas:</b>	
A continuously flowing watercourse or any other significant watercourse	Between ½ and 1 (mi.)
Any lakebed, sinkhole, or playa lake (measured from the ordinary high-water mark)	Between ½ and 1 (mi.)
An occupied permanent residence, school, hospital, institution, or church	Between 1 and 5 (mi.)
A spring or a private domestic fresh water well used by less than five households for domestic or stock watering purposes	Between ½ and 1 (mi.)
Any other fresh water well or spring	Between ½ and 1 (mi.)
Incorporated municipal boundaries or a defined municipal fresh water well field	Between 1 and 5 (mi.)
A wetland	Between ½ and 1 (mi.)
A subsurface mine	Greater than 5 (mi.)
An (non-karst) unstable area	Greater than 5 (mi.)
Categorize the risk of this well / site being in a karst geology	High
A 100-year floodplain	Between ½ and 1 (mi.)
Did the release impact areas not on an exploration, development, production, or storage site	No

**Remediation Plan**

Please answer all the questions that apply or are indicated. This information must be provided to the appropriate district office no later than 90 days after the release discovery date.

Requesting a remediation plan approval with this submission	Yes
<i>Attach a comprehensive report demonstrating the lateral and vertical extents of soil contamination associated with the release have been determined, pursuant to 19.15.29.11 NMAC and 19.15.29.13 NMAC.</i>	
Have the lateral and vertical extents of contamination been fully delineated	Yes
Was this release entirely contained within a lined containment area	Yes
<i>Per Subsection B of 19.15.29.11 NMAC unless the site characterization report includes completed efforts at remediation, the report must include a proposed remediation plan in accordance with 19.15.29.12 NMAC, which includes the anticipated timelines for beginning and completing the remediation.</i>	
On what estimated date will the remediation commence	11/06/2025
On what date will (or did) the final sampling or liner inspection occur	01/19/2026
On what date will (or was) the remediation complete(d)	01/18/2026
What is the estimated surface area (in square feet) that will be remediated	2925
What is the estimated volume (in cubic yards) that will be remediated	0

*These estimated dates and measurements are recognized to be the best guess or calculation at the time of submission and may (be) change(d) over time as more remediation efforts are completed. The OCD recognizes that proposed remediation measures may have to be minimally adjusted in accordance with the physical realities encountered during remediation. If the responsible party has any need to significantly deviate from the remediation plan proposed, then it should consult with the division to determine if another remediation plan submission is required.*

Sante Fe Main Office  
Phone: (505) 476-3441

General Information  
Phone: (505) 629-6116

Online Phone Directory  
<https://www.emnrd.nm.gov/ocd/contact-us>

**State of New Mexico**  
**Energy, Minerals and Natural Resources**  
**Oil Conservation Division**  
**1220 S. St Francis Dr.**  
**Santa Fe, NM 87505**

QUESTIONS, Page 4

Action 558172

**QUESTIONS (continued)**

Operator: MARATHON OIL PERMIAN LLC 600 W Illinois Ave Midland, TX 79701	OGRID: 372098
	Action Number: 558172
	Action Type: [C-141] Remediation Closure Request C-141 (C-141-v-Closure)

**QUESTIONS**

<b>Remediation Plan (continued)</b>	
<i>Please answer all the questions that apply or are indicated. This information must be provided to the appropriate district office no later than 90 days after the release discovery date.</i>	
<b>This remediation will (or is expected to) utilize the following processes to remediate / reduce contaminants:</b>	
<i>(Select all answers below that apply.)</i>	
Is (or was) there affected material present needing to be removed	Yes
Is (or was) there a power wash of the lined containment area (to be) performed	Yes
OTHER (Non-listed remedial process)	Not answered.
<i>Per Subsection B of 19.15.29.11 NMAC unless the site characterization report includes completed efforts at remediation, the report must include a proposed remediation plan in accordance with 19.15.29.12 NMAC, which includes the anticipated timelines for beginning and completing the remediation.</i>	
I hereby certify that the information given above is true and complete to the best of my knowledge and understand that pursuant to OCD rules and regulations all operators are required to report and/or file certain release notifications and perform corrective actions for releases which may endanger public health or the environment. The acceptance of a C-141 report by the OCD does not relieve the operator of liability should their operations have failed to adequately investigate and remediate contamination that pose a threat to groundwater, surface water, human health or the environment. In addition, OCD acceptance of a C-141 report does not relieve the operator of responsibility for compliance with any other federal, state, or local laws and/or regulations.	
I hereby agree and sign off to the above statement	Name: Jacqui Harris Title: Sr Environment Engineer Email: jacqui.harris@conocophillips.com Date: 02/26/2026
<i>The OCD recognizes that proposed remediation measures may have to be minimally adjusted in accordance with the physical realities encountered during remediation. If the responsible party has any need to significantly deviate from the remediation plan proposed, then it should consult with the division to determine if another remediation plan submission is required.</i>	

Sante Fe Main Office  
Phone: (505) 476-3441

General Information  
Phone: (505) 629-6116

Online Phone Directory  
<https://www.emnrd.nm.gov/ocd/contact-us>

**State of New Mexico**  
**Energy, Minerals and Natural Resources**  
**Oil Conservation Division**  
**1220 S. St Francis Dr.**  
**Santa Fe, NM 87505**

QUESTIONS, Page 6

Action 558172

**QUESTIONS (continued)**

Operator: MARATHON OIL PERMIAN LLC 600 W Illinois Ave Midland, TX 79701	OGRID: 372098
	Action Number: 558172
	Action Type: [C-141] Remediation Closure Request C-141 (C-141-v-Closure)

**QUESTIONS**

<b>Liner Inspection Information</b>	
Last liner inspection notification (C-141L) recorded	<b>543436</b>
Liner inspection date pursuant to Subparagraph (a) of Paragraph (5) of Subsection A of 19.15.29.11 NMAC	<b>01/19/2026</b>
Was all the impacted materials removed from the liner	<b>Yes</b>
What was the liner inspection surface area in square feet	<b>10050</b>

<b>Remediation Closure Request</b>	
<i>Only answer the questions in this group if seeking remediation closure for this release because all remediation steps have been completed.</i>	
Requesting a remediation closure approval with this submission	<b>Yes</b>
Have the lateral and vertical extents of contamination been fully delineated	<b>Yes</b>
Was this release entirely contained within a lined containment area	<b>Yes</b>
What was the total surface area (in square feet) remediated	<b>2925</b>
What was the total volume (cubic yards) remediated	<b>0</b>
Summarize any additional remediation activities not included by answers (above)	<b>Liner Inspected</b>

*The responsible party must attach information demonstrating they have complied with all applicable closure requirements and any conditions or directives of the OCD. This demonstration should be in the form of a comprehensive report (in .pdf format) including a scaled site map, sampling diagrams, relevant field notes, photographs of any excavation prior to backfilling, laboratory data including chain of custody documents of final sampling, and a narrative of the remedial activities. Refer to 19.15.29.12 NMAC.*

I hereby certify that the information given above is true and complete to the best of my knowledge and understand that pursuant to OCD rules and regulations all operators are required to report and/or file certain release notifications and perform corrective actions for releases which may endanger public health or the environment. The acceptance of a C-141 report by the OCD does not relieve the operator of liability should their operations have failed to adequately investigate and remediate contamination that pose a threat to groundwater, surface water, human health or the environment. In addition, OCD acceptance of a C-141 report does not relieve the operator of responsibility for compliance with any other federal, state, or local laws and/or regulations. The responsible party acknowledges they must substantially restore, reclaim, and re-vegetate the impacted surface area to the conditions that existed prior to the release or their final land use in accordance with 19.15.29.13 NMAC including notification to the OCD when reclamation and re-vegetation are complete.

I hereby agree and sign off to the above statement	Name: Jacqui Harris Title: Sr Environment Engineer Email: jacqui.harris@conocophillips.com Date: 02/26/2026
--	--

Sante Fe Main Office  
Phone: (505) 476-3441

General Information  
Phone: (505) 629-6116

Online Phone Directory  
<https://www.emnrd.nm.gov/ocd/contact-us>

**State of New Mexico**  
**Energy, Minerals and Natural Resources**  
**Oil Conservation Division**  
**1220 S. St Francis Dr.**  
**Santa Fe, NM 87505**

CONDITIONS

Action 558172

**CONDITIONS**

Operator: MARATHON OIL PERMIAN LLC 600 W Illinois Ave Midland, TX 79701	OGRID: 372098
	Action Number: 558172
	Action Type: [C-141] Remediation Closure Request C-141 (C-141-v-Closure)

**CONDITIONS**

Created By	Condition	Condition Date
michael.buchanan	Liner inspection and closure approved. The OCD notes that the 2-business day notice was not properly submitted as the day the inspection took place was on a federal holiday 01/19/2026. Failure in the future to properly submit this notice will result in an automatic rejection.	3/9/2026