



March 11, 2026

**New Mexico Oil Conservation Division**

New Mexico Energy, Minerals, and Natural Resources Department  
1220 South St. Francis Drive  
Santa Fe, New Mexico 87505

**Re: Closure Request**  
**Pitchblende 19-30 Federal Battery**  
**Incident Number nAPP2601350798**  
**Lea County, New Mexico**

To Whom It May Concern:

COG Operating, LLC, (COG), has prepared this *Closure Request* to document the findings of a liner integrity inspection conducted at the Pitchblende 19-30 Federal Battery (Site) following the release of produced water within a lined containment. Based on the liner integrity inspection activities, COG is submitting this Closure Request, describing assessment activities that have occurred and requesting no further action and closure for Incident Number nAPP2601350798.

**SITE DESCRIPTION AND RELEASE SUMMARY**

The site is located in Unit A, Section 19, Township 25 South, Range 35 East, in Lea County, New Mexico (32.1219124, -103.4000613) and is associated with oil and gas exploration and production operations on surface lands managed by the Bureau of Land Management (BLM).

On January 13, 2026, field personnel discovered a leak on a produced water pump causing seven point seven eight six seven (7.7867) barrels of produced water to be released into a lined containment. A vacuum truck was dispatched to the site to recover free-standing fluids and approximately seven (7) barrels of fluid were recovered. The pump was isolated to prevent fluid being further released. COG reported the release to the New Mexico Oil Conservation Division (NMOCD) on a *Release Notification Form C-141* (Form C-141) on January 13, 2026. The release was assigned Incident Number nAPP2601350798.

## **SITE CHARACTERIZATION AND CLOSURE CRITERIA**

The site is located within a low karst area. Based on a review of the New Mexico Office of State Engineers databases, there is no known water source within a 0.50-mile radius of the location. The closest well is located approximately 0.65 miles Northeast of the Site in Unit Letter M, S17, T25S, R35E and was drilled in 2025. The well has a reported depth of 105 feet below ground surface and no groundwater was encountered. Per the NMOCD regulatory criteria established in 19.15.29.12 NMAC, the following criteria were utilized in assessing the site.

- Benzene: 10 milligrams per kilogram (mg/kg).
- Benzene, toluene, ethylbenzene, and total xylenes (BTEX): 50 mg/kg.
- TPH: 100 mg/kg (GRO + DRO + MRO).
- Chloride: 600 mg/kg.

## **LINER INTEGRITY INSPECTION ACTIVITIES**

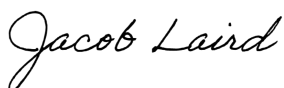
A 48-hour advance notice of the liner inspection was submitted to the NMOCD on March 6, 2026. Prior to conducting the liner integrity inspection, COG operations power washed the liner to remove dirt and debris and recover any residual produced water. A liner integrity inspection was conducted by Jacob Laird on March 11, 2026. Upon inspection, no rips, tears, holes, or damage was observed. The liner was determined to be sufficient, and all released fluids have been removed. Refer to photolog for details.

## **CLOSURE REQUEST**

Based on the liner inspection throughout the facility, the liner was determined to be sufficient. The release was contained laterally by the lined containment and the liner was performing as designed. No further actions are required at the site. COG, LLC respectfully requests that the New Mexico Oil Conservation Division grant closure approval for Incident Number nAPP2601350798.

Should you have any questions or concerns please do not hesitate to contact me.

Sincerely,



Jacob Laird  
Environmental Engineer  
jacob.laird@conocophillips.com

Appendices:

Figures- Site Map Overview, Topography Map, Secondary Containment Map

Appendix A: NMOCD Correspondence

Appendix B: Photolog

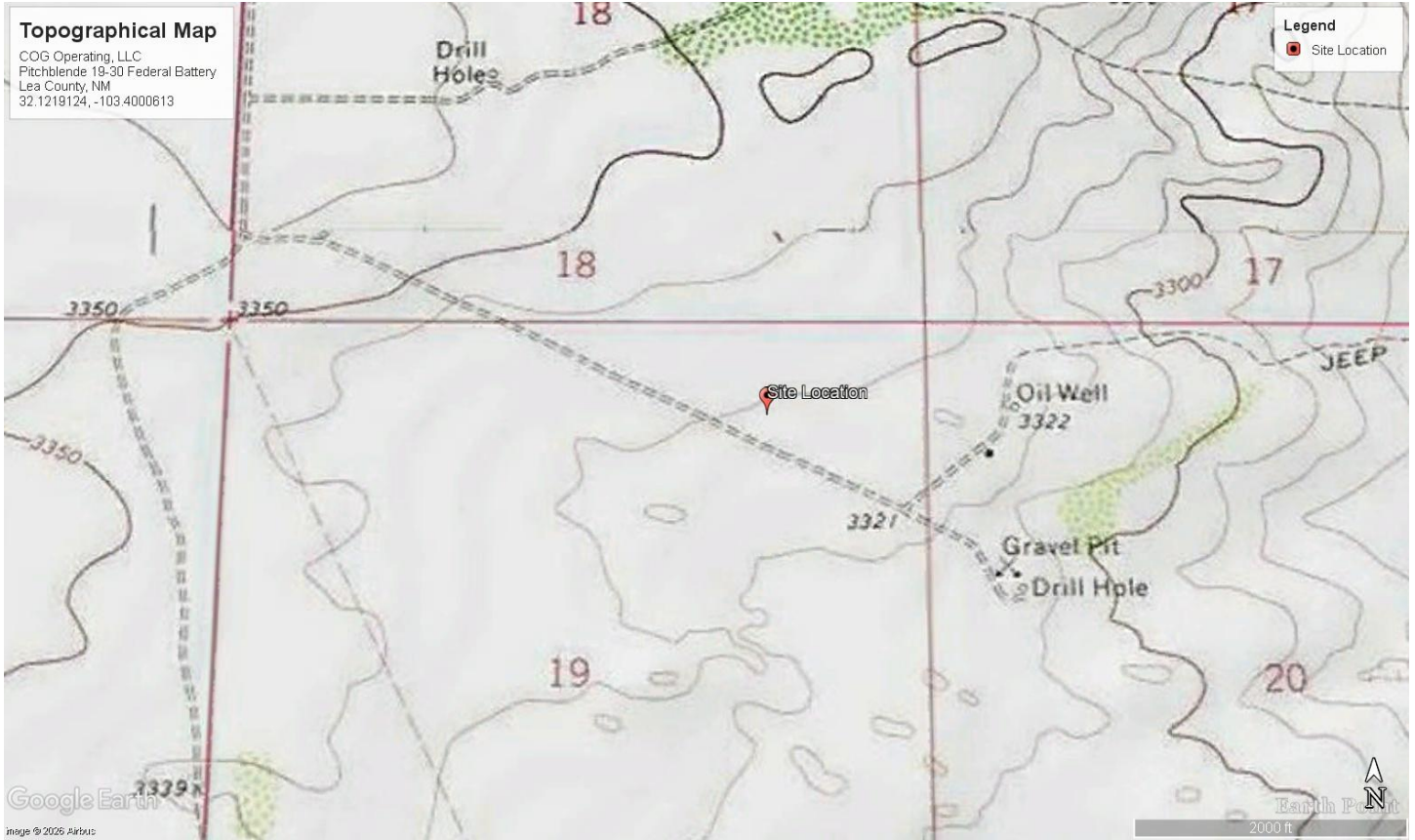
Appendix C: Site Characterization and Ground Water

Figures: Site Maps



# Overview Map

COG Operating, LLC  
Pitchblende 19-30 Federal Battery  
Lea County, New Mexico  
32.1219124, -103.4000613



# Topographical Map

COG Operating, LLC  
Pitchblende 19-30 Federal Battery  
Lea County, New Mexico  
32.1219124, -103.4000613



## Secondary Containment Map

COG Operating, LLC  
Pitchblende 19-30 Federal Battery  
Lea County, New Mexico  
32.1219124, -103.4000613

Appendix A: NMOCD Correspondence

Spill Calculation - On-Pad Surface Pool Spill

Convert Irregular shape into a series of rectangles	Length (ft.)	Width (ft.)	Average Depth (in.)	Estimated <u>Pool</u> Area (sq. ft.)	Estimated volume of each pool area (bbl.)	Penetration allowance (ft.)	Total Estimated Volume of Spill (bbl.)	Percentage of Oil if Spilled Fluid is a Mixture (%)	Total Estimated Volume of Spilled Oil (bbl.)	Total Estimated Volume of Spilled Liquid other than Oil (bbl.)
Rectangle A	20	15	0.3	300.00	1.11	0.00	1.11		0.00	1.11
Rectangle B	20	15	0.3	300.00	1.11	0.00	1.11		0.00	1.11
Rectangle C	20	15	0.3	300.00	1.11	0.00	1.11		0.00	1.11
Rectangle D	22	10	0.3	220.00	0.82	0.00	0.82		0.00	0.82
Rectangle E	11	20	0.3	220.00	0.82	0.00	0.82		0.00	0.82
Rectangle F	11	20	0.3	220.00	0.82	0.00	0.82		0.00	0.82
Rectangle G	24	27	0.3	648.00	2.40	0.00	2.41		0.00	2.41
Rectangle H				0.00	0.00	0.00	0.00		0.00	0.00
Rectangle I				0.00	0.00	0.00	0.00		0.00	0.00
Rectangle J				0.00	0.00	0.00	0.00		0.00	0.00
Total Volume Release, Soil not impacted:							7.7867		0.0000	7.7867

Sante Fe Main Office  
Phone: (505) 476-3441

General Information  
Phone: (505) 629-6116

Online Phone Directory  
<https://www.emnrd.nm.gov/ocd/contact-us>

**State of New Mexico**  
**Energy, Minerals and Natural Resources**  
**Oil Conservation Division**  
**1220 S. St Francis Dr.**  
**Santa Fe, NM 87505**

QUESTIONS

Action 542813

**QUESTIONS**

Operator: COG OPERATING LLC 600 W Illinois Ave Midland, TX 79701	OGRID: 229137
	Action Number: 542813
	Action Type: [C-141] Initial C-141 (C-141-v-Initial)

**QUESTIONS**

<b>Prerequisites</b>	
Incident ID (n#)	nAPP2601350798
Incident Name	NAPP2601350798 PITCHBLENDE 19-30 CTB @ FAPP2202345727
Incident Type	Produced Water Release
Incident Status	Initial C-141 Received
Incident Facility	[fAPP2202345727] Pitchblende 19-30 Fed Battery

<b>Location of Release Source</b>	
<i>Please answer all the questions in this group.</i>	
Site Name	Pitchblende 19-30 CTB
Date Release Discovered	01/13/2026
Surface Owner	Federal

<b>Incident Details</b>	
<i>Please answer all the questions in this group.</i>	
Incident Type	Produced Water Release
Did this release result in a fire or is the result of a fire	No
Did this release result in any injuries	No
Has this release reached or does it have a reasonable probability of reaching a watercourse	No
Has this release endangered or does it have a reasonable probability of endangering public health	No
Has this release substantially damaged or will it substantially damage property or the environment	No
Is this release of a volume that is or may with reasonable probability be detrimental to fresh water	No

<b>Nature and Volume of Release</b>	
<i>Material(s) released, please answer all that apply below. Any calculations or specific justifications for the volumes provided should be attached to the follow-up C-141 submission.</i>	
Crude Oil Released (bbls) Details	Not answered.
Produced Water Released (bbls) Details	Cause: Normal Operations   Pump   Produced Water   Released: 8 BBL   Recovered: 7 BBL   Lost: 1 BBL.
Is the concentration of chloride in the produced water >10,000 mg/l	Yes
Condensate Released (bbls) Details	Not answered.
Natural Gas Vented (Mcf) Details	Not answered.
Natural Gas Flared (Mcf) Details	Not answered.
Other Released Details	Not answered.
Are there additional details for the questions above (i.e. any answer containing Other, Specify, Unknown, and/or Fire, or any negative lost amounts)	Not answered.

Sante Fe Main Office  
Phone: (505) 476-3441

General Information  
Phone: (505) 629-6116

Online Phone Directory  
<https://www.emnrd.nm.gov/ocd/contact-us>

**State of New Mexico**  
**Energy, Minerals and Natural Resources**  
**Oil Conservation Division**  
**1220 S. St Francis Dr.**  
**Santa Fe, NM 87505**

QUESTIONS, Page 2

Action 542813

**QUESTIONS (continued)**

Operator: COG OPERATING LLC 600 W Illinois Ave Midland, TX 79701	OGRID: 229137
	Action Number: 542813
	Action Type: [C-141] Initial C-141 (C-141-v-Initial)

**QUESTIONS**

<b>Nature and Volume of Release (continued)</b>	
Is this a gas only submission (i.e. only significant Mcf values reported)	<b>No, according to supplied volumes this does not appear to be a "gas only" report.</b>
Was this a major release as defined by Subsection A of 19.15.29.7 NMAC	<b>No</b>
Reasons why this would be considered a submission for a notification of a major release	<i>Unavailable.</i>

*With the implementation of the 19.15.27 NMAC (05/25/2021), venting and/or flaring of natural gas (i.e. gas only) are to be submitted on the C-129 form.*

**Initial Response**

*The responsible party must undertake the following actions immediately unless they could create a safety hazard that would result in injury.*

The source of the release has been stopped	<b>True</b>
The impacted area has been secured to protect human health and the environment	<b>True</b>
Released materials have been contained via the use of berms or dikes, absorbent pads, or other containment devices	<b>True</b>
All free liquids and recoverable materials have been removed and managed appropriately	<b>True</b>
If all the actions described above have not been undertaken, explain why	<i>Not answered.</i>

*Per Paragraph (4) of Subsection B of 19.15.29.8 NMAC the responsible party may commence remediation immediately after discovery of a release. If remediation has begun, please prepare and attach a narrative of actions to date in the follow-up C-141 submission. If remedial efforts have been successfully completed or if the release occurred within a lined containment area (see Subparagraph (a) of Paragraph (5) of Subsection A of 19.15.29.11 NMAC), please prepare and attach all information needed for closure evaluation in the follow-up C-141 submission.*

I hereby certify that the information given above is true and complete to the best of my knowledge and understand that pursuant to OCD rules and regulations all operators are required to report and/or file certain release notifications and perform corrective actions for releases which may endanger public health or the environment. The acceptance of a C-141 report by the OCD does not relieve the operator of liability should their operations have failed to adequately investigate and remediate contamination that pose a threat to groundwater, surface water, human health or the environment. In addition, OCD acceptance of a C-141 report does not relieve the operator of responsibility for compliance with any other federal, state, or local laws and/or regulations.

I hereby agree and sign off to the above statement	Name: Jacob Laird Title: Environmental Engineer Email: jacob.laird@conocophillips.com Date: 01/13/2026
----------------------------------------------------	-----------------------------------------------------------------------------------------------------------------

Sante Fe Main Office  
Phone: (505) 476-3441

General Information  
Phone: (505) 629-6116

Online Phone Directory  
<https://www.emnrd.nm.gov/ocd/contact-us>

**State of New Mexico**  
**Energy, Minerals and Natural Resources**  
**Oil Conservation Division**  
**1220 S. St Francis Dr.**  
**Santa Fe, NM 87505**

QUESTIONS, Page 3

Action 542813

**QUESTIONS (continued)**

Operator: COG OPERATING LLC 600 W Illinois Ave Midland, TX 79701	OGRID: 229137
	Action Number: 542813
	Action Type: [C-141] Initial C-141 (C-141-v-Initial)

**QUESTIONS**

<b>Site Characterization</b>	
<i>Please answer all the questions in this group (only required when seeking remediation plan approval and beyond). This information must be provided to the appropriate district office no later than 90 days after the release discovery date.</i>	
What is the shallowest depth to groundwater beneath the area affected by the release in feet below ground surface (ft bgs)	Not answered.
What method was used to determine the depth to ground water	Not answered.
Did this release impact groundwater or surface water	Not answered.
<b>What is the minimum distance, between the closest lateral extents of the release and the following surface areas:</b>	
A continuously flowing watercourse or any other significant watercourse	Not answered.
Any lakebed, sinkhole, or playa lake (measured from the ordinary high-water mark)	Not answered.
An occupied permanent residence, school, hospital, institution, or church	Not answered.
A spring or a private domestic fresh water well used by less than five households for domestic or stock watering purposes	Not answered.
Any other fresh water well or spring	Not answered.
Incorporated municipal boundaries or a defined municipal fresh water well field	Not answered.
A wetland	Not answered.
A subsurface mine	Not answered.
An (non-karst) unstable area	Not answered.
Categorize the risk of this well / site being in a karst geology	Not answered.
A 100-year floodplain	Not answered.
Did the release impact areas not on an exploration, development, production, or storage site	Not answered.

<b>Remediation Plan</b>	
<i>Please answer all the questions that apply or are indicated. This information must be provided to the appropriate district office no later than 90 days after the release discovery date.</i>	
Requesting a remediation plan approval with this submission	No
<i>The OCD recognizes that proposed remediation measures may have to be minimally adjusted in accordance with the physical realities encountered during remediation. If the responsible party has any need to significantly deviate from the remediation plan proposed, then it should consult with the division to determine if another remediation plan submission is required.</i>	

Sante Fe Main Office  
Phone: (505) 476-3441

General Information  
Phone: (505) 629-6116

Online Phone Directory  
<https://www.emnrd.nm.gov/ocd/contact-us>

**State of New Mexico**  
**Energy, Minerals and Natural Resources**  
**Oil Conservation Division**  
**1220 S. St Francis Dr.**  
**Santa Fe, NM 87505**

CONDITIONS

Action 542813

**CONDITIONS**

Operator: COG OPERATING LLC 600 W Illinois Ave Midland, TX 79701	OGRID: 229137
	Action Number: 542813
	Action Type: [C-141] Initial C-141 (C-141-v-Initial)

**CONDITIONS**

Created By	Condition	Condition Date
rhamlet	None	1/14/2026

Sante Fe Main Office  
Phone: (505) 476-3441

General Information  
Phone: (505) 629-6116

Online Phone Directory  
<https://www.emnrd.nm.gov/ocd/contact-us>

**State of New Mexico**  
**Energy, Minerals and Natural Resources**  
**Oil Conservation Division**  
**1220 S. St Francis Dr.**  
**Santa Fe, NM 87505**

QUESTIONS

Action 560599

**QUESTIONS**

Operator: COG OPERATING LLC 600 W Illinois Ave Midland, TX 79701	OGRID: 229137
	Action Number: 560599
	Action Type: [NOTIFY] Notification Of Liner Inspection (C-141L)

**QUESTIONS**

<b>Prerequisites</b>	
Incident ID (n#)	nAPP2601350798
Incident Name	NAPP2601350798 PITCHBLENDE 19-30 CTB @ FAPP2202345727
Incident Type	Produced Water Release
Incident Status	Initial C-141 Approved
Incident Facility	[fAPP2202345727] Pitchblende 19-30 Fed Battery

<b>Location of Release Source</b>	
Site Name	Pitchblende 19-30 CTB
Date Release Discovered	01/13/2026
Surface Owner	Federal

<b>Liner Inspection Event Information</b>	
<i>Please answer all the questions in this group.</i>	
What is the liner inspection surface area in square feet	6,613
Have all the impacted materials been removed from the liner	Yes
Liner inspection date pursuant to Subparagraph (a) of Paragraph (5) of Subsection A of 19.15.29.11 NMAC	03/11/2026
Time liner inspection will commence	10:00 AM
Please provide any information necessary for observers to liner inspection	Jacob Laird 575-703-5482
Please provide any information necessary for navigation to liner inspection site	32.1219124, -103.4000613

Sante Fe Main Office  
Phone: (505) 476-3441

General Information  
Phone: (505) 629-6116

Online Phone Directory  
<https://www.emnrd.nm.gov/ocd/contact-us>

**State of New Mexico**  
**Energy, Minerals and Natural Resources**  
**Oil Conservation Division**  
**1220 S. St Francis Dr.**  
**Santa Fe, NM 87505**

CONDITIONS

Action 560599

**CONDITIONS**


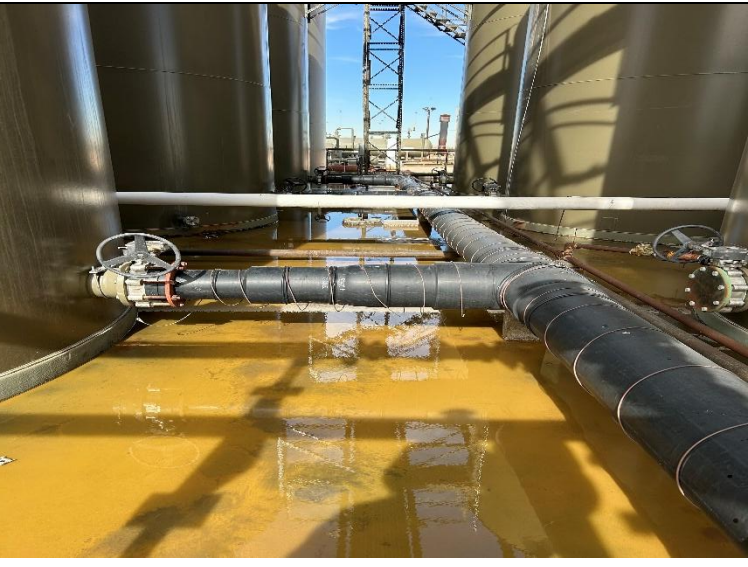
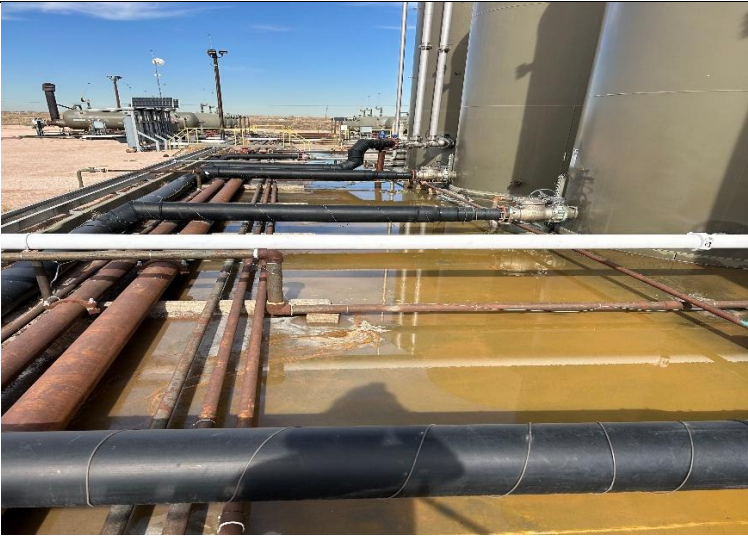
Operator: COG OPERATING LLC 600 W Illinois Ave Midland, TX 79701	OGRID: 229137
	Action Number: 560599
	Action Type: [NOTIFY] Notification Of Liner Inspection (C-141L)

**CONDITIONS**

Created By	Condition	Condition Date
jlaire	Failure to notify the OCD of liner inspections including any changes in date/time per the requirements of 19.15.29.11.A(5)(a)(ii) NMAC, may result in the inspection not being accepted.	3/6/2026

Appendix B: Photolog

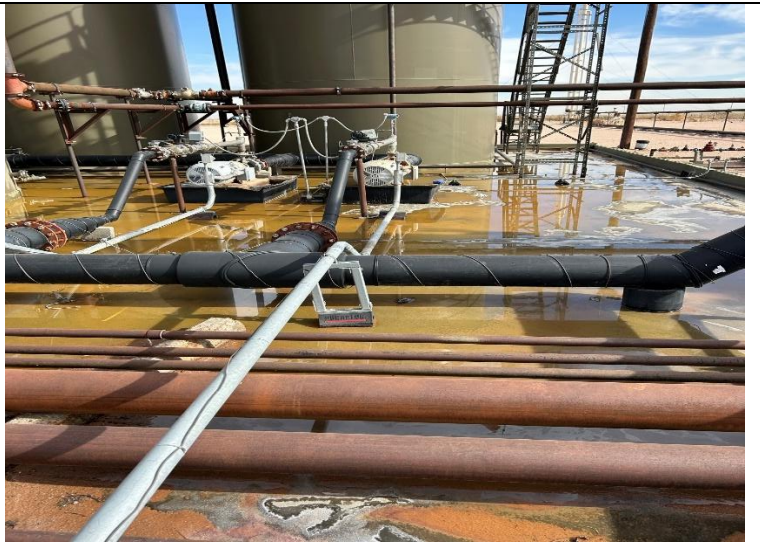
### Photographic Log

<p><b>Facility:</b> Pitchblende 19-30 Federal Battery</p> <p><b>County:</b> Lea County, New Mexico</p> <p><b>Description:</b> Facility Sign</p>	<p>Date &amp; Time: Wed, Mar 11, 2026 at 10:00:51 MDT Position: +032.20834° / -103.402194° (±7.9ft) Altitude: 3340ft (±3.8ft) Datum: WGS-84 Azimuth/Bearing: 350° N06W 6293m (±10°) Elevation Angle: -11.0° Horizon Angle: +00.6° Zoom: 0.5X Pitchblende 19A CTB</p> 
<p><b>Facility:</b> Pitchblende 19-30 Federal Battery</p> <p><b>County:</b> Lea County, New Mexico</p> <p><b>Description:</b> Original release photo from 1/13/2026</p>	
<p><b>Facility:</b> Pitchblende 19-30 Federal Battery</p> <p><b>County:</b> Lea County, New Mexico</p> <p><b>Description:</b> Original release photo from 1/13/2026</p>	

**Facility:** Pitchblende 19-30 Federal Battery

**County:** Lea County, New Mexico

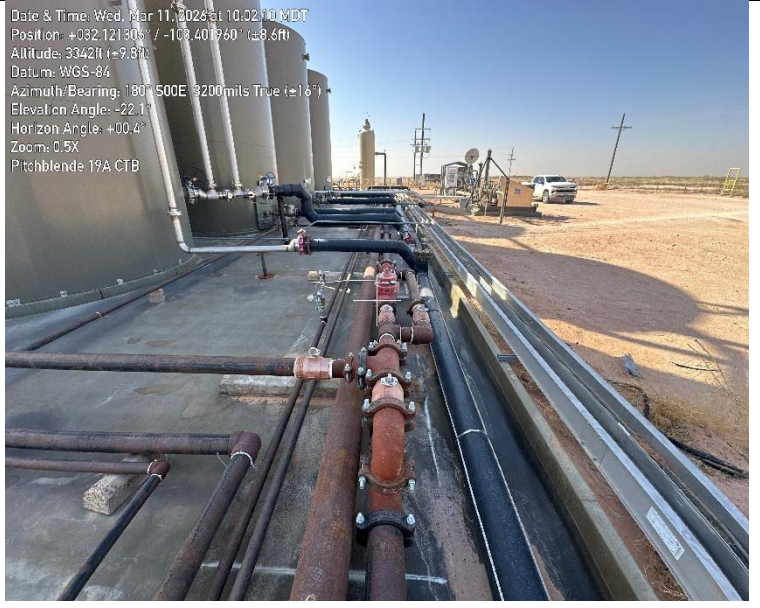
**Description:** Original release photo from 1/13/2026



**Facility:** Pitchblende 19-30 Federal Battery

**County:** Lea County, New Mexico

**Description:** View facing South. Lined area North of production tanks and production piping.



**Facility:** Pitchblende 19-30 Federal Battery

**County:** Lea County, New Mexico

**Description:** View facing South. Lined area North of production tanks and production piping.



**Facility:** Pitchblende 19-30 Federal Battery

**County:** Lea County, New Mexico

**Description:** View facing South. Lined area North of production tanks and production piping.



**Facility:** Pitchblende 19-30 Federal Battery

**County:** Lea County, New Mexico

**Description:** View facing South. Lined area North of production tanks and production piping.



**Facility:** Pitchblende 19-30 Federal Battery

**County:** Lea County, New Mexico

**Description:** View facing South. Lined area West of production tanks and production piping.



**Facility:** Pitchblende 19-30 Federal Battery

**County:** Lea County, New Mexico

**Description:** View facing South. Lined area West of production tanks and production piping.



**Facility:** Pitchblende 19-30 Federal Battery

**County:** Lea County, New Mexico

**Description:** View facing North. Lined area between production tanks.



**Facility:** Pitchblende 19-30 Federal Battery

**County:** Lea County, New Mexico

**Description:** View facing South. Lined area between production tanks.



**Facility:** Pitchblende 19-30 Federal Battery

**County:** Lea County, New Mexico

**Description:** View facing South. Lined area East of production tanks.



**Facility:** Pitchblende 19-30 Federal Battery

**County:** Lea County, New Mexico

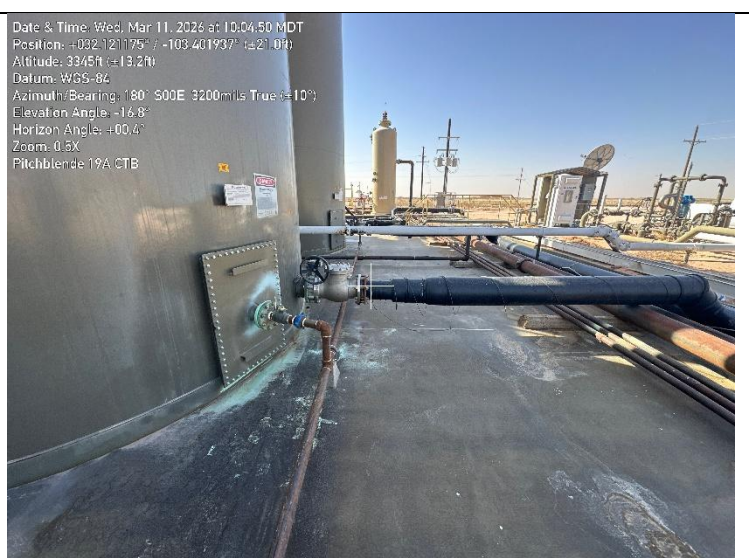
**Description:** View facing South. Lined area West of production tanks and production piping.



**Facility:** Pitchblende 19-30 Federal Battery

**County:** Lea County, New Mexico

**Description:** View facing South. Lined area West of production tanks and production piping.



**Facility:** Pitchblende 19-30 Federal Battery

**County:** Lea County, New Mexico

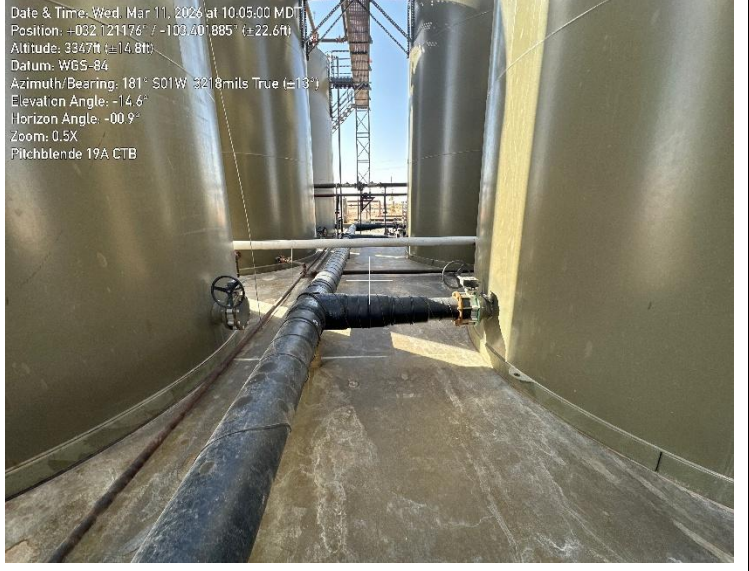
**Description:** View facing East. Lined area between production tanks.



**Facility:** Pitchblende 19-30 Federal Battery

**County:** Lea County, New Mexico

**Description:** View facing South. Lined area between production tanks.



**Facility:** Pitchblende 19-30 Federal Battery

**County:** Lea County, New Mexico

**Description:** View facing South. Lined area East of production tanks.



**Facility:** Pitchblende 19-30 Federal Battery

**County:** Lea County, New Mexico

**Description:** View facing South. Lined area West of production tanks and production piping.



**Facility:** Pitchblende 19-30 Federal Battery

**County:** Lea County, New Mexico

**Description:** View facing South. Lined area West of production tanks and production piping.



**Facility:** Pitchblende 19-30 Federal Battery

**County:** Lea County, New Mexico

**Description:** View facing East. Lined area between production tanks.



**Facility:** Pitchblende 19-30 Federal Battery

**County:** Lea County, New Mexico

**Description:** View facing South. Lined area between production tanks and production piping.



**Facility:** Pitchblende 19-30 Federal Battery

**County:** Lea County, New Mexico

**Description:** View facing South. Lined area East of production tanks.



**Facility:** Pitchblende 19-30 Federal Battery

**County:** Lea County, New Mexico

**Description:** View facing South. Lined area West of production tanks and production piping.



**Facility:** Pitchblende 19-30 Federal Battery

**County:** Lea County, New Mexico

**Description:** View facing Southeast. Lined area near production equipment.



**Facility:** Pitchblende 19-30 Federal Battery

**County:** Lea County, New Mexico

**Description:** View facing South. Lined area near production equipment and piping.



**Facility:** Pitchblende 19-30 Federal Battery

**County:** Lea County, New Mexico

**Description:** View facing Northeast. Lined area between production tanks.



**Facility:** Pitchblende 19-30 Federal Battery

**County:** Lea County, New Mexico

**Description:** View facing South. Lined area East of production tanks.



**Facility:** Pitchblende 19-30 Federal Battery

**County:** Lea County, New Mexico

**Description:** View facing West. Lined area South of production tanks.



**Facility:** Pitchblende 19-30 Federal Battery

**County:** Lea County, New Mexico

**Description:** View facing East. Lined area South of production tanks.



Appendix C: Site Characterization and Ground Water



# New Mexico Office of the State Engineer

## Water Column/Average Depth to Water

(A CLW##### in the POD suffix indicates the POD has been replaced & no longer serves a water right file.)

(R=POD has been replaced, O=orphaned, C=the file is closed)

(quarters are smallest to largest)

(meters)

(In feet)

POD Number	Code	Sub basin	County	Q64	Q16	Q4	Sec	Tws	Range	X	Y	Map	Distance	Well Depth	Depth Water	Water Column
<a href="#">C 04962 POD1</a>		CUB	LE	SE	SE	SW	17	25S	35E	651770.3	3555252.0		1044	105		

Average Depth to Water: **0 feet**

Minimum Depth: **0 feet**

Maximum Depth: **0 feet**

**Record Count:** 1

**Basin/County Search:**

**County:** LE

**UTM Filters (in meters):**

**Easting:** 650760.12

**Northing:** 3554984.61

**Radius:** 1100

\* UTM location was derived from PLSS - see Help

The data is furnished by the NMOSE/ISC and is accepted by the recipient with the expressed understanding that the OSE/ISC make no warranties, expressed or implied, concerning the accuracy, completeness, reliability, usability, or suitability for any particular purpose of the data.



# WELL RECORD & LOG

OFFICE OF THE STATE ENGINEER

[www.ose.state.nm.us](http://www.ose.state.nm.us)

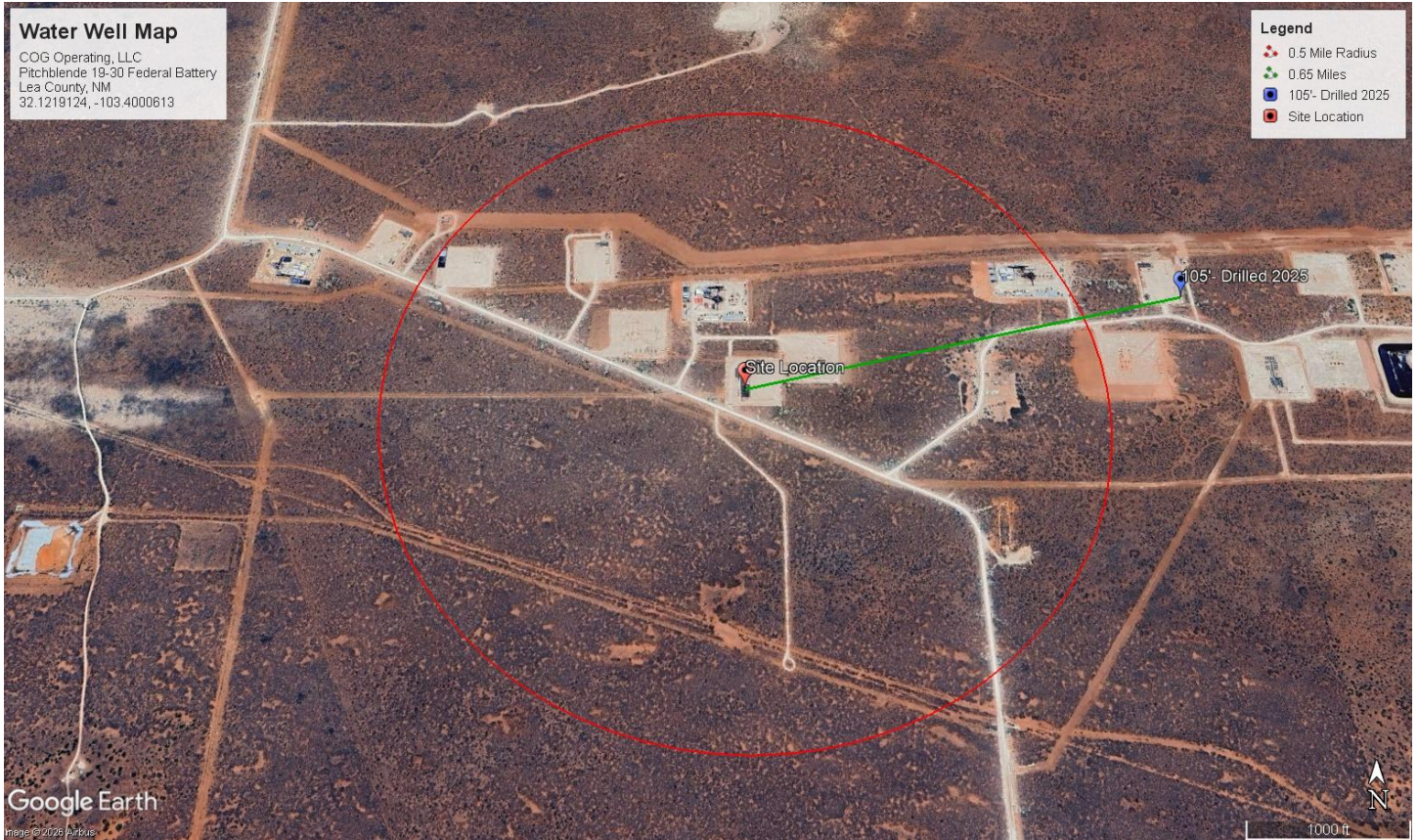
<b>1. GENERAL AND WELL LOCATION</b>	OSE POD NO. (WELL NO.) POD1		WELL TAG ID NO. N/A		OSE FILE NO(S). C 4962 POD1			
	WELL OWNER NAME(S) Matador Production Company				PHONE (OPTIONAL)			
	WELL OWNER MAILING ADDRESS R347 N26th Rural Street 2nd Floor				CITY Artesia	STATE NM	ZIP 88210	
	WELL LOCATION (FROM GPS)	DEGREES LATITUDE	MINUTES 07	SECONDS 24.4	N	* ACCURACY REQUIRED: ONE TENTH OF A SECOND		
		LONGITUDE	103	23	28.1	W	* DATUM REQUIRED: WGS 84	
DESCRIPTION RELATING WELL LOCATION TO STREET ADDRESS AND COMMON LANDMARKS – PLSS (SECTION, TOWNSHIP, RANGE) WHERE AVAILABLE Unit N, Section 17, Township 25S, Range 35E								
<b>2. DRILLING &amp; CASING INFORMATION</b>	LICENSE NO. WD1188		NAME OF LICENSED DRILLER John Scarborough			NAME OF WELL DRILLING COMPANY John Scarborough Drilling Inc.		
	DRILLING STARTED 5/9/2025	DRILLING ENDED 5/9/2025	DEPTH OF COMPLETED WELL (FT) 105	BORE HOLE DEPTH (FT) 105	DEPTH WATER FIRST ENCOUNTERED (FT) N/A			
	COMPLETED WELL IS: <input type="checkbox"/> ARTESIAN <input checked="" type="checkbox"/> DRY HOLE <input type="checkbox"/> SHALLOW (UNCONFINED)					STATIC WATER LEVEL IN COMPLETED WELL (FT) N/A		
	DRILLING FLUID: <input checked="" type="checkbox"/> AIR <input type="checkbox"/> MUD ADDITIVES – SPECIFY:							
	DRILLING METHOD: <input checked="" type="checkbox"/> ROTARY <input type="checkbox"/> HAMMER <input type="checkbox"/> CABLE TOOL <input type="checkbox"/> OTHER – SPECIFY:							
	DEPTH (feet bgl)		BORE HOLE DIAM (inches)	CASING MATERIAL AND/OR GRADE (include each casing string, and note sections of screen)	CASING CONNECTION TYPE (add coupling diameter)	CASING INSIDE DIAM. (inches)	CASING WALL THICKNESS (inches)	SLOT SIZE (inches)
	FROM	TO						
	0	105	5.00	Soil Boring				

OSE DII ROSWELL NM  
2 JUN '25 AM9:21

<b>3. ANNULAR MATERIAL</b>	DEPTH (feet bgl)		BORE HOLE DIAM. (inches)	LIST ANNULAR SEAL MATERIAL AND GRAVEL PACK SIZE-RANGE BY INTERVAL	AMOUNT (cubic feet)	METHOD OF PLACEMENT
	FROM	TO				
				N/A		

FOR OSE INTERNAL USE				WR-20 WELL RECORD & LOG (Version 04/30/19)			
FILE NO.	C-4962-POD 1	POD NO.	1	TRN NO.	784260	PAGE 1 OF 2	
LOCATION	Mon 25.35.17.443			WELL TAG ID NO.			



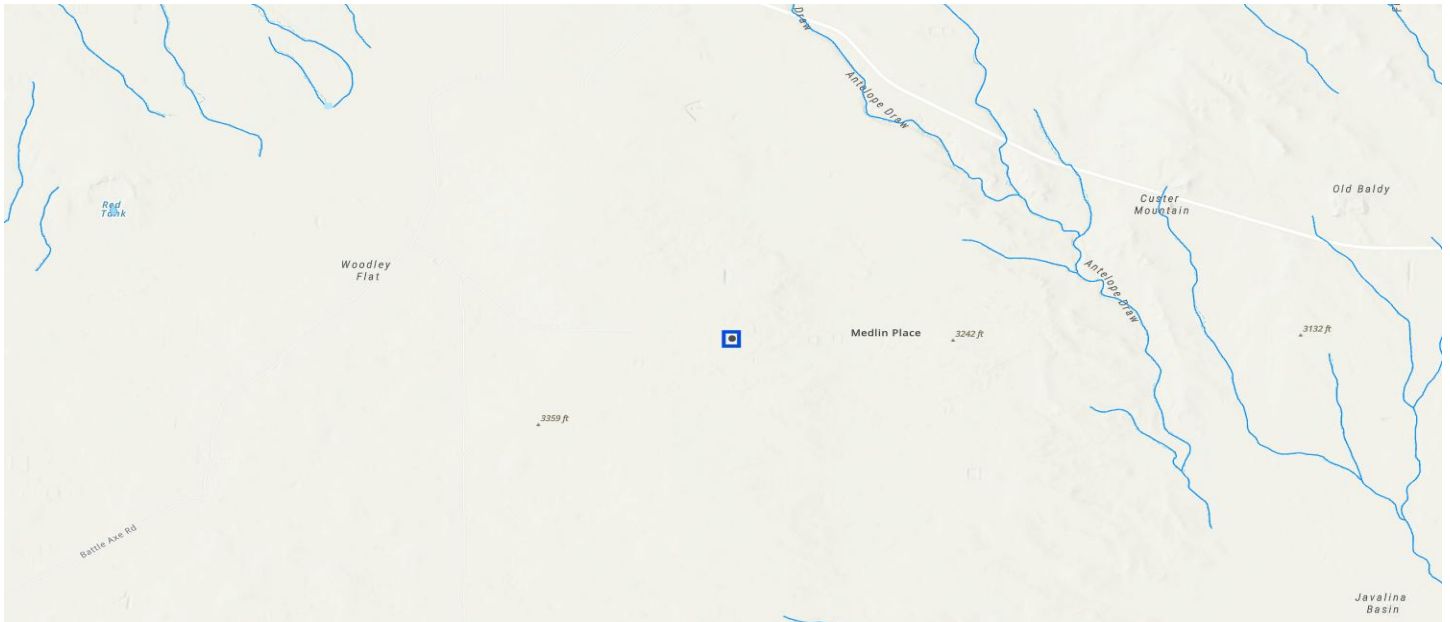


## Neatest Water Well Map

COG Operating, LLC  
Pitchblende 19-30 Federal Battery  
Lea County, New Mexico  
32.1219124, -103.4000613



**Karst Map**  
COG Operating, LLC  
Pitchblende 19-30 Federal Battery  
Lea County, New Mexico  
32.1219124, -103.4000613



# Hydrology Map

COG Operating, LLC  
Pitchblende 19-30 Federal Battery  
Lea County, New Mexico  
32.1219124, -103.4000613

Sante Fe Main Office  
Phone: (505) 476-3441

General Information  
Phone: (505) 629-6116

Online Phone Directory  
<https://www.emnrd.nm.gov/ocd/contact-us>

**State of New Mexico**  
**Energy, Minerals and Natural Resources**  
**Oil Conservation Division**  
**1220 S. St Francis Dr.**  
**Santa Fe, NM 87505**

QUESTIONS

Action 561902

**QUESTIONS**

Operator: COG OPERATING LLC 600 W Illinois Ave Midland, TX 79701	OGRID: 229137
	Action Number: 561902
	Action Type: [C-141] Remediation Closure Request C-141 (C-141-v-Closure)

**QUESTIONS**

<b>Prerequisites</b>	
Incident ID (n#)	nAPP2601350798
Incident Name	NAPP2601350798 PITCHBLENDE 19-30 CTB @ FAPP2202345727
Incident Type	Produced Water Release
Incident Status	Remediation Closure Report Received
Incident Facility	[fAPP2202345727] Pitchblende 19-30 Fed Battery

<b>Location of Release Source</b>	
<i>Please answer all the questions in this group.</i>	
Site Name	Pitchblende 19-30 CTB
Date Release Discovered	01/13/2026
Surface Owner	Federal

<b>Incident Details</b>	
<i>Please answer all the questions in this group.</i>	
Incident Type	Produced Water Release
Did this release result in a fire or is the result of a fire	No
Did this release result in any injuries	No
Has this release reached or does it have a reasonable probability of reaching a watercourse	No
Has this release endangered or does it have a reasonable probability of endangering public health	No
Has this release substantially damaged or will it substantially damage property or the environment	No
Is this release of a volume that is or may with reasonable probability be detrimental to fresh water	No

<b>Nature and Volume of Release</b>	
<i>Material(s) released, please answer all that apply below. Any calculations or specific justifications for the volumes provided should be attached to the follow-up C-141 submission.</i>	
Crude Oil Released (bbls) Details	Not answered.
Produced Water Released (bbls) Details	Cause: Normal Operations   Pump   Produced Water   Released: 8 BBL   Recovered: 7 BBL   Lost: 1 BBL.
Is the concentration of chloride in the produced water >10,000 mg/l	Yes
Condensate Released (bbls) Details	Not answered.
Natural Gas Vented (Mcf) Details	Not answered.
Natural Gas Flared (Mcf) Details	Not answered.
Other Released Details	Not answered.
Are there additional details for the questions above (i.e. any answer containing Other, Specify, Unknown, and/or Fire, or any negative lost amounts)	Not answered.

Sante Fe Main Office  
Phone: (505) 476-3441

General Information  
Phone: (505) 629-6116

Online Phone Directory  
<https://www.emnrd.nm.gov/ocd/contact-us>

**State of New Mexico  
Energy, Minerals and Natural Resources  
Oil Conservation Division  
1220 S. St Francis Dr.  
Santa Fe, NM 87505**

QUESTIONS, Page 2

Action 561902

**QUESTIONS (continued)**

Operator: COG OPERATING LLC 600 W Illinois Ave Midland, TX 79701	OGRID: 229137
	Action Number: 561902
	Action Type: [C-141] Remediation Closure Request C-141 (C-141-v-Closure)

**QUESTIONS**

<b>Nature and Volume of Release (continued)</b>	
Is this a gas only submission (i.e. only significant Mcf values reported)	<b>No, according to supplied volumes this does not appear to be a "gas only" report.</b>
Was this a major release as defined by Subsection A of 19.15.29.7 NMAC	<b>No</b>
Reasons why this would be considered a submission for a notification of a major release	<i>Unavailable.</i>

*With the implementation of the 19.15.27 NMAC (05/25/2021), venting and/or flaring of natural gas (i.e. gas only) are to be submitted on the C-129 form.*

**Initial Response**

*The responsible party must undertake the following actions immediately unless they could create a safety hazard that would result in injury.*

The source of the release has been stopped	<b>True</b>
The impacted area has been secured to protect human health and the environment	<b>True</b>
Released materials have been contained via the use of berms or dikes, absorbent pads, or other containment devices	<b>True</b>
All free liquids and recoverable materials have been removed and managed appropriately	<b>True</b>
If all the actions described above have not been undertaken, explain why	<i>Not answered.</i>

*Per Paragraph (4) of Subsection B of 19.15.29.8 NMAC the responsible party may commence remediation immediately after discovery of a release. If remediation has begun, please prepare and attach a narrative of actions to date in the follow-up C-141 submission. If remedial efforts have been successfully completed or if the release occurred within a lined containment area (see Subparagraph (a) of Paragraph (5) of Subsection A of 19.15.29.11 NMAC), please prepare and attach all information needed for closure evaluation in the follow-up C-141 submission.*

I hereby certify that the information given above is true and complete to the best of my knowledge and understand that pursuant to OCD rules and regulations all operators are required to report and/or file certain release notifications and perform corrective actions for releases which may endanger public health or the environment. The acceptance of a C-141 report by the OCD does not relieve the operator of liability should their operations have failed to adequately investigate and remediate contamination that pose a threat to groundwater, surface water, human health or the environment. In addition, OCD acceptance of a C-141 report does not relieve the operator of responsibility for compliance with any other federal, state, or local laws and/or regulations.

I hereby agree and sign off to the above statement	Name: Jacob Laird Title: Environmental Engineer Email: jacob.laird@conocophillips.com Date: 03/11/2026
----------------------------------------------------	-----------------------------------------------------------------------------------------------------------------

Sante Fe Main Office  
Phone: (505) 476-3441

General Information  
Phone: (505) 629-6116

Online Phone Directory  
<https://www.emnrd.nm.gov/ocd/contact-us>

**State of New Mexico**  
**Energy, Minerals and Natural Resources**  
**Oil Conservation Division**  
**1220 S. St Francis Dr.**  
**Santa Fe, NM 87505**

QUESTIONS, Page 3

Action 561902

**QUESTIONS (continued)**

Operator: COG OPERATING LLC 600 W Illinois Ave Midland, TX 79701	OGRID: 229137
	Action Number: 561902
	Action Type: [C-141] Remediation Closure Request C-141 (C-141-v-Closure)

**QUESTIONS**

**Site Characterization**

Please answer all the questions in this group (only required when seeking remediation plan approval and beyond). This information must be provided to the appropriate district office no later than 90 days after the release discovery date.

What is the shallowest depth to groundwater beneath the area affected by the release in feet below ground surface (ft bgs)	Between 100 and 500 (ft.)
What method was used to determine the depth to ground water	NM OSE iWaters Database Search
Did this release impact groundwater or surface water	No
<b>What is the minimum distance, between the closest lateral extents of the release and the following surface areas:</b>	
A continuously flowing watercourse or any other significant watercourse	Between 1 and 5 (mi.)
Any lakebed, sinkhole, or playa lake (measured from the ordinary high-water mark)	Between 1 and 5 (mi.)
An occupied permanent residence, school, hospital, institution, or church	Greater than 5 (mi.)
A spring or a private domestic fresh water well used by less than five households for domestic or stock watering purposes	Between ½ and 1 (mi.)
Any other fresh water well or spring	Between ½ and 1 (mi.)
Incorporated municipal boundaries or a defined municipal fresh water well field	Between ½ and 1 (mi.)
A wetland	Between ½ and 1 (mi.)
A subsurface mine	Greater than 5 (mi.)
An (non-karst) unstable area	Greater than 5 (mi.)
Categorize the risk of this well / site being in a karst geology	Low
A 100-year floodplain	Between ½ and 1 (mi.)
Did the release impact areas not on an exploration, development, production, or storage site	No

**Remediation Plan**

Please answer all the questions that apply or are indicated. This information must be provided to the appropriate district office no later than 90 days after the release discovery date.

Requesting a remediation plan approval with this submission	Yes
<i>Attach a comprehensive report demonstrating the lateral and vertical extents of soil contamination associated with the release have been determined, pursuant to 19.15.29.11 NMAC and 19.15.29.13 NMAC.</i>	
Have the lateral and vertical extents of contamination been fully delineated	Yes
Was this release entirely contained within a lined containment area	Yes
<i>Per Subsection B of 19.15.29.11 NMAC unless the site characterization report includes completed efforts at remediation, the report must include a proposed remediation plan in accordance with 19.15.29.12 NMAC, which includes the anticipated timelines for beginning and completing the remediation.</i>	
On what estimated date will the remediation commence	03/11/2026
On what date will (or did) the final sampling or liner inspection occur	03/11/2026
On what date will (or was) the remediation complete(d)	03/11/2026
What is the estimated surface area (in square feet) that will be remediated	6613
What is the estimated volume (in cubic yards) that will be remediated	0

*These estimated dates and measurements are recognized to be the best guess or calculation at the time of submission and may (be) change(d) over time as more remediation efforts are completed.*

*The OCD recognizes that proposed remediation measures may have to be minimally adjusted in accordance with the physical realities encountered during remediation. If the responsible party has any need to significantly deviate from the remediation plan proposed, then it should consult with the division to determine if another remediation plan submission is required.*

Sante Fe Main Office  
Phone: (505) 476-3441

General Information  
Phone: (505) 629-6116

Online Phone Directory  
<https://www.emnrd.nm.gov/ocd/contact-us>

**State of New Mexico**  
**Energy, Minerals and Natural Resources**  
**Oil Conservation Division**  
**1220 S. St Francis Dr.**  
**Santa Fe, NM 87505**

QUESTIONS, Page 4

Action 561902

**QUESTIONS (continued)**

Operator: COG OPERATING LLC 600 W Illinois Ave Midland, TX 79701	OGRID: 229137
	Action Number: 561902
	Action Type: [C-141] Remediation Closure Request C-141 (C-141-v-Closure)

**QUESTIONS**

<b>Remediation Plan (continued)</b>	
<i>Please answer all the questions that apply or are indicated. This information must be provided to the appropriate district office no later than 90 days after the release discovery date.</i>	
<b>This remediation will (or is expected to) utilize the following processes to remediate / reduce contaminants:</b>	
<i>(Select all answers below that apply.)</i>	
Is (or was) there affected material present needing to be removed	Yes
Is (or was) there a power wash of the lined containment area (to be) performed	Yes
OTHER (Non-listed remedial process)	Not answered.
<i>Per Subsection B of 19.15.29.11 NMAC unless the site characterization report includes completed efforts at remediation, the report must include a proposed remediation plan in accordance with 19.15.29.12 NMAC, which includes the anticipated timelines for beginning and completing the remediation.</i>	
I hereby certify that the information given above is true and complete to the best of my knowledge and understand that pursuant to OCD rules and regulations all operators are required to report and/or file certain release notifications and perform corrective actions for releases which may endanger public health or the environment. The acceptance of a C-141 report by the OCD does not relieve the operator of liability should their operations have failed to adequately investigate and remediate contamination that pose a threat to groundwater, surface water, human health or the environment. In addition, OCD acceptance of a C-141 report does not relieve the operator of responsibility for compliance with any other federal, state, or local laws and/or regulations.	
I hereby agree and sign off to the above statement	Name: Jacob Laird Title: Environmental Engineer Email: jacob.laird@conocophillips.com Date: 03/11/2026
<i>The OCD recognizes that proposed remediation measures may have to be minimally adjusted in accordance with the physical realities encountered during remediation. If the responsible party has any need to significantly deviate from the remediation plan proposed, then it should consult with the division to determine if another remediation plan submission is required.</i>	

Sante Fe Main Office  
Phone: (505) 476-3441

General Information  
Phone: (505) 629-6116

Online Phone Directory  
<https://www.emnrd.nm.gov/ocd/contact-us>

**State of New Mexico**  
**Energy, Minerals and Natural Resources**  
**Oil Conservation Division**  
**1220 S. St Francis Dr.**  
**Santa Fe, NM 87505**

QUESTIONS, Page 6

Action 561902

**QUESTIONS (continued)**

Operator: COG OPERATING LLC 600 W Illinois Ave Midland, TX 79701	OGRID: 229137
	Action Number: 561902
	Action Type: [C-141] Remediation Closure Request C-141 (C-141-v-Closure)

**QUESTIONS**

<b>Liner Inspection Information</b>	
Last liner inspection notification (C-141L) recorded	<b>560599</b>
Liner inspection date pursuant to Subparagraph (a) of Paragraph (5) of Subsection A of 19.15.29.11 NMAC	<b>03/11/2026</b>
Was all the impacted materials removed from the liner	<b>Yes</b>
What was the liner inspection surface area in square feet	<b>6613</b>

<b>Remediation Closure Request</b>	
<i>Only answer the questions in this group if seeking remediation closure for this release because all remediation steps have been completed.</i>	
Requesting a remediation closure approval with this submission	<b>Yes</b>
Have the lateral and vertical extents of contamination been fully delineated	<b>Yes</b>
Was this release entirely contained within a lined containment area	<b>Yes</b>
What was the total surface area (in square feet) remediated	<b>6613</b>
What was the total volume (cubic yards) remediated	<b>0</b>
Summarize any additional remediation activities not included by answers (above)	Liner integrity inspection activities were conducted following a release of produced water within a lined containment at the Site. Upon inspection, no rips, tears, holes, or damage was observed, and the liner was determined to be sufficient. The release was contained laterally by the lined containment and the liner was performing as designed.

*The responsible party must attach information demonstrating they have complied with all applicable closure requirements and any conditions or directives of the OCD. This demonstration should be in the form of a comprehensive report (in .pdf format) including a scaled site map, sampling diagrams, relevant field notes, photographs of any excavation prior to backfilling, laboratory data including chain of custody documents of final sampling, and a narrative of the remedial activities. Refer to 19.15.29.12 NMAC.*

I hereby certify that the information given above is true and complete to the best of my knowledge and understand that pursuant to OCD rules and regulations all operators are required to report and/or file certain release notifications and perform corrective actions for releases which may endanger public health or the environment. The acceptance of a C-141 report by the OCD does not relieve the operator of liability should their operations have failed to adequately investigate and remediate contamination that pose a threat to groundwater, surface water, human health or the environment. In addition, OCD acceptance of a C-141 report does not relieve the operator of responsibility for compliance with any other federal, state, or local laws and/or regulations. The responsible party acknowledges they must substantially restore, reclaim, and re-vegetate the impacted surface area to the conditions that existed prior to the release or their final land use in accordance with 19.15.29.13 NMAC including notification to the OCD when reclamation and re-vegetation are complete.

I hereby agree and sign off to the above statement	Name: Jacob Laird Title: Environmental Engineer Email: jacob.laird@conocophillips.com Date: 03/11/2026
----------------------------------------------------	-----------------------------------------------------------------------------------------------------------------

Sante Fe Main Office  
Phone: (505) 476-3441

General Information  
Phone: (505) 629-6116

Online Phone Directory  
<https://www.emnrd.nm.gov/ocd/contact-us>

**State of New Mexico**  
**Energy, Minerals and Natural Resources**  
**Oil Conservation Division**  
**1220 S. St Francis Dr.**  
**Santa Fe, NM 87505**

CONDITIONS

Action 561902

**CONDITIONS**

Operator: COG OPERATING LLC 600 W Illinois Ave Midland, TX 79701	OGRID: 229137
	Action Number: 561902
	Action Type: [C-141] Remediation Closure Request C-141 (C-141-v-Closure)

**CONDITIONS**

Created By	Condition	Condition Date
rhamlet	We have received your Remediation Closure Report for Incident #nAPP2601350798 Pitchblende 19-30 CTB, thank you. This Remediation Closure Report is approved.	3/11/2026