

2135 S. Loop 250 W.  
Midland, Texas 79703  
United States  
ghd.com

Our ref.: 12686214-NMOCD-1

February 25, 2026

New Mexico Oil Conservation Division  
506 W. Texas Avenue  
Artesia, New Mexico 88210

Closure Report  
Marathon Oil Permian LLC  
Hermes Fee 23 28 30 WXY 005H  
Unit Letter O, Section 30, T23S, R28E  
GPS: 32.27006, -104.12268  
Eddy County, New Mexico

## 1. Introduction

GHD Services Inc. (GHD), on behalf of Marathon Oil Permian LLC (MRO), has prepared this *Closure Report* to document Site assessment activities at Hermes Fee 23 28 30 WXY 005H (Site). The purpose of the assessment was to determine the presence or absence of impacts to soil following a release of produced water within a lined containment at the Site. Based on field observations, MRO is submitting this *Closure Report*, describing Site assessment activities that have occurred and requesting closure for Incident Number nAPP2528135467.

## 2. Site Description and Release Summary

The Site is in Unit O, Section 30, Township 23 South, Range 28 East, in Eddy County, New Mexico (32.27006° N, 104.12268° W) and is associated with oil and gas exploration and production operations on private lands. On September 25, 2025, approximately 12 barrels (bbls) of produced water were released into the lined secondary containment due to the corrosion of an injection flow line. A vacuum truck was dispatched to the Site to recover free-standing fluids; 11 of the 12 bbls were recovered from within the lined containment. One (1) bbl of fluid was not recovered due to residual coating of the containment and equipment. The release was reported to the New Mexico Oil Conservation Division (NMOCD) on October 8, 2025, and was subsequently assigned Incident Number nAPP2528135467.

## 3. Site Characterization and Closure Criteria

The Site was characterized to assess applicability of Table I, Closure Criteria for Soils Impacted by a Release, of Title 19, Chapter 15, Part 29 (NMAC 19.15.29) of the New Mexico Administrative Code (NMAC). Results from the characterization desktop review are summarized below and a Site Map is presented on **Figure 1**.

According to the soil survey provided by the United States Department of Agriculture National Resources Conservation Services, the soils located within the Site consists of Pima silt loam, Reagan loam, and Karro loam. The Site is within a high potential karst area.

Depth to groundwater at the Site is greater than 55 feet below ground surface (ft bgs) based on the nearest groundwater well data. Groundwater was determined utilizing the New Mexico Office of the State Engineers (NMOSE) database for registered water wells. The nearest permitted groundwater well with depth to groundwater data is NMOSE POD1 C-04916 located approximately 0.35 miles southwest of the Site. The well was completed to a depth of 120 ft bgs on December 13, 2024, and had a static water level of 80 ft bgs after completion. A copy of the referenced well record is included in **Attachment A**.

The Site is not within 300 feet of a significant watercourse, the nearest is a canal that is 0.14 miles north of the Site. The Site is greater than 200 feet from a lakebed, sinkhole, or playa lake, with the nearest sinkhole approximately 0.23 miles east of the Site. The Site is greater than 300 feet from an occupied residence, school, hospital, institution, or church; with a private domestic well for one household located approximately 0.38 miles southwest of the Site. The nearest fresh water well for livestock watering purposes is located approximately 0.29 miles south of the Site. The Site is 1.53 miles away from a defined municipal freshwater field. There are no wetlands within 300 feet of the Site, the nearest is 0.14 miles north of the Site. The Site is not within a 100-year floodplain or overlying a subsurface mine, the nearest floodplain is 1.28 miles northeast and the nearest subsurface mine is greater than 5 miles away. The location of the Site is depicted on **Figure 1**. A detailed map of the Site is provided on **Figure 2**. The Site Characterization Documentation is included in **Attachment B**.

Based on the results of the Site Characterization desktop review and having the Site within a high karst area, the following NMOCD Table I Closure Criteria (Closure Criteria) apply.

Table 3.1 Closure Criteria for Soils Impacted by a Release (NMAC 19.15.29.12)

Regulatory Standard	Benzene (mg/kg)	BTEX (mg/kg)	TPH (GRO+DRO) (mg/kg)	TPH (GRO+DRO+MRO) (mg/kg)	Chloride (mg/kg)
19.15.29.12 NMAC Table I Closure Criteria for Soils Impacted by a Release.	10	50	---	100	600
Notes: --- = not defined. mg/kg = milligrams per kilogram. TPH = total petroleum hydrocarbons. GRO+DRO+MRO = Gasoline Range Organics + Diesel Range Organics + Motor Oil/Lube Range Organics. BTEX = benzene, toluene, ethylbenzene, and xylene.					

## 4. Site Assessment Activities

The liner inspection notice was provided on January 12, 2026. A liner integrity inspection was scheduled for January 16, 2026. The liner was visually inspected and no rips, tears, holes, or damage in the liner was observed. The liner was determined to be intact with no integrity issues. Photographic documentation of the liner inspection completed on January 16, 2026, is presented in **Attachment C**.

## 5. Closure Request

Based on the liner inspection and assessment activities at the Site, MRO respectfully requests that no further actions be required, and requests closure of Incident Number nAPP2528135467 be granted. Should you have any questions or require further information regarding this report, please do not hesitate to contact the undersigned.

Regards,



**Kayla Taylor**  
Senior Project Manager

+1 432 210-5443  
kayla.yaylor@ghd.com



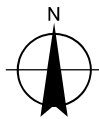
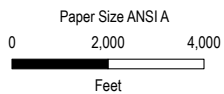
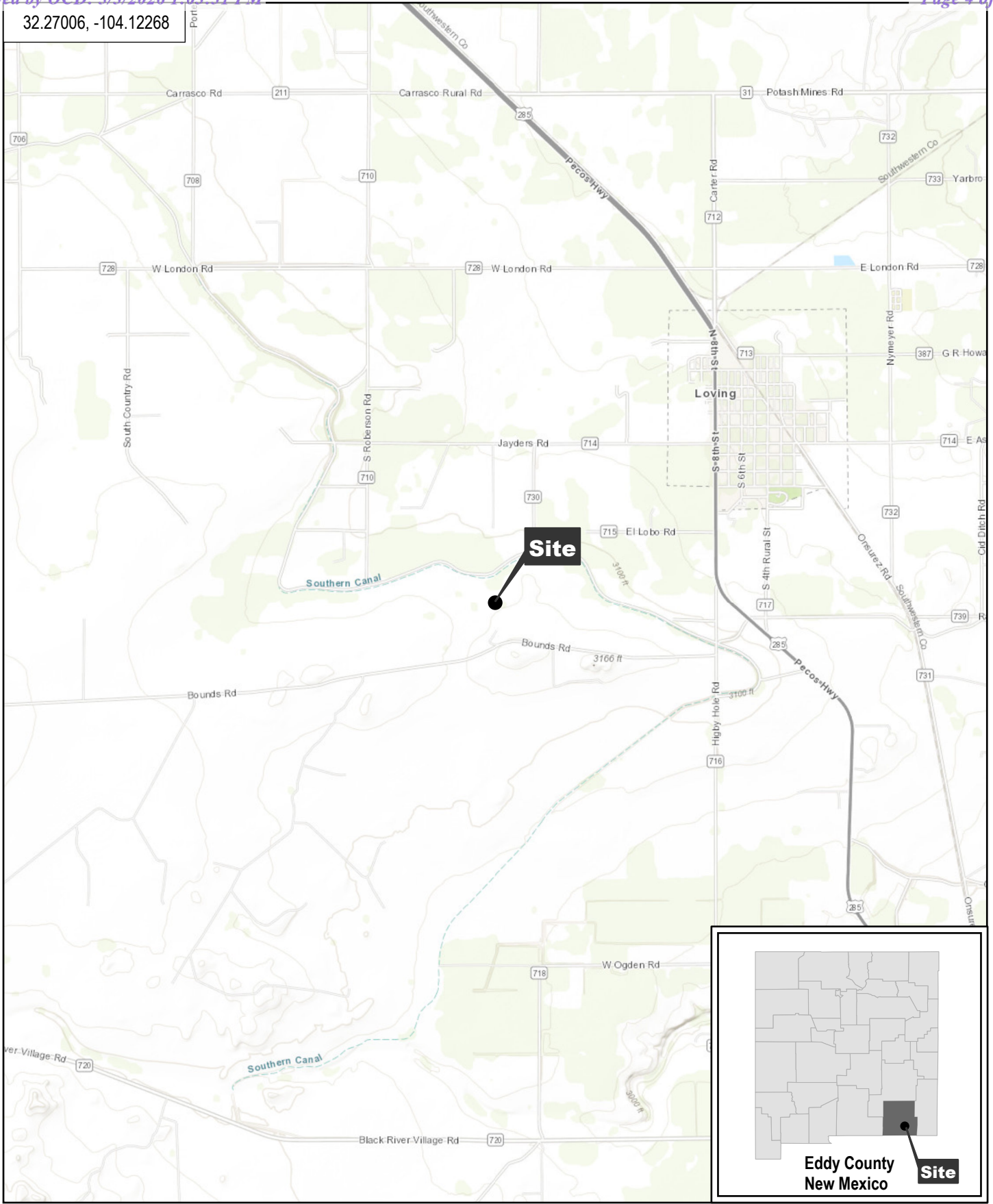
**Scott Foord**  
Project Director

+1 281 725-7477  
scott.foord@ghd.com

KT/jlf/1/S4

Encl.:      Figure 1 - Site Location Map  
              Figure 2 - Site Details Map  
              Attachment A - Referenced Well Records  
              Attachment B - Site Characterization Documentation  
              Attachment C - Photographic Documentation

32.27006, -104.12268



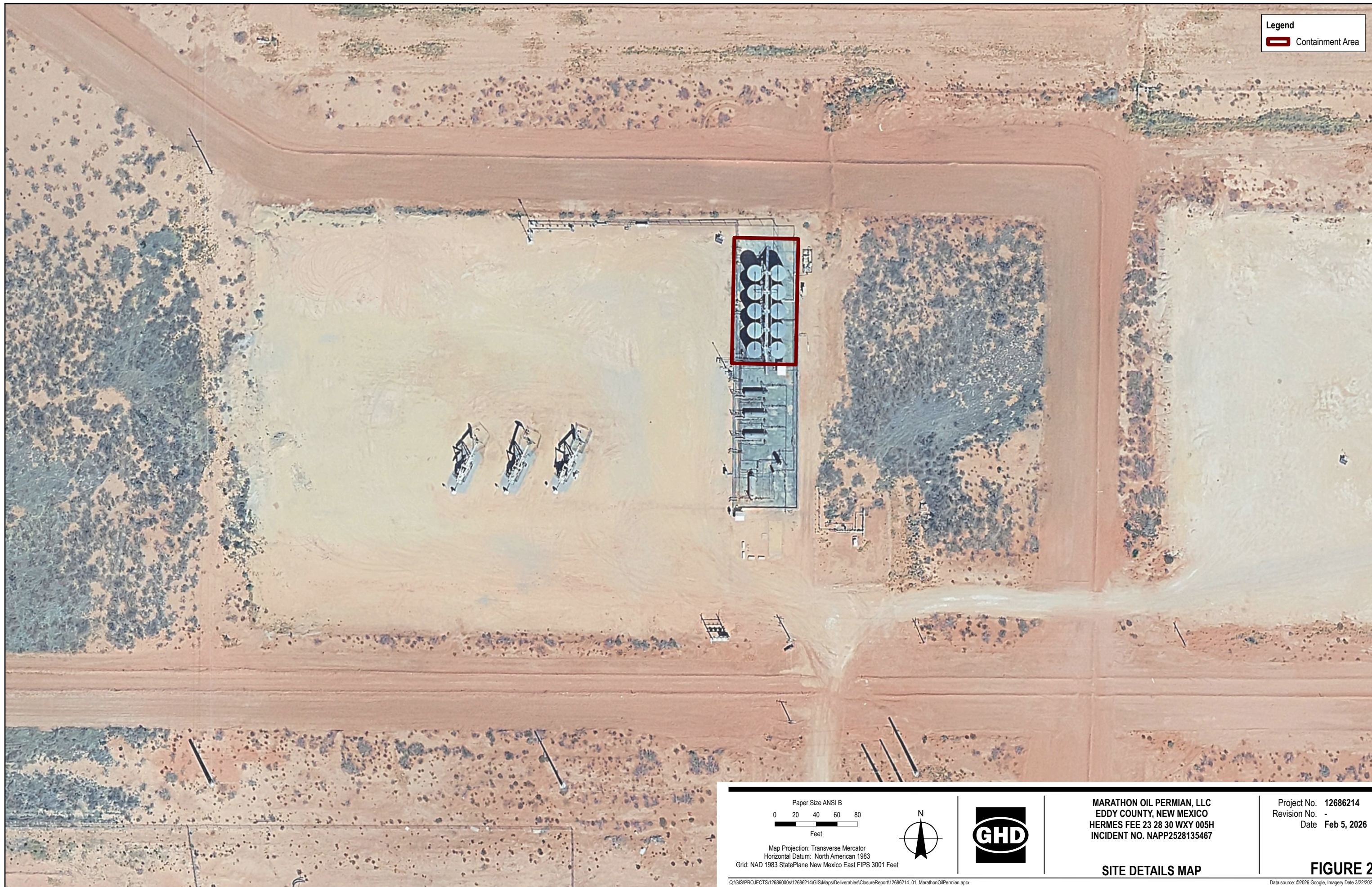
Map Projection: Transverse Mercator  
Horizontal Datum: North American 1983  
Grid: NAD 1983 StatePlane New Mexico East FIPS 3001 Feet

MARATHON OIL PERMIAN, LLC  
EDDY COUNTY, NEW MEXICO  
HERMES FEE 23 28 30 WXY 005H  
INCIDENT NO. NAPP2528135467

Project No. 12686214  
Date Feb 5, 2026

**SITE LOCATION MAP**

**FIGURE 1**



# Attachment A

## Referenced Well Records



# New Mexico Office of the State Engineer

## Water Column/Average Depth to Water

(A CLW##### in the POD suffix indicates the POD has been replaced & no longer serves a water right file.)

(R=POD has been replaced, O=orphaned, C=the file is closed)

(quarters are smallest to largest)

(meters) (In feet)

POD Number	Code	Sub basin	County	Q64	Q16	Q4	Sec	Tws	Range	X	Y	Map	Distance	Well Depth	Depth Water	Water Column
<a href="#">C 04916 POD1</a>		C	ED	SE	NE	NW	31	23S	28E	582203.4	3570285.5	●	597	120	80	40
<a href="#">C 04281 POD1</a>		C	ED	NE	SE	NW	31	23S	28E	582192.7	3570055.4	●	783	200	100	100
<a href="#">C 04037 POD1</a>		C	ED	SE	SW	NE	31	23S	28E	582575.7	3569872.8	●	836	99	60	39
<a href="#">C 04085 POD1</a>		C	ED	NW	SE	NW	31	23S	28E	582039.3	3570027.0	●	898	250	200	50
<a href="#">C 04085 POD2</a>		CUB	ED	NE	SE	NW	31	23S	28E	582082.9	3569982.7	●	905	240	100	140
<a href="#">C 01648</a>		C	ED		NE	SW	29	23S	28E	583667.0	3571184.0 *	●	1145	65	15	50
<a href="#">C 02037</a>		C	ED		NE	SW	29	23S	28E	583667.0	3571184.0 *	●	1145	260		
<a href="#">C 00108</a>		CUB	ED	NW	NW	SE	29	23S	28E	583974.0	3571285.0 *	●	1467	152	10	142
<a href="#">C 00010 CLW191724</a>	O	CUB	ED	NE	SW	NE	25	23S	27E	580926.0	3571666.0 *	●	1950	259		
<a href="#">C 00010</a>		CUB	ED	NW	NE	NE	25	23S	27E	581129.0	3572075.0 *	●	2026	250	103	147
<a href="#">C 00010 CLW191759</a>	O	CUB	ED	NW	NE	NE	25	23S	27E	581129.0	3572075.0 *	●	2026	259		
<a href="#">C 00010 ENLGD</a>		CUB	ED	NW	NE	NE	25	23S	27E	581129.0	3572075.0 *	●	2026	259		
<a href="#">C 01477</a>		CUB	ED	NW	SW	SW	19	23S	28E	581532.0	3572484.0 *	●	2085	127	10	117
<a href="#">C 00312</a>		CUB	ED	SW	SW	NW	20	23S	28E	583094.1	3573015.0	●	2353	230	70	160
<a href="#">C 04202 POD1</a>	R	C	ED	SE	SW	SW	28	23S	28E	585048.7	3570665.9	●	2423	400	60	340
<a href="#">C 02004</a>		C	ED		SW	SE	24	23S	27E	580825.0	3572378.0 *	●	2455	232	190	42
<a href="#">C 03706 POD1</a>		C	ED	SW	SE	SE	22	21S	27E	584939.0	3569812.3	●	2481	200		
<a href="#">C 03831 POD1</a>		C	ED	SE	SW	NW	33	23S	28E	584939.0	3569812.3	●	2481	300	52	248
<a href="#">C 01992</a>		C	ED	SW	SE	NW	19	23S	28E	581929.0	3573094.0 *	●	2485	232	45	187
<a href="#">C 00481</a>		C	ED	SW	NE	NW	33	23S	28E	585182.0	3570283.0 *	●	2591	225	190	35

Average Depth to Water: **85 feet**

Minimum Depth: **10 feet**

Maximum Depth: **200 feet**

**Record Count:** 20

**Basin/County Search:**

**Basin:** C

**County:** ED

**UTM Filters (in meters):**

**Easting:** 582625.15

**Northing:** 3570708.20

**Radius:** 2600

\* UTM location was derived from PLSS - see Help


The data is furnished by the NMOSE/ISC and is accepted by the recipient with the expressed understanding that the OSE/ISC make no warranties, expressed or implied, concerning the accuracy, completeness, reliability, usability, or suitability for any particular purpose of \_\_\_\_\_



# Point of Diversion Summary

quarters are 1=NW 2=NE 3=SW 4=SE  
quarters are smallest to largest

NAD83 UTM in meters

Well Tag	POD Nbr	Q64	Q16	Q4	Sec	Tws	Rng	X	Y	Map
216A7	C 04916 POD1	SE	NE	NW	31	23S	28E	582203.4	3570285.5	

\* UTM location was derived from PLSS - see Help

<b>Driller License:</b>	1839	<b>Driller Company:</b>	COFFEY DRILLING LLC		
<b>Driller Name:</b>	BOYD COFFEY				
<b>Drill Start Date:</b>	2024-12-12	<b>Drill Finish Date:</b>	2024-12-13	<b>Plug Date:</b>	
<b>Log File Date:</b>	2025-01-06	<b>PCW Rcv Date:</b>		<b>Source:</b>	Shallow
<b>Pump Type:</b>		<b>Pipe Discharge Size:</b>		<b>Estimated Yield:</b>	5
<b>Casing Size:</b>	5.00	<b>Depth Well:</b>	120	<b>Depth Water:</b>	80

## Water Bearing Stratifications:

Top	Bottom	Description
75	86	Sandstone/Gravel/Conglomerate

## Casing Perforations:

Top	Bottom
80	120

The data is furnished by the NMOSE/ISC and is accepted by the recipient with the expressed understanding that the OSE/ISC make no warranties, expressed or implied, concerning the accuracy, completeness, reliability, usability, or suitability for any particular purpose of the data.

1/22/26 12:23 PM MST

Point of Diversion Summary

©2024 New Mexico Office of the State Engineer, All Rights Reserved. | [Disclaimer](#) | [Contact Us](#) | [Help](#) | [Home](#) |

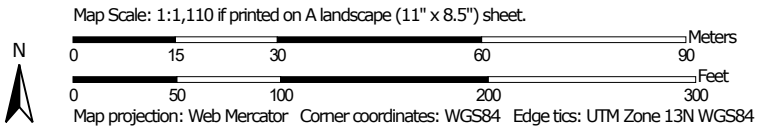
# Attachment B

## Site Characterization Documentation

Soil Map—Eddy Area, New Mexico  
(Hermes Fee 23 28 30 WXY 005H)




Soil Map may not be valid at this scale.



Soil Map—Eddy Area, New Mexico  
(Hermes Fee 23 28 30 WXY 005H)


### MAP LEGEND

**Area of Interest (AOI)**

 Area of Interest (AOI)

**Soils**

 Soil Map Unit Polygons

 Soil Map Unit Lines

 Soil Map Unit Points

**Special Point Features**



Blowout



Borrow Pit



Clay Spot



Closed Depression



Gravel Pit



Gravelly Spot



Landfill



Lava Flow



Marsh or swamp



Mine or Quarry



Miscellaneous Water



Perennial Water



Rock Outcrop



Saline Spot



Sandy Spot



Severely Eroded Spot



Sinkhole



Slide or Slip



Sodic Spot



Spoil Area



Stony Spot



Very Stony Spot



Wet Spot



Other



Special Line Features

**Water Features**



Streams and Canals

**Transportation**



Rails



Interstate Highways



US Routes



Major Roads



Local Roads

**Background**



Aerial Photography

### MAP INFORMATION

The soil surveys that comprise your AOI were mapped at 1:20,000.

**Warning:** Soil Map may not be valid at this scale.

Enlargement of maps beyond the scale of mapping can cause misunderstanding of the detail of mapping and accuracy of soil line placement. The maps do not show the small areas of contrasting soils that could have been shown at a more detailed scale.

Please rely on the bar scale on each map sheet for map measurements.

Source of Map: Natural Resources Conservation Service  
Web Soil Survey URL:  
Coordinate System: Web Mercator (EPSG:3857)

Maps from the Web Soil Survey are based on the Web Mercator projection, which preserves direction and shape but distorts distance and area. A projection that preserves area, such as the Albers equal-area conic projection, should be used if more accurate calculations of distance or area are required.

This product is generated from the USDA-NRCS certified data as of the version date(s) listed below.

Soil Survey Area: Eddy Area, New Mexico  
Survey Area Data: Version 21, Sep 9, 2025

Soil map units are labeled (as space allows) for map scales 1:50,000 or larger.

Date(s) aerial images were photographed: Nov 12, 2022—Dec 2, 2022

The orthophoto or other base map on which the soil lines were compiled and digitized probably differs from the background imagery displayed on these maps. As a result, some minor shifting of map unit boundaries may be evident.

## Map Unit Legend

Map Unit Symbol	Map Unit Name	Acres in AOI	Percent of AOI
Kr	Karro loam, 0 to 1 percent slopes	0.5	8.0%
Pe	Pima silt loam, 0 to 1 percent slopes	2.6	43.0%
Rc	Reagan loam, 0 to 1 percent slopes	2.1	34.2%
Rd	Reagan loam, 1 to 3 percent slopes	0.9	14.9%
<b>Totals for Area of Interest</b>		<b>6.2</b>	<b>100.0%</b>

## Eddy Area, New Mexico

### Pe—Pima silt loam, 0 to 1 percent slopes

#### Map Unit Setting

*National map unit symbol:* 1w58  
*Elevation:* 600 to 4,200 feet  
*Mean annual precipitation:* 8 to 25 inches  
*Mean annual air temperature:* 60 to 70 degrees F  
*Frost-free period:* 195 to 290 days  
*Farmland classification:* Prime farmland if irrigated

#### Map Unit Composition

*Pima and similar soils:* 98 percent  
*Minor components:* 2 percent  
*Estimates are based on observations, descriptions, and transects of the mapunit.*

#### Description of Pima

##### Setting

*Landform:* Alluvial fans, alluvial flats, flood plains  
*Landform position (three-dimensional):* Talf, rise  
*Down-slope shape:* Linear, convex  
*Across-slope shape:* Linear, convex  
*Parent material:* Alluvium

##### Typical profile

*H1 - 0 to 3 inches:* silt loam  
*H2 - 3 to 60 inches:* silty clay loam

##### Properties and qualities

*Slope:* 0 to 1 percent  
*Depth to restrictive feature:* More than 80 inches  
*Drainage class:* Well drained  
*Runoff class:* Medium  
*Capacity of the most limiting layer to transmit water (Ksat):* Moderately high (0.20 to 0.60 in/hr)  
*Depth to water table:* More than 80 inches  
*Frequency of flooding:* Rare  
*Frequency of ponding:* None  
*Calcium carbonate, maximum content:* 15 percent  
*Maximum salinity:* Nonsaline to slightly saline (0.0 to 4.0 mmhos/cm)  
*Sodium adsorption ratio, maximum:* 1.0  
*Available water supply, 0 to 60 inches:* High (about 11.9 inches)

##### Interpretive groups

*Land capability classification (irrigated):* 1  
*Land capability classification (nonirrigated):* 7c  
*Hydrologic Soil Group:* C  
*Ecological site:* R070BC017NM - Bottomland

Map Unit Description: Pima silt loam, 0 to 1 percent slopes---Eddy Area, New Mexico

Hermes Fee 23 28 30 WXY 005H

---

*Hydric soil rating:* No

#### **Minor Components**

##### **Reagan**

*Percent of map unit:* 1 percent

*Ecological site:* R070BC007NM - Loamy

*Hydric soil rating:* No

##### **Dev**

*Percent of map unit:* 1 percent

*Ecological site:* R070BC017NM - Bottomland

*Hydric soil rating:* No

### **Data Source Information**

Soil Survey Area: Eddy Area, New Mexico

Survey Area Data: Version 21, Sep 9, 2025

## Eddy Area, New Mexico

### Rc—Reagan loam, 0 to 1 percent slopes

#### Map Unit Setting

*National map unit symbol:* 1w5l

*Elevation:* 1,100 to 5,300 feet

*Mean annual precipitation:* 7 to 15 inches

*Mean annual air temperature:* 57 to 70 degrees F

*Frost-free period:* 200 to 240 days

*Farmland classification:* Farmland of statewide importance

#### Map Unit Composition

*Reagan and similar soils:* 97 percent

*Minor components:* 3 percent

*Estimates are based on observations, descriptions, and transects of the mapunit.*

#### Description of Reagan

##### Setting

*Landform:* Alluvial fans, fan remnants

*Landform position (three-dimensional):* Rise

*Down-slope shape:* Linear, convex

*Across-slope shape:* Linear

*Parent material:* Alluvium and/or eolian deposits

##### Typical profile

*H1 - 0 to 8 inches:* loam

*H2 - 8 to 82 inches:* loam

##### Properties and qualities

*Slope:* 0 to 1 percent

*Depth to restrictive feature:* More than 80 inches

*Drainage class:* Well drained

*Runoff class:* Low

*Capacity of the most limiting layer to transmit water*

*(Ksat):* Moderately high to high (0.60 to 2.00 in/hr)

*Depth to water table:* More than 80 inches

*Frequency of flooding:* None

*Frequency of ponding:* None

*Calcium carbonate, maximum content:* 40 percent

*Maximum salinity:* Very slightly saline to moderately saline (2.0 to 8.0 mmhos/cm)

*Sodium adsorption ratio, maximum:* 1.0

*Available water supply, 0 to 60 inches:* Moderate (about 8.2 inches)

##### Interpretive groups

*Land capability classification (irrigated):* 2e

*Land capability classification (nonirrigated):* 6c

*Hydrologic Soil Group:* B

Map Unit Description: Reagan loam, 0 to 1 percent slopes---Eddy Area, New Mexico

Hermes Fee 23 28 30 WXY 005H

---

*Ecological site:* R070BC007NM - Loamy  
*Hydric soil rating:* No

#### **Minor Components**

##### **Reeves**

*Percent of map unit:* 1 percent  
*Ecological site:* R070BC007NM - Loamy  
*Hydric soil rating:* No

##### **Upton**

*Percent of map unit:* 1 percent  
*Ecological site:* R070BC025NM - Shallow  
*Hydric soil rating:* No

##### **Reagan**

*Percent of map unit:* 1 percent  
*Ecological site:* R070BC007NM - Loamy  
*Hydric soil rating:* No

## **Data Source Information**

Soil Survey Area: Eddy Area, New Mexico  
Survey Area Data: Version 21, Sep 9, 2025

## Eddy Area, New Mexico

### Rd—Reagan loam, 1 to 3 percent slopes

#### Map Unit Setting

*National map unit symbol:* 1w5m  
*Elevation:* 1,100 to 4,400 feet  
*Mean annual precipitation:* 7 to 15 inches  
*Mean annual air temperature:* 60 to 70 degrees F  
*Frost-free period:* 200 to 240 days  
*Farmland classification:* Prime farmland if irrigated

#### Map Unit Composition

*Reagan and similar soils:* 98 percent  
*Minor components:* 2 percent  
*Estimates are based on observations, descriptions, and transects of the mapunit.*

#### Description of Reagan

##### Setting

*Landform:* Alluvial fans, fan remnants  
*Landform position (three-dimensional):* Rise  
*Down-slope shape:* Linear, convex  
*Across-slope shape:* Linear  
*Parent material:* Alluvium and/or eolian deposits

##### Typical profile

*H1 - 0 to 8 inches:* loam  
*H2 - 8 to 82 inches:* loam

##### Properties and qualities

*Slope:* 1 to 3 percent  
*Depth to restrictive feature:* More than 80 inches  
*Drainage class:* Well drained  
*Runoff class:* Low  
*Capacity of the most limiting layer to transmit water (Ksat):* Moderately high to high (0.60 to 2.00 in/hr)  
*Depth to water table:* More than 80 inches  
*Frequency of flooding:* None  
*Frequency of ponding:* None  
*Calcium carbonate, maximum content:* 40 percent  
*Maximum salinity:* Very slightly saline to moderately saline (2.0 to 8.0 mmhos/cm)  
*Sodium adsorption ratio, maximum:* 1.0  
*Available water supply, 0 to 60 inches:* Moderate (about 8.2 inches)

##### Interpretive groups

*Land capability classification (irrigated):* 2e  
*Land capability classification (nonirrigated):* 6e  
*Hydrologic Soil Group:* B

Map Unit Description: Reagan loam, 1 to 3 percent slopes---Eddy Area, New Mexico

Hermes Fee 23 28 30 WXY 005H

---

*Ecological site:* R070BC007NM - Loamy  
*Hydric soil rating:* No

#### **Minor Components**

##### **Upton**

*Percent of map unit:* 1 percent  
*Ecological site:* R070BC025NM - Shallow  
*Hydric soil rating:* No

##### **Reagan**

*Percent of map unit:* 1 percent  
*Ecological site:* R070BC007NM - Loamy  
*Hydric soil rating:* No

### **Data Source Information**

Soil Survey Area: Eddy Area, New Mexico  
Survey Area Data: Version 21, Sep 9, 2025

## Eddy Area, New Mexico

### Kr—Karro loam, 0 to 1 percent slopes

#### Map Unit Setting

*National map unit symbol:* 1w4v

*Elevation:* 2,500 to 5,300 feet

*Mean annual precipitation:* 10 to 15 inches

*Mean annual air temperature:* 57 to 64 degrees F

*Frost-free period:* 200 to 230 days

*Farmland classification:* Farmland of statewide importance

#### Map Unit Composition

*Karro and similar soils:* 99 percent

*Minor components:* 1 percent

*Estimates are based on observations, descriptions, and transects of the mapunit.*

#### Description of Karro

##### Setting

*Landform:* Alluvial fans, plains

*Landform position (three-dimensional):* Riser, rise, talf

*Down-slope shape:* Linear, convex

*Across-slope shape:* Linear

*Parent material:* Mixed alluvium

##### Typical profile

*H1 - 0 to 10 inches:* loam

*H2 - 10 to 90 inches:* clay loam

##### Properties and qualities

*Slope:* 0 to 1 percent

*Depth to restrictive feature:* More than 80 inches

*Drainage class:* Well drained

*Runoff class:* Medium

*Capacity of the most limiting layer to transmit water*

*(Ksat):* Moderately high (0.20 to 0.60 in/hr)

*Depth to water table:* More than 80 inches

*Frequency of flooding:* None

*Frequency of ponding:* None

*Calcium carbonate, maximum content:* 60 percent

*Maximum salinity:* Nonsaline to slightly saline (0.0 to 4.0 mmhos/cm)

*Sodium adsorption ratio, maximum:* 1.0

*Available water supply, 0 to 60 inches:* High (about 10.5 inches)

##### Interpretive groups

*Land capability classification (irrigated):* 2s

*Land capability classification (nonirrigated):* 6s

*Hydrologic Soil Group:* C

*Ecological site:* R070BC030NM - Limy

Map Unit Description: Karro loam, 0 to 1 percent slopes---Eddy Area, New Mexico

Hermes Fee 23 28 30 WXY 005H

---

*Hydric soil rating:* No

### **Minor Components**

#### **Reeves**

*Percent of map unit:* 1 percent

*Ecological site:* R070BC007NM - Loamy

*Hydric soil rating:* No

## **Data Source Information**

Soil Survey Area: Eddy Area, New Mexico

Survey Area Data: Version 21, Sep 9, 2025

# Hermes Fee 23 28 30 WXY 005H

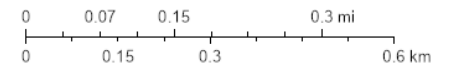


1/22/2026, 1:15:15 PM

Karst Occurrence Potential

- High
- Medium

1:9,028

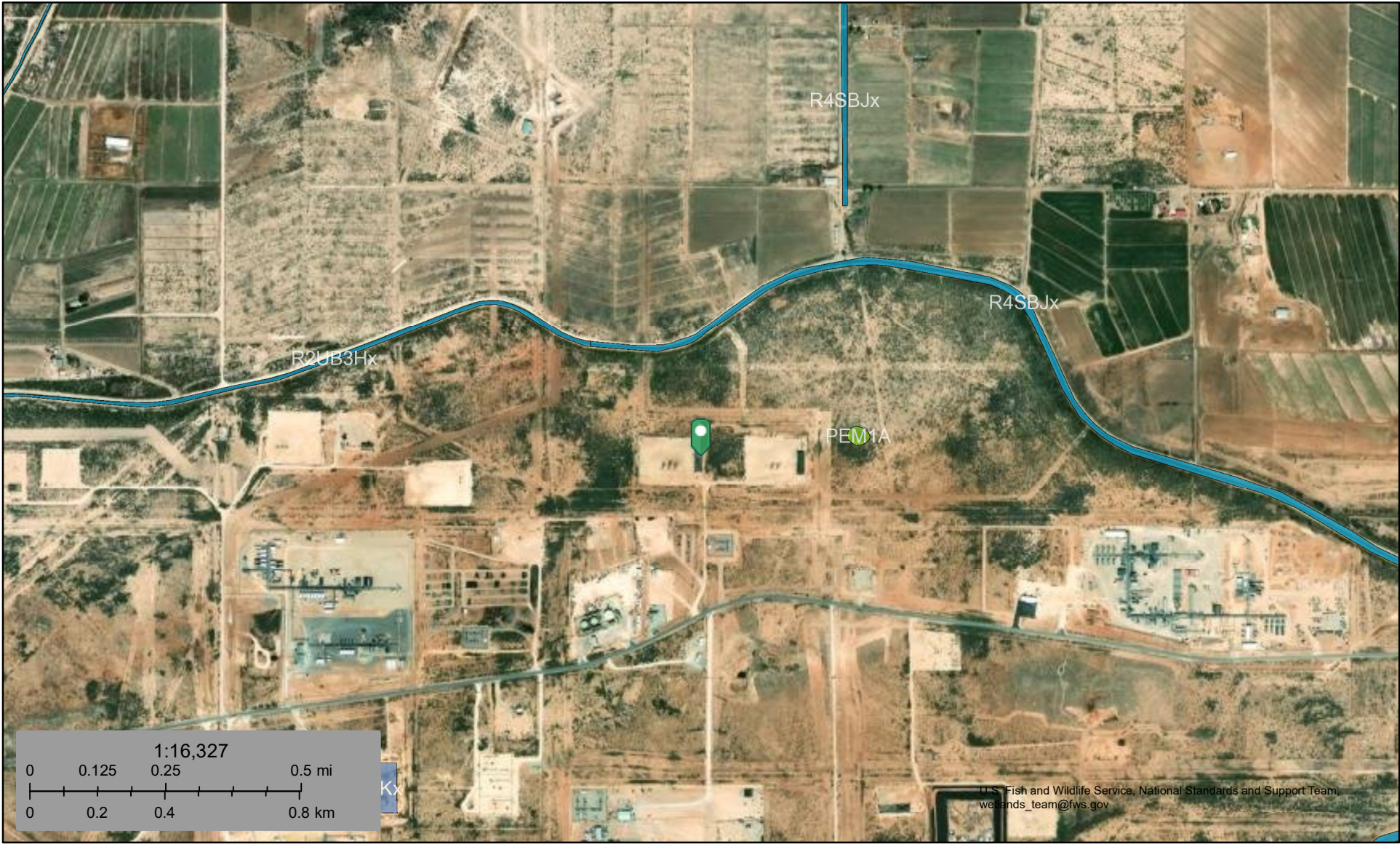


BLM, OCD, New Mexico Tech, Vantor, Esri, HERE, Garmin, IPC



U.S. Fish and Wildlife Service  
National Wetlands Inventory









Hermes Fee 23 28 30 WXY 005H



U.S. Fish and Wildlife Service, National Standards and Support Team, wetlands\_team@fws.gov

January 22, 2026

**Wetlands**

- |  |   |  |
|--|---|--|
|  Estuarine and Marine Deepwater |  Freshwater Emergent Wetland       |  Lake     |
|  Estuarine and Marine Wetland   |  Freshwater Forested/Shrub Wetland |  Other    |
|  |  Freshwater Pond                   |  Riverine |

This map is for general reference only. The US Fish and Wildlife Service is not responsible for the accuracy or currentness of the base data shown on this map. All wetlands related data should be used in accordance with the layer metadata found on the Wetlands Mapper web site.

# National Flood Hazard Layer FIRMette



104°7'40"W 32°16'27"N



## Legend

SEE FIS REPORT FOR DETAILED LEGEND AND INDEX MAP FOR FIRM PANEL LAYOUT

SPECIAL FLOOD HAZARD AREAS		Without Base Flood Elevation (BFE) <i>Zone A, V, A99</i>
		With BFE or Depth <i>Zone AE, AO, AH, VE, AR</i>
		Regulatory Floodway

OTHER AREAS OF FLOOD HAZARD		0.2% Annual Chance Flood Hazard, Areas of 1% annual chance flood with average depth less than one foot or with drainage areas of less than one square mile <i>Zone X</i>
		Future Conditions 1% Annual Chance Flood Hazard <i>Zone X</i>
		Area with Reduced Flood Risk due to Levee. See Notes. <i>Zone X</i>
		Area with Flood Risk due to Levee <i>Zone D</i>

OTHER AREAS		NO SCREEN Area of Minimal Flood Hazard <i>Zone X</i>
		Effective LOMRs

GENERAL STRUCTURES		Channel, Culvert, or Storm Sewer
		Levee, Dike, or Floodwall

OTHER FEATURES		20.2 Cross Sections with 1% Annual Chance Water Surface Elevation
		17.5 Coastal Transect
		Base Flood Elevation Line (BFE)
		Limit of Study
		Jurisdiction Boundary
		Profile Baseline
OTHER FEATURES		Hydrographic Feature

MAP PANELS		Digital Data Available
		No Digital Data Available
		Unmapped



The pin displayed on the map is an approximate point selected by the user and does not represent an authoritative property location.

This map complies with FEMA's standards for the use of digital flood maps if it is not void as described below. The basemap shown complies with FEMA's basemap accuracy standards

The flood hazard information is derived directly from the authoritative NFHL web services provided by FEMA. This map was exported on 1/22/2026 at 7:19 PM and does not reflect changes or amendments subsequent to this date and time. The NFHL and effective information may change or become superseded by new data over time.

This map image is void if the one or more of the following map elements do not appear: basemap imagery, flood zone labels, legend, scale bar, map creation date, community identifiers, FIRM panel number, and FIRM effective date. Map images for unmapped and unmodernized areas cannot be used for regulatory purposes.

Released to Imaging: 3/12/2026 4:13:19 PM

1:6,000

Basemap Imagery Source: USGS National Map 2023

# **Attachment C**

## **Photographic Documentation**

ConocoPhillips Company  
CoP - Hermes Fee 23 28 30 WXY 005H  
Incident No. naPP2528135467  
Eddy County, New Mexico

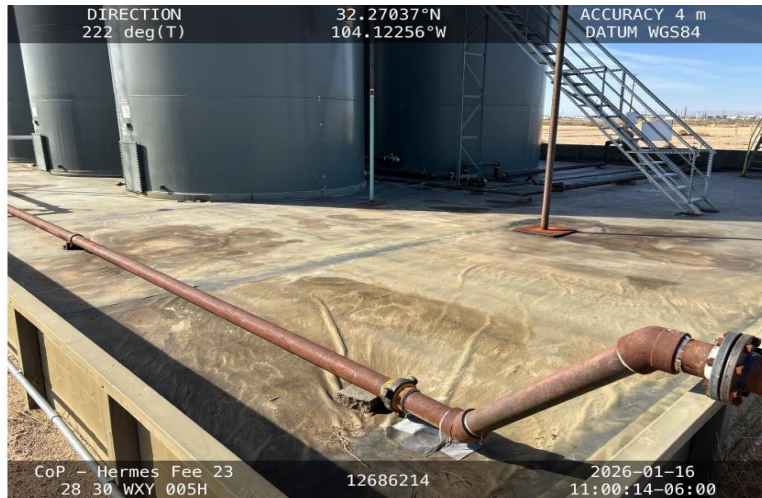


Photo 1 View of northeast corner of containment.



Photo 2 View of west side secondary containment towards south.

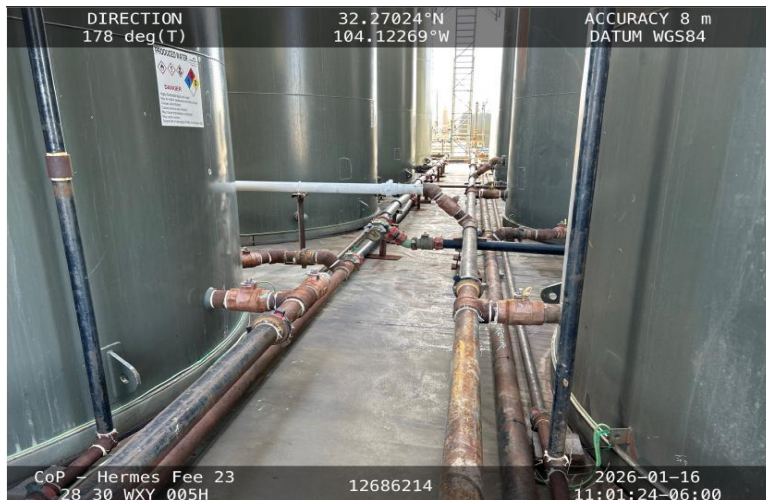


Photo 3 View of central portion of containment.



Photo 4 View of east side secondary containment towards north.

ConocoPhillips Company  
CoP - Hermes Fee 23 28 30 WXY 005H  
Incident No. naPP2528135467  
Eddy County, New Mexico



Photo 5      View of east side secondary containment towards south.



Photo 6      View of east side secondary containment towards south.



Photo 7      View of west side secondary containment towards north.



Photo 8      View of west side secondary containment towards north.

Sante Fe Main Office  
Phone: (505) 476-3441

General Information  
Phone: (505) 629-6116

Online Phone Directory  
<https://www.emnrd.nm.gov/ocd/contact-us>

**State of New Mexico**  
**Energy, Minerals and Natural Resources**  
**Oil Conservation Division**  
**1220 S. St Francis Dr.**  
**Santa Fe, NM 87505**

QUESTIONS

Action 559470

**QUESTIONS**

Operator: MARATHON OIL PERMIAN LLC 600 W Illinois Ave Midland, TX 79701	OGRID: 372098
	Action Number: 559470
	Action Type: [C-141] Remediation Closure Request C-141 (C-141-v-Closure)

**QUESTIONS**

<b>Prerequisites</b>	
Incident ID (n#)	nAPP2528135467
Incident Name	NAPP2528135467 HERMES FEE 23 28 30 WXY 005H @ O-30-23S-28E
Incident Type	Produced Water Release
Incident Status	Remediation Closure Report Received

<b>Location of Release Source</b>	
<i>Please answer all the questions in this group.</i>	
Site Name	HERMES FEE 23 28 30 WXY 005H
Date Release Discovered	09/25/2025
Surface Owner	Private

<b>Incident Details</b>	
<i>Please answer all the questions in this group.</i>	
Incident Type	Produced Water Release
Did this release result in a fire or is the result of a fire	No
Did this release result in any injuries	No
Has this release reached or does it have a reasonable probability of reaching a watercourse	No
Has this release endangered or does it have a reasonable probability of endangering public health	No
Has this release substantially damaged or will it substantially damage property or the environment	No
Is this release of a volume that is or may with reasonable probability be detrimental to fresh water	No

<b>Nature and Volume of Release</b>	
<i>Material(s) released, please answer all that apply below. Any calculations or specific justifications for the volumes provided should be attached to the follow-up C-141 submission.</i>	
Crude Oil Released (bbls) Details	Not answered.
Produced Water Released (bbls) Details	Cause: Corrosion   Flow Line - Injection   Produced Water   Released: 12 BBL   Recovered: 11 BBL   Lost: 1 BBL.
Is the concentration of chloride in the produced water >10,000 mg/l	Yes
Condensate Released (bbls) Details	Not answered.
Natural Gas Vented (Mcf) Details	Not answered.
Natural Gas Flared (Mcf) Details	Not answered.
Other Released Details	Not answered.
Are there additional details for the questions above (i.e. any answer containing Other, Specify, Unknown, and/or Fire, or any negative lost amounts)	Not answered.

Sante Fe Main Office  
Phone: (505) 476-3441

General Information  
Phone: (505) 629-6116

Online Phone Directory  
<https://www.emnrd.nm.gov/ocd/contact-us>

**State of New Mexico**  
**Energy, Minerals and Natural Resources**  
**Oil Conservation Division**  
**1220 S. St Francis Dr.**  
**Santa Fe, NM 87505**

QUESTIONS, Page 2

Action 559470

**QUESTIONS (continued)**

Operator: MARATHON OIL PERMIAN LLC 600 W Illinois Ave Midland, TX 79701	OGRID: 372098
	Action Number: 559470
	Action Type: [C-141] Remediation Closure Request C-141 (C-141-v-Closure)

**QUESTIONS**

<b>Nature and Volume of Release (continued)</b>	
Is this a gas only submission (i.e. only significant Mcf values reported)	<b>No, according to supplied volumes this does not appear to be a "gas only" report.</b>
Was this a major release as defined by Subsection A of 19.15.29.7 NMAC	<b>No</b>
Reasons why this would be considered a submission for a notification of a major release	<i>Unavailable.</i>
<i>With the implementation of the 19.15.27 NMAC (05/25/2021), venting and/or flaring of natural gas (i.e. gas only) are to be submitted on the C-129 form.</i>	

**Initial Response**

*The responsible party must undertake the following actions immediately unless they could create a safety hazard that would result in injury.*

The source of the release has been stopped	<b>True</b>
The impacted area has been secured to protect human health and the environment	<b>True</b>
Released materials have been contained via the use of berms or dikes, absorbent pads, or other containment devices	<b>True</b>
All free liquids and recoverable materials have been removed and managed appropriately	<b>True</b>
If all the actions described above have not been undertaken, explain why	<i>Not answered.</i>

*Per Paragraph (4) of Subsection B of 19.15.29.8 NMAC the responsible party may commence remediation immediately after discovery of a release. If remediation has begun, please prepare and attach a narrative of actions to date in the follow-up C-141 submission. If remedial efforts have been successfully completed or if the release occurred within a lined containment area (see Subparagraph (a) of Paragraph (5) of Subsection A of 19.15.29.11 NMAC), please prepare and attach all information needed for closure evaluation in the follow-up C-141 submission.*

I hereby certify that the information given above is true and complete to the best of my knowledge and understand that pursuant to OCD rules and regulations all operators are required to report and/or file certain release notifications and perform corrective actions for releases which may endanger public health or the environment. The acceptance of a C-141 report by the OCD does not relieve the operator of liability should their operations have failed to adequately investigate and remediate contamination that pose a threat to groundwater, surface water, human health or the environment. In addition, OCD acceptance of a C-141 report does not relieve the operator of responsibility for compliance with any other federal, state, or local laws and/or regulations.

I hereby agree and sign off to the above statement	Name: Jacqui Harris Title: Sr Environment Engineer Email: jacqui.harris@conocophillips.com Date: 03/03/2026
--	--

Sante Fe Main Office  
Phone: (505) 476-3441

General Information  
Phone: (505) 629-6116

Online Phone Directory  
<https://www.emnrd.nm.gov/ocd/contact-us>

**State of New Mexico**  
**Energy, Minerals and Natural Resources**  
**Oil Conservation Division**  
**1220 S. St Francis Dr.**  
**Santa Fe, NM 87505**

QUESTIONS, Page 3

Action 559470

**QUESTIONS (continued)**

Operator: MARATHON OIL PERMIAN LLC 600 W Illinois Ave Midland, TX 79701	OGRID: 372098
	Action Number: 559470
	Action Type: [C-141] Remediation Closure Request C-141 (C-141-v-Closure)

**QUESTIONS**

**Site Characterization**  
*Please answer all the questions in this group (only required when seeking remediation plan approval and beyond). This information must be provided to the appropriate district office no later than 90 days after the release discovery date.*

What is the shallowest depth to groundwater beneath the area affected by the release in feet below ground surface (ft bgs)	Between 75 and 100 (ft.)
What method was used to determine the depth to ground water	NM OSE iWaters Database Search
Did this release impact groundwater or surface water	No
<b>What is the minimum distance, between the closest lateral extents of the release and the following surface areas:</b>	
A continuously flowing watercourse or any other significant watercourse	Between 500 and 1000 (ft.)
Any lakebed, sinkhole, or playa lake (measured from the ordinary high-water mark)	Between 500 and 1000 (ft.)
An occupied permanent residence, school, hospital, institution, or church	Between 1/2 and 1 (mi.)
A spring or a private domestic fresh water well used by less than five households for domestic or stock watering purposes	Between 500 and 1000 (ft.)
Any other fresh water well or spring	Between 1/2 and 1 (mi.)
Incorporated municipal boundaries or a defined municipal fresh water well field	Between 1 and 5 (mi.)
A wetland	Between 500 and 1000 (ft.)
A subsurface mine	Greater than 5 (mi.)
An (non-karst) unstable area	Greater than 5 (mi.)
Categorize the risk of this well / site being in a karst geology	High
A 100-year floodplain	Between 1 and 5 (mi.)
Did the release impact areas not on an exploration, development, production, or storage site	No

**Remediation Plan**  
*Please answer all the questions that apply or are indicated. This information must be provided to the appropriate district office no later than 90 days after the release discovery date.*

Requesting a remediation plan approval with this submission	Yes
<i>Attach a comprehensive report demonstrating the lateral and vertical extents of soil contamination associated with the release have been determined, pursuant to 19.15.29.11 NMAC and 19.15.29.13 NMAC.</i>	
Have the lateral and vertical extents of contamination been fully delineated	Yes
Was this release entirely contained within a lined containment area	Yes
<i>Per Subsection B of 19.15.29.11 NMAC unless the site characterization report includes completed efforts at remediation, the report must include a proposed remediation plan in accordance with 19.15.29.12 NMAC, which includes the anticipated timelines for beginning and completing the remediation.</i>	
On what estimated date will the remediation commence	10/08/2025
On what date will (or did) the final sampling or liner inspection occur	01/16/2026
On what date will (or was) the remediation complete(d)	01/15/2026
What is the estimated surface area (in square feet) that will be remediated	2625
What is the estimated volume (in cubic yards) that will be remediated	0

*These estimated dates and measurements are recognized to be the best guess or calculation at the time of submission and may (be) change(d) over time as more remediation efforts are completed. The OCD recognizes that proposed remediation measures may have to be minimally adjusted in accordance with the physical realities encountered during remediation. If the responsible party has any need to significantly deviate from the remediation plan proposed, then it should consult with the division to determine if another remediation plan submission is required.*

Sante Fe Main Office  
Phone: (505) 476-3441

General Information  
Phone: (505) 629-6116

Online Phone Directory  
<https://www.emnrd.nm.gov/ocd/contact-us>

**State of New Mexico**  
**Energy, Minerals and Natural Resources**  
**Oil Conservation Division**  
**1220 S. St Francis Dr.**  
**Santa Fe, NM 87505**

QUESTIONS, Page 4

Action 559470

**QUESTIONS (continued)**

Operator: MARATHON OIL PERMIAN LLC 600 W Illinois Ave Midland, TX 79701	OGRID: 372098
	Action Number: 559470
	Action Type: [C-141] Remediation Closure Request C-141 (C-141-v-Closure)

**QUESTIONS**

<b>Remediation Plan (continued)</b>	
<i>Please answer all the questions that apply or are indicated. This information must be provided to the appropriate district office no later than 90 days after the release discovery date.</i>	
<b>This remediation will (or is expected to) utilize the following processes to remediate / reduce contaminants:</b>	
<i>(Select all answers below that apply.)</i>	
Is (or was) there affected material present needing to be removed	Yes
Is (or was) there a power wash of the lined containment area (to be) performed	Yes
OTHER (Non-listed remedial process)	Not answered.
<i>Per Subsection B of 19.15.29.11 NMAC unless the site characterization report includes completed efforts at remediation, the report must include a proposed remediation plan in accordance with 19.15.29.12 NMAC, which includes the anticipated timelines for beginning and completing the remediation.</i>	
I hereby certify that the information given above is true and complete to the best of my knowledge and understand that pursuant to OCD rules and regulations all operators are required to report and/or file certain release notifications and perform corrective actions for releases which may endanger public health or the environment. The acceptance of a C-141 report by the OCD does not relieve the operator of liability should their operations have failed to adequately investigate and remediate contamination that pose a threat to groundwater, surface water, human health or the environment. In addition, OCD acceptance of a C-141 report does not relieve the operator of responsibility for compliance with any other federal, state, or local laws and/or regulations.	
I hereby agree and sign off to the above statement	Name: Jacqui Harris Title: Sr Environment Engineer Email: jacqui.harris@conocophillips.com Date: 03/03/2026
<i>The OCD recognizes that proposed remediation measures may have to be minimally adjusted in accordance with the physical realities encountered during remediation. If the responsible party has any need to significantly deviate from the remediation plan proposed, then it should consult with the division to determine if another remediation plan submission is required.</i>	

Sante Fe Main Office  
Phone: (505) 476-3441

General Information  
Phone: (505) 629-6116

Online Phone Directory  
<https://www.emnrd.nm.gov/ocd/contact-us>

**State of New Mexico**  
**Energy, Minerals and Natural Resources**  
**Oil Conservation Division**  
**1220 S. St Francis Dr.**  
**Santa Fe, NM 87505**

QUESTIONS, Page 6

Action 559470

**QUESTIONS (continued)**

Operator: MARATHON OIL PERMIAN LLC 600 W Illinois Ave Midland, TX 79701	OGRID: 372098
	Action Number: 559470
	Action Type: [C-141] Remediation Closure Request C-141 (C-141-v-Closure)

**QUESTIONS**

<b>Liner Inspection Information</b>	
Last liner inspection notification (C-141L) recorded	<b>542004</b>
Liner inspection date pursuant to Subparagraph (a) of Paragraph (5) of Subsection A of 19.15.29.11 NMAC	<b>01/16/2026</b>
Was all the impacted materials removed from the liner	<b>Yes</b>
What was the liner inspection surface area in square feet	<b>5625</b>

<b>Remediation Closure Request</b>	
<i>Only answer the questions in this group if seeking remediation closure for this release because all remediation steps have been completed.</i>	
Requesting a remediation closure approval with this submission	<b>Yes</b>
Have the lateral and vertical extents of contamination been fully delineated	<b>Yes</b>
Was this release entirely contained within a lined containment area	<b>Yes</b>
What was the total surface area (in square feet) remediated	<b>5625</b>
What was the total volume (cubic yards) remediated	<b>0</b>
Summarize any additional remediation activities not included by answers (above)	<b>Liner Inspected. - Re-submission with report edits per NMOCD request</b>

*The responsible party must attach information demonstrating they have complied with all applicable closure requirements and any conditions or directives of the OCD. This demonstration should be in the form of a comprehensive report (in .pdf format) including a scaled site map, sampling diagrams, relevant field notes, photographs of any excavation prior to backfilling, laboratory data including chain of custody documents of final sampling, and a narrative of the remedial activities. Refer to 19.15.29.12 NMAC.*

I hereby certify that the information given above is true and complete to the best of my knowledge and understand that pursuant to OCD rules and regulations all operators are required to report and/or file certain release notifications and perform corrective actions for releases which may endanger public health or the environment. The acceptance of a C-141 report by the OCD does not relieve the operator of liability should their operations have failed to adequately investigate and remediate contamination that pose a threat to groundwater, surface water, human health or the environment. In addition, OCD acceptance of a C-141 report does not relieve the operator of responsibility for compliance with any other federal, state, or local laws and/or regulations. The responsible party acknowledges they must substantially restore, reclaim, and re-vegetate the impacted surface area to the conditions that existed prior to the release or their final land use in accordance with 19.15.29.13 NMAC including notification to the OCD when reclamation and re-vegetation are complete.

I hereby agree and sign off to the above statement	Name: Jacqui Harris Title: Sr Environment Engineer Email: jacqui.harris@conocophillips.com Date: 03/03/2026
--	--

Sante Fe Main Office  
Phone: (505) 476-3441

General Information  
Phone: (505) 629-6116

Online Phone Directory  
<https://www.emnrd.nm.gov/ocd/contact-us>

**State of New Mexico**  
**Energy, Minerals and Natural Resources**  
**Oil Conservation Division**  
**1220 S. St Francis Dr.**  
**Santa Fe, NM 87505**

CONDITIONS

Action 559470

**CONDITIONS**

Operator: MARATHON OIL PERMIAN LLC 600 W Illinois Ave Midland, TX 79701	OGRID: 372098
	Action Number: 559470
	Action Type: [C-141] Remediation Closure Request C-141 (C-141-v-Closure)

**CONDITIONS**

Created By	Condition	Condition Date
scwells	Liner report approved.	3/12/2026