



## **Liner Inspection and Closure Request**

**Devon Energy Production Company, LP**

**Fully Loaded 12 CTB 2**

**Eddy County, New Mexico**

**Unit Letter "F", Section 12, Township 24 South, Range 29 East**

**Latitude 32.234324 North, Longitude 103.938978 West**

**NMOCD Incident # NAPP2535865109**

---

Prepared For:

Devon Energy Production Company, LP  
333 West Sheridan Ave.  
Oklahoma City, OK 73102

Prepared By:

Hungry Horse, LLC  
4024 Plains Hwy  
Lovington, NM 88260  
Office: (575) 393-3386

**March 2026**

A handwritten signature in black ink, appearing to read "Daniel Dominguez", is written over a horizontal line.

Daniel Dominguez  
Environmental Director  
ddominguez@hungry-horse.com

## Table Of Contents

Site Information	1
Site Classification	1
Liner Inspection	2
Closure Request	2
Limitations	2
Distribution	3

### Figures

- Figure 1 – Topographic Map
- Figure 2 – OSE POD Locations Map
- Figure 3 – USGS Well Locations Map
- Figure 4 – Liner Inspection Map

### Attachments

- Attachment I – Karst and Wetland Maps
- Attachment II – NMOCD Correspondence
- Attachment III – Site Photographs
- Attachment IV – Depth to Groundwater
- Attachment V – Liner Inspection Report



## HUNGRY HORSE, LLC

---

The following *Liner Inspection and Closure Request* serves as a condensed update on field activities undertaken at the afore referenced Site.

### Site Information:

The site is located in Unit Letter F (SE/NW), Section 12, Township 24 South, Range 29 East, approximately eight miles East of Malaga, in Eddy County, New Mexico. The site is located on Bureau of Land Management land. Topographic Map, OSE POD Locations Map, and USGS Well Locations Map are included as Figure 1, Figure 2, and Figure 3, respectively.

The release occurred within a polyethylene lined metal containment; Latitude 32.234324 North, Longitude 103.938978 West. The Initial NMOCD Form C-141 indicated that on December 24, 2025 approximately 11 bbls of produced water was released to lined containment due to a pinhole leak on dump line. A crew was dispatched to the site with a vacuum truck and 11 bbls of fluid were recovered from lined containment. Previously submitted pages of the NMOCD Form C-141 are available on the NMOCD Imaging System.

### Site Classification:

A search of the New Mexico Office of the State Engineer (NMOSE) and United States Geological Survey (USGS) groundwater databases was completed in an effort to determine the horizontal distance to known water sources within a half mile radius of the Release Site. Approximate depth to groundwater was determined using maintained and published water well data. Karst mapping indicates the site is located in a low Karst designated area. Karst and Wetland Maps are provided as Attachment I. Depth to groundwater information is provided as Attachment IV and the results are depicted on Figures 2 & 3.

No water wells were located within a half mile of the release area. However, due to the release being contained within a lined containment area and all fluid was recovered, a liner inspection was scheduled. Utilizing this information, the NMOCD Closure Criteria for the Site is depicted in the table below.

Depth to Groundwater	Constituent	Method	Limit
<50'	Chloride	EPA 300.0 or SM4500 CLB	600 mg/kg
	TPH (GRO + DRO + MRO)	EPA SW-846 Method 8015M Ext	100 mg/kg
	GRO + DRO	EPA SW-846 Method 8015M Ext	N/A
	BTEX	EPA SW-846 Methods 8021B or 8260B	50 mg/kg
	Benzene	EPA SW-846 Methods 8021B or 8260B	10 mg/kg



---

**Liner Inspection:**

The release of 11 bbls of produced water to lined containment occurred on December 24, 2025, with 11 bbls of fluid recovered via vacuum truck. The released did not leave the lined containment, hit pad, or go offsite.

On March 19, 2026, Devon notified NMOCD that a liner inspection would be conducted on March 24, 2026. Correspondence is provided as Attachment II.

On March 24, 2026, Hungry Horse personnel arrived on location to inspect the liner. The liner and metal containment were thoroughly inspected from edge to edge, as well as around the tanks and process equipment installed on the liner itself. Site Photographs are provided as Attachment III. The liner was found to be in place, intact, with no visible breaks or tears. There was no evidence of the release escaping the metal containment area. A completed Liner Inspection Form is attached as Attachment V.

**Closure Request:**

The Liner Inspection and correspondence with NMOCD were conducted in accordance with applicable NMOCD Regulations.

Based upon the reported volume recovered from the release and a thorough liner inspection, with photographs demonstrating an intact, untorn, unbroken liner with no evidence of release escaping containment, Devon Energy Production Company, LP respectfully request closure of the Fully Loaded 12 CTB 2 location, incident NAPP2535865109.

**Limitations:**

Hungry Horse, LLC, has prepared this *Liner Inspection and Closure Request* to the best of its ability. No other warranty, expressed or implied, is made or intended. Hungry Horse has examined and relied upon documents referenced in the report and on oral statements made by certain individuals. Hungry Horse has not conducted an independent examination of the facts contained in referenced materials and statements. Hungry Horse has presumed the genuineness of these documents and statements and that the information provided therein is true and accurate. Hungry Horse notes that the facts and conditions referenced in this report may change over time, and the conclusions and recommendations set forth herein are applicable only to the facts and conditions as described at the time of this report.



---

**Distribution:**

**Devon Energy Production Company, LP**

333 West Sheridan Ave.  
Oklahoma City, OK 73102

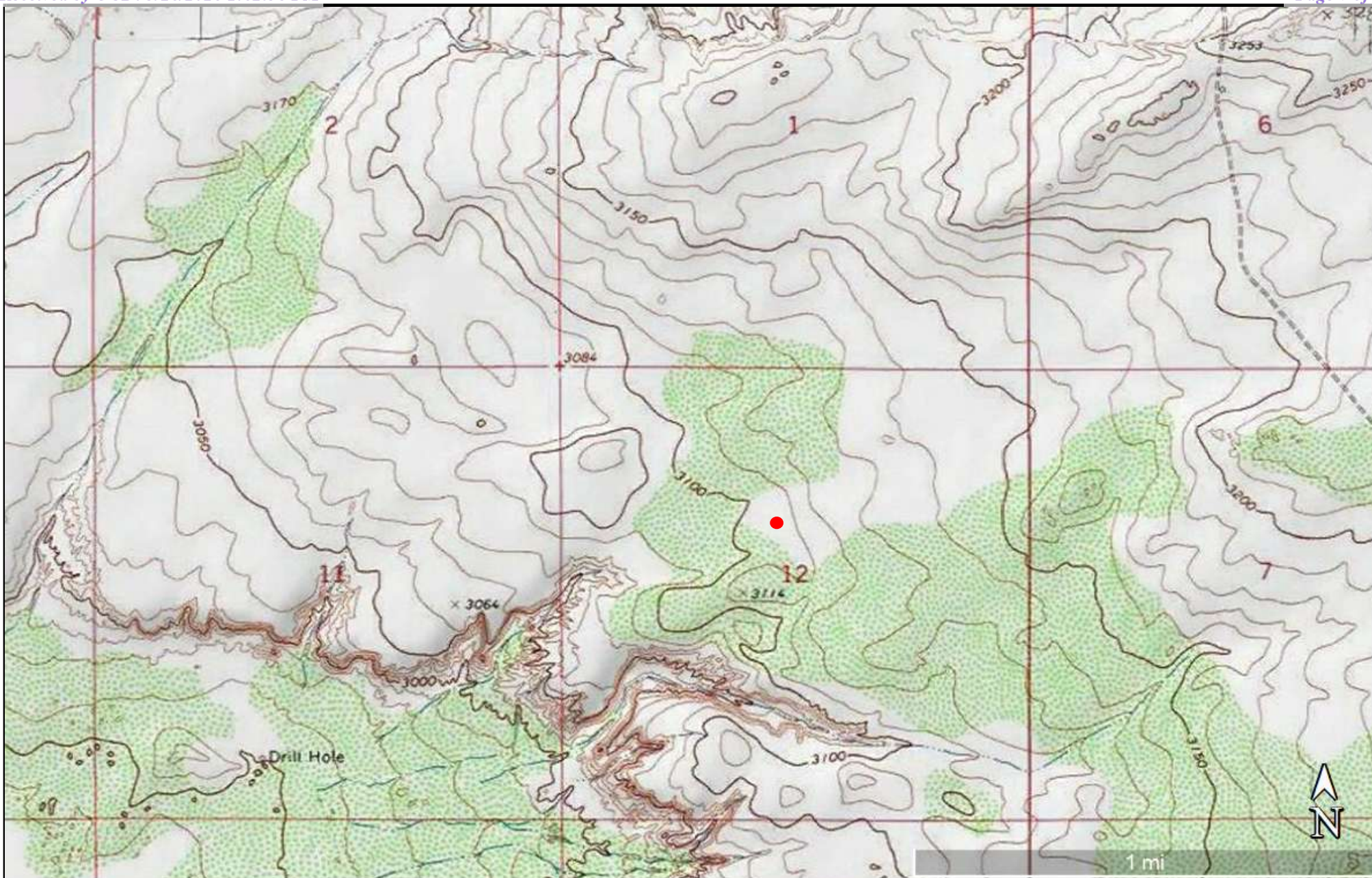
**New Mexico Energy, Minerals and Natural Resources Department**

Oil Conservation Division, District 2  
811 S. First St.  
Artesia, NM 88210

**New Mexico Bureau of Land Management**

620 E. Greene St.  
Carlsbad, NM 88220

## Figures



**Figure 1**

Topographic Map  
Devon Energy Production Company, LP  
Fully Loaded 12 CTB 2  
GPS: 32.234324, -103.938978  
Eddy County

**Legend:**

- Fully Loaded 12 CTB 2 Location

Drafted: dd  
Checked: jh  
Date: 2/5/26





1:18,056  
0 0.13 0.25 0.5 mi  
0 0.2 0.4 0.8 km  
Source: Esri, Maxar, Earthstar Geographics, and the GIS User Community, USGS, Esri, HERE, Garmin, IPC

**Figure 2**  
OSE POD Locations Map  
Devon Energy Production Company, LP  
Fully Loaded 12 CTB 2  
GPS: 32.234324, -103.938978  
Eddy County

**Legend:**  
● Fully Loaded 12 CTB 2 Location

Drafted: dd  
Checked: jh  
Date: 2/5/26





**Figure 3**

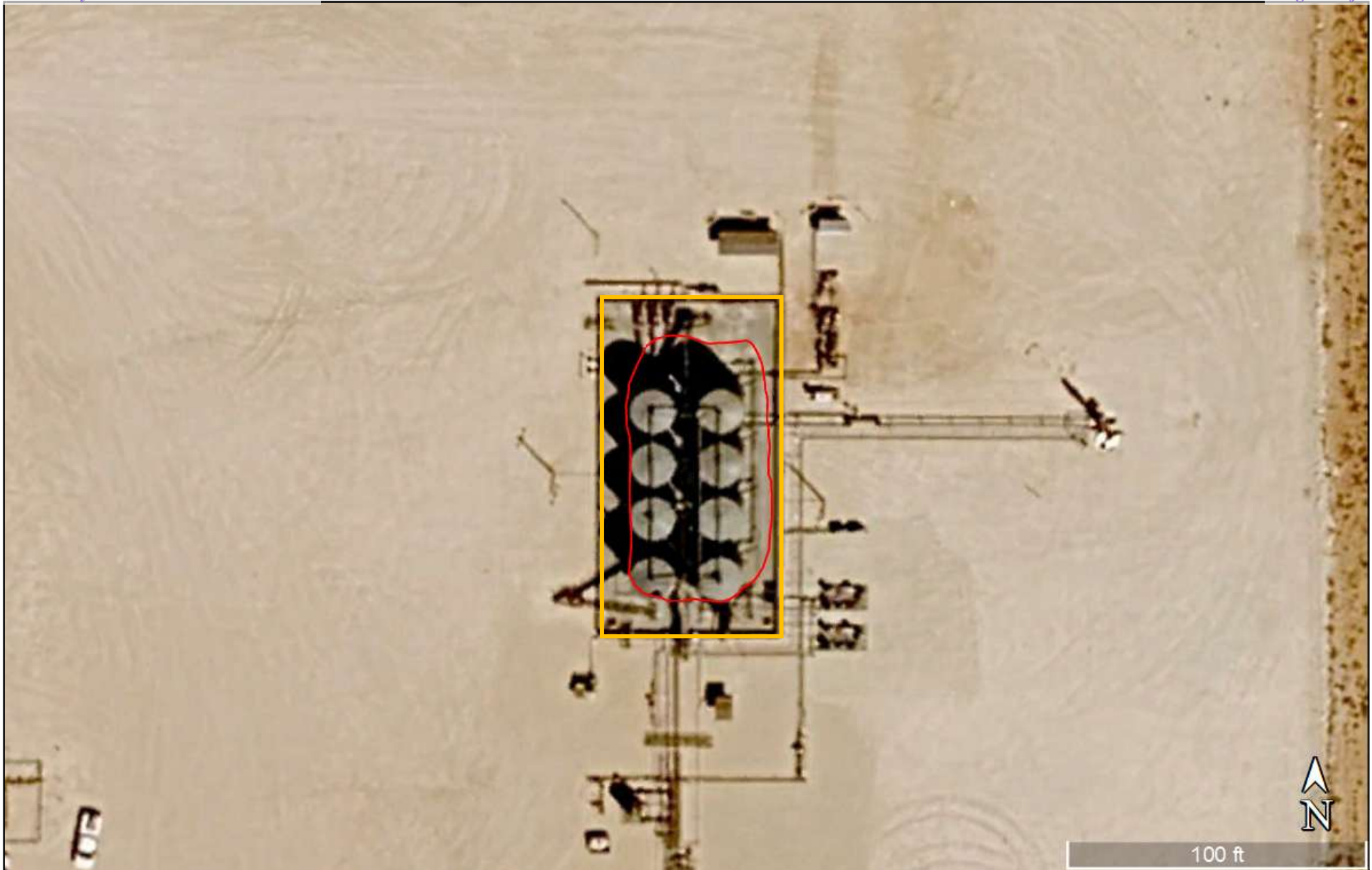
USGS Well Locations Map  
 Devon Energy Production Company, LP  
 Fully Loaded 12 CTB 2  
 GPS: 32.234324, -103.938978  
 Eddy County

**Legend:**

- Fully Loaded 12 CTB 2 Location





Drafted: dd  
 Checked: jh  
 Date: 2/5/26



**Figure 4**

Delineation Sample Map  
Devon Energy Production Company, LP  
Fully Loaded 12 CTB 2  
GPS: 32.234324, -103.938978  
Eddy County

**Legend:**

-  Release Area within Lined Containment
-  Lined Containment Walls

Drafted: dd  
Checked: jh  
Date: 3/23/26



# **Attachment I**

## **Karst and Wetland Maps**

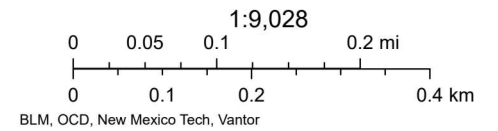
### Fully Loaded 12 CTB 2



2/26/2026, 10:10:02 AM

Karst Occurrence Potential

- Medium
- Low













# Fully Loaded 12 CTB 2



February 26, 2026

### Wetlands

-  Estuarine and Marine Deepwater
-  Freshwater Emergent Wetland
-  Lake
-  Estuarine and Marine Wetland
-  Freshwater Forested/Shrub Wetland
-  Other
-  Freshwater Pond
-  Riverine

This map is for general reference only. The US Fish and Wildlife Service is not responsible for the accuracy or currentness of the base data shown on this map. All wetlands related data should be used in accordance with the layer metadata found on the Wetlands Mapper web site.

## **Attachment II**

### **NMOCD Correspondence**

Sante Fe Main Office  
Phone: (505) 476-3441

General Information  
Phone: (505) 629-6116

Online Phone Directory  
<https://www.emnrd.nm.gov/ocd/contact-us>

**State of New Mexico**  
**Energy, Minerals and Natural Resources**  
**Oil Conservation Division**  
**1220 S. St Francis Dr.**  
**Santa Fe, NM 87505**

QUESTIONS

Action 564645

**QUESTIONS**

Operator: DEVON ENERGY PRODUCTION COMPANY, LP 333 West Sheridan Ave. Oklahoma City, OK 73102	OGRID: 6137
	Action Number: 564645
	Action Type: [NOTIFY] Notification Of Liner Inspection (C-141L)

**QUESTIONS**

<b>Prerequisites</b>	
Incident ID (n#)	nAPP2535865109
Incident Name	NAPP2535865109 FULLY LOADED 12 CTB 2 @ FAPP2123646949
Incident Type	Produced Water Release
Incident Status	Initial C-141 Approved
Incident Facility	[fAPP2123646949] FULLY LOADED 12 CTB 2

<b>Location of Release Source</b>	
Site Name	FULLY LOADED 12 CTB 2
Date Release Discovered	12/24/2025
Surface Owner	Federal

<b>Liner Inspection Event Information</b>	
<i>Please answer all the questions in this group.</i>	
What is the liner inspection surface area in square feet	4,000
Have all the impacted materials been removed from the liner	Yes
Liner inspection date pursuant to Subparagraph (a) of Paragraph (5) of Subsection A of 19.15.29.11 NMAC	03/24/2026
Time liner inspection will commence	08:00 AM
Please provide any information necessary for observers to liner inspection	Jerry Heidelberg 575-390-3639
Please provide any information necessary for navigation to liner inspection site	32.234324, -103.938978

Sante Fe Main Office  
Phone: (505) 476-3441

General Information  
Phone: (505) 629-6116

Online Phone Directory  
<https://www.emnrd.nm.gov/ocd/contact-us>

**State of New Mexico**  
**Energy, Minerals and Natural Resources**  
**Oil Conservation Division**  
**1220 S. St Francis Dr.**  
**Santa Fe, NM 87505**

CONDITIONS

Action 564645

**CONDITIONS**

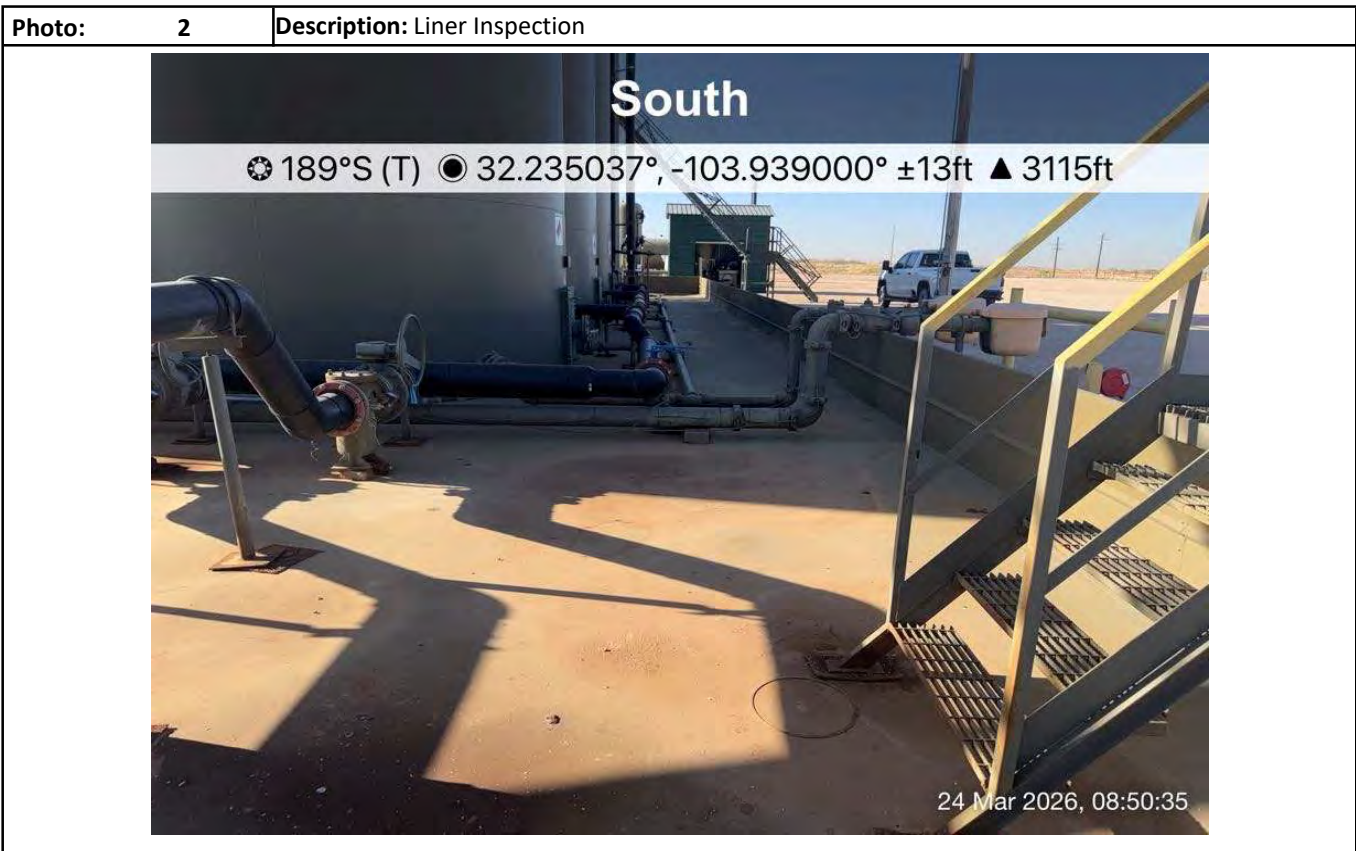
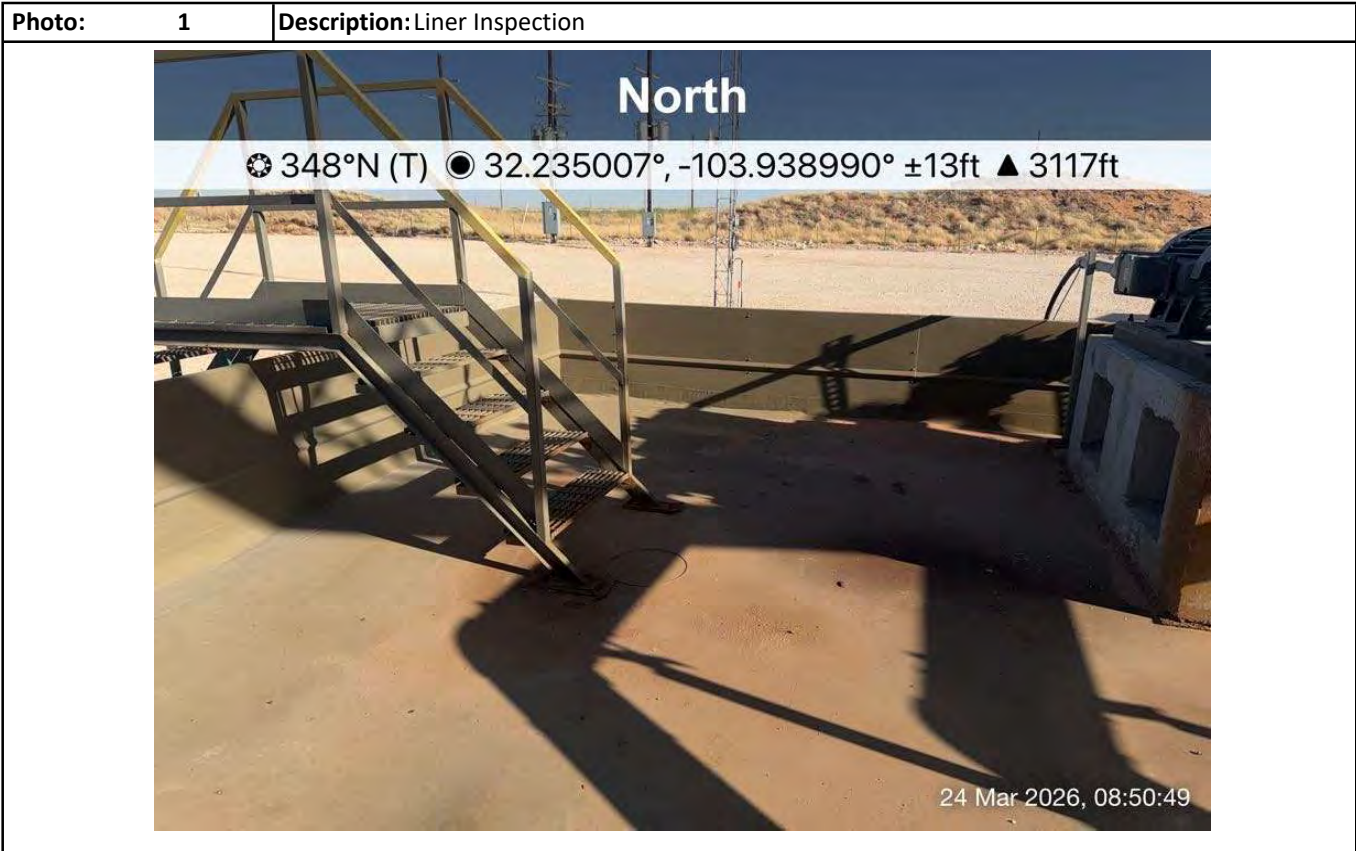
Operator: DEVON ENERGY PRODUCTION COMPANY, LP 333 West Sheridan Ave. Oklahoma City, OK 73102	OGRID: 6137
	Action Number: 564645
	Action Type: [NOTIFY] Notification Of Liner Inspection (C-141L)

**CONDITIONS**

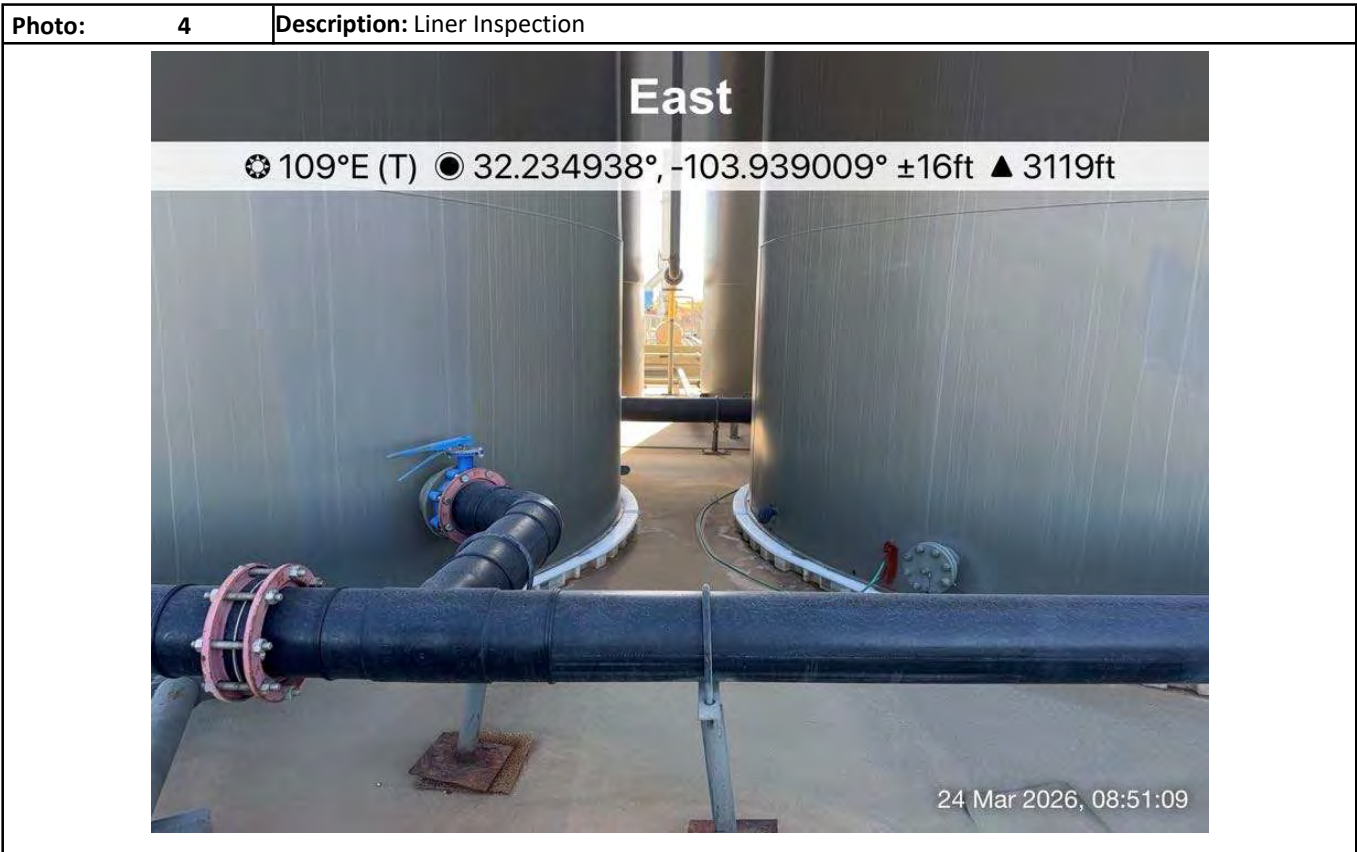
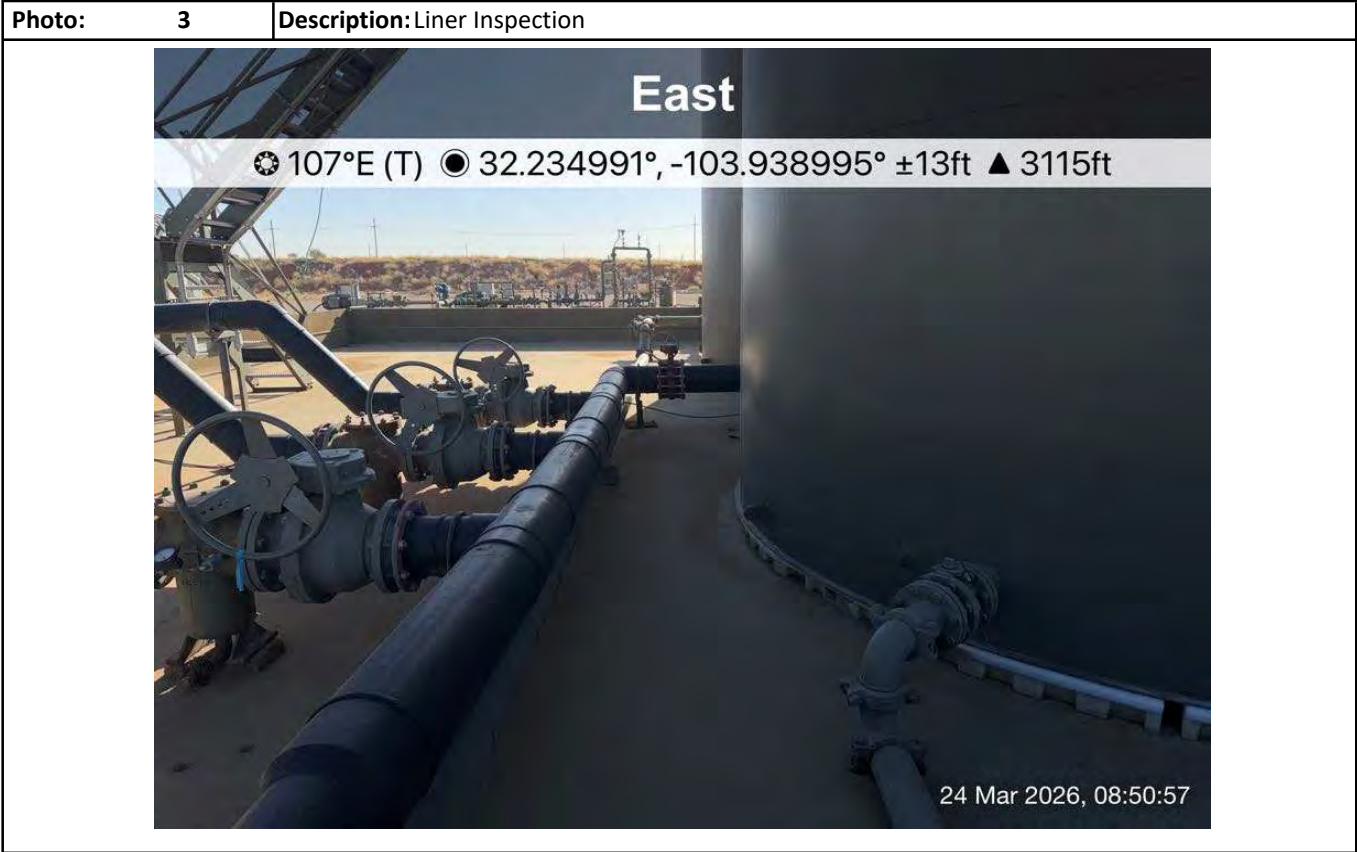
Created By	Condition	Condition Date
jralej	Failure to notify the OCD of liner inspections including any changes in date/time per the requirements of 19.15.29.11.A(5)(a)(ii) NMAC, may result in the inspection not being accepted.	3/19/2026

## **Attachment III Site Photographs**

### Photographs



### Photographs

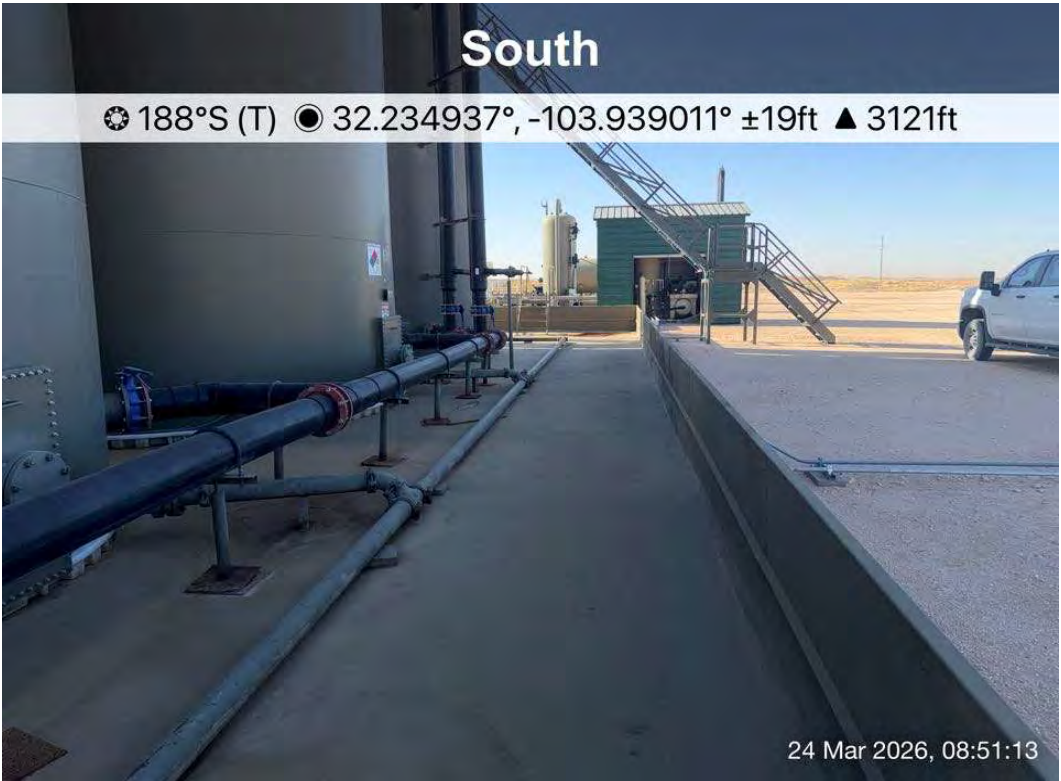


### Photographs

<b>Photo:</b>	<b>5</b>	<b>Description:</b> Liner Inspection
---------------	----------	--------------------------------------

**South**

📍 188°S (T) 📍 32.234937°, -103.939011° ±19ft ▲ 3121ft




24 Mar 2026, 08:51:13

<b>Photo:</b>	<b>6</b>	<b>Description:</b> Liner Inspection
---------------	----------	--------------------------------------

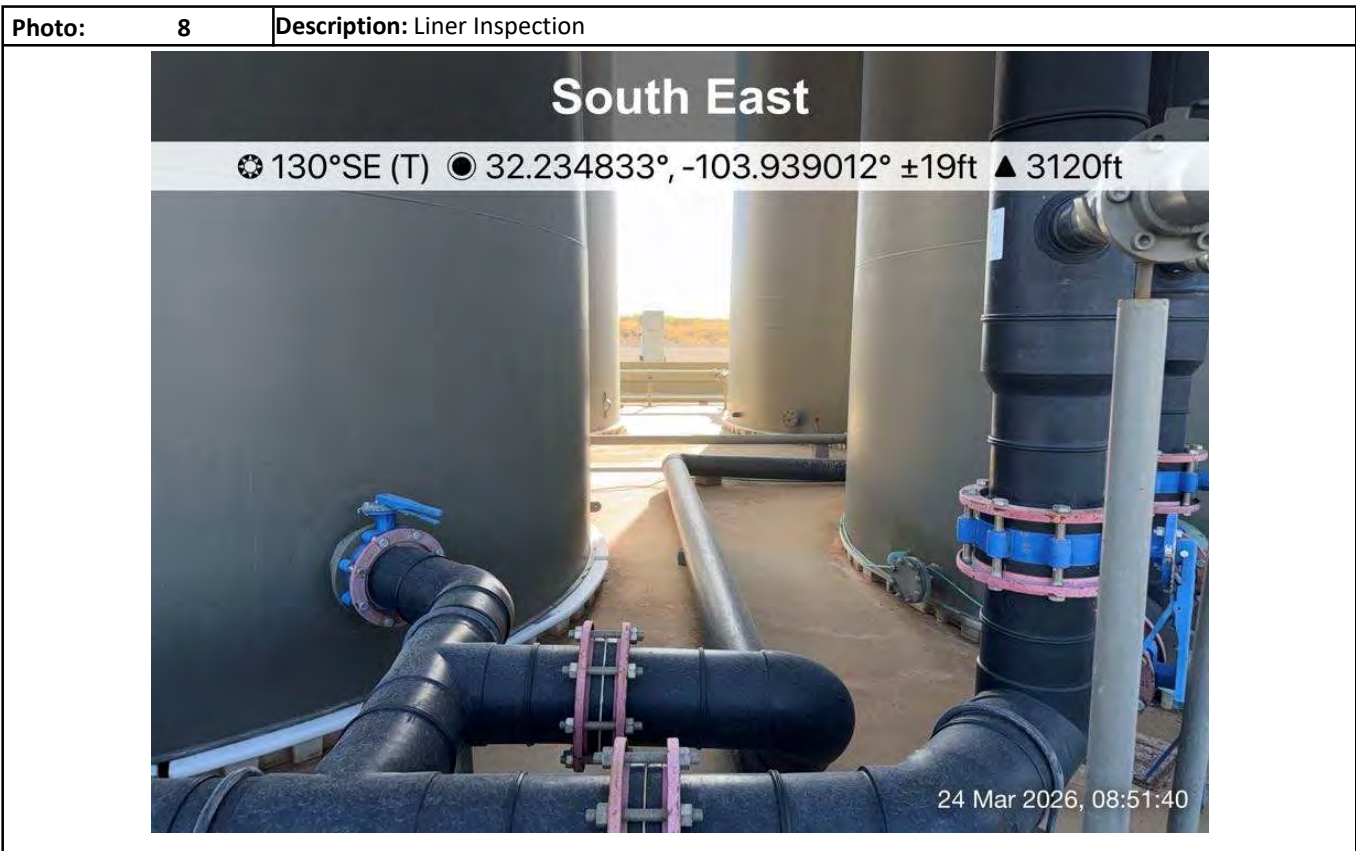
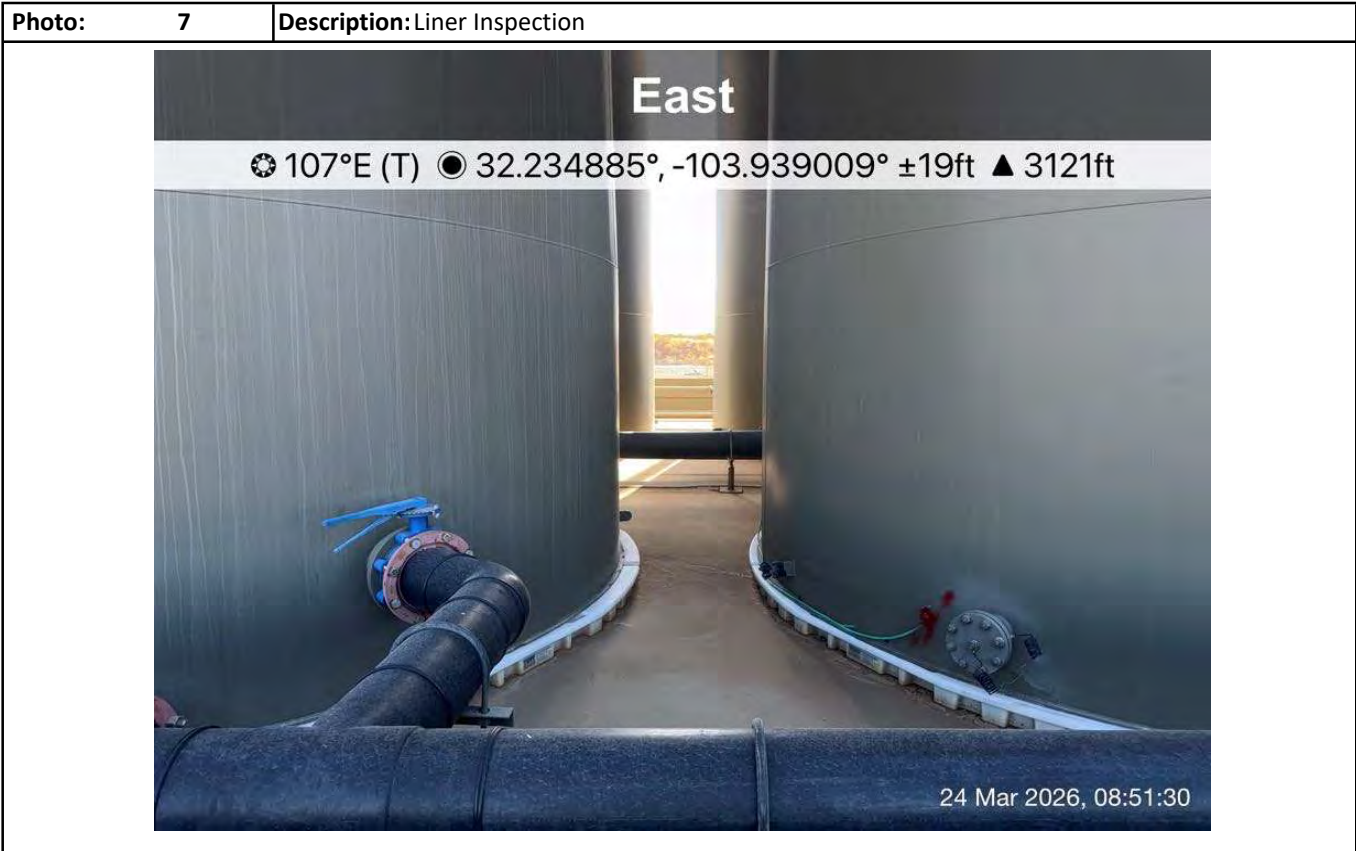
**North East**

📍 27°NE (T) 📍 32.234923°, -103.939014° ±19ft ▲ 3126ft

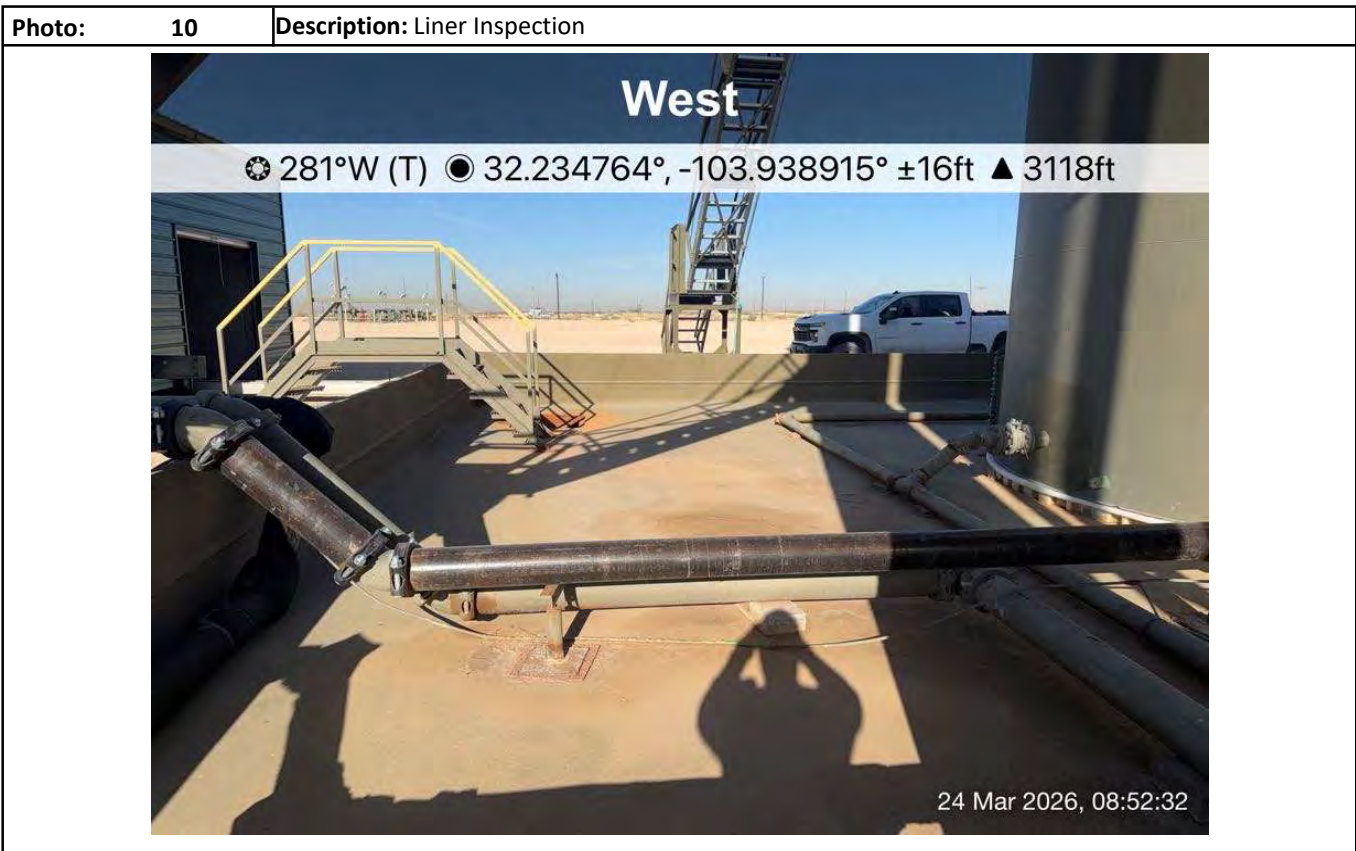
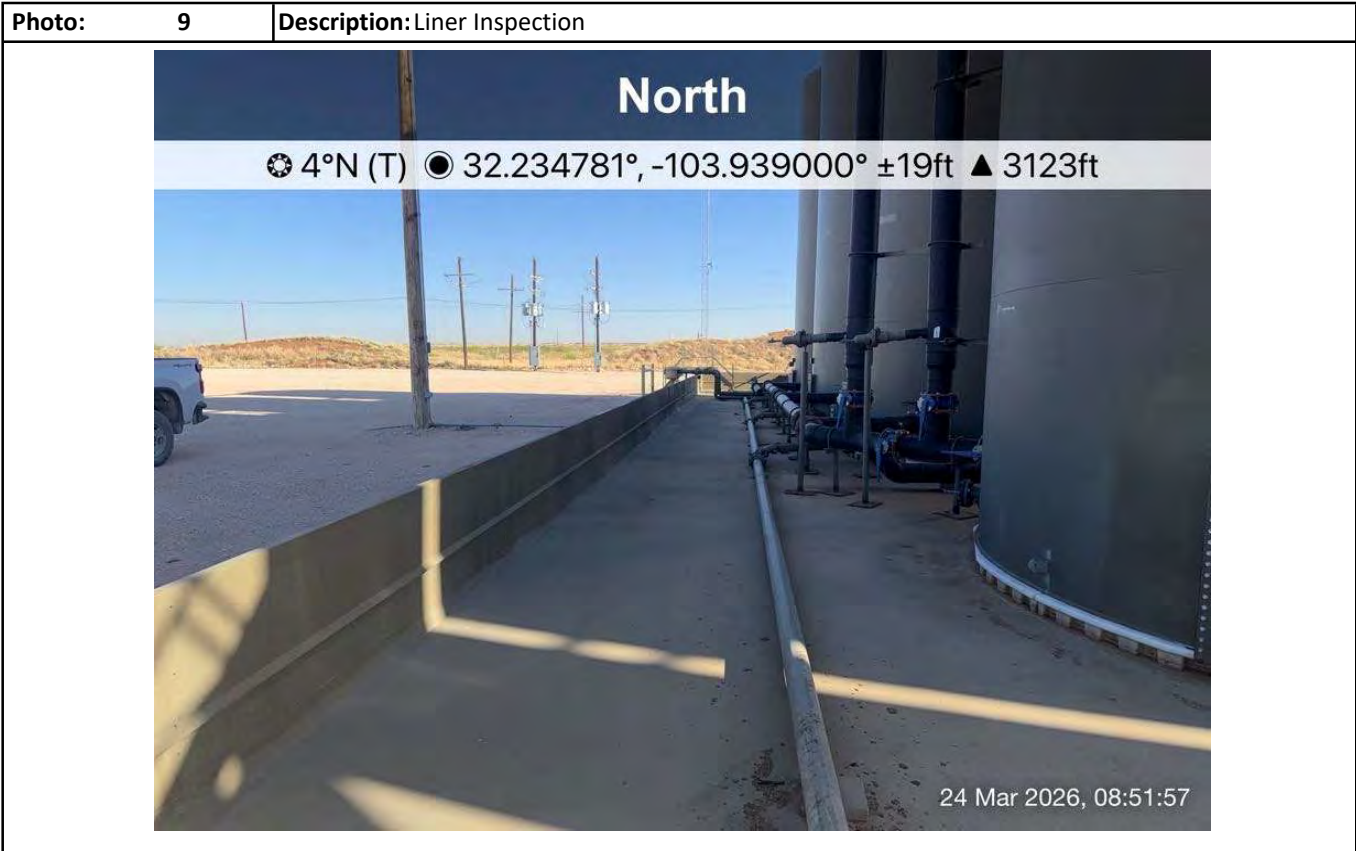


24 Mar 2026, 08:51:20

### Photographs



### Photographs



### Photographs

<b>Photo:</b>	<b>11</b>	<b>Description:</b> Liner Inspection
---------------	-----------	--------------------------------------

**East**

☉ 92°E (T)   ● 32.234743°, -103.938890° ±19ft   ▲ 3118ft

24 Mar 2026, 08:52:38

<b>Photo:</b>	<b>12</b>	<b>Description:</b> Liner Inspection
---------------	-----------	--------------------------------------

**West**

☉ 262°W (T)   ● 32.234830°, -103.938833° ±22ft   ▲ 3117ft

24 Mar 2026, 08:53:01

### Photographs

<b>Photo:</b>	<b>13</b>	<b>Description:</b> Liner Inspection
---------------	-----------	--------------------------------------

**South**

☉ 168°S (T)    ● 32.234869°, -103.938855° ±19ft    ▲ 3121ft




24 Mar 2026, 08:53:09

<b>Photo:</b>	<b>14</b>	<b>Description:</b> Liner Inspection
---------------	-----------	--------------------------------------

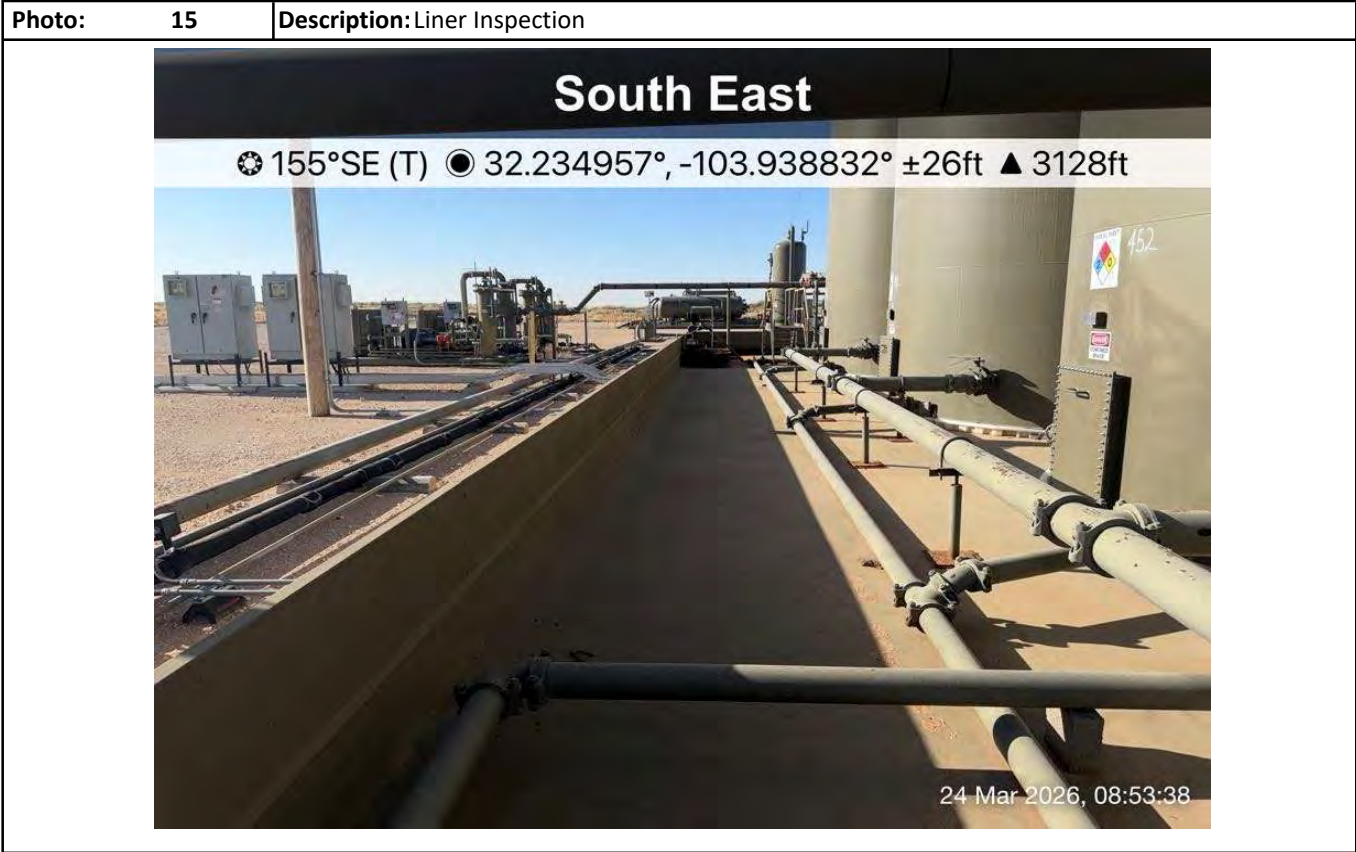
**South West**

☉ 236°SW (T)    ● 32.234949°, -103.938849° ±26ft    ▲ 3125ft



24 Mar 2026, 08:53:32

Photographs



## **Attachment IV**

### **Depth to Groundwater**



---

*New Mexico Office of the State Engineer*  
**Wells With Well Log Information**

---

No report data available.

**UTM Filters (in meters):**

**Easting:** 599966.73

**Northing:** 3566903.47

**Radius:** 805

\* UTM location was derived from PLSS - see Help

---

The data is furnished by the NMOSE/ISC and is accepted by the recipient with the expressed understanding that the OSE/ISC make no warranties, expressed or implied, concerning the accuracy, completeness, reliability, usability, or suitability for any particular purpose of the data.

---

# **Attachment V**

## **Liner Inspection Report**

### Liner Inspection Form



Client Devon Energy Production Company, LP

Site Name Fully Loaded 12 CTB 2

Lat/Long 32.234324, -103.938978

Release Date 24-Dec-25

Incident Number NAPP2535865109

NMOCD Notified 19-Mar-26

Inspection Date 3-24-26

Observations	Yes	No	Comments
Is the liner present?	✓		
Is the liner torn?		X	
Are there visible holes in the liner?		X	
Is the liner retaining any liquids?		X	
Does it appear the liner had the ability to contain the leak?	X		

Type of liner:      Earthen with liner                      Earthen no liner

Metal with Poly Lining                       Metal with Spray Epoxy Lining

Other: \_\_\_\_\_

Other concerns or observations: \_\_\_\_\_

\_\_\_\_\_

\_\_\_\_\_

Inspector Name Hector Luna

Inspector Signature *Hector Luna*

Sante Fe Main Office  
Phone: (505) 476-3441

General Information  
Phone: (505) 629-6116

Online Phone Directory  
<https://www.emnrd.nm.gov/ocd/contact-us>

**State of New Mexico**  
**Energy, Minerals and Natural Resources**  
**Oil Conservation Division**  
**1220 S. St Francis Dr.**  
**Santa Fe, NM 87505**

QUESTIONS

Action 566752

**QUESTIONS**

Operator: DEVON ENERGY PRODUCTION COMPANY, LP 333 West Sheridan Ave. Oklahoma City, OK 73102	OGRID: 6137
	Action Number: 566752
	Action Type: [C-141] Remediation Closure Request C-141 (C-141-v-Closure)

**QUESTIONS**

<b>Prerequisites</b>	
Incident ID (n#)	nAPP2535865109
Incident Name	NAPP2535865109 FULLY LOADED 12 CTB 2 @ FAPP2123646949
Incident Type	Produced Water Release
Incident Status	Remediation Closure Report Received
Incident Facility	[fAPP2123646949] FULLY LOADED 12 CTB 2

<b>Location of Release Source</b>	
<i>Please answer all the questions in this group.</i>	
Site Name	FULLY LOADED 12 CTB 2
Date Release Discovered	12/24/2025
Surface Owner	Federal

<b>Incident Details</b>	
<i>Please answer all the questions in this group.</i>	
Incident Type	Produced Water Release
Did this release result in a fire or is the result of a fire	No
Did this release result in any injuries	No
Has this release reached or does it have a reasonable probability of reaching a watercourse	No
Has this release endangered or does it have a reasonable probability of endangering public health	No
Has this release substantially damaged or will it substantially damage property or the environment	No
Is this release of a volume that is or may with reasonable probability be detrimental to fresh water	No

<b>Nature and Volume of Release</b>	
<i>Material(s) released, please answer all that apply below. Any calculations or specific justifications for the volumes provided should be attached to the follow-up C-141 submission.</i>	
Crude Oil Released (bbls) Details	Not answered.
Produced Water Released (bbls) Details	Cause: Corrosion   Dump Line   Produced Water   Released: 11 BBL   Recovered: 11 BBL   Lost: 0 BBL.
Is the concentration of chloride in the produced water >10,000 mg/l	Yes
Condensate Released (bbls) Details	Not answered.
Natural Gas Vented (Mcf) Details	Not answered.
Natural Gas Flared (Mcf) Details	Not answered.
Other Released Details	Not answered.
Are there additional details for the questions above (i.e. any answer containing Other, Specify, Unknown, and/or Fire, or any negative lost amounts)	Pinhole leak on dump line, allowed fluids to lined containment.

Sante Fe Main Office  
Phone: (505) 476-3441

General Information  
Phone: (505) 629-6116

Online Phone Directory  
<https://www.emnrd.nm.gov/ocd/contact-us>

**State of New Mexico**  
**Energy, Minerals and Natural Resources**  
**Oil Conservation Division**  
**1220 S. St Francis Dr.**  
**Santa Fe, NM 87505**

QUESTIONS, Page 2

Action 566752

**QUESTIONS (continued)**

Operator: DEVON ENERGY PRODUCTION COMPANY, LP 333 West Sheridan Ave. Oklahoma City, OK 73102	OGRID: 6137
	Action Number: 566752
	Action Type: [C-141] Remediation Closure Request C-141 (C-141-v-Closure)

**QUESTIONS**

<b>Nature and Volume of Release (continued)</b>	
Is this a gas only submission (i.e. only significant Mcf values reported)	<b>No, according to supplied volumes this does not appear to be a "gas only" report.</b>
Was this a major release as defined by Subsection A of 19.15.29.7 NMAC	<b>No</b>
Reasons why this would be considered a submission for a notification of a major release	<i>Unavailable.</i>
<i>With the implementation of the 19.15.27 NMAC (05/25/2021), venting and/or flaring of natural gas (i.e. gas only) are to be submitted on the C-129 form.</i>	

**Initial Response**

*The responsible party must undertake the following actions immediately unless they could create a safety hazard that would result in injury.*

The source of the release has been stopped	<b>True</b>
The impacted area has been secured to protect human health and the environment	<b>True</b>
Released materials have been contained via the use of berms or dikes, absorbent pads, or other containment devices	<b>True</b>
All free liquids and recoverable materials have been removed and managed appropriately	<b>True</b>
If all the actions described above have not been undertaken, explain why	<i>Not answered.</i>

*Per Paragraph (4) of Subsection B of 19.15.29.8 NMAC the responsible party may commence remediation immediately after discovery of a release. If remediation has begun, please prepare and attach a narrative of actions to date in the follow-up C-141 submission. If remedial efforts have been successfully completed or if the release occurred within a lined containment area (see Subparagraph (a) of Paragraph (5) of Subsection A of 19.15.29.11 NMAC), please prepare and attach all information needed for closure evaluation in the follow-up C-141 submission.*

I hereby certify that the information given above is true and complete to the best of my knowledge and understand that pursuant to OCD rules and regulations all operators are required to report and/or file certain release notifications and perform corrective actions for releases which may endanger public health or the environment. The acceptance of a C-141 report by the OCD does not relieve the operator of liability should their operations have failed to adequately investigate and remediate contamination that pose a threat to groundwater, surface water, human health or the environment. In addition, OCD acceptance of a C-141 report does not relieve the operator of responsibility for compliance with any other federal, state, or local laws and/or regulations.

I hereby agree and sign off to the above statement	Name: James Raley Title: EHS Professional Email: jim.ralej@dvn.com Date: 03/26/2026
--	--

Sante Fe Main Office  
Phone: (505) 476-3441

General Information  
Phone: (505) 629-6116

Online Phone Directory  
<https://www.emnrd.nm.gov/ocd/contact-us>

**State of New Mexico**  
**Energy, Minerals and Natural Resources**  
**Oil Conservation Division**  
**1220 S. St Francis Dr.**  
**Santa Fe, NM 87505**

QUESTIONS, Page 3

Action 566752

**QUESTIONS (continued)**

Operator: DEVON ENERGY PRODUCTION COMPANY, LP 333 West Sheridan Ave. Oklahoma City, OK 73102	OGRID: 6137
	Action Number: 566752
	Action Type: [C-141] Remediation Closure Request C-141 (C-141-v-Closure)

**QUESTIONS****Site Characterization**

Please answer all the questions in this group (only required when seeking remediation plan approval and beyond). This information must be provided to the appropriate district office no later than 90 days after the release discovery date.

What is the shallowest depth to groundwater beneath the area affected by the release in feet below ground surface (ft bgs)	Between 26 and 50 (ft.)
What method was used to determine the depth to ground water	NM OSE iWaters Database Search
Did this release impact groundwater or surface water	No
<b>What is the minimum distance, between the closest lateral extents of the release and the following surface areas:</b>	
A continuously flowing watercourse or any other significant watercourse	Between 1000 (ft.) and ½ (mi.)
Any lakebed, sinkhole, or playa lake (measured from the ordinary high-water mark)	Between 1 and 5 (mi.)
An occupied permanent residence, school, hospital, institution, or church	Between 1 and 5 (mi.)
A spring or a private domestic fresh water well used by less than five households for domestic or stock watering purposes	Between 1 and 5 (mi.)
Any other fresh water well or spring	Between 1 and 5 (mi.)
Incorporated municipal boundaries or a defined municipal fresh water well field	Greater than 5 (mi.)
A wetland	Between 1 and 5 (mi.)
A subsurface mine	Greater than 5 (mi.)
An (non-karst) unstable area	Greater than 5 (mi.)
Categorize the risk of this well / site being in a karst geology	Low
A 100-year floodplain	Between 1 and 5 (mi.)
Did the release impact areas not on an exploration, development, production, or storage site	No

**Remediation Plan**

Please answer all the questions that apply or are indicated. This information must be provided to the appropriate district office no later than 90 days after the release discovery date.

Requesting a remediation plan approval with this submission	Yes
<i>Attach a comprehensive report demonstrating the lateral and vertical extents of soil contamination associated with the release have been determined, pursuant to 19.15.29.11 NMAC and 19.15.29.13 NMAC.</i>	
Have the lateral and vertical extents of contamination been fully delineated	Yes
Was this release entirely contained within a lined containment area	Yes
<i>Per Subsection B of 19.15.29.11 NMAC unless the site characterization report includes completed efforts at remediation, the report must include a proposed remediation plan in accordance with 19.15.29.12 NMAC, which includes the anticipated timelines for beginning and completing the remediation.</i>	
On what estimated date will the remediation commence	03/23/2026
On what date will (or did) the final sampling or liner inspection occur	03/24/2026
On what date will (or was) the remediation complete(d)	03/24/2026
What is the estimated surface area (in square feet) that will be remediated	0
What is the estimated volume (in cubic yards) that will be remediated	0

*These estimated dates and measurements are recognized to be the best guess or calculation at the time of submission and may (be) change(d) over time as more remediation efforts are completed.*

*The OCD recognizes that proposed remediation measures may have to be minimally adjusted in accordance with the physical realities encountered during remediation. If the responsible party has any need to significantly deviate from the remediation plan proposed, then it should consult with the division to determine if another remediation plan submission is required.*

Sante Fe Main Office  
Phone: (505) 476-3441

General Information  
Phone: (505) 629-6116

Online Phone Directory  
<https://www.emnrd.nm.gov/ocd/contact-us>

**State of New Mexico**  
**Energy, Minerals and Natural Resources**  
**Oil Conservation Division**  
**1220 S. St Francis Dr.**  
**Santa Fe, NM 87505**

QUESTIONS, Page 4

Action 566752

**QUESTIONS (continued)**

Operator: DEVON ENERGY PRODUCTION COMPANY, LP 333 West Sheridan Ave. Oklahoma City, OK 73102	OGRID: 6137
	Action Number: 566752
	Action Type: [C-141] Remediation Closure Request C-141 (C-141-v-Closure)

**QUESTIONS**

<b>Remediation Plan (continued)</b>	
<i>Please answer all the questions that apply or are indicated. This information must be provided to the appropriate district office no later than 90 days after the release discovery date.</i>	
<b>This remediation will (or is expected to) utilize the following processes to remediate / reduce contaminants:</b>	
<i>(Select all answers below that apply.)</i>	
Is (or was) there affected material present needing to be removed	No
Is (or was) there a power wash of the lined containment area (to be) performed	Yes
OTHER (Non-listed remedial process)	Not answered.
<i>Per Subsection B of 19.15.29.11 NMAC unless the site characterization report includes completed efforts at remediation, the report must include a proposed remediation plan in accordance with 19.15.29.12 NMAC, which includes the anticipated timelines for beginning and completing the remediation.</i>	
I hereby certify that the information given above is true and complete to the best of my knowledge and understand that pursuant to OCD rules and regulations all operators are required to report and/or file certain release notifications and perform corrective actions for releases which may endanger public health or the environment. The acceptance of a C-141 report by the OCD does not relieve the operator of liability should their operations have failed to adequately investigate and remediate contamination that pose a threat to groundwater, surface water, human health or the environment. In addition, OCD acceptance of a C-141 report does not relieve the operator of responsibility for compliance with any other federal, state, or local laws and/or regulations.	
I hereby agree and sign off to the above statement	Name: James Raley Title: EHS Professional Email: jim.raley@dvsn.com Date: 03/26/2026
<i>The OCD recognizes that proposed remediation measures may have to be minimally adjusted in accordance with the physical realities encountered during remediation. If the responsible party has any need to significantly deviate from the remediation plan proposed, then it should consult with the division to determine if another remediation plan submission is required.</i>	

Sante Fe Main Office  
Phone: (505) 476-3441

General Information  
Phone: (505) 629-6116

Online Phone Directory  
<https://www.emnrd.nm.gov/ocd/contact-us>

**State of New Mexico**  
**Energy, Minerals and Natural Resources**  
**Oil Conservation Division**  
**1220 S. St Francis Dr.**  
**Santa Fe, NM 87505**

QUESTIONS, Page 6

Action 566752

**QUESTIONS (continued)**

Operator: DEVON ENERGY PRODUCTION COMPANY, LP 333 West Sheridan Ave. Oklahoma City, OK 73102	OGRID: 6137
	Action Number: 566752
	Action Type: [C-141] Remediation Closure Request C-141 (C-141-v-Closure)

**QUESTIONS**

<b>Liner Inspection Information</b>	
Last liner inspection notification (C-141L) recorded	<b>564645</b>
Liner inspection date pursuant to Subparagraph (a) of Paragraph (5) of Subsection A of 19.15.29.11 NMAC	<b>03/24/2026</b>
Was all the impacted materials removed from the liner	<b>Yes</b>
What was the liner inspection surface area in square feet	<b>4000</b>

<b>Remediation Closure Request</b>	
<i>Only answer the questions in this group if seeking remediation closure for this release because all remediation steps have been completed.</i>	
Requesting a remediation closure approval with this submission	<b>Yes</b>
Have the lateral and vertical extents of contamination been fully delineated	<b>Yes</b>
Was this release entirely contained within a lined containment area	<b>Yes</b>
What was the total surface area (in square feet) remediated	<b>0</b>
What was the total volume (cubic yards) remediated	<b>0</b>
Summarize any additional remediation activities not included by answers (above)	The Liner Inspection and correspondence with NMOCD were conducted in accordance with applicable NMOCD Regulations.

*The responsible party must attach information demonstrating they have complied with all applicable closure requirements and any conditions or directives of the OCD. This demonstration should be in the form of a comprehensive report (in .pdf format) including a scaled site map, sampling diagrams, relevant field notes, photographs of any excavation prior to backfilling, laboratory data including chain of custody documents of final sampling, and a narrative of the remedial activities. Refer to 19.15.29.12 NMAC.*

I hereby certify that the information given above is true and complete to the best of my knowledge and understand that pursuant to OCD rules and regulations all operators are required to report and/or file certain release notifications and perform corrective actions for releases which may endanger public health or the environment. The acceptance of a C-141 report by the OCD does not relieve the operator of liability should their operations have failed to adequately investigate and remediate contamination that pose a threat to groundwater, surface water, human health or the environment. In addition, OCD acceptance of a C-141 report does not relieve the operator of responsibility for compliance with any other federal, state, or local laws and/or regulations. The responsible party acknowledges they must substantially restore, reclaim, and re-vegetate the impacted surface area to the conditions that existed prior to the release or their final land use in accordance with 19.15.29.13 NMAC including notification to the OCD when reclamation and re-vegetation are complete.

I hereby agree and sign off to the above statement	Name: James Raley Title: EHS Professional Email: jim.raley@dmv.com Date: 03/26/2026
--	--

Sante Fe Main Office  
Phone: (505) 476-3441

General Information  
Phone: (505) 629-6116

Online Phone Directory  
<https://www.emnrd.nm.gov/oecd/contact-us>

**State of New Mexico**  
**Energy, Minerals and Natural Resources**  
**Oil Conservation Division**  
**1220 S. St Francis Dr.**  
**Santa Fe, NM 87505**

CONDITIONS

Action 566752

**CONDITIONS**

Operator: DEVON ENERGY PRODUCTION COMPANY, LP 333 West Sheridan Ave. Oklahoma City, OK 73102	OGRID: 6137
	Action Number: 566752
	Action Type: [C-141] Remediation Closure Request C-141 (C-141-v-Closure)

**CONDITIONS**

Created By	Condition	Condition Date
rhamlet	We have received your Remediation Closure Report for Incident #nAPP2535865109 FULLY LOADED 12 CTB 2, thank you. This Remediation Closure Report is approved.	3/27/2026