



701 Tradewinds Blvd  
Midland, Texas 79707  
Tel. 432-766-1918  
www.ntgenvironmental.com

January 26, 2026

Hilcorp Energy Company  
Attn: Mr. Billy Ginn  
Environmental Specialist  
1201 Louisiana Street  
Houston, Texas 77002

**Re: 2025 Annual Groundwater Monitoring Report  
North Monument G/SA Unit#2102  
Unit Letter O, Sec 32, T19S, R37E  
GPS Coodinates: 32.61233°N, -103.27262°W  
Lea County, New Mexico  
NMOCD Release Number: nRM1926352539/1RP-5677**

## **1. Introduction**

New Tech Global Environmental, LLC (NTGE) on behalf of Hilcorp Energy Company (Hilcorp), has prepared this 2025 Annual Groundwater Monitoring Report for submittal to the New Mexico Oil Conservation Division (NMOCD) District 1 in Hobbs, and Santa Fe, New Mexico. This report presents the results of the 2025 semi-annual groundwater sampling events (March 14 and September 16, 2025) collected from the three (3) monitor wells (MW-2, TMW-1, and TMW-2) located in Unit Letter O, Section 32, Township 19 South, Range 37 East, in Lea County, New Mexico. The geodetic position is latitude 32.61233° N, longitude -103.272262° W. See Figures 1 and 2 for Site Location and Topographic Maps.

## **2. Background**

A crude oil and produced water release occurred on August 16, 2019, due to corrosion and failure of a buried 3-inch steel flowline. The failure allowed for an unknown volume of crude oil and produced water to be released. Approximately 2.5 barrels (bbls) of crude oil and produced water were recovered. The fluid pooled in the pasture south of the well pad and west of the lease road. Immediate notice was given to Mr. Dylan Rose-Cross (NMOCD) by Mr. Jeffery Broom (Apache Environmental Tech) via email on August 16, 2019. The surface ownership is private. The initial C-141 was submitted on August 29, 2019, and assigned remediation permit number of 1RP-5677.

An Apache contractor remediated the spill area. On October 10, 2019, Apache applied for a variance to backfill the excavation due to TPH and chloride concentrations remaining above the NMOCD limits in soil below the excavation at approximately 12 feet bgs and groundwater between approximately 21 to 23 feet bgs. The request stated that Apache would backfill the excavation with clean unimpacted caliche to about 6 feet bgs, install a 20-mil polyethylene synthetic liner, and complete backfilling with clean topsoil containing less than 600 mg/Kg.

On October 16, 2019, NMOCD conditionally approved the variance request with the condition that Apache install two (2) monitor wells (TMW-1 and TMW-2), with TMW-1 installed as close as possible to the source of the release and TMW-2 installed hydraulically down gradient approximately 150 feet southeast of the excavation. NMOCD requested one (1) monitor well (MW-2) be installed hydraulically upgradient to monitor background groundwater quality. Apache proposed installing the monitor well 375 feet northwest

Mr. Billy Ginn  
January 26, 2026  
Page 2 of 3

of the release location.

On November 14, 2019, Apache backfilled the excavation with clean caliche to about six (6) feet bgs prior to installing the 20-mil polyethylene synthetic liner and completed backfilling above the liner with clean topsoil to the surface. The backfilled area measured approximately 16,024 square feet and was seeded with BLM Mix #2.

On March 11, 2020, Larson and Associates (LAI) oversaw the installation of monitoring wells (TMW-1 and TMW-2 and MW-2). The wells were drilled to depths of approximately 30 feet bgs. The wells were completed as 2-inch schedule 40 threaded PVC with 20 feet of 0.010" screening at base.

On December 21, 2020, LAI issued a report titled "1RP-5677 Closure Report North Monument G/SA Unit #2102 Produced Water and Crude Oil Release" documenting the excavation closure and monitoring well installations. The report was submitted to the NMOCD in Santa Fe and Hobbs, New Mexico. No response has been received from the NMOCD regarding this closure report and the incident remains open on the NMOCD web portal.

### **3. Groundwater Monitoring and Sampling Procedures**

NTGE was onsite to complete groundwater gauging and sampling events on March 14, 2025, and September 16, 2025. All three (3) monitor wells (MW-2, TMW-1, and TMW-2) were gauged, purged, and sampled in accordance with all appropriate local, state, and federal regulations. Prior to sampling, the wells were gauged to determine depth to static groundwater and measure Light Non-Aqueous Phase Liquids (LNAPL), if any. A minimum of three (3) well volumes (or wells bailed dry) were purged from each of the monitor wells utilizing a new polyethylene bailer with the purge water placed into onsite fifty-five (55) gallon barrel steel drums. Once the groundwater was allowed to recharge to within 90% of the original gauging depth, samples were collected from each of the monitor wells with new disposal poly bailers and twine and placed into preserved laboratory provided sample containers. The three (3) groundwater samples were placed on ice and transported to Eurofins Laboratory of Midland, Texas for analysis of BTEX by EPA Method 8260B and chlorides by EPA Method 300.0.

### **4. Groundwater Gradient**

On March 14 and September 16, 2025, NTGE was onsite to gauge each of the three (3) monitor wells. See Figures 3 for site monitoring well locations. Utilizing a water level indicator each of the wells were gauged from a mark on the north side of the well casing to a depth of first encountered groundwater and the bottom of the well. The corrected groundwater depth was then calculated, and a gradient map developed. Figures 4A and 4B indicate the groundwater gradient at the site is to the southeast towards monitor well TMW-2 which is consistent with previous gauging events.

### **5. Groundwater Sampling Results**

Analytical results indicated all samples were below the NMWQCC standards for BTEX for both sampling events. The chlorides exceeded the NMWQCC standard of 250 mg/L for monitoring wells TMW-1 and TMW-2 with concentrations of 296 mg/L and 312 mg/L, respectively for the March 14, 2025, sampling event, while only TMW-2 exceeded the chloride standard on September 16, 2025, sampling event with a result of 308 mg/L. See Table 3 for groundwater analytical results along with Figure 5A and 5B, Dissolved Concentration Maps. See Appendix A for laboratory analytical results.

### **6. Conclusions and Recommendations**

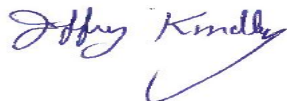
Based on the semi-annual groundwater results, the site gradient appears to be southeast towards monitoring

Mr. Billy Ginn  
January 26, 2026  
Page 3 of 3

well TMW-2 with analytical results above the NMWQCC standards for chlorides in monitor wells TMW-1 and TMW-2 for March sampling event and TMW-2 for September sampling event. All remaining analytes are below the NMWQCC standards. NTGE suggests continuing semi-annual sampling of the site with future evaluation of possible closure based on plume stability and chloride decline.

If you have any questions regarding this report or need additional information, please contact us at 432-766-1918.

Sincerely,  
**NTG Environmental**



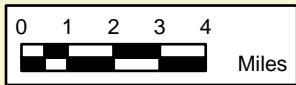
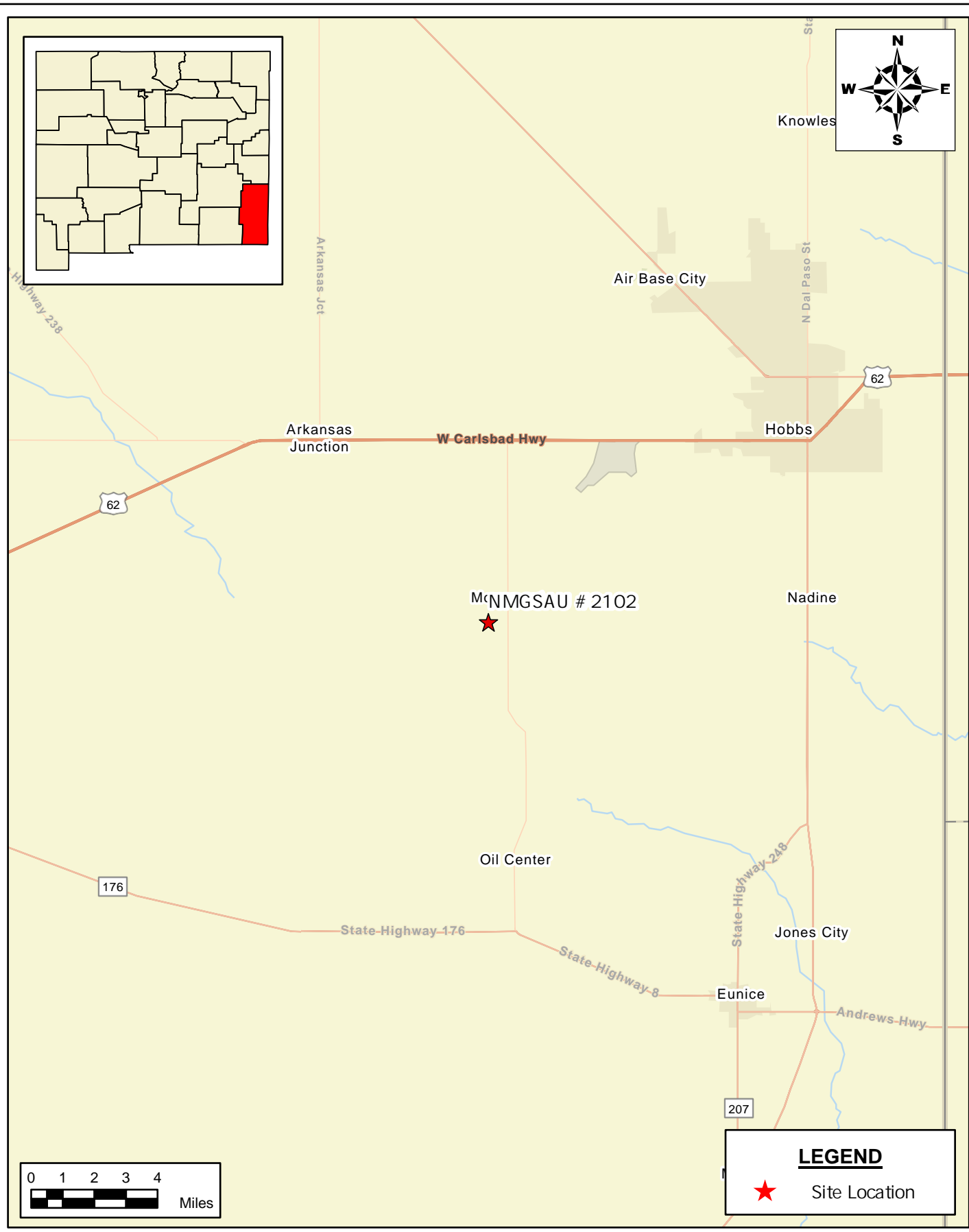
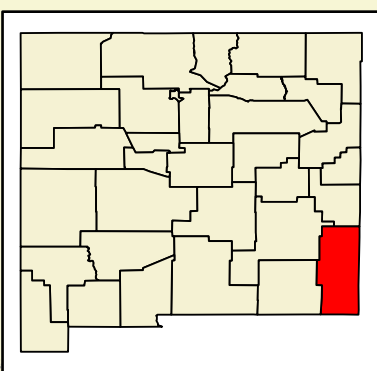
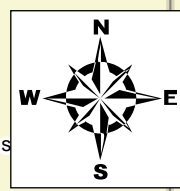
Jeff Kindley, P.G  
Senior Project Manager/Geologist

Attachments:

- Figure 1 – Site Location Map
- Figure 2 – Topographic Map
- Figure 3 – Monitor Well Location Map
- Figure 4A – Groundwater Gradient Map (March 14, 2025)
- Figure 4B – Groundwater Gradient Map (September 16, 2025)
- Figure 5A – Hydrocarbon Concentration Map (March 14, 2025)
- Figure 5B – Groundwater Gradient Map (September 16, 2025)
- Table 1 – Groundwater Elevation Data
- Table 2 – Groundwater Analytical Data
- Appendix A: - Laboratory Analytical Reports and Chain-of-Custody Documentation

## **FIGURES**

---



**LEGEND**

★ Site Location

Document Path: C:\Users\ntgegis\Desktop\Geodatabase\Figure\_1\_SLM\Map\_02252025.aprx

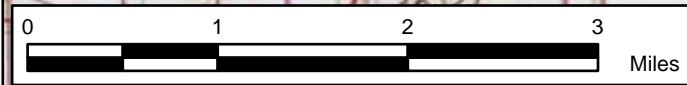
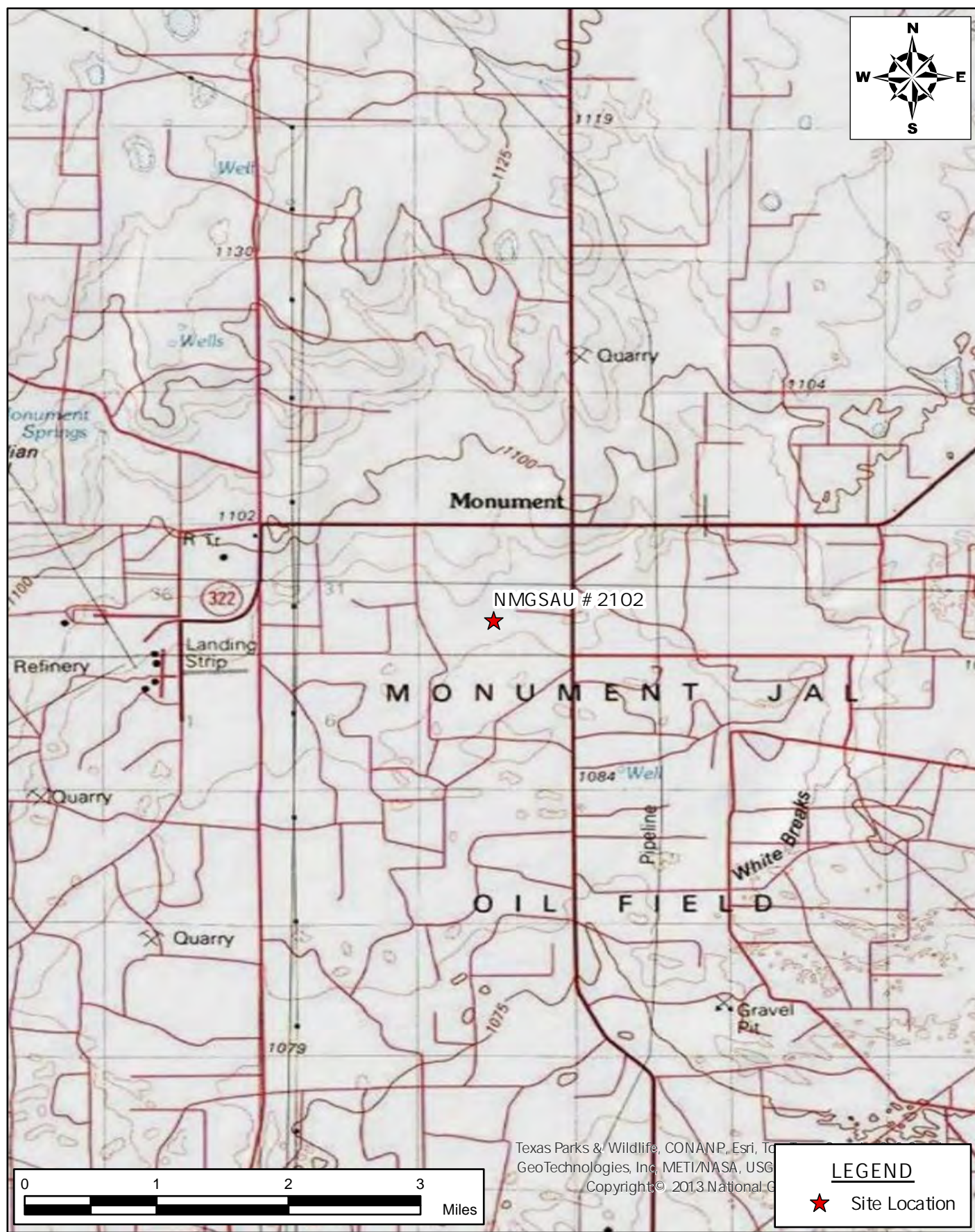
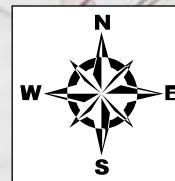
**SITE LOCATION MAP**  
**SITE PLAN**  
**HILCORP ENERGY**  
 NMGSAU #2102  
 LEA COUNTY, NEW MEXICO  
 32.613431, -103.273622

  
**New Tech Global Environmental, LLC**  
 911 Regional Park Drive  
 Houston, Texas 77060  
 T - 281.872.9300  
 F - 281.872.4521  
 Web: www.ntglobal.com

**NOTES:**  
 1. Base Image: ESRI Maps & Data 2013  
 2. Map Projection: NAD 1983 UTM Zone 13N

DRAWING NUMBER:  
**FIGURE 1**  
 SHEET NUMBER:  
**1 of 1**

SCALE: As Shown    Date: 2/25/2025    PROJECT #: 259810



Texas Parks & Wildlife, CONANP, Esri, T  
GeoTechnologies, Inc, METI/NASA, USG  
Copyright © 2013 National G


**LEGEND**

★ Site Location

Document Path: C:\Users\ntg\gis\Desktop\Geodatabase\Figure\_2\_TopoMap\_02252025.aprx

**TOPOGRAPHIC MAP  
SITE PLAN  
HILCORP ENERGY  
NMGSAU #2102  
LEA COUNTY, NEW MEXICO  
32.613431, -103.273622**

SCALE: As Shown    Date: 2/25/2025    PROJECT #: 259810

 **NTG ENVIRONMENTAL**

**New Tech Global Environmental, LLC**  
911 Regional Park Drive  
Houston, Texas 77060  
T - 281.872.9300  
F - 281.872.4521  
Web: www.ntglobal.com

**NOTES:**

1. Base Image: ESRI Maps & Data 2013
2. Map Projection: NAD 1983 UTM Zone 13N

DRAWING NUMBER:  
**FIGURE 2**  
SHEET NUMBER:  
**1 of 1**

Document Path: C:\Users\ntg\gis\New Tech Global\NTGE - Documents\NTGE - Projects\2025 PROJECTS\HILCORP\RSC\259810 NMGSAU\7 - Figures\GIS\Geodatabase\Figure\_3\_MonitorWellMap\_02252025.aprx



**MONITOR WELL LOCATION MAP  
SITE PLAN  
HILCORP ENERGY  
NMGSAU #2102  
LEA COUNTY, NEW MEXICO  
32.613431, -103.273622**

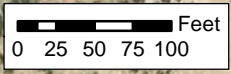
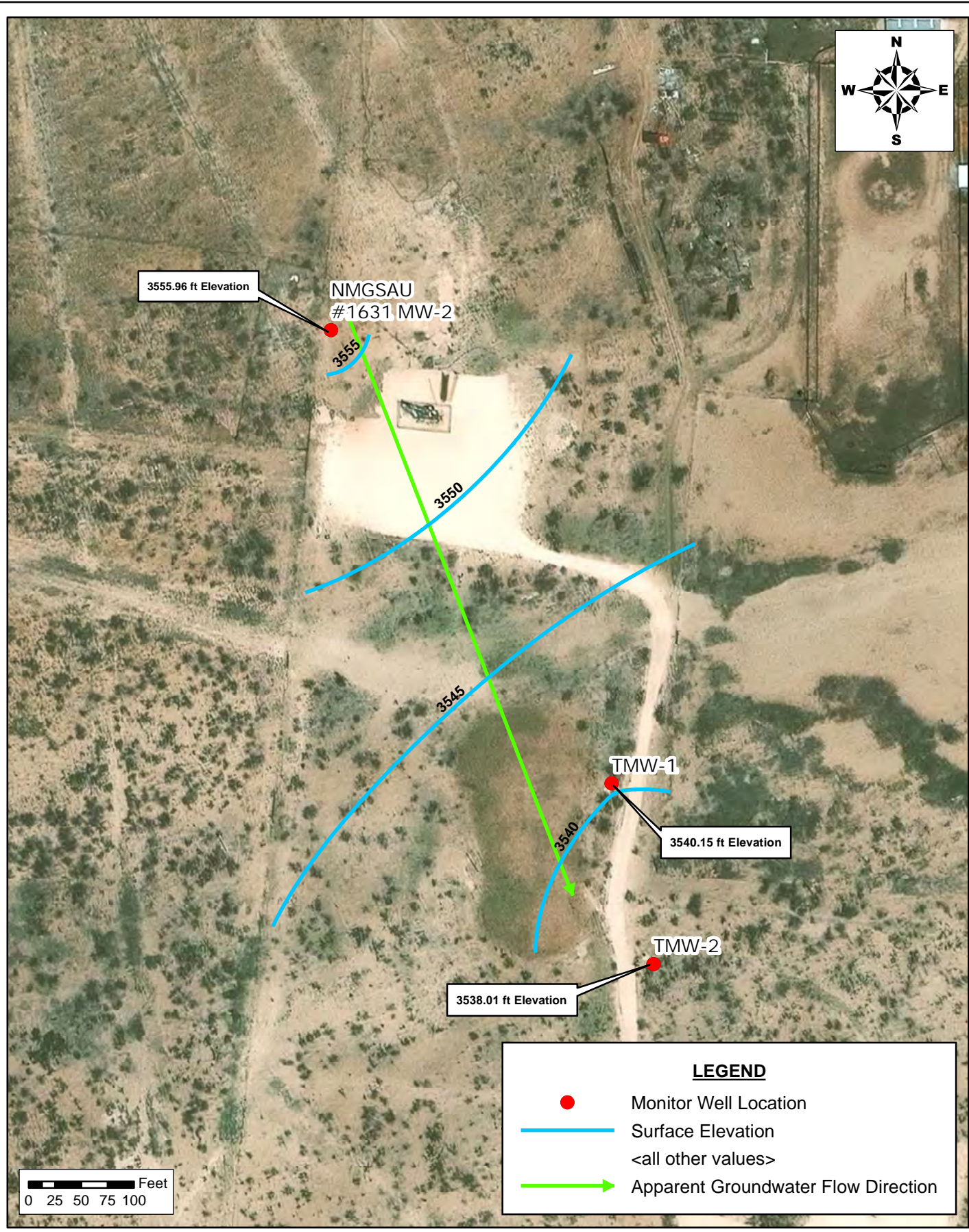
SCALE: As Shown    Date: 4/3/2025    PROJECT #: 259810

**New Tech Global Environmental, LLC**  
911 Regional Park Drive  
Houston, Texas 77060  
T - 281.872.9300  
F - 281.872.4521  
Web: www.ntglobal.com

**NOTES:**  
1. Base Image: ESRI Maps & Data 2013  
2. Map Projection: NAD 1983 UTM Zone 13N

DRAWING NUMBER:  
**FIGURE 3**  
SHEET NUMBER:  
**1 of 1**

Document Path: C:\Users\ntg\gis\New Tech Global\NTGE - Documents\NTGE - Projects\2025 PROJECTS\HILCORP\SC\259810 NMGSAU\7 - Figures\GIS\Geodatabase\Figure\_4\_Map\_04222025.mxd



**LEGEND**

- Monitor Well Location
- Surface Elevation  
<all other values>
- ➔ Apparent Groundwater Flow Direction

**GROUNDWATER GRADIENT MAP**  
 SITE PLAN  
 HILCORP ENERGY  
 NMGSAU #2102  
 LEA COUNTY, NEW MEXICO  
 32.613431° -103.273622°

SCALE: AS SHOWN    DATE: 04/25/2025    PROJECT #: 259810

  
**New Tech Global Environmental, LLC**  
 911 Regional Park Drive  
 Houston, Texas 77060  
 T - 281.872.9300  
 F - 281.872.4521  
 Web: www.ntgenvironmental.com

**NOTES:**

1. Base Image: ESRI Maps & Data 2017
2. Map Projection: NAD 1983
3. Contour Intervals equal 1 foot
4. Elevation in feet
5. Gauged on March 14, 2025

DRAWING NUMBER:  
**FIGURE 4A**  
 SHEET NUMBER:  
**1 of 1**

Document Path: C:\Users\ntg\gis\New Tech Global\NTGE - Documents\NTGE - Projects\2025 PROJECTS\HILCORP\RSC\259810 NMGSAU Unit 210217 - Figures\GIS\Geodatabase\Figure\_4\_GradientMap\_09162025.mxd



**GROUNDWATER GRADIENT MAP**  
 SITE PLAN  
 HILCORP ENERGY  
 NMGSAU #2102  
 LEA COUNTY, NEW MEXICO  
 32.613431° -103.273622°

SCALE: AS SHOWN    DATE: 10/08/2025    PROJECT #: 259810

**NTG**  
 ENVIRONMENTAL

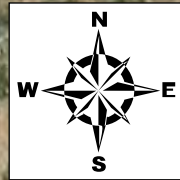
**New Tech Global Environmental, LLC**  
 911 Regional Park Drive  
 Houston, Texas 77060  
 T - 281.872.9300  
 F - 281.872.4521  
 Web: www.ntgenvironmental.com

**NOTES:**

1. Base Image: ESRI Maps & Data 2017
2. Map Projection: NAD 1983
3. Contour Intervals 5 ft
4. Gauged on 09/16/25

DRAWING NUMBER:  
**FIGURE 4B**

SHEET NUMBER:  
**1 of 1**



NMGS AU  
#1631 MW-2

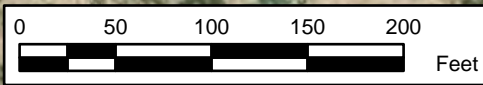
MW-2  
B <0.001  
BTEX <0.010  
CL 207

TMW-1

TMW-1  
B <0.001  
BTEX <0.01  
CL 296

TMW-2

TMW-2  
B <0.001  
BTEX <0.010  
CL 312



**LEGEND**

● Monitor Well

Document Path: C:\Users\ntg\gis\Desktop\Geodatabase\Figure\_5\_DissolvedConcentrationMap\_04032025.aprx

**DISSOLVED CONCENTRATION MAP  
SITE PLAN  
HILCORP ENERGY  
NMGS AU #2102  
LEA COUNTY, NEW MEXICO  
32.613431, -103.273622**



**New Tech Global Environmental, LLC**  
911 Regional Park Drive  
Houston, Texas 77060  
T - 281.872.9300  
F - 281.872.4521  
Web: www.ntglobal.com

**NOTES:**

1. Base Image: ESRI Maps & Data 2013
2. Map Projection: NAD 1983 UTM Zone 13N
3. Gauged on 3/13/25
4. Results in mg/L
5. Exceeds NMOCD Site Limits

DRAWING NUMBER:

**FIGURE 5**

SHEET NUMBER:

**1 of 1**

SCALE: As Shown      Date: 4/3/2025      PROJECT #: 259810

Document Path: C:\Users\ntg\gis\New Tech Global\NTGE - Documents\NTGE - Projects\2025 PROJECTS\HILCORP\RSC\259810 NMGSAU Unit 21027 - Figures\GIS\Geodatabase\Figure\_5\_ConcentrationMap\_09162025.mxd



**GROUNDWATER CONCENTRATION MAP**  
 SITE PLAN  
 HILCORP ENERGY  
 NMGSAU #2102  
 LEA COUNTY, NEW MEXICO  
 32.613431° -103.273622°



**New Tech Global Environmental, LLC**  
 911 Regional Park Drive  
 Houston, Texas 77060  
 T - 281.872.9300  
 F - 281.872.4521  
 Web: www.ntgenvironmental.com

**NOTES:**

1. Base Image: ESRI Maps & Data 2017
2. Map Projection: NAD 1983
3. Sampled on 09/16/25
4. Results in mg/L
5. Exceeds NMOC Standards

DRAWING NUMBER:

**FIGURE 5**

SHEET NUMBER:

**1 of 1**

SCALE: AS SHOWN    DATE: 10/08/2025    PROJECT #: 259810

## **TABLES**

---

**Table 1**  
**Groundwater Gauging Data and Corrected Groundwater Depth**  
**Hilcorp Energy Company**  
**NMGSAU 2102**  
**Lea County, New Mexico**

Sample ID	Gauging Date	Top of Casing (ft)	Measured Depth To Groundwater (ft)	Measured Depth To LNAPL (ft)	Measured Thickness of LNAPL (ft)	Corrected Groundwater Depth (ft)
MW-2 Screen unknown	03/12/20	3,569.52	13.59	--	--	3,555.93
	07/20/20	3,569.52	13.75	--	--	3,555.77
	10/01/20	3,569.52	13.90	--	--	3,555.62
	12/08/20	3,569.52	13.81	--	--	3,555.71
	03/10/21	3,569.52	13.80	--	--	3,555.72
	06/11/21	3,569.52	13.80	--	--	3,555.72
	10/12/21	3,569.52	13.81	--	--	3,555.71
	12/21/21	3,569.52	13.76	--	--	3,555.76
	08/15/22	3,569.52	13.95	--	--	3,555.57
	12/12/22	3,569.52	13.81	--	--	3,555.71
	03/09/23	3,569.52	13.80	--	--	3,555.72
	06/06/23	3,569.52	13.85	--	--	3,555.67
	09/05/23	3,569.52	14.02	--	--	3,555.50
	03/14/25	3,569.52	13.56	--	--	3,555.96
09/16/25	3,569.52	13.81	--	--	3,555.71	
TMW-1 Screen (9.83'-29.49')	03/12/20	3,564.82	24.37	--	--	3,540.45
	07/20/20	3,564.82	24.95	--	--	3,539.87
	10/01/20	3,564.82	24.90	--	--	3,539.92
	12/08/20	3,564.82	24.65	--	--	3,540.17
	03/10/21	3,564.82	24.60	--	--	3,540.22
	06/11/21	3,564.82	24.80	--	--	3,540.02
	10/12/21	3,564.82	24.96	--	--	3,539.86
	12/21/21	3,564.82	24.64	--	--	3,540.18
	08/15/22	3,564.82	25.45	--	--	3,539.37
	12/12/22	3,564.82	24.64	--	--	3,540.18
	03/09/23	3,564.82	24.56	--	--	3,540.26
	06/06/23	3,564.82	24.66	--	--	3,540.16
	09/05/23	3,564.82	25.61	--	--	3,539.21
	03/14/25	3,564.82	24.67	--	--	3,540.15
09/16/25	3,564.82	24.77	--	--	3,540.05	
TMW-2 Screen (10.05'-29.30')	03/12/20	3,564.47	26.38	--	--	3,538.09
	07/20/20	3,564.47	26.70	--	--	3,537.77
	10/01/20	3,564.47	26.70	--	--	3,537.77
	12/08/20	3,564.47	26.51	--	--	3,537.96
	03/10/21	3,564.47	26.40	--	--	3,538.07
	06/11/21	3,564.47	26.57	--	--	3,537.90
	10/12/21	3,564.47	26.72	--	--	3,537.75
	12/21/21	3,564.47	26.49	--	--	3,537.98
	08/15/22	3,564.47	27.01	--	--	3,537.46
	12/12/22	3,564.47	26.53	--	--	3,537.94
	03/09/23	3,564.47	26.43	--	--	3,538.04
	06/06/23	3,564.47	26.51	--	--	3,537.96

**Table 1**  
**Groundwater Gauging Data and Corrected Groundwater Depth**  
**Hilcorp Energy Company**  
**NMGSAU 2102**  
**Lea County, New Mexico**

Sample ID	Gauging Date	Top of Casing (ft)	Measured Depth To Groundwater (ft)	Measured Depth To LNAPL (ft)	Measured Thickness of LNAPL (ft)	Corrected Groundwater Depth (ft)
TMW-2 (Cont.)	09/05/23	3,564.47	27.11	--	--	3,537.36
	03/14/25	3,564.47	26.46	--	--	3,538.01
	09/16/25	3,564.47	26.30	--	--	3,538.17

**Table 2**  
**Groundwater Analytical Results**  
**Hilcorp Energy Company**  
**NMGSAU 2102**  
**Lea County, New Mexico**

Sample ID	Date	Benzene (mg/L)	Ethylbenzene (mg/L)	Toluene (mg/L)	Xylenes (mg/L)	Total BTEX (mg/L)	Chlorides (mg/L)
MW-2	03/12/20	<0.00100	<0.00100	<0.00100	<0.00300	<0.00300	230
	07/20/20	<0.00200	<0.00200	<0.00200	<0.00600	<0.00600	231
	10/01/20	<0.00200	<0.00200	<0.00200	<0.00200	<0.00200	241
	12/08/20	<0.00200	<0.00200	<0.00200	<0.00200	<0.00200	227
	03/10/21	<0.00200	<0.00200	<0.00200	<0.00200	<0.00200	235
	06/11/21	<0.00200	<0.00200	<0.00200	<0.00400	<0.00400	212
	10/12/21	<0.00200	<0.00200	<0.00200	<0.00400	<0.00400	207
	12/21/21	<0.00200	<0.00200	<0.00200	<0.00400	<0.00400	222
	08/15/22	<0.00200	<0.00200	<0.00200	<0.00400	<0.00400	232
	12/12/22	<0.00200	<0.00200	<0.00200	<0.00400	<0.00400	223
	03/09/23	<0.00200	<0.00200	<0.00200	<0.00400	<0.00400	254
	06/06/23	<0.00200	<0.00200	<0.00200	<0.00400	<0.00400	236
	09/05/23	<0.00200	<0.00200	<0.00200	<0.00400	<0.00200	232
	03/14/25	<0.00100	<0.00100	<0.00100	<0.0100	<0.0100	207
09/17/25	<0.00200	<0.00200	<0.00200	<0.00400	<0.00400	207	
TMW-1	03/12/20	<0.00100	<0.00100	<0.00100	<0.00300	<0.00300	360
	07/20/20	<0.00200	<0.00200	<0.00200	<0.00600	<0.00600	432
	10/01/20	<0.00200	<0.00200	<0.00200	<0.00200	<0.00200	452
	12/08/20	<0.00200	<0.00200	<0.00200	<0.00200	<0.00200	449
	03/10/21	<0.00200	<0.00200	<0.00200	<0.00200	<0.00200	418
	06/11/21	<0.00200	<0.00200	<0.00200	<0.00400	<0.00400	361
	10/12/21	<0.00200	<0.00200	<0.00200	<0.00400	<0.00400	291
	12/21/21	<0.00200	<0.00200	<0.00200	<0.00400	<0.00400	406
	08/15/22	<0.00200	<0.00200	<0.00200	<0.00400	<0.00400	306
	12/12/22	<0.00200	<0.00200	<0.00200	<0.00400	<0.00400	358
	03/09/23	<0.00200	<0.00200	<0.00200	<0.00400	<0.00400	378
	06/06/23	<0.00200	<0.00200	<0.00200	<0.00400	<0.00400	355
	09/05/23	<0.00200	<0.00200	<0.00200	<0.00400	<0.00400	350
	03/14/25	<0.00100	<0.00100	<0.00100	<0.0100	<0.0100	296
09/17/25	<0.00200	<0.00200	<0.00200	<0.00400	<0.00400	207	
TMW-2	03/12/20	<0.00100	<0.00100	<0.00100	<0.00300	<0.00300	423
	07/20/20	<0.00200	<0.00200	<0.00200	<0.00600	<0.00600	664

**Table 2  
Groundwater Analytical Results  
Hilcorp Energy Company  
NMGSAU 2102  
Lea County, New Mexico**

Sample ID	Date	Benzene (mg/L)	Ethylbenzene (mg/L)	Toluene (mg/L)	Xylenes (mg/L)	Total BTEX (mg/L)	Chlorides (mg/L)
TMW-2 (Cont.)	10/01/20	<0.00200	<0.00200	<0.00200	<0.00200	<0.00200	591
	12/08/20	<0.00200	<0.00200	<0.00200	<0.00200	<0.00200	473
	03/10/21	<0.00200	<0.00200	<0.00200	<0.00200	<0.00200	428
	06/11/21	<0.00200	<0.00200	<0.00200	<0.00400	<0.00400	402
	10/12/21	<0.00200	<0.00200	<0.00200	<0.00400	<0.00400	325
	12/21/21	<0.00200	<0.00200	<0.00200	<0.00400	<0.00400	388
	08/15/22	<0.00200	<0.00200	<0.00200	<0.00400	<0.00400	362
	12/12/22	<0.00200	<0.00200	<0.00200	<0.00400	<0.00400	338
	03/09/23	<0.00200	<0.00200	<0.00200	<0.00400	<0.00400	401
	06/06/23	<0.00200	<0.00200	<0.00200	<0.00400	<0.00400	393
	09/05/23	<0.00200	<0.00200	<0.00200	<0.00400	<0.00400	360
	03/14/25	<0.00100	<0.00100	<0.00100	<0.0100	<0.0100	312
09/17/25	<0.00200	<0.00200	<0.00200	<0.0040	<0.0040	308	
<b>Regulatory Limits (mg/kg)</b>		<b>0.005*</b>	<b>1*</b>	<b>0.7*</b>	<b>0.62*</b>	<b>NA</b>	<b>250**</b>

- exceeds regulatory limits

mg/L - milligram per Liter

Analysis performed by Eurofins Laboratories

<: indicates parameter concentration is below the analytical method reporting limits (RL)

\*: NMWQCC human health standard

**ATTACHMENT A: LABORATORY ANALYTICAL REPORTS AND  
CHAIN-OF-CUSTODY DOCUMENTS**

---



Environment Testing

- 1
- 2
- 3
- 4
- 5
- 6
- 7
- 8
- 9
- 10
- 11
- 12
- 13
- 14

# ANALYTICAL REPORT

## PREPARED FOR

Attn: Jeff Kindley  
 NT Global  
 701 Tradewinds Blvd  
 Midland, Texas 79706  
 Generated 3/21/2025 1:33:53 PM

## JOB DESCRIPTION

NMGSAAU  
 Lea County New Mexico

## JOB NUMBER

820-17952-1

Eurofins Lubbock  
 6701 Aberdeen Ave.  
 Suite 8  
 Lubbock TX 79424



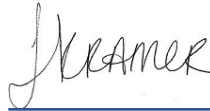
# Eurofins Lubbock

## Job Notes

This report may not be reproduced except in full, and with written approval from the laboratory. The results relate only to the samples tested. For questions please contact the Project Manager at the e-mail address or telephone number listed on this page.

The test results in this report relate only to the samples as received by the laboratory and will meet all requirements of the methodology, with any exceptions noted. This report shall not be reproduced except in full, without the express written approval of the laboratory. All questions should be directed to the Eurofins Environment Testing South Central, LLC Project Manager.

## Authorization



Generated  
3/21/2025 1:33:53 PM

Authorized for release by  
Jessica Kramer, Project Manager  
[Jessica.Kramer@et.eurofinsus.com](mailto:Jessica.Kramer@et.eurofinsus.com)  
(432)704-5440

- 1
- 2
- 3
- 4
- 5
- 6
- 7
- 8
- 9
- 10
- 11
- 12
- 13
- 14

Client: NT Global  
Project/Site: NMGSAAU

Laboratory Job ID: 820-17952-1  
SDG: Lea County New Mexico

# Table of Contents

Cover Page . . . . .	1
Table of Contents . . . . .	3
Definitions/Glossary . . . . .	4
Case Narrative . . . . .	5
Client Sample Results . . . . .	6
Surrogate Summary . . . . .	8
QC Sample Results . . . . .	9
QC Association Summary . . . . .	12
Lab Chronicle . . . . .	13
Certification Summary . . . . .	14
Method Summary . . . . .	15
Sample Summary . . . . .	16
Chain of Custody . . . . .	17
Receipt Checklists . . . . .	19

- 1
- 2
- 3
- 4
- 5
- 6
- 7
- 8
- 9
- 10
- 11
- 12
- 13
- 14

## Definitions/Glossary

Client: NT Global  
Project/Site: NMGSAAU

Job ID: 820-17952-1  
SDG: Lea County New Mexico

## Qualifiers

## GC/MS VOA

Qualifier	Qualifier Description
U	Indicates the analyte was analyzed for but not detected.

## HPLC/IC

Qualifier	Qualifier Description
4	MS, MSD: The analyte present in the original sample is greater than 4 times the matrix spike concentration; therefore, control limits are not applicable.
J	Result is less than the RL but greater than or equal to the MDL and the concentration is an approximate value.
U	Indicates the analyte was analyzed for but not detected.

## Glossary

Abbreviation	These commonly used abbreviations may or may not be present in this report.
☼	Listed under the "D" column to designate that the result is reported on a dry weight basis
%R	Percent Recovery
CFL	Contains Free Liquid
CFU	Colony Forming Unit
CNF	Contains No Free Liquid
DER	Duplicate Error Ratio (normalized absolute difference)
Dil Fac	Dilution Factor
DL	Detection Limit (DoD/DOE)
DL, RA, RE, IN	Indicates a Dilution, Re-analysis, Re-extraction, or additional Initial metals/anion analysis of the sample
DLC	Decision Level Concentration (Radiochemistry)
EDL	Estimated Detection Limit (Dioxin)
LOD	Limit of Detection (DoD/DOE)
LOQ	Limit of Quantitation (DoD/DOE)
MCL	EPA recommended "Maximum Contaminant Level"
MDA	Minimum Detectable Activity (Radiochemistry)
MDC	Minimum Detectable Concentration (Radiochemistry)
MDL	Method Detection Limit
ML	Minimum Level (Dioxin)
MPN	Most Probable Number
MQL	Method Quantitation Limit
NC	Not Calculated
ND	Not Detected at the reporting limit (or MDL or EDL if shown)
NEG	Negative / Absent
POS	Positive / Present
PQL	Practical Quantitation Limit
PRES	Presumptive
QC	Quality Control
RER	Relative Error Ratio (Radiochemistry)
RL	Reporting Limit or Requested Limit (Radiochemistry)
RPD	Relative Percent Difference, a measure of the relative difference between two points
TEF	Toxicity Equivalent Factor (Dioxin)
TEQ	Toxicity Equivalent Quotient (Dioxin)
TNTC	Too Numerous To Count

# Case Narrative

Client: NT Global  
Project: NMGSAAU

Job ID: 820-17952-1

**Job ID: 820-17952-1**

**Eurofins Lubbock**

## Job Narrative 820-17952-1

Analytical test results meet all requirements of the associated regulatory program listed on the Accreditation/Certification Summary Page unless otherwise noted under the individual analysis. Data qualifiers and/or narrative comments are included to explain any exceptions, if applicable.

- Matrix QC may not be reported if insufficient sample is provided or site-specific QC samples were not submitted. In these situations, to demonstrate precision and accuracy at a batch level, a LCS/LCSD may be performed, unless otherwise specified in the method.
- Surrogate and/or isotope dilution analyte recoveries (if applicable) which are outside of the QC window are confirmed unless attributed to a dilution or otherwise noted in the narrative.

Regulated compliance samples (e.g. SDWA, NPDES) must comply with the associated agency requirements/permits.

### Receipt

The samples were received on 3/17/2025 1:53 PM. Unless otherwise noted below, the samples arrived in good condition, and, where required, properly preserved and on ice. The temperature of the cooler at receipt time was 4.6°C.

### GC/MS VOA

No additional analytical or quality issues were noted, other than those described above or in the Definitions/ Glossary page.

### HPLC/IC

Method 300\_ORGFM\_28D: The matrix spike / matrix spike duplicate (MS/MSD) recoveries for analytical batch 860-223754 were outside control limits. Sample matrix interference is suspected because the associated laboratory control sample (LCS) recovery was within acceptance limits.

No additional analytical or quality issues were noted, other than those described above or in the Definitions/ Glossary page.

Eurofins Lubbock



### Client Sample Results

Client: NT Global  
Project/Site: NMGSAAU

Job ID: 820-17952-1  
SDG: Lea County New Mexico

**Client Sample ID: TMW-1**

**Lab Sample ID: 820-17952-1**

Date Collected: 03/14/25 12:30

Matrix: Water

Date Received: 03/17/25 13:53

**Method: SW846 8260D - Volatile Organic Compounds by GC/MS**

Analyte	Result	Qualifier	RL	MDL	Unit	D	Prepared	Analyzed	Dil Fac
Benzene	<0.00100	U	0.00100		mg/L			03/19/25 05:55	1
Toluene	<0.00100	U	0.00100		mg/L			03/19/25 05:55	1
Ethylbenzene	<0.00100	U	0.00100		mg/L			03/19/25 05:55	1
m,p-Xylenes	<0.0100	U	0.0100		mg/L			03/19/25 05:55	1
o-Xylene	<0.00100	U	0.00100		mg/L			03/19/25 05:55	1
Xylenes, Total	<0.0100	U	0.0100		mg/L			03/19/25 05:55	1

Surrogate	%Recovery	Qualifier	Limits	Prepared	Analyzed	Dil Fac
1,2-Dichloroethane-d4 (Surr)	110		63 - 144		03/19/25 05:55	1
4-Bromofluorobenzene (Surr)	101		74 - 124		03/19/25 05:55	1
Dibromofluoromethane (Surr)	103		75 - 131		03/19/25 05:55	1
Toluene-d8 (Surr)	102		80 - 120		03/19/25 05:55	1

**Method: TAL SOP Total BTEX - Total BTEX Calculation**

Analyte	Result	Qualifier	RL	MDL	Unit	D	Prepared	Analyzed	Dil Fac
Total BTEX	<0.0100	U	0.0100		mg/L			03/19/25 05:55	1

**Method: EPA 300.0 - Anions, Ion Chromatography**

Analyte	Result	Qualifier	RL	MDL	Unit	D	Prepared	Analyzed	Dil Fac
Chloride	296		0.500		mg/L			03/21/25 01:35	1

**Client Sample ID: TMW-2**

**Lab Sample ID: 820-17952-2**

Date Collected: 03/14/25 13:15

Matrix: Water

Date Received: 03/17/25 13:53

**Method: SW846 8260D - Volatile Organic Compounds by GC/MS**

Analyte	Result	Qualifier	RL	MDL	Unit	D	Prepared	Analyzed	Dil Fac
Benzene	<0.00100	U	0.00100		mg/L			03/19/25 06:15	1
Toluene	<0.00100	U	0.00100		mg/L			03/19/25 06:15	1
Ethylbenzene	<0.00100	U	0.00100		mg/L			03/19/25 06:15	1
m,p-Xylenes	<0.0100	U	0.0100		mg/L			03/19/25 06:15	1
o-Xylene	<0.00100	U	0.00100		mg/L			03/19/25 06:15	1
Xylenes, Total	<0.0100	U	0.0100		mg/L			03/19/25 06:15	1

Surrogate	%Recovery	Qualifier	Limits	Prepared	Analyzed	Dil Fac
1,2-Dichloroethane-d4 (Surr)	106		63 - 144		03/19/25 06:15	1
4-Bromofluorobenzene (Surr)	97		74 - 124		03/19/25 06:15	1
Dibromofluoromethane (Surr)	98		75 - 131		03/19/25 06:15	1
Toluene-d8 (Surr)	98		80 - 120		03/19/25 06:15	1

**Method: TAL SOP Total BTEX - Total BTEX Calculation**

Analyte	Result	Qualifier	RL	MDL	Unit	D	Prepared	Analyzed	Dil Fac
Total BTEX	<0.0100	U	0.0100		mg/L			03/19/25 06:15	1

**Method: EPA 300.0 - Anions, Ion Chromatography**

Analyte	Result	Qualifier	RL	MDL	Unit	D	Prepared	Analyzed	Dil Fac
Chloride	312		0.500		mg/L			03/21/25 01:55	1

Eurofins Lubbock

### Client Sample Results

Client: NT Global  
 Project/Site: NMGSAAU

Job ID: 820-17952-1  
 SDG: Lea County New Mexico

**Client Sample ID: MW-2**

**Lab Sample ID: 820-17952-3**

Date Collected: 03/14/25 12:00

Matrix: Water

Date Received: 03/17/25 13:53

**Method: SW846 8260D - Volatile Organic Compounds by GC/MS**

Analyte	Result	Qualifier	RL	MDL	Unit	D	Prepared	Analyzed	Dil Fac
Benzene	<0.00100	U	0.00100		mg/L			03/19/25 06:36	1
Toluene	<0.00100	U	0.00100		mg/L			03/19/25 06:36	1
Ethylbenzene	<0.00100	U	0.00100		mg/L			03/19/25 06:36	1
m,p-Xylenes	<0.0100	U	0.0100		mg/L			03/19/25 06:36	1
o-Xylene	<0.00100	U	0.00100		mg/L			03/19/25 06:36	1
Xylenes, Total	<0.0100	U	0.0100		mg/L			03/19/25 06:36	1

Surrogate	%Recovery	Qualifier	Limits	Prepared	Analyzed	Dil Fac
1,2-Dichloroethane-d4 (Surr)	110		63 - 144		03/19/25 06:36	1
4-Bromofluorobenzene (Surr)	98		74 - 124		03/19/25 06:36	1
Dibromofluoromethane (Surr)	102		75 - 131		03/19/25 06:36	1
Toluene-d8 (Surr)	100		80 - 120		03/19/25 06:36	1

**Method: TAL SOP Total BTEX - Total BTEX Calculation**

Analyte	Result	Qualifier	RL	MDL	Unit	D	Prepared	Analyzed	Dil Fac
Total BTEX	<0.0100	U	0.0100		mg/L			03/19/25 06:36	1

**Method: EPA 300.0 - Anions, Ion Chromatography**

Analyte	Result	Qualifier	RL	MDL	Unit	D	Prepared	Analyzed	Dil Fac
Chloride	207		0.500		mg/L			03/21/25 02:15	1

### Surrogate Summary

Client: NT Global  
 Project/Site: NMGSAAU

Job ID: 820-17952-1  
 SDG: Lea County New Mexico

**Method: 8260D - Volatile Organic Compounds by GC/MS**

Matrix: Water

Prep Type: Total/NA

Lab Sample ID	Client Sample ID	Percent Surrogate Recovery (Acceptance Limits)			
		DCA (63-144)	BFB (74-124)	DBFM (75-131)	TOL (80-120)
820-17952-1	TMW-1	110	101	103	102
820-17952-2	TMW-2	106	97	98	98
820-17952-3	MW-2	110	98	102	100
860-96005-B-10 MS	Matrix Spike	101	99	99	101
860-96005-B-10 MSD	Matrix Spike Duplicate	100	97	100	101
LCS 860-223237/3	Lab Control Sample	101	98	98	100
LCSD 860-223237/4	Lab Control Sample Dup	100	98	99	99
MB 860-223237/10	Method Blank	106	99	101	99

**Surrogate Legend**

- DCA = 1,2-Dichloroethane-d4 (Surr)
- BFB = 4-Bromofluorobenzene (Surr)
- DBFM = Dibromofluoromethane (Surr)
- TOL = Toluene-d8 (Surr)



### QC Sample Results

Client: NT Global  
Project/Site: NMGSAAU

Job ID: 820-17952-1  
SDG: Lea County New Mexico

#### Method: 8260D - Volatile Organic Compounds by GC/MS

Lab Sample ID: MB 860-223237/10  
Matrix: Water  
Analysis Batch: 223237

Client Sample ID: Method Blank  
Prep Type: Total/NA

Analyte	MB Result	MB Qualifier	RL	MDL	Unit	D	Prepared	Analyzed	Dil Fac
Benzene	<0.00100	U	0.00100		mg/L			03/18/25 23:45	1
Toluene	<0.00100	U	0.00100		mg/L			03/18/25 23:45	1
Ethylbenzene	<0.00100	U	0.00100		mg/L			03/18/25 23:45	1
m,p-Xylenes	<0.0100	U	0.0100		mg/L			03/18/25 23:45	1
o-Xylene	<0.00100	U	0.00100		mg/L			03/18/25 23:45	1
Xylenes, Total	<0.0100	U	0.0100		mg/L			03/18/25 23:45	1

Surrogate	MB %Recovery	MB Qualifier	Limits	Prepared	Analyzed	Dil Fac
1,2-Dichloroethane-d4 (Surr)	106		63 - 144		03/18/25 23:45	1
4-Bromofluorobenzene (Surr)	99		74 - 124		03/18/25 23:45	1
Dibromofluoromethane (Surr)	101		75 - 131		03/18/25 23:45	1
Toluene-d8 (Surr)	99		80 - 120		03/18/25 23:45	1

Lab Sample ID: LCS 860-223237/3  
Matrix: Water  
Analysis Batch: 223237

Client Sample ID: Lab Control Sample  
Prep Type: Total/NA

Analyte	Spike Added	LCS Result	LCS Qualifier	Unit	D	%Rec	%Rec Limits
Benzene	0.0500	0.04568		mg/L		91	75 - 125
Toluene	0.0500	0.04680		mg/L		94	75 - 130
Ethylbenzene	0.0500	0.04780		mg/L		96	75 - 125
m,p-Xylenes	0.0500	0.04699		mg/L		94	75 - 125
o-Xylene	0.0500	0.04763		mg/L		95	75 - 125

Surrogate	LCS %Recovery	LCS Qualifier	Limits
1,2-Dichloroethane-d4 (Surr)	101		63 - 144
4-Bromofluorobenzene (Surr)	98		74 - 124
Dibromofluoromethane (Surr)	98		75 - 131
Toluene-d8 (Surr)	100		80 - 120

Lab Sample ID: LCSD 860-223237/4  
Matrix: Water  
Analysis Batch: 223237

Client Sample ID: Lab Control Sample Dup  
Prep Type: Total/NA

Analyte	Spike Added	LCSD Result	LCSD Qualifier	Unit	D	%Rec	%Rec Limits	RPD	RPD Limit
Benzene	0.0500	0.04565		mg/L		91	75 - 125	0	25
Toluene	0.0500	0.04658		mg/L		93	75 - 130	0	25
Ethylbenzene	0.0500	0.04779		mg/L		96	75 - 125	0	25
m,p-Xylenes	0.0500	0.04753		mg/L		95	75 - 125	1	25
o-Xylene	0.0500	0.04804		mg/L		96	75 - 125	1	25

Surrogate	LCSD %Recovery	LCSD Qualifier	Limits
1,2-Dichloroethane-d4 (Surr)	100		63 - 144
4-Bromofluorobenzene (Surr)	98		74 - 124
Dibromofluoromethane (Surr)	99		75 - 131
Toluene-d8 (Surr)	99		80 - 120

Eurofins Lubbock

### QC Sample Results

Client: NT Global  
Project/Site: NMGSAAU

Job ID: 820-17952-1  
SDG: Lea County New Mexico

#### Method: 8260D - Volatile Organic Compounds by GC/MS (Continued)

Lab Sample ID: 860-96005-B-10 MS  
Matrix: Water  
Analysis Batch: 223237

Client Sample ID: Matrix Spike  
Prep Type: Total/NA

Analyte	Sample	Sample	Spike	MS	MS	Unit	D	%Rec	%Rec	Limits
	Result	Qualifier	Added	Result	Qualifier					
Benzene	<0.00100	U	0.0500	0.04691		mg/L		94		66 - 142
Toluene	<0.00100	U	0.0500	0.04947		mg/L		99		59 - 139
Ethylbenzene	<0.00100	U	0.0500	0.04946		mg/L		99		75 - 125
m,p-Xylenes	<0.0100	U	0.0500	0.04953		mg/L		99		75 - 125
o-Xylene	<0.00100	U	0.0500	0.04965		mg/L		99		75 - 125
<b>MS MS</b>										
<b>Surrogate</b>	<b>%Recovery</b>	<b>Qualifier</b>	<b>Limits</b>							
1,2-Dichloroethane-d4 (Surr)	101		63 - 144							
4-Bromofluorobenzene (Surr)	99		74 - 124							
Dibromofluoromethane (Surr)	99		75 - 131							
Toluene-d8 (Surr)	101		80 - 120							

Lab Sample ID: 860-96005-B-10 MSD  
Matrix: Water  
Analysis Batch: 223237

Client Sample ID: Matrix Spike Duplicate  
Prep Type: Total/NA

Analyte	Sample	Sample	Spike	MSD	MSD	Unit	D	%Rec	%Rec	Limits	RPD	RPD
	Result	Qualifier	Added	Result	Qualifier						RPD	Limit
Benzene	<0.00100	U	0.0500	0.04838		mg/L		97		66 - 142	3	25
Toluene	<0.00100	U	0.0500	0.04976		mg/L		100		59 - 139	1	25
Ethylbenzene	<0.00100	U	0.0500	0.05070		mg/L		101		75 - 125	2	25
m,p-Xylenes	<0.0100	U	0.0500	0.04960		mg/L		99		75 - 125	0	25
o-Xylene	<0.00100	U	0.0500	0.04976		mg/L		100		75 - 125	0	25
<b>MSD MSD</b>												
<b>Surrogate</b>	<b>%Recovery</b>	<b>Qualifier</b>	<b>Limits</b>									
1,2-Dichloroethane-d4 (Surr)	100		63 - 144									
4-Bromofluorobenzene (Surr)	97		74 - 124									
Dibromofluoromethane (Surr)	100		75 - 131									
Toluene-d8 (Surr)	101		80 - 120									

#### Method: 300.0 - Anions, Ion Chromatography

Lab Sample ID: MB 860-223754/3  
Matrix: Water  
Analysis Batch: 223754

Client Sample ID: Method Blank  
Prep Type: Total/NA

Analyte	MB	MB	RL	MDL	Unit	D	Prepared	Analyzed	Dil Fac
	Result	Qualifier							
Chloride	<0.500	U	0.500		mg/L			03/20/25 09:58	1

Lab Sample ID: MB 860-223754/68  
Matrix: Water  
Analysis Batch: 223754

Client Sample ID: Method Blank  
Prep Type: Total/NA

Analyte	MB	MB	RL	MDL	Unit	D	Prepared	Analyzed	Dil Fac
	Result	Qualifier							
Chloride	<0.500	U	0.500		mg/L			03/20/25 21:03	1

Eurofins Lubbock

### QC Sample Results

Client: NT Global  
Project/Site: NMGSAAU

Job ID: 820-17952-1  
SDG: Lea County New Mexico

#### Method: 300.0 - Anions, Ion Chromatography (Continued)

Lab Sample ID: LCS 860-223754/69  
Matrix: Water  
Analysis Batch: 223754

Client Sample ID: Lab Control Sample  
Prep Type: Total/NA

Analyte	Spike Added	LCS Result	LCS Qualifier	Unit	D	%Rec	%Rec Limits
Chloride	10.0	9.490		mg/L		95	90 - 110

Lab Sample ID: LCSD 860-223754/70  
Matrix: Water  
Analysis Batch: 223754

Client Sample ID: Lab Control Sample Dup  
Prep Type: Total/NA

Analyte	Spike Added	LCSD Result	LCSD Qualifier	Unit	D	%Rec	%Rec Limits	RPD	RPD Limit
Chloride	10.0	9.610		mg/L		96	90 - 110	1	20

Lab Sample ID: LLCS 860-223754/7  
Matrix: Water  
Analysis Batch: 223754

Client Sample ID: Lab Control Sample  
Prep Type: Total/NA

Analyte	Spike Added	LLCS Result	LLCS Qualifier	Unit	D	%Rec	%Rec Limits
Chloride	0.500	0.4770	J	mg/L		95	50 - 150

Lab Sample ID: 820-17953-E-2 MS  
Matrix: Water  
Analysis Batch: 223754

Client Sample ID: Matrix Spike  
Prep Type: Total/NA

Analyte	Sample Result	Sample Qualifier	Spike Added	MS Result	MS Qualifier	Unit	D	%Rec	%Rec Limits
Chloride	208		10.0	215.7	4	mg/L		79	90 - 110

Lab Sample ID: 820-17953-E-2 MSD  
Matrix: Water  
Analysis Batch: 223754

Client Sample ID: Matrix Spike Duplicate  
Prep Type: Total/NA

Analyte	Sample Result	Sample Qualifier	Spike Added	MSD Result	MSD Qualifier	Unit	D	%Rec	%Rec Limits	RPD	RPD Limit
Chloride	208		10.0	215.7	4	mg/L		79	90 - 110	0	15

## QC Association Summary

Client: NT Global  
Project/Site: NMGSAAU

Job ID: 820-17952-1  
SDG: Lea County New Mexico

## GC/MS VOA

## Analysis Batch: 223237

Lab Sample ID	Client Sample ID	Prep Type	Matrix	Method	Prep Batch
820-17952-1	TMW-1	Total/NA	Water	8260D	
820-17952-2	TMW-2	Total/NA	Water	8260D	
820-17952-3	MW-2	Total/NA	Water	8260D	
MB 860-223237/10	Method Blank	Total/NA	Water	8260D	
LCS 860-223237/3	Lab Control Sample	Total/NA	Water	8260D	
LCSD 860-223237/4	Lab Control Sample Dup	Total/NA	Water	8260D	
860-96005-B-10 MS	Matrix Spike	Total/NA	Water	8260D	
860-96005-B-10 MSD	Matrix Spike Duplicate	Total/NA	Water	8260D	

## Analysis Batch: 223956

Lab Sample ID	Client Sample ID	Prep Type	Matrix	Method	Prep Batch
820-17952-1	TMW-1	Total/NA	Water	Total BTEX	
820-17952-2	TMW-2	Total/NA	Water	Total BTEX	
820-17952-3	MW-2	Total/NA	Water	Total BTEX	

## HPLC/IC

## Analysis Batch: 223754

Lab Sample ID	Client Sample ID	Prep Type	Matrix	Method	Prep Batch
820-17952-1	TMW-1	Total/NA	Water	300.0	
820-17952-2	TMW-2	Total/NA	Water	300.0	
820-17952-3	MW-2	Total/NA	Water	300.0	
MB 860-223754/3	Method Blank	Total/NA	Water	300.0	
MB 860-223754/68	Method Blank	Total/NA	Water	300.0	
LCS 860-223754/69	Lab Control Sample	Total/NA	Water	300.0	
LCSD 860-223754/70	Lab Control Sample Dup	Total/NA	Water	300.0	
LLCS 860-223754/7	Lab Control Sample	Total/NA	Water	300.0	
820-17953-E-2 MS	Matrix Spike	Total/NA	Water	300.0	
820-17953-E-2 MSD	Matrix Spike Duplicate	Total/NA	Water	300.0	

### Lab Chronicle

Client: NT Global  
 Project/Site: NMGSAAU

Job ID: 820-17952-1  
 SDG: Lea County New Mexico

**Client Sample ID: TMW-1**  
 Date Collected: 03/14/25 12:30  
 Date Received: 03/17/25 13:53

**Lab Sample ID: 820-17952-1**  
 Matrix: Water

Prep Type	Batch Type	Batch Method	Run	Dil Factor	Initial Amount	Final Amount	Batch Number	Prepared or Analyzed	Analyst	Lab
Total/NA	Analysis	8260D		1	5 mL	5 mL	223237	03/19/25 05:55	T1S	EET HOU
Total/NA	Analysis	Total BTEX		1			223956	03/19/25 05:55	KLV	EET HOU
Total/NA	Analysis	300.0		1			223754	03/21/25 01:35	WP	EET HOU

**Client Sample ID: TMW-2**  
 Date Collected: 03/14/25 13:15  
 Date Received: 03/17/25 13:53

**Lab Sample ID: 820-17952-2**  
 Matrix: Water

Prep Type	Batch Type	Batch Method	Run	Dil Factor	Initial Amount	Final Amount	Batch Number	Prepared or Analyzed	Analyst	Lab
Total/NA	Analysis	8260D		1	5 mL	5 mL	223237	03/19/25 06:15	T1S	EET HOU
Total/NA	Analysis	Total BTEX		1			223956	03/19/25 06:15	KLV	EET HOU
Total/NA	Analysis	300.0		1			223754	03/21/25 01:55	WP	EET HOU

**Client Sample ID: MW-2**  
 Date Collected: 03/14/25 12:00  
 Date Received: 03/17/25 13:53

**Lab Sample ID: 820-17952-3**  
 Matrix: Water

Prep Type	Batch Type	Batch Method	Run	Dil Factor	Initial Amount	Final Amount	Batch Number	Prepared or Analyzed	Analyst	Lab
Total/NA	Analysis	8260D		1	5 mL	5 mL	223237	03/19/25 06:36	T1S	EET HOU
Total/NA	Analysis	Total BTEX		1			223956	03/19/25 06:36	KLV	EET HOU
Total/NA	Analysis	300.0		1			223754	03/21/25 02:15	WP	EET HOU

**Laboratory References:**

EET HOU = Eurofins Houston, 4145 Greenbriar Dr, Stafford, TX 77477, TEL (281)240-4200

### Accreditation/Certification Summary

Client: NT Global  
Project/Site: NMGSAAU

Job ID: 820-17952-1  
SDG: Lea County New Mexico

#### Laboratory: Eurofins Houston

Unless otherwise noted, all analytes for this laboratory were covered under each accreditation/certification below.

Authority	Program	Identification Number	Expiration Date								
Texas	NELAP	T104704215	07-01-26								
<p>The following analytes are included in this report, but the laboratory is not certified by the governing authority. This list may include analytes for which the agency does not offer certification.</p> <table border="1"> <thead> <tr> <th>Analysis Method</th> <th>Prep Method</th> <th>Matrix</th> <th>Analyte</th> </tr> </thead> <tbody> <tr> <td>Total BTEX</td> <td></td> <td>Water</td> <td>Total BTEX</td> </tr> </tbody> </table>				Analysis Method	Prep Method	Matrix	Analyte	Total BTEX		Water	Total BTEX
Analysis Method	Prep Method	Matrix	Analyte								
Total BTEX		Water	Total BTEX								

- 1
- 2
- 3
- 4
- 5
- 6
- 7
- 8
- 9
- 10
- 11
- 12
- 13
- 14

### Method Summary

Client: NT Global  
Project/Site: NMGSAAU

Job ID: 820-17952-1  
SDG: Lea County New Mexico

Method	Method Description	Protocol	Laboratory
8260D	Volatile Organic Compounds by GC/MS	SW846	EET HOU
Total BTEX	Total BTEX Calculation	TAL SOP	EET HOU
300.0	Anions, Ion Chromatography	EPA	EET HOU
5030C	Purge and Trap	SW846	EET HOU

**Protocol References:**

- EPA = US Environmental Protection Agency
- SW846 = "Test Methods For Evaluating Solid Waste, Physical/Chemical Methods", Third Edition, November 1986 And Its Updates.
- TAL SOP = TestAmerica Laboratories, Standard Operating Procedure

**Laboratory References:**

- EET HOU = Eurofins Houston, 4145 Greenbriar Dr, Stafford, TX 77477, TEL (281)240-4200



### Sample Summary

Client: NT Global  
Project/Site: NMGSAAU

Job ID: 820-17952-1  
SDG: Lea County New Mexico

---

Lab Sample ID	Client Sample ID	Matrix	Collected	Received
820-17952-1	TMW-1	Water	03/14/25 12:30	03/17/25 13:53
820-17952-2	TMW-2	Water	03/14/25 13:15	03/17/25 13:53
820-17952-3	MW-2	Water	03/14/25 12:00	03/17/25 13:53

- 1
- 2
- 3
- 4
- 5
- 6
- 7
- 8
- 9
- 10
- 11
- 12
- 13
- 14



- 1
- 2
- 3
- 4
- 5
- 6
- 7
- 8
- 9
- 10
- 11
- 12
- 13
- 14

### Eurofins Lubbock

6701 Aberdeen Ave, Suite 8  
 Lubbock, TX 79424  
 Phone: 806-794-1296

### Chain of Custody Record



**Client Information (Sub Contract Lab)**  
 Client Contact: **Kramer, Jessica**  
 Shipping/Receiving: **Jessica.Kramer@eurofins.com**  
 Company: **Eurofins Environment Testing South Center**  
 Address: **4145 Greenbriar Dr**  
 City: **TX, 77477**  
 State, Zip: **TX, 77477**  
 Phone: **281-240-4200(Tel)**  
 Email: **N/A**  
 Project Name: **NMGSAALU**  
 Project #: **88000222**  
 Site: **N/A**  
 SSOV#: **N/A**

Sampler: **N/A**  
 Lab P#: **Kramer, Jessica**  
 E-Mail: **Jessica.Kramer@eurofins.com**  
 Accrediations Required (See note): **NEIAP Texas**  
 Date Date Requested: **3/21/2025**  
 TAT Requested (days): **N/A**  
 Analysis Requested

Carrier Tracking No(s): **N/A**  
 State of Origin: **Texas**  
 Page: **820-10505\_1**  
 Page 1 of 1  
 Job #: **820-17952-1**  
 Preservation Codes:

Sample ID (Lab ID)	Sample Date	Sample Time	Sample Type (C=Comp, G=grab)	Matrix (Water, Solid, Over Soil, etc.)	Field Filtered Sample (Yes or No)	Perform MS/MSD (Yes or No)	Total BTEX	Total Number of containers	Special Instructions/Note:
TMW-1 (820-17952-1)	3/14/25	12:30	G	Water	X	X	X	4	
TMW-2 (820-17952-2)	3/14/25	13:15	G	Water	X	X	X	4	
MW-2 (820-17952-3)	3/14/25	12:00	G	Water	X	X	X	4	

**Possible Hazard Identification**  
 Note: Since laboratory accreditation is subject to change, Eurofins Environment Testing South Center, LLC places the ownership of method, analyte & accreditation compliance upon our subcontracted laboratories. This sample shipment is forwarded under chain-of-custody. If the laboratory does not currently maintain accreditation in the State of Origin listed above for analysis/substrate, being analyzed, the samples must be shipped back to the Eurofins Environment Testing South Center, LLC laboratory or other instructions will be provided. Any changes to accreditation status should be brought to Eurofins Environment Testing South Center, LLC attention immediately. If all requested accreditation are current to date, return the signed Chain of Custody attesting to said compliance to Eurofins Environment Testing South Center, LLC.

**Unconfirmed**  
 Deliverable Requested: I, II, III, IV Other (Specify) **Primary Deliverable Rank: 2**  
 Sample Disposal (A fee may be assessed if samples are retained longer than 1 month)  
 Return To Client  Disposal By Lab  Archive For **Months**

Empty Kit Requisitioned by: **[Signature]** Date: **3/17/25** Time: **17:00**  
 Requisitioned by: **[Signature]** Date/Time: **3/17/25** Company: **[Signature]**

Requisitioned by: **[Signature]** Date/Time: **3/18/25** Company: **[Signature]**

Custody Seals Intact: **A Yes Δ No** Custody Seal No. **10355**  
 Cooler Temperature(s) °C and Other Remarks: **2.0**

Received by: **[Signature]** Date/Time: **3/21/25** Company: **[Signature]**  
 Received by: **[Signature]** Date/Time: **3/21/25** Company: **[Signature]**

### Login Sample Receipt Checklist

Client: NT Global

Job Number: 820-17952-1  
SDG Number: Lea County New Mexico

**Login Number: 17952**  
**List Number: 1**  
**Creator: Guillen, Kyrstin**

**List Source: Eurofins Lubbock**

Question	Answer	Comment
The cooler's custody seal, if present, is intact.	N/A	
Sample custody seals, if present, are intact.	N/A	
The cooler or samples do not appear to have been compromised or tampered with.	True	
Samples were received on ice.	True	
Cooler Temperature is acceptable.	True	
Cooler Temperature is recorded.	True	
COC is present.	True	
COC is filled out in ink and legible.	True	
COC is filled out with all pertinent information.	True	
Is the Field Sampler's name present on COC?	True	
There are no discrepancies between the containers received and the COC.	True	
Samples are received within Holding Time (excluding tests with immediate HTs)	True	
Sample containers have legible labels.	True	
Containers are not broken or leaking.	True	
Sample collection date/times are provided.	True	
Appropriate sample containers are used.	True	
Sample bottles are completely filled.	True	
Sample Preservation Verified.	True	
There is sufficient vol. for all requested analyses, incl. any requested MS/MSDs	True	
Containers requiring zero headspace have no headspace or bubble is <6mm (1/4").	N/A	

- 1
- 2
- 3
- 4
- 5
- 6
- 7
- 8
- 9
- 10
- 11
- 12
- 13
- 14

### Login Sample Receipt Checklist

Client: NT Global

Job Number: 820-17952-1  
SDG Number: Lea County New Mexico

**Login Number: 17952**  
**List Number: 2**  
**Creator: Torrez, Lisandra**

**List Source: Eurofins Houston**  
**List Creation: 03/18/25 11:55 AM**

Question	Answer	Comment
The cooler's custody seal, if present, is intact.	True	
Sample custody seals, if present, are intact.	N/A	
The cooler or samples do not appear to have been compromised or tampered with.	True	
Samples were received on ice.	True	
Cooler Temperature is acceptable.	True	
Cooler Temperature is recorded.	True	
COC is present.	True	
COC is filled out in ink and legible.	True	
COC is filled out with all pertinent information.	True	
Is the Field Sampler's name present on COC?	True	
There are no discrepancies between the containers received and the COC.	True	
Samples are received within Holding Time (excluding tests with immediate HTs)	True	
Sample containers have legible labels.	True	
Containers are not broken or leaking.	True	
Sample collection date/times are provided.	True	
Appropriate sample containers are used.	True	
Sample bottles are completely filled.	True	
Sample Preservation Verified.	True	
There is sufficient vol. for all requested analyses, incl. any requested MS/MSDs	True	
Containers requiring zero headspace have no headspace or bubble is <6mm (1/4").	True	

- 1
- 2
- 3
- 4
- 5
- 6
- 7
- 8
- 9
- 10
- 11
- 12
- 13
- 14



Environment Testing

- 1
- 2
- 3
- 4
- 5
- 6
- 7
- 8
- 9
- 10
- 11
- 12
- 13
- 14

# ANALYTICAL REPORT

## PREPARED FOR

Attn: Jeff Kindley  
NT Global

701 Tradewinds Blvd  
Midland, Texas 79706

Generated 9/26/2025 10:01:25 AM Revision 1

## JOB DESCRIPTION

NMGSAU 2102  
259810

## JOB NUMBER

820-21075-1

Eurofins Lubbock  
6701 Aberdeen Ave.  
Suite 8  
Lubbock TX 79424



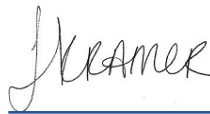
# Eurofins Lubbock

## Job Notes

This report may not be reproduced except in full, and with written approval from the laboratory. The results relate only to the samples tested. For questions please contact the Project Manager at the e-mail address or telephone number listed on this page.

The test results in this report relate only to the samples as received by the laboratory and will meet all requirements of the methodology, with any exceptions noted. This report shall not be reproduced except in full, without the express written approval of the laboratory. All questions should be directed to the Eurofins Environment Testing South Central, LLC Project Manager.

## Authorization



Generated  
9/26/2025 10:01:25 AM  
Revision 1

Authorized for release by  
Jessica Kramer, Project Manager  
[Jessica.Kramer@et.eurofinsus.com](mailto:Jessica.Kramer@et.eurofinsus.com)  
(432)704-5440

Client: NT Global  
Project/Site: NMGSAU 2102

Laboratory Job ID: 820-21075-1  
SDG: 259810

# Table of Contents

Cover Page . . . . .	1
Table of Contents . . . . .	3
Definitions/Glossary . . . . .	4
Case Narrative . . . . .	5
Client Sample Results . . . . .	6
Surrogate Summary . . . . .	8
QC Sample Results . . . . .	9
QC Association Summary . . . . .	12
Lab Chronicle . . . . .	13
Certification Summary . . . . .	14
Method Summary . . . . .	15
Sample Summary . . . . .	16
Chain of Custody . . . . .	17
Receipt Checklists . . . . .	19

- 1
- 2
- 3
- 4
- 5
- 6
- 7
- 8
- 9
- 10
- 11
- 12
- 13
- 14

## Definitions/Glossary

Client: NT Global  
Project/Site: NMGSAU 2102

Job ID: 820-21075-1  
SDG: 259810

## Qualifiers

## GC VOA

Qualifier	Qualifier Description
*-	LCS and/or LCSD is outside acceptance limits, low biased.
U	Indicates the analyte was analyzed for but not detected.

## HPLC/IC

Qualifier	Qualifier Description
F1	MS and/or MSD recovery exceeds control limits.
U	Indicates the analyte was analyzed for but not detected.

## Glossary

Abbreviation	These commonly used abbreviations may or may not be present in this report.
☼	Listed under the "D" column to designate that the result is reported on a dry weight basis
%R	Percent Recovery
CFL	Contains Free Liquid
CFU	Colony Forming Unit
CNF	Contains No Free Liquid
DER	Duplicate Error Ratio (normalized absolute difference)
Dil Fac	Dilution Factor
DL	Detection Limit (DoD/DOE)
DL, RA, RE, IN	Indicates a Dilution, Re-analysis, Re-extraction, or additional Initial metals/anion analysis of the sample
DLC	Decision Level Concentration (Radiochemistry)
EDL	Estimated Detection Limit (Dioxin)
LOD	Limit of Detection (DoD/DOE)
LOQ	Limit of Quantitation (DoD/DOE)
MCL	EPA recommended "Maximum Contaminant Level"
MDA	Minimum Detectable Activity (Radiochemistry)
MDC	Minimum Detectable Concentration (Radiochemistry)
MDL	Method Detection Limit
ML	Minimum Level (Dioxin)
MPN	Most Probable Number
MQL	Method Quantitation Limit
NC	Not Calculated
ND	Not Detected at the reporting limit (or MDL or EDL if shown)
NEG	Negative / Absent
POS	Positive / Present
PQL	Practical Quantitation Limit
PRES	Presumptive
QC	Quality Control
RER	Relative Error Ratio (Radiochemistry)
RL	Reporting Limit or Requested Limit (Radiochemistry)
RPD	Relative Percent Difference, a measure of the relative difference between two points
TEF	Toxicity Equivalent Factor (Dioxin)
TEQ	Toxicity Equivalent Quotient (Dioxin)
TNTC	Too Numerous To Count

## Case Narrative

Client: NT Global  
Project: NMGSAU 2102

Job ID: 820-21075-1

**Job ID: 820-21075-1**

**Eurofins Lubbock**

### Job Narrative 820-21075-1

#### REVISION

The report being provided is a revision of the original report sent on 9/25/2025. The report (revision 1) is being revised due to Per client email, requesting TDS to be removed.

The analytical test results presented in this report meet all requirements of the associated regulatory program listed on the Accreditation/Certification Summary Page, unless otherwise noted. Data qualifiers and/or narrative comments are included to explain any exceptions, if applicable. Regulated compliance samples (e.g. SDWA, NPDES) must comply with associated agency requirements/permits.

- Matrix-specific batch QC (e.g., MS, MSD, SD) may not be reported when insufficient sample volume is available or when site-specific QC samples are not submitted. In such cases, a Laboratory Control Sample Duplicate (LCSD) may be analyzed to provide precision data for the batch.
- For samples analyzed using surrogate and/or isotope dilution analytes, any recoveries falling outside of established acceptance criteria are re-prepared and/or re-analyzed to confirm results, unless the deviation is due to sample dilution or otherwise explained in the case narrative.

#### **Receipt**

The samples were received on 9/19/2025 4:59 PM. Unless otherwise noted below, the samples arrived in good condition, and, where required, properly preserved and on ice. The temperature of the cooler at receipt time was 2.2°C.

#### **GC VOA**

Method 8021B: The laboratory control sample (LCS) associated with analytical batch 880-119630 was outside acceptance criteria. Re-extraction and/or re-analysis could not be performed; therefore, the data have been reported. The batch matrix spike/matrix spike duplicate (MS/MSD) was within acceptance limits and may be used to evaluate matrix performance.

Method 8021B: Surrogate recovery for the following samples were outside control limits: (CCV 880-119630/20) and (CCV 880-119630/33). Evidence of matrix interference is present; therefore, re-extraction and/or re-analysis was not performed.

No additional analytical or quality issues were noted, other than those described above or in the Definitions/ Glossary page.

#### **HPLC/IC**

Method 300\_ORGFM\_28D: The matrix spike / matrix spike duplicate (MS/MSD) recoveries for analytical batch 880-119609 were outside control limits for one or more analytes. See QC Sample Results for detail. Sample matrix interference and/or non-homogeneity are suspected because the associated laboratory control sample (LCS) recovery is within acceptance limits.

No additional analytical or quality issues were noted, other than those described above or in the Definitions/ Glossary page.

#### **General Chemistry**

No additional analytical or quality issues were noted, other than those described above or in the Definitions/ Glossary page.

Eurofins Lubbock

### Client Sample Results

Client: NT Global  
Project/Site: NMGS AU 2102

Job ID: 820-21075-1  
SDG: 259810

**Client Sample ID: MW-2**  
Date Collected: 09/17/25 10:00  
Date Received: 09/19/25 16:59

**Lab Sample ID: 820-21075-1**  
Matrix: Water

**Method: SW846 8021B - Volatile Organic Compounds (GC)**

Analyte	Result	Qualifier	RL	MDL	Unit	D	Prepared	Analyzed	Dil Fac
Benzene	<0.00200	U *	0.00200		mg/L			09/24/25 18:51	1
Toluene	<0.00200	U	0.00200		mg/L			09/24/25 18:51	1
Ethylbenzene	<0.00200	U	0.00200		mg/L			09/24/25 18:51	1
m-Xylene & p-Xylene	<0.00400	U	0.00400		mg/L			09/24/25 18:51	1
o-Xylene	<0.00200	U	0.00200		mg/L			09/24/25 18:51	1
Xylenes, Total	<0.00400	U	0.00400		mg/L			09/24/25 18:51	1

Surrogate	%Recovery	Qualifier	Limits	Prepared	Analyzed	Dil Fac
4-Bromofluorobenzene (Surr)	126		70 - 130		09/24/25 18:51	1
1,4-Difluorobenzene (Surr)	94		70 - 130		09/24/25 18:51	1

**Method: TAL SOP Total BTEX - Total BTEX Calculation**

Analyte	Result	Qualifier	RL	MDL	Unit	D	Prepared	Analyzed	Dil Fac
Total BTEX	<0.00400	U	0.00400		mg/L			09/24/25 18:51	1

**Method: EPA 300.0 - Anions, Ion Chromatography**

Analyte	Result	Qualifier	RL	MDL	Unit	D	Prepared	Analyzed	Dil Fac
Chloride	207		2.50		mg/L			09/23/25 22:44	5

**Client Sample ID: TMW-1**  
Date Collected: 09/17/25 10:30  
Date Received: 09/19/25 16:59

**Lab Sample ID: 820-21075-2**  
Matrix: Water

**Method: SW846 8021B - Volatile Organic Compounds (GC)**

Analyte	Result	Qualifier	RL	MDL	Unit	D	Prepared	Analyzed	Dil Fac
Benzene	<0.00200	U *	0.00200		mg/L			09/24/25 19:11	1
Toluene	<0.00200	U	0.00200		mg/L			09/24/25 19:11	1
Ethylbenzene	<0.00200	U	0.00200		mg/L			09/24/25 19:11	1
m-Xylene & p-Xylene	<0.00400	U	0.00400		mg/L			09/24/25 19:11	1
o-Xylene	<0.00200	U	0.00200		mg/L			09/24/25 19:11	1
Xylenes, Total	<0.00400	U	0.00400		mg/L			09/24/25 19:11	1

Surrogate	%Recovery	Qualifier	Limits	Prepared	Analyzed	Dil Fac
4-Bromofluorobenzene (Surr)	117		70 - 130		09/24/25 19:11	1
1,4-Difluorobenzene (Surr)	92		70 - 130		09/24/25 19:11	1

**Method: TAL SOP Total BTEX - Total BTEX Calculation**

Analyte	Result	Qualifier	RL	MDL	Unit	D	Prepared	Analyzed	Dil Fac
Total BTEX	<0.00400	U	0.00400		mg/L			09/24/25 19:11	1

**Method: EPA 300.0 - Anions, Ion Chromatography**

Analyte	Result	Qualifier	RL	MDL	Unit	D	Prepared	Analyzed	Dil Fac
Chloride	230		2.50		mg/L			09/23/25 22:49	5

**Client Sample ID: TMW-2**  
Date Collected: 09/17/25 11:00  
Date Received: 09/19/25 16:59

**Lab Sample ID: 820-21075-3**  
Matrix: Water

**Method: SW846 8021B - Volatile Organic Compounds (GC)**

Analyte	Result	Qualifier	RL	MDL	Unit	D	Prepared	Analyzed	Dil Fac
Benzene	<0.00200	U *	0.00200		mg/L			09/24/25 19:32	1
Toluene	<0.00200	U	0.00200		mg/L			09/24/25 19:32	1

Eurofins Lubbock

### Client Sample Results

Client: NT Global  
 Project/Site: NMGSAU 2102

Job ID: 820-21075-1  
 SDG: 259810

**Client Sample ID: TMW-2**  
**Date Collected: 09/17/25 11:00**  
**Date Received: 09/19/25 16:59**

**Lab Sample ID: 820-21075-3**  
**Matrix: Water**

**Method: SW846 8021B - Volatile Organic Compounds (GC) (Continued)**

Analyte	Result	Qualifier	RL	MDL	Unit	D	Prepared	Analyzed	Dil Fac
Ethylbenzene	<0.00200	U	0.00200		mg/L			09/24/25 19:32	1
m-Xylene & p-Xylene	<0.00400	U	0.00400		mg/L			09/24/25 19:32	1
o-Xylene	<0.00200	U	0.00200		mg/L			09/24/25 19:32	1
Xylenes, Total	<0.00400	U	0.00400		mg/L			09/24/25 19:32	1
<b>Surrogate</b>	<b>%Recovery</b>	<b>Qualifier</b>	<b>Limits</b>				<b>Prepared</b>	<b>Analyzed</b>	<b>Dil Fac</b>
4-Bromofluorobenzene (Surr)	124		70 - 130					09/24/25 19:32	1
1,4-Difluorobenzene (Surr)	89		70 - 130					09/24/25 19:32	1

**Method: TAL SOP Total BTEX - Total BTEX Calculation**

Analyte	Result	Qualifier	RL	MDL	Unit	D	Prepared	Analyzed	Dil Fac
Total BTEX	<0.00400	U	0.00400		mg/L			09/24/25 19:32	1

**Method: EPA 300.0 - Anions, Ion Chromatography**

Analyte	Result	Qualifier	RL	MDL	Unit	D	Prepared	Analyzed	Dil Fac
Chloride	308		5.00		mg/L			09/23/25 22:54	10

# Surrogate Summary

Client: NT Global  
 Project/Site: NMGSAU 2102

Job ID: 820-21075-1  
 SDG: 259810

**Method: 8021B - Volatile Organic Compounds (GC)**

**Matrix: Water**

**Prep Type: Total/NA**

**Percent Surrogate Recovery (Acceptance Limits)**

Lab Sample ID	Client Sample ID	BFB1	DFBZ1
		(70-130)	(70-130)
820-21075-1	MW-2	126	94
820-21075-2	TMW-1	117	92
820-21075-3	TMW-2	124	89
880-62992-C-1 MS	Matrix Spike	115	90
880-62992-C-1 MSD	Matrix Spike Duplicate	126	97
LCS 880-119630/3	Lab Control Sample	125	105
LCSD 880-119630/4	Lab Control Sample Dup	118	94
MB 880-119630/8	Method Blank	126	93

**Surrogate Legend**

BFB = 4-Bromofluorobenzene (Surr)

DFBZ = 1,4-Difluorobenzene (Surr)

- 1
- 2
- 3
- 4
- 5
- 6
- 7
- 8
- 9
- 10
- 11
- 12
- 13
- 14

### QC Sample Results

Client: NT Global  
Project/Site: NMGSAU 2102

Job ID: 820-21075-1  
SDG: 259810

#### Method: 8021B - Volatile Organic Compounds (GC)

Lab Sample ID: MB 880-119630/8  
Matrix: Water  
Analysis Batch: 119630

Client Sample ID: Method Blank  
Prep Type: Total/NA

Analyte	MB Result	MB Qualifier	RL	MDL	Unit	D	Prepared	Analyzed	Dil Fac
Benzene	<0.00200	U	0.00200		mg/L			09/24/25 11:49	1
Toluene	<0.00200	U	0.00200		mg/L			09/24/25 11:49	1
Ethylbenzene	<0.00200	U	0.00200		mg/L			09/24/25 11:49	1
m-Xylene & p-Xylene	<0.00400	U	0.00400		mg/L			09/24/25 11:49	1
o-Xylene	<0.00200	U	0.00200		mg/L			09/24/25 11:49	1
Xylenes, Total	<0.00400	U	0.00400		mg/L			09/24/25 11:49	1

Surrogate	MB %Recovery	MB Qualifier	Limits	Prepared	Analyzed	Dil Fac
4-Bromofluorobenzene (Surr)	126		70 - 130		09/24/25 11:49	1
1,4-Difluorobenzene (Surr)	93		70 - 130		09/24/25 11:49	1

Lab Sample ID: LCS 880-119630/3  
Matrix: Water  
Analysis Batch: 119630

Client Sample ID: Lab Control Sample  
Prep Type: Total/NA

Analyte	Spike Added	LCS Result	LCS Qualifier	Unit	D	%Rec	%Rec Limits
Benzene	0.100	0.06693	*-	mg/L		67	70 - 130
Toluene	0.100	0.08055		mg/L		81	70 - 130
Ethylbenzene	0.100	0.08432		mg/L		84	70 - 130
m-Xylene & p-Xylene	0.200	0.1754		mg/L		88	70 - 130
o-Xylene	0.100	0.09080		mg/L		91	70 - 130

Surrogate	LCS %Recovery	LCS Qualifier	Limits
4-Bromofluorobenzene (Surr)	125		70 - 130
1,4-Difluorobenzene (Surr)	105		70 - 130

Lab Sample ID: LCSD 880-119630/4  
Matrix: Water  
Analysis Batch: 119630

Client Sample ID: Lab Control Sample Dup  
Prep Type: Total/NA

Analyte	Spike Added	LCSD Result	LCSD Qualifier	Unit	D	%Rec	%Rec Limits	RPD	RPD Limit
Benzene	0.100	0.05898	*-	mg/L		59	70 - 130	13	20
Toluene	0.100	0.07467		mg/L		75	70 - 130	8	20
Ethylbenzene	0.100	0.07703		mg/L		77	70 - 130	9	20
m-Xylene & p-Xylene	0.200	0.1620		mg/L		81	70 - 130	8	20
o-Xylene	0.100	0.08438		mg/L		84	70 - 130	7	20

Surrogate	LCSD %Recovery	LCSD Qualifier	Limits
4-Bromofluorobenzene (Surr)	118		70 - 130
1,4-Difluorobenzene (Surr)	94		70 - 130

Lab Sample ID: 880-62992-C-1 MS  
Matrix: Water  
Analysis Batch: 119630

Client Sample ID: Matrix Spike  
Prep Type: Total/NA

Analyte	Sample Result	Sample Qualifier	Spike Added	MS Result	MS Qualifier	Unit	D	%Rec	%Rec Limits
Benzene	<0.00200	U *-	0.100	0.09159		mg/L		92	70 - 130
Toluene	<0.00200	U	0.100	0.09641		mg/L		96	70 - 130

Eurofins Lubbock

### QC Sample Results

Client: NT Global  
Project/Site: NMGSAU 2102

Job ID: 820-21075-1  
SDG: 259810

#### Method: 8021B - Volatile Organic Compounds (GC) (Continued)

Lab Sample ID: 880-62992-C-1 MS  
Matrix: Water  
Analysis Batch: 119630

Client Sample ID: Matrix Spike  
Prep Type: Total/NA

Analyte	Sample Result	Sample Qualifier	Spike Added	MS Result	MS Qualifier	Unit	D	%Rec	%Rec Limits
Ethylbenzene	<0.00200	U	0.100	0.09653		mg/L		97	70 - 130
m-Xylene & p-Xylene	<0.00400	U	0.200	0.1950		mg/L		97	70 - 130
o-Xylene	<0.00200	U	0.100	0.09928		mg/L		99	70 - 130

Surrogate	MS %Recovery	MS Qualifier	MS Limits
4-Bromofluorobenzene (Surr)	115		70 - 130
1,4-Difluorobenzene (Surr)	90		70 - 130

Lab Sample ID: 880-62992-C-1 MSD  
Matrix: Water  
Analysis Batch: 119630

Client Sample ID: Matrix Spike Duplicate  
Prep Type: Total/NA

Analyte	Sample Result	Sample Qualifier	Spike Added	MSD Result	MSD Qualifier	Unit	D	%Rec	%Rec Limits	RPD	RPD Limit
Benzene	<0.00200	U *	0.100	0.08428		mg/L		84	70 - 130	8	25
Toluene	<0.00200	U	0.100	0.1018		mg/L		102	70 - 130	5	25
Ethylbenzene	<0.00200	U	0.100	0.1059		mg/L		106	70 - 130	9	25
m-Xylene & p-Xylene	<0.00400	U	0.200	0.2201		mg/L		110	70 - 130	12	25
o-Xylene	<0.00200	U	0.100	0.1116		mg/L		112	70 - 130	12	25

Surrogate	MSD %Recovery	MSD Qualifier	MSD Limits
4-Bromofluorobenzene (Surr)	126		70 - 130
1,4-Difluorobenzene (Surr)	97		70 - 130

#### Method: 300.0 - Anions, Ion Chromatography

Lab Sample ID: MB 880-119609/3  
Matrix: Water  
Analysis Batch: 119609

Client Sample ID: Method Blank  
Prep Type: Total/NA

Analyte	MB Result	MB Qualifier	RL	MDL	Unit	D	Prepared	Analyzed	Dil Fac
Chloride	<0.500	U	0.500		mg/L			09/23/25 21:36	1

Lab Sample ID: LCS 880-119609/4  
Matrix: Water  
Analysis Batch: 119609

Client Sample ID: Lab Control Sample  
Prep Type: Total/NA

Analyte	Spike Added	LCS Result	LCS Qualifier	Unit	D	%Rec	%Rec Limits
Chloride	25.0	25.02		mg/L		100	90 - 110

Lab Sample ID: LCSD 880-119609/5  
Matrix: Water  
Analysis Batch: 119609

Client Sample ID: Lab Control Sample Dup  
Prep Type: Total/NA

Analyte	Spike Added	LCSD Result	LCSD Qualifier	Unit	D	%Rec	%Rec Limits	RPD	RPD Limit
Chloride	25.0	25.15		mg/L		101	90 - 110	1	20

Eurofins Lubbock

### QC Sample Results

Client: NT Global  
 Project/Site: NMGSAU 2102

Job ID: 820-21075-1  
 SDG: 259810

**Method: 300.0 - Anions, Ion Chromatography (Continued)**

**Lab Sample ID: 820-21069-B-1 MS**  
**Matrix: Water**  
**Analysis Batch: 119609**

**Client Sample ID: Matrix Spike**  
**Prep Type: Total/NA**

Analyte	Sample Result	Sample Qualifier	Spike Added	MS Result	MS Qualifier	Unit	D	%Rec	%Rec Limits
Chloride	897	F1	500	1819	F1	mg/L		185	90 - 110

**Lab Sample ID: 820-21069-B-1 MSD**  
**Matrix: Water**  
**Analysis Batch: 119609**

**Client Sample ID: Matrix Spike Duplicate**  
**Prep Type: Total/NA**

Analyte	Sample Result	Sample Qualifier	Spike Added	MSD Result	MSD Qualifier	Unit	D	%Rec	%Rec Limits	RPD	RPD Limit
Chloride	897	F1	500	1828	F1	mg/L		186	90 - 110	0	20

- 1
- 2
- 3
- 4
- 5
- 6
- 7
- 8
- 9
- 10
- 11
- 12
- 13
- 14

## QC Association Summary

Client: NT Global  
Project/Site: NMGSAU 2102

Job ID: 820-21075-1  
SDG: 259810

## GC VOA

## Analysis Batch: 119630

Lab Sample ID	Client Sample ID	Prep Type	Matrix	Method	Prep Batch
820-21075-1	MW-2	Total/NA	Water	8021B	
820-21075-2	TMW-1	Total/NA	Water	8021B	
820-21075-3	TMW-2	Total/NA	Water	8021B	
MB 880-119630/8	Method Blank	Total/NA	Water	8021B	
LCS 880-119630/3	Lab Control Sample	Total/NA	Water	8021B	
LCSD 880-119630/4	Lab Control Sample Dup	Total/NA	Water	8021B	
880-62992-C-1 MS	Matrix Spike	Total/NA	Water	8021B	
880-62992-C-1 MSD	Matrix Spike Duplicate	Total/NA	Water	8021B	

## Analysis Batch: 119791

Lab Sample ID	Client Sample ID	Prep Type	Matrix	Method	Prep Batch
820-21075-1	MW-2	Total/NA	Water	Total BTEX	
820-21075-2	TMW-1	Total/NA	Water	Total BTEX	
820-21075-3	TMW-2	Total/NA	Water	Total BTEX	

## HPLC/IC

## Analysis Batch: 119609

Lab Sample ID	Client Sample ID	Prep Type	Matrix	Method	Prep Batch
820-21075-1	MW-2	Total/NA	Water	300.0	
820-21075-2	TMW-1	Total/NA	Water	300.0	
820-21075-3	TMW-2	Total/NA	Water	300.0	
MB 880-119609/3	Method Blank	Total/NA	Water	300.0	
LCS 880-119609/4	Lab Control Sample	Total/NA	Water	300.0	
LCSD 880-119609/5	Lab Control Sample Dup	Total/NA	Water	300.0	
820-21069-B-1 MS	Matrix Spike	Total/NA	Water	300.0	
820-21069-B-1 MSD	Matrix Spike Duplicate	Total/NA	Water	300.0	

### Lab Chronicle

Client: NT Global  
 Project/Site: NMGSAU 2102

Job ID: 820-21075-1  
 SDG: 259810

**Client Sample ID: MW-2**  
**Date Collected: 09/17/25 10:00**  
**Date Received: 09/19/25 16:59**

**Lab Sample ID: 820-21075-1**  
**Matrix: Water**

Prep Type	Batch Type	Batch Method	Run	Dil Factor	Initial Amount	Final Amount	Batch Number	Prepared or Analyzed	Analyst	Lab
Total/NA	Analysis	8021B		1	5 mL	5 mL	119630	09/24/25 18:51	MNR	EET MID
Total/NA	Analysis	Total BTEX		1			119791	09/24/25 18:51	AJ	EET MID
Total/NA	Analysis	300.0		5	10 mL	10 mL	119609	09/23/25 22:44	CS	EET MID

**Client Sample ID: TMW-1**  
**Date Collected: 09/17/25 10:30**  
**Date Received: 09/19/25 16:59**

**Lab Sample ID: 820-21075-2**  
**Matrix: Water**

Prep Type	Batch Type	Batch Method	Run	Dil Factor	Initial Amount	Final Amount	Batch Number	Prepared or Analyzed	Analyst	Lab
Total/NA	Analysis	8021B		1	5 mL	5 mL	119630	09/24/25 19:11	MNR	EET MID
Total/NA	Analysis	Total BTEX		1			119791	09/24/25 19:11	AJ	EET MID
Total/NA	Analysis	300.0		5	10 mL	10 mL	119609	09/23/25 22:49	CS	EET MID

**Client Sample ID: TMW-2**  
**Date Collected: 09/17/25 11:00**  
**Date Received: 09/19/25 16:59**

**Lab Sample ID: 820-21075-3**  
**Matrix: Water**

Prep Type	Batch Type	Batch Method	Run	Dil Factor	Initial Amount	Final Amount	Batch Number	Prepared or Analyzed	Analyst	Lab
Total/NA	Analysis	8021B		1	5 mL	5 mL	119630	09/24/25 19:32	MNR	EET MID
Total/NA	Analysis	Total BTEX		1			119791	09/24/25 19:32	AJ	EET MID
Total/NA	Analysis	300.0		10	10 mL	10 mL	119609	09/23/25 22:54	CS	EET MID

**Laboratory References:**

EET MID = Eurofins Midland, 1211 W. Florida Ave, Midland, TX 79701, TEL (432)704-5440

# Accreditation/Certification Summary

Client: NT Global  
Project/Site: NMGSAU 2102

Job ID: 820-21075-1  
SDG: 259810

## Laboratory: Eurofins Midland

Unless otherwise noted, all analytes for this laboratory were covered under each accreditation/certification below.

Authority	Program	Identification Number	Expiration Date
Texas	NELAP	T104704400	06-30-26

The following analytes are included in this report, but the laboratory is not certified by the governing authority. This list may include analytes for which the agency does not offer certification.

Analysis Method	Prep Method	Matrix	Analyte
Total BTEX		Water	Total BTEX

- 1
- 2
- 3
- 4
- 5
- 6
- 7
- 8
- 9
- 10
- 11
- 12
- 13
- 14

# Method Summary

Client: NT Global  
Project/Site: NMGSAU 2102

Job ID: 820-21075-1  
SDG: 259810

Method	Method Description	Protocol	Laboratory
8021B	Volatile Organic Compounds (GC)	SW846	EET MID
Total BTEX	Total BTEX Calculation	TAL SOP	EET MID
300.0	Anions, Ion Chromatography	EPA	EET MID
5030B	Purge and Trap	SW846	EET MID

**Protocol References:**

EPA = US Environmental Protection Agency

SW846 = "Test Methods For Evaluating Solid Waste, Physical/Chemical Methods", Third Edition, November 1986 And Its Updates.

TAL SOP = TestAmerica Laboratories, Standard Operating Procedure

**Laboratory References:**

EET MID = Eurofins Midland, 1211 W. Florida Ave, Midland, TX 79701, TEL (432)704-5440

- 1
- 2
- 3
- 4
- 5
- 6
- 7
- 8
- 9
- 10
- 11
- 12
- 13
- 14

# Sample Summary

Client: NT Global  
Project/Site: NMGSAU 2102

Job ID: 820-21075-1  
SDG: 259810

Lab Sample ID	Client Sample ID	Matrix	Collected	Received	Sample Origin
820-21075-1	MW-2	Water	09/17/25 10:00	09/19/25 16:59	Texas
820-21075-2	TMW-1	Water	09/17/25 10:30	09/19/25 16:59	Texas
820-21075-3	TMW-2	Water	09/17/25 11:00	09/19/25 16:59	Texas

- 1
- 2
- 3
- 4
- 5
- 6
- 7
- 8
- 9
- 10
- 11
- 12
- 13
- 14





### Login Sample Receipt Checklist

Client: NT Global

Job Number: 820-21075-1

SDG Number: 259810

Login Number: 21075

List Number: 1

Creator: Guillen, Kyrstin

List Source: Eurofins Lubbock

Question	Answer	Comment
The cooler's custody seal, if present, is intact.	N/A	
Sample custody seals, if present, are intact.	N/A	
The cooler or samples do not appear to have been compromised or tampered with.	True	
Samples were received on ice.	True	
Cooler Temperature is acceptable.	True	
Cooler Temperature is recorded.	True	
COC is present.	True	
COC is filled out in ink and legible.	True	
COC is filled out with all pertinent information.	True	
Is the Field Sampler's name present on COC?	True	
There are no discrepancies between the containers received and the COC.	True	
Samples are received within Holding Time (excluding tests with immediate HTs)	True	
Sample containers have legible labels.	True	
Containers are not broken or leaking.	True	
Sample collection date/times are provided.	True	
Appropriate sample containers are used.	True	
Sample bottles are completely filled.	True	
Sample Preservation Verified.	True	
There is sufficient vol. for all requested analyses, incl. any requested MS/MSDs	True	
Containers requiring zero headspace have no headspace or bubble is <6mm (1/4").	True	

- 1
- 2
- 3
- 4
- 5
- 6
- 7
- 8
- 9
- 10
- 11
- 12
- 13
- 14

### Login Sample Receipt Checklist

Client: NT Global

Job Number: 820-21075-1

SDG Number: 259810

**Login Number: 21075**

**List Number: 2**

**Creator: Torrez, Lisandra**

**List Source: Eurofins Houston**

**List Creation: 09/23/25 11:39 AM**

Question	Answer	Comment
The cooler's custody seal, if present, is intact.	True	
Sample custody seals, if present, are intact.	N/A	
The cooler or samples do not appear to have been compromised or tampered with.	True	
Samples were received on ice.	True	
Cooler Temperature is acceptable.	True	
Cooler Temperature is recorded.	True	
COC is present.	True	
COC is filled out in ink and legible.	True	
COC is filled out with all pertinent information.	True	
Is the Field Sampler's name present on COC?	True	
There are no discrepancies between the containers received and the COC.	True	
Samples are received within Holding Time (excluding tests with immediate HTs)	True	
Sample containers have legible labels.	True	
Containers are not broken or leaking.	True	
Sample collection date/times are provided.	True	
Appropriate sample containers are used.	True	
Sample bottles are completely filled.	True	
Sample Preservation Verified.	True	
There is sufficient vol. for all requested analyses, incl. any requested MS/MSDs	True	
Containers requiring zero headspace have no headspace or bubble is <6mm (1/4").	True	

- 1
- 2
- 3
- 4
- 5
- 6
- 7
- 8
- 9
- 10
- 11
- 12
- 13
- 14

### Login Sample Receipt Checklist

Client: NT Global

Job Number: 820-21075-1

SDG Number: 259810

**Login Number: 21075**

**List Number: 3**

**Creator: Vasquez, Julisa**

**List Source: Eurofins Midland**

**List Creation: 09/23/25 02:07 PM**

Question	Answer	Comment
The cooler's custody seal, if present, is intact.	N/A	
Sample custody seals, if present, are intact.	N/A	
The cooler or samples do not appear to have been compromised or tampered with.	True	
Samples were received on ice.	True	
Cooler Temperature is acceptable.	True	
Cooler Temperature is recorded.	True	
COC is present	True	
COC is filled out in ink and legible.	True	
COC is filled out with all pertinent information	True	
Is the Field Sampler's name present on COC?	True	
There are no discrepancies between the containers received and the COC.	True	
Samples are received within Holding Time (excluding tests with immediate HTs)	True	
Sample containers have legible labels.	True	
Containers are not broken or leaking.	True	
Sample collection date/times are provided.	True	
Appropriate sample containers are used.	True	
Sample bottles are completely filled.	True	
Sample Preservation Verified.	True	
There is sufficient vol. for all requested analyses, incl. any requested MS/MSDs	True	
Containers requiring zero headspace have no headspace or bubble is <6mm (1/4").	True	

- 1
- 2
- 3
- 4
- 5
- 6
- 7
- 8
- 9
- 10
- 11
- 12
- 13
- 14

Sante Fe Main Office  
Phone: (505) 476-3441

General Information  
Phone: (505) 629-6116

Online Phone Directory  
<https://www.emnrd.nm.gov/ocd/contact-us>

**State of New Mexico**  
**Energy, Minerals and Natural Resources**  
**Oil Conservation Division**  
**1220 S. St Francis Dr.**  
**Santa Fe, NM 87505**

CONDITIONS

Action 548311

**CONDITIONS**

Operator: HILCORP ENERGY COMPANY 1111 Travis Street Houston, TX 77002	OGRID: 372171
	Action Number: 548311
	Action Type: [UF-GWA] Ground Water Abatement (GROUND WATER ABATEMENT)

**CONDITIONS**

Created By	Condition	Condition Date
bhall	2025 Annual Groundwater Monitoring Report accepted for record.	3/30/2026
bhall	OCD is requiring a closure plan be submitted with the next submittal.	3/30/2026
bhall	Submit a semi-annual groundwater monitoring report, including closure plan, by July 17, 2026.	3/30/2026