



SITE INFORMATION

Closure Report
Hemlock BSH State CTB (12.07.25)
Incident ID: nAPP2534555562
Lea County, New Mexico
Unit C Sec 32 T23S R33E
32.267582°, -103.596465°

Produced Water Release
Point of Release: Equipment Failure on Pump
Release Date: 12/07/2025
Volume Released: 15 Barrels of Produced Water
Volume Recovered: 15 Barrels of Produced Water

CARMONA RESOURCES



Prepared for:
EOG Resources Inc.
5509 Champions Drive
Midland, Texas 79706

Prepared by:
Carmona Resources, LLC
310 West Wall Street
Suite 500
Midland, Texas 79701



TABLE OF CONTENTS

1.0 SITE INFORMATION AND BACKGROUND

2.0 SITE CHARACTERIZATION AND GROUNDWATER

3.0 NMAC REGULATORY CRITERIA

4.0 LINER INSPECTION ACTIVITIES

5.0 CONCLUSIONS

FIGURES

FIGURE 1	OVERVIEW	FIGURE 2	TOPOGRAPHIC
FIGURE 3	SECONDARY CONTAINMENT		

APPENDICES

APPENDIX A	PHOTOS
APPENDIX B	N.O.R AND FINAL C-141/NMOCD & NMSLO CORRESPONDENCE
APPENDIX C	SITE CHARACTERIZATION AND GROUNDWATER

March 26, 2026

New Mexico Oil Conservation Division
1220 South St, Francis Drive
Santa Fe, New Mexico 87505

**Re: Closure Report
Hemlock BSH State CTB (12.07.25)
Incident ID: nAPP2534555562
EOG Resources Inc.
Site Location: Unit C, S32, T23S, R33E
(Lat 32.536404°, Long -103.485581°)
Lea County, New Mexico**

To whom it may concern:

On behalf of EOG Resources Inc. (EOG) Carmona Resources LLC has prepared this letter to document site activities for the Hemlock BSH State CTB (12.07.25). The site is located at 32.536404°, -103.485581° within Unit C, S32, T23S, R33E, in Lea County, New Mexico (Figures 1 and 2).

1.0 Site Information and Background

Based on the Notification of Release and initial C-141 forms obtained from the New Mexico Oil Conservation Division (NMOCD), the release was discovered on December 7, 2025, due to equipment failure on a pump causing a leak. It resulted in approximately fifteen (15) barrels of produced water being released and fifteen (15) barrels of produced water being recovered. Refer to Figure 3. The Notification of Release and initial C-141 forms are attached in Appendix B.

2.0 Site Characterization and Groundwater

The site is located within a low karst area. Based on a review of the New Mexico Office of State Engineers and USGS databases, there are no known water sources within a 0.50-mile radius of the location. The nearest groundwater determination bore is located approximately 0.78 miles West of the site in S30, T23S, R33E and was drilled in 2025. The bore was drilled to a depth of 105' below ground surface (ft bgs) and no groundwater was encountered. A copy of the associated Summary report is attached in Appendix C.

3.0 Site Characterization and Groundwater

Per the NMOCD regulatory criteria established in 19.15.29.12 NMAC, the following criteria were utilized in assessing the site.

- Benzene: 10 milligrams per kilogram (mg/kg).
- Benzene, toluene, ethylbenzene, and total xylenes (BTEX): 50 mg/kg.
- TPH: 100 mg/kg (GRO + DRO + MRO).
- Chloride: 600 mg/kg.

4.0 Liner Inspection Activities

Before conducting the liner inspection, the NMOCD was notified via the portal on February 23, 2026. The NMSLO was notified via email on February 23, 2026. A crew previously arrived on site to remove all freestanding fluids and the affected pea gravel was removed. After the plastic liner was thoroughly cleaned, Carmona Resources personnel inspected the liner to assess its structural integrity. On February 25, 2026, Carmona Resources, LLC carried out liner inspection activities and confirmed that the liner was intact with no integrity issues. Refer to the Photolog for details.

5.0 Conclusions

Based on the liner inspection throughout the facility, no further actions are required at the site. If you have any questions regarding this report or need additional information, don't hesitate to contact us at 432-813-6823.

Sincerely,
Carmona Resources, LLC



Conner Moehring
Environmental Manager

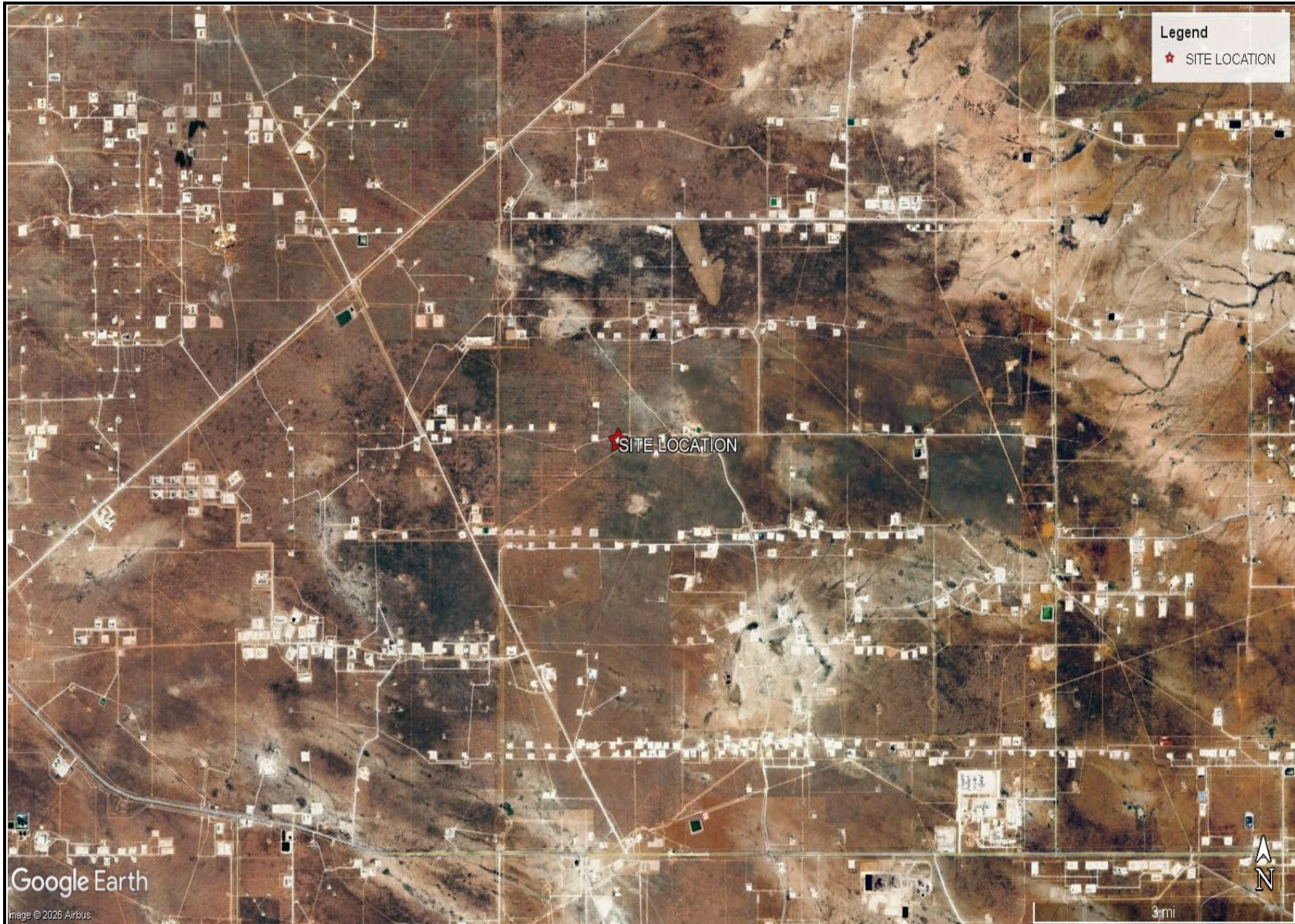



Stephen Reyes
Environmental Engineer

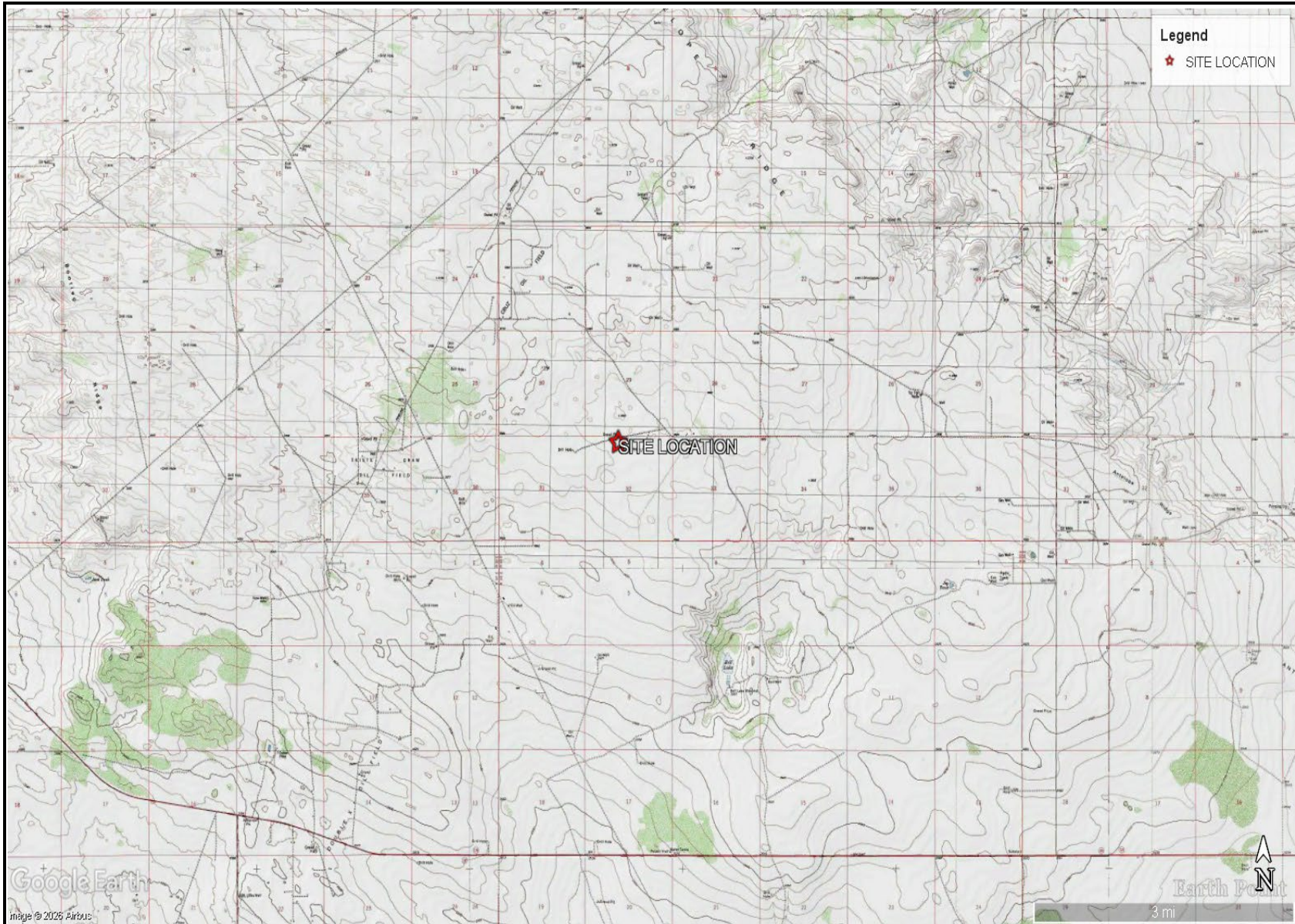
FIGURES

CARMONA RESOURCES





<p>OVERVIEW MAP EOG RESOURCES HEMLOCK BSH STATE CTB (12.07.25) LEA COUNTY, NEW MEXICO 32.267582°, -103.596465°</p>	<p>CARMONA RESOURCES </p>	<p>FIGURE 1</p>
--	--	-----------------



TOPOGRAPHIC MAP
EOG RESOURCES
HEMLOCK BSH STATE CTB (12.07.25)
LEA COUNTY, NEW MEXICO
32.267582°, -103.596465°



FIGURE 2



SECONDARY CONTAINMENT MAP
EOG RESOURCES
HEMLOCK BSH STATE CTB (12.07.25)
LEA COUNTY, NEW MEXICO
32.267582°, -103.596465°



FIGURE 3

APPENDIX A

CARMONA RESOURCES



PHOTOGRAPHIC LOG

EOG Resources

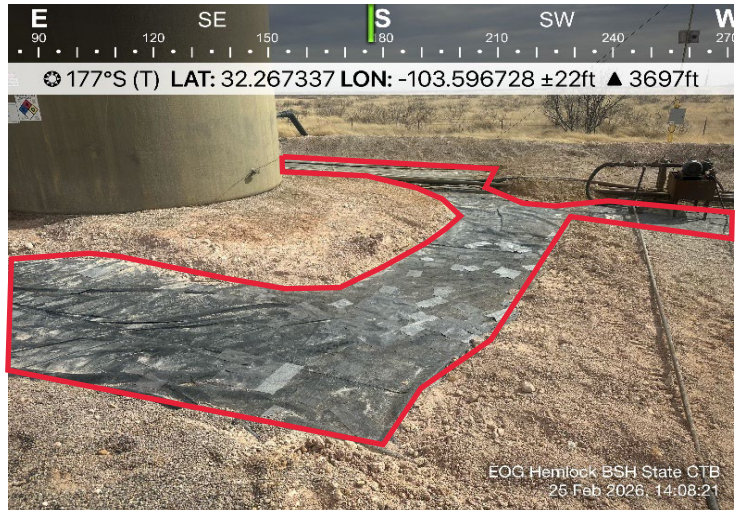
Photograph No. 1

Facility: Hemlock BSH State CTB (12.07.25)

County: Lea County, New Mexico

Description:

View South of lined containment



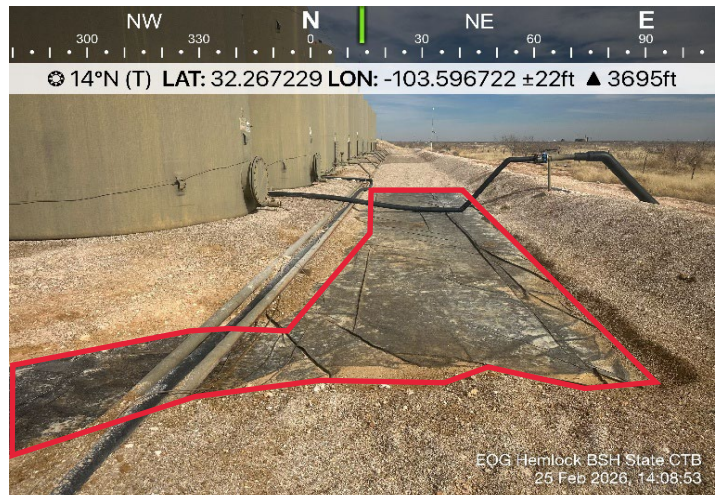
Photograph No. 2

Facility: Hemlock BSH State CTB (12.07.25)

County: Lea County, New Mexico

Description:

View North of lined containment



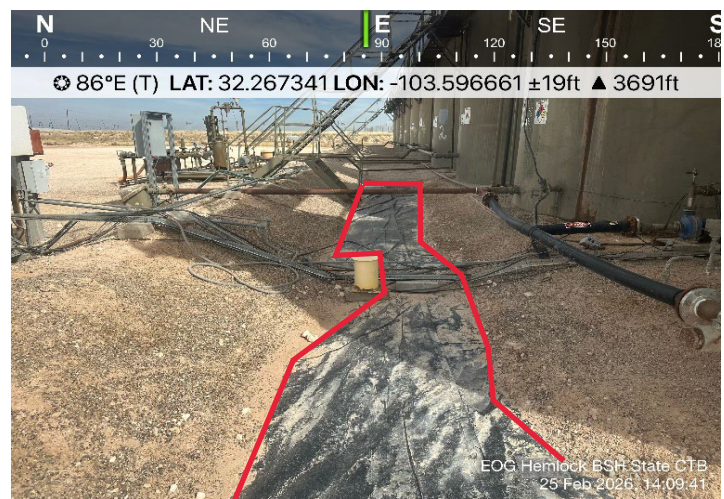
Photograph No. 3

Facility: Hemlock BSH State CTB (12.07.25)

County: Lea County, New Mexico

Description:

View East of lined containment



PHOTOGRAPHIC LOG

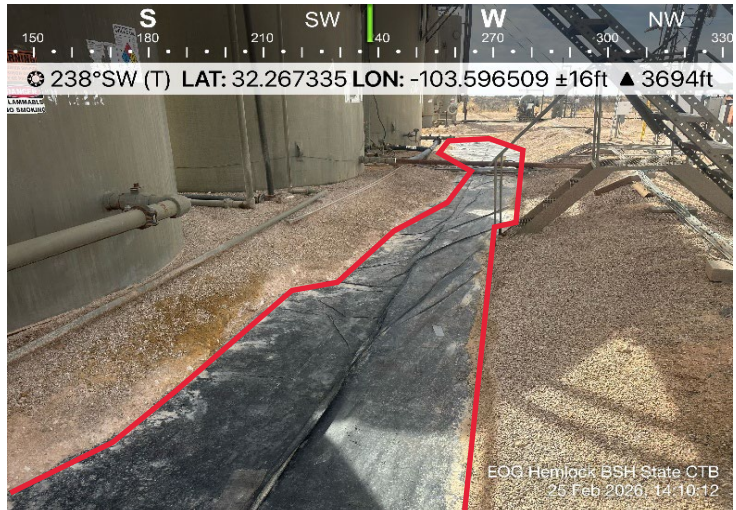
EOG Resources

Photograph No. 4

Facility: Hemlock BSH State CTB (12.07.25)

County: Lea County, New Mexico

Description:
View Southwest of lined containment



APPENDIX B

CARMONA RESOURCES



Sante Fe Main Office
Phone: (505) 476-3441

General Information
Phone: (505) 629-6116

Online Phone Directory
<https://www.emnrd.nm.gov/ocd/contact-us>

State of New Mexico
Energy, Minerals and Natural Resources
Oil Conservation Division
1220 S. St Francis Dr.
Santa Fe, NM 87505

QUESTIONS

Action 534187

QUESTIONS

Operator: EOG RESOURCES INC 5509 Champions Drive Midland, TX 79706	OGRID: 7377
	Action Number: 534187
	Action Type: [NOTIFY] Notification Of Release (NOR)

QUESTIONS

Location of Release Source	
<i>Please answer all the questions in this group.</i>	
Site Name	Hemlock BSH State CTB
Date Release Discovered	12/07/2025
Surface Owner	State

Incident Details	
<i>Please answer all the questions in this group.</i>	
Incident Type	Produced Water Release
Did this release result in a fire or is the result of a fire	No
Did this release result in any injuries	No
Has this release reached or does it have a reasonable probability of reaching a watercourse	No
Has this release endangered or does it have a reasonable probability of endangering public health	No
Has this release substantially damaged or will it substantially damage property or the environment	No
Is this release of a volume that is or may with reasonable probability be detrimental to fresh water	No

Nature and Volume of Release	
<i>Material(s) released, please answer all that apply below. Any calculations or specific justifications for the volumes provided should be attached to the follow-up C-141 submission.</i>	
Crude Oil Released (bbls) Details	Not answered.
Produced Water Released (bbls) Details	Cause: Equipment Failure Pump Produced Water Released: 15 BBL Recovered: 15 BBL Lost: 0 BBL.
Is the concentration of chloride in the produced water >10,000 mg/l	Yes
Condensate Released (bbls) Details	Not answered.
Natural Gas Vented (Mcf) Details	Not answered.
Natural Gas Flared (Mcf) Details	Not answered.
Other Released Details	Not answered.
Are there additional details for the questions above (i.e. any answer containing Other, Specify, Unknown, and/or Fire, or any negative lost amounts)	Release of produced water inside lined secondary containment. All fluids recovered.

Sante Fe Main Office
Phone: (505) 476-3441

General Information
Phone: (505) 629-6116

Online Phone Directory
<https://www.emnrd.nm.gov/ocd/contact-us>

**State of New Mexico
Energy, Minerals and Natural Resources
Oil Conservation Division
1220 S. St Francis Dr.
Santa Fe, NM 87505**

QUESTIONS, Page 2

Action 534187

QUESTIONS (continued)

Operator: EOG RESOURCES INC 5509 Champions Drive Midland, TX 79706	OGRID: 7377
	Action Number: 534187
	Action Type: [NOTIFY] Notification Of Release (NOR)

QUESTIONS

Nature and Volume of Release (continued)	
Is this a gas only submission (i.e. only significant Mcf values reported)	No, according to supplied volumes this does not appear to be a "gas only" report.
Was this a major release as defined by Subsection A of 19.15.29.7 NMAC	No
Reasons why this would be considered a submission for a notification of a major release	<i>Unavailable.</i>
<i>With the implementation of the 19.15.27 NMAC (05/25/2021), venting and/or flaring of natural gas (i.e. gas only) are to be submitted on the C-129 form.</i>	

Initial Response

The responsible party must undertake the following actions immediately unless they could create a safety hazard that would result in injury.

The source of the release has been stopped	True
The impacted area has been secured to protect human health and the environment	True
Released materials have been contained via the use of berms or dikes, absorbent pads, or other containment devices	True
All free liquids and recoverable materials have been removed and managed appropriately	True
If all the actions described above have not been undertaken, explain why	<i>Not answered.</i>

Per Paragraph 4 of Subsection B of 19.15.29.8 NMAC the responsible party may commence remediation immediately after discovery of a release. If remediation has begun, please prepare and attach a narrative of actions to date in the follow-up C-141 submission. If remedial efforts have been successfully completed or if the release occurred within a lined containment area (see 19.15.29.11(A)(5)(a) NMAC), please prepare and attach all information needed for closure evaluation in the follow-up C-141 submission.

Sante Fe Main Office
Phone: (505) 476-3441

General Information
Phone: (505) 629-6116

Online Phone Directory
<https://www.emnrd.nm.gov/ocd/contact-us>

**State of New Mexico
Energy, Minerals and Natural Resources
Oil Conservation Division
1220 S. St Francis Dr.
Santa Fe, NM 87505**

ACKNOWLEDGMENTS

Action 534187

ACKNOWLEDGMENTS

Operator: EOG RESOURCES INC 5509 Champions Drive Midland, TX 79706	OGRID: 7377
	Action Number: 534187
	Action Type: [NOTIFY] Notification Of Release (NOR)

ACKNOWLEDGMENTS

<input checked="" type="checkbox"/>	I acknowledge that I am authorized to submit notification of a release on behalf of my operator.
<input checked="" type="checkbox"/>	I acknowledge that upon submitting this application, I will be creating a new incident file (assigned to my operator) to track the notification(s) and corrective action(s) for a release, pursuant to NMAC 19.15.29.
<input checked="" type="checkbox"/>	I acknowledge that creating a new incident file will require my operator to file subsequent submission(s) of form "C-141, Application for administrative approval of a release notification and corrective action", pursuant to NMAC 19.15.29.
<input checked="" type="checkbox"/>	I hereby certify that the information given above is true and complete to the best of my knowledge and understand that pursuant to OCD rules and regulations all operators are required to report and/or file certain release notifications and perform corrective actions for releases which may endanger public health or the environment.
<input checked="" type="checkbox"/>	I acknowledge the fact that the acceptance of a C-141 report by the OCD does not relieve the operator of liability should their operations have failed to adequately investigate and remediate contamination that pose a threat to groundwater, surface water, human health or the environment.
<input checked="" type="checkbox"/>	I acknowledge the fact that, in addition, OCD acceptance of a C-141 report does not relieve the operator of responsibility for compliance with any other federal, state, or local laws and/or regulations.

Sante Fe Main Office
Phone: (505) 476-3441

General Information
Phone: (505) 629-6116

Online Phone Directory
<https://www.emnrd.nm.gov/ocd/contact-us>

State of New Mexico
Energy, Minerals and Natural Resources
Oil Conservation Division
1220 S. St Francis Dr.
Santa Fe, NM 87505

CONDITIONS

Action 534187

CONDITIONS

Operator: EOG RESOURCES INC 5509 Champions Drive Midland, TX 79706	OGRID: 7377
	Action Number: 534187
	Action Type: [NOTIFY] Notification Of Release (NOR)

CONDITIONS

Created By	Condition	Condition Date
bsmith01	When submitting future reports regarding this release, please submit the calculations used or specific justification for the volumes reported on the initial C-141.	12/11/2025

***** LIQUID SPILLS - VOLUME CALCULATIONS *****

Location of spill: Hemlock BSH State CTB

Date of Spill: 12/7/2025

If the leak/spill is associated with production equipment, i.e. - wellhead, stuffing box, flowline, tank battery, production vessel, transfer pump, or storage tank place an "X" here:

Input Data:

If spill volumes from measurement, i.e. metering, tank volumes, etc. are known enter the volumes here: OIL: 0.0000 BBL WATER: 0.0000 BBL

If "known" spill volumes are given, input data for the following "Area Calculations" is optional. The above will override the calculated volumes.

Total Area Calculations					Standing Liquid Calculations				
Total Surface Area	width	length	wet soil depth	oil (%)	Standing Liquid Area	width	length	liquid depth	oil (%)
Rectangle Area #1	0 ft X	0 ft X	0.00 in	0%	Rectangle Area #1	20 ft X	30 ft X	2 in	0%
Rectangle Area #2	0 ft X	0 ft X	0.00 in	0%	Rectangle Area #2	0 ft X	0 ft X	0 in	0%
Rectangle Area #3	0 ft X	0 ft X	0.00 in	0%	Rectangle Area #3	0 ft X	0 ft X	0 in	0%
Rectangle Area #4	0 ft X	0 ft X	0.00 in	0%	Rectangle Area #4	0 ft X	0 ft X	0 in	0%
Rectangle Area #5	0 ft X	0 ft X	0.00 in	0%	Rectangle Area #5	0 ft X	0 ft X	0 in	0%
Rectangle Area #6	0 ft X	0 ft X	0.00 in	0%	Rectangle Area #6	0 ft X	0 ft X	0 in	0%
Rectangle Area #7	0 ft X	0 ft X	0.00 in	0%	Rectangle Area #7	0 ft X	0 ft X	0 in	0%
Rectangle Area #8	0 ft X	0 ft X	0.00 in	0%	Rectangle Area #8	0 ft X	0 ft X	0 in	0%

ERROR - Standing Liquid Area larger than Total Area, Review Data Input
production system leak - DAILY PRODUCTION DATA REQUIRED

Average Daily Production: Oil 0 BBL Water 0 BBL

Did leak occur before the separator?: YES N/A (place an "X")

Amount of Free Liquid Recovered: 15 BBL okay Percentage of Oil in Free Liquid Recovered: 0% (percentage)

Liquid holding factor *: 0.14 gal per gal

Use the following when the spill wets the grains of the soil:
 * sand = .08 gallon liquid per gallon volume of soil.
 * gravelly (caliche) loam = .14 gallon liquid per gallon volume of soil.
 * sandy clay loam soil = .14 gallon liquid per gallon volume of soil.
 * clay loam = .16 gallon liquid per gallon volume of soil.

Use the following when the liquid completely fills the pore space of the soil:
 Occurs when the spill soaked soil is contained by barriers, natural (or not).
 * gravelly (caliche) loam = .25 gallon liquid per gallon volume of soil.
 * sandy loam = .5 gallon liquid per gallon volume of soil.

Saturated Soil Volume Calculations:			Free Liquid Volume Calculations:			
Total Solid/Liquid Volume:	sq. ft.	<u>H2O</u> cu. ft.	<u>OIL</u> cu. ft.	Total Free Liquid Volume:	<u>H2O</u> cu. ft.	<u>OIL</u> cu. ft.
				600 sq. ft.	87.500	.000
Estimated Volumes Spilled			Estimated Production Volumes Lost			
Liquid in Soil:		<u>0.0</u> BBL	<u>0.0</u> BBL	Estimated Production Spilled:	<u>0.000000</u> BBL	<u>0.000000</u> BBL
Free Liquid:		<u>15.6</u> BBL	<u>0.0</u> BBL	Estimated Surface Damage		
Totals:		<u>15.583</u> BBL	<u>0.000</u> BBL	Surface Area:	<u>600</u> sq. ft.	
				Surface Area:	<u>.0138</u> acre	
Total Liquid Spill Liquid:		<u>15.583</u> BBL	<u>0.000</u> BBL	Estimated Weights, and Volumes		
Recovered Volumes						
Estimated oil recovered:	<u>0.0</u> BBL	check - okay		Saturated Soil =	lbs	cu.ft.
Estimated water recovered:	<u>15.0</u> BBL	check - okay		Total Liquid =	<u>16</u> BBL	<u>654.50</u> gallon
						<u>5,445</u> lbs

Sante Fe Main Office
Phone: (505) 476-3441

General Information
Phone: (505) 629-6116

Online Phone Directory
<https://www.emnrd.nm.gov/ocd/contact-us>

State of New Mexico
Energy, Minerals and Natural Resources
Oil Conservation Division
1220 S. St Francis Dr.
Santa Fe, NM 87505

QUESTIONS

Action 545416

QUESTIONS

Operator: EOG RESOURCES INC 5509 Champions Drive Midland, TX 79706	OGRID: 7377
	Action Number: 545416
	Action Type: [C-141] Initial C-141 (C-141-v-Initial)

QUESTIONS

Prerequisites	
Incident ID (n#)	nAPP2534555562
Incident Name	NAPP2534555562 HEMLOCK BSH STATE CTB @ C-32-23S-33E
Incident Type	Produced Water Release
Incident Status	Initial C-141 Received

Location of Release Source	
<i>Please answer all the questions in this group.</i>	
Site Name	Hemlock BSH State CTB
Date Release Discovered	12/07/2025
Surface Owner	State

Incident Details	
<i>Please answer all the questions in this group.</i>	
Incident Type	Produced Water Release
Did this release result in a fire or is the result of a fire	No
Did this release result in any injuries	No
Has this release reached or does it have a reasonable probability of reaching a watercourse	No
Has this release endangered or does it have a reasonable probability of endangering public health	No
Has this release substantially damaged or will it substantially damage property or the environment	No
Is this release of a volume that is or may with reasonable probability be detrimental to fresh water	No

Nature and Volume of Release	
<i>Material(s) released, please answer all that apply below. Any calculations or specific justifications for the volumes provided should be attached to the follow-up C-141 submission.</i>	
Crude Oil Released (bbls) Details	Not answered.
Produced Water Released (bbls) Details	Cause: Equipment Failure Pump Produced Water Released: 15 BBL Recovered: 15 BBL Lost: 0 BBL.
Is the concentration of chloride in the produced water >10,000 mg/l	Yes
Condensate Released (bbls) Details	Not answered.
Natural Gas Vented (Mcf) Details	Not answered.
Natural Gas Flared (Mcf) Details	Not answered.
Other Released Details	Not answered.
Are there additional details for the questions above (i.e. any answer containing Other, Specify, Unknown, and/or Fire, or any negative lost amounts)	Release of produced water inside lined secondary containment. All fluids recovered.

Sante Fe Main Office
Phone: (505) 476-3441

General Information
Phone: (505) 629-6116

Online Phone Directory
<https://www.emnrd.nm.gov/ocd/contact-us>

**State of New Mexico
Energy, Minerals and Natural Resources
Oil Conservation Division
1220 S. St Francis Dr.
Santa Fe, NM 87505**

QUESTIONS, Page 2

Action 545416

QUESTIONS (continued)

Operator: EOG RESOURCES INC 5509 Champions Drive Midland, TX 79706	OGRID: 7377
	Action Number: 545416
	Action Type: [C-141] Initial C-141 (C-141-v-Initial)

QUESTIONS

Nature and Volume of Release (continued)	
Is this a gas only submission (i.e. only significant Mcf values reported)	No, according to supplied volumes this does not appear to be a "gas only" report.
Was this a major release as defined by Subsection A of 19.15.29.7 NMAC	No
Reasons why this would be considered a submission for a notification of a major release	<i>Unavailable.</i>
<i>With the implementation of the 19.15.27 NMAC (05/25/2021), venting and/or flaring of natural gas (i.e. gas only) are to be submitted on the C-129 form.</i>	

Initial Response

The responsible party must undertake the following actions immediately unless they could create a safety hazard that would result in injury.

The source of the release has been stopped	True
The impacted area has been secured to protect human health and the environment	True
Released materials have been contained via the use of berms or dikes, absorbent pads, or other containment devices	True
All free liquids and recoverable materials have been removed and managed appropriately	True
If all the actions described above have not been undertaken, explain why	<i>Not answered.</i>

Per Paragraph (4) of Subsection B of 19.15.29.8 NMAC the responsible party may commence remediation immediately after discovery of a release. If remediation has begun, please prepare and attach a narrative of actions to date in the follow-up C-141 submission. If remedial efforts have been successfully completed or if the release occurred within a lined containment area (see Subparagraph (a) of Paragraph (5) of Subsection A of 19.15.29.11 NMAC), please prepare and attach all information needed for closure evaluation in the follow-up C-141 submission.

I hereby certify that the information given above is true and complete to the best of my knowledge and understand that pursuant to OCD rules and regulations all operators are required to report and/or file certain release notifications and perform corrective actions for releases which may endanger public health or the environment. The acceptance of a C-141 report by the OCD does not relieve the operator of liability should their operations have failed to adequately investigate and remediate contamination that pose a threat to groundwater, surface water, human health or the environment. In addition, OCD acceptance of a C-141 report does not relieve the operator of responsibility for compliance with any other federal, state, or local laws and/or regulations.

I hereby agree and sign off to the above statement	Name: Bill Smith Title: Sr. Environmental Representative Email: bill_smith@eogresources.com Date: 01/22/2026
--	---

Sante Fe Main Office
Phone: (505) 476-3441

General Information
Phone: (505) 629-6116

Online Phone Directory
<https://www.emnrd.nm.gov/ocd/contact-us>

State of New Mexico
Energy, Minerals and Natural Resources
Oil Conservation Division
1220 S. St Francis Dr.
Santa Fe, NM 87505

QUESTIONS, Page 3

Action 545416

QUESTIONS (continued)

Operator: EOG RESOURCES INC 5509 Champions Drive Midland, TX 79706	OGRID: 7377
	Action Number: 545416
	Action Type: [C-141] Initial C-141 (C-141-v-Initial)

QUESTIONS

Site Characterization

Please answer all the questions in this group (only required when seeking remediation plan approval and beyond). This information must be provided to the appropriate district office no later than 90 days after the release discovery date.

What is the shallowest depth to groundwater beneath the area affected by the release in feet below ground surface (ft bgs)	Not answered.
What method was used to determine the depth to ground water	Not answered.
Did this release impact groundwater or surface water	Not answered.
What is the minimum distance, between the closest lateral extents of the release and the following surface areas:	
A continuously flowing watercourse or any other significant watercourse	Not answered.
Any lakebed, sinkhole, or playa lake (measured from the ordinary high-water mark)	Not answered.
An occupied permanent residence, school, hospital, institution, or church	Not answered.
A spring or a private domestic fresh water well used by less than five households for domestic or stock watering purposes	Not answered.
Any other fresh water well or spring	Not answered.
Incorporated municipal boundaries or a defined municipal fresh water well field	Not answered.
A wetland	Not answered.
A subsurface mine	Not answered.
An (non-karst) unstable area	Not answered.
Categorize the risk of this well / site being in a karst geology	Not answered.
A 100-year floodplain	Not answered.
Did the release impact areas not on an exploration, development, production, or storage site	Not answered.

Remediation Plan

Please answer all the questions that apply or are indicated. This information must be provided to the appropriate district office no later than 90 days after the release discovery date.

Requesting a remediation plan approval with this submission	No
The OCD recognizes that proposed remediation measures may have to be minimally adjusted in accordance with the physical realities encountered during remediation. If the responsible party has any need to significantly deviate from the remediation plan proposed, then it should consult with the division to determine if another remediation plan submission is required.	

Sante Fe Main Office
Phone: (505) 476-3441

General Information
Phone: (505) 629-6116

Online Phone Directory
<https://www.emnrd.nm.gov/ocd/contact-us>

State of New Mexico
Energy, Minerals and Natural Resources
Oil Conservation Division
1220 S. St Francis Dr.
Santa Fe, NM 87505

CONDITIONS

Action 545416

CONDITIONS

Operator: EOG RESOURCES INC 5509 Champions Drive Midland, TX 79706	OGRID: 7377
	Action Number: 545416
	Action Type: [C-141] Initial C-141 (C-141-v-Initial)

CONDITIONS

Created By	Condition	Condition Date
nvez	None	1/22/2026

Sante Fe Main Office
Phone: (505) 476-3441

General Information
Phone: (505) 629-6116

Online Phone Directory
<https://www.emnrd.nm.gov/ocd/contact-us>

**State of New Mexico
Energy, Minerals and Natural Resources
Oil Conservation Division
1220 S. St Francis Dr.
Santa Fe, NM 87505**

QUESTIONS

Action 556630

QUESTIONS

Operator: EOG RESOURCES INC 5509 Champions Drive Midland, TX 79706	OGRID: 7377
	Action Number: 556630
	Action Type: [NOTIFY] Notification Of Liner Inspection (C-141L)

QUESTIONS

Prerequisites	
Incident ID (n#)	nAPP2534555562
Incident Name	NAPP2534555562 HEMLOCK BSH STATE CTB @ C-32-23S-33E
Incident Type	Produced Water Release
Incident Status	Initial C-141 Approved

Location of Release Source	
Site Name	Hemlock BSH State CTB
Date Release Discovered	12/07/2025
Surface Owner	State

Liner Inspection Event Information	
<i>Please answer all the questions in this group.</i>	
What is the liner inspection surface area in square feet	600
Have all the impacted materials been removed from the liner	Yes
Liner inspection date pursuant to Subparagraph (a) of Paragraph (5) of Subsection A of 19.15.29.11 NMAC	02/25/2026
Time liner inspection will commence	11:00 AM
Please provide any information necessary for observers to liner inspection	Inspection Information: Carmona Resources – 432-813-6823
Please provide any information necessary for navigation to liner inspection site	Driving Directions – 32.131217, -103.476797

Sante Fe Main Office
Phone: (505) 476-3441

General Information
Phone: (505) 629-6116

Online Phone Directory
<https://www.emnrd.nm.gov/ocd/contact-us>

State of New Mexico
Energy, Minerals and Natural Resources
Oil Conservation Division
1220 S. St Francis Dr.
Santa Fe, NM 87505

CONDITIONS

Action 556630

CONDITIONS

Operator: EOG RESOURCES INC 5509 Champions Drive Midland, TX 79706	OGRID: 7377
	Action Number: 556630
	Action Type: [NOTIFY] Notification Of Liner Inspection (C-141L)

CONDITIONS

Created By	Condition	Condition Date
todd wells	Failure to notify the OCD of liner inspections including any changes in date/time per the requirements of 19.15.29.11.A(5)(a)(ii) NMAC, may result in the inspection not being accepted.	2/23/2026

Conner Moehring

From: Conner Moehring
Sent: Monday, February 23, 2026 1:50 PM
To: eco@nmslo.gov
Cc: Todd Wells; Bill Smith; Mike Carmona; Stephen Reyes; Ivan Ramos
Subject: EOG - Hemlock BSH State CTB - nAPP253455562 - Liner Inspection Notification
Attachments: NMOCD - Liner Inspection Notification Confirmation - EOG - Hemlock BSH State CTB.pdf

Good Afternoon,

On behalf of EOG Resources, we are submitting a liner inspection notification to the NMSLO that is in line with the NMOCD sampling notification. The liner inspection is to take place on February 25, 2026, at approximately 11:00 am (Mountain Time). The site is located at 32.131217, -103.476797.

Please call if you have any questions or need any additional information.

Conner R. Moehring
310 West Wall Street, Suite 500
Midland TX, 79701
M: 432-813-6823
cmoehring@carmonaresources.com
carmonaresources.com

APPENDIX C



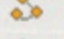
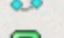
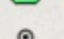

CARMONA RESOURCES



Nearest water well

EOG RESOURCES INC

Legend

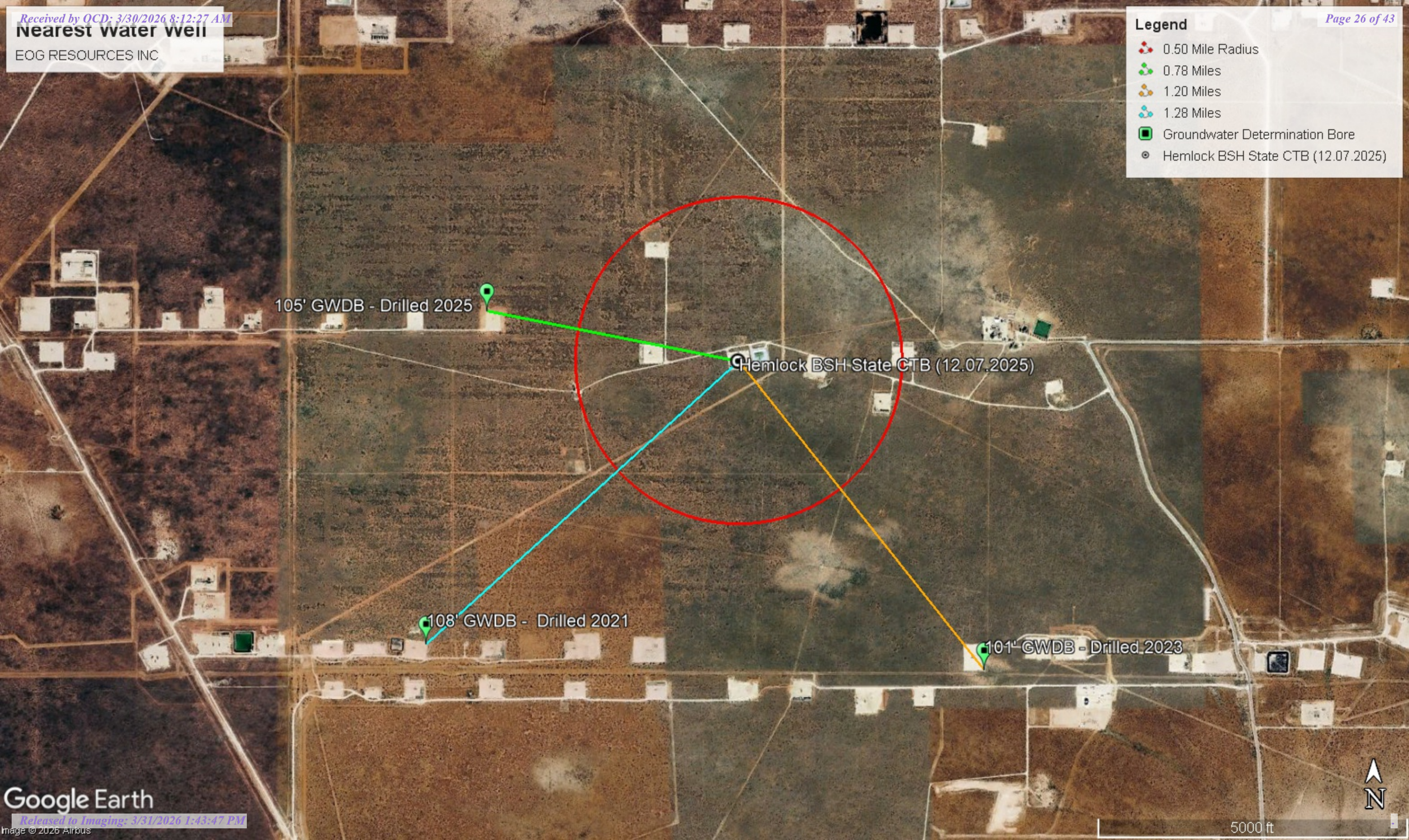
-  0.50 Mile Radius
-  0.78 Miles
-  1.20 Miles
-  1.28 Miles
-  Groundwater Determination Bore
-  Hemlock BSH State CTB (12.07.2025)

105' GWDB - Drilled 2025

Hemlock BSH State CTB (12.07.2025)

108' GWDB - Drilled 2021

101' GWDB - Drilled 2023



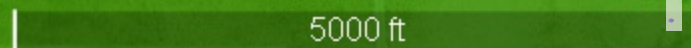
Low Karst

EOG RESOURCES INC

Legend

-  Hemlock BSH State CTB (12.07.2025)
-  Low

Hemlock BSH State CTB (12.07.2025)





New Mexico Office of the State Engineer

Water Column/Average Depth to Water

(A CLW##### in the POD suffix indicates the POD has been replaced & no longer serves a water right file.) (R=POD has been replaced, O=orphaned, C=the file is closed)

(quarters are smallest to largest)

(meters)

(In feet)

POD Number	Code	Sub basin	County	Q64	Q16	Q4	Sec	Tws	Range	X	Y	Map	Distance	Well Depth	Depth Water	Water Column
C 05013 POD1		CUB	LE	SW	SW	SE	30	23S	33E	630949.0	3571185.4	●	1260	105		
C 02279		CUB	LE	SW	SE	SW	28	23S	33E	633691.0	3571173.0 *	●	1517	650	400	250
C 04707 POD1		CUB	LE	SE	SW	SW	33	23S	33E	633412.6	3569469.4	●	1928			
C 02277		CUB	LE	NE	SW	SE	20	23S	33E	632663.0	3572970.0 *	●	2065	550	400	150
C 04551 POD1		CUB	LE	SE	SE	SW	31	23S	33E	630671.0	3569556.5	●	2067			
C 02281		CUB	LE	SW	SE	SE	28	23S	33E	634495.0	3571183.0 *	●	2316	545	400	145
C 02280		CUB	LE	SW	NE	SE	28	23S	33E	634489.0	3571586.0 *	●	2383	650	400	250
C 03591 POD1		CUB	LE	NE	NW	SE	05	24S	33E	632731.3	3568518.0	●	2501			
C 02278		CUB	LE	SW	SE	NE	28	23S	33E	634484.0	3571989.0 *	●	2515	650	400	250
C 02276		CUB	LE	SW	NW	SE	19	23S	33E	630848.0	3573154.0 *	●	2571	650	400	250
C 02275		CUB	LE	SW	SW	NE	19	23S	33E	630843.0	3573557.0 *	●	2925	650	400	250
C 04963 POD1		CUB	LE	NW	NW	NW	27	23S	33E	634862.2	3572675.6	●	3176	80	70	10
C 04895 POD1		CUB	LE	NW	SE	SW	27	23S	33E	635374.0	3571309.0	●	3204	55		
C 04595 POD1		CUB	LE	SE	SW	SW	34	23S	33E	635149.5	3569564.9	●	3272	55		

Average Depth to Water: **358 feet**

Minimum Depth: **70 feet**

Maximum Depth: **400 feet**

Record Count: 14

UTM Filters (in meters):

Easting: 632189.00

Northing: 3570960.00

Radius: 4000

* UTM location was derived from PLSS - see Help

The data is furnished by the NMOSE/ISC and is accepted by the recipient with the expressed understanding that the OSE/ISC make no warranties, expressed or implied, concerning the accuracy, completeness, reliability, usability, or suitability for any particular purpose of the data.



WELL RECORD & LOG

OFFICE OF THE STATE ENGINEER

www.ose.state.nm.us

1. GENERAL AND WELL LOCATION	OSE POD NO. (WELL NO.) Pod-1		WELL TAG ID NO.		OSE FILE NO(S). C-05013			
	WELL OWNER NAME(S) Coterra Energy Co.				PHONE (OPTIONAL) 432-208-3035			
	WELL OWNER MAILING ADDRESS 840 Gessner Rd, Ste. 1400				CITY Houston	STATE TX	ZIP 77024-4152	
	WELL LOCATION (FROM GPS)	DEGREES LATITUDE	MINUTES 32	SECONDS 16	11.13	* ACCURACY REQUIRED: ONE TENTH OF A SECOND		
		LONGITUDE	103	36	34.61	* DATUM REQUIRED: WGS 84		
DESCRIPTION RELATING WELL LOCATION TO STREET ADDRESS AND COMMON LANDMARKS - PLSS (SECTION, TOWNSHIP, RANGE) WHERE AVAILABLE SWSE S-30 T-23S R-33E								
2. DRILLING & CASING INFORMATION	LICENSE NO. WD-1862		NAME OF LICENSED DRILLER James Hawley			NAME OF WELL DRILLING COMPANY H&R Enterprises, LLC		
	DRILLING STARTED 10/21/25	DRILLING ENDED 10/21/25	DEPTH OF COMPLETED WELL (FT) 105	BORE HOLE DEPTH (FT) 105	DEPTH WATER FIRST ENCOUNTERED (FT) Dry Hole			
	COMPLETED WELL IS: <input type="checkbox"/> ARTESIAN *add Centralizer info below <input checked="" type="checkbox"/> DRY HOLE <input type="checkbox"/> SHALLOW (UNCONFINED)				STATIC WATER LEVEL IN COMPLETED WELL (FT)	DATE STATIC MEASURED		
	DRILLING FLUID: <input checked="" type="checkbox"/> AIR <input type="checkbox"/> MUD ADDITIVES - SPECIFY:							
	DRILLING METHOD: <input checked="" type="checkbox"/> ROTARY <input type="checkbox"/> HAMMER <input type="checkbox"/> CABLE TOOL <input type="checkbox"/> OTHER - SPECIFY:					CHECK HERE IF PITLESS ADAPTER IS INSTALLED <input type="checkbox"/>		
	DEPTH (feet bgl)		BORE HOLE DIAM (inches)	CASING MATERIAL AND/OR GRADE (include each casing string, and note sections of screen)	CASING CONNECTION TYPE (add coupling diameter)	CASING INSIDE DIAM. (inches)	CASING WALL THICKNESS (inches)	SLOT SIZE (inches)
	FROM	TO						
				No casing left in hole				
3. ANNULAR MATERIAL	DEPTH (feet bgl)		BORE HOLE DIAM. (inches)	LIST ANNULAR SEAL MATERIAL AND GRAVEL PACK SIZE-RANGE BY INTERVAL <i>*(if using Centralizers for Artesian wells- indicate the spacing below)</i>	AMOUNT (cubic feet)	METHOD OF PLACEMENT		
	FROM	TO						
				N/A				

OSE DIX ROSWELL NM
31 OCT 25 PM 1:05

FOR OSE INTERNAL USE		WR-20 WELL RECORD & LOG (Version 09/22/2022)			
FILE NO. C-5013	POD NO. 1	TRN NO. 791588			
LOCATION 235-33E-30 334	WELL TAG ID NO. NA	PAGE 1 OF 2			



WELL RECORD & LOG

OFFICE OF THE STATE ENGINEER

www.ose.state.nm.us

1. GENERAL AND WELL LOCATION	OSE POD NO. (WELL NO.) POD 1 (TW-1)		WELL TAG ID NO. N/A		OSE FILE NO(S). C-4707			
	WELL OWNER NAME(S) Devon Energy				PHONE (OPTIONAL) 575-748-1838			
	WELL OWNER MAILING ADDRESS 6488 7 Rivers Hwy				CITY Artesia	STATE NM	ZIP 88210	
	WELL LOCATION (FROM GPS)	DEGREES LATITUDE	MINUTES 32	SECONDS 15	14.18	N	* ACCURACY REQUIRED: ONE TENTH OF A SECOND	
	LONGITUDE	103	35	1.32	W	* DATUM REQUIRED: WGS 84		
DESCRIPTION RELATING WELL LOCATION TO STREET ADDRESS AND COMMON LANDMARKS - PLSS (SECTION, TOWNSHIP, RANGE) WHERE AVAILABLE SW SW SW Sec.33 T23S R33E NMPM								
2. DRILLING & CASING INFORMATION	LICENSE NO. 1249		NAME OF LICENSED DRILLER Jackie D. Atkins			NAME OF WELL DRILLING COMPANY Atkins Engineering Associates, Inc.		
	DRILLING STARTED 4/11/23	DRILLING ENDED 4/12/23	DEPTH OF COMPLETED WELL (FT) Temporary Well Material		BORE HOLE DEPTH (FT) ±101	DEPTH WATER FIRST ENCOUNTERED (FT) N/A		
	COMPLETED WELL IS: <input type="checkbox"/> ARTESIAN <input checked="" type="checkbox"/> DRY HOLE <input type="checkbox"/> SHALLOW (UNCONFINED)				STATIC WATER LEVEL IN COMPLETED WELL (FT) N/A	DATE STATIC MEASURED 4/18/2023		
	DRILLING FLUID: <input type="checkbox"/> AIR <input type="checkbox"/> MUD ADDITIVES - SPECIFY:							
	DRILLING METHOD: <input type="checkbox"/> ROTARY <input type="checkbox"/> HAMMER <input type="checkbox"/> CABLE TOOL <input checked="" type="checkbox"/> OTHER - SPECIFY: Hollow Stem Auger					CHECK HERE IF PITLESS ADAPTER IS INSTALLED <input type="checkbox"/>		
	DEPTH (feet bgl)		BORE HOLE DIAM (inches)	CASING MATERIAL AND/OR GRADE (include each casing string, and note sections of screen)	CASING CONNECTION TYPE (add coupling diameter)	CASING INSIDE DIAM. (inches)	CASING WALL THICKNESS (inches)	SLOT SIZE (inches)
	FROM	TO						
	0	101	±6.25	Soil Boring	--	--	--	--
3. ANNULAR MATERIAL	DEPTH (feet bgl)		BORE HOLE DIAM. (inches)	LIST ANNULAR SEAL MATERIAL AND GRAVEL PACK SIZE-RANGE BY INTERVAL	AMOUNT (cubic feet)	METHOD OF PLACEMENT		
	FROM	TO						
				N/A				

OSE 01 APR 21 2023 PRO-30

FOR OSE INTERNAL USE		WR-20 WELL RECORD & LOG (Version 01/28/2022)			
FILE NO.	C-4707	POD NO.	1	TRN NO.	742696
LOCATION	235. 336.33 4 3 3			WELL TAG ID NO.	NA
					PAGE 1 OF 2



WELL RECORD & LOG

OFFICE OF THE STATE ENGINEER

www.ose.state.nm.us

USE DIT AUG 17 2021 4:31:03


1. GENERAL AND WELL LOCATION	OSE POD NO. (WELL NO.) POD1 (BH-01)		WELL TAG ID NO. n/a		OSE FILE NO(S). C-4551			
	WELL OWNER NAME(S) XTO Energy (Kyle Littrell)				PHONE (OPTIONAL)			
	WELL OWNER MAILING ADDRESS 6401 Holiday Hill Dr.				CITY Midland	STATE TX	ZIP 79707	
	WELL LOCATION (FROM GPS)	LATITUDE	DEGREES 32	MINUTES 15	SECONDS 18.36	N		* ACCURACY REQUIRED: ONE TENTH OF A SECOND * DATUM REQUIRED: WGS 84
		LONGITUDE	103	36	46.04	W		
DESCRIPTION RELATING WELL LOCATION TO STREET ADDRESS AND COMMON LANDMARKS - PLSS (SECTION, TOWNSHIP, RANGE) WHERE AVAILABLE SE SW Sec. 31T23S R33E								
2. DRILLING & CASING INFORMATION	LICENSE NO. 1249		NAME OF LICENSED DRILLER Jackie D. Atkins			NAME OF WELL DRILLING COMPANY Atkins Engineering Associates, Inc.		
	DRILLING STARTED 07/20/2021	DRILLING ENDED 07/20/2021	DEPTH OF COMPLETED WELL (FT) temporary well material		BORE HOLE DEPTH (FT) 108	DEPTH WATER FIRST ENCOUNTERED (FT) n/a		
	COMPLETED WELL IS: <input type="checkbox"/> ARTESIAN <input checked="" type="checkbox"/> DRY HOLE <input type="checkbox"/> SHALLOW (UNCONFINED)					STATIC WATER LEVEL IN COMPLETED WELL (FT) n/a		
	DRILLING FLUID: <input type="checkbox"/> AIR <input type="checkbox"/> MUD ADDITIVES - SPECIFY:							
	DRILLING METHOD: <input type="checkbox"/> ROTARY <input type="checkbox"/> HAMMER <input type="checkbox"/> CABLE TOOL <input checked="" type="checkbox"/> OTHER - SPECIFY: Hollow Stem Auger							
	DEPTH (feet bgl)		BORE HOLE DIAM (inches)	CASING MATERIAL AND/OR GRADE (include each casing string, and note sections of screen)	CASING CONNECTION TYPE (add coupling diameter)	CASING INSIDE DIAM. (inches)	CASING WALL THICKNESS (inches)	SLOT SIZE (inches)
	FROM	TO						
	0	108	±6.5	Boring- HSA	--	--	--	--
3. ANNULAR MATERIAL	DEPTH (feet bgl)		BORE HOLE DIAM. (inches)	LIST ANNULAR SEAL MATERIAL AND GRAVEL PACK SIZE-RANGE BY INTERVAL	AMOUNT (cubic feet)	METHOD OF PLACEMENT		
	FROM	TO						

FOR OSE INTERNAL USE		WR-20 WELL RECORD & LOG (Version 06/30/17)			
FILE NO.	C-4551	POD NO.	1	TRN NO.	699428
LOCATION	135-33E-31 443			WELL TAG ID NO.	PAGE 1 OF 2

DSE DTT AUG 17 2021 PM 3:09

4. HYDROGEOLOGIC LOG OF WELL	DEPTH (feet bgl)		THICKNESS (feet)	COLOR AND TYPE OF MATERIAL ENCOUNTERED - INCLUDE WATER-BEARING CAVITIES OR FRACTURE ZONES (attach supplemental sheets to fully describe all units)	WATER BEARING? (YES / NO)	ESTIMATED YIELD FOR WATER-BEARING ZONES (gpm)
	FROM	TO				
	0	15	15	Sand, fine grain, poorly graded, moist, Reddish Brown	Y ✓ N	
	15	40	25	Caliche, poorly consolidated, Tan-Off White	Y ✓ N	
	40	45	5	Sand, medium-fine grain, poorly graded, trace caliche, Light Brown	Y ✓ N	
	45	50	5	Clayey Sand, fine- medium grain , poorly graded, cohesive, Reddish Brown	Y ✓ N	
	50	55	5	Sandy Clay, fine- medium grain , poorly graded, cohesive, Reddish Brown	Y ✓ N	
	55	70	15	Claystone, poorly cemented, cohesive, Reddish brown,	Y ✓ N	
	70	75	5	Clayey Sand, medium grain , poorly graded, cohesive, Light Brown	Y ✓ N	
	75	80	5	Silty Sand, fine- very finegrain , poorly graded, cohesive, Light Brown	Y ✓ N	
	80	85	5	Clayey Sand, fine- medium grain , poorly graded, cohesive, Light Brown	Y ✓ N	
	85	100	15	Sandy Clay, poorly graded, cohesive, Reddish Brown	Y ✓ N	
	100	105	5	Clay, low plasticity, cohesive, Brown-Blueish Gray, Dry	Y ✓ N	
	105	108	3	Claystone, poorly cemented, cohesive, Reddish brown, dry	Y ✓ N	
					Y N	
					Y N	
					Y N	
					Y N	
					Y N	
					Y N	
					Y N	
					Y N	
					Y N	
METHOD USED TO ESTIMATE YIELD OF WATER-BEARING STRATA:					TOTAL ESTIMATED WELL YIELD (gpm): 0.00	
<input type="checkbox"/> PUMP <input type="checkbox"/> AIR LIFT <input type="checkbox"/> BAILER <input type="checkbox"/> OTHER - SPECIFY:						

5. TEST; RIG SUPERVISION	WELL TEST	TEST RESULTS - ATTACH A COPY OF DATA COLLECTED DURING WELL TESTING, INCLUDING DISCHARGE METHOD, START TIME, END TIME, AND A TABLE SHOWING DISCHARGE AND DRAWDOWN OVER THE TESTING PERIOD.
	MISCELLANEOUS INFORMATION:	Temporary well materials removed and the soil boring backfilled using drill cuttings from total depth to ten feet below ground surface, then hydrated bentonite chips from ten feet below ground surface to surface. Logs adapted from WSP on-site geologist.
	PRINT NAME(S) OF DRILL RIG SUPERVISOR(S) THAT PROVIDED ONSITE SUPERVISION OF WELL CONSTRUCTION OTHER THAN LICENSEE:	Shane Eldridge, Carmelo Trevino, Cameron Pruitt

6. SIGNATURE	THE UNDERSIGNED HEREBY CERTIFIES THAT, TO THE BEST OF HIS OR HER KNOWLEDGE AND BELIEF, THE FOREGOING IS A TRUE AND CORRECT RECORD OF THE ABOVE DESCRIBED HOLE AND THAT HE OR SHE WILL FILE THIS WELL RECORD WITH THE STATE ENGINEER AND THE PERMIT HOLDER WITHIN 30 DAYS AFTER COMPLETION OF WELL DRILLING:	
	 JACKIE D. ATKINS SIGNATURE OF DRILLER / PRINT SIGNEE NAME	08/13/2021 DATE

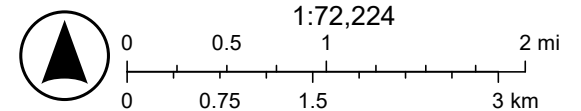
FOR OSE INTERNAL USE		WR-20 WELL RECORD & LOG (Version 06/30/2017)	
FILE NO. C-4551	POD NO. 1	TRN NO. 699428	
LOCATION 23S-33E-31 443	WELL TAG ID NO.	PAGE 2 OF 2	

Hemlock BSH State CTB (12.07.2025)



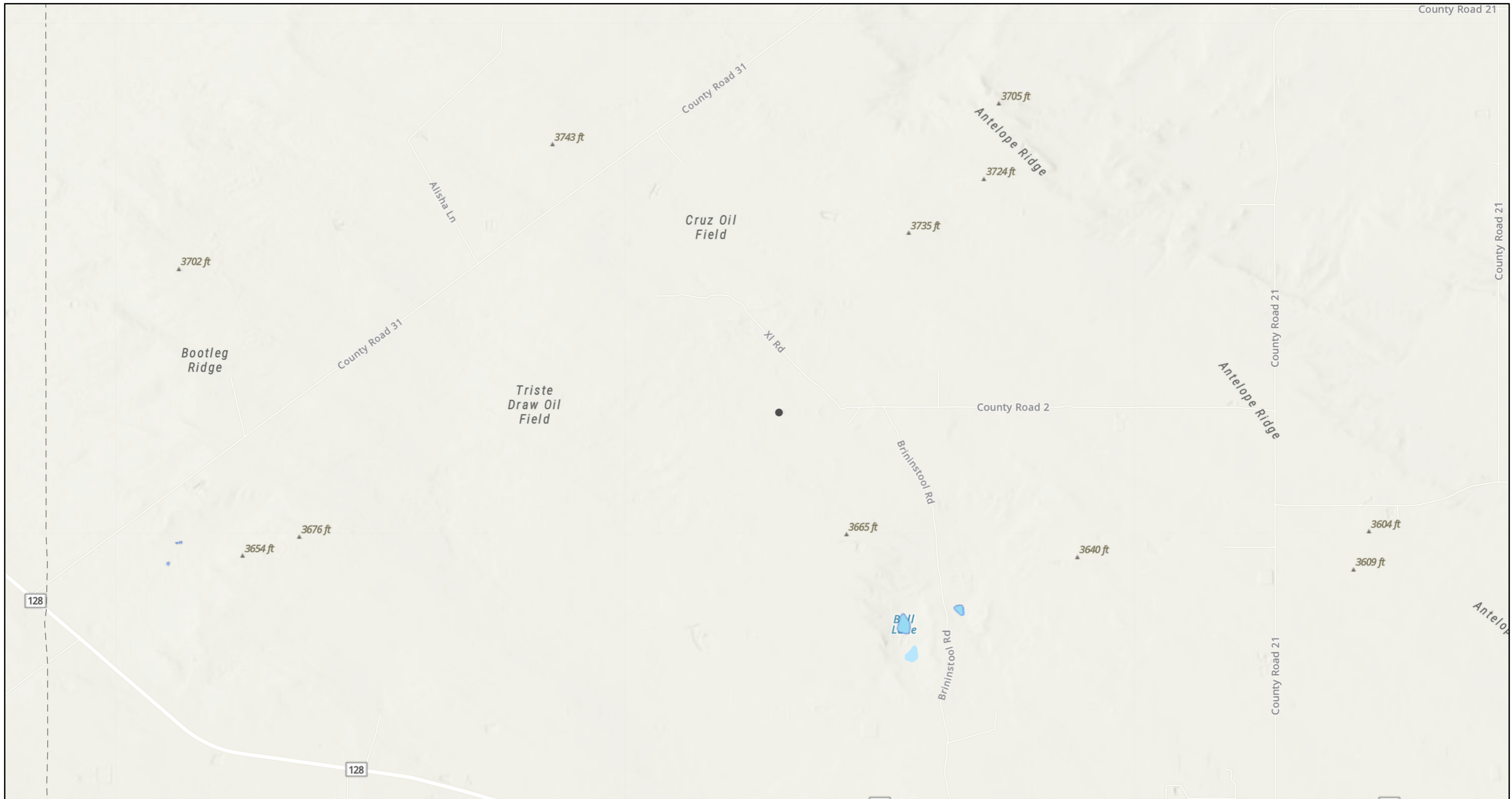
2/19/2026

World_Hillshade



Esri, NASA, NGA, USGS, FEMA, Sources: Esri, TomTom, Garmin, FAO, NOAA, USGS, (c) OpenStreetMap contributors, and the GIS User

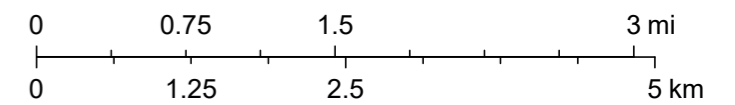
Hemlock BSH State CTB (12.07.2025)



2/19/2026, 10:00:06 AM

 OSW Water Bodys

1:72,224





Esri, NASA, NGA, USGS, FEMA, Sources: Esri, TomTom, Garmin, FAO, NOAA, USGS, © OpenStreetMap contributors, and the GIS User Community, NM OSE









U.S. Fish and Wildlife Service, National Standards and Support Team, wetlands_team@fws.gov

February 19, 2026

Wetlands

-  Estuarine and Marine Deepwater
-  Estuarine and Marine Wetland

-  Freshwater Emergent Wetland
-  Freshwater Forested/Shrub Wetland
-  Freshwater Pond

-  Lake
-  Other
-  Riverine

This map is for general reference only. The US Fish and Wildlife Service is not responsible for the accuracy or currentness of the base data shown on this map. All wetlands related data should be used in accordance with the layer metadata found on the Wetlands Mapper web site.

Sante Fe Main Office
Phone: (505) 476-3441

General Information
Phone: (505) 629-6116

Online Phone Directory
<https://www.emnrd.nm.gov/ocd/contact-us>

State of New Mexico
Energy, Minerals and Natural Resources
Oil Conservation Division
1220 S. St Francis Dr.
Santa Fe, NM 87505

QUESTIONS

Action 568691

QUESTIONS

Operator: EOG RESOURCES INC 5509 Champions Drive Midland, TX 79706	OGRID: 7377
	Action Number: 568691
	Action Type: [C-141] Remediation Closure Request C-141 (C-141-v-Closure)

QUESTIONS

Prerequisites	
Incident ID (n#)	nAPP2534555562
Incident Name	NAPP2534555562 HEMLOCK BSH STATE CTB @ C-32-23S-33E
Incident Type	Produced Water Release
Incident Status	Remediation Closure Report Received

Location of Release Source	
<i>Please answer all the questions in this group.</i>	
Site Name	Hemlock BSH State CTB
Date Release Discovered	12/07/2025
Surface Owner	State

Incident Details	
<i>Please answer all the questions in this group.</i>	
Incident Type	Produced Water Release
Did this release result in a fire or is the result of a fire	No
Did this release result in any injuries	No
Has this release reached or does it have a reasonable probability of reaching a watercourse	No
Has this release endangered or does it have a reasonable probability of endangering public health	No
Has this release substantially damaged or will it substantially damage property or the environment	No
Is this release of a volume that is or may with reasonable probability be detrimental to fresh water	No

Nature and Volume of Release	
<i>Material(s) released, please answer all that apply below. Any calculations or specific justifications for the volumes provided should be attached to the follow-up C-141 submission.</i>	
Crude Oil Released (bbls) Details	Not answered.
Produced Water Released (bbls) Details	Cause: Equipment Failure Pump Produced Water Released: 15 BBL Recovered: 15 BBL Lost: 0 BBL.
Is the concentration of chloride in the produced water >10,000 mg/l	Yes
Condensate Released (bbls) Details	Not answered.
Natural Gas Vented (Mcf) Details	Not answered.
Natural Gas Flared (Mcf) Details	Not answered.
Other Released Details	Not answered.
Are there additional details for the questions above (i.e. any answer containing Other, Specify, Unknown, and/or Fire, or any negative lost amounts)	Release of produced water inside lined secondary containment. All fluids recovered.

Sante Fe Main Office
Phone: (505) 476-3441

General Information
Phone: (505) 629-6116

Online Phone Directory
<https://www.emnrd.nm.gov/ocd/contact-us>

State of New Mexico
Energy, Minerals and Natural Resources
Oil Conservation Division
1220 S. St Francis Dr.
Santa Fe, NM 87505

QUESTIONS, Page 2

Action 568691

QUESTIONS (continued)

Operator: EOG RESOURCES INC 5509 Champions Drive Midland, TX 79706	OGRID: 7377
	Action Number: 568691
	Action Type: [C-141] Remediation Closure Request C-141 (C-141-v-Closure)

QUESTIONS

Nature and Volume of Release (continued)	
Is this a gas only submission (i.e. only significant Mcf values reported)	No, according to supplied volumes this does not appear to be a "gas only" report.
Was this a major release as defined by Subsection A of 19.15.29.7 NMAC	No
Reasons why this would be considered a submission for a notification of a major release	<i>Unavailable.</i>
<i>With the implementation of the 19.15.27 NMAC (05/25/2021), venting and/or flaring of natural gas (i.e. gas only) are to be submitted on the C-129 form.</i>	

Initial Response

The responsible party must undertake the following actions immediately unless they could create a safety hazard that would result in injury.

The source of the release has been stopped	True
The impacted area has been secured to protect human health and the environment	True
Released materials have been contained via the use of berms or dikes, absorbent pads, or other containment devices	True
All free liquids and recoverable materials have been removed and managed appropriately	True
If all the actions described above have not been undertaken, explain why	<i>Not answered.</i>

Per Paragraph (4) of Subsection B of 19.15.29.8 NMAC the responsible party may commence remediation immediately after discovery of a release. If remediation has begun, please prepare and attach a narrative of actions to date in the follow-up C-141 submission. If remedial efforts have been successfully completed or if the release occurred within a lined containment area (see Subparagraph (a) of Paragraph (5) of Subsection A of 19.15.29.11 NMAC), please prepare and attach all information needed for closure evaluation in the follow-up C-141 submission.

I hereby certify that the information given above is true and complete to the best of my knowledge and understand that pursuant to OCD rules and regulations all operators are required to report and/or file certain release notifications and perform corrective actions for releases which may endanger public health or the environment. The acceptance of a C-141 report by the OCD does not relieve the operator of liability should their operations have failed to adequately investigate and remediate contamination that pose a threat to groundwater, surface water, human health or the environment. In addition, OCD acceptance of a C-141 report does not relieve the operator of responsibility for compliance with any other federal, state, or local laws and/or regulations.

I hereby agree and sign off to the above statement	Name: Hadlie Stout Title: Environmental Representative II Email: Hadlie_stout@eogresources.com Date: 03/30/2026
--	--

Sante Fe Main Office
Phone: (505) 476-3441

General Information
Phone: (505) 629-6116

Online Phone Directory
<https://www.emnrd.nm.gov/ocd/contact-us>

State of New Mexico
Energy, Minerals and Natural Resources
Oil Conservation Division
1220 S. St Francis Dr.
Santa Fe, NM 87505

QUESTIONS, Page 3

Action 568691

QUESTIONS (continued)

Operator: EOG RESOURCES INC 5509 Champions Drive Midland, TX 79706	OGRID: 7377
	Action Number: 568691
	Action Type: [C-141] Remediation Closure Request C-141 (C-141-v-Closure)

QUESTIONS

Site Characterization	
<i>Please answer all the questions in this group (only required when seeking remediation plan approval and beyond). This information must be provided to the appropriate district office no later than 90 days after the release discovery date.</i>	
What is the shallowest depth to groundwater beneath the area affected by the release in feet below ground surface (ft bgs)	Between 100 and 500 (ft.)
What method was used to determine the depth to ground water	NM OSE iWaters Database Search
Did this release impact groundwater or surface water	No
What is the minimum distance, between the closest lateral extents of the release and the following surface areas:	
A continuously flowing watercourse or any other significant watercourse	Greater than 5 (mi.)
Any lakebed, sinkhole, or playa lake (measured from the ordinary high-water mark)	Between 1 and 5 (mi.)
An occupied permanent residence, school, hospital, institution, or church	Greater than 5 (mi.)
A spring or a private domestic fresh water well used by less than five households for domestic or stock watering purposes	Greater than 5 (mi.)
Any other fresh water well or spring	Greater than 5 (mi.)
Incorporated municipal boundaries or a defined municipal fresh water well field	Greater than 5 (mi.)
A wetland	Between 1 and 5 (mi.)
A subsurface mine	Greater than 5 (mi.)
An (non-karst) unstable area	Greater than 5 (mi.)
Categorize the risk of this well / site being in a karst geology	Low
A 100-year floodplain	Greater than 5 (mi.)
Did the release impact areas not on an exploration, development, production, or storage site	No

Remediation Plan	
<i>Please answer all the questions that apply or are indicated. This information must be provided to the appropriate district office no later than 90 days after the release discovery date.</i>	
Requesting a remediation plan approval with this submission	Yes
<i>Attach a comprehensive report demonstrating the lateral and vertical extents of soil contamination associated with the release have been determined, pursuant to 19.15.29.11 NMAC and 19.15.29.13 NMAC.</i>	
Have the lateral and vertical extents of contamination been fully delineated	Yes
Was this release entirely contained within a lined containment area	Yes
<i>Per Subsection B of 19.15.29.11 NMAC unless the site characterization report includes completed efforts at remediation, the report must include a proposed remediation plan in accordance with 19.15.29.12 NMAC, which includes the anticipated timelines for beginning and completing the remediation.</i>	
On what estimated date will the remediation commence	12/07/2025
On what date will (or did) the final sampling or liner inspection occur	02/25/2026
On what date will (or was) the remediation complete(d)	02/25/2026
What is the estimated surface area (in square feet) that will be remediated	0
What is the estimated volume (in cubic yards) that will be remediated	0
<i>These estimated dates and measurements are recognized to be the best guess or calculation at the time of submission and may (be) change(d) over time as more remediation efforts are completed.</i>	
<i>The OCD recognizes that proposed remediation measures may have to be minimally adjusted in accordance with the physical realities encountered during remediation. If the responsible party has any need to significantly deviate from the remediation plan proposed, then it should consult with the division to determine if another remediation plan submission is required.</i>	

Sante Fe Main Office
Phone: (505) 476-3441

General Information
Phone: (505) 629-6116

Online Phone Directory
<https://www.emnrd.nm.gov/ocd/contact-us>

**State of New Mexico
Energy, Minerals and Natural Resources
Oil Conservation Division
1220 S. St Francis Dr.
Santa Fe, NM 87505**

QUESTIONS, Page 4

Action 568691

QUESTIONS (continued)

Operator: EOG RESOURCES INC 5509 Champions Drive Midland, TX 79706	OGRID: 7377
	Action Number: 568691
	Action Type: [C-141] Remediation Closure Request C-141 (C-141-v-Closure)

QUESTIONS

Remediation Plan (continued)

Please answer all the questions that apply or are indicated. This information must be provided to the appropriate district office no later than 90 days after the release discovery date.

This remediation will (or is expected to) utilize the following processes to remediate / reduce contaminants:

(Select all answers below that apply.)

Is (or was) there affected material present needing to be removed	Yes
Is (or was) there a power wash of the lined containment area (to be) performed	Yes
OTHER (Non-listed remedial process)	Yes
Other Non-listed Remedial Process. Please specify	Removal of pea gravel from within the lined containment

Per Subsection B of 19.15.29.11 NMAC unless the site characterization report includes completed efforts at remediation, the report must include a proposed remediation plan in accordance with 19.15.29.12 NMAC, which includes the anticipated timelines for beginning and completing the remediation.

I hereby certify that the information given above is true and complete to the best of my knowledge and understand that pursuant to OCD rules and regulations all operators are required to report and/or file certain release notifications and perform corrective actions for releases which may endanger public health or the environment. The acceptance of a C-141 report by the OCD does not relieve the operator of liability should their operations have failed to adequately investigate and remediate contamination that pose a threat to groundwater, surface water, human health or the environment. In addition, OCD acceptance of a C-141 report does not relieve the operator of responsibility for compliance with any other federal, state, or local laws and/or regulations.

I hereby agree and sign off to the above statement	Name: Hadlie Stout Title: Environmental Representative II Email: Hadlie_stout@eogresources.com Date: 03/30/2026
--	--

The OCD recognizes that proposed remediation measures may have to be minimally adjusted in accordance with the physical realities encountered during remediation. If the responsible party has any need to significantly deviate from the remediation plan proposed, then it should consult with the division to determine if another remediation plan submission is required.

Sante Fe Main Office
Phone: (505) 476-3441

General Information
Phone: (505) 629-6116

Online Phone Directory
<https://www.emnrd.nm.gov/ocd/contact-us>

State of New Mexico
Energy, Minerals and Natural Resources
Oil Conservation Division
1220 S. St Francis Dr.
Santa Fe, NM 87505

QUESTIONS, Page 6

Action 568691

QUESTIONS (continued)

Operator: EOG RESOURCES INC 5509 Champions Drive Midland, TX 79706	OGRID: 7377
	Action Number: 568691
	Action Type: [C-141] Remediation Closure Request C-141 (C-141-v-Closure)

QUESTIONS

Liner Inspection Information	
Last liner inspection notification (C-141L) recorded	556630
Liner inspection date pursuant to Subparagraph (a) of Paragraph (5) of Subsection A of 19.15.29.11 NMAC	02/25/2026
Was all the impacted materials removed from the liner	Yes
What was the liner inspection surface area in square feet	600

Remediation Closure Request	
<i>Only answer the questions in this group if seeking remediation closure for this release because all remediation steps have been completed.</i>	
Requesting a remediation closure approval with this submission	Yes
Have the lateral and vertical extents of contamination been fully delineated	Yes
Was this release entirely contained within a lined containment area	Yes
What was the total surface area (in square feet) remediated	0
What was the total volume (cubic yards) remediated	0
Summarize any additional remediation activities not included by answers (above)	Removal of pea gravel and power washing of containment

The responsible party must attach information demonstrating they have complied with all applicable closure requirements and any conditions or directives of the OCD. This demonstration should be in the form of a comprehensive report (in .pdf format) including a scaled site map, sampling diagrams, relevant field notes, photographs of any excavation prior to backfilling, laboratory data including chain of custody documents of final sampling, and a narrative of the remedial activities. Refer to 19.15.29.12 NMAC.

I hereby certify that the information given above is true and complete to the best of my knowledge and understand that pursuant to OCD rules and regulations all operators are required to report and/or file certain release notifications and perform corrective actions for releases which may endanger public health or the environment. The acceptance of a C-141 report by the OCD does not relieve the operator of liability should their operations have failed to adequately investigate and remediate contamination that pose a threat to groundwater, surface water, human health or the environment. In addition, OCD acceptance of a C-141 report does not relieve the operator of responsibility for compliance with any other federal, state, or local laws and/or regulations. The responsible party acknowledges they must substantially restore, reclaim, and re-vegetate the impacted surface area to the conditions that existed prior to the release or their final land use in accordance with 19.15.29.13 NMAC including notification to the OCD when reclamation and re-vegetation are complete.

I hereby agree and sign off to the above statement	Name: Hadlie Stout Title: Environmental Representative II Email: Hadlie_stout@eogresources.com Date: 03/30/2026
--	--

Sante Fe Main Office
Phone: (505) 476-3441

General Information
Phone: (505) 629-6116

Online Phone Directory
<https://www.emnrd.nm.gov/ocd/contact-us>

State of New Mexico
Energy, Minerals and Natural Resources
Oil Conservation Division
1220 S. St Francis Dr.
Santa Fe, NM 87505

CONDITIONS

Action 568691

CONDITIONS

Operator: EOG RESOURCES INC 5509 Champions Drive Midland, TX 79706	OGRID: 7377
	Action Number: 568691
	Action Type: [C-141] Remediation Closure Request C-141 (C-141-v-Closure)

CONDITIONS

Created By	Condition	Condition Date
nvelez	Liner inspection approved, release resolved. Restoration complete.	3/31/2026