



## SITE INFORMATION

---

**Closure Report**  
**Salado Draw 23 Central Tank Battery (03.21.2026)**  
**Incident ID: nAPP2608050377**  
**Lea County, New Mexico**  
**Unit N, S14, T26S, R32E**  
**32.035793, -103.646698**

**Crude Oil & Produced Water Release**  
**Point of Release: Power Failure and Overflow of Production Tank into Lined Containment**  
**Release Date: 03.21.2026**  
**Volume Released: 29 Barrels of Crude Oil and 85 Barrels of Produced Water**  
**Volume Recovered: 28 Barrels of Crude Oil and 85 Barrels of Produced Water**

**CARMONA RESOURCES**



**Prepared for:**  
**Chevron U.S.A, Inc.**  
**6301 Deauville Blvd**  
**Midland, Texas 7970**

**Prepared by:**  
**Carmona Resources, LLC**  
**310 West Wall Street**  
**Suite 500**  
**Midland, Texas 79701**

310 West Wall Street, Suite 500  
Midland TX, 79701  
432.813.1992



## TABLE OF CONTENTS

---

### 1.0 SITE INFORMATION AND BACKGROUND

### 2.0 SITE CHARACTERIZATION AND GROUNDWATER

### 3.0 NMAC REGULATORY CRITERIA

### 4.0 LINER INSPECTION ACTIVITIES

### 5.0 CONCLUSIONS

### FIGURES

FIGURE 1      OVERVIEW                      FIGURE 2      TOPOGRAPHIC

FIGURE 3      CONTAINMENT

### APPENDICES

APPENDIX A      PHOTOS

APPENDIX B      NMOCD CORRESPONDENCE

APPENDIX C      SITE CHARACTERIZATION AND GROUNDWATER



March 27, 2026

Robert Hamlet  
Environmental Specialist – Advanced  
Oil Conservation Division, District I  
506 W. Texas Ave  
Artesia, New Mexico 88210

Re: **Closure Report**  
**Salado Draw 23 Central Tank Battery (03.21.2026)**  
**Incident ID: nAPP2608050377**  
**Chevron U.S.A., Inc.**  
**Site Location: Unit N, S14, T26S, R32E**  
**(Lat 32.035793°, Long -103.646698°)**  
**Lea County, New Mexico**

Mr. Hamlet:

At the request of Chevron U.S.A., Inc (Chevron), Carmona Resources LLC, has prepared this letter to document the liner inspection activities conducted at the Salado Draw 23 Central Tank Battery (Site) located at 32.035793, -103.646698 in Lea County, New Mexico (Figures 1 and 2).

### **1.0 Site Information and Background**

Based on the initial C-141 obtained from the New Mexico Oil Conservation Division (NMOCD), the release was discovered on March 21, 2026, due to power failure and overflow of production tank into a lined containment. It resulted in approximately twenty-nine (29) barrels of crude oil and eighty-five (85) barrels of produced water being released inside the lined containment, with twenty-eight (28) barrels of crude oil and eighty-five (85) barrels of produced water recovered. The containment area is approximately 8,700 sq ft. The containment boundaries are shown in Figure 3. The initial C-141 form is attached in Appendix B.

### **2.0 Site Characterization and Groundwater**

The site is located within a medium karst area. Based on a review of the New Mexico Office of State Engineers and USGS databases, there are no known water sources 0.50 miles of the location. The nearest groundwater determination bore is approximately 0.42 miles Northeast of the site in S14, T26S, R32E and was drilled in 2024. The groundwater determination bore was drilled to a depth to groundwater of 112' feet below the ground surface (ft bgs). After 72 hours, the bore was gauged and the presence of water was not detected. A copy of the associated Summary Report is attached in Appendix C.

### **3.0 NMAC Regulatory Criteria**

Per the NMOCD regulatory criteria established in 19.15.29.12 NMAC, the following criteria were utilized in assessing and remediating the site.

- Benzene: 10 milligrams per kilogram (mg/kg).
- Benzene, toluene, ethylbenzene, and total xylenes (BTEX): 50 mg/kg.
- TPH: 100 mg/kg (GRO + DRO + MRO).
- Chloride: 600 mg/kg.



#### **4.0 Liner Inspection Activities**

Prior to Carmona Resources conducting a Liner Inspection, Chevron contractors removed all fluid and washed the containment. The NMOCD division office was notified via NMOCD portal on March 24, 2026, per Subsection D of 19.15.29.12 NMAC. See Appendix B for the NMOCD correspondence prior to performing the liner inspection. On March 27, 2026, Carmona Resources, LLC conducted liner inspection activities to assess the tank batteries lined containment integrity and determined there were no integrity issues. During that time, it was confirmed that all unrecovered fluid from the initial release had been captured in the gravel and was removed. Refer to the Photolog in Appendix A. Figure 3 shows the containment area outline.

#### **5.0 Conclusions**

Based on the inspection from the remediation of the lined containment, no further actions are required at the site. Chevron formally requests the closure of the spill. If you have any questions regarding this report or need additional information, please contact us at 432-813-8988.

Sincerely,

**Carmona Resources, LLC**

Ashton Thielke  
Environmental Manager

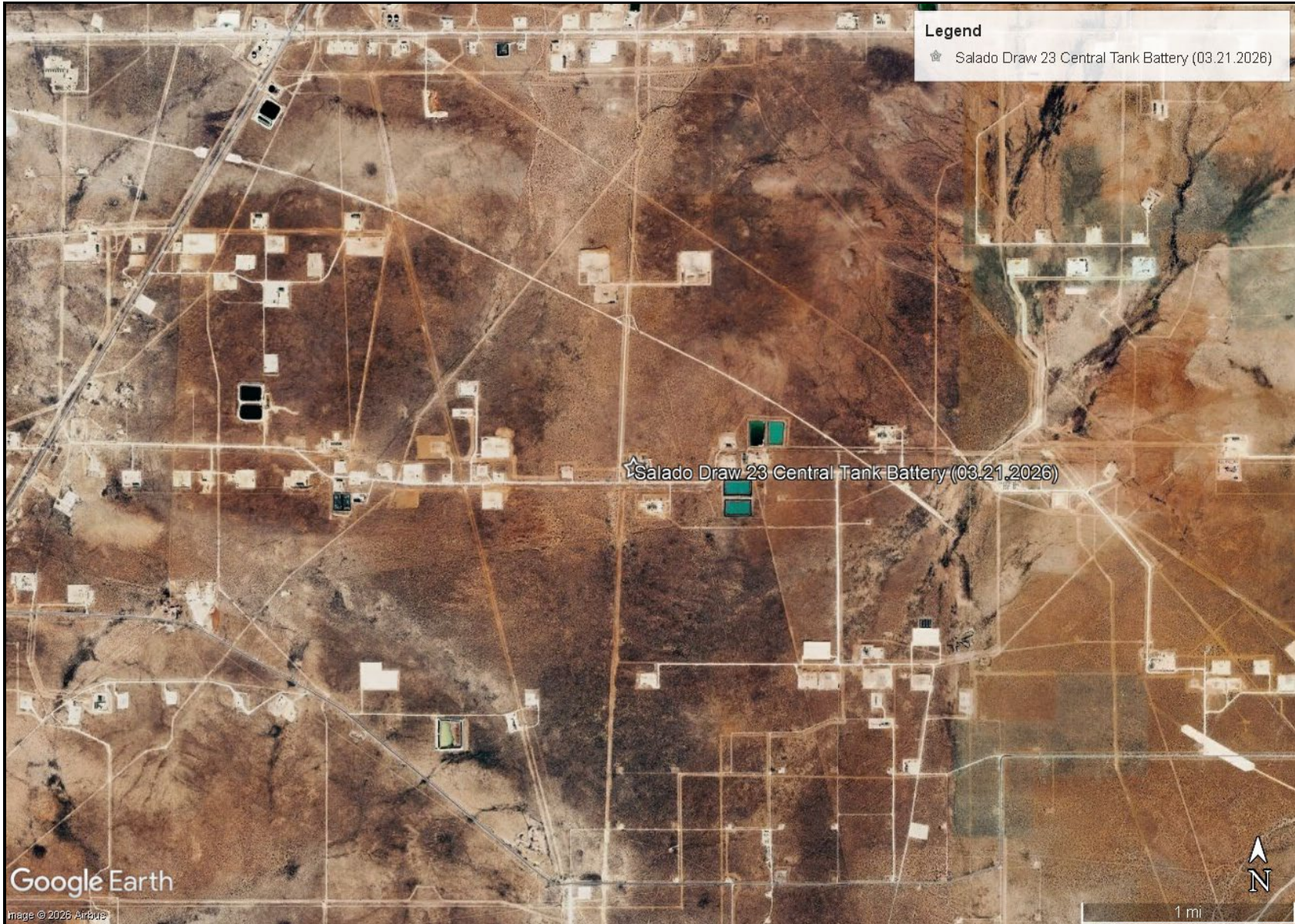
Riley Plogger  
Project Manager




# FIGURES

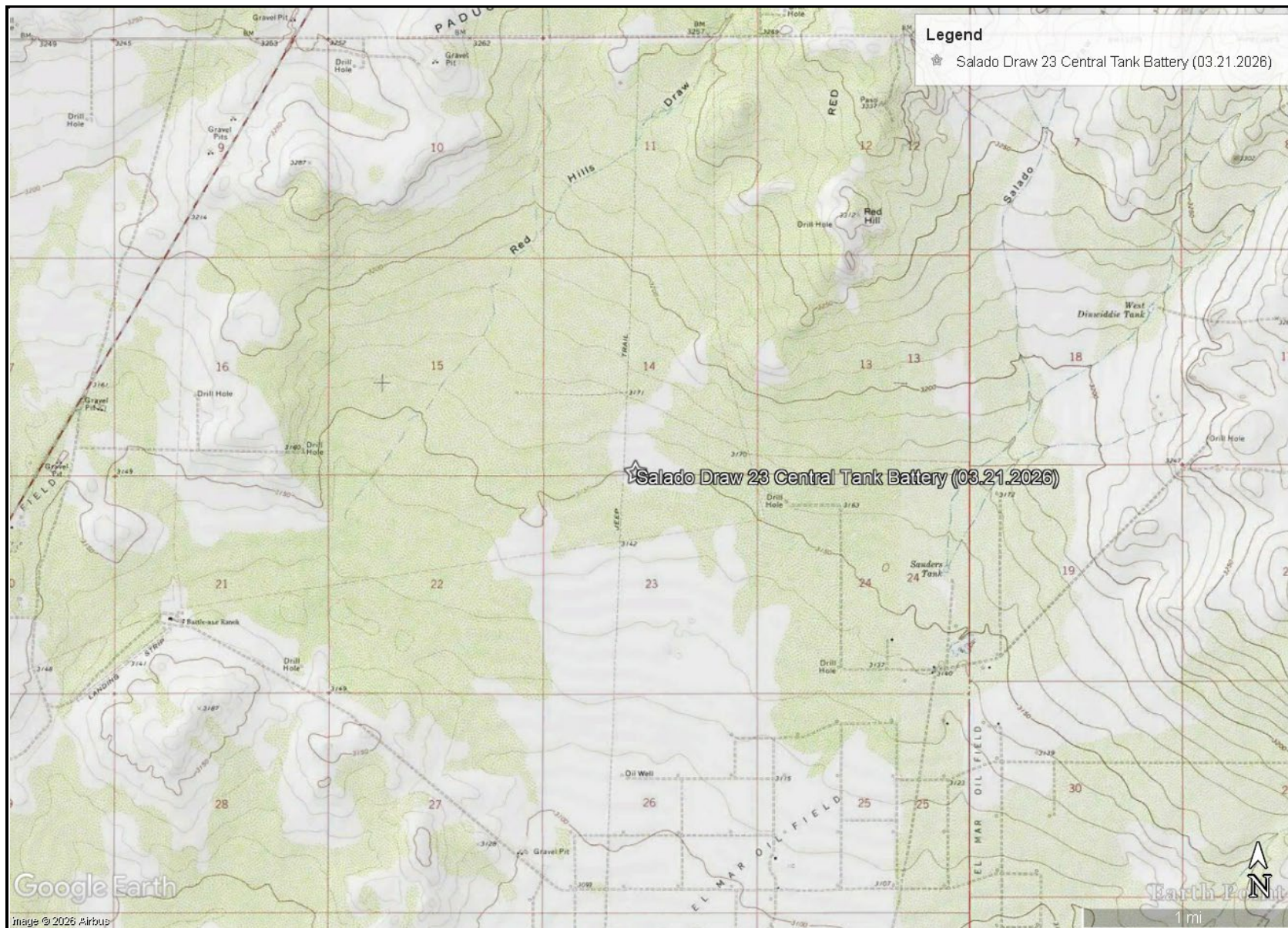
CARMONA RESOURCES





<p>OVERVIEW MAP CHEVRON U.S.A., INC SALADO DRAW 23 CENTRAL TANK BATTERY (03.21.2026) LEA COUNTY, NEW MEXICO 32.035793°, -103.646698°</p>	<p>CARMONA RESOURCES </p>	<p>FIGURE 1</p>
--	--	-----------------





TOPOGRAPHIC MAP  
 CHEVRON U.S.A., INC  
 SALADO DRAW 23 CENTRAL TANK BATTERY (03.21.2026)  
 LEA COUNTY, NEW MEXICO  
 32.035793°, -103.646698°

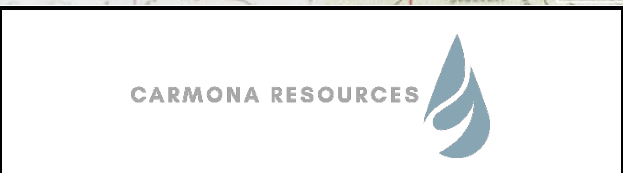
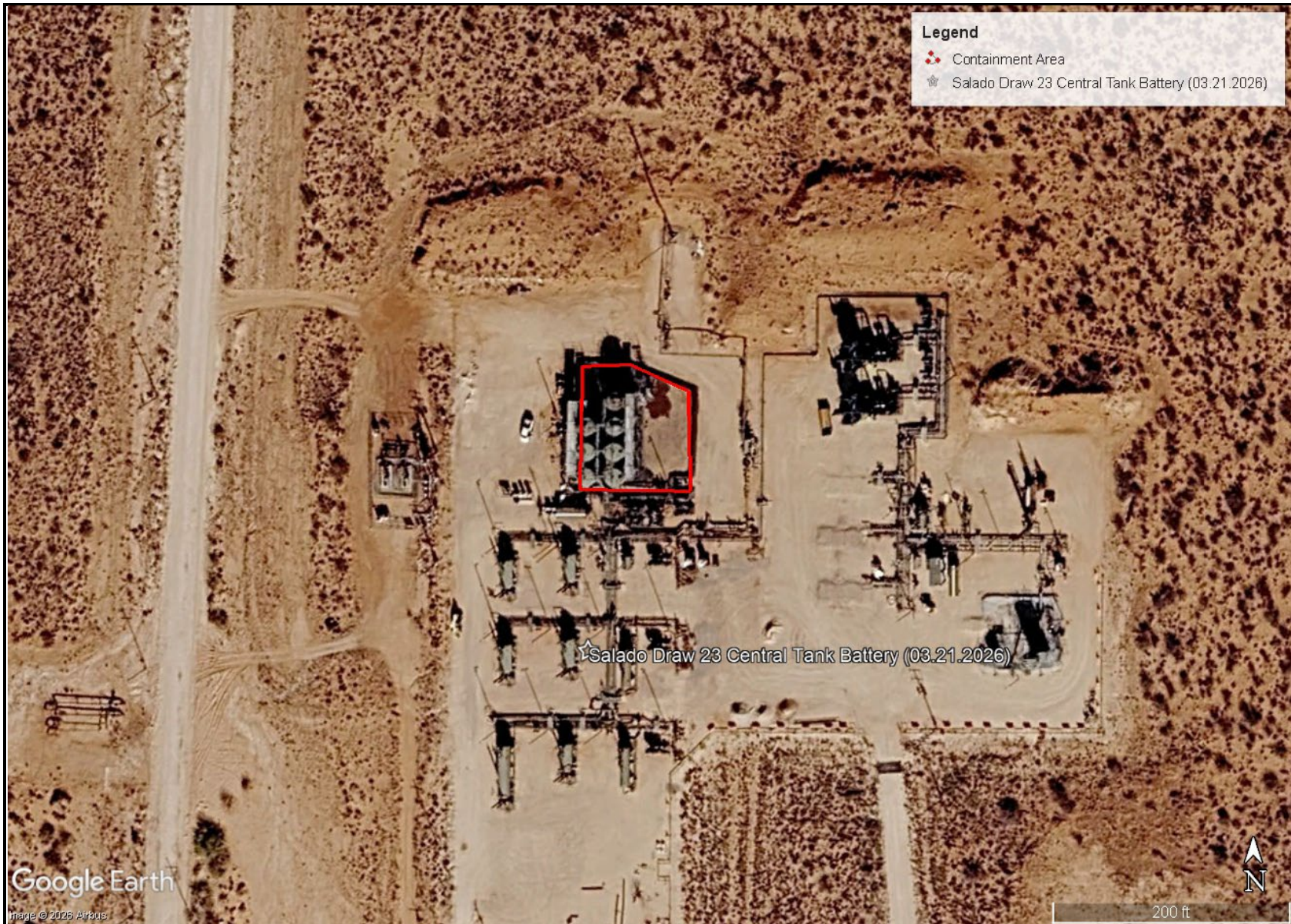



FIGURE 2





<p>CONTAINMENT MAP CHEVRON U.S.A, INC SALADO DRAW 23 CENTRAL TANK BATTERY (03.21.2026) LEA COUNTY, NEW MEXICO 32.035793°, -103.646698°</p>	<p>CARMONA RESOURCES </p>	<p>FIGURE 3</p>
--	--	-----------------

# APPENDIX A

CARMONA RESOURCES





# PHOTOGRAPHIC LOG

## Chevron USA

### Photograph No. 1

**Facility:** Salado Draw 23 Central Tank Battery (03.21.2026)

**County:** Lea County, New Mexico

**Description:**  
View Northwest of facility sign.

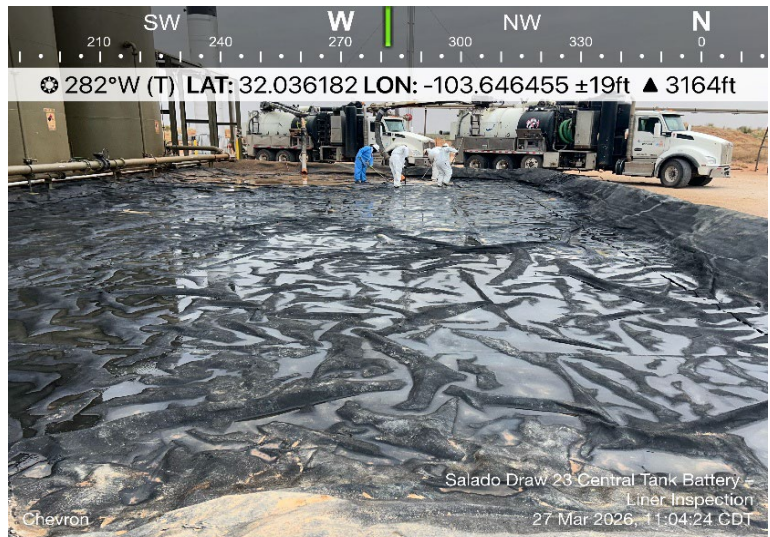


### Photograph No. 2

**Facility:** Salado Draw 23 Central Tank Battery (03.21.2026)

**County:** Lea County, New Mexico

**Description:**  
View West of the exposed liner being washed.

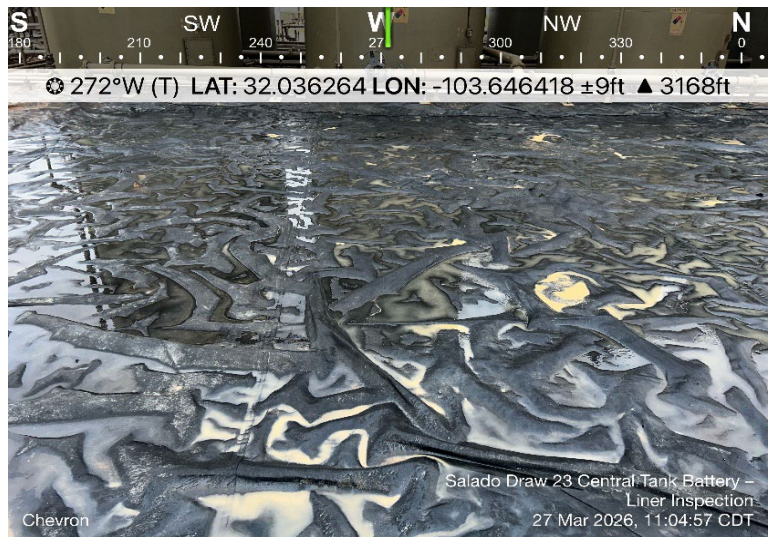


### Photograph No. 3

**Facility:** Salado Draw 23 Central Tank Battery (03.21.2026)

**County:** Lea County, New Mexico

**Description:**  
View West of the exposed liner being washed.





# PHOTOGRAPHIC LOG

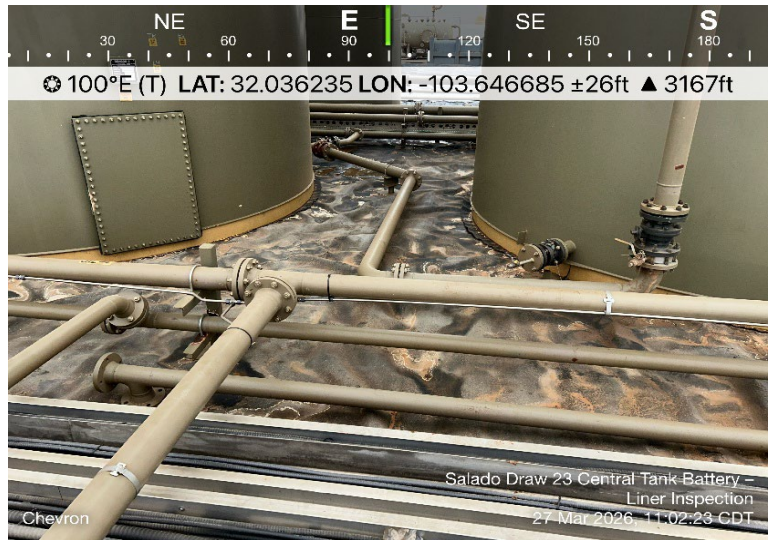
## Chevron USA

### Photograph No. 4

**Facility:** Salado Draw 23 Central Tank Battery (03.21.2026)

**County:** Lea County, New Mexico

**Description:**  
View East of the exposed liner after being washed.

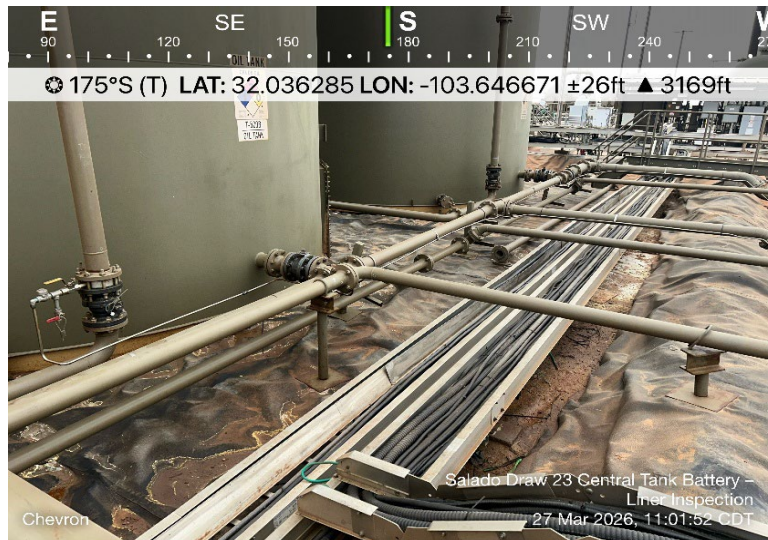


### Photograph No. 5

**Facility:** Salado Draw 23 Central Tank Battery (03.21.2026)

**County:** Lea County, New Mexico

**Description:**  
View South of the exposed liner after being washed.



### Photograph No. 6

**Facility:** Salado Draw 23 Central Tank Battery (03.21.2026)

**County:** Lea County, New Mexico

**Description:**  
View East of the exposed liner after being washed.





# PHOTOGRAPHIC LOG

## Chevron USA

### Photograph No. 7

**Facility:** Salado Draw 23 Central Tank Battery (03.21.2026)

**County:** Lea County, New Mexico

**Description:**  
View Northeast of the exposed liner after being washed.

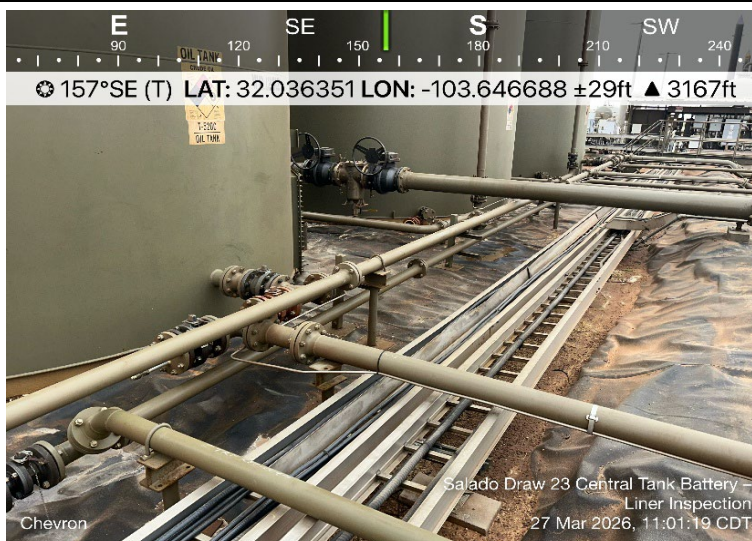


### Photograph No. 8

**Facility:** Salado Draw 23 Central Tank Battery (03.21.2026)

**County:** Lea County, New Mexico

**Description:**  
View Southeast of the exposed liner after being washed.



### Photograph No. 9

**Facility:** Salado Draw 23 Central Tank Battery (03.21.2026)

**County:** Lea County, New Mexico

**Description:**  
View East of the exposed liner after being washed.





## APPENDIX B

CARMONA RESOURCES



Sante Fe Main Office  
Phone: (505) 476-3441

General Information  
Phone: (505) 629-6116

Online Phone Directory  
<https://www.emnrd.nm.gov/ocd/contact-us>

**State of New Mexico**  
**Energy, Minerals and Natural Resources**  
**Oil Conservation Division**  
**1220 S. St Francis Dr.**  
**Santa Fe, NM 87505**

QUESTIONS

Action 565339

**QUESTIONS**

Operator: CHEVRON U S A INC 6301 Deauville Blvd Midland, TX 79706	OGRID: 4323
	Action Number: 565339
	Action Type: [NOTIFY] Notification Of Release (NOR)

**QUESTIONS**

<b>Location of Release Source</b>	
<i>Please answer all the questions in this group.</i>	
Site Name	Salado Draw 23 Central Tank Battery
Date Release Discovered	03/21/2026
Surface Owner	Federal

<b>Incident Details</b>	
<i>Please answer all the questions in this group.</i>	
Incident Type	Oil Release
Did this release result in a fire or is the result of a fire	No
Did this release result in any injuries	No
Has this release reached or does it have a reasonable probability of reaching a watercourse	No
Has this release endangered or does it have a reasonable probability of endangering public health	No
Has this release substantially damaged or will it substantially damage property or the environment	No
Is this release of a volume that is or may with reasonable probability be detrimental to fresh water	No

<b>Nature and Volume of Release</b>	
<i>Material(s) released, please answer all that apply below. Any calculations or specific justifications for the volumes provided should be attached to the follow-up C-141 submission.</i>	
Crude Oil Released (bbls) Details	Cause: Power Failure   Tank (Any)   Crude Oil   Released: 29 BBL   Recovered: 28 BBL   Lost: 1 BBL.
Produced Water Released (bbls) Details	Cause: Power Failure   Tank (Any)   Produced Water   Released: 85 BBL   Recovered: 85 BBL   Lost: 0 BBL.
Is the concentration of chloride in the produced water >10,000 mg/l	No
Condensate Released (bbls) Details	Not answered.
Natural Gas Vented (Mcf) Details	Not answered.
Natural Gas Flared (Mcf) Details	Not answered.
Other Released Details	Not answered.
Are there additional details for the questions above (i.e. any answer containing Other, Specify, Unknown, and/or Fire, or any negative lost amounts)	Not answered.

Sante Fe Main Office  
Phone: (505) 476-3441

General Information  
Phone: (505) 629-6116

Online Phone Directory  
<https://www.emnrd.nm.gov/ocd/contact-us>

**State of New Mexico**  
**Energy, Minerals and Natural Resources**  
**Oil Conservation Division**  
**1220 S. St Francis Dr.**  
**Santa Fe, NM 87505**

QUESTIONS, Page 2

Action 565339

**QUESTIONS (continued)**

Operator: CHEVRON U S A INC 6301 Deauville Blvd Midland, TX 79706	OGRID: 4323
	Action Number: 565339
	Action Type: [NOTIFY] Notification Of Release (NOR)

**QUESTIONS**

<b>Nature and Volume of Release (continued)</b>	
Is this a gas only submission (i.e. only significant Mcf values reported)	<b>No, according to supplied volumes this does not appear to be a "gas only" report.</b>
Was this a major release as defined by Subsection A of 19.15.29.7 NMAC	<b>Yes</b>
Reasons why this would be considered a submission for a notification of a major release	<b>From paragraph A. "Major release" determine using: (1) an unauthorized release of a volume, excluding gases, of 25 barrels or more.</b>
<i>With the implementation of the 19.15.27 NMAC (05/25/2021), venting and/or flaring of natural gas (i.e. gas only) are to be submitted on the C-129 form.</i>	

**Initial Response**

*The responsible party must undertake the following actions immediately unless they could create a safety hazard that would result in injury.*

The source of the release has been stopped	True
The impacted area has been secured to protect human health and the environment	True
Released materials have been contained via the use of berms or dikes, absorbent pads, or other containment devices	True
All free liquids and recoverable materials have been removed and managed appropriately	True
If all the actions described above have not been undertaken, explain why	Not answered.

*Per Paragraph 4 of Subsection B of 19.15.29.8 NMAC the responsible party may commence remediation immediately after discovery of a release. If remediation has begun, please prepare and attach a narrative of actions to date in the follow-up C-141 submission. If remedial efforts have been successfully completed or if the release occurred within a lined containment area (see 19.15.29.11(A)(5)(a) NMAC), please prepare and attach all information needed for closure evaluation in the follow-up C-141 submission.*

Sante Fe Main Office  
Phone: (505) 476-3441

General Information  
Phone: (505) 629-6116

Online Phone Directory  
<https://www.emnrd.nm.gov/ocd/contact-us>

**State of New Mexico  
Energy, Minerals and Natural Resources  
Oil Conservation Division  
1220 S. St Francis Dr.  
Santa Fe, NM 87505**

ACKNOWLEDGMENTS

Action 565339

**ACKNOWLEDGMENTS**

Operator: CHEVRON U S A INC 6301 Deauville Blvd Midland, TX 79706	OGRID: 4323
	Action Number: 565339
	Action Type: [NOTIFY] Notification Of Release (NOR)

**ACKNOWLEDGMENTS**

<input checked="" type="checkbox"/>	I acknowledge that I am authorized to submit notification of a release on behalf of my operator.
<input checked="" type="checkbox"/>	I acknowledge that upon submitting this application, I will be creating a new incident file (assigned to my operator) to track the notification(s) and corrective action(s) for a release, pursuant to NMAC 19.15.29.
<input checked="" type="checkbox"/>	I acknowledge that creating a new incident file will require my operator to file subsequent submission(s) of form "C-141, Application for administrative approval of a release notification and corrective action", pursuant to NMAC 19.15.29.
<input checked="" type="checkbox"/>	I hereby certify that the information given above is true and complete to the best of my knowledge and understand that pursuant to OCD rules and regulations all operators are required to report and/or file certain release notifications and perform corrective actions for releases which may endanger public health or the environment.
<input checked="" type="checkbox"/>	I acknowledge the fact that the acceptance of a C-141 report by the OCD does not relieve the operator of liability should their operations have failed to adequately investigate and remediate contamination that pose a threat to groundwater, surface water, human health or the environment.
<input checked="" type="checkbox"/>	I acknowledge the fact that, in addition, OCD acceptance of a C-141 report does not relieve the operator of responsibility for compliance with any other federal, state, or local laws and/or regulations.

Sante Fe Main Office  
Phone: (505) 476-3441

General Information  
Phone: (505) 629-6116

Online Phone Directory  
<https://www.emnrd.nm.gov/ocd/contact-us>

**State of New Mexico**  
**Energy, Minerals and Natural Resources**  
**Oil Conservation Division**  
**1220 S. St Francis Dr.**  
**Santa Fe, NM 87505**

CONDITIONS

Action 565339

**CONDITIONS**

Operator: CHEVRON U S A INC 6301 Deauville Blvd Midland, TX 79706	OGRID: 4323
	Action Number: 565339
	Action Type: [NOTIFY] Notification Of Release (NOR)

**CONDITIONS**

Created By	Condition	Condition Date
jzemen	When submitting future reports regarding this release, please submit the calculations used or specific justification for the volumes reported on the initial C-141.	3/21/2026

PVSV

Oil Tanks

Time	Pressure (oz/in2)	SCFH (AIR)	MSCFH (A)	MSCFD Gas	MSCF Total G	kg/hr methan	Total Gas Vented from both PVSVs
Before Comms Loss - 30 minutes	7.1	6000	6.00	293.88	6.12	19.16	19.24 MSCF
Comms Reestablished - 1 hr	6.5	2200	2.20	107.76	4.49	7.02	Total Methane Vented from both PVSVs
Potential Highest rate	7.9	11000	11.00	538.78		35.12	66.36 kg

Oil Recovered: 28.32 bbl

Water Released: 84.956 bbl

Water Recovered: 84.5 bbl

Calculation Details									
Area	Shape	Secondary Containment	Standing Liquid Dimension	Standing Liquid Volume	Water Cut	Oil Volume	Penetration Depth	Water to Soil Volume	Water Volume
1	Rectangle	Berm	78 ft x 42 ft x 2 in	97.246 bbl	75%	24.312 bbl	0 in	0.000 bbl	72.934 bbl
2	Rectangle	Berm	60 ft x 6 ft x 3 in	16.030 bbl	75%	4.008 bbl	0 in	0.000 bbl	12.022 bbl
3	Rectangle	Berm	54 ft x 108 ft x .01 in	0.866 bbl	0%	0.866 bbl	0 in	0.000 bbl	
4				bbl	%	bbl		bbl	
5				bbl	%	bbl		bbl	
6				bbl	%	bbl		bbl	
7				bbl	%	bbl		bbl	
<b>Rec Vol</b>						28.32			84.5
<b>Total Vol</b>						29.186			84.956

Sante Fe Main Office  
Phone: (505) 476-3441

General Information  
Phone: (505) 629-6116

Online Phone Directory  
<https://www.emnrd.nm.gov/ocd/contact-us>

**State of New Mexico**  
**Energy, Minerals and Natural Resources**  
**Oil Conservation Division**  
**1220 S. St Francis Dr.**  
**Santa Fe, NM 87505**

QUESTIONS

Action 565882

**QUESTIONS**

Operator: CHEVRON U S A INC 6301 Deauville Blvd Midland, TX 79706	OGRID: 4323
	Action Number: 565882
	Action Type: [C-141] Initial C-141 (C-141-v-Initial)

**QUESTIONS**

<b>Prerequisites</b>	
Incident ID (n#)	nAPP2608050377
Incident Name	NAPP2608050377 SALADO DRAW 23 CENTRAL TANK BATTERY @ FAPP2134340195
Incident Type	Oil Release
Incident Status	Initial C-141 Received
Incident Facility	[fAPP2134340195] Salado Draw 23 Central Tank Battery

**Location of Release Source**

Please answer all the questions in this group.

Site Name	Salado Draw 23 Central Tank Battery
Date Release Discovered	03/21/2026
Surface Owner	Federal

**Incident Details**

Please answer all the questions in this group.

Incident Type	Oil Release
Did this release result in a fire or is the result of a fire	No
Did this release result in any injuries	No
Has this release reached or does it have a reasonable probability of reaching a watercourse	No
Has this release endangered or does it have a reasonable probability of endangering public health	No
Has this release substantially damaged or will it substantially damage property or the environment	No
Is this release of a volume that is or may with reasonable probability be detrimental to fresh water	No

**Nature and Volume of Release**

Material(s) released, please answer all that apply below. Any calculations or specific justifications for the volumes provided should be attached to the follow-up C-141 submission.

Crude Oil Released (bbls) Details	Cause: Power Failure   Tank (Any)   Crude Oil   Released: 29 BBL   Recovered: 28 BBL   Lost: 1 BBL.
Produced Water Released (bbls) Details	Cause: Power Failure   Tank (Any)   Produced Water   Released: 85 BBL   Recovered: 85 BBL   Lost: 0 BBL.
Is the concentration of chloride in the produced water >10,000 mg/l	No
Condensate Released (bbls) Details	Not answered.
Natural Gas Vented (Mcf) Details	Cause: Power Failure   Production Tank   Natural Gas Vented   Released: 19 Mcf   Recovered: 0 Mcf   Lost: 19 Mcf.
Natural Gas Flared (Mcf) Details	Not answered.
Other Released Details	Not answered.
Are there additional details for the questions above (i.e. any answer containing Other, Specify, Unknown, and/or Fire, or any negative lost amounts)	Lost 1 BBL of oil to gravel which will be removed prior to liner inspection.



Sante Fe Main Office  
Phone: (505) 476-3441

General Information  
Phone: (505) 629-6116

Online Phone Directory  
<https://www.emnrd.nm.gov/ocd/contact-us>

**State of New Mexico**  
**Energy, Minerals and Natural Resources**  
**Oil Conservation Division**  
**1220 S. St Francis Dr.**  
**Santa Fe, NM 87505**

QUESTIONS, Page 2

Action 565882

**QUESTIONS (continued)**

Operator: CHEVRON U S A INC 6301 Deauville Blvd Midland, TX 79706	OGRID: 4323
	Action Number: 565882
	Action Type: [C-141] Initial C-141 (C-141-v-Initial)

**QUESTIONS**

<b>Nature and Volume of Release (continued)</b>	
Is this a gas only submission (i.e. only significant Mcf values reported)	<b>No, according to supplied volumes this does not appear to be a "gas only" report.</b>
Was this a major release as defined by Subsection A of 19.15.29.7 NMAC	<b>Yes</b>
Reasons why this would be considered a submission for a notification of a major release	<b>From paragraph A. "Major release" determine using: (1) an unauthorized release of a volume, excluding gases, of 25 barrels or more.</b>

*With the implementation of the 19.15.27 NMAC (05/25/2021), venting and/or flaring of natural gas (i.e. gas only) are to be submitted on the C-129 form.*

**Initial Response**

*The responsible party must undertake the following actions immediately unless they could create a safety hazard that would result in injury.*

The source of the release has been stopped	True
The impacted area has been secured to protect human health and the environment	True
Released materials have been contained via the use of berms or dikes, absorbent pads, or other containment devices	True
All free liquids and recoverable materials have been removed and managed appropriately	True
If all the actions described above have not been undertaken, explain why	Not answered.

*Per Paragraph (4) of Subsection B of 19.15.29.8 NMAC the responsible party may commence remediation immediately after discovery of a release. If remediation has begun, please prepare and attach a narrative of actions to date in the follow-up C-141 submission. If remedial efforts have been successfully completed or if the release occurred within a lined containment area (see Subparagraph (a) of Paragraph (5) of Subsection A of 19.15.29.11 NMAC), please prepare and attach all information needed for closure evaluation in the follow-up C-141 submission.*

I hereby certify that the information given above is true and complete to the best of my knowledge and understand that pursuant to OCD rules and regulations all operators are required to report and/or file certain release notifications and perform corrective actions for releases which may endanger public health or the environment. The acceptance of a C-141 report by the OCD does not relieve the operator of liability should their operations have failed to adequately investigate and remediate contamination that pose a threat to groundwater, surface water, human health or the environment. In addition, OCD acceptance of a C-141 report does not relieve the operator of responsibility for compliance with any other federal, state, or local laws and/or regulations.

I hereby agree and sign off to the above statement	Name: Benjamin Bauman Title: Air Specialist Email: benjaminbauman@chevron.com Date: 03/24/2026
--	---

Sante Fe Main Office  
Phone: (505) 476-3441

General Information  
Phone: (505) 629-6116

Online Phone Directory  
<https://www.emnrd.nm.gov/ocd/contact-us>

**State of New Mexico  
Energy, Minerals and Natural Resources  
Oil Conservation Division  
1220 S. St Francis Dr.  
Santa Fe, NM 87505**

QUESTIONS, Page 3

Action 565882

**QUESTIONS (continued)**

Operator: CHEVRON U S A INC 6301 Deauville Blvd Midland, TX 79706	OGRID: 4323
	Action Number: 565882
	Action Type: [C-141] Initial C-141 (C-141-v-Initial)

**QUESTIONS**

<b>Site Characterization</b>	
<i>Please answer all the questions in this group (only required when seeking remediation plan approval and beyond). This information must be provided to the appropriate district office no later than 90 days after the release discovery date.</i>	
What is the shallowest depth to groundwater beneath the area affected by the release in feet below ground surface (ft bgs)	Not answered.
What method was used to determine the depth to ground water	Not answered.
Did this release impact groundwater or surface water	No
<b>What is the minimum distance, between the closest lateral extents of the release and the following surface areas:</b>	
A continuously flowing watercourse or any other significant watercourse	Not answered.
Any lakebed, sinkhole, or playa lake (measured from the ordinary high-water mark)	Not answered.
An occupied permanent residence, school, hospital, institution, or church	Not answered.
A spring or a private domestic fresh water well used by less than five households for domestic or stock watering purposes	Not answered.
Any other fresh water well or spring	Not answered.
Incorporated municipal boundaries or a defined municipal fresh water well field	Not answered.
A wetland	Not answered.
A subsurface mine	Not answered.
An (non-karst) unstable area	Not answered.
Categorize the risk of this well / site being in a karst geology	Not answered.
A 100-year floodplain	Not answered.
Did the release impact areas not on an exploration, development, production, or storage site	Not answered.

<b>Remediation Plan</b>	
<i>Please answer all the questions that apply or are indicated. This information must be provided to the appropriate district office no later than 90 days after the release discovery date.</i>	
Requesting a remediation plan approval with this submission	No
<i>The OCD recognizes that proposed remediation measures may have to be minimally adjusted in accordance with the physical realities encountered during remediation. If the responsible party has any need to significantly deviate from the remediation plan proposed, then it should consult with the division to determine if another remediation plan submission is required.</i>	

Sante Fe Main Office  
Phone: (505) 476-3441

General Information  
Phone: (505) 629-6116

Online Phone Directory  
<https://www.emnrd.nm.gov/ocd/contact-us>

**State of New Mexico**  
**Energy, Minerals and Natural Resources**  
**Oil Conservation Division**  
**1220 S. St Francis Dr.**  
**Santa Fe, NM 87505**

CONDITIONS

Action 565882

**CONDITIONS**

Operator: CHEVRON U S A INC 6301 Deauville Blvd Midland, TX 79706	OGRID: 4323
	Action Number: 565882
	Action Type: [C-141] Initial C-141 (C-141-v-Initial)

**CONDITIONS**

Created By	Condition	Condition Date
rhamlet	None	3/24/2026

Sante Fe Main Office  
Phone: (505) 476-3441

General Information  
Phone: (505) 629-6116

Online Phone Directory  
<https://www.emnrd.nm.gov/ocd/contact-us>

**State of New Mexico  
Energy, Minerals and Natural Resources  
Oil Conservation Division  
1220 S. St Francis Dr.  
Santa Fe, NM 87505**

QUESTIONS

Action 566129

**QUESTIONS**

Operator: CHEVRON U S A INC 6301 Deauville Blvd Midland, TX 79706	OGRID: 4323
	Action Number: 566129
	Action Type: [NOTIFY] Notification Of Liner Inspection (C-141L)

**QUESTIONS**

<b>Prerequisites</b>	
Incident ID (n#)	nAPP2608050377
Incident Name	NAPP2608050377 SALADO DRAW 23 CENTRAL TANK BATTERY @ FAPP2134340195
Incident Type	Oil Release
Incident Status	Initial C-141 Approved
Incident Facility	[fAPP2134340195] Salado Draw 23 Central Tank Battery

<b>Location of Release Source</b>	
Site Name	Salado Draw 23 Central Tank Battery
Date Release Discovered	03/21/2026
Surface Owner	Federal

<b>Liner Inspection Event Information</b>	
<i>Please answer all the questions in this group.</i>	
What is the liner inspection surface area in square feet	8,700
Have all the impacted materials been removed from the liner	Yes
Liner inspection date pursuant to Subparagraph (a) of Paragraph (5) of Subsection A of 19.15.29.11 NMAC	03/27/2026
Time liner inspection will commence	10:00 AM
Please provide any information necessary for observers to liner inspection	Carmona Resources – 432-813-8988
Please provide any information necessary for navigation to liner inspection site	32.036273°, -103.646555°

Sante Fe Main Office  
Phone: (505) 476-3441

General Information  
Phone: (505) 629-6116

Online Phone Directory  
<https://www.emnrd.nm.gov/ocd/contact-us>

**State of New Mexico**  
**Energy, Minerals and Natural Resources**  
**Oil Conservation Division**  
**1220 S. St Francis Dr.**  
**Santa Fe, NM 87505**

CONDITIONS

Action 566129

**CONDITIONS**

Operator: CHEVRON U S A INC 6301 Deauville Blvd Midland, TX 79706	OGRID: 4323
	Action Number: 566129
	Action Type: [NOTIFY] Notification Of Liner Inspection (C-141L)

**CONDITIONS**

Created By	Condition	Condition Date
bbauman	Failure to notify the OCD of liner inspections including any changes in date/time per the requirements of 19.15.29.11.A(5)(a)(ii) NMAC, may result in the inspection not being accepted.	3/24/2026



# Liner Integrity Certification

The following serves to verify that the affected liner has been inspected and found to be in serviceable condition in accordance with 19.15.29.11 A.(5)(a)(i-ii) of the New Mexico Administrative Code.

Facility ID: fAPP2134340195

Date: 03.27.2026

Incident ID(s): nAPP2608050377

- Responsible Party has visually inspected the liner.
- Liner remains intact and was able to contain the leak in question.
- At least two business days' notice was given to the appropriate division district office before conducting the liner inspection.
- Photographs illustrating liner integrity are included.

## APPENDIX C

CARMONA RESOURCES





### Nearest Water Well

CHEVRON U S A INC

#### Legend

- 0.42 Miles
- 0.50 Mile Radius
- 0.86 Miles
- 1.04 Miles
- Groundwater Determination Bore
- Salado Draw 23 Central Tank Battery (03.21.2026)

115' GWDB - Drilled 2022

112' GWDB - Drilled 2024

Salado Draw 23 Central Tank Battery (03.21.2026)

101.5' GWDB - Drilled 2020





4000 ft



**Medium Karst**

CHEVRON U S A INC

**Legend**

-  Medium
-  Salado Draw 23 Central Tank Battery (03.21.2026)

Salado Draw 23 Central Tank Battery (03.21.2026)





# New Mexico Office of the State Engineer

## Water Column/Average Depth to Water

(A CLW##### in the POD suffix indicates the POD has been replaced & no longer serves a water right file.)

(R=POD has been replaced, O=orphaned, C=the file is closed)

(quarters are smallest to largest)

(meters)

(In feet)

POD Number	Code	Sub basin	County	Q64	Q16	Q4	Sec	Tws	Range	X	Y	Map	Distance	Well Depth	Depth Water	Water Column
<a href="#">C 04880 POD1</a>		CUB	LE	SW	SE	SE	14	26S	32E	628447.5	3545287.3	●	670	112		
<a href="#">C 04485 POD1</a>		CUB	LE	SE	NW	NW	12	26S	32E	629038.9	3548125.2	●	3180	55		
<a href="#">C 04549 POD1</a>		CUB	LE	NW	NW	NW	11	26S	32E	627111.4	3548316.9	●	3184	0	0	0
<a href="#">C 02271</a>	R	CUB	LE		NE	SW	21	26S	32E	624449.0	3544111.0 *	●	3507	150	125	25
<a href="#">C 03595 POD1</a>		CUB	LE	SE	NE	SW	21	26S	32E	624422.6	3544045.9	●	3553	280	180	100
<a href="#">C 02271 POD2</a>		CUB	LE	SW	NE	SW	21	26S	32E	624348.0	3544010.0 *	●	3635	270	250	20
<a href="#">C 02323</a>		C	LE	SW	NE	SW	21	26S	32E	624348.0	3544010.0 *	●	3635	405	405	0
<a href="#">C 03537 POD1</a>		CUB	LE	SW	NE	SW	21	26S	32E	624250.4	3543985.6	●	3735	850		

Average Depth to Water: **192 feet**

Minimum Depth: **0 feet**

Maximum Depth: **405 feet**

**Record Count: 8**

**UTM Filters (in meters):**

**Easting:** 627782.16

**Northing:** 3545203.67

**Radius:** 4000

\* UTM location was derived from PLSS - see Help

The data is furnished by the NMOSE/ISC and is accepted by the recipient with the expressed understanding that the OSE/ISC make no warranties, expressed or implied, concerning the accuracy, completeness, reliability, usability, or suitability for any particular purpose of the data.





# WELL RECORD & LOG

OFFICE OF THE STATE ENGINEER

[www.ose.state.nm.us](http://www.ose.state.nm.us)

<b>1. GENERAL AND WELL LOCATION</b>	OSE POD NO. (WELL NO.) Pod 1		WELL TAG ID NO.		OSE FILE NO(S). C-4880	
	WELL OWNER NAME(S) Chevron USA Inc. (Agent-H&R Enterprises, LLC/James Hawley)				PHONE (OPTIONAL)	
	WELL OWNER MAILING ADDRESS PO 3641				CITY Hobbs	STATE NM
					ZIP 88241	
	WELL LOCATION (FROM GPS)	DEGREES LATITUDE 32	MINUTES 02	SECONDS 11.3	N	* ACCURACY REQUIRED: ONE TENTH OF A SECOND
	LONGITUDE 103	38	22.7	W	* DATUM REQUIRED: WGS 84	
DESCRIPTION RELATING WELL LOCATION TO STREET ADDRESS AND COMMON LANDMARKS - PLSS (SECTION, TOWNSHIP, RANGE) WHERE AVAILABLE						

<b>2. DRILLING &amp; CASING INFORMATION</b>	LICENSE NO. WD-1862		NAME OF LICENSED DRILLER James Hawley			NAME OF WELL DRILLING COMPANY H&R Enterprises, LLC		
	DRILLING STARTED 9-24-24	DRILLING ENDED 9-24-24	DEPTH OF COMPLETED WELL (FT) 112'	BORE HOLE DEPTH (FT) 112'	DEPTH WATER FIRST ENCOUNTERED (FT) N/A			
	COMPLETED WELL IS: <input type="checkbox"/> ARTESIAN *add <input checked="" type="checkbox"/> DRY HOLE <input type="checkbox"/> SHALLOW (UNCONFINED) <small>Centralizer info below</small>				STATIC WATER LEVEL IN COMPLETED WELL (FT) N/A	DATE STATIC MEASURED 9-27-24		
	DRILLING FLUID: <input checked="" type="checkbox"/> AIR <input type="checkbox"/> MUD ADDITIVES - SPECIFY:							
	DRILLING METHOD: <input checked="" type="checkbox"/> ROTARY <input type="checkbox"/> HAMMER <input type="checkbox"/> CABLE TOOL <input type="checkbox"/> OTHER - SPECIFY:					CHECK HERE IF PITLESS ADAPTER IS INSTALLED <input type="checkbox"/>		
	DEPTH (feet bgl)		BORE HOLE DIAM (inches)	CASING MATERIAL AND/OR GRADE (include each casing string, and note sections of screen)	CASING CONNECTION TYPE (add coupling diameter)	CASING INSIDE DIAM. (inches)	CASING WALL THICKNESS (inches)	SLOT SIZE (inches)
	FROM	TO						
	0'	112'	6"	No Casing left in hole				

<b>3. ANNULAR MATERIAL</b>	DEPTH (feet bgl)		BORE HOLE DIAM. (inches)	LIST ANNULAR SEAL MATERIAL AND GRAVEL PACK SIZE- RANGE BY INTERVAL <i>*(if using Centralizers for Artesian wells- indicate the spacing below)</i>	AMOUNT (cubic feet)	METHOD OF PLACEMENT
	FROM	TO				
				N/A		

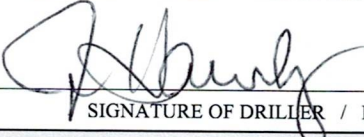
FOR OSE INTERNAL USE		WR-20 WELL RECORD & LOG (Version 09/22/2022)			
FILE NO.	POD NO.	TRN NO.			
LOCATION	WELL TAG ID NO.	PAGE 1 OF 2			

4. HYDROGEOLOGIC LOG OF WELL	DEPTH (feet bgl)		THICKNESS (feet)	COLOR AND TYPE OF MATERIAL ENCOUNTERED - INCLUDE WATER-BEARING CAVITIES OR FRACTURE ZONES (attach supplemental sheets to fully describe all units)	WATER BEARING? (YES / NO)	ESTIMATED YIELD FOR WATER-BEARING ZONES (gpm)
	FROM	TO				
	0'	25'	25'	Red Sand	Y ✓ N	
	25'	60'	35'	Reddish Brown Sandy Clay	Y ✓ N	
	60"	65"	5'	Pinkish Tan Sandy Clay	Y ✓ N	
	65'	70'	5'	Yellow Sandy Clay	Y ✓ N	
	70'	80'	10'	Reddish Brown Sandy Clay	Y ✓ N	
	80'	85'	5'	Pinkish Tan Sandy Clay	Y ✓ N	
	85'	112'	27'	Dark Red Sandy Clay	Y ✓ N	
					Y N	
					Y N	
					Y N	
					Y N	
					Y N	
					Y N	
					Y N	
					Y N	
					Y N	
					Y N	
					Y N	
					Y N	
					Y N	
					Y N	
					Y N	
					Y N	
METHOD USED TO ESTIMATE YIELD OF WATER-BEARING STRATA: <input type="checkbox"/> PUMP <input type="checkbox"/> AIR LIFT <input type="checkbox"/> BAILER <input type="checkbox"/> OTHER - SPECIFY: N/A					TOTAL ESTIMATED WELL YIELD (gpm): 0.00	

5. TEST; RIG SUPERVISION	WELL TEST	TEST RESULTS - ATTACH A COPY OF DATA COLLECTED DURING WELL TESTING, INCLUDING DISCHARGE METHOD, START TIME, END TIME, AND A TABLE SHOWING DISCHARGE AND DRAWDOWN OVER THE TESTING PERIOD.
	MISCELLANEOUS INFORMATION: Bore was gauged for water on 9-27-24, well bore was dry. Temporary well casing was removed. Borehole was backfilled to 10' BGS with drill cuttings, then hydrated Bentonite chips were poured from 10' BGS to surface.	
	PRINT NAME(S) OF DRILL RIG SUPERVISOR(S) THAT PROVIDED ONSITE SUPERVISION OF WELL CONSTRUCTION OTHER THAN LICENSEE: Nathan Smelcer	

6. SIGNATURE	THE UNDERSIGNED HEREBY CERTIFIES THAT, TO THE BEST OF HIS OR HER KNOWLEDGE AND BELIEF, THE FOREGOING IS A TRUE AND CORRECT RECORD OF THE ABOVE DESCRIBED HOLE AND THAT HE OR SHE WILL FILE THIS WELL RECORD WITH THE STATE ENGINEER AND THE PERMIT HOLDER WITHIN 30 DAYS AFTER COMPLETION OF WELL DRILLING:	
	 _____ SIGNATURE OF DRILLER / PRINT SIGNEE NAME	James Hawley

FOR OSE INTERNAL USE		WR-20 WELL RECORD & LOG (Version 09/22/2022)	
FILE NO.	POD NO.	TRN NO.	
LOCATION		WELL TAG ID NO.	PAGE 2 OF 2



**BORING RECORD**

GEOLOGIC UNIT	DEPTH	DESCRIPTION LITHOLOGIC	DESCRIPTION USCS	GRAPHIC LOG	PID READING										SAMPLE			REMARKS			
					PPM X _____										NUMBER	PID READING	RECOVERY DEPTH	BACKGROUND PID READING			
					2	4	6	8	10	12	14	16	18	SOIL : _____ PPM				SOIL : _____ PPM			
	0	Caliche, 5YR 8/1, White, Fill	Caliche																		
	5	Silty Sand, 5YR 5/6, Yellowish Red, Very Fine Grained Quartz, Poorly Sorted, Grain Imbedded with Caliche below 5', White, 5YR 8/1, Quartz Sand, Medium to Coarse Grade	SM																		
	10																				
	15																				
	20	Sand, 7.5YR 5/6, Strong Brown, Very Fine Grained Quartz Sand, Rounded, Poorly Sorted Reddish Brown, 5YR 5/4, Yellowish Red, 5YR 5/6, below 20', Dry	SW														2		20	12:47	
	25																				
	30	Thin Caliche Beds Below 25', Indurated, 5YR 7/0, Pink, Moderately Hard																			
	35	Sandstone Harder Below 30', Hard at 35'-40', Fine to Very Fine Grained Quartz Sand, Very Well Cemented	Sand Stone																		
	40	Shale (Red Bed), 2.5YR 4/6, Red, Very Fine Grained, Poorly Sorted, Weakly Cemented, Dry															3		40	13:19	
	45																				
	50																				
	55	Below 50' Interbedded with Thin Sandstone Beds, Moderately Hard, Dry	Shale														4		60	13:39	
	60																				
	65																				

- ONE CONTINUOUS AUGER SAMPLER
- STANDARD PENETRATION TEST
- UNDISTURBED SAMPLE
- WATER TABLE ( 24 HRS )
- WATER TABLE ( TIME OF BORING )
- LABORATORY TEST LOCATION
- PENETROMETER ( TONS/ SQ. FT )
- NO RECOVERY

JOB NUMBER : Chevron/ 20-0107-23  
 HOLE DIAMETER : 5"  
 LOCATION : Malestorm 15-1 SWD 103°39'35.87"N, 32°2'28.43"N  
 LAI GEOLOGIST : M. Larson  
 DRILLING CONTRACTOR : Scarborough Drilling  
 DRILLING METHOD : Air Rotary



DRILL DATE : 10/12/2022

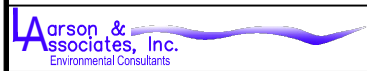
BORING NUMBER : BH-1

**BORING RECORD**

GEOLOGIC UNIT	DEPTH	Start: 12:39 Finish: 14:32 DESCRIPTION LITHOLOGIC	DESCRIPTION USCS	GRAPHIC LOG	PID READING								SAMPLE			REMARKS			
					PPM X _____								NUMBER	PID READING	RECOVERY	DEPTH	BACKGROUND PID READING SOIL : _____ PPM SOIL : _____ PPM		
					2	4	6	8	10	12	14	16						18	
	70	Sandstone, 2.5YR 5/9, Reddish Brown, Very Fine Grained Quartz Sand, Poorly Sorted, Soft to Moderate, Well Cemented	Sand Stone																
	75		Shale (Red Bed), 2.5YR 4/6 to 5/6, Red to Reddish Brown, Silty, Very Fine Grained Quartz Sand, Dry	Shale												5		80	13:56
	80																		
	85																		
	90																		
	95																		
	100																		
	105		Shale																
	110																		
	115	TD: 115'																	
	120																		
	125																		
	130																		

- ONE CONTINUOUS AUGER SAMPLER
- STANDARD PENETRATION TEST
- UNDISTURBED SAMPLE
- WATER TABLE ( 24 HRS )
- WATER TABLE ( TIME OF BORING )
- LABORATORY TEST LOCATION
- PENETROMETER ( TONS/ SQ. FT )
- NO RECOVERY

JOB NUMBER : Chevron/ 20-0107-23  
 HOLE DIAMETER : 5"  
 LOCATION : Malestorm 15-1 SWD 32°2'28.43"N, 103°39'35.87"W  
 LAI GEOLOGIST : M. Larson  
 DRILLING CONTRACTOR : Scarborough Drilling  
 DRILLING METHOD : Air Rotary



DRILL DATE : 10/12/2022

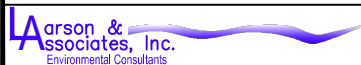
BORING NUMBER : BH-1

**BORING RECORD**

GEOLOGIC UNIT	DEPTH	Start: 10:35 MDT Finish: 15:15 DESCRIPTION LITHOLOGIC	DESCRIPTION USCS	GRAPHIC LOG	PID READING												SAMPLE		REMARKS					
					PPM X _____												NUMBER	PID READING	RECOVERY	DEPTH	BACKGROUND PID READING			
					2	4	6	8	10	12	14	16	18	SOIL : _____ PPM	SOIL : _____ PPM									
	0	Silty Sand, 5YR 5/4, Reddish Brown, Very Fine Grained Quartz Sand, Poorly Sorted, Dry	ML																					
	5																			1				
	10	Caliche, 2.5YR 8/3, Pink, Very Fine Grained, Poorly Sorted, Dry	Caliche																					
	15																							
	20																							
	25																			2				
	30	Silty Sand, 5YR 5/4, Reddish Brown, Fine Grained Quartz Sand with Caliche Clasts (~10mm), Poorly Sorted	ML																					
	35																			3				
	40	Caliche, 2.5YR 8/3, Pink, Very Fine Grained, Poorly Sorted with Subangular Clasts (~10mm)	Caliche																					
	45																							
	50																							
	55																			4				
	60	Silty Sand, 5YR 6/4, Light Reddish Brown, Very Fine Grained Quartz Sand, Poorly Sorted with Subangular Caliche Clasts (~10mm)	ML																					
	65																							

- ONE CONTINUOUS AUGER SAMPLER
- STANDARD PENETRATION TEST
- UNDISTURBED SAMPLE
- WATER TABLE ( 24 HRS )
- WATER TABLE ( TIME OF BORING )
- LABORATORY TEST LOCATION
- PENETROMETER ( TONS/ SQ. FT )
- NR NO RECOVERY

JOB NUMBER : Chevron/ 19-0180-01  
 HOLE DIAMETER : 2"  
 LOCATION : Salado Draw 24 CTB  
32.0250583° , -103.6342389°  
 LAI GEOLOGIST : E. Chavez  
 DRILLING CONTRACTOR : Scarborough  
 DRILLING METHOD : Air Rotary

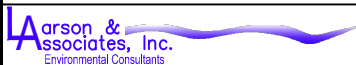


DRILL DATE : 04-14-2020

BORING NUMBER : SB-01

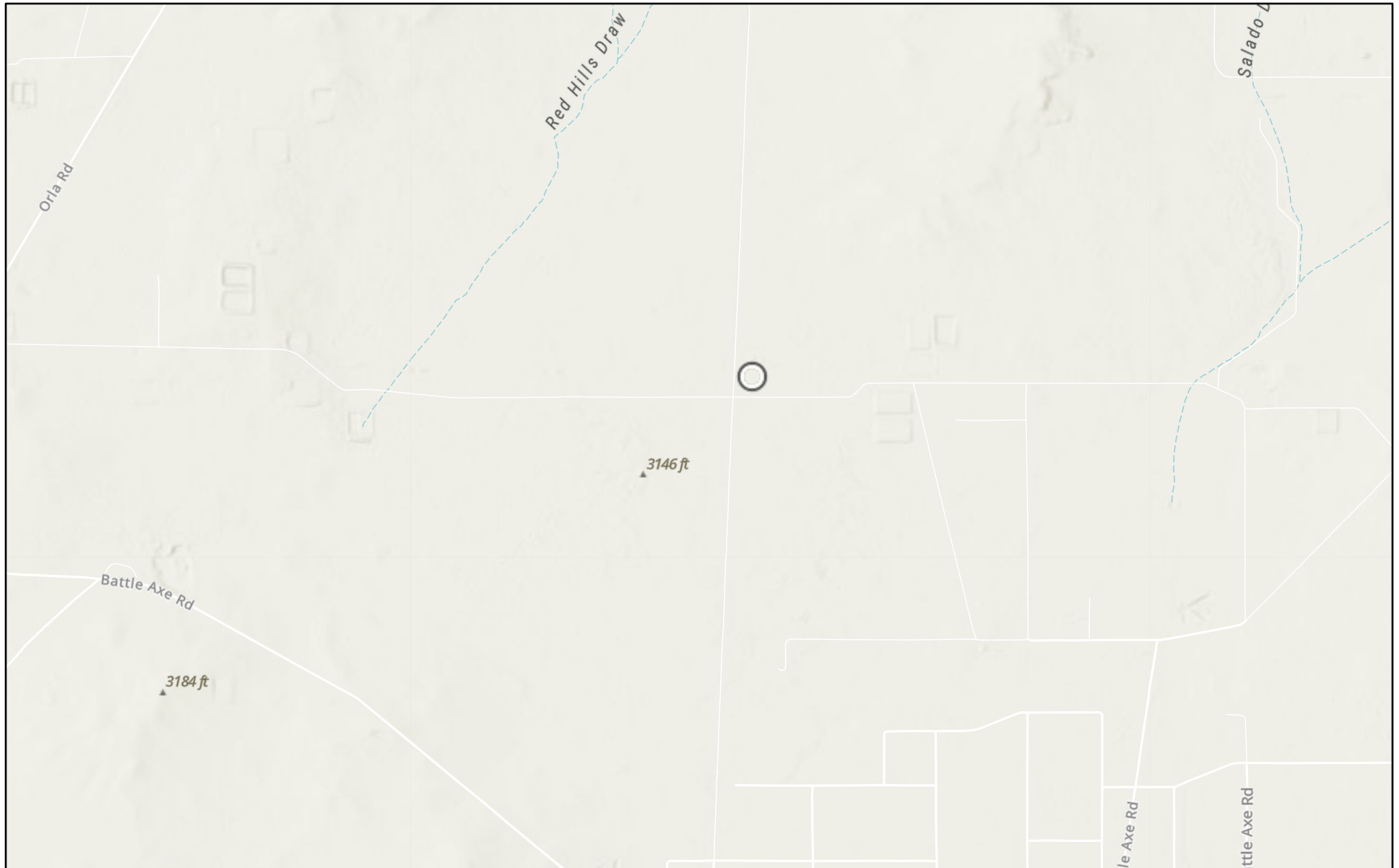
**BORING RECORD**

GEOLOGIC UNIT	DEPTH	Start: 10:35 MDT Finish: 15:15 DESCRIPTION LITHOLOGIC	DESCRIPTION USCS	GRAPHIC LOG	PID READING								SAMPLE			REMARKS	
					PPM X _____								NUMBER	PID READING	RECOVERY	BACKGROUND PID READING SOIL: _____ PPM SOIL: _____ PPM	
					2	4	6	8	10	12	14	16					18
	65													5		66	
	70	Silty Sand, 5YR 5/6, Yellowish Red, Very Fine Grained, Poorly Sorted with Subangular Caliche and Black Chert Clasts (~0.5mm)	ML													70	
	75															75	
	80															80	
	85															85	
	90	Silty Sand, 5YR 4/6, Yellowish Red, Fine Grained, Poorly Sorted with Subangular Caliche (~2mm)	ML													90	
	95															95	
	100															100	
	101.5	TD:101.5' Dry After 72 Hours												6		101.5	
	105															105	

<input type="checkbox"/> ONE CONTINUOUS AUGER SAMPLER <input type="checkbox"/> STANDARD PENETRATION TEST <input type="checkbox"/> UNDISTURBED SAMPLE <input type="checkbox"/> WATER TABLE ( 24 HRS )	<input type="checkbox"/> WATER TABLE ( TIME OF BORING ) <input type="checkbox"/> LABORATORY TEST LOCATION <input type="checkbox"/> PENETROMETER ( TONS/ SQ. FT ) NR NO RECOVERY	JOB NUMBER : <u>Chevron/ 19-0180-01</u> HOLE DIAMETER : <u>2"</u> LOCATION : <u>Salado Draw 24 CTB</u> <u>32.0250583°, -103.6342389°</u> LAI GEOLOGIST : <u>E. Chavez</u> DRILLING CONTRACTOR : <u>Scarborough</u> DRILLING METHOD : <u>Air Rotary</u>
	DRILL DATE : <u>04-14-2020</u>	BORING NUMBER : <u>SB-01</u>

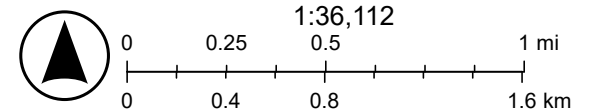


# Salado Draw 23 Central Tank Battery (03.21.2026)



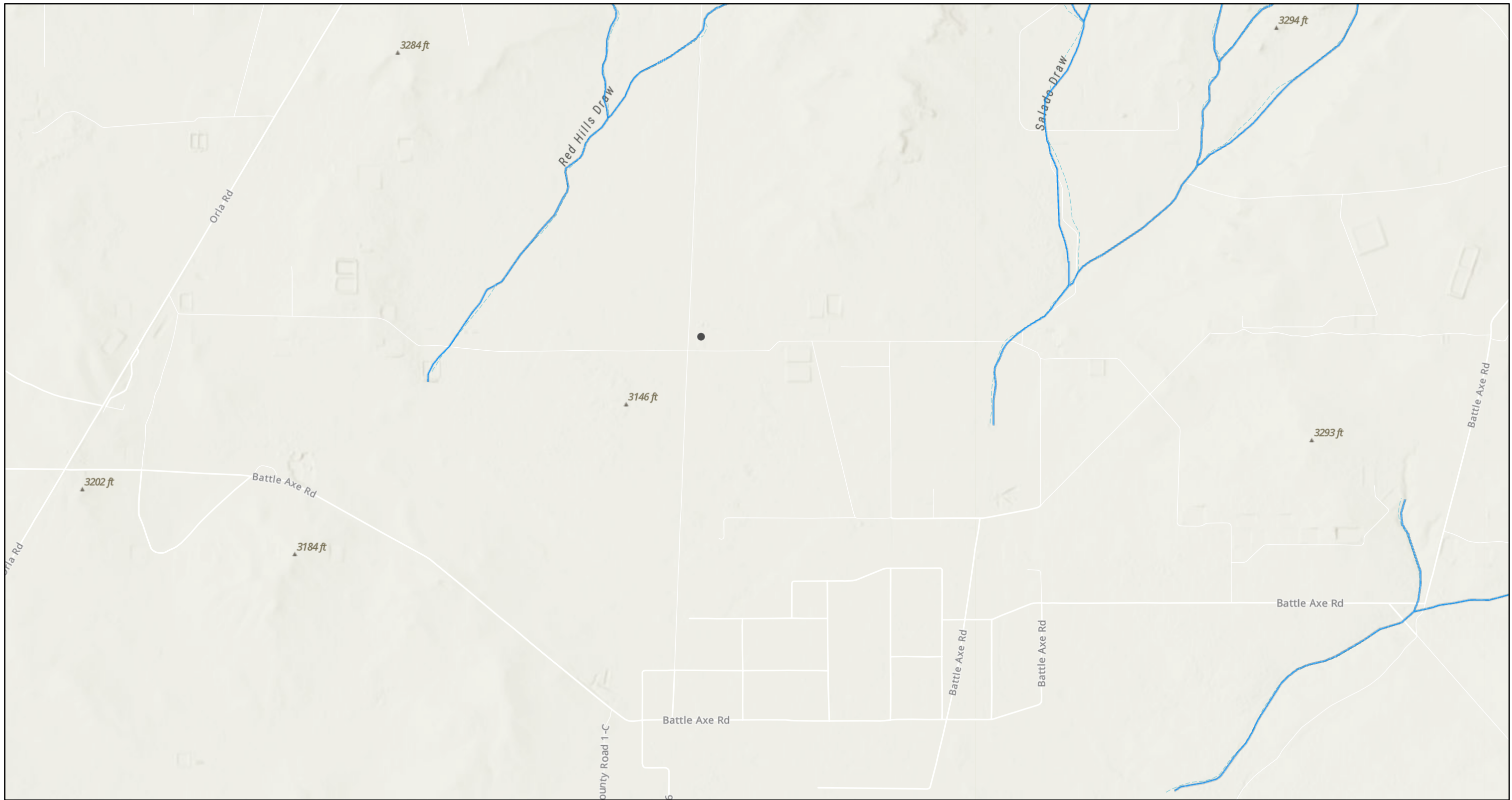
3/24/2026

World\_Hillshade



Source: FEMA, Esri, Sources: Esri, TomTom, Garmin, FAO, NOAA, USGS, (c) OpenStreetMap contributors, and the GIS User Community, Esri, NASA,

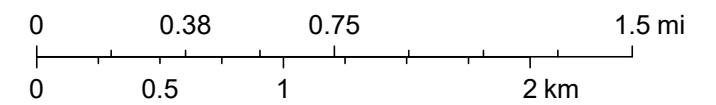
# Salado Draw 23 Central Tank Battery (03.21.2026)



3/24/2026, 11:09:14 AM

— OSE Streams

1:36,112



NM OSE, Sources: Esri, TomTom, Garmin, FAO, NOAA, USGS, © OpenStreetMap contributors, and the GIS User Community, Esri, NASA, NGA, USGS, FEMA



**U.S. Fish and Wildlife Service**  
**National Wetlands Inventory**



# Salado Draw 23 Central Tank Battery (03.2









U.S. Fish and Wildlife Service, National Standards and Support Team, wetlands\_team@fws.gov

March 24, 2026

**Wetlands**

-  Estuarine and Marine Deepwater
-  Estuarine and Marine Wetland

-  Freshwater Emergent Wetland
-  Freshwater Forested/Shrub Wetland
-  Freshwater Pond

-  Lake
-  Other
-  Riverine

This map is for general reference only. The US Fish and Wildlife Service is not responsible for the accuracy or currentness of the base data shown on this map. All wetlands related data should be used in accordance with the layer metadata found on the Wetlands Mapper web site.



Sante Fe Main Office  
Phone: (505) 476-3441

General Information  
Phone: (505) 629-6116

Online Phone Directory  
<https://www.emnrd.nm.gov/ocd/contact-us>

**State of New Mexico**  
**Energy, Minerals and Natural Resources**  
**Oil Conservation Division**  
**1220 S. St Francis Dr.**  
**Santa Fe, NM 87505**

QUESTIONS

Action 567618

**QUESTIONS**

Operator: CHEVRON U S A INC 6301 Deauville Blvd Midland, TX 79706	OGRID: 4323
	Action Number: 567618
	Action Type: [C-141] Remediation Closure Request C-141 (C-141-v-Closure)

**QUESTIONS**

<b>Prerequisites</b>	
Incident ID (n#)	nAPP2608050377
Incident Name	NAPP2608050377 SALADO DRAW 23 CENTRAL TANK BATTERY @ FAPP2134340195
Incident Type	Oil Release
Incident Status	Remediation Closure Report Received
Incident Facility	[fAPP2134340195] Salado Draw 23 Central Tank Battery

<b>Location of Release Source</b>	
<i>Please answer all the questions in this group.</i>	
Site Name	Salado Draw 23 Central Tank Battery
Date Release Discovered	03/21/2026
Surface Owner	Federal

<b>Incident Details</b>	
<i>Please answer all the questions in this group.</i>	
Incident Type	Oil Release
Did this release result in a fire or is the result of a fire	No
Did this release result in any injuries	No
Has this release reached or does it have a reasonable probability of reaching a watercourse	No
Has this release endangered or does it have a reasonable probability of endangering public health	No
Has this release substantially damaged or will it substantially damage property or the environment	No
Is this release of a volume that is or may with reasonable probability be detrimental to fresh water	No

<b>Nature and Volume of Release</b>	
<i>Material(s) released, please answer all that apply below. Any calculations or specific justifications for the volumes provided should be attached to the follow-up C-141 submission.</i>	
Crude Oil Released (bbls) Details	Cause: Power Failure   Tank (Any)   Crude Oil   Released: 29 BBL   Recovered: 28 BBL   Lost: 1 BBL.
Produced Water Released (bbls) Details	Cause: Power Failure   Tank (Any)   Produced Water   Released: 85 BBL   Recovered: 85 BBL   Lost: 0 BBL.
Is the concentration of chloride in the produced water >10,000 mg/l	No
Condensate Released (bbls) Details	Not answered.
Natural Gas Vented (Mcf) Details	Cause: Power Failure   Production Tank   Natural Gas Vented   Released: 19 MCF   Recovered: 0 MCF   Lost: 19 MCF.
Natural Gas Flared (Mcf) Details	Not answered.
Other Released Details	Not answered.
Are there additional details for the questions above (i.e. any answer containing Other, Specify, Unknown, and/or Fire, or any negative lost amounts)	Lost 1 BBL of oil to gravel which will be removed prior to liner inspection.

Sante Fe Main Office  
Phone: (505) 476-3441

General Information  
Phone: (505) 629-6116

Online Phone Directory  
<https://www.emnrd.nm.gov/ocd/contact-us>

**State of New Mexico**  
**Energy, Minerals and Natural Resources**  
**Oil Conservation Division**  
**1220 S. St Francis Dr.**  
**Santa Fe, NM 87505**

QUESTIONS, Page 2

Action 567618

**QUESTIONS (continued)**

Operator: CHEVRON U S A INC 6301 Deauville Blvd Midland, TX 79706	OGRID: 4323
	Action Number: 567618
	Action Type: [C-141] Remediation Closure Request C-141 (C-141-v-Closure)

**QUESTIONS**

<b>Nature and Volume of Release (continued)</b>	
Is this a gas only submission (i.e. only significant Mcf values reported)	<b>No, according to supplied volumes this does not appear to be a "gas only" report.</b>
Was this a major release as defined by Subsection A of 19.15.29.7 NMAC	<b>Yes</b>
Reasons why this would be considered a submission for a notification of a major release	<b>From paragraph A. "Major release" determine using: (1) an unauthorized release of a volume, excluding gases, of 25 barrels or more.</b>
<i>With the implementation of the 19.15.27 NMAC (05/25/2021), venting and/or flaring of natural gas (i.e. gas only) are to be submitted on the C-129 form.</i>	

**Initial Response**

*The responsible party must undertake the following actions immediately unless they could create a safety hazard that would result in injury.*

The source of the release has been stopped	<b>True</b>
The impacted area has been secured to protect human health and the environment	<b>True</b>
Released materials have been contained via the use of berms or dikes, absorbent pads, or other containment devices	<b>True</b>
All free liquids and recoverable materials have been removed and managed appropriately	<b>True</b>
If all the actions described above have not been undertaken, explain why	<i>Not answered.</i>

*Per Paragraph (4) of Subsection B of 19.15.29.8 NMAC the responsible party may commence remediation immediately after discovery of a release. If remediation has begun, please prepare and attach a narrative of actions to date in the follow-up C-141 submission. If remedial efforts have been successfully completed or if the release occurred within a lined containment area (see Subparagraph (a) of Paragraph (5) of Subsection A of 19.15.29.11 NMAC), please prepare and attach all information needed for closure evaluation in the follow-up C-141 submission.*

I hereby certify that the information given above is true and complete to the best of my knowledge and understand that pursuant to OCD rules and regulations all operators are required to report and/or file certain release notifications and perform corrective actions for releases which may endanger public health or the environment. The acceptance of a C-141 report by the OCD does not relieve the operator of liability should their operations have failed to adequately investigate and remediate contamination that pose a threat to groundwater, surface water, human health or the environment. In addition, OCD acceptance of a C-141 report does not relieve the operator of responsibility for compliance with any other federal, state, or local laws and/or regulations.

I hereby agree and sign off to the above statement	Name: Benjamin Bauman Title: Air Specialist Email: benjaminbauman@chevron.com Date: 03/27/2026
--	---

Sante Fe Main Office  
Phone: (505) 476-3441

General Information  
Phone: (505) 629-6116

Online Phone Directory  
<https://www.emnrd.nm.gov/ocd/contact-us>

**State of New Mexico**  
**Energy, Minerals and Natural Resources**  
**Oil Conservation Division**  
**1220 S. St Francis Dr.**  
**Santa Fe, NM 87505**

QUESTIONS, Page 3

Action 567618

**QUESTIONS (continued)**

Operator:  CHEVRON U S A INC 6301 Deauville Blvd Midland, TX 79706	OGRID: 4323
	Action Number: 567618
	Action Type: [C-141] Remediation Closure Request C-141 (C-141-v-Closure)

**QUESTIONS**

**Site Characterization**

Please answer all the questions in this group (only required when seeking remediation plan approval and beyond). This information must be provided to the appropriate district office no later than 90 days after the release discovery date.

What is the shallowest depth to groundwater beneath the area affected by the release in feet below ground surface (ft bgs)	Between 100 and 500 (ft.)
What method was used to determine the depth to ground water	NM OSE iWaters Database Search
Did this release impact groundwater or surface water	No
<b>What is the minimum distance, between the closest lateral extents of the release and the following surface areas:</b>	
A continuously flowing watercourse or any other significant watercourse	Between 1 and 5 (mi.)
Any lakebed, sinkhole, or playa lake (measured from the ordinary high-water mark)	Between 1 and 5 (mi.)
An occupied permanent residence, school, hospital, institution, or church	Between 1 and 5 (mi.)
A spring or a private domestic fresh water well used by less than five households for domestic or stock watering purposes	Between 1 and 5 (mi.)
Any other fresh water well or spring	Between 1 and 5 (mi.)
Incorporated municipal boundaries or a defined municipal fresh water well field	Greater than 5 (mi.)
A wetland	Between 1 and 5 (mi.)
A subsurface mine	Greater than 5 (mi.)
An (non-karst) unstable area	Greater than 5 (mi.)
Categorize the risk of this well / site being in a karst geology	Medium
A 100-year floodplain	Between 1 and 5 (mi.)
Did the release impact areas not on an exploration, development, production, or storage site	No

**Remediation Plan**

Please answer all the questions that apply or are indicated. This information must be provided to the appropriate district office no later than 90 days after the release discovery date.

Requesting a remediation plan approval with this submission	Yes
<i>Attach a comprehensive report demonstrating the lateral and vertical extents of soil contamination associated with the release have been determined, pursuant to 19.15.29.11 NMAC and 19.15.29.13 NMAC.</i>	
Have the lateral and vertical extents of contamination been fully delineated	Yes
Was this release entirely contained within a lined containment area	Yes
<i>Per Subsection B of 19.15.29.11 NMAC unless the site characterization report includes completed efforts at remediation, the report must include a proposed remediation plan in accordance with 19.15.29.12 NMAC, which includes the anticipated timelines for beginning and completing the remediation.</i>	
On what estimated date will the remediation commence	03/26/2026
On what date will (or did) the final sampling or liner inspection occur	03/27/2026
On what date will (or was) the remediation complete(d)	03/27/2026
What is the estimated surface area (in square feet) that will be remediated	8700
What is the estimated volume (in cubic yards) that will be remediated	0

*These estimated dates and measurements are recognized to be the best guess or calculation at the time of submission and may (be) change(d) over time as more remediation efforts are completed. The OCD recognizes that proposed remediation measures may have to be minimally adjusted in accordance with the physical realities encountered during remediation. If the responsible party has any need to significantly deviate from the remediation plan proposed, then it should consult with the division to determine if another remediation plan submission is required.*

Sante Fe Main Office  
Phone: (505) 476-3441

General Information  
Phone: (505) 629-6116

Online Phone Directory  
<https://www.emnrd.nm.gov/ocd/contact-us>

**State of New Mexico**  
**Energy, Minerals and Natural Resources**  
**Oil Conservation Division**  
**1220 S. St Francis Dr.**  
**Santa Fe, NM 87505**

QUESTIONS, Page 4

Action 567618

**QUESTIONS (continued)**

Operator: CHEVRON U S A INC 6301 Deauville Blvd Midland, TX 79706	OGRID: 4323
	Action Number: 567618
	Action Type: [C-141] Remediation Closure Request C-141 (C-141-v-Closure)

**QUESTIONS**

<b>Remediation Plan (continued)</b>	
<i>Please answer all the questions that apply or are indicated. This information must be provided to the appropriate district office no later than 90 days after the release discovery date.</i>	
<b>This remediation will (or is expected to) utilize the following processes to remediate / reduce contaminants:</b>	
<i>(Select all answers below that apply.)</i>	
Is (or was) there affected material present needing to be removed	Yes
Is (or was) there a power wash of the lined containment area (to be) performed	Yes
OTHER (Non-listed remedial process)	Not answered.
<i>Per Subsection B of 19.15.29.11 NMAC unless the site characterization report includes completed efforts at remediation, the report must include a proposed remediation plan in accordance with 19.15.29.12 NMAC, which includes the anticipated timelines for beginning and completing the remediation.</i>	
I hereby certify that the information given above is true and complete to the best of my knowledge and understand that pursuant to OCD rules and regulations all operators are required to report and/or file certain release notifications and perform corrective actions for releases which may endanger public health or the environment. The acceptance of a C-141 report by the OCD does not relieve the operator of liability should their operations have failed to adequately investigate and remediate contamination that pose a threat to groundwater, surface water, human health or the environment. In addition, OCD acceptance of a C-141 report does not relieve the operator of responsibility for compliance with any other federal, state, or local laws and/or regulations.	
I hereby agree and sign off to the above statement	Name: Benjamin Bauman Title: Air Specialist Email: benjaminbauman@chevron.com Date: 03/27/2026
<i>The OCD recognizes that proposed remediation measures may have to be minimally adjusted in accordance with the physical realities encountered during remediation. If the responsible party has any need to significantly deviate from the remediation plan proposed, then it should consult with the division to determine if another remediation plan submission is required.</i>	

Sante Fe Main Office  
Phone: (505) 476-3441

General Information  
Phone: (505) 629-6116

Online Phone Directory  
<https://www.emnrd.nm.gov/ocd/contact-us>

**State of New Mexico**  
**Energy, Minerals and Natural Resources**  
**Oil Conservation Division**  
**1220 S. St Francis Dr.**  
**Santa Fe, NM 87505**

QUESTIONS, Page 6

Action 567618

**QUESTIONS (continued)**

Operator: CHEVRON U S A INC 6301 Deauville Blvd Midland, TX 79706	OGRID: 4323
	Action Number: 567618
	Action Type: [C-141] Remediation Closure Request C-141 (C-141-v-Closure)

**QUESTIONS**

<b>Liner Inspection Information</b>	
Last liner inspection notification (C-141L) recorded	<b>566129</b>
Liner inspection date pursuant to Subparagraph (a) of Paragraph (5) of Subsection A of 19.15.29.11 NMAC	<b>03/27/2026</b>
Was all the impacted materials removed from the liner	<b>Yes</b>
What was the liner inspection surface area in square feet	<b>8700</b>

<b>Remediation Closure Request</b>	
<i>Only answer the questions in this group if seeking remediation closure for this release because all remediation steps have been completed.</i>	
Requesting a remediation closure approval with this submission	<b>Yes</b>
Have the lateral and vertical extents of contamination been fully delineated	<b>Yes</b>
Was this release entirely contained within a lined containment area	<b>Yes</b>
What was the total surface area (in square feet) remediated	<b>8700</b>
What was the total volume (cubic yards) remediated	<b>0</b>
Summarize any additional remediation activities not included by answers (above)	The entire containment area was power washed and all released fluid was removed from the containment prior to the linear inspection. Release was contained to the area on the far east side of the battery that is lower in elevation than the rest of the containment area that contains equipment. All fluid is designed to flow to the lower area to the east.

*The responsible party must attach information demonstrating they have complied with all applicable closure requirements and any conditions or directives of the OCD. This demonstration should be in the form of a comprehensive report (in .pdf format) including a scaled site map, sampling diagrams, relevant field notes, photographs of any excavation prior to backfilling, laboratory data including chain of custody documents of final sampling, and a narrative of the remedial activities. Refer to 19.15.29.12 NMAC.*

I hereby certify that the information given above is true and complete to the best of my knowledge and understand that pursuant to OCD rules and regulations all operators are required to report and/or file certain release notifications and perform corrective actions for releases which may endanger public health or the environment. The acceptance of a C-141 report by the OCD does not relieve the operator of liability should their operations have failed to adequately investigate and remediate contamination that pose a threat to groundwater, surface water, human health or the environment. In addition, OCD acceptance of a C-141 report does not relieve the operator of responsibility for compliance with any other federal, state, or local laws and/or regulations. The responsible party acknowledges they must substantially restore, reclaim, and re-vegetate the impacted surface area to the conditions that existed prior to the release or their final land use in accordance with 19.15.29.13 NMAC including notification to the OCD when reclamation and re-vegetation are complete.

I hereby agree and sign off to the above statement	Name: Benjamin Bauman Title: Air Specialist Email: benjaminbauman@chevron.com Date: 03/27/2026
--	---



Sante Fe Main Office  
Phone: (505) 476-3441

General Information  
Phone: (505) 629-6116

Online Phone Directory  
<https://www.emnrd.nm.gov/ocd/contact-us>

**State of New Mexico**  
**Energy, Minerals and Natural Resources**  
**Oil Conservation Division**  
**1220 S. St Francis Dr.**  
**Santa Fe, NM 87505**

CONDITIONS

Action 567618

**CONDITIONS**

Operator: CHEVRON U S A INC 6301 Deauville Blvd Midland, TX 79706	OGRID: 4323
	Action Number: 567618
	Action Type: [C-141] Remediation Closure Request C-141 (C-141-v-Closure)

**CONDITIONS**

Created By	Condition	Condition Date
rhamlet	We have received your Remediation Closure Report for Incident #nAPP2608050377 Salado Draw 23 Central Tank Battery, thank you. This Remediation Closure Report is approved.	3/31/2026