

District I<sup>1</sup>  
1625 N. French Dr., Hobbs, NM 88240  
District II<sup>2</sup>  
1301 W. Grand Avenue, Artesia, NM 88210  
District III<sup>3</sup>  
1000 Rio Brazos Road, Aztec, NM 87410  
District IV<sup>4</sup>  
1220 S. St. Francis Dr., Santa Fe, NM 87505

State of New Mexico  
Energy Minerals and Natural Resources

Form C-101  
Revised June 10, 2003

Oil Conservation Division  
1220 South St. Francis Dr.  
Santa Fe, NM 87505

Submit to appropriate District Office  
State Lease - 6 Copies  
Fee Lease - 5 Copies

DEC 13 2004

☐ AMENDED REPORT

**APPLICATION FOR PERMIT TO DRILL, RE-ENTER, DEEPEN, PLUGBACK, OR ADD A ZONE**

<sup>1</sup> Operator Name and Address El Paso Energy Raton, L.L.C. PO Box 190 Raton, NM 87740		<sup>2</sup> OGRID Number 180514
<sup>3</sup> Property Code 25179		<sup>3</sup> API Number 30-007-20563
<sup>5</sup> Property Name Vermejo Park Ranch (VPR)		<sup>6</sup> Well No. VPR D 191

<sup>7</sup> Surface Location

UL or lot no.	Section	Township	Range	Lot Idn	Feet from the	North/South line	Feet from the	East/West line	County
L	13	31N	17E	L	1560	FSL	1241	FWL	Colfax

<sup>8</sup> Proposed Bottom Hole Location If Different From Surface

UL or lot no.	Section	Township	Range	Lot Idn	Feet from the	North/South line	Feet from the	East/West line	County

<sup>9</sup> Proposed Pool 1

Castle Rock Park – Vermejo

<sup>10</sup> Proposed Pool 2

<sup>11</sup> Work Type Code N	<sup>12</sup> Well Type Code G	<sup>13</sup> Cable/Rotary Rotary/Air	<sup>14</sup> Lease Type Code P	<sup>15</sup> Ground Level Elevation 8,097'
<sup>16</sup> Multiple Yes	<sup>17</sup> Proposed Depth 1,480'	<sup>18</sup> Formation Vermejo	<sup>19</sup> Contractor Pense	<sup>20</sup> Spud Date February 1, 2005

<sup>21</sup> Proposed Casing and Cement Program

Hole Size	Casing Size	Casing weight/foot	Setting Depth	Sacks of Cement	Estimated TOC
11'	8 5/8"	24#	330'	100 sk	Surface
7 7/8"	5 1/2"	17#	1,480'	200 sks	Surface

<sup>22</sup> Describe the proposed program. If this application is to DEEPEN or PLUG BACK, give the data on the present productive zone and proposed new productive zone.  
Describe the blowout prevention program, if any. Use additional sheets if necessary.

1. Drill 11" hole to +/- 330' with air.
2. Set 8 5/8" surface casing and cement to surface with 100 sks of cement.
3. Drill 7 7/8" hole 1,480' with air. Run open hole logs.
4. Set 5 1/2" production casing to TD and cement to surface. Cement volumes calculated from open hole logs. Run Cement Bond Log.
5. Perforate and stimulate the Vermejo and/or Raton Coals. Clean out well bore and run production equipment.

<sup>23</sup> I hereby certify that the information given above is true and complete to the best of my knowledge and belief.

Signature:

*DR Lankford*

Printed name: Donald R. Lankford

Title: Production Engineer

E-mail Address:

Date: 12/06/05

Phone: (505) 445-6721

OIL CONSERVATION DIVISION

Approved by:

*[Signature]*

Title:

DISTRICT SUPERVISOR

Approval Date:

12/15/04

Expiration Date:

12/15/05

Conditions of Approval:

Attached ☐

District I  
1625 N. French Dr., Hobbs, NM 88240  
District II  
1301 W. Grand Avenue, Artesia, NM 88210  
District III  
1000 Rio Brazos Rd., Aztec, NM 87410  
District IV  
1220 S. St. Francis Dr., Santa Fe, NM 87505

State of New Mexico  
Energy, Minerals & Natural Resources Department  
**OIL CONSERVATION DIVISION**  
1220 South St. Francis Dr.  
Santa Fe, NM 87505

Form C-102  
Revised August 15, 2000  
Submit to Appropriate District Office  
State Lease - 4 Copies  
Fee Lease - 3 Copies

☐ AMENDED REPORT

**WELL LOCATION AND ACREAGE DEDICATION PLAT**

<sup>1</sup> API Number	<sup>2</sup> Pool Code 97046	<sup>3</sup> Pool Name CASTLE ROCK PARK - VERMEJO GAS
<sup>4</sup> Property Code 25179	<sup>5</sup> Property Name VERMEJO PARK RANCH	<sup>6</sup> Well Number VPR'D'-191
<sup>7</sup> OGRID No. 180514	<sup>8</sup> Operator Name EL PASO ENERGY RATON, L.L.C.	<sup>9</sup> Elevation 8097'

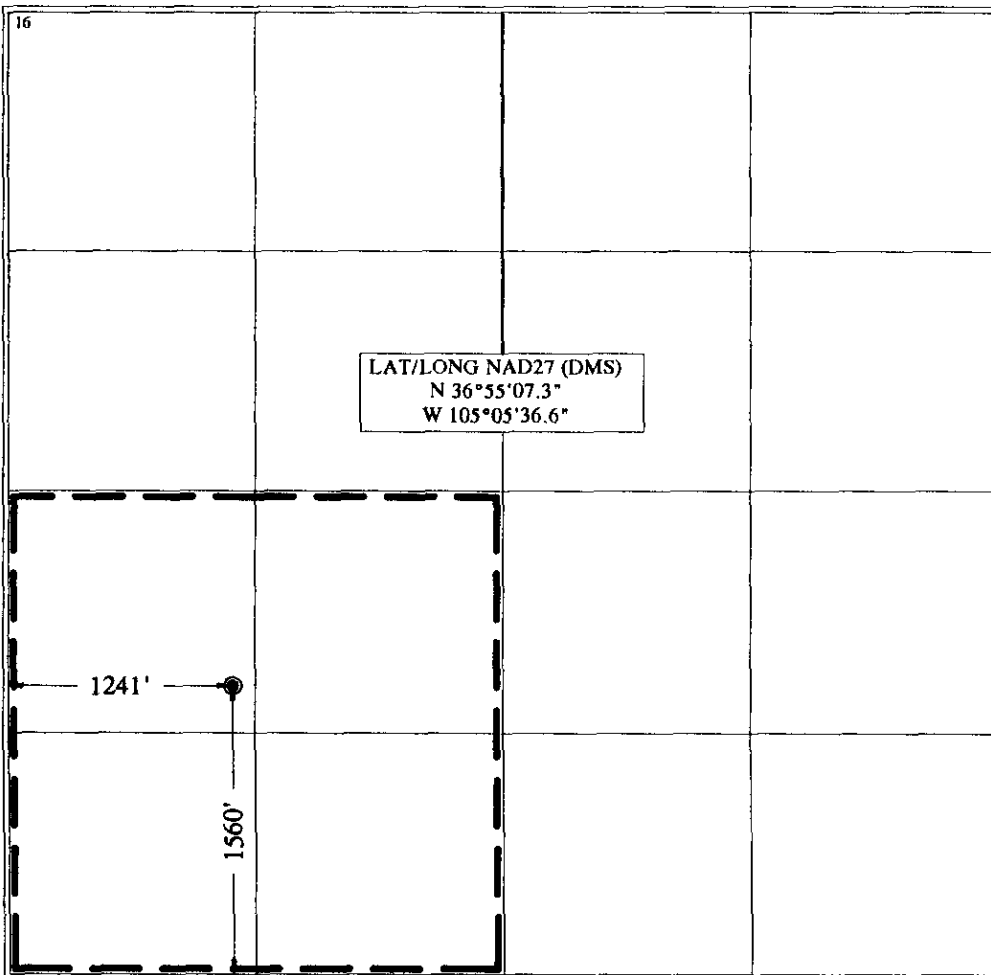
<sup>10</sup> Surface Location

UL or lot no. L	Section 13	Township T 31 N	Range R 17 E	Lot Idn L	Feet from the 1560	North/South line SOUTH	Feet from the 1241	East/West line WEST	County COLFAX
--------------------	---------------	--------------------	-----------------	--------------	-----------------------	---------------------------	-----------------------	------------------------	------------------

<sup>11</sup> Bottom Hole Location If Different From Surface

UL or lot no.	Section	Township	Range	Lot Idn	Feet from the	North/South line	Feet from the	East/West line	County
<sup>12</sup> Dedicated Acres	<sup>13</sup> Joint or Infill	<sup>14</sup> Consolidation Code	<sup>15</sup> Order No.						

NO ALLOWABLE WILL BE ASSIGNED TO THIS COMPLETION UNTIL ALL INTERESTS HAVE BEEN CONSOLIDATED OR A NON-STANDARD UNIT HAS BEEN APPROVED BY THE DIVISION



<sup>17</sup> OPERATOR CERTIFICATION

I hereby certify that the information contained herein is true and complete to the best of my knowledge and belief.

Signature

*DR Lankford*

Printed Name DONALD R. LANKFORD

Title SENIOR PETROLIUM ENGINEER

Date

<sup>18</sup> SURVEYOR CERTIFICATION

I hereby certify that the well location shown on this plat was plotted from field notes of actual surveys made by me or under my supervision, and that the same is true and correct to the best of my belief.

December 3, 2004

Date of Survey

Signature and Seal of Professional Surveyor:

*James Shields*  
Certificate Number NM LS NO. 5103