

State of New Mexico
Energy, Minerals and Natural Resources
Oil Conservation Division
1220 S. St Francis Dr.
Santa Fe, NM 87505

APPLICATION FOR PERMIT TO DRILL, RE-ENTER, DEEPEN, PLUGBACK, OR ADD A ZONE

1. Operator Name and Address CHEVRON U S A INC 11111 S. WILCREST HOUSTON , TX 77099		2. OGRID Number 4323
		3. API Number 30-025-38783
4. Property Code 30022	5. Property Name VACUUM GRAYBURG SAN ANDRES UNIT	6. Well No. 405

7. Surface Location

UL - Lot	Section	Township	Range	Lot Idn	Feet From	N/S Line	Feet From	E/W Line	County
H	1	18S	34E	H	1910	N	40	E	LEA

8. Pool Information

VACUUM;GRAYBURG-SAN ANDRES	62180
----------------------------	-------

Additional Well Information

9. Work Type New Well	10. Well Type OIL	11. Cable/Rotary	12. Lease Type State	13. Ground Level Elevation 3977
14. Multiple N	15. Proposed Depth	16. Formation Grayburg	17. Contractor	18. Spud Date
Depth to Ground water 120		Distance from nearest fresh water well		Distance to nearest surface water
Pit: Liner: Synthetic <input type="checkbox"/> mls thick Clay <input type="checkbox"/> Pit Volume: bbls Drilling Method: Closed Loop System <input checked="" type="checkbox"/> Fresh Water <input type="checkbox"/> Brine <input type="checkbox"/> Diesel/Oil-based <input type="checkbox"/> Gas/Air <input type="checkbox"/>				

19. Proposed Casing and Cement Program

Type	Hole Size	Casing Type	Casing Weight/ft	Setting Depth	Sacks of Cement	Estimated TOC
Surf	14.75	11.75	42	1500	1010	
Int1	11	8.625	24	2800	835	
Prod	7.875	5.5	15.5	5200	585	

Casing/Cement Program: Additional Comments

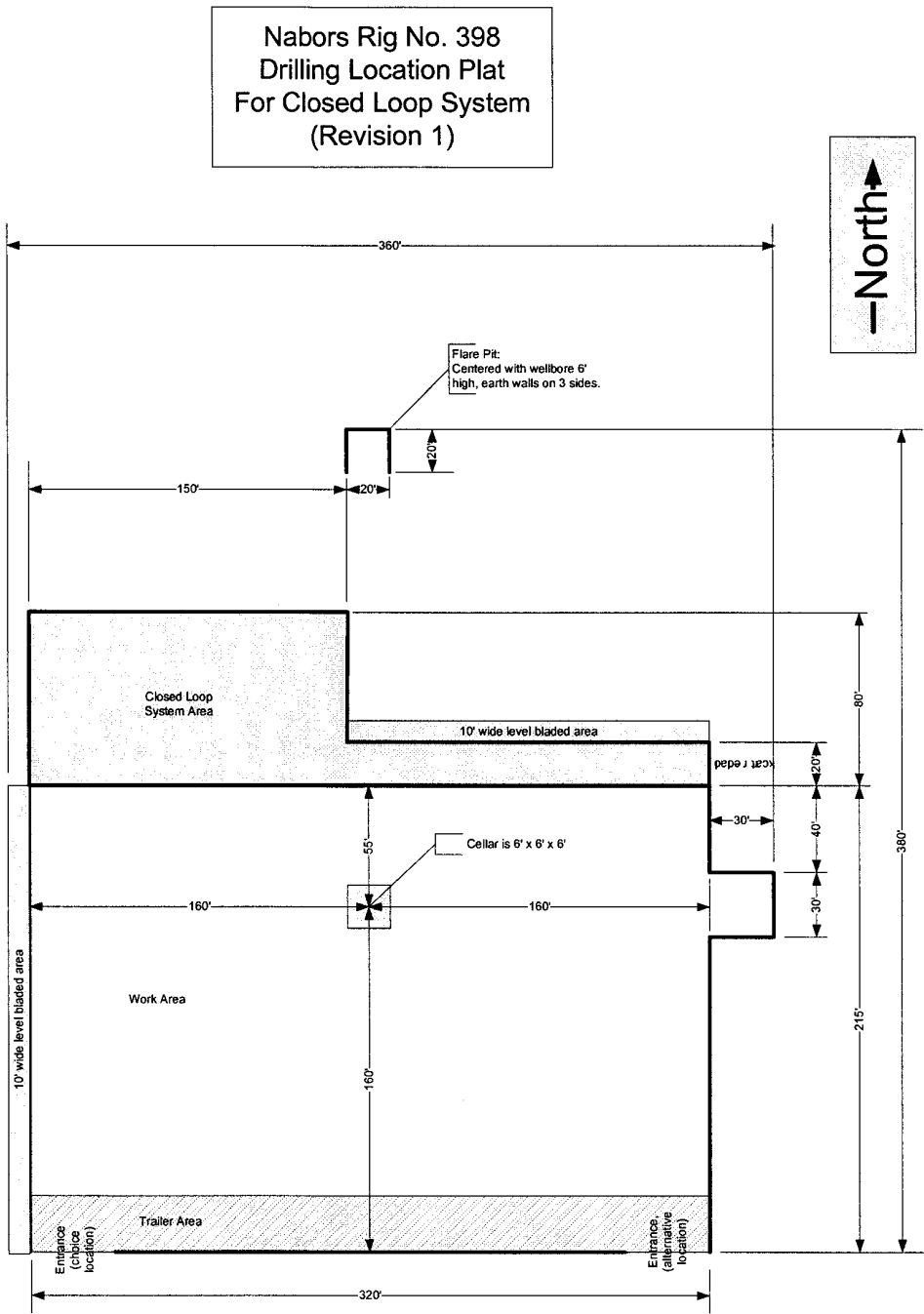
SURF: 755 SX, 13.5 PPG, 1.74 FT3/SX, 9.09 GAL/SX, CL C, 4% BENTONITE 0.1 PPS POLYFLAKE...255 SX, 14.8 PPG, 1.34 FT3/SX, 6.29 GAL/SX, CL C INTL: 550 SX, 14.8 PPG, 1.36 FT3/SX, 6.43 GAL/SX, CL C...LEAD: 185 SX, 13.5 PPG, 1.73 FT3/SX, 9.08 GAL/SX, CL C, TAIL: 100 SX, 14.8 PPG, 1.33 FT3/SX, 6.3 GAL/SX, CL C PROD: 350 SX, 12.4 PPG, 2.15 FT3/SX, 11.98 GAL/SX, 35.65 POX, CL H, TAIL: 235 SX, 14.2 PPG, 1.35 FT3/SX, 6.33 GAL/SX, 50:50 POZ CL H

Proposed Blowout Prevention Program

Type	Working Pressure	Test Pressure	Manufacturer
Annular	3000	2500	
Blind	3000	2500	
Pipe	3000	2500	

I hereby certify that the information given above is true and complete to the best of my knowledge and belief. I further certify that the drilling pit will be constructed according to NMOCD guidelines <input type="checkbox"/> , a general permit <input type="checkbox"/> , or an (attached) alternative OCD-approved plan <input type="checkbox"/> . Printed Name: Electronically filed by Denise Pinkerton Title: Regulatory Specialist Email Address: leakejd@chevron.com Date: 9/18/2007 Phone: 432-687-7375	OIL CONSERVATION DIVISION Approved By: Chris Williams Title: District Supervisor Approved Date: 2/29/2008 Expiration Date: 2/28/2010 Conditions of Approval Attached
---	--

Pit information and Design (Closed Loop System)



Notes:

1. Flare pit should always be in North or Eastern corner of location, to take advantage of prevailing winds in the event of an H2S occurrence.
2. 20' wide roadway should be included to allow access to skip loader tracks from either end.

DISTRICT I
1625 N. French Dr., Hobbs, NM 88240

DISTRICT II
1301 W. Grand Ave., Artesia, NM 88210

DISTRICT III
1000 Rio Brazos Rd., Aztec, NM 87410

DISTRICT IV
1220 St. Francis Dr., Santa Fe, NM 87505

State of New Mexico
Energy, Minerals and Natural Resources Department

OIL CONSERVATION DIVISION
1220 South St. Francis Drive
Santa Fe, NM 87505

Form C-102
Revised October 12, 2005

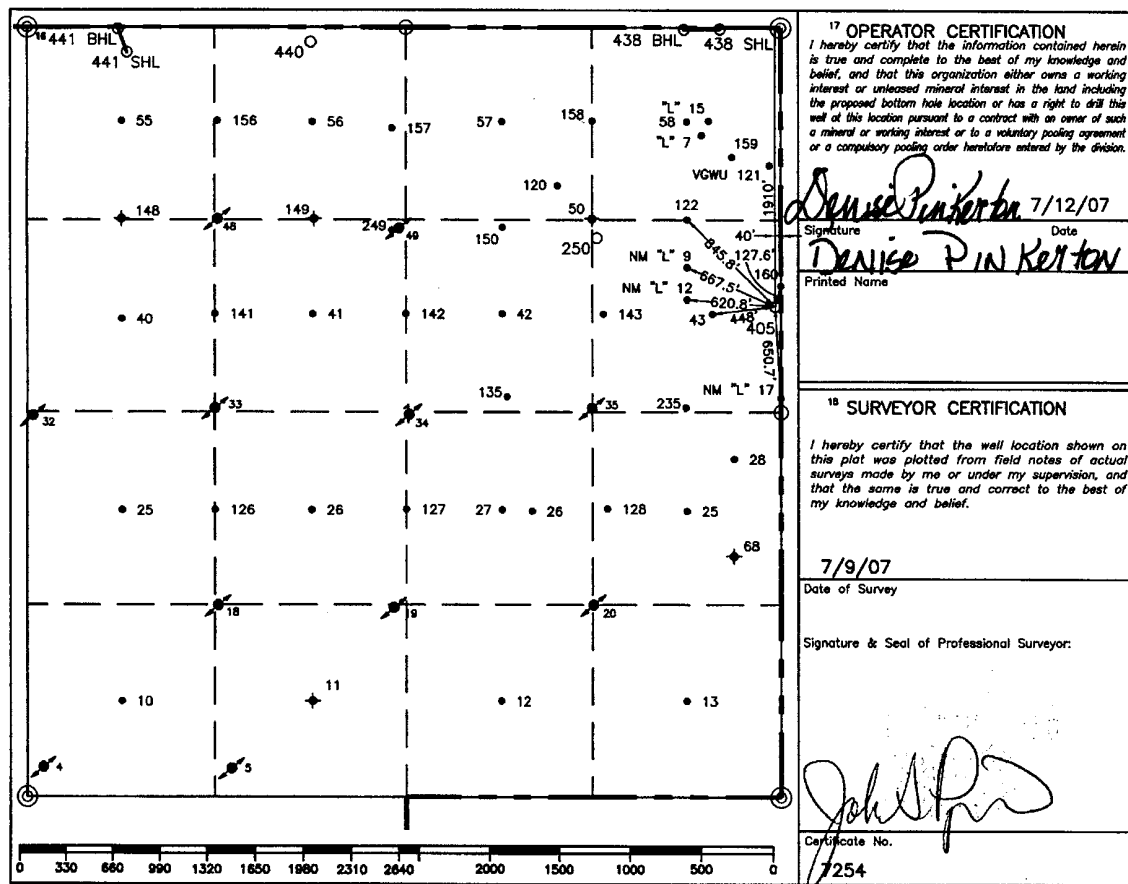
Submit to Appropriate District Office
State Lease-4 copies
Fee Lease-3 copies

☐ AMENDED REPORT

WELL LOCATION AND ACREAGE DEDICATION PLAT

1 API Number		2 Pool Code 62180		3 Pool Name Vacuum Grayburg San Andres	
4 Property Code		5 Property Name Vacuum Grayburg San Andres Unit			
6 Well Number 405		7 Operator Name CHEVRON USA, INC.			
8 OGRID No. 4323		9 Elevation 3977'			
10 Surface Location					
UL or lot no. H	Section 1	Township 18-S	Range 34-E	Lot Idn	Feet from the 1910'
				North/South line North	Feet from the 40'
				East/West line East	County Lea
11 Bottom Hole Location If Different From Surface					
UL or lot no.	Section	Township	Range	Lot Idn	Feet from the
				North/South line	Feet from the
				East/West line	County
12 Dedicated Acres 10		13 Joint or Infill		14 Consolidation Code	
				15 Order No.	

NO ALLOWABLE WILL BE ASSIGNED TO THIS COMPLETION UNTIL ALL INTERESTS HAVE BEEN CONSOLIDATED
OR A NON-STANDARD UNIT HAS BEEN APPROVED BY THE DIVISION.



○ = Staked Location ● = Producing Well ● = Injection Well ◇ = Water Supply Well ◆ = Plugged & Abandon Well
⊙ = Found Section Corner, 2 or 3" Iron Pipe & GLO B.C. ○ = Found 1/4 Section Corner, 1" Iron Pipe & GLO B.C.

ADDITIONAL INFORMATION ON THE LOCATION

State Plane Coordinates			
Northing 648138.25		Easting 795763.52	
Latitude 32°46'44.507"		Longitude 103°30'19.832"	
Zone	North American Datum	Combined Grid Factor	Coordinate File
East	1983	0.99979647	Buckeye.Crd
Drawing File		Field Book	
VGSAU-Sec1.Dwg		Lea #23, Pg. 76	

Permit Conditions of Approval

Operator: CHEVRON U S A INC , 4323

Well: VACUUM GRAYBURG SAN ANDRES UNIT #405

API: 30-025-38783

OCD Reviewer	Condition
pkautz	Pit construction and closure must satisfy all requirements of your approved plan, O.C.D. Rule 19.15.2.50, and the Pit and Below-Grade Tank Guidelines
DMULL	NSL-5789, 02/25/08, 1910/N & 40/E, Vacuum Grayburg San Andres