

District I
1625 N. French Dr., Hobbs, NM 88240
Phone:(575) 393-6161 Fax:(575) 393-0720
District II
811 S. First St., Artesia, NM 88210
Phone:(575) 748-1283 Fax:(575) 748-9720
District III
1000 Rio Brazos Rd., Aztec, NM 87410
Phone:(505) 334-6178 Fax:(505) 334-6170
District IV
1220 S. St Francis Dr., Santa Fe, NM 87505
Phone:(505) 476-3470 Fax:(505) 476-3462

State of New Mexico
Energy, Minerals and Natural Resources
Oil Conservation Division
1220 S. St Francis Dr.
Santa Fe, NM 87505

Form C-101
August 1, 2011
Permit 155312

APPLICATION FOR PERMIT TO DRILL, RE-ENTER, DEEPEN, PLUGBACK, OR ADD A ZONE

| | | |
|---|---|-------------------------------|
| 1. Operator Name and Address APACHE CORP 303 Veterans Airpark Lane Midland, TX 79705 | | 2. OGRID Number 873 |
| | | 3. API Number 30-025-40785 |
| 4. Property Code 22503 | 5. Property Name NORTHEAST DRINKARD UNIT | 6. Well No. 353 |

7. Surface Location

| UL - Lot | Section | Township | Range | Lot Idn | Feet From | N/S Line | Feet From | E/W Line | County |
|----------|---------|----------|-------|---------|-----------|----------|-----------|----------|--------|
| K | 3 | 21S | 37E | K | 1410 | S | 2030 | W | LEA |

8. Pool Information

| | |
|-------------------------|-------|
| EUNICE;BLI-TU-DR, NORTH | 22900 |
|-------------------------|-------|

Additional Well Information

| | | | | |
|--------------------------|----------------------------|--|---------------------------|------------------------------------|
| 9. Work Type New Well | 10. Well Type OIL | 11. Cable/Rotary | 12. Lease Type Private | 13. Ground Level Elevation 3425 |
| 14. Multiple N | 15. Proposed Depth 7100 | 16. Formation Drinkard | 17. Contractor | 18. Spud Date |
| Depth to Ground water | | Distance from nearest fresh water well | | Distance to nearest surface water |

19. Proposed Casing and Cement Program

| Type | Hole Size | Casing Type | Casing Weight/ft | Setting Depth | Sacks of Cement | Estimated TOC |
|------|-----------|-------------|------------------|---------------|-----------------|---------------|
| Surf | 11 | 8.625 | 24 | 1305 | 475 | |
| Prod | 7.875 | 5.5 | 17 | 7000 | 995 | |

Casing/Cement Program: Additional Comments

| |
|--|
| |
|--|

Proposed Blowout Prevention Program

| Type | Working Pressure | Test Pressure | Manufacturer |
|--------|------------------|---------------|--------------|
| Hydril | 3000 | 2000 | |

| | | |
|--|----------------------------------|----------------------------|
| I hereby certify that the information given above is true and complete to the best of my knowledge and belief. I further certify that the drilling pit will be constructed according to NMOCD guidelines <input type="checkbox"/> , a general permit <input type="checkbox"/> , or an (attached) alternative OCD-approved plan <input type="checkbox"/> . Printed Name: Electronically filed by Bobby Smith Title: Email Address: bobby.smith@apachecorp.com Date: 9/24/2012 Phone: 432-818-1020 | OIL CONSERVATION DIVISION | |
| | Approved By: Paul Kautz | |
| | Title: Geologist | |
| | Approved Date: 9/25/2012 | Expiration Date: 9/25/2014 |
| | Conditions of Approval Attached | |

DISTRICT I
1025 N. French Dr., Hobbs, NM 88240
Phone (505) 393-5151 Fax: (505) 393-0720

DISTRICT II
811 S. First St., Artesia, NM 88210
Phone (505) 748-1283 Fax: (505) 748-0720

DISTRICT III
1000 Rio Brazos Rd., Aztec, NM 87410
Phone (505) 334-5178 Fax: (505) 334-5170

DISTRICT IV
1220 S. St. Francis Dr., Santa Fe, NM 87506
Phone (505) 476-3460 Fax: (505) 476-3462

State of New Mexico
Energy, Minerals and Natural Resources Department

OIL CONSERVATION DIVISION
1220 South St. Francis Dr.
Santa Fe, New Mexico 87505

Form C-102
Revised August 1, 2011

Submit one copy to appropriate
District Office

WELL LOCATION AND ACREAGE DEDICATION PLAT

☐ AMENDED REPORT

| | | |
|-------------------------------|---|------------------------------|
| API Number 30-025- | Pool Code | Pool Name Drinkard |
| Property Code 22503 | Property Name NORTHEAST DRINKARD UNIT | Well Number 353 |
| OGRID No. 873 | Operator Name APACHE CORPORATION | Elevation 3425' |

Surface Location

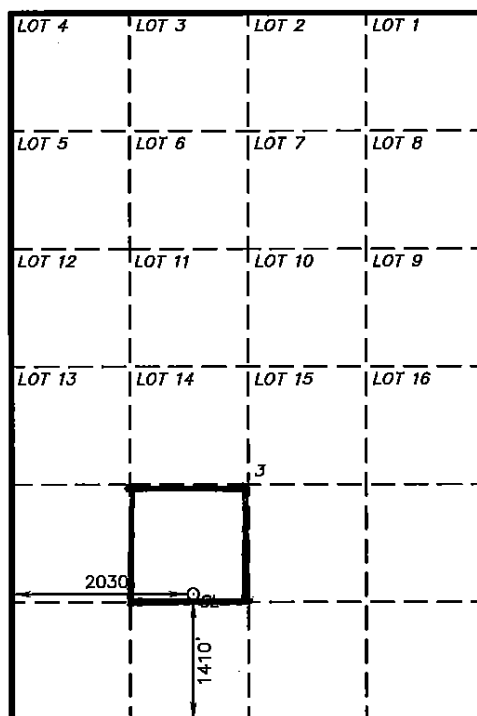
| UL or lot No. | Section | Township | Range | Lot Idn | Feet from the | North/South line | Feet from the | East/West line | County |
|---------------|---------|----------|-------|---------|---------------|------------------|---------------|----------------|--------|
| K | 3 | 21 S | 37 E | | 1410 | SOUTH | 2030 | WEST | LEA |

Bottom Hole Location If Different From Surface

| UL or lot No. | Section | Township | Range | Lot Idn | Feet from the | North/South line | Feet from the | East/West line | County |
|---------------|---------|----------|-------|---------|---------------|------------------|---------------|----------------|--------|
| | | | | | | | | | |

| | | | |
|------------------------------|-----------------|--------------------|-----------|
| Dedicated Acres 40 | Joint or Infill | Consolidation Code | Order No. |
|------------------------------|-----------------|--------------------|-----------|

NO ALLOWABLE WILL BE ASSIGNED TO THIS COMPLETION UNTIL ALL INTERESTS HAVE BEEN CONSOLIDATED
OR A NON-STANDARD UNIT HAS BEEN APPROVED BY THE DIVISION



SURFACE LOCATION
Lat - N 32°30'16.51"
Long - W 103°09'10.43"
NMSPC- N 549314.138
E 905251.232
(NAD-83)
Lat - N 32°30'16.08"
Long - W 103°09'08.74"
NMSPC- N 549254.160
E 864067.330
(NAD-27)

OPERATOR CERTIFICATION

I hereby certify that the information contained herein is true and complete to the best of my knowledge and belief, and that this organization either owns a working interest or unleased mineral interest in the land including the proposed bottom hole location or has a right to drill this well at this location pursuant to a contract with an owner of such a mineral or working interest, or to a voluntary pooling agreement or a compulsory pooling order heretofore entered by the division.

Vicki Brown 9/24/12
Signature Date

Vicki Brown
Printed Name
vicki.brown@apachecorp.com
Email Address

SURVEYOR CERTIFICATION

I hereby certify that the well location shown on this plat was plotted from field notes of actual surveys made by me or under my supervision, and that the same is true and correct to the best of my belief.

SEPTEMBER 30, 2012

Date Surveyed
Signature of Professional Surveyor
7977

Certificate No. Gary L. Jones 7977

BASIN SURVEYS 27311

Permit Comments

Operator: APACHE CORP , 873

Well: NORTHEAST DRINKARD UNIT #353

API: 30-025-40785

| Created By | Comment | Comment Date |
|------------|---|--------------|
| pkautz | Land p/P | 9/25/2012 |
| CHERRERA | OCD RECEIVED FORM C144 CLEZ. OCD PERMIT #P1-05231 | 9/25/2012 |

Permit Conditions of Approval

Operator: APACHE CORP , 873

Well: NORTHEAST DRINKARD UNIT #353

API: 30-025-40785

| OCD Reviewer | Condition |
|-----------------|--|
| pkautz | Once the well is spud, to prevent ground water contamination through whole or partial conduits from the surface, the operator shall drill without interruption through the fresh water zone or zones and shall immediately set in cement the water protection string |