

**District I**  
1625 N. French Dr., Hobbs, NM 88240  
Phone:(575) 393-6161 Fax:(575) 393-0720  
**District II**  
811 S. First St., Artesia, NM 88210  
Phone:(575) 748-1283 Fax:(575) 748-9720  
**District III**  
1000 Rio Brazos Rd., Aztec, NM 87410  
Phone:(505) 334-6178 Fax:(505) 334-6170  
**District IV**  
1220 S. St Francis Dr., Santa Fe, NM 87505  
Phone:(505) 476-3470 Fax:(505) 476-3462

**State of New Mexico**  
**Energy, Minerals and Natural Resources**  
**Oil Conservation Division**  
**1220 S. St Francis Dr.**  
**Santa Fe, NM 87505**

Form C-101  
August 1, 2011  
Permit 161921

**APPLICATION FOR PERMIT TO DRILL, RE-ENTER, DEEPEN, PLUGBACK, OR ADD A ZONE**

1. Operator Name and Address APACHE CORP 303 Veterans Airpark Lane Midland, TX 79705		2. OGRID Number 873
4. Property Code 308701		3. API Number 30-015-41051
5. Property Name A STATE		6. Well No. 069

**7. Surface Location**

UL - Lot	Section	Township	Range	Lot Idn	Feet From	N/S Line	Feet From	E/W Line	County
G	26	17S	28E	G	2085	N	2290	E	EDDY

**8. Proposed Bottom Hole Location**

UL - Lot	Section	Township	Range	Lot Idn	Feet From	N/S Line	Feet From	E/W Line	County
G	26	17S	28E	G	2310	N	2310	E	Eddy

**9. Pool Information**

ARTESIA; GLORIETA-YESO (O)	96830
----------------------------	-------

**Additional Well Information**

11. Work Type New Well	12. Well Type OIL	13. Cable/Rotary	14. Lease Type State	15. Ground Level Elevation 3666
16. Multiple N	17. Proposed Depth 5800	18. Formation Yeso Formation	19. Contractor	20. Spud Date
Depth to Ground water		Distance from nearest fresh water well		Distance to nearest surface water

**21. Proposed Casing and Cement Program**

Type	Hole Size	Casing Type	Casing Weight/ft	Setting Depth	Sacks of Cement	Estimated TOC
Surf	12.25	8.625	24	400	300	
Prod	7.875	5.5	17	5700	960	

**Casing/Cement Program: Additional Comments**

--

**22. Proposed Blowout Prevention Program**

Type	Working Pressure	Test Pressure	Manufacturer
Hydril	3000	2000	

23. I hereby certify that the information given above is true and complete to the best of my knowledge and belief. I further certify I have complied with 19.15.14.9 (A) NMAC <input checked="" type="checkbox"/> and/or 19.15.14.9 (B) NMAC <input checked="" type="checkbox"/> if applicable. Signature: Printed Name: Electronically filed by Bobby Smith Title: Email Address: bobby.smith@apachecorp.com Date: 2/5/2013	<div style="text-align: center;"><b>OIL CONSERVATION DIVISION</b></div> Approved By: Randy Dade Title: District Supervisor Approved Date: 2/5/2013    Expiration Date: 2/5/2015 Conditions of Approval Attached
Phone: 432-818-1020	

DISTRICT I  
1625 N. French Dr., Hobbs, NM 88240  
Phone: (575) 393-6161 Fax: (575) 393-0720  
DISTRICT II  
811 S. First St., Artesia, NM 88210  
Phone: (575) 748-1283 Fax: (575) 748-9720  
DISTRICT III  
1000 Rio Brazos Road, Aztec, NM 87410  
Phone: (505) 334-6178 Fax: (505) 334-6170  
DISTRICT IV  
1220 S. St. Francis Dr., Santa Fe, NM 87505  
Phone: (505) 476-3460 Fax: (505) 476-3462

State of New Mexico  
Energy, Minerals & Natural Resources Department  
OIL CONSERVATION DIVISION  
1220 South St. Francis Dr.  
Santa Fe, New Mexico 87505

Form C-102  
Revised August 1, 2011  
Submit one copy to appropriate  
District Office

☐ AMENDED REPORT

WELL LOCATION AND ACREAGE DEDICATION PLAT

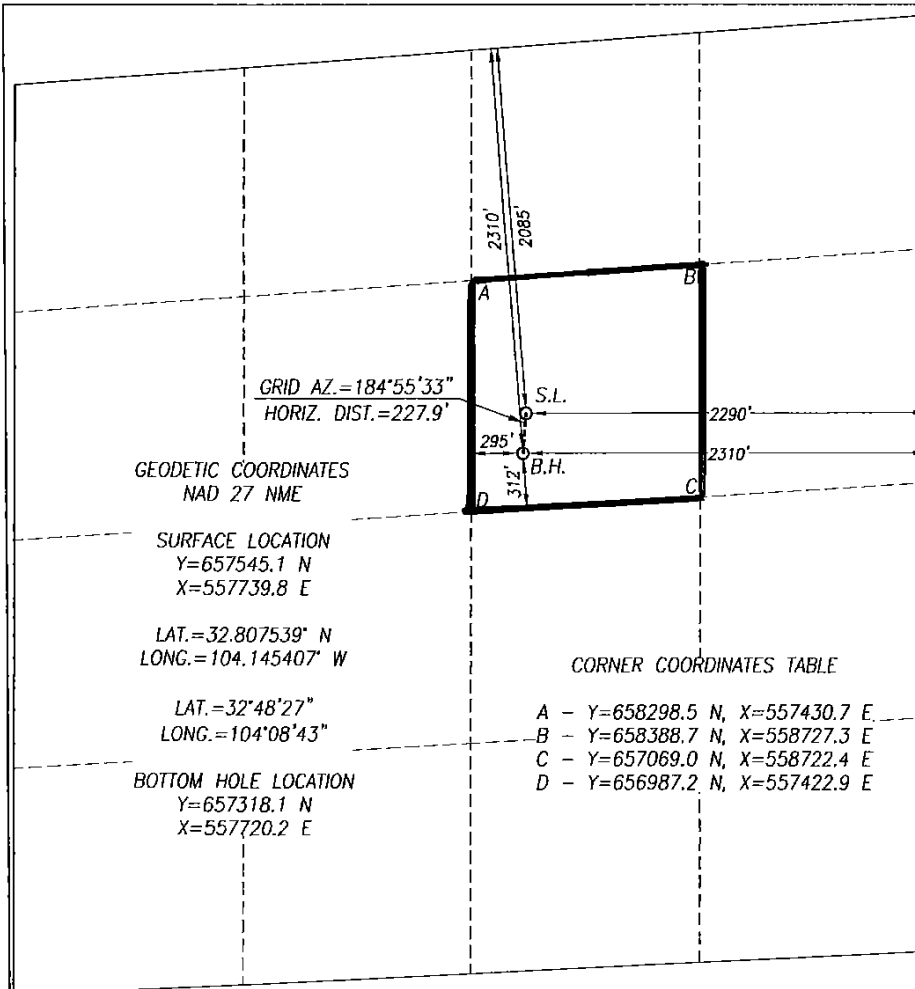
API Number <b>30-015</b>	Pool Code <b>96830</b>	Pool Name <b>Artesia; Glorietta Yero (0)</b>
Property Code <b>308701</b>	Property Name <b>A STATE</b>	Well Number <b>69</b>
OGRID No. <b>873</b>	Operator Name <b>APACHE CORPORATION</b>	Elevation <b>3666'</b>

Surface Location									
UL or lot No.	Section	Township	Range	Lot Idn	Feet from the	North/South line	Feet from the	East/West line	County
G	26	17-S	28-E		2085	NORTH	2290	EAST	EDDY

Bottom Hole Location If Different From Surface									
UL or lot No.	Section	Township	Range	Lot Idn	Feet from the	North/South line	Feet from the	East/West line	County
G	26	17-S	28-E		2310	NORTH	2310	EAST	EDDY

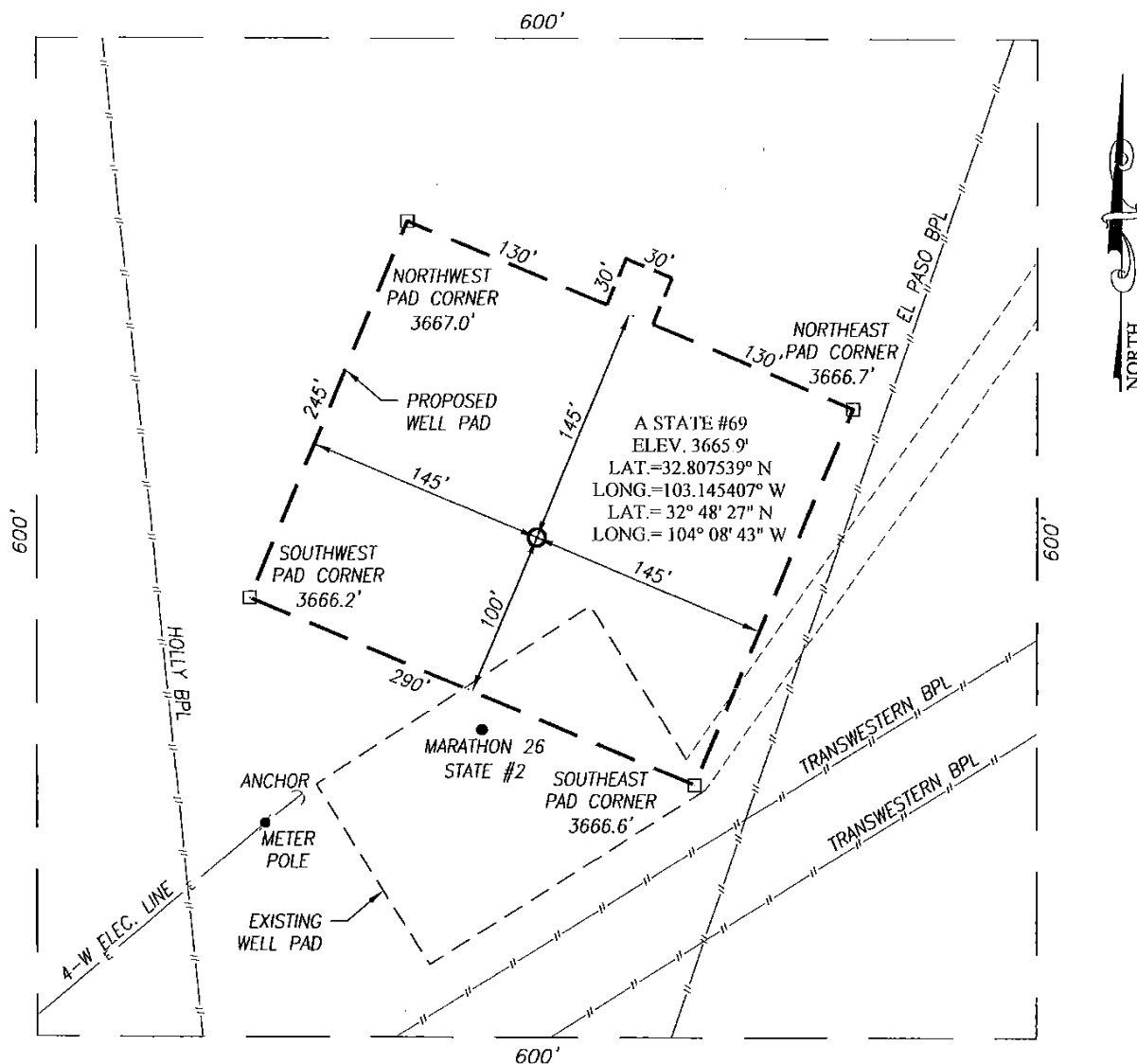
Dedicated Acres <b>40</b>	Joint or Infill	Consolidation Code	Order No.
------------------------------	-----------------	--------------------	-----------

NO ALLOWABLE WILL BE ASSIGNED TO THIS COMPLETION UNTIL ALL INTERESTS HAVE BEEN CONSOLIDATED OR A NON-STANDARD UNIT HAS BEEN APPROVED BY THE DIVISION



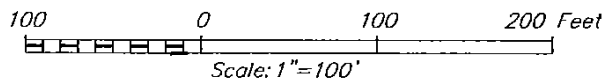
<p><b>OPERATOR CERTIFICATION</b></p> <p>I hereby certify that the information herein is true and complete to the best of my knowledge and belief, and that this organization either owns a working interest or unleased mineral interest in the land including the proposed bottom hole location or has a right to drill this well at this location pursuant to a contract with an owner of such mineral or working interest, or to a voluntary pooling agreement or a compulsory pooling order heretofore entered by the division.</p> <p><i>Vicki Brown</i> 2/4/13 Signature Date <i>Vicki Brown</i> Printed Name <i>vicki.brown@apachecorp.com</i> E-mail Address</p>	
<p><b>SURVEYOR CERTIFICATION</b></p> <p>I hereby certify that the well location shown on this plat was plotted from field notes of actual surveys made by me or under my supervision, and that the same is true and correct to the best of my belief.</p> <p>JANUARY 21, 2013 Date of Survey Signature &amp; Seal of Professional Surveyor:  <div style="text-align: center;">               Gary G. Eidson              Ronald L. Eidson 3239              BKL              USC W.O.: 13.11.0020           </div> </p>	

**SECTION 26, TOWNSHIP 17 SOUTH, RANGE 28 EAST, N.M.P.M.**  
**EDDY COUNTY** **NEW MEXICO**



**DIRECTIONS TO A STATE #69**

FROM THE INTERSECTION OF HIGHWAY 62-180 AND CO.  
 RD. 209 (TURKEY TRACT) GO NORTH APPROX. 0.6  
 MILES; TURN RIGHT AND GO EAST APPROX. 0.15 MILES,  
 THIS LOCATION IS APPROX. 0.1 MILE SOUTH.



**APACHE CORPORATION**

**A STATE #69 WELL**  
 LOCATED 2085 FEET FROM THE NORTH LINE  
 AND 2290 FEET FROM THE EAST LINE OF SECTION 26,  
 TOWNSHIP 17 SOUTH, RANGE 28 EAST, N.M.P.M.,  
 EDDY COUNTY, NEW MEXICO

PROVIDING SURVEYING SERVICES  
 SINCE 1946  
**JOHN WEST SURVEYING COMPANY**  
 412 N. DAL PASO  
 HOBBS, N.M. 88240  
 (575) 393-3117 www.jwsc.biz

Survey Date: 1/21/13	CAD Date: 1/23/13	Drawn By: BKL
W.O. No.: 13110020	Rev.:	Rel. W.O.:

Sheet 1 of 1

## Permit Comments

Operator: APACHE CORP , 873

Well: A STATE #069

API: 30-015-41051

Created By	Comment	Comment Date
CSHAPARD	Land s/S	2/5/2013

## Permit Conditions of Approval

**Operator:** APACHE CORP , 873

**Well:** A STATE #069

**API:** 30-015-41051

OCD Reviewer	Condition
CSHAPARD	Once the well is spud, to prevent ground water contamination through whole or partial conduits from the surface, the operator shall drill without interruption through the fresh water zone or zones and shall immediately set in cement the water protection string