

District I
1625 N. French Dr., Hobbs, NM 88240
Phone:(575) 393-6161 Fax:(575) 393-0720
District II
811 S. First St., Artesia, NM 88210
Phone:(575) 748-1283 Fax:(575) 748-9720
District III
1000 Rio Brazos Rd., Aztec, NM 87410
Phone:(505) 334-6178 Fax:(505) 334-6170
District IV
1220 S. St Francis Dr., Santa Fe, NM 87505
Phone:(505) 476-3470 Fax:(505) 476-3462

State of New Mexico
Energy, Minerals and Natural Resources
Oil Conservation Division
1220 S. St Francis Dr.
Santa Fe, NM 87505

Form C-101
August 1, 2011
Permit 163196

APPLICATION FOR PERMIT TO DRILL, RE-ENTER, DEEPEN, PLUGBACK, OR ADD A ZONE

1. Operator Name and Address APACHE CORP 303 Veterans Airpark Lane Midland, TX 79705		2. OGRID Number 873
4. Property Code 302708		3. API Number 30-025-41037
5. Property Name NORTH MONUMENT G/SA UNIT		6. Well No. 385

7. Surface Location

UL - Lot	Section	Township	Range	Lot Idn	Feet From	N/S Line	Feet From	E/W Line	County
I	19	19S	37E	I	1330	S	1130	E	LEA

8. Proposed Bottom Hole Location

UL - Lot	Section	Township	Range	Lot Idn	Feet From	N/S Line	Feet From	E/W Line	County
P	19	19S	37E	P	1310	S	1310	E	Lea

9. Pool Information

EUNICE MONUMENT;GRAYBURG-SAN ANDRES	23000
-------------------------------------	-------

Additional Well Information

11. Work Type New Well	12. Well Type OIL	13. Cable/Rotary	14. Lease Type State	15. Ground Level Elevation 3682
16. Multiple N	17. Proposed Depth 4200	18. Formation San Andres	19. Contractor	20. Spud Date
Depth to Ground water 13		Distance from nearest fresh water well > 1000		Distance to nearest surface water > 1000

21. Proposed Casing and Cement Program

Type	Hole Size	Casing Type	Casing Weight/ft	Setting Depth	Sacks of Cement	Estimated TOC
Surf	11	8.625	24	1302	450	
Prod	7.875	5.5	17	4100	600	

Casing/Cement Program: Additional Comments

--

22. Proposed Blowout Prevention Program

Type	Working Pressure	Test Pressure	Manufacturer
Hydril	3000	2000	

23. I hereby certify that the information given above is true and complete to the best of my knowledge and belief. I further certify I have complied with 19.15.14.9 (A) NMAC <input checked="" type="checkbox"/> and/or 19.15.14.9 (B) NMAC <input checked="" type="checkbox"/> if applicable. Signature: Printed Name: Electronically filed by Bobby Smith	OIL CONSERVATION DIVISION Approved By: Paul Kautz
Title: Email Address: bobby.smith@apachecorp.com Date: 2/28/2013	Title: Geologist Approved Date: 3/5/2013 Expiration Date: 3/5/2015 Conditions of Approval Attached

DISTRICT I

1825 N. French Dr., Hobbs, NM 88240
Phone (505) 393-6101 Fax: (505) 393-0720

DISTRICT II

811 S. First St., Artesia, NM 88210
Phone (505) 748-1243 Fax: (505) 748-0720

DISTRICT III

1000 Rio Brazos Rd., Aztec, NM 87410
Phone (505) 834-8178 Fax: (505) 834-8170

DISTRICT IV

1220 S. St. Francis Dr., Santa Fe, NM 87505
Phone (505) 478-3460 Fax: (505) 478-3462

State of New Mexico
Energy, Minerals and Natural Resources Department

OIL CONSERVATION DIVISION

1220 South St. Francis Dr.
Santa Fe, New Mexico 87505

Form C-102

Revised August 1, 2011

Submit one copy to appropriate
District Office

WELL LOCATION AND ACREAGE DEDICATION PLAT

☐ AMENDED REPORT

API Number 30-025-	Pool Code 23000	Pool Name Eunice Monument: Grayburg San Andres
Property Code 302708	Property Name NMGSAU	Well Number 385
GRID No. 873	Operator Name APACHE CORPORATION	Elevation 3682'

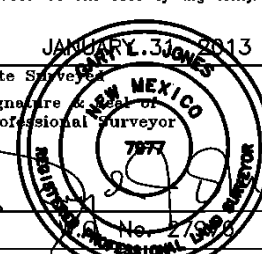
Surface Location

UL or lot No.	Section	Township	Range	Lot Idn	Feet from the	North/South line	Feet from the	East/West line	County
I	19	19 S	37 E		1330	SOUTH	1130	EAST	LEA

Bottom Hole Location If Different From Surface

UL or lot No.	Section	Township	Range	Lot Idn	Feet from the	North/South line	Feet from the	East/West line	County
P	19	19 S	37 E		1310	SOUTH	1310	EAST	LEA
Dedicated Acres 40	Joint or Infill	Consolidation Code	Order No.						

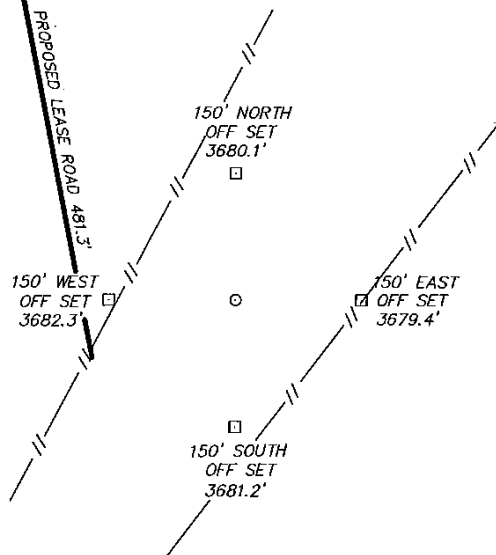
NO ALLOWABLE WILL BE ASSIGNED TO THIS COMPLETION UNTIL ALL INTERESTS HAVE BEEN CONSOLIDATED
OR A NON-STANDARD UNIT HAS BEEN APPROVED BY THE DIVISION

N: 602873.0 E: 818455.1 NAD 27	LOT 1	N: 602865.8 E: 821047.0 NAD 27	N: 602859.8 E: 823682.9 NAD 27	OPERATOR CERTIFICATION I hereby certify that the information contained herein is true and complete to the best of my knowledge and belief, and that this organization either owns a working interest or unleased mineral interest in the land including the proposed bottom hole location or has a right to drill this well at this location pursuant to a contract with an owner of such a mineral or working interest, or to a voluntary pooling agreement or a compulsory pooling order heretofore entered by the division. <i>Vicki Brown</i> 2/26/13 Signature Date Vicki Brown Printed Name vicki.brown@apachecorp.com Email Address
	LOT 2			
N: 600225.7 E: 818482.2 NAD 27	LOT 3	PROPOSED BOTTOM HOLE LOCATION Lat - N 32°38'31.96" Long - W 103°17'11.16" NMSPCE - N 598955.9 E 863589.5 (NAD-83) Lat - N 32°38'31.52" Long - W 103°17'09.42" NMSPCE - N 598893.8 E 822407.9 (NAD-27)	SURFACE LOCATION Lat - N 32°38'32.14" Long - W 103°17'09.05" NMSPCE - N 598975.9 E 863769.5 (NAD-83) Lat - N 32°38'31.71" Long - W 103°17'07.31" NMSPCE - N 598913.8 E 822587.9 (NAD-27)	
	LOT 4			
N: 597578.7 E: 818504.8 NAD 27		N: 597581.8 E: 821091.9 NAD 27	N: 597585.7 E: 823730.2 NAD 27	SURVEYOR CERTIFICATION I hereby certify that the well location shown on this plat was plotted from field notes of actual surveys made by me or under my supervision and that the same is true and correct to the best of my belief. JAN 27 2013 Date Surveyed Signature of Professional Surveyor  Certificate No. Gary L. Jones 7977 BASIN SURVEYS 27976

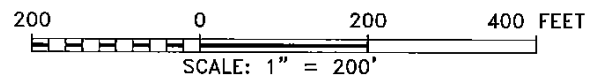
SECTION 19, TOWNSHIP 19 SOUTH, RANGE 37 EAST, N.M.P.M.,
LEA COUNTY, NEW MEXICO.

APACHE CORPORATION
NMGSAU #385
ELEV. - 3682'

Lat - N 32°38'32.14"
Long - W 103°17'09.05"
NMSPCE- N 598975.9
E 863769.5
(NAD-83)
Lat - N 32°38'31.71"
Long - W 103°17'07.31"
NMSPCE- N 598913.8
E 822587.9
(NAD-27)



WELL IS LOCATED ±10 MILES SOUTHWEST OF HOBBS, NEW MEXICO.



Directions to Location:

FROM THE JUNCTION OF HWY 62-180 AND MADDOX,
GO SOUTH 3.8 MILES TURNING EAST 0.7 MILES TO
PROPOSED LEASE ROAD.

APACHE CORPORATION

REF: NMGSAU #385 / WELL PAD TOPO

THE NMGSAU #385 LOCATED 1330'

FROM THE SOUTH LINE AND 1130' FROM THE EAST LINE OF
SECTION 19, TOWNSHIP 19 SOUTH, RANGE 37 EAST,
N.M.P.M., LEA COUNTY, NEW MEXICO.

BASIN SURVEYS P.O. BOX 1786-HOBBS, NEW MEXICO

W.O. Number: 27976

Drawn By: J. SMALL

Date: 02-11-2013

Disk: JMS 27976

Survey Date: 01-31-2013

Sheet 1 of 1 Sheets

Permit Comments

Operator: APACHE CORP , 873

Well: NORTH MONUMENT G/SA UNIT #385

API: 30-025-41037

Created By	Comment	Comment Date
pkautz	Land s/S	2/28/2013
CHERRERA	OCD RECEIVED FORM C144 CLEZ. OCD PERMIT# P1-05839	3/5/2013

Permit Conditions of Approval

Operator: APACHE CORP , 873

Well: NORTH MONUMENT G/SA UNIT #385

API: 30-025-41037

OCD Reviewer	Condition
pkautz	Once the well is spud, to prevent ground water contamination through whole or partial conduits from the surface, the operator shall drill without interruption through the fresh water zone or zones and shall immediately set in cement the water protection string
pkautz	In order to seal off protectable water, surface casing must be set 25' below top Rustler Anhydrite