

District I
1625 N. French Dr., Hobbs, NM 88240
Phone:(575) 393-6161 Fax:(575) 393-0720
District II
811 S. First St., Artesia, NM 88210
Phone:(575) 748-1283 Fax:(575) 748-9720
District III
1000 Rio Brazos Rd., Aztec, NM 87410
Phone:(505) 334-6178 Fax:(505) 334-6170
District IV
1220 S. St Francis Dr., Santa Fe, NM 87505
Phone:(505) 476-3470 Fax:(505) 476-3462

State of New Mexico
Energy, Minerals and Natural Resources
Oil Conservation Division
1220 S. St Francis Dr.
Santa Fe, NM 87505

Form C-101
August 1, 2011
Permit 164660

APPLICATION FOR PERMIT TO DRILL, RE-ENTER, DEEPEN, PLUGBACK, OR ADD A ZONE

1. Operator Name and Address MURCHISON OIL & GAS INC 1100 Mira Vista Blvd. Plano, TX 75093		2. OGRID Number 15363
4. Property Code 8127		3. API Number 30-025-41086
5. Property Name JACKSON UNIT		6. Well No. 015H

7. Surface Location

UL - Lot	Section	Township	Range	Lot Idn	Feet From	N/S Line	Feet From	E/W Line	County
C	15	24S	33E	C	200	N	1670	W	LEA

8. Proposed Bottom Hole Location

UL - Lot	Section	Township	Range	Lot Idn	Feet From	N/S Line	Feet From	E/W Line	County
N	15	24S	33E	N	330	S	1670	W	Lea

9. Pool Information

TRIPLE X;BONE SPRING, WEST	96674
----------------------------	-------

Additional Well Information

11. Work Type New Well	12. Well Type OIL	13. Cable/Rotary	14. Lease Type State	15. Ground Level Elevation 3614
16. Multiple N	17. Proposed Depth 11200	18. Formation 2nd Bone Spring Sand	19. Contractor	20. Spud Date 12/1/2013
Depth to Ground water		Distance from nearest fresh water well		Distance to nearest surface water

21. Proposed Casing and Cement Program

Type	Hole Size	Casing Type	Casing Weight/ft	Setting Depth	Sacks of Cement	Estimated TOC
Surf	16	13.375	54.5	1250	800	0
Int1	12.25	9.625	40	5160	1375	0
Prod	8.75	7	26	10920	700	4000
Liner1	6.125	4.5	11.6	15600	400	10820

Casing/Cement Program: Additional Comments

Cement with 35% excess and circulate to surface on surface casing and intermediate casing. Cement with 50% excess on production casing to bring TOC to 4000' MD. Cement liner with 25% excess to bring TOC to 10820' MD.

22. Proposed Blowout Prevention Program

Type	Working Pressure	Test Pressure	Manufacturer
Annular	5000	5000	Schaffer
DoubleRam	5000	5000	Schaffer

23. I hereby certify that the information given above is true and complete to the best of my knowledge and belief. I further certify I have complied with 19.15.14.9 (A) NMAC <input checked="" type="checkbox"/> and/or 19.15.14.9 (B) NMAC <input checked="" type="checkbox"/> , if applicable. Signature:	OIL CONSERVATION DIVISION
Printed Name: Electronically filed by Michael Daugherty	Approved By: Paul Kautz
Title: COO	Title: Geologist
Email Address: ccottrell@jdmii.com	Approved Date: 4/3/2013 Expiration Date: 4/3/2015
Date: 4/1/2013 Phone: 972-931-0700	Conditions of Approval Attached

District I
1625 N. French Dr., Hobbs, NM 88240
Phone: (575) 393-6161 Fax: (575) 393-0720
District II
811 S. First St., Artesia, NM 88210
Phone: (575) 748-1283 Fax: (575) 748-9729
District III
1000 Rio Brazos Road, Aztec, NM 87410
Phone: (505) 334-6178 Fax: (505) 334-6170
District IV
1220 S. St. Francis Dr., Santa Fe, NM 87505
Phone: (505) 476-3460 Fax: (505) 476-3462

State of New Mexico
Energy, Minerals & Natural Resources Department
OIL CONSERVATION DIVISION
1220 South St. Francis Dr.
Santa Fe, NM 87505

Form C-102
Revised August 1, 2011
Submit one copy to appropriate
District Office

☐ AMENDED REPORT

WELL LOCATION AND ACREAGE DEDICATION PLAT

¹ API Number		² Pool Code 96674		³ Pool Name Triple X, Bone Spring, West	
⁴ Property Code 8127		⁵ Property Name JACKSON UNIT			⁶ Well Number 15H
⁸ OGRID No. 15363		⁹ Operator Name MURCHISON OIL & GAS, INC.			⁷ Elevation 3613.6

¹⁰ Surface Location

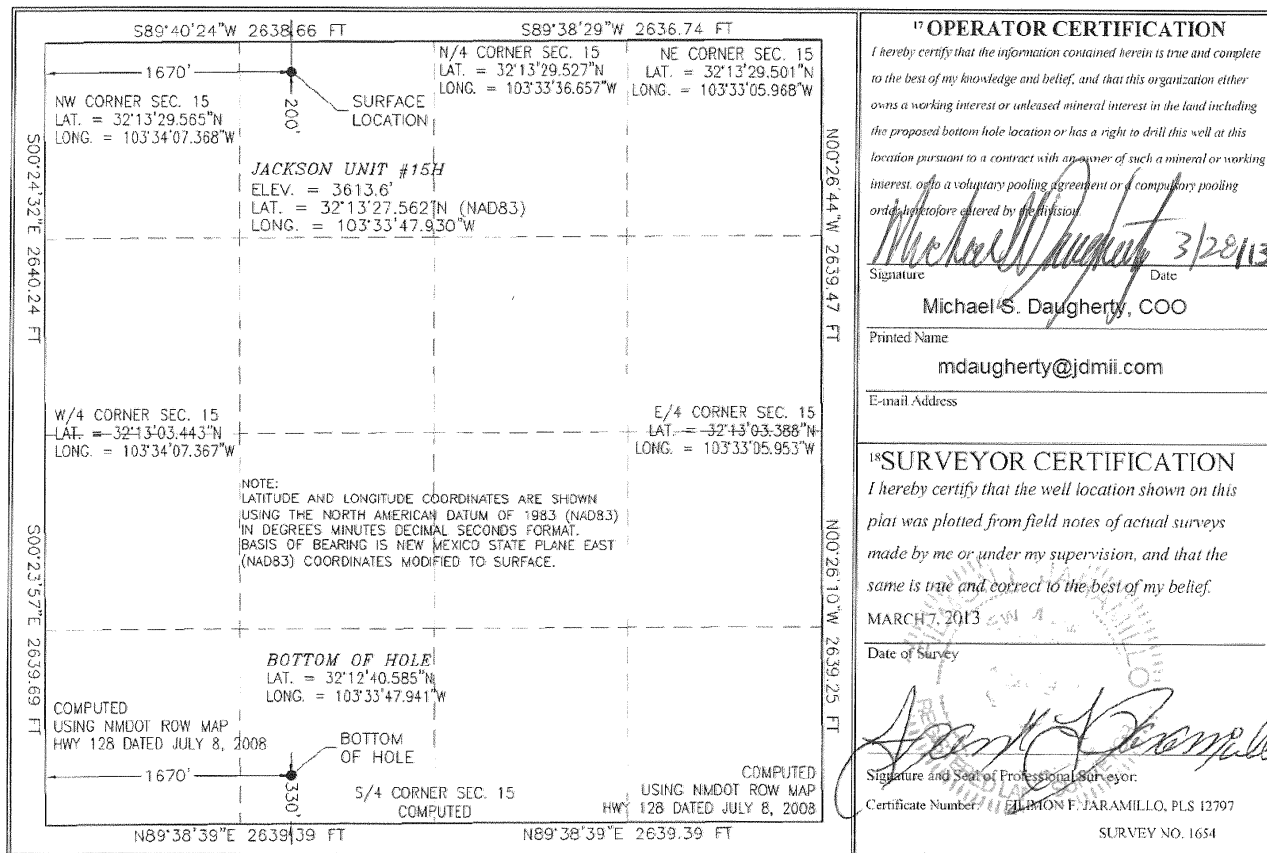
UL or lot no. C	Section 15	Township 24 S	Range 33 E	Lot Idn	Feet from the 200	North/South line NORTH	Feet from the 1670	East/West line WEST	County LEA
--------------------	---------------	------------------	---------------	---------	----------------------	---------------------------	-----------------------	------------------------	---------------

¹¹ Bottom Hole Location If Different From Surface

UL or lot no. N	Section 15	Township 24 S	Range 33 E	Lot Idn	Feet from the 330	North/South line SOUTH	Feet from the 1670	East/West line WEST	County LEA
--------------------	---------------	------------------	---------------	---------	----------------------	---------------------------	-----------------------	------------------------	---------------

¹² Dedicated Acres 160	¹³ Joint or Infill	¹⁴ Consolidation Code	¹⁵ Order No.
--------------------------------------	-------------------------------	----------------------------------	-------------------------

No allowable will be assigned to this completion until all interests have been consolidated or a non-standard unit has been approved by the division.



Permit Comments

Operator: MURCHISON OIL & GAS INC , 15363

Well: JACKSON UNIT #015H

API: 30-025-41086

Created By	Comment	Comment Date
pkautz	Land s/S	4/1/2013
CHERRERA	OCD RECIEVED FORM C144 CLEZ. OCD PERMIT #P1-05980	4/3/2013

Permit Conditions of Approval

Operator: MURCHISON OIL & GAS INC , 15363

Well: JACKSON UNIT #015H

API: 30-025-41086

OCD Reviewer	Condition
pkautz	Once the well is spud, to prevent ground water contamination through whole or partial conduits from the surface, the operator shall drill without interruption through the fresh water zone or zones and shall immediately set in cement the water protection string
pkautz	In order to seal off protectable water, the surface casing must be set 25' below top of Rustler Anhydrite.