

District I
1625 N. French Dr., Hobbs, NM 88240
Phone:(575) 393-6161 Fax:(575) 393-0720
District II
811 S. First St., Artesia, NM 88210
Phone:(575) 748-1283 Fax:(575) 748-9720
District III
1000 Rio Brazos Rd., Aztec, NM 87410
Phone:(505) 334-6178 Fax:(505) 334-6170
District IV
1220 S. St Francis Dr., Santa Fe, NM 87505
Phone:(505) 476-3470 Fax:(505) 476-3462

State of New Mexico
Energy, Minerals and Natural Resources
Oil Conservation Division
1220 S. St Francis Dr.
Santa Fe, NM 87505

Form C-101
August 1, 2011
Permit 165097

APPLICATION FOR PERMIT TO DRILL, RE-ENTER, DEEPEN, PLUGBACK, OR ADD A ZONE

1. Operator Name and Address CONOCOPHILLIPS COMPANY 3401 E. 30th Street Farmington, NM 87402		2. OGRID Number 217817
		3. API Number 30-025-41116
4. Property Code 31471	5. Property Name STATE F 1	6. Well No. 035

7. Surface Location

UL - Lot	Section	Township	Range	Lot Idn	Feet From	N/S Line	Feet From	E/W Line	County
F	1	21S	36E	14	2910	S	2465	W	LEA

8. Proposed Bottom Hole Location

UL - Lot	Section	Township	Range	Lot Idn	Feet From	N/S Line	Feet From	E/W Line	County
F	1	21S	36E	14	2910	S	2465	W	Lea

9. Pool Information

HARDY;BLINEBRY	29710
HARDY;TUBB-DRINKARD	29760

Additional Well Information

11. Work Type New Well	12. Well Type OIL	13. Cable/Rotary	14. Lease Type State	15. Ground Level Elevation 3497
16. Multiple Y	17. Proposed Depth 7224	18. Formation Drinkard	19. Contractor	20. Spud Date 6/15/2013
Depth to Ground water		Distance from nearest fresh water well		Distance to nearest surface water

21. Proposed Casing and Cement Program

Type	Hole Size	Casing Type	Casing Weight/ft	Setting Depth	Sacks of Cement	Estimated TOC
Surf	12.25	8.625	24	1332	800	0
Prod	7.875	5.5	17	7224	1250	0

Casing/Cement Program: Additional Comments

--

22. Proposed Blowout Prevention Program

Type	Working Pressure	Test Pressure	Manufacturer
Annular	3000	1500	Control Flowing
Blind	3000	3000	Shaffer LWS
Pipe	3000	3000	Shaffer LWS

23. I hereby certify that the information given above is true and complete to the best of my knowledge and belief. I further certify I have complied with 19.15.14.9 (A) NMAC <input checked="" type="checkbox"/> and/or 19.15.14.9 (B) NMAC <input checked="" type="checkbox"/> if applicable. Signature:	OIL CONSERVATION DIVISION Approved By: Paul Kautz
Printed Name: Electronically filed by Patsy Clugston	Title: Geologist
Title: Senior Regulatory Specialist	Approved Date: 4/16/2013 Expiration Date: 4/16/2015
Email Address: patsy.l.clugston@conocophillips.com	
Date: 4/9/2013 Phone: 505-326-9518	Conditions of Approval Attached

DISTRICT I
1625 N. French Dr., Hobbs, NM 88240
Phone (505) 393-8161 Fax: (505) 393-0720

DISTRICT II
1301 W. Grand Avenue, Artesia, NM 88210
Phone (505) 334-8178 Fax: (505) 334-0720

DISTRICT III
1000 Rio Brazos Rd., Aztec, NM 87410
Phone (505) 334-8178 Fax: (505) 334-0720

DISTRICT IV
1220 S. St. Francis Dr., Santa Fe, NM 87505
Phone (505) 476-2460 Fax: (505) 476-3462

State of New Mexico
Energy, Minerals and Natural Resources Department

OIL CONSERVATION DIVISION

1220 South St. Francis Dr.
Santa Fe, New Mexico 87505

Form C-102
Revised August 1, 2011

Submit one copy to appropriate
District Office

WELL LOCATION AND ACREAGE DEDICATION PLAT

☐ AMENDED REPORT

API Number	Pool Code 29710 and 29730	Pool Name Hardy; Blinebry and Hardy; Drinkard
Property Code 31471	Property Name STATE F-1	Well Number 35
UGRID No. 217817	Operator Name CONOCO PHILLIPS	Elevation 3497'

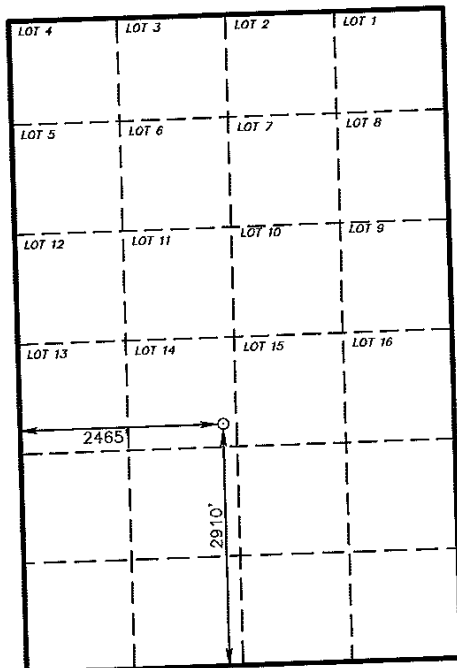
Surface Location

UL or lot No.	Section	Township	Range	Lot Idn	Feet from the	North/South line	Feet from the	East/West line	County
LOT 14	1	21 S	36 E		2910	SOUTH	2465	WEST	LEA

Bottom Hole Location If Different From Surface

UL or lot No.	Section	Township	Range	Lot Idn	Feet from the	North/South line	Feet from the	East/West line	County
Dedicated Acres 40	Joint or Infill	Consolidation Code	Order No.						

NO ALLOWABLE WILL BE ASSIGNED TO THIS COMPLETION UNTIL ALL INTERESTS HAVE BEEN CONSOLIDATED
OR A NON-STANDARD UNIT HAS BEEN APPROVED BY THE DIVISION



SCALE 1" = 2000'

SURFACE LOCATION
Lat - N 32°30'31.28"
Long - W 103°13'10.26"
NMSPC- N 550585.683
E 884696.413
(NAD-83)
Lat - N 32°30'30.84"
Long - W 103°13'08.56"
NMSPC- N 550524.415
E 843512.410
(NAD-27)

OPERATOR CERTIFICATION

I hereby certify that the information contained herein is true and complete to the best of my knowledge and belief, and that this organization either owns a working interest or unleased mineral interest in the land including the proposed bottom hole location or has a right to drill this well at this location pursuant to a contract with an owner of such a mineral or working interest, or to a voluntary pooling agreement or a compulsory pooling order heretofore entered by the division.

Susan B. Maunder 4/8/13
Signature Date

Susan B. Maunder
Printed Name
Susan.B.maunder@conocophillips.com
Email Address

SURVEYOR CERTIFICATION

I hereby certify that the well location shown on this plat was plotted from field notes of actual surveys made by me or under my supervision, and that the same is true and correct to the best of my belief.

NOVEMBER 19, 2011
Date Surveyed
Signature & Seal of Professional Surveyor
GARY L. JONES
PROFESSIONAL SURVEYOR
NEW MEXICO
W.S. 13425

Certificate No. Gary L. Jones 7977

BASIN SURVEYS 25425

District I
1625 N. French Dr., Hobbs, NM 88240
Phone:(505) 393-6161 Fax:(505) 393-0720
District II
811 S. First St., Artesia, NM 88210
Phone:(505) 748-1283 Fax:(505) 748-9720
District III
1000 Rio Brazos Rd., Aztec, NM 87410
Phone:(505) 334-6178 Fax:(505) 334-6170
District IV
1220 S. St Francis Dr., Santa Fe, NM 87505
Phone:(505) 476-3470 Fax:(505) 476-3462

State of New Mexico
Energy, Minerals and Natural Resources
Oil Conservation Division
1220 S. St Francis Dr.
Santa Fe, NM 87505

Form C-102
August 1, 2011
Permit 165097

WELL LOCATION AND ACREAGE DEDICATION PLAT

1. API Number 30-025-41116	2. Pool Code 29760	3. Pool Name HARDY,TUBB-DRINKARD
4. Property Code 31471	5. Property Name STATE F 1	6. Well No. 035
7. OGRID No. 217817	8. Operator Name CONOCOPHILLIPS COMPANY	9. Elevation 3497

10. Surface Location

UL - Lot F	Section 1	Township 21S	Range 36E	Lot Idn 14	Feet From 2910	N/S Line S	Feet From 2465	E/W Line W	County LEA
---------------	--------------	-----------------	--------------	---------------	-------------------	---------------	-------------------	---------------	---------------

11. Bottom Hole Location If Different From Surface

UL - Lot	Section	Township	Range	Lot Idn	Feet From	N/S Line	Feet From	E/W Line	County
12. Dedicated Acres 40.00	13. Joint or Infill	14. Consolidation Code	15. Order No.						

NO ALLOWABLE WILL BE ASSIGNED TO THIS COMPLETION UNTIL ALL INTERESTS HAVE BEEN CONSOLIDATED OR A NON-STANDARD UNIT HAS BEEN APPROVED BY THE DIVISION

<p style="text-align: center;">OPERATOR CERTIFICATION</p> <p><i>I hereby certify that the information contained herein is true and complete to the best of my knowledge and belief, and that this organization either owns a working interest or unleased mineral interest in the land including the proposed bottom hole location(s) or has a right to drill this well at this location pursuant to a contract with an owner of such a mineral or working interest, or to a voluntary pooling agreement or a compulsory pooling order heretofore entered by the division.</i></p> <p>E-Signed By: Patsy Clugston Title: Senior Regulatory Specialist Date: 4/9/2013</p> <hr/> <p style="text-align: center;">SURVEYOR CERTIFICATION</p> <p><i>I hereby certify that the well location shown on this plat was plotted from field notes of actual surveys made by me or under my supervision, and that the same is true and correct to the best of my belief.</i></p> <p>Surveyed By: Gary Jones Date of Survey: 11/19/2011 Certificate Number: 7977</p>	
---	--

Permit Comments

Operator: CONOCOPHILLIPS COMPANY , 217817

Well: STATE F 1 #035

API: 30-025-41116

Created By	Comment	Comment Date
pkautz	Land s/S	4/10/2013
CHERRERA	OCD RECEIVED FORM C144 CLEZ. OCD PERMIT # P1-06059	4/16/2013

Permit Conditions of Approval

Operator: CONOCOPHILLIPS COMPANY , 217817

Well: STATE F 1 #035

API: 30-025-41116

OCD Reviewer	Condition
pkautz	Once the well is spud, to prevent ground water contamination through whole or partial conduits from the surface, the operator shall drill without interruption through the fresh water zone or zones and shall immediately set in cement the water protection string
pkautz	In order to seal off protectable water, the surface casing must be set 25' below top of Rustler Anhydrite.