

District I
1625 N. French Dr., Hobbs, NM 88240
Phone:(575) 393-6161 Fax:(575) 393-0720
District II
811 S. First St., Artesia, NM 88210
Phone:(575) 748-1283 Fax:(575) 748-9720
District III
1000 Rio Brazos Rd., Aztec, NM 87410
Phone:(505) 334-6178 Fax:(505) 334-6170
District IV
1220 S. St Francis Dr., Santa Fe, NM 87505
Phone:(505) 476-3470 Fax:(505) 476-3462

State of New Mexico
Energy, Minerals and Natural Resources
Oil Conservation Division
1220 S. St Francis Dr.
Santa Fe, NM 87505

Form C-101
August 1, 2011
Permit 170495

APPLICATION FOR PERMIT TO DRILL, RE-ENTER, DEEPEN, PLUGBACK, OR ADD A ZONE

1. Operator Name and Address APACHE CORP 303 Veterans Airpark Lane Midland, TX 79705		2. OGRID Number 873
4. Property Code 302328		3. API Number 30-025-41282
5. Property Name BERTHA J BARBER		6. Well No. 016

7. Surface Location

UL - Lot	Section	Township	Range	Lot Idn	Feet From	N/S Line	Feet From	E/W Line	County
A	7	20S	37E	A	1310	N	853	E	LEA

8. Proposed Bottom Hole Location

UL - Lot	Section	Township	Range	Lot Idn	Feet From	N/S Line	Feet From	E/W Line	County
A	7	20S	37E	A	1310	N	853	E	Lea

9. Pool Information

EUNICE MONUMENT;GRAYBURG-SAN ANDRES	23000
-------------------------------------	-------

Additional Well Information

11. Work Type New Well	12. Well Type OIL	13. Cable/Rotary	14. Lease Type Private	15. Ground Level Elevation 3554
16. Multiple N	17. Proposed Depth 4150	18. Formation Grayburg	19. Contractor	20. Spud Date
Depth to Ground water		Distance from nearest fresh water well		Distance to nearest surface water

21. Proposed Casing and Cement Program

Type	Hole Size	Casing Type	Casing Weight/ft	Setting Depth	Sacks of Cement	Estimated TOC
Surf	11	8.625	24	1050	375	
Prod	7.875	5.5	17	3950	525	

Casing/Cement Program: Additional Comments

--

22. Proposed Blowout Prevention Program

Type	Working Pressure	Test Pressure	Manufacturer
Hydriil	3000	2000	

23. I hereby certify that the information given above is true and complete to the best of my knowledge and belief. I further certify I have complied with 19.15.14.9 (A) NMAC <input checked="" type="checkbox"/> and/or 19.15.14.9 (B) NMAC <input checked="" type="checkbox"/> , if applicable. Signature: Printed Name: Electronically filed by Bobby Smith Title: Email Address: bobby.smith@apachecorp.com Date: 7/23/2013	<div style="text-align: center;">OIL CONSERVATION DIVISION</div> Approved By: Paul Kautz Title: Geologist Approved Date: 7/30/2013 Expiration Date: 7/30/2015 Conditions of Approval Attached
Phone: 432-818-1020	

DISTRICT I
1625 N. French Dr., Hobbs, NM 88240
Phone: (575) 393-6161 Fax: (575) 393-0720
DISTRICT II
811 S. First St., Artesia, NM 88210
Phone: (575) 748-1283 Fax: (575) 748-9720
DISTRICT III
1000 Rio Brazos Road, Aztec, NM 87410
Phone: (505) 334-6178 Fax: (505) 334-6170
DISTRICT IV
1220 S. St. Francis Dr., Santa Fe, NM 87505
Phone: (505) 476-3460 Fax: (505) 476-3462

State of New Mexico
Energy, Minerals & Natural Resources Department
OIL CONSERVATION DIVISION
1220 South St. Francis Dr.
Santa Fe, New Mexico 87505

Form C-102
Revised August 1, 2011
Submit one copy to appropriate
District Office

AMENDED REPORT

WELL LOCATION AND ACREAGE DEDICATION PLAT

API Number 30-025-	Pool Code	Pool Name Monument, Grayburg/SAN Andres
Property Code	Property Name BERTHA J BARBER	Well Number 16
OGRID No. 873	Operator Name APACHE CORPORATION	Elevation 3554'

Surface Location

UL or lot No.	Section	Township	Range	Lot Idn	Feet from the	North/South line	Feet from the	East/West line	County
A	7	20-S	37-E		1310	NORTH	853	EAST	LEA

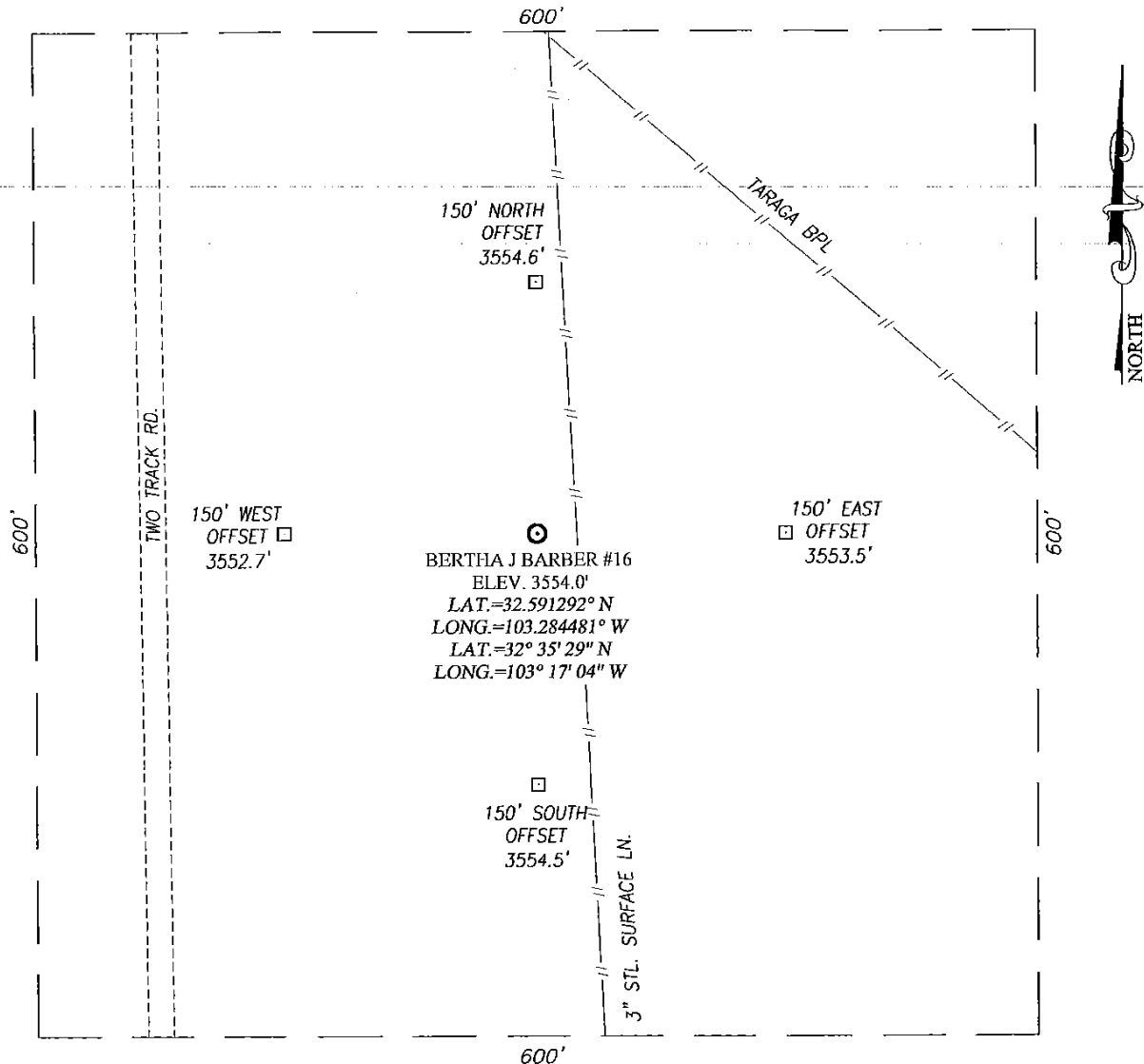
Bottom Hole Location If Different From Surface

UL or lot No.	Section	Township	Range	Lot Idn	Feet from the	North/South line	Feet from the	East/West line	County
Dedicated Acres	Joint or Infill	Consolidation Code	Order No.						

NO ALLOWABLE WILL BE ASSIGNED TO THIS COMPLETION UNTIL ALL INTERESTS HAVE BEEN CONSOLIDATED OR A NON-STANDARD UNIT HAS BEEN APPROVED BY THE DIVISION

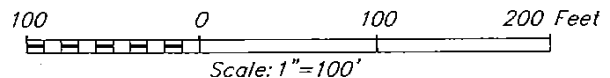
<p>GEODETIC COORDINATES NAD 27 NME</p> <p>SURFACE LOCATION Y=580416.8 N X=823042.6 E</p> <p>LAT.=32.591292° N LONG.=103.284481° W</p> <p>LAT.=32° 35' 29" N LONG.=103° 17' 04" W</p>	<p>1310'</p> <p>853'</p> <p>13.2'</p>	<p>OPERATOR CERTIFICATION</p> <p>I hereby certify that the information herein is true and complete to the best of my knowledge and belief, and that this organization either owns a working interest or unleased mineral interest in the land including the proposed bottom hole location or has a right to drill this well at this location pursuant to a contract with an owner of such mineral or working interest, or to a voluntary pooling agreement or a compulsory pooling order heretofore entered by the division.</p> <p><i>Michelle Cooper</i> 7-23-13 Signature Date</p> <p><i>Michelle Cooper</i> Printed Name</p> <p><i>michelle.cooper@apachecorp.com</i> E-mail Address</p>
		<p>SURVEYOR CERTIFICATION</p> <p>I hereby certify that the well location shown on this plat was plotted from field notes of actual surveys made by me or under my supervision, and that the same is true and correct to the best of my belief.</p> <p>JULY 9, 2013</p>
		<p>Date of Survey</p> <p>Signature & Seal of Professional Surveyor:</p> <p><i>Ronald J. Eidson</i> 07/18/2013</p> <p>Certification Number: Gary G. Eidson 12641 Ronald J. Eidson 3239</p> <p>ACK NWSC W.O. 13.11.0787</p>

SECTION 7, TOWNSHIP 20 SOUTH, RANGE 37 EAST, N.M.P.M.
LEA COUNTY **NEW MEXICO**



DIRECTIONS TO BERTHA J BARBER #16:

FROM THE INTERSECTION OF ST. HWY. 8 AND ST. HWY. 322
(MONUMENT) GO SOUTH APPROX. 2.0 MILES. TURN RIGHT AND
GO NORTHWEST APPROX. 1.3 MILES. TURN RIGHT AND GO
APPROX. 500 FEET. THE LOCATION STAKE IS 230 FEET EAST.



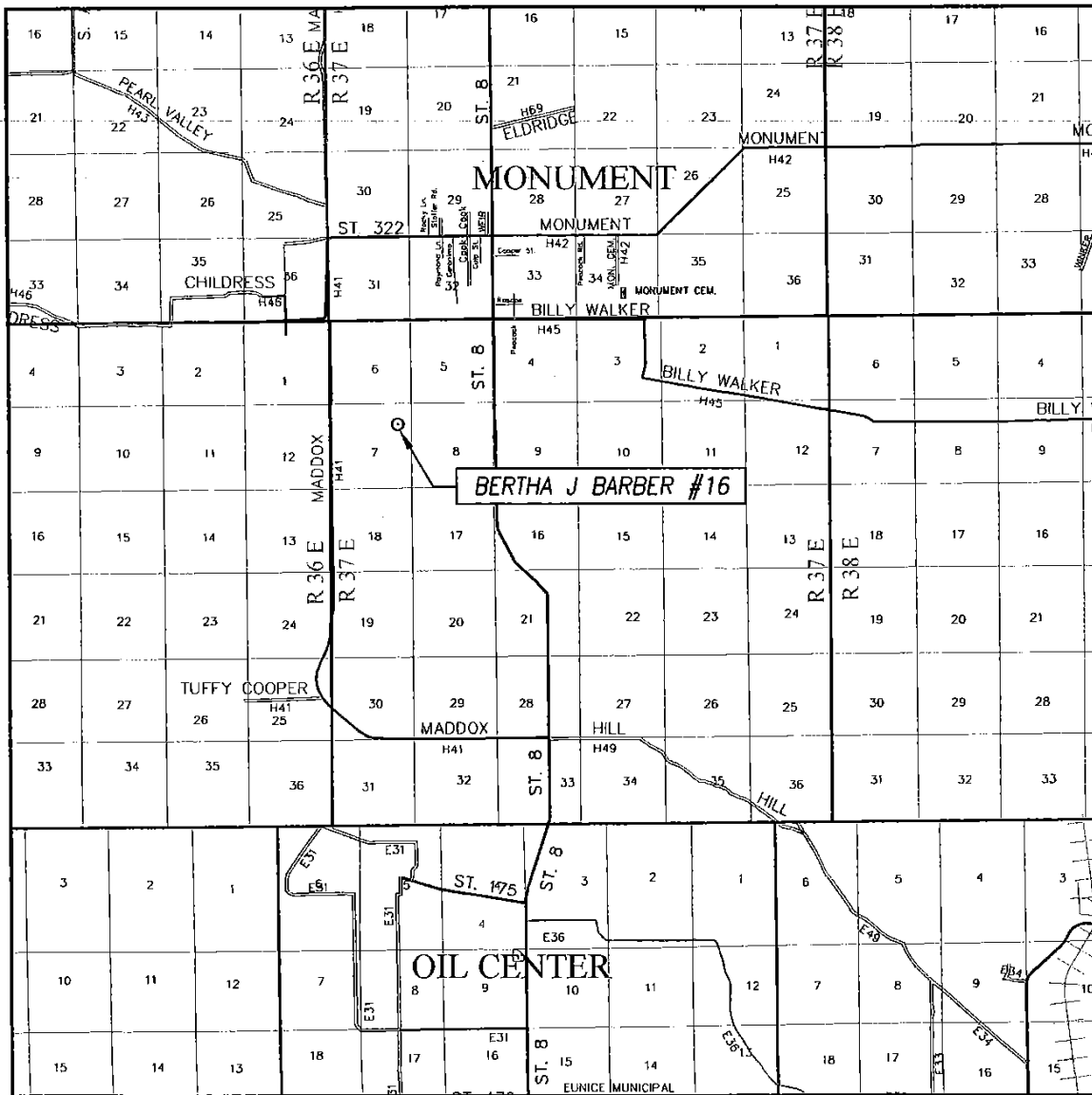
APACHE CORPORATION

BERTHA J BARBER #16 WELL
LOCATED 1310 FEET FROM THE NORTH LINE
AND 853 FEET FROM THE EAST LINE OF SECTION 7,
TOWNSHIP 20 SOUTH, RANGE 37 EAST, N.M.P.M.,
LEA COUNTY, NEW MEXICO

PROVIDING SURVEYING SERVICES
SINCE 1946
JOHN WEST SURVEYING COMPANY
412 N. DAL PASO
HOBBS, N.M. 88240
(575) 393-3117 www.jwsc.biz

Survey Date: 7/9/13	CAD Date: 7/18/13	Drawn By: ACK
W.O. No.: 13110787	Rev: .	Rel. W.O.: Sheet 1 of 1

VICINITY MAP



SCALE: 1" = 2 MILES

SEC. 7 TWP. 20-S RGE. 37-E

SURVEY N.M.P.M.

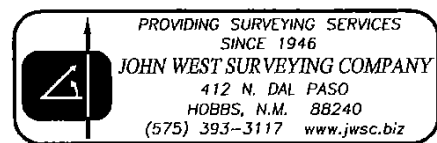
COUNTY LEA STATE NEW MEXICO

DESCRIPTION 1310' FNL & 853' FEL

ELEVATION 3554'

OPERATOR APACHE CORPORATION

LEASE BERTHA J BARBER



Permit Comments

Operator: APACHE CORP , 873
Well: BERTHA J BARBER #016
API: 30-025-41282

Created By	Comment	Comment Date
pkautz	Land p/P	7/23/2013

Permit Conditions of Approval

Operator: APACHE CORP , 873
Well: BERTHA J BARBER #016
API: 30-025-41282

OCD Reviewer	Condition
pkautz	Once the well is spud, to prevent ground water contamination through whole or partial conduits from the surface, the operator shall drill without interruption through the fresh water zone or zones and shall immediately set in cement the water protection string
pkautz	In order to seal off protectable water, surface casing must be set 25' below top Rustler Anhydrite
pkautz	Will require administrative order for non-standard location
DMULL	Approval for drilling ONLY - CANNOT produce until Non-Standard Location is approved by OCD Santa Fe Office.