

District I
1625 N. French Dr., Hobbs, NM 88240
Phone:(575) 393-8161 Fax:(575) 393-0720

District II
811 S. First St., Artesia, NM 88210
Phone:(575) 748-1283 Fax:(575) 748-9720

District III
1000 Rio Brazos Rd., Aztec, NM 87410
Phone:(505) 334-6178 Fax:(505) 334-6170

District IV
1220 S. St Francis Dr., Santa Fe, NM 87505
Phone:(505) 476-3470 Fax:(505) 476-3462

State of New Mexico
Energy, Minerals and Natural Resources
Oil Conservation Division
1220 S. St Francis Dr.
Santa Fe, NM 87505

Form C-101
August 1, 2011
Permit 176273

APPLICATION FOR PERMIT TO DRILL, RE-ENTER, DEEPEN, PLUGBACK, OR ADD A ZONE

1. Operator Name and Address APACHE CORP 303 Veterans Airpark Lane Midland, TX 79705		2. OGRID Number 873
4. Property Code 40198		3. API Number 30-015-41774
5. Property Name T REX STATE		6. Well No. 004

7. Surface Location

UL - Lot B	Section 31	Township 17S	Range 28E	Lot Idn	Feet From 890	N/S Line N	Feet From 1750	E/W Line E	County Eddy
---------------	---------------	-----------------	--------------	---------	------------------	---------------	-------------------	---------------	----------------

8. Proposed Bottom Hole Location

UL - Lot B	Section 31	Township 17S	Range 28E	Lot Idn B	Feet From 890	N/S Line N	Feet From 1750	E/W Line E	County Eddy
---------------	---------------	-----------------	--------------	--------------	------------------	---------------	-------------------	---------------	----------------

9. Pool Information

ARTESIA; GLORIETA-YESO (O)	96830
----------------------------	-------

Additional Well Information

11. Work Type New Well	12. Well Type OIL	13. Cable/Rotary	14. Lease Type State	15. Ground Level Elevation 3701
16. Multiple N	17. Proposed Depth 4700	18. Formation Yeso Formation	19. Contractor	20. Spud Date
Depth to Ground water		Distance from nearest fresh water well		Distance to nearest surface water

☒ We will be using a closed-loop system in lieu of lined pits

21. Proposed Casing and Cement Program

Type	Hole Size	Casing Size	Casing Weight/ft	Setting Depth	Sacks of Cement	Estimated TOC
Surf	11	8.625	24	500	190	
Prod	7.875	5.5	17	4700	710	

Casing/Cement Program: Additional Comments

--

22. Proposed Blowout Prevention Program

Type	Working Pressure	Test Pressure	Manufacturer
Hydril	3000	2000	

23. I hereby certify that the information given above is true and complete to the best of my knowledge and belief. I further certify I have complied with 19.15.14.9 (A) NMAC <input checked="" type="checkbox"/> and/or 19.15.14.9 (B) NMAC <input checked="" type="checkbox"/> , if applicable. Signature:	OIL CONSERVATION DIVISION
Printed Name: Electronically filed by Bobby Smith	Approved By: Randy Dade
Title:	Title: District Supervisor
Email Address: bobbysmith@apachecorp.com	Approved Date: 10/30/2013 Expiration Date: 10/30/2015
Date: 10/30/2013 Phone: 432-818-1020	Conditions of Approval Attached

DISTRICT I
1625 N. French Dr., Hobbs, NM 88240
Phone: (575) 393-6161 Fax: (575) 393-0720

DISTRICT II
811 S. First St., Artesia, NM 88210
Phone: (575) 748-1283 Fax: (575) 748-9720

DISTRICT III
1000 Rio Brazos Road, Aztec, NM 87410
Phone: (505) 334-6178 Fax: (505) 334-6170

DISTRICT IV
1220 S. St. Francis Dr., Santa Fe, NM 87505
Phone: (505) 476-3460 Fax: (505) 476-3462

State of New Mexico
Energy, Minerals & Natural Resources Department
OIL CONSERVATION DIVISION
1220 South St. Francis Dr.
Santa Fe, New Mexico 87505

Form C-102
Revised August 1, 2011
Submit one copy to appropriate
District Office

DAMENDED REPORT

WELL LOCATION AND ACREAGE DEDICATION PLAT

API Number 30-015-	Pool Code 96830	Pool Name Artesia; Glorieta - Yeso
Property Code	Property Name T REX STATE	Well Number 4
OGRID No. 873	Operator Name APACHE CORPORATION	Elevation 3701'

Surface Location

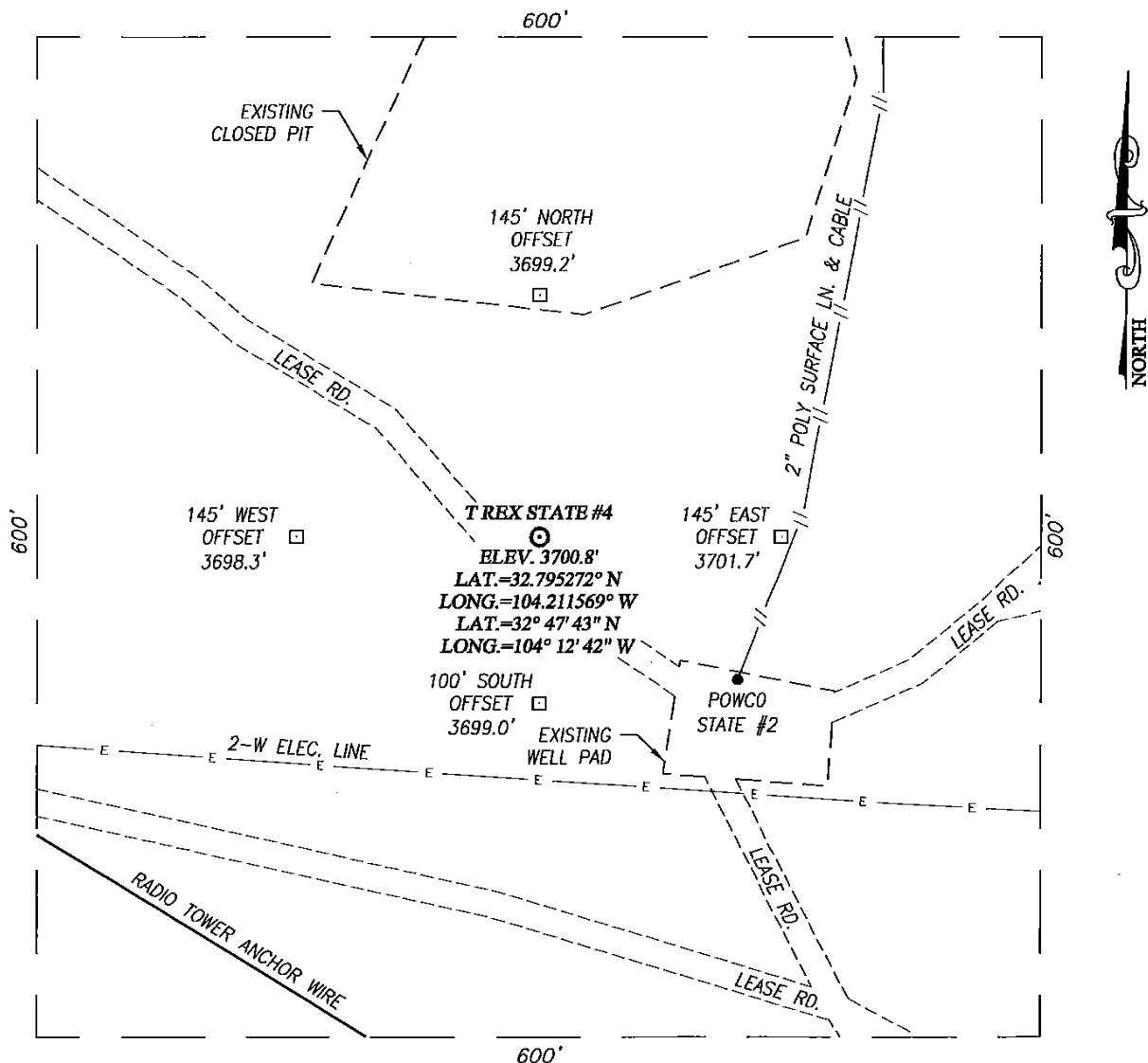
UL or lot No. B	Section 31	Township 17-S	Range 28-E	Lot Idn	Feet from the 890	North/South line NORTH	Feet from the 1750	East/West line EAST	County EDDY
---------------------------	----------------------	-------------------------	----------------------	---------	-----------------------------	----------------------------------	------------------------------	-------------------------------	-----------------------

Bottom Hole Location If Different From Surface

UL or lot No.	Section	Township	Range	Lot Idn	Feet from the	North/South line	Feet from the	East/West line	County
Dedicated Acres 40	Joint or Infill	Consolidation Code	Order No.						

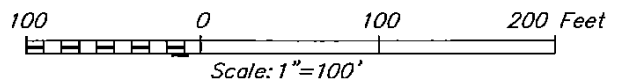
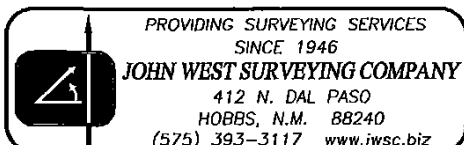
NO ALLOWABLE WILL BE ASSIGNED TO THIS COMPLETION UNTIL ALL INTERESTS HAVE BEEN CONSOLIDATED OR A NON-STANDARD UNIT HAS BEEN APPROVED BY THE DIVISION

<p>GEODETIC COORDINATES NAD 27 NME</p> <p>SURFACE LOCATION Y=653052.5 N X=537417.0 E</p> <p>LAT.=32.795272' N LONG.=104.211569' W</p> <p>LAT.=32° 47' 43" N LONG.=104° 12' 42" W</p>	<p>OPERATOR CERTIFICATION</p> <p>I hereby certify that the information herein is true and complete to the best of my knowledge and belief, and that this organization either owns a working interest or unleased mineral interest in the land including the proposed bottom hole location or has a right to drill this well at this location pursuant to a contract with an owner of such mineral or working interest, or to a voluntary pooling agreement or a compulsory pooling order heretofore entered by the division.</p> <p><i>Michelle Cooper</i> 10-30-13 Signature Date</p> <p><i>Michelle Cooper</i> Printed Name</p> <p><i>michelle.cooper@apachecorp.com</i> E-mail Address</p>
	<p>SURVEYOR CERTIFICATION</p> <p>I hereby certify that the well location shown on this plat was plotted from field notes of actual surveys made by me or under my supervision, and that the same is true and correct to the best of my belief.</p> <p>AUGUST 23, 2013</p> <p>Date of Survey</p> <p>Signature of Professional Surveyor: <i>Ronald J. Eidson</i></p> <p> Certificate Number: 3239 Surveyor Name: Ronald J. Eidson BKL JWSC W.O. 13.11.0946</p>



DIRECTIONS TO LOCATION

FROM THE INTERSECTION OF US, HWY. 82 AND CO. RD. 205 (TV TOWER) GO SOUTH ON CO. RD. 205 APPROX. 0.3 MILES; TURN RIGHT AND GO WEST ONTO A CALICHE LEASE ROAD AND GO APPROX. 400 FEET TO THE SOUTHWEST PAD CORNER; FOLLOW LEASE ROAD APPROX. 430 FEET TO A "Y" KEEP LEFT; TURN SOUTHWEST AND GO APPROX. 110 FEET TO WELL PAD. THIS STAKED LOCATION IS 117 FEET NORTHWEST FROM THE NORTHWEST PAD CORNER.

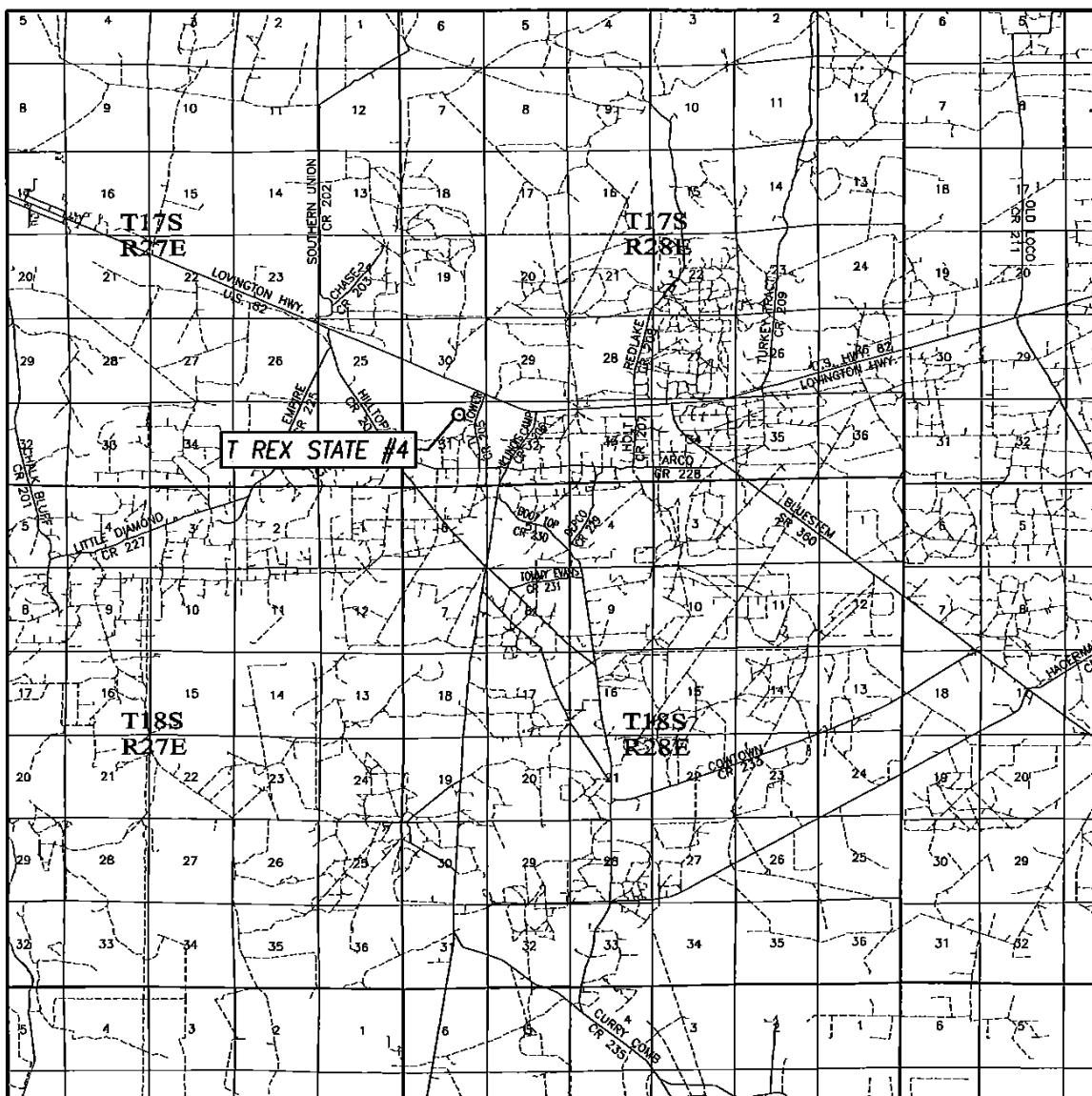


APACHE CORPORATION

T REX STATE #4 WELL
LOCATED 890 FEET FROM THE NORTH LINE
AND 1750 FEET FROM THE EAST LINE OF SECTION 31,
TOWNSHIP 17 SOUTH, RANGE 28 EAST, N.M.P.M.,
EDDY COUNTY, NEW MEXICO

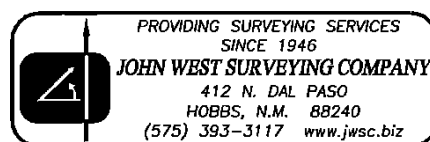
Survey Date: 8/23/13	CAD Date: 9/3/13	Drawn By: BKL
W.O. No.: 13110946	Rev: .	Rel. W.O.: Sheet 1 of 1

VICINITY MAP



SCALE: 1" = 2 MILES

SEC. 31 TWP. 17-S RGE. 28-E
 SURVEY N.M.P.M.
 COUNTY EDDY STATE NEW MEXICO
 DESCRIPTION 890' FNL & 1750' FEL
 ELEVATION 3701'
 OPERATOR APACHE CORPORATION
 LEASE T REX STATE



District I
 1625 N. French Dr., Hobbs, NM 88240
 Phone:(575) 393-8181 Fax:(575) 393-0720
District II
 811 S. First St., Artesia, NM 88210
 Phone:(575) 748-1283 Fax:(575) 748-9720
District III
 1000 Rio Brazos Rd., Aztec, NM 87410
 Phone:(505) 334-8178 Fax:(505) 334-8170
District IV
 1220 S. St Francis Dr., Santa Fe, NM 87505
 Phone:(505) 476-3470 Fax:(505) 476-3462

State of New Mexico
Energy, Minerals and Natural Resources
Oil Conservation Division
1220 S. St Francis Dr.
Santa Fe, NM 87505

Form APD Comments

 Permit 176273

PERMIT COMMENTS

Operator Name and Address: APACHE CORP [873] 303 Veterans Airpark Lane Midland, TX 79705		API Number: 30-015-41774
		Well: T REX STATE #004
Created By	Comment	Comment Date
CSHAPARD	Land s/S	10/30/2013

District I
1625 N. French Dr., Hobbs, NM 88240
Phone:(575) 393-8181 Fax:(575) 393-0720
District II
811 S. First St., Artesia, NM 88210
Phone:(575) 748-1283 Fax:(575) 748-9720
District III
1000 Rio Brazos Rd., Aztec, NM 87410
Phone:(505) 334-8178 Fax:(505) 334-8170
District IV
1220 S. St Francis Dr., Santa Fe, NM 87505
Phone:(505) 476-3470 Fax:(505) 476-3462

State of New Mexico
Energy, Minerals and Natural Resources
Oil Conservation Division
1220 S. St Francis Dr.
Santa Fe, NM 87505

Form APD Conditions
Permit 176273

PERMIT CONDITIONS OF APPROVAL

Operator Name and Address: APACHE CORP [873] 303 Veterans Airpark Lane Midland, TX 79705		API Number: 30-015-41774
		Well: T REX STATE #004
OCD Reviewer	Condition	
CSHAPARD	Once the well is spud, to prevent ground water contamination through whole or partial conduits from the surface, the operator shall drill without interruption through the fresh water zone or zones and shall immediately set in cement the water protection string	