

**District I**  
1625 N. French Dr., Hobbs, NM 88240  
Phone:(575) 393-8161 Fax:(575) 393-0720

**District II**  
811 S. First St., Artesia, NM 88210  
Phone:(575) 748-1283 Fax:(575) 748-9720

**District III**  
1000 Rio Brazos Rd., Aztec, NM 87410  
Phone:(505) 334-6178 Fax:(505) 334-6170

**District IV**  
1220 S. St Francis Dr., Santa Fe, NM 87505  
Phone:(505) 476-3470 Fax:(505) 476-3462

**State of New Mexico**  
**Energy, Minerals and Natural Resources**  
**Oil Conservation Division**  
**1220 S. St Francis Dr.**  
**Santa Fe, NM 87505**

Form C-101  
August 1, 2011  
Permit 178355

**APPLICATION FOR PERMIT TO DRILL, RE-ENTER, DEEPEN, PLUGBACK, OR ADD A ZONE**

1. Operator Name and Address APACHE CORP 303 Veterans Airpark Lane Midland, TX 79705		2. OGRID Number 873
4. Property Code 37346		3. API Number 30-025-41549
5. Property Name WEST BLINEBRY DRINKARD UNIT		6. Well No. 154

**7. Surface Location**

UL - Lot N	Section 16	Township 21S	Range 37E	Lot Idn	Feet From 895	N/S Line S	Feet From 1810	E/W Line W	County Lea
---------------	---------------	-----------------	--------------	---------	------------------	---------------	-------------------	---------------	---------------

**8. Proposed Bottom Hole Location**

UL - Lot N	Section 16	Township 21S	Range 37E	Lot Idn N	Feet From 970	N/S Line S	Feet From 1990	E/W Line W	County Lea
---------------	---------------	-----------------	--------------	--------------	------------------	---------------	-------------------	---------------	---------------

**9. Pool Information**

EUNICE;BLI-TU-DR, NORTH	22900
-------------------------	-------

**Additional Well Information**

11. Work Type New Well	12. Well Type OIL	13. Cable/Rotary	14. Lease Type State	15. Ground Level Elevation 3449
16. Multiple N	17. Proposed Depth 6950	18. Formation Drinkard	19. Contractor	20. Spud Date
Depth to Ground water		Distance from nearest fresh water well		Distance to nearest surface water

☒ We will be using a closed-loop system in lieu of lined pits

**21. Proposed Casing and Cement Program**

Type	Hole Size	Casing Size	Casing Weight/ft	Setting Depth	Sacks of Cement	Estimated TOC
Surf	11	8.625	24	1260	420	0
Prod	7.875	5.5	17	6955	1490	0

**Casing/Cement Program: Additional Comments**

--

**22. Proposed Blowout Prevention Program**

Type	Working Pressure	Test Pressure	Manufacturer
Hydril	3000	2000	

23. I hereby certify that the information given above is true and complete to the best of my knowledge and belief. I further certify I have complied with 19.15.14.9 (A) NMAC <input checked="" type="checkbox"/> and/or 19.15.14.9 (B) NMAC <input checked="" type="checkbox"/> , if applicable.  Signature: _____ Printed Name: Electronically filed by Bobby Smith	<b>OIL CONSERVATION DIVISION</b>
Title: _____ Email Address: bobbysmith@apachecorp.com Date: 12/11/2013	Approved By: Paul Kautz Title: Geologist Approved Date: 12/12/2013 Expiration Date: 12/12/2015 Conditions of Approval Attached

DISTRICT I  
1625 N. French Dr., Hobbs, NM 88240  
Phone: (575) 393-6161 Fax: (575) 393-0720

DISTRICT II  
811 S. First St., Artesia, NM 88210  
Phone: (575) 748-1283 Fax: (575) 748-9720

DISTRICT III  
1000 Rio Hrazos Road, Aztec, NM 87410  
Phone: (505) 334-6178 Fax: (505) 334-6170

DISTRICT IV  
1220 S. St. Francis Dr., Santa Fe, NM 87505  
Phone: (505) 476-3460 Fax: (505) 476-3462

State of New Mexico  
Energy, Minerals & Natural Resources Department  
OIL CONSERVATION DIVISION  
1220 South St. Francis Dr.  
Santa Fe, New Mexico 87505

Form C-102  
Revised August 1, 2011  
Submit one copy to appropriate  
District Office

☐ AMENDED REPORT

WELL LOCATION AND ACREAGE DEDICATION PLAT

API Number <b>30-025-</b>	Pool Code <b>22900</b>	Pool Name <b>Eunice, BLI-TU-DR, North</b>
Property Code	Property Name <b>WBDU</b>	Well Number <b>154W</b>
OGRID No. <b>873</b>	Operator Name <b>APACHE CORPORATION</b>	Elevation <b>3449'</b>

Surface Location

UL or lot No.	Section	Township	Range	Lot Idn	Feet from the	North/South line	Feet from the	East/West line	County
N	16	21-S	37-E		895	SOUTH	1810	WEST	LEA

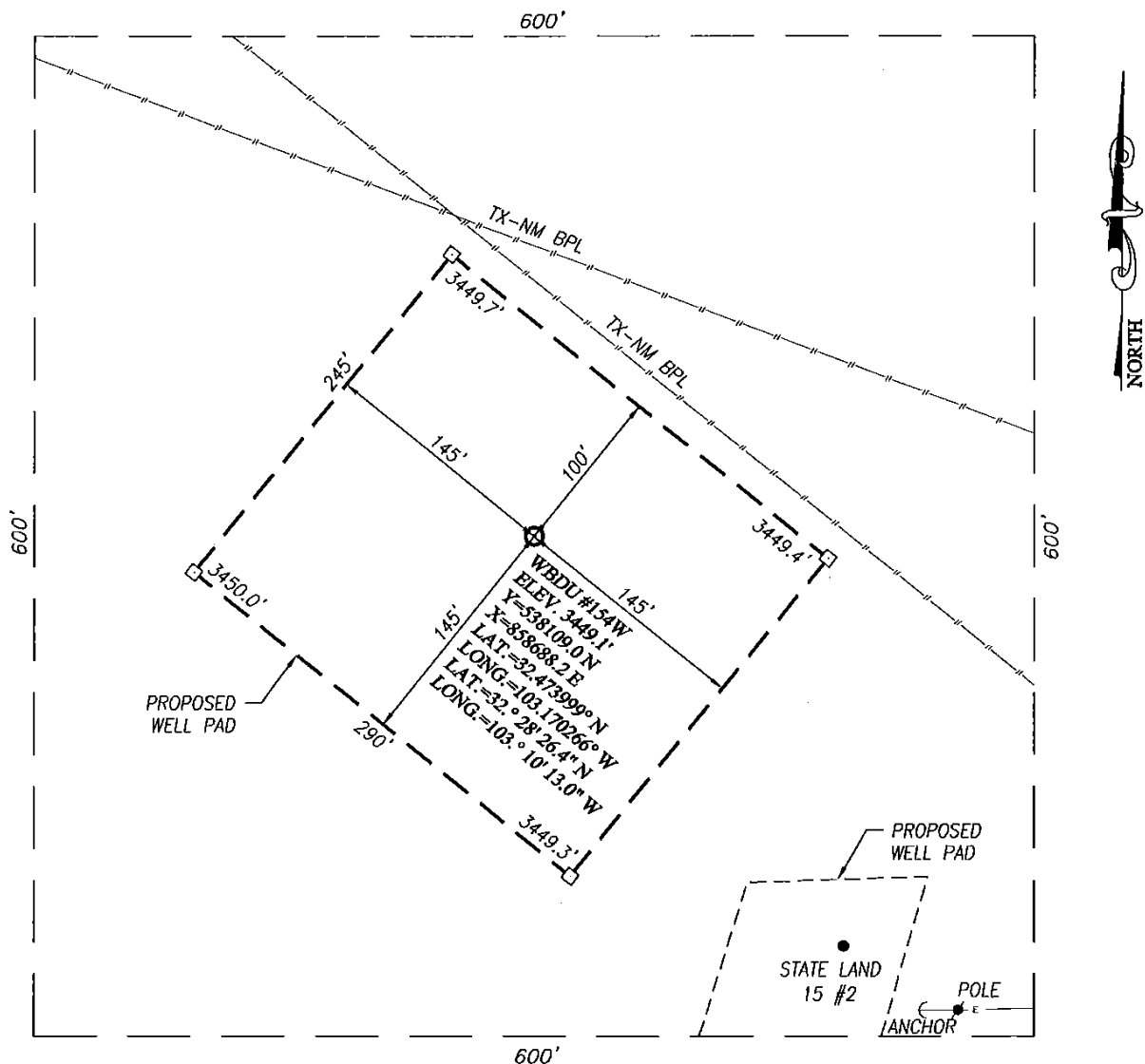
Bottom Hole Location If Different From Surface

UL or lot No.	Section	Township	Range	Lot Idn	Feet from the	North/South line	Feet from the	East/West line	County
N	16	21-S	37-E		970	SOUTH	1990	WEST	LEA

Dedicated Acres <b>40</b>	Joint or Infill	Consolidation Code	Order No.
------------------------------	-----------------	--------------------	-----------

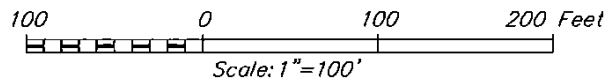
NO ALLOWABLE WILL BE ASSIGNED TO THIS COMPLETION UNTIL ALL INTERESTS HAVE BEEN CONSOLIDATED OR A NON-STANDARD UNIT HAS BEEN APPROVED BY THE DIVISION

	<p>GEODETIC COORDINATES NAD 27 NME</p> <p>SURFACE LOCATION Y=538109.0 N X=858688.2 E</p> <p>LAT.=32.473999° N LONG.=103.170266° W</p> <p>LAT.=32° 28' 26.4" N LONG.=103° 10' 13.0" W</p> <p>BOTTOM HOLE LOCATION Y=538185.9 N X=858867.4 E</p>	<p><b>OPERATOR CERTIFICATION</b></p> <p>I hereby certify that the information herein is true and complete to the best of my knowledge and belief, and that this organization either owns a working interest or unleased mineral interest in the land including the proposed bottom hole location or has a right to drill this well at this location pursuant to a contract with an owner of such mineral or working interest, or to a voluntary pooling agreement or a compulsory pooling order heretofore entered by the division.</p> <p><i>Michelle Cooper</i> 12-10-13 Signature Date</p> <p><i>Michelle Cooper</i> Printed Name</p> <p><i>michelle.cooper@apachecorp.com</i> E-mail Address</p>
	<p><b>SURVEYOR CERTIFICATION</b></p> <p>I hereby certify that the well location shown on this plat was plotted from field notes of actual surveys made by me or under my supervision, and that the same is true and correct to the best of my belief.</p> <p>NOVEMBER 20, 2013</p> <p>Date of Survey</p> <p>Signature &amp; Seal of Professional Surveyor:</p>	
	<p><i>Ronald J. Eidson</i> 02/03/2013 Certificate Number Gary G. Eidson 12641 Ronald J. Eidson 3239</p>	
	<p>BKL JWSC W.O. 13.11.1275</p>	



#### DIRECTIONS TO LOCATION

FROM THE INTERSECTION OF ST. HIGHWAY 207 (EUNICE BY-PASS) AND HILL ROAD GO SOUTH APPROX. 0.4 MILES; TURN RIGHT AND GO WEST APPROX. 0.6 MILES. THE LOCATION STAKE IS 340 FEET NORTH.

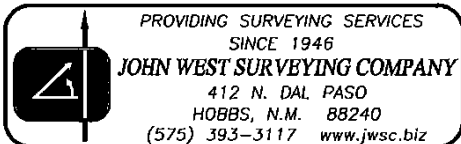


## APACHE CORPORATION

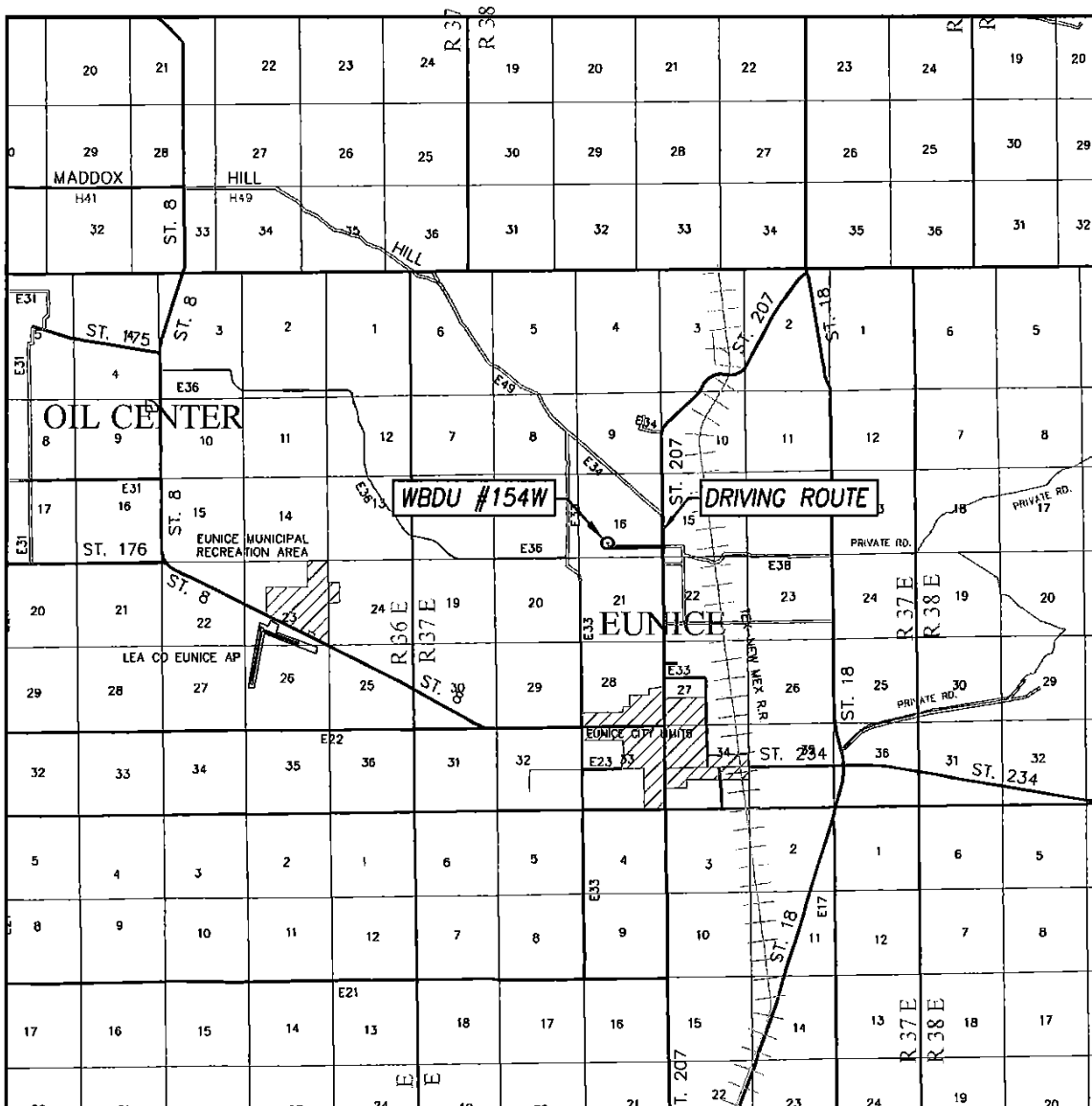
**WBDU #154W WELL**  
**LOCATED 895 FEET FROM THE SOUTH LINE**  
**AND 1810 FEET FROM THE WEST LINE OF SECTION 16,**  
**TOWNSHIP 21 SOUTH, RANGE 37 EAST, N.M.P.M.,**  
**LEA COUNTY, NEW MEXICO**

Survey Date: 11/20/13	CAD Date: 12/2/13	Drawn By: BKL
W.O. No.: 13111275	Rev. :	Rel. W.O.:

Sheet 1 of 1



# VICINITY MAP



SCALE: 1" = 2 MILES

DRIVING ROUTE: SEE LOCATION MAP

SEC. 16 TWP. 21-S RGE. 37-E

SURVEY N.M.P.M.

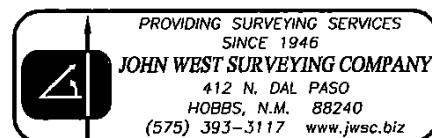
COUNTY LEA STATE NEW MEXICO

DESCRIPTION 895' FSL & 1810' FWL

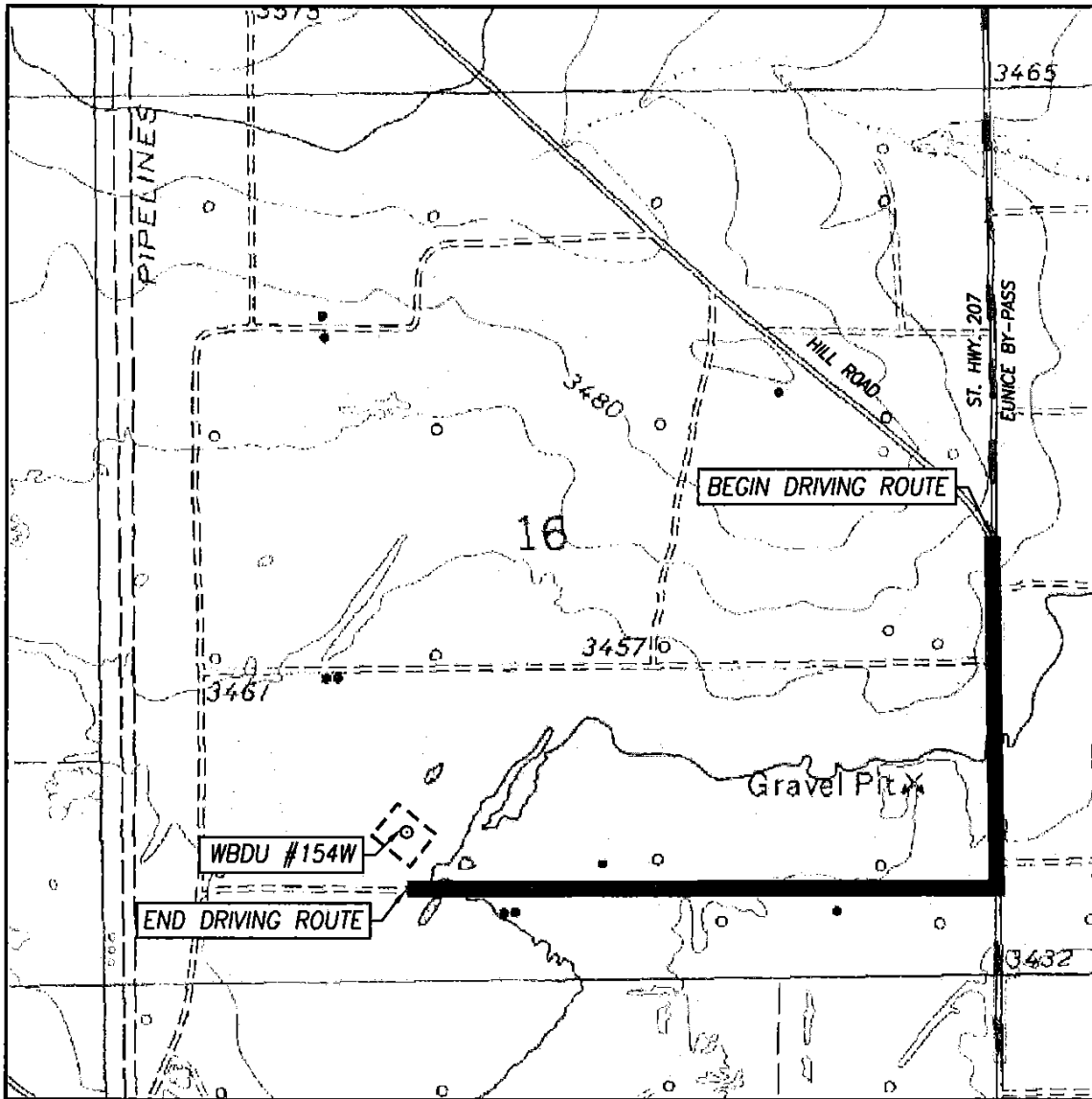
ELEVATION 3449'

OPERATOR APACHE CORPORATION

LEASE WBDU



# LOCATION VERIFICATION MAP



SCALE: 1" = 1000'

CONTOUR INTERVAL:  
EUNICE, N.M. - 10'

SEC. 16 TWP. 21-S RGE. 37-E

SURVEY \_\_\_\_\_ N.M.P.M.

COUNTY LEA STATE NEW MEXICO

DESCRIPTION 895' FSL & 1810' FWL

ELEVATION 3449'

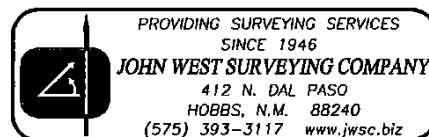
OPERATOR APACHE CORPORATION

LEASE WBDU

U.S.G.S. TOPOGRAPHIC MAP  
EUNICE, N.M.

## DIRECTIONS TO LOCATION

FROM THE INTERSECTION OF ST. HIGHWAY 207 (EUNICE BY-PASS) AND HILL ROAD GO SOUTH APPROX. 0.4 MILES; TURN RIGHT AND GO WEST APPROX. 0.6 MILES. THE LOCATION STAKE IS 340 FEET NORTH.



**District I**  
1625 N. French Dr., Hobbs, NM 88240  
Phone:(575) 393-8181 Fax:(575) 393-0720  
**District II**  
811 S. First St., Artesia, NM 88210  
Phone:(575) 748-1283 Fax:(575) 748-9720  
**District III**  
1000 Rio Brazos Rd., Aztec, NM 87410  
Phone:(505) 334-8178 Fax:(505) 334-8170  
**District IV**  
1220 S. St Francis Dr., Santa Fe, NM 87505  
Phone:(505) 476-3470 Fax:(505) 476-3462

**State of New Mexico**  
**Energy, Minerals and Natural Resources**  
**Oil Conservation Division**  
**1220 S. St Francis Dr.**  
**Santa Fe, NM 87505**

Form APD Comments  
  
Permit 178355

**PERMIT COMMENTS**

Operator Name and Address: APACHE CORP [873] 303 Veterans Airpark Lane Midland, TX 79705	API Number: 30-025-41549
	Well: WEST BLINEBRY DRINKARD UNIT #154

Created By	Comment	Comment Date
------------	---------	--------------

**District I**  
1625 N. French Dr., Hobbs, NM 88240  
Phone:(575) 393-8161 Fax:(575) 393-0720  
**District II**  
811 S. First St., Artesia, NM 88210  
Phone:(575) 748-1283 Fax:(575) 748-9720  
**District III**  
1000 Rio Brazos Rd., Aztec, NM 87410  
Phone:(505) 334-6178 Fax:(505) 334-6170  
**District IV**  
1220 S. St Francis Dr., Santa Fe, NM 87505  
Phone:(505) 476-3470 Fax:(505) 476-3462

**State of New Mexico**  
**Energy, Minerals and Natural Resources**  
**Oil Conservation Division**  
**1220 S. St Francis Dr.**  
**Santa Fe, NM 87505**

Form APD Conditions

Permit 178355

**PERMIT CONDITIONS OF APPROVAL**

Operator Name and Address: APACHE CORP [873] 303 Veterans Airpark Lane Midland, TX 79705	API Number: 30-025-41549
	Well: WEST BLINEBRY DRINKARD UNIT #154

OCD Reviewer	Condition
pkautz	Will require a directional survey with the C-104
pkautz	Pit construction and closure must satisfy all requirements of your approved plan, O.C.D. Rule 19.15.2.50, and the Pit and Below-Grade Tank Guidelines
pkautz	Once the well is spud, to prevent ground water contamination through whole or partial conduits from the surface, the operator shall drill without interruption through the fresh water zone or zones and shall immediately set in cement the water protection string
pkautz	Surface casing must be set 25' below top of Rustler Anhydrite in order to seal off protectable water