

District I
1625 N. French Dr., Hobbs, NM 88240
Phone:(575) 393-8181 Fax:(575) 393-0720

District II
811 S. First St., Artesia, NM 88210
Phone:(575) 748-1283 Fax:(575) 748-9720

District III
1000 Rio Brazos Rd., Aztec, NM 87410
Phone:(505) 334-6178 Fax:(505) 334-6170

District IV
1220 S. St Francis Dr., Santa Fe, NM 87505
Phone:(505) 476-3470 Fax:(505) 476-3462

State of New Mexico
Energy, Minerals and Natural Resources
Oil Conservation Division
1220 S. St Francis Dr.
Santa Fe, NM 87505

Form C-101
August 1, 2011
Permit 180341

APPLICATION FOR PERMIT TO DRILL, RE-ENTER, DEEPEN, PLUGBACK, OR ADD A ZONE

1. Operator Name and Address APACHE CORP 303 Veterans Airpark Lane Midland, TX 79705		2. OGRID Number 873
4. Property Code 22503		3. API Number 30-025-41618
5. Property Name NORTHEAST DRINKARD UNIT		6. Well No. 635

7. Surface Location

UL - Lot	D	Section	14	Township	21S	Range	37E	Lot Idn		Feet From	1230	N/S Line	N	Feet From	680	E/W Line	W	County	Lea
----------	---	---------	----	----------	-----	-------	-----	---------	--	-----------	------	----------	---	-----------	-----	----------	---	--------	-----

8. Proposed Bottom Hole Location

UL - Lot	E	Section	14	Township	21S	Range	37E	Lot Idn	E	Feet From	1390	N/S Line	N	Feet From	630	E/W Line	W	County	Lea
----------	---	---------	----	----------	-----	-------	-----	---------	---	-----------	------	----------	---	-----------	-----	----------	---	--------	-----

9. Pool Information

EUNICE;BLI-TU-DR, NORTH	22900
-------------------------	-------

Additional Well Information

11. Work Type New Well	12. Well Type OIL	13. Cable/Rotary	14. Lease Type Private	15. Ground Level Elevation 3433
16. Multiple N	17. Proposed Depth 6950	18. Formation Drinkard	19. Contractor	20. Spud Date
Depth to Ground water		Distance from nearest fresh water well		Distance to nearest surface water

☒ We will be using a closed-loop system in lieu of lined pits

21. Proposed Casing and Cement Program

Type	Hole Size	Casing Size	Casing Weight/ft	Setting Depth	Sacks of Cement	Estimated TOC
Surf	11	8.625	24	1263	450	0
Prod	7.875	5.5	17	6955	1300	0

Casing/Cement Program: Additional Comments

--

22. Proposed Blowout Prevention Program

Type	Working Pressure	Test Pressure	Manufacturer
Hydril	3000	2000	

23. I hereby certify that the information given above is true and complete to the best of my knowledge and belief. I further certify I have complied with 19.15.14.9 (A) NMAC <input checked="" type="checkbox"/> and/or 19.15.14.9 (B) NMAC <input checked="" type="checkbox"/> , if applicable. Signature: _____ Printed Name: Electronically filed by Bobby Smith Title: Email Address: bobby.smith@apachecorp.com Date: 1/23/2014	<div style="text-align: center;">OIL CONSERVATION DIVISION</div> Approved By: Paul Kautz Title: Geologist Approved Date: 1/24/2014 Expiration Date: 1/24/2016 Conditions of Approval Attached
Phone: 432-818-1020	

DISTRICT I
1625 N. French Dr., Hobbs, NM 88240
Phone: (575) 393-6161 Fax: (575) 393-0720

DISTRICT II
811 S. First St., Artesia, NM 88210
Phone: (575) 748-1283 Fax: (575) 748-9720

DISTRICT III
1000 Rio Brazos Road, Aztec, NM 87410
Phone: (505) 334-6178 Fax: (505) 334-6170

DISTRICT IV
1220 S. St. Francis Dr., Santa Fe, NM 87505
Phone: (505) 476-3460 Fax: (505) 476-3462

State of New Mexico
Energy, Minerals & Natural Resources Department
OIL CONSERVATION DIVISION
1220 South St. Francis Dr.
Santa Fe, New Mexico 87505

Form C-102
Revised August 1, 2011
Submit one copy to appropriate
District Office

AMENDED REPORT

WELL LOCATION AND ACREAGE DEDICATION PLAT

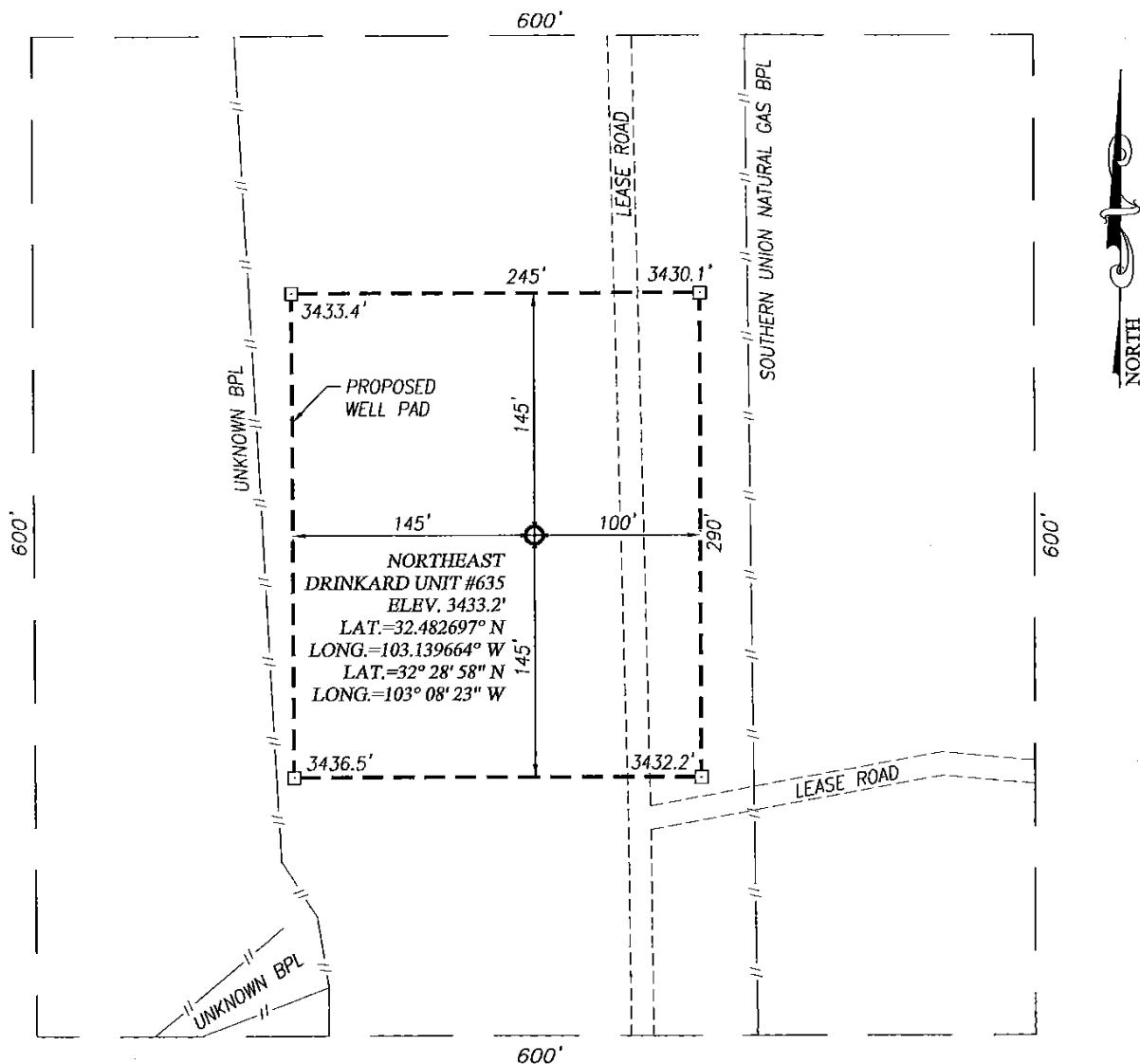
API Number 30-025-	Pool Code 22900	Pool Name Eunice, BLI-TU-DR, North
Property Code	Property Name NORTHEAST DRINKARD UNIT	Well Number 635
OGRID No. 873	Operator Name APACHE CORPORATION	Elevation 3433'

Surface Location									
UL or lot No.	Section	Township	Range	Lot Idn	Feet from the	North/South line	Feet from the	East/West line	County
D	14	21-S	37-E		1230	NORTH	680	WEST	LEA

Bottom Hole Location If Different From Surface									
UL or lot No.	Section	Township	Range	Lot Idn	Feet from the	North/South line	Feet from the	East/West line	County
E	14	21-S	37-E		1390	NORTH	630	WEST	LEA
Dedicated Acres 40	Joint or Infill	Consolidation Code	Order No.						

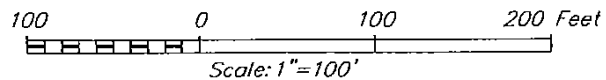
NO ALLOWABLE WILL BE ASSIGNED TO THIS COMPLETION UNTIL ALL INTERESTS HAVE BEEN CONSOLIDATED OR A NON-STANDARD UNIT HAS BEEN APPROVED BY THE DIVISION

		<p>OPERATOR CERTIFICATION</p> <p>I hereby certify that the information herein is true and complete to the best of my knowledge and belief, and that this organization either owns a working interest or unleased mineral interest in the land including the proposed bottom hole location or has a right to drill this well at this location pursuant to a contract with an owner of such mineral or working interest, or to a voluntary pooling agreement or a compulsory pooling order heretofore entered by the division.</p> <p><i>Michelle Cooper</i> 1-23-13 Signature Date</p> <p><i>Michelle Cooper</i> Printed Name</p> <p><i>michelle.cooper@apachecorp.com</i> E-mail Address</p>	
<p>GEODETIC COORDINATES NAD 27 NME</p> <p>SURFACE LOCATION Y=541377.7 N X=868091.0 E</p> <p>LAT.=32.482697° N LONG.=103.139664° W</p> <p>LAT.=32° 28' 58" N LONG.=103° 08' 23" W</p> <p>BOTTOM HOLE LOCATION Y=541217.1 N X=868042.7 E</p>		<p>SURVEYOR CERTIFICATION</p> <p>I hereby certify that the well location shown on this plat was plotted from field notes of actual surveys made by me or under my supervision, and that the same is true and correct to the best of my belief.</p> <p>DECEMBER 23, 2013</p> <p>Date of Survey</p> <p>Signature & Seal of Professional Surveyor:</p> <p><i>Gary G. Eidson</i> 12641 Certificate Number Gary G. Eidson 12641 Ronald J. Eidson 3239</p> <p>BKL JWSC W.O.: 13.11.1379</p>	



DIRECTIONS TO LOCATION

FROM THE INTERSECTION OF ST. HIGHWAY 248 AND HILL ROAD, GO NORTH ON ST. HWY. 248 APPROX. 0.5 MILES; TURN RIGHT AND GO EAST APPROX. 0.5 MILES VEER RIGHT AND GO SOUTHEAST APPROX. 0.2 MILES; VEER LEFT AND GO EAST 0.3 MILES; TURN LEFT AND GO NORTH APPROX. 0.1 MILE; TURN RIGHT AND GO EAST APPROX. 0.3 MILES; TURN RIGHT AND GO SOUTH APPROX. 0.4 MILES TO THIS STAKED LOCATION.



APACHE CORPORATION

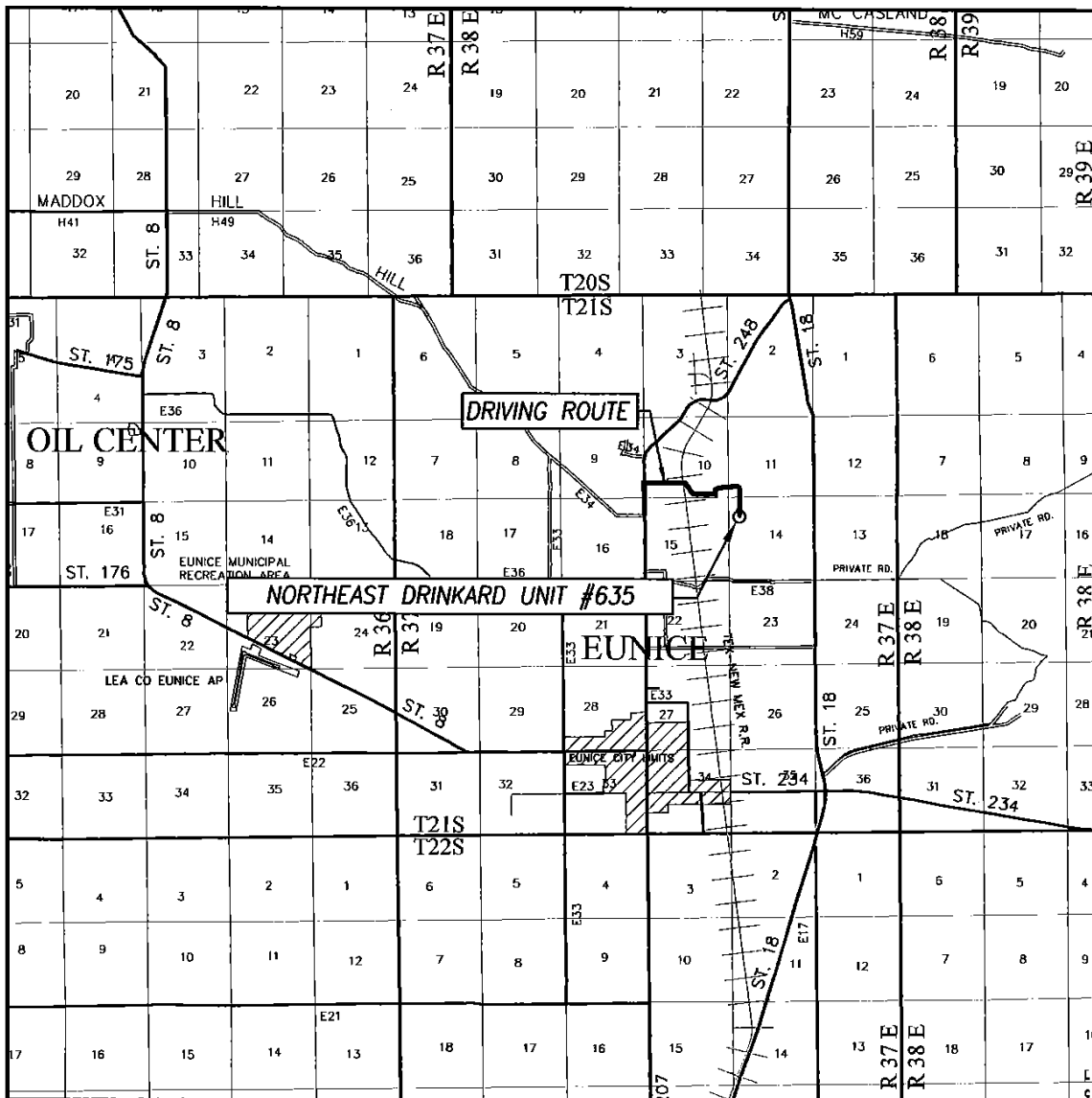
NORTHEAST DRINKARD UNIT #635 WELL
LOCATED 1230 FEET FROM THE NORTH LINE
AND 680 FEET FROM THE WEST LINE OF SECTION 14,
TOWNSHIP 21 SOUTH, RANGE 37 EAST, N.M.P.M.,
LEA COUNTY, NEW MEXICO

PROVIDING SURVEYING SERVICES
SINCE 1946
JOHN WEST SURVEYING COMPANY
412 N. DAL PASO
HOBBS, N.M. 88240
(575) 393-3117 www.jwsc.biz

Survey Date: 12/23/13	CAD Date: 1/2/13	Drawn By: BKL
W.O. No.: 13111379	Rev. :	Rel. W.O.:

Sheet 1 of 1

VICINITY MAP



SCALE: 1" = 2 MILES

DRIVING ROUTE: SEE LOCATION VERIFICATION MAP

SEC. 14 TWP. 21-S RGE. 37-E

SURVEY N.M.P.M.

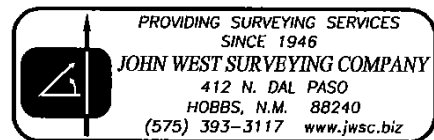
COUNTY LEA STATE NEW MEXICO

DESCRIPTION 1230' FNL & 680' FWL

ELEVATION 3433'

OPERATOR APACHE CORPORATION

LEASE NORTHEAST DRINKARD UNIT



District I
1625 N. French Dr., Hobbs, NM 88240
Phone:(575) 393-8181 Fax:(575) 393-0720
District II
811 S. First St., Artesia, NM 88210
Phone:(575) 748-1283 Fax:(575) 748-9720
District III
1000 Rio Brazos Rd., Aztec, NM 87410
Phone:(505) 334-8178 Fax:(505) 334-8170
District IV
1220 S. St Francis Dr., Santa Fe, NM 87505
Phone:(505) 476-3470 Fax:(505) 476-3462

State of New Mexico
Energy, Minerals and Natural Resources
Oil Conservation Division
1220 S. St Francis Dr.
Santa Fe, NM 87505

Form APD Comments

Permit 180341

PERMIT COMMENTS

Operator Name and Address: APACHE CORP [873] 303 Veterans Airpark Lane Midland, TX 79705	API Number: 30-025-41618
	Well: NORTHEAST DRINKARD UNIT #635

Created By	Comment	Comment Date
------------	---------	--------------

District I

1625 N. French Dr., Hobbs, NM 88240
Phone:(575) 393-8161 Fax:(575) 393-0720

District II

811 S. First St., Artesia, NM 88210
Phone:(575) 748-1283 Fax:(575) 748-9720

District III

1000 Rio Brazos Rd., Aztec, NM 87410
Phone:(505) 334-6178 Fax:(505) 334-6170

District IV

1220 S. St Francis Dr., Santa Fe, NM 87505
Phone:(505) 476-3470 Fax:(505) 476-3462

Form APD Conditions

Permit 180341

State of New Mexico
Energy, Minerals and Natural Resources
Oil Conservation Division
1220 S. St Francis Dr.
Santa Fe, NM 87505

PERMIT CONDITIONS OF APPROVAL

Operator Name and Address: APACHE CORP [873] 303 Veterans Airpark Lane Midland, TX 79705	API Number: 30-025-41618
	Well: NORTHEAST DRINKARD UNIT #635

OCD Reviewer	Condition
DMULL	Pit construction and closure must satisfy all requirements of your approved plan, O.C.D. Rule 19.15.2.50, and the Pit and Below-Grade Tank Guidelines
DMULL	Once the well is spud, to prevent ground water contamination through whole or partial conduits from the surface, the operator shall drill without interruption through the fresh water zone or zones and shall immediately set in cement the water protection string
pkautz	SURFACE & PRODUCTION CASING - Cement must circulate to surface
pkautz	Will require a directional survey with the C-104