

**District I**  
1625 N. French Dr., Hobbs, NM 88240  
Phone:(575) 393-6161 Fax:(575) 393-0720

**District II**  
811 S. First St., Artesia, NM 88210  
Phone:(575) 748-1283 Fax:(575) 748-9720

**District III**  
1000 Rio Brazos Rd., Aztec, NM 87410  
Phone:(505) 334-6178 Fax:(505) 334-6170

**District IV**  
1220 S. St Francis Dr., Santa Fe, NM 87505  
Phone:(505) 476-3470 Fax:(505) 476-3462

**State of New Mexico**  
**Energy, Minerals and Natural Resources**  
**Oil Conservation Division**  
**1220 S. St Francis Dr.**  
**Santa Fe, NM 87505**

Form C-101  
August 1, 2011  
Permit 186015

**APPLICATION FOR PERMIT TO DRILL, RE-ENTER, DEEPEN, PLUGBACK, OR ADD A ZONE**

<b>1. Operator Name and Address</b> BTA OIL PRODUCERS, LLC 104 S. Pecos Midland, TX 79701		<b>2. OGRID Number</b> 260297
<b>4. Property Code</b> 305313		<b>3. API Number</b> 30-025-41846
<b>5. Property Name</b> PEARL 692 LTD		<b>6. Well No.</b> 003H

**7. Surface Location**

UL - Lot <b>M</b>	Section <b>31</b>	Township <b>19S</b>	Range <b>35E</b>	Lot Idn <b>4</b>	Feet From <b>180</b>	N/S Line <b>S</b>	Feet From <b>430</b>	E/W Line <b>W</b>	County <b>Lea</b>
----------------------	----------------------	------------------------	---------------------	---------------------	-------------------------	----------------------	-------------------------	----------------------	----------------------

**8. Proposed Bottom Hole Location**

UL - Lot <b>D</b>	Section <b>31</b>	Township <b>19S</b>	Range <b>35E</b>	Lot Idn <b>1</b>	Feet From <b>330</b>	N/S Line <b>N</b>	Feet From <b>430</b>	E/W Line <b>W</b>	County <b>Lea</b>
----------------------	----------------------	------------------------	---------------------	---------------------	-------------------------	----------------------	-------------------------	----------------------	----------------------

**9. Pool Information**

WC-025 G-08 S203506D;BONE SPRING	97983
----------------------------------	-------

**Additional Well Information**

11. Work Type <b>New Well</b>	12. Well Type <b>OIL</b>	13. Cable/Rotary	14. Lease Type <b>State</b>	15. Ground Level Elevation <b>3702</b>
16. Multiple <b>N</b>	17. Proposed Depth <b>15580</b>	18. Formation <b>Bone Spring</b>	19. Contractor	20. Spud Date <b>5/31/2014</b>
Depth to Ground water		Distance from nearest fresh water well		Distance to nearest surface water

☒ We will be using a closed-loop system in lieu of lined pits

**21. Proposed Casing and Cement Program**

Type	Hole Size	Casing Size	Casing Weight/ft	Setting Depth	Sacks of Cement	Estimated TOC
Surf	17.5	13.375	54.5	1940	1440	0
Int1	12.25	9.625	36	3750	1000	0
Prod	8.75	5.5	17	15580	1900	3500

**Casing/Cement Program: Additional Comments**

Will provide directional survey with completion report and C104.
--

**22. Proposed Blowout Prevention Program**

Type	Working Pressure	Test Pressure	Manufacturer
Annular	3000	3000	

23. I hereby certify that the information given above is true and complete to the best of my knowledge and belief. I further certify I have complied with 19.15.14.9 (A) NMAC <input checked="" type="checkbox"/> and/or 19.15.14.9 (B) NMAC <input type="checkbox"/> , if applicable.  Signature: _____ Printed Name: <b>Electronically filed by Pam Inskeep</b> Title: <b>Regulatory Administrator</b> Email Address: <b>pinskeep@btaoil.com</b> Date: <b>5/12/2014</b>	<b>OIL CONSERVATION DIVISION</b>  Approved By: <b>Paul Kautz</b> Title: <b>Geologist</b> Approved Date: <b>5/14/2014</b> Expiration Date: <b>5/14/2016</b> Conditions of Approval Attached
Phone: <b>432-682-3753</b>	

DISTRICT I  
1625 N. French Dr., Hobbs, NM 88240  
Phone: (575) 393-6161 Fax: (575) 393-0720

DISTRICT II  
811 S. First St., Artesia, NM 88210  
Phone: (575) 748-1283 Fax: (575) 748-9720

DISTRICT III  
1000 Rio Brazos Road, Aztec, NM 87410  
Phone: (505) 334-6178 Fax: (505) 334-6170

DISTRICT IV  
1220 S. St. Francis Dr., Santa Fe, NM 87505  
Phone: (505) 476-3460 Fax: (505) 476-3462

State of New Mexico  
Energy, Minerals & Natural Resources Department  
OIL CONSERVATION DIVISION  
1220 South St. Francis Dr.  
Santa Fe, New Mexico 87505

Form C-102  
Revised August 1, 2011  
Submit one copy to appropriate  
District Office

☐ AMENDED REPORT

WELL LOCATION AND ACREAGE DEDICATION PLAT

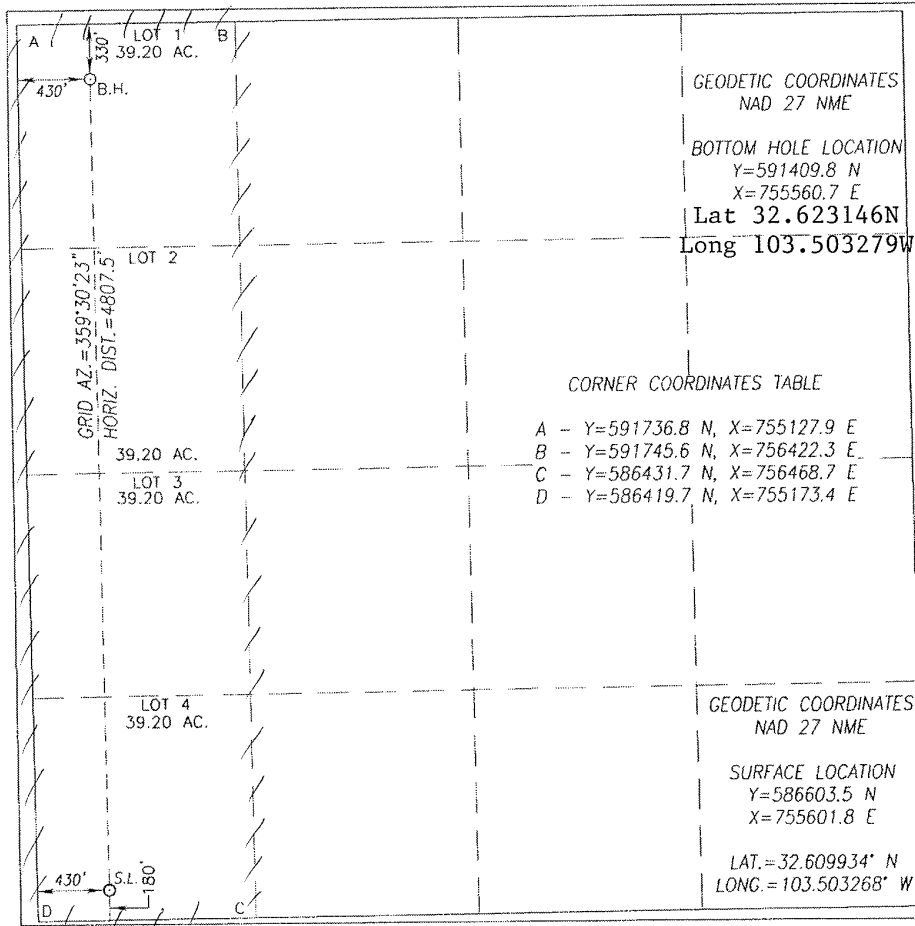
API Number <b>30-025-</b>	Pool Code <b>96403</b>	Pool Name <b>Wildcat; Bone Spring</b>
Property Code <b>305313</b>	Property Name <b>6922 LTD PEARL</b>	Well Number <b>3H</b>
OGRID No. <b>260297</b>	Operator Name <b>BTA OIL PRODUCERS, LLC</b>	Elevation <b>3702'</b>

UL or lot No.	Section	Township	Range	Lot Idn	Feet from the	North/South line	Feet from the	East/West line	County
4	31	19-S	35-E		180	SOUTH	430	WEST	LEA

Bottom Hole Location If Different From Surface

UL or lot No.	Section	Township	Range	Lot Idn	Feet from the	North/South line	Feet from the	East/West line	County
1	31	19-S	35-E		330	NORTH	430	WEST	LEA
Dedicated Acres <b>160</b>	Joint or Infill	Consolidation Code	Order No.						

NO ALLOWABLE WILL BE ASSIGNED TO THIS COMPLETION UNTIL ALL INTERESTS HAVE BEEN CONSOLIDATED OR A NON-STANDARD UNIT HAS BEEN APPROVED BY THE DIVISION



OPERATOR CERTIFICATION

I hereby certify that the information herein is true and complete to the best of my knowledge and belief, and that this organization either owns a working interest or unleased mineral interest in the land including the proposed bottom hole location or has a right to drill this well at this location pursuant to a contract with an owner of such mineral or working interest, or to a voluntary pooling agreement or a compulsory pooling order heretofore entered by the division.

*Pam Inskeep* 05/09/2014  
Signature Date  
Pam Inskeep, Regulatory Administrator  
Printed Name  
pinskeep@btaoil.com  
E-mail Address

SURVEYOR CERTIFICATION

I hereby certify that the well location shown on this plat was plotted from field notes of actual surveys made by me or under my supervision, and that the same is true and correct to the best of my belief.

APRIL 16, 2014

Date of Survey  
Signature & Seal of Professional Surveyor:

*Ronald J. Eidson* 05/08/2014  
Certificate Number 12641  
Gary O. Eidson  
Ronald J. Eidson 3239  
ACK JWSC W.O. 14 11 0382

**District I**  
1625 N. French Dr., Hobbs, NM 88240  
Phone:(575) 393-8181 Fax:(575) 393-0720  
**District II**  
811 S. First St., Artesia, NM 88210  
Phone:(575) 748-1283 Fax:(575) 748-9720  
**District III**  
1000 Rio Brazos Rd., Aztec, NM 87410  
Phone:(505) 334-8178 Fax:(505) 334-8170  
**District IV**  
1220 S. St Francis Dr., Santa Fe, NM 87505  
Phone:(505) 476-3470 Fax:(505) 476-3462

**State of New Mexico**  
**Energy, Minerals and Natural Resources**  
**Oil Conservation Division**  
**1220 S. St Francis Dr.**  
**Santa Fe, NM 87505**

Form APD Comments

Permit 188015

**PERMIT COMMENTS**

Operator Name and Address: BTA OIL PRODUCERS, LLC [260297] 104 S. Pecos Midland, TX 79701		API Number: 30-025-41846
		Well: PEARL 692 LTD #003H
Created By	Comment	Comment Date
pkautz	Land s/S	5/14/2014

**District I**

1625 N. French Dr., Hobbs, NM 88240  
Phone:(575) 393-6161 Fax:(575) 393-0720

**District II**

811 S. First St., Artesia, NM 88210  
Phone:(575) 748-1283 Fax:(575) 748-9720

**District III**

1000 Rio Brazos Rd., Aztec, NM 87410  
Phone:(505) 334-6178 Fax:(505) 334-6170

**District IV**

1220 S. St Francis Dr., Santa Fe, NM 87505  
Phone:(505) 476-3470 Fax:(505) 476-3462

Form APD Conditions

Permit 186015

**State of New Mexico**  
**Energy, Minerals and Natural Resources**  
**Oil Conservation Division**  
**1220 S. St Francis Dr.**  
**Santa Fe, NM 87505**

**PERMIT CONDITIONS OF APPROVAL**

Operator Name and Address: BTA OIL PRODUCERS, LLC [260297] 104 S. Pecos Midland, TX 79701	API Number: 30-025-41846
	Well: PEARL 692 LTD #003H

OCD Reviewer	Condition
pkautz	Will require a directional survey with the C-104
pkautz	Once the well is spud, to prevent ground water contamination through whole or partial conduits from the surface, the operator shall drill without interruption through the fresh water zone or zones and shall immediately set in cement the water protection string
pkautz	If using a pit for drilling and completion operations, must have an approved pit from prior to spudding the well.
pkautz	1) SURFACE & INTERMEDIATE CASING - Cement must circulate to surface -- 2) PRODUCTION CASING - Cement must tie back into intermediate casing --
pkautz	Surface casing must be set 25' below top of Rustler Anhydrite in order to seal off protectable water