

District I
1625 N. French Dr., Hobbs, NM 88240
Phone:(575) 393-8181 Fax:(575) 393-0720

District II
811 S. First St., Artesia, NM 88210
Phone:(575) 748-1283 Fax:(575) 748-9720

District III
1000 Rio Brazos Rd., Aztec, NM 87410
Phone:(505) 334-6178 Fax:(505) 334-6170

District IV
1220 S. St Francis Dr., Santa Fe, NM 87505
Phone:(505) 476-3470 Fax:(505) 476-3462

State of New Mexico
Energy, Minerals and Natural Resources
Oil Conservation Division
1220 S. St Francis Dr.
Santa Fe, NM 87505

Form C-101
August 1, 2011
Permit 188645

APPLICATION FOR PERMIT TO DRILL, RE-ENTER, DEEPEN, PLUGBACK, OR ADD A ZONE

1. Operator Name and Address APACHE CORP 303 Veterans Airpark Lane Midland, TX 79705		2. OGRID Number 873
4. Property Code 39779		3. API Number 30-025-41866
5. Property Name PINOT		6. Well No. 004

7. Surface Location

UL - Lot	C	Section	2	Township	20S	Range	38E	Lot Idn		Feet From	990	N/S Line	N	Feet From	1700	E/W Line	W	County	Lea
----------	---	---------	---	----------	-----	-------	-----	---------	--	-----------	-----	----------	---	-----------	------	----------	---	--------	-----

8. Proposed Bottom Hole Location

UL - Lot	C	Section	2	Township	20S	Range	38E	Lot Idn	C	Feet From	990	N/S Line	N	Feet From	1700	E/W Line	W	County	Lea
----------	---	---------	---	----------	-----	-------	-----	---------	---	-----------	-----	----------	---	-----------	------	----------	---	--------	-----

9. Pool Information

HOUSE;BLINEBRY	33230
HOUSE;TUBB	78760
HOUSE;DRINKARD	33250
HOUSE;ABO	33210

Additional Well Information

11. Work Type New Well	12. Well Type OIL	13. Cable/Rotary	14. Lease Type Private	15. Ground Level Elevation 3574
16. Multiple Y	17. Proposed Depth 8000	18. Formation Abo	19. Contractor	20. Spud Date
Depth to Ground water		Distance from nearest fresh water well		Distance to nearest surface water

☒ We will be using a closed-loop system in lieu of lined pits

21. Proposed Casing and Cement Program

Type	Hole Size	Casing Size	Casing Weight/ft	Setting Depth	Sacks of Cement	Estimated TOC
Surf	11	8.625	24	1620	535	0
Prod	7.875	5.5	17	8000	1050	0

Casing/Cement Program: Additional Comments

--

22. Proposed Blowout Prevention Program

Type	Working Pressure	Test Pressure	Manufacturer
Hydril	3000	2000	

23. I hereby certify that the information given above is true and complete to the best of my knowledge and belief. I further certify I have complied with 19.15.14.9 (A) NMAC <input checked="" type="checkbox"/> and/or 19.15.14.9 (B) NMAC <input checked="" type="checkbox"/> , if applicable. Signature:	OIL CONSERVATION DIVISION
Printed Name: Electronically filed by Bobby Smith	Approved By: Paul Kautz
Title:	Title: Geologist
Email Address: bobby.smith@apachecorp.com	Approved Date: 5/28/2014 Expiration Date: 5/28/2016
Date: 5/22/2014 Phone: 432-818-1020	Conditions of Approval Attached

DISTRICT I
1625 N. French Dr., Hobbs, NM 88240
Phone: (505) 393-6161 Fax: (505) 393-0720
DISTRICT II
611 S. First St., Artesia, NM 88210
Phone: (505) 748-1263 Fax: (505) 748-9720
DISTRICT III
1000 Rio Brazos Road, Aztec, NM 87410
Phone: (505) 334-6178 Fax: (505) 334-6170
DISTRICT IV
1220 S. St. Francis Dr., Santa Fe, NM 87505
Phone: (505) 476-3460 Fax: (505) 476-3462

State of New Mexico
Energy, Minerals & Natural Resources Department
OIL CONSERVATION DIVISION
1220 South St. Francis Dr.
Santa Fe, New Mexico 87505

Form C-102
Revised August 1, 2011
Submit one copy to appropriate
District Office

AMENDED REPORT

WELL LOCATION AND ACREAGE DEDICATION PLAT

API Number 30-025-	Pool Code 33230 78760	House; Blumebry	House; Tubb	Pool Name House; Drinkard	House; ABO
Property Code 39779	Property Name PINOT				Well Number 4
OGRID No. 873	Operator Name APACHE CORPORATION				Elevation 3574'

Surface Location

UL or lot No.	Section	Township	Range	Lot Idn	Feet from the	North/South line	Feet from the	East/West line	County
3	2	20-S	38-E		990	NORTH	1700	WEST	LEA

Bottom Hole Location If Different From Surface

UL or lot No.	Section	Township	Range	Lot Idn	Feet from the	North/South line	Feet from the	East/West line	County
Dedicated Acres 39.77	Joint or Infill	Consolidation Code	Order No.						

NO ALLOWABLE WILL BE ASSIGNED TO THIS COMPLETION UNTIL ALL INTERESTS HAVE BEEN CONSOLIDATED OR A NON-STANDARD UNIT HAS BEEN APPROVED BY THE DIVISION

LOT 4 39.73 AC.	LOT 3 39.77 AC.	LOT 2 39.79 AC.	LOT 1 39.83 AC.
<p>GEODETIC COORDINATES NAD 27 NME</p> <p>SURFACE LOCATION Y=586519.6 N X=873069.4 E</p>			
<p>LAT.=32.606604° N LONG.=103.121857° W</p> <p>LAT.=32° 36' 24" N LONG.=103° 07' 19" W</p> <p>GEODETIC COORDINATES NAD 83 NME</p> <p>SURFACE LOCATION Y=586578.7 N X=914251.2 E</p> <p>LAT.=32.606718° N LONG.=103.122335° W</p> <p>LAT.=32° 36' 24" N LONG.=103° 07' 20" W</p>			

OPERATOR CERTIFICATION

I hereby certify that the information herein is true and complete to the best of my knowledge and belief, and that this organization either owns a working interest or unleased mineral interest in the land including the proposed bottom hole location or has a right to drill this well at this location pursuant to a contract with an owner of such mineral or working interest, or to a voluntary pooling agreement or a compulsory pooling order heretofore entered by the division.

Signature: Michelle Cooper Date: 5-22-14

Printed Name: Michelle Cooper

E-mail Address: michelle.cooper@apachecorp.com

SURVEYOR CERTIFICATION

I hereby certify that the well location shown on this plat was plotted from field notes of actual surveys made by me or under my supervision, and that the same is true and correct to the best of my belief.

APRIL 18, 2014

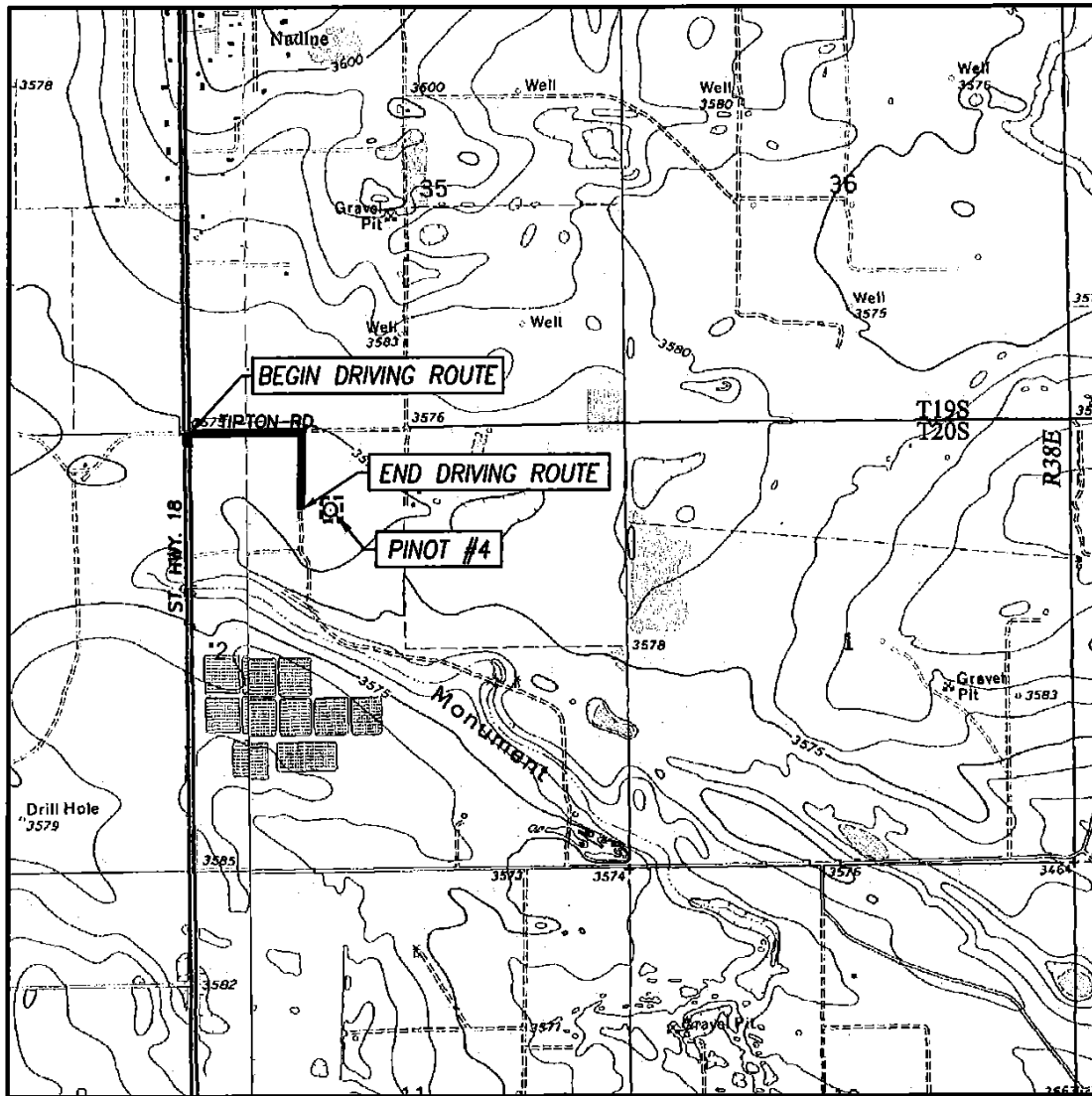
Date of Survey

Signature & Seal of Professional Surveyor:

Ronald J. Eidson
Certificate Number: 3239
Date: 4/16/2014

ACK JWSC W.O.: 14.11.0396

LOCATION VERIFICATION MAP



SCALE: 1" = 2000'

CONTOUR INTERVAL:
HOBBS SE, N.M. - 10'
HOBBS SW, N.M. - 10'

SEC. 2 TWP. 20-S RGE. 38-E

SURVEY N.M.P.M.

COUNTY LEA STATE NEW MEXICO

DESCRIPTION 990' FNL & 1700' FWL

ELEVATION 3574'

OPERATOR APACHE CORPORATION

LEASE PINOT

U.S.G.S. TOPOGRAPHIC MAP
HOBBS SE, N.M.

DIRECTIONS TO PINOT #4:

FROM THE INTERSECTION OF ST. HIGHWAY 18 AND TIPTON ROAD, GO EAST ON TIPTON ROAD FOR APPROX. 0.3 MILES. TURN RIGHT AND GO SOUTH AT LEASE ROAD APPROX. 0.1 MILE TO EXISTING BATTERY. THE LOCATION IS EAST APPROX. 300 FEET.

PROVIDING SURVEYING SERVICES
SINCE 1946

JOHN WEST SURVEYING COMPANY

412 N. DAL PASO HOBBS, N.M. 88240
(575) 393-3117 www.jwsc.biz
TBPLS# 10021000

DISTRICT I
1625 N. French Dr., Hobbs, NM 88240
Phone: (505) 393-6161 Fax: (505) 393-0720
DISTRICT II
611 S. First St., Artesia, NM 88210
Phone: (505) 748-1263 Fax: (505) 748-9720
DISTRICT III
1000 Rio Brazos Road, Aztec, NM 87410
Phone: (505) 334-6178 Fax: (505) 334-6170
DISTRICT IV
1220 S. St. Francis Dr., Santa Fe, NM 87505
Phone: (505) 476-3460 Fax: (505) 476-3462

State of New Mexico
Energy, Minerals & Natural Resources Department
OIL CONSERVATION DIVISION
1220 South St. Francis Dr.
Santa Fe, New Mexico 87505

Form C-102
Revised August 1, 2011
Submit one copy to appropriate
District Office

AMENDED REPORT

WELL LOCATION AND ACREAGE DEDICATION PLAT

API Number 30-025-	Pool Code 33230 78760	House; Blinney, 33250 33210	House; Tubb House; Drinkard	Well Number 4
Property Code 39779	Operator Name PINOT			Elevation 3574'
OGRID No. 873	Operator Name APACHE CORPORATION			

Surface Location

UL or lot No.	Section	Township	Range	Lot Idn	Feet from the	North/South line	Feet from the	East/West line	County
3	2	20-S	38-E		990	NORTH	1700	WEST	LEA

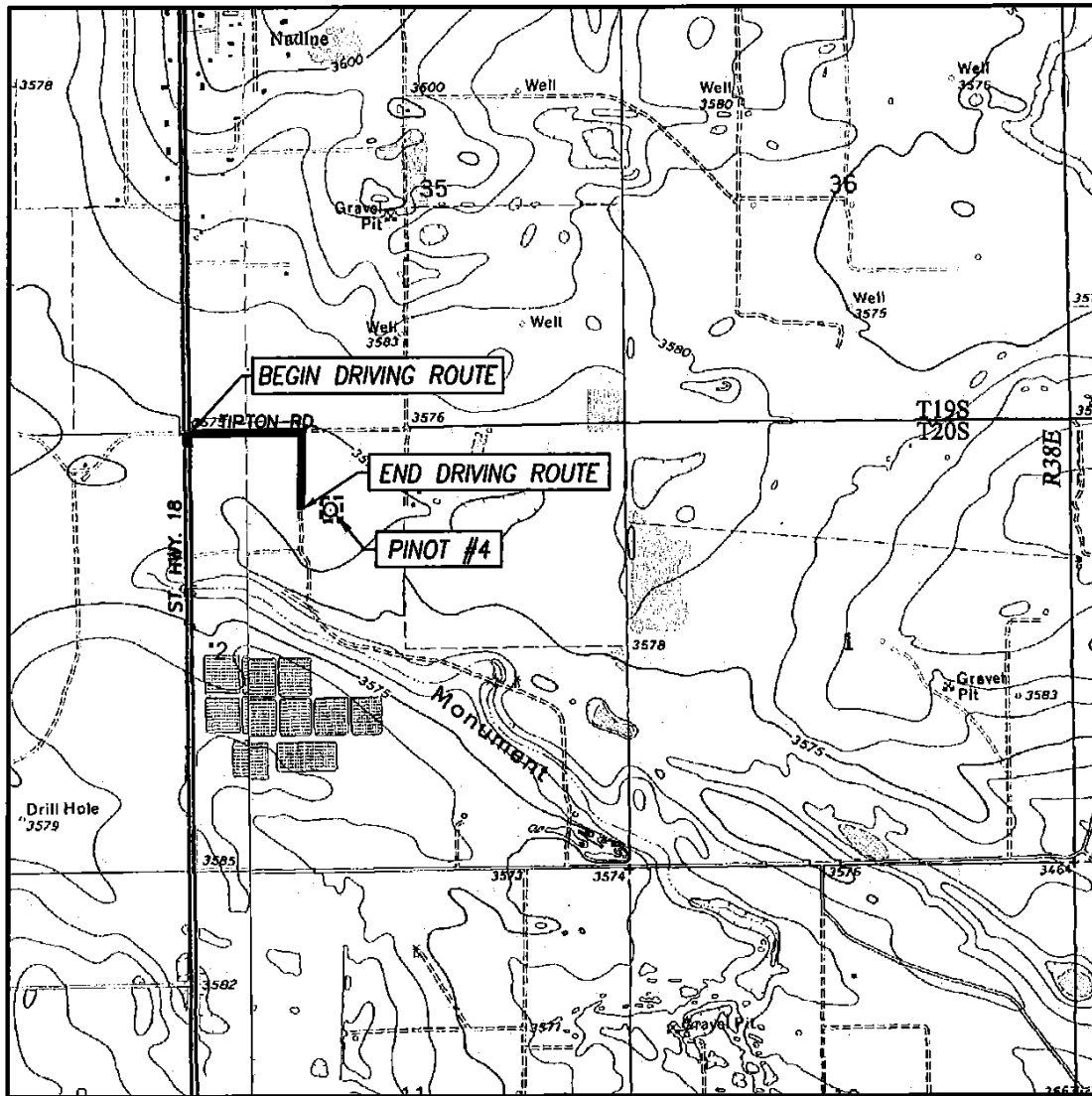
Bottom Hole Location If Different From Surface

UL or lot No.	Section	Township	Range	Lot Idn	Feet from the	North/South line	Feet from the	East/West line	County
Dedicated Acres 39.77	Joint or Infill	Consolidation Code	Order No.						

NO ALLOWABLE WILL BE ASSIGNED TO THIS COMPLETION UNTIL ALL INTERESTS HAVE BEEN CONSOLIDATED OR A NON-STANDARD UNIT HAS BEEN APPROVED BY THE DIVISION

LOT 4 39.73 AC.	LOT 3 39.77 AC.	LOT 2 39.79 AC.	LOT 1 39.83 AC.
<p>1700'</p> <p>990'</p>			
<p>GEODETIC COORDINATES NAD 27 NME</p> <p>SURFACE LOCATION Y=586519.6 N X=873069.4 E</p> <p>LAT.=32.606604° N LONG.=103.121857° W</p> <p>LAT.=32° 36' 24" N LONG.=103° 07' 19" W</p> <p>GEODETIC COORDINATES NAD 83 NME</p> <p>SURFACE LOCATION Y=586518.7 N X=914251.2 E</p> <p>LAT.=32.606718° N LONG.=103.122335° W</p> <p>LAT.=32° 36' 24" N LONG.=103° 07' 20" W</p>			
<p>OPERATOR CERTIFICATION</p> <p>I hereby certify that the information herein is true and complete to the best of my knowledge and belief, and that this organization either owns a working interest or unleased mineral interest in the land including the proposed bottom hole location or has a right to drill this well at this location pursuant to a contract with an owner of such mineral or working interest, or to a voluntary pooling agreement or a compulsory pooling order heretofore entered by the division.</p> <p><i>Michelle Cooper</i> 5-22-14 Signature Date <i>Michelle Cooper</i> Printed Name <i>michelle.cooper@apachecorp.com</i> E-mail Address</p> <p>SURVEYOR CERTIFICATION</p> <p>I hereby certify that the well location shown on this plat was plotted from field notes of actual surveys made by me or under my supervision, and that the same is true and correct to the best of my belief.</p> <p>APRIL 18, 2014 Date of Survey</p> <p><i>Ronald J. Eidson</i> Signature of Professional Surveyor: 3239 Certificate Number 12641 3239 ACK JWSC W.O.: 14.11.0396</p>			

LOCATION VERIFICATION MAP



SCALE: 1" = 2000'

CONTOUR INTERVAL:
HOBBS SE, N.M. - 10'
HOBBS SW, N.M. - 10'

SEC. 2 TWP. 20-S RGE. 38-E

SURVEY N.M.P.M.

COUNTY LEA STATE NEW MEXICO

DESCRIPTION 990' FNL & 1700' FWL

ELEVATION 3574'


OPERATOR APACHE CORPORATION

LEASE PINOT

U.S.G.S. TOPOGRAPHIC MAP
HOBBS SE, N.M.

DIRECTIONS TO PINOT #4:

FROM THE INTERSECTION OF ST. HIGHWAY 18 AND TIPTON ROAD, GO EAST ON TIPTON ROAD FOR APPROX. 0.3 MILES. TURN RIGHT AND GO SOUTH AT LEASE ROAD APPROX. 0.1 MILE TO EXISTING BATTERY. THE LOCATION IS EAST APPROX. 300 FEET.



PROVIDING SURVEYING SERVICES
SINCE 1946

JOHN WEST SURVEYING COMPANY

412 N. DAL PASO HOBBS, N.M. 88240
(575) 393-3117 www.jwsc.biz
TBPLS# 10021000

DISTRICT I
1625 N. French Dr., Hobbs, NM 88240
Phone: (505) 393-6161 Fax: (505) 393-0720
DISTRICT II
611 S. First St., Artesia, NM 88210
Phone: (505) 748-1263 Fax: (505) 748-9720
DISTRICT III
1000 Rio Brazos Road, Aztec, NM 87410
Phone: (505) 334-6178 Fax: (505) 334-6170
DISTRICT IV
1220 S. St. Francis Dr., Santa Fe, NM 87505
Phone: (505) 476-3460 Fax: (505) 476-3462

State of New Mexico
Energy, Minerals & Natural Resources Department
OIL CONSERVATION DIVISION
1220 South St. Francis Dr.
Santa Fe, New Mexico 87505

Form C-102
Revised August 1, 2011
Submit one copy to appropriate
District Office

AMENDED REPORT

WELL LOCATION AND ACREAGE DEDICATION PLAT

API Number 30-025-	Pool Code 33230 78760	House; Blinney, 33250 33210	House; Tubb House; Drinkard	Well Number 4
Property Code 39779	Operator Name PINOT			Elevation 3574'
OGRID No. 873	Operator Name APACHE CORPORATION			

Surface Location

UL or lot No.	Section	Township	Range	Lot Idn	Feet from the	North/South line	Feet from the	East/West line	County
3	2	20-S	38-E		990	NORTH	1700	WEST	LEA

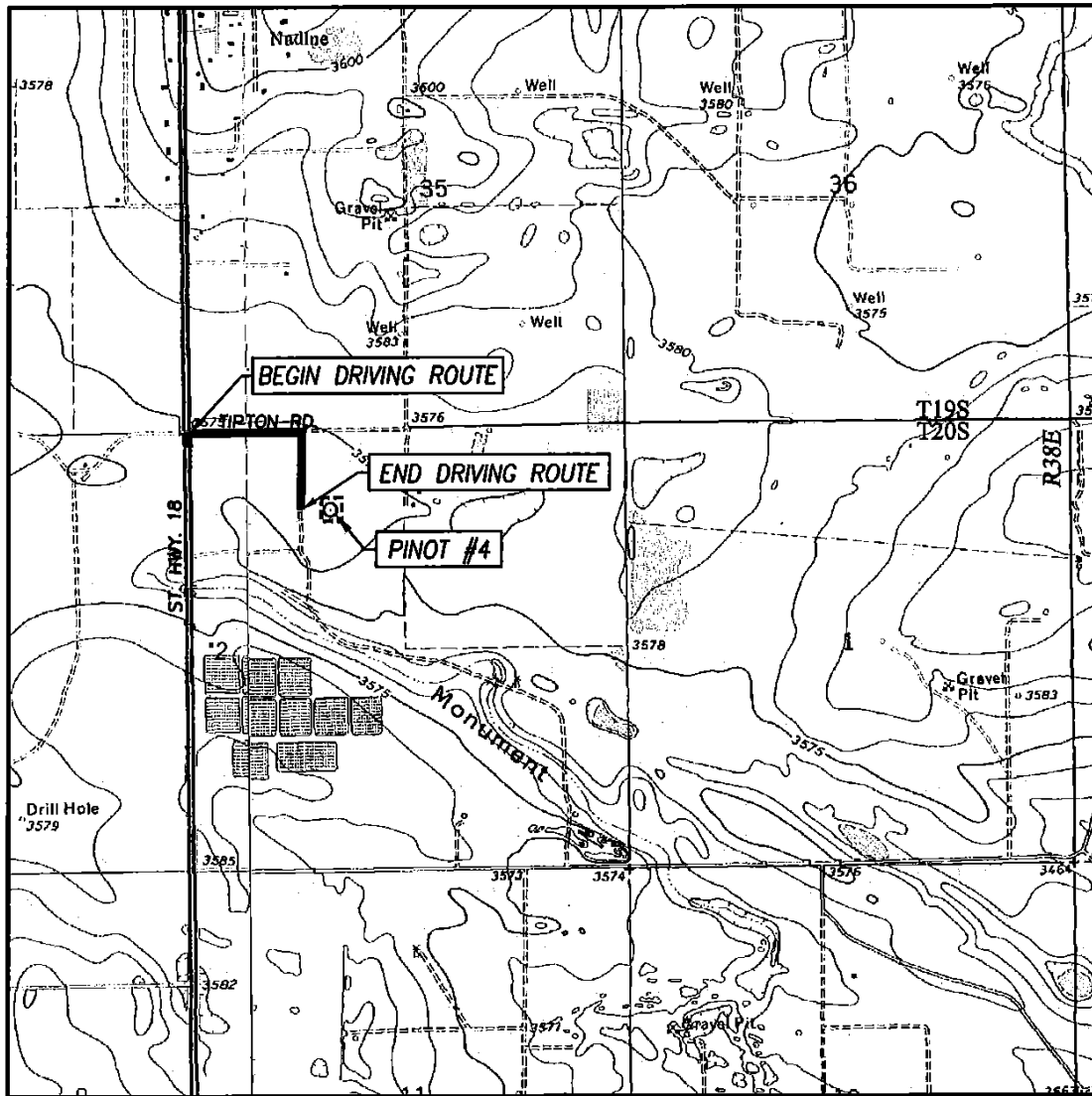
Bottom Hole Location If Different From Surface

UL or lot No.	Section	Township	Range	Lot Idn	Feet from the	North/South line	Feet from the	East/West line	County
Dedicated Acres 39.77	Joint or Infill	Consolidation Code	Order No.						

NO ALLOWABLE WILL BE ASSIGNED TO THIS COMPLETION UNTIL ALL INTERESTS HAVE BEEN CONSOLIDATED OR A NON-STANDARD UNIT HAS BEEN APPROVED BY THE DIVISION

LOT 4 39.73 AC.	LOT 3 39.77 AC.	LOT 2 39.79 AC.	LOT 1 39.83 AC.
<p>1700'</p> <p>990'</p>			
<p>GEODETIC COORDINATES NAD 27 NME</p> <p>SURFACE LOCATION Y=586519.6 N X=873069.4 E</p> <p>LAT.=32.606604° N LONG.=103.121857° W</p> <p>LAT.=32° 36' 24" N LONG.=103° 07' 19" W</p> <p>GEODETIC COORDINATES NAD 83 NME</p> <p>SURFACE LOCATION Y=586518.7 N X=914251.2 E</p> <p>LAT.=32.606718° N LONG.=103.122335° W</p> <p>LAT.=32° 36' 24" N LONG.=103° 07' 20" W</p>			
<p>OPERATOR CERTIFICATION</p> <p>I hereby certify that the information herein is true and complete to the best of my knowledge and belief, and that this organization either owns a working interest or unleased mineral interest in the land including the proposed bottom hole location or has a right to drill this well at this location pursuant to a contract with an owner of such mineral or working interest, or to a voluntary pooling agreement or a compulsory pooling order heretofore entered by the division.</p> <p><i>Michelle Cooper</i> 5-22-14 Signature Date <i>Michelle Cooper</i> Printed Name <i>michelle.cooper@apachecorp.com</i> E-mail Address</p> <p>SURVEYOR CERTIFICATION</p> <p>I hereby certify that the well location shown on this plat was plotted from field notes of actual surveys made by me or under my supervision, and that the same is true and correct to the best of my belief.</p> <p>APRIL 18, 2014 Date of Survey</p> <p><i>Ronald J. Eidson</i> Signature of Professional Surveyor: 3239 Certificate Number 12641 3239 ACK JWSC W.O.: 14.11.0396</p>			

LOCATION VERIFICATION MAP



SCALE: 1" = 2000'

CONTOUR INTERVAL:
HOBBS SE, N.M. - 10'
HOBBS SW, N.M. - 10'

SEC. 2 TWP. 20-S RGE. 38-E

SURVEY N.M.P.M.

COUNTY LEA STATE NEW MEXICO

DESCRIPTION 990' FNL & 1700' FWL

ELEVATION 3574'


OPERATOR APACHE CORPORATION

LEASE PINOT

U.S.G.S. TOPOGRAPHIC MAP
HOBBS SE, N.M.

DIRECTIONS TO PINOT #4:

FROM THE INTERSECTION OF ST. HIGHWAY 18 AND TIPTON ROAD, GO EAST ON TIPTON ROAD FOR APPROX. 0.3 MILES. TURN RIGHT AND GO SOUTH AT LEASE ROAD APPROX. 0.1 MILE TO EXISTING BATTERY. THE LOCATION IS EAST APPROX. 300 FEET.



PROVIDING SURVEYING SERVICES
SINCE 1946

JOHN WEST SURVEYING COMPANY

412 N. DAL PASO HOBBS, N.M. 88240
(575) 393-3117 www.jwsc.biz
TBPLS# 10021000

DISTRICT I
1625 N. French Dr., Hobbs, NM 88240
Phone: (505) 393-6161 Fax: (505) 393-0720
DISTRICT II
611 S. First St., Artesia, NM 88210
Phone: (505) 748-1263 Fax: (505) 748-9720
DISTRICT III
1000 Rio Brazos Road, Aztec, NM 87410
Phone: (505) 334-6178 Fax: (505) 334-6170
DISTRICT IV
1220 S. St. Francis Dr., Santa Fe, NM 87505
Phone: (505) 476-3460 Fax: (505) 476-3462

State of New Mexico
Energy, Minerals & Natural Resources Department
OIL CONSERVATION DIVISION
1220 South St. Francis Dr.
Santa Fe, New Mexico 87505

Form C-102
Revised August 1, 2011
Submit one copy to appropriate
District Office

AMENDED REPORT

WELL LOCATION AND ACREAGE DEDICATION PLAT

API Number 30-025-	Pool Code 33230 78760	House; Blinney, 33250 33210	House; Tubb House; Drinkard	Well Number 4
Property Code 39779	Operator Name PINOT			Elevation 3574'
OGRID No. 873	Operator Name APACHE CORPORATION			

Surface Location

UL or lot No.	Section	Township	Range	Lot Idn	Feet from the	North/South line	Feet from the	East/West line	County
3	2	20-S	38-E		990	NORTH	1700	WEST	LEA

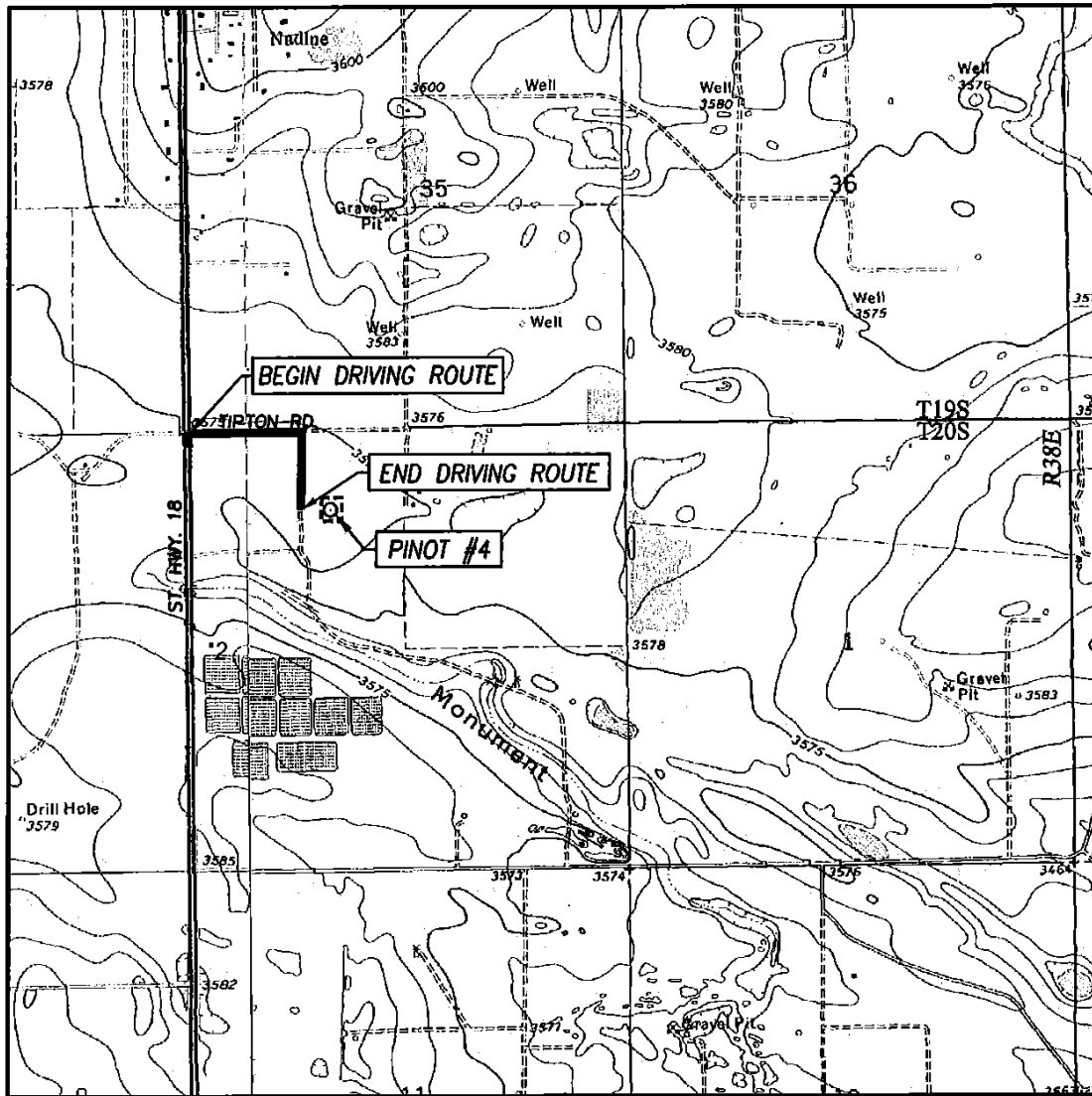
Bottom Hole Location If Different From Surface

UL or lot No.	Section	Township	Range	Lot Idn	Feet from the	North/South line	Feet from the	East/West line	County
Dedicated Acres 39.77	Joint or Infill	Consolidation Code	Order No.						

NO ALLOWABLE WILL BE ASSIGNED TO THIS COMPLETION UNTIL ALL INTERESTS HAVE BEEN CONSOLIDATED OR A NON-STANDARD UNIT HAS BEEN APPROVED BY THE DIVISION

LOT 4 39.73 AC.	LOT 3 39.77 AC.	LOT 2 39.79 AC.	LOT 1 39.83 AC.
<p>1700'</p> <p>990'</p>			
<p>GEODETIC COORDINATES NAD 27 NME</p> <p>SURFACE LOCATION Y=586519.6 N X=873069.4 E</p> <p>LAT.=32.606604° N LONG.=103.121857° W</p> <p>LAT.=32° 36' 24" N LONG.=103° 07' 19" W</p> <p>GEODETIC COORDINATES NAD 83 NME</p> <p>SURFACE LOCATION Y=586518.7 N X=914251.2 E</p> <p>LAT.=32.606718° N LONG.=103.122335° W</p> <p>LAT.=32° 36' 24" N LONG.=103° 07' 20" W</p>			
<p>OPERATOR CERTIFICATION</p> <p>I hereby certify that the information herein is true and complete to the best of my knowledge and belief, and that this organization either owns a working interest or unleased mineral interest in the land including the proposed bottom hole location or has a right to drill this well at this location pursuant to a contract with an owner of such mineral or working interest, or to a voluntary pooling agreement or a compulsory pooling order heretofore entered by the division.</p> <p><i>Michelle Cooper</i> 5-22-14 Signature Date <i>Michelle Cooper</i> Printed Name <i>michelle.cooper@apachecorp.com</i> E-mail Address</p> <p>SURVEYOR CERTIFICATION</p> <p>I hereby certify that the well location shown on this plat was plotted from field notes of actual surveys made by me or under my supervision, and that the same is true and correct to the best of my belief.</p> <p>APRIL 18, 2014 Date of Survey</p> <p><i>Ronald J. Eidson</i> Signature of Professional Surveyor: 3239 Certificate Number 12641 3239 ACK JWSC W.O.: 14.11.0396</p>			

LOCATION VERIFICATION MAP



SCALE: 1" = 2000'

CONTOUR INTERVAL:
HOBBS SE, N.M. - 10'
HOBBS SW, N.M. - 10'

SEC. 2 TWP. 20-S RGE. 38-E

SURVEY N.M.P.M.

COUNTY LEA STATE NEW MEXICO

DESCRIPTION 990' FNL & 1700' FWL

ELEVATION 3574'

OPERATOR APACHE CORPORATION

LEASE PINOT

U.S.G.S. TOPOGRAPHIC MAP
HOBBS SE, N.M.

DIRECTIONS TO PINOT #4:

FROM THE INTERSECTION OF ST. HIGHWAY 18 AND TIPTON ROAD, GO EAST ON TIPTON ROAD FOR APPROX. 0.3 MILES. TURN RIGHT AND GO SOUTH AT LEASE ROAD APPROX. 0.1 MILE TO EXISTING BATTERY. THE LOCATION IS EAST APPROX. 300 FEET.

PROVIDING SURVEYING SERVICES
SINCE 1946

JOHN WEST SURVEYING COMPANY

412 N. DAL PASO HOBBS, N.M. 88240
(575) 393-3117 www.jwsc.biz
TBPLS# 10021000

District I
1625 N. French Dr., Hobbs, NM 88240
Phone:(575) 393-8181 Fax:(575) 393-0720
District II
811 S. First St., Artesia, NM 88210
Phone:(575) 748-1283 Fax:(575) 748-9720
District III
1000 Rio Brazos Rd., Aztec, NM 87410
Phone:(505) 334-8178 Fax:(505) 334-8170
District IV
1220 S. St Francis Dr., Santa Fe, NM 87505
Phone:(505) 476-3470 Fax:(505) 476-3462

State of New Mexico
Energy, Minerals and Natural Resources
Oil Conservation Division
1220 S. St Francis Dr.
Santa Fe, NM 87505

Form APD Comments

Permit 188645

PERMIT COMMENTS

Operator Name and Address: APACHE CORP [873] 303 Veterans Airpark Lane Midland, TX 79705		API Number: 30-025-41866
		Well: PINOT #004

Created By	Comment	Comment Date
------------	---------	--------------

District I

1625 N. French Dr., Hobbs, NM 88240
Phone:(575) 393-8161 Fax:(575) 393-0720

District II

811 S. First St., Artesia, NM 88210
Phone:(575) 748-1283 Fax:(575) 748-9720

District III

1000 Rio Brazos Rd., Aztec, NM 87410
Phone:(505) 334-6178 Fax:(505) 334-6170

District IV

1220 S. St Francis Dr., Santa Fe, NM 87505
Phone:(505) 476-3470 Fax:(505) 476-3462

Form APD Conditions

Permit 188645

State of New Mexico
Energy, Minerals and Natural Resources
Oil Conservation Division
1220 S. St Francis Dr.
Santa Fe, NM 87505

PERMIT CONDITIONS OF APPROVAL

Operator Name and Address: APACHE CORP [873] 303 Veterans Airpark Lane Midland, TX 79705	API Number: 30-025-41866
	Well: PINOT #004

OCD Reviewer	Condition
pkautz	Once the well is spud, to prevent ground water contamination through whole or partial conduits from the surface, the operator shall drill without interruption through the fresh water zone or zones and shall immediately set in cement the water protection string
pkautz	If using a pit for drilling and completion operations, must have an approved pit from prior to spudding the well.
pkautz	SURFACE & PRODUCTION CASING - Cement must circulate to surface
pkautz	Surface casing must be set 25' below top of Rustler Anhydrite in order to seal off protectable water
pkautz	Will require form C-103 per R-11363 preapproved pools(House;Blinbry, House;Tubb and House;Drinkard) for Downhole commingling before these zones can be produced by commingling in the wellbore in accordance with the Rule 19.15.12.11. Will require form C-107A submitted to Santa Fe when downhole comingling House;Abo with other pools