

District I
1625 N. French Dr., Hobbs, NM 88240
Phone:(575) 393-8161 Fax:(575) 393-0720
District II
811 S. First St., Artesia, NM 88210
Phone:(575) 748-1283 Fax:(575) 748-9720
District III
1000 Rio Brazos Rd., Aztec, NM 87410
Phone:(505) 334-6178 Fax:(505) 334-6170
District IV
1220 S. St Francis Dr., Santa Fe, NM 87505
Phone:(505) 476-3470 Fax:(505) 476-3462

State of New Mexico
Energy, Minerals and Natural Resources
Oil Conservation Division
1220 S. St Francis Dr.
Santa Fe, NM 87505

Form C-101
August 1, 2011
Permit 187046

APPLICATION FOR PERMIT TO DRILL, RE-ENTER, DEEPEN, PLUGBACK, OR ADD A ZONE

1. Operator Name and Address APACHE CORP 303 Veterans Airpark Lane Midland, TX 79705		2. OGRID Number 873
4. Property Code 303228		3. API Number 30-025-41887
5. Property Name REDTAG		6. Well No. 007

7. Surface Location

UL - Lot	J	Section	2	Township	20S	Range	38E	Lot Idn		Feet From	2310	N/S Line	S	Feet From	1650	E/W Line	E	County	Lea
----------	---	---------	---	----------	-----	-------	-----	---------	--	-----------	------	----------	---	-----------	------	----------	---	--------	-----

8. Proposed Bottom Hole Location

UL - Lot	J	Section	2	Township	20S	Range	38E	Lot Idn	J	Feet From	2310	N/S Line	S	Feet From	1650	E/W Line	E	County	Lea
----------	---	---------	---	----------	-----	-------	-----	---------	---	-----------	------	----------	---	-----------	------	----------	---	--------	-----

9. Pool Information

HOUSE;BLINEBRY	33230
HOUSE;TUBB	78760
HOUSE;DRINKARD	33250
HOUSE;ABO	33210

Additional Well Information

11. Work Type New Well	12. Well Type OIL	13. Cable/Rotary	14. Lease Type State	15. Ground Level Elevation 3568
16. Multiple Y	17. Proposed Depth 8000	18. Formation Abo	19. Contractor	20. Spud Date
Depth to Ground water		Distance from nearest fresh water well		Distance to nearest surface water

☒ We will be using a closed-loop system in lieu of lined pits

21. Proposed Casing and Cement Program

Type	Hole Size	Casing Size	Casing Weight/ft	Setting Depth	Sacks of Cement	Estimated TOC
Surf	11	8.625	24	1600	530	0
Prod	7.875	5.5	17	8000	1050	0

Casing/Cement Program: Additional Comments

--

22. Proposed Blowout Prevention Program

Type	Working Pressure	Test Pressure	Manufacturer
Hydril	3000	2000	

23. I hereby certify that the information given above is true and complete to the best of my knowledge and belief. I further certify I have complied with 19.15.14.9 (A) NMAC <input checked="" type="checkbox"/> and/or 19.15.14.9 (B) NMAC <input checked="" type="checkbox"/> , if applicable. Signature:	OIL CONSERVATION DIVISION
Printed Name: Electronically filed by Bobby Smith	Approved By: Paul Kautz
Title:	Title: Geologist
Email Address: bobby.smith@apachecorp.com	Approved Date: 6/3/2014 Expiration Date: 6/3/2016
Date: 6/3/2014 Phone: 432-818-1020	Conditions of Approval Attached

DISTRICT I
1625 N. French Dr., Hobbs, NM 88240
Phone: (575) 393-6161 Fax: (575) 393-0720

DISTRICT II
811 S. First St., Artesia, NM 88210
Phone: (575) 748-1283 Fax: (575) 748-9720

DISTRICT III
1000 Rio Brazos Road, Aztec, NM 87410
Phone: (505) 334-6178 Fax: (505) 334-6170

DISTRICT IV
1220 S. St. Francis Dr., Santa Fe, NM 87505
Phone: (505) 476-3460 Fax: (505) 476-3462

State of New Mexico
Energy, Minerals & Natural Resources Department
OIL CONSERVATION DIVISION
1220 South St. Francis Dr.
Santa Fe, New Mexico 87505

Form C-102
Revised August 1, 2011
Submit one copy to appropriate
District Office

☐ AMENDED REPORT

WELL LOCATION AND ACREAGE DEDICATION PLAT

API Number 30-025-	Pool Code 33230 78760	House Bluebry	House Tubb	Pool Name House Drinkard	House ABO
Property Code 303228	Property Name RED TAG			Well Number 7	
OGRID No. 873	Operator Name APACHE CORPORATION			Elevation 3568'	

Surface Location

UL or lot No.	Section	Township	Range	Lot Idn	Feet from the	North/South line	Feet from the	East/West line	County
J	2	20-S	38-E		2310	SOUTH	1650	EAST	LEA

Bottom Hole Location If Different From Surface

UL or lot No.	Section	Township	Range	Lot Idn	Feet from the	North/South line	Feet from the	East/West line	County
Dedicated Acres 40	Joint or Infill	Consolidation Code	Order No.						

NO ALLOWABLE WILL BE ASSIGNED TO THIS COMPLETION UNTIL ALL INTERESTS HAVE BEEN CONSOLIDATED OR A NON-STANDARD UNIT HAS BEEN APPROVED BY THE DIVISION

LOT 4	LOT 3	LOT 2	LOT 1
39.73 AC.	39.77 AC.	39.79 AC.	39.83 AC.
<p>GEODETIC COORDINATES NAD 27 NME</p> <p>SURFACE LOCATION Y=584563.0 N X=875020.1 E</p> <p>LAT.=32.601165° N LONG.=103.115597° W</p> <p>LAT.=32° 36' 04" N LONG.=103° 06' 56" W</p> <p>GEODETIC COORDINATES NAD 83 NME</p> <p>SURFACE LOCATION Y=584622.0 N X=916202.0 E</p> <p>LAT.=32.601280° N LONG.=103.116074° W</p> <p>LAT.=32° 36' 05" N LONG.=103° 06' 58" W</p>			

OPERATOR CERTIFICATION

I hereby certify that the information herein is true and complete to the best of my knowledge and belief, and that this organization either owns a working interest or unleased mineral interest in the land including the proposed bottom hole location or has a right to drill this well at this location pursuant to a contract with an owner of such mineral or working interest, or to a voluntary pooling agreement or a compulsory pooling order heretofore entered by the division.

Michelle Cooper 6-2-14
Signature Date

Michelle Cooper
Printed Name

michelle.cooper@apachecorp.com
E-mail Address

SURVEYOR CERTIFICATION

I hereby certify that the well location shown on this plat was plotted from field notes of actual surveys made by me or under my supervision, and that the same is true and correct to the best of my belief.

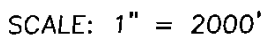
APRIL 30, 2014
Date of Survey

Ronald J. Eidson
Signature & Seal of Professional Surveyor

Certificate Number: 3239

ACK JWSC W.O.: 14.11.0398

NORTH



CONTOUR INTERVAL:
HOBBS SE, N.M. - 10'
HOBBS SW, N.M. - 10'

SURVEY N.M.P.M.

DESCRIPTION 2310' FSL & 1650' FEL

ELEVATION 3568'

LEASE _____ RED TAG _____

U.S.G.S. TOPOGRAPHIC MAP
HOBBS SE, N.M.

DIRECTIONS TO RED TAG #7:

FROM THE INTERSECTION OF ST. HIGHWAY 18 AND STARLIGHT ROAD,
GO EAST ON STARLIGHT ROAD FOR APPROX. 0.5 MILES. TURN LEFT
AND GO NORTH ON LEASE ROAD FOR APPROX. 0.4 MILES. THE
LOCATION STAKE IS EAST OF ROAD APPROX. 85 FEET.



PROVIDING SURVEYING SERVICES
SINCE 1946
JOHN WEST SURVEYING COMPANY
412 N. DAL PASO HOBBES, N.M. 88240
(575) 393-3117 www.jwsc.biz
TBPLS# 10021000

DISTRICT I
1625 N. French Dr., Hobbs, NM 88240
Phone: (575) 393-6161 Fax: (575) 393-0720

DISTRICT II
811 S. First St., Artesia, NM 88210
Phone: (575) 748-1283 Fax: (575) 748-9720

DISTRICT III
1000 Rio Brazos Road, Aztec, NM 87410
Phone: (505) 334-6178 Fax: (505) 334-6170

DISTRICT IV
1220 S. St. Francis Dr., Santa Fe, NM 87505
Phone: (505) 476-3460 Fax: (505) 476-3462

State of New Mexico
Energy, Minerals & Natural Resources Department
OIL CONSERVATION DIVISION
1220 South St. Francis Dr.
Santa Fe, New Mexico 87505

Form C-102
Revised August 1, 2011
Submit one copy to appropriate
District Office

☐ AMENDED REPORT

WELL LOCATION AND ACREAGE DEDICATION PLAT

API Number 30-025-	Pool Code 33230 78760	House Bluebry	House Tubb	Pool Name House Drinkard	House ABO
Property Code 303228	Property Name RED TAG			Well Number 7	
OGRID No. 873	Operator Name APACHE CORPORATION			Elevation 3568'	

Surface Location

UL or lot No.	Section	Township	Range	Lot Idn	Feet from the	North/South line	Feet from the	East/West line	County
J	2	20-S	38-E		2310	SOUTH	1650	EAST	LEA

Bottom Hole Location If Different From Surface

UL or lot No.	Section	Township	Range	Lot Idn	Feet from the	North/South line	Feet from the	East/West line	County
Dedicated Acres 40		Joint or Infill		Consolidation Code		Order No.			

NO ALLOWABLE WILL BE ASSIGNED TO THIS COMPLETION UNTIL ALL INTERESTS HAVE BEEN CONSOLIDATED OR A NON-STANDARD UNIT HAS BEEN APPROVED BY THE DIVISION

LOT 4	LOT 3	LOT 2	LOT 1
39.73 AC.	39.77 AC.	39.79 AC.	39.83 AC.
<p>GEODETIC COORDINATES NAD 27 NME</p> <p>SURFACE LOCATION Y=584563.0 N X=875020.1 E</p> <p>LAT.=32.601165° N LONG.=103.115597° W</p> <p>LAT.=32° 36' 04" N LONG.=103° 06' 56" W</p> <p>GEODETIC COORDINATES NAD 83 NME</p> <p>SURFACE LOCATION Y=584622.0 N X=916202.0 E</p> <p>LAT.=32.601280° N LONG.=103.116074° W</p> <p>LAT.=32° 36' 05" N LONG.=103° 06' 58" W</p>			

OPERATOR CERTIFICATION

I hereby certify that the information herein is true and complete to the best of my knowledge and belief, and that this organization either owns a working interest or unleased mineral interest in the land including the proposed bottom hole location or has a right to drill this well at this location pursuant to a contract with an owner of such mineral or working interest, or to a voluntary pooling agreement or a compulsory pooling order heretofore entered by the division.

Michelle Cooper 6-2-14
Signature Date

Michelle Cooper
Printed Name

michelle.cooper@apachecorp.com
E-mail Address

SURVEYOR CERTIFICATION

I hereby certify that the well location shown on this plat was plotted from field notes of actual surveys made by me or under my supervision, and that the same is true and correct to the best of my belief.

APRIL 30, 2014
Date of Survey

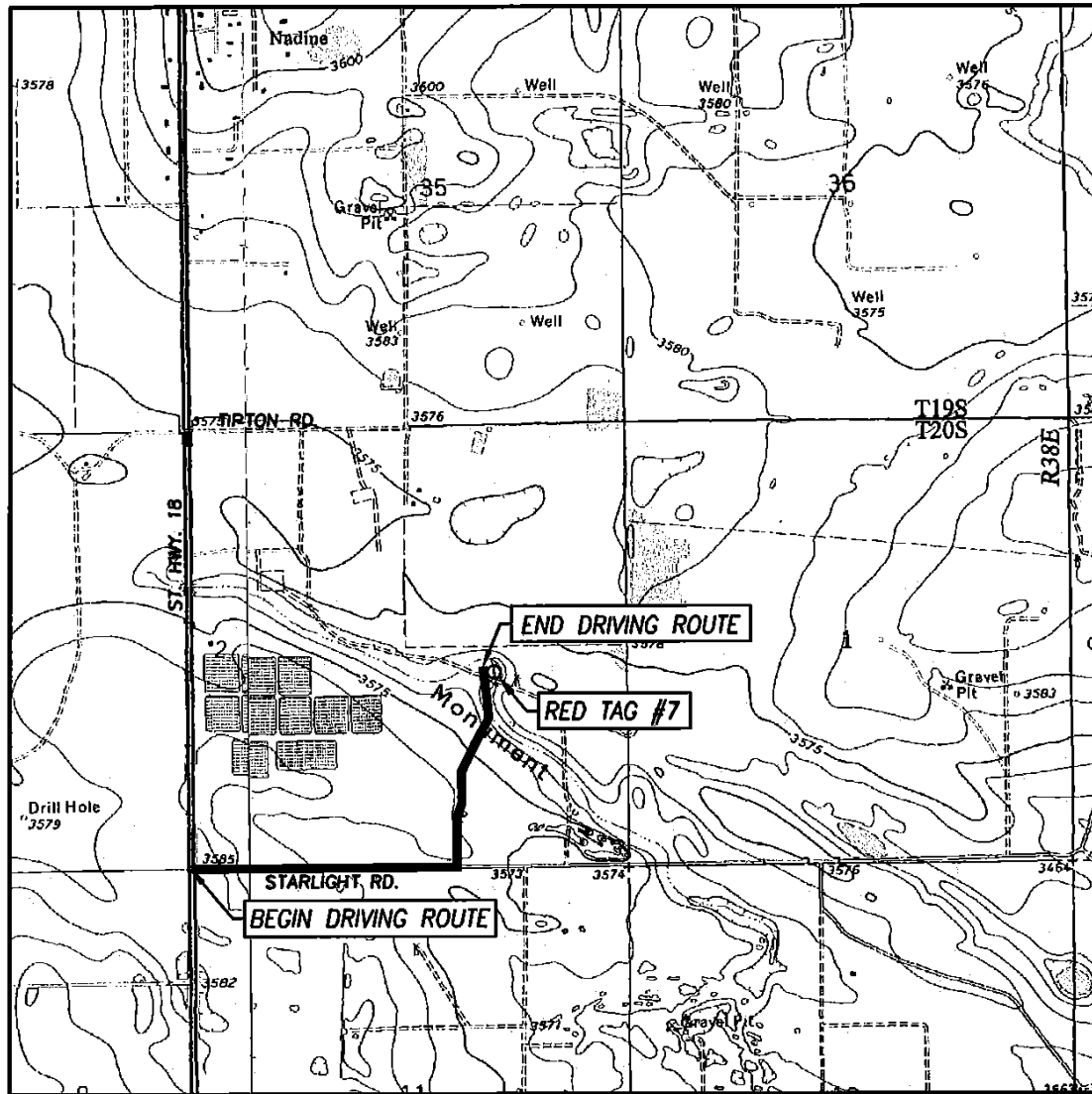
Ronald J. Eidson
Signature & Seal of Professional Surveyor

NEW MEXICO
3239
RECEIVED
05/16/2014

Certificate Number: 12641
Ronald J. Eidson 3239

ACK JWSC W.O.: 14.11.0398

LOCATION VERIFICATION MAP



SCALE: 1" = 2000'

CONTOUR INTERVAL:
HOBBS SE, N.M. - 10'
HOBBS SW, N.M. - 10'

SEC. 2 TWP. 20-S RGE. 38-E

SURVEY N.M.P.M.

COUNTY LEA STATE NEW MEXICO

DESCRIPTION 2310' FSL & 1650' FEL

ELEVATION 3568'

OPERATOR APACHE CORPORATION

LEASE RED TAG

U.S.G.S. TOPOGRAPHIC MAP
HOBBS SE, N.M.

DIRECTIONS TO RED TAG #7:

FROM THE INTERSECTION OF ST. HIGHWAY 18 AND STARLIGHT ROAD,
GO EAST ON STARLIGHT ROAD FOR APPROX. 0.5 MILES. TURN LEFT
AND GO NORTH ON LEASE ROAD FOR APPROX. 0.4 MILES. THE
LOCATION STAKE IS EAST OF ROAD APPROX. 85 FEET.

PROVIDING SURVEYING SERVICES
SINCE 1946

JOHN WEST SURVEYING COMPANY

412 N. DAL PASO HOBBS, N.M. 88240
(575) 393-3117 www.jwsc.biz
TBPLS# 10021000

DISTRICT I
1625 N. French Dr., Hobbs, NM 88240
Phone: (575) 393-6161 Fax: (575) 393-0720

DISTRICT II
811 S. First St., Artesia, NM 88210
Phone: (575) 748-1283 Fax: (575) 748-9720

DISTRICT III
1000 Rio Brazos Road, Aztec, NM 87410
Phone: (505) 334-6178 Fax: (505) 334-6170

DISTRICT IV
1220 S. St. Francis Dr., Santa Fe, NM 87505
Phone: (505) 476-3460 Fax: (505) 476-3462

State of New Mexico
Energy, Minerals & Natural Resources Department
OIL CONSERVATION DIVISION
1220 South St. Francis Dr.
Santa Fe, New Mexico 87505

Form C-102
Revised August 1, 2011
Submit one copy to appropriate
District Office

☐ AMENDED REPORT

WELL LOCATION AND ACREAGE DEDICATION PLAT

API Number 30-025-	Pool Code 33230 78760	House Bluebry	House Tubb	Pool Name House Drinkard	House ABO
Property Code 303228	Property Name RED TAG			Well Number 7	
OGRID No. 873	Operator Name APACHE CORPORATION			Elevation 3568'	

Surface Location

UL or lot No.	Section	Township	Range	Lot Idn	Feet from the	North/South line	Feet from the	East/West line	County
J	2	20-S	38-E		2310	SOUTH	1650	EAST	LEA

Bottom Hole Location If Different From Surface

UL or lot No.	Section	Township	Range	Lot Idn	Feet from the	North/South line	Feet from the	East/West line	County
Dedicated Acres 40	Joint or Infill	Consolidation Code	Order No.						

NO ALLOWABLE WILL BE ASSIGNED TO THIS COMPLETION UNTIL ALL INTERESTS HAVE BEEN CONSOLIDATED OR A NON-STANDARD UNIT HAS BEEN APPROVED BY THE DIVISION

LOT 4	LOT 3	LOT 2	LOT 1
39.73 AC.	39.77 AC.	39.79 AC.	39.83 AC.
<p>GEODETIC COORDINATES NAD 27 NME</p> <p>SURFACE LOCATION Y=584563.0 N X=875020.1 E</p> <p>LAT.=32.601165° N LONG.=103.115597° W</p> <p>LAT.=32° 36' 04" N LONG.=103° 06' 56" W</p> <p>GEODETIC COORDINATES NAD 83 NME</p> <p>SURFACE LOCATION Y=584622.0 N X=916202.0 E</p> <p>LAT.=32.601280° N LONG.=103.116074° W</p> <p>LAT.=32° 36' 05" N LONG.=103° 06' 58" W</p>			

OPERATOR CERTIFICATION

I hereby certify that the information herein is true and complete to the best of my knowledge and belief, and that this organization either owns a working interest or unleased mineral interest in the land including the proposed bottom hole location or has a right to drill this well at this location pursuant to a contract with an owner of such mineral or working interest, or to a voluntary pooling agreement or a compulsory pooling order heretofore entered by the division.

Michelle Cooper 6-2-14
Signature Date

Michelle Cooper
Printed Name

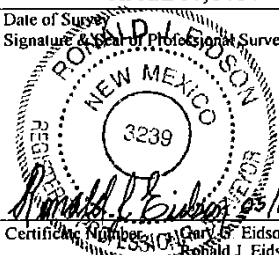
michelle.cooper@apachecorp.com
E-mail Address

SURVEYOR CERTIFICATION

I hereby certify that the well location shown on this plat was plotted from field notes of actual surveys made by me or under my supervision, and that the same is true and correct to the best of my belief.

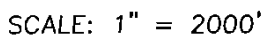
APRIL 30, 2014
Date of Survey

Ronald J. Eidson
Signature & Seal of Professional Surveyor



Certificate Number: *3239* (3239)
Surveyor: *Ronald J. Eidson* (Ronald J. Eidson)
ACK JWSC W.O.: 14.11.0398

NORTH



CONTOUR INTERVAL:
HOBBS SE, N.M. - 10'
HOBBS SW, N.M. - 10'

SEC. 2 TWP. 20-S RGE. 38-E
SURVEY N.M.P.M.
COUNTY LEA STATE NEW MEXICO
DESCRIPTION 2310' FSL & 1650' FEL
ELEVATION 3568'

OPERATOR APACHE CORPORATION
LEASE RED TAG
U.S.G.S. TOPOGRAPHIC MAP
HOBBS SE, N.M.

DIRECTIONS TO RED TAG #7:

FROM THE INTERSECTION OF ST. HIGHWAY 18 AND STARLIGHT ROAD,
GO EAST ON STARLIGHT ROAD FOR APPROX. 0.5 MILES. TURN LEFT
AND GO NORTH ON LEASE ROAD FOR APPROX. 0.4 MILES. THE
LOCATION STAKE IS EAST OF ROAD APPROX. 85 FEET.



PROVIDING SURVEYING SERVICES
SINCE 1946
JOHN WEST SURVEYING COMPANY
412 N. DAL PASO HOBBS, N.M. 88240
(575) 393-3117 www.jwsc.biz
TBPLS# 10021000

DISTRICT I
1625 N. French Dr., Hobbs, NM 88240
Phone: (575) 393-6161 Fax: (575) 393-0720

DISTRICT II
811 S. First St., Artesia, NM 88210
Phone: (575) 748-1283 Fax: (575) 748-9720

DISTRICT III
1000 Rio Brazos Road, Aztec, NM 87410
Phone: (505) 334-6178 Fax: (505) 334-6170

DISTRICT IV
1220 S. St. Francis Dr., Santa Fe, NM 87505
Phone: (505) 476-3460 Fax: (505) 476-3462

State of New Mexico
Energy, Minerals & Natural Resources Department
OIL CONSERVATION DIVISION
1220 South St. Francis Dr.
Santa Fe, New Mexico 87505

Form C-102
Revised August 1, 2011
Submit one copy to appropriate
District Office

☐ AMENDED REPORT

WELL LOCATION AND ACREAGE DEDICATION PLAT

API Number 30-025-	Pool Code 33230 78760	House Bluebry	House Tubb	Pool Name House Drinkard	House ABO
Property Code 303228	Property Name RED TAG			Well Number 7	
OGRID No. 873	Operator Name APACHE CORPORATION			Elevation 3568'	

Surface Location

UL or lot No.	Section	Township	Range	Lot Idn	Feet from the	North/South line	Feet from the	East/West line	County
J	2	20-S	38-E		2310	SOUTH	1650	EAST	LEA

Bottom Hole Location If Different From Surface

UL or lot No.	Section	Township	Range	Lot Idn	Feet from the	North/South line	Feet from the	East/West line	County
Dedicated Acres 40		Joint or Infill		Consolidation Code		Order No.			

NO ALLOWABLE WILL BE ASSIGNED TO THIS COMPLETION UNTIL ALL INTERESTS HAVE BEEN CONSOLIDATED OR A NON-STANDARD UNIT HAS BEEN APPROVED BY THE DIVISION

LOT 4	LOT 3	LOT 2	LOT 1
39.73 AC.	39.77 AC.	39.79 AC.	39.83 AC.
<p>GEODETIC COORDINATES NAD 27 NME</p> <p>SURFACE LOCATION Y=584563.0 N X=875020.1 E</p> <p>LAT.=32.601165° N LONG.=103.115597° W</p> <p>LAT.=32° 36' 04" N LONG.=103° 06' 56" W</p> <p>GEODETIC COORDINATES NAD 83 NME</p> <p>SURFACE LOCATION Y=584622.0 N X=916202.0 E</p> <p>LAT.=32.601280° N LONG.=103.116074° W</p> <p>LAT.=32° 36' 05" N LONG.=103° 06' 58" W</p>			

OPERATOR CERTIFICATION

I hereby certify that the information herein is true and complete to the best of my knowledge and belief, and that this organization either owns a working interest or unleased mineral interest in the land including the proposed bottom hole location or has a right to drill this well at this location pursuant to a contract with an owner of such mineral or working interest, or to a voluntary pooling agreement or a compulsory pooling order heretofore entered by the division.

Michelle Cooper 6-2-14
Signature Date

Michelle Cooper
Printed Name

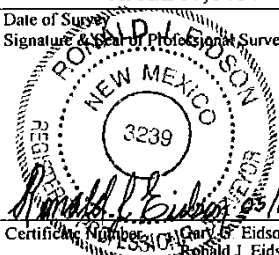
michelle.cooper@apachecorp.com
E-mail Address

SURVEYOR CERTIFICATION

I hereby certify that the well location shown on this plat was plotted from field notes of actual surveys made by me or under my supervision, and that the same is true and correct to the best of my belief.

APRIL 30, 2014
Date of Survey

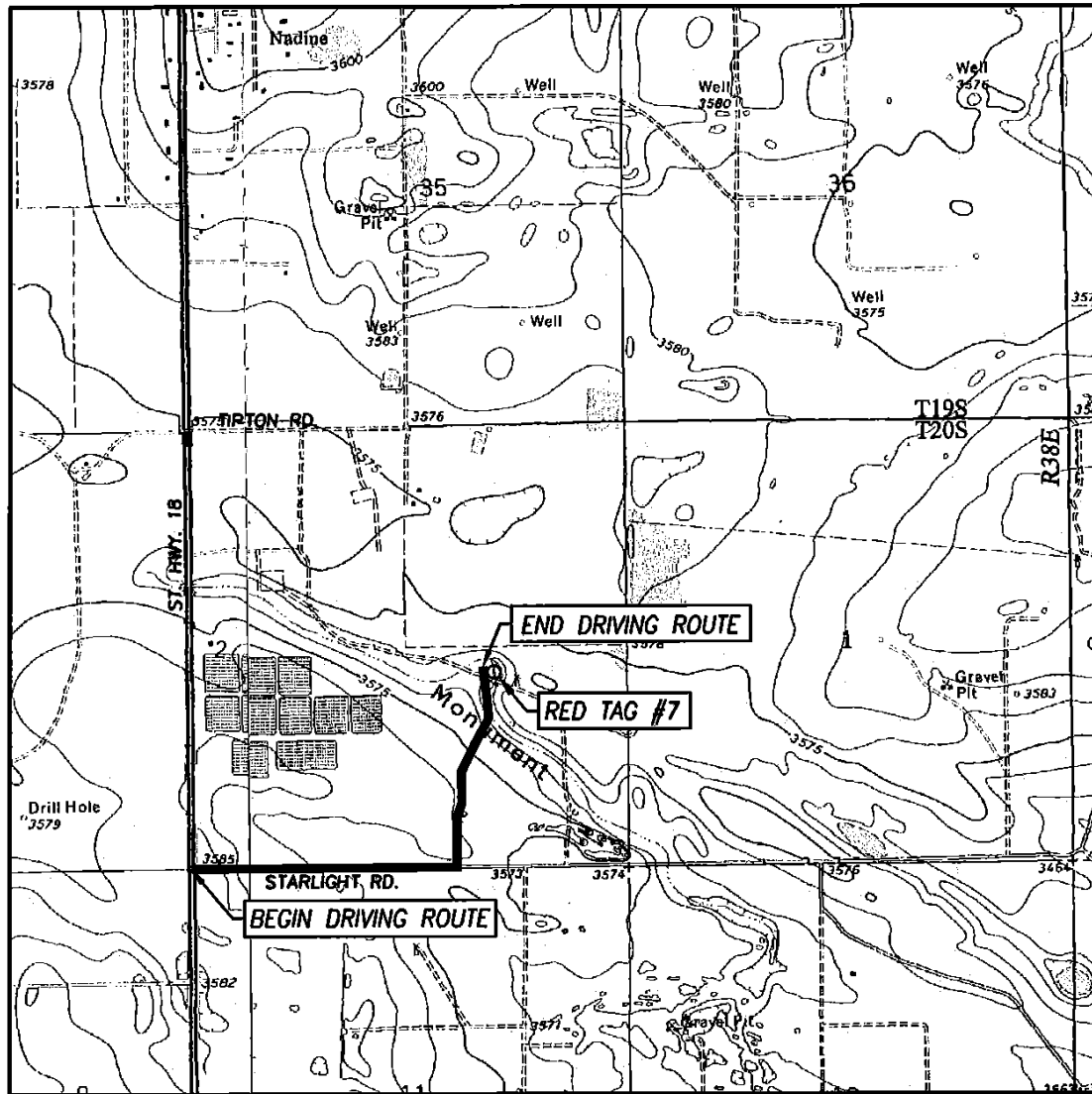
Ronald J. Eidson
Signature & Seal of Professional Surveyor



Certificate Number: *3239*
Ronald J. Eidson 12641
Eidson 3239

ACK JWSC W.O.: 14.11.0398

LOCATION VERIFICATION MAP



SCALE: 1" = 2000'

CONTOUR INTERVAL:
HOBBS SE, N.M. - 10'
HOBBS SW, N.M. - 10'

SEC. 2 TWP. 20-S RGE. 38-E

SURVEY N.M.P.M.

COUNTY LEA STATE NEW MEXICO

DESCRIPTION 2310' FSL & 1650' FEL

ELEVATION 3568'

OPERATOR APACHE CORPORATION

LEASE RED TAG

U.S.G.S. TOPOGRAPHIC MAP
HOBBS SE, N.M.

DIRECTIONS TO RED TAG #7:

FROM THE INTERSECTION OF ST. HIGHWAY 18 AND STARLIGHT ROAD,
GO EAST ON STARLIGHT ROAD FOR APPROX. 0.5 MILES. TURN LEFT
AND GO NORTH ON LEASE ROAD FOR APPROX. 0.4 MILES. THE
LOCATION STAKE IS EAST OF ROAD APPROX. 85 FEET.

PROVIDING SURVEYING SERVICES
SINCE 1946

JOHN WEST SURVEYING COMPANY

412 N. DAL PASO HOBBS, N.M. 88240
(575) 393-3117 www.jwsc.biz
TBPLS# 10021000

District I
1625 N. French Dr., Hobbs, NM 88240
Phone:(575) 393-8181 Fax:(575) 393-0720
District II
811 S. First St., Artesia, NM 88210
Phone:(575) 748-1283 Fax:(575) 748-9720
District III
1000 Rio Brazos Rd., Aztec, NM 87410
Phone:(505) 334-8178 Fax:(505) 334-8170
District IV
1220 S. St Francis Dr., Santa Fe, NM 87505
Phone:(505) 476-3470 Fax:(505) 476-3462

State of New Mexico
Energy, Minerals and Natural Resources
Oil Conservation Division
1220 S. St Francis Dr.
Santa Fe, NM 87505

Form APD Comments

Permit 187046

PERMIT COMMENTS

Operator Name and Address: APACHE CORP [873] 303 Veterans Airpark Lane Midland, TX 79705		API Number: 30-025-41887
		Well: REDTAG #007

Created By	Comment	Comment Date
------------	---------	--------------

District I

1625 N. French Dr., Hobbs, NM 88240
Phone:(575) 393-8161 Fax:(575) 393-0720

District II

811 S. First St., Artesia, NM 88210
Phone:(575) 748-1283 Fax:(575) 748-9720

District III

1000 Rio Brazos Rd., Aztec, NM 87410
Phone:(505) 334-6178 Fax:(505) 334-6170

District IV

1220 S. St Francis Dr., Santa Fe, NM 87505
Phone:(505) 476-3470 Fax:(505) 476-3462

Form APD Conditions

State of New Mexico
Energy, Minerals and Natural Resources
Oil Conservation Division
1220 S. St Francis Dr.
Santa Fe, NM 87505

Permit 187046

PERMIT CONDITIONS OF APPROVAL

Operator Name and Address: APACHE CORP [873] 303 Veterans Airpark Lane Midland, TX 79705	API Number: 30-025-41887
	Well: REDTAG #007

OCD Reviewer	Condition
pkautz	Once the well is spud, to prevent ground water contamination through whole or partial conduits from the surface, the operator shall drill without interruption through the fresh water zone or zones and shall immediately set in cement the water protection string
pkautz	Once the well is spud, to prevent ground water contamination through whole or partial conduits from the surface, the operator shall drill without interruption through the fresh water zone or zones and shall immediately set in cement the water protection string
pkautz	1) SURFACE & INTERMEDIATE CASING - Cement must circulate to surface -- 2) PRODUCTION CASING - Cement must tie back into intermediate casing --
pkautz	If using a pit for drilling and completion operations, must have an approved pit from prior to spudding the well.
pkautz	Surface casing must be set 25' below top of Rustler Anhydrite in order to seal off protectable water