

**District I**  
1625 N. French Dr., Hobbs, NM 88240  
Phone:(575) 393-8161 Fax:(575) 393-0720  
**District II**  
811 S. First St., Artesia, NM 88210  
Phone:(575) 748-1283 Fax:(575) 748-9720  
**District III**  
1000 Rio Brazos Rd., Aztec, NM 87410  
Phone:(505) 334-8178 Fax:(505) 334-8170  
**District IV**  
1220 S. St Francis Dr., Santa Fe, NM 87505  
Phone:(505) 476-3470 Fax:(505) 476-3482

**State of New Mexico**  
**Energy, Minerals and Natural Resources**  
**Oil Conservation Division**  
**1220 S. St Francis Dr.**  
**Santa Fe, NM 87505**

Form C-101  
August 1, 2011  
Permit 194053

**APPLICATION FOR PERMIT TO DRILL, RE-ENTER, DEEPEN, PLUGBACK, OR ADD A ZONE**

1. Operator Name and Address APACHE CORP 303 Veterans Airpark Lane Midland, TX 79705		2. OGRID Number 873
4. Property Code 303216		3. API Number 30-025-42187
5. Property Name DIXIE QUEEN		6. Well No. 005

**7. Surface Location**

UL - Lot	Section	Township	Range	Lot Idn	Feet From	N/S Line	Feet From	E/W Line	County
A	11	20S	38E		990	N	850	E	Lea

**8. Proposed Bottom Hole Location**

UL - Lot	Section	Township	Range	Lot Idn	Feet From	N/S Line	Feet From	E/W Line	County
A	11	20S	38E	A	990	N	990	E	Lea

**9. Pool Information**

HOUSE;BLINEBRY	33230
HOUSE;TUBB	78760
HOUSE;DRINKARD	33250
HOUSE;ABO	33210

**Additional Well Information**

11. Work Type New Well	12. Well Type OIL	13. Cable/Rotary	14. Lease Type Private	15. Ground Level Elevation 3572
16. Multiple Y	17. Proposed Depth 8000	18. Formation Abo	19. Contractor	20. Spud Date
Depth to Ground water		Distance from nearest fresh water well		Distance to nearest surface water

☒ We will be using a closed-loop system in lieu of lined pits

**21. Proposed Casing and Cement Program**

Type	Hole Size	Casing Size	Casing Weight/ft	Setting Depth	Sacks of Cement	Estimated TOC
Surf	12.25	8.625	24	1600	802	
Prod	7.875	5.5	17	8000	1006	

**Casing/Cement Program: Additional Comments**

--

**22. Proposed Blowout Prevention Program**

Type	Working Pressure	Test Pressure	Manufacturer
Hydril	3000	2000	

23. I hereby certify that the information given above is true and complete to the best of my knowledge and belief. I further certify I have complied with 19.15.14.9 (A) NMAC <input checked="" type="checkbox"/> and/or 19.15.14.9 (B) NMAC <input checked="" type="checkbox"/> , if applicable.  Signature: Printed Name: Electronically filed by Bobby Smith Title: Email Address: bobby.smith@apachecorp.com Date: 10/14/2014	<div style="text-align: center;"><b>OIL CONSERVATION DIVISION</b></div> Approved By: Paul Kautz Title: Geologist Approved Date: 10/14/2014 Conditions of Approval Attached
Expiration Date: 10/14/2016	

DISTRICT I  
1625 N. French Dr., Hobbs, NM 88240  
Phone: (575) 393-6161 Fax: (575) 393-0720

DISTRICT II  
811 S. First St., Artesia, NM 88210  
Phone: (575) 748-1283 Fax: (575) 748-9720

DISTRICT III  
1000 Rio Brazos Road, Aztec, NM 87410  
Phone: (505) 334-6178 Fax: (505) 334-6170

DISTRICT IV  
1220 S. St. Francis Dr., Santa Fe, NM 87505  
Phone: (505) 476-3460 Fax: (505) 476-3462

State of New Mexico  
Energy, Minerals & Natural Resources Department  
OIL CONSERVATION DIVISION  
1220 South St. Francis Dr.  
Santa Fe, New Mexico 87505

Form C-102  
Revised August 1, 2011  
Submit one copy to appropriate  
District Office

☐ AMENDED REPORT

WELL LOCATION AND ACREAGE DEDICATION PLAT

API Number <b>30-025-</b>	Pool Code <b>33230</b>	Pool Name <b>House; Blinberry</b>
Property Code <b>303216</b>	Property Name <b>DIXIE QUEEN</b>	Well Number <b>5</b>
OGRID No. <b>873</b>	Operator Name <b>APACHE CORPORATION</b>	Elevation <b>3572'</b>

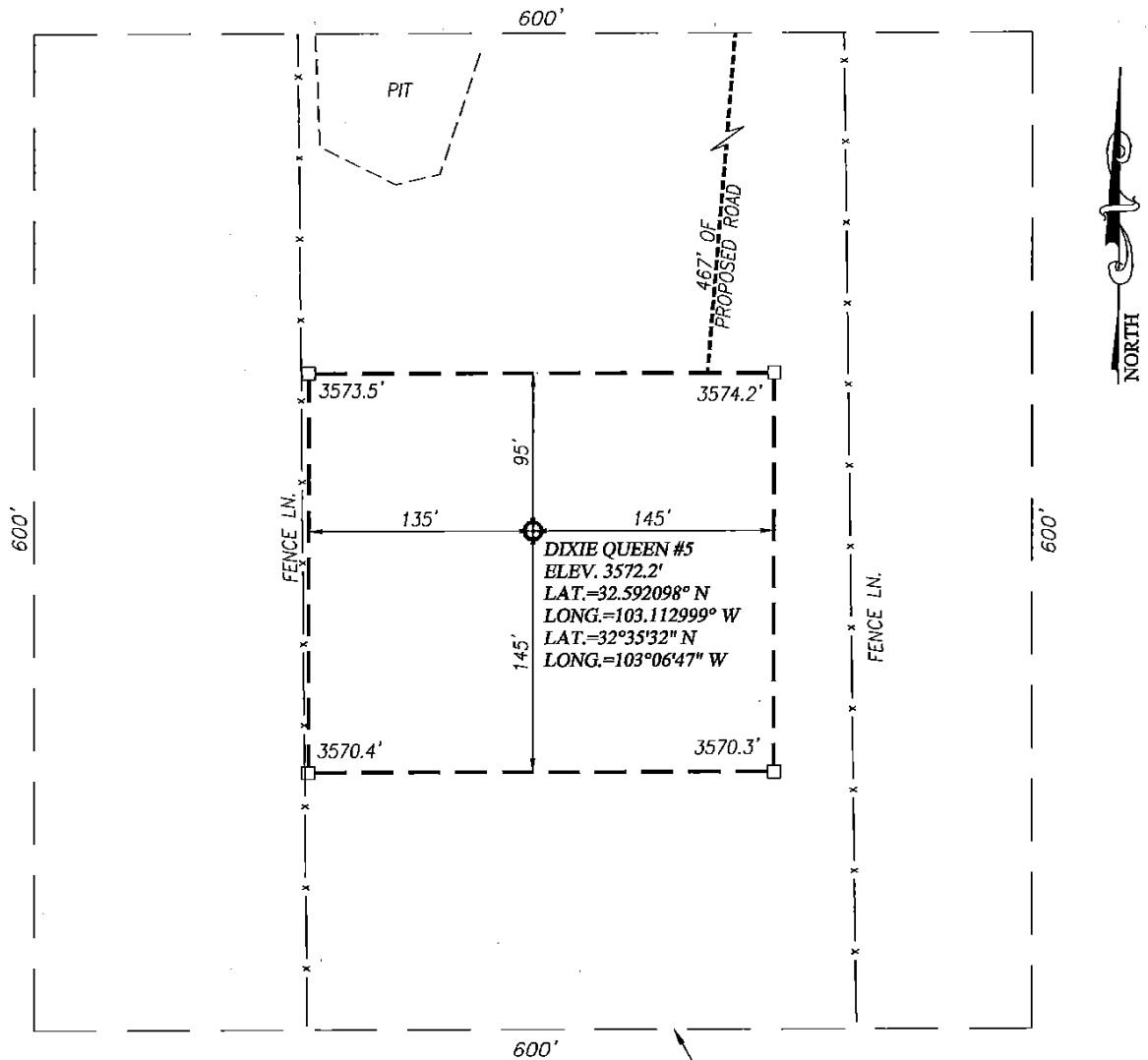
UL or lot No.	Section	Township	Range	Lot Idn	Feet from the	North/South line	Feet from the	East/West line	County
<b>A</b>	<b>11</b>	<b>20-S</b>	<b>38-E</b>		<b>990</b>	<b>NORTH</b>	<b>850</b>	<b>EAST</b>	<b>LEA</b>

Bottom Hole Location If Different From Surface

UL or lot No.	Section	Township	Range	Lot Idn	Feet from the	North/South line	Feet from the	East/West line	County
<b>A</b>	<b>11</b>	<b>20-S</b>	<b>38-E</b>		<b>990</b>	<b>NORTH</b>	<b>990</b>	<b>EAST</b>	<b>LEA</b>
Dedicated Acres <b>40</b>	Joint or Infill	Consolidation Code	Order No.						

NO ALLOWABLE WILL BE ASSIGNED TO THIS COMPLETION UNTIL ALL INTERESTS HAVE BEEN CONSOLIDATED OR A NON-STANDARD UNIT HAS BEEN APPROVED BY THE DIVISION

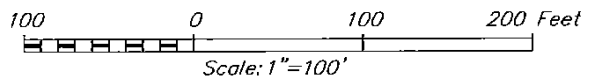
<p>GEODETIC COORDINATES NAD 27 NME</p> <p>SURFACE LOCATION Y= 581273.2 N X= 875858.1 E</p> <p>LAT.=32.592098° N LONG.=103.112999° W</p> <p>LAT.=32°35'32" N LONG.=103°06'47" W</p> <p>BOTTOM HOLE LOCATION Y= 581271.5 N X= 875718.1 E</p>		<p><b>OPERATOR CERTIFICATION</b></p> <p>I hereby certify that the information herein is true and complete to the best of my knowledge and belief, and that this organization either owns a working interest or unleased mineral interest in the land including the proposed bottom hole location or has a right to drill this well at this location pursuant to a contract with an owner of such mineral or working interest, or to a voluntary pooling agreement or a compulsory pooling order heretofore entered by the division.</p> <p><i>Michelle Cooper</i> 10-13-14 Signature Date</p> <p><i>Michelle Cooper</i> Printed Name</p> <p><i>michelle.cooper@apachecorp.com</i> E-mail Address</p>
<p><b>CORNER COORDINATES TABLE</b></p> <p>A - Y= 582257.3 N, X= 875378.0 E B - Y= 582273.4 N, X= 876696.7 E C - Y= 580951.0 N, X= 876711.8 E D - Y= 580935.7 N, X= 875392.8 E</p>		<p><b>SURVEYOR CERTIFICATION</b></p> <p>I hereby certify that the well location shown on this plat was plotted from field notes of actual surveys made by me or under my supervision, and that the same is true and correct to the best of my belief.</p> <p>AUGUST 26, 2014</p> <p>Date of Survey</p> <p>Signature &amp; Seal of Professional Surveyor:</p> <p><i>Ronald J. Eidson</i> 8/26/2014 Certified by Gary G. Eidson 12641 Professional Ronald J. Eidson 3239</p> <p>LSL JWSC W.O.: 14.11.0893</p>



NOTE:  
1) SEE "LOCATION VERIFICATION MAP"  
FOR PROPOSED ROAD LOCATION.

#### DIRECTIONS TO DIXIE QUEEN #5:

FROM THE INTERSECTION OF ST. HWY. 18 AND STARLIGHT RD.  
GO EAST ON STARLIGHT RD. APPROX. 0.8 MILES TURN RIGHT  
AND FOLLOW PROPOSED ROAD SOUTH 97' ROAD BENDS LEFT  
SOUTHEAST 172' TO NORTHEAST PAD CORNER OF DIXIE QUEEN  
#6 FROM SOUTHEAST PAD CORNER FOLLOW PROPOSED ROAD  
467' TO THIS LOCATION.



## APACHE CORPORATION

**DIXIE QUEEN #5 WELL**  
**LOCATED 990 FEET FROM THE NORTH LINE**  
**AND 850 FEET FROM THE EAST LINE OF SECTION 11,**  
**TOWNSHIP 20 SOUTH, RANGE 38 EAST, N.M.P.M.,**  
**LEA COUNTY, NEW MEXICO**



PROVIDING SURVEYING SERVICES  
SINCE 1946  
**JOHN WEST SURVEYING COMPANY**

412 N. DAL PASO HOBBS, N.M. 88240  
(575) 393-3117 www.jwsc.biz  
TBPLS# 10021000

Survey Date: 8/26/14

CAD Date: 9/9/14

Drawn By: LSL

W.O. No.: 14110893

Rev: .

Rel. W.O.:

Sheet 1 of 1

DISTRICT I  
1625 N. French Dr., Hobbs, NM 88240  
Phone: (575) 393-6161 Fax: (575) 393-0720

DISTRICT II  
811 S. First St., Artesia, NM 88210  
Phone: (575) 748-1283 Fax: (575) 748-9720

DISTRICT III  
1000 Rio Brazos Road, Aztec, NM 87410  
Phone: (505) 334-6178 Fax: (505) 334-6170

DISTRICT IV  
1220 S. St. Francis Dr., Santa Fe, NM 87505  
Phone: (505) 476-3460 Fax: (505) 476-3462

State of New Mexico  
Energy, Minerals & Natural Resources Department  
OIL CONSERVATION DIVISION  
1220 South St. Francis Dr.  
Santa Fe, New Mexico 87505

Form C-102  
Revised August 1, 2011  
Submit one copy to appropriate  
District Office

☐ AMENDED REPORT

WELL LOCATION AND ACREAGE DEDICATION PLAT

API Number <b>30-025-</b>	Pool Code <b>78760</b>	Pool Name <b>House; Tubb</b>
Property Code	Property Name <b>DIXIE QUEEN</b>	Well Number <b>5</b>
OGRID No. <b>873</b>	Operator Name <b>APACHE CORPORATION</b>	Elevation <b>3572'</b>

Surface Location

UL or lot No.	Section	Township	Range	Lot Idn	Feet from the	North/South line	Feet from the	East/West line	County
A	11	20-S	38-E		990	NORTH	850	EAST	LEA

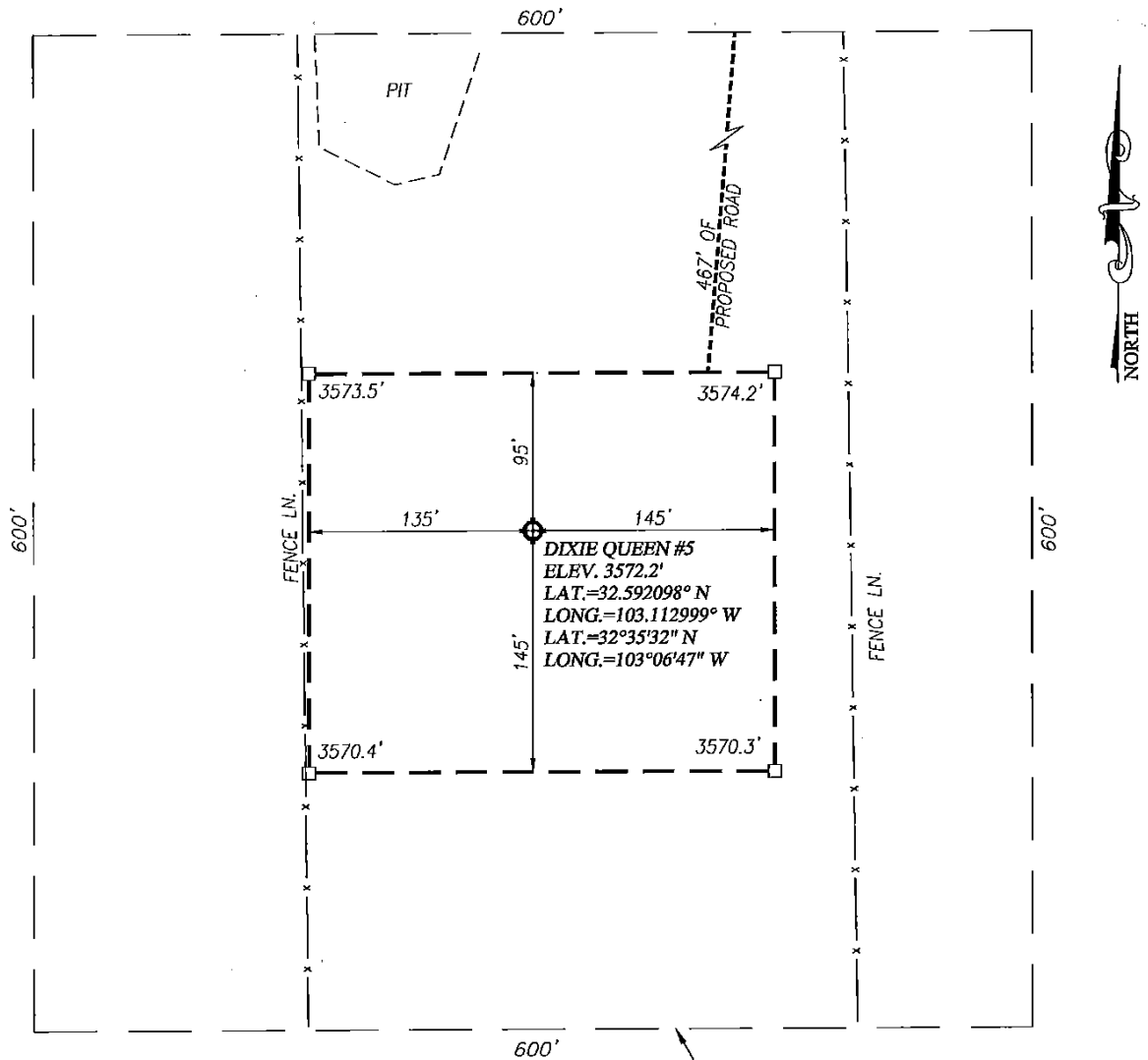
Bottom Hole Location If Different From Surface

UL or lot No.	Section	Township	Range	Lot Idn	Feet from the	North/South line	Feet from the	East/West line	County
A	11	20-S	38-E		990	NORTH	990	EAST	LEA

Dedicated Acres	Joint or Infill	Consolidation Code	Order No.
<b>40</b>			

NO ALLOWABLE WILL BE ASSIGNED TO THIS COMPLETION UNTIL ALL INTERESTS HAVE BEEN CONSOLIDATED OR A NON-STANDARD UNIT HAS BEEN APPROVED BY THE DIVISION

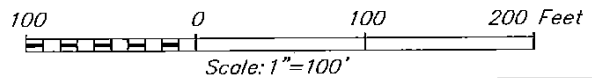
<p>GEODETIC COORDINATES NAD 27 NME</p> <p>SURFACE LOCATION Y= 581273.2 N X= 875858.1 E</p> <p>LAT.=32.592098° N LONG.=103.112999° W</p> <p>LAT.=32°35'32" N LONG.=103°06'47" W</p> <p>BOTTOM HOLE LOCATION Y= 581271.5 N X= 875718.1 E</p>	<p>GRID AZ.=269°19'19" HORIZ. DIST.=140.0'</p>	<p><b>OPERATOR CERTIFICATION</b></p> <p>I hereby certify that the information herein is true and complete to the best of my knowledge and belief, and that this organization either owns a working interest or unleased mineral interest in the land including the proposed bottom hole location or has a right to drill this well at this location pursuant to a contract with an owner of such mineral or working interest, or to a voluntary pooling agreement or a compulsory pooling order heretofore entered by the division.</p> <p><i>Michelle Cooper</i> 10-13-14 Signature Date</p> <p><i>Michelle Cooper</i> Printed Name</p> <p><i>michelle.cooper@apachecorp.com</i> E-mail Address</p>
<p><b>CORNER COORDINATES TABLE</b></p> <p>A - Y= 582257.3 N, X= 875378.0 E B - Y= 582273.4 N, X= 876696.7 E C - Y= 580951.0 N, X= 876711.8 E D - Y= 580935.7 N, X= 875392.8 E</p>		<p><b>SURVEYOR CERTIFICATION</b></p> <p>I hereby certify that the well location shown on this plat was plotted from field notes of actual surveys made by me or under my supervision, and that the same is true and correct to the best of my belief.</p> <p>AUGUST 26, 2014</p> <p>Date of Survey</p> <p>Signature of Professional Surveyor: <i>Clayton Eidson</i></p> <p> Clayton Eidson 12641 Professional Surveyor 3239</p> <p>LSL JWSC W.O.: 14.11.0893</p>



NOTE:  
1) SEE "LOCATION VERIFICATION MAP"  
FOR PROPOSED ROAD LOCATION.

#### DIRECTIONS TO DIXIE QUEEN #5:

FROM THE INTERSECTION OF ST. HWY. 18 AND STARLIGHT RD.  
GO EAST ON STARLIGHT RD. APPROX. 0.8 MILES TURN RIGHT  
AND FOLLOW PROPOSED ROAD SOUTH 97' ROAD BENDS LEFT  
SOUTHEAST 172' TO NORTHEAST PAD CORNER OF DIXIE QUEEN  
#6 FROM SOUTHEAST PAD CORNER FOLLOW PROPOSED ROAD  
467' TO THIS LOCATION.



## APACHE CORPORATION

**DIXIE QUEEN #5 WELL**  
**LOCATED 990 FEET FROM THE NORTH LINE**  
**AND 850 FEET FROM THE EAST LINE OF SECTION 11,**  
**TOWNSHIP 20 SOUTH, RANGE 38 EAST, N.M.P.M.,**  
**LEA COUNTY, NEW MEXICO**



PROVIDING SURVEYING SERVICES  
SINCE 1946  
**JOHN WEST SURVEYING COMPANY**  
412 N. DAL PASO HOBBS, N.M. 88240  
(575) 393-3117 www.jwsc.biz  
TBPLS# 10021000

Survey Date: 8/26/14

CAD Date: 9/9/14

Drawn By: LSL

W.O. No.: 14110893

Rev. .

Rel. W.O.:

Sheet 1 of 1

DISTRICT I  
1625 N. French Dr., Hobbs, NM 88240  
Phone: (575) 393-6161 Fax: (575) 393-0720

DISTRICT II  
811 S. First St., Artesia, NM 88210  
Phone: (575) 748-1283 Fax: (575) 748-9720

DISTRICT III  
1000 Rio Brazos Road, Aztec, NM 87410  
Phone: (505) 334-6178 Fax: (505) 334-6170

DISTRICT IV  
1220 S. St. Francis Dr., Santa Fe, NM 87505  
Phone: (505) 476-3460 Fax: (505) 476-3462

State of New Mexico  
Energy, Minerals & Natural Resources Department  
OIL CONSERVATION DIVISION  
1220 South St. Francis Dr.  
Santa Fe, New Mexico 87505

Form C-102  
Revised August 1, 2011  
Submit one copy to appropriate  
District Office

☐ AMENDED REPORT

WELL LOCATION AND ACREAGE DEDICATION PLAT

API Number <b>30-025-</b>	Pool Code <b>33250</b>	Pool Name <b>House; Drinkard</b>
Property Code	Property Name <b>DIXIE QUEEN</b>	Well Number <b>5</b>
OGRID No. <b>873</b>	Operator Name <b>APACHE CORPORATION</b>	Elevation <b>3572'</b>

Surface Location

UL or lot No.	Section	Township	Range	Lot Idn	Feet from the	North/South line	Feet from the	East/West line	County
<b>A</b>	<b>11</b>	<b>20-S</b>	<b>38-E</b>		<b>990</b>	<b>NORTH</b>	<b>850</b>	<b>EAST</b>	<b>LEA</b>

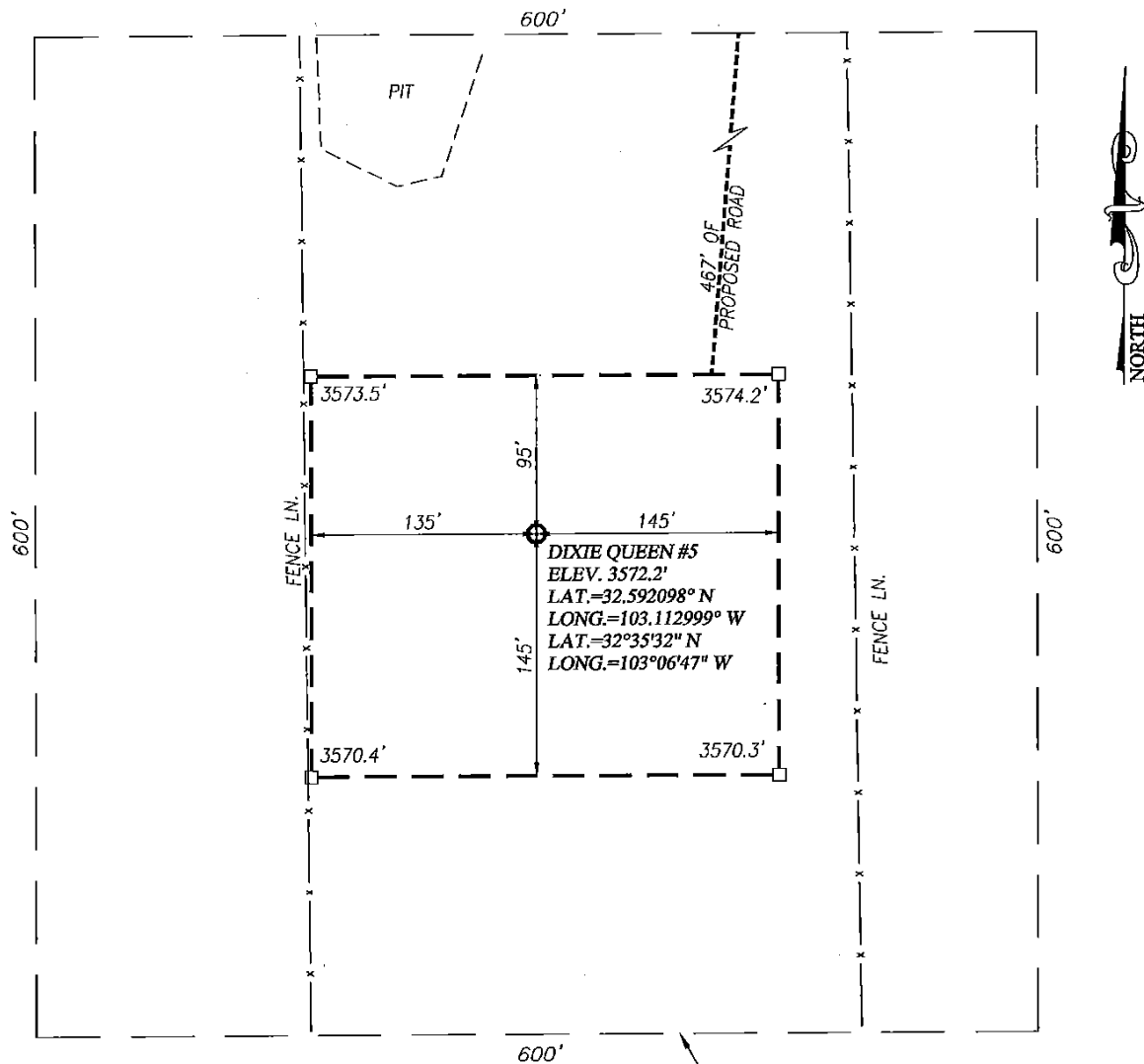
Bottom Hole Location If Different From Surface

UL or lot No.	Section	Township	Range	Lot Idn	Feet from the	North/South line	Feet from the	East/West line	County
<b>A</b>	<b>11</b>	<b>20-S</b>	<b>38-E</b>		<b>990</b>	<b>NORTH</b>	<b>990</b>	<b>EAST</b>	<b>LEA</b>

Dedicated Acres <b>40</b>	Joint or Infill	Consolidation Code	Order No.
------------------------------	-----------------	--------------------	-----------

NO ALLOWABLE WILL BE ASSIGNED TO THIS COMPLETION UNTIL ALL INTERESTS HAVE BEEN CONSOLIDATED OR A NON-STANDARD UNIT HAS BEEN APPROVED BY THE DIVISION

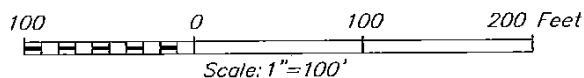
<p>GEODETIC COORDINATES NAD 27 NME</p> <p>SURFACE LOCATION Y= 581273.2 N X= 875858.1 E</p> <p>LAT.=32.592098" N LONG.=103.112999" W</p> <p>LAT.=32°35'32" N LONG.=103°06'47" W</p> <p>BOTTOM HOLE LOCATION Y= 581271.5 N X= 875718.1 E</p>	<p>GRID AZ.=269°19'19" HORIZ. DIST.=140.0'</p>	<p><b>OPERATOR CERTIFICATION</b></p> <p>I hereby certify that the information herein is true and complete to the best of my knowledge and belief, and that this organization either owns a working interest or unless mineral interest in the land including the proposed bottom hole location or has a right to drill this well at this location pursuant to a contract with an owner of such mineral or working interest, or to a voluntary pooling agreement or a compulsory pooling order heretofore entered by the division.</p> <p><i>Michelle Cooper</i> 10-13-14 Signature Date <i>Michelle Cooper</i> Printed Name <i>michelle.cooper@apachecorp.com</i> E-mail Address</p>
<p><b>CORNER COORDINATES TABLE</b></p> <p>A - Y= 582257.3 N, X= 875378.0 E B - Y= 582273.4 N, X= 876696.7 E C - Y= 580951.0 N, X= 876711.8 E D - Y= 580935.7 N, X= 875392.8 E</p>		<p><b>SURVEYOR CERTIFICATION</b></p> <p>I hereby certify that the well location shown on this plat was plotted from field notes of actual surveys made by me or under my supervision, and that the same is true and correct to the best of my belief.</p> <p>AUGUST 26, 2014</p> <p>Date of Survey Signature <i>Michael J. Eidson</i> Professional Surveyor</p> <p> Certificate Number 12641 Michael J. Eidson 3239</p> <p>LSL JWSC W.O.: 14 11.0893</p>



NOTE:  
1) SEE "LOCATION VERIFICATION MAP"  
FOR PROPOSED ROAD LOCATION.

#### DIRECTIONS TO DIXIE QUEEN #5:

FROM THE INTERSECTION OF ST. HWY. 18 AND STARLIGHT RD.  
GO EAST ON STARLIGHT RD. APPROX. 0.8 MILES TURN RIGHT  
AND FOLLOW PROPOSED ROAD SOUTH 97' ROAD BENDS LEFT  
SOUTHEAST 172' TO NORTHEAST PAD CORNER OF DIXIE QUEEN  
#6 FROM SOUTHEAST PAD CORNER FOLLOW PROPOSED ROAD  
467' TO THIS LOCATION.



## APACHE CORPORATION

**DIXIE QUEEN #5 WELL**  
LOCATED 990 FEET FROM THE NORTH LINE  
AND 850 FEET FROM THE EAST LINE OF SECTION 11,  
TOWNSHIP 20 SOUTH, RANGE 38 EAST, N.M.P.M.,  
LEA COUNTY, NEW MEXICO



PROVIDING SURVEYING SERVICES  
SINCE 1946  
**JOHN WEST SURVEYING COMPANY**  
412 N. DAL PASO HOBBS, N.M. 88240  
(575) 393-3117 www.jwsc.biz  
TBPLS# 10021000

Survey Date: 8/26/14

CAD Date: 9/9/14

Drawn By: LSL

W.O. No.: 14110893

Rev. :

Rel. W.O.:

Sheet 1 of 1

DISTRICT I  
1625 N. French Dr., Hobbs, NM 88240  
Phone: (575) 393-6161 Fax: (575) 393-0720

DISTRICT II  
811 S. First St., Artesia, NM 88210  
Phone: (575) 748-1283 Fax: (575) 748-9720

DISTRICT III  
1000 Rio Brazos Road, Aztec, NM 87410  
Phone: (505) 334-6178 Fax: (505) 334-6170

DISTRICT IV  
1220 S. St. Francis Dr., Santa Fe, NM 87505  
Phone: (505) 476-3460 Fax: (505) 476-3462

State of New Mexico  
Energy, Minerals & Natural Resources Department  
OIL CONSERVATION DIVISION  
1220 South St. Francis Dr.  
Santa Fe, New Mexico 87505

Form C-102  
Revised August 1, 2011  
Submit one copy to appropriate  
District Office

AMENDED REPORT

WELL LOCATION AND ACREAGE DEDICATION PLAT

API Number <b>30-025-</b>	Pool Code <b>33210</b>	Pool Name <b>Housej - ABO</b>
Property Code	Property Name <b>DIXIE QUEEN</b>	Well Number <b>5</b>
OGRID No. <b>873</b>	Operator Name <b>APACHE CORPORATION</b>	Elevation <b>3572'</b>

Surface Location

UL or lot No.	Section	Township	Range	Lot Idn	Feet from the	North/South line	Feet from the	East/West line	County
A	11	20-S	38-E		990	NORTH	850	EAST	LEA

Bottom Hole Location If Different From Surface

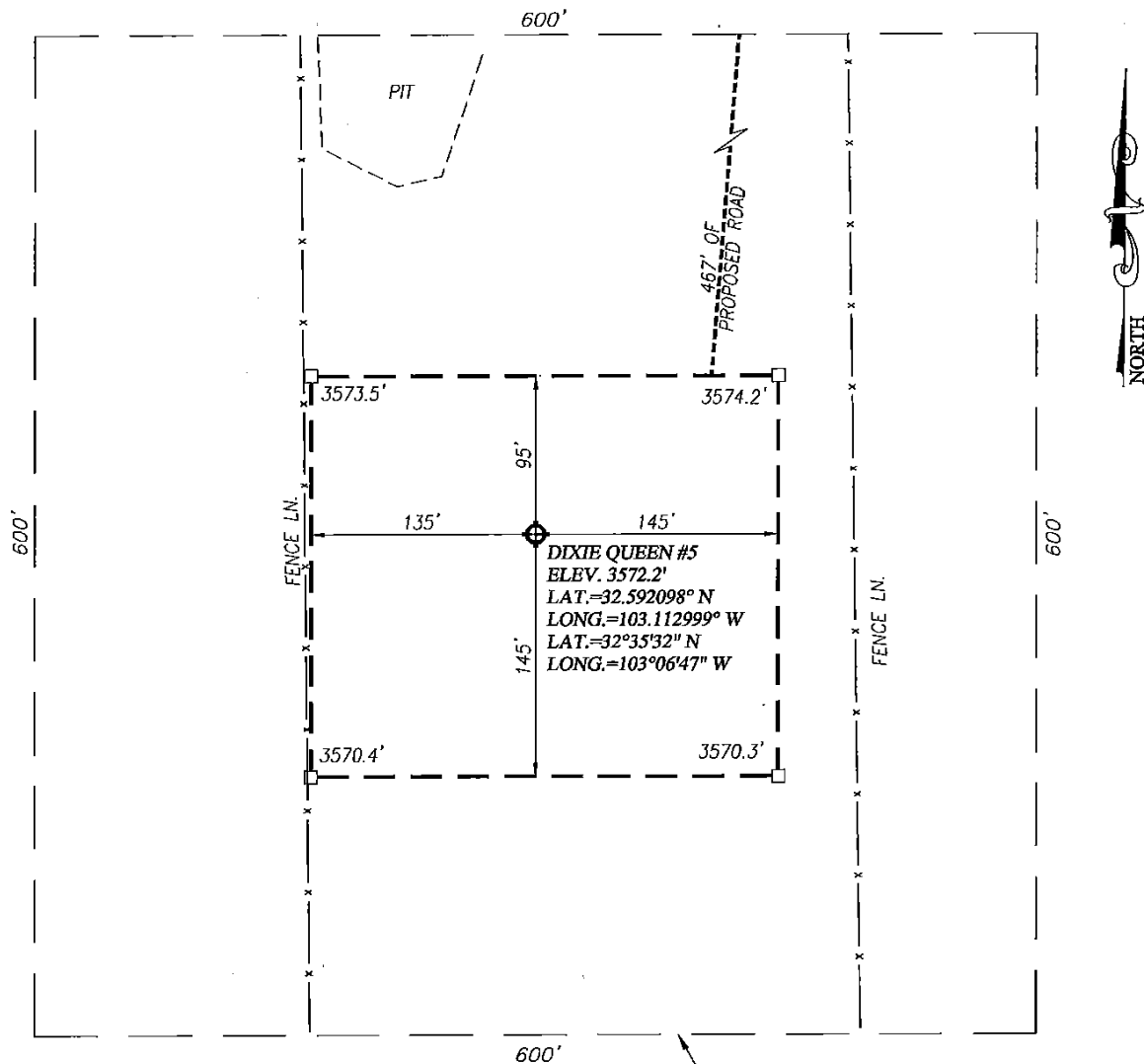
UL or lot No.	Section	Township	Range	Lot Idn	Feet from the	North/South line	Feet from the	East/West line	County
A	11	20-S	38-E		990	NORTH	990	EAST	LEA

Dedicated Acres	Joint or Infill	Consolidation Code	Order No.
<b>40</b>			

NO ALLOWABLE WILL BE ASSIGNED TO THIS COMPLETION UNTIL ALL INTERESTS HAVE BEEN CONSOLIDATED OR A NON-STANDARD UNIT HAS BEEN APPROVED BY THE DIVISION

<p>GEODETIC COORDINATES NAD 27 NME</p> <p>SURFACE LOCATION Y= 581273.2 N X= 875858.1 E</p> <p>LAT.=32.592098° N LONG.=103.112999° W</p> <p>LAT.=32°35'32" N LONG.=103°06'47" W</p> <p>BOTTOM HOLE LOCATION Y= 581271.5 N X= 875718.1 E</p>		<p><b>OPERATOR CERTIFICATION</b></p> <p>I hereby certify that the information herein is true and complete to the best of my knowledge and belief, and that this organization either owns a working interest or unleased mineral interest in the land including the proposed bottom hole location or has a right to drill this well at this location pursuant to a contract with an owner of such mineral or working interest, or to a voluntary pooling agreement or a compulsory pooling order heretofore entered by the division.</p> <p><i>Michelle Cooper</i> 10-13-14 Signature Date</p> <p><i>Michelle Cooper</i> Printed Name</p> <p><i>michelle.cooper@apachecorp.co</i> E-mail Address</p>
<p><b>CORNER COORDINATES TABLE</b></p> <p>A - Y= 582257.3 N, X= 875378.0 E B - Y= 582273.4 N, X= 876696.7 E C - Y= 580951.0 N, X= 876711.8 E D - Y= 580935.7 N, X= 875392.8 E</p>		<p><b>SURVEYOR CERTIFICATION</b></p> <p>I hereby certify that the well location shown on this plat was plotted from field notes of actual surveys made by me or under my supervision, and that the same is true and correct to the best of my belief.</p> <p>AUGUST 26, 2014</p> <p>Date of Survey</p> <p>Signature of Professional Surveyor: <i>Ronald J. Eidson</i></p> <p> 10/26/14</p> <p>Certification Number: 12641 Professional Surveyor: J. Eidson 3239</p> <p>LSL JWSC W.O.: 14.11.0893</p>



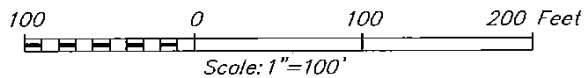


NOTE:  
1) SEE "LOCATION VERIFICATION MAP"  
FOR PROPOSED ROAD LOCATION.

ARCHAEOLOGICAL SURVEY BOUNDARY

#### DIRECTIONS TO DIXIE QUEEN #5:

FROM THE INTERSECTION OF ST. HWY. 18 AND STARLIGHT RD.  
GO EAST ON STARLIGHT RD. APPROX. 0.8 MILES TURN RIGHT  
AND FOLLOW PROPOSED ROAD SOUTH 97' ROAD BENDS LEFT  
SOUTHEAST 172' TO NORTHEAST PAD CORNER OF DIXIE QUEEN  
#6 FROM SOUTHEAST PAD CORNER FOLLOW PROPOSED ROAD  
467' TO THIS LOCATION.



## APACHE CORPORATION

**DIXIE QUEEN #5 WELL**  
**LOCATED 990 FEET FROM THE NORTH LINE**  
**AND 850 FEET FROM THE EAST LINE OF SECTION 11,**  
**TOWNSHIP 20 SOUTH, RANGE 38 EAST, N.M.P.M.,**  
**LEA COUNTY, NEW MEXICO**



PROVIDING SURVEYING SERVICES  
SINCE 1946  
**JOHN WEST SURVEYING COMPANY**

412 N. DAL PASO HOBBBS, N.M. 88240  
(575) 393-3117 www.jwsc.biz  
TBPLS# 10021000

Survey Date: 8/26/14

CAD Date: 9/9/14

Drawn By: LSL

W.O. No.: 14110893

Rev.:

Ref. W.O.:

Sheet 1 of 1

**District I**  
1625 N. French Dr., Hobbs, NM 88240  
Phone:(575) 393-6161 Fax:(575) 393-0720  
**District II**  
811 S. First St., Artesia, NM 88210  
Phone:(575) 748-1283 Fax:(575) 748-9720  
**District III**  
1000 Rio Brazos Rd., Aztec, NM 87410  
Phone:(505) 334-6178 Fax:(505) 334-6170  
**District IV**  
1220 S. St Francis Dr., Santa Fe, NM 87505  
Phone:(505) 476-3470 Fax:(505) 476-3482

**State of New Mexico**  
**Energy, Minerals and Natural Resources**  
**Oil Conservation Division**  
**1220 S. St Francis Dr.**  
**Santa Fe, NM 87505**

Form APD Comments

Permit 194053

**PERMIT COMMENTS**

Operator Name and Address: APACHE CORP [873] 303 Veterans Airpark Lane Midland, TX 79705	API Number: 30-025-42187
	Well: DIXIE QUEEN #005

Created By	Comment	Comment Date
------------	---------	--------------

**District I**  
 1625 N. French Dr., Hobbs, NM 88240  
 Phone:(575) 393-8161 Fax:(575) 393-0720  
**District II**  
 811 S. First St., Artesia, NM 88210  
 Phone:(575) 748-1283 Fax:(575) 748-9720  
**District III**  
 1000 Rio Brazos Rd., Aztec, NM 87410  
 Phone:(505) 334-6178 Fax:(505) 334-6170  
**District IV**  
 1220 S. St Francis Dr., Santa Fe, NM 87505  
 Phone:(505) 476-3470 Fax:(505) 476-3462

**State of New Mexico**  
**Energy, Minerals and Natural Resources**  
**Oil Conservation Division**  
**1220 S. St Francis Dr.**  
**Santa Fe, NM 87505**

Form APD Conditions

Permit 194053

**PERMIT CONDITIONS OF APPROVAL**

Operator Name and Address: APACHE CORP [873] 303 Veterans Airpark Lane Midland, TX 79705	API Number: 30-025-42187
	Well: DIXIE QUEEN #005

OCD Reviewer	Condition
pkautz	Will require a directional survey with the C-104
pkautz	Once the well is spud, to prevent ground water contamination through whole or partial conduits from the surface, the operator shall drill without interruption through the fresh water zone or zones and shall immediately set in cement the water protection string
pkautz	If using a pit for drilling and completion operations, must have an approved pit from prior to spudding the well.
pkautz	SURFACE & PRODUCTION CASING - Cement must circulate to surface