

District I
1625 N. French Dr., Hobbs, NM 88240
Phone:(505) 393-8161 Fax:(505) 393-0720
District II
811 S. First St., Artesia, NM 88210
Phone:(505) 748-1283 Fax:(505) 748-9720
District III
1000 Rio Brazos Rd., Aztec, NM 87410
Phone:(505) 334-8178 Fax:(505) 334-6170
District IV
1220 S. St Francis Dr., Santa Fe, NM 87505
Phone:(505) 476-3470 Fax:(505) 476-3482

State of New Mexico
Energy, Minerals and Natural Resources
Oil Conservation Division
1220 S. St Francis Dr.
Santa Fe, NM 87505

Form C-101
August 1, 2011
Permit 202099

APPLICATION FOR PERMIT TO DRILL, RE-ENTER, DEEPEN, PLUGBACK, OR ADD A ZONE

1. Operator Name and Address MATADOR PRODUCTION COMPANY One Lincoln Centre Dallas, TX 75240		2. OGRID Number 228937
4. Property Code 314391		3. API Number 30-025-42499
5. Property Name PICKARD 20 18 34 RN STATE		6. Well No. 124H

7. Surface Location

UL - Lot	P	Section	20	Township	18S	Range	34E	Lot Idn		Feet From	249	N/S Line	S	Feet From	350	E/W Line	E	County	Lea
----------	---	---------	----	----------	-----	-------	-----	---------	--	-----------	-----	----------	---	-----------	-----	----------	---	--------	-----

8. Proposed Bottom Hole Location

UL - Lot	A	Section	20	Township	18S	Range	34E	Lot Idn	A	Feet From	240	N/S Line	N	Feet From	350	E/W Line	E	County	Lea
----------	---	---------	----	----------	-----	-------	-----	---------	---	-----------	-----	----------	---	-----------	-----	----------	---	--------	-----

9. Pool Information

MESCALERO ESCARPE;BONE SPRING	45793
-------------------------------	-------

Additional Well Information

11. Work Type New Well	12. Well Type OIL	13. Cable/Rotary	14. Lease Type State	15. Ground Level Elevation 4045
16. Multiple N	17. Proposed Depth 14400	18. Formation 2nd Bone Spring Sand	19. Contractor	20. Spud Date 9/15/2015
Depth to Ground water		Distance from nearest fresh water well		Distance to nearest surface water

☒ We will be using a closed-loop system in lieu of lined pits

21. Proposed Casing and Cement Program

Type	Hole Size	Casing Size	Casing Weight/ft	Setting Depth	Sacks of Cement	Estimated TOC
Surf	17.5	13.375	54.5	1800	1800	0
Int1	12.25	9.625	36	5950	2400	0
Prod	8.75	5.5	20	14400	2400	4500

Casing/Cement Program: Additional Comments

--

22. Proposed Blowout Prevention Program

Type	Working Pressure	Test Pressure	Manufacturer
Annular	5000	5000	CAMERON
Double Ram	10000	10000	CAMERON
Pipe	10000	10000	CAMERON

23. I hereby certify that the information given above is true and complete to the best of my knowledge and belief. I further certify I have complied with 19.15.14.9 (A) NMAC <input checked="" type="checkbox"/> and/or 19.15.14.9 (B) NMAC <input checked="" type="checkbox"/> if applicable. Signature:	OIL CONSERVATION DIVISION
Printed Name: Electronically filed by Michael Ernest	Approved By: Paul Kautz
Title: Chief Engineer	Title: Geologist
Email Address: mernest@matadorresources.com	Approved Date: 3/31/2015 Expiration Date: 3/31/2017
Date: 3/30/2015 Phone: 972-371-5223	Conditions of Approval Attached

District I
1625 N. French Dr., Hobbs, NM 88240
Phone: (575) 393-6161 Fax: (575) 393-0720
District II
811 S. First St., Artesia, NM 88210
Phone: (575) 748-1283 Fax: (575) 748-9720
District III
1000 Rio Brazos Road, Aztec, NM 87410
Phone: (505) 334-6178 Fax: (505) 334-6170
District IV
1220 S. St. Francis Dr., Santa Fe, NM 87505
Phone: (505) 476-3460 Fax: (505) 476-3462

State of New Mexico
Energy, Minerals & Natural Resources
Department
OIL CONSERVATION DIVISION
1220 South St. Francis Dr.
Santa Fe, NM 87505

FORM C-102
Revised August 1, 2011
Submit one copy to appropriate
District Office

☐ AMENDED REPORT

WELL LOCATION AND ACREAGE DEDICATION PLAT

¹ API Number	² Pool Code	³ Pool Name
⁴ Property Code	⁵ Property Name PICKARD STATE 20-18S-34E RN	⁶ Well Number #124H
⁷ GRID No.	⁸ Operator Name MATADOR PRODUCTION COMPANY	⁹ Elevation 4045'

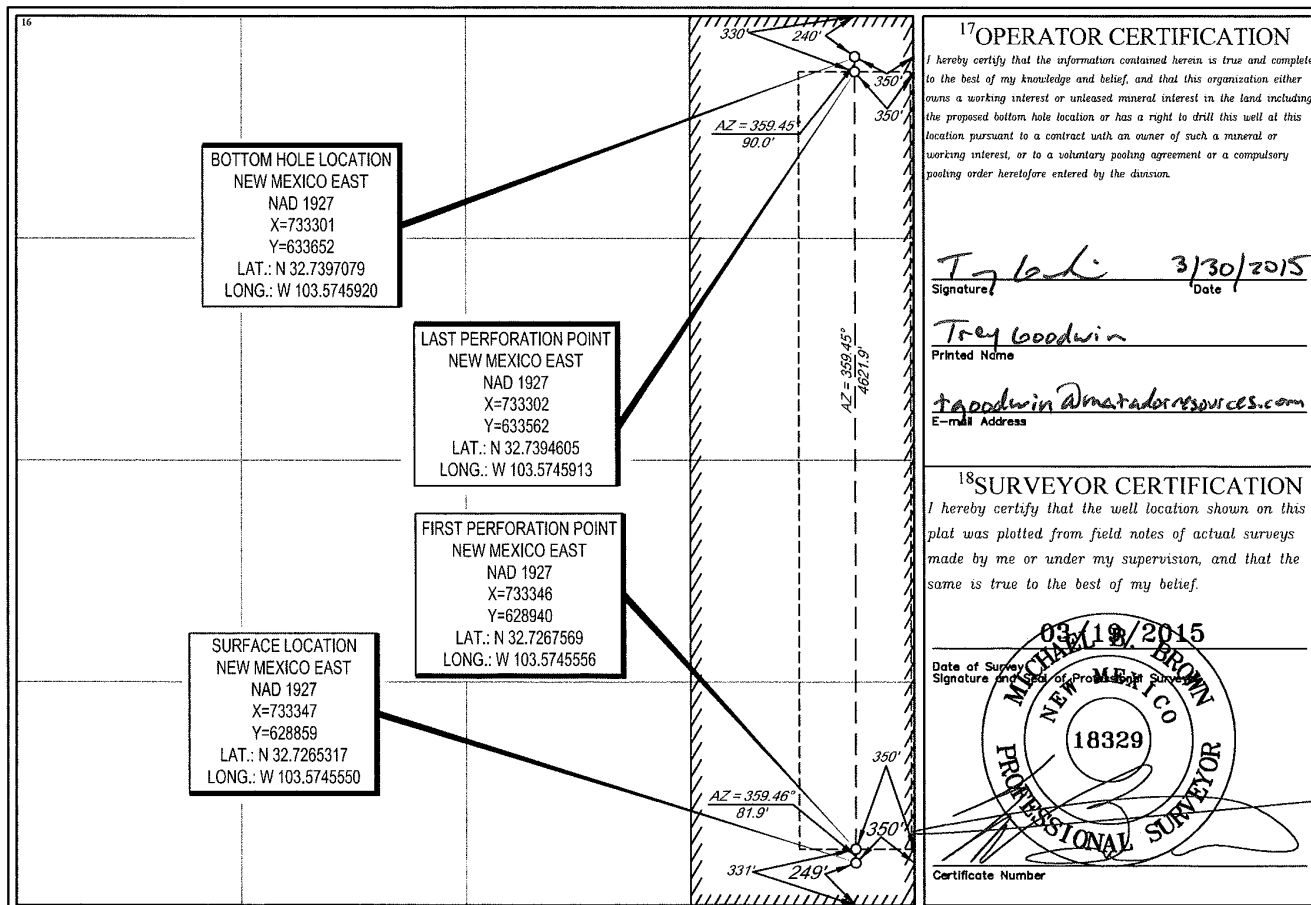
¹⁰Surface Location

UL or lot no.	Section	Township	Range	Lot Idn	Feet from the	North/South line	Feet from the	East/West line	County
P	20	18-S	34-E	-	249'	SOUTH	350'	EAST	LEA

UL or lot no.	Section	Township	Range	Lot Idn	Feet from the	North/South line	Feet from the	East/West line	County
A	20	18-S	34-E	-	240'	NORTH	350'	EAST	LEA

¹² Dedicated Acres 160.00	¹³ Joint or Infill	¹⁴ Consolidation Code	¹⁵ Order No.
---	-------------------------------	----------------------------------	-------------------------

No allowable will be assigned to this completion until all interests have been consolidated or a non-standard unit has been approved by the division.



District I
1625 N. French Dr., Hobbs, NM 88240
Phone:(575) 393-6161 Fax:(575) 393-0720
District II
811 S. First St., Artesia, NM 88210
Phone:(575) 748-1283 Fax:(575) 748-9720
District III
1000 Rio Brazos Rd., Aztec, NM 87410
Phone:(505) 334-6178 Fax:(505) 334-6170
District IV
1220 S. St Francis Dr., Santa Fe, NM 87505
Phone:(505) 476-3470 Fax:(505) 476-3482

State of New Mexico
Energy, Minerals and Natural Resources
Oil Conservation Division
1220 S. St Francis Dr.
Santa Fe, NM 87505

Form APD Comments

Permit 202099

PERMIT COMMENTS

Operator Name and Address: MATADOR PRODUCTION COMPANY [228937] One Lincoln Centre Dallas, TX 75240	API Number: 30-025-42499
	Well: PICKARD 20 18 34 RN STATE #124H

Created By	Comment	Comment Date
------------	---------	--------------

District I
 1625 N. French Dr., Hobbs, NM 88240
 Phone:(575) 393-8161 Fax:(575) 393-0720
District II
 811 S. First St., Artesia, NM 88210
 Phone:(575) 748-1283 Fax:(575) 748-9720
District III
 1000 Rio Brazos Rd., Aztec, NM 87410
 Phone:(505) 334-6178 Fax:(505) 334-6170
District IV
 1220 S. St Francis Dr., Santa Fe, NM 87505
 Phone:(505) 476-3470 Fax:(505) 476-3482

State of New Mexico
Energy, Minerals and Natural Resources
Oil Conservation Division
1220 S. St Francis Dr.
Santa Fe, NM 87505

Form APD Conditions

Permit 202099

PERMIT CONDITIONS OF APPROVAL

Operator Name and Address: MATADOR PRODUCTION COMPANY [228937] One Lincoln Centre Dallas, TX 75240		API Number: 30-025-42499
		Well: PICKARD 20 18 34 RN STATE #124H
OCD Reviewer	Condition	
pkautz	Will require a directional survey with the C-104	
pkautz	Once the well is spud, to prevent ground water contamination through whole or partial conduits from the surface, the operator shall drill without interruption through the fresh water zone or zones and shall immediately set in cement the water protection string	
pkautz	If using a pit for drilling and completion operations, must have an approved pit from prior to spudding the well.	
pkautz	1) SURFACE & INTERMEDIATE CASING - Cement must circulate to surface -- 2) PRODUCTION CASING - Cement must tie back into intermediate casing --	
pkautz	If cement does not circulate to surface, must run temperature survey or other log to determine top of cement	
pkautz	Surface casing must be set 25' below top of Rustler Anhydrite in order to seal off protectable water	