

District I
1625 N. French Dr., Hobbs, NM 88240
Phone:(505) 393-8161 Fax:(505) 393-0720
District II
811 S. First St., Artesia, NM 88210
Phone:(505) 748-1283 Fax:(505) 748-9720
District III
1000 Rio Brazos Rd., Aztec, NM 87410
Phone:(505) 334-8178 Fax:(505) 334-8170
District IV
1220 S. St Francis Dr., Santa Fe, NM 87505
Phone:(505) 476-3470 Fax:(505) 476-3482

State of New Mexico
Energy, Minerals and Natural Resources
Oil Conservation Division
1220 S. St Francis Dr.
Santa Fe, NM 87505

Form C-101
August 1, 2011
Permit 212324

APPLICATION FOR PERMIT TO DRILL, RE-ENTER, DEEPEN, PLUGBACK, OR ADD A ZONE

1. Operator Name and Address APACHE CORP 303 Veterans Airpark Lane Midland, TX 79705		2. OGRID Number 873
4. Property Code 315648		3. API Number 30-025-42941
5. Property Name CHIPOTLE STATE COM		6. Well No. 002H

7. Surface Location

UL - Lot	D	Section	29	Township	16S	Range	32E	Lot Idn	D	Feet From	195	N/S Line	N	Feet From	660	E/W Line	W	County	Lea
----------	---	---------	----	----------	-----	-------	-----	---------	---	-----------	-----	----------	---	-----------	-----	----------	---	--------	-----

8. Proposed Bottom Hole Location

UL - Lot	E	Section	32	Township	16S	Range	32E	Lot Idn	E	Feet From	2310	N/S Line	N	Feet From	660	E/W Line	W	County	Lea
----------	---	---------	----	----------	-----	-------	-----	---------	---	-----------	------	----------	---	-----------	-----	----------	---	--------	-----

9. Pool Information

MALJAMAR,PADDOCK, NORTH	97647
-------------------------	-------

Additional Well Information

11. Work Type New Well	12. Well Type OIL	13. Cable/Rotary	14. Lease Type State	15. Ground Level Elevation 4349
16. Multiple N	17. Proposed Depth 13500	18. Formation Blinbry	19. Contractor	20. Spud Date
Depth to Ground water		Distance from nearest fresh water well		Distance to nearest surface water

☒ We will be using a closed-loop system in lieu of lined pits

21. Proposed Casing and Cement Program

Type	Hole Size	Casing Size	Casing Weight/ft	Setting Depth	Sacks of Cement	Estimated TOC
Surf	17.5	13.375	48	1250	740	0
Int1	12.25	9.625	40	2500	565	0
Prod	8.5	7	29	5706	360	1500
Prod	8.5	5.5	20	13500	0	0

Casing/Cement Program: Additional Comments

Production Casing - we will be running a tapered string- 5.5" casing will not be cemented-running Packers Plus for this; DVT at 5706'.
--

22. Proposed Blowout Prevention Program

Type	Working Pressure	Test Pressure	Manufacturer
Annular	3000	2000	
Double Ram	5000	3000	

23. I hereby certify that the information given above is true and complete to the best of my knowledge and belief.

I further certify I have complied with 19.15.14.9 (A) NMAC ☒ and/or 19.15.14.9 (B) NMAC ☒, if applicable.

Signature:

Printed Name: Electronically filed by Bobby Smith

Title:

Email Address: bobby.smith@apachecorp.com

Date: 11/9/2015

Phone: 432-818-1020

OIL CONSERVATION DIVISION

Approved By: Paul Kautz

Title: Geologist

Approved Date: 11/10/2015

Expiration Date: 11/10/2017

Conditions of Approval Attached

☐ AMENDED REPORT

WELL LOCATION AND ACREAGE DEDICATION PLAT

¹ API Number		² Pool Code 97647	³ Pool Name Maljamar; PAD-BLI, North (97647) Pool	
⁴ Property Code	⁵ Property Name CHIPOTLE STATE COM			⁶ Well Number 2H
⁷ OGRID NO. 873	⁸ Operator Name APACHE CORPORATION			⁹ Elevation 4349'

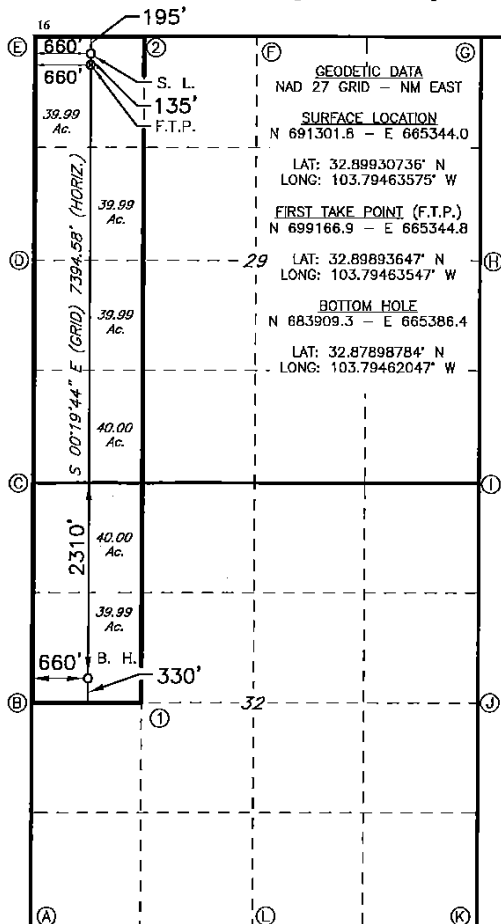
¹⁰ Surface Location

UL or lot no.	Section	Township	Range	Lot Idn	Feet from the	North/South line	Feet From the	East/West line	County
D	29	16S	32E		195	NORTH	660	WEST	LEA

" Bottom Hole Location If Different From Surface

UL or lot no. E	Section 32	Township 16S	Range 32E	Lot Idn	Feet from the 2310	North/South line NORTH	Feet from the	East/West line WEST	County LEA
12 Dedicated Acres 239.96	13 Joint or Infill	14 Consolidation Code		15 Order No.					

No allowable will be assigned to this completion until all interest have been consolidated or a non-standard unit has been approved by the division.



17 OPERATOR CERTIFICATION

I hereby certify that the information contained herein is true and complete to the best of my knowledge and belief, and that this organization either owns a working interest or unleased mineral interest in the land including the proposed bottom hole location or has a right to drill this well at this location pursuant to a contract with an owner of such a mineral or working interest, or to a voluntary pooling agreement or a compulsory pooling order, or heretofore entered by the division.

Signature Juan Blakemore Date 11-9-15

Susan Blakemore

Susan.blakemore@apache.org.com
E-mail Address

¹⁸ SURVEYOR CERTIFICATION

I hereby certify that the well location shown on this plat was plotted from field notes of actual surveys made by me or under my supervision, and that the same is true and correct to the best of my belief.

10-13-2015

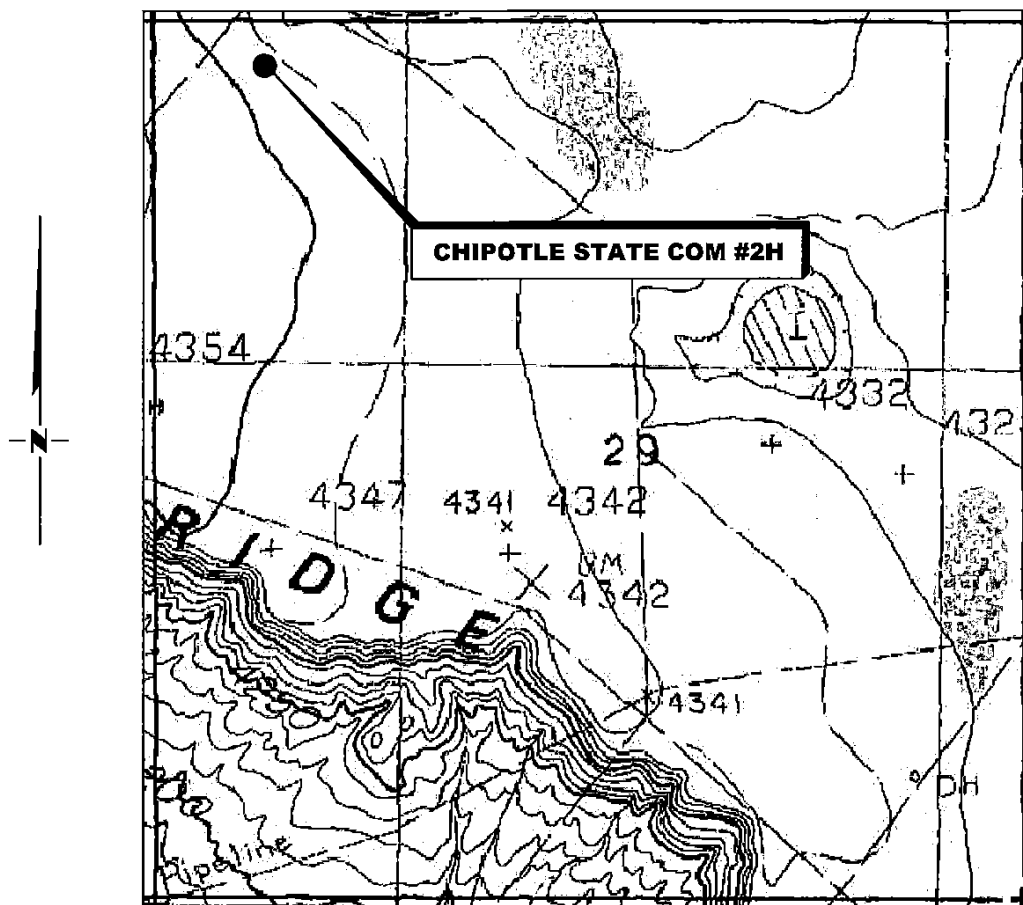
Date of Survey _____

Signature and Seal of Professional Surveyor

19680

Certificate Number

LOCATION VERIFICATION MAP



(Maljamar, NM, is located approx. 3.4 miles to the Southeast.)

**SECTION 29, TWP. 16 SOUTH, RGE. 32 EAST,
N. M. P. M., LEA CO., NEW MEXICO**

OPERATOR: Apache Corporation
LEASE: Chipotle State Com
WELL NO.: 2H
ELEVATION: 4349'

LOCATION: 195' FNL & 660' FWL
CONTOUR INTERVAL: 10'
USGS TOPO. SOURCE MAP:
Maljamar NE, NM (1985)

Firm No.: TX 10193838 NM 4655451

Copyright 2015 - All Rights Reserved

NO.	REVISION	DATE
JOB NO.:	LS1510562	
DWG. NO.:	1510562LVM	

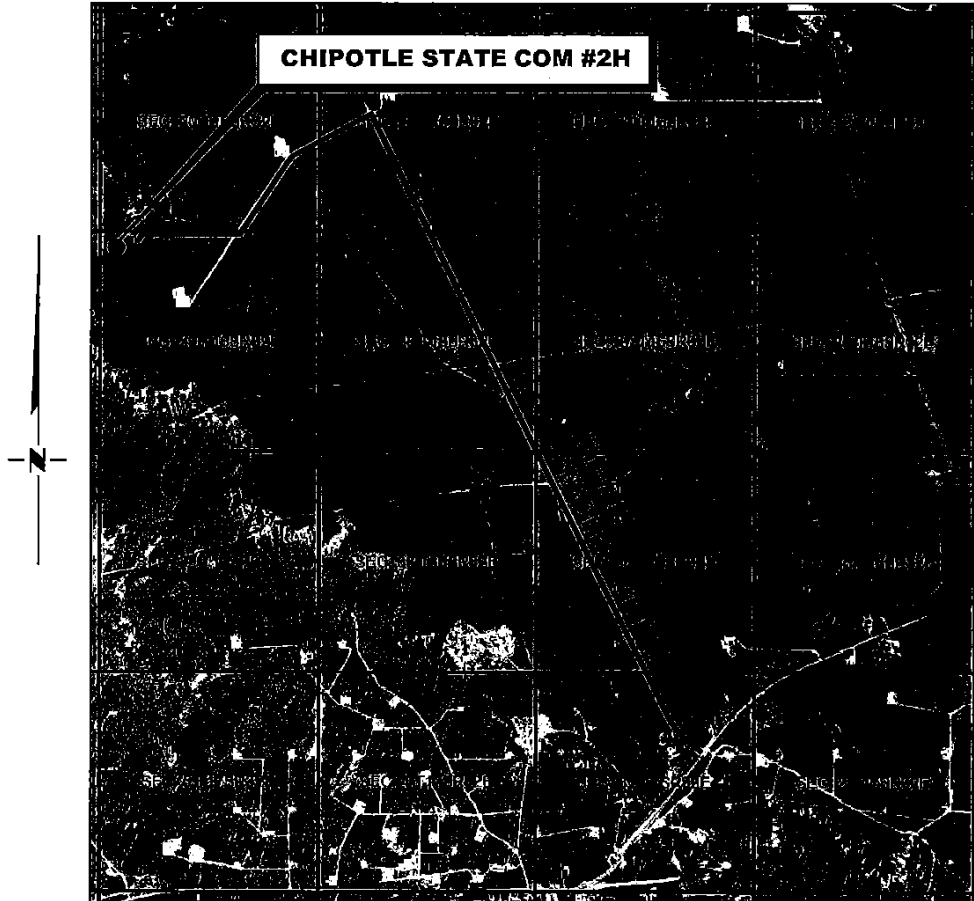
RRC

308 W. BROADWAY ST., HOBBS, NM 88240 (575) 964-8200

SCALE: 1000'
DATE: 10-13-2015
SURVEYED BY: BK/CG
DRAWN BY: LPS
APPROVED BY: RMH
SHEET : 1 OF 1

VICINITY MAP

NOT TO SCALE



*SECTION 29, TWP. 16 SOUTH, RGE. 32 EAST,
N. M. P. M., LEA CO., NEW MEXICO*

OPERATOR: Apache Corporation
LEASE: Chipotle State Com
WELL NO.: 2H

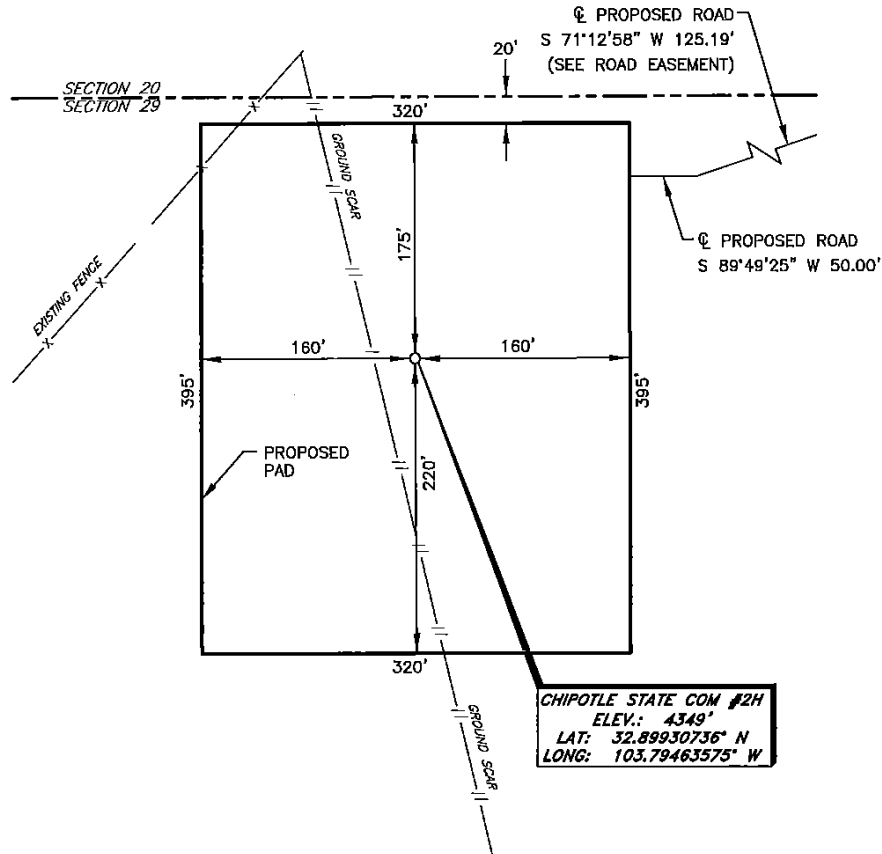
LOCATION: 195' FNL & 660' FWL
ELEVATION: 4349'

Firm No.: TX 10193838 NM 4655451

Copyright 2014 - All Rights Reserved

			<h1>RRC</h1>	SCALE: NTS	
				DATE: 10-13-2015	
				SURVEYED BY: BK/CG	
				DRAWN BY: LPS	
NO.	REVISION	DATE	APPROVED BY: RMH		
JOB NO.: LS1510562			SHEET : 1 OF 1		
DWG. NO.: 1510562VM			308 W. BROADWAY ST., HOBBS, NM 88240 (575) 964-8200		

APACHE CORPORATION
CHIPOTLE STATE COM #2H
(195' FNL & 660' FWL)
SECTION 29, T18S, R32E
N. M. P. M., LEA COUNTY, NEW MEXICO



DIRECTIONS TO LOCATION

From the intersection of U.S. Hwy. 82 and NM-249 (East Aberdeen St.)
Go Northwest on NM-249 approx. 3.3 miles to a lease road on the left;
Turn left and go Southwest approx. 0.8 miles to a proposed road on the right;
Turn right on proposed road and go West approx. 0.4 miles;
Turn left and go Southwest approx. 125 feet;
Turn right and go West approx. 210 feet to location on the left.

SCALE: 1" = 100'
0 50 100
BEARINGS ARE
NAD 27 GRID - NM EAST
DISTANCES ARE GROUND

Firm No.: TX 10193838 NM 4655451

Copyright 2014 - All Rights Reserved

NO.	REVISION	DATE
JOB NO.:	LS1510562	
DWG. NO.:	1510562PAD	

RRC

308 W. BROADWAY ST., HOBBS, NM 88240 (575) 964-8200

SCALE: 1" = 100'
DATE: 10-13-2015
SURVEYED BY: BK/CG
DRAWN BY: LPS
APPROVED BY: RMH
SHEET: 1 OF 1

District I
1625 N. French Dr., Hobbs, NM 88240
Phone:(575) 393-6161 Fax:(575) 393-0720
District II
811 S. First St., Artesia, NM 88210
Phone:(575) 748-1283 Fax:(575) 748-9720
District III
1000 Rio Brazos Rd., Aztec, NM 87410
Phone:(505) 334-6178 Fax:(505) 334-6170
District IV
1220 S. St Francis Dr., Santa Fe, NM 87505
Phone:(505) 476-3470 Fax:(505) 476-3462

State of New Mexico
Energy, Minerals and Natural Resources
Oil Conservation Division
1220 S. St Francis Dr.
Santa Fe, NM 87505

Form APD Comments

Permit 212324

PERMIT COMMENTS

Operator Name and Address: APACHE CORP [873] 303 Veterans Airpark Lane Midland, TX 79705	API Number: 30-025-42941
	Well: CHIPOTLE STATE COM #002H

Created By	Comment	Comment Date
------------	---------	--------------

District I
 1625 N. French Dr., Hobbs, NM 88240
 Phone:(575) 393-8161 Fax:(575) 393-0720
District II
 811 S. First St., Artesia, NM 88210
 Phone:(575) 748-1283 Fax:(575) 748-9720
District III
 1000 Rio Brazos Rd., Aztec, NM 87410
 Phone:(505) 334-8178 Fax:(505) 334-6170
District IV
 1220 S. St Francis Dr., Santa Fe, NM 87505
 Phone:(505) 476-3470 Fax:(505) 476-3482

State of New Mexico
Energy, Minerals and Natural Resources
Oil Conservation Division
1220 S. St Francis Dr.
Santa Fe, NM 87505

Form APD Conditions

Permit 212324

PERMIT CONDITIONS OF APPROVAL

Operator Name and Address: APACHE CORP [873] 303 Veterans Airpark Lane Midland, TX 79705	API Number: 30-025-42941
	Well: CHIPOTLE STATE COM #002H

OCD Reviewer	Condition
pkautz	Will require a directional survey with the C-104
pkautz	Once the well is spud, to prevent ground water contamination through whole or partial conduits from the surface, the operator shall drill without interruption through the fresh water zone or zones and shall immediately set in cement the water protection string
pkautz	If using a pit for drilling and completion operations, must have an approved pit from prior to spudding the well.
pkautz	1) SURFACE & INTERMEDIATE CASING - Cement must circulate to surface -- 2) PRODUCTION CASING - Cement must tie back into intermediate casing --
pkautz	If cement does not circulate to surface, must run temperature survey or other log to determine top of cement
pkautz	Surface casing must be set 25' below top of Rustler Anhydrite in order to seal off protectable water
pkautz	Must notify OCD Hobbs Office if lost circulation is encountered at 575-370-3186
pkautz	1) Must notify OCD Hobbs Office prior to running Stage Tool at 575-370-3186 2) If using Stage Tool on Surface casing, Stage Tool must be set greater than 350' from surface and a minimum of 200 feet above surface shoe. 3) When using a Stage Tool on Intermediate or Production Casing Stage must be a minimum of 50 feet below previous casing shoe.