

District I
1625 N. French Dr., Hobbs, NM 88240
District II
811 S. First St., Artesia, NM 88210
District III
1000 Rio Brazos Road, Aztec, NM 87410
District IV
1220 S. St. Francis Dr., Santa Fe, NM 87505

State of New Mexico
Energy Minerals and Natural Resources
Department
Oil Conservation Division
1220 South St. Francis Dr.
Santa Fe, NM 87505

Form C-144
Revised June 6, 2013

For temporary pits, below-grade tanks, and multi-well fluid management pits, submit to the appropriate NMOCD District Office.
For permanent pits submit to the Santa Fe Environmental Bureau office and provide a copy to the appropriate NMOCD District Office.

Pit, Below-Grade Tank, or
Proposed Alternative Method Permit or Closure Plan Application

Type of action: ☐ Below grade tank registration
☐ Permit of a pit or proposed alternative method
☒ Closure of a pit, below-grade tank, or proposed alternative method
☐ Modification to an existing permit/or registration
☐ Closure plan only submitted for an existing permitted or non-permitted pit, below-grade tank, or proposed alternative method

Instructions: Please submit one application (Form C-144) per individual pit, below-grade tank or alternative request

Please be advised that approval of this request does not relieve the operator of liability should operations result in pollution of surface water, ground water or the environment. Nor does approval relieve the operator of its responsibility to comply with any other applicable governmental authority's rules, regulations or ordinances.

1.
Operator: **WHITING OIL & GAS CORPORATION OGRID #: 25078**
Address: **400 W ILLINOIS STE 1300 MIDLAND, TEXAS 79701**
Facility or well name: **STATE 2028 16 WELL # 1**
API Number: **30-021-20630** OCD Permit Number: 186169
U/L or Qtr/Qtr G Section 16 Township 20N Range 28E County: **HARDING COUNTY**
Center of Proposed Design: Latitude 35.965136 Longitude -103.968225 NAD: ☐ 1927 ☐ 1983
Surface Owner: ☐ Federal ☒ State ☐ Private ☐ Tribal Trust or Indian Allotment

2.
☒ **Pit:** Subsection F, G or J of 19.15.17.11 NMAC
Temporary: ☒ Drilling ☐ Workover
☐ Permanent ☐ Emergency ☐ Cavitation ☐ P&A ☐ Multi-Well Fluid Management Low Chloride Drilling Fluid ☐ yes ☐ no
☐ Lined ☐ Unlined Liner type: Thickness _____ mil ☐ LLDPE ☐ HDPE ☐ PVC ☐ Other _____
☐ String-Reinforced
Liner Seams: ☐ Welded ☐ Factory ☐ Other _____ Volume: _____ bbl Dimensions: L _____ x W _____ x D _____

3.
☐ **Below-grade tank:** Subsection I of 19.15.17.11 NMAC
Volume: _____ bbl Type of fluid: _____
Tank Construction material: _____
☐ Secondary containment with leak detection ☐ Visible sidewalls, liner, 6-inch lift and automatic overflow shut-off
☐ Visible sidewalls and liner ☐ Visible sidewalls only ☐ Other _____
Liner type: Thickness _____ mil ☐ HDPE ☐ PVC ☐ Other _____

4.
☐ **Alternative Method:**
Submittal of an exception request is required. Exceptions must be submitted to the Santa Fe Environmental Bureau office for consideration of approval.

5.
Fencing: Subsection D of 19.15.17.11 NMAC (Applies to permanent pits, temporary pits, and below-grade tanks)
☐ Chain link, six feet in height, two strands of barbed wire at top (Required if located within 1000 feet of a permanent residence, school, hospital, institution or church)
☐ Four foot height, four strands of barbed wire evenly spaced between one and four feet
☐ Alternate. Please specify _____

6.

Netting: Subsection E of 19.15.17.11 NMAC (*Applies to permanent pits and permanent open top tanks*)

☐ Screen ☐ Netting ☐ Other _____

☐ Monthly inspections (If netting or screening is not physically feasible)

7.

Signs: Subsection C of 19.15.17.11 NMAC

☐ 12"x 24", 2" lettering, providing Operator's name, site location, and emergency telephone numbers

☐ Signed in compliance with 19.15.16.8 NMAC

8.

Variances and Exceptions:

Justifications and/or demonstrations of equivalency are required. Please refer to 19.15.17 NMAC for guidance.

Please check a box if one or more of the following is requested, if not leave blank:

☐ Variance(s): Requests must be submitted to the appropriate division district for consideration of approval.

☐ Exception(s): Requests must be submitted to the Santa Fe Environmental Bureau office for consideration of approval.

9.

Siting Criteria (regarding permitting): 19.15.17.10 NMAC

Instructions: The applicant must demonstrate compliance for each siting criteria below in the application. Recommendations of acceptable source material are provided below. Siting criteria does not apply to drying pads or above-grade tanks.

General siting

Ground water is less than 25 feet below the bottom of a low chloride temporary pit or below-grade tank.

- ☐ NM Office of the State Engineer - iWATERS database search; ☐ USGS; ☐ Data obtained from nearby wells

☐ Yes ☐ No

☐ NA

Ground water is less than 50 feet below the bottom of a Temporary pit, permanent pit, or Multi-Well Fluid Management pit.

NM Office of the State Engineer - iWATERS database search; USGS; Data obtained from nearby wells

☐ Yes ☐ No

☐ NA

Within incorporated municipal boundaries or within a defined municipal fresh water well field covered under a municipal ordinance adopted pursuant to NMSA 1978, Section 3-27-3, as amended. **(Does not apply to below grade tanks)**

- Written confirmation or verification from the municipality; Written approval obtained from the municipality

☐ Yes ☐ No

Within the area overlying a subsurface mine. **(Does not apply to below grade tanks)**

- Written confirmation or verification or map from the NM EMNRD-Mining and Mineral Division

☐ Yes ☐ No

Within an unstable area. **(Does not apply to below grade tanks)**

- Engineering measures incorporated into the design; NM Bureau of Geology & Mineral Resources; USGS; NM Geological Society; Topographic map

☐ Yes ☐ No

Within a 100-year floodplain. **(Does not apply to below grade tanks)**

- FEMA map

☐ Yes ☐ No

Below Grade Tanks

Within 100 feet of a continuously flowing watercourse, significant watercourse, lake bed, sinkhole, wetland or playa lake (measured from the ordinary high-water mark).

- Topographic map; Visual inspection (certification) of the proposed site

☐ Yes ☐ No

Within 200 horizontal feet of a spring or a fresh water well used for public or livestock consumption;

- NM Office of the State Engineer - iWATERS database search; Visual inspection (certification) of the proposed site

☐ Yes ☐ No

Temporary Pit using Low Chloride Drilling Fluid (maximum chloride content 15,000 mg/liter)

Within 100 feet of a continuously flowing watercourse, or any other significant watercourse or within 200 feet of any lakebed, sinkhole, or playa lake (measured from the ordinary high-water mark). (Applies to low chloride temporary pits.)

- Topographic map; Visual inspection (certification) of the proposed site

☐ Yes ☐ No

Within 300 feet from a occupied permanent residence, school, hospital, institution, or church in existence at the time of initial application.

- Visual inspection (certification) of the proposed site; Aerial photo; Satellite image

☐ Yes ☐ No

Within 200 horizontal feet of a spring or a private, domestic fresh water well used by less than five households for domestic or stock watering purposes, or 300feet of any other fresh water well or spring, in existence at the time of the initial application.

NM Office of the State Engineer - iWATERS database search; Visual inspection (certification) of the proposed site

☐ Yes ☐ No

Within 100 feet of a wetland.

- US Fish and Wildlife Wetland Identification map; Topographic map; Visual inspection (certification) of the proposed site

☐ Yes ☐ No

Temporary Pit Non-low chloride drilling fluid

Within 300 feet of a continuously flowing watercourse, or any other significant watercourse, or within 200 feet of any lakebed, sinkhole, or playa lake (measured from the ordinary high-water mark).

- Topographic map; Visual inspection (certification) of the proposed site

☐ Yes ☐ No

Within 300 feet from a permanent residence, school, hospital, institution, or church in existence at the time of initial application.

- Visual inspection (certification) of the proposed site; Aerial photo; Satellite image

☐ Yes ☐ No

Within 500 horizontal feet of a spring or a private, domestic fresh water well used by less than five households for domestic or stock watering purposes, or 1000 feet of any other fresh water well or spring, in the existence at the time of the initial application;

- NM Office of the State Engineer - iWATERS database search; Visual inspection (certification) of the proposed site

☐ Yes ☐ No

Within 300 feet of a wetland.

- US Fish and Wildlife Wetland Identification map; Topographic map; Visual inspection (certification) of the proposed site

☐ Yes ☐ No

Permanent Pit or Multi-Well Fluid Management Pit

Within 300 feet of a continuously flowing watercourse, or 200 feet of any other significant watercourse, or lakebed, sinkhole, or playa lake (measured from the ordinary high-water mark).

- Topographic map; Visual inspection (certification) of the proposed site

☐ Yes ☐ No

Within 1000 feet from a permanent residence, school, hospital, institution, or church in existence at the time of initial application.

- Visual inspection (certification) of the proposed site; Aerial photo; Satellite image

☐ Yes ☐ No

Within 500 horizontal feet of a spring or a fresh water well used for domestic or stock watering purposes, in existence at the time of initial application.

- NM Office of the State Engineer - iWATERS database search; Visual inspection (certification) of the proposed site

☐ Yes ☐ No

Within 500 feet of a wetland.

- US Fish and Wildlife Wetland Identification map; Topographic map; Visual inspection (certification) of the proposed site

☐ Yes ☐ No

10.

Temporary Pits, Emergency Pits, and Below-grade Tanks Permit Application Attachment Checklist: Subsection B of 19.15.17.9 NMAC

Instructions: Each of the following items must be attached to the application. Please indicate, by a check mark in the box, that the documents are attached.

- ☐ Hydrogeologic Report (Below-grade Tanks) - based upon the requirements of Paragraph (4) of Subsection B of 19.15.17.9 NMAC
- ☐ Hydrogeologic Data (Temporary and Emergency Pits) - based upon the requirements of Paragraph (2) of Subsection B of 19.15.17.9 NMAC
- ☐ Siting Criteria Compliance Demonstrations - based upon the appropriate requirements of 19.15.17.10 NMAC
- ☐ Design Plan - based upon the appropriate requirements of 19.15.17.11 NMAC
- ☐ Operating and Maintenance Plan - based upon the appropriate requirements of 19.15.17.12 NMAC
- ☐ Closure Plan (Please complete Boxes 14 through 18, if applicable) - based upon the appropriate requirements of Subsection C of 19.15.17.9 NMAC and 19.15.17.13 NMAC

☐ Previously Approved Design (attach copy of design) API Number: _____ or Permit Number: _____

11.

Multi-Well Fluid Management Pit Checklist: Subsection B of 19.15.17.9 NMAC

Instructions: Each of the following items must be attached to the application. Please indicate, by a check mark in the box, that the documents are attached.

- ☐ Design Plan - based upon the appropriate requirements of 19.15.17.11 NMAC
- ☐ Operating and Maintenance Plan - based upon the appropriate requirements of 19.15.17.12 NMAC
- ☐ A List of wells with approved application for permit to drill associated with the pit.
- ☐ Closure Plan (Please complete Boxes 14 through 18, if applicable) - based upon the appropriate requirements of Subsection C of 19.15.17.9 NMAC and 19.15.17.13 NMAC
- ☐ Hydrogeologic Data - based upon the requirements of Paragraph (4) of Subsection B of 19.15.17.9 NMAC
- ☐ Siting Criteria Compliance Demonstrations - based upon the appropriate requirements of 19.15.17.10 NMAC

☐ Previously Approved Design (attach copy of design) API Number: _____ or Permit Number: _____

12.

Permanent Pits Permit Application Checklist: Subsection B of 19.15.17.9 NMAC

Instructions: Each of the following items must be attached to the application. Please indicate, by a check mark in the box, that the documents are attached.

- ☐ Hydrogeologic Report - based upon the requirements of Paragraph (1) of Subsection B of 19.15.17.9 NMAC
☐ Siting Criteria Compliance Demonstrations - based upon the appropriate requirements of 19.15.17.10 NMAC
☐ Climatological Factors Assessment
☐ Certified Engineering Design Plans - based upon the appropriate requirements of 19.15.17.11 NMAC
☐ Dike Protection and Structural Integrity Design - based upon the appropriate requirements of 19.15.17.11 NMAC
☐ Leak Detection Design - based upon the appropriate requirements of 19.15.17.11 NMAC
☐ Liner Specifications and Compatibility Assessment - based upon the appropriate requirements of 19.15.17.11 NMAC
☐ Quality Control/Quality Assurance Construction and Installation Plan
☐ Operating and Maintenance Plan - based upon the appropriate requirements of 19.15.17.12 NMAC
☐ Freeboard and Overtopping Prevention Plan - based upon the appropriate requirements of 19.15.17.11 NMAC
☐ Nuisance or Hazardous Odors, including H₂S, Prevention Plan
☐ Emergency Response Plan
☐ Oil Field Waste Stream Characterization
☐ Monitoring and Inspection Plan
☐ Erosion Control Plan
☐ Closure Plan - based upon the appropriate requirements of Subsection C of 19.15.17.9 NMAC and 19.15.17.13 NMAC

13.

Proposed Closure: 19.15.17.13 NMAC

Instructions: Please complete the applicable boxes, Boxes 14 through 18, in regards to the proposed closure plan.

- Type: ☐ Drilling ☐ Workover ☐ Emergency ☐ Cavitation ☐ P&A ☐ Permanent Pit ☐ Below-grade Tank ☐ Multi-well Fluid Management Pit
☐ Alternative
- Proposed Closure Method: ☐ Waste Excavation and Removal
☐ Waste Removal (Closed-loop systems only)
☐ On-site Closure Method (Only for temporary pits and closed-loop systems)
☐ In-place Burial ☐ On-site Trench Burial
☐ Alternative Closure Method

14.

Waste Excavation and Removal Closure Plan Checklist: (19.15.17.13 NMAC) **Instructions:** Each of the following items must be attached to the closure plan. Please indicate, by a check mark in the box, that the documents are attached.

- ☐ Protocols and Procedures - based upon the appropriate requirements of 19.15.17.13 NMAC
☐ Confirmation Sampling Plan (if applicable) - based upon the appropriate requirements of Subsection C of 19.15.17.13 NMAC
☐ Disposal Facility Name and Permit Number (for liquids, drilling fluids and drill cuttings)
☐ Soil Backfill and Cover Design Specifications - based upon the appropriate requirements of Subsection H of 19.15.17.13 NMAC
☐ Re-vegetation Plan - based upon the appropriate requirements of Subsection H of 19.15.17.13 NMAC
☐ Site Reclamation Plan - based upon the appropriate requirements of Subsection H of 19.15.17.13 NMAC

15.

Siting Criteria (regarding on-site closure methods only): 19.15.17.10 NMAC

Instructions: Each siting criteria requires a demonstration of compliance in the closure plan. Recommendations of acceptable source material are provided below. Requests regarding changes to certain siting criteria require justifications and/or demonstrations of equivalency. Please refer to 19.15.17.10 NMAC for guidance.

Ground water is less than 25 feet below the bottom of the buried waste. - NM Office of the State Engineer - iWATERS database search; USGS; Data obtained from nearby wells	<input type="checkbox"/> Yes <input type="checkbox"/> No <input type="checkbox"/> NA
Ground water is between 25-50 feet below the bottom of the buried waste - NM Office of the State Engineer - iWATERS database search; USGS; Data obtained from nearby wells	<input type="checkbox"/> Yes <input type="checkbox"/> No <input type="checkbox"/> NA
Ground water is more than 100 feet below the bottom of the buried waste. - NM Office of the State Engineer - iWATERS database search; USGS; Data obtained from nearby wells	<input type="checkbox"/> Yes <input type="checkbox"/> No <input type="checkbox"/> NA
Within 100 feet of a continuously flowing watercourse, or 200 feet of any other significant watercourse, lakebed, sinkhole, or playa lake (measured from the ordinary high-water mark). - Topographic map; Visual inspection (certification) of the proposed site	<input type="checkbox"/> Yes <input type="checkbox"/> No
Within 300 feet from a permanent residence, school, hospital, institution, or church in existence at the time of initial application. - Visual inspection (certification) of the proposed site; Aerial photo; Satellite image	<input type="checkbox"/> Yes <input type="checkbox"/> No
Within 300 horizontal feet of a private, domestic fresh water well or spring used for domestic or stock watering purposes, in existence at the time of initial application. - NM Office of the State Engineer - iWATERS database; Visual inspection (certification) of the proposed site	<input type="checkbox"/> Yes <input type="checkbox"/> No
Written confirmation or verification from the municipality; Written approval obtained from the municipality	<input type="checkbox"/> Yes <input type="checkbox"/> No
Within 300 feet of a wetland. US Fish and Wildlife Wetland Identification map; Topographic map; Visual inspection (certification) of the proposed site	<input type="checkbox"/> Yes <input type="checkbox"/> No
Within incorporated municipal boundaries or within a defined municipal fresh water well field covered under a municipal ordinance	

adopted pursuant to NMSA 1978, Section 3-27-3, as amended. - Written confirmation or verification from the municipality; Written approval obtained from the municipality	<input type="checkbox"/> Yes <input type="checkbox"/> No
Within the area overlying a subsurface mine. - Written confirmation or verification or map from the NM EMNRD-Mining and Mineral Division	<input type="checkbox"/> Yes <input type="checkbox"/> No
Within an unstable area. - Engineering measures incorporated into the design; NM Bureau of Geology & Mineral Resources; USGS; NM Geological Society; Topographic map	<input type="checkbox"/> Yes <input type="checkbox"/> No
Within a 100-year floodplain. - FEMA map	<input type="checkbox"/> Yes <input type="checkbox"/> No

16. **On-Site Closure Plan Checklist:** (19.15.17.13 NMAC) *Instructions: Each of the following items must be attached to the closure plan. Please indicate, by a check mark in the box, that the documents are attached.*

☐ Siting Criteria Compliance Demonstrations - based upon the appropriate requirements of 19.15.17.10 NMAC
☐ Proof of Surface Owner Notice - based upon the appropriate requirements of Subsection E of 19.15.17.13 NMAC
☐ Construction/Design Plan of Burial Trench (if applicable) based upon the appropriate requirements of Subsection K of 19.15.17.11 NMAC
☐ Construction/Design Plan of Temporary Pit (for in-place burial of a drying pad) - based upon the appropriate requirements of 19.15.17.11 NMAC
☐ Protocols and Procedures - based upon the appropriate requirements of 19.15.17.13 NMAC
☐ Confirmation Sampling Plan (if applicable) - based upon the appropriate requirements of 19.15.17.13 NMAC
☐ Waste Material Sampling Plan - based upon the appropriate requirements of 19.15.17.13 NMAC
☐ Disposal Facility Name and Permit Number (for liquids, drilling fluids and drill cuttings or in case on-site closure standards cannot be achieved)
☐ Soil Cover Design - based upon the appropriate requirements of Subsection H of 19.15.17.13 NMAC
☐ Re-vegetation Plan - based upon the appropriate requirements of Subsection H of 19.15.17.13 NMAC
☐ Site Reclamation Plan - based upon the appropriate requirements of Subsection H of 19.15.17.13 NMAC

17. **Operator Application Certification:**

I hereby certify that the information submitted with this application is true, accurate and complete to the best of my knowledge and belief.

Name (Print): _____ Title: _____

Signature: _____ Date: _____

e-mail address: _____ Telephone: _____

18. **OCD Approval:** ☐ Permit Application (including closure plan) ☒ Closure Plan (only) ☐ OCD Conditions (see attachment)

OCD Representative Signature: *[Signature]* Approval Date: 6/18/15

Title: Engineer OCD Permit Number: _____

19. **Closure Report (required within 60 days of closure completion):** 19.15.17.13 NMAC

Instructions: Operators are required to obtain an approved closure plan prior to implementing any closure activities and submitting the closure report. The closure report is required to be submitted to the division within 60 days of the completion of the closure activities. Please do not complete this section of the form until an approved closure plan has been obtained and the closure activities have been completed.

☒ Closure Completion Date: 05/14/2015

20. **Closure Method:**

☐ Waste Excavation and Removal ☒ On-Site Closure Method ☒ Alternative Closure Method ☐ Waste Removal (Closed-loop systems only)
☒ If different from approved plan, please explain. Amended original C-144 plan to Onsite Trench Burial which was approved 3/26/15

21. **Closure Report Attachment Checklist:** *Instructions: Each of the following items must be attached to the closure report. Please indicate, by a check mark in the box, that the documents are attached.*

☒ Proof of Closure Notice (surface owner and division)
☒ Proof of Deed Notice (required for on-site closure for private land only)
☒ Plot Plan (for on-site closures and temporary pits)
☒ Confirmation Sampling Analytical Results (if applicable)
☒ Waste Material Sampling Analytical Results (required for on-site closure)
☐ Disposal Facility Name and Permit Number
☒ Soil Backfilling and Cover Installation
☒ Re-vegetation Application Rates and Seeding Technique
☒ Site Reclamation (Photo Documentation)

On-site Closure Location: Latitude 35.96525 Longitude -103.96852 NAD: ☒ 1927 ☐ 1983

Operator Closure Certification:

I hereby certify that the information and attachments submitted with this closure report is true, accurate and complete to the best of my knowledge and belief. I also certify that the closure complies with all applicable closure requirements and conditions specified in the approved closure plan.

Name (Print): KAY MADDOX Title: REGULATORY SUPERVISOR

Signature: Kay Maddox Date: 05/23/2015

e-mail address: KAY.MADDOX@WHITING.COM Telephone: 432.686.6709

**WHITING OIL AND GAS CORPORATION
PIT CLOSURE REPORT**

STATE 2028 16 Well #1
API NO 30-021-20630

- 1) The pit will be closed within six (6) months from the date that the drilling or workover rig is released. If necessary, the division district office may grant an extension not to exceed three (3) months.

The Drlg rig was released 09/04/2014 after drilling this well –attempted to close pit in February 2015. However due to a change in the mud system while drilling this well (which resulted in an increase of waste material), Whiting was unable to close this pit in-place because there would have been a humped up cover over it once the required 4 ft of topsoil cover was in place. On 2/16/2015 Whiting requested an extension and to amend the C-144 to close this drilling pit by the onsite trench method. Request was approved March 26, 2015.

- 2) Surface Owners will be notified by Certified mail at least 72 hours but not more than one week prior to closure of the Temporary pit. The notice shall include well name, API number and location.

Reference attached notification

- 3) The Appropriate Division District Office (OCD) will be notified verbally and in writing at least 72 hours but not more than one week prior to closure of the Temporary pit. The notice shall include well name, API number and location.

NMOCD was notified via email – reference attached copy of email

- 4) If on site burial is on PRIVATE LAND, Whiting will file a deed notice identifying the exact location of the onsite burial with the county clerk in county where onsite burial occurs

Certified Recorded Deed Notice attached even tho this is State land.

- 5) All liquids from the pit will be removed prior to closure. Liquids will be disposed of at the Sundance Services, Inc. Parabo Disposal Facility (Permit No. 010003), unless they are recycled, reused, or reclaimed in a division district office-approved manner.

Liquids from pit evaporated, no removal was required.

- 6) The pit will be stabilized with clean non-waste containing earthen material with a ratio no more then 3:1

Pit was stabilized with non-waste containing earthen material in order to achieve the solidification process. The solidification process was accomplished by using a combination of natural drying and Mechanically mixing. Pit contents were mixed with non-waste, earthen material to a consistency that is deemed safe and stable. The mixing ratio consisted of approximately 3 parts clean soil to 1 part pit contents.

- 7) After stabilization, the contents of the pit will be tested to determine whether concentrations are below standards. A five-point composite sample will be collected. The samples will be sent to an approved laboratory and analyzed for benzene, total BTEX, TPH, the GRO and DRO combined fraction, and chlorides. Assuming water could be encountered around 100', the following should not be exceeded:

- Chlorides (ads determined by EPA method 300.1): 40,000 mg/kg or background concentration, whichever is greater

- TPH (EPA SW-846 method 418.a or other division-approved EPA method): 2500 mg/kg.
- GRO and DRO combined fraction (EPA SW-846 method 8015M): 1000 mg/kg.
- BTEX (EPA SW-846 method 8021B or 8260B or other approved EPA method): 50 mg/kg
 - Benzene (EPA SW-846 method 8021B or 8260B or other approved EPA method): 10 mg/kg

A five point composite sample was taken of the pit using sample tools and all samples tested per Subsection B of 19.15.17.1 3(B)(1)(b) results attached.

- 8) If the contents are above the concentration limits after stabilization Whiting will comply with 19.15.17.13.C (Waste Excavation and Removal)

Not necessary

- 9) A trench shall have a properly constructed foundation and side walls consisting of a firm, unyielding base, smooth, free of rocks, debris, sharp edges or irregularities to prevent the liners rupture or tear.

This was done

- 10) Geotextile is required under the liner where needed to reduce localized stress-strain or protuberances that may otherwise compromise the liner's integrity.

Not required

- 11) A trench shall be constructed with a geomembrane liner. The geomembrane liner shall consist of a 20-mil string re-enforced LLDPE liner or equivalent liner that the division district office approves. The geomembrane liner shall be composed of an impervious, synthetic material that is resistant to petroleum hydrocarbons, salts, and acidic and alkaline solutions. Liner compatibility shall comply with EPA SW-846 Method 9090A.

All standards were met

- 12) The operator shall minimize liner seams and orient them up and down, not across a slope. The operator shall use factory welded seams where possible. Prior to field seaming the operator shall overlap liners 4-6 inches and orient liner seams parallel to the line of maximum slope, ie, oriented along, not across the slope. The operator shall minimize the number of field seams in corners and irregularly shaped areas. Qualified personnel shall perform field seams in corners and irregularly shaped areas. Qualified personnel shall perform field welding and testing.

The liner did not require seaming

- 13) The operator shall install sufficient liner material to reduce stress and strain on the liner.

No stress or strain was on the liner

- 14) The operator shall ensure that the outer edges of all liners are secured for the deposit of the excavated waste material into the trench.

Outer edges were secured

- 15) If it is determined that contents of the pit doesn't exceed the above-specified concentrations, the pit will be covered with compacted, non-waste-containing, earthen material. A division-prescribed soil cover will be constructed and the site will be re-contoured and re-vegetated, per Subsections D, E, F, G, H, of 19.15.17.13 NMAC

The pit material passed solidification and testing standards. The trench area was then back filled with compacted, non-waste containing earthen material.

- 16) All areas associated with the pit and trench that are no longer being used will be substantially restored to the condition that existed prior to oil and gas operations by placement of the soil cover re-contouring to match original contours and surrounding topography, and re-vegetating.

This was done – please see attached pictures

- 17) If an alternative to the re-vegetation requirements is required to prevent erosion, protect fresh water, or protect human health and the environment, this alternative will be

proposed to the surface owner. The proposed alternative, with written documentation demonstrating that the surface owner approves the alternative, will be submitted to the division for approval.

No alternative is required

- 18) Soil cover will consist of 4' of non-waste containing earthen material with chloride concentrations less than 600mg/KG including 1' of topsoil

Four feet of non-waste earthen cover was achieved including one foot of suitable material to establish vegetation.

- 19) All contents, including synthetic pit liners, will be buried in place. By folding outer edges of the pit/trench liner to overlap waste material, and then installing a geomembrane liner cover that is 20 mil string reinforced LLDPE, synthetic material, impervious, resistant to ultra violet light, petroleum hydrocarbons, salts, acid and alkaline.

These was done including placing a 20 mil LLDPE liner cover

- 20) Soil cover will be constructed to the site's existing grade and will prevent ponding of water and erosion of the cover material.

This was done – reference attached photos

- 21) The first favorable growing season following pit closure, all disturbed areas associated with the pit and no longer being used will be seeded or planted.

This area will be re-seeded during the next growing season in this area – reference attached letter

- 22) Seeding will be accomplished by drilling on the contour whenever practical, or by other division-approved methods. Vegetative cover will be considered complete when there is a life form ratio of +/- 50% of pre-disturbance levels with at least 70% total plant cover of pre-disturbance level (Excluding Noxious Weeds) OR in accordance to 19.15.17.13.H.5.d

This will be done during the next growing season in this area

- 23) Seeding or planting will be repeated until the required vegetative cover is successfully achieved.

Whiting will comply

- 24) When conditions aren't favorable for the establishment of vegetation (such as during periods of drought), the division will be contacted for approval to delay seeding or planting, or for approval to use additional cultural techniques such as mulching, fertilizing, irrigating, fencing, etc.

Attached letter

- 25) The division will be notified when seeding or planting is completed, and when successful re-vegetation has been achieved.

Whiting will comply

- 26) Place a steel marker at the center of the onsite burial. The marker shall be 4" diameter, at least 4' high and cemented 3' deep. The following will be welded, stamped or otherwise permanently engraved into the marker; operator name, lease name, well number and location, unit letter, section, township, range, and that the marker designates an onsite burial

Reference attached pictures

- 27) Within 60 days of closure, completion, a closure report will be submitted on form C-144, with necessary attachments, to document closure activities, including sampling results, a plot plan, and backfilling details. In this closure report, Whiting will certify that all information in the report and attachments is correct and that Whiting has complied with all applicable closure requirements and conditions specified in the approved Closure Plan. A plat of the temporary pit location will be provided on form C-105.

Kay Maddox

From: Kay Maddox
Sent: Thursday, May 07, 2015 5:23 PM
To: Lowe, Leonard, EMNRD (Leonard.Lowe@state.nm.us)
Cc: Martin, Ed (emartin@slo.state.nm.us); Jones, William V, EMNRD (WilliamV.Jones@state.nm.us)
Subject: Pit Closure Notification

Whiting proposes to close the temporary pit for the well listed below on Tuesday May 12, 2015

State 2028 16 Well #1
30-021-20630
Section 16, T20N, R28E
Harding County, NM

Kay Maddox
Regulatory Supervisor
Whiting Petroleum Corporation
and its wholly owned subsidiary
Whiting Oil and Gas Corporation
400 West Illinois Avenue, Suite 1300
Midland, TX 79701
Direct (432) 686-6709
Cell (432) 638-8475
kay.maddox@whiting.com
www.whiting.com

The information contained in this message may be privileged and confidential and protected from disclosure. If the reader of this message is not the intended recipient, you are hereby notified that any dissemination, distribution or copying of this communication is strictly prohibited. If you have received this communication in error, please notify us immediately by replying to this message and deleting it from your computer.

STATE OF NEW MEXICO

COUNTY OF HARDING

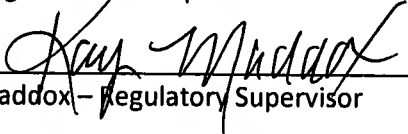
NOTICE OF PIT CLOSURE

In accordance with Section 19.15.17.13.E.4 of the NMOCD , the operator hereby provides notice of an on-site burial of a temporary Oil & Gas drilling pit. All rules and regulations of Rule 19.15.17 have been adhered to.

Lease name: STATE 2028 16
Well No: 1
API No: 30-021-20630
TWN & RGE: TWN 20N RGE 28E Section 16
Unit Letter: G
Footages: 1860 FNL & 1750' FEL
Date of Closure: 05/14/2015

IN WITNESS WHEREOF, the recordation notice of Pit Closure/burial has been executed on the date indicated below by undersigned.

Whiting Petroleum Corporation
And its wholly owned subsidiary
Whiting Oil & Gas Corporation



Kay Maddox – Regulatory Supervisor

HARDING COUNTY, NM
DOCUMENT# 20150039
05/26/15 10:24:16 AM
1 of 1
BY CJ Garrison

STATE OF TEXAS
COUNTY OF MIDLAND

This instrument was acknowledged before me this 19TH day of MAY, 2015, by

Kay Maddox on behalf of Whiting Oil & Gas Corporation.



Notary Public



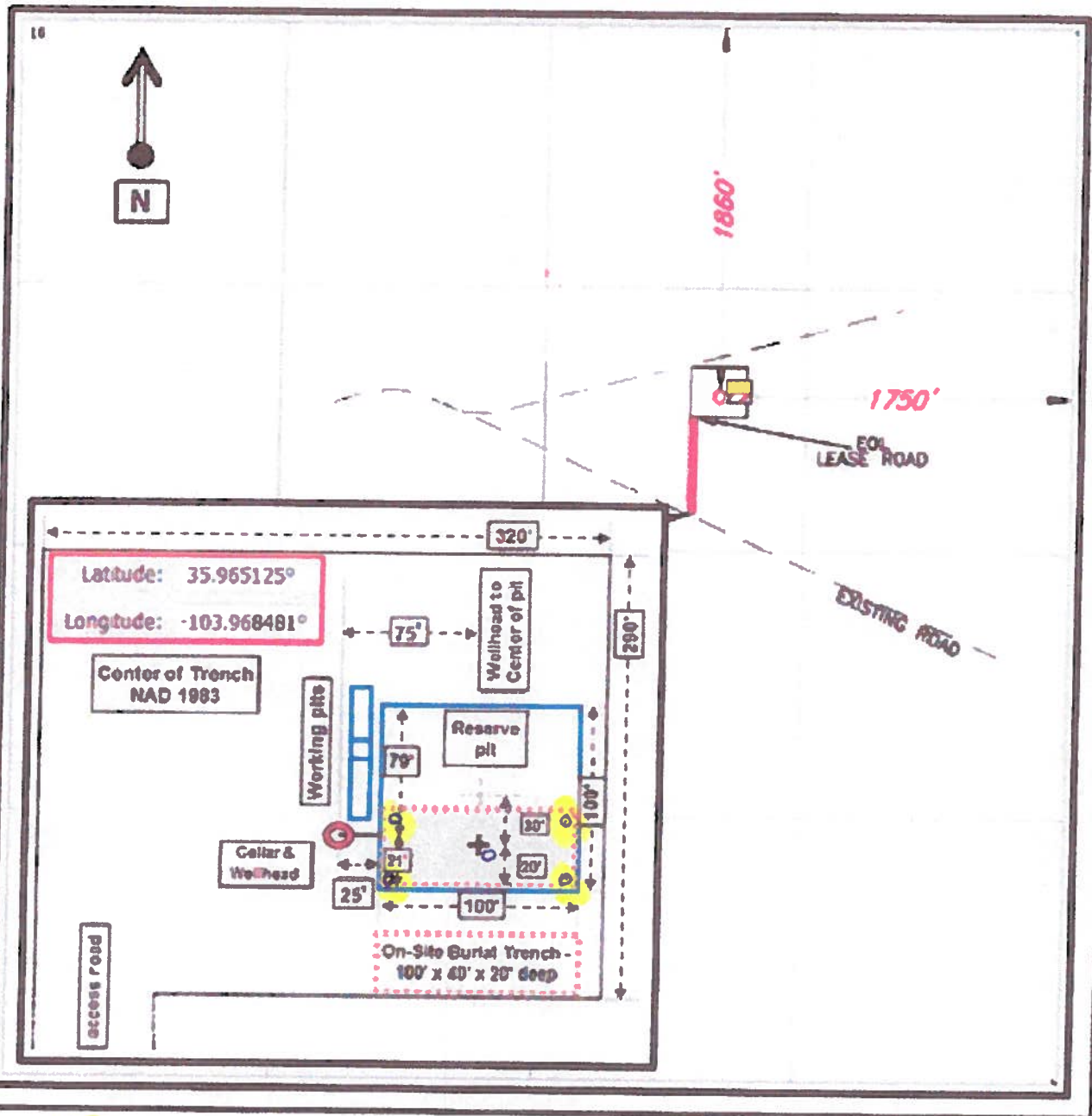
Pit Location

Whiting Petroleum Corporation

State 2028 #16-1

T-20-N, R-28E, Section 16 NMPM

Harding County, New Mexico



○ = Location of under liner composite soil samples

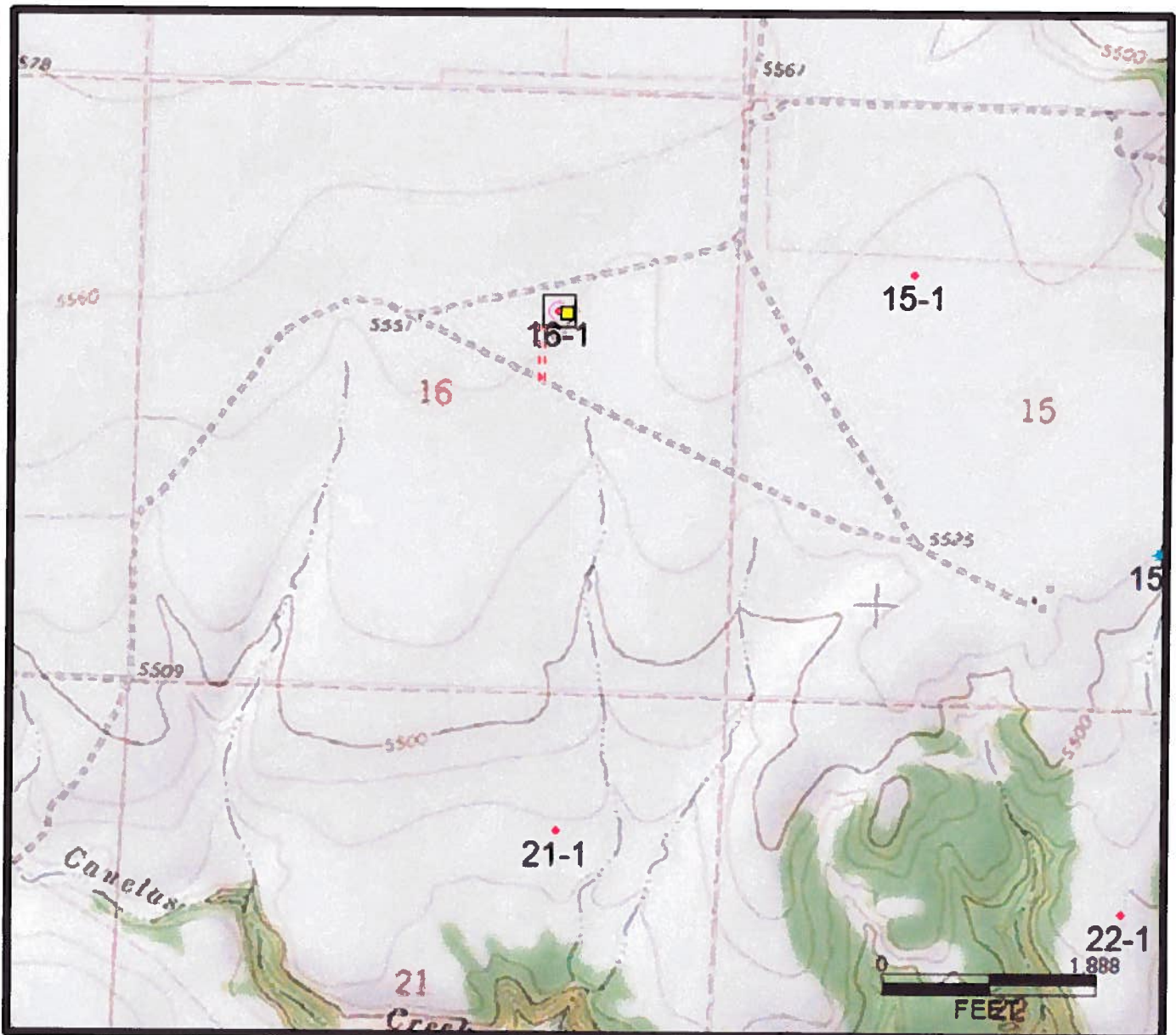
Topo Map

Whiting Petroleum Corporation

State 2028 #16-1

T-20-N, R-28E, Section 16 NMPM

Harding County, New Mexico



May 21, 2015

ROBERT MCNAUGHTON

WHITING OIL & GAS

400 W. ILLINOIS, SUITE 1300

MIDLAND, TX 79701

RE: WEST BRAVO DOME

Enclosed are the results of analyses for samples received by the laboratory on 05/08/15 8:55.

Cardinal Laboratories is accredited through Texas NELAP under certificate number T104704398-13-5. Accreditation applies to drinking water, non-potable water and solid and chemical materials. All accredited analytes are denoted by an asterisk (*). For a complete list of accredited analytes and matrices visit the TCEQ website at

www.tceq.texas.gov/field/ga/lab_accred_certif.html.

Cardinal Laboratories is accredited through the State of Colorado Department of Public Health and Environment for:

Method EPA 552.2	Total Haloacetic Acids (HAA-5)
Method EPA 524.2	Total Trihalomethanes (TTHM)
Method EPA 524.4	Regulated VOCs (V1, V2, V3)

Cardinal Laboratories is accredited through the State of New Mexico Environment Department for:

Method SM 9223-B	Total Coliform and E. coli (Colilert MMO-MUG)
Method EPA 524.2	Regulated VOCs and Total Trihalomethanes (TTHM)
Method EPA 552.2	Total Haloacetic Acids (HAA-5)

Accreditation applies to public drinking water matrices for State of Colorado and New Mexico.

This report meets NELAP requirements and is made up of a cover page, analytical results, and a copy of the original chain-of-custody. If you have any questions concerning this report, please feel free to contact me.

Sincerely,



Celey D. Keene

Lab Director/Quality Manager

Analytical Results For:WHITING OIL & GAS
400 W. ILLINOIS, SUITE 1300
MIDLAND TX, 79701Project: WEST BRAVO DOME
Project Number: NONE GIVEN
Project Manager: ROBERT MCNAUGHTON
Fax To: NONEReported:
21-May-15 14:22

Sample ID	Laboratory ID	Matrix	Date Sampled	Date Received
STATE 2028-161 SOIL BELOW LINE	H501192-01	Soil	07-May-15 13:00	08-May-15 08:55
MITCHELL 2028-221 SOIL BELOW L	H501192-02	Soil	07-May-15 13:30	08-May-15 08:55
MITCHELL 2028-221 SOLIDIFIED PI	H501192-03	Soil	07-May-15 13:15	08-May-15 08:55

ground under original liner.

Cardinal Laboratories

* = Accredited Analyte

PLEASE NOTE: Liability and Damages. Cardinal's liability and client's exclusive remedy for any claim arising, whether based in contract or tort, shall be limited to the amount paid by client for analyses. All claims, including those for negligence or any other cause whatsoever shall be deemed waived unless made in writing and received by Cardinal within thirty (30) days after completion of the applicable service. In no event shall Cardinal be liable for incidental or consequential damage including, without limitation, business interruptions, loss of use, or loss of profits incurred by client, its subsidiaries, affiliates or successors arising out of or related to the performance of the services hereunder by Cardinal, regardless of whether such claim is based upon any of the above stated reasons or otherwise. Results relate only to the samples identified above. This report shall not be reproduced except in full with written approval of Cardinal Laboratories.



Celey D. Keene, Lab Director/Quality Manager

Analytical Results For:

 WHITING OIL & GAS
 400 W. ILLINOIS, SUITE 1300
 MIDLAND TX, 79701

 Project: WEST BRAVO DOME
 Project Number: NONE GIVEN
 Project Manager: ROBERT MCNAUGHTON
 Fax To: NONE

 Reported:
 21-May-15 14:22

STATE 2028-161 SOIL BELOW LINER
H501192-01 (Soil)

Analyte	Result	MDL	Reporting Limit	Units	Dilution	Batch	Analyst	Analyzed	Method	Notes
---------	--------	-----	-----------------	-------	----------	-------	---------	----------	--------	-------

Cardinal Laboratories
Inorganic Compounds

Chloride	ND		16.0	mg/kg	4	5050806	AP	08-May-15	4500-Cl-B	
----------	----	--	------	-------	---	---------	----	-----------	-----------	--

Organic Compounds

TPH 418.1	ND		100	mg/kg	10	5051809	CK	20-May-15	418.1	
-----------	----	--	-----	-------	----	---------	----	-----------	-------	--

Volatile Organic Compounds by EPA Method 8021

Benzene*	ND		0.050	mg/kg	50	5050808	MS	12-May-15	8021B	
Toluene*	ND		0.050	mg/kg	50	5050808	MS	12-May-15	8021B	
Ethylbenzene*	ND		0.050	mg/kg	50	5050808	MS	12-May-15	8021B	
Total Xylenes*	ND		0.150	mg/kg	50	5050808	MS	12-May-15	8021B	
Total BTEX	ND		0.300	mg/kg	50	5050808	MS	12-May-15	8021B	
Surrogate: 4-Bromofluorobenzene (PMD)			109 %	61-154		5050808	MS	12-May-15	8021B	

Petroleum Hydrocarbons by GC FID

GRO C6-C10	ND		10.0	mg/kg	1	5050801	CK	08-May-15	8015B	
DRO >C10-C28	ND		10.0	mg/kg	1	5050801	CK	08-May-15	8015B	
Surrogate: 1-Chlorooctane			90.1 %	47.2-157		5050801	CK	08-May-15	8015B	
Surrogate: 1-Chlorooctadecane			93.7 %	52.1-176		5050801	CK	08-May-15	8015B	

Cardinal Laboratories

*=Accredited Analyte

PLEASE NOTE: Liability and Damages. Cardinal's liability and client's exclusive remedy for any claim arising, whether based in contract or tort, shall be limited to the amount paid by client for analyses. All claims, including those for negligence or any other cause whatsoever shall be deemed waived unless made in writing and received by Cardinal within thirty (30) days after completion of the applicable service. In no event shall Cardinal be liable for incidental or consequential damage including, without limitation, business interruptions, loss of use, or loss of profits incurred by client, its subsidiaries, affiliates or successors arising out of or related to the performance of the services hereunder by Cardinal, regardless of whether such claim is based upon any of the above stated reasons or otherwise. Results relate only to the samples identified above. This report shall not be reproduced except in full with written approval of Cardinal Laboratories.



Celey D. Keene, Lab Director/Quality Manager

Analytical Results For:

WHITING OIL & GAS
400 W. ILLINOIS, SUITE 1300
MIDLAND TX, 79701

Project: WEST BRAVO DOME
Project Number: NONE GIVEN
Project Manager: ROBERT MCNAUGHTON
Fax To: NONE

Reported:
21-May-15 14:22

MITCHELL 2028-221 SOIL BELOW LINER H501192-02 (Soil)

Analyte	Result	MDL	Reporting Limit	Units	Dilution	Batch	Analyst	Analyzed	Method	Notes
---------	--------	-----	-----------------	-------	----------	-------	---------	----------	--------	-------

Cardinal Laboratories

Inorganic Compounds

Chloride	80.0		16.0	mg/kg	4	5050806	AP	08-May-15	4500-Cl-B	
----------	------	--	------	-------	---	---------	----	-----------	-----------	--

Organic Compounds

TPH 418.1	ND		100	mg/kg	10	5051809	CK	20-May-15	418.1	
-----------	----	--	-----	-------	----	---------	----	-----------	-------	--

Volatile Organic Compounds by EPA Method 8021

Benzene*	ND		0.050	mg/kg	50	5050808	MS	12-May-15	8021B	
Toluene*	ND		0.050	mg/kg	50	5050808	MS	12-May-15	8021B	
Ethylbenzene*	ND		0.050	mg/kg	50	5050808	MS	12-May-15	8021B	
Total Xylenes*	ND		0.150	mg/kg	50	5050808	MS	12-May-15	8021B	
Total BTEX	ND		0.300	mg/kg	50	5050808	MS	12-May-15	8021B	

Surrogate: 4-Bromofluorobenzene (PID)		109 %	61-154		5050808	MS	12-May-15	8021B		
---------------------------------------	--	-------	--------	--	---------	----	-----------	-------	--	--

Petroleum Hydrocarbons by GC FID

GRO C6-C10	ND		10.0	mg/kg	1	5050801	CK	08-May-15	8015B	
DRO >C10-C28	ND		10.0	mg/kg	1	5050801	CK	08-May-15	8015B	

Surrogate: 1-Chlorooctane		95.7 %	47.2-157		5050801	CK	08-May-15	8015B		
---------------------------	--	--------	----------	--	---------	----	-----------	-------	--	--

Surrogate: 1-Chlorooctadecane		98.4 %	52.1-176		5050801	CK	08-May-15	8015B		
-------------------------------	--	--------	----------	--	---------	----	-----------	-------	--	--

Cardinal Laboratories

*=Accredited Analyte

PLEASE NOTE: Liability and Damages. Cardinal's liability and client's exclusive remedy for any claim arising, whether based in contract or tort, shall be limited to the amount paid by client for analyses. All claims, including those for negligence or any other cause whatsoever shall be deemed waived unless made in writing and received by Cardinal within thirty (30) days after completion of the applicable service. In no event shall Cardinal be liable for incidental or consequential damage including, without limitation, business interruptions, loss of use, or loss of profits incurred by client, its subsidiaries, affiliates or successors arising out of or related to the performance of the services hereunder by Cardinal, regardless of whether such claim is based upon any of the above stated reasons or otherwise. Results relate only to the samples identified above. This report shall not be reproduced except in full with written approval of Cardinal Laboratories.

Celey D. Keene

Celey D. Keene, Lab Director/Quality Manager

Analytical Results For:

WHITING OIL & GAS
400 W. ILLINOIS, SUITE 1300
MIDLAND TX, 79701

Project: WEST BRAVO DOME
Project Number: NONE GIVEN
Project Manager: ROBERT MCNAUGHTON
Fax To: NONE

Reported:
21-May-15 14:22

MITCHELL 2028-221 SOLIDIFIED PIT CONTENTS H501192-03 (Soil)

Analyte	Result	MDL	Reporting Limit	Units	Dilution	Batch	Analyst	Analyzed	Method	Notes
---------	--------	-----	-----------------	-------	----------	-------	---------	----------	--------	-------

Cardinal Laboratories

Inorganic Compounds

Chloride	336		16.0	mg/kg	4	5050806	AP	08-May-15	4500-Cl-B	
----------	-----	--	------	-------	---	---------	----	-----------	-----------	--

Organic Compounds

TPH 418.1	449		100	mg/kg	10	5051810	CK	21-May-15	418.1	
-----------	-----	--	-----	-------	----	---------	----	-----------	-------	--

Volatile Organic Compounds by EPA Method 8021

Benzene*	ND		0.050	mg/kg	50	5050808	MS	12-May-15	8021B	
Toluene*	ND		0.050	mg/kg	50	5050808	MS	12-May-15	8021B	
Ethylbenzene*	ND		0.050	mg/kg	50	5050808	MS	12-May-15	8021B	
Total Xylenes*	ND		0.150	mg/kg	50	5050808	MS	12-May-15	8021B	
Total BTEX	ND		0.300	mg/kg	50	5050808	MS	12-May-15	8021B	

Surrogate: 4-Bromofluorobenzene (PID) 109 % 61-154 5050808 MS 12-May-15 8021B

Petroleum Hydrocarbons by GC FID

GRO C6-C10	ND		10.0	mg/kg	1	5050807	CK	09-May-15	8015B	
DRO >C10-C28	36.3		10.0	mg/kg	1	5050807	CK	09-May-15	8015B	

Surrogate: 1-Chlorooctane 99.9 % 47.2-157 5050807 CK 09-May-15 8015B

Surrogate: 1-Chlorooctadecane 106 % 52.1-176 5050807 CK 09-May-15 8015B

Cardinal Laboratories

*=Accredited Analyte

PLEASE NOTE: Liability and Damages. Cardinal's liability and client's exclusive remedy for any claim arising, whether based in contract or tort, shall be limited to the amount paid by client for analyses. All claims, including those for negligence or any other cause whatsoever, shall be deemed waived unless made in writing and received by Cardinal within thirty (30) days after completion of the applicable service. In no event shall Cardinal be liable for incidental or consequential damage including, without limitation, business interruptions, loss of use, or loss of profits incurred by client, its subsidiaries, affiliates or successors arising out of or related to the performance of the services hereunder by Cardinal, regardless of whether such claim is based upon any of the above stated reasons or otherwise. Results relate only to the samples identified above. This report shall not be reproduced except in full with written approval of Cardinal Laboratories.



Celey D. Keene, Lab Director/Quality Manager

Analytical Results For:

WHITING OIL & GAS
400 W. ILLINOIS, SUITE 1300
MIDLAND TX, 79701

Project: WEST BRAVO DOME
Project Number: NONE GIVEN
Project Manager: ROBERT MCNAUGHTON
Fax To: NONE

Reported:
21-May-15 14:22

Inorganic Compounds - Quality Control
Cardinal Laboratories

Analyte	Result	Reporting Limit	Units	Spike Level	Source Result	%REC	%REC Limits	RPD	RPD Limit	Notes
Batch 5050806 - 1:4 DI Water										
Blank (5050806-BLK1)										
Chloride	ND	16.0	mg/kg							Prepared & Analyzed: 08-May-15
LCS (5050806-BS1)										
Chloride	432	16.0	mg/kg	400		108	80-120			Prepared & Analyzed: 08-May-15
LCS Dup (5050806-BSD1)										
Chloride	432	16.0	mg/kg	400		108	80-120	0.00	20	Prepared & Analyzed: 08-May-15

Cardinal Laboratories

*=Accredited Analyte

PLEASE NOTE: Liability and Damages. Cardinal's liability and client's exclusive remedy for any claim arising, whether based in contract or tort, shall be limited to the amount paid by client for analyses. All claims, including those for negligence or any other cause whatsoever shall be deemed waived unless made in writing and received by Cardinal within thirty (30) days after completion of the applicable service. In no event shall Cardinal be liable for incidental or consequential damage including, without limitation, business interruptions, loss of use, or loss of profits incurred by client, its subsidiaries, affiliates or successors arising out of or related to the performance of the services hereunder by Cardinal, regardless of whether such claim is based upon any of the above stated reasons or otherwise. Results relate only to the samples identified above. This report shall not be reproduced except in full with written approval of Cardinal Laboratories.



Celey D. Keene, Lab Director/Quality Manager

Analytical Results For:

WHITING OIL & GAS
400 W. ILLINOIS, SUITE 1300
MIDLAND TX, 79701

Project: WEST BRAVO DOME
Project Number: NONE GIVEN
Project Manager: ROBERT MCNAUGHTON
Fax To: NONE

Reported:
21-May-15 14:22

Organic Compounds - Quality Control

Cardinal Laboratories

Analyte	Result	Reporting Limit	Units	Spike Level	Source Result	%REC	%REC Limits	RPD	RPD Limit	Notes
---------	--------	--------------------	-------	----------------	------------------	------	----------------	-----	--------------	-------

Batch 5051809 - Solvent Extraction

Blank (5051809-BLK1)

Prepared: 19-May-15 Analyzed: 20-May-15

TPH 418.1 ND 20.0 mg/kg

LCS (5051809-BS1)

Prepared: 19-May-15 Analyzed: 20-May-15

TPH 418.1 5310 20.0 mg/kg 5000 106 70-130

LCS Dup (5051809-BSD1)

Prepared: 19-May-15 Analyzed: 20-May-15

TPH 418.1 5300 20.0 mg/kg 5000 106 70-130 0.170 20

Batch 5051810 - Solvent Extraction

Blank (5051810-BLK1)

Prepared & Analyzed: 21-May-15

TPH 418.1 ND 100 mg/kg

LCS (5051810-BS1)

Prepared & Analyzed: 21-May-15

TPH 418.1 5330 100 mg/kg 5000 107 70-130

LCS Dup (5051810-BSD1)

Prepared & Analyzed: 21-May-15

TPH 418.1 5280 100 mg/kg 5000 106 70-130 0.830 20

Cardinal Laboratories

*=Accredited Analyte

PLEASE NOTE: Liability and Damages. Cardinal's liability and client's exclusive remedy for any claim arising, whether based in contract or tort, shall be limited to the amount paid by client for analyses. All claims, including those for negligence or any other cause whatsoever shall be deemed waived unless made in writing and received by Cardinal within thirty (30) days after completion of the applicable service. In no event shall Cardinal be liable for incidental or consequential damage including, without limitation, business interruptions, loss of use, or loss of profits incurred by client, its subsidiaries, affiliates or successors arising out of or related to the performance of the services hereunder by Cardinal, regardless of whether such claim is based upon any of the above stated reasons or otherwise. Results relate only to the samples identified above. This report shall not be reproduced except in full with written approval of Cardinal Laboratories.



Celey D. Keene, Lab Director/Quality Manager

Analytical Results For:

WHITING OIL & GAS
400 W. ILLINOIS, SUITE 1300
MIDLAND TX, 79701

Project: WEST BRAVO DOME
Project Number: NONE GIVEN
Project Manager: ROBERT MCNAUGHTON
Fax To: NONE

Reported:
21-May-15 14:22

Volatile Organic Compounds by EPA Method 8021 - Quality Control
Cardinal Laboratories

Analytic	Result	Reporting Limit	Units	Spike Level	Source Result	%REC Limits	RPD	RPD Limit	Notes
----------	--------	--------------------	-------	----------------	------------------	----------------	-----	--------------	-------

Batch 5050808 - Volatiles
Blank (5050808-BLK1)

Prepared: 08-May-15 Analyzed: 12-May-15

Benzene	ND	0.050	mg/kg						
Toluene	ND	0.050	mg/kg						
Ethylbenzene	ND	0.050	mg/kg						
Total Xylenes	ND	0.150	mg/kg						
Total BTEX	ND	0.300	mg/kg						
Surrogate: 4-Bromofluorobenzene (PID)	0.0538		mg/kg	0.0500		108	61-154		

LCS (5050808-BS1)

Prepared: 08-May-15 Analyzed: 12-May-15

Benzene	1.93	0.050	mg/kg	2.00		96.5	77.1-114		
Toluene	2.07	0.050	mg/kg	2.00		104	67-114		
Ethylbenzene	2.00	0.050	mg/kg	2.00		100	63.5-121		
Total Xylenes	5.92	0.150	mg/kg	6.00		98.7	62.4-125		
Surrogate: 4-Bromofluorobenzene (PID)	0.0490		mg/kg	0.0500		98.1	61-154		

LCS Dup (5050808-BS1)

Prepared: 08-May-15 Analyzed: 12-May-15

Benzene	1.90	0.050	mg/kg	2.00		95.2	77.1-114	1.34	16.4
Toluene	1.98	0.050	mg/kg	2.00		99.2	67-114	4.46	16.2
Ethylbenzene	1.92	0.050	mg/kg	2.00		95.9	63.5-121	4.16	17
Total Xylenes	5.62	0.150	mg/kg	6.00		93.7	62.4-125	5.17	17
Surrogate: 4-Bromofluorobenzene (PID)	0.0494		mg/kg	0.0500		98.9	61-154		

Cardinal Laboratories

*=Accredited Analyte

PLEASE NOTE: Liability and Damages. Cardinal's liability and client's exclusive remedy for any claim arising, whether based in contract or tort, shall be limited to the amount paid by client for analyses. All claims, including those for negligence or any other cause whatsoever shall be deemed waived unless made in writing and received by Cardinal within thirty (30) days after completion of the applicable service. In no event shall Cardinal be liable for incidental or consequential damage including, without limitation, business interruptions, loss of use, or loss of profits incurred by client, its subsidiaries, affiliates or successors arising out of or related to the performance of the services hereunder by Cardinal, regardless of whether such claim is based upon any of the above stated reasons or otherwise. Results relate only to the samples identified above. This report shall not be reproduced except in full with written approval of Cardinal Laboratories.



Celey D. Keene, Lab Director/Quality Manager

Analytical Results For:

WHITING OIL & GAS
400 W. ILLINOIS, SUITE 1300
MIDLAND TX, 79701

Project: WEST BRAVO DOME
Project Number: NONE GIVEN
Project Manager: ROBERT MCNAUGHTON
Fax To: NONE

Reported:
21-May-15 14:22

Petroleum Hydrocarbons by GC FID - Quality Control
Cardinal Laboratories

Analyte	Result	Reporting Limit	Units	Spike Level	Source Result	%REC	%REC Limits	RPD	RPD Limit	Notes
---------	--------	-----------------	-------	-------------	---------------	------	-------------	-----	-----------	-------

Batch 5050801 - General Prep - Organics
Blank (5050801-BLK1)

Prepared & Analyzed: 08-May-15

GRO C6-C10	ND	10.0	mg/kg							
DRO >C10-C28	ND	10.0	mg/kg							
EXT DRO >C28-C35	ND	10.0	mg/kg							
Total TPH C6-C28	ND	10.0	mg/kg							
Surrogate: 1-Chlorooctane	48.6		mg/kg	50.0		97.2	47.2-157			
Surrogate: 1-Chlorooctadecane	50.4		mg/kg	50.0		101	52.1-176			

LCS (5050801-BS1)

Prepared & Analyzed: 08-May-15

GRO C6-C10	198	10.0	mg/kg	200		99.0	72.5-115			
DRO >C10-C28	207	10.0	mg/kg	200		104	81.3-118			
Total TPH C6-C28	405	10.0	mg/kg	400		101	80-113			
Surrogate: 1-Chlorooctane	48.0		mg/kg	50.0		96.1	47.2-157			
Surrogate: 1-Chlorooctadecane	50.8		mg/kg	50.0		102	52.1-176			

LCS Dup (5050801-BSD1)

Prepared & Analyzed: 08-May-15

GRO C6-C10	201	10.0	mg/kg	200		101	72.5-115	1.52	10.1	
DRO >C10-C28	213	10.0	mg/kg	200		106	81.3-118	2.51	15.3	
Total TPH C6-C28	414	10.0	mg/kg	400		103	80-113	2.03	12.1	
Surrogate: 1-Chlorooctane	49.0		mg/kg	50.0		98.0	47.2-157			
Surrogate: 1-Chlorooctadecane	51.9		mg/kg	50.0		104	52.1-176			

Batch 5050807 - General Prep - Organics
Blank (5050807-BLK1)

Prepared: 08-May-15 Analyzed: 09-May-15

GRO C6-C10	ND	10.0	mg/kg							
DRO >C10-C28	ND	10.0	mg/kg							
EXT DRO >C28-C35	ND	10.0	mg/kg							
Total TPH C6-C28	ND	10.0	mg/kg							
Surrogate: 1-Chlorooctane	45.0		mg/kg	50.0		89.9	47.2-157			
Surrogate: 1-Chlorooctadecane	49.2		mg/kg	50.0		98.3	52.1-176			

Cardinal Laboratories

*=Accredited Analyte

PLEASE NOTE: Liability and Damages. Cardinal's liability and client's exclusive remedy for any claim arising, whether based in contract or tort, shall be limited to the amount paid by client for analyses. All claims, including those for negligence or any other cause whatsoever shall be deemed waived unless made in writing and received by Cardinal within thirty (30) days after completion of the applicable service. In no event shall Cardinal be liable for incidental or consequential damage including, without limitation, business interruptions, loss of use, or loss of profits incurred by client, its subsidiaries, affiliates or successors arising out of or related to the performance of the services hereunder by Cardinal, regardless of whether such claim is based upon any of the above stated reasons or otherwise. Results relate only to the samples identified above. This report shall not be reproduced except in full with written approval of Cardinal Laboratories.



Celey D. Keene, Lab Director/Quality Manager

Analytical Results For:

 WHITING OIL & GAS
 400 W. ILLINOIS, SUITE 1300
 MIDLAND TX, 79701

 Project: WEST BRAVO DOME
 Project Number: NONE GIVEN
 Project Manager: ROBERT MCNAUGHTON
 Fax To: NONE

 Reported:
 21-May-15 14:22

Petroleum Hydrocarbons by GC FID - Quality Control
Cardinal Laboratories

Analyte	Result	Reporting Limit	Units	Spike Level	Source Result	%REC	%REC Limits	RPD	RPD Limit	Notes
---------	--------	--------------------	-------	----------------	------------------	------	----------------	-----	--------------	-------

Batch 5050807 - General Prep - Organics
LCS (5050807-BS1)

Prepared: 08-May-15 Analyzed: 09-May-15

GRO C6-C10	193	10.0	mg/kg	200		96.7	72.5-115			
DRO >C10-C28	201	10.0	mg/kg	200		101	81.3-118			
Total TPH C6-C28	394	10.0	mg/kg	400		98.6	80-113			
Surrogate: 1-Chlorooctane	48.0		mg/kg	50.0		95.9	47.2-157			
Surrogate: 1-Chlorooctadecane	50.6		mg/kg	50.0		101	52.1-176			

LCS Dup (5050807-BSD1)

Prepared: 08-May-15 Analyzed: 09-May-15

GRO C6-C10	199	10.0	mg/kg	200		99.3	72.5-115	2.72	10.1	
DRO >C10-C28	209	10.0	mg/kg	200		105	81.3-118	3.93	15.3	
Total TPH C6-C28	408	10.0	mg/kg	400		102	80-113	3.34	12.1	
Surrogate: 1-Chlorooctane	48.9		mg/kg	50.0		97.8	47.2-157			
Surrogate: 1-Chlorooctadecane	52.2		mg/kg	50.0		104	52.1-176			

Cardinal Laboratories

*=Accredited Analyte

PLEASE NOTE: Liability and Damages. Cardinal's liability and client's exclusive remedy for any claim arising, whether based in contract or tort, shall be limited to the amount paid by client for analyses. All claims, including those for negligence or any other cause whatsoever shall be deemed waived unless made in writing and received by Cardinal within thirty (30) days after completion of the applicable service. In no event shall Cardinal be liable for incidental or consequential damage including, without limitation, business interruptions, loss of use, or loss of profits incurred by client, its subsidiaries, affiliates or successors arising out of or related to the performance of the services hereunder by Cardinal, regardless of whether such claim is based upon any of the above stated reasons or otherwise. Results relate only to the samples identified above. This report shall not be reproduced except in full with written approval of Cardinal Laboratories.



Celey D. Keene, Lab Director/Quality Manager

Notes and Definitions

ND	Analyte NOT DETECTED at or above the reporting limit
RPD	Relative Percent Difference
**	Samples not received at proper temperature of 6°C or below.
***	Insufficient time to reach temperature.
-	Chloride by SM4500Cl-B does not require samples be received at or below 6°C
	Samples reported on an as received basis (wet) unless otherwise noted on report

Cardinal Laboratories

*=Accredited Analyte

PLEASE NOTE: Liability and Damages. Cardinal's liability and client's exclusive remedy for any claim arising, whether based in contract or tort, shall be limited to the amount paid by client for analyses. All claims, including those for negligence or any other cause whatsoever shall be deemed waived unless made in writing and received by Cardinal within thirty (30) days after completion of the applicable service. In no event shall Cardinal be liable for incidental or consequential damage including, without limitation, business interruptions, loss of use, or loss of profits incurred by client, its subsidiaries, affiliates or successors arising out of or related to the performance of the services hereunder by Cardinal, regardless of whether such claim is based upon any of the above stated reasons or otherwise. Results relate only to the samples identified above. This report shall not be reproduced except in full with written approval of Cardinal Laboratories.



Celey D. Keene, Lab Director/Quality Manager



CHAIN-OF-CUSTODY AND ANALYSIS REQUEST

Page 12 of 12



December 30, 2014

ROBERT MCNAUGHTON

WHITING OIL & GAS

400 W. ILLINOIS, SUITE 1300

MIDLAND, TX 79701

RE: WEST BRAVO DOME

Enclosed are the results of analyses for samples received by the laboratory on 12/17/14 8:50.

Cardinal Laboratories is accredited through Texas NELAP under certificate number T104704398-13-5. Accreditation applies to drinking water, non-potable water and solid and chemical materials. All accredited analytes are denoted by an asterisk (*). For a complete list of accredited analytes and matrices visit the TCEQ website at www.tceq.texas.gov/field/qa/lab_accred_certif.html.

Cardinal Laboratories is accredited through the State of Colorado Department of Public Health and Environment for:

Method EPA 552.2	Haloacetic Acids (HAA-5)
Method EPA 524.2	Total Trihalomethanes (TTHM)
Method EPA 524.4	Regulated VOCs (V1, V2, V3)

Accreditation applies to public drinking water matrices.

This report meets NELAP requirements and is made up of a cover page, analytical results, and a copy of the original chain-of-custody. If you have any questions concerning this report, please feel free to contact me.

Sincerely,

A handwritten signature in dark ink that reads "Coley D. Keene". The signature is written in a cursive style with a large, stylized 'C' and 'K'.

Celey D. Keene

Lab Director/Quality Manager

Analytical Results For:

WHITING OIL & GAS
ROBERT MCNAUGHTON
400 W. ILLINOIS, SUITE 1300
MIDLAND TX, 79701
Fax To: NONE

PIT CONTENTS

Received: 12/17/2014
Reported: 12/30/2014
Project Name: WEST BRAVO DOME
Project Number: NONE GIVEN
Project Location: HARDING COUNTY NM

Sampling Date: 12/16/2014
Sampling Type: Soil
Sampling Condition: Cool & Intact
Sample Received By: Jodi Henson

Sample ID: STATE 2028 #161 (H403834-01)

BTEX 8021B		mg/kg		Analyzed By: MS					
Analyte	Result	Reporting Limit	Analyzed	Method Blank	BS	% Recovery	True Value QC	RPD	Qualifier
Benzene*	<0.050	0.050	12/19/2014	ND	2.09	104	2.00	6.78	
Toluene*	<0.050	0.050	12/19/2014	ND	2.06	103	2.00	7.11	
Ethylbenzene*	<0.050	0.050	12/19/2014	ND	1.98	99.2	2.00	6.91	
Total Xylenes*	<0.150	0.150	12/19/2014	ND	6.04	101	6.00	7.32	
Total BTEX	<0.300	0.300	12/19/2014	ND					

Surrogate: 4-Bromofluorobenzene (PIL) 104 % 61-154

Chloride, SM4500Cl-B		mg/kg		Analyzed By: AP					
Analyte	Result	Reporting Limit	Analyzed	Method Blank	BS	% Recovery	True Value QC	RPD	Qualifier
Chloride	32.0	16.0	12/18/2014	ND	416	104	400	0.00	
TPH 418.1									

TPH 418.1		mg/kg		Analyzed By: CK					
Analyte	Result	Reporting Limit	Analyzed	Method Blank	BS	% Recovery	True Value QC	RPD	Qualifier
TPH 418.1	2150	100	12/29/2014	ND	5510	110	5000	8.85	
TPH 8015M									

TPH 8015M		mg/kg		Analyzed By: MS					
Analyte	Result	Reporting Limit	Analyzed	Method Blank	BS	% Recovery	True Value QC	RPD	Qualifier
GRO C6-C10	<10.0	10.0	12/18/2014	ND	204	102	200	2.45	
DRO >C10-C28	13.0	10.0	12/18/2014	ND	192	96.1	200	4.88	

Surrogate: 1-Chlorooctane 86.9 % 47.2-157

Surrogate: 1-Chlorooctadecane 93.8 % 52.1-176

Cardinal Laboratories

*=Accredited Analyte

PLEASE NOTE: Liability and Damages. Cardinal's liability and client's exclusive remedy for any claim arising, whether based in contract or tort, shall be limited to the amount paid by client for analyses. All claims, including those for negligence and any other cause whatsoever shall be deemed waived unless made in writing and received by Cardinal within thirty (30) days after completion of the applicable service. In no event shall Cardinal be liable for incidental or consequential damages, including, without limitation, business interruptions, loss of use, or loss of profits incurred by client, its subsidiaries, affiliates or successors arising out of or related to the performance of the services hereunder by Cardinal, regardless of whether such claim is based upon any of the above stated reasons or otherwise. Results relate only to the samples identified above. This report shall not be reproduced except in full with written approval of Cardinal Laboratories.



Celest D. Keene, Lab Director/Quality Manager

Notes and Definitions

ND	Analyte NOT DETECTED at or above the reporting limit
RPD	Relative Percent Difference
**	Samples not received at proper temperature of 6°C or below.
***	Insufficient time to reach temperature.
-	Chloride by SM4500Cl-B does not require samples be received at or below 6°C
	Samples reported on an as received basis (wet) unless otherwise noted on report

Cardinal Laboratories

* = Accredited Analyte

PLEASE NOTE: Liability and Damages. Cardinal's liability and client's exclusive remedy for any claim arising, whether based in contract or tort, shall be limited to the amount paid by client for analyses. All claims, including those for negligence and any other cause whatsoever shall be deemed waived unless made in writing and received by Cardinal within thirty (30) days after completion of the applicable service. In no event shall Cardinal be liable for incidental or consequential damages, including, without limitation, business interruptions, loss of use, or loss of profits incurred by client, its subsidiaries, affiliates or successors arising out of or related to the performance of the services hereunder by Cardinal, regardless of whether such claim is based upon any of the above stated reasons or otherwise. Results relate only to the samples identified above. This report shall not be reproduced except in full with written approval of Cardinal Laboratories.



Celey D. Keene, Lab Director/Quality Manager



CHAIN-OF-CUSTODY AND ANALYSIS REQUEST

101 East Maryland, Hobbs, NM 88240
(575) 393-2326 FAX (575) 393-2476

BILL TO

ANALYSIS REQUEST

Company Name:

Whiting Oil & Gas

Project Manager:

Robert McLaughlin

Address: 400 W. Illinois, Suite 1300

City: Midland State: TX Zip: 79701

Phone #: 806-471-5628

Fax #:

Project #:

Project Owner:

Project Name: West Bravo Dome

Project Location: Harding County, NM

Sample Name: Danny Holcomb

P.O. #:

Company: Whiting Oil & Gas

Attn: Gary Bullock

Address: 400 W. Illinois, Suite 1300

City: Midland

State: TX Zip: 79701

Phone #:

Fax #:

FOR LAB USE ONLY

MATRIX

PRESERV

SAMPLING

Lab I.D.

Sample I.D.

4403834

State 2028 161

Mitchell 2028 221

State 2028 201

Fell 2027 251

State 2027 361

Dahl 1927 4031

(G)RAB OR (C)OMP.

CONTAINERS

GROUNDWATER

WASTEWATER

SOIL

OIL

SLUDGE

OTHER

ACID/BASE

ICE / COOL

OTHER

DATE

TIME

TPH 8015

TPH 418.1

Btex

CI

✓

✓

✓

✓

✓

✓

✓

✓

✓

✓

✓

✓

✓

✓

✓

✓

✓

✓

✓

✓

✓

✓

✓

✓

✓

✓

✓

PLEASE NOTE: Liability and Damages. Cardinal's liability and direct exclusion remedy for any claims arising out of or related to the performance of any service rendered by Cardinal is limited to the amount paid by the client for the service. No other damages, including those for negligence and any other causes whatsoever shall be deemed without written notice in writing and received by Cardinal within 30 days after completion of the applicable service. In no event shall Cardinal be liable for incidental or consequential damages, including without limitation, business interruptions, loss of use, or loss of profits incurred by client, its subsidiaries, affiliates or successors, arising out of or related to the performance of any service rendered by Cardinal.

Relinquished By:

Date: 10/17/14

Received By:

Specimen Number

Relinquished By:

Date:

Received By:

Specimen Number

Time:

Delivered By: (Circle One)

Sampler - UPS - Bus - Other:

Sample Condition

Cool Intact

Yes

No

CHECKED BY:

Signature

Phone Result:

Yes

No

Add'l Phone #:

Add'l Fax #:

REMARKS:

Yes

No

Add'l Phone #:

Add'l Fax #:

djholcomb75@gmail.com
kay.maddox@whiting.com

WHITING OIL & GAS CORPORATION

Workover and Completion Report

Well Name:	State 2028 #16-1	Field:	Other	Date:	05/14/15	Day:	18	Type:	Initial Completion
API:	30-021-20630	Move On Date:	8/28/2014	AFE #:	14-1117-02	Rig:	NA	Supv DH	Depth: 2,824

Present Operation: WELL CLOSED IN

Csg:	5 1/2' 15.5# J-55	Liner:	N/A
Rods:	N/A	Perfs:	2632' - 2646' (0.42" holes 6 sof)
Tbg:	80 JTS 2 7/8 EUE 8RD 6.5# J-55 YB KC LINED. 1- 10' PUP		Click to Calc. HP - Hrs

GHG Gas Vol(Mcf)		Dur. Hrs?	#### mcf/d	% of gas	Gas Volume Estimated ??	Producing Method
Total Rig Hrs:	0	Daily Activity		GHG Event Total HP/Hr (Units > 130 HP)	0 for #### hrs	Units <= 130 HP (Count)

4/22/15

MI Hartley Construction dirt equipment to begin mixing pit contents with clean dirt to stabilize contents. MO dirt equipment.

4/29/15

Remove barbed wire fencing and posts. MI dirt equipment, mix pit contents with additional clean dirt to stabilize contents. Move contents from south side of pit to north side. MO dirt equipment.

5/6/15 - 5/7/15

MI dirt equipment, dig burial trench under south portion of existing pit.

5/12/14

Perform trench burial pit closure per NMOCD rules. Transfer pit contents to lined trench. Wrap stabilized cuttings with overlapping new 20 mil LLDPE liner, cover trench liner with a minimum of 4 feet of dirt cover, NMOCD notified and not present.

5/14/15

Complete covering trench burial with a minimum of four feet of clean dirt cover. Fill in old pit area with clean dirt cover. MO dirt equipment.

5/18/15

Spread topsoil over entire covered pit area and install 4.5" OD steel pit burial marker in center of pit burial (set in concrete).

Will reseed pit closure area during 2015 planting season.

Danny

Costs:

[illegible]



May 20, 2015

Mr. Leonard Lowe
New Mexico Oil Conservation Division
1220 S. St. Francis Dr
Santa Fe, NM 87505

RE: Pit Closure

Dear Mr. Lowe,

Whiting Oil & Gas shall re-seed the disturbed Pit area for the well listed below. The re-seeding shall occur in the next rainy season documented for Harding County, New Mexico approximately August/September 2015.

If you have additional question please contact me @ 432.686.6709 or kay.maddox@whiting.com
Thank you for your time.

Sincerely,

Kay Maddox
Regulatory Supervisor

STATE 2028 16 Well # 1
30-021-20630
Harding County, New Mexico

*Whiting Petroleum Corporation
and its wholly owned subsidiary
Whiting Oil and Gas Corporation*

400 W. Illinois Avenue, Suite 1300, Midland, TX 79701 Office: 432.686.6700 Fax 432.686.6799



Whiting Oil & Gas Corporation

STATE LEASE WELL NO. 2028 #16-1
UL G. SEC. 16, T20N, R28E
1860' FNL & 1750' FEL
API #30-021-20630 HARDING CO., NM

Looking
West



Looking South



Looking North



Looking East







Submit 1 Copy To Appropriate District Office
District I - (575) 393-6161
1625 N. French Dr., Hobbs, NM 88240
District II - (575) 748-1283
811 S. First St., Artesia, NM 88210
District III - (505) 334-6178
1000 Rio Brazos Rd., Aztec, NM 87410
District IV - (505) 476-3460
1220 S. St. Francis Dr., Santa Fe, NM 87505

State of New Mexico
Energy, Minerals and Natural Resources

Form C-103
Revised July 18, 2013

OIL CONSERVATION DIVISION
1220 South St. Francis Dr.
Santa Fe, NM 87505

WELL API NO. 30-021-20630
5. Indicate Type of Lease STATE <input checked="" type="checkbox"/> FEE <input type="checkbox"/>
6. State Oil & Gas Lease No.
7. Lease Name or Unit Agreement Name STATE 2028 16
8. Well Number WELL # 1
9. OGRID Number 25078
10. Pool name or Wildcat BRAVO DOME CARBON DIOXIDE GAS 640
11. Elevation (Show whether DR, RKB, RT, GR, etc.) 5535' GR

SUNDRY NOTICES AND REPORTS ON WELLS (DO NOT USE THIS FORM FOR PROPOSALS TO DRILL OR TO DEEPEN OR PLUG BACK TO A DIFFERENT RESERVOIR. USE "APPLICATION FOR PERMIT" (FORM C-101) FOR SUCH PROPOSALS.)	
1. Type of Well: Oil Well <input type="checkbox"/> Gas Well <input checked="" type="checkbox"/> Other <input type="checkbox"/>	
2. Name of Operator WHITING OIL AND GAS CORPORATION	
3. Address of Operator 400 W ILLINOIS STE 1300 MIDLAND, TX 79701	
4. Well Location Unit Letter G 1860 feet from the NORTH line and 1750 feet from the EAST line Section 16 Township 20N Range 28E NMPM County HARDING	
11. Elevation (Show whether DR, RKB, RT, GR, etc.) 5535' GR	

12. Check Appropriate Box to Indicate Nature of Notice, Report or Other Data

NOTICE OF INTENTION TO:		SUBSEQUENT REPORT OF:	
PERFORM REMEDIAL WORK <input type="checkbox"/>	PLUG AND ABANDON <input type="checkbox"/>	REMEDIAL WORK <input type="checkbox"/>	ALTERING CASING <input type="checkbox"/>
TEMPORARILY ABANDON <input type="checkbox"/>	CHANGE PLANS <input type="checkbox"/>	COMMENCE DRILLING OPNS. <input type="checkbox"/>	P AND A <input type="checkbox"/>
PULL OR ALTER CASING <input type="checkbox"/>	MULTIPLE COMPL <input type="checkbox"/>	CASING/CEMENT JOB <input type="checkbox"/>	
DOWNHOLE COMMINGLE <input type="checkbox"/>			
CLOSED-LOOP SYSTEM <input type="checkbox"/>			
OTHER: <input type="checkbox"/>		OTHER <input checked="" type="checkbox"/> TEMPORARY PIT CLOSURE	

13. Describe proposed or completed operations. (Clearly state all pertinent details, and give pertinent dates, including estimated date of starting any proposed work). SEE RULE 19.15.7.14 NMAC. For Multiple Completions: Attach wellbore diagram of proposed completion or recompletion.

08/29/2014 SPUD WELL -
08/30/2014 DRLD 12 1/4" HOLE TO 774' - RAN 9 5/8" J-55 36# CSG SET @ 772' W/300SXS CMT 13.00PPG 1.89 YIELD + 200 SXS 14.80 PPG 1.32 YIELD TOTAL 500 SXS CL C CMT, CIR 65 BBLS CMT TO SURF, PRESS UP TO 600# FOR 30" HELD,
09/03/2015 TD WELL @ 2824'
09/04/2014 RAN 5 1/2" J-55 15.5# CSG IN 8 3/4" HOLE, SET CSG @ 2824 W/400 SXS CMT 13.00 PPG 2.61 YIELD + 275 SXS CMT 14.80 PPG 1.86 YIELD -TOTAL 675 SXS CL C CMT, CIRC 68 BBLS CMT TO SURF, PRESS UP TO 600# FOR 30" HELD
09/04/2014 RELEASED RIG

WHITING WAS GRANTED A 90 DAY EXTENSION TO GET THIS PIT CLOSED DUE TO WEATHER AND THE NEED FOR ON-SITE TRENCH BURIAL RATHER THAN IN-PLACE BURIAL

TEMPORARY PIT WAS CLOSED 5/14/2015

Spud Date: 08/29/2014 Rig Release Date: 09/04/2014

I hereby certify that the information above is true and complete to the best of my knowledge and belief.

SIGNATURE Kay Maddox TITLE: REGULATORY ANALYST DATE: 05/23/2015

Type or print name Kay Maddox E-mail address: kay.Maddox@Whiting.com PHONE: 432-638-8475

For State Use Only

APPROVED BY: _____ TITLE _____ DATE _____
Conditions of Approval (if any): _____

DISTRICT I
1625 N. French Dr., Hobbs, NM 88240

State of New Mexico

Form C-102

DISTRICT II
1301 W. Grand Avenue, Artesia, NM 88210

Energy, Minerals, and Natural Resources Department

Revised October 12, 2005

DISTRICT III
1000 Rio Brazos Rd., Aztec, NM 87410

OIL CONSERVATION DIVISION

Submit to Appropriate District Office

State Lease - 4 copies

Fee Lease - 3 copies

1220 South St. Francis Dr.

Santa Fe, New Mexico 87505

DISTRICT IV
1220 S. St. Francis Dr., Santa Fe, NM 87505

☐ AMENDED REPORT

WELL LOCATION AND ACREAGE DEDICATION PLAT

¹ API Number 30-021-20630	² Pool Code 96010	³ Pool Name BRAVO DOME CARBON DIOXIDE GAS (440)
⁴ Property Code	⁵ Property Name STATE 2028	⁶ Well Number 16-1
⁷ OGRID No. 25078	⁸ Operator Name WHITING OIL & GAS CORPORATION	⁹ Elevation 5535'

¹⁰Surface Location

UL or lot no.	Section	Township	Range	Lot Idn	Feet from the	North/South line	Feet from the	East/West line	County
G	16	20 NORTH	28 EAST, N.M.P.M.		1860'	NORTH	1750'	EAST	HARDING

Bottom Hole Location If Different From Surface

UL or lot no.	Section	Township	Range	Lot Idn	Feet from the	North/South line	Feet from the	East/West line	County
¹² Dedicated Acres 640	¹³ Joint or Infill	¹⁴ Consolidation Code	¹⁵ Order No.						

NO ALLOWABLE WELL BE ASSIGNED TO THIS COMPLETION UNTIL ALL INTERESTS HAVE BEEN CONSOLIDATED OR A NON-STANDARD UNIT HAS BEEN APPROVED BY THE DIVISION

<div><p>¹⁶</p><p>NAD 27 NME ZONE X:608044 Y:1806738 LAT:35°57'54.49" LON:-103°58'05.61"</p><p>ROAD 492 29.82 RODS PAD 1.61 Acres</p><p>DETAIL NOT TO SCALE</p><p>280' 250' 1.61 ACRES 250' 280'</p><p>EXISTING ROAD</p><p>EOL LEASE ROAD</p><p>BOI LEASE ROAD</p><p>X1609799 Y1808585</p><p>X1609784 Y1803291</p></div>	<div><p>¹⁷OPERATOR CERTIFICATION</p><p>I hereby certify that the information contained herein is true and complete to the best of my knowledge and belief, and that this organization either owns a working interest or unleased mineral interest in the land including the proposed bottom hole location or has a right to drill this well at this location pursuant to a contract with an owner of such a mineral or working interest, or to a voluntary pooling agreement or a compulsory pooling order heretofore entered by the division.</p><p><i>Kay Maddox</i> 5/14/2014 Signature Date KAY MADDOX Printed Name</p><p>¹⁸SURVEYOR CERTIFICATION</p><p>I hereby certify that the well location shown on this plat was plotted from field notes of actual surveys made by me or under my supervision, and that the same is true and correct to the best of my belief.</p><p>MAY 13, 2014 Date of Survey Signature and Seal of Professional Surveyor</p><p>STATE OF NEW MEXICO V. LYNN BEZNER NO.7920 PROFESSIONAL LAND SURVEYOR</p><p><i>V. Lynn Bezner</i> Certificate Number V. Lynn Bezner P.S. #7920</p><p>FILE:LO_STATE_2028_16_1 K.Y.</p></div>
--	--