

District I
1625 N. French Dr., Hobbs, NM 88240
Phone:(575) 393-8161 Fax:(575) 393-0720
District II
811 S. First St., Artesia, NM 88210
Phone:(575) 748-1283 Fax:(575) 748-9720
District III
1000 Rio Brazos Rd., Aztec, NM 87410
Phone:(505) 334-8178 Fax:(505) 334-8170
District IV
1220 S. St Francis Dr., Santa Fe, NM 87505
Phone:(505) 476-3470 Fax:(505) 476-3482

State of New Mexico
Energy, Minerals and Natural Resources
Oil Conservation Division
1220 S. St Francis Dr.
Santa Fe, NM 87505

Form C-101
August 1, 2011
Permit 218454

APPLICATION FOR PERMIT TO DRILL, RE-ENTER, DEEPEN, PLUGBACK, OR ADD A ZONE

1. Operator Name and Address APACHE CORP 303 Veterans Airpark Lane Midland, TX 79705		2. OGRID Number 873
4. Property Code 37346		3. API Number 30-025-43127
5. Property Name WEST BLINEBRY DRINKARD UNIT		6. Well No. 175

7. Surface Location

UL - Lot	C	Section	16	Township	21S	Range	37E	Lot Idn	Feet From	125	N/S Line	N	Feet From	2205	E/W Line	W	County	Lea
----------	---	---------	----	----------	-----	-------	-----	---------	-----------	-----	----------	---	-----------	------	----------	---	--------	-----

8. Proposed Bottom Hole Location

UL - Lot	C	Section	16	Township	21S	Range	37E	Lot Idn	C	Feet From	50	N/S Line	N	Feet From	1980	E/W Line	W	County	Lea
----------	---	---------	----	----------	-----	-------	-----	---------	---	-----------	----	----------	---	-----------	------	----------	---	--------	-----

9. Pool Information

EUNICE,BLI-TU-DR, NORTH	22900
-------------------------	-------

Additional Well Information

11. Work Type New Well	12. Well Type OIL	13. Cable/Rotary	14. Lease Type State	15. Ground Level Elevation 3496
16. Multiple N	17. Proposed Depth 6900	18. Formation Drinkard	19. Contractor	20. Spud Date
Depth to Ground water		Distance from nearest fresh water well		Distance to nearest surface water

☒ We will be using a closed-loop system in lieu of lined pits

21. Proposed Casing and Cement Program

Type	Hole Size	Casing Size	Casing Weight/ft	Setting Depth	Sacks of Cement	Estimated TOC
Surf	11	8.625	24	1300	450	0
Prod	7.875	5.5	17	6900	900	0

Casing/Cement Program: Additional Comments

--

22. Proposed Blowout Prevention Program

Type	Working Pressure	Test Pressure	Manufacturer
Double Ram	3000	2000	

23. I hereby certify that the information given above is true and complete to the best of my knowledge and belief. I further certify I have complied with 19.15.14.9 (A) NMAC <input checked="" type="checkbox"/> and/or 19.15.14.9 (B) NMAC <input checked="" type="checkbox"/> , if applicable. Signature: _____ Printed Name: Electronically filed by Bobby Smith Title: _____ Email Address: bobby.smith@apachecorp.com Date: 3/17/2016	<div style="text-align: center;">OIL CONSERVATION DIVISION</div> Approved By: Paul Kautz Title: Geologist Approved Date: 3/18/2016 Expiration Date: 3/18/2018 Conditions of Approval Attached
Phone: 432-818-1020	

District I
1625 N. French Dr., Hobbs, NM 88240
Phone: (575) 393-6161 Fax: (575) 393-0720
District II
811 S. First St., Artesia, NM 88210
Phone: (575) 748-1283 Fax: (575) 748-9720
District III
1000 Rio Brazos Road, Aztec, NM 87410
Phone: (505) 334-6178 Fax: (505) 334-6170
District IV
1220 S. St. Francis Dr., Santa Fe, NM 87505
Phone: (505) 476-3460 Fax: (505) 476-3462

State of New Mexico
Energy, Minerals & Natural Resources Department
OIL CONSERVATION DIVISION
1220 South St. Francis Dr.
Santa Fe, NM 87505

Form C-102
Revised August 1, 2011
Submit one copy to appropriate
District Office

☐ AMENDED REPORT

WELL LOCATION AND ACREAGE DEDICATION PLAT

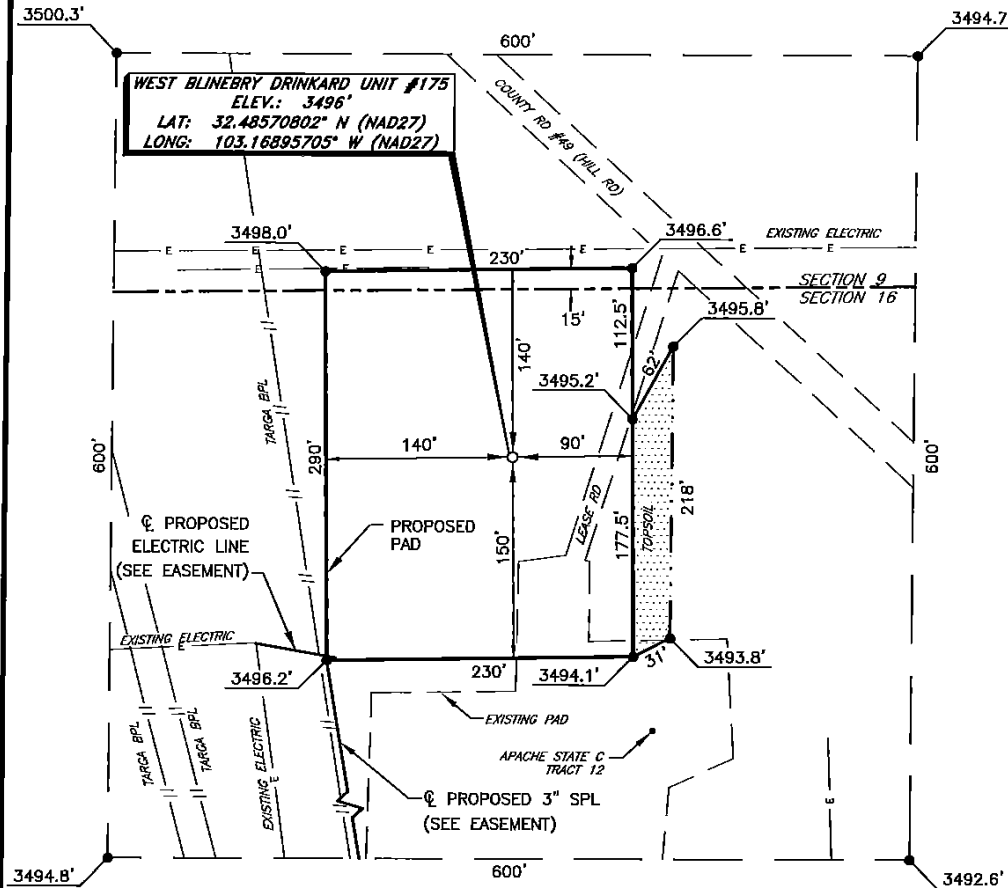
¹ API Number 30-025-		² Pool Code 22900		³ Pool Name EUNICE; BLI-TU-DR, N.	
⁴ Property Code 37346		⁵ Property Name WEST BLINEBRY DRINKARD UNIT			⁶ Well Number 175
⁷ OGRID NO. 873		⁸ Operator Name APACHE CORPORATION			⁹ Elevation 3496'
¹⁰ Surface Location					
UL or lot no. C	Section 16	Township 21S	Range 37E	Lot Idn 125	Feet from the NORTH
Feet From the 2205		East/West line WEST		County LEA	
¹¹ Bottom Hole Location If Different From Surface					
UL or lot no. C	Section 16	Township 21S	Range 37E	Lot Idn 50	Feet from the NORTH
Feet From the 1980		East/West line WEST		County LEA	
¹² Dedicated Acres 40	¹³ Joint or Infill	¹⁴ Consolidation Code	¹⁵ Order No.		

No allowable will be assigned to this completion until all interest have been consolidated or a non-standard unit has been approved by the division.

<p>①</p> <p>S 89°26'00" W 2641.97'</p> <p>1980'</p> <p>N 72°08'23" W (GRID) 237.29' (HORIZ.)</p> <p>2205'</p> <p>50'</p> <p>B. H.</p> <p>S. L.</p> <p>SEE DETAIL "A"</p> <p>②</p> <p>S 89°26'29" W 2642.13'</p>		<p>¹⁷ OPERATOR CERTIFICATION</p> <p>I hereby certify that the information contained herein is true and complete to the best of my knowledge and belief, and that this organization either owns a working interest or unleased mineral interest in the land including the proposed bottom hole location or has a right to drill this well at this location pursuant to a contract with an owner of such a mineral or working interest, or to a voluntary pooling agreement or a compulsory pooling order heretofore entered by the division.</p> <p>Sorina L Flores 3/17/16</p> <p>Signature Date</p> <p>Sorina L Flores</p> <p>Printed Name</p> <p>sorina.flores@apachecorp.com</p> <p>E-mail Address</p>
<p>③</p> <p>N 00°39'21" W 5282.96'</p> <p>3500.3'</p> <p>600'</p> <p>3494.7'</p> <p>600'</p> <p>3494.8'</p> <p>3492.6'</p> <p>16</p> <p>④</p> <p>S 89°25'58" W 2643.61'</p>		<p>GEODETIC DATA NAD 27 GRID - NM EAST</p> <p>SURFACE LOCATION N 542373.3 - E 859045.3</p> <p>LAT: 32.48570802° N LONG: 103.16895705° W</p> <p>BOTTOM HOLE N 542446.0 - E 858819.5</p> <p>LAT: 32.48591478° N LONG: 103.16968670° W</p> <p>CORNER DATA NAD 27 GRID - NM EAST</p> <p>A: CALCULATED CORNER N 537194.4 - E 856899.7</p> <p>B: FOUND BRASS CAP "1911" N 542476.5 - E 856839.2</p> <p>C: FOUND BRASS CAP "1911" N 542502.6 - E 859480.8</p> <p>D: FOUND ALUM CAP N 542528.3 - E 862122.5</p> <p>E: FOUND SPIKE N 537249.1 - E 862185.4</p> <p>F: FOUND BRASS CAP "1911" N 537222.9 - E 859542.2</p>
<p>⑤</p> <p>S 89°22'56" W 2642.97'</p> <p>⑥</p> <p>S 89°25'58" W 2643.61'</p>		<p>¹⁸ SURVEYOR CERTIFICATION</p> <p>I hereby certify that the well location shown on this plat was plotted from field notes of actual surveys made by me or under my supervision, and that the same is true and correct to the best of my belief.</p> <p>1-28-2016</p> <p>Date of Survey</p> <p>Signature and Seal of Professional Surveyor</p> <p>19680</p> <p>Certificate Number</p> <p>REV. 3/11/16 B. H.</p>

RRC - Firm No.: TX 10193838 NM 4655451 - Job No.: LS1601033

APACHE CORPORATION
WEST BLINEBRY DRINKARD UNIT #175
(125' FNL & 2205' FWL)
SECTION 16, T21S, R37E
N. M. P. M., LEA COUNTY, NEW MEXICO



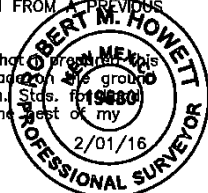
DIRECTIONS TO LOCATION

From the intersection of CR-49 (Hill Rd.) and CR-33 (Turner Rd.);
 Go Southeast on CR-49 approx. 0.8 miles to a lease road on the right;
 Turn right and go Southeast approx. 180 feet to location on the right.

THIS IS NOT A BOUNDARY SURVEY, APPARENT PROPERTY CORNERS AND PROPERTY LINES ARE SHOWN FOR INFORMATION ONLY. BOUNDARY DATA IS SHOWN FROM A PREVIOUS SURVEY REFERENCED HEREON.

I, R. M. Howett, a N. M. Professional Surveyor, hereby certify that I created this unclassified survey of a well location from an actual survey made on the ground under my direct supervision, said survey and plat meet the Min. Stds. for 19680 Surveying in the State of N. M. and are true and correct to the best of my knowledge and belief.

Robert M. Howett
 Robert M. Howett NM PS 19680



SCALE: 1" = 100'
 0 50 100

BEARINGS ARE
 NAD 27 GRID - NM EAST
 DISTANCES ARE GROUND

Firm No.: TX 10193838 NM 4655451

Copyright 2014 - All Rights Reserved

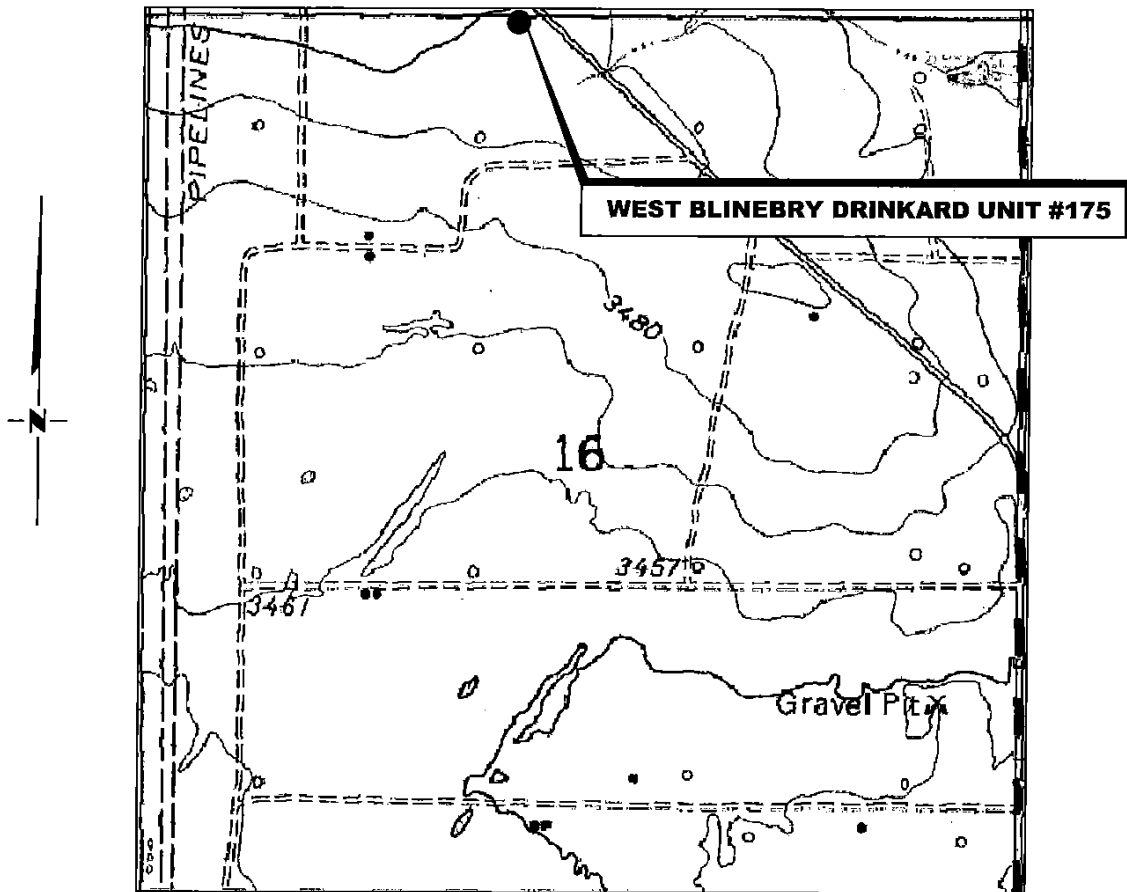
NO.	REVISION	DATE
JOB NO.:	LS1601033	
DWG. NO.:	1601033PAD	

RRC

308 W. BROADWAY ST., HOBBS, NM 88240 (575) 964-8200

SCALE: 1" = 100'
DATE: 1-28-2016
SURVEYED BY: ML/CE
DRAWN BY: LPS
APPROVED BY: RMH
SHEET : 1 OF 1

LOCATION VERIFICATION MAP



(Eunice, NM, is located approx. 3.3 miles to the Southeast.)

**SECTION 16, TWP. 21 SOUTH, RGE. 37 EAST,
N. M. P. M., LEA CO., NEW MEXICO**

OPERATOR: Apache Corporation
LEASE: West Blinebry Drinkard Unit
WELL NO.: 175
ELEVATION: 3496'

LOCATION: 125' FNL & 2205' FWL
CONTOUR INTERVAL: 10'
USGS TOPO. SOURCE MAP:
Eunice, NM (1969)

Firm No.: TX 10193838 NM 4655451

Copyright 2015 -- All Rights Reserved

NO.	REVISION	DATE
JOB NO.:	LS1601033	
DWG. NO.:	1601033LVM	

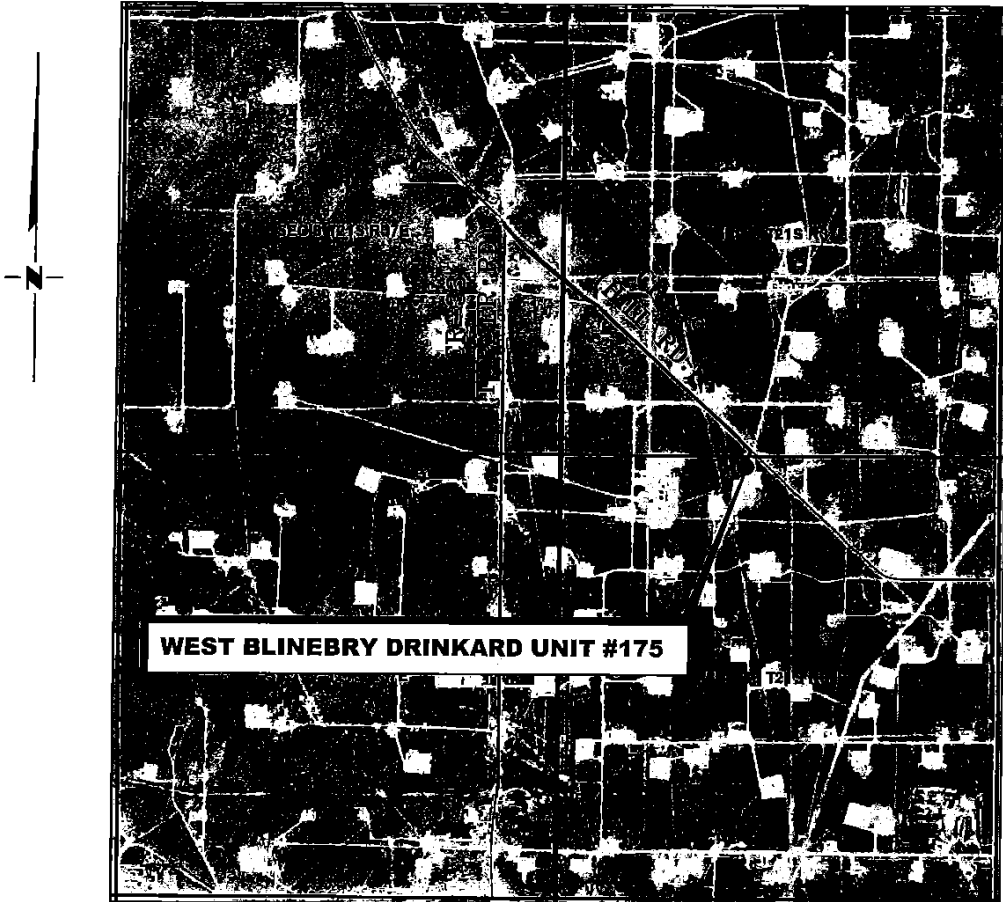
RRC

308 W. BROADWAY ST., HOBBS, NM 88240 (575) 964-8200

SCALE:	1000'
DATE:	1-28-2016
SURVEYED BY:	BK/CG
DRAWN BY:	LPS
APPROVED BY:	RMH
SHEET :	1 OF 1

VICINITY MAP

NOT TO SCALE



*SECTION 16, TWP. 21 SOUTH, RGE. 37 EAST,
N. M. P. M., LEA CO., NEW MEXICO*

OPERATOR: Apache Corporation
LEASE: West Blinebry Drinkard Unit
WELL NO.: 175

LOCATION: 125' FNL & 2205' FWL
ELEVATION: 3496'

Firm No.: TX 10193838 NM 4655451

Copyright 2014 - All Rights Reserved

NO.	REVISION	DATE
JOB NO.: LS1601033		
DWG. NO.: 1601033VM		

RRC

308 W. BROADWAY ST., HOBBS, NM 88240 (575) 964-8200

SCALE: NTS
DATE: 1-28-2016
SURVEYED BY: BK/CG
DRAWN BY: LPS
APPROVED BY: RMH
SHEET : 1 OF 1

District I
1625 N. French Dr., Hobbs, NM 88240
Phone:(575) 393-6161 Fax:(575) 393-0720
District II
811 S. First St., Artesia, NM 88210
Phone:(575) 748-1283 Fax:(575) 748-9720
District III
1000 Rio Brazos Rd., Aztec, NM 87410
Phone:(505) 334-6178 Fax:(505) 334-6170
District IV
1220 S. St Francis Dr., Santa Fe, NM 87505
Phone:(505) 476-3470 Fax:(505) 476-3462

State of New Mexico
Energy, Minerals and Natural Resources
Oil Conservation Division
1220 S. St Francis Dr.
Santa Fe, NM 87505

Form APD Comments

Permit 218454

PERMIT COMMENTS

Operator Name and Address: APACHE CORP [873] 303 Veterans Airpark Lane Midland, TX 79705	API Number: 30-025-43127
	Well: WEST BLINEBRY DRINKARD UNIT #175

Created By	Comment	Comment Date
------------	---------	--------------

District I
 1625 N. French Dr., Hobbs, NM 88240
 Phone:(575) 393-8161 Fax:(575) 393-0720
District II
 811 S. First St., Artesia, NM 88210
 Phone:(575) 748-1283 Fax:(575) 748-9720
District III
 1000 Rio Brazos Rd., Aztec, NM 87410
 Phone:(505) 334-8178 Fax:(505) 334-6170
District IV
 1220 S. St Francis Dr., Santa Fe, NM 87505
 Phone:(505) 476-3470 Fax:(505) 476-3482

State of New Mexico
Energy, Minerals and Natural Resources
Oil Conservation Division
1220 S. St Francis Dr.
Santa Fe, NM 87505

Form APD Conditions

Permit 218454

PERMIT CONDITIONS OF APPROVAL

Operator Name and Address: APACHE CORP [873] 303 Veterans Airpark Lane Midland, TX 79705	API Number: 30-025-43127
	Well: WEST BLINEBRY DRINKARD UNIT #175

OCD Reviewer	Condition
pkautz	Will require a directional survey with the C-104
pkautz	Once the well is spud, to prevent ground water contamination through whole or partial conduits from the surface, the operator shall drill without interruption through the fresh water zone or zones and shall immediately set in cement the water protection string
pkautz	If using a pit for drilling and completion operations, must have an approved pit from prior to spudding the well.
pkautz	SURFACE & PRODUCTION CASING - Cement must circulate to surface
pkautz	If cement does not circulate to surface, must run temperature survey or other log to determine top of cement
pkautz	Surface casing must be set 25' below top of Rustler Anhydrite in order to seal off protectable water
pkautz	Must notify OCD Hobbs Office if lost circulation is encountered at 575-370-3186