

District I
1625 N. French Dr., Hobbs, NM 88240
Phone:(575) 393-8161 Fax:(575) 393-0720
District II
811 S. First St., Artesia, NM 88210
Phone:(575) 748-1283 Fax:(575) 748-9720
District III
1000 Rio Brazos Rd., Aztec, NM 87410
Phone:(505) 334-8178 Fax:(505) 334-8170
District IV
1220 S. St Francis Dr., Santa Fe, NM 87505
Phone:(505) 476-3470 Fax:(505) 476-3482

State of New Mexico
Energy, Minerals and Natural Resources
Oil Conservation Division
1220 S. St Francis Dr.
Santa Fe, NM 87505

Form C-101
August 1, 2011
Permit 227831

APPLICATION FOR PERMIT TO DRILL, RE-ENTER, DEEPEN, PLUGBACK, OR ADD A ZONE

1. Operator Name and Address CIMAREX ENERGY CO. 600 N MARIENFELD STREET MIDLAND, TX 79701		2. OGRID Number 215099
4. Property Code 317060		3. API Number 30-025-43459
5. Property Name STATE LF 30		6. Well No. 004H

7. Surface Location

UL - Lot	P	Section	30	Township	16S	Range	34E	Lot Idn	P	Feet From	210	N/S Line	S	Feet From	990	E/W Line	E	County	Lea
----------	---	---------	----	----------	-----	-------	-----	---------	---	-----------	-----	----------	---	-----------	-----	----------	---	--------	-----

8. Proposed Bottom Hole Location

UL - Lot	A	Section	30	Township	16S	Range	34E	Lot Idn	A	Feet From	330	N/S Line	N	Feet From	480	E/W Line	E	County	Lea
----------	---	---------	----	----------	-----	-------	-----	---------	---	-----------	-----	----------	---	-----------	-----	----------	---	--------	-----

9. Pool Information

KEMNITZ,CISCO, WEST	35340
---------------------	-------

Additional Well Information

11. Work Type New Well	12. Well Type OIL	13. Cable/Rotary	14. Lease Type State	15. Ground Level Elevation 4129
16. Multiple N	17. Proposed Depth 16300	18. Formation Cisco	19. Contractor	20. Spud Date 11/28/2016
Depth to Ground water		Distance from nearest fresh water well		Distance to nearest surface water

☒ We will be using a closed-loop system in lieu of lined pits

21. Proposed Casing and Cement Program

Type	Hole Size	Casing Size	Casing Weight/ft	Setting Depth	Sacks of Cement	Estimated TOC
Surf	17.5	13.375	48	400	256	0
Int1	12.25	9.625	40	4500	1143	0
Prod	8.75	7	32	12631	742	4300
Liner1	6	4.5	11.6	16169	257	12631

Casing/Cement Program: Additional Comments

--

22. Proposed Blowout Prevention Program

Type	Working Pressure	Test Pressure	Manufacturer
Double Ram	2000	2000	Cameran
Double Ram	3000	3000	Cameran
Double Ram	5000	5000	Cameran

23. I hereby certify that the information given above is true and complete to the best of my knowledge and belief. I further certify I have complied with 19.15.14.9 (A) NMAC <input checked="" type="checkbox"/> and/or 19.15.14.9 (B) NMAC <input checked="" type="checkbox"/> , if applicable. Signature: _____ Printed Name: Electronically filed by Genea A Holloway Title: Prod Admin Supervisor Email Address: gholloway@cimarex.com Date: 10/24/2016	<p style="text-align: center;">OIL CONSERVATION DIVISION</p> Approved By: Paul Kautz Title: Geologist Approved Date: 10/27/2016 Expiration Date: 10/27/2018 Conditions of Approval Attached
--	--

District I
1625 N. French Dr., Hobbs, NM 88240
Phone: (575) 393-6161 Fax: (575) 393-0720
District II
811 S. First St., Artesia, NM 88210
Phone: (575) 748-1283 Fax: (575) 748-9720
District III
1000 Rio Brazos Road, Aztec, NM 87410
Phone: (505) 334-6178 Fax: (505) 334-6170
District IV
1220 S. St. Francis Dr., Santa Fe, NM 87505
Phone: (505) 476-3460 Fax: (505) 476-3462

State of New Mexico
Energy, Minerals & Natural Resources Department
OIL CONSERVATION DIVISION
1220 South St. Francis Dr.
Santa Fe, NM 87505

Form C-102
Revised August 1, 2011
Submit one copy to appropriate
District Office

☐ AMENDED REPORT

WELL LOCATION AND ACREAGE DEDICATION PLAT

¹ API Number 30015-	² Pool Code 35340	³ Pool Name Kemnitz; Cisco
⁴ Property Code 300557	⁵ Property Name STATE LF 30	⁶ Well Number #4H
⁷ OGRID No. 162683	⁸ Operator Name CIMAREX ENERGY CO.	⁹ Elevation 4129.1'

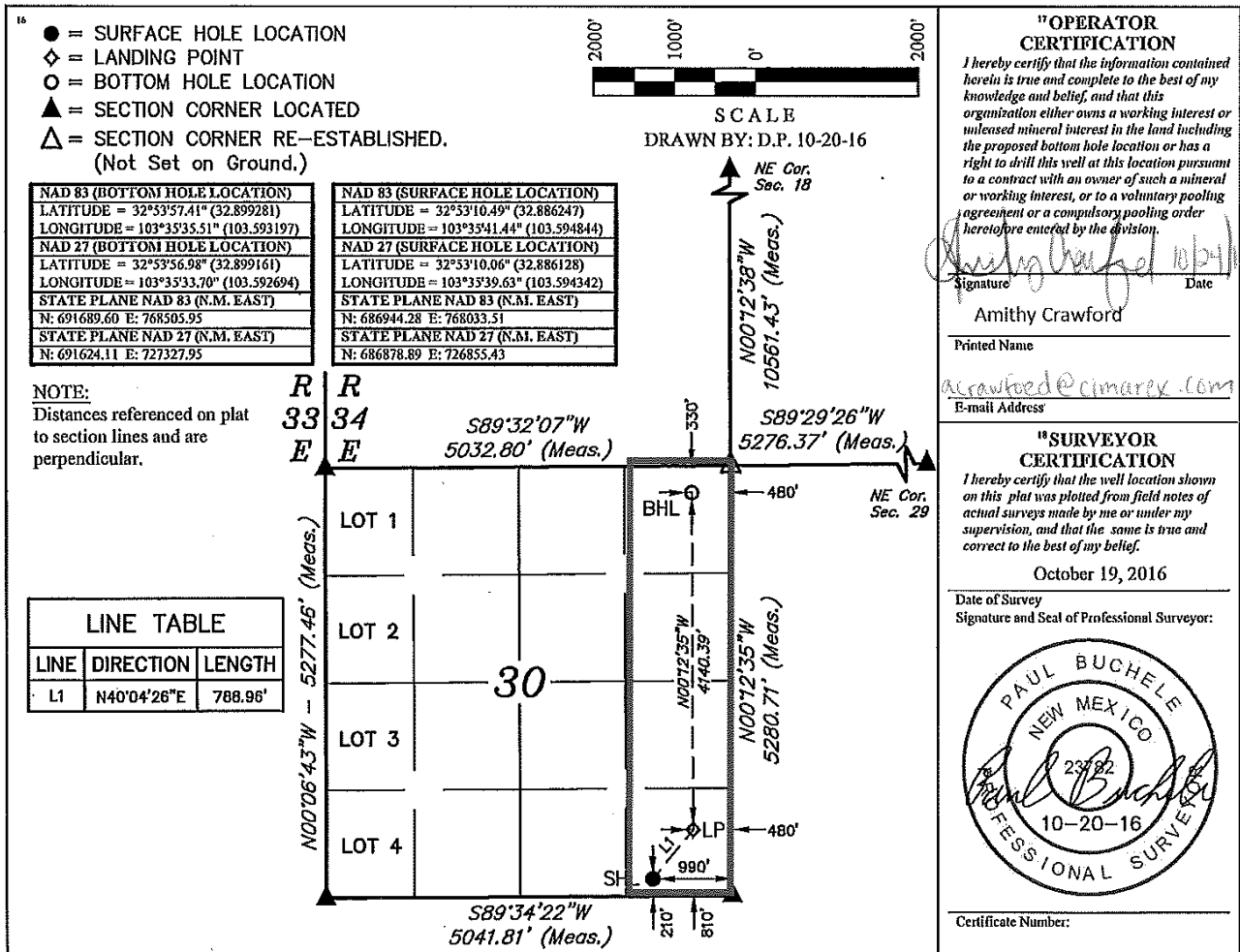
"Surface Location

UL or lot no.	Section	Township	Range	Lot Idn	Feet from the	North/South line	Feet from the	East/West line	County
P	30	16S	34E		210	SOUTH	990	EAST	LEA

"Bottom Hole Location If Different From Surface

UL or lot no.	Section	Township	Range	Lot Idn	Feet from the	North/South line	Feet from the	East/West line	County
A	30	16S	34E		330	NORTH	480	EAST	LEA
¹² Dedicated Acres 160	¹³ Joint or Infill	¹⁴ Consolidation Code	¹⁵ Order No.						

No allowable will be assigned to this completion until all interests have been consolidated or a non-standard unit has been approved by the division.



District I
1625 N. French Dr., Hobbs, NM 88240
Phone:(575) 393-6161 Fax:(575) 393-0720
District II
811 S. First St., Artesia, NM 88210
Phone:(575) 748-1283 Fax:(575) 748-9720
District III
1000 Rio Brazos Rd., Aztec, NM 87410
Phone:(505) 334-6178 Fax:(505) 334-6170
District IV
1220 S. St Francis Dr., Santa Fe, NM 87505
Phone:(505) 476-3470 Fax:(505) 476-3462

State of New Mexico
Energy, Minerals and Natural Resources
Oil Conservation Division
1220 S. St Francis Dr.
Santa Fe, NM 87505

Form APD Comments

Permit 227831

PERMIT COMMENTS

Operator Name and Address: CIMAREX ENERGY CO. [215099] 600 N MARIENFELD STREET MIDLAND , TX 79701	API Number: 30-025-43459
	Well: STATE LF 30 #004H

Created By	Comment	Comment Date
------------	---------	--------------

District I
1625 N. French Dr., Hobbs, NM 88240
Phone:(575) 393-8161 Fax:(575) 393-0720
District II
811 S. First St., Artesia, NM 88210
Phone:(575) 748-1283 Fax:(575) 748-9720
District III
1000 Rio Brazos Rd., Aztec, NM 87410
Phone:(505) 334-8178 Fax:(505) 334-6170
District IV
1220 S. St Francis Dr., Santa Fe, NM 87505
Phone:(505) 476-3470 Fax:(505) 476-3462

State of New Mexico
Energy, Minerals and Natural Resources
Oil Conservation Division
1220 S. St Francis Dr.
Santa Fe, NM 87505

Form APD Conditions

Permit 227831

PERMIT CONDITIONS OF APPROVAL

Operator Name and Address: CIMAREX ENERGY CO. [215099] 600 N MARIENFELD STREET MIDLAND , TX 79701		API Number: 30-025-43459
		Well: STATE LF 30 #004H
OCD Reviewer	Condition	
pkautz	Will require a directional survey with the C-104	
pkautz	Once the well is spud, to prevent ground water contamination through whole or partial conduits from the surface, the operator shall drill without interruption through the fresh water zone or zones and shall immediately set in cement the water protection string	
pkautz	If using a pit for drilling and completion operations, must have an approved pit from prior to spudding the well.	
pkautz	1) SURFACE & INTERMEDIATE1 CASING - Cement must circulate to surface -- 2) INTERMEDIATE2 CASING - Cement must tie back into intermediate1 casing -- 3) PRODUCTION CASING - Cement must tie back into intermediate2 casing -- 4) Liner - Cement must tie back into production casing	
pkautz	If cement does not circulate to surface, must run temperature survey or other log to determine top of cement	
pkautz	Surface casing must be set 25' below top of Rustler Anhydrite in order to seal off protectable water	
pkautz	Must notify OCD Hobbs Office if lost circulation is encountered at 575-370-3186	
pkautz	Must notify OCD Hobbs Office of any water flows in the Salado Formation at 575-370-3186. Report depth and flow rate	
pkautz	1) Must notify OCD Hobbs Office prior to running Stage Tool at 575-370-3186 2) If using Stage Tool on Surface casing, Stage Tool must be set greater than 350' from surface and a minimum of 200 feet above surface shoe. 3) When using a Stage Tool on Intermediate or Production Casing Stage must be a minimum of 50 feet below previous casing shoe.	
pkautz	Must submit Gas Capture Plan (GCP)	
pkautz	Operator shall notify appropriate District office when setting conductor pipe.	
pkautz	3. The Operator is to notify NMOCD by sundry within ten (10) days of spudding a well.	
pkautz	It is the operator's responsibility to monitor cancellation dates of approved APDs.	
pkautz	If an APD expires and if site construction has occurred, site remediation is required.	