

District I
 1625 N. French Dr., Hobbs, NM 88240
 Phone:(575) 393-6161 Fax:(575) 393-0720
District II
 811 S. First St., Artesia, NM 88210
 Phone:(575) 748-1283 Fax:(575) 748-9720
District III
 1000 Rio Brazos Rd., Aztec, NM 87410
 Phone:(505) 334-6178 Fax:(505) 334-6170
District IV
 1220 S. St Francis Dr., Santa Fe, NM 87505
 Phone:(505) 476-3470 Fax:(505) 476-3462

State of New Mexico
Energy, Minerals and Natural Resources
Oil Conservation Division
1220 S. St Francis Dr.
Santa Fe, NM 87505

Form C-101
 August 1, 2011
 Permit 228904

APPLICATION FOR PERMIT TO DRILL, RE-ENTER, DEEPEN, PLUGBACK, OR ADD A ZONE

1. Operator Name and Address MAVERICK OPERATING, LLC 1004 N. Big Spring Suite 121 Midland, TX 79701		2. OGRID Number 287160
		3. API Number 30-025-43544
4. Property Code 314231	5. Property Name TMBR 1 STATE	6. Well No. 002

7. Surface Location

UL - Lot K	Section 1	Township 19S	Range 35E	Lot Idn K	Feet From 2310	N/S Line S	Feet From 2310	E/W Line W	County Lea
---------------	--------------	-----------------	--------------	--------------	-------------------	---------------	-------------------	---------------	---------------

8. Proposed Bottom Hole Location

UL - Lot K	Section 1	Township 19S	Range 35E	Lot Idn K	Feet From 2310	N/S Line S	Feet From 2310	E/W Line W	County Lea
---------------	--------------	-----------------	--------------	--------------	-------------------	---------------	-------------------	---------------	---------------

9. Pool Information

SCHARB;DELAWARE, EAST	96709
-----------------------	-------

Additional Well Information

11. Work Type New Well	12. Well Type OIL	13. Cable/Rotary	14. Lease Type State	15. Ground Level Elevation 3846
16. Multiple N	17. Proposed Depth 7500	18. Formation Delaware	19. Contractor	20. Spud Date 1/15/2017
Depth to Ground water		Distance from nearest fresh water well		Distance to nearest surface water

We will be using a closed-loop system in lieu of lined pits

21. Proposed Casing and Cement Program

Type	Hole Size	Casing Size	Casing Weight/ft	Setting Depth	Sacks of Cement	Estimated TOC
Surf	17.5	13.375	48	500	500	0
Int1	12.25	9.625	40	3750	1000	0
Prod	8.75	5.5	17	7500	1000	3250

Casing/Cement Program: Additional Comments

--

22. Proposed Blowout Prevention Program

Type	Working Pressure	Test Pressure	Manufacturer
Hydril	5000	5000	Cameron

23. I hereby certify that the information given above is true and complete to the best of my knowledge and belief.
 I further certify I have complied with 19.15.14.9 (A) NMAC and/or 19.15.14.9 (B) NMAC , if applicable.

OIL CONSERVATION DIVISION

Signature:			
Printed Name: Electronically filed by Linda Johnston	Approved By: Paul Kautz		
Title: Agent	Title: Geologist		
Email Address: stateoilreports@satx.rr.com	Approved Date: 1/21/2017	Expiration Date: 1/21/2019	
Date: 1/16/2017	Phone: 830-964-5963	Conditions of Approval Attached	

DISTRICT I
1625 N. French Dr., Hobbs, NM 88240
Phone: (575) 393-6161 Fax: (575) 393-0720

DISTRICT II
811 S. First St., Artesia, NM 88210
Phone: (575) 748-1283 Fax: (575) 748-9720

DISTRICT III
1000 Rio Brazos Road, Aztec, NM 87410
Phone: (505) 334-6178 Fax: (505) 334-6170

DISTRICT IV
1220 S. St. Francis Dr., Santa Fe, NM 87505
Phone: (505) 476-3460 Fax: (505) 476-3462

State of New Mexico
Energy, Minerals & Natural Resources Department
OIL CONSERVATION DIVISION
1220 South St. Francis Dr.
Santa Fe, New Mexico 87505

Form C-102
Revised August 1, 2011
Submit one copy to appropriate
District Office

AMENDED REPORT

WELL LOCATION AND ACREAGE DEDICATION PLAT

API Number	Pool Code 59469	Pool Name Scharb, Delaware, East
Property Code	Property Name TMBR 1 STATE	Well Number 2
OGRID No. 287160	Operator Name MAVERICK OPERATING, LLC	Elevation 3846'

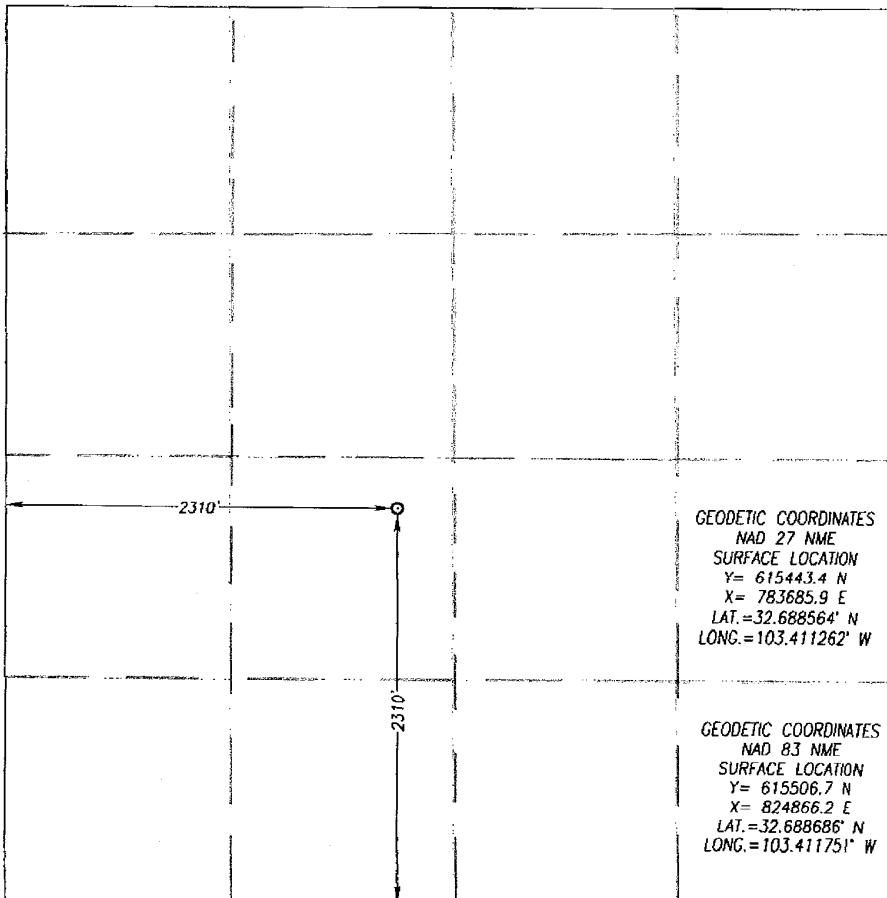
Surface Location

Ul. or lot No.	Section	Township	Range	Lot Idn	Feet from the	North/South line	Feet from the	East/West line	County
K	1	19-S	35-E		2310	SOUTH	2310	WEST	LEA

Bottom Hole Location If Different From Surface

Ul. or lot No.	Section	Township	Range	Lot Idn	Feet from the	North/South line	Feet from the	East/West line	County
Dedicated Acres	Joint or Infill	Consolidation Code	Order No.						

NO ALLOWABLE WILL BE ASSIGNED TO THIS COMPLETION UNTIL ALL INTERESTS HAVE BEEN CONSOLIDATED OR A NON-STANDARD UNIT HAS BEEN APPROVED BY THE DIVISION



OPERATOR CERTIFICATION

I hereby certify that the information herein is true and complete to the best of my knowledge and belief, and that this organization either owns a working interest or unleased mineral interest in the land including the proposed bottom hole location or has a right to drill this well at this location pursuant to a contract with an owner of such mineral or working interest, or to a voluntary pooling agreement or a compulsory pooling order heretofore entered by the division.

Scott Kimbrough 11/16/2016
Signature Date

Printed Name
scott@mogc-kec.com

E-mail Address

SURVEYOR CERTIFICATION

I hereby certify that the well location shown on this plat was plotted from field notes of actual surveys made by me or under my supervision, and that the same is true and correct to the best of my belief.

Date of Survey 11/04/2016
Signature & Seal of Professional Surveyor



Ronald J. Eidson 11/04/2016

Certificate Number Gary G. Eidson 12641
Ronald J. Eidson 3239

District I
 1625 N. French Dr., Hobbs, NM 88240
 Phone:(575) 393-6161 Fax:(575) 393-0720
District II
 811 S. First St., Artesia, NM 88210
 Phone:(575) 749-1283 Fax:(575) 749-9720
District III
 1000 Rio Brazos Rd., Aztec, NM 87410
 Phone:(505) 334-6178 Fax:(505) 334-6170
District IV
 1220 S. St Francis Dr., Santa Fe, NM 87505
 Phone:(505) 476-3470 Fax:(505) 476-3462

State of New Mexico
Energy, Minerals and Natural Resources
Oil Conservation Division
1220 S. St Francis Dr.
Santa Fe, NM 87505

Form APD Comments

Permit 228904

PERMIT COMMENTS

Operator Name and Address: MAVERICK OPERATING, LLC [287160] 1004 N. Big Spring Suite 121 Midland, TX 79701		API Number: 30-025-43544
		Well: TMBR 1 STATE #002
Created By	Comment	Comment Date
Linda Johnston	Proposed spud date: January 15, 2017	11/23/2016

District I
 1625 N. French Dr., Hobbs, NM 88240
 Phone:(575) 393-6161 Fax:(575) 393-0720
District II
 811 S. First St., Artesia, NM 88210
 Phone:(575) 749-1283 Fax:(575) 748-9720
District III
 1000 Rio Brazos Rd., Aztec, NM 87410
 Phone:(505) 334-6178 Fax:(505) 334-6170
District IV
 1220 S. St Francis Dr., Santa Fe, NM 87505
 Phone:(505) 476-3470 Fax:(505) 476-3462

State of New Mexico
Energy, Minerals and Natural Resources
Oil Conservation Division
1220 S. St Francis Dr.
Santa Fe, NM 87505

Form APD Conditions

Permit 228904

PERMIT CONDITIONS OF APPROVAL

Operator Name and Address: MAVERICK OPERATING, LLC [287160] 1004 N. Big Spring Suite 121 Midland, TX 79701	API Number: 30-025-43544
	Well: TMBR 1 STATE #002

OCD Reviewer	Condition
pkautz	Will require a deviation survey with the C-104
pkautz	Pit construction and closure must satisfy all requirements of your approved plan.
pkautz	If using a pit for drilling and completion operations, must have an approved pit from prior to spudding the well.
pkautz	Once the well is spud, to prevent ground water contamination through whole or partial conduits from the surface, the operator shall drill without interruption through the fresh water zone or zones and shall immediately set in cement the water protection string
pkautz	1) SURFACE & INTERNEMIATE CASING - Cement must circulate to surface -- 2) PRODUCTION CASING - Cement must tie back into intermediate casing --
pkautz	If cement does not circulate to surface, must run temperature survey or other log to determine top of cement
pkautz	Surface casing must be set 25' below top of Rustler Anhydrite in order to seal off protectable water
pkautz	Must notify OCD Hobbs Office if lost circulation is encountered at 575-370-3186
pkautz	1) Must notify OCD Hobbs Office prior to running Stage Tool at 575-370-3186 2) If using Stage Tool on Surface casing, Stage Tool must be set greater than 350' from surface and a minimum of 200 feet above surface shoe. 3) When using a Stage Tool on Intermediate or Production Casing Stage must be a minimum of 50 feet below previous casing shoe.
pkautz	Must submit Gas Capture Plan