

District I
1625 N. French Dr., Hobbs, NM 88240
Phone:(575) 393-8161 Fax:(575) 393-0720
District II
811 S. First St., Artesia, NM 88210
Phone:(575) 748-1283 Fax:(575) 748-9720
District III
1000 Rio Brazos Rd., Aztec, NM 87410
Phone:(505) 334-8178 Fax:(505) 334-8170
District IV
1220 S. St Francis Dr., Santa Fe, NM 87505
Phone:(505) 476-3470 Fax:(505) 476-3482

State of New Mexico
Energy, Minerals and Natural Resources
Oil Conservation Division
1220 S. St Francis Dr.
Santa Fe, NM 87505

Form C-101
August 1, 2011
Permit 232520

APPLICATION FOR PERMIT TO DRILL, RE-ENTER, DEEPEN, PLUGBACK, OR ADD A ZONE

1. Operator Name and Address BREITBURN OPERATING LP 1111 Bagby Street Houston, TX 77002		2. OGRID Number 370080
4. Property Code 314022		3. API Number 30-025-43656
5. Property Name ENCORE M STATE		6. Well No. 020

7. Surface Location

UL - Lot	G	Section	29	Township	22S	Range	37E	Lot Idn	G	Feet From	2096	N/S Line	N	Feet From	2205	E/W Line	E	County	Lea
----------	---	---------	----	----------	-----	-------	-----	---------	---	-----------	------	----------	---	-----------	------	----------	---	--------	-----

8. Proposed Bottom Hole Location

UL - Lot	G	Section	29	Township	22S	Range	37E	Lot Idn	G	Feet From	2096	N/S Line	N	Feet From	2205	E/W Line	E	County	Lea
----------	---	---------	----	----------	-----	-------	-----	---------	---	-----------	------	----------	---	-----------	------	----------	---	--------	-----

9. Pool Information

BLINEBRY OIL AND GAS (OIL)	6660
TUBB OIL AND GAS (OIL)	60240
DRINKARD	19190
WC-025 G-04 S223720I;DEVONIAN	98168
WANTZ;ABO	62700
WC-025 G-02 S223729G;GLORIETA	98223

Additional Well Information

11. Work Type New Well	12. Well Type OIL	13. Cable/Rotary	14. Lease Type State	15. Ground Level Elevation 3368
16. Multiple Y	17. Proposed Depth 7600	18. Formation Devonian	19. Contractor	20. Spud Date 3/15/2017
Depth to Ground water		Distance from nearest fresh water well		Distance to nearest surface water

☒ We will be using a closed-loop system in lieu of lined pits

21. Proposed Casing and Cement Program

Type	Hole Size	Casing Size	Casing Weight/ft	Setting Depth	Sacks of Cement	Estimated TOC
Surf	17.5	13.375	54.5	1180	860	0
Int1	12.25	9.625	40	4550	1450	0
Prod	8.75	5.5	20	7600	1600	0

Casing/Cement Program: Additional Comments

--

22. Proposed Blowout Prevention Program

Type	Working Pressure	Test Pressure	Manufacturer
Annular	3000	1500	
Double Ram	3000	2500	

23. I hereby certify that the information given above is true and complete to the best of my knowledge and belief. I further certify I have complied with 19.15.14.9 (A) NMAC <input checked="" type="checkbox"/> and/or 19.15.14.9 (B) NMAC <input checked="" type="checkbox"/> if applicable. Signature: Printed Name: Electronically filed by Jeanie Mcmillan Title: Email Address: jeanie.mcmillan@breitburn.com Date: 3/2/2017 Phone: 713-632-8534	OIL CONSERVATION DIVISION Approved By: Paul Kautz Title: Geologist Approved Date: 3/2/2017 Expiration Date: 3/2/2019 Conditions of Approval Attached
---	---

DISTRICT I
1625 N. French Dr., Hobbs, NM 88240
Phone: (575) 393-6161 Fax: (575) 393-0720

DISTRICT II
811 S. First St., Artesia, NM 88210
Phone: (575) 748-1283 Fax: (575) 748-9720

DISTRICT III
1000 Rio Brazos Road, Aztec, NM 87410
Phone: (505) 334-6178 Fax: (505) 334-6170

DISTRICT IV
1220 S. St. Francis Dr., Santa Fe, NM 87505
Phone: (505) 476-3460 Fax: (505) 476-3462

State of New Mexico
Energy, Minerals & Natural Resources Department
OIL CONSERVATION DIVISION
1220 South St. Francis Dr.
Santa Fe, NM 87505

Form C-102
Revised August 1, 2011
Submit one copy to appropriate
District Office

☐ AMENDED REPORT

WELL LOCATION AND ACREAGE DEDICATION PLAT

¹ API Number	² Pool Code 60240	³ Pool Name Tubb Oil and Gas (Oil)
⁴ Property Code	⁵ Property Name Encore M State	⁶ Well Number 020
⁷ OGRID No. 370080	⁸ Operator Name Breitburn Operating LP	⁹ Elevation 3368'

¹⁰Surface Location

UL or lot no.	Section	Township	Range	Lot kdn	Feet from the	North/South line	Feet from the	East/West line	County
G	29	22 S	37 E		2096'	North	2205'	East	Lea

¹¹Bottom Hole Location If Different From Surface

UL or lot no.	Section	Township	Range	Lot kdn	Feet from the	North/South line	Feet from the	East/West line	County

¹² Dedicated Acres	¹³ Joint or Infill	¹⁴ Consolidation Code	¹⁵ Order No.

No allowable will be assigned to this completion until all interests have been consolidated or a non-standard unit has been approved by the division.

	<p>¹⁷OPERATOR CERTIFICATION</p> <p><i>I hereby certify that the information contained herein is true and complete to the best of my knowledge and belief, and that this organization either owns a working interest or unleased mineral interest in the land including the proposed bottom hole location or has a right to drill this well at this location pursuant to a contract with an owner of such a mineral or working interest, or to a voluntary pooling agreement or a compulsory pooling order heretofore entered by the division.</i></p> <p>Signature: <u>Shelly Doescher</u> Date: <u>02/28/2017</u></p> <p>Printed Name: <u>Shelly Doescher</u></p> <p>E-mail Address: <u>shelly_doescher@yahoo.com</u></p>
	<p>¹⁸SURVEYOR CERTIFICATION</p> <p><i>I hereby certify that the well location shown on this plat was plotted from field notes of actual surveys made by me or under my supervision, and that the same is true and correct to the best of my belief.</i></p> <p>Date of Survey: <u>2-20-2017</u></p> <p>Signature and Seal of Professional Surveyor: <u>Michael L. Stanford</u></p> <p>10324</p> <p>Certificate Number: <u>10324</u></p>
	<p>Encore M State 020 Elev. 3368' NAD 83 NM East N = 498181' E = 896310' Lat. = 32°21'51.59" Long. = -103°11'01.25"</p> <p>M State Lease</p>

5.2 Miles SW of Eunice, New Mexico.

File No. A-11433

File No. A-11433

DISTRICT I
1625 N. French Dr., Hobbs, NM 88240
Phone: (575) 393-6161 Fax: (575) 393-0720
DISTRICT II
811 S. First St., Artesia, NM 88210
Phone: (575) 748-1283 Fax: (575) 748-9720
DISTRICT III
1009 Rio Brazos Road, Aztec, NM 87410
Phone: (505) 334-6178 Fax: (505) 334-6170
DISTRICT IV
1220 S. St. Francis Dr., Santa Fe, NM 87505
Phone: (505) 476-3460 Fax: (505) 476-3462

State of New Mexico
Energy, Minerals & Natural Resources Department
OIL CONSERVATION DIVISION
1220 South St. Francis Dr.
Santa Fe, NM 87505

Form C-102
Revised August 1, 2011
Submit one copy to appropriate
District Office

☐ AMENDED REPORT

WELL LOCATION AND ACREAGE DEDICATION PLAT

¹ API Number	² Pool Code 62700	³ Pool Name Wantz;Abo
⁴ Property Code	⁵ Property Name Encore M State	⁶ Well Number 020
⁷ GRID No. 370080	⁸ Operator Name Breitburn Operating LP	⁹ Elevation 3368'

¹⁰Surface Location

UL or lot no.	Section	Township	Range	Lot Idn	Feet from the	North/South line	Feet from the	East/West line	County
G	29	22 S	37 E		2096'	North	2205'	East	Lea

¹¹Bottom Hole Location If Different From Surface

UL or lot no.	Section	Township	Range	Lot Idn	Feet from the	North/South line	Feet from the	East/West line	County
¹² Dedicated Acres	¹³ Joint or Infill	¹⁴ Consolidation Code	¹⁵ Order No.						

No allowable will be assigned to this completion until all interests have been consolidated or a non-standard unit has been approved by the division.

	<p>¹⁷OPERATOR CERTIFICATION</p> <p>I hereby certify that the information contained herein is true and complete to the best of my knowledge and belief, and that this organization either owns a working interest or unleased mineral interest in the land including the proposed bottom hole location or has a right to drill this well at this location pursuant to a contract with an owner of such a mineral or working interest, or to a voluntary pooling agreement or a compulsory pooling order heretofore entered by the division.</p> <p><i>Shelly Doescher</i> 02/28/2017 Signature Date</p> <p>Shelly Doescher Printed Name</p> <p>shelly_doescher@yahoo.com E-mail Address</p>
	<p>¹⁸SURVEYOR CERTIFICATION</p> <p>I hereby certify that the well location shown on this plat was plotted from field notes of actual surveys made by me or under my supervision, and that the same is true and correct to the best of my belief.</p> <p>2-20-2017 Date of Survey</p> <p>Signature and Seal of Professional Surveyor</p> <p><i>Michael L. Stanford</i> 10324 Certificate Number</p>
	<p>Encore M State 020 Elev. 3368' NAD 83 NM East N = 498181' E = 896310' Lot. = 32°21'51.59" Long. = -103°11'01.25"</p>
	<p>M State Lease</p>

5.2 Miles SW of Eunice, New Mexico.

File No. A-11433

DISTRICT I

1625 N. French Dr., Hobbs, NM 88240
Phone: (575) 393-6161 Fax: (575) 393-0720

DISTRICT II

811 S. First St., Artesia, NM 88210
Phone: (575) 748-1283 Fax: (575) 748-9720

DISTRICT III

1000 Rio Brazos Road, Aztec, NM 87410
Phone: (505) 334-6178 Fax: (505) 334-6170

DISTRICT IV

1220 S. St. Francis Dr., Santa Fe, NM 87505
Phone: (505) 476-3460 Fax: (505) 476-3462

State of New Mexico
Energy, Minerals & Natural Resources Department
OIL CONSERVATION DIVISION
1220 South St. Francis Dr.
Santa Fe, NM 87505

Form C-102

Revised August 1, 2011

Submit one copy to appropriate
District Office

☐ AMENDED REPORT

WELL LOCATION AND ACREAGE DEDICATION PLAT

¹ API Number	² Pool Code 97857	³ Pool Name Wildcat Glorieta
⁴ Property Code	⁵ Property Name Encore M State	⁶ Well Number 020
⁷ GRID No. 370080	⁸ Operator Name Breitburn Operating LP	⁹ Elevation 3368'

¹⁰Surface Location

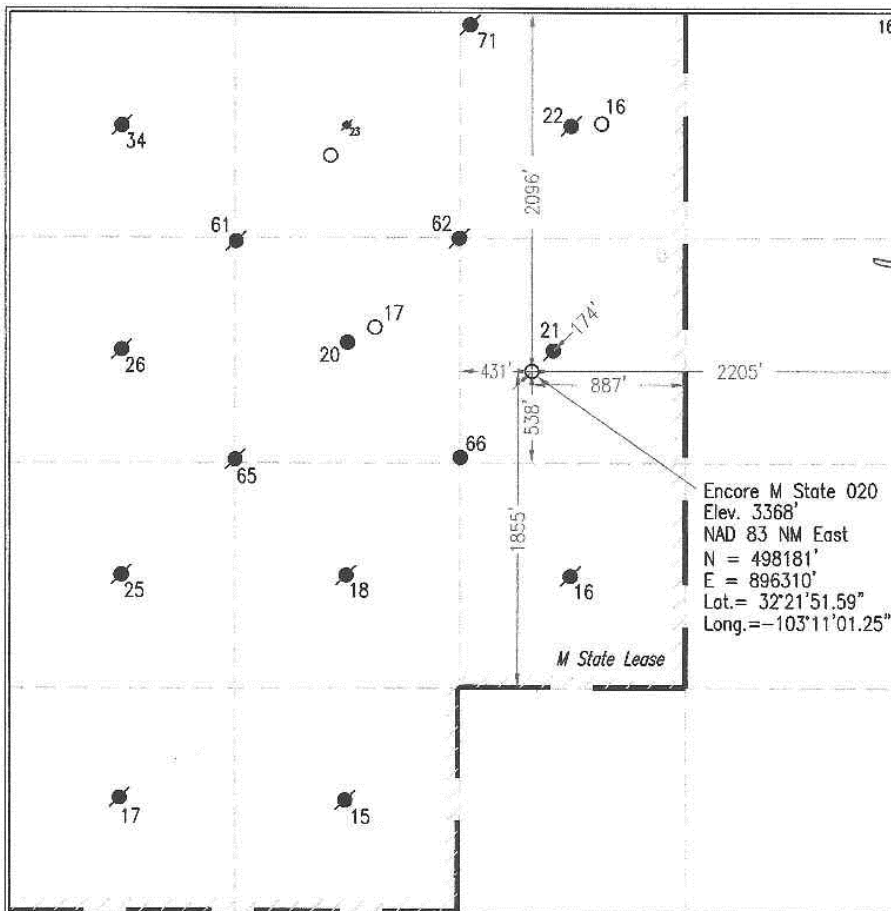
UL or lot no.	Section	Township	Range	Lot Idn	Feet from the	North/South line	Feet from the	East/West line	County
G	29	22 S	37 E		2096'	North	2205'	East	Lea

¹¹Bottom Hole Location If Different From Surface

UL or lot no.	Section	Township	Range	Lot Idn	Feet from the	North/South line	Feet from the	East/West line	County

¹² Dedicated Acres	¹³ Joint or Infill	¹⁴ Consolidation Code	¹⁵ Order No.

No allowable will be assigned to this completion until all interests have been consolidated or a non-standard unit has been approved by the division.

¹⁷OPERATOR CERTIFICATION

I hereby certify that the information contained herein is true and complete to the best of my knowledge and belief, and that this organization either owns a working interest or unleased mineral interest in the land including the proposed bottom hole location or has a right to drill this well at this location pursuant to a contract with an owner of such a mineral or working interest, or to a voluntary pooling agreement or a compulsory pooling order heretofore entered by the division.

Shelly Doescher 03/02/2017
Signature Date

Shelly Doescher

Printed Name

shelly_doescher@yahoo.com

E-mail Address

¹⁸SURVEYOR CERTIFICATION

I hereby certify that the well location shown on this plat was plotted from field notes of actual surveys made by me or under my supervision, and that the same is true and correct to the best of my belief.

2-20-2017

Date of Survey

Signature and Seal of Professional Surveyor

Michael L. Stanford
10324
Certificate Number



5.2 Miles SW of Eunice, New Mexico.

File No. A-11433

District I
1625 N. French Dr., Hobbs, NM 88240
Phone:(575) 393-6161 Fax:(575) 393-0720
District II
811 S. First St., Artesia, NM 88210
Phone:(575) 748-1283 Fax:(575) 748-9720
District III
1000 Rio Brazos Rd., Aztec, NM 87410
Phone:(505) 334-6178 Fax:(505) 334-6170
District IV
1220 S. St Francis Dr., Santa Fe, NM 87505
Phone:(505) 476-3470 Fax:(505) 476-3482

State of New Mexico
Energy, Minerals and Natural Resources
Oil Conservation Division
1220 S. St Francis Dr.
Santa Fe, NM 87505

Form APD Comments

Permit 232520

PERMIT COMMENTS

Operator Name and Address: BREITBURN OPERATING LP [370080] 1111 Bagby Street Houston, TX 77002	API Number: 30-025-43656
	Well: ENCORE M STATE #020

Created By	Comment	Comment Date
------------	---------	--------------

District I
1625 N. French Dr., Hobbs, NM 88240
Phone:(575) 393-8161 Fax:(575) 393-0720
District II
811 S. First St., Artesia, NM 88210
Phone:(575) 748-1283 Fax:(575) 748-9720
District III
1000 Rio Brazos Rd., Aztec, NM 87410
Phone:(505) 334-8178 Fax:(505) 334-8170
District IV
1220 S. St Francis Dr., Santa Fe, NM 87505
Phone:(505) 476-3470 Fax:(505) 476-3482

State of New Mexico
Energy, Minerals and Natural Resources
Oil Conservation Division
1220 S. St Francis Dr.
Santa Fe, NM 87505

Form APD Conditions

Permit 232520

PERMIT CONDITIONS OF APPROVAL

Operator Name and Address: BREITBURN OPERATING LP [370080] 1111 Bagby Street Houston, TX 77002	API Number: 30-025-43656
	Well: ENCORE M STATE #020

OCD Reviewer	Condition
pkautz	Once the well is spud, to prevent ground water contamination through whole or partial conduits from the surface, the operator shall drill without interruption through the fresh water zone or zones and shall immediately set in cement the water protection string
pkautz	Will require a deviation survey with the C-104
pkautz	1) SURFACE & INTERMEDIATE CASING - Cement must circulate to surface -- 2) PRODUCTION CASING - Cement must tie back into intermediate casing --
pkautz	If cement does not circulate to surface, must run temperature survey or other log to determine top of cement
pkautz	Surface casing must be set 25' below top of Rustler Anhydrite in order to seal off protectable water
pkautz	Only Fresh Water and Air are Valid Drilling Fluids for Surface Casing
pkautz	Operator shall notify appropriate District office when setting conductor pipe.
pkautz	The Operator is to notify NMOC by sundry (Form C-103) within ten (10) days of spudding a well.
pkautz	It is the operator's responsibility to monitor cancellation dates of approved APDs. APD's are good for 2 years and may be extended for one year. Only one 1 year extension will be granted if submitted by C-103 before expiration date. After expiration date or after a 1 year extension must submit new APD.
pkautz	Must notify OCD Hobbs Office of any water flows in the Salado Formation at 575-370-3186. Report depth and flow rate
pkautz	Stage Tool 1) Must notify OCD Hobbs Office prior to running Stage Tool at 575-370-3186 2) If using Stage Tool on Surface casing, Stage Tool must be set greater than 350' from surface and a minimum of 200 feet above surface shoe. 3) When using a Stage Tool on Intermediate or Production Casing Stage must be a minimum of 50 feet below previous casing shoe.
pkautz	Submit Gas Capture Plan form prior to spud