

District I
1625 N. French Dr., Hobbs, NM 88240
Phone:(575) 393-8161 Fax:(575) 393-0720
District II
811 S. First St., Artesia, NM 88210
Phone:(575) 748-1283 Fax:(575) 748-9720
District III
1000 Rio Brazos Rd., Aztec, NM 87410
Phone:(505) 334-8178 Fax:(505) 334-8170
District IV
1220 S. St Francis Dr., Santa Fe, NM 87505
Phone:(505) 476-3470 Fax:(505) 476-3462

State of New Mexico
Energy, Minerals and Natural Resources
Oil Conservation Division
1220 S. St Francis Dr.
Santa Fe, NM 87505

Form C-101
August 1, 2011
Permit 232848

APPLICATION FOR PERMIT TO DRILL, RE-ENTER, DEEPEN, PLUGBACK, OR ADD A ZONE

1. Operator Name and Address BC OPERATING, INC. P O Box 50820 Midland, TX 79710		2. OGRID Number 160825
4. Property Code 317507		3. API Number 30-015-44094
5. Property Name FIDDLE FEE 23 X		6. Well No. 001H

7. Surface Location

UL - Lot	H	Section	23	Township	24S	Range	28E	Lot Idn	Feet From	1650	N/S Line	N	Feet From	200	E/W Line	E	County	Eddy
----------	---	---------	----	----------	-----	-------	-----	---------	-----------	------	----------	---	-----------	-----	----------	---	--------	------

8. Proposed Bottom Hole Location

UL - Lot	E	Section	23	Township	24S	Range	28E	Lot Idn	E	Feet From	1650	N/S Line	N	Feet From	330	E/W Line	W	County	Eddy
----------	---	---------	----	----------	-----	-------	-----	---------	---	-----------	------	----------	---	-----------	-----	----------	---	--------	------

9. Pool Information

PURPLE SAGE;WOLFCAMP (GAS)	98220
----------------------------	-------

Additional Well Information

11. Work Type New Well	12. Well Type OIL	13. Cable/Rotary	14. Lease Type Private	15. Ground Level Elevation 2948
16. Multiple N	17. Proposed Depth 14350	18. Formation Wolfcamp	19. Contractor	20. Spud Date 4/25/2017
Depth to Ground water		Distance from nearest fresh water well		Distance to nearest surface water

☐ We will be using a closed-loop system in lieu of lined pits

21. Proposed Casing and Cement Program

Type	Hole Size	Casing Size	Casing Weight/ft	Setting Depth	Sacks of Cement	Estimated TOC
Surf	17.5	13.375	54.5	400	400	0
Int1	12.25	9.625	40	2650	1000	0
Prod	8.75	7	26	10100	750	0
Liner1	6.125	4.5	13.5	14350	400	9100

Casing/Cement Program: Additional Comments

--

22. Proposed Blowout Prevention Program

Type	Working Pressure	Test Pressure	Manufacturer
Double Ram	5000	5000	CAMERON

23. I hereby certify that the information given above is true and complete to the best of my knowledge and belief. I further certify I have complied with 19.15.14.9 (A) NMAC <input checked="" type="checkbox"/> and/or 19.15.14.9 (B) NMAC <input checked="" type="checkbox"/> if applicable. Signature: Printed Name: Electronically filed by Sarah Presley Title: Regulatory Analyst Email Address: spresley@bcoperating.com Date: 3/7/2017	<div style="text-align: center;">OIL CONSERVATION DIVISION</div> Approved By: Raymond Podany Title: Geologist Approved Date: 3/8/2017 Expiration Date: 3/8/2019 Conditions of Approval Attached
---	--

District I
1625 N. French Dr., Hobbs, NM 88240
Phone: (575) 393-6161 Fax: (575) 393-0720
District II
811 S. First St., Artesia, NM 88210
Phone: (575) 748-1283 Fax: (575) 748-9720
District III
1000 Rio Brazos Road, Aztec, NM 87410
Phone: (505) 334-6178 Fax: (505) 334-6170
District IV
1220 S. St. Francis Dr., Santa Fe, NM 87505
Phone: (505) 476-3460 Fax: (505) 476-3462

State of New Mexico
Energy, Minerals & Natural Resources Department
OIL CONSERVATION DIVISION
1220 South St. Francis Dr.
Santa Fe, NM 87505

Form C-102
Revised August 1, 2011
Submit one copy to appropriate
District Office
☐ AMENDED REPORT

WELL LOCATION AND ACREAGE DEDICATION PLAT

¹ API Number		² Pool Code 98220		³ Pool Name PURPLE SAGE; WOLFCAMP (GAS)	
⁴ Property Code		⁵ Property Name FIDDLE FEE 23 X			⁶ Well Number 1H
⁷ OGRID No. 160825		⁸ Operator Name B.C. OPERATING, INC.			⁹ Elevation 2948

¹⁰ Surface Location

UL or lot no.	Section	Township	Range	Lot Idn	Feet from the	North/South line	Feet from the	East/West line	County
H	23	T24S	R28E		1650	NORTH	200	EAST	EDDY

¹¹ Bottom Hole Location If Different From Surface

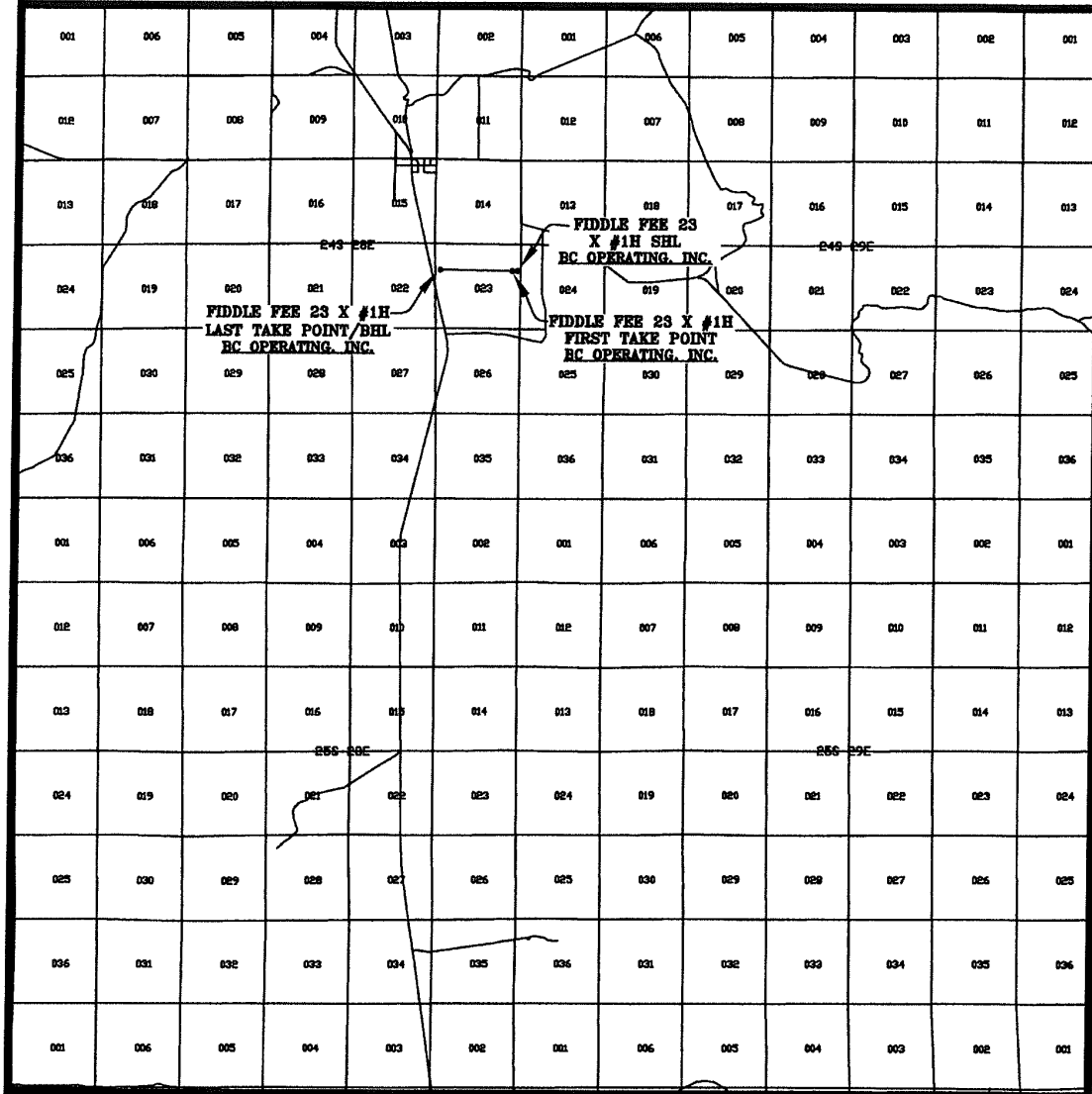
UL or lot no.	Section	Township	Range	Lot Idn	Feet from the	North/South line	Feet from the	East/West line	County
E	23	T24S	R28E		1650	NORTH	330	WEST	EDDY

¹² Dedicated Acres 320.00	¹³ Joint or Infill	¹⁴ Consolidation Code	¹⁵ Order No.
---	-------------------------------	----------------------------------	-------------------------

No allowable will be assigned to this completion until all interests have been consolidated or a non-standard unit has been approved by the division.

<p>¹⁶</p>		<p>¹⁷ OPERATOR CERTIFICATION I hereby certify that the information contained herein is true and complete to the best of my knowledge and belief, and that this organization either owns a working interest or unleased mineral interest in the land including the proposed bottom hole location or has a right to drill this well at this location pursuant to a contract with an owner of such a mineral or working interest, or to a voluntary pooling agreement or a compulsory pooling order heretofore entered by the division.</p> <p><i>Sarah Presley</i> 3-7-17 Signature Date</p> <p>SARAH PRESLEY Printed Name</p> <p>SPRESLEY@BCOPERATING.COM E-mail Address</p>
<p>LAST TAKE POINT/BOTTOM HOLE LOCATION 1650' FNL 330' FVL, SECTION 23 NAD 83, SPCS NM EAST Y438851.06 / X624050.98 LAT32.20619525N / LON104.06390356W NAD 27, SPCS NM EAST Y438792.51 / X582867.36 LAT32.20607334N / LON104.0654143W</p>		<p>¹⁸ SURVEYOR CERTIFICATION I hereby certify that the well location shown on this plat was plotted from field notes of actual surveys made by me or under my supervision, and that the same is true and correct to the best of my belief.</p> <p>MARCH 02, 2017 Date of Survey</p> <p>Signature and Seal of Professional Surveyor <i>Lloyd P. Short</i> Certificate Number LLOYD P. SHORT 21653</p>
<p>CORNER COORDINATES NAD 83, SPCS NM EAST A - Y: 440506.10 / X: 623685.59 B - Y: 440429.80 / X: 629199.00 C - Y: 437761.72 / X: 629179.23 D - Y: 437828.38 / X: 623742.74</p>		<p>SURFACE HOLE LOCATION 1650' FNL 200' FEL, SECTION 23 NAD 83, SPCS NM EAST Y438786.87 / X628676.81 LAT32.20598677N / LON104.05095012W NAD 27, SPCS NM EAST Y438728.26 / X587493.10 LAT32.20586463N / LON104.05045933W</p>

VICINITY MAP



SEC. 23 TWP. 24-S RGE. 28-E
 SURVEY: N.M.P.M.
 COUNTY: EDDY
 DESCRIPTION: 1650' FNL & 200' FEL
 ELEVATION: 2948'
 OPERATOR: B.C. OPERATING, INC.
 LEASE: FIDDLE FEE 23 X
 U.S.G.S. TOPOGRAPHIC MAP: MALAGA, N.M.

SCALE: 1" = 2 MILES

PREPARED BY:
 R-SQUARED GLOBAL, LLC
 1309 LOUISVILLE AVENUE, MONROE, LA 71201
 318-323-8900 OFFICE
 JOB No. RS724-01

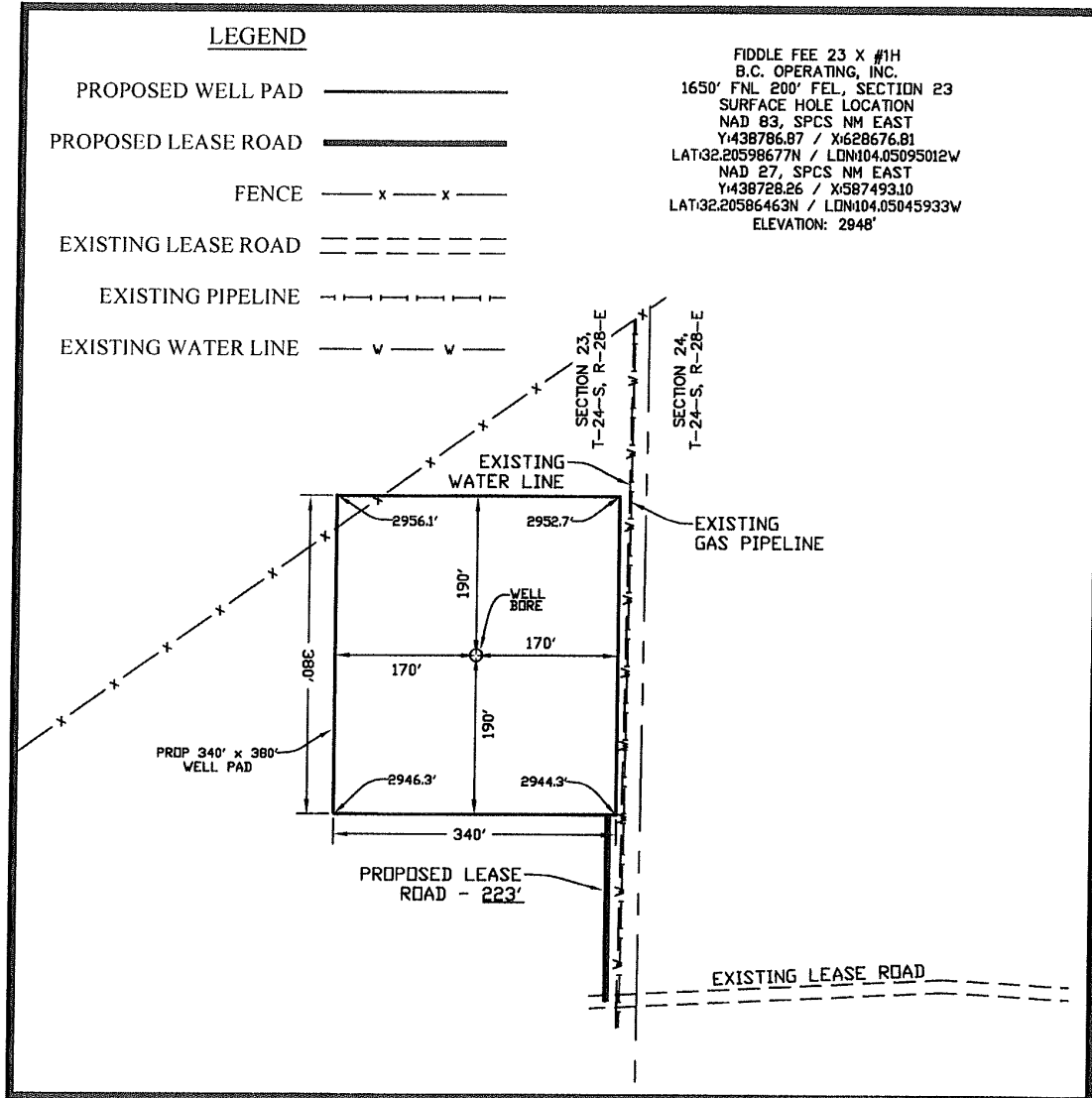
WELL PAD TOPO

SEC. 23 TWP. 24-S RGE. 28-E

SURVEY: N.M.P.M.

COUNTY: EDDY

U.S.G.S. TOPOGRAPHIC MAP: MALAGA, N.M.



DIRECTIONS TO LOCATION:

FROM THE INTERSECTION OF U.S. HIGHWAY 62/WEST GREENE STREET AND U.S. 180 W./U.S. 62 W./S. CANAL STREET IN CARLESBAD, NEW MEXICO, TRAVEL SOUTH ON U.S. 62 W./S. CANAL STREET TOWARD W. TANSILL ST. FOR 2.0 MILES TO A SLIGHT LEFT ONTO U.S. 285 SOUTH. TRAVEL SOUTH ON U.S. 285 SOUTH FOR 15.0 MILES TO DUARTE ROAD ON THE LEFT. TRAVEL EAST ON DUARTE ROAD FOR 1.3 MILES TO McDONALD ROAD ON THE RIGHT. TRAVEL SOUTH ON McDONALD ROAD FOR 1.0 MILE TO PULLEY ROAD ON THE RIGHT. TRAVEL SOUTH ON PULLEY ROAD FOR 0.6 MILES TO A LEASE ROAD ON THE RIGHT. TRAVEL WEST ON LEASE ROAD FOR 0.3 MILES TO PROPOSED WELL 425 FEET TO THE RIGHT.

NOTE:

THIS IS NOT A BOUNDARY SURVEY, APPARENT PROPERTY CORNERS AND PROPERTY LINES ARE SHOWN FOR INFORMATION ONLY. BOUNDARY DATA SHOWN IS FROM STATE OF NEW MEXICO OIL CONSERVATION DIVISION FORM C-102 INCLUDED IN THIS SUBMITTAL.

100' 0' 100' 200'
SCALE: 1" = 200'

MARCH 02, 2017



LLOYD P. SHORT 21653

PREPARED BY:
R-SQUARED GLOBAL, LLC
1309 LOUISVILLE AVENUE, MONROE, LA 71201
318-323-8900 OFFICE
JOB No. R3724-01

District I
1625 N. French Dr., Hobbs, NM 88240
Phone:(575) 393-6161 Fax:(575) 393-0720
District II
811 S. First St., Artesia, NM 88210
Phone:(575) 748-1283 Fax:(575) 748-9720
District III
1000 Rio Brazos Rd., Aztec, NM 87410
Phone:(505) 334-6178 Fax:(505) 334-6170
District IV
1220 S. St Francis Dr., Santa Fe, NM 87505
Phone:(505) 476-3470 Fax:(505) 476-3482

State of New Mexico
Energy, Minerals and Natural Resources
Oil Conservation Division
1220 S. St Francis Dr.
Santa Fe, NM 87505

Form APD Comments

Permit 232848

PERMIT COMMENTS

Operator Name and Address: BC OPERATING, INC. [160825] P O Box 50820 Midland, TX 79710	API Number: 30-015-44094
	Well: FIDDLE FEE 23 X #001H

Created By	Comment	Comment Date
------------	---------	--------------

District I
1625 N. French Dr., Hobbs, NM 88240
Phone:(575) 393-6161 Fax:(575) 393-0720
District II
811 S. First St., Artesia, NM 88210
Phone:(575) 749-1283 Fax:(575) 749-9720
District III
1000 Rio Brazos Rd., Aztec, NM 87410
Phone:(505) 334-6178 Fax:(505) 334-6170
District IV
1220 S. St Francis Dr., Santa Fe, NM 87505
Phone:(505) 476-3470 Fax:(505) 476-3462

State of New Mexico
Energy, Minerals and Natural Resources
Oil Conservation Division
1220 S. St Francis Dr.
Santa Fe, NM 87505

Form APD Conditions

Permit 232848

PERMIT CONDITIONS OF APPROVAL

Operator Name and Address: BC OPERATING, INC. [160825] P O Box 50820 Midland, TX 79710	API Number: 30-015-44094
	Well: FIDDLE FEE 23 X #001H

OCD Reviewer	Condition
RPodany	Will require a directional survey with the C-104
RPodany	Cement is required to circulate on both surface and intermediate1 strings of casing