

District I
1625 N. French Dr., Hobbs, NM 88240
Phone:(575) 393-8161 Fax:(575) 393-0720
District II
811 S. First St., Artesia, NM 88210
Phone:(575) 748-1283 Fax:(575) 748-9720
District III
1000 Rio Brazos Rd., Aztec, NM 87410
Phone:(505) 334-8178 Fax:(505) 334-8170
District IV
1220 S. St Francis Dr., Santa Fe, NM 87505
Phone:(505) 476-3470 Fax:(505) 476-3482

State of New Mexico
Energy, Minerals and Natural Resources
Oil Conservation Division
1220 S. St Francis Dr.
Santa Fe, NM 87505

Form C-101
August 1, 2011
Permit 235749

APPLICATION FOR PERMIT TO DRILL, RE-ENTER, DEEPEN, PLUGBACK, OR ADD A ZONE

1. Operator Name and Address OXY USA WTP LIMITED PARTNERSHIP PO Box 4294 Houston, TX 77210		2. OGRID Number 192463
4. Property Code 317700		3. API Number 30-015-44159
5. Property Name TURKEY TRACK 8 7 STATE		6. Well No. 033H

7. Surface Location

UL - Lot	Section	Township	Range	Lot Idn	Feet From	N/S Line	Feet From	E/W Line	County
L	9	19S	29E		1444	S	570	W	Eddy

8. Proposed Bottom Hole Location

UL - Lot	Section	Township	Range	Lot Idn	Feet From	N/S Line	Feet From	E/W Line	County
L	7	19S	29E	3	1948	S	180	W	Eddy

9. Pool Information

TURKEY TRACK;BONE SPRING	60660
--------------------------	-------

Additional Well Information

11. Work Type New Well	12. Well Type OIL	13. Cable/Rotary	14. Lease Type State	15. Ground Level Elevation 3382
16. Multiple N	17. Proposed Depth 19319	18. Formation 3rd Bone Spring Sand	19. Contractor	20. Spud Date 3/5/2018
Depth to Ground water		Distance from nearest fresh water well		Distance to nearest surface water

☒ We will be using a closed-loop system in lieu of lined pits

21. Proposed Casing and Cement Program

Type	Hole Size	Casing Size	Casing Weight/ft	Setting Depth	Sacks of Cement	Estimated TOC
Surf	17.5	13.375	54.5	400	336	0
Int1	12.25	9.625	43.5	8182	1506	0
Prod	8.5	5.5	20	19319	1878	7682

Casing/Cement Program: Additional Comments

Proposed Casing/Cementing Program: Production 1 – Contingency DVT/ECP @ +/- 3150'. If cement circulates to surface during primary cementing operation, DVT cancellation cone will be run and 2nd stage cancelled. Proposed intermediate casing consisting of 9-5/8" 43.5# HCL-80 @ 0-7500' followed by 9-5/8" 47# HCL-80 @ 7500-8182'. Proposed Mud Program: 0-400' Water-based Mud - 400-3150' Brine - 3150-8182' Water-based Mud - 8182'-TD Oil-based Mud. BOP Program: 13-5/8" 5M three ram stack w/ 5M annular preventer, 5M choke manifold. Additional information will be sent along with the H2S and Gas Capture plan.

22. Proposed Blowout Prevention Program

Type	Working Pressure	Test Pressure	Manufacturer
Annular	5000	5000	
Double Ram	5000	5000	

23. I hereby certify that the information given above is true and complete to the best of my knowledge and belief. I further certify I have complied with 19.15.14.9 (A) NMAC <input checked="" type="checkbox"/> and/or 19.15.14.9 (B) NMAC <input checked="" type="checkbox"/> , if applicable. Signature:	OIL CONSERVATION DIVISION
Printed Name: Electronically filed by KELLEY MONTGOMERY Title: Manager Regulatory Email Address: kelley_montgomery@oxy.com Date: 5/8/2017	Approved By: Raymond Podany Title: Geologist Approved Date: 5/9/2017 Expiration Date: 5/9/2019 Conditions of Approval Attached

District I
1621 N. French Dr., Hobbs, NM 88240
Phone: (505) 303-6161 Fax: (505) 303-0720
District II
511 S. First St., Artesia, NM 88210
Phone: (505) 748-1283 Fax: (505) 748-0720
District III
1000 Rio Grande Blvd., Las Vegas, NM 87710
Phone: (505) 334-6179 Fax: (505) 334-6170
District IV
1220 S. St. Francis Dr., Santa Fe, NM 87505
Phone: (505) 476-3460 Fax: (505) 476-3462

State of New Mexico
Energy, Minerals & Natural Resources Department
OIL CONSERVATION DIVISION
1220 South St. Francis Dr.
Santa Fe, NM 87505

Form C-102
Revised August 1, 2011
Submit one copy to appropriate
District Office

☐ AMENDED REPORT

WELL LOCATION AND ACREAGE DEDICATION PLAT

API Number 30-015-	Pool Code 60/660	Pool Name Turkey Track; Bone Spring
Property Code	Property Name TURKEY TRACK "8-7" STATE	Well Number 33H
OGRID No. 192463	Operator Name OXY USA WTP LP	Elevation 3382.9'

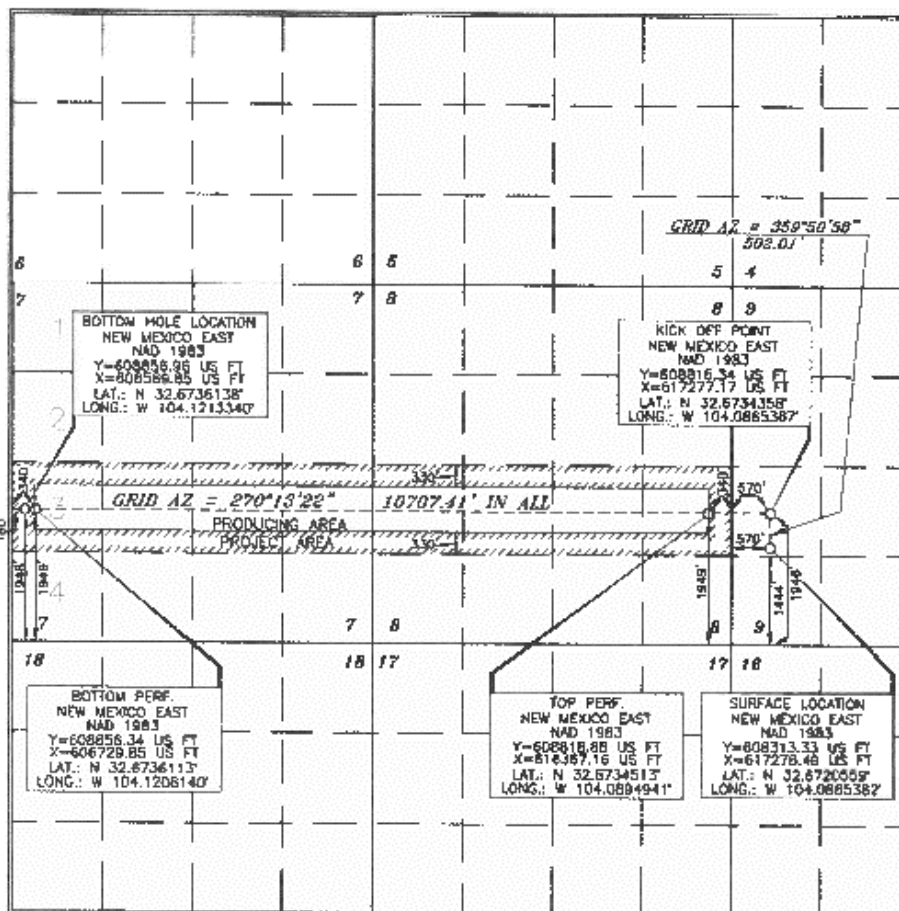
Surface Location

UL or lot no.	Section	Township	Range	Lat Idn	Feet from the	North/South line	Feet from the	East/West line	County
L	9	19 SOUTH	29 EAST, N.M.P.M.		1444'	SOUTH	570'	WEST	EDDY

Bottom Hole Location If Different From Surface

UL or lot no.	Section	Township	Range	Lat Idn	Feet from the	North/South line	Feet from the	East/West line	County
3	7	19 SOUTH	29 EAST, N.M.P.M.		1948'	SOUTH	180'	WEST	EDDY
Dedicated Acres 312.78	Joint or Infill Y	Consolidation Code	Order No.						

No allowable will be assigned to this completion until all interests have been consolidated or a non-standard unit has been approved by the division.



OPERATOR CERTIFICATION

I hereby certify that the information contained herein is true and complete to the best of my knowledge and belief, and that this organization either owns a working interest or mineral interest in the land including the proposed bottom hole location or has a right to drill this well at this location pursuant to a contract with an owner of such a mineral or working interest, or to a voluntary pooling agreement or a compulsory pooling order heretofore executed by the division.

Signature: Justin Morris Date: 5/8/17
Printed Name: Justin Morris
E-mail Address: Justin.Morris@oxy.com

SURVEYOR CERTIFICATION

I hereby certify that the well location shown on this plat was plotted from professional surveys made by me or under my supervision, and that the same is true and correct to the best of my belief.

Date of Survey: MARCH 8 2017
Signature and Seal of Professional Land Surveyor: Terry J. As...
Certificate Number: 15079

WO# 170308WL-a (KA)

District I
 1625 N. French Dr., Hobbs, NM 88240
 Phone:(575) 393-8161 Fax:(575) 393-0720
District II
 811 S. First St., Artesia, NM 88210
 Phone:(575) 748-1283 Fax:(575) 748-9720
District III
 1000 Rio Brazos Rd., Aztec, NM 87410
 Phone:(505) 334-8178 Fax:(505) 334-8170
District IV
 1220 S. St Francis Dr., Santa Fe, NM 87505
 Phone:(505) 476-3470 Fax:(505) 476-3482

State of New Mexico
Energy, Minerals and Natural Resources
Oil Conservation Division
1220 S. St Francis Dr.
Santa Fe, NM 87505

Form APD Comments

Permit 235749

PERMIT COMMENTS

Operator Name and Address: OXY USA WTP LIMITED PARTNERSHIP [192463] PO Box 4294 Houston, TX 77210		API Number: 30-015-44159
		Well: TURKEY TRACK 8 7 STATE #033H

Created By	Comment	Comment Date
justinmorris	Top Perforated Interval: 1949 FSL 340 FEL I 8-19S-29E - Lat: 32.6734513 Long: 104.0894941 Bottom Perforated Interval: 1949 FSL 340 FWL 3 7-19S-29E - Lat: 32.6736113 Long: 104.1208140 A closed loop system will be utilized consisting of above ground steel tanks and haul-off bins. Disposal of liquids, drilling fluids and cuttings will be disposed of at an approved facility.	5/8/2017
justinmorris	Oxy requests the option to contract a Surface Rig to drill, set surface casing, and cement for this well. If the timing between rigs is such that Oxy would not be able to preset surface, the Primary Rig will MIRU and drill the well in its entirety per the APD. Additional information on the spudder rig will be sent with the H2S and Gas Capture Plan.	5/8/2017
justinmorris	This well is a 3rd Bone Spring completion and will share spacing units with the TURKEY TRACK 8-7 STATE #023H, which will be a 2nd Bone Spring completion.	5/8/2017

District I
1625 N. French Dr., Hobbs, NM 88240
Phone:(575) 393-8161 Fax:(575) 393-0720
District II
811 S. First St., Artesia, NM 88210
Phone:(575) 748-1283 Fax:(575) 748-9720
District III
1000 Rio Brazos Rd., Aztec, NM 87410
Phone:(505) 334-8178 Fax:(505) 334-6170
District IV
1220 S. St Francis Dr., Santa Fe, NM 87505
Phone:(505) 476-3470 Fax:(505) 476-3482

State of New Mexico
Energy, Minerals and Natural Resources
Oil Conservation Division
1220 S. St Francis Dr.
Santa Fe, NM 87505

Form APD Conditions

Permit 235749

PERMIT CONDITIONS OF APPROVAL

Operator Name and Address: OXY USA WTP LIMITED PARTNERSHIP [192463] PO Box 4294 Houston, TX 77210		API Number: 30-015-44159
		Well: TURKEY TRACK 8 7 STATE #033H
OCD Reviewer	Condition	
RPodany	Will require a directional survey with the C-104	
RPodany	Cement is required to circulate on both surface and intermediate1 strings of casing	