

**District I**  
1625 N. French Dr., Hobbs, NM 88240  
Phone:(575) 393-6161 Fax:(575) 393-0720

**District II**  
811 S. First St., Artesia, NM 88210  
Phone:(575) 748-1283 Fax:(575) 748-9720

**District III**  
1000 Rio Brazos Rd., Aztec, NM 87410  
Phone:(505) 334-6178 Fax:(505) 334-6170

**District IV**  
1220 S. St Francis Dr., Santa Fe, NM 87505  
Phone:(505) 476-3470 Fax:(505) 476-3462

**State of New Mexico**  
**Energy, Minerals and Natural Resources**  
**Oil Conservation Division**  
**1220 S. St Francis Dr.**  
**Santa Fe, NM 87505**

Form C-101  
August 1, 2011  
Permit 240208

**APPLICATION FOR PERMIT TO DRILL, RE-ENTER, DEEPEN, PLUGBACK, OR ADD A ZONE**

1. Operator Name and Address KAISER-FRANCIS OIL CO 6733 S Yale Ave Tulsa, OK, OK 74136		2. OGRID Number 12361
4. Property Code 316706		3. API Number 30-025-44020
5. Property Name BELL LAKE UNIT SOUTH		6. Well No. 219H

**7. Surface Location**

UL - Lot L	Section 1	Township 24S	Range 33E	Lot Idn L	Feet From 2214	N/S Line S	Feet From 531	E/W Line W	County Lea
---------------	--------------	-----------------	--------------	--------------	-------------------	---------------	------------------	---------------	---------------

**8. Proposed Bottom Hole Location**

UL - Lot D	Section 36	Township 23S	Range 33E	Lot Idn D	Feet From 330	N/S Line N	Feet From 350	E/W Line W	County Lea
---------------	---------------	-----------------	--------------	--------------	------------------	---------------	------------------	---------------	---------------

**9. Pool Information**

BELL LAKE;BONE SPRING, NORTH	5150
------------------------------	------

**Additional Well Information**

11. Work Type New Well	12. Well Type OIL	13. Cable/Rotary	14. Lease Type State	15. Ground Level Elevation 3633
16. Multiple N	17. Proposed Depth 18499	18. Formation Bone Spring	19. Contractor	20. Spud Date 12/15/2017
Depth to Ground water		Distance from nearest fresh water well		Distance to nearest surface water

☒ We will be using a closed-loop system in lieu of lined pits

**21. Proposed Casing and Cement Program**

Type	Hole Size	Casing Size	Casing Weight/ft	Setting Depth	Sacks of Cement	Estimated TOC
Surf	17.5	13.375	54.5	1250	1060	0
Int1	12.25	9.625	40	5200	1200	0
Prod	8.75	5.5	20	18499	2200	4700

**Casing/Cement Program: Additional Comments**

--

**22. Proposed Blowout Prevention Program**

Type	Working Pressure	Test Pressure	Manufacturer
Double Ram	10000	5000	Cameron

23. I hereby certify that the information given above is true and complete to the best of my knowledge and belief. I further certify I have complied with 19.15.14.9 (A) NMAC <input checked="" type="checkbox"/> and/or 19.15.14.9 (B) NMAC <input checked="" type="checkbox"/> if applicable.  Signature:	<b>OIL CONSERVATION DIVISION</b>
Printed Name: Electronically filed by Kristin L Gray	Approved By: Paul Kautz
Title:	Title: Geologist
Email Address: kristing@kfoc.net	Approved Date: 9/18/2017      Expiration Date: 9/18/2019
Date: 9/18/2017      Phone: 918-491-4209	Conditions of Approval Attached

DISTRICT I  
1625 N. French Dr., Hobbs, NM 88240  
Phone: (575) 393-6161 Fax: (575) 393-0720

DISTRICT II  
811 S. First St., Artesia, NM 88210  
Phone: (575) 748-1283 Fax: (575) 748-9720

DISTRICT III  
1000 Rio Brazos Road, Aztec, NM 87410  
Phone: (505) 334-6178 Fax: (505) 334-6170

DISTRICT IV  
1220 S. St. Francis Dr., Santa Fe, NM 87505  
Phone: (505) 476-3460 Fax: (505) 476-3462

State of New Mexico  
Energy, Minerals & Natural Resources Department  
OIL CONSERVATION DIVISION  
1220 South St. Francis Dr.  
Santa Fe, New Mexico 87505

Form C-102  
Revised August 1, 2011  
Submit one copy to appropriate  
District Office

AMENDED REPORT

WELL LOCATION AND ACREAGE DEDICATION PLAT

API Number	Pool Code	Pool Name
	5150	Bell Lake Bone Spring, North
Property Code	Property Name	Well Number
316706	BELL LAKE UNIT SOUTH	219H
OGRID No.	Operator Name	Elevation
12361	KAISER-FRANCIS OIL COMPANY	3633'

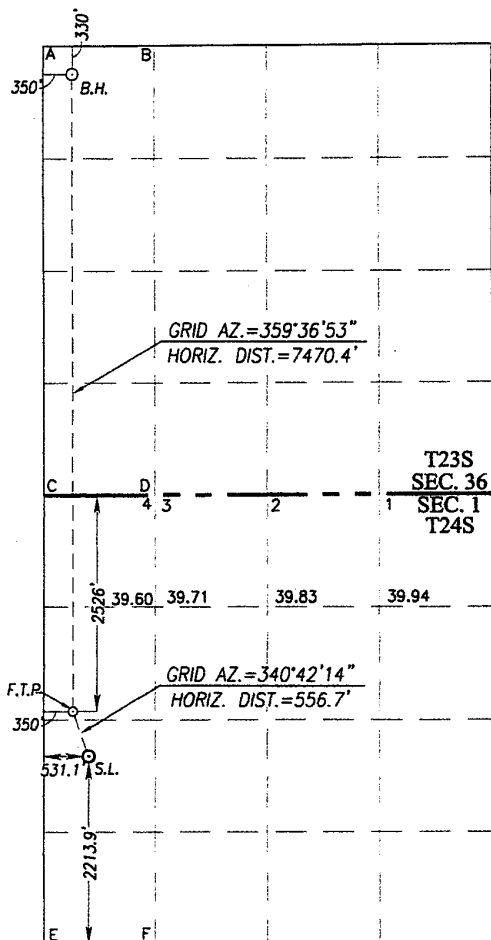
Surface Location

UL or lot No.	Section	Township	Range	Lot Idn	Feet from the	North/South line	Feet from the	East/West line	County
L	1	24-S	33-E		2213.9	SOUTH	531.1	WEST	LEA

Bottom Hole Location If Different From Surface

UL or lot No.	Section	Township	Range	Lot Idn	Feet from the	North/South line	Feet from the	East/West line	County
D	36	23-S	33-E		330	NORTH	350	WEST	LEA
Dedicated Acres	Joint or Infill	Consolidation Code	Order No.						
160									

NO ALLOWABLE WILL BE ASSIGNED TO THIS COMPLETION UNTIL ALL INTERESTS HAVE BEEN CONSOLIDATED OR A NON-STANDARD UNIT HAS BEEN APPROVED BY THE DIVISION



SCALE: 1"=2000'

BOTTOM HOLE LOCATION  
NAD 83 NME  
Y= 461952.0 N  
X= 788568.4 E  
LAT.=32.267448" N  
LONG.=103.533464" W

BOTTOM HOLE LOCATION  
NAD 27 NME  
Y= 461892.8 N  
X= 747384.7 E  
LAT.=32.267324" N  
LONG.=103.532985" W

CORNER COORDINATES TABLE

NAD 27 NME  
A - Y= 462219.8 N, X= 747032.5 E  
B - Y= 462230.8 N, X= 748351.1 E  
C - Y= 456947.4 N, X= 747071.8 E  
D - Y= 456955.5 N, X= 748391.2 E  
E - Y= 451683.5 N, X= 747099.7 E  
F - Y= 451688.5 N, X= 748422.0 E

CORNER COORDINATES TABLE

NAD 83 NME  
A - Y= 462279.1 N, X= 788216.1 E  
B - Y= 462290.0 N, X= 789534.8 E  
C - Y= 457006.5 N, X= 788255.6 E  
D - Y= 457014.5 N, X= 789575.0 E  
E - Y= 451742.4 N, X= 788283.7 E  
F - Y= 451747.4 N, X= 789606.0 E

FIRST TAKE POINT  
NAD 83 NME  
Y= 454483.2 N  
X= 788618.6 E  
LAT.=32.246918" N  
LONG.=103.533482" W

FIRST TAKE POINT  
NAD 27 NME  
Y= 454424.2 N  
X= 747434.7 E  
LAT.=32.246794" N  
LONG.=103.533003" W

GEODETIC COORDINATES  
NAD 83 NME  
SURFACE LOCATION  
Y= 453957.9 N  
X= 788802.5 E  
LAT.=32.245471" N  
LONG.=103.532900" W

GEODETIC COORDINATES  
NAD 27 NME  
SURFACE LOCATION  
Y= 453899.0 N  
X= 747618.6 E  
LAT.=32.245347" N  
LONG.=103.532421" W

OPERATOR CERTIFICATION

I hereby certify that the information herein is true and complete to the best of my knowledge and belief, and that this organization either owns a working interest or unleased mineral interest in the land including the proposed bottom hole location or has a right to drill this well at this location pursuant to a contract with an owner of such mineral or working interest, or to a voluntary pooling agreement or a compulsory pooling order heretofore entered by the division.

*C. Jan Valkenburg*  
8/10/17  
Signature Date

Charlotte Van Valkenburg  
Printed Name

Charlotv@kfoc.net  
E-mail Address

SURVEYOR CERTIFICATION

I hereby certify that the well location shown on this plat was plotted from field notes of actual surveys made by me or under my supervision, and that the same is true and correct to the best of my belief.

APRIL 11, 2017

Date of Survey  
Signature & Seal of Professional Surveyor:

*Ronald F. Eidson*  
3239  
NEW MEXICO  
REGISTERED  
3239  
Certificate Number: Gary G. Eidson 12641  
Ronald F. Eidson 3239  
ACK REL. W.O.: 1711022 JWSC W.O.: 17.11.0771

**District I**  
1625 N. French Dr., Hobbs, NM 88240  
Phone:(575) 393-6161 Fax:(575) 393-0720  
**District II**  
811 S. First St., Artesia, NM 88210  
Phone:(575) 748-1283 Fax:(575) 748-9720  
**District III**  
1000 Rio Brazos Rd., Aztec, NM 87410  
Phone:(505) 334-6178 Fax:(505) 334-6170  
**District IV**  
1220 S. St Francis Dr., Santa Fe, NM 87505  
Phone:(505) 476-3470 Fax:(505) 476-3462

**State of New Mexico**  
**Energy, Minerals and Natural Resources**  
**Oil Conservation Division**  
**1220 S. St Francis Dr.**  
**Santa Fe, NM 87505**

Form APD Comments

Permit 240208

**PERMIT COMMENTS**

Operator Name and Address: KAISER-FRANCIS OIL CO [12361] 6733 S Yale Ave Tulsa, OK, OK 74136		API Number: 30-025-44020
		Well: BELL LAKE UNIT SOUTH #219H
Created By	Comment	Comment Date
pkautz	out of compliance with inactive wells	8/10/2017

**District I**  
 1625 N. French Dr., Hobbs, NM 88240  
 Phone:(575) 393-6161 Fax:(575) 393-0720

**District II**  
 811 S. First St., Artesia, NM 88210  
 Phone:(575) 748-1283 Fax:(575) 748-9720

**District III**  
 1000 Rio Brazos Rd., Aztec, NM 87410  
 Phone:(505) 334-6178 Fax:(505) 334-6170

**District IV**  
 1220 S. St Francis Dr., Santa Fe, NM 87505  
 Phone:(505) 476-3470 Fax:(505) 476-3462

**State of New Mexico**  
**Energy, Minerals and Natural Resources**  
**Oil Conservation Division**  
**1220 S. St Francis Dr.**  
**Santa Fe, NM 87505**

Form APD Conditions

Permit 240208

**PERMIT CONDITIONS OF APPROVAL**

Operator Name and Address: KAISER-FRANCIS OIL CO [12361] 6733 S Yale Ave Tulsa, OK, OK 74136	API Number: 30-025-44020
	Well: BELL LAKE UNIT SOUTH #219H

OCD Reviewer	Condition
pkautz	Once the well is spud, to prevent ground water contamination through whole or partial conduits from the surface, the operator shall drill without interruption through the fresh water zone or zones and shall immediately set in cement the water protection string
pkautz	Pit construction and closure must satisfy all requirements of your approved plan.
pkautz	If using a pit for drilling and completion operations, must have an approved pit from prior to spudding the well.
pkautz	1) SURFACE & INTERMEDIATE CASING - Cement must circulate to surface -- 2) PRODUCTION CASING - Cement must tie back into intermediate casing --
pkautz	If cement does not circulate to surface, must run temperature survey or other log to determine top of cement
pkautz	Surface casing must be set 25' below top of Rustler Anhydrite in order to seal off protectable water
pkautz	Only Fresh Water and Air are Valid Drilling Fluids for Surface Casing
pkautz	Operator shall notify appropriate District office when setting conductor pipe.
pkautz	1)- The Operator is to notify NMOCD by sundry (Form C-103) within ten (10) days of the well being spud 2)- Drilling Sundries Form C-103 (Casing and Cement test are to be submitted within 10 days 3)- Completion Reports & Logs are to be submitted within 20 days 4)- Deviation / Directional Drill Survey are to be filed with or prior to C-104
pkautz	It is the operator's responsibility to monitor cancellation dates of approved APDs. APD's are good for 2 years and may be extended for one year. Only one 1 year extension will be granted if submitted by C-103 before expiration date. After expiration date or after a 1 year extension must submit new APD.
pkautz	If an APD expires and if site construction has occurred, site remediation is required.
pkautz	Stage Tool - 1) Must notify OCD Hobbs Office prior to running Stage Tool at 575-370-3186 2) If using Stage Tool on Surface casing, Stage Tool must be set greater than 350' from surface and a minimum of 200 feet above surface shoe. 3) When using a Stage Tool on Intermediate or Production Casing Stage must be a minimum of 50 feet below previous casing shoe.
pkautz	Gas Capture Plan - Operator to Submit Gas Capture Plan form prior spud