

District I
1625 N. French Dr., Hobbs, NM 88240
Phone:(575) 393-6161 Fax:(575) 393-0720

District II
811 S. First St., Artesia, NM 88210
Phone:(575) 748-1283 Fax:(575) 748-9720

District III
1000 Rio Brazos Rd., Aztec, NM 87410
Phone:(505) 334-6178 Fax:(505) 334-6170

District IV
1220 S. St Francis Dr., Santa Fe, NM 87505
Phone:(505) 476-3470 Fax:(505) 476-3462

State of New Mexico
Energy, Minerals and Natural Resources
Oil Conservation Division
1220 S. St Francis Dr.
Santa Fe, NM 87505

Form C-101
August 1, 2011
Permit 246975

APPLICATION FOR PERMIT TO DRILL, RE-ENTER, DEEPEN, PLUGBACK, OR ADD A ZONE

1. Operator Name and Address ASCENT ENERGY, LLC. 1621 18th St Denver, CO 80202		2. OGRID Number 325830
4. Property Code 320686		3. API Number 30-025-44415
5. Property Name HONEY BADGER FEE		6. Well No. 701H

7. Surface Location

UL - Lot M	Section 1	Township 19S	Range 34E	Lot Idn M	Feet From 850	N/S Line S	Feet From 90	E/W Line W	County Lea
---------------	--------------	-----------------	--------------	--------------	------------------	---------------	-----------------	---------------	---------------

8. Proposed Bottom Hole Location

UL - Lot P	Section 1	Township 19S	Range 34E	Lot Idn P	Feet From 1020	N/S Line S	Feet From 330	E/W Line E	County Lea
---------------	--------------	-----------------	--------------	--------------	-------------------	---------------	------------------	---------------	---------------

9. Pool Information

AIRSTRIP;WOLFCAMP	970
-------------------	-----

Additional Well Information

11. Work Type New Well	12. Well Type OIL	13. Cable/Rotary	14. Lease Type Private	15. Ground Level Elevation 3967
16. Multiple N	17. Proposed Depth 15672	18. Formation Wolfcamp	19. Contractor	20. Spud Date 8/1/2018
Depth to Ground water		Distance from nearest fresh water well		Distance to nearest surface water

☒ We will be using a closed-loop system in lieu of lined pits

21. Proposed Casing and Cement Program

Type	Hole Size	Casing Size	Casing Weight/ft	Setting Depth	Sacks of Cement	Estimated TOC
Surf	17.5	13.375	54.5	1888	1265	0
Int1	12.615	9.625	40	5730	1710	0
Prod	8.835	5.5	20	15672	2780	4730

Casing/Cement Program: Additional Comments

--

22. Proposed Blowout Prevention Program

Type	Working Pressure	Test Pressure	Manufacturer
Double Ram	3000	3000	

23. I hereby certify that the information given above is true and complete to the best of my knowledge and belief. I further certify I have complied with 19.15.14.9 (A) NMAC <input checked="" type="checkbox"/> and/or 19.15.14.9 (B) NMAC <input checked="" type="checkbox"/> if applicable. Signature:	OIL CONSERVATION DIVISION
Printed Name: Electronically filed by Jody C Robins	Approved By: Paul Kautz
Title: VP Drilling	Title: Geologist
Email Address: jrobins@ascentenergy.us	Approved Date: 2/1/2018 Expiration Date: 2/1/2020
Date: 1/31/2018 Phone: 720-710-8999	Conditions of Approval Attached

District I
1625 N. French Dr., Hobbs, NM 88240
Phone: (575) 393-6161 Fax: (575) 393-0720
District II
811 S. First St., Artesia, NM 88210
Phone: (575) 748-1283 Fax: (575) 748-9720
District III
1000 Rio Brazos Road, Aztec, NM 87410
Phone: (505) 334-6178 Fax: (505) 334-6170
District IV
1220 S. St. Francis Dr., Santa Fe, NM 87505
Phone: (505) 476-3460 Fax: (505) 476-3462

State of New Mexico
Energy, Minerals & Natural Resources Department
OIL CONSERVATION DIVISION
1220 South St. Francis Dr.
Santa Fe, NM 87505

Form C-102
Revised August 1, 2011
Submit one copy to appropriate
District Office
☐ AMENDED REPORT

WELL LOCATION AND ACREAGE DEDICATION PLAT

¹ API Number	² Pool Code 970	³ Pool Name Airstrip; Wolfcamp
⁴ Property Code	⁵ Property Name HONEY BADGER FEE	⁶ Well Number 701H
⁷ OGRID No. 325830	⁸ Operator Name ASCENT ENERGY	⁹ Elevation 3967'

¹⁰ Surface Location

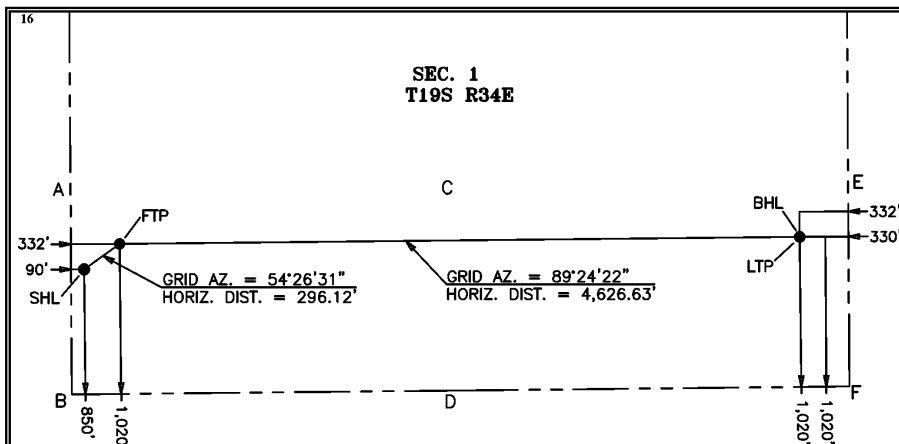
UL or lot no.	Section	Township	Range	Lot Idn	Feet from the	North/South line	Feet from the	East/West line	County
M	1	19 S	34 E		850	SOUTH	90	WEST	LEA

¹¹ Bottom Hole Location If Different From Surface

UL or lot no.	Section	Township	Range	Lot Idn	Feet from the	North/South line	Feet from the	East/West line	County
P	1	19 S	34 E		1,020	SOUTH	330	EAST	LEA

¹² Dedicated Acres	¹³ Joint or Infill	¹⁴ Consolidation Code	¹⁵ Order No.
-------------------------------	-------------------------------	----------------------------------	-------------------------

No allowable will be assigned to this completion until all interests have been consolidated or a non-standard unit has been approved by the division.



SURFACE LOCATION
NAD 27 NME
Y= 613,624.5
X= 749,744.8
LAT.= 32.684327°N
LONG.= 103.521616°W

LAST TAKE POINT
NAD 27 NME
Y= 613,844.5
X= 754,610.0
LAT.= 32.684828°N
LONG.= 103.505799°W

SURFACE LOCATION
NAD 83 NME
Y= 613,687.1
X= 790,924.5
LAT.= 32.684447°N
LONG.= 103.522110°W

LAST TAKE POINT
NAD 83 NME
Y= 613,907.2
X= 795,789.8
LAT.= 32.684949°N
LONG.= 103.506293°W

FIRST TAKE POINT
NAD 27 NME
Y= 613,796.7
X= 749,985.7
LAT.= 32.684795°N
LONG.= 103.520829°W

BOTTOM HOLE LOCATION
NAD 27 NME
Y= 613,844.6
X= 754,612.0
LAT.= 32.684828°N
LONG.= 103.505792°W

FIRST TAKE POINT
NAD 83 NME
Y= 613,859.3
X= 791,165.4
LAT.= 32.684915°N
LONG.= 103.521323°W

BOTTOM HOLE LOCATION
NAD 83 NME
Y= 613,907.3
X= 795,791.8
LAT.= 32.684949°N
LONG.= 103.506286°W

CORNER COORDINATES TABLE
NAD 27 NME
A - Y= 614,094.2 N, X= 749,651.8 E
B - Y= 612,773.3 N, X= 749,660.3 E
C - Y= 614,120.7 N, X= 752,302.9 E
D - Y= 612,800.7 N, X= 752,315.2 E
E - Y= 614,147.2 N, X= 754,940.0 E
F - Y= 612,828.1 N, X= 754,948.9 E

CORNER COORDINATES TABLE
NAD 83 NME
A - Y= 614,156.9 N, X= 790,831.5 E
B - Y= 612,835.9 N, X= 790,840.0 E
C - Y= 614,183.4 N, X= 793,482.6 E
D - Y= 612,863.3 N, X= 793,495.0 E
E - Y= 614,209.9 N, X= 796,119.8 E
F - Y= 612,890.7 N, X= 796,128.7 E

¹⁷ OPERATOR CERTIFICATION

I hereby certify that the information contained herein is true and complete to the best of my knowledge and belief, and that this organization either owns a working interest or unleased mineral interest in the land including the proposed bottom hole location or has a right to drill this well at this location pursuant to a contract with an owner of such a mineral or working interest, or to a voluntary pooling agreement or a compulsory pooling order heretofore entered by the division.

Signature: Dean Gimbel Date: 1-31-2018

Printed Name: Dean Gimbel

E-mail Address: dgimbel@ascentenergy.us

¹⁸ SURVEYOR CERTIFICATION

I hereby certify that the well location shown on this plat was plotted from field notes of actual surveys made by me or under my supervision, and that the same is true and correct to the best of my belief.

Date of Survey: 1-24-2018

Signature and Seal of Professional Surveyor:

Signature: Mark Dillon Harp

Certificate Number: MARK DILLON HARP 23786



AW 2017111866

District I
1625 N. French Dr., Hobbs, NM 88240
Phone:(575) 393-6161 Fax:(575) 393-0720
District II
811 S. First St., Artesia, NM 88210
Phone:(575) 748-1283 Fax:(575) 748-9720
District III
1000 Rio Brazos Rd., Aztec, NM 87410
Phone:(505) 334-6178 Fax:(505) 334-6170
District IV
1220 S. St Francis Dr., Santa Fe, NM 87505
Phone:(505) 476-3470 Fax:(505) 476-3462

State of New Mexico
Energy, Minerals and Natural Resources
Oil Conservation Division
1220 S. St Francis Dr.
Santa Fe, NM 87505

Form APD Comments

Permit 246975

PERMIT COMMENTS

Operator Name and Address: ASCENT ENERGY, LLC. [325830] 1621 18th St Denver, CO 80202		API Number: 30-025-44415
		Well: HONEY BADGER FEE #701H
Created By	Comment	Comment Date
pkautz	GCP received by P Kautz 01/30/2018	2/1/2018

District I
 1625 N. French Dr., Hobbs, NM 88240
 Phone:(575) 393-6161 Fax:(575) 393-0720
District II
 811 S. First St., Artesia, NM 88210
 Phone:(575) 748-1283 Fax:(575) 748-9720
District III
 1000 Rio Brazos Rd., Aztec, NM 87410
 Phone:(505) 334-6178 Fax:(505) 334-6170
District IV
 1220 S. St Francis Dr., Santa Fe, NM 87505
 Phone:(505) 476-3470 Fax:(505) 476-3462

State of New Mexico
Energy, Minerals and Natural Resources
Oil Conservation Division
1220 S. St Francis Dr.
Santa Fe, NM 87505

Form APD Conditions
 Permit 246975

PERMIT CONDITIONS OF APPROVAL

Operator Name and Address: ASCENT ENERGY, LLC. [325830] 1621 18th St Denver, CO 80202	API Number: 30-025-44415
	Well: HONEY BADGER FEE #701H

OCD Reviewer	Condition
pkautz	Will require a directional survey with the C-104
pkautz	Will require a administrative order for non-standard location prior to placing the well on production.
pkautz	1) SURFACE & INTERMEDIATE CASING - Cement must circulate to surface -- 2) PRODUCTION CASING - Cement must tie back into intermediate casing --
pkautz	If cement does not circulate to surface, must run temperature survey or other log to determine top of cement
pkautz	Surface casing must be set 25' below top of Rustler Anhydrite in order to seal off protectable water
pkautz	1)- The Operator is to notify NMOCB by sundry (Form C-103) within ten (10) days of the well being spud 2)- Drilling Sundries Form C-103 (Casing and Cement test are to be submitted within 10 days 3)- Completion Reports & Logs are to be submitted within 45 days 4)- Deviation / Directional Drill Survey are to be filed with or prior to C-104
pkautz	It is the operator's responsibility to monitor cancellation dates of approved APDs. APD's are good for 2 years and may be extended for one year. Only one 1 year extension will be granted if submitted by C-103 before expiration date. After expiration date or after a 1 year extension must submit new APD.
pkautz	Stage Tool - 1) Must notify OCD Hobbs Office prior to running Stage Tool at 575-370-3186 2) If using Stage Tool on Surface casing, Stage Tool must be set greater than 350' from surface and a minimum of 200 feet above surface shoe. 3) When using a Stage Tool on Intermediate or Production Casing Stage must be a minimum of 50 feet below previous casing shoe.