

**District I**  
1625 N. French Dr., Hobbs, NM 88240  
Phone:(575) 393-6161 Fax:(575) 393-0720

**District II**  
811 S. First St., Artesia, NM 88210  
Phone:(575) 748-1283 Fax:(575) 748-9720

**District III**  
1000 Rio Brazos Rd., Aztec, NM 87410  
Phone:(505) 334-6178 Fax:(505) 334-6170

**District IV**  
1220 S. St Francis Dr., Santa Fe, NM 87505  
Phone:(505) 476-3470 Fax:(505) 476-3462

**State of New Mexico**  
**Energy, Minerals and Natural Resources**  
**Oil Conservation Division**  
**1220 S. St Francis Dr.**  
**Santa Fe, NM 87505**

Form C-101  
August 1, 2011  
Permit 248154

**APPLICATION FOR PERMIT TO DRILL, RE-ENTER, DEEPEN, PLUGBACK, OR ADD A ZONE**

1. Operator Name and Address PERCUSSION PETROLEUM OPERATING, LLC 919 Milam Houston , TX 77002		2. OGRID Number 371755
4. Property Code 320702		3. API Number 30-015-44732
5. Property Name MORRIS BOYD STATE COM		6. Well No. 003H

**7. Surface Location**

UL - Lot	M	Section	23	Township	19S	Range	25E	Lot Idn		Feet From	555	N/S Line	S	Feet From	675	E/W Line	W	County	Eddy
----------	---	---------	----	----------	-----	-------	-----	---------	--	-----------	-----	----------	---	-----------	-----	----------	---	--------	------

**8. Proposed Bottom Hole Location**

UL - Lot	M	Section	26	Township	19S	Range	25E	Lot Idn	M	Feet From	20	N/S Line	S	Feet From	960	E/W Line	W	County	Eddy
----------	---	---------	----	----------	-----	-------	-----	---------	---	-----------	----	----------	---	-----------	-----	----------	---	--------	------

**9. Pool Information**

N. SEVEN RIVERS; GLORIETA-YESO	97565
--------------------------------	-------

**Additional Well Information**

11. Work Type New Well	12. Well Type OIL	13. Cable/Rotary	14. Lease Type Private	15. Ground Level Elevation 3439
16. Multiple N	17. Proposed Depth 8309	18. Formation Yeso	19. Contractor	20. Spud Date 3/7/2018
Depth to Ground water		Distance from nearest fresh water well		Distance to nearest surface water

☒ We will be using a closed-loop system in lieu of lined pits

**21. Proposed Casing and Cement Program**

Type	Hole Size	Casing Size	Casing Weight/ft	Setting Depth	Sacks of Cement	Estimated TOC
Surf	12.25	9.625	36	1220	550	0
Prod	8.75	5.5	17	8300	2000	1500

**Casing/Cement Program: Additional Comments**

--

**22. Proposed Blowout Prevention Program**

Type	Working Pressure	Test Pressure	Manufacturer
Annular	3000	2500	Shaffer
Double Ram	5000	3000	Shaffer

23. I hereby certify that the information given above is true and complete to the best of my knowledge and belief. <b>I further certify I have complied with 19.15.14.9 (A) NMAC <input checked="" type="checkbox"/> and/or 19.15.14.9 (B) NMAC <input checked="" type="checkbox"/> if applicable.</b>  Signature:	<b>OIL CONSERVATION DIVISION</b>
Printed Name: Lupe Carrillo	Approved By: Raymond Podany
Title: Chief Operating Officer	Title: Geologist
Email Address: Lupe@percussionpetroleum.com	Approved Date: 2/27/2018      Expiration Date: 2/27/2020
Date: 2/27/2018      Phone: 713-589-9509	Conditions of Approval Attached

DISTRICT I  
1625 N. French Dr., Hobbs, NM 88240  
Phone: (575) 393-6161 Fax: (575) 393-0720

DISTRICT II  
811 S. First St., Artesia, NM 88210  
Phone: (575) 748-1283 Fax: (575) 748-9720

DISTRICT III  
1000 Rio Brazos Road, Aztec, NM 87410  
Phone: (505) 334-6178 Fax: (505) 334-6170

DISTRICT IV  
1220 S. St. Francis Dr., Santa Fe, NM 87505  
Phone: (505) 476-3460 Fax: (505) 476-3462

State of New Mexico  
Energy, Minerals & Natural Resources Department  
OIL CONSERVATION DIVISION  
1220 South St. Francis Dr.  
Santa Fe, New Mexico 87505

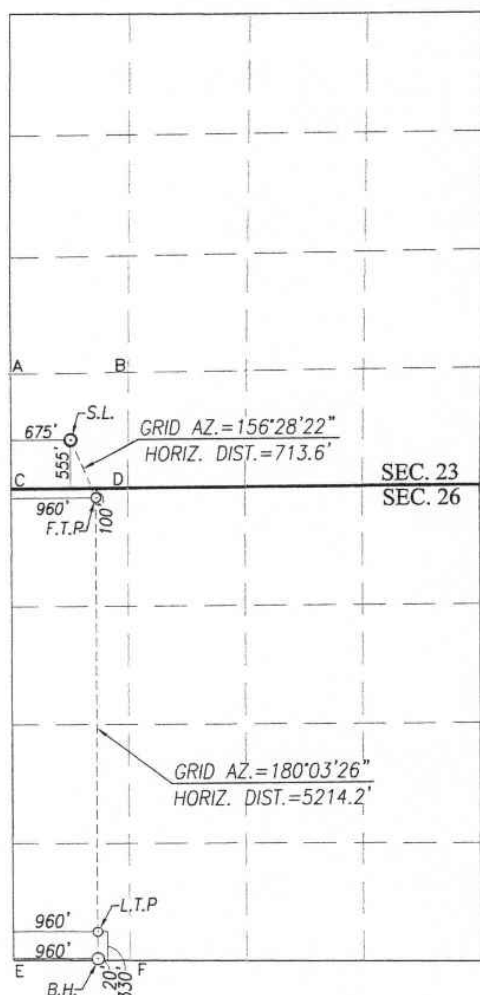
Form C-102  
Revised August 1, 2011  
Submit one copy to appropriate  
District Office

☐ AMENDED REPORT

WELL LOCATION AND ACREAGE DEDICATION PLAT

API Number		Pool Code		Pool Name					
Property Code		Property Name <b>MORRIS BOYD STATE COM</b>						Well Number <b>3H</b>	
OGRID No.		Operator Name <b>PERCUSSION PETROLEUM OPERATING, LLC</b>						Elevation <b>3439'</b>	
Surface Location									
UL or lot No. <b>M</b>	Section <b>23</b>	Township <b>19-S</b>	Range <b>25-E</b>	Lot Idn	Feet from the <b>555</b>	North/South line <b>SOUTH</b>	Feet from the <b>675</b>	East/West line <b>WEST</b>	County <b>EDDY</b>
Bottom Hole Location If Different From Surface									
UL or lot No. <b>M</b>	Section <b>26</b>	Township <b>19-S</b>	Range <b>25-E</b>	Lot Idn	Feet from the <b>20</b>	North/South line <b>SOUTH</b>	Feet from the <b>960</b>	East/West line <b>WEST</b>	County <b>EDDY</b>
Dedicated Acres		Joint or Infill		Consolidation Code		Order No.			

NO ALLOWABLE WILL BE ASSIGNED TO THIS COMPLETION UNTIL ALL INTERESTS HAVE BEEN CONSOLIDATED OR A NON-STANDARD UNIT HAS BEEN APPROVED BY THE DIVISION



SCALE: 1"=2000'

GEODETIC COORDINATES NAD 83 NME SURFACE LOCATION Y= 596791.9 N X= 501764.1 E LAT.=32.640563° N LONG.=104.461896° W FIRST TAKE POINT NAD 83 NME Y= 596137.8 N X= 502048.8 E LAT.=32.638766° N LONG.=104.460968° W	GEODETIC COORDINATES NAD 27 NME SURFACE LOCATION Y= 596730.8 N X= 460585.5 E LAT.=32.640450° N LONG.=104.461377° W FIRST TAKE POINT NAD 27 NME Y= 596076.8 N X= 460870.3 E LAT.=32.638653° N LONG.=104.460449° W
------------------------------------------------------------------------------------------------------------------------------------------------------------------------------------------------------------------------------------------------------	------------------------------------------------------------------------------------------------------------------------------------------------------------------------------------------------------------------------------------------------------

CORNER COORDINATES TABLE  
NAD 27 NME

A - Y= 597482.1 N, X= 459910.8 E	B - Y= 597491.9 N, X= 461249.0 E
C - Y= 596174.3 N, X= 459910.7 E	D - Y= 496177.7 N, X= 461236.7 E
E - Y= 590853.3 N, X= 459905.3 E	F - Y= 590840.5 N, X= 461230.8 E

CORNER COORDINATES TABLE  
NAD 83 NME

A - Y= 597543.2 N, X= 501089.3 E	B - Y= 597553.0 N, X= 502427.5 E
C - Y= 596235.3 N, X= 501089.2 E	D - Y= 596238.7 N, X= 502415.2 E
E - Y= 590914.1 N, X= 501083.9 E	F - Y= 590901.3 N, X= 502409.4 E

LAST TAKE POINT NAD 83 NME Y= 591234.8 N X= 502044.0 E LAT.=32.625290° N LONG.=104.460965° W	LAST TAKE POINT NAD 27 NME Y= 591173.9 N X= 460865.4 E LAT.=32.625176° N LONG.=104.460446° W
BOTTOM HOLE LOCATION NAD 83 NME Y= 590924.8 N X= 502043.6 E LAT.=32.624438° N LONG.=104.460965° W	BOTTOM HOLE LOCATION NAD 27 NME Y= 590864.0 N X= 460865.1 E LAT.=32.624324° N LONG.=104.460446° W

OPERATOR CERTIFICATION

I hereby certify that the information herein is true and complete to the best of my knowledge and belief, and that this organization either owns a working interest or unEDDYsed mineral interest in the land including the proposed bottom hole location or has a right to drill this well at this location pursuant to a contract with an owner of such mineral or working interest, or to a voluntary pooling agreement or a compulsory pooling order heretofore entered by the division.

Signature \_\_\_\_\_ Date \_\_\_\_\_

Printed Name \_\_\_\_\_

E-mail Address \_\_\_\_\_

SURVEYOR CERTIFICATION

I hereby certify that the well location shown on this plat was plotted from field notes of actual surveys made by me or under my supervision, and that the same is true and correct to the best of my belief.

JANUARY 16, 2018

Date of Survey \_\_\_\_\_  
Signature & Seal of Professional Surveyor: \_\_\_\_\_

*Ronald J. Eidson*  
3239  
Certificate Number Gary G. Eidson 12641  
Ronald J. Eidson 3239

ACK REV.:1/26/18 REL. W.O.:17110925 JWSC W.O.: 18.11.0063

**District I**  
 1625 N. French Dr., Hobbs, NM 88240  
 Phone:(575) 393-6161 Fax:(575) 393-0720  
**District II**  
 811 S. First St., Artesia, NM 88210  
 Phone:(575) 748-1283 Fax:(575) 748-9720  
**District III**  
 1000 Rio Brazos Rd., Aztec, NM 87410  
 Phone:(505) 334-6178 Fax:(505) 334-6170  
**District IV**  
 1220 S. St Francis Dr., Santa Fe, NM 87505  
 Phone:(505) 476-3470 Fax:(505) 476-3462

State of New Mexico

Energy, Minerals and Natural Resources

Oil Conservation Division

1220 S. St Francis Dr.

Santa Fe, NM 87505

Form APD Comments

Permit 248154

PERMIT COMMENTS

Operator Name and Address: PERCUSSION PETROLEUM OPERATING, LLC [371755] 919 Milam Houston , TX 77002		API Number: 30-015-44732
		Well: MORRIS BOYD STATE COM #003H

Created By	Comment	Comment Date
RPodany	Incomplete. Location of BHL not entered #11. Pit application if not closed loop indicated. Unorthodox locations. < 330 NSL, NSP.	2/26/2018
LELANANDERS	I do not know how to enter #11 in on the electronic APD - I cannot find a place to enter it. Please reference the attached C-102 it has BHL of well. We will be using a closed loop system on the well, and it is a non-standard location, but not a non-standard project area. The Last Take Point will be more than 330' from the south sec 26 line.	2/26/2018
RPodany	operators request	2/27/2018

**District I**  
1625 N. French Dr., Hobbs, NM 88240  
Phone:(575) 393-6161 Fax:(575) 393-0720  
**District II**  
811 S. First St., Artesia, NM 88210  
Phone:(575) 748-1283 Fax:(575) 748-9720  
**District III**  
1000 Rio Brazos Rd., Aztec, NM 87410  
Phone:(505) 334-6178 Fax:(505) 334-6170  
**District IV**  
1220 S. St Francis Dr., Santa Fe, NM 87505  
Phone:(505) 476-3470 Fax:(505) 476-3462

**State of New Mexico**  
**Energy, Minerals and Natural Resources**  
**Oil Conservation Division**  
**1220 S. St Francis Dr.**  
**Santa Fe, NM 87505**

Form APD Conditions

Permit 248154

**PERMIT CONDITIONS OF APPROVAL**

Operator Name and Address: PERCUSSION PETROLEUM OPERATING, LLC [371755] 919 Milam Houston , TX 77002		API Number: 30-015-44732
		Well: MORRIS BOYD STATE COM #003H

OCD Reviewer	Condition
RPodany	Will require a directional survey with the C-104
RPodany	Cement is required to circulate on both surface and intermediate1 strings of casing