

District I
1625 N. French Dr., Hobbs, NM 88240
Phone:(575) 393-6161 Fax:(575) 393-0720

District II
811 S. First St., Artesia, NM 88210
Phone:(575) 748-1283 Fax:(575) 748-9720

District III
1000 Rio Brazos Rd., Aztec, NM 87410
Phone:(505) 334-6178 Fax:(505) 334-6170

District IV
1220 S. St Francis Dr., Santa Fe, NM 87505
Phone:(505) 476-3470 Fax:(505) 476-3462

State of New Mexico
Energy, Minerals and Natural Resources
Oil Conservation Division
1220 S. St Francis Dr.
Santa Fe, NM 87505

Form C-101
August 1, 2011
Permit 247797

APPLICATION FOR PERMIT TO DRILL, RE-ENTER, DEEPEN, PLUGBACK, OR ADD A ZONE

1. Operator Name and Address MATADOR PRODUCTION COMPANY One Lincoln Centre Dallas, TX 75240		2. OGRID Number 228937
4. Property Code 319473		3. API Number 30-015-44751
5. Property Name GARRETT COM		6. Well No. 121H

7. Surface Location

UL - Lot D	Section 32	Township 24S	Range 29E	Lot Idn D	Feet From 310	N/S Line N	Feet From 570	E/W Line W	County Eddy
---------------	---------------	-----------------	--------------	--------------	------------------	---------------	------------------	---------------	----------------

8. Proposed Bottom Hole Location

UL - Lot A	Section 32	Township 24S	Range 39E	Lot Idn A	Feet From 660	N/S Line N	Feet From 240	E/W Line E	County Eddy
---------------	---------------	-----------------	--------------	--------------	------------------	---------------	------------------	---------------	----------------

9. Pool Information

WILLOW LAKE;BONE SPRING	64450
-------------------------	-------

Additional Well Information

11. Work Type New Well	12. Well Type OIL	13. Cable/Rotary	14. Lease Type Private	15. Ground Level Elevation 2938
16. Multiple N	17. Proposed Depth 14280	18. Formation 2nd Bone Spring Sand	19. Contractor	20. Spud Date 5/25/2018
Depth to Ground water		Distance from nearest fresh water well		Distance to nearest surface water

☒ We will be using a closed-loop system in lieu of lined pits

21. Proposed Casing and Cement Program

Type	Hole Size	Casing Size	Casing Weight/ft	Setting Depth	Sacks of Cement	Estimated TOC
Surf	17.5	13.375	54.5	600	500	0
Int1	12.25	9.625	40	2900	900	0
Prod	8.75	5.5	20	13500	2000	1400

Casing/Cement Program: Additional Comments

--

22. Proposed Blowout Prevention Program

Type	Working Pressure	Test Pressure	Manufacturer
Annular	5000	3000	Cameron
Double Ram	10000	5000	Cameron
Pipe	10000	5000	Cameron

23. I hereby certify that the information given above is true and complete to the best of my knowledge and belief. I further certify I have complied with 19.15.14.9 (A) NMAC <input checked="" type="checkbox"/> and/or 19.15.14.9 (B) NMAC <input checked="" type="checkbox"/> if applicable. Signature:	OIL CONSERVATION DIVISION
Printed Name: Electronically filed by Ava Monroe	Approved By: Raymond Podany
Title: Engineering Tech	Title: Geologist
Email Address: amonroe@matadorresources.com	Approved Date: 2/28/2018 Expiration Date: 2/28/2020
Date: 2/27/2018 Phone: 972-371-5218	Conditions of Approval Attached

District I
1625 N. French Dr., Hobbs, NM 88240
Phone: (575) 393-6161 Fax: (575) 393-0720
District II
811 S. First St., Artesia, NM 88210
Phone: (575) 748-1283 Fax: (575) 748-9720
District III
1000 Rio Brazos Road, Aztec, NM 87410
Phone: (505) 334-6178 Fax: (505) 334-6170
District IV
1220 S. St. Francis Dr., Sante Fe, NM 87505
Phone: (505) 476-3460 Fax: (505) 476-3462

State of New Mexico
Energy, Minerals & Natural Resources
Department
OIL CONSERVATION DIVISION
1220 South St. Francis Dr.
Sante Fe, NM 87505

FORM C-102
Revised August 1, 2011
Submit one copy to appropriate
District Office
☐ AMENDED REPORT

WELL LOCATION AND ACREAGE DEDICATION PLAT

¹ API Number	² Pool Code 96473	³ Pool Name PIERCE CROSSING;BONE SPRING, EAST
⁴ Property Code	⁵ Property Name GARRETT COM	⁶ Well Number #121H
⁷ GRID No. 228937	⁸ Operator Name MATADOR PRODUCTION COMPANY	⁹ Elevation 2938'

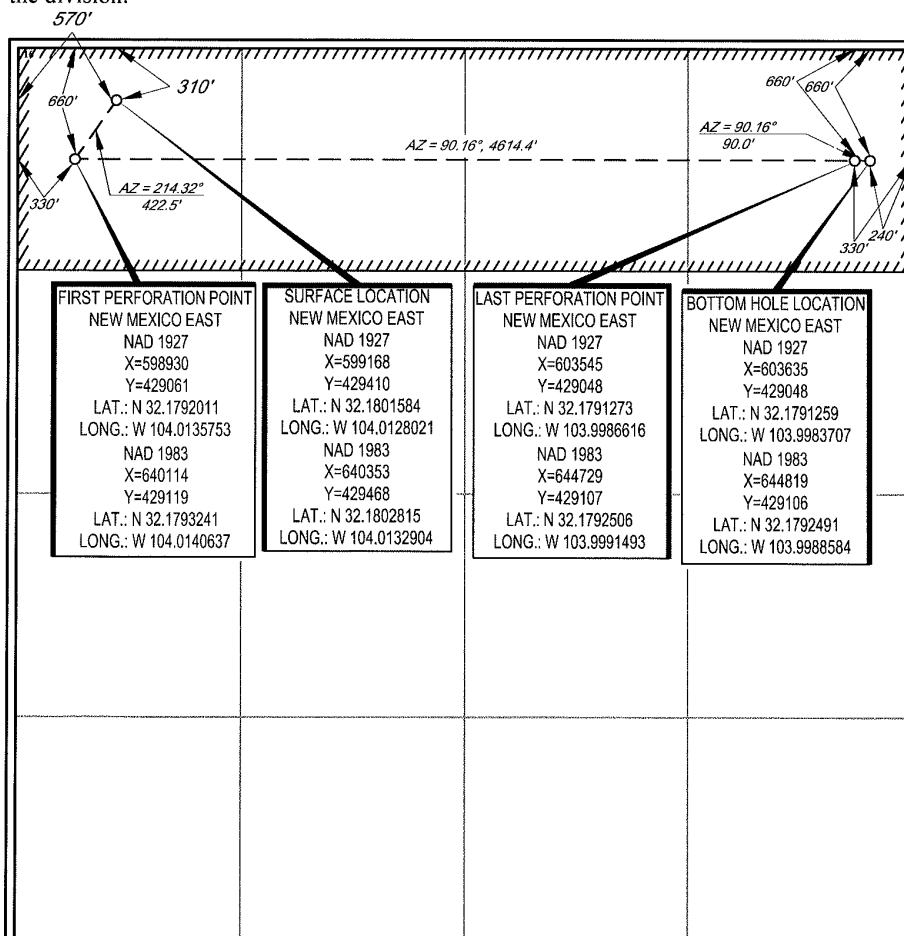
¹⁰Surface Location

UL or lot no.	Section	Township	Range	Lot Idn	Feet from the	North/South line	Feet from the	East/West line	County
D	32	24-S	29-E	-	310'	NORTH	570'	WEST	EDDY

UL or lot no.	Section	Township	Range	Lot Idn	Feet from the	North/South line	Feet from the	East/West line	County
A	32	24-S	29-E	-	660'	NORTH	240'	EAST	EDDY

¹² Dedicated Acres 160.74	¹³ Joint or Infill	¹⁴ Consolidation Code	¹⁵ Order No.
---	-------------------------------	----------------------------------	-------------------------

No allowable will be assigned to this completion until all interests have been consolidated or a non-standard unit has been approved by the division.



¹⁷OPERATOR CERTIFICATION

I hereby certify that the information contained herein is true and complete to the best of my knowledge and belief, and that this organization either owns a working interest or unleased mineral interest in the land including the proposed bottom hole location or has a right to drill this well at this location pursuant to a contract with an owner of such a mineral or working interest, or to a voluntary pooling agreement or a compulsory pooling order heretofore entered by the division.

Signature: *Chris Carleton* Date: 1/29/18

Chris Carleton
Printed Name

ccarleton@matadorresources.com
E-mail Address

¹⁸SURVEYOR CERTIFICATION

I hereby certify that the well location shown on this plat was plotted from field notes of actual surveys made by me or under my supervision, and that the same is true to the best of my belief.

Date of Survey: 01/18/2018
Signature and Seal of Professional Surveyor: *Michael E. Brown*

18329
PROFESSIONAL SURVEYOR

Certificate Number

District I
1625 N. French Dr., Hobbs, NM 88240
District II
811 S. First St., Artesia, NM 88210
District III
1000 Rio Brazos Road, Aztec, NM 87410
District IV
1220 S. St. Francis Dr., Santa Fe, NM 87505

State of New Mexico
Energy, Minerals and Natural Resources Department
Oil Conservation Division
1220 South St. Francis Dr.
Santa Fe, NM 87505

Submit Original
to Appropriate
District Office

GAS CAPTURE PLAN

X Original

Operator & OGRID No.: Matador Production Company (228937)

☐ Amended

Date: 1/2/18

Reason for Amendment: _____

This Gas Capture Plan outlines actions to be taken by the Operator to reduce well/production facility flaring/venting for new completion (new drill, recomple to new zone, re-frac) activity.

Note: A C-129 must be submitted and approved prior to exceeding 60 days allowed by Rule 19.15.18.12.A

Well(s)/Production Facility – Name of facility

The well(s) that will be located at the production facility are shown in the table below.

Well Name	API	Well Location (ULSTR)	Footages	Expected MCF/D	Flared or Vented	Comments
Garrett Com No. 121H	30-015- *****	UL-D Sec 32 T24S R29E	310' North 570' West	+/- 1,500	~21 days	Flare ~21 days on flowback before turn into TB. Time est. depends on sales connect and well cleanup.

Gathering System and Pipeline Notification

The well will be connected to a production facility after flowback operations are complete so long as the gas transporter system is in place. The gas produced from the production facility should be connected to Longwood RB Pipeline, LLC's low/high pressure gathering system located in Eddy County, New Mexico. It will require ~500' of pipeline to connect the facility to a low/high pressure gathering system. Matador Production Company periodically provides a drilling, completion and estimated first production date for wells that are scheduled to be drilled in the foreseeable future to Longwood RB Pipeline, LLC. If changes occur that will affect the drilling and completion schedule, Matador Production Company will notify Longwood RB Pipeline, LLC. Additionally, the gas produced from the well will be processed at a processing plant further downstream and, although unanticipated, any issues with downstream facilities could cause flaring at the wellhead. The actual flow of the gas will be based on compression operating parameters and gathering system pressures measured when the well starts producing.

Flowback Strategy

After the fracture treatment/completion operations (flowback), the well will be produced to temporary production tanks and the gas will be flared or vented. During flowback, the fluids and sand content will be monitored. If the produced fluids contain minimal sand, then the well will be turned to production facilities. The gas sales should start as soon as the well starts flowing through the production facilities, unless there are operational issues on the midstream system at that time. Based on current information, it is Matador's belief the system will be able to take the gas upon completion of the well.

Safety requirements during cleanout operations may necessitate that sand and non-pipeline quality gas be vented and/or flared rather than sold on a temporary basis.

Alternatives to Reduce Flaring

Below are alternatives considered from a conceptual standpoint to reduce the amount of gas flared.

- Power Generation – On lease
 - Operating a generator will only utilize a portion of the produced gas and the remainder of gas would still need to be flared.

- Power Company has to be willing to purchase gas back and if they are willing they require a 5 year commitment to supply the agreed upon amount of power back to them. With gas decline rates and unpredictability of markets it is impossible to agree to such long term demands. If the demands are not met then operator is burdened with penalty for not delivering.
- Compressed Natural Gas – On lease
 - Compressed Natural Gas is likely to be uneconomic to operate when the gas volume declines.
- NGL Removal – On lease
 - NGL Removal requires a plant and is expensive on such a small scale rendering it uneconomic and still requires residue gas to be flared.

District I
1625 N. French Dr., Hobbs, NM 88240
Phone:(575) 393-6161 Fax:(575) 393-0720

District II
811 S. First St., Artesia, NM 88210
Phone:(575) 748-1283 Fax:(575) 748-9720

District III
1000 Rio Brazos Rd., Aztec, NM 87410
Phone:(505) 334-6178 Fax:(505) 334-6170

District IV
1220 S. St Francis Dr., Santa Fe, NM 87505
Phone:(505) 476-3470 Fax:(505) 476-3462

State of New Mexico
Energy, Minerals and Natural Resources
Oil Conservation Division
1220 S. St Francis Dr.
Santa Fe, NM 87505

Form APD Comments

Permit 247797

PERMIT COMMENTS

Operator Name and Address: MATADOR PRODUCTION COMPANY [228937] One Lincoln Centre Dallas, TX 75240		API Number: 30-015-44751
		Well: GARRETT COM #121H

Created By	Comment	Comment Date
------------	---------	--------------

District I
1625 N. French Dr., Hobbs, NM 88240
Phone:(575) 393-6161 Fax:(575) 393-0720
District II
811 S. First St., Artesia, NM 88210
Phone:(575) 748-1283 Fax:(575) 748-9720
District III
1000 Rio Brazos Rd., Aztec, NM 87410
Phone:(505) 334-6178 Fax:(505) 334-6170
District IV
1220 S. St Francis Dr., Santa Fe, NM 87505
Phone:(505) 476-3470 Fax:(505) 476-3462

State of New Mexico
Energy, Minerals and Natural Resources
Oil Conservation Division
1220 S. St Francis Dr.
Santa Fe, NM 87505

Form APD Conditions

Permit 247797

PERMIT CONDITIONS OF APPROVAL

Operator Name and Address: MATADOR PRODUCTION COMPANY [228937] One Lincoln Centre Dallas, TX 75240		API Number: 30-015-44751
		Well: GARRETT COM #121H
OCD Reviewer	Condition	
RPodany	Will require a directional survey with the C-104	
RPodany	Cement is required to circulate on both surface and intermediate1 strings of casing	