

**District I**  
1625 N. French Dr., Hobbs, NM 88240  
Phone:(575) 393-6161 Fax:(575) 393-0720

**District II**  
811 S. First St., Artesia, NM 88210  
Phone:(575) 748-1283 Fax:(575) 748-9720

**District III**  
1000 Rio Brazos Rd., Aztec, NM 87410  
Phone:(505) 334-6178 Fax:(505) 334-6170

**District IV**  
1220 S. St Francis Dr., Santa Fe, NM 87505  
Phone:(505) 476-3470 Fax:(505) 476-3462

**State of New Mexico**  
**Energy, Minerals and Natural Resources**  
**Oil Conservation Division**  
**1220 S. St Francis Dr.**  
**Santa Fe, NM 87505**

Form C-101  
August 1, 2011  
Permit 251395

**APPLICATION FOR PERMIT TO DRILL, RE-ENTER, DEEPEN, PLUGBACK, OR ADD A ZONE**

1. Operator Name and Address CIMAREX ENERGY CO. 15 E 5th Street Tulsa , OK 74103		2. OGRID Number 215099
		3. API Number 30-025-44724
4. Property Code 321280	5. Property Name CANYONLANDS 2 STATE COM	6. Well No. 001H

**7. Surface Location**

UL - Lot	Section	Township	Range	Lot Idn	Feet From	N/S Line	Feet From	E/W Line	County
P	2	24S	34E	P	390	S	1020	E	Lea

**8. Proposed Bottom Hole Location**

UL - Lot	Section	Township	Range	Lot Idn	Feet From	N/S Line	Feet From	E/W Line	County
A	2	24S	34E	1	330	N	1040	E	Lea

**9. Pool Information**

RED HILLS;BONE SPRING, NORTH	96434
------------------------------	-------

**Additional Well Information**

11. Work Type New Well	12. Well Type OIL	13. Cable/Rotary	14. Lease Type State	15. Ground Level Elevation 3426
16. Multiple N	17. Proposed Depth 16067	18. Formation 3rd Bone Spring Sand	19. Contractor	20. Spud Date 7/1/2018
Depth to Ground water		Distance from nearest fresh water well		Distance to nearest surface water

☒ We will be using a closed-loop system in lieu of lined pits

**21. Proposed Casing and Cement Program**

Type	Hole Size	Casing Size	Casing Weight/ft	Setting Depth	Sacks of Cement	Estimated TOC
Surf	12.25	9.625	36	1050	292	0
Prod	8.75	7	29	11155	661	850
Prod	8.75	7	26	11945	0	850
Liner1	6	4.5	11.6	16067	300	11945

**Casing/Cement Program: Additional Comments**

7" is a tapered string.
-------------------------

**22. Proposed Blowout Prevention Program**

Type	Working Pressure	Test Pressure	Manufacturer
Annular	2000	2000	Cameran
Annular	3000	3000	Cameran

23. I hereby certify that the information given above is true and complete to the best of my knowledge and belief. <b>I further certify I have complied with 19.15.14.9 (A) NMAC <input checked="" type="checkbox"/> and/or 19.15.14.9 (B) NMAC <input checked="" type="checkbox"/> if applicable.</b>  Signature:	<b>OIL CONSERVATION DIVISION</b>
Printed Name: Electronically filed by Genea A Holloway	Approved By: Paul F Kautz
Title: Prod Admin Supervisor	Title: Geologist
Email Address: gholloway@cimarex.com	Approved Date: 4/25/2018      Expiration Date: 4/25/2020
Date: 4/25/2018      Phone: 918-295-1658	Conditions of Approval Attached

District I  
1625 N. French Dr., Hobbs, NM 88240  
Phone: (575) 393-6161 Fax: (575) 393-0720  
District II  
811 S. First St., Artesia, NM 88210  
Phone: (575) 748-1283 Fax: (575) 748-9720  
District III  
1000 Rio Brazos Road, Aztec, NM 87410  
Phone: (505) 334-6178 Fax: (505) 334-6170  
District IV  
1220 S. St. Francis Dr., Santa Fe, NM 87505  
Phone: (505) 476-3460 Fax: (505) 476-3462

State of New Mexico  
Energy, Minerals & Natural Resources Department  
OIL CONSERVATION DIVISION  
1220 South St. Francis Dr.  
Santa Fe, NM 87505

Form C-102  
Revised August 1, 2011  
Submit one copy to appropriate  
District Office

☐ AMENDED REPORT

WELL LOCATION AND ACREAGE DEDICATION PLAT

<sup>1</sup> API Number 30-025-	<sup>2</sup> Pool Code 96434	<sup>3</sup> Pool Name Red Hills; Bone Spring, North
<sup>4</sup> Property Code	<sup>5</sup> Property Name CANYONLANDS 2 STATE COM	<sup>6</sup> Well Number 1H
<sup>7</sup> OGRID No. 215099	<sup>8</sup> Operator Name CIMAREX ENERGY CO.	<sup>9</sup> Elevation 3426.3'

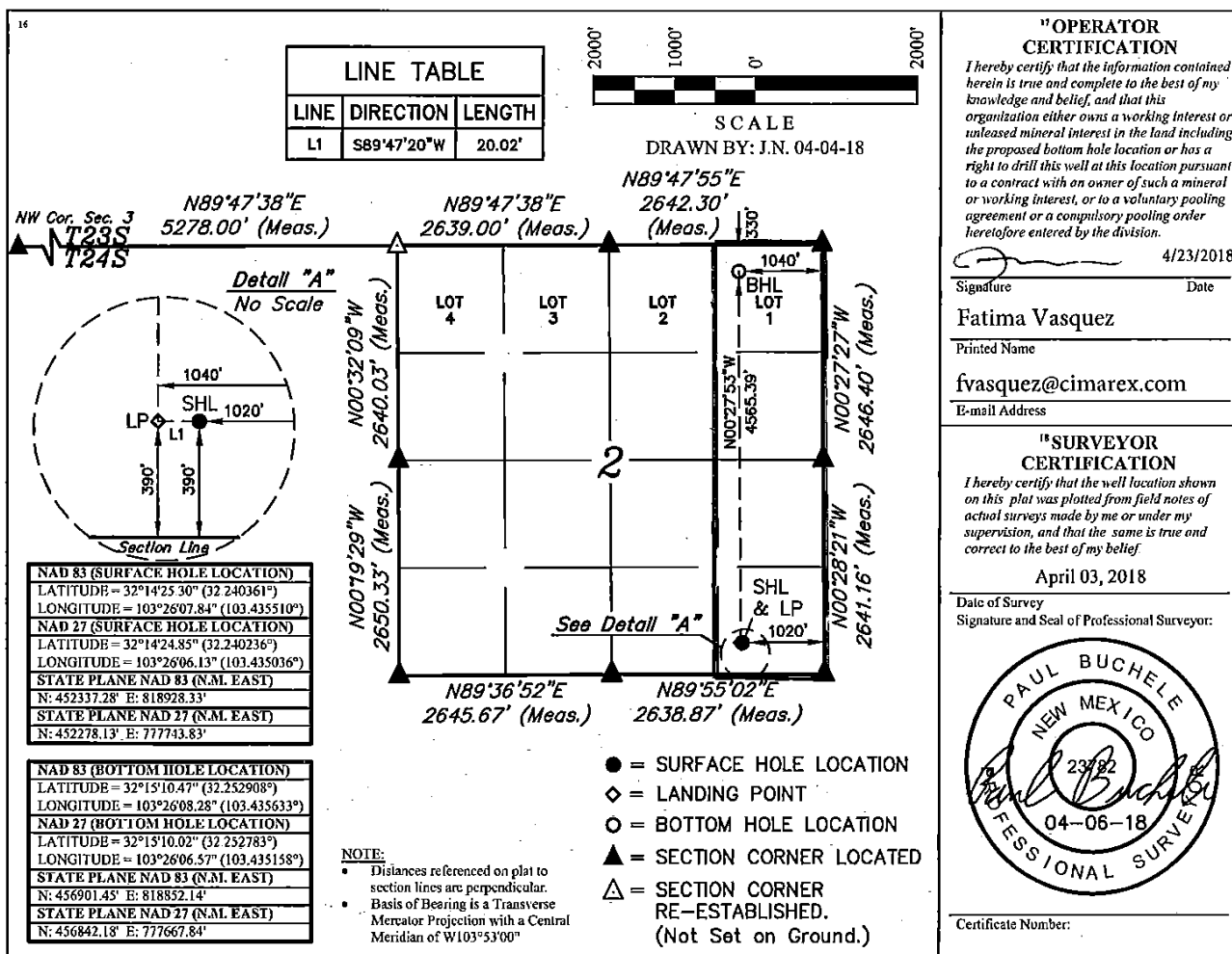
<sup>10</sup> Surface Location

UL or lot no. P	Section 2	Township 24S	Range 34E	Lot Idn	Feet from the 390	North/South line SOUTH	Feet from the 1020	East/West line EAST	County LEA
--------------------	--------------	-----------------	--------------	---------	----------------------	---------------------------	-----------------------	------------------------	---------------

<sup>11</sup> Bottom Hole Location If Different From Surface

UL or lot no. 1	Section 2	Township 24S	Range 34E	Lot Idn	Feet from the 330	North/South line NORTH	Feet from the 1040	East/West line EAST	County LEA
<sup>12</sup> Dedicated Acres 160.02	<sup>13</sup> Joint or Infill	<sup>14</sup> Consolidation Code	<sup>15</sup> Order No.						

No allowable will be assigned to this completion until all interests have been consolidated or a non-standard unit has been approved by the division.



**District I**  
1625 N. French Dr., Hobbs, NM 88240  
Phone:(575) 393-6161 Fax:(575) 393-0720

**District II**  
811 S. First St., Artesia, NM 88210  
Phone:(575) 748-1283 Fax:(575) 748-9720

**District III**  
1000 Rio Brazos Rd., Aztec, NM 87410  
Phone:(505) 334-6178 Fax:(505) 334-6170

**District IV**  
1220 S. St Francis Dr., Santa Fe, NM 87505  
Phone:(505) 476-3470 Fax:(505) 476-3462

**State of New Mexico**  
**Energy, Minerals and Natural Resources**  
**Oil Conservation Division**  
**1220 S. St Francis Dr.**  
**Santa Fe, NM 87505**

Form APD Comments

Permit 251395

PERMIT COMMENTS

Operator Name and Address: CIMAREX ENERGY CO. [215099] 15 E 5th Street Tulsa , OK 74103		API Number: 30-025-44724
		Well: CANYONLANDS 2 STATE COM #001H

Created By	Comment	Comment Date
------------	---------	--------------

**District I**

1625 N. French Dr., Hobbs, NM 88240  
 Phone:(575) 393-6161 Fax:(575) 393-0720

**District II**

811 S. First St., Artesia, NM 88210  
 Phone:(575) 748-1283 Fax:(575) 748-9720

**District III**

1000 Rio Brazos Rd., Aztec, NM 87410  
 Phone:(505) 334-6178 Fax:(505) 334-6170

**District IV**

1220 S. St Francis Dr., Santa Fe, NM 87505  
 Phone:(505) 476-3470 Fax:(505) 476-3462

Form APD Conditions

Permit 251395

**State of New Mexico**  
**Energy, Minerals and Natural Resources**  
**Oil Conservation Division**  
**1220 S. St Francis Dr.**  
**Santa Fe, NM 87505**

**PERMIT CONDITIONS OF APPROVAL**

Operator Name and Address: CIMAREX ENERGY CO. [215099] 15 E 5th Street Tulsa , OK 74103	API Number: 30-025-44724
	Well: CANYONLANDS 2 STATE COM #001H

OCD Reviewer	Condition
pkautz	Will require a directional survey with the C-104
pkautz	Will require a administrative order for non-standard location prior to placing the well on production.
pkautz	1) SURFACE & INTERMEDIATE CASING - Cement must circulate to surface -- 2) PRODUCTION CASING - Cement must tie back into intermediate casing --
pkautz	If cement does not circulate to surface, must run temperature survey or other log to determine top of cement
pkautz	Surface casing must be set 25' below top of Rustler Anhydrite in order to seal off protectable water
pkautz	1)- The Operator is to notify NMOCD by sundry (Form C-103) within ten (10) days of the well being spud 2)- Drilling Sundries Form C-103 (Casing and Cement test are to be submitted within 10 days 3)- Completion Reports & Logs are to be submitted within 45 days 4)- Deviation / Directional Drill Survey are to be filed with or prior to C-104
pkautz	It is the operator's responsibility to monitor cancellation dates of approved APDs. APD's are good for 2 years and may be extended for one year. Only one 1 year extension will be granted if submitted by C-103 before expiration date. After expiration date or after a 1 year extension must submit new APD.
pkautz	Stage Tool - 1) Must notify OCD Hobbs Office prior to running Stage Tool at 575-370-3186 2) If using Stage Tool on Surface casing, Stage Tool must be set greater than 350' from surface and a minimum of 200 feet above surface shoe. 3) When using a Stage Tool on Intermediate or Production Casing Stage must be a minimum of 50 feet below previous casing shoe.