

District I
1625 N. French Dr., Hobbs, NM 88240
Phone:(575) 393-6161 Fax:(575) 393-0720

District II
811 S. First St., Artesia, NM 88210
Phone:(575) 748-1283 Fax:(575) 748-9720

District III
1000 Rio Brazos Rd., Aztec, NM 87410
Phone:(505) 334-6178 Fax:(505) 334-6170

District IV
1220 S. St Francis Dr., Santa Fe, NM 87505
Phone:(505) 476-3470 Fax:(505) 476-3462

State of New Mexico
Energy, Minerals and Natural Resources
Oil Conservation Division
1220 S. St Francis Dr.
Santa Fe, NM 87505

Form C-101
August 1, 2011
Permit 260895

APPLICATION FOR PERMIT TO DRILL, RE-ENTER, DEEPEN, PLUGBACK, OR ADD A ZONE

1. Operator Name and Address CIMAREX ENERGY CO. 600 N. Marienfeld Street Midland, TX 79701		2. OGRID Number 215099
4. Property Code 323006		3. API Number 30-015-45550
5. Property Name PARKWAY 15 14 NORTH STATE COM		6. Well No. 001H

7. Surface Location

UL - Lot	Section	Township	Range	Lot Idn	Feet From	N/S Line	Feet From	E/W Line	County
D	15	19S	29E		1210	N	390	W	Eddy

8. Proposed Bottom Hole Location

UL - Lot	Section	Township	Range	Lot Idn	Feet From	N/S Line	Feet From	E/W Line	County
A	14	19S	29E	A	635	N	100	E	Eddy

9. Pool Information

TURKEY TRACK;BONE SPRING	60660
--------------------------	-------

Additional Well Information

11. Work Type New Well	12. Well Type OIL	13. Cable/Rotary	14. Lease Type State	15. Ground Level Elevation 3345
16. Multiple N	17. Proposed Depth 18729	18. Formation Bone Spring	19. Contractor	20. Spud Date 2/1/2019
Depth to Ground water		Distance from nearest fresh water well		Distance to nearest surface water

☒ We will be using a closed-loop system in lieu of lined pits

21. Proposed Casing and Cement Program

Type	Hole Size	Casing Size	Casing Weight/ft	Setting Depth	Sacks of Cement	Estimated TOC
Surf	17.5	13.378	48	350	226	0
Int1	12.25	9.625	36	3280	831	0
Prod	8.75	5.5	17	18729	2209	3080

Casing/Cement Program: Additional Comments

--

22. Proposed Blowout Prevention Program

Type	Working Pressure	Test Pressure	Manufacturer
Double Ram	2000	1000	Cameron
Double Ram	3000	1500	Cameron

23. I hereby certify that the information given above is true and complete to the best of my knowledge and belief. I further certify I have complied with 19.15.14.9 (A) NMAC <input checked="" type="checkbox"/> and/or 19.15.14.9 (B) NMAC <input checked="" type="checkbox"/> if applicable. Signature:	OIL CONSERVATION DIVISION
Printed Name: Electronically filed by Genea A Holloway	Approved By: Raymond Podany
Title: Prod Admin Supervisor	Title: Geologist
Email Address: gholloway@cimarex.com	Approved Date: 12/14/2018 Expiration Date: 12/14/2020
Date: 12/13/2018 Phone: 918-295-1658	Conditions of Approval Attached

District I
1625 N. French Dr., Hobbs, NM 88240
Phone: (575) 393-6161 Fax: (575) 393-9720
District II
811 S. First St., Artesia, NM 88210
Phone: (575) 748-1283 Fax: (575) 748-9720
District III
1000 Rio Brazos Road, Aztec, NM 87410
Phone: (505) 334-6178 Fax: (505) 334-6170
District IV
1220 S. St. Francis Dr., Santa Fe, NM 87505
Phone: (505) 476-3460 Fax: (505) 476-3462

State of New Mexico
Energy, Minerals & Natural Resources Department
OIL CONSERVATION DIVISION
1220 South St. Francis Dr.
Santa Fe, NM 87505

Form C-102
Revised August 1, 2011
Submit one copy to appropriate
District Office

☐ AMENDED REPORT

WELL LOCATION AND ACREAGE DEDICATION PLAT

¹ API Number 30-015	² Pool Code	³ Pool Name Wildcat Bone Spring
⁴ Property Code	⁵ Property Name PARKWAY 15-14 NORTH STATE COM	⁶ Well Number 1H
⁷ OGRID No. 215099	⁸ Operator Name CIMAREX ENERGY CO.	⁹ Elevation 3345.0'

¹⁰ Surface Location

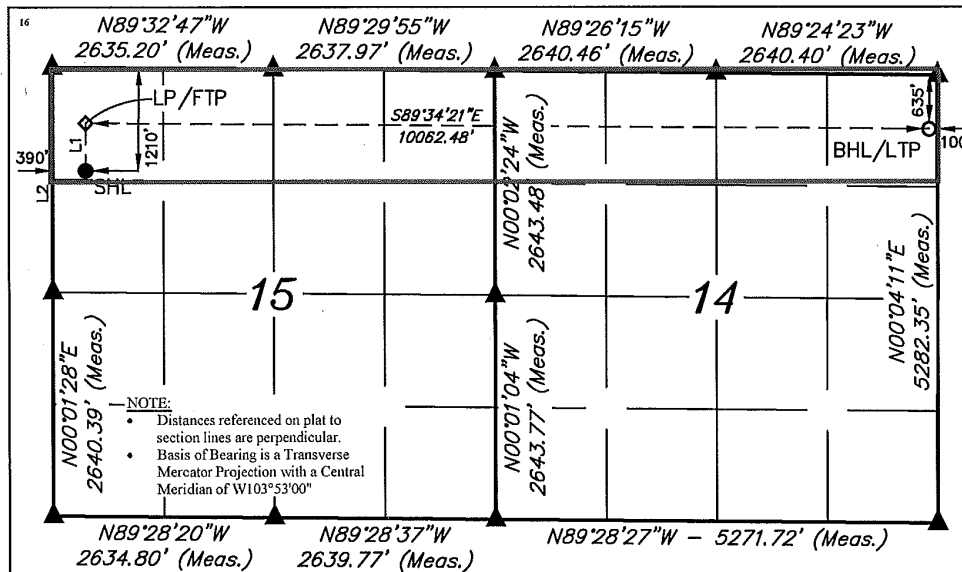
UL or lot no.	Section	Township	Range	Lot Idn	Feet from the	North/South line	Feet from the	East/West line	County
D	15	19S	29E		1210	NORTH	390	WEST	EDDY

¹¹ Bottom Hole Location If Different From Surface

UL or lot no.	Section	Township	Range	Lot Idn	Feet from the	North/South line	Feet from the	East/West line	County
A	14	19S	29E		635	NORTH	100	EAST	EDDY

¹² Dedicated Acres 320	¹³ Joint or Infill	¹⁴ Consolidation Code	¹⁵ Order No.
--------------------------------------	-------------------------------	----------------------------------	-------------------------

No allowable will be assigned to this completion until all interests have been consolidated or a non-standard unit has been approved by the division.

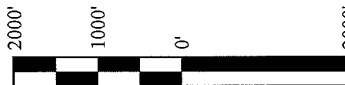


LINE TABLE		
LINE	DIRECTION	LENGTH
L1	N00°02'50"W	557.00'
L2	N00°03'11"W	2842.43'

NAD 83 (SURFACE HOLE LOCATION)	
LATITUDE = 32°39'53.01" (32.664725°)	
LONGITUDE = 104°04'11.80" (104.069943°)	
NAD 27 (SURFACE HOLE LOCATION)	
LATITUDE = 32°39'52.59" (32.664608°)	
LONGITUDE = 104°04'09.97" (104.069436°)	
STATE PLANE NAD 83 (N.M. EAST)	
N: 605658.69' E: 622390.92'	
STATE PLANE NAD 27 (N.M. EAST)	
N: 605596.35' E: 581211.21'	

NAD 83 (BHL/LTP)	
LATITUDE = 32°39'57.94" (32.666094°)	
LONGITUDE = 104°02'14.12" (104.037256°)	
NAD 27 (BHL/LTP)	
LATITUDE = 32°39'57.51" (32.665976°)	
LONGITUDE = 104°02'12.30" (104.036750°)	
STATE PLANE NAD 83 (N.M. EAST)	
N: 606183.15' E: 632448.34'	
STATE PLANE NAD 27 (N.M. EAST)	
N: 606120.72' E: 591268.64'	

- = SURFACE HOLE LOCATION
- ◆ = LANDING POINT/FIRST TAKE POINT
- = BOTTOM HOLE LOCATION/
LAST TAKE POINT
- ▲ = SECTION CORNER LOCATED



SCALE
DRAWN BY: C.M.T. 11-30-18

¹⁷ OPERATOR
CERTIFICATION

I hereby certify that the information contained herein is true and complete to the best of my knowledge and belief, and that this organization either owns a working interest or unleased mineral interest in the land including the proposed bottom hole location or has a right to drill this well at this location pursuant to a contract with an owner of such a mineral or working interest, or to a voluntary pooling agreement or a compulsory pooling order heretofore entered by the division.

Signature: *Aricka Easterling* Date: 12/13/18

Printed Name: Aricka Easterling

E-mail Address: aeasterling@cimarex.com

¹⁸ SURVEYOR
CERTIFICATION

I hereby certify that the well location shown on this plat was plotted from field notes of actual surveys made by me or under my supervision, and that the same is true and correct to the best of my belief.

November 21, 2018

Date of Survey
Signature and Seal of Professional Surveyor:



Certificate Number:

District I
1625 N. French Dr., Hobbs, NM 88240
Phone:(575) 393-6161 Fax:(575) 393-0720
District II
811 S. First St., Artesia, NM 88210
Phone:(575) 748-1283 Fax:(575) 748-9720
District III
1000 Rio Brazos Rd., Aztec, NM 87410
Phone:(505) 334-6178 Fax:(505) 334-6170
District IV
1220 S. St Francis Dr., Santa Fe, NM 87505
Phone:(505) 476-3470 Fax:(505) 476-3462

State of New Mexico
Energy, Minerals and Natural Resources
Oil Conservation Division
1220 S. St Francis Dr.
Santa Fe, NM 87505

Form APD Comments

Permit 260895

PERMIT COMMENTS

Operator Name and Address: CIMAREX ENERGY CO. [215099] 600 N. Marienfeld Street Midland, TX 79701		API Number: 30-015-45550
		Well: PARKWAY 15 14 NORTH STATE COM #001H

Created By	Comment	Comment Date
------------	---------	--------------

District I
1625 N. French Dr., Hobbs, NM 88240
Phone:(575) 393-6161 Fax:(575) 393-0720
District II
811 S. First St., Artesia, NM 88210
Phone:(575) 748-1283 Fax:(575) 748-9720
District III
1000 Rio Brazos Rd., Aztec, NM 87410
Phone:(505) 334-6178 Fax:(505) 334-6170
District IV
1220 S. St Francis Dr., Santa Fe, NM 87505
Phone:(505) 476-3470 Fax:(505) 476-3462

State of New Mexico
Energy, Minerals and Natural Resources
Oil Conservation Division
1220 S. St Francis Dr.
Santa Fe, NM 87505

Form APD Conditions

Permit 260895

PERMIT CONDITIONS OF APPROVAL

Operator Name and Address: CIMAREX ENERGY CO. [215099] 600 N. Marienfeld Street Midland, TX 79701		API Number: 30-015-45550
		Well: PARKWAY 15 14 NORTH STATE COM #001H
OCD Reviewer	Condition	
rpodany	Will require a directional survey with the C-104	
rpodany	Cement is required to circulate on both surface and intermediate1 strings of casing	