

Form 3160-3
(June 2015)UNITED STATES
DEPARTMENT OF THE INTERIOR
BUREAU OF LAND MANAGEMENT

APPLICATION FOR PERMIT TO DRILL OR REENTER

FORM APPROVED
OMB No. 1004-0137
Expires: January 31, 2018

1a. Type of work: <input checked="" type="checkbox"/> DRILL <input type="checkbox"/> REENTER		5. Lease Serial No. NMNM038636
1b. Type of Well: <input type="checkbox"/> Oil Well <input checked="" type="checkbox"/> Gas Well <input type="checkbox"/> Other		6. If Indian, Allottee or Tribe Name
1c. Type of Completion: <input type="checkbox"/> Hydraulic Fracturing <input checked="" type="checkbox"/> Single Zone <input type="checkbox"/> Multiple Zone		7. If Unit or CA Agreement, Name and No.
2. Name of Operator TAP ROCK OPERATING LLC		8. Lease Name and Well No. WTG FED COM 233H
3a. Address 602 Park Point Drive Suite 200, Golden, CO 80401	3b. Phone No. (include area code) (720) 460-3316	9. API Well No.
4. Location of Well (Report location clearly and in accordance with any State requirements. *) At surface NWNE / 376 FNL / 1984 FEL / LAT 32.01926 / LONG -103.9695477 At proposed prod. zone LOT 11 / 30 FSL / 2010 FEL / LAT 32.0001814 / LONG -103.9704375		10. Field and Pool, or Exploratory PURPLE SAGE WOLFCAMP
11. Sec., T. R. M. or Blk. and Survey or Area SEC 27/T26S/R29E/NMP		
14. Distance in miles and direction from nearest town or post office* 15 miles		12. County or Parish EDDY
13. State NM		
15. Distance from proposed* location to nearest property or lease line, ft. (Also to nearest drig. unit line, if any)	376 feet	16. No of acres in lease 441.5
17. Spacing Unit dedicated to this well	441.71	
18. Distance from proposed location* to nearest well, drilling, completed, applied for, on this lease, ft.	25 feet	19. Proposed Depth 10879 feet / 18006 feet
20. BLM/BIA Bond No. in file	FED: NMB001443	
21. Elevations (Show whether DF, KDB, RT, GL, etc.) 2885 feet	22. Approximate date work will start* 12/01/2020	23. Estimated duration 90 days
24. Attachments		

The following, completed in accordance with the requirements of Onshore Oil and Gas Order No. 1, and the Hydraulic Fracturing rule per 43 CFR 3162.3-3 (as applicable)

- | | |
|--|---|
| 1. Well plat certified by a registered surveyor. | 4. Bond to cover the operations unless covered by an existing bond on file (see Item 20 above). |
| 2. A Drilling Plan. | 5. Operator certification. |
| 3. A Surface Use Plan (if the location is on National Forest System Lands, the SUPO must be filed with the appropriate Forest Service Office). | 6. Such other site specific information and/or plans as may be requested by the BLM. |

25. Signature (Electronic Submission)	Name (Printed/Typed) BRIAN WOOD / Ph: (720) 460-3316	Date 05/12/2020
Title President		
Approved by (Signature) (Electronic Submission)	Name (Printed/Typed) Cody Layton / Ph: (575) 234-5959	Date 09/15/2020
Title Assistant Field Manager Lands & Minerals		
Office Carlsbad Field Office		

Application approval does not warrant or certify that the applicant holds legal or equitable title to those rights in the subject lease which would entitle the applicant to conduct operations thereon.
Conditions of approval, if any, are attached.

Title 18 U.S.C. Section 1001 and Title 43 U.S.C. Section 1212, make it a crime for any person knowingly and willfully to make to any department or agency of the United States any false, fictitious or fraudulent statements or representations as to any matter within its jurisdiction.



(Continued on page 2)

*(Instructions on page 2)

District I
1625 N. French Dr., Hobbs, NM 88240
Phone: (575) 393-6161 Fax: (575) 393-0720
District II
811 S. First St., Artesia, NM 88210
Phone: (575) 748-1283 Fax: (575) 748-9720
District III
1000 Rio Brazos Road, Aztec, NM 87410
Phone: (505) 334-6178 Fax: (505) 334-6170
District IV
1220 S. St. Francis Dr., Santa Fe, NM 87505
Phone: (505) 476-3460 Fax: (505) 476-3462

State of New Mexico
Energy, Minerals & Natural Resources
Department
OIL CONSERVATION DIVISION
1220 South St. Francis Dr.
Santa Fe, NM 87505

FORM C-102

Revised August 1, 2011

Submit one copy to appropriate

District Office

☐ AMENDED REPORT

WELL LOCATION AND ACREAGE DEDICATION PLAT

¹ API Number 30-015	² Pool Code 98220	³ Pool Name PURPLE SAGE; WOLFCAMP
⁴ Property Code	⁵ Property Name WTG FED COM	⁶ Well Number 233H
⁷ OGRID No. #372043	⁸ Operator Name TAP ROCK OPERATING, LLC.	⁹ Elevation 2885'

¹⁰Surface Location

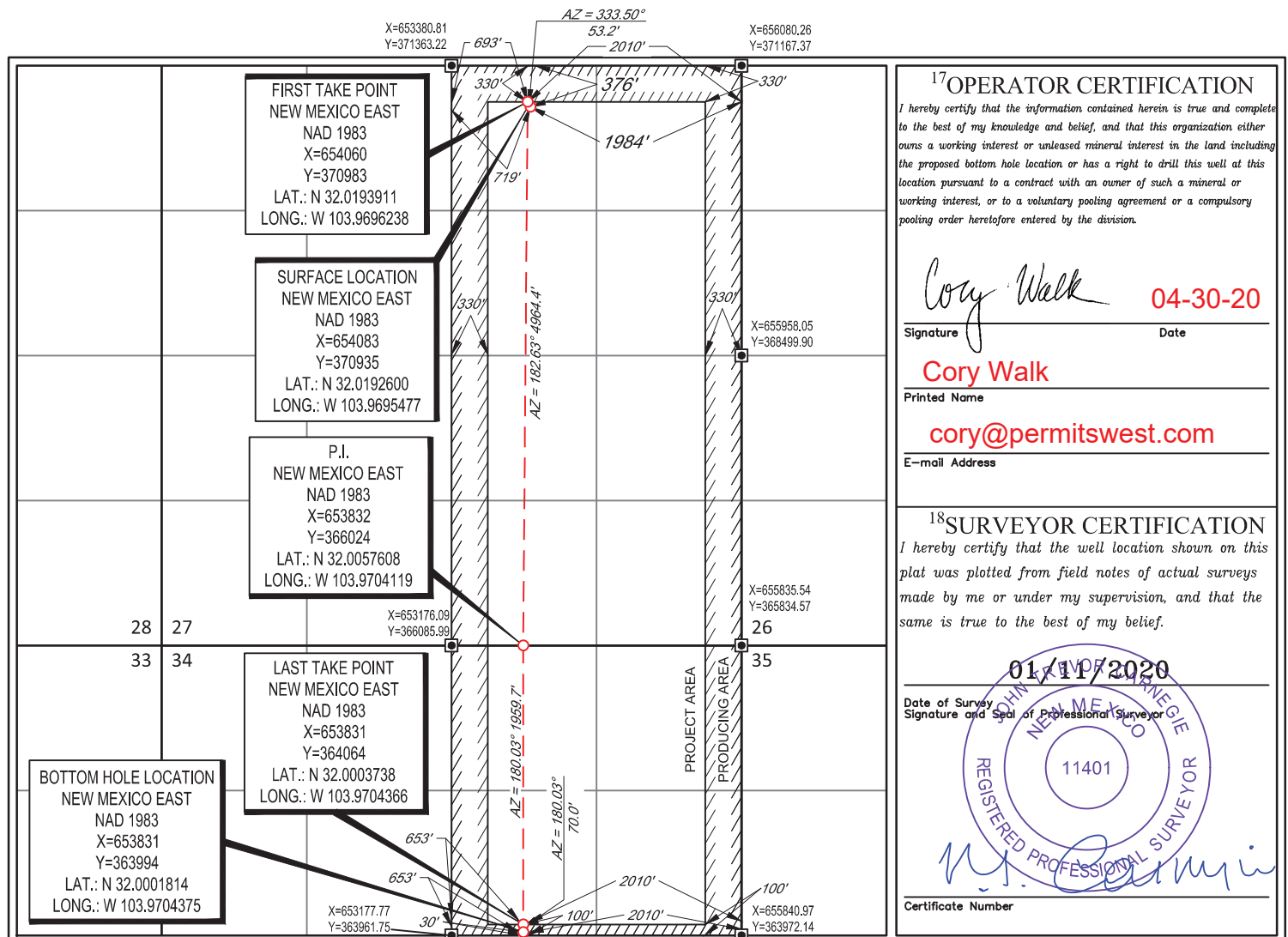
UL or lot no.	Section	Township	Range	Lot Idn	Feet from the	North/South line	Feet from the	East/West line	County
B	27	26-S	29-E	-	376'	NORTH	1984'	EAST	EDDY

¹¹Bottom Hole Location If Different From Surface

UL or lot no.	Section	Township	Range	Lot Idn	Feet from the	North/South line	Feet from the	East/West line	County
11	34	26-S	29-E	-	30'	SOUTH	2010'	EAST	EDDY

¹² Dedicated Acres 441.71	¹³ Joint or Infill	¹⁴ Consolidation Code	¹⁵ Order No.
--	-------------------------------	----------------------------------	-------------------------

No allowable will be assigned to this completion until all interests have been consolidated or a non-standard unit has been approved by the division.

¹⁷OPERATOR CERTIFICATION

I hereby certify that the information contained herein is true and complete to the best of my knowledge and belief, and that this organization either owns a working interest or unleased mineral interest in the land including the proposed bottom hole location or has a right to drill this well at this location pursuant to a contract with an owner of such a mineral or working interest, or to a voluntary pooling agreement or a compulsory pooling order heretofore entered by the division.

Cory Walk **04-30-20**
Signature Date

Cory Walk
Printed Name

cory@permitswest.com
E-mail Address

¹⁸SURVEYOR CERTIFICATION

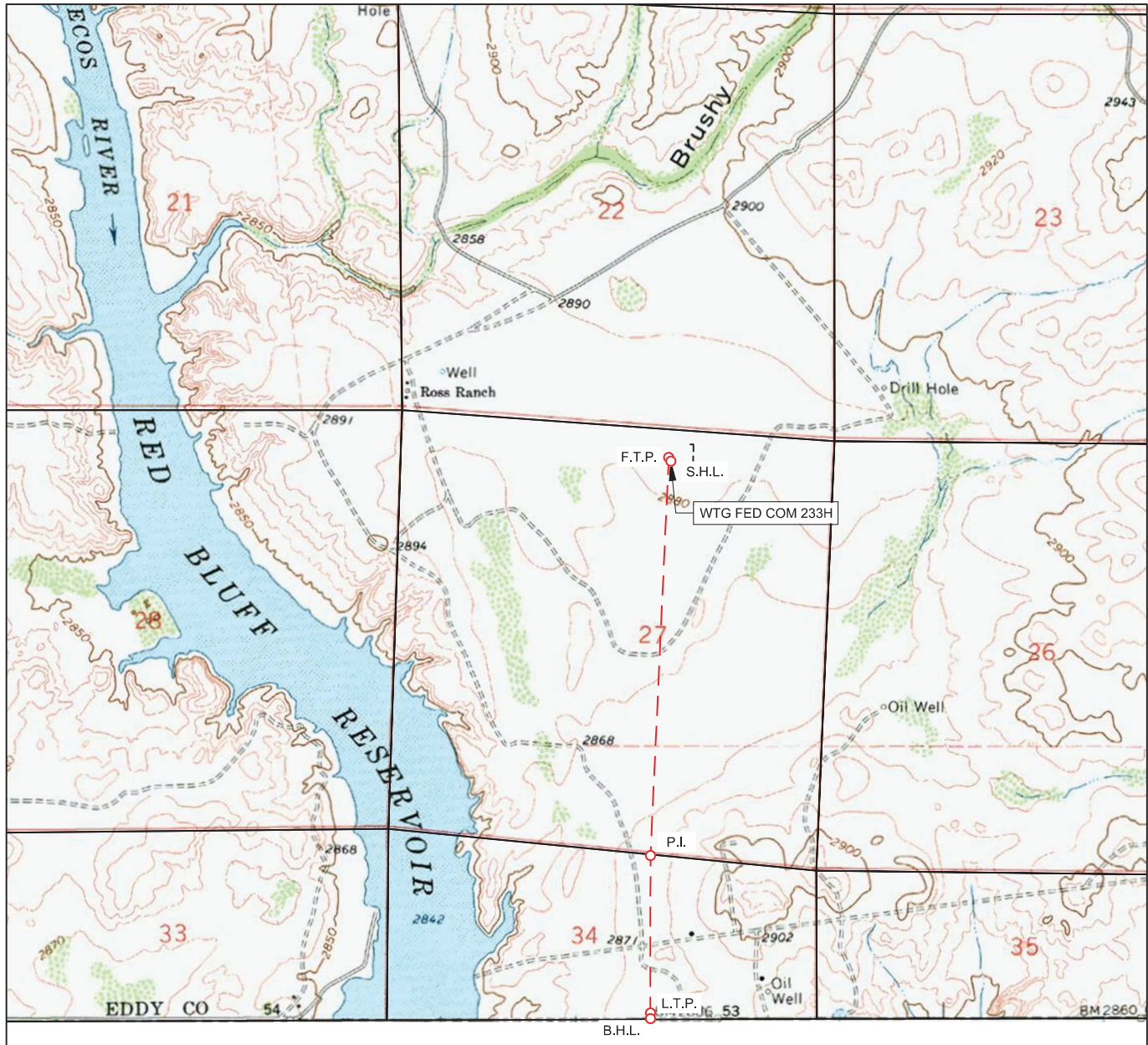
I hereby certify that the well location shown on this plat was plotted from field notes of actual surveys made by me or under my supervision, and that the same is true to the best of my belief.

01/11/2020
Date of Survey

Signature and Seal of Professional Surveyor

11401
REGISTERED PROFESSIONAL SURVEYOR
M. J. [Signature]
Certificate Number

LOCATION & ELEVATION VERIFICATION MAP



LEASE NAME & WELL NO.: WTG FED COM 233H

SECTION 27 TWP 26-S RGE 29-E SURVEY N.M.P.M.
 COUNTY EDDY STATE NM ELEVATION 2885'
 DESCRIPTION 376' FNL & 1984' FEL

LATITUDE N 32.0192600 LONGITUDE W 103.9695477

SCALE: 1" = 2000'
 0' 1000' 2000'

THIS EASEMENT/SERVITUDE LOCATION SHOWN HEREON HAS BEEN SURVEYED ON THE GROUND UNDER MY SUPERVISION AND PREPARED ACCORDING TO THE EVIDENCE FOUND AT THE TIME OF SURVEY, AND DATA PROVIDED BY TAP ROCK OPERATING, LLC. THIS CERTIFICATION IS MADE AND LIMITED TO THOSE PERSONS OR ENTITIES SHOWN ON THE FACE OF THIS PLAT AND IS NON-TRANSFERABLE. THIS SURVEY IS CERTIFIED FOR THIS TRANSACTION ONLY.

ALL BEARINGS, DISTANCES, AND COORDINATE VALUES CONTAINED HEREON ARE GRID BASED UPON THE NEW MEXICO COORDINATE SYSTEM, EAST ZONE OF THE NORTH AMERICAN DATUM 1983, U.S. SURVEY FEET.

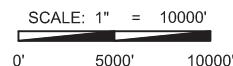


TOPOGRAPHIC
 LOYALTY INNOVATION LEGACY

1400 EVERMAN PARKWAY, Ste. 146 • FT. WORTH, TEXAS 76140
 TELEPHONE: (817) 744-7512 • FAX (817) 744-7554
 2903 NORTH BIG SPRING • MIDLAND, TEXAS 79705
 TELEPHONE: (432) 682-1653 OR (800) 767-1653 • FAX (432) 682-1743
 WWW.TOPOGRAPHIC.COM



ALL BEARINGS, DISTANCES, AND COORDINATE VALUES CONTAINED HEREON ARE GRID BASED UPON THE NEW MEXICO COORDINATE SYSTEM, EAST ZONE OF THE NORTH AMERICAN DATUM 1983, U.S. SURVEY FEET.



1400 EVERMAN PARKWAY, Ste. 146 • FT. WORTH, TEXAS 76140
TELEPHONE: (817) 744-7512 • FAX (817) 744-7554
2903 NORTH BIG SPRING • MIDLAND, TEXAS 79705
TELEPHONE: (432) 682-1653 OR (800) 767-1653 • FAX (432) 682-1743
WWW.TOPOGRAPHIC.COM

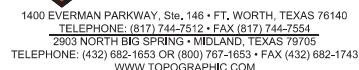
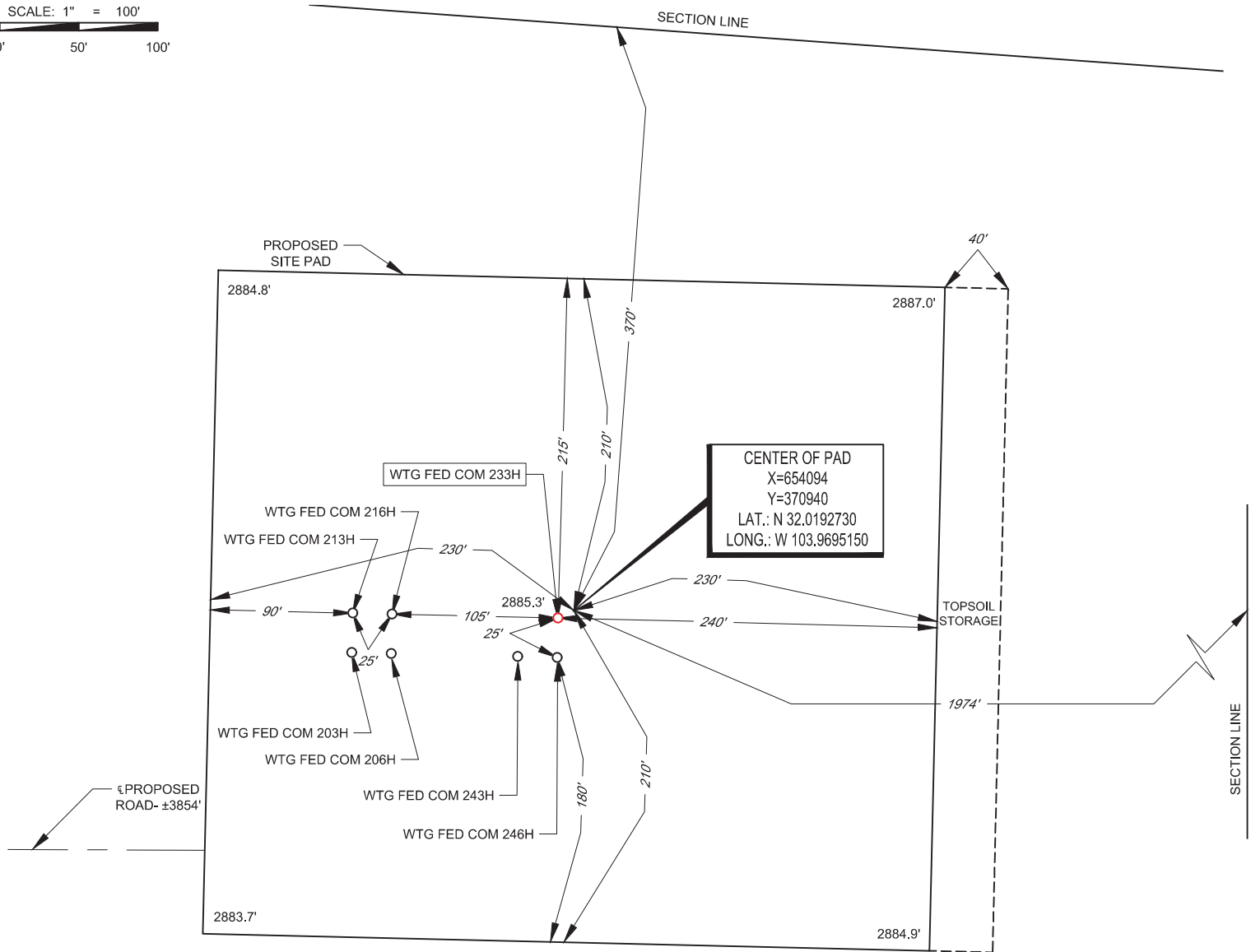


EXHIBIT 2B



SECTION 27, TOWNSHIP 26-S, RANGE 29-E, N.M.P.M.
EDDY COUNTY, NEW MEXICO

SCALE: 1" = 100'
0' 50' 100'



LEASE NAME & WELL NO.: WTG FED COM 233H
233H LATITUDE N 32.0192600 233H LONGITUDE W 103.9695477
CENTER OF PAD IS 370' FNL & 1974' FEL



John Trevor Carnegie, P.S. No. 11401

ALL BEARINGS, DISTANCES, AND COORDINATE VALUES CONTAINED HEREON ARE GRID BASED UPON THE NEW MEXICO COORDINATE SYSTEM OF 1983, EAST ZONE, U.S. SURVEY FEET. ELEVATIONS USED ARE NAVD88, OBTAINED THROUGH AN OPUS SOLUTION.

THIS PROPOSED PAD SITE LOCATION SHOWN HEREON HAS BEEN SURVEYED ON THE GROUND UNDER MY SUPERVISION AND PREPARED ACCORDING TO THE EVIDENCE FOUND AT THE TIME OF SURVEY, AND DATA PROVIDED BY TAP ROCK OPERATING, LLC. THIS CERTIFICATION IS MADE AND LIMITED TO THOSE PERSONS OR ENTITIES SHOWN ON THE FACE OF THIS PLAT AND IS NON-TRANSFERABLE. THIS SURVEY IS CERTIFIED FOR THIS TRANSACTION ONLY.

ORIGINAL DOCUMENT SIZE: 8.5" X 11"



1400 EVERMAN PARKWAY, Ste. 146 • FT. WORTH, TEXAS 76140
TELEPHONE: (817) 744-7512 • FAX (817) 744-7554
2903 NORTH BIG SPRING • MIDLAND, TEXAS 79705
TELEPHONE: (432) 682-1653 OR (800) 767-1653 • FAX (432) 682-1743
WWW.TOPOGRAPHIC.COM

District I
1625 N. French Dr., Hobbs, NM 88240
District II
811 S. First St., Artesia, NM 88210
District III
1000 Rio Brazos Road, Aztec, NM 87410
District IV
1220 S. St. Francis Dr., Santa Fe, NM 87505

State of New Mexico
Energy, Minerals and Natural Resources Department
Oil Conservation Division
1220 South St. Francis Dr.
Santa Fe, NM 87505

Submit Original
to Appropriate
District Office

GAS CAPTURE PLAN

Date: 4/1/20

☒ Original Operator & OGRID No.: 372043
☐ Amended - Reason for Amendment: _____

This Gas Capture Plan outlines actions to be taken by the Operator to reduce well/production facility flaring/venting for new completion (new drill, recomple to new zone, re-frac) activity.

Note: Form C-129 must be submitted and approved prior to exceeding 60 days allowed by Rule (Subsection A of 19.15.18.12 NMAC).

Well(s)/Production Facility – Name of facility

The well(s) that will be located at the production facility are shown in the table below.

Well Name	API	Well Location (ULSTR)	Footages	Expected MCF/D	Flared or Vented	Comments
WTG Fed Com 233H		UL B Sec 27 T26S R29E	376' FNL 1984' FEL	+/- 3,750	21 days	Gas will be flared for ~21 days on flowback before turning into TB. Time est depends on sales connect and well cleanup.

Gathering System and Pipeline Notification

Well(s) will be connected to a production facility after flowback operations are complete, if gas transporter system is in place. The gas produced from production facility is dedicated to Salt Creek Midstream and will be connected to Salt Creek Midstream low/high pressure gathering system located in Eddy County, New Mexico. It will require ~5000' of pipeline to connect the facility to low/high pressure gathering system. Tap Rock Operating, LLC provides (periodically) to Gas Transporter a drilling, completion and estimated first production date for wells that are scheduled to be drilled in the foreseeable future. In addition, Tap Rock Operating, LLC and Salt Creek Midstream have periodic conference calls to discuss changes to drilling and completion schedules. Gas from these wells will be processed at Salt Creek Midstream Processing Plant located in Pecos, Texas. The actual flow of the gas will be based on compression operating parameters and gathering system pressures.

Flowback Strategy

After the fracture treatment/completion operations, well(s) will be produced to temporary production tanks and gas will be flared or vented. During flowback, the fluids and sand content will be monitored. When the produced fluids contain minimal sand, the wells will be turned to production facilities. Gas sales should start as soon as the wells start flowing through the production facilities, unless there are operational issues on the midstream side at that time. Based on current information, it is Tap Rock's belief the system can take this gas upon completion of the well(s).

Safety requirements during cleanout operations from the use of underbalanced air cleanout systems may necessitate that sand and non-pipeline quality gas be vented and/or flared rather than sold on a temporary basis.

Alternatives to Reduce Flaring

Below are alternatives considered from a conceptual standpoint to reduce the amount of gas flared.

- Power Generation – On lease
 - Only a portion of gas is consumed operating the generator, remainder of gas will be flared
- Compressed Natural Gas – On lease
 - Gas flared would be minimal, but might be uneconomical to operate when gas volume declines

- NGL Removal – On lease
 - Plants are expensive, residue gas is still flared, and uneconomical to operate when gas volume declines



Drilling Operations Plan
 WTG Fed Com 233H
 Tap Rock Operating, LLC
 SHL 376' FNL & 1984' FEL, Sec. 27
 BHL 30' FSL & 2010' FEL, Sec. 34
 T. 26S., R. 29E, Eddy County, NM

Elevation above Sea Level: 2885'

DRILLING PROGRAM

1. Estimated Tops

Formation	TVD	MD	Lithologies	Bearing
Quaternary Deposits	0	0	Surface	None
Rustler Anhydrite	705	705		Salt
Salado	1205	1205	Salt	Salt
Base Salt	2750	2755		Salt
Lamar	2930	2936	Limestone	None
Bell Canyon	2995	3001	Sandstone	Hydrocarbons
Cherry Canyon	3895	3905	Sandstone	Hydrocarbons
Brushy Canyon	5105	5119	Sandstone	Hydrocarbons
Bone Spring	6715	6730	Limestone	Hydrocarbons
1st Bone Spring	7625	7640	Sandstone	Hydrocarbons
2nd Bone Spring	7895	7910	Sandstone	Hydrocarbons
3rd Bone Spring	8875	8890	Sandstone	Hydrocarbons
KOP	10357	10372	Shale	Hydrocarbons
Wolfcamp	9825	9840	Shale	Hydrocarbons
TD	10879	18006	Shale	Hydrocarbons

2. Notable Zones

Wolfcamp is the target formation.

3. Pressure Control

Pressure Control Equipment (See Schematics):

A 15,000', 5,000 psi BOP stack consisting of 3 rams with 2 pipe rams, 1 blind ram, and 1 annular preventer will be used below surface casing to TD. See attachments for BOP and choke manifold diagrams. Also present will be an accumulator that meets the requirements of Onshore Order #2 for the pressure rating of the BOP stack. A rotating head will also be installed as needed. BOP will be inspected and operated as recommended in Onshore Order #2. A top drive check valve and sub equipped with a full opening valve sized to fit the drill pipe and collars will be available on the rig floor in the open position. The wellhead will be a multi-bowl speed head.



Drilling Operations Plan
WTG Fed Com 233H
Tap Rock Operating, LLC
SHL 376' FNL & 1984' FEL, Sec. 27
BHL 30' FSL & 2010' FEL, Sec. 34
T. 26S., R. 29E, Eddy County, NM

BOP Test procedure will be as follows:

After surface casing is set and the BOP is nipped up, the BOP pressure tests will be made with a third party tester to 250 psi low, 5000 psi high, and the annular preventer will be tested to 2,500 psi. The BOP will be tested in this manner after nipple-up if any break of the stack occurs.

Variance Requests:

Tap Rock requests a variance to run a multi-bowl speed head for setting the Intermediate 1, Intermediate 2, and Production Strings. Tap Rock requests a variance to drill this well using a co-flex line between the BOP and choke manifold. Certification for proposed co-flex hose is attached. The hose is not required by the manufacturer to be anchored. In the event the specific hose is not available, one of equal or higher rating will be used. Tap Rock requests a variance to have the option of batch drilling this well with other wells on the same pad. In the event that this well is batch drilled, after drilling surface, 1st intermediate, and 2nd intermediate hole sections and cementing 2nd intermediate casing, a 10M dry hole cap with bleed off valve will be installed. The rig will then walk to another well on the pad. When the rig returns to this well and BOPs are installed, the operator will perform a full BOP test.

Tap Rock requests approval to possibly utilize a spudder rig to drill and set casing for the surface interval on this well. The spudder rig will be possibly utilized in order to reduce cost and save time. The wellhead will be installed and tested as soon as the surface casing is cut off per the existing COAs. A blind flange with the same pressure rating as the wellhead will be installed on the well. Once the spudder rig is removed, Tap Rock will secure the wellhead area by placing a guard rail around the cellar. Pressure will be monitored and a means for intervention will be maintained while the drilling rig is not over the well. Spudder rig operations are expected to take 2-3 days per well. Three wells on the pad will have surface casing set by the spudder rig as a part of this operation. The BLM will be notified 24 hours prior to commencing spudder rig operations. Within 90 days of the departure of the spudder rig, drilling operations will recommence on these wells. This rig will have a BOP stack equal or greater to the pressure rating required in the COAs. The BLM will be notified 24 hours before the larger rig moves on the pre-set wells. Tap Rock will have supervision on the spudder rig to ensure compliance with all BLM and NMOCD regulations.



Drilling Operations Plan
WTG Fed Com 233H
Tap Rock Operating, LLC
SHL 376' FNL & 1984' FEL, Sec. 27
BHL 30' FSL & 2010' FEL, Sec. 34
T. 26S., R. 29E, Eddy County, NM

4. Casing & Cement

All Casing will be new.

Name	Hole Size	Casing Size	Standard	Tapered	Top MD	Bottom MD	Top TVD	Btm TVD	Grade	Weight	Thread	Collapse	Burst	Tension
Surface	17 1/2	13 3/8	API	No	0	775	0	775	J-55	54.5	BUTT	1.13	1.15	1.6
1st Intermediate	12 1/4	9 5/8	API	No	0	2986	0	2980	J-55	40	BUTT	1.13	1.15	1.6
2nd Intermediate	8 3/4	7 5/8	API	No	0	2686	0	2680	P-110	29.7	BUTT	1.13	1.15	1.6
2nd Intermediate	8 3/4	7 5/8	NON API	Yes	2686	10272	2680	10257	P-110	29.7	W-513	1.13	1.15	1.6
Production	6 3/4	5 1/2	NON API	No	0	10072	0	10057	P-110	20	TXP	1.13	1.15	1.6
Production	6 3/4	5	NON API	Yes	10072	18006	10057	10879	P-110	18	W-521	1.13	1.15	1.6

Name	Type	Top MD	Sacks	Yield	Cu. Ft	Weight	Excess	Cement	Additives
Surface	Tail	0	797	1.35	1077	14.8	100%	C	5% NCI + LCM
1st Intermediate	Lead	0	566	2.18	1234	12.7	65%	C	Bentonite + 1% CaCL ₂ + 8% NaCl + LCM
	Tail	2389	232	1.33	309	14.8	65%	C	5% NaCl + LCM
2nd Intermediate	Lead	2686	402	2.22	893	11.5	35%	TXI	Fluid Loss + Dispersant + Retarder + LCM
	Tail	9272	99	1.37	136	13.2	35%	H	Fluid Loss + Dispersant + Retarder + LCM
Production	Tail	9572	993	1.19	1182	15.8	25%	H	Fluid Loss + Dispersant + Retarder + LCM

5. Mud Program

Name	Top	Bottom	Type	Mud Weight	Visc	Fluid Loss
Surface	0	775	FW Spud Mud	8.30	28	NC
Intermediate	775	2986	Brine Water	10.00	30-32	NC
Intermediate 2	2986	10272	FW/Cut Brine	9.00	30-32	NC
Production	10272	18006	Oil Base Mud	11.50	15-20	<10

Electronic Pason mud monitor system complying with Onshore Order 1 will be used. All necessary mud products (e. g., barite, cedar bark) for weight addition and fluid loss control will always be on site. Mud program is subject to change due to hole conditions. A closed loop system will be used.

6. Cores, Tests, & Logs

- Electric Logging Program: No open-hole logs are planned at this time for the pilot hole.
- GR will be collected while drilling through the MWD tools from 9.625" casing shoe to TD.
- A 2-person mud logging program will be used from 9.625" casing shoe to TD.
- No DSTs or cores are planned at this time.
- CBL w/ CCL from as far as gravity will let it fall to TOC.



Drilling Operations Plan
WTG Fed Com 233H
Tap Rock Operating, LLC
SHL 376' FNL & 1984' FEL, Sec. 27
BHL 30' FSL & 2010' FEL, Sec. 34
T. 26S., R. 29E, Eddy County, NM

7. Down Hole Conditions

No abnormal pressure or temperature is expected. Maximum expected bottom hole pressure is $\approx 6,536$ psi. Expected bottom hole temperature is $\approx 170^{\circ}$ F.

Tap Rock does not anticipate that there will be enough H₂S from the surface to the Wolfcamp formations to meet the BLM's Onshore Order 6 requirements for the submission of an "H₂S Drilling Operation Plan" or "Public Protection Plan" for drilling and completing this well. Tap Rock has an H₂S safety package on all wells and an "H₂S Drilling Operations Plan" is attached. Adequate flare lines will be installed off the mud/gas separator where gas may be safely flared. All personnel will be familiar with all aspects of safe operation of equipment being used.

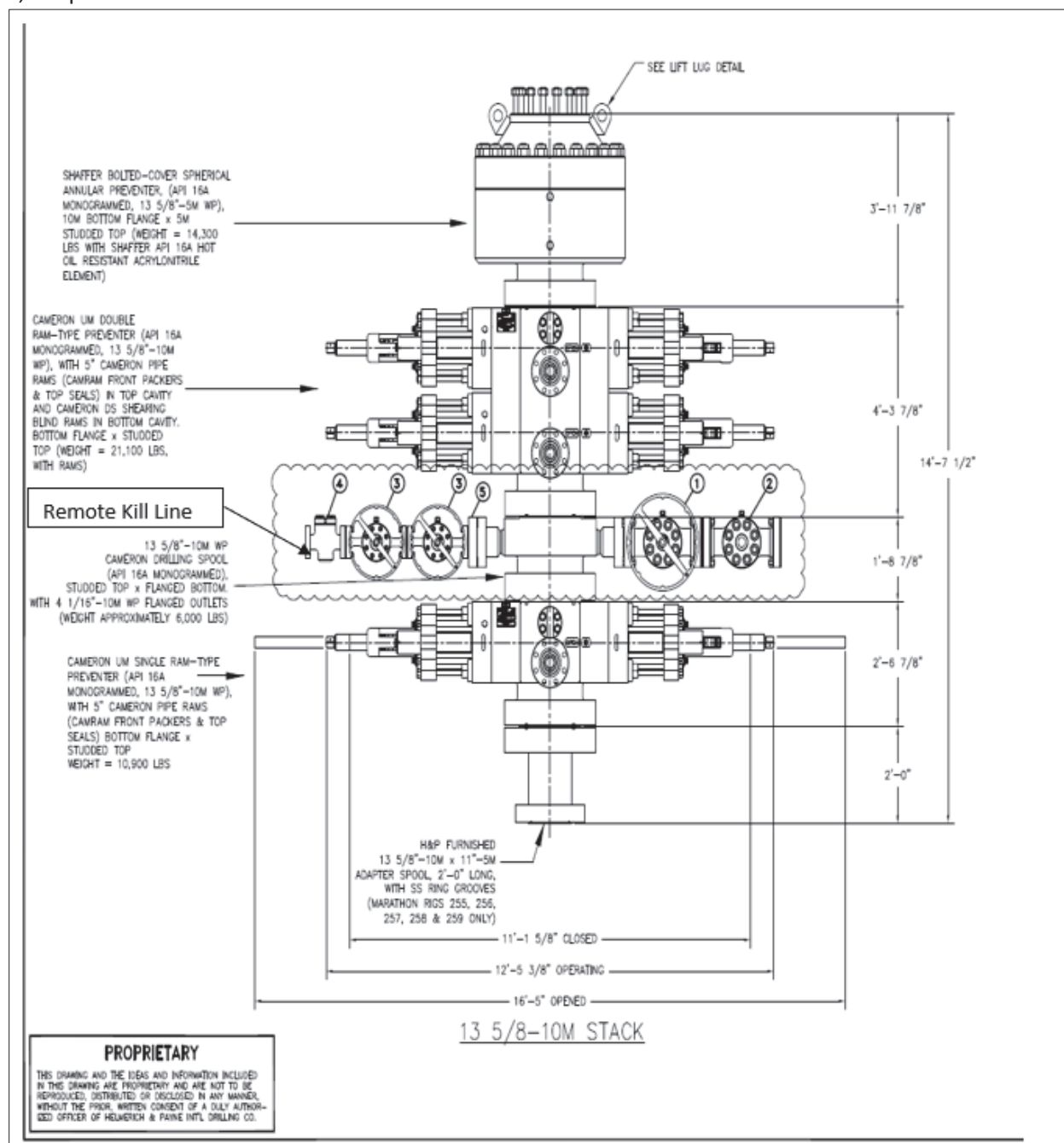
8. Other

Road and location construction will begin after BLM approval of APD. Anticipated spud date as soon as approved. Drilling expected to take 30 days. If production casing is run an additional 60 days will be required to complete and construct surface facilities.



Drilling Operations Plan
 WTG Fed Com 233H
 Tap Rock Operating, LLC
 SHL 376' FNL & 1984' FEL, Sec. 27
 BHL 30' FSL & 2010' FEL, Sec. 34
 T. 26S., R. 29E, Eddy County, NM

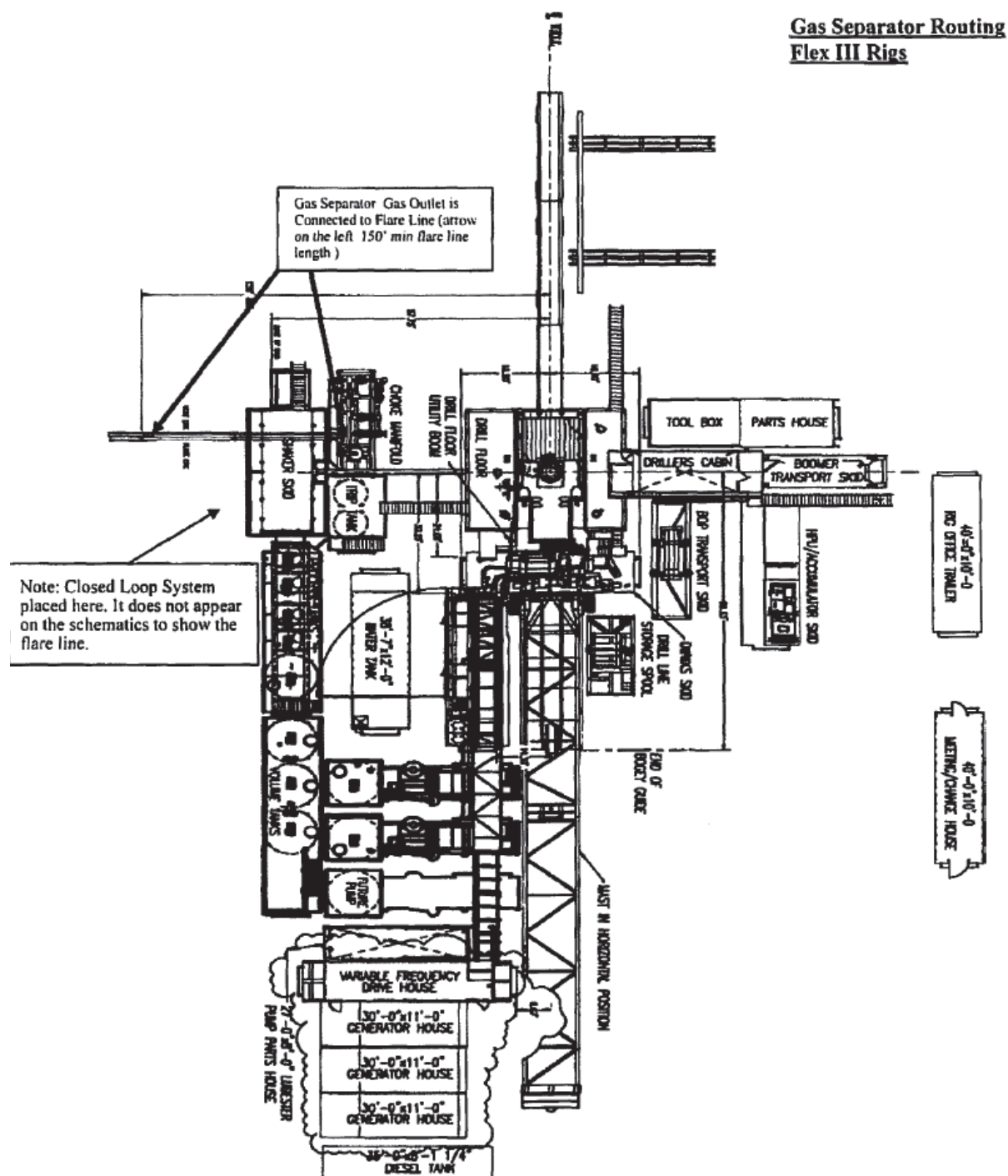
5,000 psi BOP Stack





Tap Rock Operating, LLC

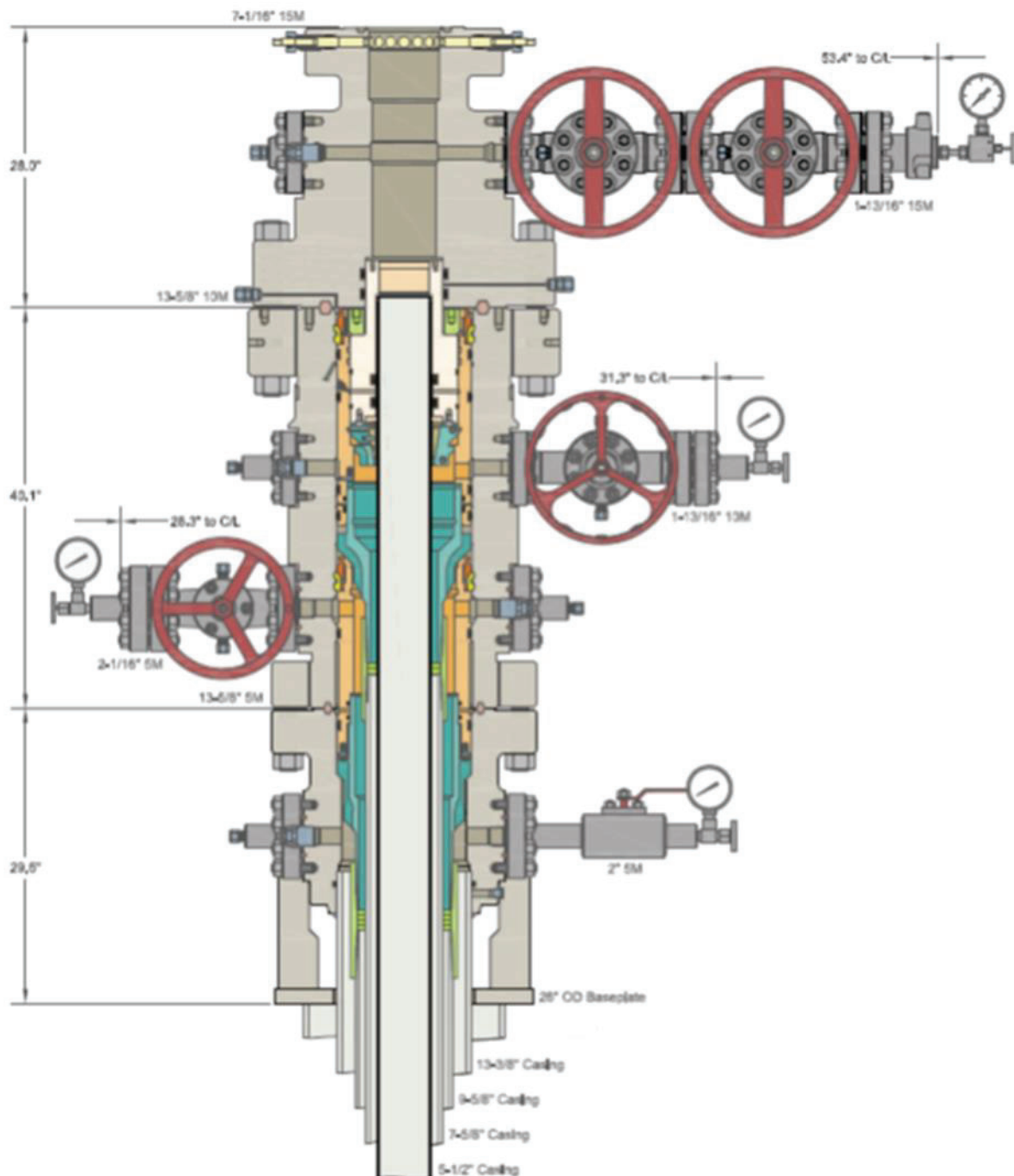
T. 26S., R. 29E, Eddy County, NM





Drilling Operations Plan
 WTG Fed Com 233H
 Tap Rock Operating, LLC
 SHL 376' FNL & 1984' FEL, Sec. 27
 BHL 30' FSL & 2010' FEL, Sec. 34
 T. 26S., R. 29E, Eddy County, NM

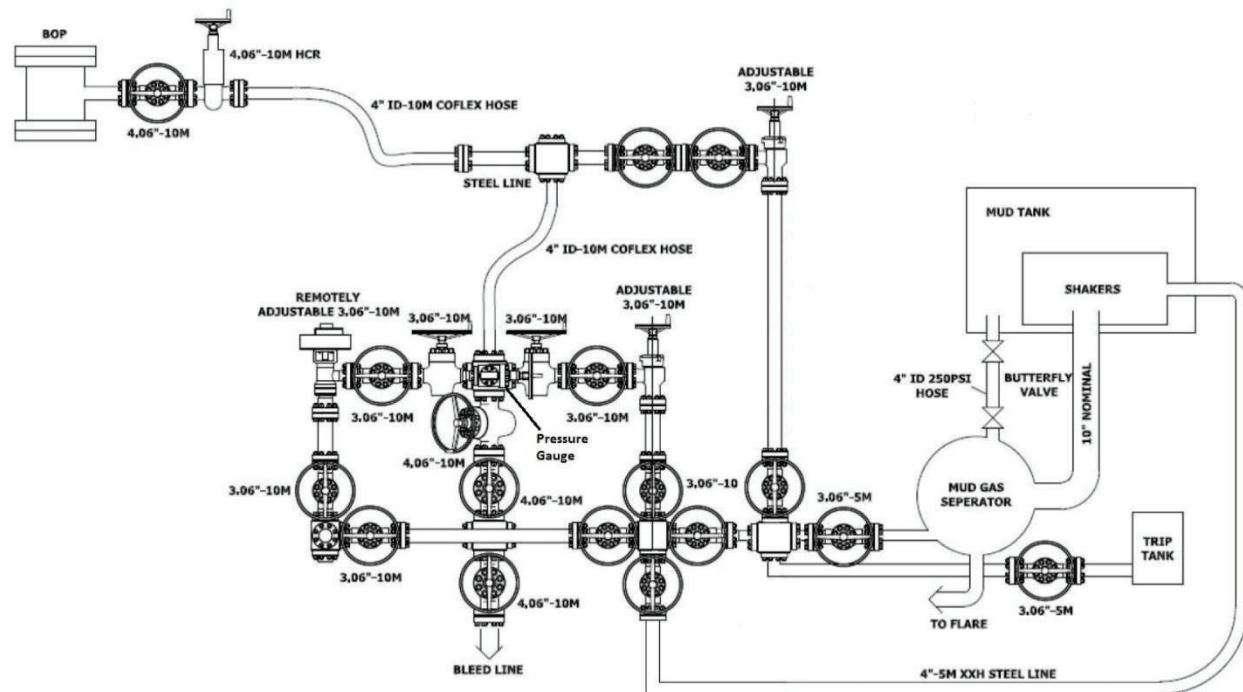
Multi-bowl Wellhead





Drilling Operations Plan
WTG Fed Com 233H
Tap Rock Operating, LLC
SHL 376' FNL & 1984' FEL, Sec. 27
BHL 30' FSL & 2010' FEL, Sec. 34
T. 26S., R. 29E, Eddy County, NM

10M Choke Layout



Tap Rock Operating, LLC.

Eddy County, NM (NAD83)

WTG Fed Com

233H

OH

Plan: Plan #1

Standard Planning Report

31 March, 2020

Project	Eddy County, NM (NAD83)		
Map System:	US State Plane 1983	System Datum:	Mean Sea Level
Geo Datum:	North American Datum 1983		
Map Zone:	New Mexico Eastern Zone		

Site	WTG Fed Com		
Site Position:		Northing:	370,913.55 usft
From:	Lat/Long	Easting:	653,952.90 usft
Position Uncertainty:	2.0 usft	Slot Radius:	13-3/16 "
		Latitude:	32° 1' 9.123 N
		Longitude:	103° 58' 11.889 W
		Grid Convergence:	0.19 °

Well	233H		
Well Position	+N/-S	21.9 usft	Northing:
	+E/-W	130.6 usft	Easting:
Position Uncertainty	2.0 usft		Wellhead Elevation:
			Latitude:
			Longitude:
			Ground Level:

Wellbore	OH		
Magnetics	Model Name	Sample Date	Declination
			(°)
	IGRF2015	3/30/2020	6.82
			Dip Angle
			(°)
			Field Strength
			(nT)
			47,493.21001493

Design	Plan #1		
Audit Notes:			
Version:	Phase:	PLAN	Tie On Depth:
			0.0
Vertical Section:	Depth From (TVD)	+N/-S	+E/-W
	(usft)	(usft)	(usft)
	0.0	0.0	0.0
			Direction
			(°)
			180.03

Plan Survey Tool Program	Date	3/31/2020		
Depth From	Depth To	Survey (Wellbore)	Tool Name	Remarks
(usft)	(usft)			
1	0.0	18,006.6 Plan #1 (OH)	MWD	
			MWD - Standard	

Plan Sections										
Measured	Inclination	Azimuth	Vertical	+N/-S	+E/-W	Dogleg	Build	Turn	TFO	Target
Depth	(°)	(°)	Depth	(usft)	(usft)	Rate	Rate	Rate	(°)	
(usft)			(usft)			(°/100usft)	(°/100usft)	(°/100usft)		
0.0	0.00	0.00	0.0	0.0	0.0	0.00	0.00	0.00	0.00	
1,000.0	0.00	0.00	1,000.0	0.0	0.0	0.00	0.00	0.00	0.00	
1,333.3	5.00	358.50	1,332.9	14.5	-0.4	1.50	1.50	0.00	358.50	
5,133.3	5.00	358.50	5,118.5	345.6	-9.1	0.00	0.00	0.00	0.00	
5,466.7	0.00	0.00	5,451.4	360.1	-9.4	1.50	-1.50	0.00	180.00	
10,372.4	0.00	0.00	10,357.1	360.1	-9.4	0.00	0.00	0.00	0.00	
11,276.7	90.43	182.63	10,930.0	-216.5	-35.9	10.00	10.00	-19.61	182.63	
15,976.8	90.43	182.63	10,894.8	-4,911.5	-251.3	0.00	0.00	0.00	0.00	27/34 Sect Cross_233
16,111.2	90.43	179.94	10,893.8	-5,045.9	-254.4	2.00	0.00	-2.00	-89.92	
17,936.6	90.43	179.94	10,880.0	-6,871.2	-252.4	0.00	0.00	0.00	0.00	LTP_WTG.233H
18,006.6	90.43	179.94	10,879.5	-6,941.2	-252.4	0.00	0.00	0.00	0.00	PBHL_WTG.233H

Planned Survey										
Measured Depth (usft)	Inclination (°)	Azimuth (°)	Vertical Depth (usft)	+N/-S (usft)	+E/-W (usft)	Vertical Section (usft)	Dogleg Rate (°/100usft)	Build Rate (°/100usft)	Turn Rate (°/100usft)	
0.0	0.00	0.00	0.0	0.0	0.0	0.0	0.00	0.00	0.00	
100.0	0.00	0.00	100.0	0.0	0.0	0.0	0.00	0.00	0.00	
200.0	0.00	0.00	200.0	0.0	0.0	0.0	0.00	0.00	0.00	
300.0	0.00	0.00	300.0	0.0	0.0	0.0	0.00	0.00	0.00	
400.0	0.00	0.00	400.0	0.0	0.0	0.0	0.00	0.00	0.00	
500.0	0.00	0.00	500.0	0.0	0.0	0.0	0.00	0.00	0.00	
600.0	0.00	0.00	600.0	0.0	0.0	0.0	0.00	0.00	0.00	
700.0	0.00	0.00	700.0	0.0	0.0	0.0	0.00	0.00	0.00	
705.0	0.00	0.00	705.0	0.0	0.0	0.0	0.00	0.00	0.00	
Rustler Anhydrite										
800.0	0.00	0.00	800.0	0.0	0.0	0.0	0.00	0.00	0.00	
900.0	0.00	0.00	900.0	0.0	0.0	0.0	0.00	0.00	0.00	
1,000.0	0.00	0.00	1,000.0	0.0	0.0	0.0	0.00	0.00	0.00	
Start Build 1.50										
1,100.0	1.50	358.50	1,100.0	1.3	0.0	-1.3	1.50	1.50	0.00	
1,200.0	3.00	358.50	1,199.9	5.2	-0.1	-5.2	1.50	1.50	0.00	
1,205.1	3.08	358.50	1,205.0	5.5	-0.1	-5.5	1.50	1.50	0.00	
Top Salt										
1,300.0	4.50	358.50	1,299.7	11.8	-0.3	-11.8	1.50	1.50	0.00	
1,333.3	5.00	358.50	1,332.9	14.5	-0.4	-14.5	1.50	1.50	0.00	
Start 3800.0 hold at 1333.3 MD										
1,400.0	5.00	358.50	1,399.3	20.3	-0.5	-20.3	0.00	0.00	0.00	
1,500.0	5.00	358.50	1,498.9	29.1	-0.8	-29.1	0.00	0.00	0.00	
1,600.0	5.00	358.50	1,598.6	37.8	-1.0	-37.8	0.00	0.00	0.00	
1,700.0	5.00	358.50	1,698.2	46.5	-1.2	-46.5	0.00	0.00	0.00	
1,800.0	5.00	358.50	1,797.8	55.2	-1.4	-55.2	0.00	0.00	0.00	
1,900.0	5.00	358.50	1,897.4	63.9	-1.7	-63.9	0.00	0.00	0.00	
2,000.0	5.00	358.50	1,997.0	72.6	-1.9	-72.6	0.00	0.00	0.00	
2,100.0	5.00	358.50	2,096.7	81.3	-2.1	-81.3	0.00	0.00	0.00	
2,200.0	5.00	358.50	2,196.3	90.0	-2.4	-90.0	0.00	0.00	0.00	
2,300.0	5.00	358.50	2,295.9	98.8	-2.6	-98.8	0.00	0.00	0.00	
2,400.0	5.00	358.50	2,395.5	107.5	-2.8	-107.5	0.00	0.00	0.00	
2,500.0	5.00	358.50	2,495.1	116.2	-3.0	-116.2	0.00	0.00	0.00	
2,600.0	5.00	358.50	2,594.8	124.9	-3.3	-124.9	0.00	0.00	0.00	
2,700.0	5.00	358.50	2,694.4	133.6	-3.5	-133.6	0.00	0.00	0.00	
2,755.8	5.00	358.50	2,750.0	138.5	-3.6	-138.5	0.00	0.00	0.00	
Base Salt										
2,800.0	5.00	358.50	2,794.0	142.3	-3.7	-142.3	0.00	0.00	0.00	
2,900.0	5.00	358.50	2,893.6	151.0	-4.0	-151.0	0.00	0.00	0.00	
2,936.5	5.00	358.50	2,930.0	154.2	-4.0	-154.2	0.00	0.00	0.00	
Lamar										
2,961.6	5.00	358.50	2,955.0	156.4	-4.1	-156.4	0.00	0.00	0.00	
Delaware Mountain Gp										
3,000.0	5.00	358.50	2,993.2	159.7	-4.2	-159.7	0.00	0.00	0.00	
3,001.8	5.00	358.50	2,995.0	159.9	-4.2	-159.9	0.00	0.00	0.00	
Bell Canyon										
3,016.8	5.00	358.50	3,010.0	161.2	-4.2	-161.2	0.00	0.00	0.00	
Ramsey Sand										
3,100.0	5.00	358.50	3,092.9	168.5	-4.4	-168.5	0.00	0.00	0.00	
3,200.0	5.00	358.50	3,192.5	177.2	-4.6	-177.2	0.00	0.00	0.00	
3,300.0	5.00	358.50	3,292.1	185.9	-4.9	-185.9	0.00	0.00	0.00	
3,400.0	5.00	358.50	3,391.7	194.6	-5.1	-194.6	0.00	0.00	0.00	
3,500.0	5.00	358.50	3,491.3	203.3	-5.3	-203.3	0.00	0.00	0.00	
3,600.0	5.00	358.50	3,591.0	212.0	-5.6	-212.0	0.00	0.00	0.00	
3,700.0	5.00	358.50	3,690.6	220.7	-5.8	-220.7	0.00	0.00	0.00	
3,800.0	5.00	358.50	3,790.2	229.4	-6.0	-229.4	0.00	0.00	0.00	
3,900.0	5.00	358.50	3,889.8	238.2	-6.2	-238.1	0.00	0.00	0.00	
3,905.2	5.00	358.50	3,895.0	238.6	-6.2	-238.6	0.00	0.00	0.00	
Cherry Canyon										
4,000.0	5.00	358.50	3,989.4	246.9	-6.5	-246.9	0.00	0.00	0.00	
4,100.0	5.00	358.50	4,089.0	255.6	-6.7	-255.6	0.00	0.00	0.00	
4,200.0	5.00	358.50	4,188.7	264.3	-6.9	-264.3	0.00	0.00	0.00	
4,300.0	5.00	358.50	4,288.3	273.0	-7.1	-273.0	0.00	0.00	0.00	
4,400.0	5.00	358.50	4,387.9	281.7	-7.4	-281.7	0.00	0.00	0.00	
4,500.0	5.00	358.50	4,487.5	290.4	-7.6	-290.4	0.00	0.00	0.00	

Planned Survey										
Measured Depth (usft)	Inclination (°)	Azimuth (°)	Vertical Depth (usft)	+N/-S (usft)	+E/-W (usft)	Vertical Section (usft)	Dogleg Rate (°/100usft)	Build Rate (°/100usft)	Turn Rate (°/100usft)	
4,600.0	5.00	358.50	4,587.1	299.1	-7.8	-299.1	0.00	0.00	0.00	
4,700.0	5.00	358.50	4,686.8	307.9	-8.1	-307.8	0.00	0.00	0.00	
4,800.0	5.00	358.50	4,786.4	316.6	-8.3	-316.6	0.00	0.00	0.00	
4,900.0	5.00	358.50	4,886.0	325.3	-8.5	-325.3	0.00	0.00	0.00	
5,000.0	5.00	358.50	4,985.6	334.0	-8.7	-334.0	0.00	0.00	0.00	
5,100.0	5.00	358.50	5,085.2	342.7	-9.0	-342.7	0.00	0.00	0.00	
5,119.8	5.00	358.50	5,105.0	344.4	-9.0	-344.4	0.00	0.00	0.00	
Brushy Canyon										
5,133.3	5.00	358.50	5,118.5	345.6	-9.1	-345.6	0.00	0.00	0.00	
Start Drop -1.50										
5,200.0	4.00	358.50	5,184.9	350.8	-9.2	-350.8	1.50	-1.50	0.00	
5,300.0	2.50	358.50	5,284.7	356.5	-9.3	-356.5	1.50	-1.50	0.00	
5,400.0	1.00	358.50	5,384.7	359.6	-9.4	-359.6	1.50	-1.50	0.00	
5,466.7	0.00	0.00	5,451.4	360.1	-9.4	-360.1	1.50	-1.50	0.00	
Start 4905.7 hold at 5466.7 MD										
5,500.0	0.00	0.00	5,484.7	360.1	-9.4	-360.1	0.00	0.00	0.00	
5,600.0	0.00	0.00	5,584.7	360.1	-9.4	-360.1	0.00	0.00	0.00	
5,700.0	0.00	0.00	5,684.7	360.1	-9.4	-360.1	0.00	0.00	0.00	
5,800.0	0.00	0.00	5,784.7	360.1	-9.4	-360.1	0.00	0.00	0.00	
5,900.0	0.00	0.00	5,884.7	360.1	-9.4	-360.1	0.00	0.00	0.00	
6,000.0	0.00	0.00	5,984.7	360.1	-9.4	-360.1	0.00	0.00	0.00	
6,100.0	0.00	0.00	6,084.7	360.1	-9.4	-360.1	0.00	0.00	0.00	
6,200.0	0.00	0.00	6,184.7	360.1	-9.4	-360.1	0.00	0.00	0.00	
6,300.0	0.00	0.00	6,284.7	360.1	-9.4	-360.1	0.00	0.00	0.00	
6,400.0	0.00	0.00	6,384.7	360.1	-9.4	-360.1	0.00	0.00	0.00	
6,500.0	0.00	0.00	6,484.7	360.1	-9.4	-360.1	0.00	0.00	0.00	
6,600.0	0.00	0.00	6,584.7	360.1	-9.4	-360.1	0.00	0.00	0.00	
6,700.0	0.00	0.00	6,684.7	360.1	-9.4	-360.1	0.00	0.00	0.00	
6,730.3	0.00	0.00	6,715.0	360.1	-9.4	-360.1	0.00	0.00	0.00	
Bone Spring Lime										
6,800.0	0.00	0.00	6,784.7	360.1	-9.4	-360.1	0.00	0.00	0.00	
6,825.3	0.00	0.00	6,810.0	360.1	-9.4	-360.1	0.00	0.00	0.00	
Upper Avalon										
6,900.0	0.00	0.00	6,884.7	360.1	-9.4	-360.1	0.00	0.00	0.00	
7,000.0	0.00	0.00	6,984.7	360.1	-9.4	-360.1	0.00	0.00	0.00	
7,100.0	0.00	0.00	7,084.7	360.1	-9.4	-360.1	0.00	0.00	0.00	
7,200.0	0.00	0.00	7,184.7	360.1	-9.4	-360.1	0.00	0.00	0.00	
7,200.3	0.00	0.00	7,185.0	360.1	-9.4	-360.1	0.00	0.00	0.00	
Middle Avalon										
7,300.0	0.00	0.00	7,284.7	360.1	-9.4	-360.1	0.00	0.00	0.00	
7,400.0	0.00	0.00	7,384.7	360.1	-9.4	-360.1	0.00	0.00	0.00	
7,430.3	0.00	0.00	7,415.0	360.1	-9.4	-360.1	0.00	0.00	0.00	
Lower Avalon										
7,500.0	0.00	0.00	7,484.7	360.1	-9.4	-360.1	0.00	0.00	0.00	
7,600.0	0.00	0.00	7,584.7	360.1	-9.4	-360.1	0.00	0.00	0.00	
7,640.3	0.00	0.00	7,625.0	360.1	-9.4	-360.1	0.00	0.00	0.00	
1st Bone Spring Sand										
7,700.0	0.00	0.00	7,684.7	360.1	-9.4	-360.1	0.00	0.00	0.00	
7,800.0	0.00	0.00	7,784.7	360.1	-9.4	-360.1	0.00	0.00	0.00	
7,900.0	0.00	0.00	7,884.7	360.1	-9.4	-360.1	0.00	0.00	0.00	
7,910.3	0.00	0.00	7,895.0	360.1	-9.4	-360.1	0.00	0.00	0.00	
2nd Bone Spring Carb										
8,000.0	0.00	0.00	7,984.7	360.1	-9.4	-360.1	0.00	0.00	0.00	
8,100.0	0.00	0.00	8,084.7	360.1	-9.4	-360.1	0.00	0.00	0.00	
8,200.0	0.00	0.00	8,184.7	360.1	-9.4	-360.1	0.00	0.00	0.00	
8,300.0	0.00	0.00	8,284.7	360.1	-9.4	-360.1	0.00	0.00	0.00	
8,335.3	0.00	0.00	8,320.0	360.1	-9.4	-360.1	0.00	0.00	0.00	
2nd Bone Spring Sand										
8,400.0	0.00	0.00	8,384.7	360.1	-9.4	-360.1	0.00	0.00	0.00	
8,500.0	0.00	0.00	8,484.7	360.1	-9.4	-360.1	0.00	0.00	0.00	
8,600.0	0.00	0.00	8,584.7	360.1	-9.4	-360.1	0.00	0.00	0.00	
8,700.0	0.00	0.00	8,684.7	360.1	-9.4	-360.1	0.00	0.00	0.00	
8,800.0	0.00	0.00	8,784.7	360.1	-9.4	-360.1	0.00	0.00	0.00	
8,890.3	0.00	0.00	8,875.0	360.1	-9.4	-360.1	0.00	0.00	0.00	
3rd Bone Spring Carb										
8,900.0	0.00	0.00	8,884.7	360.1	-9.4	-360.1	0.00	0.00	0.00	

Planned Survey									
Measured Depth (usft)	Inclination (°)	Azimuth (°)	Vertical Depth (usft)	+N/-S (usft)	+E/-W (usft)	Vertical Section (usft)	Dogleg Rate (°/100usft)	Build Rate (°/100usft)	Turn Rate (°/100usft)
9,000.0	0.00	0.00	8,984.7	360.1	-9.4	-360.1	0.00	0.00	0.00
9,100.0	0.00	0.00	9,084.7	360.1	-9.4	-360.1	0.00	0.00	0.00
9,200.0	0.00	0.00	9,184.7	360.1	-9.4	-360.1	0.00	0.00	0.00
9,300.0	0.00	0.00	9,284.7	360.1	-9.4	-360.1	0.00	0.00	0.00
9,400.0	0.00	0.00	9,384.7	360.1	-9.4	-360.1	0.00	0.00	0.00
9,490.3	0.00	0.00	9,475.0	360.1	-9.4	-360.1	0.00	0.00	0.00
3rd Bone Spring Sand									
9,500.0	0.00	0.00	9,484.7	360.1	-9.4	-360.1	0.00	0.00	0.00
9,600.0	0.00	0.00	9,584.7	360.1	-9.4	-360.1	0.00	0.00	0.00
9,700.0	0.00	0.00	9,684.7	360.1	-9.4	-360.1	0.00	0.00	0.00
9,745.3	0.00	0.00	9,730.0	360.1	-9.4	-360.1	0.00	0.00	0.00
3rd BS W Sand									
9,800.0	0.00	0.00	9,784.7	360.1	-9.4	-360.1	0.00	0.00	0.00
9,840.3	0.00	0.00	9,825.0	360.1	-9.4	-360.1	0.00	0.00	0.00
Wolfcamp A X Sand									
9,900.0	0.00	0.00	9,884.7	360.1	-9.4	-360.1	0.00	0.00	0.00
9,935.3	0.00	0.00	9,920.0	360.1	-9.4	-360.1	0.00	0.00	0.00
Wolfcamp A Y Sand									
10,000.0	0.00	0.00	9,984.7	360.1	-9.4	-360.1	0.00	0.00	0.00
10,040.3	0.00	0.00	10,025.0	360.1	-9.4	-360.1	0.00	0.00	0.00
Wolfcamp A Lower									
10,100.0	0.00	0.00	10,084.7	360.1	-9.4	-360.1	0.00	0.00	0.00
10,200.0	0.00	0.00	10,184.7	360.1	-9.4	-360.1	0.00	0.00	0.00
10,250.3	0.00	0.00	10,235.0	360.1	-9.4	-360.1	0.00	0.00	0.00
Wolfcamp B									
10,300.0	0.00	0.00	10,284.7	360.1	-9.4	-360.1	0.00	0.00	0.00
10,372.4	0.00	0.00	10,357.1	360.1	-9.4	-360.1	0.00	0.00	0.00
Start DLS 10.00 TFO 182.63									
10,400.0	2.76	182.63	10,384.7	359.5	-9.5	-359.5	10.00	10.00	0.00
10,450.0	7.76	182.63	10,434.5	354.9	-9.7	-354.9	10.00	10.00	0.00
10,500.0	12.76	182.63	10,483.6	346.0	-10.1	-346.0	10.00	10.00	0.00
10,550.0	17.76	182.63	10,531.9	332.9	-10.7	-332.9	10.00	10.00	0.00
10,585.2	21.28	182.63	10,565.0	321.1	-11.2	-321.1	10.00	10.00	0.00
Wolfcamp B1									
10,600.0	22.76	182.63	10,578.8	315.6	-11.5	-315.6	10.00	10.00	0.00
10,650.0	27.76	182.63	10,624.0	294.3	-12.5	-294.3	10.00	10.00	0.00
10,700.0	32.76	182.63	10,667.1	269.1	-13.6	-269.1	10.00	10.00	0.00
10,750.0	37.76	182.63	10,707.9	240.3	-14.9	-240.3	10.00	10.00	0.00
10,800.0	42.76	182.63	10,746.1	208.0	-16.4	-208.0	10.00	10.00	0.00
10,850.0	47.76	182.63	10,781.3	172.5	-18.0	-172.5	10.00	10.00	0.00
10,900.0	52.76	182.63	10,813.2	134.2	-19.8	-134.1	10.00	10.00	0.00
10,950.0	57.76	182.63	10,841.7	93.1	-21.7	-93.1	10.00	10.00	0.00
10,975.8	60.34	182.63	10,855.0	71.0	-22.7	-71.0	10.00	10.00	0.00
Wolfcamp C									
11,000.0	62.76	182.63	10,866.5	49.8	-23.7	-49.8	10.00	10.00	0.00
11,028.5	65.61	182.63	10,878.9	24.1	-24.9	-24.1	10.00	10.00	0.00
FTP_WTG.233H									
11,050.0	67.76	182.63	10,887.4	4.4	-25.8	-4.4	10.00	10.00	0.00
11,100.0	72.76	182.63	10,904.3	-42.6	-27.9	42.6	10.00	10.00	0.00
11,150.0	77.76	182.63	10,917.0	-90.9	-30.1	90.9	10.00	10.00	0.00
11,200.0	82.76	182.63	10,925.5	-140.1	-32.4	140.1	10.00	10.00	0.00
11,250.0	87.76	182.63	10,929.6	-189.8	-34.7	189.9	10.00	10.00	0.00
11,276.7	90.43	182.63	10,930.0	-216.5	-35.9	216.5	10.00	10.00	0.00
EOC 11276.7 MD, 10930 TVD									
11,300.0	90.43	182.63	10,929.9	-239.8	-37.0	239.8	0.00	0.00	0.00
11,400.0	90.43	182.63	10,929.1	-339.7	-41.5	339.7	0.00	0.00	0.00
11,500.0	90.43	182.63	10,928.4	-439.6	-46.1	439.6	0.00	0.00	0.00
11,600.0	90.43	182.63	10,927.6	-539.5	-50.7	539.5	0.00	0.00	0.00
11,700.0	90.43	182.63	10,926.9	-639.3	-55.3	639.4	0.00	0.00	0.00
11,800.0	90.43	182.63	10,926.1	-739.2	-59.9	739.3	0.00	0.00	0.00
11,900.0	90.43	182.63	10,925.4	-839.1	-64.5	839.2	0.00	0.00	0.00
12,000.0	90.43	182.63	10,924.6	-939.0	-69.0	939.1	0.00	0.00	0.00
12,100.0	90.43	182.63	10,923.9	-1,038.9	-73.6	1,039.0	0.00	0.00	0.00
12,200.0	90.43	182.63	10,923.1	-1,138.8	-78.2	1,138.9	0.00	0.00	0.00
12,300.0	90.43	182.63	10,922.4	-1,238.7	-82.8	1,238.7	0.00	0.00	0.00

Planned Survey										
Measured Depth (usft)	Inclination (°)	Azimuth (°)	Vertical Depth (usft)	+N/-S (usft)	+E/-W (usft)	Vertical Section (usft)	Dogleg Rate (°/100usft)	Build Rate (°/100usft)	Turn Rate (°/100usft)	
12,400.0	90.43	182.63	10,921.6	-1,338.6	-87.4	1,338.6	0.00	0.00	0.00	
12,500.0	90.43	182.63	10,920.9	-1,438.5	-92.0	1,438.5	0.00	0.00	0.00	
12,600.0	90.43	182.63	10,920.1	-1,538.4	-96.6	1,538.4	0.00	0.00	0.00	
12,700.0	90.43	182.63	10,919.4	-1,638.3	-101.1	1,638.3	0.00	0.00	0.00	
12,800.0	90.43	182.63	10,918.6	-1,738.2	-105.7	1,738.2	0.00	0.00	0.00	
12,900.0	90.43	182.63	10,917.9	-1,838.1	-110.3	1,838.1	0.00	0.00	0.00	
13,000.0	90.43	182.63	10,917.1	-1,937.9	-114.9	1,938.0	0.00	0.00	0.00	
13,100.0	90.43	182.63	10,916.4	-2,037.8	-119.5	2,037.9	0.00	0.00	0.00	
13,200.0	90.43	182.63	10,915.6	-2,137.7	-124.1	2,137.8	0.00	0.00	0.00	
13,300.0	90.43	182.63	10,914.9	-2,237.6	-128.6	2,237.7	0.00	0.00	0.00	
13,400.0	90.43	182.63	10,914.1	-2,337.5	-133.2	2,337.6	0.00	0.00	0.00	
13,500.0	90.43	182.63	10,913.4	-2,437.4	-137.8	2,437.5	0.00	0.00	0.00	
13,600.0	90.43	182.63	10,912.6	-2,537.3	-142.4	2,537.4	0.00	0.00	0.00	
13,700.0	90.43	182.63	10,911.9	-2,637.2	-147.0	2,637.3	0.00	0.00	0.00	
13,800.0	90.43	182.63	10,911.1	-2,737.1	-151.6	2,737.2	0.00	0.00	0.00	
13,900.0	90.43	182.63	10,910.4	-2,837.0	-156.1	2,837.1	0.00	0.00	0.00	
14,000.0	90.43	182.63	10,909.6	-2,936.9	-160.7	2,937.0	0.00	0.00	0.00	
14,100.0	90.43	182.63	10,908.9	-3,036.8	-165.3	3,036.8	0.00	0.00	0.00	
14,200.0	90.43	182.63	10,908.1	-3,136.7	-169.9	3,136.7	0.00	0.00	0.00	
14,300.0	90.43	182.63	10,907.4	-3,236.5	-174.5	3,236.6	0.00	0.00	0.00	
14,400.0	90.43	182.63	10,906.6	-3,336.4	-179.1	3,336.5	0.00	0.00	0.00	
14,500.0	90.43	182.63	10,905.9	-3,436.3	-183.7	3,436.4	0.00	0.00	0.00	
14,600.0	90.43	182.63	10,905.1	-3,536.2	-188.2	3,536.3	0.00	0.00	0.00	
14,700.0	90.43	182.63	10,904.4	-3,636.1	-192.8	3,636.2	0.00	0.00	0.00	
14,800.0	90.43	182.63	10,903.6	-3,736.0	-197.4	3,736.1	0.00	0.00	0.00	
14,900.0	90.43	182.63	10,902.9	-3,835.9	-202.0	3,836.0	0.00	0.00	0.00	
15,000.0	90.43	182.63	10,902.1	-3,935.8	-206.6	3,935.9	0.00	0.00	0.00	
15,100.0	90.43	182.63	10,901.4	-4,035.7	-211.2	4,035.8	0.00	0.00	0.00	
15,200.0	90.43	182.63	10,900.6	-4,135.6	-215.7	4,135.7	0.00	0.00	0.00	
15,300.0	90.43	182.63	10,899.9	-4,235.5	-220.3	4,235.6	0.00	0.00	0.00	
15,400.0	90.43	182.63	10,899.1	-4,335.4	-224.9	4,335.5	0.00	0.00	0.00	
15,500.0	90.43	182.63	10,898.4	-4,435.2	-229.5	4,435.4	0.00	0.00	0.00	
15,600.0	90.43	182.63	10,897.6	-4,535.1	-234.1	4,535.3	0.00	0.00	0.00	
15,700.0	90.43	182.63	10,896.9	-4,635.0	-238.7	4,635.2	0.00	0.00	0.00	
15,800.0	90.43	182.63	10,896.1	-4,734.9	-243.2	4,735.1	0.00	0.00	0.00	
15,900.0	90.43	182.63	10,895.4	-4,834.8	-247.8	4,834.9	0.00	0.00	0.00	
15,976.8	90.43	182.63	10,894.8	-4,911.5	-251.3	4,911.7	0.00	0.00	0.00	
Start DLS 2.00 TFO -89.92 - 27/34 Sect Cross_233H										
16,000.0	90.43	182.16	10,894.6	-4,934.7	-252.3	4,934.8	2.00	0.00	-2.00	
16,100.0	90.43	180.16	10,893.9	-5,034.7	-254.3	5,034.8	2.00	0.00	-2.00	
16,111.2	90.43	179.94	10,893.8	-5,045.9	-254.4	5,046.0	2.00	0.00	-2.00	
Start 1825.4 hold at 16111.2 MD										
16,200.0	90.43	179.94	10,893.1	-5,134.7	-254.3	5,134.8	0.00	0.00	0.00	
16,300.0	90.43	179.94	10,892.4	-5,234.7	-254.2	5,234.8	0.00	0.00	0.00	
16,400.0	90.43	179.94	10,891.6	-5,334.7	-254.1	5,334.8	0.00	0.00	0.00	
16,500.0	90.43	179.94	10,890.9	-5,434.7	-253.9	5,434.8	0.00	0.00	0.00	
16,600.0	90.43	179.94	10,890.1	-5,534.7	-253.8	5,534.8	0.00	0.00	0.00	
16,700.0	90.43	179.94	10,889.3	-5,634.7	-253.7	5,634.8	0.00	0.00	0.00	
16,800.0	90.43	179.94	10,888.6	-5,734.7	-253.6	5,734.8	0.00	0.00	0.00	
16,900.0	90.43	179.94	10,887.8	-5,834.7	-253.5	5,834.8	0.00	0.00	0.00	
17,000.0	90.43	179.94	10,887.1	-5,934.7	-253.4	5,934.8	0.00	0.00	0.00	
17,100.0	90.43	179.94	10,886.3	-6,034.7	-253.3	6,034.8	0.00	0.00	0.00	
17,200.0	90.43	179.94	10,885.6	-6,134.7	-253.2	6,134.8	0.00	0.00	0.00	
17,300.0	90.43	179.94	10,884.8	-6,234.6	-253.1	6,234.8	0.00	0.00	0.00	
17,400.0	90.43	179.94	10,884.1	-6,334.6	-253.0	6,334.8	0.00	0.00	0.00	
17,500.0	90.43	179.94	10,883.3	-6,434.6	-252.9	6,434.8	0.00	0.00	0.00	
17,600.0	90.43	179.94	10,882.5	-6,534.6	-252.8	6,534.8	0.00	0.00	0.00	
17,700.0	90.43	179.94	10,881.8	-6,634.6	-252.7	6,634.8	0.00	0.00	0.00	
17,800.0	90.43	179.94	10,881.0	-6,734.6	-252.6	6,734.8	0.00	0.00	0.00	
17,900.0	90.43	179.94	10,880.3	-6,834.6	-252.5	6,834.8	0.00	0.00	0.00	
17,936.6	90.43	179.94	10,880.0	-6,871.2	-252.4	6,871.3	0.00	0.00	0.00	
Start 70.0 hold at 17936.6 MD - LTP_WTG.233H										
18,006.6	90.43	179.94	10,879.5	-6,941.2	-252.4	6,941.3	0.00	0.00	0.00	
TD at 18006.6 - PBHL_WTG.233H										

Design Targets									
Target Name - hit/miss target - Shape	Dip Angle (°)	Dip Dir. (°)	TVD (usft)	+N/-S (usft)	+E/-W (usft)	Northing (usft)	Easting (usft)	Latitude	Longitude
PBHL_WTG.233H - plan misses target center by 0.1usft at 18006.6usft MD (10879.5 TVD, -6941.2 N, -252.4 E) - Point	0.00	0.00	10,879.5	-6,941.2	-252.5	363,994.30	653,830.99	32° 0' 0.653 N	103° 58' 13.575 W
LTP_WTG.233H - plan hits target center - Point	0.00	0.01	10,880.0	-6,871.2	-252.4	364,064.29	653,831.04	32° 0' 1.346 N	103° 58' 13.572 W
27/34 Sect Cross_233H - plan hits target center - Point	0.00	0.00	10,894.8	-4,911.5	-251.3	366,023.96	653,832.12	32° 0' 20.739 N	103° 58' 13.483 W
FTP_WTG.233H - plan misses target center by 56.2usft at 11028.5usft MD (10878.9 TVD, 24.1 N, -24.9 E) - Point	0.00	0.00	10,930.0	47.6	-23.7	370,983.10	654,059.72	32° 1' 9.808 N	103° 58' 10.646 W

Formations						
Measured Depth (usft)	Vertical Depth (usft)	Name	Lithology	Dip (°)	Dip Direction (°)	
705.0	705.0	Rustler Anhydrite				
1,205.1	1,205.0	Top Salt				
2,755.8	2,750.0	Base Salt				
2,936.5	2,930.0	Lamar				
2,961.6	2,955.0	Delaware Mountain Gp				
3,001.8	2,995.0	Bell Canyon				
3,016.8	3,010.0	Ramsey Sand				
3,905.2	3,895.0	Cherry Canyon				
5,119.8	5,105.0	Brushy Canyon				
6,730.3	6,715.0	Bone Spring Lime				
6,825.3	6,810.0	Upper Avalon				
7,200.3	7,185.0	Middle Avalon				
7,430.3	7,415.0	Lower Avalon				
7,640.3	7,625.0	1st Bone Spring Sand				
7,910.3	7,895.0	2nd Bone Spring Carb				
8,335.3	8,320.0	2nd Bone Spring Sand				
8,890.3	8,875.0	3rd Bone Spring Carb				
9,490.3	9,475.0	3rd Bone Spring Sand				
9,745.3	9,730.0	3rd BS W Sand				
9,840.3	9,825.0	Wolfcamp A X Sand				
9,935.3	9,920.0	Wolfcamp A Y Sand				
10,040.3	10,025.0	Wolfcamp A Lower				
10,250.3	10,235.0	Wolfcamp B				
10,585.2	10,565.0	Wolfcamp B1				
10,975.8	10,855.0	Wolfcamp C				

Plan Annotations					
Measured Depth (usft)	Vertical Depth (usft)	Local Coordinates			
		+N/-S (usft)	+E/-W (usft)	Comment	
1,000.0	1,000.0	0.0	0.0	Start Build 1.50	
1,333.3	1,332.9	14.5	-0.4	Start 3800.0 hold at 1333.3 MD	
5,133.3	5,118.5	345.6	-9.1	Start Drop -1.50	
5,466.7	5,451.4	360.1	-9.4	Start 4905.7 hold at 5466.7 MD	
10,372.4	10,357.1	360.1	-9.4	Start DLS 10.00 TFO 182.63	
11,276.7	10,930.0	-216.5	-35.9	EOC 11276.7 MD, 10930 TVD	
15,976.8	10,894.8	-4,911.5	-251.3	Start DLS 2.00 TFO -89.92	
16,111.2	10,893.8	-5,045.9	-254.4	Start 1825.4 hold at 16111.2 MD	
17,936.6	10,880.0	-6,871.2	-252.4	Start 70.0 hold at 17936.6 MD	
18,006.6	10,879.5	-6,941.2	-252.4	TD at 18006.6	

PECOS DISTRICT DRILLING CONDITIONS OF APPROVAL

OPERATOR'S NAME:	TAP ROCK OPERATING LLC
LEASE NO.:	NMNM
WELL NAME & NO.:	WTG FED COM / 233H
SURFACE HOLE FOOTAGE:	284'/N & 2025'/E
BOTTOM HOLE FOOTAGE:	30'/S & 2486'/E
LOCATION:	Section 27, T.26 S., R.29 E., NMPM
COUNTY:	Eddy County, New Mexico

COA

H2S	<input type="radio"/> Yes	<input checked="" type="radio"/> No	
Potash	<input checked="" type="radio"/> None	<input type="radio"/> Secretary	<input type="radio"/> R-111-P
Cave/Karst Potential	<input type="radio"/> Low	<input type="radio"/> Medium	<input checked="" type="radio"/> High
Cave/Karst Potential	<input type="radio"/> Critical		
Variance	<input type="radio"/> None	<input checked="" type="radio"/> Flex Hose	<input type="radio"/> Other
Wellhead	<input type="radio"/> Conventional	<input checked="" type="radio"/> Multibowl	<input type="radio"/> Both
Other	<input type="checkbox"/> 4 String Area	<input type="checkbox"/> Capitan Reef	<input type="checkbox"/> WIPP
Other	<input type="checkbox"/> Fluid Filled	<input type="checkbox"/> Cement Squeeze	<input type="checkbox"/> Pilot Hole
Special Requirements	<input type="checkbox"/> Water Disposal	<input checked="" type="checkbox"/> COM	<input type="checkbox"/> Unit

A. HYDROGEN SULFIDE

Hydrogen Sulfide (H2S) monitors shall be installed prior to drilling out the surface shoe. If H2S is detected in concentrations greater than 100 ppm, the Hydrogen Sulfide area shall meet Onshore Order 6 requirements, which includes equipment and personnel/public protection items. If Hydrogen Sulfide is encountered, provide measured values and formations to the BLM.

B. CASING

1. The **13-3/8** inch surface casing shall be set at approximately 620 feet (a minimum of 70 feet (Eddy County) into the Rustler Anhydrite and above the salt) and cemented to the surface.
 - a. If cement does not circulate to the surface, the appropriate BLM office shall be notified and a temperature survey utilizing an electronic type temperature survey with surface log readout will be used or a cement bond log shall be run to verify the top of the cement. Temperature survey will be run a minimum of six hours after pumping cement and ideally between 8-10 hours after completing the cement job.
 - b. Wait on cement (WOC) time for a primary cement job will be a minimum of **8**

- hours** or 500 pounds compressive strength, whichever is greater. (This is to include the lead cement)
- c. Wait on cement (WOC) time for a remedial job will be a minimum of 4 hours after bringing cement to surface or 500 pounds compressive strength, whichever is greater.
 - d. If cement falls back, remedial cementing will be done prior to drilling out that string.
2. The minimum required fill of cement behind the **9-5/8** inch intermediate casing is:
- Cement to surface. If cement does not circulate see B.1.a, c-d above.
Wait on cement (WOC) time for a primary cement job is to include the lead cement slurry due to cave/karst or potash.
 - ❖ In High Cave/Karst Areas if cement does not circulate to surface on the first two casing strings, the cement on the 3rd casing string must come to surface.
3. The minimum required fill of cement behind the **7-5/8** inch intermediate casing is:
- Cement to surface. If cement does not circulate see B.1.a, c-d above.
Wait on cement (WOC) time for a primary cement job is to include the lead cement slurry due to cave/karst or potash.
 - ❖ In High Cave/Karst Areas if cement does not circulate to surface on the first two casing strings, the cement on the 3rd casing string must come to surface.
4. The minimum required fill of cement behind the **5-1/2** inch production casing is:
- Cement should tie-back at least **200 feet** into previous casing string. Operator shall provide method of verification.

C. PRESSURE CONTROL

1. Variance approved to use flex line from BOP to choke manifold. Manufacturer's specification to be readily available. No external damage to flex line. Flex line to be installed as straight as possible (no hard bends).
2. Operator has proposed a multi-bowl wellhead assembly. This assembly will only be tested when installed on the surface casing. Minimum working pressure of the blowout preventer (BOP) and related equipment (BOPE) required for drilling below the surface casing shoe shall be **5000 (5M)** psi.
 - a. Wellhead shall be installed by manufacturer's representatives, submit documentation with subsequent sundry.

- b. If the welding is performed by a third party, the manufacturer's representative shall monitor the temperature to verify that it does not exceed the maximum temperature of the seal.
- c. Manufacturer representative shall install the test plug for the initial BOP test.
- d. If the cement does not circulate and one inch operations would have been possible with a standard wellhead, the well head shall be cut off, cementing operations performed and another wellhead installed.
- e. Whenever any seal subject to test pressure is broken, all the tests in OOGO2.III.A.2.i must be followed.

D. SPECIAL REQUIREMENT (S)

Communitization Agreement

- The operator will submit a Communitization Agreement to the Carlsbad Field Office, 620 E Greene St. Carlsbad, New Mexico 88220, at least 90 days before the anticipated date of first production from a well subject to a spacing order issued by the New Mexico Oil Conservation Division. The Communitization Agreement will include the signatures of all working interest owners in all Federal and Indian leases subject to the Communitization Agreement (i.e., operating rights owners and lessees of record), or certification that the operator has obtained the written signatures of all such owners and will make those signatures available to the BLM immediately upon request.
- If the operator does not comply with this condition of approval, the BLM may take enforcement actions that include, but are not limited to, those specified in 43 CFR 3163.1.
- In addition, the well sign shall include the surface and bottom hole lease numbers. When the Communitization Agreement number is known, it shall also be on the sign.

GENERAL REQUIREMENTS

The BLM is to be notified in advance for a representative to witness:

- a. Spudding well (minimum of 24 hours)
- b. Setting and/or Cementing of all casing strings (minimum of 4 hours)
- c. BOPE tests (minimum of 4 hours)

☒ Eddy County

Call the Carlsbad Field Office, 620 East Greene St., Carlsbad, NM 88220,
(575) 361-2822

☒ Lea County

Call the Hobbs Field Station, 414 West Taylor, Hobbs NM 88240, (575)
393-3612

1. Unless the production casing has been run and cemented or the well has been properly plugged, the drilling rig shall not be removed from over the hole without prior approval.
 - a. In the event the operator has proposed to drill multiple wells utilizing a skid/walking rig. Operator shall secure the wellbore on the current well, after installing and testing the wellhead, by installing a blind flange of like pressure rating to the wellhead and a pressure gauge that can be monitored while drilling is performed on the other well(s).
 - b. When the operator proposes to set surface casing with Spudder Rig
 - Notify the BLM when moving in and removing the Spudder Rig.
 - Notify the BLM when moving in the 2nd Rig. Rig to be moved in within 90 days of notification that Spudder Rig has left the location.
 - BOP/BOPE test to be conducted per Onshore Oil and Gas Order No. 2 as soon as 2nd Rig is rigged up on well.
2. Floor controls are required for 3M or Greater systems. These controls will be on the rig floor, unobstructed, readily accessible to the driller and will be operational at all times during drilling and/or completion activities. Rig floor is defined as the area immediately around the rotary table; the area immediately above the substructure on which the draw works are located, this does not include the dog house or stairway area.
3. The record of the drilling rate along with the GR/N well log run from TD to surface (horizontal well – vertical portion of hole) shall be submitted to the BLM office as well as all other logs run on the borehole 30 days from completion. If available, a digital copy of the logs is to be submitted in addition to the paper copies. The Rustler top and top and bottom of Salt are to be recorded on the Completion Report.

A. CASING

1. Changes to the approved APD casing program need prior approval if the items substituted are of lesser grade or different casing size or are Non-API. The Operator can exchange the components of the proposal with that of superior strength (i.e. changing from J-55 to N-80, or from 36# to 40#). Changes to the approved cement program need prior approval if the altered cement plan has less volume or strength or if the changes are substantial (i.e. Multistage tool, ECP, etc.). The initial wellhead installed on the well will remain on the well with spools used as needed.
2. Wait on cement (WOC) for Potash Areas: After cementing but before commencing any tests, the casing string shall stand cemented under pressure until both of the following conditions have been met: 1) cement reaches a minimum compressive strength of 500 psi for all cement blends, 2) until cement has been in place at least 24 hours. WOC time will be recorded in the driller's log. The casing integrity test can be done (prior to the cement setting up) immediately after bumping the plug.

3. Wait on cement (WOC) for Water Basin: After cementing but before commencing any tests, the casing string shall stand cemented under pressure until both of the following conditions have been met: 1) cement reaches a minimum compressive strength of 500 psi at the shoe, 2) until cement has been in place at least 8 hours. WOC time will be recorded in the driller's log. See individual casing strings for details regarding lead cement slurry requirements. The casing integrity test can be done (prior to the cement setting up) immediately after bumping the plug.
4. Provide compressive strengths including hours to reach required 500 pounds compressive strength prior to cementing each casing string. Have well specific cement details onsite prior to pumping the cement for each casing string.
5. No pea gravel permitted for remedial or fall back remedial without prior authorization from the BLM engineer.
6. On that portion of any well approved for a 5M BOPE system or greater, a pressure integrity test of each casing shoe shall be performed. Formation at the shoe shall be tested to a minimum of the mud weight equivalent anticipated to control the formation pressure to the next casing depth or at total depth of the well. This test shall be performed before drilling more than 20 feet of new hole.
7. If hardband drill pipe is rotated inside casing, returns will be monitored for metal. If metal is found in samples, drill pipe will be pulled and rubber protectors which have a larger diameter than the tool joints of the drill pipe will be installed prior to continuing drilling operations.
8. Whenever a casing string is cemented in the R-111-P potash area, the NMOCD requirements shall be followed.

B. PRESSURE CONTROL

1. All blowout preventer (BOP) and related equipment (BOPE) shall comply with well control requirements as described in Onshore Oil and Gas Order No. 2 and API RP 53 Sec. 17.
2. If a variance is approved for a flexible hose to be installed from the BOP to the choke manifold, the following requirements apply: The flex line must meet the requirements of API 16C. Check condition of flexible line from BOP to choke manifold, replace if exterior is damaged or if line fails test. Line to be as straight as possible with no hard bends and is to be anchored according to Manufacturer's requirements. The flexible hose can be exchanged with a hose of equal size and equal or greater pressure rating. Anchor requirements, specification sheet and hydrostatic pressure test certification matching the hose in service, to be onsite for review. These documents shall be posted in the company man's trailer and on the rig floor.

3. 5M or higher system requires an HCR valve, remote kill line and annular to match. The remote kill line is to be installed prior to testing the system and tested to stack pressure.
4. If the operator has proposed a multi-bowl wellhead assembly in the APD. The following requirements must be met:
 - a. Wellhead shall be installed by manufacturer's representatives, submit documentation with subsequent sundry.
 - b. If the welding is performed by a third party, the manufacturer's representative shall monitor the temperature to verify that it does not exceed the maximum temperature of the seal.
 - c. Manufacturer representative shall install the test plug for the initial BOP test.
 - d. Whenever any seal subject to test pressure is broken, all the tests in OOGO2.III.A.2.i must be followed.
 - e. If the cement does not circulate and one inch operations would have been possible with a standard wellhead, the well head shall be cut off, cementing operations performed and another wellhead installed.
5. The appropriate BLM office shall be notified a minimum of 4 hours in advance for a representative to witness the tests.
 - a. In a water basin, for all casing strings utilizing slips, these are to be set as soon as the crew and rig are ready and any fallback cement remediation has been done. The casing cut-off and BOP installation can be initiated four hours after installing the slips, which will be approximately six hours after bumping the plug. For those casing strings not using slips, the minimum wait time before cut-off is eight hours after bumping the plug. BOP/BOPE testing can begin after cut-off or once cement reaches 500 psi compressive strength (including lead when specified), whichever is greater. However, if the float does not hold, cut-off cannot be initiated until cement reaches 500 psi compressive strength (including lead when specified).
 - b. In potash areas, for all casing strings utilizing slips, these are to be set as soon as the crew and rig are ready and any fallback cement remediation has been done. For all casing strings, casing cut-off and BOP installation can be initiated at twelve hours after bumping the plug. However, **no tests** shall commence until the cement has had a minimum of 24 hours setup time, except the casing pressure test can be initiated immediately after bumping the plug (only applies to single stage cement jobs).
 - c. The tests shall be done by an independent service company utilizing a test plug not a cup or J-packer. The operator also has the option of utilizing an independent tester to test without a plug (i.e. against the casing) pursuant to Onshore Order 2 with the pressure not to exceed 70% of the burst rating for

the casing. Any test against the casing must meet the WOC time for water basin (8 hours) or potash (24 hours) or 500 pounds compressive strength, whichever is greater, prior to initiating the test (see casing segment as lead cement may be critical item).

- d. The test shall be run on a 5000 psi chart for a 2-3M BOP/BOP, on a 10000 psi chart for a 5M BOP/BOPE and on a 15000 psi chart for a 10M BOP/BOPE. If a linear chart is used, it shall be a one hour chart. A circular chart shall have a maximum 2 hour clock. If a twelve hour or twenty-four hour chart is used, tester shall make a notation that it is run with a two hour clock.
- e. The results of the test shall be reported to the appropriate BLM office.
- f. All tests are required to be recorded on a calibrated test chart. A copy of the BOP/BOPE test chart and a copy of independent service company test will be submitted to the appropriate BLM office.
- g. The BOP/BOPE test shall include a low pressure test from 250 to 300 psi. The test will be held for a minimum of 10 minutes if test is done with a test plug and 30 minutes without a test plug. This test shall be performed prior to the test at full stack pressure.
- h. BOP/BOPE must be tested by an independent service company within 500 feet of the top of the Wolfcamp formation if the time between the setting of the intermediate casing and reaching this depth exceeds 20 days. This test does not exclude the test prior to drilling out the casing shoe as per Onshore Order No. 2.

C. DRILLING MUD

Mud system monitoring equipment, with derrick floor indicators and visual and audio alarms, shall be operating before drilling into the Wolfcamp formation, and shall be used until production casing is run and cemented.

D. WASTE MATERIAL AND FLUIDS

All waste (i.e. drilling fluids, trash, salts, chemicals, sewage, gray water, etc.) created as a result of drilling operations and completion operations shall be safely contained and disposed of properly at a waste disposal facility. No waste material or fluid shall be disposed of on the well location or surrounding area.

Porto-johns and trash containers will be on-location during fracturing operations or any other crew-intensive operations.



Hydrogen Sulfide Drilling

Operations Plan

Tap Rock Resources

1 H2S safety instructions to the following:

- Characteristics of H2S
- Physical effects and hazards
- Principal and operation of H2S detectors, warning system and briefing areas
- Evacuation procedures, routes and first aid
- Proper use of safety equipment & life support systems
- Essential personnel meeting medical evaluation criteria will receive additional training on the proper use of 30min pressure demand air packs

2 H2S Detection and Alarm Systems:

- H2S sensor/detectors to be located on the drilling rig floor, in the base of the sub structure / cellar area, on the mud pits in the shale shaker area. Additional H2S detectors may be placed as deemed necessary
- An audio alarm system will be installed on the derrick floor and in the doghouse

3 Windsocks and / Wind Streamers:

- Windsocks at mud pit area should be high enough to be visible
- Windsock on the rig floor and / top of doghouse should be high enough to be visible

4 Condition Flags and Signs:

- Warning sign on access road to location
- Flags to be displayed on sign at entrance to location
 - Green Flag – Normal Safe Operation Condition
 - Yellow Flag – Potential Pressure and Danger
 - Red Flag – Danger (H2S present in dangerous concentrations) Only H2S trained personnel admitted on location

5 Well Control Equipment:

- See Drilling Operations Plan Schematics

6 Communication:

- While working under masks chalkboards will be used for communications
- Hand signals will be used where chalk board is inappropriate
- Two way radio will be used to communicate off location in case of emergency help is required. In most cases cellular telephones will be available at most drilling foreman's trailer or living quarters.



7 Drilling Stem Testing:

- No DST cores are planned at this time

8 Drilling contractor supervisor will be required to be familiar with the effects H₂S has on tubulars good and other mechanical equipment

9 If H₂S is encountered, mud system will be altered if necessary to maintain control of formation. A mud gas separator will be brought into service along with H₂S scavengers if necessary

11 Emergency Contacts

Emergency Contacts		
Carlsbad Police Department	575.887.7551	911
Carlsbad Medical Center	575.887.4100	911
Eddy County Fire Service	575.628.5450	911
Eddy County Sherriff	575.887.7551	911
Lea County Fire Service	575.391.2983	911
Lea County Sherriff	575.396.3611	911
Jal Police Department	575.395.2121	911
Jal Fire Department	575.395.2221	911
Tap Rock Resources	720.772.5090	



SECTION 27, TOWNSHIP 26-S, RANGE 29-E, N.M.P.M.
EDDY COUNTY, NEW MEXICO

DETAIL VIEW
SCALE: 1" = 100'

SECTION LINE

flare line (straight)
& flare >150'
from well head

highest ground
to the northeast

PRIMARY
safety
briefing area
>150' from
well head

SECONDARY safety briefing area
>150' from well head

SECONDARY egress

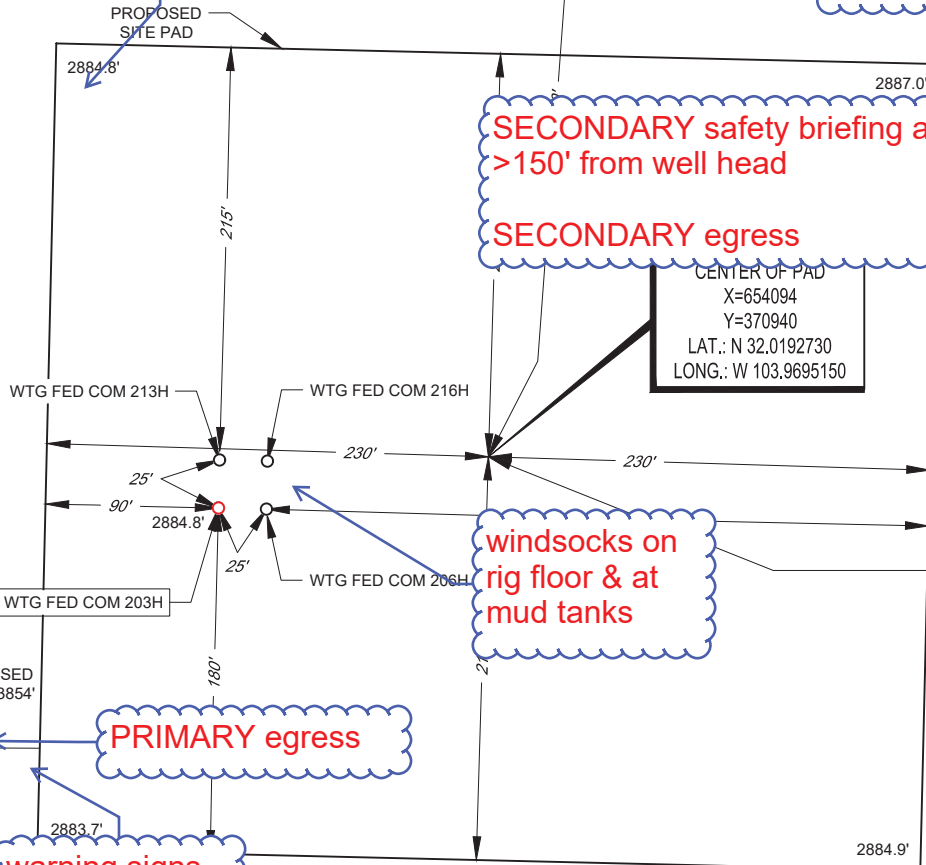
CENTER OF PAD
X=654094
Y=370940
LAT.: N 32.0192730
LONG.: W 103.9695150

windsocks on
rig floor & at
mud tanks

PRIMARY egress

warning signs
& windsock

prevailing wind
blows from
South



NAME & WELL NO.: WTG FED COM 203H
203H LATITUDE N 32.0192009 203H LONGITUDE W 103.9699692

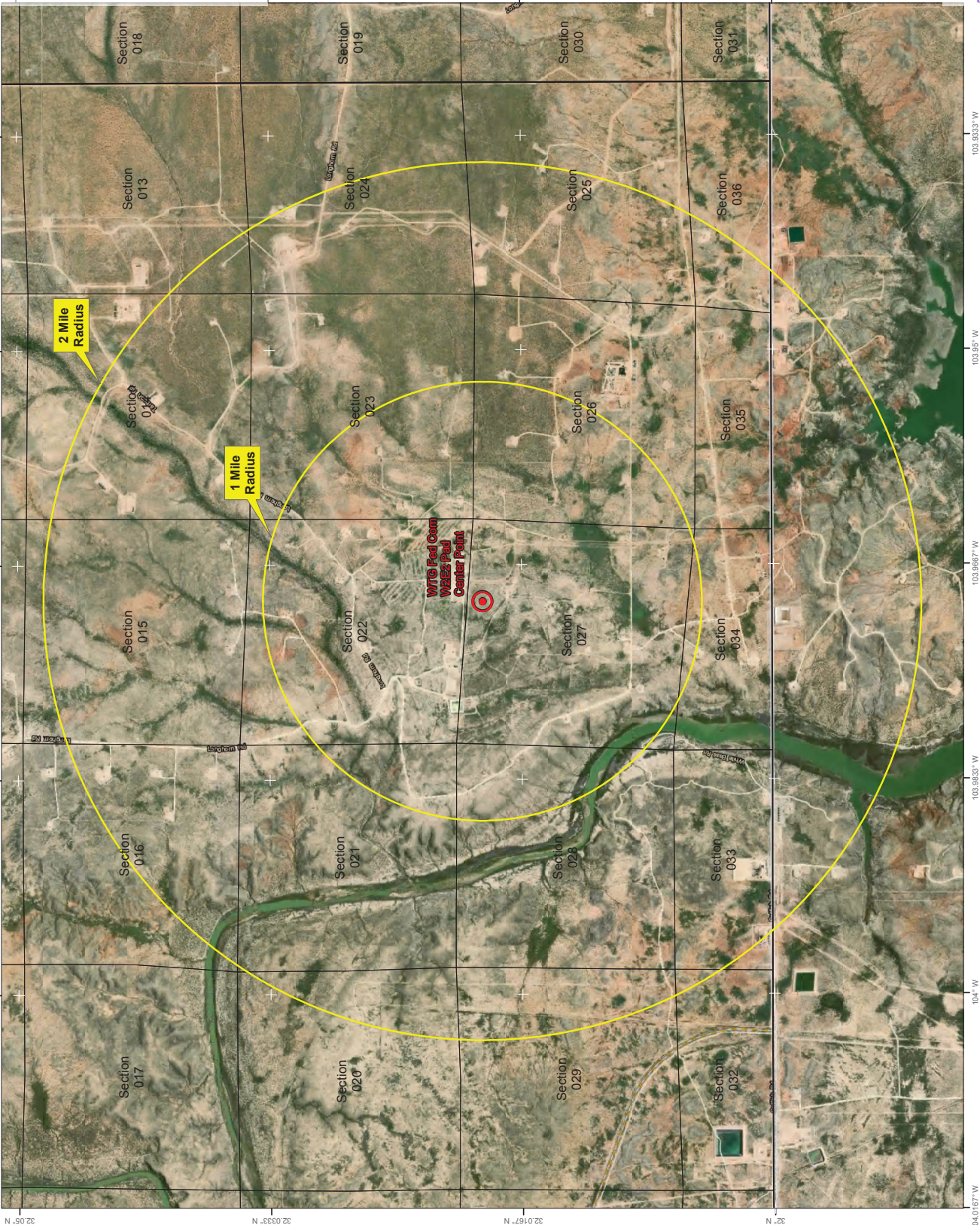
CENTER OF PAD IS 370' FNL & 1974' FEL

ALL BEARINGS, DISTANCES, AND COORDINATE VALUES CONTAINED HEREON ARE GRID
BASED UPON THE NEW MEXICO COORDINATE SYSTEM, EAST ZONE OF THE NORTH
AMERICAN DATUM 1983, U.S. SURVEY FEET

THIS PROPOSED PAD SITE LOCATION SHOWN HEREON HAS BEEN SURVEYED ON THE GROUND UNDER
MY SUPERVISION AND PREPARED ACCORDING TO THE EVIDENCE FOUND AT THE TIME OF SURVEY,
AND DATA PROVIDED BY TAP ROCK OPERATING, LLC. THIS CERTIFICATION IS MADE AND LIMITED TO
THOSE PERSONS OR ENTITIES SHOWN ON THE FACE OF THIS PLAT AND IS NON-TRANSFERABLE. THIS
SURVEY IS CERTIFIED FOR THIS TRANSACTION ONLY.



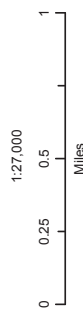
1400 EVERMAN PARKWAY, Ste. 146 • FT. WORTH, TEXAS 76140
TELEPHONE: (817) 744-7512 • FAX (817) 744-7554
2903 NORTH BIG SPRING • MIDLAND, TEXAS 79705
TELEPHONE: (432) 682-1653 OR (800) 767-1653 • FAX (432) 682-1743
WWW.TOPOGRAPHIC.COM



Tap Rock Operating, LLC
WTG Fed Com
W2E2 Pad
H2S Contingency Plan:
Radius Map
Section 27, Township 26S, Range 29E
Eddy County, New Mexico



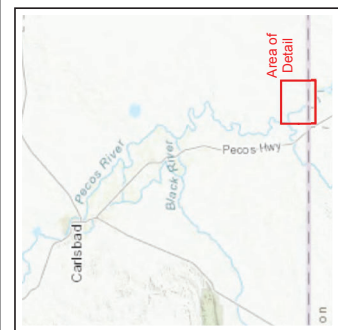
Center of Pad



NAD 1983 New Mexico State Plane East
FIPS 3001 Feet



Prepared by Permits West Inc. October 22, 2018
for Tap Rock Operating, LLC



District I
1625 N. French Dr., Hobbs, NM 88240
Phone:(575) 393-6161 Fax:(575) 393-0720
District II
811 S. First St., Artesia, NM 88210
Phone:(575) 748-1283 Fax:(575) 748-9720
District III
1000 Rio Brazos Rd., Aztec, NM 87410
Phone:(505) 334-6178 Fax:(505) 334-6170
District IV
1220 S. St Francis Dr., Santa Fe, NM 87505
Phone:(505) 476-3470 Fax:(505) 476-3462

State of New Mexico
Energy, Minerals and Natural Resources
Oil Conservation Division
1220 S. St Francis Dr.
Santa Fe, NM 87505

COMMENTS

Action 12370

COMMENTS

Operator: TAP ROCK OPERATING, LLC Suite 200 Golden, CO80401		523 Park Point Drive	OGRID: 372043	Action Number: 12370	Action Type: FORM 3160-3
Created By kpickford	Comment KP GEO Review 12/18/2020			Comment Date 12/18/2020	

District I

1625 N. French Dr., Hobbs, NM 88240
 Phone:(575) 393-6161 Fax:(575) 393-0720

District II

811 S. First St., Artesia, NM 88210
 Phone:(575) 748-1283 Fax:(575) 748-9720

District III

1000 Rio Brazos Rd., Aztec, NM 87410
 Phone:(505) 334-6178 Fax:(505) 334-6170

District IV

1220 S. St Francis Dr., Santa Fe, NM 87505
 Phone:(505) 476-3470 Fax:(505) 476-3462

State of New Mexico
Energy, Minerals and Natural Resources
Oil Conservation Division
1220 S. St Francis Dr.
Santa Fe, NM 87505

CONDITIONS

Action 12370

CONDITIONS OF APPROVAL

Operator:	OGRID:	Action Number:	Action Type:
TAP ROCK OPERATING, LLC Suite 200 Golden, CO80401	372043	12370	FORM 3160-3

OCD Reviewer	Condition
kpickford	Will require a directional survey with the C-104
kpickford	Will require a administrative order for non-standard location prior to placing the well on production
kpickford	Once the well is spud, to prevent ground water contamination through whole or partial conduits from the surface, the operator shall drill without interruption through the fresh water zone or zones and shall immediately set in cement the water protection string
kpickford	Oil base muds are not to be used until fresh water zones are cased and cemented providing isolation from the oil or diesel. This includes synthetic oils. Oil based mud, drilling fluids and solids must be contained in a steel closed loop system