

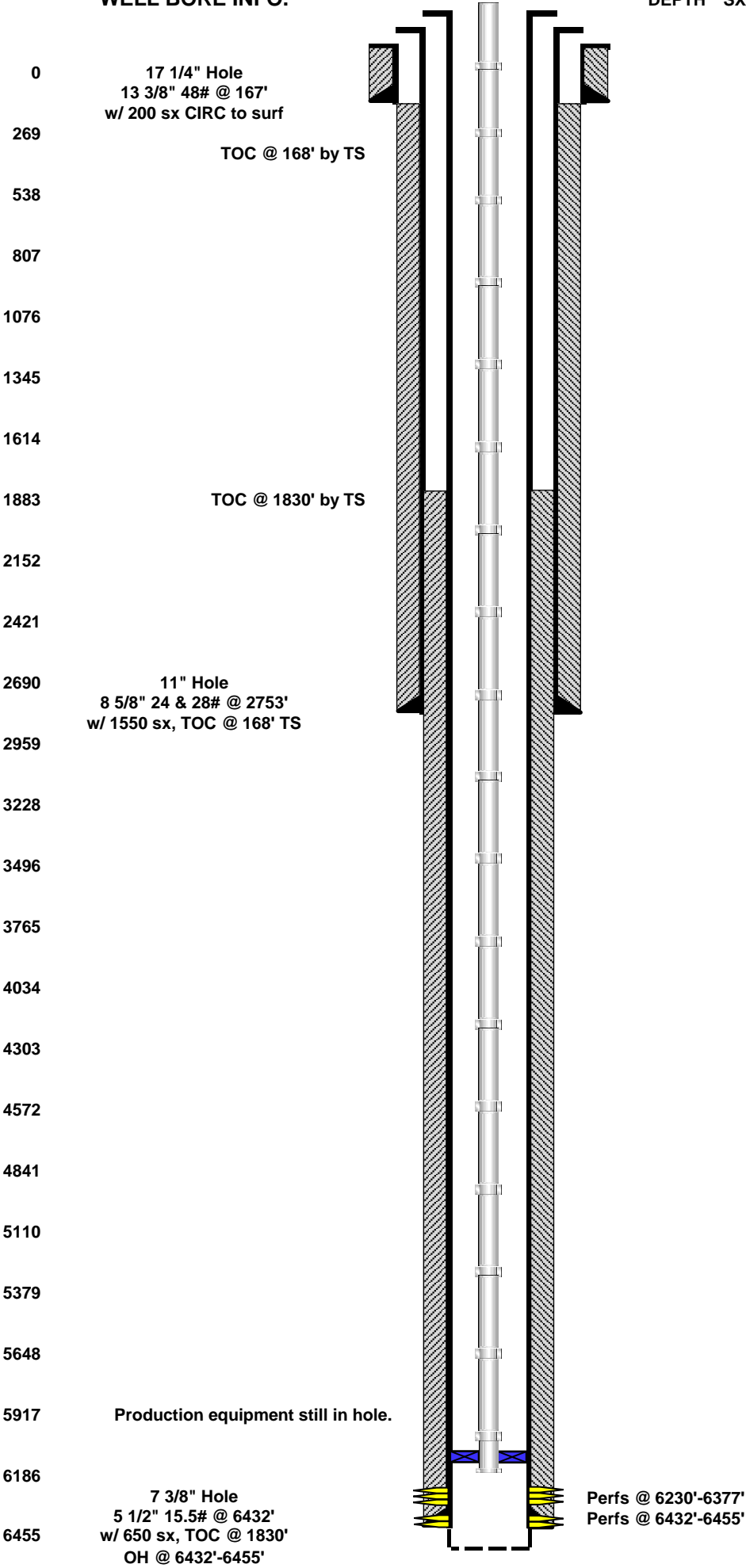




LEASE NAME	Eugene Wood
WELL #	#008
API #	30.025.10393
COUNTY	LEA, NM

WELL BORE INFO.

DEPTH SX/CMT





## WELL BORE INFO.

0	17 1/4" Hole
	13 3/8" 48# @ 167'
	w/ 200 sx CIRC to surf
269	
	TOC @ 168' by TS
538	
807	
1076	
1345	
1614	
1883	TOC @ 1830' by TS
2152	
2421	
2690	11" Hole
	8 5/8" 24 & 28# @ 2753'
	w/ 1550 sx, TOC @ 168' TS
2959	
3228	
3496	
3765	
4034	
4303	
4572	
4841	
5110	
5379	
5648	NOTE: PRIOR TO MIRU P&A RIG, A
	WO RIG WILL MIRU, POOH & LD
	PROD EQUIP, SET CIBP @ 6180'
6186	W/NO CMT TO PREP FOR P&A.
	7 3/8" Hole
	5 1/2" 15.5# @ 6432'
6455	w/ 650 sx, TOC @ 1830'
	OH @ 6432'-6455'

LEASE NAME	Eugene Wood
WELL #	#008
API #	30.025.10393
COUNTY	LEA, NM

DEPTH	SX/CMT	PROPOSED PROCEDURE
SURF 300'	220 SX	PUH & PERF @ 300' & 150', SQZ CLASS "C" CMT, ATTEMPT TO CIRC 8 5/8" & 5 1/2" TO WATER BOARD, SURF SHOE, & SURF PLUG
1080' 1280'	60 SX	PUH & PERF & SQZ CLASS "C" CMT, WOC/TAG TOP OF SALT
1080' 2803'	25 SX	PUH & SPOT CLASS "C" CMT, WOC/TAG INTERM. SHOE & BASE OF SALT
<b>ADD</b> <b>Spot 25 sx 4500-4300</b>		
5910' 6180'	30 SX	MIRU P&A RIG. RIH W/TBG & VERIFY CIBP, CIRC W/MLF, & SPOT CLASS "C" CMT. Drinkard & Tubbs

**ADD**

**Spot 25 sx 4500-4300**

**NOTE: PRIOR TO MIRU P&A RIG, A  
WO RIG WILL MIRU, POOH & LD  
PROD EQUIP, SET CIBP @ 6180'  
W/NO CMT TO PREP FOR P&A.**

**CONDITIONS OF APPROVAL  
FOR PLUGGING AND ABANDONMENT  
OCD - Southern District**

The following is a guide or checklist in preparation of a plugging program, this is not all inclusive and care must be exercised in establishing special plugging programs in unique and unusual cases, Notify NMOCD District Office I (Hobbs) at (575)-263-6633 at least 24 hours before beginning work. After MIRU rig will remain on well until it is plugged to surface. OCD is to be notified before rig down.

**Company representative will be on location during plugging procedures.**

1. A notice of intent to plug and abandon a wellbore is required to be approved before plugging operations are conducted. A cement evaluation tool is required in order to ensure isolation of producing formations, protection of water and correlative rights. A cement bond log or other accepted cement evaluation tool is to be provided to the division for evaluation if one has not been previously run or if the well did not have cement circulated to surface during the original casing cementing job or subsequent cementing jobs. Insure all bradenheads have been exposed, identified and valves are operational prior to rig up.
2. Closed loop system is to be used for entire plugging operation. Upon completion, contents of steel pits are to be hauled to a permitted disposal location.
3. Trucking companies being used to haul oilfield waste fluids to a disposal - commercial or private- shall have an approved NMOCD C-133 permit. A copy of this permit shall be available in each truck used to haul waste products. It is the responsibility of the operator as well as the contractor, to verify that this permit is in place prior to performing work. Drivers shall be able to produce a copy upon request of an NMOCD Field inspector.
4. Filing a subsequent C-103 will serve as notification that the well has been plugged.
5. A final C-103 shall be filed (and a site inspection by NMOCD Inspector to determine if the location is satisfactorily cleaned, all equipment, electric poles and trash has been removed to Meet NMOCD standards) before bonding can be released.
6. If work has not begun within 1 Year of the approval of this procedure, an extension request must be file stating the reason the well has not been plugged.
7. Squeeze pressures are not to exceed 500 psi, unless approval is given by NMOCD.
8. Produced water will not be used during any part of the plugging operation.
9. Mud laden fluids must be placed between all cement plugs mixed at 25 sacks per 100 bbls of water.
10. All cement plugs will be a minimum of 100' in length or a minimum of 25 sacks of cement, whichever is greater. 50' of calculated cement excess required for inside casing plugs and 100% calculated cement excess required on outside casing plugs.
11. Class 'C' cement will be used above 7500 feet.
12. Class 'H' cement will be used below 7500 feet.
13. A cement plug is required to be set 50' above and 50' below, casing stubs, DV tools, attempted casing cut offs, cement tops outside casing, salt sections and anywhere the casing is perforated, these plugs require a 4 hour WOC and then will be tagged
14. All Casing Shoes Will Be Perforated 50' below shoe depth and Attempted to be Squeezed, cement needs to be 50' above and 50' Below Casing Shoe inside the Production Casing.
16. When setting the top out cement plug in production, intermediate and surface casing, wellbores should remain full at least 30 minutes after plugs are set
17. A CIBP is to be set within 100' of production perforations, capped with 100' of cement, WOC 4 hours and tag.
18. A CIBP with 35' of cement may be used in lieu of the 100' plug if set with a bailer. This plug will be placed within 100' of the top perforation, (WOC 4 hrs and tag).

19. No more than 3000' is allowed between cement plugs in cased hole and 2000' in open hole.
20. Some of the Formations to be isolated with cement plugs are: These plugs to be set to isolate formation tops
- A) Fusselman
  - B) Devonian
  - C) Morrow
  - D) Wolfcamp
  - E) Bone Springs
  - F) Delaware
  - G) Any salt sections
  - H) Abo
  - I) Glorieta
  - J) Yates.
  - K) Potash---(In the R-111-P Area (Potash Mine Area),

A solid cement plug must be set across the salt section. Fluid used to mix the cement shall be saturated with the salts that are common to the section penetrated and in suitable proportions, not more than 3% calcium chloride (by weight of cement) will be considered the desired mixture whenever possible, woe 4 hours and tag, this plug will be SO' below the bottom and 50' above the top of the Formation.

21. If cement does not exist behind casing strings at recommended formation depths, the casing can be cut and pulled with plugs set at recommended depths. If casing is not pulled, perforations will be shot and cement squeezed behind casing, woe and tagged. These plugs will be set SO' below formation bottom to 50' above formation top inside the casing.

### **DRY HOLE MARKER REQ.UIRMENTS**

The operator shall mark the exact location of the plugged and abandoned well with a steel marker not less than four inches in diameter, 3' below ground level with a plate of at least 1/4" welded to the top of the casing and the dry hole marker welded on the plate with the following information welded on the dry hole marker:

1. Operator name
2. Lease and Well Number
3. API Number
4. Unit letter
5. Quarter Section (feet from the North, South, East or West)
6. Section, Township and Range
7. Plugging Date
8. County

### **SPECIAL CASES -----AGRICULTURE OR PRARIE CHICKEN BREEDING AREAS**

In these areas, a below ground marker is required with all pertinent information mentioned above on a plate, set 3' below ground level, a picture of the plate will be supplied to NMOCD for record, the exact location of the marker (longitude and latitude by GPS) will be provided to NMOCD (We typically require a current survey to verify the GPS)

### **SITE REMEDIATION DUE WITHIN ONE YEAR OF WELL PLUGGING COMPLETION**

**District I**  
1625 N. French Dr., Hobbs, NM 88240  
Phone:(575) 393-6161 Fax:(575) 393-0720  
**District II**  
811 S. First St., Artesia, NM 88210  
Phone:(575) 748-1283 Fax:(575) 748-9720  
**District III**  
1000 Rio Brazos Rd., Aztec, NM 87410  
Phone:(505) 334-6178 Fax:(505) 334-6170  
**District IV**  
1220 S. St Francis Dr., Santa Fe, NM 87505  
Phone:(505) 476-3470 Fax:(505) 476-3462

**State of New Mexico**  
**Energy, Minerals and Natural Resources**  
**Oil Conservation Division**  
**1220 S. St Francis Dr.**  
**Santa Fe, NM 87505**

CONDITIONS

Action 13126

**CONDITIONS OF APPROVAL**

Operator:		OGRID:		Action Number:		Action Type:	
#1000	APACHE CORPORATION Midland, TX79705	303 Veterans Airpark Ln	873	13126		C-103F	
OCD Reviewer	Condition						
jagarcia	None						