

Submit 1 Copy To Appropriate District Office
 District I – (575) 393-6161
 1625 N. French Dr., Hobbs, NM 88240
 District II – (575) 748-1283
 811 S. First St., Artesia, NM 88210
 District III – (505) 334-6178
 1000 Rio Brazos Rd., Aztec, NM 87410
 District IV – (505) 476-3460
 1220 S. St. Francis Dr., Santa Fe, NM 87505

State of New Mexico
 Energy, Minerals and Natural Resources

Form C-103
 Revised July 18, 2013

OIL CONSERVATION DIVISION
 1220 South St. Francis Dr.
 Santa Fe, NM 87505

SUNDRY NOTICES AND REPORTS ON WELLS (DO NOT USE THIS FORM FOR PROPOSALS TO DRILL OR TO DEEPEN OR PLUG BACK TO A DIFFERENT RESERVOIR. USE "APPLICATION FOR PERMIT" (FORM C-101) FOR SUCH PROPOSALS.) 1. Type of Well: Oil Well <input type="checkbox"/> Gas Well <input checked="" type="checkbox"/> Other <input type="checkbox"/>		WELL API NO. 30-015-22759 5. Indicate Type of Lease STATE <input type="checkbox"/> FEE <input checked="" type="checkbox"/> 6. State Oil & Gas Lease No.
2. Name of Operator PENROC OIL CORPORATION		7. Lease Name or Unit Agreement Name Williams 35 Com
3. Address of Operator 1515 CALLE SUR, SUITE 174, HOBBS, NM 88240		8. Well Number #1
4. Well Location Unit Letter <u>C</u> : <u>660</u> feet from the <u>North</u> line and <u>2310</u> feet from the <u>West</u> line Section <u>35</u> Township <u>23S</u> Range <u>28E</u> NMPM EDDY County		9. OGRID Number 17213
11. Elevation (Show whether DR, RKB, RT, GR, etc.) 3016 GL		10. Pool name or Wildcat Culebra Bluff Strawn

12. Check Appropriate Box to Indicate Nature of Notice, Report or Other Data

NOTICE OF INTENTION TO:

PERFORM REMEDIAL WORK ☐ PLUG AND ABANDON ☒
 TEMPORARILY ABANDON ☐ CHANGE PLANS ☐
 PULL OR ALTER CASING ☐ MULTIPLE COMPL ☐
 DOWNHOLE COMMINGLE ☐
 CLOSED-LOOP SYSTEM ☐
 OTHER: ☐

SUBSEQUENT REPORT OF:

REMEDIAL WORK ☐ ALTERING CASING ☐
 COMMENCE DRILLING OPNS. ☐ P AND A ☐
 CASING/CEMENT JOB ☐
 OTHER: ☐

Notify OCD 24 hrs. prior to any work done

13. Describe proposed or completed operations. (Clearly state all pertinent details, and give pertinent dates, including estimated date of starting any proposed work). SEE RULE 19.15.7.14 NMAC. For Multiple Completions: Attach wellbore diagram of proposed completion or recompletion.

Penroc proposes to PA as follows... No earthpits will be constructed. Well fluids will be circulated to steel pits. Please see attached well data and PA procedure.

SEE CHANGES TO PROCEDURE

Spud Date:

Rig Release Date:

****SEE ATTACHED COA'S****

MUST BE PLUGGED BY 6/5/2021

I hereby certify that the information above is true and complete to the best of my knowledge and belief.

SIGNATURE [Signature] TITLE PRESIDENT DATE 1/5/2021

Type or print name _____ E-mail address: _____ PHONE: _____
For State Use Only

APPROVED BY: [Signature] TITLE Staff Manager DATE 1/8/2021
 Conditions of Approval (if any): _____

Penroc Oil Corporation
Williams 35 Com # 1
API 30-015-22759
Unit Letter "C", Section 35, T23S, R28E
Eddy County, NM

Well Data

Spud 12/14/1978

13 3/8" 54.5# CSA 506'. Cmt w/ 650 sks cmt. Cmt circ. to surface.
9 5/8" 36# CSA 2505'. Cmt w/ 1700 sks cmt. Cmt circ. to surface.
7" 26# CSA 11012'. Cmt w/1450 sks cmt. TOC 3464' calculated w/50%fill.
4 1/2" Liner set 13100' Top of liner at 10799'. Cmt w/310 sks. Cmt circulated to top of liner.
Atoka perfs 11754'-11761'
Packer set 11700' with Blanking plug
Strawn perfs 11446'-11604'

Delaware 2650'
Bone Spring 7045' - 4TH PLUG
Wolfcamp 9952' ✓ 3RD PLUG
Penn 11028' ✓ 2ND PLUG
Strawn 11178' ✓ 2ND PLUG
Atoka 11415' ✓ 1ST PLUG
Morrow 12092'

Class H cmt below 7500'

PA Procedure

~~TAG PACKER WITH BLANKING PLUG~~ - spot 10 sx cl H cmt - WOC & tag
~~Spot 30 sks cement plug x WOC x Tag cmt plug AT 11340' OR ABOVE~~
Displace well with gelled brine water CIBP at 11400' - test csg - spot 25 sx cl H cmt - WOC & tag
Spot 35 sks cmt plug at ~~10049'~~ x WOC x tag cmt plug at ~~10749'~~ or above - 11,062 TO 10,962'
Spot 35 sks cmt plug at 10002' TO COVER PROD SHALE
Spot 35 sks cmt plug at ~~7000'~~ - 7100' TO 7000'
Spot 35 sks cmt plug at ~~4000'~~ 4000'-FILLED PLUG
Perf and squeeze at 2555' with 35 sks cmt
WOC x tag cmt plug at 2455' or above
Perf at 556' x Circulate cement to the surface x Leave 7" casing full of cement
Remove well head and install PA marker

CURRENT
WELLBORE DIAGRAM

Created: 1/5/21 By: BEP
 Updated: By:
 Lease: Williams 35 Com Well No.: 1
 Surface Location: 660' FNL & 2310' FWL Unit Ltr: C
 Bottomhole Location: Eddy St: NM Unit Ltr:
 County: Prodcer St Lease:
 Current Status: Elevation: 3018' GL
 Field: Culebra Bluff (South)
 Sec: 35 TSHP/Range: 23S/28E
 Sec: TSHP/Range:
 API: 30-015-22759

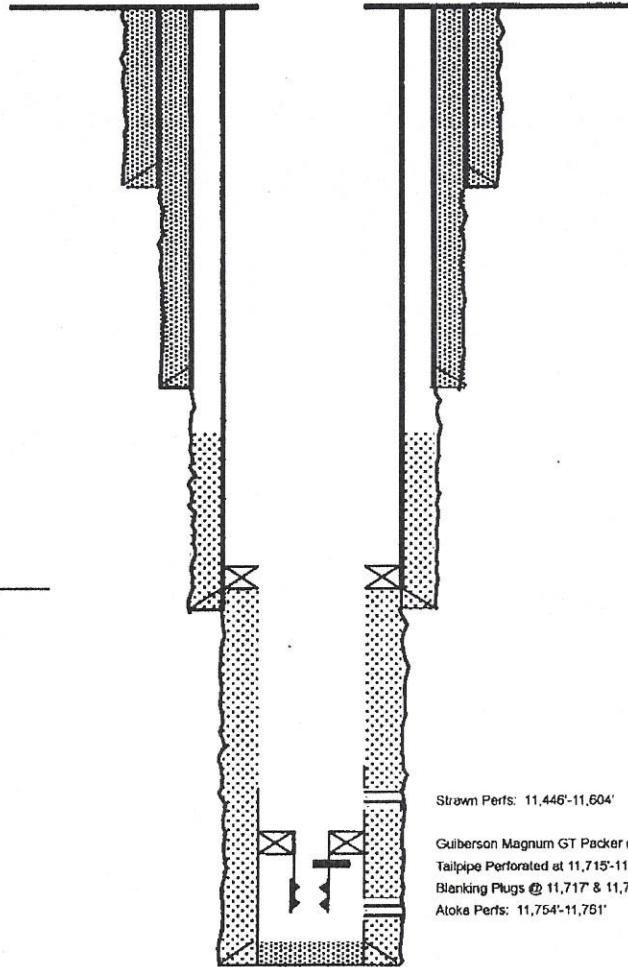
Surface Csg.
 Size: 13 3/8"
 Wt.: 54.5# K-55
 Set @: 506'
 Sxs cmt: 650
 Circ: yes
 TOC: surface, 36 sx
 Hole Size: 17 1/2"

Intermediate Csg.
 Size: 9 5/8"
 Wt.: 36# K-55
 Set @: 2505'
 Sxs Cmt: 1700
 Circ: yes, 360 sx
 TOC: surface
 Hole Size: 12 1/4"

Production Csg.
 Size: 7"
 Wt.: 23# & 26# S-95
 Set @: 11,012'
 Sxs Cmt: 1,450
 TOC: 3464' Calc @ 50% Fillup
 Hole Size: 8 1/2"

Production Liner
 Size: 4-1/2"
 Wt.: 13.5#, N-80
 TOL: 10,799'
 BOL: 13,100'
 Cement: 310 sx

BEP www.pwlc.net



KB: 3033'
 DF:
 GL: 3018'
 Spud Date: 12/14/78
 Compl. Date: 2/23/79

Strawn Perfs: 11,446'-11,604'

Gulberson Magnum GT Packer @ 11,700'

Tailpipe Perforated at 11,715'-11,717'

Blanking Plugs @ 11,717' & 11,728'

Atoka Perfs: 11,754'-11,751'

Williams 35 Com No. 1 WBD before.xls

1/5/21

PA
WELLBORE DIAGRAM

Created: 1/5/21 By: BEP
 Updated: By: _____
 Lease: Williams 35 Com Well No.: 1
 Surface Location: 660' FNL & 2310' FWL Unit Ltr: C
 Bottomhole Location: Eddy St: NM Unit Ltr: _____
 County: _____ St Lease: _____
 Current Status: Prodcer Elevation: 3018' GL
 Field: Culebra Bluff (South)
 Sec: 35 TSHP/Range: 23S/28E
 Sec: TSHP/Range: _____
 API: 30-015-22759

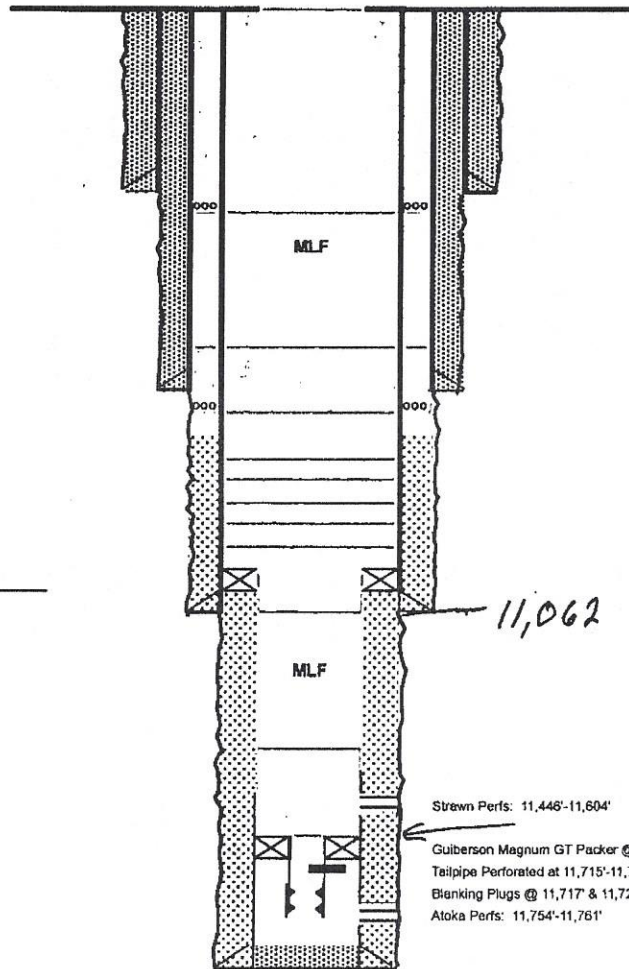
Surface Csg.
 Size: 13 3/8"
 Wt.: 54.5# K-55
 Set @: 506'
 Sxs cmt: 650
 Circ: yes
 TOC: surface, 36 sx
 Hole Size: 17 1/2"

Intermediate Csg.
 Size: 9 5/8"
 Wt.: 36# K-55
 Set @: 2505'
 Sxs Cmt: 1700
 Circ: yes, 360 sx
 TOC: surface
 Hole Size: 12 1/4"

Production Csg.
 Size: 7"
 Wt.: 23# & 26# S-95
 Set @: 11,012'
 Sxs Cmt: 1,450
 TOC: 3464' Calc @ 50% Fillup
 Hole Size: 8 1/2"

Production Liner
 Size: 4-1/2"
 Wt.: 13.5# N-80
 TOL: 10,799'
 BOL: 13,100'
 Cement: 310 sx

BEP www.pwllc.net



KB: 3033'
 DF: _____
 GL: 3018'
 Spud Date: 12/14/78
 Compl. Date: 2/23/79

11,062 woe & TAC

Strenw Perfs: 11,448'-11,604'

woe & TAC

Guliberson Magnum GT Packer @ 11,700'

Tailpipe Perforated at 11,715'-11,717'

Blanking Plugs @ 11,717' & 11,728'

Atoka Perfs: 11,754'-11,761'

1/5/21

CONDITIONS FOR PLUGGING AND ABANDONMENT

OCD - Southern District

The following is a guide or checklist in preparation of a plugging program, this is not all inclusive and care must be exercised in establishing special plugging programs in unique and unusual cases, **Notify NMOCD District Office II at (575)-748-1283 at least 24 hours before beginning work. After MIRU rig will remain on well until it is plugged to surface. OCD is to be notified before rig down. Company representative will be on location during plugging procedures.**

1. A notice of intent to plug and abandon a wellbore is required to be approved before plugging operations are conducted. A cement evaluation tool is required in order to ensure isolation of producing formations, protection of water and correlative rights. A cement bond log or other accepted cement evaluation tool is to be provided to the division for evaluation if one has not been previously run or if the well did not have cement circulated to surface during the original casing cementing job or subsequent cementing jobs. Insure all bradenheads have been exposed, identified and valves are operational prior to rig up.
2. Closed loop system is to be used for entire plugging operation. Upon completion, contents of steel pits are to be hauled to a permitted disposal location.
3. Trucking companies being used to haul oilfield waste fluids to a disposal – commercial or private – shall have an approved NMOCD C-133 permit. A copy of this permit shall be available in each truck used to haul waste products. It is the responsibility of the operator as well as the contractor, to verify that this permit is in place prior to performing work. Drivers shall be able to produce a copy upon request of an NMOCD Field inspector.
4. Filing a subsequent C-103 will serve as notification that the well has been plugged.
5. A final C-103 shall be filed (and a site inspection by NMOCD Inspector to determine if the location is satisfactorily cleaned, all equipment, electric poles and trash has been removed to Meet NMOCD standards) before bonding can be released.
6. If work has not begun within 1 Year of the approval of this procedure, an extension request must be file stating the reason the well has not been plugged.
7. Squeeze pressures are not to exceed 500 psi, unless approval is given by NMOCD.
8. Produced water **will not** be used during any part of the plugging operation.
9. Mud laden fluids must be placed between all cement plugs mixed at 25 sacks per 100 bbls of water.
10. All cement plugs will be a minimum of 100' in length or a minimum of 25 sacks of cement, whichever is greater. 50' of calculated cement excess required for inside casing plugs and 100% calculated cement excess required on outside casing plugs.
11. Class 'C' cement will be used above 7500 feet.
12. Class 'H' cement will be used below 7500 feet.
13. A cement plug is required to be set 50' above and 50' below, casing stubs, DV tools, attempted casing cut offs, cement tops outside casing, salt sections and anywhere the casing is perforated, these plugs require a 4 hour WOC and then will be tagged
14. All Casing Shoes Will Be Perforated 50' below shoe depth and Attempted to be Squeezed, cement needs to be 50' above and 50' Below Casing Shoe inside the Production Casing.

16. When setting the top out cement plug in production, intermediate and surface casing, wellbores should remain full at least 30 minutes after plugs are set
17. A CIBP is to be set within 100' of production perforations, capped with 100' of cement, WOC 4 hours and tag.
18. A CIBP with 35' of cement may be used in lieu of the 100' plug if set with a bailer. This plug will be placed within 100' of the top perforation, (WOC 4 hrs and tag).
19. No more than 3000' is allowed between cement plugs in cased hole and 2000' in open hole.
20. Some of the Formations to be isolated with cement plugs are: These plugs to be set to isolate formation tops
 - A) Fusselman
 - B) Devonian
 - C) Morrow
 - D) Wolfcamp
 - E) Bone Springs
 - F) Delaware
 - G) Any salt sections
 - H) Abo
 - I) Glorieta
 - J) Yates.
 - K) **Potash---** (In the R-111-P Area (Potash Mine Area), a solid cement plug must be set across the salt section. Fluid used to mix the cement shall be saturated with the salts that are common to the section penetrated and in suitable proportions, not more than 3% calcium chloride (by weight of cement) will be considered the desired mixture whenever possible, WOC 4 hours and tag, this plug will be 50' below the bottom and 50' above the top of the Formation.
21. If cement does not exist behind casing strings at recommended formation depths, the casing can be cut and pulled with plugs set at recommended depths. If casing is not pulled, perforations will be shot and cement squeezed behind casing, WOC and tagged. These plugs will be set 50' below formation bottom to 50' above formation top inside the casing

DRY HOLE MARKER REQUIREMENTS

The operator shall mark the exact location of the plugged and abandoned well with a steel marker not less than four inches in diameter, 3' below ground level with a plate of at least ¼" welded to the top of the casing and the dry hole marker welded on the plate with the following information welded on the dry hole marker:

1. Operator name 2. Lease and Well Number 3. API Number 4. Unit Letter 5. Quarter Section (feet from the North, South, East or West) 6. Section, Township and Range 7. Plugging Date 8. County (SPECIAL CASES)-----AGRICULTURE OR PRARIE CHICKEN BREEDING AREAS

In these areas, a below ground marker is required with all pertinent information mentioned above on a plate, set 3' below ground level, a picture of the plate will be supplied to NMOCD for record, the exact location of the marker (longitude and latitude by GPS) will be provided to NMOCD (We typically require a current survey to verify the GPS)

SITE REMEDIATION DUE WITHIN ONE YEAR OF WELL PLUGGING COMPLETION

District I
1625 N. French Dr., Hobbs, NM 88240
Phone:(575) 393-6161 Fax:(575) 393-0720
District II
811 S. First St., Artesia, NM 88210
Phone:(575) 748-1283 Fax:(575) 748-9720
District III
1000 Rio Brazos Rd., Aztec, NM 87410
Phone:(505) 334-6178 Fax:(505) 334-6170
District IV
1220 S. St Francis Dr., Santa Fe, NM 87505
Phone:(505) 476-3470 Fax:(505) 476-3462

State of New Mexico
Energy, Minerals and Natural Resources
Oil Conservation Division
1220 S. St Francis Dr.
Santa Fe, NM 87505

CONDITIONS

Action 13774

CONDITIONS OF APPROVAL

Operator:	PENROC OIL CORP	P.O. Box 2769	Hobbs, NM88241-2769	OGRID:	17213	Action Number:	13774	Action Type:	C-103F
OCD Reviewer	Condition								
gcordero	None								